

**CIHM
Microfiche
Series
(Monographs)**

**ICMH
Collection de
microfiches
(monographies)**



Canadian Institute for Historical Microreproductions / Institut canadien de microreproductions historiques

© 1998

Technical and Bibliographic Notes / Notes techniques et bibliographiques

The Institute has attempted to obtain the best original copy available for filming. Features of this copy which may be bibliographically unique, which may alter any of the images in the reproduction, or which may significantly change the usual method of filming are checked below.

- Coloured covers / Couverture de couleur
- Covers damaged / Couverture endommagée
- Covers restored and/or laminated / Couverture restaurée et/ou pelliculée
- Cover title missing / Le titre de couverture manque
- Coloured maps / Cartes géographiques en couleur
- Coloured ink (i.e. other than blue or black) / Encre de couleur (i.e. autre que bleue ou noire)
- Coloured plates and/or illustrations / Planches et/ou illustrations en couleur
- Bound with other material / Relié avec d'autres documents
- Only edition available / Seule édition disponible
- Tight binding may cause shadows or distortion along interior margin / La reliure serrée peut causer de l'ombre ou de la distorsion le long de la marge intérieure.
- Blank leaves added during restorations may appear within the text. Whenever possible, these have been omitted from filming / Il se peut que certaines pages blanches ajoutées lors d'une restauration apparaissent dans le texte, mais, lorsque cela était possible, ces pages n'ont pas été filmées.
- Additional comments / Commentaires supplémentaires:

L'Institut a microfilmé le meilleur exemplaire qu'il lui a été possible de se procurer. Les détails de cet exemplaire qui sont peut-être uniques du point de vue bibliographique, qui peuvent modifier une image reproduite, ou qui peuvent exiger une modification dans la méthode normale de filmage sont indiqués ci-dessous.

- Coloured pages / Pages de couleur
- Pages damaged / Pages endommagées
- Pages restored and/or laminated / Pages restaurées et/ou pelliculées
- Pages discoloured, stained or foxed / Pages décolorées, tachetées ou piquées
- Pages detached / Pages détachées
- Showthrough / Transparence
- Quality of print varies / Qualité inégale de l'impression
- Includes supplementary material / Comprend du matériel supplémentaire
- Pages wholly or partially obscured by errata slips, tissues, etc., have been refilmed to ensure the best possible image / Les pages totalement ou partiellement obscurcies par un feuillet d'errata, une pelure, etc., ont été filmées à nouveau de façon à obtenir la meilleure image possible.
- Opposing pages with varying colouration or discolorations are filmed twice to ensure the best possible image / Les pages s'opposant ayant des colorations variables ou des décolorations sont filmées deux fois afin d'obtenir la meilleure image possible.

This item is filmed at the reduction ratio checked below /
Ce document est filmé au taux de réduction indiqué ci-dessous.

	10x		14x		18x		22x		26x		30x	
	12x		16x		20x		24x		28x		32x	

The copy filmed here has been reproduced thanks to the generosity of:

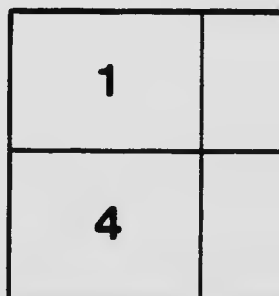
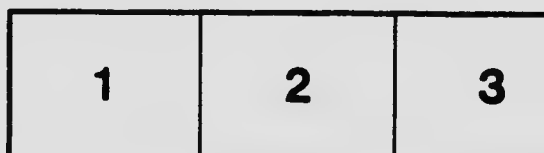
McLennan Library
McGill University
Montreal

The images appearing here are the best quality possible considering the condition and legibility of the original copy and in keeping with the filming contract specifications.

Original copies in printed paper covers are filmed beginning with the front cover end ending on the last page with a printed or illustrated impression, or the back cover when appropriate. All other original copies are filmed beginning on the first page with a printed or illustrated impression, and ending on the last page with a printed or illustrated impression.

The last recorded frame on each microfiche shall contain the symbol \rightarrow (meaning "CONTINUED"), or the symbol ∇ (meaning "END"), whichever applies.

Maps, plates, charts, etc., may be filmed at different reduction ratios. Those too large to be entirely included in one exposure are filmed beginning in the upper left hand corner, left to right and top to bottom, as many frames as required. The following diagrams illustrate the method:



anks

L'exemplaire filmé fut reproduit grâce à la générosité de:

McLennan Library
McGill University
Montreal

ity
ility

Les images suivantes ont été reproduites avec le plus grand soin, compte tenu de la condition et de la netteté de l'exemplaire filmé, et en conformité avec les conditions du contrat de filmage.

lmed
n
pres-
li
the
-
ted

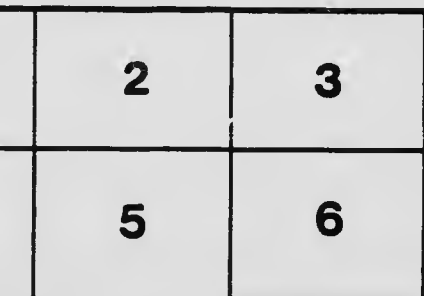
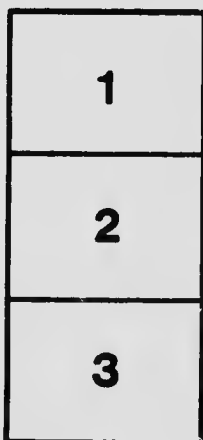
Les exemplaires originaux dont la couverture en papier est imprimée sont filmés en commençant par le premier feuillet et en terminant soit par le dernier feuillet qui comporte une empreinte d'impression ou d'illustration, soit par le second feuillet, selon le cas. Tous les autres exemplaires originaux sont filmés en commençant par le premier feuillet qui comporte une empreinte d'impression ou d'illustration et en terminant par le dernier feuillet qui comporte une telle empreinte.

N-
)

Un des symboles suivants apparaîtra sur la dernière image de chaque microfiche, selon le cas: le symbole \rightarrow signifie "A SUIVRE", le symbole ∇ signifie "FIN".

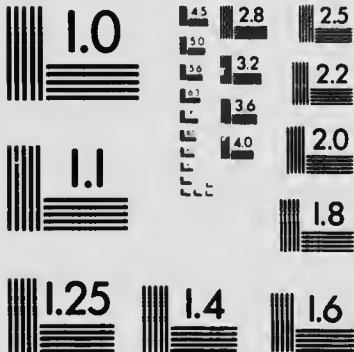
be
to
e

Les cartes, planches, tableaux, etc., peuvent être filmés à des taux de réduction différents. Lorsque le document est trop grand pour être reproduit en un seul cliché, il est filmé à partir de l'angle supérieur gauche, de gauche à droite, et de haut en bas, en prenant le nombre d'images nécessaire. Les diagrammes suivants illustrent la méthode.



MICROCOPY RESOLUTION TEST CHART

(ANSI and ISO TEST CHART No. 2)



APPLIED IMAGE Inc

1653 East Main Street
Rochester, New York 14609 USA
(716) 482 - 0300 - Phone
(716) 288 - 5989 - Fax

McGill University Libraries

IX82M AHMac Cutter

The classification of specimens in the M



3 000 696 696 1

IX82M

AHMac



Pam. not Acc.

THE CLASSIFICATION OF SPECIMENS IN THE MEDICAL MUSEUM OF MCGILL UNIVERSITY.

By MAUDE E. ABBOTT, M. D.

The specimens in this Museum are arranged on a system of Museum classification introduced after a plan suggested by the late Professor Wyatt Johnston, in the year 1899, and followed successfully since. A descriptive number is used, in which the anatomical condition is represented by numbers before, and the pathological condition by numbers following the decimal point. The number of the individual specimen is indicated by a small index figure placed to the right of, and above the descriptive number. Thus 14.24¹ Thrombosis of the heart.

The advantage of this system is that it allows of indefinite expansion, the catalogue number becoming the shelf number, and each descriptive number forming a unit group to which specimens may be added at will without disturbing the logical sequence of the collection as a whole. The Anatomical Classification as given below is practically the same as that proposed by Dr. Haviland Field of Zurich for use in Medical libraries, but the Pathological Classification has been repeatedly amended and revised as practical necessity presented itself, until it assumed its present form. A more detailed explanation will be found in an article by the writer "On the Classification of Museum Specimens" in *American Medicine*, 1903, p. 541.

PART I.

THE ANATOMICAL CLASSIFICATION.

1. CIRCULATORY SYSTEM.

11. Pericardium.
12. Myocardium.
13. Endocardium.
14. Heart as a whole
15. Arteries.
16. Veins.

2. RESPIRATORY SYSTEM.

21. Nares.
22. Larynx.
23. Trachea and Bronchi.
24. Lungs.
25. Pleura.

3. DIGESTIVE SYSTEM.

31. Teeth.
32. Mouth. Tongue. Pharynx.
33. Oesophagus.
34. Stomach.
344. Stomach contents.
35. Intestine.
351. Small intestine.
352. Appendix.
353. Large intestine.
354. Rectum.
36. Peritoneum and Mesentery.
37. Liver.
38. Gall Bladder and Bile Ducts.
39. Pancreas.

4. HAEMOPOIETIC ORGANS and DUCTLESS GLANDS.
 41. Bone marrow.
 42. Lymph nodes.
 421. Haemo-lymph nodes.
 43. Spleen.
 431. Spleen capsule.
 44. Thymus.
 45. Thyroid.
 46. Parathyroids.
 47. Adrenals.
 48. Carotid Coccygeal Glands.
 49. Pituitary Body.
5. UROGENITAL SYSTEM.
 51. Kidney.
 52. Ureter.
 53. Bladder.
 54. Prostate.
 55. Urethra.
 56. Penis.
 57. Seminal Vesicles, Vas Deferens and Cord.
 58. Testis, Epididymis, Tunica Vaginalis.
6. FEMALE GENITALIA.
 61. External genitalia.
 62. Vagina.
 63. Uterus.
 64. Fallopian tube.
 65. Ovary and parovarium.
 66. Pelvic peritoneum and connective tissue.
 67. Breast.
 68. Generative system in pregnancy.
 69. Ovum as a whole.
7. NERVOUS SYSTEM.
 71. Membranes.
 72. Cerebral vascular system.
 73. Cerebrum.
 74. Cerebellum.
 75. Spinal cord.
 76. Nerves.
 77. Nerve ganglia.
 78. Eye.
 79. Ear.
8. MUSCULO-CUTANEOUS SYSTEM.
 81. Skin.
 82. Hair.
 83. Nails.
 84. Muscle.
 85. Fascia.
9. OSSEOUS AND ARTICULAR SYSTEM.
 91. Bones of cranium.
 92. Bones of face.
 93. Vertebrae.
 - Sternum.
 - Ribs.
 96. Bones of upper extremity.
 97. Pelvic girdle.
 98. Bones of lower extremity.
 - 99.
10. REGIONAL.
 01. Head.
 02. Face.
 03. Neck.
 04. Back.
 05. Thorax.
 06. Abdomen.
 07. Pelvis.
 08. Upper extremity.
 09. Lower extremity.
 59. Perineum.

PART II.

AMENDED PATHOLOGICAL CLASSIFICATION.

- .1 ANTENATAL STRUCTURES and ABNORMALITIES OF DEVELOPMENT.
 - .11 Foetal Structures (Normal Anatomy).
 - .12 Malformations of Incomplete Development.
 - .13 Reduction in Size. (Hypoplasia).
 - .14 Reduction in Number. (Syndactylism, etc.)
 - .15 Persistent Foetal Structures.
 - .16 Excess in Size.
 - .17 Excess in Number.
 - .18 Malposition or Heterotaxis; Abberant Structures.
 - .19 Abnormalities due to Foetal Disease.
- .2 CIRCULATORY DISTURBANCES.
 - .21 Anaemia.
 - .22 Congestion or Hyperaemia.
 - .23 Haemorrhage.
 - .24 Thrombosis.

- .25 Embolism.
- .26 Infarction.
- .27 Oedema.
- 3 INFLAMMATORY PROCESSES.
 - .31 Catarrhal or Desquamative.
 - .32 Exudative inflammation.
 - .321 Sero-fibrinous.
 - .322 Fibrinous or plastic.
 - .323 Diphtheritic or membranous.
 - .324 Haemorrhagic.
 - .325 Suppurative or purulent (abscess).
 - .33 Destructive inflammation.
 - .34 Specific Inflammation due to Cocci.
 - .35 Specific Inflammation due to Bacilli.
 - .36 Specific Inflammation due to Acid-fast Bacilli, Spirilla, and Yeasts and Moulds.
 - .37 Specific Inflammation due to Protozoa.
 - .38 Specific Inflammations, Causative Agent still undetermined.
 - .39 Productive or Proliferative Processes.
- 4 INFECTIONS AND PARASITES.

(Note: .41 to .46 of this section are for bacteriological use only, the lesions caused by different microorganisms being found under .34 to .38. Only parts .47 and .48 Vermes, and .49 Insecta and Arachnida are to be used in the classification of pathological or clinical material.)

 - .41 Cocci.
 - .42 Bacilli.
 - .43 Spirilla.
 - .44 Higher Bacteria.
 - .45 Cryptogenic Infections (Organism still undetermined).
 - .46 Protozoa.
 - .47 Flat worms.
 - .48 Round worms.
 - .49 Insecta and Arachnida.
- 5 DISORDERS OF METABOLISM and INTOXICATIONS.
 - .51 Diseases associated with changes in the blood and blood-forming organs.
 - .511 Chlorosis.
 - .512 Splenic anaemia.
 - .513 Splenomegaly.
 - .514 Leukaemia.
 - .515 Hodgkin's Disease.
 - .516 Pernicious anaemia.
 - .517 Haemophilia.
 - .52 Intoxications associated with disorders of Ductless Glands.
 - .521 Exophthalmic goitre.
 - .522 Myxoedema.
 - .523 Cretinism.
 - .524 Acromegaly.
 - .525 Achondroplasia.
 - .526 Status lymphaticus.
 - .527 Tetany.
 - .528 Addison's disease.
 - .53 Diseases due to Autochthonous or Heterochthonous Poisons of Organic Nature.
 - .531 Acute yellow atrophy.
 - .532 Eclampsia.
 - .533 Uraemia.
 - .534 Ptomaine poisoning.
 - .54 Diseases due to Heterochthonous poisons of inorganic or plant nature.
 - .55 Arteriosclerosis.
 - .56 Diseases due to Defects of Nutrition.
 - .57 Diseases of Disordered Metabolism.
 - .58 Organic Nervous Disorders.
 - .59 Functional Nervous Disorders.
- 6 RETROGRESSIVE CHANGES.
 - .61 Atrophy.
 - .62 Degenerations.
 - .621 Acute, toxic, cloudy swelling.
 - .622 Fatty, Atheromatous.
 - .623 Mucoid.
 - .624 Hyaline and fibro-hyaline.
 - .625 Amyloid.
 - .626 Colloid.
 - .627 Calcareous.
 - .628 Hydropic and cystic.
 - .629 Keratinization.
 - .620 Various: Osseous, Gelatinous, Elastoid, Waxy, Fragmentation, Basophilic, etc.
 - .63 Infiltrations.
 - .631
 - .632 Fatty.

- .633 Biliary.
- .634 Iron, haemosiderosis.
- .635 Metallic.
- .636 Other pigments.
- .637 Anthracosis.
- .638 Chalicosis.
- .64 Concretion. Calculus Formation.
- .65 The Necroses.
 - .651 Simple necrosis.
 - .652 Caseation.
 - .653 Gangrene.
 - .654 Ulceration of non-inflammatory origin (gastric ulcer).
 - .655 Perforation or rupture of non-inflammatory origin.
 - .656 Fat necrosis.
 - .657 Focal necrosis.
 - .658 The softenings, encephalomalacia, myomalacia, etc.
- .66 Stenosis due to Disease.
- .67 Dilatation due to Disease.
- 7 PROGRESSIVE CHANGES.
 - .71 Regeneration.
 - .72 Hypertrophy.
 - .73 Benign Tumours. (Of one of the modifications of fully formed connective tissue).
 - .731 Fibroma.
 - .732 Fibromyoma.
 - .733 Lipoma.
 - .734 Chondroma.
 - .735 Myxoma.
 - .736 Osteoma.
 - .737 Odontoma.
 - .738 Glioma.
 - .74 Benign Tumours (of one of the modifications of fully formed connective tissue).
 - .741 Myoma.
 - .742 Neuroma.
 - .743 Myeloma.
 - .75 Benign Tumours (of epithelial origin).
 - .751 Adenoma.
 - .752 Papilloma.
 - .76 Indeterminate Group (Tumours of uncertain histology or malignancy).
 - .761 Angioma.
 - .762 Endothelioma (Psammoma).
 - .763 Perithelioma.
 - .764 Mesothelioma.
- .77 Malignant Tumours. Sarcoma. Tissue-forming varieties.
- .78 Malignant Tumours. Sarcoma.
 - .781 Round celled sarcoma.
 - .782 Spindle celled sarcoma.
 - .783 Mixed celled sarcoma.
 - .784 Giant celled sarcoma.
 - .785 Melanotic sarcoma.
 - .786 Lymphosarcoma.
- .79 Malignant Tumours of Epithelial Origin.
- .70 Cystoma.
- 8 TRAUMATA (from mechanical, chemical or physical causes).
 - .81 Wounds.
 - .811 Incised.
 - .812 Punctured.
 - .813 Contusions.
 - .814 Lacerations.
 - .815 Crushing accidents.
 - .816 Gunshot wounds.
 - .817 Bedsores.
 - .818 Abrasions.
 - .819 Ruptures.
 - .82 Fractures.
 - .83 Dislocations and Sprains.
 - .84 Displacements.
 - .841 Hernia.
 - .842 Intussusception.
 - .843 Volvulus.
 - .844 Prolapse.
 - .85 Impaction of Foreign Bodies.
 - .86 Thermal Injuries.
 - .87 Chemical Lesions.
 - .88 Pressure effects produced by compression or traction from without, or distension from within.
 - .89 Birth Processes.
- 9 OPERATIVE PROCEDURES.
 - .91 Amputations.
 - .92 Excision.
 - .93 Plastic.
 - .94 Ligature.
 - .95 Incision.
 - .96 Union and Replacement.
 - .97 Fixation.
 - .98 Experimental Surgery.
 - .99 Miscellaneous Operations.
- 0 SPECIFIC ARTEFACTS.



