

2

Monographies No 4

The Fact Book of Lachine.

3

The Fact Book of Lachine

FC
2949
L137
F142



Grain Steamer Passing Through Lachine Canal.

1909 This book is being issued and circulated by the city council of Lachine to supply the Canadian and American Manufacturer with accurate and practical information about the city of Lachine.

The actual conditions on the Island of Montreal, warrant the statement that today, any Manufacturer wishing to establish a factory in or about the city of Montreal should come to Lachine,

For the following reasons.

- 1° Lachine possesses all the advantages that Montreal can offer in point of:
 - a — Shipping facilities.
 - b — Banking accomodation.
 - c — Home market for products.
 - d — Home of great industries.
 - e — Cheap electrical power.

2° The price of land in Lachine is from 50 to 100% per cent cheaper than in Montreal.

3° It is the head of Lachine canal, one of the finest artificial waterways of the world.

4° New factories sites, with both water and rail-shipping facilities.

Each of these points we will bear out with facts in the following pages.

UNIQUE SITUATION OF LACHINE

To get a proper idea of the situation of Lachine one must keep in mind that it constitutes one of the most important links of the chain of canals known as the St. Lawrence Canals, which stands today as the finest system of inland navigation known to the world.





General View of ALLIS-CHALMERS BULLOCK'S Limited, WORKS, LACHINE, P.Q.

The system comprises the canals of Lachine, Beauharnois, Cornwall, Pointe-Farran, Flat-Rapid, Galops, Welland and Sault Ste. Marie, extending the navigable portion of the St. Lawrence for 2,384 miles, from the straits of Belle-Isle to Fond-du-Lac at the head of Lake Superior.

Lachine is at the head of Lachine Canal which serves to bridge the Lachine rapids on the St. Lawrence River and which renders Montreal the head of the Ocean Navigation, a seaport 986 miles inland.

Lachine is situated on the Island of Montreal, 9 miles to the west from the city itself, a distance covered in 40 minutes from the Montreal Post Office, by a ten and twenty minutes ten cents trolley car service and by over forty railroad trains daily.

It is practically a part of the city itself.

It has a population of 11,000.

SHIPPING BY WATER FROM LACHINE

For shipments by water, the Manufacturer in Lachine enjoys practically the same advantages as the Manufacturer in Montreal.

The following excerpts from the report of Mr. F. W. Cowie, chief engineer of the Montreal Harbour, will convey an accurate impression, of what the Harbour of Montreal is today:

"The facility of approach, both by ocean vessels, inland vessels and railways to a convenient point of transfer makes Montreal almost unique, there being nothing in the way of close connection for the traffic from all points and almost in the heart of a large and growing city.

During the last few years, the range lights, buoys and other aids to navigation of the St. Lawrence, as placed by the Department of Marine and



NURSERIES OF CHARLES A. SMITH

Fisheries of Canada, have earned for the route the title of being the best lighted and safest river channel in the world.

Montreal is the national seaport for 7 months in the year of the Canadian Provinces of Ontario, Manitoba, Saskatchewan and Alberta and also of a large portion of the northwestern States, extending from Chicago to St. Louis and Denver."

The total number of incoming and outgoing vessels, according to the last report was twenty six thousand four hundred and seventy eight.

SHIPMENTS BY FREIGHT

The same facilities are found in regard to railroad freight.

Lachine is situated on the trunk line of both the Canadian Pacific Railway and the Grand Trunk Railway System.

Over eight other railroad companies with terminuses in Montreal complete the transportation requirements of a great distributing centre.

The same rates apply for Lachine as for Montreal for shipments to or from that city.

CARTAGE

It is now established beyond dispute, that it is cheaper to haul freight from Lachine to Montreal and to distribute it thence from any of twelve railroad terminuses in the city than to cart it between distant points in the city itself.

A large brick and terra-cotta company, holding a monopoly of its trade, has within the last twelve months, removed its works to the immediate vicinity of Lachine, in accordance with the acknowledgement of this fact.



View of the C.P.R. LACHINE BRIDGE showing the work of its double-tracking actually being completed.

BANKING ACCOMODATIONS

The banking system of Canada is admittedly one of the best known.

Montreal is the money market of Canada and boasts of the finest palatial bank building in the world.

The Manufacturer in Lachine finds himself in the very heart of Canadian finance with its vast resources and its unparalleled record of stability, and soundness.

HOME MARKET FOR PRODUCTS

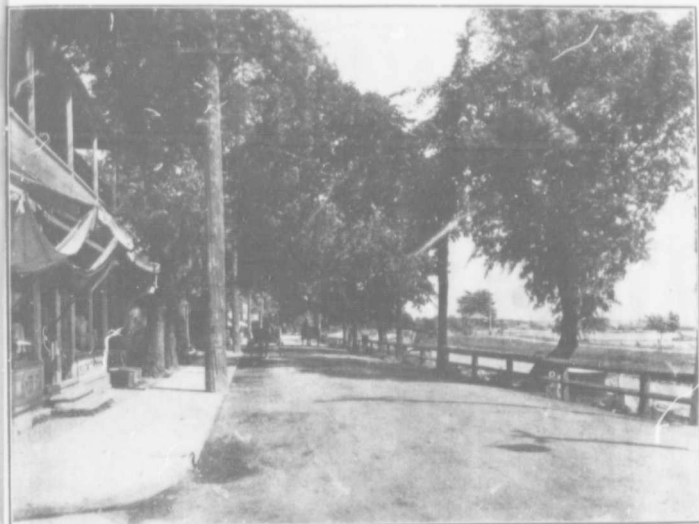
One of the greatest advantages of the manufacturer in Lachine is to have at his very door a market of nearly three quarter of a million people for his output.

Furthermore, Montreal is conceded to be the wealthiest city of its size in the world. Quite a number of magnificent art collections are to be found in the mansions of its richest citizens; the hotels, departmental stores, fur and jewellery shops are on a scale of lavishness not to be surpassed in the great european and american metropolis.

The standard of living in Canada is as high as in the United States, both in the city and country. Liberal prices are unhesitatingly paid for any article answering modern needs or representing an improvement over ordinary methods.

HOME OF GREAT INDUSTRIES

Following is a list of some of the foremost corporations of Lachine, with their capitalization: The Steel Company of Canada Limited, twenty five million dollars; Canadian Car & Foundry Company Limited, twelve million, five hundred thousand dollars; The National Breweries Limited, ten



A Unique Business Thoroughfare in America. — St. Joseph Street, Lachine.

million dollars; Allis-Chalmers & Bullock Limited, five million dollars; Dominion Bridge Company Limited, two million dollars; St. Lawrence Bridge Company Limited, five hundred thousand dollars; the latter has been awarded the contract by the Canadian Government for the new Quebec Bridge.

Other important industries are those of: Fiske Limited, Leather tanners, La Compagnie de Gaz de Lachine, The Asbestos Manufacturing Company Limited, Daly & Morin, Manufacturers of Window Shades & Brushes, Railway Signal Company of Canada Limited, McLaurin Brothers Limited, Tooke Brothers Limited, The Lachine Motor Works, and many others.

ELECTRIC POWER

At Lachine is an enormous development of hydro-electric power; it is generated by the formidable current of the St. Lawrence River which form the Lachine rapids. It is this electric muscle that drives the wheels of factories and propels the street cars in Lachine, Montreal and surrounding territory. It is Lachine electric power that turns night into day in shops and on streets, with thousands of lights, in Lachine and in Montreal.

For processes requiring high temperatures, electricity is by far the most economical source of heat. Welding and electro-chemical processes come



Montreal Light, Heat & Power Co.'s Power-House at Lachine

Montreal consumes more electrically transmitted water power than any other city of the world. The above shows one of the principal sources of that power, situated at Lachine Rapids on the St. Lawrence River. This power-house is one thousand feet in length; it is situated two-thirds of the way down from the up-stream end of a breakwater, one mile and a quarter in length, parallel to the shore and at right angles with that breakwater and the shore. The Power House is about 5 miles from Montreal and generates 16,000 H. P.



Entrance to Lachine Road — showing Nun's Island in Midstream.

within this consideration. There are several large industries carried on in Lachine, made possible by the electric power generated by the Lachine rapids.

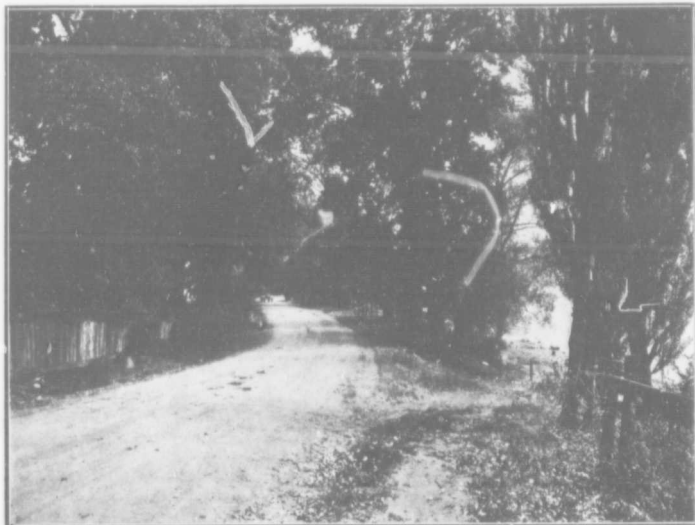
Power from coal will probably never be any cheaper than it is now; in time the cost is liable to go up rather than down. Hydro-electric power is already cheaper than coal. New discoveries are constantly being made which tend to lower its cost of production and distribution. The supply is constant. In practical use, it is more convenient than the handling of coal and ashes and does away with the smoke nuisance.

There is immense economy in getting a plant started with a system of operation that is not liable to be displaced. All the power house required to operate in Lachine is a hole in the wall to let in transmission wires.

The power is under municipal control, thus ensuring complete protection to consumers.

The Canadian Light and Power Company is also completing the installation of a power generating plant, which will still increase the supply of energy in Lachine.

Water is supplied to Manufacturers by the Municipality at exactly one-



Riverside Drive, Lachine.
Known to Automobileists as one of the Finest Roads in Canada.

third the price of Montreal; the waterworks have a sufficient capacity to answer the needs of the city for many years to come.

LAND

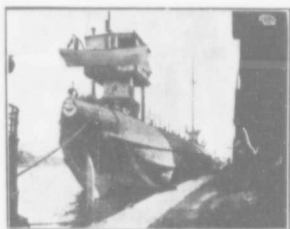
Perhaps the greatest advantage offered by Lachine to the establishment of new industries is the low cost of land.

The growth of Montreal since ten years has brought the price of its real estate to a point where the purchase of large tracts of land is almost out of question.

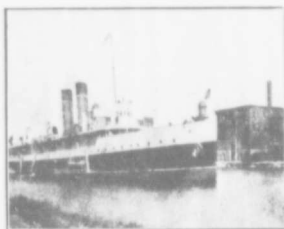
The value of Lachine real estate has not yet felt the advance, which the expansion of Montreal has brought in all the adjoining districts.

It is doubtful whether factory sites can be purchased in America, so near a metropolitan city at such favorable prices as in Lachine today.

All information and assistance required will be cheerfully supplied by the Secretary of the city of Lachine, in answer to inquiries from interested parties.



A Whaleback Screw Propeller in Lachine Canal.



Turbine Steamer Passing Through Lachine Canal.

HEAD OF LACHINE CANAL

Lachine Canal traces its origin as far back as the year 1700, when it had a depth of $2\frac{1}{2}$ feet. From time to time it was deepened until today its shallowest point is 14 feet deep; its width 200 feet, its length $8\frac{1}{4}$ miles, redeeming a decline of 45 feet.

It is opened to navigation for seven months in the year, from May to December.

Practically every product known to industry is carried through its locks, reaching the enormous tonnage of 2,760,752 tons, for the season of 1910.

A comparison will illustrate the amount of traffic in Lachine canal.

In 1909, 652,742 tons of grain passed down Lachine Canal as against 426,163 tons carried to Montreal via both the Canadian Pacific and the Grand Trunk Railway. The railroad figures for 1910 are not available, but the canal statistics show an increase over the preceding year of 136,919 tons.

In assembling his raw material or shipping his finished products, the manufacturer in Lachine will have the best transportation facilities.

FACTORY SITES.

There are plenty of available properties suitable for factory sites, with both railway and water shipping facilities in Lachine.



Grain Steamer of 78,000 Bushels Capacity Passing Through a Lock.

Goods may be shipped from the warehouse of a Lachine manufacture to almost any point of the world without a haul of one yard from the factory to the steamer or train.

The ground is exceptional for building purposes; the locality is noted for its highly salubrious conditions; cooling



THE LACHINE GAS COMPANY

Introducing in Canada the liquid gas manufactured under the process of Linus Wolf, Switzerland.—This gas marks a revolution in mechanics. Used with oxygen it produces a heat of over 7000° F.

For welding and cutting steel, cast iron and any metal including aluminium, it is unequalled in the world.

breezes from the magnificent St. Lawrence always alleviating the hottest days of summer.

It affords unusual attractions to the workingman, who, besides working under ideal climatic conditions, is enabled to live in his own cottage at a short distance and to enjoy the combined advantages of city and country life. Montreal, and the enormous tide of immigration,—yearly increasing,—affording an inexhaustible supply of skilled and unskilled manual labor.

As a residential centre Lachine has been famous ever since its discovery; it has long been the favorite resort of Montrealers during the hot season; its popularity in this direction waning only when the industrial advantages of its location becoming more and more recognized, the factories forced the summer residents farther up lake St. Louis.

CONCLUSION

The establishment of a manufacture in any given locality depending solely upon a question of dollars and cents, which in turn revolves upon the three problems of the assemblage of raw material, the distribution of the finished product and the labor supply, this booklet commands the attention of every manufacturer interested in producing his goods at less cost than his competitor.

If with the same capital a manufacturer can attain vastly bigger results in a different location, his choice should settle on that spot. His location affects his profits every day in the year.

Is your neighborhood as good and as profitable to you as Montreal city would be?

If not, come to Lachine.

The Secretary of the city of Lachine respectfully invites the correspondence of Manufacturers interested in building factories in or around the city of Montreal, the Commercial Metropolis of Canada.

Avantages Offerts Par

Lachine, P.Q., Canada

Aux Manufacturiers

Lachine possède les mêmes avantages que Montréal au point de vue des Manufactures; (a) pour l'expédition des produits; (b) les facilités des transactions de banque; (c) la ville de Montréal elle-même qui lui sert de marché; (d) d'immenses industries y sont déjà établies; (e) l'énergie électrique y est produite à prix minime.

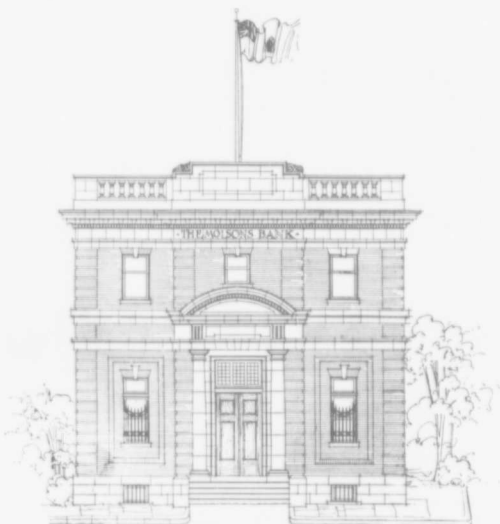
SITUATION

Dominant le canal qui porte son nom, Lachine est située sur l'île de Montréal, à neuf milles de la ville-même; distance que couvrent en 40 minutes du centre de la Métropole, un service régulier de tramways, à intervalles de dix et vingt minutes, au prix de dix cents, et plus de 40 convois de chemins de fer par jour.

Lachine a une population de 11,000 habitants.

FACILITES D'EXPEDITION

L'expédition par eau des marchandises s'effectue dans des conditions presque identiques à Lachine comme à Montréal; toutes les ressources du port de Montréal étant à la disposition des manufacturiers de Lachine. Par voie ferrée, Lachine se trouvant sur la ligne principale des chemins de fer du Grand Tronc et du Pacifique Canadien, et le tarif d'expédition de Montréal étant le même que celui de Lachine, les conditions là encore sont aussi favorables au manufacturier de Lachine qu'à celui de Montréal.



THE MOLSONS BANK, Lachine Branch

Incorporated 1855

Capital : \$4,000,000

Reserve : \$4,600,000

CAMIONNAGE

Il est maintenant reconnu qu'il est plus économique d'expédier des marchandises de Lachine à Montréal que de les transporter entre des parties éloignées de Montréal.

FINANCE

Le Manufacturier de Lachine, à deux pas de Montréal, se trouve dans le centre de la finance canadienne avec ses ressources immenses et sa réputation de solidité incomparable.

MARCHE

Au premier rang des avantages industriels de Lachine se place celui d'avoir à sa porte un marché de près de trois quarts de million d'habitants : le marché de Montréal, qui ne le cède en rien à celui des plus grandes capitales européennes et américaines.

PRINCIPALES INDUSTRIES

Parmi les principales industries établies à Lachine, nous pouvons citer : The Steel Company of Canada Limitée, capital vingt-cinq millions de dollars ; Canadian Car & Foundry Company Limitée, capital douze millions cinq cent mille dollars ; The National Breweries Limitée, capital, dix millions ; Allis-

Chalmers-Bullock Limitée, capital, cinq millions; Dominion Bridge Company Limitée, capital, deux millions; St. Lawrence Bridge Company Limitée, cinq cent mille dollars; cette dernière compagnie est concessionnaire du contrat du Gouvernement Canadien pour l'érection du nouveau pont de Québec.

ENERGIE ELECTRIQUE

Le pouvoir d'eau, créé par les rapides de Lachine, fournit à la ville une immense énergie électrique, qui est universellement reconnue comme la force industrielle la plus économique, et la plus pratique. Le pouvoir est sous le contrôle de la municipalité, protégeant ainsi le consommateur contre les exigences facilement exorbitantes d'une compagnie puissante. La Canadian Light and Power Company de plus, complète actuellement l'installation de ses usines, ajoutant ainsi son complément à l'énergie électrique de Lachine.

L'eau est fournie aux manufacturiers à un tiers du prix de Montréal, par un aqueduc municipal, en mesure de répondre aux besoins de la population pour plusieurs années à venir.

SITES AVANTAGEUX POUR MANUFACTURES

L'avantage principal que les manufacturiers trouveront dans un établissement à Lachine est le prix des terrains. L'augmentation prodigieuse de Montréal depuis quelques années a amené dans le prix de ses immeubles une plus-value qui porte l'achat d'un terrain de grande dimension hors du domaine pratique. Lachine, plus éloignée du centre de la ville, n'a pas subi cette hausse rapide. Il est douteux qu'il soit possible d'acheter en Amérique aujourd'hui, des terrains voisins d'une ville métropolitaine, à aussi bas prix qu'à Lachine. Toute demande de renseignements adressée au Secrétaire de la ville de Lachine à ce sujet, par des intéressés recevra une réponse immédiate et détaillée.

CANAL DE LACHINE

Le Canal de Lachine est ouvert à la navigation de Mai à Décembre. Pratiquement tous les produits en usage dans l'industrie passent entre ses écluses. Il transporte plus de grain que les chemins de Fer du Grand Tronc et du Pacifique réunis. Le manufacturier à Lachine dispose d'avantages de transport, pour assembler sa matière première et pour expédier ses produits, qu'il serait impossible de surpasser en Amérique.

CONCLUSION

Les considérations qui déterminent le choix de l'emplacement d'une manufacture étant d'ordre purement économique, les manufacturiers à qui ce livre est adressé, trouveront des avantages à Lachine qui s'imposent à leur attention. De la situation de leur usine dépendent leurs profits.

Le Secrétaire de la ville de Lachine a l'honneur d'inviter des communications de tous les Manufacturiers qui projettent de construire dans Montréal ou ses environs.

Le Manufacturier à Lachine

Est situé à proximité du canal,

sur la voie principale

Lachine Municipal Water works, which supply water to the manufacturer at exactly one-third the rate of Montreal.



L'eau à Lachine est fournie aux Manufacturiers à un tiers du prix chargé à Montréal.

des chemins de fer du Pacifique

et du Grand-Tronc,

dans une position industrielle

incomparable,

où les terrains sont à

bas prix

et où l'énergie

électrique est

immense.

Montréal la Métropole du Canada

Constitue le meilleur voisinage d'une industrie,

avec sa population de 750,000 âmes,

ses ressources financières,

et ses milliers de magasins.

Le Secrétaire de la ville de Lachine, P.Q., Canada, sollicite respectueusement la correspondance de manufacturiers intéressés à fonder une usine sur l'Île de Montréal.

COME TO LACHINE :

*you will be on the Lachine Canal,
on the trunk lines
of the Canadian Pacific
and Grand Trunk Railways,
in an exceptional manufacturing
location,
where land is cheap
and power unlimited.*

Montreal the Metropolis of Canada

*is a good neighbor for a manufacturer,
with its population of nearly
three quarter of a million,
its high standard of living,
and its thousands of stores.*

The Secretary of the city of Lachine, P.Q. Canada, respectfully invites the correspondence of Manufacturers interested in building factories on the Island of Montreal.

To the Mayors of Municipalities

- ☞ If you are interested in the progress and expansion of the city of which you are the first citizen;
- ☞ If your city offers natural advantages that would result in its selection for one or several manufactures, if their owners but knew of those advantages;
- ☞ If you realize that the establishment of a new manufacture in your city means an increase of population of at least five hundred and maybe five thousand people;
- ☞ And that the more people there are in a locality, the more valuable becomes its real estate, the more prosperous its business, the higher its credit and the greater its reputation;
- ☞ Then join the movement that is spreading through America today and advertise your city,—
- ☞ Remembering that the only people who should not advertise are those who have nothing to offer.
- ☞ And since we have it, we may as well let you know that our organization for gathering documentary and photographic information, local, industrial and official, for presenting it in its most attractive form to the most responsive public, and last but not least, for securing results, is unsurpassed in America.
- ☞ Write us.
- ☞ We will be delighted to submit you full details.

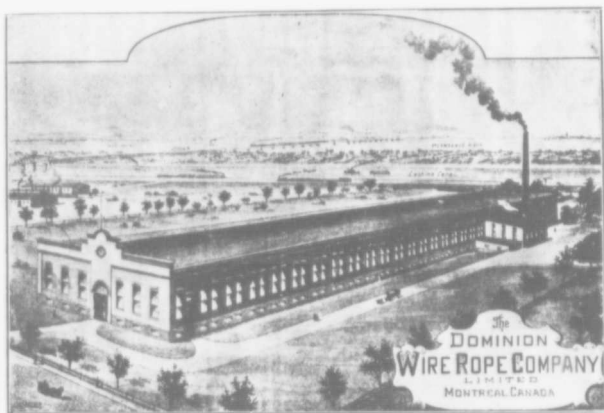
THE MOUNT-ROYAL PUBLISHING COMPANY

ESTABLISHED 1906.

ROYAL TRUST BUILDING

Montreal, Can.

Long Distance Telephone: Main 592.



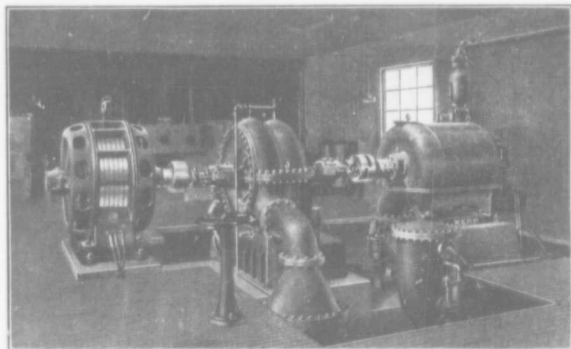
General View of the Works at Lachine, P.Q.

MANUFACTURERS OF ALL KINDS OF

Iron and Steel Wire Rope, for Dredges, Hoisting, Underground Haulage, Cableways, etc., etc.

FIRE SERVICE

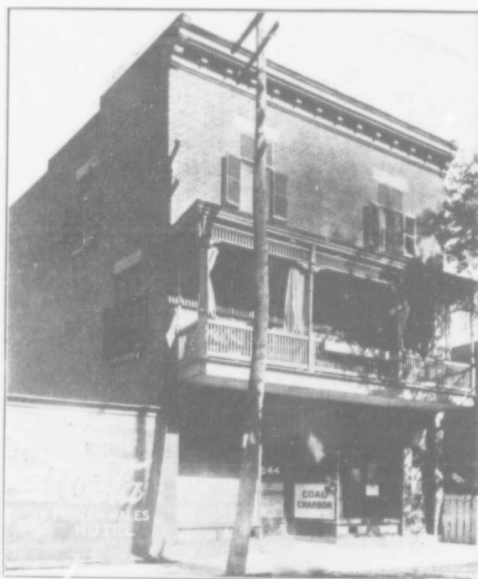
Fire service opens up another wide field of usefulness for the turbine pump and in this connection The John McDougall Caledonian Iron Works Co., Limited, of Montreal, Can., are able to offer a very valuable feature, namely, their patented double suction. By an ingenious application of the double suction, it is practicable to operate the same pump at either fire or domestic pressure and yet maintain a constant speed. The recent addition to the water works of Lachine, Que., illustrates the method of attaining this desirable end.



LACHINE WATER WORKS.

14" turbine pump. Capacity 5,000,000 Imperial gallons or 6,000,000 U.S. gallons per 24 hours.





A. LEGER & CO., —SUCCESSORS TO— Flour Mills Agency

DEALERS IN

Flour, Bran, Shorts, Moulee, Graham Flour, Cornmeal, Corn Flour, Brans, Peas, Split Peas, Rolled Oats, Oatmeal, Hay, Oats, Straw, Coal, etc.

Telephone 225

LACHINE, P.Q.

BANQUE D'HOCHELAGA

COIN DE LA RUE SAINT-JOSEPH et 20^{ème} AVE

R. BABY, Gérant.

FONDEE EN 1874

Capital autorisé \$4,000,000. Payé \$2,500,000. Réserve \$2,500,000

DIRECTEURS:

Honorable J. D. ROLLAND, Président.
 J. A. VAILLANCOURT, Eer. A. TURCOTTE, Eer. E. H. LEMAY, Eer.
 Hon. J. M. WILSON, Eer. Hon. F. L. BEIQUÉ, C.R. Col. CHAS. A. SMART.
 M. J. PRENDERGAST, Gérant-Général. F. G. LEDUC, Gérant.



Inside View of a Section of the Plant.

LACHINE MOTOR WORKS, Limited

Manufacturers of Gas, Gasoline and Coal Oil Engines, Marine and Stationary.

MARINE GASOLINE MOTOR A SPECIALTY.

No 14-21st AVENUE,

LACHINE, P.Q.

LA BANQUE PROVINCIALE DU CANADA

L. A. ACHIM, Gérant Succursale Lachine.

COIN DE LA RUE NOTRE-DAME ET 151ÈME RUE

44 Succursales dans la Province de Québec, d'Ontario et du Nouveau-Brunswick.

Capital Autorisé - - \$2,000,000. Capital Payé - - \$1,000,000.
Réserve et Surplus (31 déc. 1910). - \$438,674.48.

CONSEIL D'ADMINISTRATION

Président: M. H. LAPORTE, de la maison Laporte, Martin & Cie, Administrateur du Crédit Foncier Franco-Canadien; M. W. F. CARSLY, de Carsley & Co.; Honorable L. BEAUBIEN, Ex-Ministre de l'Agriculture; M. G. M. BOSWORTH, Vice-Président Canadian Pacific Railway Co.; M. ALPHONSE RACINE, de la maison A. Racine & Cie; M. L. O. BEAUCHEMIN, propriétaire de la Librairie Beauchemin, Limitée.

M. TANCREDE BIENVENU, Directeur-Gérant-Général; J. L. FORGET, Insp^rteur. M. ALEXANDRE BOYER, Secrétaire; M. J. A. TURCOT, Assistant-inspecteur.

The Garth Company

CONTRACTORS

Iron Founders, Plumbers,
Steamfitters and Machinists

MANUFACTURERS OF

Gas and Electric Fixtures, Cast Iron Flanged
and Screwed Fittings, etc.

OFFICE and FACTORY :

26-32 CRAIG STREET WEST

Show Rooms :

558 St. Catherine Street West

Iron Foundry :

Lagauchetiere and Maisonneuve Streets

*Electrical Apparatus and
Supplies of all Kinds.*

Motors, Generators, Transformers, Meters, Arc
Lamps, Switchboards, Tungsten Lamps,
Flaming Arc Lamps.

We carry complete lines in stock.

WRITE FOR PRICES

National Engineering Co., Limited

11, ST. SACRAMENT STREET

Telephone, Main 48.

MONTREAL

The Steel Company of Canada

Limited

Producers of

PIG IRON

Foundry Basic Malleable

BAR IRON BAR STEEL

Plain Bars and Twisted Squares for Reinforcement of Concrete

DOMINION FIELD FENCE

For Farm and Railroad Use

Wrought Pipe, Nuts and Bolts, Railroad Track Equipment, Nails,
Screws, Tacks, Horse Shoes, Wire.

DISTRICT SALES OFFICES :

HAMILTON - TORONTO - MONTREAL - WINNIPEG

W. A. MacLeunan, Vancouver, B.C.
J. B. H. Rickaby, Victoria, B.C.

H. G. Rogers, St. John, N.B.
Geo. D. Hatfield, Halifax, N.S.

R. & D. YOUNG

BREAD AND CAKE EXPERTS

Home-Made Bread a Specialty.

Our bread is baked exactly, the same as our City Bakers. Our Bake-House, swept by the breezes of the magnificent St. Lawrence river, is operated under hygienic conditions not to be thought of in a big city.

WHY not patronize your own Baker in Lachine?

A FREE LOAF FOR A TRIAL.

561, St. Joseph Street, - - Lachine, P.Q.

BELL TELEPHONE 61



Bell Tel. 139. 368 ST. JOSEPH ST. Head Office: LACHINE CITY

W. E. RANGER

Hardware, Builders' Supplies, Ciment, Tar Paper,
Martin-Senour Paints, Varnish, Glass.

Gasoline. Automobile and Motor Boat Supplies. Sporting Goods.



*Bell Tel. 195. Branch Store: 222 ST. JOSEPH, LACHINE LOCKS
J. E. RANGER, MANAGER*



THE MERCHANTS BANK OF CANADA

Established in 1804

Paid-Up Capital , \$6,000,000

Reserved Fund , 4,999,297

Board of Directors :

Sir Montagu Allan, C.V.O., President
Jonathan Hodgson, Vice-President
Thos. Long,
A. A. Allan, C. M. Hays, Alex. Barnett,
F. Orr, Lewis, E. W. Blackwell,
E. F. Heblen, General Manager
T. E. Meuret, Sup't. and Chief Insp'y.

HEAD OFFICE :

MONTREAL

This institution is one of the oldest and best known Banks doing business in Canada. Having 161 Branches, extending from the Atlantic to the Pacific, it has exceptional collecting and exchange facilities. Special attention given to Savings Accounts, with interest allowed at highest bank rate. General business transacted, including the accounts of Manufacturers, Merchants and others.

LACHINE BRANCH, Prov. of Que.

Corner 21st Avenue
& St. Joseph Streets

W. J. MacGowan, Manager

McLAURIN BROS., Limited

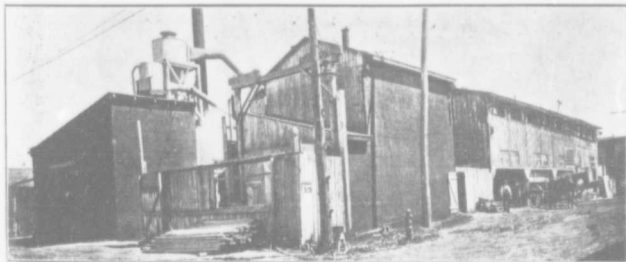
Lumber, Sashes, Doors, Blinds, Cross Arms

—AND—

All Kinds of Wood Work.

LACHINE,

Quebec





RANSON'S PHARMACY

DRUGGISTS AND OPTICIANS

HEAD OFFICE:
Cor. St. Joseph and 21st Streets

Specialties:

Emulsion of Cod Liver Oil,
Cherrins, Canadian Embro-
cation, Little Liver Pills,
Zain's Tooth-Ache Gum.

In 1885, Mr. E. A. Ranson founded the first prescription and drug store in Lachine. The wide experience of Mr. E. A. Ranson, gained through a long and extensive practice both in Canada and the United States, brought his concern to the immediate recognition of the public. Nothing was spared to put his establishment on an equal footing with the most up-to-date stores in the vicinity; a soda fountain, and complete departments of stationery and sundries, and an optician's parlor, being added to the original more restricted scope of his operations.

Since a few months, Mr. E. A. Ranson has opened a branch store, at **80 Notre-Dame Street**, which he manages in partnership with his two sons, and which bids fair to duplicate the success of his main concern.

James F. Murray

Tool Makers and General
Machinists and Blacksmiths



Experimental Work Taken.

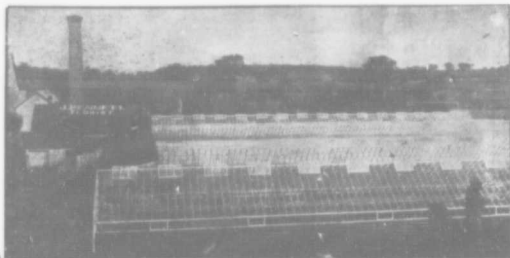
9th Avenue, Near
St. Joseph

- - Lachine

JOS. BENNETT FLORIST

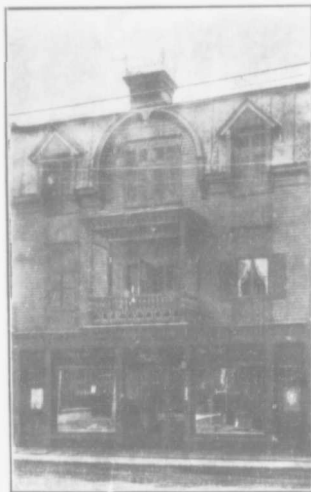
Choice Cut Flowers and Plants.

LACHINE, Que.



TELEPHONE 124

Box 128



The confectioner and catering
business of

Mr. F. H. McCORMICK

381 ST. JOSEPH STREET

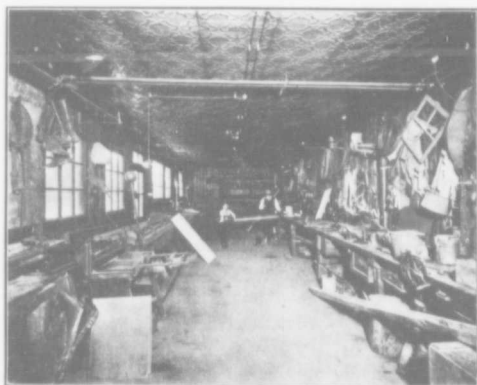
a photograph of which is reproduced here, was formed in 1908 and was the first of its kind in Lachine

Under the expert direction of its proprietor, the business met with immediate success, soon requiring comprehensive extensions and developing into a concern employing seven men and two delivery wagons to cope with the demands of the ever-increasing "clientèle".

The specialties of Mr. F. H. McCormick's are *high class confectionery and bonbons, dinner arrangement for balls, banquets and parties.*

It is worthy of note, that at the famous 1910 demonstration, tendered by Lachine to Mr. F. D. Monk, the banquet of 800 covers, was under the exclusive care of Mr. F. H. McCormick.

Bell Telephone 41



Bell Telephone 57

Boite B.P. 179

J. O. DESFORGES

Ferblantier,
Plombier,
Couvreur.

Poseur
d'Appareils à
Eau Chaude.

Lampes
Electriques



Tinsmith,
Plumber,
Roofer.

STEAM
FITTER

Electric
Lamps

443, RUE ST-JOSEPH,

- LACHINE



MARTIN & CO., LIMITED

Wholesale Dealers

In May, Straw, Grain, Flour and Provisions

101 ST. JOSEPH, LACHINE

TEL. TELEPHONE 48

Abelard Martin, President
J. A. Carignan, Manager

ROBERT'S MOTOR WORKS

Gas, Gasoline and Coal Oil Engines from 1 to 300 Horse Power.

Marine Engines 1, 2, 3, 4 and 6 Cylinders Built to order.

AUTOMOBILE REPAIRING

Specialty: Racing Engines.

The cup of the yachting Club of Canada of a value of \$500.00 was won by the Ranger II, whose motor was designed and constructed under the supervision of Mr. O. Robert—Fifteen years of practical experience and success have won for Mr. Robert the reputation of being one of the most expert engines builders in Canada.

Office and Works : 21st Avenue, - Lachine, P.Q.

TELEPHONE BELL 211

H. PAQUIN

MARCHAND DE

Meubles,
Poeles,
Tapis,
Prelarts,
etc., etc.

102 Notre-Dame Est, - Lachine, Centre

E. HEBERT

Constructor of Yachts and Boats.
 Laying Steam and Gasoline Engines.

ALL KINDS OF REPAIRS

Promptly and carefully executed. Storage, etc.

SPECIALTY:

Designing and Construction of the highest class
 of yachts and launches.

423, St. Joseph Street, - Lachine, P.Q.

Bell Tel. 274

Box 421