

P52-230

THE  
MECHANICS & LABOURERS'  
ALMANACK,  
1864,  
AND  
"THE CROOKSHANK ESTATE"  
ADVERTIZER.

---

TORONTO:  
W. G. CHEWETT & CO., KING STREET.

GRATIS.

MEC

"T

THE  
**MECHANICS & LABOURERS'**  
ALMANACK,  
**1864,**  
AND  
"THE CROOKSHANK ESTATE"  
ADVERTIZER.

---

TORONTO:  
W. C. CHEWETT & CO., KING STREET.  
—♦—  
**GRATIS.**



011190A

3421.

W. O. CHEWETT & CO., PRINTERS, KING STREET EAST, TORONTO.



MAR 24 1933

THE MECHANICS' AND LABOURERS' ALMANACK.

Day of Month.

1 2 3 4 5 6 7 8 9 10 11 12 13 14 15 16 17 18 19 20 21 22 23 24 25 26 27 28 29 30 31

by  
or the  
two )



## The Mechanics' and Labourers' Almanack.

## JANUARY.

1864.

TORONTO.										
Day of Month.		Day of Week.		Day of Year.		SUN.		MOON.		Moon's Meri- dian Zenith Distances.
						Rises.	Sets	Rises.	Sets.	
1	Friday .....	1	h. m. 7 35	4 33	h. m. a. m. 0 16	h. m. 11 04	47.7			
2	Saturday .....	2	7 35	4 33	0 16	11 31	52.1			
3	SUNDAY .....	3	7 35	4 34	1 20	p.m. 11 31	56.2			
4	Monday .....	4	7 35	4 36	2 25	0 37	59.8			
5	Tuesday .....	5	7 35	4 37	3 32	1 20	62.6			
6	Wednesday .....	6	7 34	4 38	4 37	2 11	64.3			
7	Thursday .....	7	7 34	4 39	5 41	3 12	64.6			
8	Friday .....	8	7 34	4 40	6 37	4 21	63.4			
9	Saturday .....	9	7 34	4 41	7 27	5 37	60.6			
10	SUNDAY .....	10	7 34	4 42	8 10	6 54	56.5			
11	Monday .....	11	7 33	4 43	8 47	8 11	50.7			
12	Tuesday .....	12	7 33	4 45	9 21	9 26	46.3			
13	Wednesday .....	13	7 32	4 46	9 52	10 38	40.9			
14	Thursday .....	14	7 32	4 47	10 23	11 49	35.9			
15	Friday .....	15	7 32	4 48	10 54	a. m. 8 15	31.5			
16	Saturday .....	16	7 31	4 49	11 27	0 57	27.8			
17	SUNDAY .....	17	7 30	4 50	p.m. 4 0 45	2 02	25.1			
18	Monday .....	18	7 30	4 52	1 30	3 04	23.3			
19	Tuesday .....	19	7 29	4 53	2 20	4 01	22.7			
20	Wednesday .....	20	7 28	4 54	3 14	5 39	23.1			
21	Thursday .....	21	7 28	4 56	4 11	6 18	24.4			
22	Friday .....	22	7 27	4 57	5 10	7 25	26.7			
23	Saturday .....	23	7 27	4 58	6 09	8 54	29.7			
24	SUNDAY .....	24	7 26	4 59	7 07	9 54	33.3			
25	Monday .....	25	7 25	5 01	8 07	10 18	37.3			
26	Tuesday .....	26	7 24	5 02	9 06	11 08	41.6			
27	Wednesday .....	27	7 23	5 03	10 06	12 03	46.0			
28	Thursday .....	28	7 22	5 04	11 08	1 03	50.4			
29	Friday .....	29	7 21	5 06	a. m. 0 10	2 03	54.5			
30	Saturday .....	30	7 20	5 08		3 03	58.2			
31	SUNDAY .....	31	7 19	5 09		4 03				

1864.

THE MECHANICS' AND LABOURERS' ALMANACK.

THE MECHANICS' AND LABOURERS' ALMANACK.

1864.

♊ This is the first month of the year. Its zodiacal sign is CAPRICORNUS or the Goat. It derives its name from *Janus*, a deity represented by two faces, because he was acquainted with past and future events.

## The Mechanics' and Labourers' Almanack.

## FEBRUARY.

1864.

THE MECHANICS' AND LABOURERS' ALMANACK.									
Day of Month.		Day of Week.	Day of Year.		TORONTO.				Moon's Meri- dian Zenith Distances.
Day of Week.			Rises.	Sets.	Moon.		Sets.		
1	Monday .....	32	h. m.	h. m.	h. m.	h. m.	h. m.	°	
2	Tuesday .....	33	7 17	5 11	1 15	11 14	11 14	61.3	
3	Wednesday .....	34	7 16	5 12	2 18	11 59	11 59	63.5	
4	Thursday .....	35	7 15	5 13	3 21	p.m. 5.58	p.m. 5.58	64.5	
5	Friday .....	36	7 14	5 14	4 20	4 20	1 56	64.1	
6	Saturday .....	37	7 13	5 15	5 13	5 13	3 07	62.2	
7	SUNDAY .....	38	7 11	5 17	6 40	5 41	4 23	68.9	
8	Monday .....	39	7 10	5 18	7 16	6 59	5 41	64.4	
9	Tuesday .....	40	7 09	5 19	7 49	8 16	6 59	49.2	
10	Wednesday .....	41	7 08	5 21	8 22	7 19	8 16	43.7	
11	Thursday .....	42	7 07	5 22	8 54	8 22	9 30	38.3	
12	Friday .....	43	7 05	5 24	9 28	10 41	10 41	33.5	
13	Saturday .....	44	7 04	5 25	10 04	11 50	11 50	29.4	
14	SUNDAY .....	45	7 02	5 26	10 44	a. m.	a. m.	26.2	
15	Monday .....	46	7 00	5 28	11 29	0 54	0 54	24.0	
16	Tuesday .....	47	6 59	5 29	11 29	1 54	1 54	23.0	
17	Wednesday .....	48	6 58	5 30	p.m. 18	2 48	2 48	23.0	
18	Thursday .....	49	6 56	5 32	1 10	3 36	3 36	24.1	
19	Friday .....	50	6 55	5 33	2 05	4 18	4 18	26.0	
20	Saturday .....	51	6 53	5 35	3 03	4 55	4 55	28.7	
21	SUNDAY .....	52	6 52	5 36	4 01	5 27	5 27	32.1	
22	Monday .....	53	6 50	5 38	5 01	6 00	6 00	35.9	
23	Tuesday .....	54	6 49	5 39	6 00	6 23	6 23	40.1	
24	Wednesday .....	55	6 48	5 40	6 59	6 49	6 49	.....	
25	Thursday .....	56	6 46	5 41	7 59	7 14	7 14	44.5	
26	Friday .....	57	6 44	5 43	9 00	7 40	7 40	48.8	
27	Saturday .....	58	6 42	5 44	10 02	8 8	8 8	53.0	
28	SUNDAY .....	59	6 41	5 45	11 05	8 39	8 39	56.8	
29	Monday .....	60	6 39	5 47	a. m.	9 14	9 14	60.1	
			6 37	5 49	0 08	9 56	9 56	62.6	

1864.

## THE MECHANICS' AND LABOURERS' ALMANACK.

1864.

☿ This month has Aquarius or the Water-bearer for its zodiacal sign; its name is from the *Februa*, or sacrifices offered to the manes of the Gods at this season.

## THE MECHANICS' AND LABOURERS' ALMANACK.

## THE MECHANICS' AND LABOURER'S ALMANACK.

The

☿  
first  
Wan

anack.

Moon's Meri-  
dian Zenith  
Distances.

61.3  
63.5  
64.5  
64.1  
62.2  
68.9  
54.4  
49.2  
43.7  
38.3  
33.5  
29.4  
26.2  
24.0  
23.0  
23.0  
24.1  
26.0  
28.7  
32.1  
35.9  
40.1  
.....  
44.5  
48.8  
53.0  
56.8  
60.1  
62.6

THE MECHANICS' AND LABOURERS' ALMANACK.

zodiacal sign;  
manes of the

## The Mechanics' and Labourers' Almanack.

## MARCH.

1864.

THE MECHANICS' AND LABOURER'S ALMANACK.

Day of Month.	Day of Week.	Day of Year.	TORONTO.				Moon's Meri- dian Zenith Distances.
			SUN.		MOON.		
			Rises.	Sets.	Rises.	Sets.	
			<i>h. m.</i>	<i>h. m.</i>	<i>h. m.</i>	<i>h. m.</i>	
1	Tuesday .....	61	6 36	5 48	1 09	10 44	64.0
2	Wednesday ...	62	6 35	5 49	2 07	11 41	64.2
3	Thursday .....	63	6 33	5 51	3 00	p.m.46	63.1
4	Friday .....	64	6 32	5 52	3 48	1 57	60.5
5	Saturday .....	65	6 30	5 53	4 31	3 12	56.8
6	SUNDAY .....	66	6 28	5 54	5 08	4 29	52.1
7	Monday .....	67	6 26	5 56	5 43	5 46	46.7
8	Tuesday .....	68	6 25	5 57	6 16	7 02	41.3
9	Wednesday ...	69	6 23	5 58	6 50	8 17	36.1
10	Thursday .....	70	6 21	5 59	7 24	9 29	31.5
11	Friday .....	71	6 19	6 01	8 00	10 38	27.7
12	Saturday .....	72	6 17	6 02	8 40	11 41	25.1
13	SUNDAY .....	73	6 16	6 03	9 24	a.m.	23.5
14	Monday .....	74	6 14	6 04	10 12	0 39	23.1
15	Tuesday .....	75	6 12	6 06	11 04	1 31	23.8
16	Wednesday ...	76	6 10	6 07	11 59	2 15	25.4
17	Thursday .....	77	6 08	6 08	p.m.56	2 54	27.9
18	Friday .....	78	6 07	6 09	1 54	3 28	31.0
19	Saturday .....	79	6 05	6 11	2 53	3 58	34.7
20	SUNDAY .....	80	6 03	6 12	3 52	4 26	38.7
21	Monday .....	81	6 01	6 13	4 51	4 52	43.0
22	Tuesday .....	82	6 00	6 14	5 51	5 18	47.3
23	Wednesday ...	83	5 58	6 15	6 52	5 44	.....
24	Thursday .....	84	5 56	6 16	7 55	6 12	51.6
25	Friday .....	85	5 54	6 18	8 57	6 42	55.6
26	Saturday .....	86	5 52	6 19	10 00	7 16	59.0
27	SUNDAY .....	87	5 50	6 20	11 02	7 56	61.7
28	Monday .....	88	5 49	6 21	a.m.	8 42	63.5
29	Tuesday .....	89	5 47	6 23	0 01	9 36	64.1
30	Wednesday ...	90	5 45	6 24	0 55	10 37	63.4
31	Thursday .....	91	5 43	6 25	1 43	11 43	61.4

1864.

THE MECHANICS' AND LABOURERS' ALMANACK.

✕ March is the third month of the year; with the ancients it was the first. The name is said to be derived from that of *Mars*, the God of War; its zodiacal sign is Pisces, the Fishes.



## The Mechanics' and Labourers' Almanack.

APRIL.

1864.

THE MECHANICS' AND LABOURERS' ALMANACK.

Day of Month.	Day of Week.	Day of Year.	TORONTO.				Moon's Meridian Zenith Distances.
			SUN.		MOON.		
			Rises.	Sets.	Rises.	Sets.	
1	Friday .....	92	h. m.	h. m.	h. m.	h. m.	58.2
2	Saturday .....	93	5 41	6 27	2 26	2 07	54.1
3	SUNDAY .....	94	5 39	6 28	3 04	3 22	49.2
4	Monday .....	95	5 37	6 29	3 39	3 22	48.9
5	Tuesday .....	96	5 35	6 31	4 12	4 36	38.7
6	Wednesday .....	97	5 33	6 32	4 45	5 50	33.8
7	Thursday .....	98	5 31	6 33	5 18	7 04	29.6
8	Friday .....	99	5 30	6 34	5 54	8 15	26.3
9	Saturday .....	100	5 28	6 36	6 32	9 25	24.2
10	SUNDAY .....	101	5 26	6 37	7 15	10 25	23.3
11	Monday .....	102	5 24	6 38	8 03	11 20	23.6
12	Tuesday .....	103	5 23	6 39	8 54	a. m.	24.9
13	Wednesday .....	104	5 22	6 40	9 49	0 09	27.0
14	Thursday .....	105	5 20	6 41	10 46	1 27	29.9
15	Friday .....	106	5 18	6 42	11 45	1 59	33.4
16	Saturday .....	107	5 16	6 44	p.m. 48	2 27	37.3
17	SUNDAY .....	108	5 14	6 45	1 42	3 27	41.4
18	Monday .....	109	5 12	6 46	2 41	4 27	45.7
19	Tuesday .....	110	5 11	6 47	3 41	5 20	50.0
20	Wednesday .....	111	5 10	6 48	4 41	6 13	54.1
21	Thursday .....	112	5 08	6 50	5 44	7 04	57.8
22	Friday .....	113	5 06	6 51	6 47	8 01	60.9
23	Saturday .....	114	5 04	6 52	7 51	9 01	62.9
24	SUNDAY .....	115	5 03	6 53	8 55	10 01	63.9
25	Monday .....	116	5 02	6 54	9 55	11 01	68.6
26	Tuesday .....	117	5 00	6 56	10 51	12 01	73.2
27	Wednesday .....	118	4 59	6 57	11 41	a. m.	68.0
28	Thursday .....	119	4 57	6 58	0 25	9 36	62.0
29	Friday .....	120	4 55	7 00	1 04	10 45	55.4
30	Saturday .....	121	4 54	7 01	1 39	11 56	50.9
			4 53	7 01		p. 1 08	

1864.

THE MECHANICS' AND LABOURERS' ALMANACK.

1864.

of This is the fourth month of the year, having for its sign ARIES, the Ram. Its Latin name *Aprilis*, is from *Aperio*, to open or set forth.

THE MECHANICS' AND LABOURERS' ALMANACK.

The

Day of Month.

nack.

Moon's Meri-  
dian Zenith  
Distances.

58.2  
54.1  
49.2  
43.9  
38.7  
33.8  
29.6  
26.3  
24.2  
23.3  
23.6  
24.9  
27.0  
29.9  
33.4  
37.3  
41.4  
45.7  
50.0  
54.1  
.....  
57.8  
60.9  
62.9  
63.9  
63.6  
62.0  
59.2  
55.4  
50.9

THE MECHANICS' AND LABOURERS' ALMANACK.

sign ARIES,  
open or set

## The Mechanics' and Labourers' Almanack.

M A Y .

1864.

THE MECHANICS' AND LABOURERS' ALMANACK.

Day of Month.	Day of Week.	Day of Year.	TORONTO.						Moon's Meri- dian Zenith Distances.	
			SUN.		MOON.					
			Rises.	Sets.	Rises.	Sets.				
			<i>h. m.</i>	<i>h. m.</i>	<i>h. m.</i>	<i>h. m.</i>	<i>o</i>			
1	SUNDAY .....	122	4 51	7 03	2 11	2 20	45.9			
2	Monday .....	123	4 50	7 04	2 43	3 31	40.8			
3	Tuesday .....	124	4 49	7 05	3 14	4 42	35.8			
4	Wednesday ...	125	4 47	7 06	3 50	5 54	31.4			
5	Thursday .....	126	4 45	7 07	4 26	7 03	27.7			
6	Friday .....	127	4 44	7 08	5 07	8 08	25.1			
7	Saturday .....	128	4 43	7 09	5 53	9 07	23.6			
8	SUNDAY .....	129	4 42	7 10	6 42	9 59	23.4			
9	Monday .....	130	4 41	7 11	7 37	10 46	24.2			
10	Tuesday .....	131	4 40	7 12	8 34	11 24	26.1			
11	Wednesday ...	132	4 38	7 14	9 32	11 57	28.7			
12	Thursday .....	133	4 37	7 15	10 32	a. m.	31.9			
13	Friday .....	134	4 36	7 16	11 31	0 28	35.7			
14	Saturday .....	135	4 35	7 17	p.m. 29	0 56	39.7			
15	SUNDAY .....	136	4 34	7 18	1 27	1 21	43.9			
16	Monday .....	137	4 33	7 19	2 29	1 46	48.2			
17	Tuesday .....	138	4 32	7 20	3 30	2 14	52.4			
18	Wednesday ...	139	4 31	7 21	4 32	2 42	56.3			
19	Thursday .....	140	4 30	7 22	5 36	3 14	59.7			
20	Friday .....	141	4 29	7 23	6 42	3 49	62.2			
21	Saturday .....	142	4 28	7 24	7 45	4 33	.....			
22	SUNDAY .....	143	4 27	7 25	8 44	5 24	63.7			
23	Monday .....	144	4 27	7 26	9 37	6 21	63.9			
24	Tuesday .....	145	4 27	7 27	10 24	7 26	62.7			
25	Wednesday ...	146	4 26	7 28	11 03	8 36	60.2			
26	Thursday .....	147	4 25	7 29	11 42	9 45	56.7			
27	Friday .....	148	4 24	7 30	a. m.	10 59	52.4			
28	Saturday .....	149	4 23	7 31	0 15	p.m. 10	47.5			
29	SUNDAY .....	150	4 23	7 31	0 46	1 21	42.4			
30	Monday .....	151	4 22	7 32	1 17	2 32	37.5			
31	Tuesday .....	152	4 21	7 33	1 49	3 40	32.9			

1864.

1864.

THE MECHANICS' AND LABOURERS' ALMANACK.

8 May, the fifth month of our year, was the second in the old Alban Calendar; our Saxon ancestors, after the Romans, called it *Maius* Month. Zodiacal sign—TAURUS, the Bull.

# The Mechanics' and Labourers' Almanack.

## JUNE.

1864.

THE MECHANICS' AND LABOURERS' ALMANACK.

Day of Month.	Day of Week.	Day of Year.	TORONTO.						Moon's Meri- dian Zenith Distances.
			SUN.		MOON.				
			Rises.	Sets.	Rises.	Sets.			
			<i>h. m.</i>	<i>h. m.</i>	<i>h. m.</i>	<i>h. m.</i>			
1	Wednesday ...	153	4 21	7 34	2 24	4 49	29.1		
2	Thursday.....	154	4 21	7 35	3 03	5 54	26.1		
3	Friday .....	155	4 20	7 36	3 56	6 56	24.1		
4	Saturday.....	156	4 20	7 36	4 34	7 51	23.3		
5	SUNDAY.....	157	4 19	7 37	5 25	8 39	23.7		
6	Monday .....	158	4 19	7 37	6 22	9 21	25.1		
7	Tuesday .....	159	4 19	7 38	7 20	9 56	27.4		
8	Wednesday ...	160	4 19	7 39	8 20	10 28	30.5		
9	Thursday.....	161	4 18	7 40	9 20	10 58	34.0		
10	Friday .....	162	4 18	7 40	10 16	11 23	37.9		
11	Saturday.....	163	4 18	7 40	11 15	11 49	42.1		
12	SUNDAY.....	164	4 18	7 41	p.m.16	a. m.	46.4		
13	Monday .....	165	4 18	7 42	1 15	0 15	50.6		
14	Tuesday .....	166	4 18	7 42	2 16	0 42	54.6		
15	Wednesday ...	167	4 18	7 42	3 19	1 11	58.2		
16	Thursday.....	168	4 18	7 42	4 24	1 45	61.1		
17	Friday .....	169	4 18	7 43	5 28	2 25	63.1		
18	Saturday.....	170	4 18	7 44	6 29	3 12	64.0		
19	SUNDAY.....	171	4 18	7 44	7 27	4 06	.....		
20	Monday .....	172	4 18	7 44	8 18	5 10	63.4		
21	Tuesday .....	173	4 19	7 45	9 03	6 19	61.4		
22	Wednesday ...	174	4 19	7 45	9 42	7 32	58.2		
23	Thursday .....	175	4 19	7 45	10 18	8 46	54.0		
24	Friday .....	176	4 19	7 45	10 49	9 59	49.2		
25	Saturday .....	177	4 19	7 45	11 21	11 12	44.1		
26	SUNDAY.....	178	4 20	7 45	11 53	p.m.23	39.1		
27	Monday .....	179	4 21	7 45	a. m.	1 40	34.4		
28	Tuesday .....	180	4 21	7 45	0 26	2 39	30.3		
29	Wednesday ...	181	4 22	7 44	1 02	3 46	27.0		
30	Thursday.....	182	4 22	7 44	1 42	4 47	24.7		

1864.

1864.

THE MECHANICS' AND LABOURERS' ALMANACK.

¶ This is the sixth month of the year, and has for its sign GEMINI, the Twins; the most probable derivation of its name is from *Junio*, in honor of whom a festival was celebrated at the beginning of the month.

Th

THE MECHANICS' AND LABOURERS' ALMANACK.

 ing  
Jul



ack.

## The Mechanics' and Labourers' Almanack.

## JULY.

1864.

## TORONTO.

TORONTO.											
Day of Month.			Day of Week.		Day of Year.		SUN.		MOON.		Moon's Meri- dian Zenith Distances.
							Rises.		Sets.		
							Rises.		Sets.		
1	Friday .....	183	h. m.	h. m.	h. m.	h. m.	h. m.	h. m.	h. m.	h. m.	
2	Saturday .....	184	4 23	7 45	2 28	5 44	23.4				
3	SUNDAY.....	185	4 24	7 44	3 18	6 34	24.4				
4	Monday .....	186	4 24	7 44	4 15	7 20	26.4				
5	Tuesday .....	187	4 25	7 43	5 09	8 30	29.1				
6	Wednesday .....	188	4 26	7 43	6 08	9 20	32.5				
7	Thursday .....	189	4 27	7 43	7 07	10 18	36.3				
8	Friday .....	190	4 27	7 43	8 07	11 12	40.3				
9	Saturday .....	191	4 28	7 42	9 05	12 05	44.5				
10	SUNDAY.....	192	4 29	7 41	10 05	1 04	48.7				
11	Monday .....	193	4 29	7 41	11 04	2 05	52.8				
12	Tuesday .....	194	4 30	7 40	p.m. 03	3 09	56.5				
13	Wednesday .....	195	4 31	7 40	1 04	4 11	62.2				
14	Thursday .....	196	4 32	7 40	2 05	5 11	66.1				
15	Friday .....	197	4 33	7 39	3 09	6 25	69.9				
16	Saturday .....	198	4 34	7 38	4 11	7 41	.....				
17	SUNDAY.....	199	4 35	7 37	5 11	8 51	51.4				
18	Monday .....	200	4 35	7 37	6 05	9 54	46.8				
19	Tuesday .....	201	4 36	7 36	6 55	10 10	41.0				
20	Wednesday .....	202	4 37	7 35	7 38	11 21	36.1				
21	Thursday .....	203	4 38	7 34	8 15	12 05	25.5				
22	Friday .....	204	4 39	7 33	8 51	1 01	23.9				
23	Saturday .....	205	4 40	7 32	9 54	2 05	24.1				
24	SUNDAY.....	206	4 41	7 31	10 29	3 09	25.7				
25	Monday .....	207	4 42	7 30	11 04	4 11	.....				
26	Tuesday .....	208	4 43	7 29	11 48	5 11	56.1				
27	Wednesday .....	209	4 44	7 29	12 41	6 25	61.4				
28	Thursday .....	210	4 45	7 28	.....	7 41	66.1				
29	Friday .....	211	4 46	7 26	8 m.	8 57	69.9				
30	Saturday .....	212	4 47	7 25	0 26	9 54	.....				
31	SUNDAY.....	213	4 48	7 24	1 15	10 45	52.8				

## THE MECHANICS' AND LABOURERS' ALMANACK.

1864.

## THE MECHANICS' AND LABOURERS' ALMANACK.

25 July is the seventh month of the year—according to ancient reckoning it was the fifth; M. Anthony donominated it July in compliment to Julius Cæsar, who was born in it. CANCER, the Crab, is its zodiacal sign.

gen GEMINI,  
om June, in  
the month.

## THE MECHANICS' AND LABOURERS' ALMANACK.

	Moon's Meri- dian Zenith Distances.
29.1	29.1
26.1	26.1
24.1	24.1
23.8	23.8
23.7	23.7
26.1	26.1
27.4	27.4
30.5	30.5
34.0	34.0
37.9	37.9
42.1	42.1
46.4	46.4
50.6	50.6
54.6	54.6
58.2	58.2
61.1	61.1
63.1	63.1
64.0	64.0
.....	.....
68.4	68.4
61.4	61.4
58.2	58.2
54.0	54.0
49.2	49.2
44.1	44.1
39.1	39.1
34.4	34.4
30.8	30.8
27.0	27.0
24.7	24.7

# The Mechanics' and Labourers' Almanack.

## AUGUST.

1864.

TORONTO.		SUN.		MOON.		Moon's Meri- dian Zenith Distances.
Day of Month.	Day of Week.	Day of Year.	Rises.	Sets.	Rises.	Sets.
1	Monday .....	214	h. m.	h. m.	h. m.	h. m.
2	Tuesday .....	215	4 49	7 23	4 01	6 32
3	Wednesday .....	216	4 51	7 21	5 01	7 03
4	Thursday .....	217	4 52	7 20	6 00	7 31
5	Friday .....	218	4 53	7 19	6 57	7 57
6	Saturday .....	219	4 54	7 18	7 55	8 22
7	SUNDAY .....	220	4 55	7 17	8 54	8 48
8	Monday .....	221	4 56	7 16	9 53	9 16
9	Tuesday .....	222	4 57	7 15	10 52	9 44
10	Wednesday .....	223	4 58	7 14	11 53	10 18
11	Thursday .....	224	4 59	7 13	p.m. 54	10 56
12	Friday .....	225	5 00	7 12	1 56	11 41
13	Saturday .....	226	5 02	7 10	2 54	a.m. 63.7
14	SUNDAY .....	227	5 03	7 08	3 51	0 33
15	Monday .....	228	5 04	7 07	4 41	1 35
16	Tuesday .....	229	5 05	7 06	5 28	2 43
17	Wednesday .....	230	5 06	7 05	6 09	3 57
18	Thursday .....	231	5 07	7 04	6 46	5 15
19	Friday .....	232	5 08	7 01	7 20	6 31
20	Saturday .....	233	5 09	6 59	7 56	7 48
21	SUNDAY .....	234	5 10	6 57	8 29	9 04
22	Monday .....	235	5 12	6 54	9 06	10 17
23	Tuesday .....	236	5 13	6 53	9 44	11 28
24	Wednesday .....	237	5 14	6 51	10 26	p.m. 33
25	Thursday .....	238	5 15	6 49	11 14	1 32
26	Friday .....	239	5 16	6 48	a.m. 0 04	2 27
27	Saturday .....	240	5 17	6 46	0 54	3 15
28	SUNDAY .....	241	5 18	6 45	1 00	3 57
29	Monday .....	242	5 19	6 43	1 56	4 38
30	Tuesday .....	243	5 20	6 41	2 55	5 05
31	Wednesday .....	244	5 21	6 39	3 58	5 35
			5 23	6 37	4 50	6 01

THE MECHANICS' AND LABOURERS' ALMANACK.

Q. This month was named by the Romans August, in compliment to the Emperor Augustus. It is the eighth month in the year. Its zodiacal sign is Leo, the Lion.

1864.

THE MECHANICS' AND LABOURERS' ALMANACK.

Th

ack.

Moon's Meri-  
dian Zenith  
Distances.

°  
28.1  
31.2  
34.8  
38.8  
42.9  
47.1  
51.1  
54.9  
58.3  
61.0  
62.9  
63.7  
63.2  
61.4  
58.2  
54.0  
.....  
48.9  
43.6  
38.3  
33.6  
29.5  
26.5  
24.5  
23.7  
24.0  
25.2  
27.4  
30.2  
33.6  
37.4

## THE MECHANICS' AND LABOURERS' ALMANACK.

compliment to  
Its zodiacal

## The Mechanics' and Labourers' Almanack.

## SEPTEMBER.

1864.

THE MECHANICS' AND LABOURERS' ALMANACK.

Day of Month.	Day of Week.	Day of Year.	TORONTO.				Moon's Meri- dian Zenith Distances.
			SUN.		MOON.		
			Rises.	Sets.	Rises.	Sets.	
			<i>h. m.</i>	<i>h. m.</i>	<i>h. m.</i>	<i>h. m.</i>	°
1	Thursday.....	245	5 24	6 35	5 49	6 28	41.4
2	Friday .....	246	5 26	6 33	6 48	6 54	45.6
3	Saturday.....	247	5 27	6 32	7 47	7 20	49.7
4	SUNDAY .....	248	5 28	6 30	8 45	7 48	53.6
5	Monday .....	249	5 29	6 28	9 45	8 20	57.1
6	Tuesday .....	250	5 30	6 27	10 46	8 56	59.9
7	Wednesday ...	251	5 31	6 24	11 45	9 36	62.1
8	Thursday .....	252	5 32	6 23	p.m.44	10 26	63.3
9	Friday .....	253	5 33	6 21	1 38	11 21	63.4
10	Saturday.....	254	5 34	6 19	2 31	a.m.	62.2
11	SUNDAY.....	255	5 35	6 18	3 17	0 24	59.8
12	Monday .....	256	5 36	6 15	4 00	1 34	56.2
13	Tuesday .....	257	5 38	6 13	4 37	2 47	51.6
14	Wednesday ...	258	5 39	6 12	5 13	4 02	47.5
15	Thursday .....	259	5 40	6 10	5 48	5 19	.....
16	Friday .....	260	5 41	6 08	6 23	6 35	41.1
17	Saturday.....	261	5 42	6 07	7 00	7 52	36.0
18	SUNDAY .....	262	5 43	6 04	7 38	9 06	31.5
19	Monday .....	263	5 44	6 03	8 22	10 15	27.9
20	Tuesday .....	264	5 46	6 01	9 09	11 11	25.4
21	Wednesday ...	265	5 47	5 59	9 59	p.m.19	24.1
22	Thursday .....	266	5 48	5 57	10 55	1 09	24.0
23	Friday .....	267	5 49	5 56	11 50	1 55	24.9
24	Saturday.....	268	5 50	5 53	a.m.	2 31	26.7
25	SUNDAY.....	269	5 51	5 52	0 48	3 06	29.4
26	Monday .....	270	5 52	5 50	1 47	3 38	32.6
27	Tuesday .....	271	5 53	5 48	2 44	4 04	36.2
28	Wednesday ...	272	5 55	5 46	3 43	4 31	40.2
29	Thursday.....	273	5 56	5 45	4 41	4 57	44.3
30	Friday .....	274	5 57	5 42	5 41	5 24	48.4

1864.

## THE MECHANICS' AND LABOURERS' ALMANACK.

☿ This is the ninth month of the year, though anciently the seventh : hence its name, *Septem*, and *ember*, from the rainy season usually commencing at this period. Zodiacal sign *Virgo*, the *Virgin*.



## The Mechanics' and Labourers' Almanack.

## OCTOBER.

1864.

TORONTO.									
Day of Month.		Day of Week.		SUN.		MOON.		Moon's Meri- dian Zenith Distances.	
				Rises.	Sets.	Rises.	Sets.		
1	Saturday ....	275	h. m.	5 41	h. m.	6 39	h. m.	52.3	°
2	SUNDAY .....	276	5 58	5 39	7 38	5 52	6 22	55.9	
3	Monday .....	277	6 00	5 37	8 39	6 58	59.0		
4	Tuesday .....	278	6 02	5 35	9 38	7 37	63.4		
5	Wednesday ..	279	6 03	5 34	10 38	8 23	68.9		
6	Thursday .....	280	6 04	5 32	11 33	9 15	63.3		
7	Friday .....	281	6 05	5 30	p.m. 25	10 14	62.6		
8	Saturday .....	282	6 07	5 28	1 12	11 18	60.7		
9	SUNDAY .....	283	6 08	5 27	1 54	a.m.	57.7		
10	Monday .....	284	6 09	5 25	2 33	0 26	53.7		
11	Tuesday .....	285	6 10	5 23	3 09	1 39	49.0		
12	Wednesday ..	286	6 12	5 21	3 42	2 53	48.8		
13	Thursday .....	287	6 13	5 20	4 17	4 09	38.6		
14	Friday .....	288	6 14	5 18	4 52	5 24	33.8		
15	Saturday .....	289	6 15	5 16	5 30	6 39	.....		
16	SUNDAY .....	290	6 16	5 15	6 12	7 52	29.7		
17	Monday .....	291	6 18	5 13	6 57	9 12	26.6		
18	Tuesday .....	292	6 19	5 12	7 50	10 03	24.0		
19	Wednesday ..	293	6 20	5 10	8 48	11 01	24.7		
20	Thursday .....	294	6 21	5 08	9 41	11 48	24.5		
21	Friday .....	295	6 23	5 06	10 39	p.m. 31	26.1		
22	Saturday .....	296	6 24	5 05	11 38	1 06	28.4		
23	SUNDAY .....	297	6 25	5 04	a.m.	1 38	31.4		
24	Monday .....	298	6 26	5 02	0 36	2 06	34.9		
25	Tuesday .....	299	6 27	5 01	1 37	2 36	38.8		
26	Wednesday ...	300	6 28	5 00	2 32	3 00	42.8		
27	Thursday .....	301	6 30	4 58	3 32	3 27	46.9		
28	Friday .....	302	6 32	4 56	4 31	3 54	50.9		
29	Saturday .....	303	6 33	4 54	5 36	4 24	54.7		
30	SUNDAY .....	304	6 34	4 53	6 31	4 58	58.0		
31	Monday .....	305	6 35	4 52	7 32	5 37	60.7		

1864.
-------

1864.

## THE MECHANICS' AND LABOURERS' ALMANACK.

## THE MECHANICS' AND LABOURERS' ALMANACK.

☾ October, in the year of Romulus, was strictly what its name implies, the eighth month. With us it is the tenth; sign in the zodiac, Libra, the Balance.

nack.

Moon's Meri-  
dian Zenith  
Distances.

°  
52.3  
55.9  
59.0  
61.4  
63.9  
63.3  
62.6  
60.7  
57.7  
53.7  
49.0  
43.8  
38.6  
33.8  
.....  
29.7  
26.6  
24.7  
24.0  
24.5  
26.1  
28.4  
31.4  
34.9  
38.8  
42.8  
46.9  
50.9  
54.7  
58.0  
60.7

THE MECHANICS' AND LABOURERS' ALMANACK.

## The Mechanics' and Labourers' Almanack.

## NOVEMBER.

1864.

Day of Month.	Day of Week.	Day of Year.	TORONTO.				Moon's Meri- dian Zenith Distances.
			SUN.		MOON.		
			Rises.	Sets.	Rises.	Sets.	
			<i>h. m.</i>	<i>h. m.</i>	<i>h. m.</i>	<i>h. m.</i>	°
1	Tuesday .....	306	6 37	4 51	8 31	6 21	62.5
2	Wednesday ...	307	6 38	4 49	9 21	7 11	63.3
3	Thursday .....	308	6 40	4 48	10 21	8 08	62.9
4	Friday .....	309	6 41	4 47	11 11	9 11	61.4
5	Saturday .....	310	6 42	4 46	11 54	10 18	58.7
6	SUNDAY .....	311	6 44	4 44	p.m. 38	11 27	55.1
7	Monday .....	312	6 45	4 43	1 07	a. m.	50.8
8	Tuesday .....	313	6 46	4 42	1 41	0 37	45.9
9	Wednesday ...	314	6 47	4 41	2 14	1 49	40.9
10	Thursday .....	315	6 48	4 40	2 46	3 02	36.0
11	Friday .....	316	6 50	4 38	3 22	4 15	31.6
12	Saturday .....	317	6 51	4 37	4 02	5 27	28.0
13	SUNDAY .....	318	6 53	4 36	4 46	6 38	.....
14	Monday .....	319	6 54	4 36	5 34	7 45	25.5
15	Tuesday .....	320	6 55	4 35	6 28	8 45	24.2
16	Wednesday ...	321	6 57	4 33	7 26	9 39	24.1
17	Thursday .....	322	6 58	4 32	8 26	10 25	25.2
18	Friday .....	323	6 59	4 31	9 25	11 03	27.3
19	Saturday .....	324	7 01	4 31	10 26	11 38	30.1
20	SUNDAY .....	325	7 02	4 30	11 24	p m. 09	33.5
21	Monday .....	326	7 03	4 29	a. m.	0 30	37.2
22	Tuesday .....	327	7 04	4 28	0 21	1 03	41.2
23	Wednesday ...	328	7 06	4 28	1 20	1 29	45.3
24	Thursday .....	329	7 07	4 27	2 18	1 56	49.3
25	Friday .....	330	7 08	4 27	3 17	2 25	53.2
26	Saturday .....	331	7 09	4 27	4 18	2 57	56.7
27	SUNDAY .....	332	7 10	4 26	5 19	3 33	59.7
28	Monday .....	333	7 11	4 25	6 20	4 14	61.9
29	Tuesday .....	334	7 13	4 25	7 20	5 04	63.1
30	Wednesday ...	335	7 14	4 24	8 16	5 59	63.2

1864.

THE MECHANICS' AND LABOURERS' ALMANACK.

name im-  
the zodiac,

♏ This month, whose zodiacal sign is SCORPIO, the Scorpion, is, in common with some of the other months, indebted for its name to Romulus, with whom it was the ninth month—it is now the eleventh.

## The Mechanics' and Labourers' Almanack.

## DECEMBER.

1864.

THE MECHANICS' AND LABOURERS' ALMANACK.

Day of Month.	Day of Week.	Day of Year.	TORONTO.				Moons Meri- dian Zenith Distances.
			SUN.		MOON.		
			Rsies.	Sets.	Rises.	Sets.	
			<i>h. m.</i>	<i>h. m.</i>	<i>h. m.</i>	<i>h. m.</i>	
1	Thursday .....	336	7 15	4 24	9 07	7 02	62.1
2	Friday .....	337	7 16	4 24	9 54	8 09	59.7
3	Saturday .....	338	7 17	4 24	10 35	9 17	56.4
4	SUNDAY .....	339	7 18	4 24	11 10	10 28	52.2
5	Monday .....	340	7 19	4 23	11 44	11 38	47.6
6	Tuesday .....	341	7 20	4 23	p.m.16	a. m.	42.6
7	Wednesday ...	342	7 21	4 23	0 49	0 49	37.8
8	Thursday .....	343	7 22	4 23	1 22	2 01	33.3
9	Friday .....	344	7 23	4 23	1 58	3 12	29.5
10	Saturday .....	345	7 23	4 23	2 39	4 21	26.5
11	SUNDAY .....	346	7 24	4 23	3 23	5 28	24.6
12	Monday .....	347	7 25	4 24	4 14	6 30	24.0
13	Tuesday .....	348	7 26	4 24	5 10	7 27	.....
14	Wednesday ...	349	7 27	4 24	6 09	8 16	24.5
15	Thursday .....	350	7 27	4 24	7 10	8 59	26.1
16	Friday .....	351	7 28	4 25	8 10	9 36	28.6
17	Saturday .....	352	7 29	4 25	9 11	10 07	31.8
18	SUNDAY .....	353	7 30	4 25	10 08	10 39	35.4
19	Monday .....	354	7 30	4 25	11 06	11 04	39.3
20	Tuesday .....	355	7 31	4 26	a. m.	11 30	43.4
21	Wednesday ...	356	7 31	4 26	0 04	11 56	47.4
22	Thursday .....	357	7 32	4 26	1 05	p.m.24	51.4
23	Friday .....	358	7 32	4 27	2 02	0 55	55.1
24	Saturday .....	359	7 33	4 28	3 02	1 28	58.3
25	SUNDAY .....	360	7 33	4 29	4 03	2 07	60.9
26	Monday .....	361	7 33	4 29	5 05	2 53	62.7
27	Tuesday .....	362	7 33	4 30	6 04	3 46	63.3
28	Wednesday ...	363	7 34	4 31	6 59	4 47	62.7
29	Thursday .....	364	7 34	4 32	7 48	5 55	60.9
30	Friday .....	365	7 34	4 32	8 32	7 04	57.9
31	Saturday .....	365	7 34	4 33	9 11	8 16	53.9

1864.

† SAGITTARIUS, the Archer, is the zodiacal sign of this, the twelfth and last month of our year, and the tenth of the Romans.

THE MECHANICS' AND LABOURERS' ALMANACK.

THE

1. N  
a cont  
than p  
2. L  
the ye  
sions a  
3. In  
1826,   
had ris  
this ye  
1826, v  
a perio  
4. In  
additio  
may th  
have an  
5. T  
the pop  
which  
6. T  
1837, w  
us back  
7. T  
the cou  
Canada  
in the  
nately  
had no  
and the  
howeve  
hazard  
perous



## THE RISE, PROGRESS AND FUTURE OF THE CITY OF TORONTO.

1. No subject can be more interesting to the inhabitants of a city, than a contemplation of its rise and progress, its hopeful future, and more than probable prosperity.

2. Let us then take a glance at the rise and progress of Toronto, since the year 1817, and, judging from the past, draw some reasonable conclusions as to its probable future.

3. In the year 1817 the town contained about 1,200 inhabitants; in 1826, 1,677; in 1832 it had increased to about 4,000; and in 1842 it had risen to 15,336. In 1850 the population numbered 25,166; and in this year, 1864, it contains somewhere about 60,000 souls. So that from 1826, when we may be said to have taken a fair start, to this year 1864, a period of thirty-eight years, we have increased in population by 58,323.

4. In eight years of prosperity, then (1842 to 1850), we had made an addition to our population of somewhere about 10,000 souls; and we may therefore fairly conclude that within the next eight years we shall have arrived at a population of something like 75,000 people.

5. These thirty-eight years, however, have not passed away, nor has the population increased from 1,677 to 60,000, without several checks, which have for a longer or shorter period marred our prosperity.

6. Thus there was a great commercial crisis in the United States in 1837, which reached us also, and, being followed by the rebellion, threw us back for several years.

7. There was another crisis in 1847; but the worst struggle which the country has had to encounter, and which was most severely felt in Canada, and in Toronto in particular, was that of 1857. Commencing in the United States, it spread over the whole world, and still unfortunately remains with us, from a variety of circumstances, over which we had no control: for instance, the removal of the seat of government, and the war in the United States, which still continues. We are now, however, gradually recovering, and I do not think that it would be hazardous to express an opinion that the next five years will be prosperous and beneficial in every point of view.

8. Having thus given a slight table of the increase of population since the year 1826, let us take a view of the city, and, with the recollection of what a small village we were in 1826, let us contemplate the splendid buildings which adorn our streets—our banks, our shops, our warehouses, our cathedrals and our churches; let us look at the splendid residences which our citizens have erected, from the fruits of their own industry; and above all, let us not fail to remark the bustle and activity of our streets, and who can for a moment doubt that however much we may have suffered from the crisis of 1837, we have at length turned the corner, and are now surely and safely progressing towards wealth, independence and prosperity?

#### REAL ESTATE.

1. As a town, when first originated, rises slowly, and increases gradually, but with an increasing ratio, in wealth and population, so, naturally, do the prices of the lands and sites for buildings assume different proportions as we progress.

2. When the town of York was laid out, in 1793, by Governor Simcoe, the site was a perfect wilderness, and is thus described by Mr. Bouchette, the original surveyor: "I still distinctly recollect the untamed aspect "which the country exhibited when first I entered the beautiful basin "which thus became the scene of my early hydrographical operations. "Dense and trackless forests lined the margin of the lake, and reflected "their inverted images in its glassy surface. The wandering savage had "constructed his ephemeral habitation beneath their luxuriant foliage, "the group then consisting of two families—Messasagas; and the bay "and neighbouring marshes were the hitherto uninhabited haunts of "coveys of wildfowl: indeed they were so abundant as in some measure "to annoy us during the night. In the spring following, the Lieutenant-Governor removed to the site of the new capital, attended by the "regiment of Queen's Rangers, and commenced at once the realization "of his favourite project. His Excellency inhabited during the summer "and through the winter a canvas house, which he imported expressly "for the occasion; but, frail as was its substance, it was rendered "exceedingly comfortable, and soon became as distinguished for the "social and urbane hospitality of its venerated and gracious host, as for "the peculiarity of its structure."

3. The ground upon which the town is situated is nearly level, sloping gently up from the water's edge. The streets are laid out at right angles. The main avenues into the city are King, Yonge, Queen and Bathurst

streets  
assum

4. T  
was in  
built at

5. T  
immedi  
persons  
prices t  
may no

6. A  
curious  
vellous

7. T  
was pu  
Weston  
pay its  
this ver

8. T  
for £9

9. In  
dence o  
per acre

10. T  
advance

11. V

1. Ta  
increase  
to be st  
in land  
for the  
country  
ment fo

A Mr  
modera  
a point

streets; but in our day several streets are being built up, and are fast assuming the appearance of business streets.

4. The town, when first surveyed and laid out by Colonel Bouchette, was in a small compass, and the few houses which were erected were built at its eastern extremity.

5. Town lots, and grants of fifty and one hundred acres of land in the immediate vicinity of the town plot, were granted to old soldiers, and persons connected with the Government; others were sold at very low prices to actual settlers; and thus we behold the commencement of what may now be considered a populous city.

6. As time went on, lands increased a little in value; still it will be curious to mention one or two instances of what we now consider marvellously small prices, compared with the present day.

7. The corner of Yonge street, now occupied by Ridout, Bros. & Co., was purchased by Mr. Dennis, father of the present Mr. Dennis of Weston, for £50. It contained half-an-acre; and at this moment, to pay its value at a rental of £6 per foot per annum on one frontage alone, this very acre would be worth the enormous sum of £20,000.

8. The opposite corner, in the occupation of Betley & Kay, is leased for £9 per foot. The value is upwards of £30,000 for the corner acre.

9. In 1817, the six acres which form the square upon which the residence of the Bishop of Toronto stands, was purchased for £300—£50 per acre. Its present value may be estimated in thousands.

10. Thus we see how, by degrees, but steadily and safely, we have advanced, not only in population, but in material wealth and prosperity.

11. Who can tell what we shall be in 1874?

#### LAND VERSUS INSURANCE.

1. Taking the increase of population since 1826, and the greatly increased value of land for the same period as our basis, we cannot fail to be struck with the immense advantage which a judicious investment in land has over life insurance. In old countries, the insurance of life for the benefit of the family is certainly a wise precaution; but in a new country like this, where lands are always on the rise, the best investment for the survivors is a judicious purchase of lands.

#### CORNER LOTS.

A Mr. Yates, of New Orleans, a gentleman a few years ago of very moderate means, is now one of the richest men in that city. He made a point of attending all sales of real estate, and invariably bought the



corner lots, sometimes at pretty heavy prices. These lots he allowed to lie for a year. Many of them were, at the time of purchase, at a considerable distance from the business part of the city; but as the town grew, they came into play, and Mr. Yates is now a millionaire.

### THE CROOKSHANK ESTATE.

This magnificent Estate, comprising 325 acres of land, was purchased by the present proprietor in 1853, from the Hon. George Crookshank.

No time was lost in bringing it into the market. It was immediately divided into lots; roads were made, and bridges constructed, at a very considerable outlay; and it was sold by public auction to the highest bidder.

In the spring of 1857 it had all been disposed of; not one foot was left. The great commercial crisis of that year came upon us, and rendered it impossible for the greater number of the purchasers to fulfil their engagements, and the land has gradually reverted to the original purchaser. For seven long years we have been struggling against adversity, occasioned by over-trading and the utter prostration of business; and now at length that we are enabled to see a gleam of sunshine, a harbinger of a return to former prosperity, the proprietor offers these lands again for sale, and with a determination to sell so that tradesmen, mechanics and labourers may be enabled to purchase a homestead at such a price as will cause them no anxiety about the payment.

In fact I have determined to have no upset price. The land is to be sold, and the public must fix its value.

But what ought to be a fair value for these lands?

Let us for a moment suppose that no mechanic would object paying £50 for a lot of 66 feet by 135, on any part of the Estate. The price would certainly be a moderate one; and if he were enabled to erect a cottage, in accordance of a plan herewith submitted, and fence in the lot, for £40 more, his total expenditure would then amount to £90, which, calculating interest at 6 per cent., would stand him in \$21 60 per annum, a sum which the produce of his garden in one season would easily cover.

Is there any respectable mechanic, or even labourer, who cannot pay so small a sum as this for a comfortable home? Or does he prefer to live in a miserable hovel, for which he pays three or four dollars per month?

Now, supposing this to be the real value of a lot, or something approaching to it, and looking at the advantages which are offered by this Estate, in the shape of fine healthy air, good drainage, a good title,

and ex  
so man  
reason  
I ma  
and no  
the art  
a tenan

This  
mises f  
residen  
Gzows  
street;  
the ele  
nience

Arra  
gravell  
and wh  
that pa  
road, p  
will sh

The  
intersec  
great n  
first co  
than si  
begins  
Seaton  
purchas  
and che  
residen

There  
Davenp  
blocks  
with ex  
series, d

and excellent land for garden purposes, I simply ask where can you get so many things combined for your comfort in the whole city, at such a reasonable figure?

I maintain that I offer advantages which have never been equalled, and now is the time for the mechanic, the tradesman, the labourer and the artizan to obtain a freehold, and become a proprietor, and no longer a tenant.

#### BATHURST STREET.

This street, now macadamized and beautifully lighted with gas, promises fair to be very soon one of the most attractive streets for private residences in the city. Already we have the splendid residence of Mr. Gzowski, with its conservatories and greenhouses, as an ornament to this street; and the comfortable houses of Messrs. McDonald and Brown, and the elegant cottage of Colonel Muter, are remarkable for comfort, convenience and beauty.

Arrangements are being made with the Davenport Road Company for gravelling that portion of the street which runs north from Bloor street, and when this is completed there is no doubt that most of the traffic of that part of the country west of Yonge street will be directed along this road, particularly after the Western Market is erected, which no doubt will shortly be accomplished.

#### SEATON VILLAGE.

The village of Seaton is situated at the head of Bathurst street, on its intersection with Bloor street. It is laid out in lots of 53 x 125, and a great number of lots have been recently sold at reasonable rates. The first cottage of the village was erected in 1861, and there are now no less than sixteen houses and cottages, a chapel, and a factory, and the village begins to make something of a show. In the course of a few years Seaton will become a second Yorkville. The advantages offered to purchasers here are numerous. Fine soil, healthy air, good drainage and cheap taxes combine to make the village in every way desirable as a residence.

#### ACRE BLOCKS.

There are forty-two acres of land in rear of Seaton, running up to the Davenport Hill, which are also to be disposed of. They are laid out in blocks of 2½, 5 and 10 acres, being of a most fertile soil, well situated, with excellent drainage, and well calculated for market gardens, nurseries, &c.

There will be no upset price to these lands: they will be disposed of at such prices as may be offered. But it would be well to mention that at private sale the price has been £60 per acre, which is about one-third of the real value of the property.

#### TAXES.

The taxes on this property are much reduced, in consequence of the new Act; and considering the wealth of the city, and the property they possess, I have no doubt that within a very few years, by prudent management, the taxes in Toronto will be reduced to a very small figure. Any person who will take the trouble to walk along Esplanade street, will see how fast the city properties and others are being sold for lumber yards and factories; all of which will tend to reduce our taxation.

#### WESTERN MARKET.

In addition to the many advantages connected with the Crookshank Property which have been enumerated, there is no doubt that the Western Market will be erected in the course of the present year. This will enable all the inhabitants of the West End to purchase their provisions at their own doors, as it were, and save the trouble and annoyance of having to travel such a distance for a market as at present.

#### COTTON MILL.

The prospect of the contemplated Cotton Mill, to be erected on the site of the St. Andrew's Market, has been abandoned in consequence of the American war; but the day is not far distant when that and other manufactories will go on, to the great advantage of the western portion of the city.

#### TITLE.

The question of title is one of great consequence to purchasers, and the Crookshank Estate title has undergone the ordeal of a thorough examination by many interested parties. The title has also been the subject of litigation; and the best proof of its validity is the Certificate of Chancellor Blake, a copy of which is annexed to this pamphlet. Meanwhile the title deeds may be seen any day, on application to the proprietor.

CER

Part of

In Ch

In p  
been at  
good tit  
pleadin  
the bill  
could b  
defenda  
the inte  
As w  
dred an

IN THE

- 1.—Pat  
the  
dat
- 2.—Dec  
bet  
Da  
by  
not
- 3.—Dec  
Cro  
from  
28t



CERTIFICATE OF TITLE BY THE HON. MR. CHANCELLOR  
BLAKE.

*Part of Park Lots Nos. 18, 19 and 20, in the First Concession from the  
Bay, Township of York.*

*In Chancery.*

JAMES MCGILL STRACHAN and WILLIAM JOHN FITZGERALD,  
*Plaintiffs.*

— and —

*Defendants.*

In pursuance of the Decree made at the hearing of this cause, I have been attended by counsel for all parties; and I do hereby certify that a good title can be made to the premises comprised in the agreement in the pleadings mentioned. And I do further certify, that before the filing of the bill in this cause, it was shown to the defendants that a good title could be made to the said premises. And I do further certify, that the defendants ought not to be exempted from the payment of any portion of the interest upon the purchase money of the said premises.

As witness my hand this first day of March, one thousand eight hundred and fifty-eight.

(Signed) WILLIAM HUME BLAKE.

ABSTRACT OF TITLE OF LOTS 18, 19 & 20,

IN THE FIRST CONCESSION FROM THE BAY, TOWNSHIP OF YORK, NOW THE  
PROPERTY OF JAMES MCGILL STRACHAN.

Lot No. 18.

- 1.—Patent from the Crown to Edward Baker Littlehales, of No. 18 in the First Concession from the Bay, Township of York. Patent dated 10th August, 1801.
- 2.—Deed of Bargain and Sale. Edward Baker Littlehales and Elizabeth, his wife, to Catharine Hannah Alcock, of the whole Lot. Dated 14th day of March, 1816, executed in Dublin, and attested by Robert Shaw, Lord Mayor, and certified by Robert Bruce, notary public.
- 3.—Deed of Bargain and Sale. Catherine Hannah Alcock to George Crookshank, of the West half of Lot 18, in the First Concession from the Bay, 50 acres. Dated 28th January, 1817; registered 28th January, 1817; No. 2877.

## Lot No. 19.

- 1.—Patent from the Crown to Lieutenant-Colonel David Shank, of Lot No. 19, in the First Concession from the Bay, Township of York, 100 acres. Patent dated 31st December, 1798.
- 2.—Deed of Bargain and Sale. David Shank to Henry Alcock, of the whole Lot. Dated 1st May, 1799; registered 15th May, 1799; No. 54.
- 3.—Deed of Bargain and Sale. Catherine Hannah Alcock, spinster, Daughter and only surviving child of Honourable Henry Alcock, deceased, to George Crookshank, East Quarter of Lot No. 19, in the First Concession from the Bay, 25 acres. Dated 28th January, 1817; registered 28th January, 1817; No. 2877.
- 4.—Deed of Bargain and Sale, Catherine Hannah Alcock, spinster, daughter, &c., to Duncan Cameron, West Three-quarters of Lot No. 19, in the first concession from the Bay, 75 acres. Deed dated 24th April, 1817; registered 28th April, 1817; No. 2950.
- 5.—Deed of Bargain and Sale. Duncan Cameron to William Allan, the West Three-quarters of Lot No. 19, in the First Concession from the Bay, township of York, 75 acres. Dated 25th April, 1817; registered 25th April, 1817; No. 2951.
- 6.—Deed of Bargain and Sale. William Allan and Leah, his wife, to George Crookshank, the West Three-quarters of Lot No. 19, in the First Concession from the Bay, Township of York, 75 Acres. Dated 29th April, 1818; registered 29th April, 1818; No. 3134.

## Lot No. 20.

- 1.—Patent from the Crown to John McDonnell, of Lot No. 20 in the First Concession from the Bay, Township of York. Patent dated 26th November, 1810.
- 2.—Deed of Bargain and Sale. John McDonnell to James Givins, dated 6th December, 1810, of the whole Lot. Registered 6th December, 1810; Memorial No. 1560.
- 3.—Deed of Bargain and Sale. James Givins *et ux.* to George Crookshank, dated 20th January, 1819, of the whole Lot. Registered 2nd February, 1819; Memorial No. 3318.

Deed of Bargain and Sale. George Crookshank to J. M. Strachan and W. J. Fitzgerald, so much of Lots 18, 19, and 20 as had not been previously disposed of by him, containing 225 acres, be the same more or less. Deed dated 7th April, 1853; registered same day; Memorial No. 48,725.

Assign

sa

1.—De

tr

2.—Ge

Da

3.—Wi

an

4.—Ge

De

da

5.—Wi

ma

6.—Wi

In

Assignment. W. J. Fitzgerald to J. M. Strachan. Of all his interest in said Lands. Memorial No. (City) 1503; (County) 84,631.

# ABSTRACT OF TITLE OF LOT 26,

2ND CONCESSION FROM THE BAY, IN THE TOWNSHIP OF YORK.

## No. 26, 2ND COOCESSION.

- 1.—Deed of Bargain and Sale. Cecilia Shank to George Crookshank (in trust). Dated 16th March, 1839. Memorial No. 17,048.
- 2.—George Crookshank to William Cooper. Deed of Bargain and Sale. Dated 26th August, 1848. Memorial No. 33,382.
- 3.—William Cooper and Wife, to George Crookshank. Deed of Bargain and Sale. Dated 29th November, 1848. Memorial No. 33,383.
- 4.—George Crookshank to James M. Strachan and Wm. J. Fitzgerald. Deed of Bargain and Sale. Dated 7th April, 1853. Registered same day. Memorial No. 48,725.
- 5.—William Cooper to the Hon. George Crookshank. Deed of Confirmation. Dated 29th September, 1855. Memorial No. 60,838.
- 6.—William J. Fitzgerald to James M. Strachan. Assignment of the Interest in said Lands. Dated 7th March, 1860. Mem. No. 84,631.

Shank, of Lot  
ship of York,

Alcock, of the  
May, 1799;

ock, spinster,  
Henry Alcock,  
ot No. 19, in  
28th January,

ock, spinster,  
arters of Lot  
Deed dated  
950.

iam Allan, the  
ssion from the  
, 1817; regis-

h, his wife, to  
No. 19, in the  
rk, 75 Acres.  
; No. 3184.

No. 20 in the  
Patent dated

James Givins,  
Registered 6th

George Crook-  
st. Registered

J. M. Strachan  
s had not been  
the same more  
day; Memorial



## GREAT AUCTION SALE OF REAL ESTATE.

### THE CROOKSHANK ESTATE.

The proprietor has determined to dispose of the residue of this magnificent Property by Public Auction, on SATURDAY, the 14th MAY next, at 12 o'clock noon, on the ground.

The public are invited to attend.

The Street Railway runs to the corner of Bathurst street, within one minute's walk of the spot selected for the Sale.

### TERMS.

The Land will be disposed of to the highest bidder.

No upset price will be fixed.

The terms will be, One-Fifth down, and the balance in four equal annual instalments, with Interest at 6 per cent., payable 1st day of March in each year, and Interest half-yearly on the sum remaining due on the first days of the months of March and September in every year.

### DEED AND MORTGAGE.

Three dollars only will be charged for conveyancing, which charge will include registration.

JAMES M. STRACHAN.

CR

ROBI

"

"

"

"

"

BATH

"

"

"

"

"

"

"

"

"

"

"

"

"

"

"

"

"

"

"

"

"

"

"

"

"

"

"

"

"

"

"

# LOTS FOR SALE

ON THE

## CROOKSHANK ESTATE,

BY AUCTION,

ON SATURDAY, THE 14TH MAY, 1864.

---

ROBINSON St., s. s.,	East half Lot No. 2	67 ft. front.
" " "	West " No. 2	67 "
" " "	East " No. 7	67 "
" " "	West " No. 7	67 "
" " "	East " No. 8	67 "
" " "	West " No. 8	67 "
BATHURST St., w. s.,	North " No. 49	62 "
" " "	South " No. 49	62 "
" " "	North " No. 64	62 "
" " "	South " No. 64	62 "
" " "	North " No. 65	62 "
" " "	South " No. 65	62 "
" " "	North " No. 80	62 "
" " "	South " No. 80	62 "
" " "	North " No. 81	62 "
" " "	South " No. 81	62 "
MARKHAM, St., e. s.,	North " No. 47	62 "
" " "	South " No. 47	62 "
" " "	North " No. 50	62 "
" " "	South " No. 50	62 "
" " "	North " No. 63	62 "
" " "	South " No. 63	62 "
" " "	North " No. 66	62 "
" " "	South " No. 66	62 "

MARKHAM...	St., e. s.,	North half Lot	No. 79 .....	62 ft. front.
"	"	South	" No. 79 .....	62 "
"	"	North	" No. 82 .....	62 "
"	"	South	" No. 82 .....	62 "
"	" w. s.,	North	" No. 35 .....	62 "
"	"	South	" No. 35 .....	62 "
ONTARIO ...	St., e. s.,	North	" No. 36 .....	62 "
"	"	South	" No. 36 .....	62 "
"	"	North	" No. 45 .....	62 "
"	"	South	" No. 45 .....	62 "
LUMLEY .....	St., w. s.,	North	" No. 23 .....	62 "
"	"	South	" No. 23 .....	62 "
"	"	North	" No. 26 .....	62 "
"	"	South	" No. 26 .....	62 "
"	"	North	" No. 39 .....	62 "
"	"	South	" No. 39 .....	62 "
"	"	Southerly part	No. 42 .....	95 "
"	"	North half Lot	No. 55 .....	62 "
"	"	South	" No. 55 .....	62 "
"	"	South	" No. 58 .....	62 "
"	"	North	" No. 58 .....	62 "
HOPE .....	St., e. s.,	North	" No. 24 .....	62 "
"	"	South	" No. 24 .....	62 "
"	"	North	" No. 25 .....	62 "
"	"	South	" No. 25 .....	62 "
"	"	North	" No. 40 .....	62 "
"	"	South	" No. 40 .....	62 "
"	"	Southerly part	No. 41 .....	30 "
"	"	Northerly part	No. 41 .....	35 "
"	"	North half Lot	No. 56 .....	62 "
"	"	South	" No. 56 .....	62 "
"	"	North	" No. 57 .....	62 "
"	"	South	" No. 57 .....	62 "
LIPPINCOTT	St., w. s.,	North	" No. 168 .....	62 "
"	"	South	" No. 168 .....	62 "
"	"	North	" No. 169 .....	62 "
"	"	South	" No. 169 .....	62 "
"	"	North	" No. 188 .....	62 "
"	"	South	" No. 188 .....	62 "
BATHURST	St., e. s.,	North	" No. 167 .....	62 "
"	"	South	" No. 167 .....	62 "
"	"	Southerly p't	No. 170 .....	30 "
"	" e. s.,	Northerly part	No. 170 .....	65 "
"	"	North half Lot	No. 187 .....	62 "
"	"	South	" No. 187 .....	62 "

BATHU

"

"

"

"

"

"

"

"

"

"

"

"

"

"

"

"

MARK

"

"

"

"

"

"

"

"

"

"

"

"

"

"

"

"

"

"

"

"

"

"

"

"

"

"



62 ft. front.

62	"	BATHURST St., w. s.,	North half Lot	No. 96	.....	62 ft. front.
62	"	"	South	"	No. 96	..... 62 "
62	"	"	North	"	No. 97	..... 62 "
62	"	"	South	"	No. 97	..... 62 "
62	"	"	North	"	No. 112	..... 62 "
62	"	"	South	"	No. 112	..... 62 "
62	"	"	Southerly part	No. 113	.....	58 "
62	"	"	Northerly part	No. 146	.....	117 "
62	"	"	North half Lot	No. 151	.....	62 "
62	"	"	South	"	No. 151	..... 62 "
62	"	"	North	"	No. 166	..... 62 "
62	"	"	South	"	No. 166	..... 62 "
62	"	"	North	"	No. 171	..... 62 "
62	"	"	South	"	No. 171	..... 62 "
62	"	"	North	"	No. 186	..... 62 "
62	"	"	South	"	No. 186	..... 62 "
95	"	"	North	"	No. 191	..... 62 "
62	"	"	South	"	No. 191	..... 62 "
62	"	MARKHAM St., e. s.,	North	"	No. 95	..... 62 "
62	"	"	South	"	No. 95	..... 62 "
62	"	"	North	"	No. 98	..... 62 "
62	"	"	South	"	No. 98	..... 62 "
62	"	"	North	"	No. 111	..... 62 "
62	"	"	South	"	No. 111	..... 62 "
62	"	"	Southerly part	No. 114	.....	58 "
62	"	"	Northerly part	No. 145	.....	117 "
62	"	"	North half Lot	No. 152	.....	62 "
30	"	"	South	"	No. 152	..... 62 "
35	"	"	North	"	No. 165	..... 62 "
62	"	"	South	"	No. 165	..... 62 "
62	"	"	North	"	No. 172	..... 62 "
62	"	"	South	"	No. 172	..... 62 "
62	"	"	North	"	No. 185	..... 62 "
62	"	"	South	"	No. 185	..... 62 "
62	"	"	North	"	No. 192	..... 62 "
62	"	"	South	"	No. 192	..... 62 "
62	"	" w. s.,	North	"	No. 94	..... 62 "
62	"	"	South	"	No. 94	..... 62 "
62	"	"	North	"	No. 99	..... 62 "
62	"	"	South	"	No. 99	..... 62 "
62	"	"	North	"	No. 115	..... 62 "
30	"	"	South	"	No. 115	..... 62 "
65	"	"	North	"	No. 126	..... 62 "
62	"	"	South	"	No. 126	..... 62 "
62	"	"	North	"	No. 133	..... 62 "

MARKHAM St., w.s.,	South half Lot	No. 133 .....	62 ft. front.
"	North "	No. 144 .....	62 "
"	South "	No. 144 .....	62 "
"	North "	No. 153 .....	62 "
"	South "	No. 153 .....	62 "
"	North "	No. 164 .....	62 "
"	South "	No. 164 .....	62 "
"	Southerly part	No. 173 .....	25 "
"	Northerly part	No. 173 .....	25 "
"	North half Lot	No. 184 .....	62 "
"	South "	No. 184 .....	62 "
"	North "	No. 193 .....	62 "
"	South "	No. 193 .....	62 "
ONTARIO ... St., e.s.,	North "	No. 93 .....	62 "
"	South "	No. 93 .....	62 "
"	North "	No. 100 .....	62 "
"	South "	No. 100 .....	62 "
"	Northerly part	No. 116 .....	65 "
"	North half Lot	No. 125 .....	62 "
"	South "	No. 125 .....	62 "
"	North "	No. 134 .....	62 "
"	South "	No. 134 .....	62 "
"	North "	No. 143 .....	62 "
"	South "	No. 143 .....	62 "
"	North "	No. 154 .....	62 "
"	South "	No. 154 .....	62 "
"	North "	No. 163 .....	62 "
"	South "	No. 163 .....	62 "
"	North "	No. 174 .....	62 "
"	South "	No. 174 .....	62 "
"	North "	No. 183 .....	62 "
"	South "	No. 183 .....	62 "
"	North "	No. 194 .....	62 "
"	South "	No. 194 .....	62 "
LUMLEY.....St., w.s.,	..... Lot	No. 9 .....	42 "
"	..... "	No. 16 .....	40 "
"	..... "	No. 24 .....	40 "
"	..... "	No. 25 .....	40 "
"	..... "	No. 28 .....	40 "
"	..... "	No. 32 .....	40 "
"	..... "	No. 36 .....	40 "
"	..... "	No. 40 .....	40 "
"	..... "	No. 44 .....	40 "
"	..... "	No. 45 .....	40 "
"	..... "	No. 48 .....	40 "

LUMI

"

"

"

"

"

HOPE

"

"

"

"

"

"

"

"

"

"

"

"

"

"

"

"

"

"

"

"

"

"

COLLE

"

"

"

"

"

"

"

"

"

"

"

62 ft. front.

62	"	LUMLEY.....St., w.s.,	.....	Lot No. 52	.....	40 ft. front.
62	"	"	"	" No. 53	.....	40 "
62	"	"	"	" No. 56	.....	40 "
62	"	"	"	" No. 57	.....	40 "
62	"	"	"	North half Lot No. 197	.....	62 "
62	"	"	"	South " No. 197	.....	62 "
62	"	HOPE .....	St., e.s.,	.....	Lot No. 2	..... 52 "
25	"	"	"	" No. 6	.....	52 "
25	"	"	"	" No. 7	.....	52 "
62	"	"	"	" No. 10	.....	52 "
62	"	"	"	" No. 14	.....	40 "
62	"	"	"	" No. 15	.....	40 "
62	"	"	"	" No. 18	.....	40 "
62	"	"	"	" No. 19	.....	40 "
62	"	"	"	" No. 22	.....	40 "
62	"	"	"	" No. 31	.....	40 "
62	"	"	"	" No. 34	.....	40 "
65	"	"	"	" No. 35	.....	40 "
62	"	"	"	" No. 38	.....	40 "
62	"	"	"	" No. 39	.....	40 "
62	"	"	"	" No. 42	.....	40 "
62	"	"	"	" No. 43	.....	40 "
62	"	"	"	" No. 46	.....	40 "
62	"	"	"	" No. 47	.....	40 "
62	"	"	"	" No. 50	.....	40 "
62	"	"	"	" No. 51	.....	40 "
62	"	"	"	" No. 54	.....	40 "
62	"	"	"	" No. 55	.....	40 "
62	"	"	"	" No. 58	.....	40 "
62	"	"	"	North half Lot No. 198	.....	62 "
62	"	"	"	South " No. 198	.....	62 "
62	"	COLLEGE ...	St., n.s.,	Westerly part No. 208	.....	55 "
62	"	"	"	Westerly part No. 207	.....	105 "
62	"	"	"	East " No. 205	.....	67 "
42	"	"	"	West " No. 205	.....	67 "
40	"	"	"	East " No. 204	.....	67 "
40	"	"	"	West " No. 204	.....	67 "
40	"	"	"	East " No. 203	.....	67 "
40	"	"	"	West " No. 203	.....	67 "
40	"	"	"	East " No. 202	.....	67 "
40	"	"	"	West " No. 202	.....	67 "
40	"	"	"	East " No. 201	.....	67 "
40	"	"	"	West " No. 201	.....	67 "
40	"	"	"	East " No. 200	.....	67 "
40	"	"	"	West " No. 200	.....	67 "



COLLEGE ... St., n. s.,	East half Lot	No. 199 .....	67 ft. front.
" " "	West " .....	No. 199 .....	67 "
LIPPINCOTT St., w. s.,	North " .....	No. 209 .....	66 "
" " "	South " .....	No. 209 .....	66 "
" " "	North " .....	No. 228 .....	66 "
" " "	South " .....	No. 228 .....	66 "
" " "	North " .....	No. 229 .....	66 "
" " "	South " .....	No. 229 .....	66 "
" " "	North " .....	No. 248 .....	66 "
" " "	South " .....	No. 248 .....	66 "
" " "	North " .....	No. 249 .....	66 "
" " "	South " .....	No. 249 .....	66 "
" " "	North " .....	No. 268 .....	66 "
" " "	South " .....	No. 268 .....	66 "
" " "	North " .....	No. 269 .....	66 "
" " "	South " .....	No. 269 .....	66 "
" " "	North " .....	No. 288 .....	66 "
" " "	South " .....	No. 288 .....	66 "
BATHURST St., e. s.,	North " .....	No. 210 .....	66 "
" " "	South " .....	No. 210 .....	66 "
" " "	North " .....	No. 227 .....	66 "
" " "	South " .....	No. 227 .....	66 "
" " "	North " .....	No. 230 .....	66 "
" " "	South " .....	No. 230 .....	66 "
" " "	North " .....	No. 247 .....	66 "
" " "	South " .....	No. 247 .....	66 "
" " "	North " .....	No. 250 .....	66 "
" " "	South " .....	No. 250 .....	66 "
" " "	North " .....	No. 267 .....	66 "
" " "	South " .....	No. 267 .....	66 "
" " "	e. s., North " .....	No. 270 .....	66 "
" " "	South " .....	No. 270 .....	66 "
" " "	North " .....	No. 287 .....	66 "
" " "	South " .....	No. 287 .....	66 "
" " "	w. s., North " .....	No. 211 .....	66 "
" " "	South " .....	No. 211 .....	66 "
" " "	North " .....	No. 226 .....	66 "
" " "	South " .....	No. 226 .....	66 "
" " "	North " .....	No. 231 .....	66 "
" " "	South " .....	No. 231 .....	66 "
" " "	North " .....	No. 246 .....	66 "
" " "	South " .....	No. 246 .....	66 "
" " "	North " .....	No. 251 .....	66 "
" " "	South " .....	No. 251 .....	66 "
" " "	North " .....	No. 266 .....	66 "

BATH

"

"

"

MARK

"

"

"

"

"

"

"

"

"

"

"

"

"

"

"

"

"

"

"

"

"

"

"

"

"

"

"

"

"

ONTAR

"

"

"

"

"

"

67 ft. front.	BATHURST St., w. s., South half Lot	No. 266 .....	66 ft. front.
67 "	" " " North	" No. 271 .....	66 "
66 "	" " " South	" No. 271 .....	66 "
66 "	" " " North	" No. 286 .....	66 "
66 "	" " " South	" No. 286 .....	66 "
66 "	MARKHAM St., e. s., North	" No. 212 .....	66 "
66 "	" " " South	" No. 212 .....	66 "
66 "	" " " North	" No. 225 .....	66 "
66 "	" " " South	" No. 225 .....	66 "
66 "	" " " North	" No. 232 .....	66 "
66 "	" " " South	" No. 232 .....	66 "
66 "	" " " North	" No. 245 .....	66 "
66 "	" " " South	" No. 245 .....	66 "
66 "	" " " North	" No. 252 .....	66 "
66 "	" " " South	" No. 252 .....	66 "
66 "	" " " North	" No. 265 .....	66 "
66 "	" " " South	" No. 265 .....	66 "
66 "	" " " North	" No. 272 .....	66 "
66 "	" " " South	" No. 272 .....	66 "
66 "	" " " North	" No. 285 .....	66 "
66 "	" " " South	" No. 285 .....	66 "
66 "	" " " w. s., North	" No. 213 .....	66 "
66 "	" " " South	" No. 213 .....	66 "
66 "	" " " North	" No. 224 .....	66 "
66 "	" " " South	" No. 224 .....	66 "
66 "	" " " North	" No. 233 .....	66 "
66 "	" " " South	" No. 233 .....	66 "
66 "	" " " North	" No. 244 .....	66 "
66 "	" " " South	" No. 244 .....	66 "
66 "	" " " North	" No. 253 .....	66 "
66 "	" " " South	" No. 253 .....	66 "
66 "	" " " North	" No. 264 .....	66 "
66 "	" " " South	" No. 264 .....	66 "
66 "	" " " North	" No. 273 .....	66 "
66 "	" " " South	" No. 273 .....	66 "
66 "	" " " North	" No. 284 .....	66 "
66 "	" " " South	" No. 284 .....	66 "
66 "	ONTARIO ... St., e. s., North	" No. 214 .....	66 "
66 "	" " " South	" No. 214 .....	66 "
66 "	" " " North	" No. 223 .....	66 "
66 "	" " " South	" No. 223 .....	66 "
66 "	" " " North	" No. 234 .....	66 "
66 "	" " " South	" No. 234 .....	66 "
66 "	" " " North	" No. 243 .....	66 "
66 "	" " " South	" No. 243 .....	66 "

ONTARIO ...	St., e. s.,	North half Lot	No. 254 .....	66 ft. front.
"	"	South	" No. 254 .....	66 "
"	"	North	" No. 263 .....	66 "
"	"	South	" No. 263 .....	66 "
"	"	North	" No. 274 .....	66 "
"	"	South	" No. 274 .....	66 "
"	"	North	" No. 283 .....	66 "
"	"	South	" No. 283 .....	66 "
"	"	W. s., North	" No. 215 .....	66 "
"	"	South	" No. 215 .....	66 "
"	"	North	" No. 222 .....	66 "
"	"	South	" No. 222 .....	66 "
"	"	North	" No. 235 .....	66 "
"	"	South	" No. 235 .....	66 "
"	"	North	" No. 242 .....	66 "
"	"	South	" No. 242 .....	66 "
"	"	North	" No. 255 .....	66 "
"	"	South	" No. 255 .....	66 "
"	"	North	" No. 262 .....	66 "
"	"	South	" No. 262 .....	66 "
"	"	North	" No. 275 .....	66 "
"	"	South	" No. 275 .....	66 "
"	"	North	" No. 282 .....	66 "
"	"	South	" No. 282 .....	66 "
LUMLEY.....	St., e. s.,	North	" No. 216 .....	66 "
"	"	South	" No. 216 .....	66 "
"	"	North	" No. 221 .....	66 "
"	"	South	" No. 221 .....	66 "
"	"	North	" No. 336 .....	66 "
"	"	South	" No. 336 .....	66 "
"	"	North	" No. 241 .....	66 "
"	"	South	" No. 241 .....	66 "
"	"	North	" No. 256 .....	66 "
"	"	South	" No. 256 .....	66 "
"	"	North	" No. 261 .....	66 "
"	"	South	" No. 261 .....	66 "
"	"	North	" No. 276 .....	66 "
"	"	South	" No. 276 .....	66 "
"	"	North	" No. 281 .....	66 "
"	"	South	" No. 281 .....	66 "
"	"	W. s., North	" No. 217 .....	66 "
"	"	South	" No. 217 .....	66 "
"	"	North	" No. 220 .....	66 "
"	"	South	" No. 220 .....	66 "
"	"	North	" No. 237 .....	66 "

LUMI

HOP

LIPPI

BATH



66 ft. front.	LUMLEY .... St., e. s.,	South half Lot	No. 237 . . . .	66 ft. front.
66 "	" "	North "	No. 240 . . . .	66 "
66 "	" "	South "	No. 240 . . . .	66 "
66 "	" "	North "	No. 257 . . . .	66 "
66 "	" "	South "	No. 257 . . . .	66 "
66 "	" "	North "	No. 260 . . . .	66 "
66 "	" "	South "	No. 260 . . . .	66 "
66 "	" "	North "	No. 277 . . . .	66 "
66 "	" "	South "	No. 277 . . . .	66 "
66 "	" "	North "	No. 280 . . . .	66 "
66 "	" "	South "	No. 280 . . . .	66 "
66 "	HOPE ..... St., e. s.,	North "	No. 218 . . . .	66 "
66 "	" "	South "	No. 218 . . . .	66 "
66 "	" "	North "	No. 219 . . . .	66 "
66 "	" "	South "	No. 219 . . . .	66 "
66 "	" "	North "	No. 238 . . . .	66 "
66 "	" "	South "	No. 238 . . . .	66 "
66 "	" "	North "	No. 239 . . . .	66 "
66 "	" "	South "	No. 239 . . . .	66 "
66 "	" "	North "	No. 258 . . . .	66 "
66 "	" "	South "	No. 258 . . . .	66 "
66 "	" "	North half Lot	No. 259 . . . .	66 "
66 "	" "	South "	No. 259 . . . .	66 "
66 "	" "	North "	No. 278 . . . .	66 "
66 "	" "	South "	No. 278 . . . .	66 "
66 "	" "	North "	No. 279 . . . .	66 "
66 "	" "	South "	No. 279 . . . .	66 "
66 "	LIPPINCOTT St., w. s.,	North half Lot	No. 289 . . . .	72 "
66 "	" "	South "	No. 289 . . . .	72 "
66 "	" "	North "	No. 308 . . . .	72 "
66 "	" "	South "	No. 308 . . . .	72 "
66 "	" "	North "	No. 309 . . . .	72 "
66 "	" "	South "	No. 309 . . . .	72 "
66 "	" "	North "	No. 328 . . . .	72 "
66 "	" "	South "	No. 328 . . . .	72 "
66 "	BATHURST St., e. s.,	North "	No. 290 . . . .	72 "
66 "	" "	South "	No. 290 . . . .	72 "
66 "	" "	North "	No. 307 . . . .	72 "
66 "	" "	South "	No. 307 . . . .	72 "
66 "	" "	North "	No. 310 . . . .	72 "
66 "	" "	South "	No. 310 . . . .	72 "
66 "	" "	Southerly part	No. 327 . . . .	50 "
66 "	" "	Northerly part	No. 291 . . . .	20 "
66 "	" "	North "	No. 306 . . . .	72 "
66 "	" "	South "	No. 306 . . . .	72 "

BATHURST	St., w. s.,	Northerly part	No. 311 .....	72 ft. front.
"	"	South	" No. 311 .....	72 "
"	"	North	" No. 326 .....	72 "
"	"	South	" No. 326 .....	72 "
MARKHAM	St., e. s.,	Northerly part	No. 292 .....	20 "
"	"	North	" No. 305 .....	72 "
"	"	South	" No. 305 .....	72 "
"	"	North	" No. 312 .....	72 "
"	"	South	" No. 312 .....	72 "
"	"	North	" No. 325 .....	72 "
"	"	South	" No. 325 .....	72 "
"	"	w. s., North	" No. 293 .....	72 "
"	"	South	" No. 293 .....	72 "
"	"	North	" No. 304 .....	72 "
"	"	South	" No. 304 .....	72 "
"	"	North	" No. 313 .....	72 "
"	"	South	" No. 313 .....	72 "
"	"	North	" No. 324 .....	72 "
MARKHAM	St., w. s.,	South half Lot	No. 324 .....	72 "
ONTARIO ...	St., e. s.,	North	" No. 294 .....	72 "
"	"	South	" No. 294 .....	72 "
"	"	North	" No. 303 .....	72 "
"	"	South	" No. 303 .....	72 "
"	"	North	" No. 314 .....	72 "
"	"	South	" No. 314 .....	72 "
"	"	North	" No. 323 .....	72 "
"	"	South	" No. 323 .....	72 "
"	"	w. s., North	" No. 295 .....	72 "
"	"	South	" No. 295 .....	72 "
"	"	North	" No. 302 .....	72 "
"	"	South	" No. 302 .....	72 "
"	"	North	" No. 315 .....	72 "
"	"	South	" No. 315 .....	72 "
"	"	North	" No. 322 .....	72 "
"	"	South	" No. 322 .....	72 "
LUMLEY ...	St., e. s.,	North	" No. 296 .....	72 "
"	"	South	" No. 296 .....	72 "
"	"	North	" No. 301 .....	72 "
"	"	South	" No. 301 .....	72 "
"	"	North	" No. 316 .....	72 "
"	"	South	" No. 316 .....	72 "
"	"	North	" No. 321 .....	72 "
"	"	South	" No. 321 .....	72 "
"	"	w. s., North	" No. 297 .....	72 "
"	"	South	" No. 297 .....	72 "

LUMLEY

"

"

"

"

"

HOPE

"

"

"

"

"

"

"

LIPPIN

"

"

"

"

"

"

"

"

"

"

"

"

"

"

"

"

"

BATHU

"

"

"

"

"

"

"

"

"

"

"

"

C

72 ft. front.	LUMLEY ... St., e. s.,	North half Lot	No. 300 .....	72 ft. front.
72 "	" "	South "	No. 300 .....	72 "
72 "	" "	North "	No. 317 .....	72 "
72 "	" "	South "	No. 317 .....	72 "
20 "	" "	North "	No. 320 .....	72 "
72 "	" "	South "	No. 320 .....	72 "
72 "	HOPE ..... St., e. s.,	North "	No. 298 .....	72 "
72 "	" "	South "	No. 298 .....	72 "
72 "	" "	North "	No. 299 .....	72 "
72 "	" "	South "	No. 299 .....	72 "
72 "	" "	North "	No. 318 .....	72 "
72 "	" "	South "	No. 318 .....	72 "
72 "	" "	North "	No. 319 .....	72 "
72 "	" "	South "	No. 319 .....	72 "
72 "	LIPPINCOTT St., w. s.,	..... Lot	No. 1 .....	53 "
72 "	" "	..... "	No. 2 .....	53 "
72 "	" "	..... "	No. 3 .....	53 "
72 "	" "	..... "	No. 4 .....	53 "
72 "	" "	..... "	No. 5 .....	53 "
72 "	" "	..... "	No. 6 .....	53 "
72 "	" "	..... "	No. 7 .....	53 "
72 "	" "	..... "	No. 8 .....	53 "
72 "	" "	..... "	No. 9 .....	53 "
72 "	" "	..... "	No. 10 .....	53 "
72 "	" "	..... "	No. 11 .....	53 "
72 "	" "	..... "	No. 12 .....	53 "
72 "	" "	..... "	No. 13 .....	53 "
72 "	" "	..... "	No. 14 .....	53 "
72 "	" "	..... "	No. 15 .....	53 "
72 "	" "	..... "	No. 16 .....	53 "
72 "	" "	..... "	No. 17 .....	53 "
72 "	" "	..... "	No. 18 .....	53 "
72 "	" "	..... "	No. 19 .....	53 "
72 "	BATHURST St., e. s.,	..... "	No. 36 .....	53 "
72 "	" "	North half	No. 35 .....	26 "
72 "	" "	..... "	No. 30 .....	53 "
72 "	" "	..... "	No. 31 .....	53 "
72 "	" "	..... "	No. 28 } .....	50 "
72 "	" h. p. of	..... "	No. 29 }	
72 "	" w. s.,	..... "	No. 51 .....	53 "
72 "	" "	..... "	No. 62 .....	53 "
72 "	" "	..... "	No. 63 .....	53 "
72 "	" "	..... "	No. 53 .....	53 "
72 "	" "	..... "	No. 54 .....	53 "
72 "	" "	..... "	No. 55 .....	53 "
72 "	" "	..... "	No. 56 .....	53 "



BATHURST	St., w. s.,	.....	Lot	No. 57	.....	53 ft. front.
MARKHAM	St., e. s.,	.....	"	No. 86	.....	53 "
"	"	.....	"	No. 85	.....	53 "
"	"	.....	"	No. 84	.....	53 "
"	"	.....	"	No. 83	.....	53 "
"	"	.....	"	No. 82	.....	53 "
"	"	.....	"	No. 81	.....	53 "
"	"	.....	"	No. 80	.....	53 "
"	"	.....	"	No. 79	.....	53 "
"	"	.....	"	No. 78	.....	53 "
"	"	.....	"	No. 77	.....	53 "
"	"	.....	"	No. 76	.....	53 "
"	"	.....	"	No. 75	.....	53 "
"	"	.....	"	No. 74	.....	53 "
"	"	.....	"	No. 73	.....	53 "
"	"	.....	"	No. 72	.....	53 "
"	"	.....	"	No. 71	.....	53 "
"	"	.....	"	No. 70	.....	53 "
"	"	.....	"	No. 69	.....	53 "
"	"	.....	"	No. 68	.....	53 "
"	"	W. s.,	"	No. 88	.....	53 "
"	"	.....	"	No. 89	.....	53 "
"	"	.....	"	No. 90	.....	53 "
"	"	.....	"	No. 91	.....	53 "
"	"	.....	"	No. 92	.....	53 "
"	"	.....	"	No. 93	.....	53 "
"	"	.....	"	No. 94	.....	53 "
"	"	.....	"	No. 95	.....	53 "
"	"	.....	"	No. 96	.....	53 "
MARKHAM	St., w. s.,	.....	Lot	No. 97	.....	53 "
"	"	.....	"	No. 98	.....	53 "
"	"	.....	"	No. 99	.....	53 "
"	"	.....	"	No. 100	.....	53 "
"	"	.....	"	No. 101	.....	53 "
"	"	.....	"	No. 102	.....	53 "
"	"	.....	"	No. 103	.....	53 "
"	"	.....	"	No. 104	.....	53 "
"	"	.....	"	No. 105	.....	53 "
ONTARIO ...	St., e. s.,	.....	"	No. 129	.....	53 "
"	"	.....	"	No. 128	.....	53 "
"	"	.....	"	No. 127	.....	53 "
"	"	.....	"	No. 126	.....	53 "
"	"	.....	"	No. 125	.....	53 "
"	"	.....	"	No. 124	.....	53 "
"	"	.....	"	No. 123	.....	53 "

ONT

LUM

53 ft. front.

53	"	ONTARIO .. St., e. s.,	..... Lot No. 122	..... 53 ft. front.
53	"	"	" No. 121	53 "
53	"	"	" No. 120	53 "
53	"	"	" No. 119	53 "
53	"	"	" No. 118	53 "
53	"	"	" No. 117	53 "
53	"	"	" No. 116	53 "
53	"	"	" No. 115	53 "
53	"	"	" No. 114	53 "
53	"	"	" No. 113	53 "
53	"	"	" No. 112	53 "
53	"	"	" No. 111	53 "
53	"	" W. S.,	" No. 130	53 "
53	"	"	" No. 131	53 "
53	"	"	" No. 132	53 "
53	"	"	" No. 133	53 "
53	"	"	" No. 134	53 "
53	"	"	" No. 135	53 "
53	"	"	" No. 136	53 "
53	"	"	" No. 137	53 "
53	"	"	" No. 138	53 "
53	"	"	" No. 139	53 "
53	"	"	" No. 140	53 "
53	"	"	" No. 141	53 "
53	"	"	" No. 142	53 "
53	"	"	" No. 144	53 "
53	"	"	" No. 145	53 "
53	"	"	" No. 146	53 "
53	"	"	" No. 147	53 "
53	"	"	" No. 148	53 "
53	"	LUMLEY.....St., e. s.,	" No. 172	53 "
53	"	"	" No. 171	53 "
53	"	"	" No. 170	53 "
53	"	"	" No. 169	53 "
53	"	"	" No. 168	53 "
53	"	"	" No. 167	53 "
53	"	"	" No. 166	53 "
53	"	"	" No. 165	53 "
53	"	"	" No. 164	53 "
53	"	"	" No. 163	53 "
53	"	"	" No. 162	53 "
53	"	"	" No. 161	53 "
53	"	"	" No. 160	53 "
53	"	"	" No. 159	53 "
53	"	"	" No. 158	53 "

LUMLEY	....	St., e. s.,	.....	Lot	No. 157	.....	53 ft. front.
"	"	"	"	"	No. 156	.....	53 "
"	"	"	"	"	No. 155	.....	53 "
"	"	"	"	"	No. 154	.....	53 "
"	"	W. S.,	.....	"	No. 173	.....	53 "
"	"	"	"	"	No. 174	.....	53 "
"	"	"	"	"	No. 175	.....	53 "
"	"	"	"	"	No. 176	.....	53 "
"	"	"	"	"	No. 177	.....	53 "
"	"	"	"	"	No. 178	.....	53 "
"	"	"	"	"	No. 179	.....	53 "
"	"	"	"	"	No. 180	.....	53 "
"	"	"	"	"	No. 181	.....	53 "
"	"	"	"	"	No. 182	.....	53 "
"	"	"	"	"	No. 183	.....	53 "
"	"	"	"	"	No. 184	.....	53 "
"	"	"	"	"	No. 186	.....	53 "
"	"	"	"	"	No. 187	.....	53 "
"	"	"	"	"	No. 188	.....	53 "
"	"	"	"	"	No. 189	.....	53 "
"	"	"	"	"	No. 190	.....	53 "
"	"	"	"	"	No. 191	.....	53 "
HOPE	.....	St., e. s.,	.....	"	No. 215	.....	53 "
"	"	"	"	"	No. 214	.....	53 "
"	"	"	"	"	No. 213	.....	53 "
"	"	"	"	"	No. 212	.....	53 "
"	"	"	"	"	No. 211	.....	53 "
"	"	"	"	"	No. 210	.....	53 "
"	"	"	"	"	No. 209	.....	53 "
"	"	"	"	"	No. 208	.....	53 "
"	"	"	"	"	No. 207	.....	53 "
"	"	"	"	"	No. 206	.....	53 "
"	"	"	"	"	No. 205	.....	53 "
"	"	"	"	"	No. 204	.....	53 "
"	"	"	"	"	No. 201	.....	53 "
"	"	"	"	"	No. 200	.....	53 "
"	"	"	"	"	No. 199	.....	53 "
"	"	"	"	"	No. 198	.....	53 "
"	"	"	"	"	No. 197	.....	53 "
NORTH CITY LIMIT,	s. s.	.....	"	"	No. 66	.....	62 "
"	"	"	"	"	No. 67	.....	62 "
"	"	"	"	"	No. 106	.....	54 "
"	"	"	"	"	No. 107	.....	54 "
"	"	"	"	"	No. 108	.....	54 "
"	"	"	"	"	No. 109	.....	54 "

NOR

BATH

MARK



53 ft. front.	NORTH CITY LIMIT,	s. s. ....	Lot	No. 110	54 ft. front.
53	"	"	"	No. 150	54
53	"	"	"	No. 151	54
53	"	"	"	No. 152	54
53	"	"	"	No. 193	54
53	"	"	"	No. 194	54
53	"	"	"	No. 195	54
53	"	"	"	No. 196	54
53	BATHURST St., w. s.,	"	"	No. 136	50
53	"	"	"	No. 137	50
53	"	"	"	No. 138	50
53	"	"	"	No. 139	50
53	"	"	"	No. 140	50
53	"	"	"	No. 141	50
53	"	"	"	No. 142	50
53	"	"	"	No. 143	50
53	"	"	"	No. 144	50
53	"	"	"	No. 145	50
53	"	"	"	No. 146	50
53	"	"	"	No. 147	50
53	"	"	"	No. 148	50
53	"	"	"	No. 149	50
53	"	"	"	No. 150	50
53	"	"	"	No. 151	50
53	"	"	"	No. 152	50
53	"	"	"	No. 153	50
53	"	"	"	No. 154	50
53	"	"	"	No. 155	50
53	MARKHAM St., e. s.,	"	"	No. 135	50
53	"	"	"	No. 134	50
53	"	"	"	No. 132	50
53	"	"	"	No. 131	50
53	"	"	"	No. 130	50
53	"	"	"	No. 129	50
53	"	"	"	No. 128	50
53	"	"	"	No. 127	50
53	"	"	"	No. 126	50
53	"	"	"	No. 165	50
53	"	"	"	No. 164	50
62	"	"	"	No. 163	50
62	"	"	"	No. 162	50
54	"	"	"	No. 161	50
54	"	"	"	No. 160	50
54	"	"	"	No. 159	50
54	"	"	"	No. 158	50

MARKHAM St., s. s.,	Lot	No. 157	50 ft. front.
" " " "	"	No. 156	50 "
" " " W. S.,	"	No. 123	50 "
" " " "	"	No. 122	50 "
" " " "	"	No. 119	50 "
" " " "	"	No. 118	50 "
" " " "	"	No. 117	50 "
" " " "	"	No. 116	50 "
" " " "	"	No. 115	50 "
" " " "	"	No. 114	50 "
" " " "	"	No. 166	50 "
" " " "	"	No. 168	50 "
" " " "	"	No. 169	50 "
" " " "	"	No. 170	50 "
" " " "	"	No. 171	50 "
" " " "	"	No. 172	50 "
" " " "	"	No. 173	50 "
" " " "	"	No. 174	50 "
" " " "	"	No. 175	50 "
ONTARIO...St., e. s.,	Lot	No. 39	50 ft. front.
" " " "	"	No. 38	50 "
" " " "	"	No. 37	50 "
" " " "	"	No. 36	50 "
" " " "	"	No. 35	50 "
" " " "	"	No. 34	50 "
" " " "	"	No. 33	50 "
" " " "	"	No. 125	50 "
" " " "	"	No. 124	50 "
" " " "	"	No. 112	50 "
" " " "	"	No. 113	50 "
" " " "	"	No. 182	50 "
" " " "	"	No. 181	50 "
" " " "	"	No. 180	50 "
" " " "	"	No. 179	50 "
" " " "	"	No. 178	50 "
" " " "	"	No. 177	50 "
" " " "	"	No. 176	50 "
" " " W. S.,	"	No. 50	50 "
" " " "	"	No. 51	50 "
" " " "	"	No. 98	50 "
" " " "	"	No. 99	50 "
" " " "	"	No. 111	50 "
" " " "	"	No. 110	50 "
" " " "	"	No. 186	50 "
" " " "	"	No. 187	50 "

ONTA

ONTA

LUMI

LUMI

50 ft. front.	ONTARIO...	St. e. s.,	Lot	No. 188	50 ft. front.
50	"	"	"	No. 189	50
50	"	"	"	No. 190	50
50	"	"	"	No. 191	50
50	ONTARIO...	St., w. s.,	"	No. 192	50
50	"	"	"	No. 193	50
50	"	"	"	No. 194	50
50	"	"	"	No. 195	50
50	LUMLEY....	St., e. s.,	"	No. 56	50
50	"	"	"	No. 55	50
50	"	"	"	No. 54	50
50	"	"	"	No. 53	50
50	"	"	"	No. 52	50
50	"	"	"	No. 100	50
50	"	"	"	No. 101	50
50	"	"	"	No. 104	50
50	"	"	"	No. 105	50
50	"	"	"	No. 106	50
50	"	"	"	No. 107	50
50 ft. front.	"	"	"	No. 108	50
50	"	"	"	No. 109	50
50	"	"	"	No. 205	50
50	"	"	"	No. 204	50
50	"	"	"	No. 203	50
50	"	"	"	No. 202	50
50	"	"	"	No. 201	50
50	"	"	"	No. 200	50
50	"	"	"	No. 199	50
50	"	"	"	No. 198	50
50	"	"	"	No. 197	50
50	"	"	"	No. 196	50
50	LUMLEY....	St., w. s.,	"	No. 97	50
50	"	"	"	No. 96	50
50	"	"	"	No. 95	50
50	"	"	"	No. 94	50
50	"	"	"	No. 93	50
50	"	"	"	No. 92	50
50	"	"	"	No. 91	50
50	"	"	"	No. 90	50
50	"	"	"	No. 89	50
50	"	"	"	No. 88	50
50	"	"	"	No. 206	50
50	"	"	"	No. 207	50
50	"	"	"	No. 208	50
50	"	"	"	No. 209	50

LUMLEY	St., w. s.	Lot	No. 210	50 ft. front.
"	"	"	No. 211	50 "
"	"	"	No. 212	50 "
"	"	"	No. 213	50 "
"	"	"	No. 214	50 "
"	"	"	No. 215	50 "
HOPE	St., e. s.,	"	No. 77	50 "
"	"	"	No. 76	50 "
"	"	"	No. 75	50 "
"	"	"	No. 74	50 "
"	"	"	No. 73	50 "
"	"	"	No. 72	50 "
"	"	"	No. 78	50 "
"	"	"	No. 79	50 "
"	"	"	No. 80	50 "
"	e. s.,	"	No. 81	50 "
"	"	"	No. 82	50 "
"	"	"	No. 83	50 "
"	"	"	No. 225	50 "
"	"	"	No. 224	50 "
"	"	"	No. 223	50 "
"	"	"	No. 222	50 "
"	"	"	No. 221	50 "
"	"	"	No. 220	50 "
"	"	"	No. 219	50 "
"	"	"	No. 218	50 "
"	"	"	No. 217	50 "
"	"	"	No. 216	50 "

				A.	R.	P.
BATHURST St., w. s.,	Lot F.	6	....	2	2	23
do	do	G.	7	....	2	23
do	do	M.	12	....	2	23
ONTARIO...St., e. s.,	S. $\frac{1}{2}$ B.	2	....	1	1	11
do	do	E.	5	....	2	23
do	do	H.	8	....	2	23
do	do	L.	11	....	2	23
do	w. s.,	C.	3	....	5	1 06 ex. 3 sm. lots.
do	do	D.	4	....	5	1 06 sold—18750 sq. ft.
do	do	J.	9	....	5	1 06
do	do	K.	10	....	5	1 06

e. s. 3 sm. lots.  
sold—18750 sq. ft.

About 42 acres.

1.  
2.  
of un  
3.  
what  
enabl  
4.  
willin  
assur  
Chanc  
nume  
chanc  
5. I  
you to  
your  
price  
upon  
settlen  
6. T  
proprie  
7. T  
May, i  
Tore



### "A FEW WORDS AT PARTING."

1. I am now about to close, my friends.
2. I have done my best to bring the property I am about to dispose of under your favourable consideration.
3. I have pointed out the advantages which it possesses, and for what a small sum (making an approximate estimate) you will be enabled to purchase a Lot, build a cottage, and fence in your land.
4. I have told you that, as the proprietor of the property, I am willing to sell at such prices as must be advantageous to you. I have assured you of a good title, and given proof of it by a certificate of the Chancellor, and I have given a list of the lots to be sold, and so numerous are they, that every man may choose his Lot without much chance of any very great competition.
5. Having done all this, and desiring a *bona fide* sale, I must beg of you to take a walk over this Estate some fine day, and with a Plan in your hand select the Lot which suits you, make up your mind what price you will give for it, attend the sale and purchase it, and depend upon it you will never repent your bargain, whether it be for actual settlement or for an investment.
6. The Taxes for the current year will be paid by the present proprietor.
7. The sale will take place on the ground on Saturday, the 14th of May, inst., at 12 o'clock.

JAMES M. STRACHAN.

Toronto, May 3rd, 1864.

50 ft. front.

50 "  
50 "  
50 "  
50 "  
50 "  
50 "  
50 "  
50 "  
50 "  
50 "  
50 "  
50 "  
50 "  
50 "  
50 "  
50 "  
50 "  
50 "  
50 "  
50 "  
50 "

About 42 acres.

n. lots.  
50 sq. ft.

A NEW SERIES OF

It is now about a year since the first of these  
publications appeared, and during that time it has  
been found that the series is well received.

"I have published the series which I have  
written with much care and attention, and I have  
tried to make it as complete as possible."

"I have also published the series which I have  
written with much care and attention, and I have  
tried to make it as complete as possible."

"I have also published the series which I have  
written with much care and attention, and I have  
tried to make it as complete as possible."

"I have also published the series which I have  
written with much care and attention, and I have  
tried to make it as complete as possible."

"I have also published the series which I have  
written with much care and attention, and I have  
tried to make it as complete as possible."

"I have also published the series which I have  
written with much care and attention, and I have  
tried to make it as complete as possible."



Pl

Plc  
by 1  
Two  
The  
con  
The

NORTH CITY LIMIT

N 16 W.

Davenport  
1/4 of a mile.

9R.  
ch.

181	182	183	184	185	186	187	188	189	190	191	192	193	194	195	196	197	198	199	200
201	202	203	204	205	206	207	208	209	210	211	212	213	214	215	216	217	218	219	220
221	222	223	224	225	226	227	228	229	230	231	232	233	234	235	236	237	238	239	240
241	242	243	244	245	246	247	248	249	250	251	252	253	254	255	256	257	258	259	260
261	262	263	264	265	266	267	268	269	270	271	272	273	274	275	276	277	278	279	280
281	282	283	284	285	286	287	288	289	290	291	292	293	294	295	296	297	298	299	300
301	302	303	304	305	306	307	308	309	310	311	312	313	314	315	316	317	318	319	320
321	322	323	324	325	326	327	328	329	330	331	332	333	334	335	336	337	338	339	340
341	342	343	344	345	346	347	348	349	350	351	352	353	354	355	356	357	358	359	360
361	362	363	364	365	366	367	368	369	370	371	372	373	374	375	376	377	378	379	380
381	382	383	384	385	386	387	388	389	390	391	392	393	394	395	396	397	398	399	400
401	402	403	404	405	406	407	408	409	410	411	412	413	414	415	416	417	418	419	420
421	422	423	424	425	426	427	428	429	430	431	432	433	434	435	436	437	438	439	440
441	442	443	444	445	446	447	448	449	450	451	452	453	454	455	456	457	458	459	460
461	462	463	464	465	466	467	468	469	470	471	472	473	474	475	476	477	478	479	480
481	482	483	484	485	486	487	488	489	490	491	492	493	494	495	496	497	498	499	500
501	502	503	504	505	506	507	508	509	510	511	512	513	514	515	516	517	518	519	520
521	522	523	524	525	526	527	528	529	530	531	532	533	534	535	536	537	538	539	540
541	542	543	544	545	546	547	548	549	550	551	552	553	554	555	556	557	558	559	560
561	562	563	564	565	566	567	568	569	570	571	572	573	574	575	576	577	578	579	580
581	582	583	584	585	586	587	588	589	590	591	592	593	594	595	596	597	598	599	600
601	602	603	604	605	606	607	608	609	610	611	612	613	614	615	616	617	618	619	620
621	622	623	624	625	626	627	628	629	630	631	632	633	634	635	636	637	638	639	640
641	642	643	644	645	646	647	648	649	650	651	652	653	654	655	656	657	658	659	660
661	662	663	664	665	666	667	668	669	670	671	672	673	674	675	676	677	678	679	680
681	682	683	684	685	686	687	688	689	690	691	692	693	694	695	696	697	698	699	700
701	702	703	704	705	706	707	708	709	710	711	712	713	714	715	716	717	718	719	720
721	722	723	724	725	726	727	728	729	730	731	732	733	734	735	736	737	738	739	740
741	742	743	744	745	746	747	748	749	750	751	752	753	754	755	756	757	758	759	760
761	762	763	764	765	766	767	768	769	770	771	772	773	774	775	776	777	778	779	780
781	782	783	784	785	786	787	788	789	790	791	792	793	794	795	796	797	798	799	800
801	802	803	804	805	806	807	808	809	810	811	812	813	814	815	816	817	818	819	820
821	822	823	824	825	826	827	828	829	830	831	832	833	834	835	836	837	838	839	840
841	842	843	844	845	846	847	848	849	850	851	852	853	854	855	856	857	858	859	860
861	862	863	864	865	866	867	868	869	870	871	872	873	874	875	876	877	878	879	880
881	882	883	884	885	886	887	888	889	890	891	892	893	894	895	896	897	898	899	900
901	902	903	904	905	906	907	908	909	910	911	912	913	914	915	916	917	918	919	920
921	922	923	924	925	926	927	928	929	930	931	932	933	934	935	936	937	938	939	940
941	942	943	944	945	946	947	948	949	950	951	952	953	954	955	956	957	958	959	960
961	962	963	964	965	966	967	968	969	970	971	972	973	974	975	976	977	978	979	980
981	982	983	984	985	986	987	988	989	990	991	992	993	994	995	996	997	998	999	1000

202	203	204	205	206	207	208	209	210	211	212	213	214	215	216	217	218	219	220	221	222	223	224	225	226	227	228	229	230	231	232	233	234	235	236	237	238	239	240	
241	242	243	244	245	246	247	248	249	250	251	252	253	254	255	256	257	258	259	260	261	262	263	264	265	266	267	268	269	270	271	272	273	274	275	276	277	278	279	280
281	282	283	284	285	286	287	288	289	290	291	292	293	294	295	296	297	298	299	300	301	302	303	304	305	306	307	308	309	310	311	312	313	314	315	316	317	318	319	320
321	322	323	324	325	326	327	328	329	330	331	332	333	334	335	336	337	338	339	340	341	342	343	344	345	346	347	348	349	350	351	352	353	354	355	356	357	358	359	360
361	362	363	364	365	366	367	368	369	370	371	372	373	374	375	376	377	378	379	380	381	382	383	384	385	386	387	388	389	390	391	392	393	394	395	396	397	398	399	400
401	402	403	404	405	406	407	408	409	410	411	412	413	414	415	416	417	418	419	420	421	422	423	424	425	426	427	428	429	430	431	432	433	434	435	436	437	438	439	440
441	442	443	444	445	446	447	448	449	450	451	452	453	454	455	456	457	458	459	460	461	462	463	464	465	466	467	468	469	470	471	472	473	474	475	476	477	478	479	480
481	482	483	484	485	486	487	488	489	490	491	492	493	494	495	496	497	498	499	500	501	502	503	504	505	506	507	508	509	510	511	512	513	514	515	516	517	518	519	520
521	522	523	524	525	526	527	528	529	530	531	532	533	534	535	536	537	538	539	540	541	542	543	544	545	546	547	548	549	550	551	552	553	554	555	556	557	558	559	560
561	562	563	564	565	566	567	568	569	570	571	572	573	574	575	576	577	578	579	580	581	582	583	584	585	586	587	588	589	590	591	592	593	594	595	596	597	598	599	600
601	602	603	604	605	606	607	608	609	610	611	612	613	614	615	616	617	618	619	620	621	622	623	624	625	626	627	628	629	630	631	632	633	634	635	636	637	638	639	640
641	642	643	644	645	646	647	648	649	650	651	652	653	654	655	656	657	658	659	660	661	662	663	664	665	666	667	668	669	670	671	672	673	674	675	676	677	678	679	680
681	682	683	684	685	686	687	688	689	690	691	692	693	694	695	696	697	698	699	700	701	702	703	704	705	706	707	708	709	710	711	712	713	714	715	716	717	718	719	720
721	722	723	724	725	726	727	728	729	730	731	732	733	734	735	736	737	738	739	740	741	742	743	744	745	746	747	748	749	750	751	752	753	754	755	756	757	758	759	760
761	762	763	764	765	766	767	768	769	770	771	772	773	774	775	776	777	778	779	780	781	782	783	784	785	786	787	788	789	790	791	792	793	794	795	796	797	798	799	800
801	802	803	804	805	806	807	808	809	810	811	812	813	814	815	816	817	818	819	820	821	822	823	824	825	826	827	828	829	830	831	832	833	834	835	836	837	838	839	840
841	842	843	844	845	846	847	848	849	850	851	852	853	854	855	856	857	858	859	860	861	862	863	864	865	866	867	868	869	870	871	872	873	874	875	876	877	878	879	880
881	882	883	884	885	886	887	888	889	890	891	892	893	894	895	896	897	898	899	900	901	902	903	904	905	906	907	908	909	910	911	912	913	914	915	916	917	918	919	920
921	922	923	924	925	926	927	928	929	930	931	932	933	934	935	936	937	938	939	940	941	942	943	944	945	946	947	948	949	950	951	952	953	954	955	956	957	958	959	960
961	962	963	964	965	966	967	968	969	970	971	972	973	974	975	976	977	978	979	980	981	982	983	984	985	986	987	988	989	990	991	992	993	994	995	996	997	998	999	1000

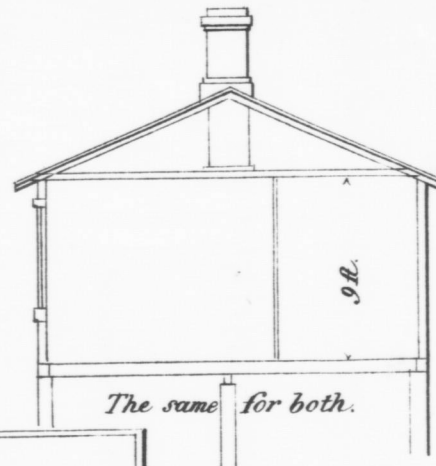
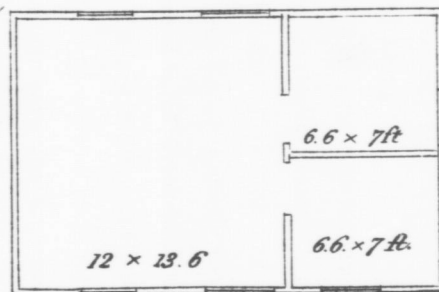






*Plan of Cottage, submitted  
by M<sup>r</sup> Wagner, Builder, with  
two Ground Plans.  
The largest Cottage he will  
contract to build for £60.  
The smaller for £40.*

*N<sup>o</sup> 1 \$160.*



*The same for both.*



*The same Elevation will do for both.*



*N<sup>o</sup> 2 \$240.*

*W. C. Chewell & Co. Lith. Toronto.*

Handwritten mark resembling a stylized 'D' or 'P'.



"FURTHER CERTIFICATE OF TITLE."

---

WELLINGTON STREET, TORONTO, May 6, 1864.

J. M. STRACHAN, Esq., York Street,

*Re CROOKSHANK ESTATE.*

DEAR SIR,

Having had occasion to examine the title of the lands purchased by you from the Hon'ble George Crookshank, and now offered for sale by Public Auction on the 14th inst., I am prepared to certify that your title to these lands is perfectly good, free from all incumbrances except the Mortgage to Mr. Crookshank, and by an arrangement between you and the Trustees holding this Mortgage, (whose Solicitor I am,) it will at any time be removed from any of the Lots sold, on the purchase money of any particular Lot being paid to the Trustees, or by their order to you.

I will be glad to answer any farther enquiries from intending purchasers.

Yours faithfully,

ADAM CROOKS.