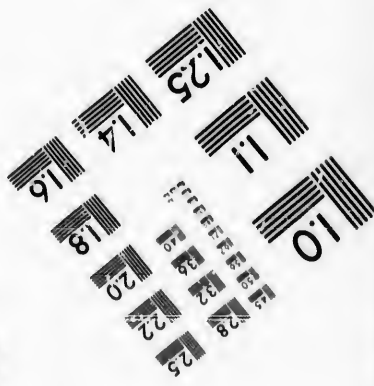
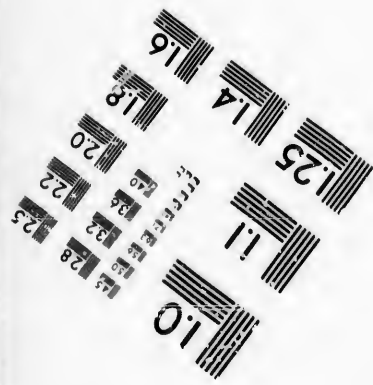
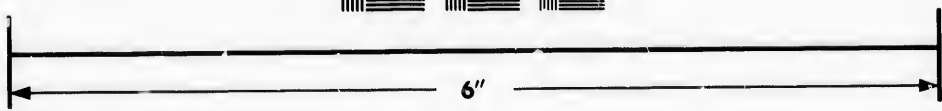
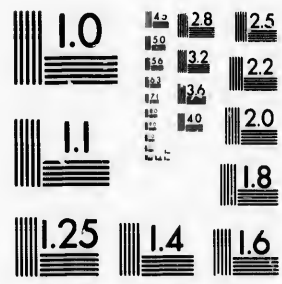


**IMAGE EVALUATION
TEST TARGET (MT-3)**



**Photographic
Sciences
Corporation**

23 WEST MAIN STREET
WEBSTER, N.Y. 14580
(716) 872-4503

15 28
18 32
20 25
22 25

**CIHM/ICMH
Microfiche
Series.**

**CIHM/ICMH
Collection de
microfiches.**



Canadian Institute for Historical Microreproductions / Institut canadien de microreproductions historiques

10
15

© 1987

Technical and Bibliographic Notes/Notes techniques et bibliographiques

The Institute has attempted to obtain the best original copy available for filming. Features of this copy which may be bibliographically unique, which may alter any of the images in the reproduction, or which may significantly change the usual method of filming, are checked below.

L'Institut a microfilmé le meilleur exemplaire qu'il lui a été possible de se procurer. Les détails de cet exemplaire qui sont peut-être uniques du point de vue bibliographique, qui peuvent modifier une image reproduite, ou qui peuvent exiger une modification dans la méthode normale de filmage sont indiqués ci-dessous.

- | | |
|--|--|
| <input checked="" type="checkbox"/> Coloured covers/
Couverture de couleur | <input type="checkbox"/> Coloured pages/
Pages de couleur |
| <input type="checkbox"/> Covers damaged/
Couverture endommagée | <input type="checkbox"/> Pages damaged/
Pages endommagées |
| <input type="checkbox"/> Covers restored and/or laminated/
Couverture restaurée et/ou pelliculée | <input type="checkbox"/> Pages restored and/or laminated/
Pages restaurées et/ou pelliculées |
| <input type="checkbox"/> Cover title missing/
Le titre de couverture manque | <input checked="" type="checkbox"/> Pages discoloured, stained or foxed/
Pages décolorées, tachetées ou piquées |
| <input type="checkbox"/> Coloured maps/
Cartes géographiques en couleur | <input type="checkbox"/> Pages detached/
Pages détachées |
| <input checked="" type="checkbox"/> Coloured ink (i.e. other than blue or black)/
Encre de couleur (i.e. autre que bleue ou noire) | <input checked="" type="checkbox"/> Showthrough/
Transparence |
| <input type="checkbox"/> Coloured plates and/or illustrations/
Planches et/ou illustrations en couleur | <input type="checkbox"/> Quality of print varies/
Qualité inégale de l'impression |
| <input type="checkbox"/> Bound with other material/
Relié avec d'autres documents | <input type="checkbox"/> Includes supplementary material/
Comprend du matériel supplémentaire |
| <input type="checkbox"/> Tight binding may cause shadows or distortion
along interior margin/
La reliure serrée peut causer de l'ombre ou de la
distorsion le long de la marge intérieure | <input type="checkbox"/> Only edition available/
Seule édition disponible |
| <input type="checkbox"/> Blank leaves added during restoration may
appear within the text. Whenever possible, these
have been omitted from filming/
Il se peut que certaines pages blanches ajoutées
lors d'une restauration apparaissent dans le texte,
mais, lorsque cela était possible, ces pages n'ont
pas été filmées. | <input type="checkbox"/> Pages wholly or partially obscured by errata
slips, tissues, etc., have been refilmed to
ensure the best possible image/
Les pages totalement ou partiellement
obscurcies par un feuillet d'errata, une pelure,
etc., ont été filmées à nouveau de façon à
obtenir la meilleure image possible. |
| <input type="checkbox"/> Additional comments:/
Commentaires supplémentaires: | |

This item is filmed at the reduction ratio checked below/
Ce document est filmé au taux de réduction indiqué ci-dessous.

10X	12X	14X	16X	18X	20X	22X	24X	26X	28X	30X	32X
								/			

The copy filmed here has been reproduced thanks to the generosity of:

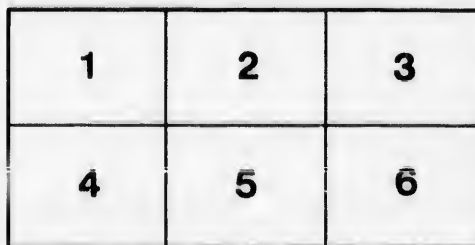
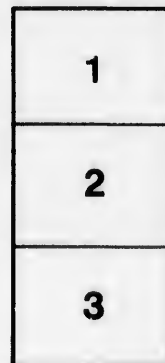
Saint John Regional Library

The images appearing here are the best quality possible considering the condition and legibility of the original copy and in keeping with the filming contract specifications.

Original copies in printed paper covers are filmed beginning with the front cover and ending on the last page with a printed or illustrated impression, or the back cover when appropriate. All other original copies are filmed beginning on the first page with a printed or illustrated impression, and ending on the last page with a printed or illustrated impression.

The last recorded frame on each microfiche sheet contains the symbol \rightarrow (meaning "CONTINUED"), or the symbol ∇ (meaning "END"), whichever applies.

Maps, plates, charts, etc., may be filmed at different reduction ratios. Those too large to be entirely included in one exposure are filmed beginning in the upper left hand corner, left to right and top to bottom, as many frames as required. The following diagrams illustrate the method:



L'exemplaire filmé fut reproduit grâce à la générosité de:

Saint John Regional Library

Les images suivantes ont été reproduites avec le plus grand soin, compte tenu de la condition et de la netteté de l'exemplaire filmé, et en conformité avec les conditions du contrat de filmage.

Les exemplaires originaux dont la couverture en papier est imprimée sont filmés en commençant par le premier plat et en terminent soit par la dernière page qui comporte une empreinte d'impression ou d'illustration, soit par le second plat, selon le cas. Tous les autres exemplaires originaux sont filmés en commençant par la première page qui comporte une empreinte d'impression ou d'illustration et en terminent par la dernière page qui comporte une telle empreinte.

Un des symboles suivants apparaîtra sur la dernière image de chaque microfiche, selon le cas: le symbole \rightarrow signifie "A SUIVRE", le symbole ∇ signifie "FIN".

Les cartes, planches, tableaux, etc., peuvent être filmés à des taux de réduction différents. Lorsque le document est trop grand pour être reproduit en un seul cliché, il est filmé à partir de l'angle supérieur gauche, de gauche à droite, et de haut en bas, en prenant le nombre d'images nécessaire. Les diagrammes suivants illustrent la méthode.



72
1870
1871

FREE PUBLIC LIBRARY
SAINT JOHN, N. B.

PRESENTED

"A Friend"

City

RC

Accession 36509 Class 655.11

Sa2t

FOR REFERENCE

686.209 Adult
Sai

NOT TO BE TAKEN FROM THE ROOM
36509



Yonge Friedrich Fust was a blythesome boy,
And Bertha von Schmidt his cheefest joy,

For she was fayre and gentil and trewe;
And on summer eves full oft they sat
Prattling lowe together of thys and that,

As fond lovers han alwaies ben wont to doe.



Fredric loved Bertha.

W. H. B. 1878

On benche where they used to sitte, one day,
Poor Friedrich to give his feelings plaie,
Graved in lettres large bothe **F** and **B**;
And twixte these lettres graved he an harte
Peerced through and throughe with an arrowe darte,
As in pictured hartes ye schal often see.



RED CUTS BERTHA'S NAME.

COPYRIGHT 1904 BY W. W. BENTON.

And now that hys kerving brighte shold bee,
He fruites hath taen fro one cherrie tree
That grew therby, and hir color expreste,
Wherwith all his werke he then dyd staine,
That it might be seene righte redde and plaine
How hys love for Bertha here stode confeste.



Qnd drops color in.



Now scarce hadde he don whan he was ware
Of Herr Gutenberg, his teacher there

Straying alone, while his besy braine teemed
With thoghtes of that arte, still unrevealed,
Whiche wher Friedrich satte now lay concealed
In processe whereof never yet hadde he dreamed.



Gutenberg, his teacher came.

COPYRIGHT 1884 BY J. A. QUINCY

This techer streightway gan Friedrich chide

For an idel knave: ye ladde did abide

Stock stille on his seat, till to scape a blowe

He soden spronge, slipt backward, and flatte

On a paper scrolle down square he satte,

By Gutenberg droopt, whiche lay spred belowe.



HE CATASTROPHE!

Frederich quik uprose from offe that groun̄de,
But Gutenberg stode as one astoun̄de,
Gazinge with fixt eyen on these lettres red
And pierced herte,—for to light was broughte
That arte he hadde long alle in vaine ysought,
Which thys idelere here gat withoute troubling his hed.



The first copy.

Of Ialousie then fulle and eke of ioye,
Herr Gutenberg was seize and carrie off the boy,
Thys secrets for to garde and this forme emploie
In estamping impressures fulle many a one;

For his herte itt was now harde as is ony stone,
Soe might he but worke out this aventure alone.
And the poore Friedrich cryed and strogled amain,
And Bertha sweete wept sore, yet it was alle in vaine,
Till ye processe itt was proven be both trew and sounde:
And thus was ye grate art of alle artes yfounde.

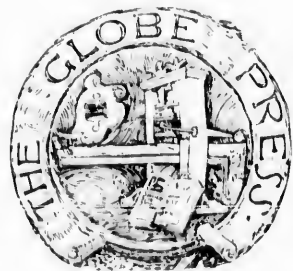
" Res explicita est."

W. P. D.

*Saint John, N. B.
January 1st, 1893.*



the new invention.





Ye Carrier.

