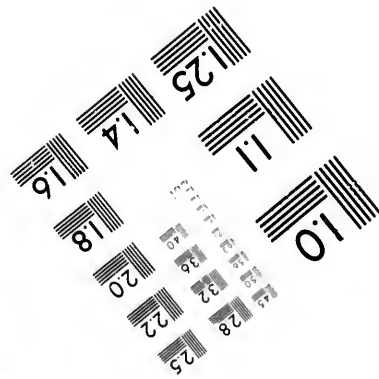
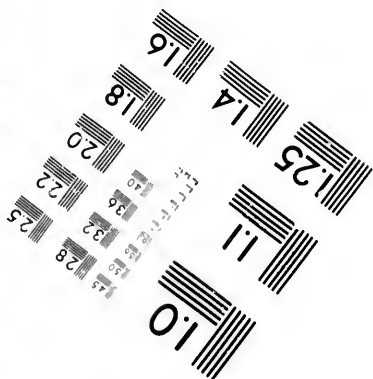
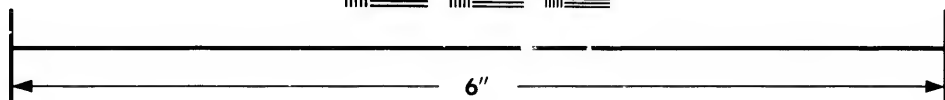
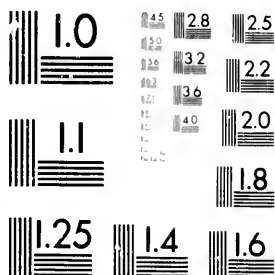


**IMAGE EVALUATION
TEST TARGET (MT-3)**



**Photographic
Sciences
Corporation**

23 WEST MAIN STREET
WEBSTER, N.Y. 14580
(716) 872-4503



**CIHM/ICMH
Microfiche
Series.**

**CIHM/ICMH
Collection de
microfiches.**



Canadian Institute for Historical Microreproductions

Institut canadien de microreproductions historiques

1980

Technical and Bibliographic Notes/Notes techniques et bibliographiques

The Institute has attempted to obtain the best original copy available for filming. Features of this copy which may be bibliographically unique, which may alter any of the images in the reproduction, or which may significantly change the usual method of filming, are checked below.

L'Institut a microfilmé le meilleur exemplaire qu'il lui a été possible de se procurer. Les détails de cet exemplaire qui sont peut-être uniques du point de vue bibliographique, qui peuvent modifier une image reproduite, ou qui peuvent exiger une modification dans la méthode normale de filmage sont indiqués ci-dessous.

- Coloured covers/
Couverture de couleur
- Covers damaged/
Couverture endommagée
- Covers restored and/or laminated/
Couverture restaurée et/ou pelliculée
- Cover title missing/
Le titre de couverture manque
- Coloured maps/
Cartes géographiques en couleur
- Coloured ink (i.e. other than blue or black)/
Encre de couleur (i.e. autre que bleue ou noire)
- Coloured plates and/or illustrations/
Planches et/ou illustrations en couleur
- Bound with other material/
Relié avec d'autres documents
- Tight binding may cause shadows or distortion
along interior margin/
La reliure serrée peut causer de l'ombre ou de la
distortion le long de la marge intérieure
- Blank leaves added during restoration may
appear within the text. Whenever possible, these
have been omitted from filming/
Il se peut que certaines pages blanches ajoutées
lors d'une restauration apparaissent dans le texte,
mais, lorsque cela était possible, ces pages n'ont
pas été filmées.
- Additional comments:/
Commentaires supplémentaires:

- Coloured pages/
Pages de couleur
- Pages damaged/
Pages endommagées
- Pages restored and/or laminated/
Pages restaurées et/ou pelliculées
- Pages discoloured, stained or foxed/
Pages décolorées, tachetées ou piquées
- Pages detached/
Pages détachées
- Showthrough/
Transparence
- Quality of print varies/
Qualité inégale de l'impression
- Includes supplementary material/
Comprend du matériel supplémentaire
- Only edition available/
Seule édition disponible
- Pages wholly or partially obscured by errata
slips, tissues, etc., have been refilmed to
ensure the best possible image/
Les pages totalement ou partiellement
obscurcies par un feuillet d'errata, une pelure,
etc., ont été filmées à nouveau de façon à
obtenir la meilleure image possible.

This item is filmed at the reduction ratio checked below/
Ce document est filmé au taux de réduction indiqué ci-dessous.

10X	14X	18X	22X	26X	30X
<input type="checkbox"/>	<input type="checkbox"/>	<input type="checkbox"/>	<input checked="" type="checkbox"/>	<input type="checkbox"/>	<input type="checkbox"/>
12X	16X	20X	24X	28X	32X

The copy filmed here has been reproduced thanks to the generosity of:

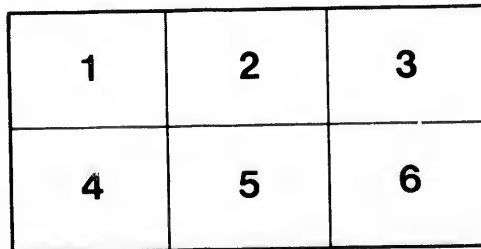
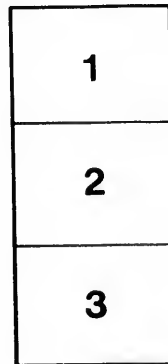
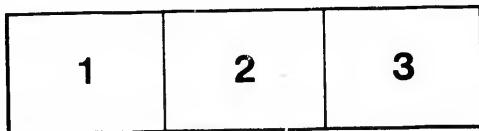
Izaak Walton Killam Memorial Library
Dalhousie University

The images appearing here are the best quality possible considering the condition and legibility of the original copy and in keeping with the filming contract specifications.

Original copies in printed paper covers are filmed beginning with the front cover and ending on the last page with a printed or illustrated impression, or the back cover when appropriate. All other original copies are filmed beginning on the first page with a printed or illustrated impression, and ending on the last page with a printed or illustrated impression.

The last recorded frame on each microfiche shall contain the symbol \rightarrow (meaning "CONTINUED"), or the symbol ∇ (meaning "END"), whichever applies.

Maps, plates, charts, etc., may be filmed at different reduction ratios. Those too large to be entirely included in one exposure are filmed beginning in the upper left corner, left to right and top to bottom, as many frames as required. The following diagrams illustrate the method:



L'exemplaire filmé fut reproduit grâce à la générosité de:

Izaak Walton Killam Memorial Library
Dalhousie University

Les images suivantes ont été reproduites avec le plus grand soin, compte tenu de la condition et de la netteté de l'exemplaire filmé, et en conformité avec les conditions du contrat de filmage.

Les exemplaires originaux dont la couverture en papier est imprimée sont filmés en commençant par le premier plat et en terminant soit par la dernière page qui comporte une empreinte d'impression ou d'illustration, soit par le second plat, selon le cas. Tous les autres exemplaires originaux sont filmés en commençant par la première page qui comporte une empreinte d'impression ou d'illustration et en terminant par la dernière page qui comporte une telle empreinte.

Un des symboles suivants apparaîtra sur la dernière image de chaque microfiche, selon le cas: le symbole \rightarrow signifie "A SUIVRE", le symbole ∇ signifie "FIN".

Les cartes, planches, tableaux, etc., peuvent être filmés à des taux de réduction différents. Lorsque le document est trop grand pour être reproduit en un seul cliché, il est filmé à partir de l'angle supérieur gauche, de gauche à droite, et de haut en bas, en prenant le nombre d'images nécessaire. Les diagrammes suivants illustrent la méthode.

ails
du
modifier
une
image

errata
to

pelure,
n à

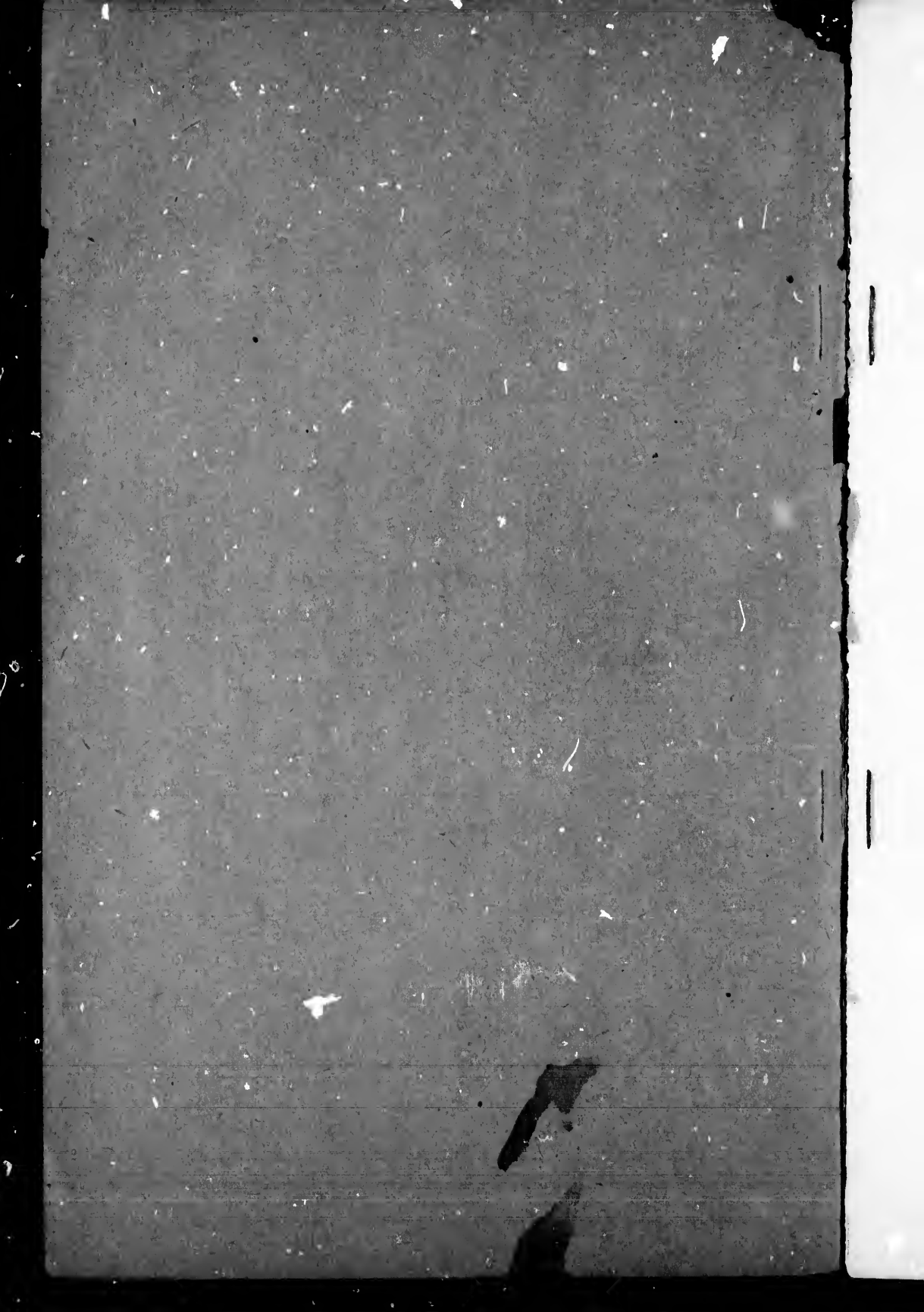


32X

[FROM THE AMERICAN JOURNAL OF SCIENCE, VOL. I, MARCH, 1896.]

ON A NEW ALKALI HORNBLLENDE AND A
TITANIFEROUS ANDRADITE FROM THE
NEPHELINE-SYENITE OF DUNGANNON,
HASTINGS COUNTY, ONTARIO.

By FRANK D. ADAMS and B. J. HARRINGTON,
MC GILL COLLEGE, MONTREAL.



[FROM THE AMERICAN JOURNAL OF SCIENCE, VOL. I, MARCH, 1896.]

ON A NEW ALKALI HORNBLLENDE AND A
TITANIFEROUS ANDRADITE FROM THE
NEPHELINE-SYENITE OF DUNGANNON,
HASTINGS COUNTY, ONTARIO.

By FRANK D. ADAMS and B. J. HARRINGTON,
MC GILL COLLEGE, MONTREAL.

ART. XXII.—*On a new Alkali Hornblende and a titaniferous Andradite from the Nepheline-Syenite of Dungannon, Hastings County, Ontario*; by FRANK D. ADAMS and B. J. HARRINGTON, McGill College, Montreal.

IN a paper which appeared in the number of this Journal for July, 1894, the discovery of a large area of nepheline-syenite in the township of Dungannon, in the Province of Ontario, was announced and the geological relations and mineralogical characters of the mass briefly described.

One of the many peculiarities of this rock is the absence from it of the mineral pyroxene, which is usually the chief iron-magnesia constituent in rocks of this class, its place being taken by hornblende and mica, but even these minerals are present in comparatively small amount. Of the hornblende two varieties, occurring in different parts of the mass, were distinguished. The first, from near the York river, has a large axial angle with strong pleochroism in tints varying from pale yellow to deep green, and although containing a considerable amount of soda, probably approaches common green hornblende in composition. The second variety, which occurs in a series of exposures about two miles to the east of the village of Bancroft, is quite different in character, having a small axial angle with high extinction and a much stronger pleochroism in the bluish tints suggestive of arfvedsonite.

A number of additional thin sections have been prepared and in the present paper the results of a further investigation of the optical properties and chemical composition of this second variety of hornblende are presented.

Hornblende—The mineral occurs in hypidiomorphic grains, which show the usual hornblende cleavages; it is optically negative, a being the acute bisectrix, but the double refraction is weak.

It possesses, as has been mentioned, a strong pleochroism as follows:

a = yellowish green. b and c = deep bluish green.

The absorption is $c = b > a$. b and c , if not quite equal in absorption, are nearly so, hence sections cut at right angles to the acute bisectrix show but little pleochroism and are nearly isotropic. c lies nearest the vertical axis, but whether toward the acute angle β or on the opposite side cannot be determined as the mineral does not possess a good crystalline form; it makes with the vertical axis a large angle the extinction amounting to 30° . The plane of the optic axes is the clinopina-

coid, and there is a strong dispersion—red greater than violet. What drew especial attention to this hornblende in the first instance was the fact that it appeared to be nearly uniaxial. When a section, cut at right angles to the acute bisectrix, is examined between crossed nicols in convergent light, a black cross is seen somewhat thickened toward the intersection of the arms. This cross, on revolving the stage, divides into two hyperbolas, but these separate from one another but very little, and appear to separate less than they really do, on account of the fact that the low double refraction and deep color of these sections causes the hyperbolas to be ill-defined, while the whole field is very dark. The dispersion, however, makes itself evident in the varying colors on the sides of the hyperbolas. When, however, a gypsum plate giving a red of the first order is inserted above the objective the hyperbolas become a little better defined, although still not sufficiently definite to allow the axial angle to be accurately measured. The axial angle is found to be over 30° , possibly as much as 45° , which, however, is still very small for hornblende, being about one-half the usual value. Our thanks are due to Professor Rosenbusch for his assistance in working out these optical relations.

On examining a large series of thin sections of nepheline-syenites representing most of the important occurrences hitherto discovered, only two rocks were found which contain a hornblende at all similar to that above described. The first of these is the nepheline-syenite from the Corporation Quarry at Montreal, in which hornblende with the same small axial angle, low double refraction, intense color and pleochroism, large extinction angle and high specific gravity, occurs intergrown with the augite. The second is the hornblende described by Hackman under the name of arfvedsonite and which occurs intergrown with aegerine in the nepheline-syenite from Umptek in the Kola peninsula.* This mineral, however, differs from typical arfvedsonite in having an extinction of about 40° as well as in several other important respects. It possesses moreover a very small axial angle, although this fact is not noted by Hackman, while in true arfvedsonite the axial angle is very large. This Kola hornblende is much lighter in color than the hornblende from either of the above mentioned Canadian localities.

In order to determine the chemical composition of this somewhat remarkable variety of hornblende from the Dunganon rock, it was decided to separate a portion for analysis. A considerable quantity of the rock was accordingly reduced to

* "Petrographische Beschreibung des Nephelinsyenites vom Umptek," von Victor Hackman. Kuopio, 1894, p. 14.

powder and passed through a sieve of 43 meshes to the inch—the rock being rather coarse in grain—and after having been freed from dust was treated with Thoulet's solution, having a specific gravity of 3.13, in a large separating funnel. In this way an almost complete separation of the colored constituents was effected. These latter, which sank in Thoulet's solution, were subjected to the action of a bar magnet and then treated with dilute hydrochloric acid, and various impurities thus removed. The purified powder was then treated first with Klein's solution, having a specific gravity of 3.22, and then with methylene iodide, having a specific gravity of 3.323. In both fluids practically everything sank, only a few composite grains floating. A microscopic examination showed the powder now to consist of grains of hornblende and of garnet with some composite grains consisting partly of nepheline. Further separation became difficult since, as was subsequently ascertained, the hornblende had a specific gravity of 3.433, and the specific gravity of the garnet was 3.739, while many composite grains consisting of garnet and nepheline had a specific gravity practically identical with that of the hornblende. As the electro-magnet was found to be useless, both minerals being readily attracted by it, Retger's silver nitrate method was employed.* The silver nitrate was fused in a properly arranged test tube, and after the introduction of the powder, potassium nitrate in powder was gradually added to the fused mass until the garnet fell, the whole being frequently stirred and maintained at a temperature of from 200° to 240° C. On allowing the mass to solidify, a portion of the powder was found to have collected at the top of the mass, while the rest was at the bottom, the intervening part being quite free from mineral grains. The solid mass was then cut in two and the salts dissolved by treatment with water. After three successive separations the hornblende was obtained quite free from grains of garnet—the only impurities present being some composite grains consisting of garnet and nepheline. This powder was then placed under a lens and all the composite grains picked out by means of a fine needle. In this way a quantity of pure hornblende sufficient for purposes of analysis was obtained, while the garnet was obtained directly in a state of purity without the necessity of a final separation by hand.

Both minerals were found to be quite fresh and bright and quite unacted upon by the fused salts.

The hornblende† was then analyzed by Dr. Harrington with the following results:

* "Ueber Schwere Flüssigkeiten zur Trennung von Mineralien." Neues Jahrbuch für Mineralogie, etc., 1889, ii, p. 190.

† We would suggest Hastingsite as a varietal name for this hornblende, connecting it with the region where it occurs.

Silica	34.184
Titanium dioxide	1.527
Alumina	11.517
Ferric oxide	12.621
Ferrous oxide	21.979
Manganous oxide629
Lime	9.867
Magnesia	1.353
Potash	2.286
Soda	3.290
Water*348
	99.601
Specific gravity	3.433

The atomic and quantivalent ratios deducible from the above analysis are as follows:

	Atomic.	Quantivalent.
Si	$570 \times 4 = 2280$	} 2356 2356
Ti	$19 \times 4 = 76$	
Al	$226 \times 3 = 678$	} 1152
Fe ^{III}	$158 \times 3 = 474$	
Fe ^{II}	$305 \times 2 = 610$	
Mn	$9 \times 2 = 18$	} 2354
Ca	$176 \times 2 = 352$	
Mg	$34 \times 2 = 68$	
K	48 48	
Na	106 106	} 1202

The ratio of $(R_2O+RO) : R_2O_3 : SiO_2$ is 601 : 192 : 589, or approximately 3 : 1 : 3, and obviously the mineral is a true orthosilicate agreeing fairly with the formula $(R_3^I R_3^{II})_3 R_2^{III} Si_3 O_{12}$, or, more fully, $(Fe, Mn, Ca, Mg, K_2, Na_2)_3 (Fe, Al)_2 (Si, Ti)_3 O_{12}$ —a constitution analogous to that of garnet.

So far as we are aware no other hornblende containing so small a proportion of silica has been analyzed; but the small percentage of silica is explained by the large proportions of ferrous and ferric oxides. This is made plain by the following formulæ and the corresponding percentages of silica deduced from them:

Formula.	P. C. of SiO ₂ .
3FeO, Fe ₂ O ₃ , 3SiO ₂	32.19
3CaO, Fe ₂ O ₃ , 3SiO ₂	35.43
3FeO, Al ₂ O ₃ , 3SiO ₂	36.14
3Na ₂ O, Al ₂ O ₃ , 3SiO ₂	38.38
3CaO, Al ₂ O ₃ , 3SiO ₂	40.00

* Loss after igniting for about fifteen minutes. On further ignition the powder gained in weight owing to oxidation of the ferrous oxide.

The Dungannon hornblende is interesting in connection with the views of Scharizer, who suggested in 1884* that many of the aluminous hornblendes might be regarded as molecular compounds of the metasilicate actinolite, $\text{Ca}(\text{Mg}, \text{Fe})_3 \text{Si}_3 \text{O}_{11}$, and the orthosilicate $(\text{R}_2\text{R})_3 \text{R}_2 \text{Si}_3 \text{O}_{12}$, for which he employed the name syntagmatite, originally given by Breithaupt to a black hornblende from Vesuvius. The hornblende from the Island of Jan Mayen, analyzed by Scharizer,† and that from Bohemia, analyzed by Schmidt,‡ agree closely with the so-called "syntagmatite molecule." The Stenzelberg mineral, analyzed by Rammelsberg,§ also approximates to it; but these three and the Dungannon hornblende are the only ones yet examined, so far as we are aware, that give at all closely the syntagmatite ratios. The following table gives the analyses of these four minerals and the molecular ratios deducible from them:

Jan Mayen.	Molec. R.		Bohemia.	Mol. R.		Stenzel- berg.	Mol. R.		Dungan- non.	Mol. R.	
SiO ₂	39.167	653	653	39.66	661	672	39.62	660	662	34.184	570
TiO ₂	----	----	----	0.89	11	672	0.19	2	662	1.527	19
Al ₂ O ₃	14.370	140	} 218	14.83	145	} 222	14.92	146	} 210	11.517	113
Fe ₂ O ₃	12.423	78		12.37	77		10.28	64		12.621	79
FeO	5.856	81	} 648	1.97	27	} 663	7.67	106	} 685	21.979	305
MnO	1.505	21		---	---		0.24	3		0.629	9
MgO	10.521	263	14.25	356	11.32	283	1.353	34	} 620	176	
CaO	11.183	200	12.74	227	12.65	226	9.867	24			
K ₂ O	2.013	21	1.25	13	2.18	23	2.286	24	} 620	53	
Na ₂ O	2.478	40	2.47	40	1.12	18	3.290	53			
H ₂ O	.396	22	----	---	0.48	26	0.348	19	} 620	19	
	99.912		100.43		100.67		99.601				

In all four analyses the ratios for $(\text{R}_2\text{O} + \text{RO}) : \text{R}_2\text{O}_3 : \text{SiO}_2$ (including TiO_2 when present) are practically 3 : 1 : 3, or, to give the exact figures (excluding water):

	$(\text{R}_2\text{O} + \text{RO})$	R_2O_3	SiO_2
Jan Mayen	2.87	1	2.99
Bohemia	2.99	1	3.02
Stenzelberg	3.14	1	3.15
Dungannon	3.12	1	3.07

The ratio $(\text{R}_2\text{O} + \text{CaO}) : (\text{Mg}, \text{Mn}, \text{Fe})\text{O}$ is, as observed by Scharizer in the case of the Jan Mayen and Bohemian hornblendes, approximately 3 : 4, thus:

* N. Jahrb. f. Min., 1884, ii, p. 143.

† loc. cit.

‡ Min. Mitth., iv, 23, 1831.

§ Pogg. Ann., 1858, ciii, 454.

	Including Water.		Excluding Water.	
	(R ₂ O+CaO) : (Mg, Mn, Fe)O.		(R ₂ O+CaO) : (Mg, Mn, Fe)O.	
Jan Mayen.....	3	: 3.87	3	: 4.17
Bohemia.....	3	: 4.10	3	: 4.10
Stenzelberg.....	3	: 4.02	3	: 4.38
Dungannon.....	3	: 3.84	3	: 4.11

Scharizer adopts the foregoing ratios (3 : 1 : 3 and 3 : 4) as those of syntagmatite in calculating the composition of hornblendes intermediate between (R₁R₂)₃R₃Si₃O₁₂ and actinolite. He assumes in the first place that all the alumina and ferric oxide belong to the syntagmatite molecule (Σ). The sum of the Al₂O₃ and Fe₂O₃ molecules (from the molecular ratio) multiplied by *three*, gives (SiO₂) Σ on the one hand and (R₂O+RO) Σ on the other. The sum of (R₂O+RO) Σ divided in the proportion of 3 : 4 gives (R₂O+CaO) Σ and MgO+FeO) Σ . Subtracting (MgO+FeO) Σ from the sum of the corresponding molecules deduced from the analysis gives (MgO+FeO) Λ —that is the number of molecules of magnesia and ferrous oxide belonging to the actinolite molecule (Λ)—and (MgO+FeO) Λ divided by three (see actinolite formula) gives the lime molecules of the actinolite (CaO) Λ . This value subtracted from the total number of lime molecules gives (CaO) Σ , and (CaO) Σ subtracted from (R₂O+CaO) Σ gives the alkali molecules (in some cases including H₂O). Finally (MgO+CaO) Λ gives (SiO₂) Λ . These statements will be made clearer by the following example, one of those selected by Scharizer.

HORNBLLENDE FROM EDENVILLE, ANALYZED BY RAMMELSHERG.

Original analysis.	Molcc. R. deduced from analysis.	Syntagmatite.	Actinolite.	Calculated composition.	Original analysis calc. to 100.
SiO ₂	51.67	222	609	51.97	52.66
Al ₂ O ₃ ..	5.75	56	---	5.99	5.86
Fe ₂ O ₃ ..	2.86	18	---	3.00	2.91
MgO.....	23.37	584	127	457	23.82
CaO.....	12.42	222	70	152	12.66
Na ₂ O.....	0.75	12	12	---	0.78
K ₂ O.....	0.84	9	9	---	0.88
H ₂ O.....	0.46	25	4	---	0.47
	98.12			100.00	100.00

$$\begin{aligned} \text{Here } (\text{SiO}_2)_\Sigma &= 3(56 + 18) = 222 \\ (\text{R}_2\text{O} + \text{RO})_\Sigma &= 3(56 + 18) = 222 \\ (\text{R}_2\text{O} + \text{CaO})_\Sigma &= 3 \frac{(\text{R}_2\text{O} + \text{RO})_\Sigma}{7} = \frac{222 \times 3}{7} = 95 \\ (\text{MgO})_\Sigma &= 4 \frac{(\text{R}_2\text{O} + \text{RO})_\Sigma}{7} = \frac{222 \times 4}{7} = 127 \\ (\text{MgO})_\Lambda &= 584 - (\text{MgO})_\Sigma = 584 - 127 = 457 \\ (\text{CaO})_\Lambda &= \frac{(\text{MgO})_\Lambda}{3} = \frac{457}{3} = 152 \\ (\text{CaO})_\Sigma &= 222 - (\text{CaO})_\Lambda = 222 - 152 = 70 \\ (\text{Na}_2\text{O} + \text{K}_2\text{O} + \text{H}_2\text{O})_\Sigma &= (\text{R}_2\text{O} + \text{CaO})_\Sigma - (\text{CaO})_\Sigma = 95 - 70 = 25 \\ \text{But } (\text{Na}_2\text{O} + \text{K}_2\text{O})_\Sigma &= 12 + 9 = 21 \\ &\therefore (\text{H}_2\text{O})_\Sigma = 4 \\ \text{Finally } (\text{SiO}_2)_\Lambda &= (\text{MgO} + \text{CaO})_\Lambda = 457 + 152 = 609 \end{aligned}$$

Having thus deduced the molecular ratios of the syntagmatite and actinolite, the numbers for each constituent are multiplied by the corresponding molecular weights, in order to obtain the theoretical relative weights of the constituents of the mixed hornblende.

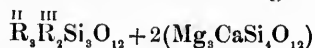
Syntagmatite.	Actinolite.
222 × 60 = 13320	609 × 60 = 36540
56 × 102.6 = 5745	-----
18 × 160 = 2880	-----
127 × 40 = 5080	457 × 40 = 18280
70 × 56 = 3920	152 × 56 = 8512
12 × 62 = 744	-----
9 × 94 = 846	-----
4 × 18 = 72	-----
32607	63332

Then,

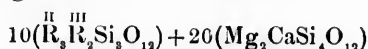
$$(32607 + 63332) : (13320 + 36540) :: 100 : x$$

and $x = 51.97 = \text{p. c. of SiO}_2$ in the mixed hornblende. And in like manner the percentages of the other constituents are calculated.

But 32607 : 63332 practically as 1 : 2, and therefore the formula of the Edenville hornblende might be regarded as



or as Scharizer gives it



The analyses selected by Scharizer agree remarkably well with his theory, but there are aluminous hornblendes whose constitution cannot be readily explained in this way and which at the same time cannot be referred to the pargasite orthosilicate.*

Garnet.—In the hand specimens the garnet is seen to possess a deep reddish-brown color. In the thin sections it is a paler brown although still deeply colored. It is not found in all parts of the mass and where it does occur is usually present only in small amount. It possesses the usual high index of refraction and is quite isotropic, occurring usually in irregular shaped grains but in some few cases showing distinct crystalline form. It frequently holds a few large inclusions which usually consist of calcite in single individuals, although the garnet is perfectly fresh and the calcite shows no distinct evidence of a secondary origin. It moreover sometimes holds inclusions of the hornblende above described, of pyrite, iron ore and even of nepheline. A garnet resembling this occurs in small amount associated with a similar hornblende, as above mentioned, in the nepheline-syenite of the Corporation Quarry at Montreal, and it also contains as inclusions most of the other constituents of the rock. The same is also true of the melanite in the nepheline-syenite of Alnö.†

Before analysis the garnet was purified by several separations with fused silver nitrate and on careful examination with the microscope the grains appeared to be entirely free from foreign matter. With the pycnometer their specific gravity at 16° C. was found to be 3.739. Chemical analysis gave the following results:

Silica	36.604
Titanium dioxide	1.078
Alumina	9.771
Ferric oxide	15.996
ferrous oxide	3.852
Manganous oxide	1.301
Lime	29.306
Magnesia	1.384
Loss on ignition285
	<hr/>
	99.577

The atomic and quantivalent ratios deduced from the above analysis are as follows:

* See Scharizer's paper, loc. cit., p. 156.

† "Ueber das Nephelinsyenitgebiet auf der Insel Alnö," von A. G. Högbom. Geol. Fören. i. Stockholm Förh., 1895, p. 144.

	Atomic.	Quantivalent.
Si	610 × 4 = 2440	} 2492 2492
Ti	13 × 4 = 52	
Al	192 × 3 = 576	} 1176
Fe ^{III}	200 × 3 = 600	
Fe ^{II}	53 × 2 = 106	
Mn	18 × 2 = 36	} 2466
Ca	523 × 2 = 1046	
Mg	35 × 2 = 70	} 1290
H	32	

The ratio for RO : R₂O₃ : (SiTi)C₂ is 629 : 196 : 623, or, calculating the titanium as Ti₂O₃, 629 : 203 : 610 = 3 : 1 : 3. The analysis therefore accords well with the ordinary garnet formula 3RO, R₂O₃, 3SiO₂ or R₂^{II}R₂^{III}Si₃O₁₂, and the mineral may be regarded as a titaniferous andradite, with a considerable proportion of the ferric oxide replaced by alumina. In composition it resembles somewhat the brown garnet from the Island of Stokö, analyzed by Lindström.*

By way of comparison the analysis of the Stokö garnet and also one of a garnet from the nepheline-syenite of the Island of Alnö† are included in the following table.

Stokö.		Molec. R.		Alnö.		Molec. R.		Dungannon.		Molec. R.	
SiO ₂	26.63	610	610	31.15	519	} 603	36.604	610	} 623		
TiO ₂	---	---	---	6.73	84		1.078	13			
Al ₂ O ₃	9.97	98	} 182	3.14	31	} 180	9.771	96	} 196		
Fe ₂ O ₃	13.45	84		23.83	180		15.996	100			
FeO	2.28	32	} 698	---	---	} 616	3.852	53	} 645		
MnO63	9		.58	8		1.301	18			
CaO	35.90	641	} 698	33.44	597	} 616	29.306	523	} 645		
MgO28	7		---	---		1.384	35			
Na ₂ O	---	---	} 9	.68	11	} 616	---	---	} 645		
Ign.16	9		---	---		.285	16			
99.30				99.55				99.577			

* Zeitschr. für Kryst. u. Min., xvi, 160, 1890.

† Sahlbom, in the paper by Högbom already cited.

or,
: 3.
rnet

may
able
om-
the

and
land

e. R.

623

196

645

