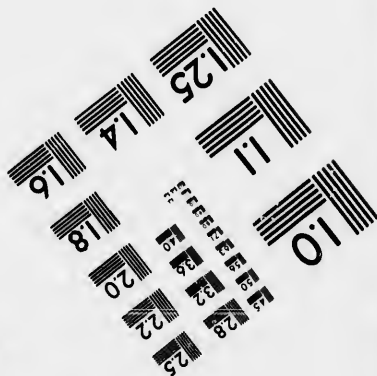
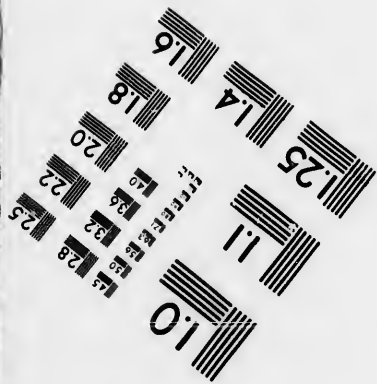
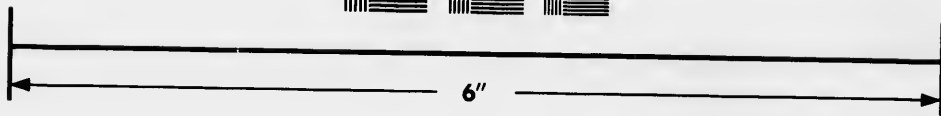
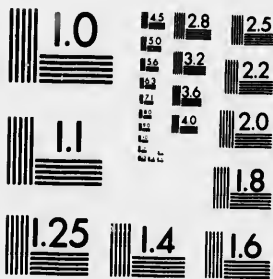


**IMAGE EVALUATION
TEST TARGET (MT-3)**



**Photographic
Sciences
Corporation**

23 WEST MAIN STREET
WEBSTER, N.Y. 14580
(716) 872-4503

LE 28 25
E 22
S 22
S 20
1.8

**CIHM
Microfiche
Series
(Monographs)**

**ICMH
Collection de
microfiches
(monographies)**



Canadian Institute for Historical Microreproductions / Institut canadien de microreproductions historiques

11
10
01

© 1993

Technical and Bibliographic Notes / Notes techniques et bibliographiques

The Institute has attempted to obtain the best original copy available for filming. Features of this copy which may be bibliographically unique, which may alter any of the images in the reproduction, or which may significantly change the usual method of filming, are checked below.

L'Institut a microfilmé le meilleur exemplaire qu'il lui a été possible de se procurer. Les détails de cet exemplaire qui sont peut-être uniques du point de vue bibliographique, qui peuvent modifier une image reproduite, ou qui peuvent exiger une modification dans la méthode normale de filmage sont indiqués ci-dessous.

Coloured covers/
Couverture de couleur

Coloured pages/
Pages de couleur

Covers damaged/
Couverture endommagée

Pages damaged/
Pages endommagées

Covers restored and/or laminated/
Couverture restaurée et/ou pelliculée

Pages restored and/or laminated/
Pages restaurées et/ou pelliculées

Cover title missing/
Le titre de couverture manque

Pages discoloured, stained or foxed/
Pages décolorées, tachetées ou piquées

Coloured maps/
Cartes géographiques en couleur

Pages detached/
Pages détachées

Coloured ink (i.e. other than blue or black)/
Encre de couleur (i.e. autre que bleue ou noire)

Showthrough/
Transparence

Coloured plates and/or illustrations/
Planches et/ou illustrations en couleur

Quality of print varies/
Qualité inégale de l'impression

Bound with other material/
Relié avec d'autres documents

Continuous pagination/
Pagination continue

Tight binding may cause shadows or distortion along interior margin/
La reliure serrée peut causer de l'ombre ou de la distorsion le long de la marge intérieure

Includes index(es)/
Comprend un (des) index

Blank leaves added during restoration may appear within the text. Whenever possible, these have been omitted from filming/
Il se peut que certaines pages blanches ajoutées lors d'une restauration apparaissent dans le texte, mais, lorsque cela était possible, ces pages n'ont pas été filmées.

Title on header taken from: /
Le titre de l'en-tête provient:

Title page of issue/
Page de titre de la livraison

Caption of issue/
Titre de départ de la livraison

Masthead/
Générique (périodiques) de la livraison

Additional comments: /
Commentaires supplémentaires:

This item is filmed at the reduction ratio checked below/
Ce document est filmé au taux de réduction indiqué ci-dessous.

10X	12X	14X	16X	18X	20X	22X	24X	26X	30X	32X
					/					

The copy filmed here has been reproduced thanks to the generosity of:

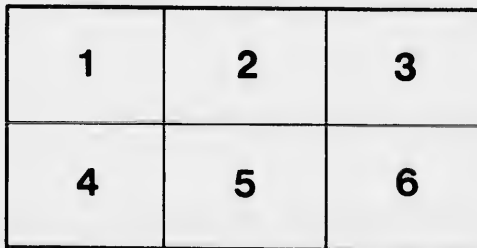
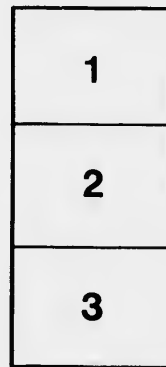
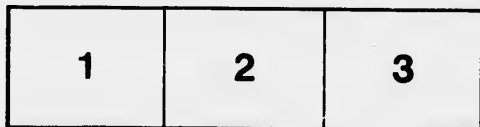
Bibliothèque nationale du Québec

The images appearing here are the best quality possible considering the condition and legibility of the original copy and in keeping with the filming contract specifications.

Original copies in printed paper covers are filmed beginning with the front cover and ending on the last page with a printed or illustrated impression, or the back cover when appropriate. All other original copies are filmed beginning on the first page with a printed or illustrated impression, and ending on the last page with a printed or illustrated impression.

The last recorded frame on each microfiche shall contain the symbol \rightarrow (meaning "CONTINUED"), or the symbol ∇ (meaning "END"), whichever applies.

Maps, plates, charts, etc., may be filmed at different reduction ratios. Those too large to be entirely included in one exposure are filmed beginning in the upper left hand corner, left to right and top to bottom, as many frames as required. The following diagrams illustrate the method:



L'exemplaire filmé fut reproduit grâce à la générosité de:

Bibliothèque nationale du Québec

Les images suivantes ont été reproduites avec le plus grand soin, compte tenu de la condition et de la netteté de l'exemplaire filmé, et en conformité avec les conditions du contrat de filmage.

Les exemplaires originaux dont la couverture en papier est imprimée sont filmés en commençant par le premier plat et en terminant soit par la dernière page qui comporte une empreinte d'impression ou d'illustration, soit par le second plat, selon le cas. Tous les autres exemplaires originaux sont filmés en commençant par la première page qui comporte une empreinte d'impression ou d'illustration et en terminant par la dernière page qui comporte une telle empreinte.

Un des symboles suivants apparaîtra sur la dernière image de chaque microfiche, selon le cas: le symbole \rightarrow signifie "A SUIVRE", le symbole ∇ signifie "FIN".

Les cartes, planches, tableaux, etc., peuvent être filmés à des taux de réduction différents. Lorsque le document est trop grand pour être reproduit en un seul cliché, il est filmé à partir de l'angle supérieur gauche, de gauche à droite, et de haut en bas, en prenant le nombre d'images nécessaire. Les diagrammes suivants illustrent la méthode.

108
G

~~10809714~~
~~G 333~~

THE
INTERIOR
OF
GESU

CHURCH OF ST.

SACRAMENT

INDIANA

Stouffer

134 GREAT ST. JAMES STREET

~~P. 3. 09714~~

~~G 335~~

INTERIOR

OF THE

“GESU”

MONTREAL.



Montreal:

PRINTED BY LOUIS PERRAULT & Co., 134 ST. JAMES STREET

1869

P

1947
MAY 15 1947

NA

5247

M615 IC

FS

fi

le
P
he
w
th

fi
th
L
se
in
of
S

ce
lu
th
op
lo
si
ar
be

G
in

THE GESU.

GERSONS visiting the Gesu are frequently at a loss to understand the beautiful frescoes with which this splendid church is adorned. To remedy this inconvenience, the following short description has been written in the hope that entering into the meaning of these frescoes, the hearts of the beholders will be inflamed to greater love for Him in whose honour this splendid temple has been erected.

The Gesu forms a perfect Cross : we shall therefore consider the five divisions of this Cross.

I. THE HEAD OF THE CROSS.

The head of the Cross is formed by the sanctuary. (It is needless to observe that the High Altar as well as the Side Altars and Pulpit are only temporary : when means permit, the Jesuit Fathers hope to place suitable altars, but at present, the very heavy debt with which this church is burdened, prevents their completing it as they could desire.)

Over the High Altar is a beautiful fresco representing the Crucifixion of our Lord. Higher up, the centre-piece is a scene from the Apocalypse, the four and twenty Elders are prostrate before the Lamb that was slain,—the Lamb is reclining upon the book with seven seals : on either side are Angels with thuribles, offering incense, the emblem of the prayers of the faithful. On the ceiling of the sanctuary, the shepherds are seen adoring the new-born Saviour.

II. THE CENTRE OF THE CROSS.

Against the four large columns which support the ceiling in the centre of the Cross, are statues of the four Evangelists, bearing lustres with seven branches, emblematic of the sevenfold gifts of the Holy Ghost. Near the Pulpit is St. Mark with a lion ; at the opposite corner of the sanctuary, St. Matthew with an ox ; at the lower corner on the pulpit side, St. Luke with a child ; and opposite, St. John with an eagle. An allusion is here made to the four animals seen in a vision by the Prophet Ezechiel ; they have always been considered as emblematic of the four Evangelists.

On the ceiling over this central part of the Cross, are the initial Greek letters of the most Holy Name of Jesus, I.H.S., the long E in Greek being formed like an English H.

III. THE LOWER PART OF THE CROSS.

Descending the nave and looking up at the ceiling, we see the incredulous Apostle St. Thomas, on his knees acknowledging the reality of our Lord's Resurrection. Next, a Lamb whose blood is flowing into a cup, typical of the Lamb slain for our salvation, whose blood is contained in the cup or chalice upon our altars. Then, we have a pelican, the emblem of immortality and self-sacrificing love. Over the organ-loft is the Virgin nursing the divine Child, whilst Angels round about are discoursing music on various stringed-instruments. Under the organ-loft and on the ceiling of the lower gallery is seen the royal prophet St. David playing on the harp. On both sides of the Nave are medallions representing saints of the Society of Jesus. Those on the pulpit side descending towards the door, represent St. Aloysius Gonzaga, S. J., the special patron of youthful students; St. Stanislaus Kostka, S. J., bearing in his arms the Child Jesus, since he was permitted to embrace the divine Infant in an apparition of the Blessed Virgin to him; Bl. John Berchmans, S. J., lately beatified by the reigning Pontiff, Pope Pius IX, and who sanctified himself amid the simple routine of a college life; finally, Bl. Alphonsus Rodriguez, S. J., the holy Brother Coadjutor, porter of Majorca College.

On the opposite side, going up the nave, we have medallions of Bl. Peter Claver, S. J., the Apostle to the negroes in S. America, and beatified 16 years ago; Bl. Ignatius d'Azevedo, S. J., the superior of a band of forty Jesuit missionaries, martyred by the Calvinists on their way to Brazil; Bl. Peter Canisius, S. J., called the Apostle of Germany, and St. Francis de Girolamo, S. J., missionary at Naples.

IV. THE LEFT ARM OF THE CROSS.

Over the Bl. Virgin's Altar is a fresco representing the Eternal Father and Jesus Christ the heavenly King holding a crown, whilst the Holy Ghost under the form of a dove is hovering over the crown prepared in heaven for that spotless, matchless Virgin, Daughter of the Father, Mother of the Son and Spouse of the Holy Ghost.

Turning to the left is a beautiful painting—the first communion of St. Aloysius Gonzaga. The celebrant at the altar is another canonized Saint, the great St. Charles Borromeo, Cardinal Archbishop of Milan. The father and mother of the young saint are present at this heavenly banquet.—On the right of this painting is a fresco representing St. Ignatius of Loyola in the Grotto of Manresa, wherein he wrote his celebrated book of the "Spiritual Exercises," under the guidance of the Bl. Virgin. The fresco on the left shows

forth an apparition to St. Ignatius a few miles from Rome. Our Lord appeared to him, carrying his Cross and said: "*I will be favorable to thee in Rome.*" With our Blessed Lord was the Eternal Father represented in the fresco with an orb surmounted by a Cross.

Above the painting, the central fresco shows us Our Lord blessing children. "Suffer little children to come unto me, and forbid them not, for of such is the Kingdom of heaven." On the right and left are guardian Angels with their wards.—In the centre of the ceiling we have the Child Jesus at the age of twelve years, sitting in the Temple in the midst of the Doctors, asking and answering questions, so that all present were astonished at His wonderful wisdom.

Over the arch in front of the Virgin's altar is a medallion of St. Ignatius of Loyola, Founder of the Society of Jesus; opposite to it, over the smaller organ is one of St. Francis Borgia, S. J., formerly Duke of Gandia and Vice-Roy of Catalonia.

Behind this organ is a fresco representing the martyrdom of two Canadian Missionaries, Fathers Brebeuf and Lallemand, S. J., put to death for their faith more than two centuries ago, in Canada by the Iroquois Indians.

The Left Arm of the Cross forms the Students' Chapel.

IV. THE RIGHT ARM OF THE CROSS

Crossing over to the pulpit side, we find St. Joseph's Chapel. To the left of this chapel and alongside of the sanctuary is the Purgatorian Altar, whereon masses are frequently said for the eternal repose of the holy suffering souls in Purgatory. "It is a wholesome and pious thought to pray for the dead that they may be released from their sins."

Over St. Joseph's Altar is a fresco representing the Eternal Father seated on his throne, while Angels are unfolding a scroll with these words: "Ited Joseph—Go to Joseph:" words addressed by the Egyptian King to those who came to him for relief in the time of the great famine. As Joseph, son of Jacob, was the great steward of King Pharaoh, so Joseph, spouse of Mary, is the steward of the most High, being placed by Him as Guardian of His adorable Son Jesus, and of Jesus' Spotless Mother the ever Blessed Virgin.

Above the arch in front of this altar is a medallion of St. Francis Xavier, S. J., the Apostle to the Indies; opposite this medallion is one of St. John Francis Regis, S. J., an apostolic missionary in France. His tomb is still held in great veneration at La Louvesc, and numerous miracles attest his credit with Almighty God.

Turning to the right is a very beautiful painting of the youthful St. Stanislaus Kostka, S. J., receiving communion from the hands

of an Angel. On the left of this painting is a fresco representing the three Japanese Martyrs, SS. Paul, John and James, S. J. These holy Martyrs were crucified for the Faith in company with several others at Nangasaki in Japan. On the right of the painting is another fresco representing the Martyrdom of Bl. Andrew Bobola, S. J., who was put to death for the Faith by the Cossacks in Poland.

Over the painting, the central fresco represents the raising of Lazarus from the dead. On the left we have the good father receiving back his prodigal son; and on the right, the good shepherd bringing back on his shoulders the lost sheep.

On the ceiling is the Holy Family at work; the child Jesus is helping his foster-father St. Joseph to saw a piece of wood; near by is the Immaculate Virgin Mother engaged with the distaff. On the wall opposite St. Joseph's altar, is a fresco representing the martyrdom of Bl. John de Britto, S. J., put to death in Marava.

Besides the frescoes we have described, there are several minor ones which scarcely need explanation.

The Church of the Gesù is attached to St. Mary's College, and both belong to the Jesuit Fathers. The opportunity of acquiring a knowledge of the French language whilst pursuing their course of studies, has induced many persons from the other provinces of the Dominion, and from the U. States to send their sons and wards to this college.

The Gesù, in the opinion of many, the most beautiful temple erected to God in the Northern portion of America, has been built at considerable expense. A very heavy debt still remains to be paid. The Jesuit Fathers will feel grateful to all who will become their benefactors by helping to relieve them of this heavy burden of debt.

"He who gives to the poor, lends to the Lord." The Fathers of this Church are truly poor. Lend to the Lord; there can be no better security.

—

A. M. D. C.

PROSPECTUS

OF

ST. MARY'S COLLEGE,

MONTREAL.

This College is conducted by the Jesuit Fathers.

The Course of Instruction is divided into two sections, the Classical and the Commercial.

The Classical Course embraces the Greek, Latin, English and French languages ; Rhetoric, Poetry, Elocution, History, Geography, Mathematics, Chemistry, Astronomy, Natural and Mental Philosophy.

The Commercial Course comprises the English and French languages, English Literature, Elocution, History, Geography, the use of Globes, Book-keeping, Arithmetic and whatever else may fit a young man for commercial pursuits.

There are, moreover, Elementary Preparatory Classes for younger students.

To be received into the College, applicants coming from another Institution, must present a certificate of good character.

Monthly reports of behaviour, application and progress, are sent to parents or guardians.

Boarders are not allowed to go to town more than once a month ; they should be accompanied by their parents or persons representing them.

None but relations or those who represent them, are allowed to visit the boarders.

The collegiate year is of ten months, beginning on the 1st Wednesday in September, and ending on the 1st Wednesday in July.

At Christmas there is a recess of a few days for those who have given full satisfaction in a serious examination on all the matters previously explained.

TERMS FOR THE COLLEGIATE YEAR.

Board and Tuition	\$150 00
Washing,	15 00
Bed and Bedding,	7 50
Music Lessons, { on Piano,	27 00
{ on Violin,	22 00
Drawing Lessons,	15 00
Library,	1 00
—	
Half Boarders,	70 00
Day School,	30 00
—	

Payments, which are required in *gold*, or its equivalent, and *strictly in advance*, are made in the beginning of September, on December 10th and March 20th.

The College will not take charge of providing a student with clothing or other necessaries unless a sufficient sum be deposited in the hands of the treasurer.

No reduction in the above mentioned terms will be granted for absence of less than one month.

S
T
Ott
is p
and
T
Bra
acc
T
atte

T
wee
The
char
B

St
L

ACADEMY

OF THE

SACRED HEART

SAULT-AU-REUILLET

This Institution is situated on the banks of a tributary of the Ottawa about six miles from Montreal. The surrounding scenery is picturesque, the air salubrious, the recreation grounds extensive, and water for bathing plentiful.

The plan of Education embraces all the useful and ornamental Branches requisite for forming Young Ladies to the virtues and accomplishments becoming to their sex.

The Government is maternal ; physical health receives assiduous attention, and morals are vigilantly superintended.

TERMS :

The scholastic year is divided into two Sessions of twenty-two weeks each, and Pupils will not be received for less than a Session. They can, however, be admitted at any time of the year and their charges will date from their entrance.

Board and Tuition, in English and French for the Scholastic year of ten months (<i>always payable half yearly in advance, in gold or in the paper money of Canada</i>)	\$150.00
Stationery and use of Books for classes	10.00
Lessons on the Organ or Harmonium	50.00
“ “ Piano from Master	50.00

Lessons on the Piano from Mistress	40.00
“ “ Harp “ “	50.00
“ “ Guitar “ “	24.00
“ “ Vocal Music “	24.00
Private Lessons in Vocal Music	48.00
Drawing in Crayon, Water Colors, &c.	24.00
Painting in Oil “ “	48.00
Languages (except English and French) each	24.00
Artificial Flowers “ “	32.00
Washing, if done at the Academy	16.00
Bedding, when furnished by the Establishment	10.00

All letters addressed to the Institution must be prepaid.

Physician's visits will be charged to the Parents.

The young Ladies will receive visits only on Thursday, Pupils remaining during the Summer vacation will be charged at the same rates.

Each pupil should be furnished with a white and a black bobinet veil, two dresses for uniform, one black and one white, twelve toilet towels, twelve table napkins, knife and fork, table and dessert spoon, silver cup, a work-box and a dressing-case.

Those who furnish their bedding must have a straw bed and mattress, the necessary pillows, sheets, blankets, etc., and a white counterpane.

Each pupil, at her entrance, will pay \$5.00 for the use of desk, bedstead, &c.

No deduction will be made should a pupil be withdrawn before the expiration of the term.

The convent will not take charge of providing a pupil with clothing or other necessaries unless a sufficient sum be deposited in the hands of the treasurer.

40.00
50.00
24.00
24.00
48.00
24.00
48.00
24.00
32.00
16.00
10.00

Pupils
at the
obinet
twelve
lessert
ed and
white
desk,
before
l with
posited

ST. MARY'S CONVENT

HOCHELAGA, MONTREAL.

This Institution, directed by the Sisters of the Holy Names of Jesus and Mary, is pleasantly situated in the vicinity of Montreal, and commands a beautiful view of the City, as well as of the St. Lawrence, and surrounding country.

A new and commodious Building has been erected, in an improved style, for the purpose of bestowing every attention on the moral and intellectual culture of their pupils, as well as upon their domestic comfort. The religious principles of the young ladies entrusted to their care are guarded with unremitting solicitude.

THE COURSE OF STUDY embraces the various branches of a solid, useful, and ornamental education.

The system of discipline is mild, but firm and uniform; while every encouragement, and every laudable incentive is employed to forward the pupils in knowledge and virtue.

Pupils of every religious denomination are admitted, and no interference is made with their religious convictions; they are, however, required to conform to the general rules of the Institution.

The ~~SCHOLASTIC~~ YEAR, comprising ten months and a half, opens on the first Monday of September, and ends about the middle of July.

There is an additional charge of \$20.00 for those who spend the vacation at the Academy.

TERMS :

	Per annum, half yearly in advance
Board and Tuition	(gold) \$100.00
Music	24.00
Drawing and Painting	10.00
Washing	12.00
Bed and Bedding, if furnished by the Institution	6.00
Books and Stationery	4.00

The uniform, which is worn only on Sundays and Thursdays, consisting of a pink muslin de laine dress for summer, a deep crimson merino dress for winter, and a black apron, can be supplied by the Institution, and paid for in advance.

Parents residing at a distance will please furnish sufficient funds to purchase such clothes as may be required, also materials for Drawing, Fancy Works, &c.

Each pupil should also be provided with a toilet-box, a work-box, a knife, a fork, spoons, and a gobelet, six changes of linen, a dozen of towels, a black and a white tulle veil.

All letters are subject to the inspection of the Directress, and all books, before being allowed circulation, must be submitted to her supervision.

No deduction will be made for partial absence, or for withdrawal from the Institution before the expiration of a quarter.

um,
advance

00.00

24.00

10.00

12.00

6.00

4.00

rsdays,

p crim-

ilied by

t funds

ials for

a work-

linen, a

and all

to her

drawal

