

**CIHM
Microfiche
Series
(Monographs)**

**ICMH
Collection de
microfiches
(monographies)**



Canadian Institute for Historical Microreproductions / Institut canadien de microreproductions historiques

© 1996

Technical and Bibliographic Notes / Notes technique et bibliographiques

The Institute has attempted to obtain the best original copy available for filming. Features of this copy which may be bibliographically unique, which may alter any of the images in the reproduction, or which may significantly change the usual method of filming are checked below.

- Coloured covers /
Couverture de couleur
- Covers damaged /
Couverture endommagée
- Covers restored and/or laminated /
Couverture restaurée et/ou pelliculée
- Cover title missing / Le titre de couverture manque
- Coloured maps / Cartes géographiques en couleur
- Coloured ink (i.e. other than blue or black) /
Encre de couleur (i.e. autre que bleue ou noire)
- Coloured plates and/or illustrations /
Planches et/ou illustrations en couleur
- Bound with other material /
Relié avec d'autres documents
- Only edition available /
Seule édition disponible
- Tight binding may cause shadows or distortion
along interior margin / La reliure serrée peut
causer de l'ombre ou de la distorsion le long de
la marge intérieure.
- Blank leaves added during restorations may appear
within the text. Whenever possible, these have
been omitted from filming / Il se peut que certaines
pages blanches ajoutées lors d'une restauration
apparaissent dans le texte, mais, lorsque cela était
possible, ces pages n'ont pas été filmées.
- Additional comments /
Commentaires supplémentaires:

L'Institut a microfilmé le meilleur exemplaire qu'il lui a été possible de se procurer. Les détails de cet exemplaire qui sont peut-être uniques du point de vue bibliographique, qui peuvent modifier une image reproduite, ou qui peuvent exiger une modifications dans la méthode normale de filmage sont indiqués ci-dessous.

- Coloured pages / Pages de couleur
- Pages damaged / Pages endommagées
- Pages restored and/or laminated /
Pages restaurées et/ou pelliculées
- Pages discoloured, stained or foxed /
Pages décolorées, tachetées ou piquées
- Pages detached / Pages détachées
- Showthrough / Transparence
- Quality of print varies /
Qualité inégale de l'impression
- Includes supplementary material /
Comprend du matériel supplémentaire
- Pages wholly or partially obscured by errata
slips, tissues, etc., have been refilmed to
ensure the best possible image / Les pages
totalement ou partiellement obscurcies par un
feuilleton d'errata, une pelure, etc., ont été filmées
à nouveau de façon à obtenir la meilleure
image possible.
- Opposing pages with varying colouration or
discolourations are filmed twice to ensure the
best possible image / Les pages s'opposant
ayant des colorations variables ou des décolorations
sont filmées deux fois afin d'obtenir la
meilleure image possible.

This item is filmed at the reduction ratio checked below /
Ce document est filmé au taux de réduction indiqué ci-dessous.

10X	12X	14X	16X	18X	20X	22X	24X	26X	28X	30X	32X
							✓				

The copy filmed here has been reproduced thanks to the generosity of:

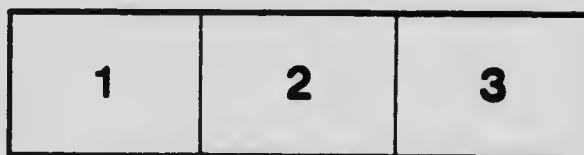
Stauffer Library
Queen's University

The images appearing here are the best quality possible considering the condition and legibility of the original copy and in keeping with the filming contract specifications.

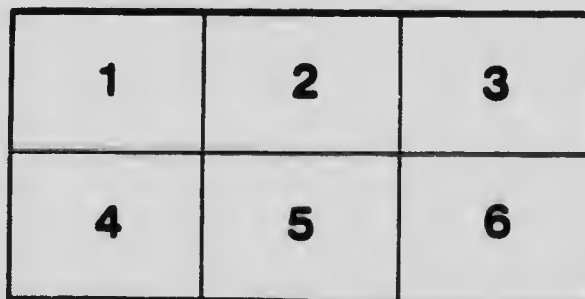
Original copies in printed paper covers are filmed beginning with the front cover and ending on the last page with a printed or illustrated impression, or the back cover when appropriate. All other original copies are filmed beginning on the first page with a printed or illustrated impression, and ending on the last page with a printed or illustrated impression.

The last recorded frame on each microfiche shall contain the symbol \rightarrow (meaning "CONTINUED"), or the symbol ∇ (meaning "END"), whichever applies.

Maps, plates, charts, etc., may be filmed at different reduction ratios. Those too large to be entirely included in one exposure are filmed beginning in the upper left hand corner, left to right and top to bottom, as many frames as required. The following diagrams illustrate the method:



:



L'exemplaire filmé fut reproduit grâce à la générosité de:

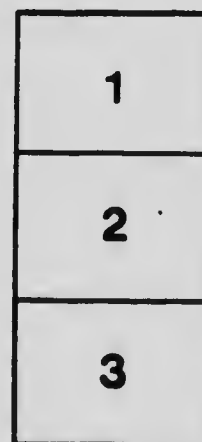
Stauffer Library
Queen's University

Les images suivantes ont été reproduites avec le plus grand soin, compte tenu de la condition et de la netteté de l'exemplaire filmé, et en conformité avec les conditions du contrat de filmage.

Les exemplaires originaux dont la couverture en papier est imprimée sont filmés en commençant par le premier plat et en terminant soit par la dernière page qui comporte une empreinte d'impression ou d'illustration, soit par le second plat, selon le cas. Tous les autres exemplaires originaux sont filmés en commençant par la première page qui comporte une empreinte d'impression ou d'illustration et en terminant par la dernière page qui comporte une telle empreinte.

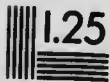
Un des symboles suivants apparaîtra sur la dernière image de chaque microfiche, selon le cas: le symbole \rightarrow signifie "A SUIVRE", le symbole ∇ signifie "FIN".

Les cartes, planches, tableaux, etc., peuvent être filmés à des taux de réduction différents. Lorsque le document est trop grand pour être reproduit en un seul cliché, il est filmé à partir de l'angle supérieur gauche, de gauche à droite, et de haut en bas, en prenant le nombre d'images nécessaire. Les diagrammes suivants illustrent la méthode.



MICROCOPY RESOLUTION TEST CHART

(ANSI and ISO TEST CHART No. 2)



1.5

1.5

1.5

1.5

1.5

1.5

1.5

1.5

1.5

1.5

1.5

1.5

1.5

1.5

1.5

1.5

1.5

1.5

1.5

1.5

1.5

1.5

1.5

1.5

1.5

1.5

1.5

1.5

1.5

1.5

1.5

1.5

1.5

1.5

1.5

1.5

1.5

1.5

1.5

1.5

1.5

1.5

1.5

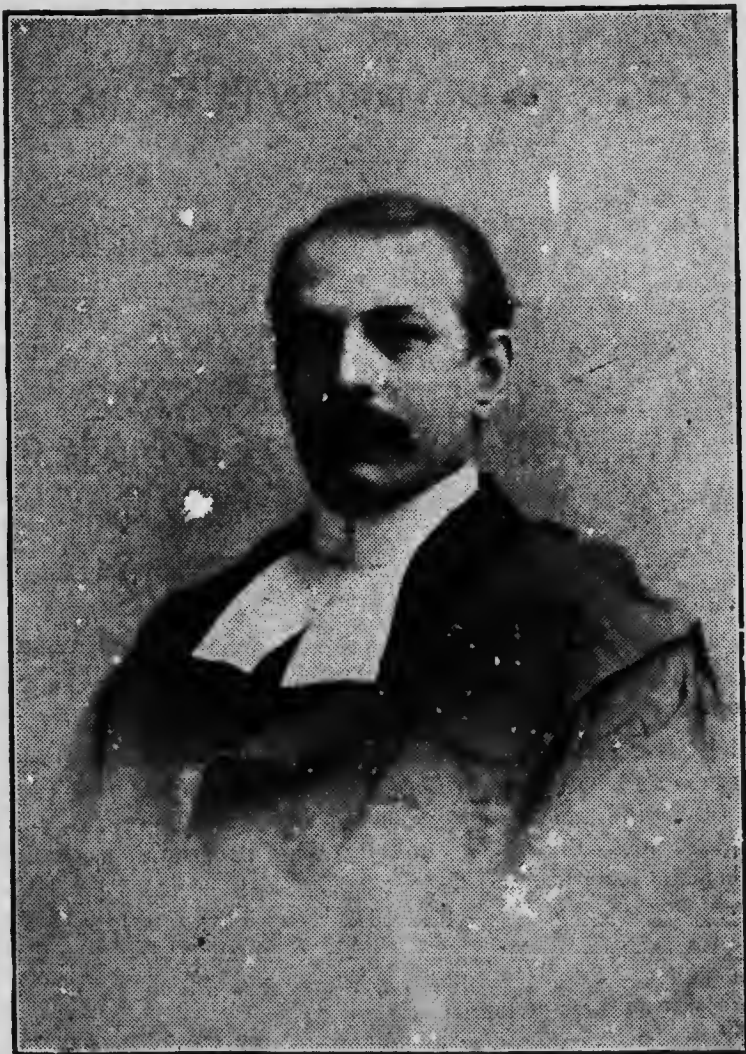


APPLIED IMAGE Inc

1653 East Main Street
Rochester, New York 14609 USA
(716) 482 - 0300 - Phone
(716) 288 - 5989 - Fax

[1908] Liberal

What the Laurier Government has done for Quebec



M. ARTHUR LACHANCE,
The futur member of Quebec-Center.

LPF 5012
1908
L695LW4

1207494

OVER \$15,000,000 IN 12 YEARS

AND AVERAGE OF \$1,250,000

**UNDER THE CONSERVATIVES, SAME
AVERAGE DID NOT EXCEED \$70,000**

Mr. Cimon and his friends keep repeating that Laurier has done nothing for Quebec."

In answer to that illy statement we will give a few figures which, although incomplete, are staring facts taken from the Public Accounts.

First, the principal amounts expended upon various Government works and buildings in Quebec and Levis for the past twelve years, not including the outlays on the Lower St. Lawrence, wharves, lights, new vessels, etc., and for their provisioning which so much benefits local trade.

1896-1897

Innigrant sheds..	\$ 3,430.00
Post office..	2,599.45
Indemnity to victims of landslide of 1889.	38,768.48
Military property..	20,000.00
Cartridge factory..	58,492.31
	<hr/>
	\$ 125,290.24

1897-1898

Drill Hall..	\$ 6,874.79
Post office..	3,242.13
Immigrant sheds..	4,157.12
Military property..	28,165.15
Cartridge factory..	72,832.45
	<hr/>
	\$ 115,291.64

1898-1899

Intercolonial station at Levis..	\$ 13,886.46
Citadel..	2,236.51
Custom House and Examining Warehouse	4,970.52
Post office..	4,942.39
Immigrant sheds..	4,908.71
Military property..	39,261.58
Cartridge factory..	80,134.94
	<hr/>
	\$ 150,341.11

1899-1900

Cartridge factory..	\$102,952.22
Intercolonial at Levis..	79,999.95
Citadel..	4,094.68
Custom House..	4,522.85
Immigrant sheds..	4,614.53
Post office..	7,123.50
Public works at Levis..	5,399.48
Military property..	63,953.30
	<hr/>
	\$ 272,860.51

1900-1901

Graving dock extension..	\$ 75,150.62
Levis Cattle Quarantine..	5,392.73
Rolling mill at Cartridge factory..	11,316.00
Citadel..	4,687.74
Custom House..	1,955.38
Immigrant sheds..	4,695.16
Dredging..	58,062.44
Graving dock..	8,767.27
Cartridge factory..	110,783.23
Intercolonial at Levis..	95,148.84
	<hr/>
	\$ 375,950.03

1901-1902

Federal Arsenal cartridge factory	\$207,61.	
Avalanche damages	250 00	
Quarantine at Levis	5,726.87	
Custom House	1,809.67	
Immigrant sheds	10,509.92	
Cartridge factory rolling mill	15,803.46	
New gun shop	16,518.05	
New foundry	1,364.02	
Intercolonial at Levis	75,341.09	
		<hr/> \$ 334,937.45

1902-1903

Federal Arsenal	\$149,998.20	
Military property (about)	60,000.00	
Immigrant sheds	2,044.85	
New foundry	20,360.46	
Gun shops	16,418.56	
Post office	3,556.61	
Intercolonial at Levis	93,597.16	
Quarantine at Levis	5,417.23	
		<hr/> \$ 351,393.07

1903-1904

Quarantine, Levis and Quebec	\$ 6,100.00	
Federal Arsenal	149,910.00	
Port of Quebec, improvement	68,349.00	
Immigrant building	1,991.00	
Immigrant hospital	12,000.00	
Marine store	750.00	
New shop, ordinance	2,967.00	
New iron foundry	1,051.00	
Post office	2,005.00	
Intercolonial at Levis	62,107.00	
Chaudière Junction	48,475.00	
		<hr/> \$ 355,603.00

1904-1905

Intercolonial at Levis	\$ 16,999.00
Quebec, Citadel	2,139.00
Quebec, Citadel	20,220.00
Immigrant building	12,063.00
Immigrant hospital	27,438.00

1904-1905

Marine stores	669.00	
Military buildings	3,609.00	
Observatory	1,282.00	
Post office	3,099.00	
Quarantine, Levis and Quebec	16,962.00	
Federal Arsenal	150,562.00	
Tablets under Citadel	1,250.00	
Chaudière Junction	34,623.00	
		\$ 290,915.00

1905-1906

Federal Arsenal	\$215,037.00	
Intercolonial at Levis	6,287.00	
Port of Quebec, improvements	197,000.00	
Citadel	6,563.00	
Custom House	14,317.00	
Immigrant hospital	20,842.00	
Military buildings	4,412.00	
Post office	3,140.00	
Military property	93,687.00	
		\$ 561,285.00

1906-1907

Quarantine, Levis and Quebec	\$ 24,852.00	
Federal Arsenal	224,401.00	
Port of Quebec, improvements	144,017.00	
Port of Quebec, on acct. loan	120,246.00	
Citadel	810.00	
Immigrant building	687.00	
Immigrant hospital	30,092.00	
Military buildings	478.00	
Military sheds	536.00	
Chaudière Junction	31,821.00	
		\$ 577,939.00

(Public Accounts for 1907-08 are not yet available.)

From the above, it is seen that the average for Quebec is about \$250,000 per annum, outside of over \$200,000 expended on the Champlain street cliff and under the Terrace, etc.

Secondly, the Harbor works, as follows:

In 1896, the Harbor Commissioners were authorized to borrow

\$350,000 on first mortgage bonds, the Government waiving its prior lien.

In 1906, the same authorization was given for a loan of \$800,000.

The Commissioners have so far spent \$950,000 in extension of railway lines, construction of sheds and wharves, purchase of cold storage, etc.

Outside of those \$950,000, the Commissioners still have on hand the sum of \$800,000, authorized in 1906, making a total of \$1,750,000.

Moreover, they have since 1896 spent a sum of \$800,000 for maintenance and operating purposes and interest. They have also guaranteed \$300,000 at 2 p. c. to ensure the construction of the Great Northern Elevator.

On the other hand, the Government has built the Breakwater extension, representing \$2,500,000, two thirds of which are completed. Moreover the Levis Graving Dock has been enlarged at a cost of \$200,000.

TO SUM UP :

Expended by the Harbor :

Capital account	\$ 950,000
Still on hand, to be spent	800,000
	<hr/>
	\$1,750,000
Revenue Account	800,000
	<hr/>

\$2,550,000

Expended by the Government since 1896 :

Levis Graving Dock	\$ 200,000
Breakwater extension (Dussault wharf)	2,500,000
	<hr/>

\$5,250,000

Plus miscellaneous works at Quebec as

above, over	\$3,000,000
Champlain Cliff and Terrace, over	200,000
Bridge, first subsidy	374,000
Bridge, loan on bonds	6,678,200
	<hr/>

\$15,502,200

The above does not include, of course, the St. Roch's Post Office, the rebuilding of the bridge, the Transcontinental Railway, and the Terminals soon to be built.

During the last seven years of the conservative administration, the average Government expenditure in Quebec city, did not exceed \$70,000 per annum, and nothing was being done to improve the Harbor, while the Laurier Government has expended an average of \$1,250,000 so far annually.

The electors of Quebec Centre owe a great debt of gratitude to sir Wilfrid Laurier and to their devoted member, Mr. Arthur Lachance, and they will show it on the 26th October.

Quebec 10th October, 1908.

