

**CIHM
Microfiche
Series
(Monographs)**

**ICMH
Collection de
microfiches
(monographies)**



Canadian Institute for Historical Microreproductions / Institut canadien de microreproductions historiques

© 1996

The Institut
copy availa
may be bibli
the image
significantl
checked bel

Colour
Couve

Covers
Couve

Covers
Couve

Cover

Colour

Colour
Encre

Colour
Flanch

Bound
Relié a

Only ed
Seule é

Tight b
along k
causer
la marg

Blank k
within t
been o
pages
appara
possible

Addition
Comme

This item is f
Ce document

10X



Technical and Bibliographic Notes / Notes technique et bibliographiques

The Institute has attempted to obtain the best original copy available for filming. Features of this copy which may be bibliographically unique, which may alter any of the images in the reproduction, or which may significantly change the usual method of filming are checked below.

- Coloured covers / Couverture de couleur
- Covers damaged / Couverture endommagée
- Covers restored and/or laminated / Couverture restaurée et/ou pelliculée
- Cover title missing / Le titre de couverture manque
- Coloured maps / Cartes géographiques en couleur
- Coloured ink (i.e. other than blue or black) / Encre de couleur (i.e. autre que bleue ou noire)
- Coloured plates and/or illustrations / Planches et/ou illustrations en couleur
- Bound with other material / Relié avec d'autres documents
- Only edition available / Seule édition disponible
- Tight binding may cause shadows or distortion along interior margin / Le reliure serrée peut causer de l'ombre ou de la distorsion le long de la marge intérieure.
- Blank leaves added during restorations may appear within the text. Whenever possible, these have been omitted from filming / Il se peut que certaines pages blanches ajoutées lors d'une restauration apparaissent dans le texte, mais, lorsque cela était possible, ces pages n'ont pas été filmées.
- Additional comments / Commentaires supplémentaires:

L'Institut a microfilmé le meilleur exemplaire qu'il lui a été possible de se procurer. Les détails de cet exemplaire qui sont peut-être uniques du point de vue bibliographique, qui peuvent modifier une image reproduite, ou qui peuvent exiger une modifications dans la méthode normale de filmage sont indiqués ci-dessous.

- Coloured pages / Pages de couleur
- Pages damaged / Pages endommagées
- Pages restored and/or laminated / Pages restaurées et/ou pelliculées
- Pages discoloured, stained or foxed / Pages décolorées, tachetées ou piquées
- Pages detached / Pages détachées
- Showthrough / Transparence
- Quality of print varies / Qualité inégale de l'impression
- Includes supplementary material / Comprend du matériel supplémentaire
- Pages wholly or partially obscured by errata slips, tissues, etc., have been refilmed to ensure the best possible image / Les pages totalement ou partiellement obscurcies par un feuillet d'errata, une pelure, etc., ont été filmées à nouveau de façon à obtenir la meilleure image possible.
- Opposing pages with varying colouration or discolourations are filmed twice to ensure the best possible image / Les pages s'opposant ayant des colorations variables ou des décolorations sont filmées deux fois afin d'obtenir la meilleure image possible.

This item is filmed at the reduction ratio checked below /
Ce document est filmé au taux de réduction indiqué ci-dessous.

	10X		14X		18X		22X		26X		30X	
	12X		16X		20X		24X		28X		32X	

/

The copy filmed here has been reproduced thanks to the generosity of:

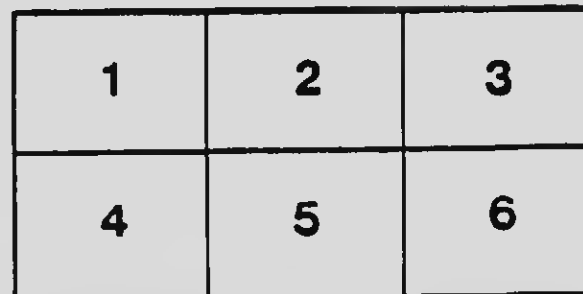
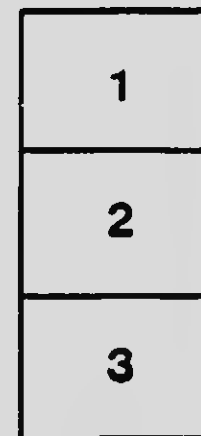
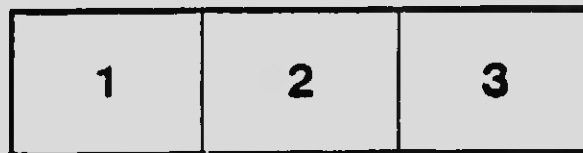
National Library of Canada

The images appearing here are the best quality possible considering the condition and legibility of the original copy and in keeping with the filming contract specifications.

Original copies in printed paper covers are filmed beginning with the front cover and ending on the last page with a printed or illustrated impression, or the back cover when appropriate. All other original copies are filmed beginning on the first page with a printed or illustrated impression, and ending on the last page with a printed or illustrated impression.

The last recorded frame on each microfiche sheet contains the symbol \rightarrow (meaning "CONTINUED"), or the symbol ∇ (meaning "END"), whichever applies.

Maps, plates, charts, etc., may be filmed at different reduction ratios. Those too large to be entirely included in one exposure are filmed beginning in the upper left hand corner, left to right and top to bottom, as many frames as required. The following diagrams illustrate the method:



L'exemplaire filmé fut reproduit grâce à la générosité de:

Bibliothèque nationale du Canada

Les images suivantes ont été reproduites avec le plus grand soin, compte tenu de la condition et de la netteté de l'exemplaire filmé, et en conformité avec les conditions du contrat de filmage.

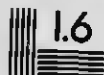
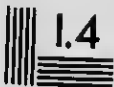
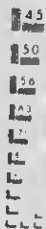
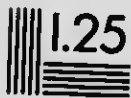
Les exemplaires originaux dont la couverture en papier est imprimée sont filmés en commençant par le premier plat et en terminant soit par la dernière page qui comporte une empreinte d'impression ou d'illustration, soit par le second plat, selon le cas. Tous les autres exemplaires originaux sont filmés en commençant par la première page qui comporte une empreinte d'impression ou d'illustration et en terminant par la dernière page qui comporte une telle empreinte.

Un des symboles suivants apparaît sur la dernière image de chaque microfiche, selon le cas: le symbole \rightarrow signifie "À SUIVRE", le symbole ∇ signifie "FIN".

Les cartes, planches, tableaux, etc., peuvent être filmés à des taux de réduction différents. Lorsque le document est trop grand pour être reproduit en un seul cliché, il est filmé à partir de l'angle supérieur gauche, de gauche à droite, et de haut en bas, en prenant le nombre d'images nécessaire. Les diagrammes suivants illustrent la méthode.

MICROCOPY RESOLUTION TEST CHART

(ANSI and ISO TEST CHART No. 2)



APPLIED IMAGE Inc

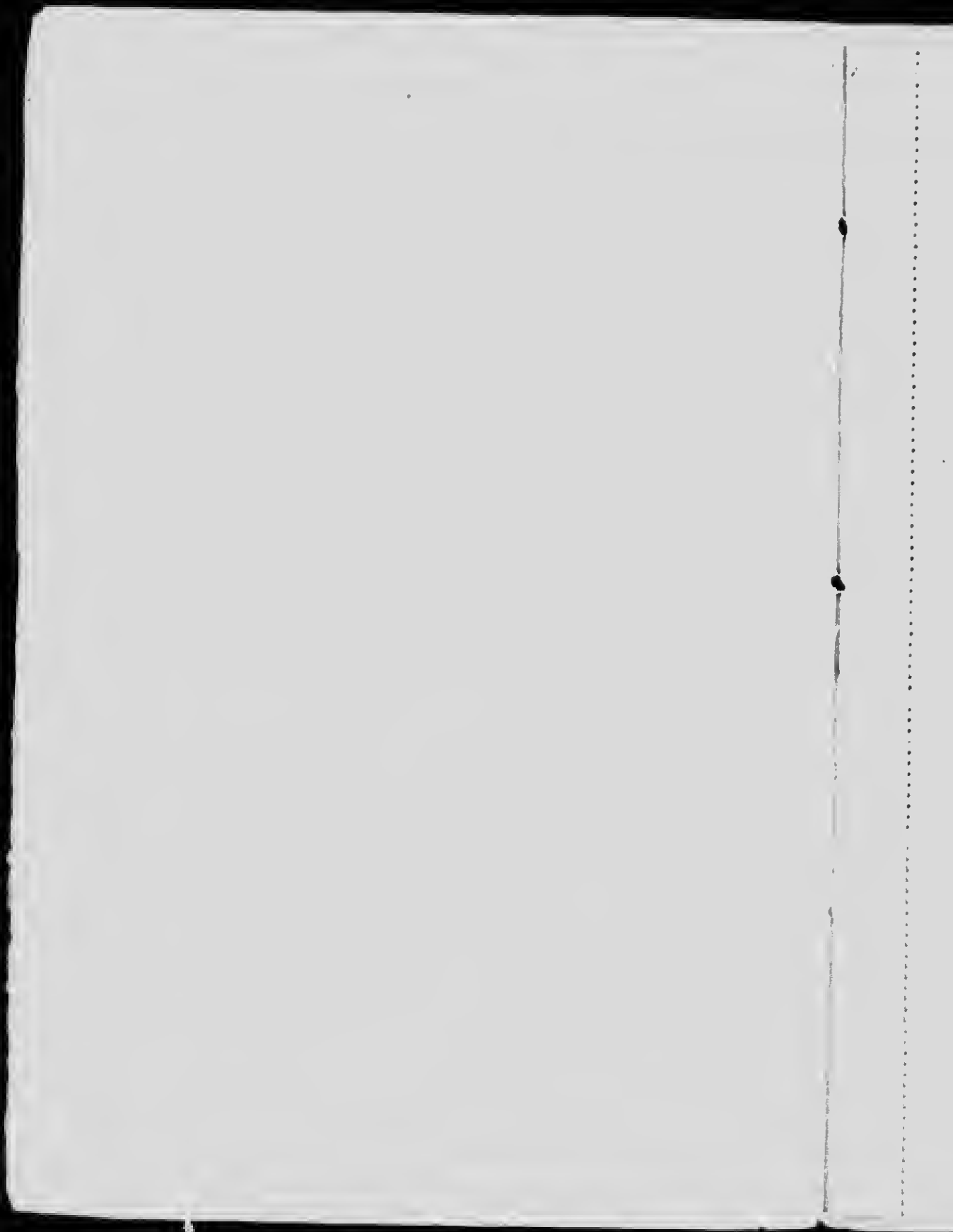
1653 East Main Street
Rochester, New York 14609 USA
(716) 482-0300 - Phone
(716) 288-5989 - Fax

NO. 1000
1918

*Visit to Canada
of
His Royal Highness
Prince Arthur of Connaught, K.G.*

*July - August
1918*

WILLIAM
CANADA



Visit to Canada
of
His Royal Highness
Prince Arthur of Connaught, K.G.

July - August
1918

PROGRAMME OF CANADIAN ITINERARY

JULY 22ND (MONDAY)

Arrive at Esquimalt.

Met by His Hon. the Lieutenant Governor (Sir Frank Barnard, K.C.M.G.), Brigadier General R. J. Gwynne, C.M.G., representative of Militia Department, and Captain R. O. Kenyon Slaney, A.D.C. to His Excellency the Governor General.

Proceed by motor to Government House, Victoria. Such of party as cannot be accommodated at Government House will stay at Empress Hotel.

JULY 23RD (TUESDAY)

Presentation of Provincial Address in morning.

Lunch, Government House.

Inspection of Troops.

JULY 24TH (WEDNESDAY)

Inspection of Military Hospital at Resthaven and Qualicum.

Return to Cowichan Lake for night by motor.

JULY 25TH (THURSDAY)

Spend day at Cowichan Lake.

Return to Victoria by motor.

Leave Victoria by boat at 11.40 p.m.

PROGRAMME OF CANADIAN ITINERARY

JULY 26TH (FRIDAY)

Arrive Vancouver	7.00 a.m.
Breakfast, Hotel.	9.00 a.m.
Inspection of Troops	11.00 a.m.
Lunch with G.O.C. District No. 11	1.00 p.m.
Inspection of Military Hospital	3.00 p.m.
Leave Vancouver	10.00 p.m.

PROGRAMME OF CANADIAN ITINERARY

JULY 27TH (SATURDAY)

Arrive Revelstoke 1.15 p.m.
Leave Revelstoke 6.00 p.m.

JULY 28TH (SUNDAY)

Arrive Banff.
Breakfast at C.P.R. Hotel.

JULY 29TH (MONDAY)

Remain Banff.
Commissioner of R.N.W.M.P. will provide horses.

PROGRAMME OF CANADIAN ITINERARY

JULY 30TH (TUESDAY)

Leave Banff 8.00 a.m.

Arrive Calgary 10.35 a.m.

Met by His Honour Dr. R. G. Brett, Lieutenant Governor

Presentation of Provincial Address.

Inspection of Hospitals.

Lunch, G.O.C. Military District No. 13
(Colonel G. Macdonald).

Inspection of Troops.

Leave Calgary 6.00 p.m.

PROGRAMME OF CANADIAN ITINERARY

JULY 31ST (WEDNESDAY)

Arrive Regina 11.00 ^a p.m.

Presentation of Provincial Address.

Stay at Government House.

(His Honour Sir Richard Lake, K.C.M.G., Lieutenant Governor.)

AUGUST 1ST (THURSDAY)

Inspection of Troops.

Inspection of Hospital.

Lunch, G.O.C. Military District No. 12.

Visit Headquarters R.N.W.M.P.

Leave 11.00 p.m.

PROGRAMME OF CANADIAN ITINERARY

AUGUST 2ND (FRIDAY)

Arrive Brandon 7.30 a.m.
Drive round district in motors.
Dr. H. P. Whidden, M.P., has made arrangements.
Leave 12.00 a.m.

PROGRAMME OF CANADIAN ITINERARY

AUGUST 2ND (FRIDAY)

Arrive Winnipeg 4.45 p.m.

Presentation of Provincial Address.

Stay at Government House.

(His Honour Sir James Aikins, Kt., Lieutenant Governor).

AUGUST 3RD (SATURDAY)

Inspection of Troops.

Lunch with G.O.C. (Brig. Gen. H. D. B. Ketchen, C.M.G.)

Inspection of Hospitals.

N.B.—MAJOR GENERAL JOHN HUGHES, Inspector General of Western Canada, has his headquarters at Winnipeg, and will meet H.R.H.

AUGUST 4TH (SUNDAY)

Attend Divine Service (special war service.)

Leave Winnipeg 9.00 p.m.

PROGRAMME OF CANADIAN ITINERARY

AUGUST 5TH (MONDAY)

Arrive Nipigon 3.00 p.m.

AUGUST 6TH

AUGUST 7TH

AUGUST 8TH (THURSDAY)

Leave Nipigon for Niagara Camp . . . 8.00 p.m.

PROGRAMME OF CANADIAN ITINERARY

AUGUST 10TH (SATURDAY)

Arrive Niagara-on-the-Lake before breakfast.

Breakfast on train.

Met by Colonel A. C. Caldwell, representative of Militia Department.

Inspection of Troops, including Poles.

Leave Niagara by motor for R.A.F. Camp, Beamsville, where luncheon will be served.

After inspection of Camp proceed by Motor Boat to Toronto.

Stay at Government House.

(His Honour Sir John Hendrie, K.C.M.G., C.V.O., Lieutenant Governor).

PROGRAMME OF CANADIAN ITINERARY

AUGUST 11TH (SUNDAY)

Inspection of Military Hospitals in afternoon.

AUGUST 12TH (MONDAY)

Receive Provincial Address.

Present Medals and Decorations to returned soldiers and next-of-kin.

Lunch, Government House.

Visit R.A.F., Leaside.

PROGRAMME OF CANADIAN ITINERARY

AUGUST 13TH (TUESDAY)

Leave Toronto 9.00 a.m.
Arrive London 1.10 p.m.
Lunch, G.O.C. Military District No. 1
Inspection of Troops.
Inspection of Hospitals.
Leave London 6.30 p.m.

AUGUST 14TH (WEDNESDAY)

Arrive Ottawa 8.00 a.m.
Proceed to Government House for Breakfast.



