

**CIHM
Microfiche
Series
(Monographs)**

**ICMH
Collection de
microfiches
(monographies)**



Canadian Institute for Historical Microreproductions / Institut canadien de microreproductions historiques

© 1996

Technical and Bibliographic Notes / Notes technique et bibliographiques

The Institute has attempted to obtain the best original copy available for filming. Features of this copy which may be bibliographically unique, which may alter any of the images in the reproduction, or which may significantly change the usual method of filming are checked below.

L'Institut a microfilmé le meilleur exemplaire qu'il lui a été possible de se procurer. Les détails de cet exemplaire qui sont peut-être uniques du point de vue bibliographique, qui peuvent modifier une image reproduite, ou qui peuvent exiger une modifications dans la méthode normale de filmage sont indiqués ci-dessous.

- Coloured covers / Couverture de couleur
- Covers damaged / Couverture endommagée
- Covers restored and/or laminated / Couverture restaurée et/ou pelliculée
- Cover title missing / Le titre de couverture manque
- Coloured maps / Cartes géographiques en couleur
- Coloured ink (i.e. other than blue or black) / Encre de couleur (i.e. autre que bleue ou noire)
- Coloured plates and/or illustrations / Planches et/ou illustrations en couleur
- Bound with other material / Relié avec d'autres documents
- Only edition available / Seule édition disponible
- Tight binding may cause shadows or distortion along interior margin / La reliure serrée peut causer de l'ombre ou de la distorsion le long de la marge intérieure.
- Blank leaves added during restorations may appear within the text. Whenever possible, these have been omitted from filming / Il se peut que certaines pages blanches ajoutées lors d'une restauration apparaissent dans le texte, mais, lorsque cela était possible, ces pages n'ont pas été filmées.
- Additional comments / Commentaires supplémentaires:

- Coloured pages / Pages de couleur
- Pages damaged / Pages endommagées
- Pages restored and/or laminated / Pages restaurées et/ou pelliculées
- Pages discoloured, stained or foxed / Pages décolorées, tachetées ou piquées
- Pages detached / Pages détachées
- Showthrough / Transparence
- Quality of print varies / Qualité inégale de l'impression
- Includes supplementary material / Comprend du matériel supplémentaire
- Pages wholly or partially obscured by errata slips, tissues, etc., have been refilmed to ensure the best possible image / Les pages totalement ou partiellement obscurcies par un feuillet d'errata, une pelure, etc., ont été filmées à nouveau de façon à obtenir la meilleure image possible.
- Opposing pages with varying colouration or discolourations are filmed twice to ensure the best possible image / Les pages s'opposant ayant des colorations variables ou des décolorations sont filmées deux fois afin d'obtenir la meilleure image possible.

This item is filmed at the reduction ratio checked below /
Ce document est filmé au taux de réduction indiqué ci-dessous.

	10x		14x		18x		22x		26x		30x	
	12x		16x		20x		24x		28x		32x	

(Note: A checkmark is present in the 22x box of the second row.)

The copy filmed here has been reproduced thanks to the generosity of:

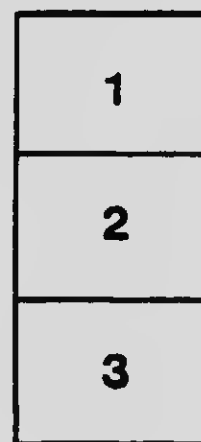
National Library of Canada

The images appearing here are the best quality possible considering the condition and legibility of the original copy and in keeping with the filming contract specifications.

Original copies in printed paper covers are filmed beginning with the front cover and ending on the last page with a printed or illustrated impression, or the back cover when appropriate. All other original copies are filmed beginning on the first page with a printed or illustrated impression, and ending on the last page with a printed or illustrated impression.

The last recorded frame on each microfiche shall contain the symbol \rightarrow (meaning "CONTINUED"), or the symbol ∇ (meaning "END"), whichever applies.

Maps, plates, charts, etc., may be filmed at different reduction ratios. Those too large to be entirely included in one exposure are filmed beginning in the upper left hand corner, left to right and top to bottom, as many frames as required. The following diagrams illustrate the method:



L'exemplaire filmé fut reproduit grâce à la générosité de:

Bibliothèque nationale du Canada

Les images suivantes ont été reproduites avec le plus grand soin, compte tenu de la condition et de la netteté de l'exemplaire filmé, et en conformité avec les conditions du contrat de filmage.

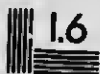
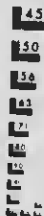
Les exemplaires originaux dont la couverture en papier est imprimée sont filmés en commençant par le premier plat et en terminant soit par la dernière page qui comporte une empreinte d'impression ou d'illustration, soit par le second plat, selon le cas. Tous les autres exemplaires originaux sont filmés en commençant par la première page qui comporte une empreinte d'impression ou d'illustration et en terminant par la dernière page qui comporte une telle empreinte.

Un des symboles suivants apparaîtra sur la dernière image de chaque microfiche, selon le cas: le symbole \rightarrow signifie "A SUIVRE", le symbole ∇ signifie "FIN".

Les cartes, planches, tableaux, etc., peuvent être filmés à des taux de réduction différents. Lorsque le document est trop grand pour être reproduit en un seul cliché, il est filmé à partir de l'angle supérieur gauche, de gauche à droite, et de haut en bas, en prenant le nombre d'images nécessaire. Les diagrammes suivants illustrent la méthode.

MICROCOPY RESOLUTION TEST CHART

(ANSI and ISO TEST CHART No. 2)



APPLIED IMAGE Inc

1653 East Main Street 14609 USA
Rochester, New York
(716) 482 - 0300 - Phone
(716) 288 - 5989 - Fax

OTTAWA CANADA



THE
GREAT CHEAP
POWER
CITY

POPULATION INCLUDING SUBURBS 128,000

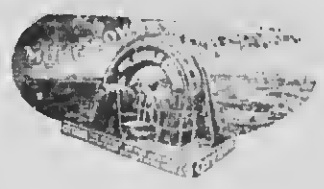


OTTAWA CANADA

The Great Cheap Power City

...ILLUSTRATED BY...

The Publicity and Industrial
Bureau



—Manufacturers—

CAPITALISTS, FINANCIERS
AND EVERYBODY

will be furnished with further, and more specific
information promptly and gratuitously upon request.

HERBERT W. BAKER.

Telephone 1787.
City Hall.

Commissioner.

JANUARY, 1912.

10-11
1-11
1-11
1-11

THE CAPITAL CITY OTTAWA CANADA

Presents a combination of greater advantages and economic facilities for the location of industries than any other place in Canada—

FOR THESE REASONS:

- Cheapest Power.
- Raw Materials Convenient.
- Splendid Industrial Sites.
- Advantageous Freight Rates.
- Rail and Water Transportation.
- Comparative Low Cost of Living.
- Most Favorable Labor Conditions.
- Population of 4,127,000 living within 300 miles.
- Direct and Quickest Haul to Western Markets.

INVESTIGATE !

Ask for Special Reports.



OTTAWA, CANADA.—CITY HALL.

OTTAWA, CANADA



NORTH CENTRAL VIEW
from CITY HALL

CITY OF OTTAWA

ENTERPRISING. PROGRESSIVE.

Area	Acres	5,205
Population		90,568
Including Suburbs		128,000

and is increasing rapidly.

OTTAWA HAS

5 Daily Newspapers.		
8 Weekly Publications.		
8 Water Transport Lines.		
11 Steam Railway Lines.		
12 Public Parks—237 acres.		
19 Government Buildings.		
22 Charitable Institutions.		
32 Miles Driveway.		
36 Banks.		
47 Miles Street Railway.		
62 Hotels.		
67 Churches.		
72 Restaurants and Cafes.		
77 Educational Institutions (53 free schools).		
107 Wholesale Houses.		
109 Miles of Sewers.		
149 Miles of Streets.		
151 Miles of Water Mains.		
Bank Clearances	1910	\$195,752,033.18
“ “	1911	211,767,153.64
Customs	1910	1,258,788.31
“ “	1911	1,632,777.64
Building Permits	1910	3,022,650.00
“ “	1911	3,425,775.00
Public Improvements	1910	756,000.00
“ “	1911	812,000.00
Gross Assessment	1910	86,529,000.00
“ “	1911	105,833,800.00
Increase in valuations	1911	19,304,800.00





OTTAWA, CANADA.—North-east View From Victoria Museum.

Ottawa, Canada

The City of Ottawa—Capital of the Dominion of Canada—nestles snugly in a veritable forest of heavily foliated soft maple and other trees, on high cliffs, overlooking the Ottawa river, and commands a magnificent view of varied scenery, combining mountain, river and vale, indescribable for beauty and grandeur. The Laurentian chain to the north: to the east and west, the Ottawa and Rideau Rivers and Rideau canal, the Rideau river emptying into the Ottawa river over most beautiful twin falls.

The City of Ottawa is particularly noted for its magnificent architecture. The Parliamentary and other government and public buildings, and a large number of private homes, constructed of splendid native stone and brick, are elaborate and striking in design, as well as in the appointment of beautiful grounds.

OTTAWA is abundantly provided with playgrounds, beautiful parks, picturesque driveways, shady avenues and splendid boulevards. There are 237 acres in playgrounds and park lands in the city limits, and about 2,000 acres natural park lands immediately adjacent to the city.





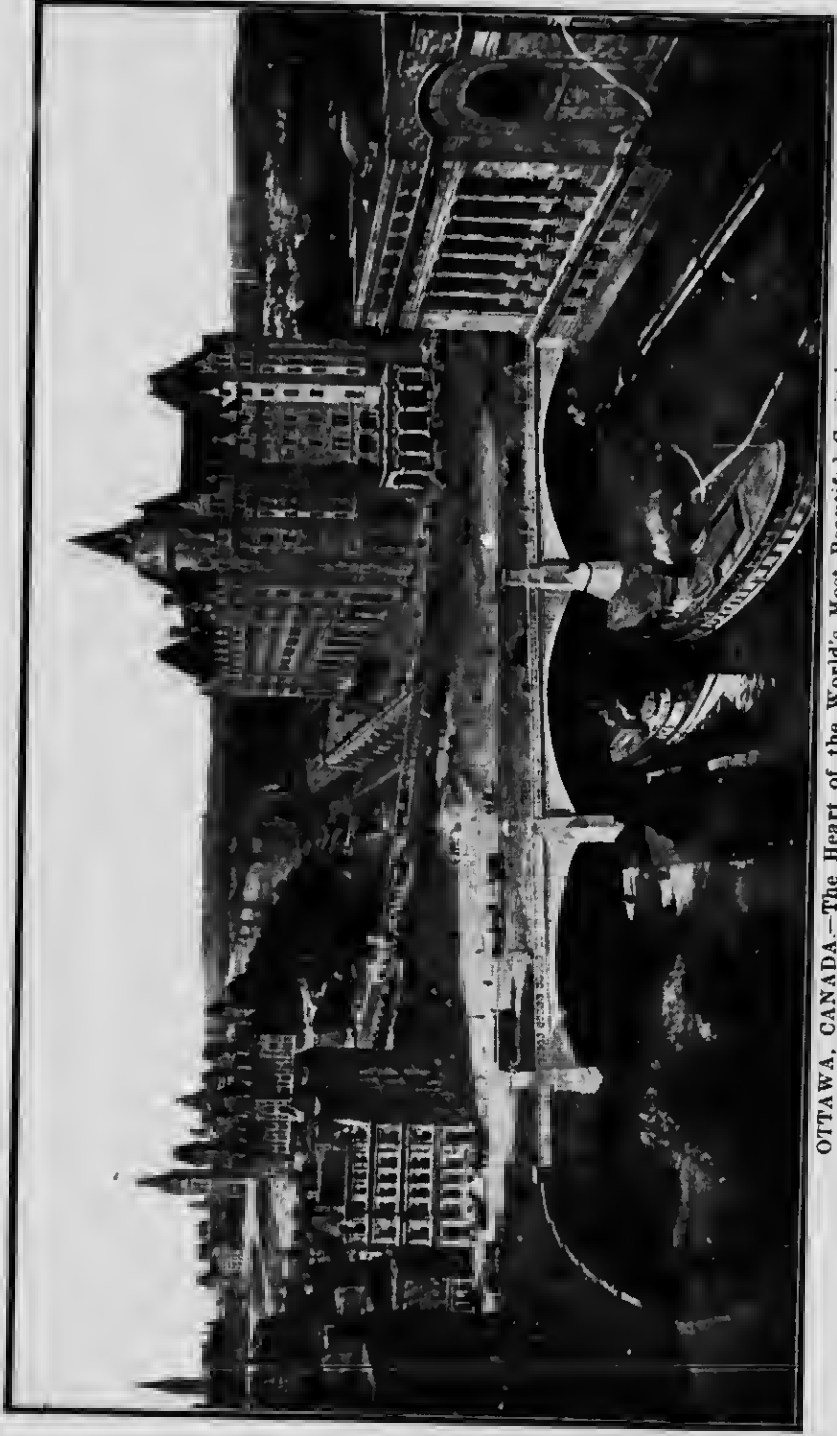
OTTAWA, CANADA.—Principal Street Scenes.

OTTAWA is the best lighted city on the Continent of North America.
OTTAWA is a city of magnificent homes and mammoth industries.
OTTAWA holds annually the greatest ICE horse race meet in the world.
OTTAWA provides **POWER** and **LABOR** on more favorable terms than any city in Canada.



OTTAWA, CANADA.—Prominent Corners, Elgin and Sparks Streets.





OTTAWA, CANADA.—The Heart of the World's Most Beautiful Capital.

Ottawa, Canada

SPECIAL OPPORTUNITIES FOR THE MANUFACTURER AND CAPITALIST.

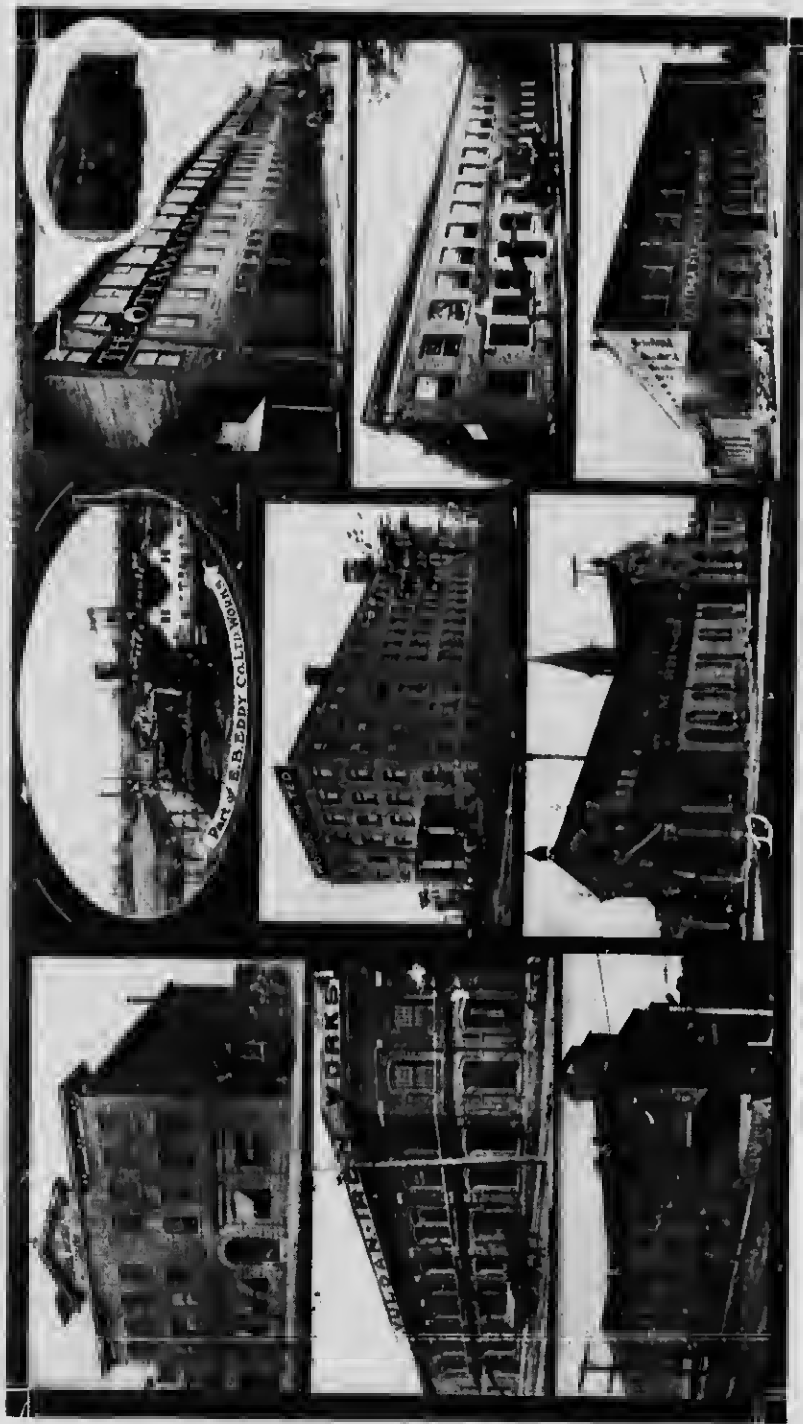
Ottawa offers many glowing opportunities at the present time for the establishment of industries of various kinds and particularly for the manufacture of the following lines:—

Automobiles, Boxes, Bags, Biscuits, Barrels, Bottles, Clothing, Cigars, Confections, Cereal Foods, Elevator and Mill Building Machinery and Materials, Furniture, Flour, Gloves, Oatmeal, Paper, Paperwares, Pottery, Roller Mill Products, Rubber and Felt Goods, Shirts and Collars, Shoes, Steel Castings, Tiles, Textiles, Woodenwares.

Special Reports will be furnished promptly on any of above lines of industry upon request.

On opposite page (10) will be seen a view of the Parliament Buildings, Rideau Locks, Chateau Laurier, Post Office, Plaza Laurier, Grand Trunk Central Station, Rideau Canal, Grand Trunk Railway, Canadian Pacific Railway.





OTTAWA, CANADA.—Industries pounding away—night and day.



OTTAWA, CANADA.—Other Industries Under Full Blast.



OTTAWA, CANADA.—Water Powers in the City Limits. The Reason for the CHEAPEST POWER in Canada.

Advantageous and Economic Facilities

Manufacturing and Distributing

OTTAWA offers a combination of greater advantages and economic facilities for the successful and profitable operation of industries of various kinds than any other city in Canada.

CHEAPEST POWER AND LIGHT IN CANADA.

Light—4c. per 100 sq. feet, per month, of area lighted, and 3c. per k.w. for current consumed—including lamps and meter—less 10%, 15 days.

Power—Hydro-Electric, over 100 h.p. down to 1-5 h.p., \$9.80 per h.p. to \$22.50 per h.p. per annum, net, including meter and transformer, and delivered to consumer's motor.

POWER IN ABUNDANCE.

Ottawa consumes about 75,000 h.p., and has available over 25,000 h.p. when required—generated in the very heart of the city.

Within 50 miles, there is available, undeveloped, 1,000,000 hydraulic h.p., low water estimate.

Ottawa has more power available for commercial purposes than Niagara, and
AT LESS COST.





RIDEAU CANAL

*PORT OF GAND TOWN R. &
NEW YORK CENTRAL RY. YARDS*

*Portion of
CAN. PAC. YARDS*

OTTAWA, CANADA.—Transportation Facilities.

Transportation Facilities

Eleven Steam Roads enter the city; two others, and one electric line under construction; eight water lines.

Ottawa ranks second to no place in Canada, in transportation facilities.

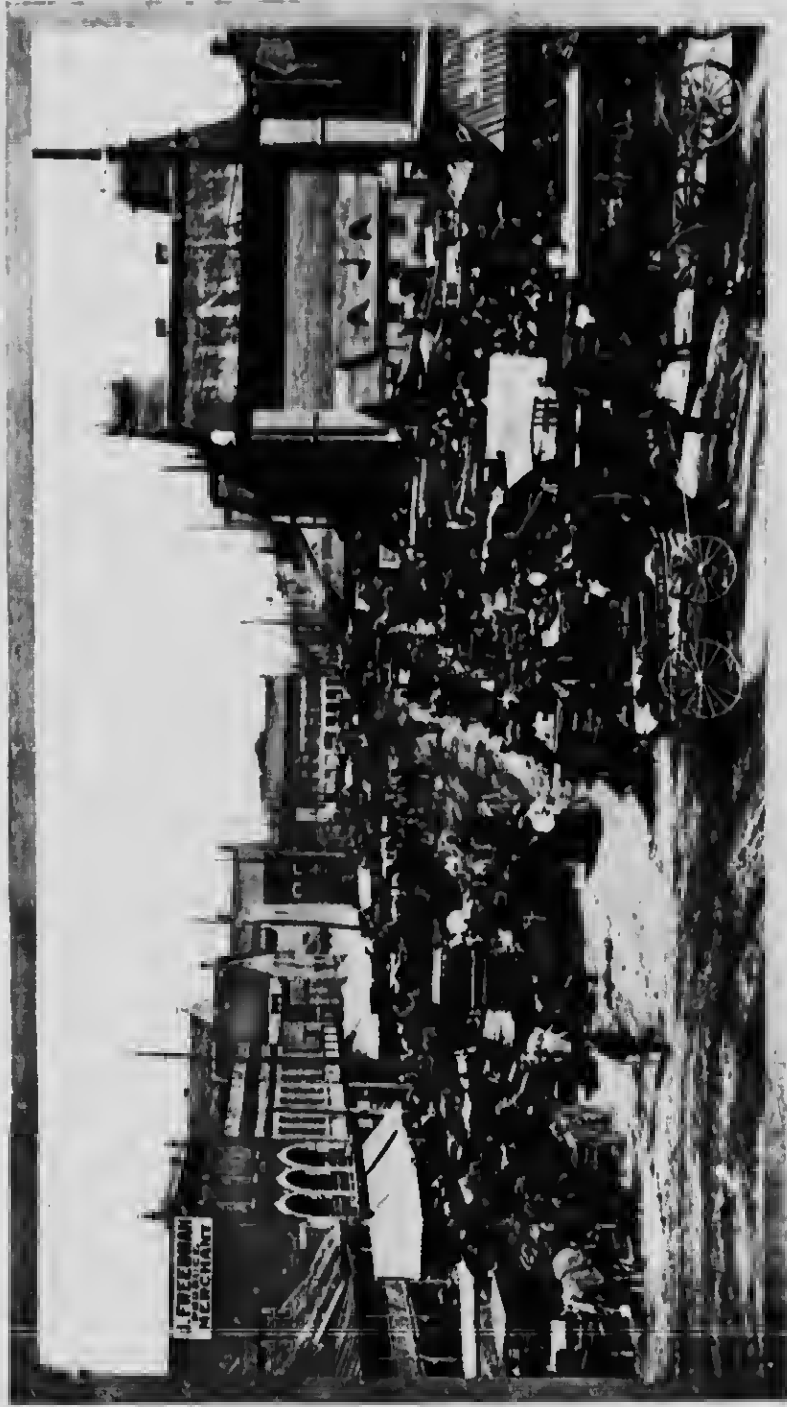
RAILWAYS—Grand Trunk, Canadian Pacific, Canadian Northern, New York Central.

WATER LINES—Via Rideau Canal to the St. Lawrence and the Great Lakes, Ottawa and St. Lawrence Rivers to the Great Lakes, Montreal, and the Atlantic Seaboard.

FREIGHT RATES.

Freight rates from Ottawa to the great markets of Western Canada are identically the same per class, per cwt., as rates from Toronto, Hamilton, London, Woodstock, Welland, Windsor, Walkerville and other industrial centres of Ontario, and with the advantage of one-half to two days quicker service from Ottawa to western points, by reason of direct haul (see Ry. map of Canada) without transshipment, as is necessary on consignments of freight from points not on the main line of the only **THREE** transcontinental railway lines.

On eastbound and export traffic, Ottawa, of course, has the advantage, in both rates and time, over all other Ontario and Western Canadian cities, by reason of location and more direct lines and transportation facilities between this point, the Atlantic ocean and the United States.



OTTAWA, CANADA. The Public Market. Pure Food at Comparatively Low Cost. Consumers purchase direct from Producers.

RAW MATERIALS.

Woodworking, paper-making, and for kindred industries, raw materials are available in the city and within easy access.

Timber and other materials abound throughout the district: Ash, Beech, Basswood, Birch, Barite, Corundum, Clay (brick, tile and pottery), Cedar, Elm, Granite, Iron, Hemlock, Limestone, Marble, Marl, Mica, Maple, Magnesite, Pent, Pine (red and white), Poplar, Phosphate, Water (good, soft, cold).

SPLENDID INDUSTRIAL SITES.

Splendid industrial sites, with trackage, are available—suitable, convenient, and comparatively cheap.

Some sites in city limits, with fixed assessment for 20 years with a variety of labor in the locality, await occupancy.

LABOR.

It is indisputable that more favorable labor conditions obtain in Ottawa than at any other industrial center in Canada. Nearly every class of labor is available, especially efficient female help. The situation in Ottawa is particularly free from strife.



A
BEAUTIFUL MODEL
HOME CITY



METCALFE ST. LOOKING NORTH



METCALFE ST. LOOKING SOUTH

OTTAWA.

CANADA.

OTTAWA, CANADA.—A Strictly High Class Residential District, one mile square, in the Heart of the City.

Home Life in Ottawa

Ottawa enjoys a delightfully vigorous, healthful climate—spring, summer, autumn and winter.

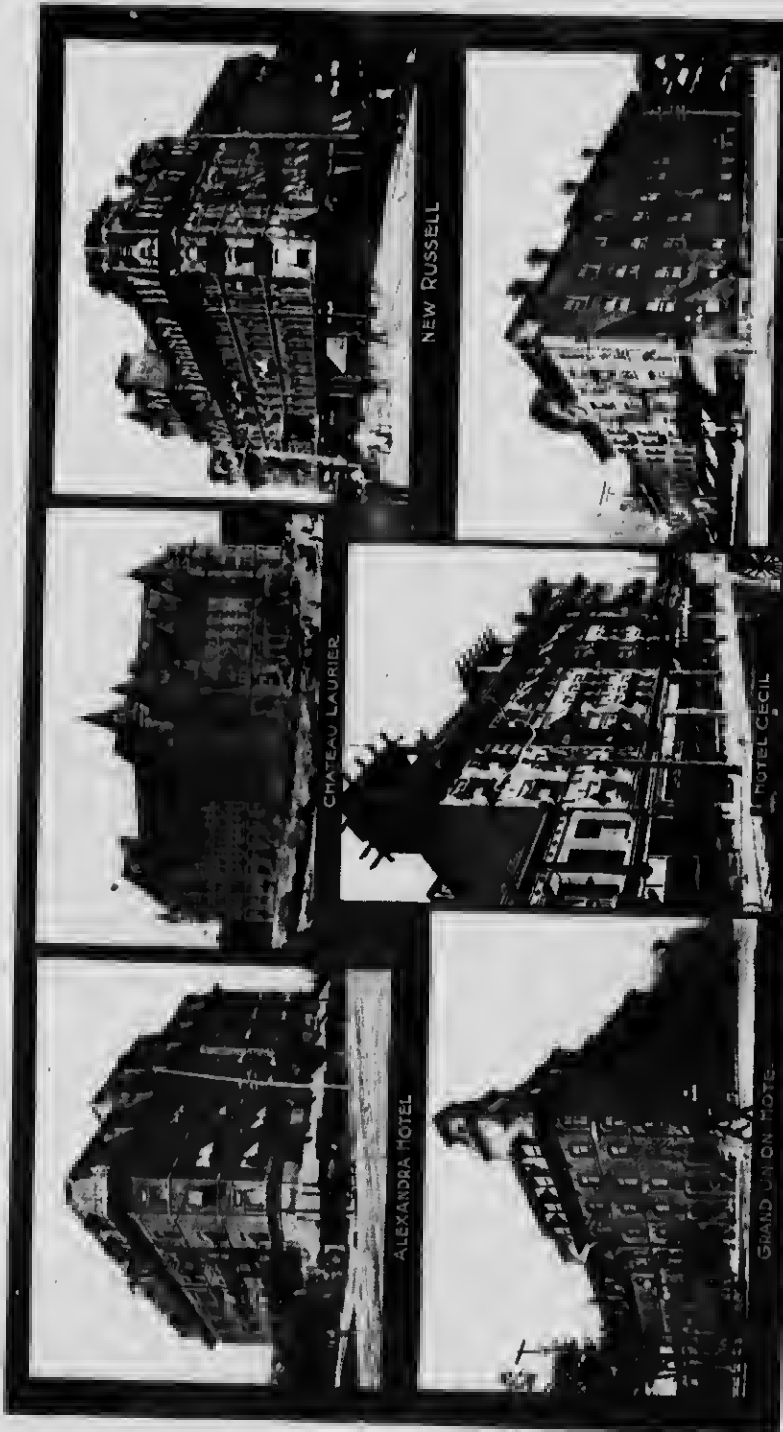
Notwithstanding the fact that some of the largest industries in the world are under full blast, and many additional important industries are pounding away in the city, Ottawa is a most cleanly, picturesque, charming and healthful home city.

The Capitalist and Manufacturer enjoy the advantages and benefits of the social centre of all Canada.

The Workingman finds conditions most congenial. There are no slums. Each laborer's little home, almost without exception, has a grassy plot in front, and sufficient ground for a garden in the rear.

Many houses, in good repair, are occupied at a monthly rental of from \$7.00 to \$15.00 per month, including water, while first class moderate houses may be rented throughout the city at \$22.50 to \$35.00 per month.

Parks, Play-grounds, Summer Resorts, Theatres, Schools, Public Libraries, Public Swimming Pools,—in fact every requisite is to be found in Ottawa which goes in the making of joys of living for those who toil.



OTTAWA, CANADA.—Some of the Capital's Prominent Hotels.

HOTEL ACCOMMODATION

Ottawa provides the best hotel accommodation of any Canadian city.

THE ALEXANDRA
American plan—117 rooms.
\$2.50 and up.

CHATEAU LAURIER
(Open June 1st, 1912).
European plan—350 rooms.
\$2.00 and up.

NEW RUSSELL
European plan—250 rooms.
\$1.00 to \$3.50 single.
\$2.00 to \$5.00 double.

GRAND UNION
American plan—125 rooms.
\$2.00 to \$2.50.

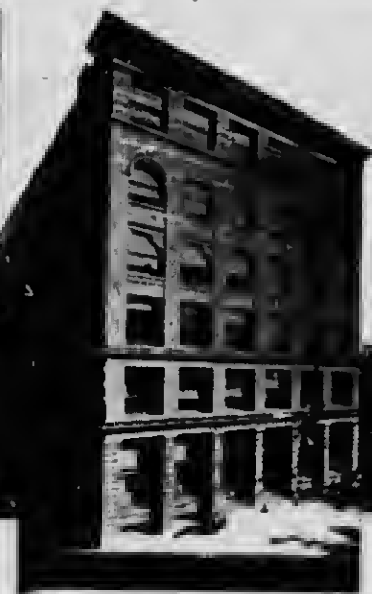
HOTEL CECIL
American plan—125 rooms.
\$2.50 and up.

WINDSOR HOUSE
American plan—125 rooms.
\$2.00 to \$2.50.
\$3.00 with bath.





OTTAWA, CANADA—Some Commercial Buildings. No plate



Buildings. No place in Canada is building better than the Capital City.



"Out Britannia Way"

Ottawa enjoys the most efficient street car service of any city on the continent. The cars are clean, comfortable and swift. The employees are neat, courteous and obliging. The traffic has grown from 10,500,000 passengers during 1905 to 19,379,475 this year. Ottawa is the only place in Canada where street car passengers may ride 14 miles for 3½ cents.

Ottawa enjoys several first class summer resorts, within easy distance by street car and train, with excellent bathing and fishing, and reasonable hotel rates.



Points of Interest:

(SPARKE STREET CAR LINE USED AS BASE OF DIRECTIONS)

Place.	Street Car Sign	Direction Bound
Archives	Rockcliffe Park	East.
Aylmer, Que.	Chaudiere Falls	West
Aylmer, Que.	Aylmer, at Dufferin Bridge.	
Britannia, Summer Resort	Britannia and Somerset.	West
Basilica	Rockcliffe Park	East.
City Hall (Elgin and Queen Sts.)	Elgin St.	East.
Court House, Nicholas St.	Bank and Laurier	East.
Cartier Square:—		
Drill Hall, Normal and Model		
School, Collegiate Institute....	Elgin St.	East.
Chaudiere Falls:—		
Booth's Paper, Cardboard and		
Lumber Mills; Eddy's Factoriee:		
Paper bags, fibreware, matches,		
woodenware, etc.; City Water		
Works Pump Station.....	Chaudiere Falls.....	West.
Central Depot:—		
G.T.R., C.P.R., N.Y.C. lines.....	All lines	East.
Can. Nor. Ry. Depot	Laurier Ave.	East.
Experimental Farm (460 acres)		
and Royal Observatory	Experimental Farm	West.
Govt. Fisheries Exhibit,	All cars to O'Connor and	
O'Connor and Queen Sts.	Sparks Streets.	
Govt. Printing Bureau	Rockcliffe Park	East.
Government House, "Rideau		
Hall"	Rockcliffe Park	East.
Hull	Chaudiere	West.
Parliament Buildings	All lines to Sparks & Metcalfe	
Public Library and Y.M.C.A.....	All lines to Sparks & Metcalfe	
Post Office and Plaza	All lines	East.
Protestant Hospital	All lines	East.
Royal Mint	Rockcliffe Park	East.
Royal Observatory	Experimental Farm	West.
St. Luke's Hospital	Elgin St.	East.
Union Depot (C.P.R.)	Union Depot Line	West.
Victoria Museum:—		
Geological Exhibit	Elgin St.	East.
Art Exhibit	Elgin St.	East.
Water St. General Hospital	Rockcliffe	East.
DRIVEWAY	ANY MOTOR BUS LINE.	

(See map of city, inside back cover).



OTTAWA, CANADA



PARLIAMENT BUILDINGS

OTTAWA has 19 Federal Government Buildings valued at \$22,675,000, giving employment to 4,895 people, and distributes about \$5,000,000 annually through payrolls—a PERMANENT ASSET—which no other city in Canada enjoys, an ASSET that is in no wise jeopardized by whatever unfavorable conditions may arise and prevail in other cities or districts in Canada.



OTTAWA, CANADA.—Major Hill Park, Rideau Locks, Parliament Hill, from Nepean Point.



OTTAWA, CANADA.—Parliamentary Library.
A Visit Worth a Trip Across the Ocean.

Ottawa has the National Victoria Museum, National Art Gallery, Government Archives, Parliamentary Library, Public Library, Royal Mint, Royal Observatory, Government Fisheries Exhibit, Central Canadian Experimental Farm (460 acres).

* * *

Ottawa sets the social pace for the whole of Canada and leads the world in athletic sports.



CONVENTION CITY

Ottawa has long since acquired the title of **CONVENTION CITY**.

More conventions of various natures are held each year in the Capital City than at any other place in Canada. Ottawa is happily situated so as to be of easy access and provides every convenience, comfort and pleasure for delegates.

There are many suitable buildings for meetings, all the principal railways of Canada center here, and the hotels furnish excellent service at reasonable cost.

**The Publicity and Industrial Bureau,
City Hall, Ottawa,**

will at all times render, gratuitously, every possible service in arranging hotel accommodation, meeting place and such details as will insure pleasant and successful conventions.

* * *

Ottawa is on the main line of the Grand Trunk Railway, Canadian Pacific Railway, Canadian Northern Railway, and is the Canadian terminal of the New York Central Railway line.

All trains between the Atlantic and Pacific seaboards, via the shortest route, pass through this city. (See time-distance map, back cover).



The City of Ottawa and district provide attractive and charming summer and winter resorts.

Nearby, and of easy access throughout the Ottawa Valley, along the wondrously beautiful Gatineau river and environs, are several good summer hotels.

The Ottawa river, Rideau lakes and Rideau canal provide many delightful little trips into this enchanting wonderland.





The district, of which Ottawa is the gateway, is a veritable sportsman's paradise. Here may be found every conceivable means of recreation, sport, pastime and health.

The great Chateau Laurier—the finest establishment of its kind on the continent—will be thrown open to the public June 1st, 1912. This, together with numerous other first-class hotels in the city, assure to particular people a comfortable, pleasant sojourn.



CITY OF OTTAWA

GEMS OF BEAUTY
ALONG THE DRIVEWAY &
THROUGH THE PARKS

OTTAWA. CANADA.—The Ottawa Improvement Commission is spending \$1,000,000.00. in the creation and beautification of Parks, Driveways and Boulevards.



OTTAWA, CANADA.—Scenes about the World's Most Beautiful Capital.



OTTAWA, CANADA.—A Section of Driveway and Britannia Park.



OTTAWA, CANADA.—The Driveway along Rideau Canal.

Ottawa, Canada

Ottawa has connection via the Rideau Canal and the Ottawa River with the St. Lawrence—creating one of the most delightful water trips in the country.

Ottawa has an abundant supply of good, soft, clear, cold water.

Ottawa is in close proximity, and provides easy access to some of the finest fishing and game resorts in Canada.

Ottawa is still the largest individual manufacturer of lumber in the world—the district output of 1911 aggregating 359,000,000 feet, board measure, with a monetary valuation approximating \$10,052,000.00.

Ottawa is on the route of the proposed Georgian Bay Canal and will share to the fullest possible extent in the tremendous volume of trade and commerce which this route is certain to develop, also divert from present United States channels to Canadian channels and bottoms.

Ottawa is noted for its excellent educational facilities, including Model and Normal schools, a Collegiate Institute, University, three good business colleges, 70 other private and public schools and colleges, with a daily average attendance of 26,700 pupils.





OTTAWA, CANADA.—Central Canada Exhibition.

Ottawa, Canada

PROSPEROUS, INDUSTRIOUS

Ottawa has three payrolls—Industrial, Governmental, and Railway, which, combined, distribute annually the enormous sum of \$14,930,200.00.

Ottawa is becoming, each year, more and more a great manufacturing centre.

Ottawa has now 176 live industries of various kinds, giving employment to about 16,500 persons—male and female—and paying out annually for services rendered, nearly \$8,000,000.00.

The total product of Ottawa industries is increasing appreciably, year after year, and for the year just closed is conservatively estimated at a monetary valuation of \$38,000,000.00.

* * *

Ottawa has the largest individual factories in the world producing Paper, Cardboard, Tents and Awnings, Marine Signals, and Cement.

* * *

Ottawa holds annually the best Industrial and Poultry Shows in Canada.



INDUSTRIAL OTTAWA

FACTORY PRODUCTS

Ales, art glass, ambulance waggons, automobiles, aerated waters, aluminum wares and castings, awnings, axes.

Brass work, bed springs, bank notes, baskets, bonds, blank books, boats, bank fixtures, brick, brooms, brushes, butter, boots, bags (paper), boxes (paper), boards (Beaver), bindings, blinds, babbitt metals, beer.

Canoes, cured meats, charcoal, cardboard, cabinets, carpets, carbide, cornicing, cigars, cement, carriages, clothing (men's and women's), car wheels, commercial motor cars, clothes wringers, castings, confections, cleansing preparations.

Dredge buckets, disinfectants, doors, dustless floor preparations, die sinkers.

Electric cars, electro plates, excelsior, electric irons, electric water heaters, electric plate warmers, electric grills, electric stoves, electric urns, electric bath heaters, electric glue pots, electric radiators, electric laboratory appliances, electric switch boxes, electric flat rate controlling devices (duplex).

Flooring, flare lights, furniture, furnaces, flour, feed, fire escapes, file metals, filing cabinets, fibre ware.

FACTORY PRODUCTS

Gas buoys, gun carriages, grille work, galvanized iron, ginger ale, gun metal.

Harness, heaters, hats, horse goods, hydro-electric power, hydrants, household specialties.

Iron boards, iron products, inside finishings, iron stairs, incubators.

Jewellery.

Lumber, leather goods, lime, lumbering tools, loose-leaf systems.

Motor boats, marine signals, machinery, moccasins, mattresses, matches, medicine, mica, metal dies, metal polish, metal roofing, mill machinery.

Office furniture, notions, ornamental glass, organs, oils.

Paints, porter, polish (shoe, stove and furniture), paper, pulp, portable houses, penstocks, packing house products, pressed steel goods, photo engravings, pianos, pails, pipe (water, steel rivetted).

Rugs, ranges, refrigerators, sawmill machinery, structural steel, sash, stationery, stoves, show cases, sleighs, siding, stamps, scales, steam engines, sheet metal, shirts, shirt waists.

Tiles, trunks, tub stands, taxicabs, toothpicks, tinware, tanks (iron and steel).

Valves, vinegar, violins, vacuum cleaners.

Waggons, washing machines, woollens, water wheels, woods (fireproof), willow ware, wood-
enwares.



INDUSTRIAL OTTAWA

Following is a list of the more important industries in operation, address and products:—

Name and Address.	Products
American Bank Note Co. 200 Wellington St.	Bank notes, bonds, stamps, etc.
Blackburn Bros. Dufferin Road.	Mica.
Brading Brewing Co. 451 Wellington St.	Ale, porter, beer.
British American Bank Note Co., 262 Wellington St.....	Bank notes, bonds, etc.
Butterworth Foundry Co..... Broad St.	Furnaces, stoves, ranges, heaters.
Breadner Mfg. Co. 1002 Somerset St.	Jewellery.
Beaver Co. Head St.	Paper boards (beaver), bindings, etc.
Booth, J. R. 82 Bridge St.	Paper, cardboard, pulp, lumber.
S. & H. Borbridge 38 Rideau St.	Moccasins, horse and leather goods.
Capital Brewing Co. 385 Wellington St.	Ales, porter, beer.
Crain, Rolla L. Co., Ltd. 174 Wellington St.	Blank books, printing, loose leaf systems.
Capital Press Sparks St.	Blank books, printing, etc.
Coplan, A. H. Co. Broad and Queen Sts.	Aluminum and brass castings.
Capital Boat & Canoe Works. 612 Bank St.	Boats, canoes, motor boats.
Continental Bag & Paper Co.. Wellington & Bridge Sts.	"Germ Proof" Paper Bags.



INDUSTRIES Continued.

Name and Address.	Products
Canada Cement Co. Gatineau Road, Hull.	Cement.
Carson, Hugh 45 Elgin St.	Harness, horse goods, leather goods, trunks.
Chaudiere Foundry Co. 84 Duke St.	Steam engines, waterwheels, castings, machinery.
Canadian Feather & Mattress Co., 288 Queen St.	Mattresses and bed springs
Connor, J. H. & Son. 10 Pretoria Ave.	Washing machines, clothes wringers, ironing boards and tub stands.
Canadian Mahogany Co. New Edinburgh.	Variety of woods, fireproof woods
Dey Bros. 6 Cunningham St.	Boats, canoes.
Dey, Edgar 612 Bank St.	Boats, canoes.
Dufour, Jos. 249 Rideau St.	Carrriages, waggons.
Duhamel, L. 107 Murray St.	Carrriages, waggons.
Dust-Less Mfg. Co. 421 Sussex St.	Dustless floor preparation.
Dominion Electric Co. 417 Sparks St.	Electric irons, water heaters, plate warmers, grills, stoves, urns, bath heaters, glue pots, laboratory appliances (heating), flat rate con. devices (duplex), radiators.
Dominion Plating Co. 117 Bank St.	Electro plates.
Davidson, James 2 Rochester St.	Sash, doors, refrigerators, boxes, blinds, portable houses, shooks, flooring, lumber, etc.
Eedale Press 278 Sparks St.	Blank books, printing, loose leaf systems, engraving, etc.
Edwards, W. C. Ltd. 25 Sussex St.	Flooring, lumber, sash, doors, interior finishings.



INDUSTRIES Continued.

Name and Address.	Products
Electric Bean Co. 226 Albert St.	Medicine.
Eclipse Mfg. Co. 72 Albert St.	Pressed steel goods.
Fleck, Alex. Ltd. 416 Wellington St.	Car wheels, castings, sawmill machinery.
Fruitatives Ltd. 386 Bank St.	Proprietary medicine.
Frazer, Wm. F. Catherine and Bronson.	Planting mill and factory.
Gilmour & Hughson Laurier Ave., Hull.	Lumber.
Hope, Jas. & Son. 18 Elgin St.	Blank books, stationery.
Hull Woodenware Co. Gatineau Road, Hull.	Toothpicks and small wooden-ware.
Hull Electric Power Co..... Main St., Hull.	Hydro-electric power.
International Marine & Signal Co., 743 Albert St...	Gas buoys, flare lights, iron and steel tanks, structural steel, steel bridges, fire escapes, penstocks for hydraulic power plants, steel rivetted water pipe, oblong steel whey tanks, panel board cabinets, electric switch boxes, marine signals.
Lawson, T. & Sons 376 Wellington St.	Brass, iron, hydrants, valves, aluminum, gun metals, fire escapes, water works castings, iron stairs, babbitt metals.
Lowe-Martin Co. Ltd. 228 Albert St.	Loose-leaf systems, blank books, printing, etc.
Library Bureau of Canada .. Isabella St.	Office furniture, bank fixtures, filing cabinets, inside finishing.



INDUSTRIES *Continued.*

Name and Address.	Products
Laurentian Foundry Co. 74 Ottawa St.	Furnaces, stoves, castings.
Laurentian Mica Co. 19 Main St., Hull.	Mica.
Leslie, J. & Sons 114 Scott St.	Thiawares.
Modern Machine Co. 343 Wellington St.	Brass work, iron and steel castings.
Mortimer Co. 259 Sparks St.	Blank books, printing, photo engraving, etc.
MacKenzie & Co. Cor. Albert and Lyon Sts.	Lumbermen's and contractor's clothing, tents, awnings.
McAuliffe-Davis Lumber Co., 29 Duke St.	Lumber.
Mason, Geo. M. Wellington & Bayswater.	Lumber, sash, doors, blinds, etc.
McFarlane & Douglas 350 Slater St.	Metal roofing, ceilings, siding, windows, cornicing, interlock- ing furniture finish, steel construction.
Matthews, Geo. Ltd. Gatineau Road, Hull.	Cured meats, packing house products.
Munsell, Eugene Mica Co., 400 Wellington St.	Mica.
Martin-Orme Piano Co. 330 Sparks St.	Pianos, organs.
National Mfg. Co. Lyon and Catherine Sts.	Steel stoves and ranges.
Ottawa Boat Works Echo Drive.	Boats, canoes, motor boats.
Ottawa Brick Mfg. Co. 53 Queen St.	Brick.
Ottawa Dairy Co. 393 Somerset St.	Butter, Ice cream.



INDUSTRIES (Continued)

Name and Address.	Products
Ottawa Car Co. 311 Slater St.	Ambulance waggons, electric cars, interurban cars, waggons, automobile bodies, sleighs, gun carriages, machine works, etc.
Ottawa Boot & Moccasin Co. 519 Sussex St.	Boots, moccasins.
Ottawa Paper Box Co. 129 Queen St.	Paper boxes.
Ottawa & Hull Power Mfg. Co., 239 Wellington St.	Hydro-electric power.
Ottawa Light, Heat & Power Co., 230 Wellington St.	Hydro-electric power.
Ottawa Stair Works 989 Somerset St.	Refrigerators, grillework, show cases, etc.
Ottawa Specialty Co. 59 Armstrong St.	Disinfectants
Oliver, J. & Sons Oliver & Loretta Sts.	Furniture.
Ottawa Paint Works 687 Wellington St.	Oils, paints.
Ottawa Vacuum Cleaner Co., 349 Dalhousie St.	Vacuum cleaners
National Vinegar Co. Brewery St., Hull.	Vinegar.
Pritchard-Andrews Co. 264 Sparks St.	Stamps, scales, brass work, engravers, die sinkers, etc.
Silicate Brick Co. Echo Drive.	Brick.
Stronglite Box Co. Bridge and Wellington.	Paper boxes.
Smith, R. J. & Co. 71 Queen St.	Clothing.
Sparks Bros. 221 Queen St.	Clothing.

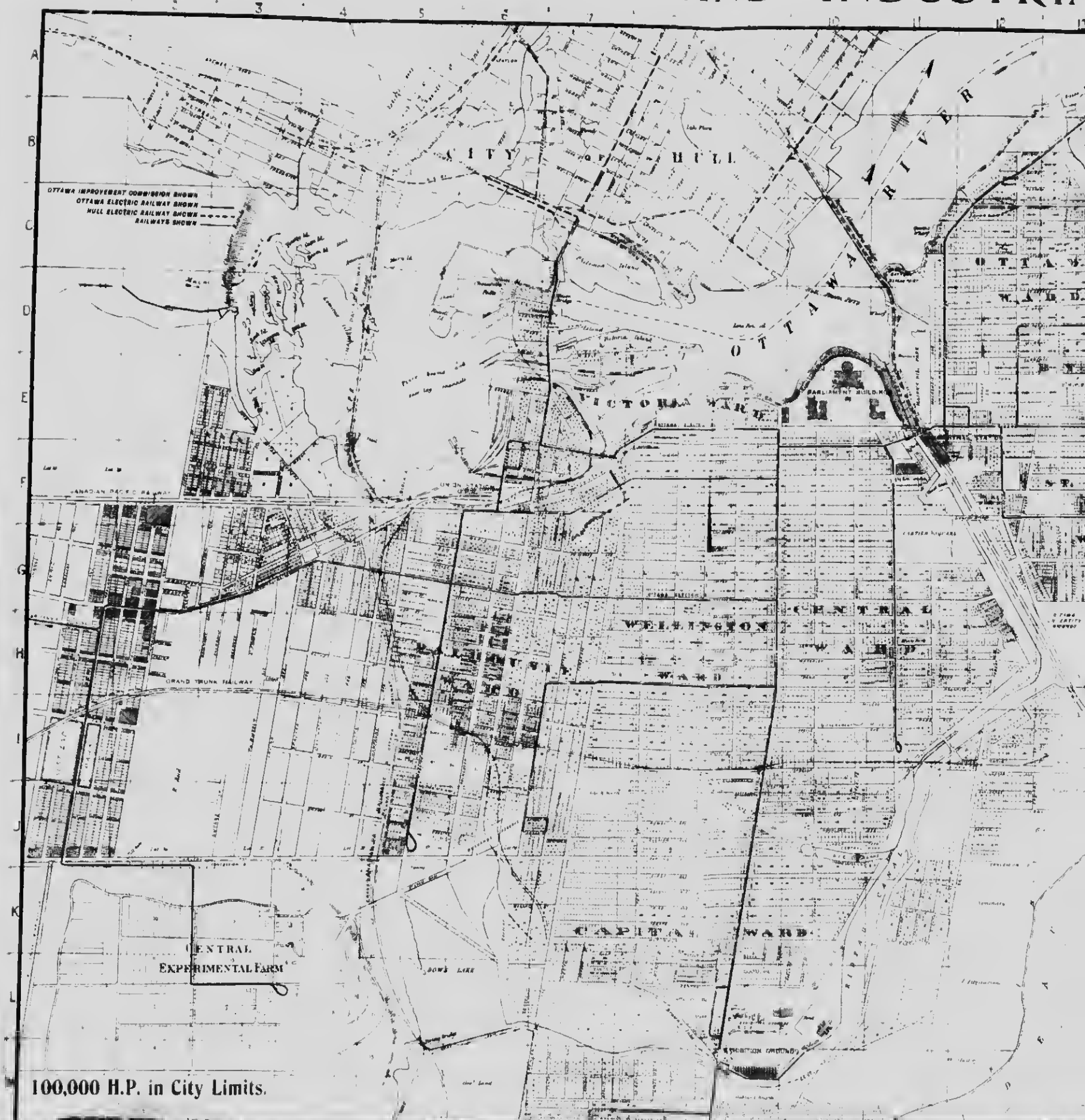
INDUSTRIES Continued.

Name and Address.	Products
Shepherd & Morse Central Chambers.	Lumber.
Powers, P. J. & Co. 430 Wellington St.	Steel boats, boilers, dredge buckets, etc.
Peerless Brick & Tile Co. 90 Somerset St.	Bricks, tiles.
Parker Broom Co. 692 Wellington St.	Brooms, brushes.
Pageau Mfg. Co. 260 Dalhousie St.	Shirt waists.
Rideau Mfg. Co. 147 Albert St.	Clothing
Regal Mfg. & Supply Co. 328 Queen St.	Loose leaf binder and file metals, stationery specialties.
Tobin Ltd. 222 Strathcona Ave.	Tents, awnings.
Victoria Foundry Co. 182 Bridge St.	Brass, iron, sawmill machinery.
Watson Carriage Co. 98 Friel St.	Carriages, waggons, "Commerce" commercial motor cars.
Walters, H. & Sons	Lumbering tools, axes.
Woods Ltd.	Tents, awnings, contractor's and lumbermen's clothing.





THE PUBLICITY AND INDUSTRIAL



OTTAWA IMPROVEMENT COMMISSION SHOWN
OTTAWA ELECTRIC RAILWAY SHOWN
HULL ELECTRIC RAILWAY SHOWN
RAILWAYS SHOWN

CANADIAN PACIFIC RAILWAY

GRAND TRUNK RAILWAY

CENTRAL
EXPERIMENTAL FARM

100,000 H.P. in City Limits.

DOWS LAKE

CAPITOL WARD

WELLINGTON WARD

CENTRAL WARD

VICTORIA WARD

CITY OF HULL

OTTAWA RIVER

OTTAWA

W.A.D.B.

PARLIAMENT BUILDING

ST. JOHN'S

ST. PATRICK'S

ST. MARY'S

ST. MICHAEL'S

ST. ANNE'S

ST. JOSEPH'S

ST. FRANCIS

ST. CHARLES

ST. JOHN

ST. PETER

ST. PAUL

ST. MARY

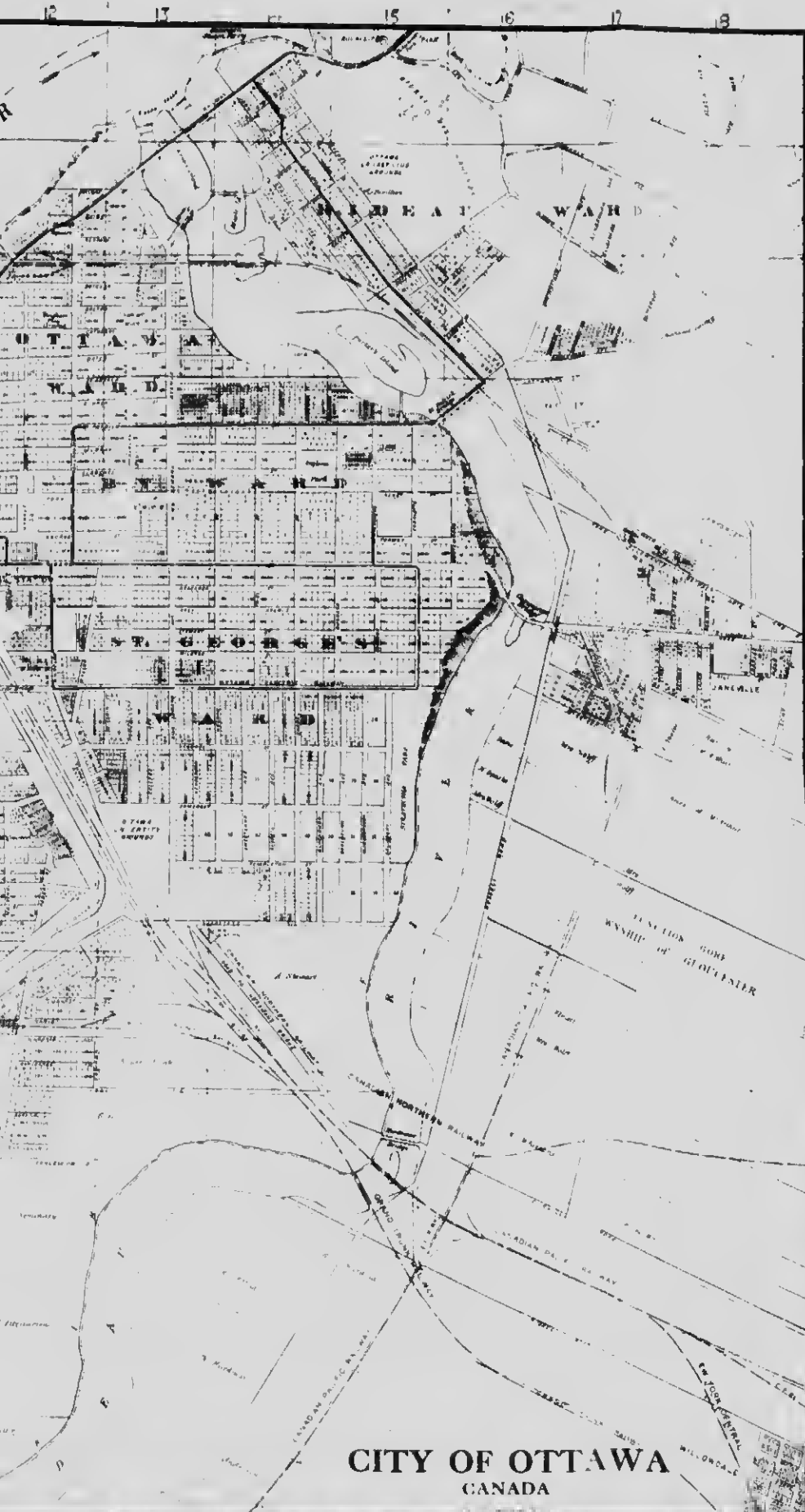
ST. ANNE

ST. JOSEPH

ST. FRANCIS

CENTRAL

STRIAL BUREAU



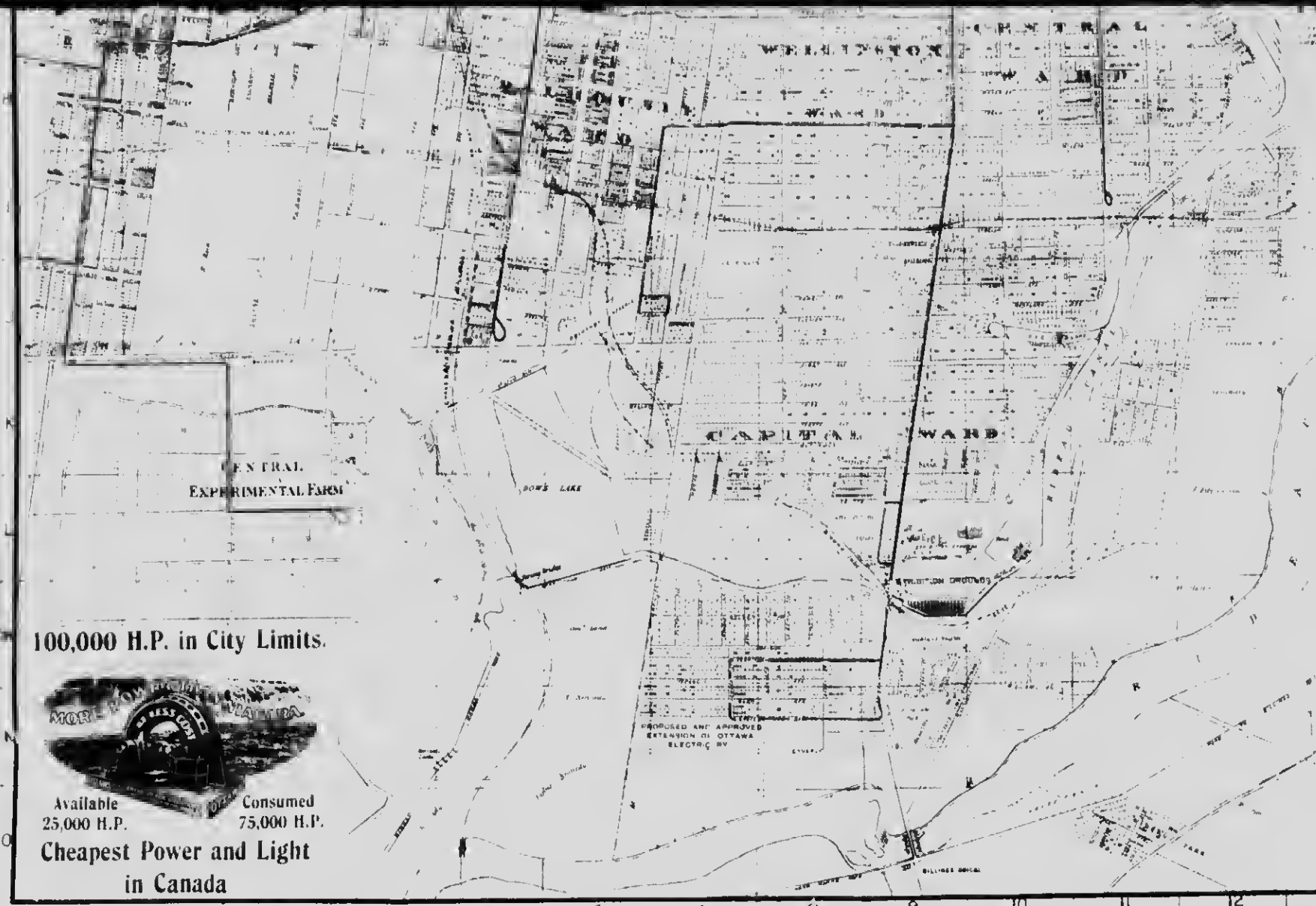
CITY OF OTTAWA
CANADA

1912 MAP CITY OF OTTAWA, CANADA

TO FIND A STREET

Look down the List of Streets till you find the Street wanted, compare the reference to the letters showing Squares running North to South and to the figures showing Squares running West to East and in the intersecting Square the name of the Street will be found.

Aberdeen I 5	Cumberland D 13	Ladlin H 5	Preston I 8
Ableton K 10	Cuningham F 12	Ladouceur G 3	Proctoria I 10
Albert A 5	Dalrymple D 12	Langevin C 17	Primrose G 7
Albert F 9	Daly E 13	Laurel G 14	Princess Ave. H 15
Alexander A 14	Delaware H 12	Laurier Ave. E. F 13	Queen F 9
Ambrose J 7	Derby H 10	Laurier Ave. W. F 8	Queen West E 6
Anderson G 6	Division I 6	Lawrence J 5	Ralph K 8
Angelen Square D 14	Dolly Vardor I 6	LaBreton I 6	Raymond I 6
Ann K 9	Dorothy I 8	Lees J 12	Rudolph B 12
Archibald I 9	Douglas K 6	Leonard M 8	Regent K 9
Argyle I 10	Drummond K 11	Lett F 7	Rideau A 14
Arlington I 9	Dufferin Rd C 15	Lewis H 10	Rideau Gate E 14
Armstrong G 2	Duhamel G 3	Linden Lea B 17	Rideau Terrace B 16
Arthur H 7	Duke L 17	Lisgar G 9	Ring F 13
Ash G 5	Earncliffe B 13	Little Sussex E 11	River Lane C 15
Augusta E 15	Eccles G 6	Lloyd F 7	Riverville N 9
Avon Lane C 15	Echo Drive M 10	Loretta I 4	Robert H 12
Aylmer Ave M 7	Edgar C 16	Lorne G 8	Rochester I 6
Baird B 12	Electric H 11	Lovers' Walk D 10	Rose D 14
Balsam H 6	Elgin I 6	Lydia I 8	Rosebery J 9
Bank H 9	Elizabeth K 7	McAuliffe Lane E 7	Rosedale M 7
Barnett D 12	Ella H 6	McOrmick G 2	Rupert K 9
Barton M 8	Ellen G 5	McDonald H 12	Rusklin I 6
Bay H 8	Elm H 12	McDougal G 13	Russell G 14
Baywater I 4	Ernest J 7	McGillivray K 11	St. Andrew D
Bayview Rd. F 4	Euclid M 8	McKay B 15	St. Francis H
Beach I 4	Exhibition Rd. L 9	McLeod H 9	St. Jean I
Beechwood Ave. C 17	Fentiman M 10	McTaggart C 12	St. Joseph D 14
Bell I 6	Fifth Ave K 9	MacDonald H 12	St. Patrick D 12
Bellwood M 9	Fifth Mechanics F 2	MacKay B 15	Salisbury H 15
Belmont M 14	First Mechanics F 3	MacKenzie E 11	Salisbury Place H 12
Bertrand E 13	First Ave J 8	MacLarn G 9	Scott F 2
Blossner E 13	Flora I 9	Main J 12	Second (Mechanics-ville) F 3
Boothby Rd. H 2	Florina H 9	Maple Lane B 17	Second Ave. K 8
Blackburn Ave. G 11	Foster H 2	Margaret H 5	Seneca M 7
Bolton C 12	Fortin K 8	Marlborough G 15	Sherbrooke H 3
Botcher C 12	Frank H 10	Martineau D 13	Sherwood E 6
Bozeng Hill I 4	Frederic E 14	Mary K 10	Shirley M 7
Bridge E 7	Fulton M 7	Mason F 4	Slater F 9
Brighton M 10	Gait M 8	McGund K 8	Sinclair G 1
Bristol M 10	Gealand G 4	McLose H 3	Somerset G 9
Brunswick E 7	George E 12	Norton G 3	Somerset East G 13
Broad F 6	Georgetown H 9	Metcalfe G 10	Spadina I 4
Broadway L 7	Gibson H 9	Metcalfe Sq. B 12	Sparks E 1
Bronson H 7	Glaston H 9	Middle D 7	Spencer G 16
Bullman F 2	Glen N 7	Mill D 7	Springfield C 16
Bull Terrier Ter. C 17	Glenora Ave. K 11	Mill Lane E 12	Springhurst J 13
By Ward Market E 12	Glenora F 9	Monk K 9	Spruce G 5
By Ward Market Sq. E 12	Gordon K 7	Monkland J 10	Stahley F 13
Cambridge H 7	Gosselin G 15	Montclair I 13	Stewart F 13
Cameron M 8	Granville Ave. G 1	Montreal E 7	Sterling F 3
Canal I 11	Grant G 2	Morris K 8	Stor J 11
Canal Driveway G 11	Greenfield H 13	Mosgrove E 12	Strathcona M 7
Carling J 8	Grossman M 8	Munroe I 6	Sunnyside M 7
Carlyle Ave. M 7	Grove M 7	Muriel K 2	Sussex G 14
Caroline G 1	Gwynne J 3	Murray D 12	Sweetland G 14
Carruthers G 3	Hamilton B 2	Mutchmor K 8	Sydney J 5
Cartier H 11	Harbour B 1	Nelson F 14	Tempton H 14
Cartier Square F 11	Harbour B 1	Nepen I 9	Third (Mechanics-ville) F 3
Catherine I 9	Harbour B 1	Nicholas F 12	Third K 11
Cathcart C 12	Harbour B 1	Noel G 16	Thomas A 14
Cayuga M 8	Harbour B 1	Norman I 5	Thorn K 9
Cedar I 12	Harvey I 12	Notre Dame D 14	Thornon A 14
Centre (Mechanics-ville) F 3	Havelock I 12	O'Connor G 10	Torrey E 15
Chamberlain I 9	Hawthorne I 12	O'Meara G 4	Torrington L 7
Champane I 5	Hazel D 8	O'Neil G 5	Turner J 7
Chaplain C 17	Head D 8	Oak I 9	Tyndal H 1
Chapleau F 14	Henderson G 13	Oakland I 9	Union B 14
Charles A 17	Hewey I 8	Olive I 9	Victoria B 14
Charles A 17	Herridge K 11	Oregon I 6	Victoria E 9
Charlotte E 15	Hills I 4	Osgood G 13	Wallace K 6
Chaudiere D 7	Hill F 7	Ossington N 8	Waller F 10
Christie H 7	Hinton I 1	Ottawa F 6	Water C 10
Church D 12	Hobart I 7	Oxford G 3	Waverley H 10
Church D 12	Hopwood M 14	Panolla J 5	Wellington E 10
Church D 12	Horwood M 14	Papineau D 15	Wellington E 10
Church D 12	Huron H 12	Park I 11	Wilbrod F 1
Church D 12	Irving A 3	Parkdale I 2	Willwood I 1
Church D 12	Isabella I 17	Parliament D 14	Willard M 1
Church D 12	Jay D 17	Patterson J 10	William E 1
Church D 12	John K 9	Percy H 8	Willow H 1
Church D 12	John K 9	MacKenzie I 13	
Church D 12	John K 9	MacLarn G 9	
Church D 12	John K 9	Main J 12	
Church D 12	John K 9		



100,000 H.P. in City Limits.



**Cheapest Power and Light
in Canada**

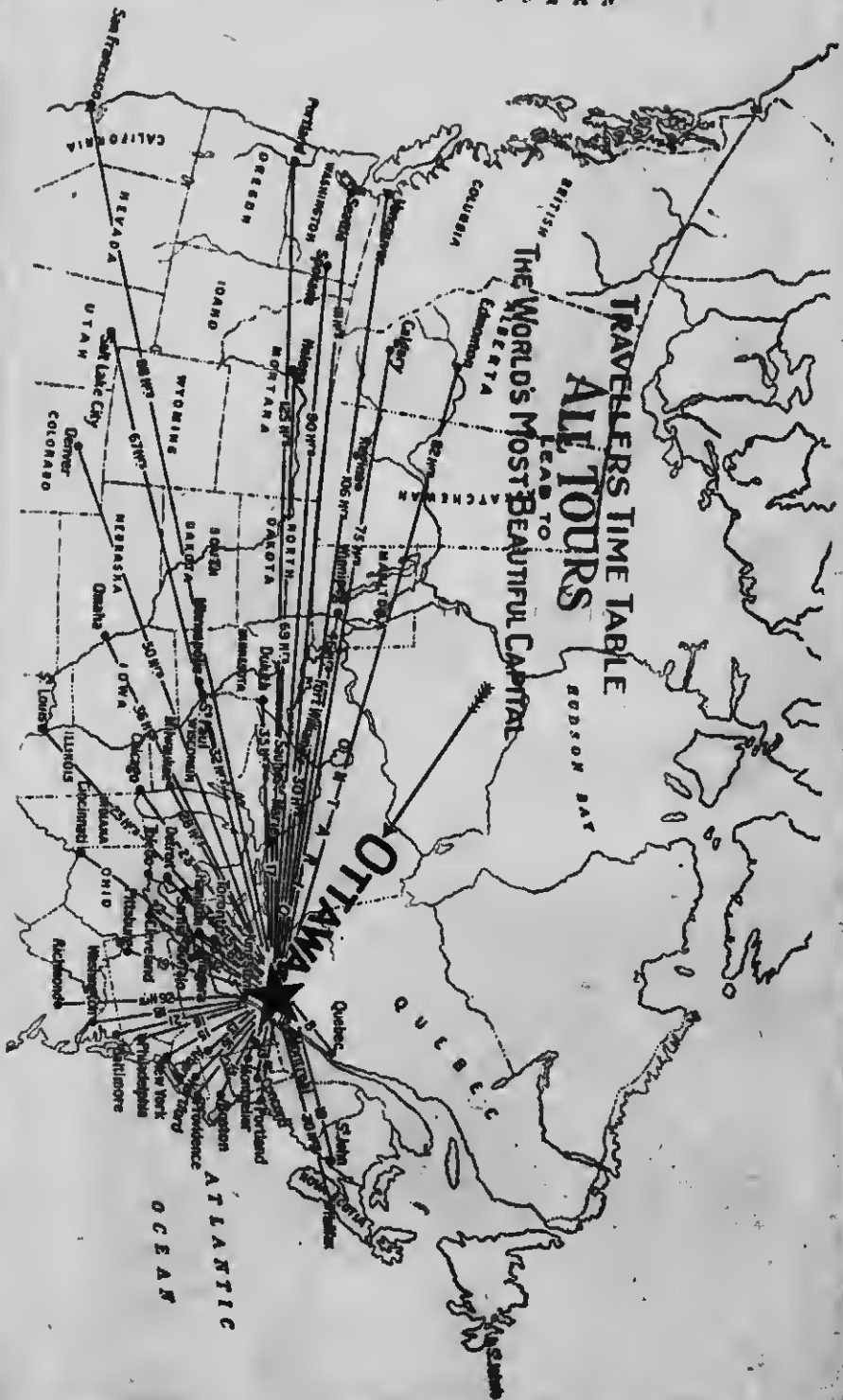
CITY OF OTTAWA, CANADA

Sh
Po
Pe
Pa
Pe
Rid
Re
To
Vic
Wa
Wa
Wo





PACIFIC OCEAN



TRAVELLERS TIME TABLE
ALL TOURS

LEAD TO
THE WORLD'S MOST BEAUTIFUL CAPITAL

OTTAWA

ATLANTIC OCEAN

QUEBEC

HUDSON BAY

SAN FRANCISCO
CALIFORNIA

NEVADA
UTAH

WYOMING
MONTANA

NEBRASKA
KANSAS

IOWA
ILLINOIS

INDIANA
OHIO

PENNSYLVANIA
NEW YORK

NEW JERSEY
CONNECTICUT

MASSACHUSETTS
VERMONT

NEW HAMPSHIRE
RHODE ISLAND

OREGON
WASHINGTON

IDAHO
MONTANA

NEBRASKA
KANSAS

NEBRASKA
KANSAS

NEBRASKA
KANSAS

NEBRASKA
KANSAS

NEBRASKA
KANSAS

NEBRASKA
KANSAS

NEBRASKA
KANSAS

NEBRASKA
KANSAS

NEBRASKA
KANSAS

WASHINGTON
OREGON

IDAHO
MONTANA

NEBRASKA
KANSAS

NEBRASKA
KANSAS

NEBRASKA
KANSAS

NEBRASKA
KANSAS

NEBRASKA
KANSAS

NEBRASKA
KANSAS

NEBRASKA
KANSAS

NEBRASKA
KANSAS

NEBRASKA
KANSAS

WASHINGTON
OREGON

IDAHO
MONTANA

NEBRASKA
KANSAS

NEBRASKA
KANSAS

NEBRASKA
KANSAS

NEBRASKA
KANSAS

NEBRASKA
KANSAS

NEBRASKA
KANSAS

NEBRASKA
KANSAS

NEBRASKA
KANSAS

NEBRASKA
KANSAS

WASHINGTON
OREGON

IDAHO
MONTANA

NEBRASKA
KANSAS

NEBRASKA
KANSAS

NEBRASKA
KANSAS

NEBRASKA
KANSAS

NEBRASKA
KANSAS

NEBRASKA
KANSAS

NEBRASKA
KANSAS

NEBRASKA
KANSAS

NEBRASKA
KANSAS

WASHINGTON
OREGON

IDAHO
MONTANA

NEBRASKA
KANSAS

NEBRASKA
KANSAS

NEBRASKA
KANSAS

NEBRASKA
KANSAS

NEBRASKA
KANSAS

NEBRASKA
KANSAS

NEBRASKA
KANSAS

NEBRASKA
KANSAS

NEBRASKA
KANSAS

WASHINGTON
OREGON

IDAHO
MONTANA

NEBRASKA
KANSAS

NEBRASKA
KANSAS

NEBRASKA
KANSAS

NEBRASKA
KANSAS

NEBRASKA
KANSAS

NEBRASKA
KANSAS

NEBRASKA
KANSAS

NEBRASKA
KANSAS

NEBRASKA
KANSAS

