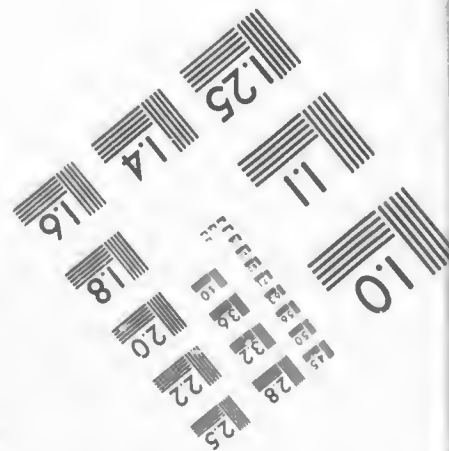
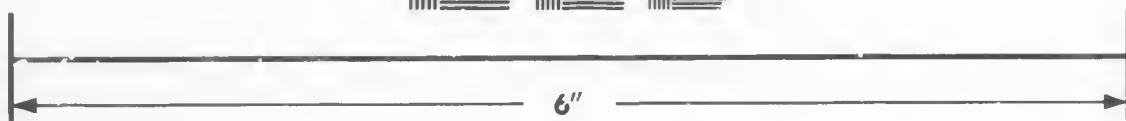
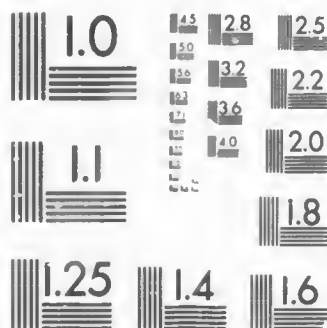


IMAGE EVALUATION  
TEST TARGET (MT-3)



Photographic  
Sciences  
Corporation

23 WEST MAIN STREET  
WEBSTER, N.Y. 14580  
(716) 872-4503

25  
22

**CIHM/ICMH  
Microfiche  
Series.**

**CIHM/ICMH  
Collection de  
microfiches.**



**Canadian Institute for Historical Microreproductions / Institut canadien de microreproductions historiques**

**© 1987**

Technical and Bibliographic Notes/Notes techniques et bibliographiques

The Institute has attempted to obtain the best original copy available for filming. Features of this copy which may be bibliographically unique, which may alter any of the images in the reproduction, or which may significantly change the usual method of filming, are checked below.

L'Institut a microfilmé le meilleur exemplaire qu'il lui a été possible de se procurer. Les détails de cet exemplaire qui sont peut-être uniques du point de vue bibliographique, qui peuvent modifier une image reproduite, ou qui peuvent exiger une modification dans la méthode normale de filmage sont indiqués ci-dessous.

- Coloured covers/  
Couverture de couleur
- Covers damaged/  
Couverture endommagée
- Covers restored and/or laminated/  
Couverture restaurée et/ou pelliculée
- Cover title missing/  
Le titre de couverture manque
- Coloured maps/  
Cartes géographiques en couleur
- Coloured ink (i.e. other than blue or black)/  
Encre de couleur (i.e. autre que bleue ou noire)
- Coloured plates and/or illustrations/  
Planches et/ou illustrations en couleur
- Bound with other material/  
Relié avec d'autres documents
- Tight binding may cause shadows or distortion  
along interior margin/  
La reliure serrée peut causer de l'ombre ou de la  
distorsion le long de la marge intérieure
- Blank leaves added during restoration may  
appear within the text. Whenever possible, these  
have been omitted from filming/  
Il se peut que certaines pages blanches ajoutées  
lors d'une restauration apparaissent dans le texte,  
mais, lorsque cela était possible, ces pages n'ont  
pas été filmées.
- Additional comments:/  
Commentaires supplémentaires:

- Coloured pages/  
Pages de couleur
- Pages damaged/  
Pages endommagées
- Pages restored and/or laminated/  
Pages restaurées et/ou pelliculées
- Pages discoloured, stained or foxed/  
Pages décolorées, tachetées ou piquées
- Pages detached/  
Pages détachées
- Showthrough/  
Transparence
- Quality of print varies/  
Qualité inégale de l'impression
- Includes supplementary material/  
Comprend du matériel supplémentaire
- Only edition available/  
Seule édition disponible
- Pages wholly or partially obscured by errata  
slips, tissues, etc., have been refilmed to  
ensure the best possible image/  
Les pages totalement ou partiellement  
obscurcies par un feuillet d'errata, une pelure,  
etc., ont été filmées à nouveau de façon à  
obtenir la meilleure image possible.

This item is filmed at the reduction ratio checked below/  
Ce document est filmé au taux de réduction indiqué ci-dessous.

10X	12X	14X	16X	18X	20X	22X	24X	26X	28X	30X	32X
				✓							

The copy filmed here has been reproduced thanks to the generosity of:

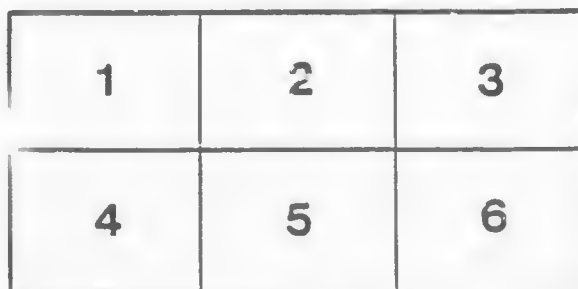
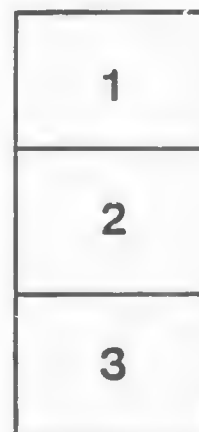
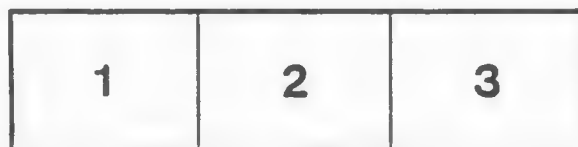
Archives of Ontario  
Toronto

The images appearing here are the best quality possible considering the condition and legibility of the original copy and in keeping with the filming contract specifications.

Original copies in printed paper covers are filmed beginning with the front cover and ending on the last page with a printed or illustrated impression, or the back cover when appropriate. All other original copies are filmed beginning on the first page with a printed or illustrated impression, and ending on the last page with a printed or illustrated impression.

The last recorded frame on each microfiche shall contain the symbol  $\longrightarrow$  (meaning "CONTINUED"), or the symbol  $\nabla$  (meaning "END"), whichever applies.

Maps, plates, charts, etc., may be filmed at different reduction ratios. Those too large to be entirely included in one exposure are filmed beginning in the upper left hand corner, left to right and top to bottom, as many frames as required. The following diagrams illustrate the method:



L'exemplaire filmé fut reproduit grâce à la générosité de:

Archives of Ontario  
Toronto

Les images suivantes ont été reproduites avec le plus grand soin, compte tenu de la condition et de la netteté de l'exemplaire filmé, et en conformité avec les conditions du contrat de filmage.

Les exemplaires originaux dont la couverture en papier est imprimée sont filmés en commençant par le premier plat et en terminant soit par la dernière page qui comporte une empreinte d'impression ou d'illustration, soit par le second plat, selon le cas. Tous les autres exemplaires originaux sont filmés en commençant par la première page qui comporte une empreinte d'impression ou d'illustration et en terminant par la dernière page qui comporte une telle empreinte.

Un des symboles suivants apparaître sur la dernière image de chaque microfiche, selon le cas: le symbole  $\longrightarrow$  signifie "A SUIVRE", le symbole  $\nabla$  signifie "FIN".

Les cartes, planches, tableaux, etc., peuvent être filmés à des taux de réduction différents. Lorsque le document est trop grand pour être reproduit en un seul cliché, il est filmé à partir de l'angle supérieur gauche, de gauche à droite, et de haut en bas, en prenant le nombre d'images nécessaire. Les diagrammes suivants illustrent la méthode.

SEPTEMBER

# GRAND TRUNK RY. COMPANY

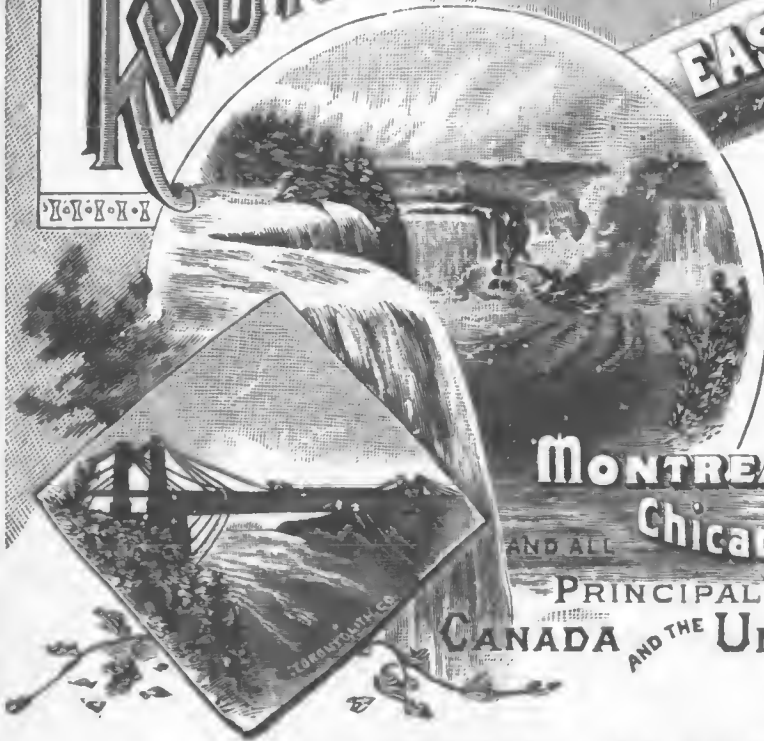
1765

OFFICIAL TIME TABLE  
OF CANADA

The Great **ROUTE** International BETWEEN THE **EAST & WEST**

THE Favourite Route TO

Boston, New York, Buffalo, Niagara Falls, Peterboro', Quebec, Portland, Halifax, Winnipeg, Kansas City, Omaha, St. Paul, St. Louis, Port Huron, London, Hamilton.



MONTREAL, Chicago, Detroit, AND ALL PRINCIPAL POINTS IN CANADA AND THE UNITED STATES

L. J. SEARGEANT Traffic Manager, WM. EDGAR, Gen. Pass. Agent, JOSEPH HICKSON General Manager,  
H. TAYLOR, Publisher, G. T. R. Office, 20 York-street, TORONTO.





## LEADING TORONTO HOTELS.

### THE QUEEN'S HOTEL

Rates, \$3.00, \$3.50 and \$4.00.

Celebrated for its homo comforts, perfect quiet, excellent attendance, and the peculiar excellence of its cuisine, and has been patronized by their Royal Highnesses Prince Leopold and the Princess Louise; the Marquis of Lorne; and the best families. Is most delightfully situated near the Bay on Front Street, and is one of the largest and most comfortable hotels in the Dominion of Canada.

McGAW & WINNETT, Proprietors.

### Walker House

TORONTO, ONTARIO.

\$2.00 Per Day.

This favourite commodious hotel, near the Union Station, overlooking Lake Ontario; pleasant summer resort; passenger elevator.

### REVERE HOUSE

Cor. King and York Sts., Toronto, Ont.

\$1.50 PER DAY.

J. J. JAMESON, Proprietor.

N. B.—Special rates to commercial men and the theatrical profession.

See advt. on map.

### NEW Arundel House

Now open to the travelling public.

56 JARVIS ST., TORONTO. \$1 Per Day.

Thoroughly furnished and fitted throughout with electric light, annunciators in all the rooms, and all modern conveniences to meet the requirements of the travelling public, now stands second to no \$1.00 per day hotel on the continent.

E. A. GERMAN, Proprietor.

### ROSSIN HOUSE

TORONTO, ONTARIO, CANADA.

The Leading Hotel in Toronto.

Practically fire proof; strictly first-class; American plan.

Price Graduated, \$2.50 to \$3.50 Per Day.

Fire escapes in all bedrooms.

HENRY J. NOLAN,

MARK H. IRISE,

Chief Clerk.

Proprietor.

### Palmer House

COR. KING & YORK STREETS, TORONTO.

This capacious hotel, with 100 well lighted and ventilated boudoirs, elegantly fitted and furnished throughout, will on July 10th be formally thrown open to the travelling public. Elevators, annunciators, electric lights, fine sample room accommodations; a very desirable location and all modern conveniences.

J. C. PALMER,

of Kirby House, Brantford, Proprietor.

### AMERICAN HOTEL

TORONTO, ONTARIO.

Newly refitted and renovated throughout; convenient to cars and steamboat landing; free omnibus.

RATES, \$2.00 PER DAY.

Special rates to commercial travellers.

THOS. TAYLOR,

ED. EDSALL,

Proprietor.

Manager.

### SIMCOE HOUSE,

CORNER FRONT AND SIMCOE STREETS.

One Minute Walk from all Trains.

This house has been thoroughly renovated, and now presents to the travelling public all the conveniences to be found in higher priced houses. Its bed-rooms are the finest and best ventilated in the city, and the proprietors can confidently rank it as the best second-class hotel in Toronto. Terms, \$1 and \$1.50 Per Day. Open Day and Night.

GREEN & CO., Proprietors.

# R. WALKER & SONS




Have Just Opened up

5 CASES OF TWEEDS

The Latest Styles in Scotch Suitings,  
Special Patterns Selected for Boys.

SUITS MADE TO ORDER

In the Latest New York and London Fashions. 

GOOD FIT GUARANTEED AT MODERATE PRICES.

1500 ELEGANT MANTLES

The Height of the Fashion from London and Paris.

ALSO 50 CASES OF DRESS MATERIALS.

All the Newest Styles for Fall and Winter.

THE LATEST NOVELTIES OF THE SEASON AT REASONABLE PRICES.

Parties furnishing their houses will find it to their advantage to get  
our prices, etc., in CARPETS and HOUSE FURNISHINGS.

R. WALKER & SONS,

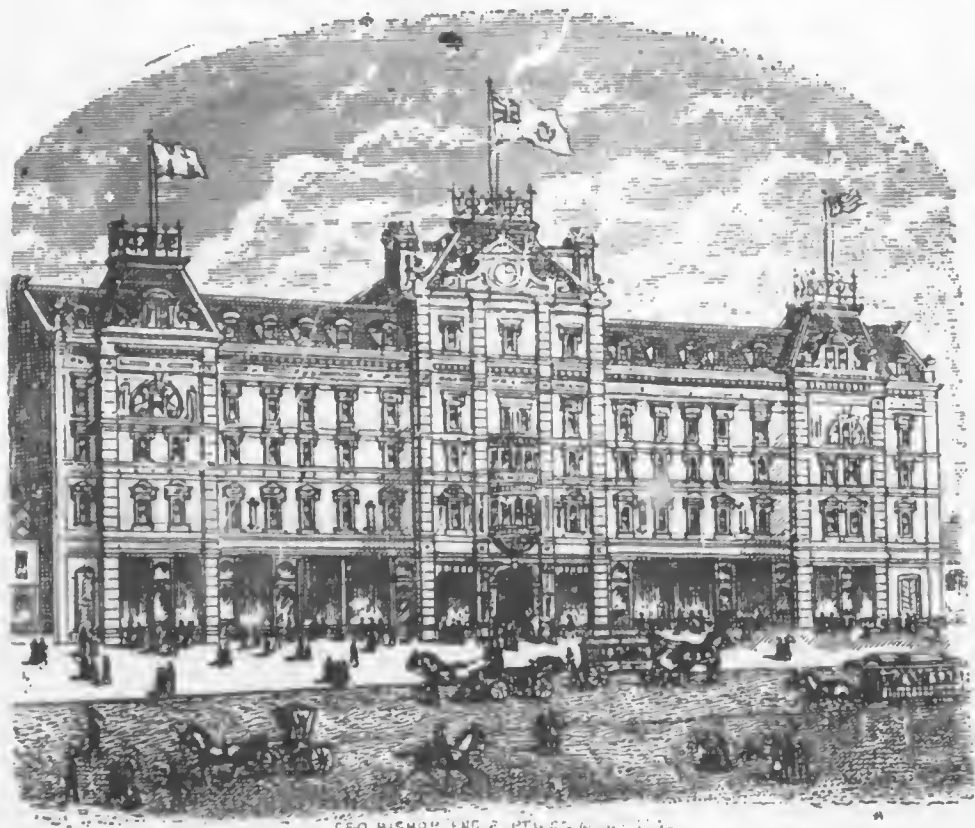
33 to 37 King Street East,

TORONTO.



# THE BALMORAL HOTEL,

Notre Dame Street,  
MONTREAL.



Geo. Bismont Eng. & Archt. Montreal

The Balmoral was built during the year 1885, and was opened for the reception of guests on May 24th of the present year. It is constructed of Grey Limestone, has a frontage of 210 feet on Notre Dame Street, and is the only First-Class Hotel in the business portion of Montreal. Electric fire alarms in all the bed-rooms connected with the office, fire alarm gongs in each corridor, and all appliances known to modern hotel builders, to add to the comfort, convenience and safety of guests.

---

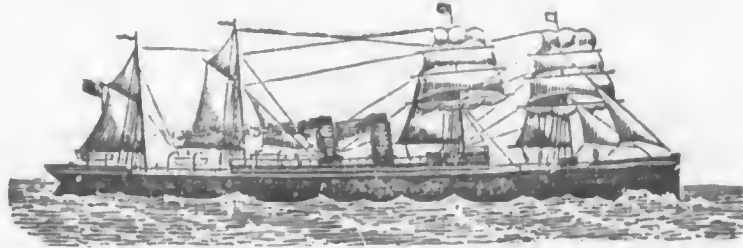
RATES, \$2.00 TO \$3.00 PER DAY.

---

E. H. DUNHAM,  
Proprietor.

# DOMINION LINE.

## ROYAL MAIL STEAMSHIPS.



*VANCOUVER, 5,300 tons.	*OREGON, 3,750 tons.	MONTREAL, 3,300 tons.
DOMINION, 3,200 "	TEXAN, 2,750 "	*SARNIA, 3,750 "
TORONTO, 3,300 "	ONTARIO, 3,200 "	QUEBEC, 2,600 "
	MISSISSIPPI, 2,600 tons.	

### SAILING WEEKLY BETWEEN **QUEBEC, LONDONDERRY AND LIVERPOOL.**

These steamers are all of the highest class, Clyde built, and in water tight compartments, commanded by men of large experience, and carry stewards, stewardesses, and surgeon.

\*The saloons are amidships, where but little motion is felt, and neither cattle nor sheep are carried.

The voyage by the St. Lawrence—for intending travellers, is the most pleasant—being 500 miles shorter than via New York, and three days of it, in the comparatively smooth waters of the River and Gulf, with their magnificent scenery.

Passengers per SS. "Sarnia," "Montreal," and "Toronto," can embark at Montreal, if they so desire.

### *RATES OF PASSAGE FROM QUEBEC :*

**Cabin, \$50 to \$80,** according to steamer and accommodation.

**Second Cabin, \$30. Steerage at lowest rates.**

For further particulars apply to the local agents in the different towns and cities, or to

M. D. MURDOCH & Co.,  
69 Yonge Street, Toronto.

WM. M. MACPHERSON,  
Quebec.

GEO. W. TORRANCE,  
18 Front St. West, Toronto.

DAVID TORRANCE & Co.,  
Gen. Agents, Montreal.

## GRAND TRUNK RAILWAY.

### Pullman Palace Sleeping & Drawing Room Car Service

**MONTREAL, POINT LEVI AND HALIFAX**—Via *Grand Trunk and Intercolonial Railways*.—Tri-weekly line of Pullman Palace Sleeping Cars (operated in connection with the Sleeping Cars of the Intercolonial Railway) leaves Montreal and Halifax on Mondays, Wednesdays and Fridays. Weekly line (steamer special) Pullman Palace Sleeping Cars, running in connection with Allan's Line of Mail Steamers, will leave Montreal Tuesday evenings, arriving at Halifax Thursday mornings, returning from Halifax on arrival of steamer due Fridays.

**MONTREAL AND TORONTO**—Via *Grand Trunk Railway*.—Line of Pullman Palace Sleeping Cars leaves East and West daily.

**TORONTO AND KINGSTON** sleeper leaves Toronto daily for Kingston; at 8 o'clock p.m.

**MONTREAL AND PORTLAND**—Via *Grand Trunk Railway*.—Line of Pullman Palace Sleeping Cars leaves East and West daily, Sundays excepted. Saturday's car from Montreal lays over at Island Pond until Monday morning.

**TORONTO AND OTTAWA**—Via *Grand Trunk and Canadian Pacific Railways*.—Line of Pullman Palace Sleeping Cars leaves East and West daily.

**TORONTO AND DETROIT**—Via *Grand Trunk Railway*.—Composite Cars leave Westward daily, Sunday excepted, and Eastward daily.

**MONTREAL AND OTTAWA**—Via *Grand Trunk and Canada Atlantic Railways*.—Line of Pullman Palace Parlor Cars leave East and West daily, Sundays excepted.

Through Pullman between Boston and Chicago, leaving Boston 1.00 p.m., Montreal 11.55 p.m., Toronto 1.00 p.m. East bound, arriving at Montreal 8.30 p.m., leaving immediately for Boston.

Leaving Montreal for Portland 8.10 a.m. (Orchard Beach) Parlor Car, and 10.15 p.m. Sleeping Car. Returning, will leave Portland 9.30 a.m. (Orchard Beach) Parlor Car, 1.30 p.m. Sleeping Car.

Parlor Cars between Boston and Gorham, in connection with Boston and Maine Route, on train leaving Portland 1.30 p.m. and Gorham 8.40 a.m.

**MONTREAL AND QUEBEC**—Parlor Car on day trains leaving Montreal 8.10 a.m. and Point Levi 2.20 p.m. Sleeping Car on night trains leaving Montreal 10.15 p.m., Point Levi 8.30 p.m.; on alternate days running to St. John and Halifax.

Pullman Sleeping Car between Newport and Point Levi on trains leaving Point Levi 8.30 p.m. and Sherbrooke 11.40 p.m.

**MONTREAL AND SPRINGFIELD**—Via *Grand Trunk, Central Vermont and Connecticut River Railways*.—Line of Pullman Palace Sleeping Cars leave North and South daily, except Sundays.

**CHICAGO, SUSPENSION BRIDGE AND BUFFALO**—Via *Chicago and Grand Trunk Ry.; Great Western Division Grand Trunk Railway*.—Line of Pullman Palace Sleeping Cars leaves Eastward daily, and Westward daily, Sundays excepted.

**MONTREAL, POINT LEVI AND ST. JOHN**—Via *Grand Trunk and Intercolonial Railways*.—Tri-weekly line of Pullman Palace Sleeping Cars (operated in connection with the Sleeping Cars of the Intercolonial Railway) leave Montreal and St. John on Tuesdays, Thursdays and Saturdays. Saturday's cars from Montreal and St. John lay over at Point Levi and Campbellton until Monday morning.

**MONTREAL AND NEW YORK**—Via *G. T., C. V., B. and R., T. and B., and N. Y. C. and H. R. R.*—Line of Sleeping Cars North and South daily, except Sunday.

**MONTREAL AND NEW YORK**—Via *Grand Trunk, Delaware, & Hudson Canal Company and New York Central & Hudson River Railways*.—Line of Sleeping Cars North and South daily, except Sundays.

**MONTREAL AND BOSTON**—Via *Grand Trunk, Central Vermont, Northern, Concord and Boston & Lowell Railways*.—Line of Pullman Buffet Parlor Cars leave North and South daily, Sundays excepted. Line of Pullman Buffet Sleeping Cars leaves North and South daily, Sundays excepted.

**MONTREAL AND CHICAGO**—Via *Grand Trunk, and Chicago and Grand Trunk Railways*.—Line of Pullman Palace Sleeping Cars leaves East and West daily. Saturday's car from Chicago lays over at Toronto until Sunday evening, arriving at Montreal Monday morning.

**MONTREAL AND POINT LEVI**—Line of Parlor Cars leave East and West daily, except Sunday.

### TO BUFFALO AND SUSPENSION BRIDGE.

**NO. 2, LIMITED EXPRESS**—Leaves Detroit 1.40 a.m. daily. Has Sleeping Cars from Chicago to New York via C. & G. T.; G. T. & W. S. Railways. Also via B. & O. Wabash, G. T. & West Shore Railways.

Through Coaches Chicago to Buffalo and New York, via B. & O. Wabash, G. T. & West Shore Railways. Also via C. & G. T., G. T. & West Shore Railways.

Sleeping Car, Detroit to Suspension Bridge, via Grand Trunk.  
Dining Car, Hamilton to Suspension Bridge.

[OVER

## Grand Trunk Railway.—Pullman Palace Sleeping and Drawing Room Car Service.—Continued.

- NO. 6, ATLANTIC EXPRESS**—Leaves Detroit at 8 a.m. daily. Has Sleeping Cars Chicago to Boston and New York, via C. & G. T.; G. T., Erie & W. S. Railways. Baltimore and Ohio Sleeper Chicago to London, via B. & O., Wabash and G. T. Railways.  
Through coaches Chicago to Suspension Bridge and Buffalo, via B. & O., Wabash and G. T.; also C. & G. T., G. T. & Erie Railways.  
Dining Car, Windsor to Hamilton.
- No. 12, ST. LOUIS EXPRESS**—Leaves Detroit 1.40 p.m. daily. Has Sleeping Car St. Louis to Boston, via Wabash, G. T., West Shore, B. H. T. & W. and F. R. Railways. Sleeping Car Detroit to Suspension Bridge.  
Dining Car, Hamilton to Suspension Bridge.

### FROM BUFFALO AND SUSPENSION BRIDGE.

- NO. 1, CHICAGO EXPRESS**—Leaves Buffalo (Erie Depot) at 10.30 p.m. and Suspension Bridge 1.10 a.m. daily. Has Sleeping Car New York to Chicago via West Shore, G. T. and C. & G. T., also via Erie, G. T., & C. and G. T.; also Sleeper Rochester to Detroit via N. Y. C. & H. R. R. and G. T., and through coach Buffalo to Chicago via Erie, G. T., & C. & G. T. Railways.
- NO. 3, ST. LOUIS EXPRESS**—Leaves Buffalo (West Shore Depot) at 5.45 a.m. and Suspension Bridge 6.55 a.m. daily. Has Sleeping Car Boston to St. Louis, via Fitch, B. H. T. & W.; West Shore; G. T. & Wabash Railways. Also New York to Chicago, via West Shore, G. T. & Wabash Railways.  
Through coach New York to Chicago, via West Shore; G. T., Wabash and B. & O. Railways.  
Dining Car Chatham to Windsor.
- NO. 7 PACIFIC EXPRESS**—Leaves Buffalo (Erie Depot) at 11.50 a.m. and Suspension Bridge at 1.10 p.m. daily. Has Sleeping Cars New York to Chicago, via Erie; West Shore; G. T. & C. & G. T. Railways; also Boston to Chicago via Fitch; B. H. T. & W.; West Shore; G. T. & C. and G. T. Railways.  
Baltimore and Ohio, Sleeper London to Chicago via G. T., Wabash and B. & O. Railways.  
Through coaches Buffalo and Suspension Bridge to Chicago via the Erie; G. T. & C. & G. T. and G. T., Wabash and B. & O. Railways.  
Dining Car Suspension Bridge to Chatham.

### TARIFF FOR DOUBLE BERTHS IN SLEEPING CARS

#### BETWEEN

Boston and Montreal .....	\$2.00	Chicago and Boston, via Buffalo.....	\$5.50
Montreal and Quebec .....	1.50	Chicago and New York, via Buffalo.....	5.00
Montreal and Portland .....	2.00	Chicago and Buffalo.....	3.00
Montreal and New York.....	2.00	Chicago and Toronto.....	3.00
Boston and Detroit, via Montreal.....	4.00	Chicago and Detroit.....	2.00
Boston and Chicago, via Montreal .....	5.50	Chicago and San Francisco .....	17.00
Springfield and St. Albans .....	2.00	Chicago and St. Louis.....	2.00
Montreal and Toronto.....	2.00	Chicago and St. Paul.....	2.00
Montreal and Detroit.....	3.50	Chicago and Kansas City.....	3.00
Montreal and Chicago.....	5.00	Chicago and Calro.....	2.00
Quebec and St. John.....	3.50	Quebec and Halifax.....	4.00
Montreal and St. John .....	4.50	Montreal and Halifax.....	5.00

The following are the Charges for a double berth in Wagner Sleeping Cars either way :

New York and Chicago.....	\$5.00	Chicago to St. Louis .....	2.00
Boston and Chicago.....	5.50	New York to Detroit.....	4.00
Rochester and Chicago.....	3.00	Boston to Detroit.....	4.00
Buffalo and Chicago.....	3.00	Rochester to Detroit.....	2.00
Toronto and Chicago.....	3.00	Buffalo to Detroit .....	2.00
Hamilton and Chicago.....	3.00		

# GRAND TRUNK RAILWAY

General Office, Montreal, Canada.

London Office, Dashwood House, 9 New Broad St., London, Eng.

## DIRECTORS.

SIR HENRY W. TYLER, M.P., President, London, England.  
 SIR CHARLES LAWRENCE YOUNG, BART., Vice-President, London, Eng.  
 LORD CLAUD JOHN HAMILTON, M.P.  
 ROBERT YOUNG, Esq.  
 ROBERT GILLESPIE, Esq.  
 WILLIAM UNWIN HEYGATE, Esq.  
 JAMES CHARLES, Esq.  
 Right Hon. DAVID ROBERT PLUNKET, Q.C., M.P.  
 Hon. JAMES FERRIER, Montreal, Canada.  
 JOHN MARNHAM, Esq.  
 MAJOR ALEXANDER GEORGE DICKSON, M.P.

## OFFICIALS OF THE SYSTEM.

JOSEPH HICKSON, General Manager.....	Montreal, Canada.
L. J. SEARGEANT, Traffic Manager.....	" "
W. WAINWRIGHT, Assistant Manager.....	" "
ROBERT WRIGG, Treasurer.....	" "
A. J. READ, Assistant Treasurer.....	" "
H. W. WALKER, Accountant.....	" "
N. J. POWER, Assistant Accountant.....	" "
T. B. HAWSON, Traffic Auditor.....	" "
J. F. WALKER, Assistant Traffic Auditor.....	" "
J. PORTEOUS, General Freight Agent.....	" "
WM. EDGAR, General Passenger Agent.....	" "
H. K. RITCHIE, Stationery Agent.....	" "
JOHN TAYLOR, General Storekeeper.....	" "
R. NASH, Assistant General Storekeeper.....	" "
D. McLAGGART, Fuel Agent.....	Toronto, "
E. WRAGGE, Local Manager.....	Montreal, "
J. G. HUNT, Car Distributor.....	" "

## DIVISIONAL OFFICERS :

J. STEPHENSON, Superintendent East of Toronto and Northern Division.....	Montreal, Canada.
CHARLES STIFF, Superintendent Southern Division.....	Hamilton, Canada.
E. P. HANNAFORD, Chief Engineer.....	Montreal, "
JOSEPH HOBSON, Chief Engineer.....	Hamilton, "
J. G. MACKLIN, ".....	Peterboro, "
H. WALLIS, Mechanical Superintendent.....	Montreal, "
C. K. DOMVILLE, Mechanical Superintendent.....	Hamilton, "
T. TANDY, Through Traffic General Freight Agent.....	Detroit, Mich.
ARTHUR WHITE, District General Freight Agent.....	Toronto, "
J. MAIN, Assistant General Freight Agent.....	Detroit, Mich.
JOHN CARLIS, District General Freight Agent.....	Toronto, Canada.
A. BURNS, District General Freight Agent.....	Montreal, "
E. R. BAINES, Storekeeper.....	London, "
B. W. WARD, Fuel Agent.....	London, "

## TIME STANDARD.

EASTERN STANDARD: From Sarnia (Pt. Edward) and Windsor East.

CENTRAL STANDARD: Fort Gratiot, Detroit and West.



# GRAND TRUNK RAILWAY, MAIN LINE.

## MONTREAL, QUEBEC, PORTLAND, AND BOSTON.

GOING WEST.							STATIONS.	GOING EAST.							
Pass	Pass	Pass	Pass	Pass	Mxd	Mls	Arrive	Leave	Pass.	Pass.	Pass	Pass	Mxd	Mxd	Sat.
P.M.	A.M.	A.M.	A.M.	P.M.	P.M.				P.M.	A.M.	P.M.	P.M.		A.M.	P.M.
8.10	11.55	8.55	6.00	8.10	6.35	0	Montreal.....		10.15	8.10	3.15	5.20		6.45	1.35
7.50	11.35	8.30	5.40	7.45	6.05	6	St. Lambert .....		10.40	8.30	3.35	5.40		7.20	2.00
	11.23	8.22		7.36	5.50	10	St. Hubert .....				3.43	5.50		7.45	2.09
	11.18	8.12		7.22	5.28	15	St. Bruno .....				3.55	6.00		8.12	2.19
		*8.03			*5.15	18	St. Bazile .....					*6.00			
7.25	11.05	7.57	4.50	7.05	5.00	21	Belœil.....		11.20	8.54	4.08	6.13		8.30	2.30
7.22	11.02	7.43	4.45	6.45	4.54	22	St. Gilaire.....		11.23	8.57	4.12	6.16		8.35	2.45
	10.50	7.40			4.28	28	St. Madeleine.....				4.28	6.28		9.17	P.M.
7.00	10.35	7.25	4.00	P.M.	4.00	35	St. HYACINTHE.....		11.58	9.19	4.43	6.45		9.47	
	10.30	A.M.		Sat.	3.52	37	Ste. Rosalie.....				4.48	P.M.		*9.56	
	10.20	Pass		only	*3.31	42	Britannia Mills.....		a.m.		5.00			10.20	
	10.14		3.33		*3.23	44	St. Liboire.....		*12.23	*9.37	5.06			10.29	
6.35	10.07		3.2		3.10	48	Upton.....		12.31	9.41	5.15			10.43	
3.24	9.53		3.02		2.45	54	Actonvale.....		12.48	9.53	5.30			11.10	
	9.37				2.14	62	Dauby (Old Durham).....			*10.13	5.50			11.43	
6.00	9.23		2.25		1.57	66	South Durham.....		1.22	10.13	6.00			12.01	Mix.
	9.22				1.46	69	Lisgar.....				6.07			12.12	
5.35	9.07		1.50		1.15	76	Lve. } RICHMOND.. { Arr.		1.50	10.30	6.25			12.45	A.M.
5.20	9.00		12.40		1.00	76	Arr. } RICHMOND.. { Lve.		2.15	10.40	6.40			1.15	6.00
*5.00	8.40		12.15		12.27	86	Windsor Mills.....		2.42	10.55	7.02			1.50	6.35
4.43	8.23		11.55		11.58	94	Brompton Falls.....		*3.63		7.20			2.20	7.05
4.23	8.08		11.40		11.35	101	SHERBROOKE.....		3.22	11.20	7.37			2.50	7.40
4.22	8.02		11.32		11.25	104	Lennoxville.....		3.31	11.25	7.44			3.05	8.02
*4.07	7.48		11.14		11.02	111	Waterville.....		*3.50		8.00			3.35	8.50
4.00	7.40		11.05		10.50	114	Compton.....		4.00	11.43	8.19			4.00	9.17
	*7.33				10.40	117	Hillhurst.....				*8.16			*4.20	9.32
3.43	7.23		10.45		10.25	122	Coaticooke.....		4.20	11.58	8.27			5.00	10.15
	*7.12				*9.57	127	Dixville.....				*8.38			*5.25	A.M.
*3.24	7.04		10.22		9.43	132	Norton Mills.....		4.46		8.49			5.43	
	*6.53				*9.26	137	Lake.....				9.00			6.07	
	*6.43				*9.12	141	Summit.....			p.m.	*9.11			6.26	
2.50	6.30	A.M.	6.40	P.M.	8.50	148	Lve. } ISLAND POND { Arr.		5.30	12.45	9.30		P.M.	7.00	A.M.
2.10	A.M.	8.20	8.20	4.20	A.M.	148	Arr. } ISLAND POND { Lve.		6.20	1.15	P.M.		4.45	P.M.	8.30
		7.57	*8.03	3.55		155	Wenlock.....		*6.35				5.10		*8.56
1.42		7.35	7.43	3.29		162	North Stratford.....		6.50	1.42			5.35		9.23
		7.23	*7.35	3.16		160	Beatties.....		*6.58				5.48		*9.37
		7.10	7.23	3.01		170	Stratford Hollow.....		7.10				6.05		9.53
1.19		6.53	7.12	2.47		174	Groveton Junction.....		7.17	2.03			6.70		10.09
1.17		6.50	7.10	2.44		175	Groveton.....		7.19	2.05			6.24		10.12
		6.29	6.57	2.26		180	Stark.....		7.30				6.40		10.32
*1.05		6.20	6.50	2.17		183	Starke, W. S.....		7.35				6.50		10.40
		6.00	6.39	2.00		183	West Milan.....		7.46				7.10		*11.00
		5.37	6.25	1.42		193	Copperville.....		7.58				7.32		11.20
12.33		5.12	6.10	1.22		199	Berlin Falls.....		8.11	2.45			7.55		11.40
															p.m.
12.22		4.45	5.55	1.00	P.M.	205	Lve. } GORHAM... { Arr.		8.25	2.56			8.20	A.M.	1.05
12.22		A.M.	5.35	P.M.	10.00	205	Arr. } GORHAM... { Lve.		8.40	2.56			P.M.	3.45	12.30
12.11		Mx.	5.20	Mxd	9.40	211	Shelburne.....		8.53	3.06				4.04	12.47
12.01			5.04		9.22	217	Gilead.....		9.05					4.22	1.07
p.m.															
11.51			4.46		9.02	223	West Bethel.....		9.17	3.25				4.41	1.27
11.44			4.35		8.48	227	Bethel.....		9.27	3.31				4.53	1.40
11.33			4.23		8.33	232	Locke's Mills.....		9.37					5.08	1.55
11.27			4.13		8.22	235	Bryant's Pond.....		9.45	3.44				5.20	2.07
11.15			3.55		8.02	241	West Paris.....		10.00	3.55				5.39	2.27
11.30			3.38		7.35	250	SOUTH PARIS.....		10.17	4.07	a.m.	p.m.	P.M.	6.05	2.55
10.15	10.55	2.50	3.30	4.05	7.30	250	Arr. SOUTH PARIS. Lve.		6.10	10.20	11.05	3.00	3.35	4.10	7.35
10.10	10.50	2.45	3.25	4.00	7.25	251	Lve. NORWAY.....Arr.		6.15	10.25	11.10	3.05	3.40	4.15	7.40
10.48			3.17		7.13	256	Oxford.....		10.30				Pass	6.23	3.17
10.40			3.04		6.55	261	Mechanic Falls.....		10.40	4.23				6.36	3.42
10.32		P.M.	2.53	P.M.	6.43	265	Empire Road.....		*10.52		A.M.	P.M.	P.M.	6.47	4.08
11.15	8.3	2.00		6.43		0	Lewiston.....	p.m	10.10	4.20	7.15	2.00	.20	7.12	4.59
11.13	8.3	1.58		6.41		1	Auburn.....		10.12	4.22	7.17	2.02	4.22	7.10	4.52
11.00	8.2	1.47		6.30		5	Lewiston Junc.....	a.m	10.25	4.32	7.27	2.12	4.32	6.55	5.04
10.28	8.20	1.47	2.47	6.30	6.35	267	Lewiston Junc.....		10.57	4.33	7.27	2.12	4.45	7.37	5.05
A.M.	A.M.	P.M.	P.M.	P.M.	P.M.										



**MONTREAL, QUEBEC, PORTLAND AND BOSTON.—Continued.**

GOING WEST.							STATIONS.	GOING EAST.						
Pass.	Pass	Fass.	Pass	Pass	Mxd	Mis.		Pass.	Pass	Pass.	Pass.	Mxd	Mxd	Mxd
A.M.	A.M.	P.M.	P.M.	P.M.	P.M.			A.M.	P.M.	A.M.	P.M.	P.M.	A.M.	P.M.
.....	7.52	.....	2.10	6.03	5.12	282	North Yarmouth.....	11.23	.....	7.52	*2.43	5.12	8.31	6.23
.....	7.59	.....	2.18	6.10	5.30	278	Pownal.....	11.22	.....	7.45	*2.37	5.06	8.18	6.10
10.15	8.06	.....	2.30	6.16	5.46	274	New Gloucester.....	11.12	.....	7.38	*2.30	4.58	8.06	5.46
10.23	8.15	1.42	2.43	6.27	6.05	269	DANVILLE JUNCTION.....	11.01	4.37	7.31	2.17	4.50	7.43	5.18
9.55	7.47	1.14	2.03	5.58	4.40	283	Yarmouth Junction.....	11.35	.....	7.58	2.50	5.17	8.42	6.35
9.52	7.45	1.12	2.00	5.56	4.27	286	Yarmouth.....	11.38	.....	8.00	2.52	5.19	8.45	6.37
.....	7.39	.....	1.53	5.52	4.30	288	Cumberland.....	*11.43	.....	8.05	*2.57	*5.24	8.55	6.50
9 41	7.32	.....	1.45	5.45	4.15	291	Falmouth.....	11.51	*5.08	*8.13	*3.02	5.29	*9.08	7.04
.....	*7.27	.....	*1.36	*5.38	.....	295	Deering.....	P.M.	.....	*8.18	.....	5.34	*9.18	*7.12
.....	.....	.....	1.33	5.36	.....	295	Portland & R. June.....	12.02	.....	.....	.....	.....	.....	.....
9.30	7.20	12.50	1.30	5.30	3.50	297	<b>Portland.</b> .....	12.05	5.18	8.25	*3.15	5.40	9.30	7.30
.....	.....	p.m.	p.m.	.....	.....	.....	<b>Boston, R. &amp; M.</b> {	P.M.	P.M.	P.M.	P.M.	P.M.	A.M.	P.M.
.....	.....	9.00	9.00	12.30	.....	.....	Leave	{ Arr.	4.45	9.23	1.15	.....	9.23	.....
A.M.	A.M.	A.M.	A.M.	P.M.	P.M.									

Note (c).—Leaves Island Pond daily except Sunday. Note (c) Saturday night train remains over Sunday at Island Pond.  
 A train leaves Lewiston Junction at 11.00 a.m., arriving at Auburn at 11.13 and Lewiston at 11.15. Connecting at Lewiston Junction with train leaving Island Pond at 6.20 a. m.

**MONTREAL AND OTTAWA.**

Mis.	STATIONS.	Express.	Express.	Mis.	STATIONS.	Express.	Express.
00	Montreal.....Lv.	8.50a.m.	4.30p.m.	0	Ottawa.....Lv.	8.00a.m.	4.50p.m.
20	55 St. Anne.....	*9.27	*5.07	11	Eastman's Springs..	8.21	5.09
24	25 Vaudreuil.....	*9.35	*5.15	22	South Indian.....	8.39	5.26
37	48 Coteau.....	10.00	5.40	29	Casselman.....	8.52	5.39
41	00 St. Polycarpe.....	10.09	5.49	43	Maxville.....	9.15	6.02
52	00 Glen Robertson.....	10.28	6.08	48	Greenfield.....	9.23	6.12
60	00 Alexandria.....	10.44	6.24	55	Alexandria.....	9.39	6.28
67	00 Greenfield.....	10.57	6.27	63	Glen Robertson.....	9.53	6.41
71	00 Maxville.....	11.06	6.46	74	St. Polycarpe.....	10.12	7.00
85	00 Casselman.....	11.29	7.09	78	Coteau.....	10.20	7.06
92	00 South Indian.....	11.42	7.22	91	Vaudreuil.....	*10.48	*7.32
1 02	Eastman's Springs	12.01p.m.	7.41	94	St. Anne.....	10.55	*7.40
16	50 Ottawa.....Ar.	12.35p.m.	8.15p.m.	116	Montreal.....Ar.	11.30a.m.	8.20p.m.

**CANADA PAPER CO'Y,**

Paper Makers & Wholesale Stationers,

572 to 582 Craig Street, MONTREAL,

11 Front Street West, TORONTO.

MILLS : Windsor Mills, Springvale Mills.

MANUFACTURERS OF

Writing, Book, Envelope, News and Coloured Papers,

WRAPPING PAPERS, ENVELOPES, &c., &c.

Building Board, Carpet and Roofing Felt in stock.

Agents for Fleming's (Edinburgh) Printing Inks and  
 Marinoni (Paris) Printing Presses.

# GRAND TRUNK RAILWAY MAIN LINE.

GOING EAST.								STATIONS.	GOING WEST.							
Chicago and Detroit, to Toronto and Montreal.									Montreal to Toronto, Detroit and Chicago.							
Pass.	Exp.	Exp.	E	x	Pass	Pass	Mxd		Mis.	Pass	Mxd.	Pass.	Pass.	Pass.	Pass	
A.M.	P.M.	A.M.	A.M.	A.M.	P.M.	P.M.			Arrive	Leave	P.M.	P.M.	A.M.	P.M.	P.M.	P.M.
9.27	8.30	3.00	9.00	8.25	5.40	6.35	0		<b>Montreal</b> .....		6.20	1.00	9.00	9.00	11.55	5.00
9.32	.....	.....	8.55	8.20	5.35	6.25	2		Lachine Junction.....		6.25	1.07	9.05	9.05	.....	5.05
9.18	.....	.....	8.44	8.06	5.20	6.05	7½		Jacques Cartier.....		6.37	1.27	.....	.....	.....	5.20
9.10	.....	.....	.....	.....	5.05	.....	.....		<b>St. Laurent,</b>		.....	.....	.....	.....	.....	.....
A.M.	.....	.....	.....	.....	P.M.	.....	.....		via U. J. C. Ry. ....		.....	.....	.....	.....	.....	.....
.....	.....	.....	8.38	8.00	.....	*5.56	10		Dorval.....		6.44	*1.36	.....	.....	.....	5.27
.....	.....	.....	8.32	7.53	.....	.....	12½		Valoisville.....		6.48	.....	.....	.....	.....	5.35
.....	8.02	.....	8.23	7.49	.....	5.40	24½		Pte. Claire.....		6.53	1.50	9.35	*9.30	.....	5.40
.....	.....	.....	8.24	7.44	.....	.....	15½		Beaconsfield.....		6.55	.....	.....	.....	.....	5.43
.....	7.51	.....	8.15	7.34	.....	.....	20½		Ste. Annes.....		7.07	2.10	9.48	*9.43	.....	5.56
.....	7.43	.....	8.06	7.25	.....	.....	24½		Vaudreuil.....		7.15	2.24	9.56	9.51	.....	6.07
.....	.....	.....	7.54	A.M.	.....	.....	29		Cedars.....		.....	.....	.....	.....	.....	6.20
.....	7.30	.....	7.50	.....	.....	4.22	31		St. Dominique.....		.....	2.47	10.12	.....	.....	6.28
.....	.....	.....	7.43	.....	.....	.....	34½		Riviere Rouge.....		.....	.....	.....	.....	.....	6.30
.....	7.17	6.37	7.36	.....	.....	3.55	37½		Coteau Junction.....		.....	3.08	10.25	10.17	.....	6.44
.....	.....	.....	7.32	.....	.....	.....	39½		St. Zotique.....		.....	.....	.....	.....	.....	6.48
.....	.....	.....	.....	.....	.....	.....	16		<b>Ottawa, via C. A. R.</b>		.....	.....	.....	.....	A.M.	.....
.....	7.00	.....	7.24	.....	.....	3.30	43		Riviere Beaudette.....		.....	3.30	10.37	10.30	1.17	7.00
.....	.....	.....	*7.12	.....	.....	*3.05	48½		Bainsville.....		.....	*3.48	.....	.....	.....	*7.12
.....	6.39	.....	7.00	.....	.....	2.40	53½		Lancaster.....		.....	4.10	11.00	10.52	.....	7.25
.....	6.27	.....	6.47	.....	.....	2.15	59½		Summerstown.....		.....	4.32	*11.13	.....	.....	7.40
.....	6.10	5.33	6.30	.....	.....	1.39	67½		Lve } CORNWALL { Ar		.....	5.01	11.30	11.18	2.02	6.60
.....	6.00	5.33	A.M.	.....	.....	1.39	67½		Ar } { Lv		.....	5.01	11.45	11.18	2.02	.....
.....	5.49	.....	.....	.....	.....	1.17	72½		Millie Roches.....		.....	5.21	*11.56	.....	.....	.....
.....	5.40	5.12	.....	.....	.....	.....	12.55	7	Wales.....		.....	5.40	12.07	11.40	2.21	.....
.....	5.26	.....	.....	.....	.....	.....	12.35	1½	Farran's Point.....		.....	*5.58	.....	.....	.....	.....
.....	.....	.....	.....	.....	.....	.....	12.22	83½	Aultsville.....		.....	6.05	12.22	.....	.....	.....
.....	5.10	4.40	.....	.....	.....	.....	11.48	92½	Morrisburg.....		.....	6.38	12.42	12.10	.....	.....
.....	4.57	*4.25	.....	.....	.....	.....	11.20	99	Iroquois.....		.....	7.04	12.57	12.24	.....	.....
.....	4.47	.....	.....	.....	.....	.....	10.56	104½	Cardinal.....		.....	7.25	1.11	.....	.....	.....
.....	4.30	3.55	.....	.....	.....	.....	10.19	112	Lve } PRESCOTT		.....	8.00	1.32	12.55	3.28	.....
.....	4.30	3.55	.....	.....	.....	.....	10.19	112	Ar } { Lv		.....	8.25	1.48	.....	3.40	.....
.....	4.17	3.40	.....	.....	.....	.....	9.52	120½	Maitland.....		.....	8.45	2.00	1.20	3.50	.....
.....	4.05	3.25	.....	.....	.....	.....	9.30	125	Lv } BROCKVILLE. { Ar		.....	5.30	2.05	1.20	3.50	.....
.....	4.00	3.25	.....	.....	.....	.....	9.15	125	Ar } { Lv		.....	.....	.....	.....	.....	.....
.....	7.00	7.25	.....	.....	.....	.....	.....	.....	<b>Ottawa,</b>		.....	.....	A.M.	.....	.....	.....
.....	P.M.	A.M.	.....	.....	.....	.....	.....	.....	Arr. via C. P. R. ....		.....	.....	10.00	8.30	.....	.....
.....	3.51	.....	.....	.....	.....	.....	9.01	120½	Lyn.....		.....	5.45	2.18	.....	.....	.....
.....	3.31	.....	.....	.....	.....	.....	8.32	137½	Mallorytown.....		.....	6.17	2.43	.....	.....	.....
.....	3.10	.....	.....	.....	.....	.....	8.03	3146	Landsdowne.....		.....	6.45	3.10	.....	.....	.....
.....	2.25	1.45	.....	.....	.....	.....	6.35	.....	Lve GANANOQUE. Arr		.....	7.45	4.05	3.00	.....	.....
.....	3.05	3.00	.....	.....	.....	.....	7.40	.....	Ar via T. I. R'y. Lve		.....	6.50	3.10	1.45	.....	.....
.....	2.53	2.20	.....	.....	.....	.....	7.31	155	Gauanoque Junction..		.....	7.21	3.29	2.20	.....	.....
Mxd	.....	.....	.....	.....	.....	.....	7.07	162½	Balfantyne's.....		.....	7.50	*3.46	.....	.....	.....
A.M.	2.15	1.40	.....	P.M.	.....	6.30	172½		Lv } KINGSTON { Ar		.....	A.M.	8.30	4.10	2.55	5.15
10.00	1.55	1.40	.....	6.45	11.15	A.M.	180		Ar } { Lv		.....	7.00	8.30	4.10	2.55	5.15
9.32	1.40	.....	.....	6.17	10.50	.....	180		Collin's Bay.....		.....	7.25	8.51	*4.25	.....	.....
9.05	1.25	.....	.....	5.47	10.23	.....	137½		Ernestown.....		.....	*7.52	9.13	4.41	.....	.....
*8.47	*1.13	.....	.....	*5.24	10.02	.....	193½		Fredericksburg.....		.....	8.12	9.30	*4.53	.....	.....
8.30	1.02	12.47	.....	5.03	9.45	.....	198½		Napanee.....		.....	8.30	9.45	5.03	3.48	6.05
6.40	.....	.....	.....	3.15	.....	.....	.....		Lv } TAMWORTH { Ar		.....	2.50	.....	7.05	.....	.....
.....	2.50	.....	.....	7.05	.....	.....	.....		Ar } via N.T. Q.E. { Lv		.....	6.40	.....	3.15	.....	.....
8.10	12.51	12.36	.....	4.42	9.23	.....	203½		Deseronto Junction..		.....	8.51	10.05	5.15	3.59	.....
7.45	12.25	12.05	.....	4.00	9.00	.....	.....		Lv Deseronto, Ar		.....	9.20	10.30	5.35	4.20	.....
9.20	1.15	1.00	.....	5.00	10.30	.....	.....		Ar via B. of Q. R'y. Lv		.....	7.45	9.00	4.45	3.30	.....
7.55	12.44	.....	.....	4.29	9.10	.....	206½		Marysville.....		.....	9.04	10.17	5.22	.....	.....
7.30	12.30	.....	.....	4.00	8.44	.....	213		Shannonville.....		.....	9.31	10.42	5.35	.....	.....
7.00	12.15	12.01	.....	3.35	8.15	.....	.....		Lv } { Ar		.....	10.00	11.10	5.50	4.35	6.47
A.M.	.....	A.M.	.....	P.M.	.....	.....	229½		Ar } BELLEVILLE. { Lv		.....	12.05	.....	5.55	4.35	.....
.....	12.06	11.55	11.45	.....	8.00	.....	.....		.....		.....	.....	.....	.....	.....	.....
.....	P.M.	M.	A.M.	.....	P.M.	.....	.....		.....		.....	.....	.....	.....	.....	.....

# LICORICE.

---

We would call the attention of the public to our

## Licorice Preparations

Which we enumerate below, and which have been found superior to anything in the drug or confectionery line for

### COUGHS, COLDS OR SORE THROATS.

---

They have been especially manufactured to meet all demands of the trade and are strictly guaranteed for **PURITY**, freedom from grittiness—so obnoxious in foreign brands—and every other objectionable feature usually found in the average Licorice Preparation. Our experience of **FORTY ODD YEARS** has certainly enabled us to know the wants of the trade and how to supply them, and the fact of our productions being found in almost every city and hamlet in North America testifies to their universal popularity and usefulness.

Ask your druggist, confectioner or grocer for these goods and satisfy yourself that they are Just as represented.

**"Y. & S. Brand," Pure Calabria Licorice.**

**Ringed Licorice, Pure Calabria.**

**Acme Licorice Pellets.**

**Tar, Licorice and Tolu Wafers.**

**Licorice (Y. & S. brand) Lozenges.**

MANUFACTURED EXCLUSIVELY BY

## YOUNG & SMYLIE,

58, 60, 62 and 64 South 5th St.,

BROOKLYN, NEW YORK.

# GRAND TRUNK RAILWAY MAIN LINE.

GOING EAST.							STATIONS.	GOING WEST.							
Chicago and Detroit, to Toronto and Montreal.								Montreal to Toronto, Detroit and Chicago.							
Mxd	Exp.	Exp.	Exp.	.....	Pass	Mxd		Mls.	Mxd	Mxd	Pass.	Pass.	Pass.	Pass.	
	A.M.	P.M.	A.M.		P.M.			P.M.	P.M.	P.M.	A.M.	A.M.			
.....			11.30		7.38	.....	2263	Sidney .....	12.27	.....	6.10	.....	.....		
.....		11.32	11.18		7.18	.....	232	Trenton .....	12.45	.....	6.23	5.00	.....		
.....					*6.55	.....	238	Smithfield .....	*1.05	.....	.....	.....	.....		
.....			11.15		6.45	.....	241	Brighton .....	1.17	.....	6.45	5.20	.....		
.....			11.00		6.20	.....	249	Colborne .....	1.43	.....	7.02	5.37	.....		
.....			10.47		5.59	.....	255	Grafton .....	2.05	.....	7.17	*5.50	.....		
.....			10.50		5.35	.....	263	Lv } COBOURG.. { Arr.	.....	.....	.....	8.15	A.M.		
.....			10.50		5.25	.....	263	Ar } Lvc.	2.32	.....	7.35	6.07	8.15	7.15	
.....			10.38		5.15	.....	270	PORT HOPE .....	2.55	.....	7.50	6.07	8.30	7.31	
.....					4.50	.....	278	Newtonville .....	3.20	.....	8.05	6.22	.....	7.49	
.....					4.23	.....	286	Newcastle .....	3.48	.....	8.20	.....	9.07	8.08	
.....			10.03		4.05	.....	290	Bowmanville .....	4.05	.....	8.35	.....	9.16	8.20	
.....					3.54	.....	293	Darlington .....	*4.13	.....	8.45	7.06	.....	*8.27	
.....			9.45		3.30	.....	299	Oshawa .....	4.32	.....	.....	.....	.....	8.42	
.....			9.42		3.13	.....	303	Whitby Junction .....	4.45	.....	9.03	7.20	9.42	8.51	
.....					2.48	.....	309	Pickering .....	5.10	.....	9.13	*7.35	.....	9.03	
.....			9.18		2.20	.....	316	Port Union .....	5.37	.....	9.27	8.05	.....	9.18	
.....					1.50	.....	324	Scarboro Junction .....	6.05	.....	9.45	.....	.....	9.36	
.....			9.00		1.35	.....	326	York .....	6.15	.....	10.05	.....	.....	.....	
.....					1.13	.....	331	Don .....	6.27	.....	10.27	.....	.....	9.57	
.....			8.35		1.00	.....	333	Lv } TORONTO.. { Arr.	6.40	.....	10.40	9.00	11.00	10.10	
.....			A.M.		9.45	.....	333	Ar } Lvc.	A.M.	P.M.	P.M.	A.M.	P.M.	P.M.	
.....			8.10		9.45	.....	333	North Parkdale .....	7.10	6.35	*11.23	8.02	1.08	4.08	
.....					9.38	.....	344	Carlton .....	7.15	6.40	11.30	8.12	1.15	4.15	
.....					9.31	.....	338	Weston .....	7.25	6.50	11.39	8.20	1.23	4.26	
.....					9.23	.....	341	Malton .....	.....	7.12	11.55	8.37	1.38	4.45	
.....					9.07	.....	358	Brampton .....	.....	7.33	12.10	8.48	1.52	5.03	
.....			7.32		8.48	.....	354	Norval .....	.....	7.53	12.22	9.07	*2.08	5.18	
.....					8.37	.....	359	Georgetown .....	.....	8.01	12.28	9.13	2.09	5.26	
.....					8.29	.....	362	Junction .....	.....	8.04	.....	9.16	2.12	5.29	
.....					8.27	.....	362	Limchouse .....	.....	8.14	.....	9.22	.....	5.36	
.....					8.18	.....	365	Acton West .....	.....	8.24	12.45	9.30	2.23	5.45	
.....					8.10	.....	368	Rockwood .....	.....	8.44	12.59	9.44	2.36	6.00	
.....					7.53	.....	374	GUELPH .....	.....	9.10	1.16	10.03	2.52	6.17	
.....			6.46		7.30	.....	381	Guelph Junction .....	.....	.....	.....	10.20	2.57	6.24	
.....					7.30	.....	382	Mosborough .....	.....	.....	.....	10.29	.....	6.30	
.....					7.20	.....	386	Breslau .....	.....	.....	.....	10.41	.....	6.42	
.....					7.05	.....	391	Berlin .....	.....	A.M.	1.50	10.51	3.23	6.53	
.....					7.05	.....	395	Waterloo .....	.....	9.40	4.25	10.25	6.30	7.05	
.....					6.55	.....	395	Lvc } Berlin... { Arr.	.....	9.45	4.35	10.35	6.40	7.15	
.....					6.55	.....	395	Ar } Lvc.	.....	.....	.....	10.52	.....	7.15	
.....					6.40	.....	402	Doon .....	.....	.....	.....	11.10	.....	7.30	
.....					6.30	.....	404	Blair .....	.....	.....	.....	11.20	.....	7.35	
.....					6.20	.....	404	Blair .....	.....	.....	.....	11.40	.....	7.45	
.....					6.10	.....	405	Petersburg .....	.....	.....	*2.06	11.07	3.37	7.10	
.....					6.00	.....	407	Raden .....	.....	.....	.....	11.15	3.45	7.18	
.....					5.55	.....	414	Hamburg .....	.....	.....	2.19	11.21	3.50	7.25	
.....					5.45	.....	414	Shakespeare .....	.....	.....	2.37	11.38	4.05	7.40	
.....					5.35	.....	421	Stratford Junction .....	.....	.....	.....	.....	.....	.....	
.....					5.25	.....	421	Lvc } STRATFORD.. { Ar.	.....	.....	2.55	11.55	4.20	7.55	
.....					5.15	.....	421	Ar } Lvc.	.....	A.M.	7.35	3.05	12.10	4.30	8.00
.....					5.05	.....	421	STRATFORD .....	10.10	.....	.....	.....	4.30	8.00	
.....					4.55	.....	426	St. Paul's .....	10.19	.....	.....	.....	.....	8.12	
.....					4.45	.....	431	St. Mary's .....	10.30	.....	.....	.....	4.50	8.25	
.....					4.35	.....	438	Kelley's Siding .....	10.40	.....	.....	.....	5.05	8.35	
.....					4.25	.....	443	Thorndale .....	11.00	.....	.....	.....	5.15	8.50	
.....					4.15	.....	454	LONDON .....	11.25	.....	.....	.....	5.40	9.10	
.....					4.05	.....	426	St. Paul's .....	.....	7.55	.....	.....	.....	8.12	
.....					3.55	.....	431	St. Mary's .....	.....	8.20	3.30	12.18	4.45	8.25	
.....					3.45	.....	441	Granton .....	.....	8.52	*3.55	12.30	5.01	.....	
.....					3.35	.....	446	Lucan .....	.....	9.12	4.11	12.48	5.10	.....	
.....					3.25	.....	450	Lucan Crossing .....	.....	9.20	.....	1.00	5.15	.....	
P.M.	A.M.	P.M.			A.M.										

## GRAND TRUNK RAILWAY, MAIN LINE.

GOING EAST.								STATIONS.	GOING WEST.					
Chicago and Detroit to Toronto and Montreal.									Montreal to Toronto, Detroit and Chicago.					
Mxd.	Exp.	Exp.	Exp.	Pass.	Mxd.	Mls			Mxd	Mxd.	Pass.	Pass.	Pass	Pass
7.25	4.30	2.20	.....	.....	7.00	453	Alisa Craig .....	Sundays only from Mount Clemens	A.M.	A.M.	P.M.	P.M.	.....	
7.05	.....	2.03	.....	.....	6.31	461	Park Hill ... ..		0.35	4.30	.....	.....	5.24	.....
6.40	.....	1.47	.....	.....	6.01	470	Thedford .....		9.55	4.48	1.14	1.30	5.56	.....
6.15	.....	1.27	.....	.....	5.30	479	Forest .....		10.20	5.08	1.47	1.47	6.15	.....
5.55	.....	.....	.....	.....	5.10	484	Aberarder .....		10.45	5.30	.....	2.06	.....	.....
5.45	.....	1.08	.....	.....	4.59	488	Cambridge .....		10.55	.....	6.48	2.23	6.32	.....
5.17	.....	.....	.....	.....	4.33	496	Blackwell .....		11.10	.....	.....	2.39	.....	.....
5.00	3.10	12.40	.....	.....	4.15	501	SARNIA (Pt. Edward)..		11.32	.....	6.15	2.50	7.00	.....
P.M.	.....	P.M.	.....	.....	A.	.....	<b>Port Huron (Ft. St.),</b>		.....	.....	.....	.....	.....	.....
.....	1.10	10.25	6.50	.....	.....	.....	From " for Detroit		.....	11.00	7.10	3.50	6.50	.....
.....	1.36	7.55	.....	.....	.....	.....	From " " Chicago	.....	P.M.	7.55	.....	7.55	.....	
.....	A.M.	.....	.....	.....	.....	.....	<b>Detroit.... Arrive</b>	P.M.	5.25	3.00	9.40	6.10	9.10	.....
.....	11.00	8.00	4.20	10.00	.....	561	<b>Chicago, via B &amp; O &amp;</b>	.....	.....	P.M.	.....	A.M.	.....	
.....	.....	a.m.	.....	.....	.....	842	W B Ry	.....	.....	9.45	.....	8.30	.....	
10.05	3.45	.....	P.M.	.....	.....	.....	" via C & G T R	.....	.....	6.30	.....	8.10	.....	
.....	b3.25	.....	.....	.....	.....	837	Lve. Arrive	.....	.....	.....	.....	.....	.....	
P.M.	P.M.	.....	A.M.	.....	.....	.....		.....	.....	.....	.....	.....	.....	

*Note [a]—Runs daily, Sunday included and stops at all stations between Belleville and Kingston, Sunday a.m.*

*Note [b]—Train leaving Chicago at 3.25 p.m., via C. & G. T. Ry on Saturdays remains over Sunday at Toronto, leaving at 8.00 p.m., arriving at Montreal 8.00 a.m. connecting with C. V. R. train for Boston and New York.*

*Note [a]—Runs daily, Sundays included, Montreal to Toronto, connecting at Toronto with train for Hamilton and West, via G. W. Division,*

*Note b Saturday night train runs through to Detroit Sunday A.M.*

A train leaves Montreal every Saturday at 2 o'clock p.m. for Vaudreuil, it arrives at Lachine, J.C. 2.05 Jacques Cartier 2.17, Dorval 2.23, Valoisville 2.28, St. Clair 2.32, Beaconsfield 2.35, Shannex 2.46, Vaudreuil .55.



**MONTREAL TO BOSTON AND NEW YORK.**  
**ROUSE'S POINT & ST. JOINS TO MONTREAL.**

Sat'y only.	STATIONS.								Lve.	Pass.	Pass.	Pass.	Pass.	Pass.	Pass.	
	Mixed	Pass.	Pass.	Pass.	Pass.	Milg.	A.M.	A.M.							A.M.	Mixed
.....	.....	P.M.	10.30	7.55	A.M.	11.45	0	.....	.....	.....	.....	.....	.....	.....	.....	.....
.....	.....	P.M.	9.03	.....	.....	.....	6 1/2	.....	.....	.....	.....	.....	.....	.....	.....	.....
.....	.....	.....	.....	.....	.....	.....	10 1/2	.....	.....	.....	.....	.....	.....	.....	.....	.....
.....	.....	.....	.....	.....	.....	.....	16 1/2	.....	.....	.....	.....	.....	.....	.....	.....	.....
P.M.	.....	.....	.....	.....	.....	.....	23	.....	.....	.....	.....	.....	.....	.....	.....	.....
3.00	.....	.....	.....	.....	.....	.....	29 1/2	.....	.....	.....	.....	.....	.....	.....	.....	.....
2.38	.....	.....	.....	.....	.....	.....	38	.....	.....	.....	.....	.....	.....	.....	.....	.....
1.55	.....	.....	.....	.....	.....	.....	43 1/2	.....	.....	.....	.....	.....	.....	.....	.....	.....
1.30	.....	.....	.....	.....	.....	.....	50	.....	.....	.....	.....	.....	.....	.....	.....	.....

**MONTREAL TO ST. JOHNS & ROUSE'S POINT.**  
**RICHMOND AND QUEBEC DISTRICT.**

Exp's	Exp's	STATIONS.		Expres.	Pass.	A.M.	Lve.	A.M.	Mixed.	Mils.	STATIONS.		A.M.	Mixed.
		Mils.	Mixed.								Mils.	Mixed.		
.....	.....	.....	.....	.....	.....	.....	.....	.....	.....	.....	.....	.....	.....	.....
.....	.....	.....	.....	.....	.....	.....	.....	.....	.....	.....	.....	.....	.....	.....
.....	.....	.....	.....	.....	.....	.....	.....	.....	.....	.....	.....	.....	.....	.....
.....	.....	.....	.....	.....	.....	.....	.....	.....	.....	.....	.....	.....	.....	.....
.....	.....	.....	.....	.....	.....	.....	.....	.....	.....	.....	.....	.....	.....	.....
.....	.....	.....	.....	.....	.....	.....	.....	.....	.....	.....	.....	.....	.....	.....
.....	.....	.....	.....	.....	.....	.....	.....	.....	.....	.....	.....	.....	.....	.....
.....	.....	.....	.....	.....	.....	.....	.....	.....	.....	.....	.....	.....	.....	.....
.....	.....	.....	.....	.....	.....	.....	.....	.....	.....	.....	.....	.....	.....	.....
.....	.....	.....	.....	.....	.....	.....	.....	.....	.....	.....	.....	.....	.....	.....

**ARTHABASKA AND THREE RIVERS BRANCH.**

Mils.	STATIONS.	Mils.	STATIONS.	Mils.	STATIONS.	Mils.	STATIONS.
.....	.....	.....	.....	.....	.....	.....	.....
.....	.....	.....	.....	.....	.....	.....	.....
.....	.....	.....	.....	.....	.....	.....	.....
.....	.....	.....	.....	.....	.....	.....	.....
.....	.....	.....	.....	.....	.....	.....	.....
.....	.....	.....	.....	.....	.....	.....	.....
.....	.....	.....	.....	.....	.....	.....	.....
.....	.....	.....	.....	.....	.....	.....	.....

Train leaving Point Levi 8.30 p.m. for Montreal and Portland runs through to Montreal Sunday, a.m., and remains over Sunday at Island Pond.



BOWMANVILLE.

**RUEBOTOM  
HOUSE.**

**"SUNBEAMS!"**

\$1.00 Per Dozen!

**"Stanton's Sunbeams"**

IS THE

name of a delightful little Photo-  
graph—just the thing to present to  
your friends. Call and see them.

**STANTON,**

THE PHOTOGRAPHER,

134 Yonge Street, Toronto.

**J. FRASER BRYCE,**

PHOTOGRAPHER,

**107 King St. West, Toronto.**



D. PIKE

MANUFACTURER OF

TENTS, AWNINGS AND FLAGS.

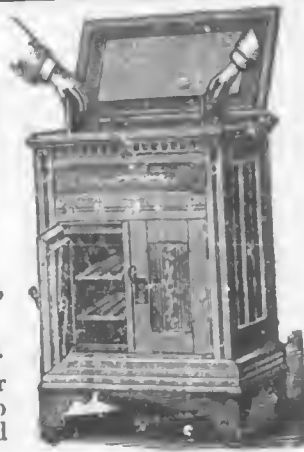
Horse and Waggon Covers; Life Preservers, Etc.

157 King-st. East Toronto, Ont.

TENTS TO RENT.

GET THE BEST!

THE LEONARD  
CLEANABLE  
REFRIGERATORS!



Made in Hardwood. Elegantly carved, with Treble Walls, Charcoal Filled and Zinc Lined.

Every part removable for cleanliness.

All Metal Shelves, Air-Tight Locks, Improved Interior Circulation of Dry Cold Air, and First-class Workmanship throughout. Warranted not to sweat; to keep ice and food longer than any other, and to give perfect satisfaction.

These are the Only Refrigerators with Five Walls for the preservation of the ice.

They are the Only Refrigerators having the Leonard Patent Air-Tight Locks.

They are the Only Refrigerators having the Leonard Patent Solid Iron Shelves.

They are the Only Refrigerators having the Leonard Patent Arched Centre False Bottom.

They are the Only Refrigerators having the Leonard Patent Movable Flues for Cleaning.

They are the Only Refrigerators having the Leonard Improved Interior Circulation of Dry Cold Air.

They have stood the test of years, and are the ONLY REFRIGERATORS which EXCEL ALL OTHERS at every point.

A slight examination will convince you of their great superiority. We challenge the world to produce their equal at any price.

H. A. COLLINS, - - - - Canadian Agent,

90 YONGE STREET, TORONTO.



PATENTS Procured in Canada, the United States, and all Foreign Countries, Caveats, Trade-Marks, Copyrights, Assignments, and all Documents relating to PATENTS prepared on the shortest notice. All information pertaining to Patents cheerfully given on application. ENGINEERS, PATENT ATTORNEYS, and Experts in all Patent Causes. Established 1867.

Donald C. Ridout & Co. 22 King St. East, Toronto



## GEORGIAN BAY AND LAKE ERIE DIVISION.

	Express.	Express	Mixed.	Mls	STATIONS.		Exp.	Exp	Mix.
					Arrive.	Leave.			
		7.15 pm	1.45 pm	0	PORT DOVER		7.45		2.15
		3.50 "	8.55 pm	62.4	Lve. } STRATFORD	9.10 am { Arr	11.40		7.10
6.40	10.08 am	3.30 "			Arr. }		12.05	7.10	
6.30	10.02 "	3.23 "		76.4	Stratford Junction	9.20 "	12.13	7.20	
5.30	9.30 "	2.51 "		78.0	Milverton	10.30 "	12.45	7.52	
5.10	9.21 "	2.42 "		78.9	Millbank	10.55 "	12.53	8.00	
4.15	8.52 "	2.12 "		89.0	LISTOWEL	12.05 "	1.20	8.25	A.M.
3.25	8.30 "	1.50 "	8.05 "	98.4	PALMERSTON	12.35 pm	2.00	8.50	6.00
Mixed	8.20 "		7.50 pm		PALMERSTON		1.55	8.55	
	7.50 "		7.10 "	11	Mount Forest		2.35	9.25	
	7.35 "		6.45 "	17	Holstein		3.00	9.40	
	7.20 "		6.25 "	22.5	Varney		3.17	9.55	
	7.10 "		6.10 "	26.5	DURHAM		3.30	10.05	
	8.01 "	1.05 "	7.50 "	103.5	Harriston		2.15	9.05	6.30
	7.35 "	12.25 "	6.55 "	113.6	Ayton		2.45	9.33	7.35
	7.26 "	12.10 "	6.30 "	117.4	Neustadt		2.55	9.43	7.55
	7.11 "	11.45 "	3.00 "	123.7	Hanover		3.10	10.00	8.25
	6.55 "	11.20 "	5.30 "	130.0	Elmwood		3.25	10.15	8.50
	6.45 "	11.05 "	5.05 "	134.4	CHRSLEY		3.36	10.26	9.20
	6.23 "	10.15 "	4.10 "	147.2	Tara		4.10	10.58	10.15
	5.58 "	9.55 "	3.30 "	172.4	Allenford		4.25	11.13	10.33
	5.41 "	9.28 "	2.55 "	159.3	Hepworth		4.50	11.31	11.20
	5.20 am	9.00 am	2.05 pm	166.5	Lev. } WIARTON	Arr.	5.15	11.50	11.55

NOTE.—Train leaving Wiarton at 5.20 a.m. will run only on Mondays, Wednesdays and Fridays between Wiarton and Palmerston. Train leaving Palmerston at 8.55 p.m. will run only on Mondays, Wednesdays and Fridays between Palmerston and Wiarton.

# General Transatlantic Steamship Agency.

CUNARD S. S. LINE,  
MONARCH S. S. LINE,  
BORDEAUX S. S. LINE.

ANCHOR S. S. LINE,  
BEAVER S. S. LINE,  
OCEAN S. S. LINE,

IMMEDIATE TRANSPORTATION CO., (Limited).

For full particulars as to Rates of Passage,  
apply to

## SAM. OSBORNE & Co.,

*General Agents,*

**40 YONGE STREET, TORONTO.**

## BUFFALO AND GODERICH.

BUFFALO TO GODERICH AND DETROIT.				STATIONS.		DETROIT & GODERICH TO BUFFALO.			
Exp.	Exp's	Mix'd.	Mix'd.			Miles.	Pass.	Exp.	Exp's
A.M.		P.M.				P.M.	P.M.	P.M.	
					..... Exchange Street N.Y.L.E. & Buffalo..... W.R.R.				
7.55		4.30		.00	Lv..... Erie Street	1.10	8.45		
8.10		4.45		4.00	Lv..... Black Rock	12.55	8.30		
8.25		5.00		6.02	..... Fort Erie	12.40	8.15		
8.40		5.20		14.12	..... Bertie	12.22	8.01		
8.58		5.40		23.03	..... Port Colborne	12.03	7.45		
*9.10		*5.56		30.53	..... Wainfleet	*11.50	*7.30		
*9.22		*6.08		37.02	..... Stromness	*11.38	*7.15		
9.33		6.20		42.83	..... Dunville	11.25	7.02		
9.45		6.35		50.29	..... Canfield Junction	11.10	6.45		
9.48		6.40		51.08	..... Canfield	11.05	6.40		
		*6.52		55.00	..... Cook's	*10.55			
		6.55		56.04	..... York	10.50			
10.10		7.08		63.58	..... Caledonia	10.40	6.15		
10.25		7.37		72.51	..... Onondaga	10.25	5.55		
		7.37		76.97	..... Cainsville	10.13			
10.43		7.45	P.M.	80.43	Arr } ..... Brantford..... { Arr.	10.07	5.40		
10.43		7.45	1.30		Dep }	10.07	5.35		
11.00		8.03	3.00	88.23	..... Paris	9.50	5.15		
11.15		8.22	3.40	96.71	..... Drumbo	9.30	4.62		
11.25		8.35	4.35	102.98	..... Bright	9.18	4.35		
11.45		8.55	5.05	111.98	..... Tavistock	8.57	4.10		
		9.15	5.40		Ar }	8.40	3.50		
P.M.	P.M.			110.65	..... STRATFORD				
12.01			A.M.		Lv }	8.40	3.25	7.05	
12.10	8.00		5.50	124.68	..... Sebringville	8.25	3.05	6.45	
12.27	8.12		6.10	132.72	..... Mitchell	8.10	2.40	6.15	
1.00	8.30		7.25	134.70	..... Dublin	8.00	2.22	5.45	
1.21	8.44		8.00	144.26	..... Seaforth	7.45	1.48	5.15	
1.48	8.57		9.00	152.88	..... Clinton	7.25	1.05	4.30	
2.20	9.15		10.00	156.25	..... Holmesville		12.30	3.60	
*2.30				165.30	Ar..... Goderich	7.00	12.15	3.30	
3.00	9.45		10.40			A.M.	P.M.	P.M.	

Pullman Sleeping Car from New York to Chicago on express trains daily Sunday included.



337 Pullman Sleeping Car through to New York by trains leaving Chicago at 8.15 and 3.25 p.m. daily.

# THE Toronto Lithographing Co'y

- DO THE -

FINEST

COLOR WORK

IN CANADA.

'Globe' Buildings, TORONTO.

**London, Huron, & Bruce Branch.**

GOING NORTH.			GOING SOUTH.		
Exp.	Mail	Mls.	STATIONS.	Express	Mail.
10.55 am	8.05 pm		Arrive..... WINGHAM... Depart	7.00 am	3.05 pm
10.51 "	8.00 "	1	..... Wingham Junction.....	7.03 "	3.15 "
10.39 "	7.45 "	63	..... Belgrave.....	7.17 "	3.29 "
10.24 "	7.30 "	134	..... Blyth.....	7.32 "	3.44 "
10.15 "	7.20 "	174	..... Londesborough.....	7.41 "	3.52 "
9.55 "	7.00 "	24	..... Clinton.....	8.03 "	4.13 "
9.36 "	6.37 "	307	..... Brucefield.....	8.22 "	4.32 "
9.29 "	6.25 "	343	..... Klppen.....	8.31 "	4.40 "
9.24 "	6.16 "	37	..... Hensall.....	8.37 "	4.46 "
9.14 "	5.56 "	423	..... Exeter.....	8.51 "	4.59 "
9.02 "	5.49 "	471	..... Centralia.....	9.02 "	5.08 "
8.48 "	5.20 "	531	..... Clandebove.....	9.16 "	5.20 "
8.34 "	5.07 "	581	..... Denfield.....	9.30 "	5.30 "
8.23 "	4.55 "	621	..... Alderton.....	9.41 "	5.33 "
8.15 "	4.46 "	661	..... Ettrick.....	9.50 "	5.45 "
8.05 "	4.35 "	691	..... Hyde Park Junction.....	10.00 "	5.50 "
7.55 am	4.25 pm	74	Leave..... LONDON..... Arrive	10.10 "	6.00 "

**BRITISH AMERICAN**  
*Business College*

**Arcade, Toronto.**

This is the leading Commercial College in Canada. Its location is in the business and educational centre of this Province. The course of studies has been specially arranged to give a sound business training.

ARITHMETIC, COMMERCIAL LAW, BOOK-KEEPING, CORRESPONDENCE,  
PENMANSHIP, PHONOGRAPHY, and TYPEWRITING,

practically taught. For Circular, giving full information, address—

**C. O'DEA, Secretary.**



## Wellington, Grey, & Bruce Division.

Mixed		Pass.		Mixed.		Pass.		Mls.		STATIONS.			Pass.		Mixed	
A.M.	P.M.	P.M.	P.M.							Arrive	Depart	Arrive	Depart	A.M.	P.M.	P.M.
11.20	8.35	5.45	.....							Arrive.....	London.....	Depart	6.00	2.20	4.30	
8.55	6.30	5.25	12.12							Arrive.....	Hamilton.....	Depart	9.20	3.10	5.30	
8.05	6.50	3.40	11.20	125						Arrive.....	HARRISEBURG.....	Depart	10.25	4.40	6.35	
7.45	5.30	3.25	11.07	122						.....	Branchton.....	.....	10.39	4.55	6.55	
7.30	5.13	3.10	10.53	116						.....	Galt.....	.....	10.53	5.18	7.15	
7.17	4.57	2.58	10.44	112						.....	Preston.....	.....	11.05	5.25	7.32	
7.00	4.48	2.50	10.33	109						.....	Hespeler.....	.....	11.13	5.40	7.45	
6.30	4.25	2.33	10.22							.....	Guelph Crossing.....	.....	11.40	6.25	.....	
A.M.	4.10	2.15	10.08							Depart.....	GUELPH.....	Arrive	11.35	6.00	8.15	
Acco	3.32	1.35	9.40	88						Arrive.....	.....	Depart	11.45	6.25	p.m.	
.....	3.24	1.25	9.34	85						.....	Elora.....	.....	12.15	6.56	.....	
.....	3.03	10.35	9.18	79						Dep.....	FERGUS.....	Arr.	12.21	7.03	.....	
.....	2.46	.....	9.04	73						Arr.....	.....	Lve.	12.35	7.18	.....	
.....	2.35	.....	8.56	66						.....	Alma.....	.....	12.48	7.32	.....	
P.M.	2.20	.....	8.46	59						.....	Goldstone.....	.....	12.56	7.41	.....	
7.20	2.00	10:00	8.30	52						.....	Rayton.....	.....	1.02	7.52	.....	
7.00	1.05	A.M.	8.15	53						Dep. }	PALMERSTON.....	Arr.	1.25	8.10	a.m.	
6.00	12.50	.....	8.01	40						Arr. }	.....	Dep.	1.30	8.50	8.50	
6.05	12.25	.....	7.46	34						.....	Harriston.....	.....	2.00	9.05	9.37	
4.30	11.58	.....	7.26	32						.....	Clifford.....	.....	2.16	9.21	10.10	
3.45	11.40	.....	7.13	27						.....	Mildmay.....	.....	2.38	9.42	11.00	
3.30	11.15	.....	7.00	24						.....	Walkerton.....	.....	2.53	9.57	11.50	
3.12	11.06	.....	6.54	23						.....	Dunkeld.....	.....	3.03	.....	12.03	
2.30	11.02	.....	6.50	17						.....	Cargill.....	.....	3.09	10.14	12.25	
.....	10.45	.....	6.36	9						.....	Pinkerton.....	.....	3.12	10.17	12.35	
.....	10.15	.....	6.20	4						.....	Paisley.....	.....	3.30	10.32	12.55	
.....	10.00	.....	6.08							.....	Turners.....	.....	3.55	.....	.....	
p.m.	9.35am	.....	6.00am							Dep't	SOUTHAMPTON.....	Arr.	4.35pm	11.15	p.p.n	

The train leaving Southampton at 6.00 a.m. for Palmerston runs on Tuesdays, Thursdays and Saturdays only. Train leaving Palmerston at 8.50 p.m., for Southampton, runs Tuesdays, Thursdays and Saturdays only.

## Kincairdine and Palmersten.

Mls.	STATIONS.	Going north.					STATIONS.	Going South.				
		*Mlx.	Acc.	Exp.	Exp.			*Mlx	Acc.	Mall	Exp.	
0	Palmerston	A.M. 7.00	P.M. 1.40	P.M. 8.20	P.M. 8.20	Kincairdine	P.M. 5.00	A.M. 9.40	A.M. 5.50	A.M. 5.50		
5	Gowanstown	7.20	1.53	8.35	8.35	Ripley	5.35	10.05	6.07	6.07		
9	Listowel	8.53	2.01	8.43	8.43	Lueknow	6.25	10.20	6.24	6.24		
14	Attwood	9.15	2.14	8.58	8.58	Whitechurch	3.50	10.48	6.38	6.33		
18	Henfryn	9.30	2.25	9.10	9.10	Wingham	7.45	11.10	6.50	6.50		
21	Ethel	9.45	2.34	9.20	9.20	Wingham Junet.	8.00	11.15	A.M.	.....		
27	Brussels	10.25	2.49	9.35	9.35	Bluevale	8.12	11.25	.....	7.00		
34	Blue Vale	10.55	3.06	9.51	9.51	Brussels	8.50	11.45	.....	7.15		
37	Wingham June.	11.20	3.15	P.M. 8.10	P.M. 8.10	Ethel	9.20	12.00	.....	7.27		
38	Wingham	11.50	3.20	8.10	10.02	Henfryn	9.30	12.10	.....	7.34		
43	Whitechurch	12.15	p.m. 3.35	8.26	10.15	Attwood	9.50	12.24	.....	7.42		
50	Lueknow	1.05	3.57	8.35	10.31	Listowel	10.25	12.44	.....	7.55		
58	Ripley	1.45	4.19	8.45	10.50	Gowanstown	.....	12.53	.....	8.02		
66	Kincairdine	2.10	4.40	9.25	11.15	Palmerston	10.55	1.10	.....	8.15		
			P.M.	P.M.	P.M.		P.M.	P.M.	.....	A.M.		

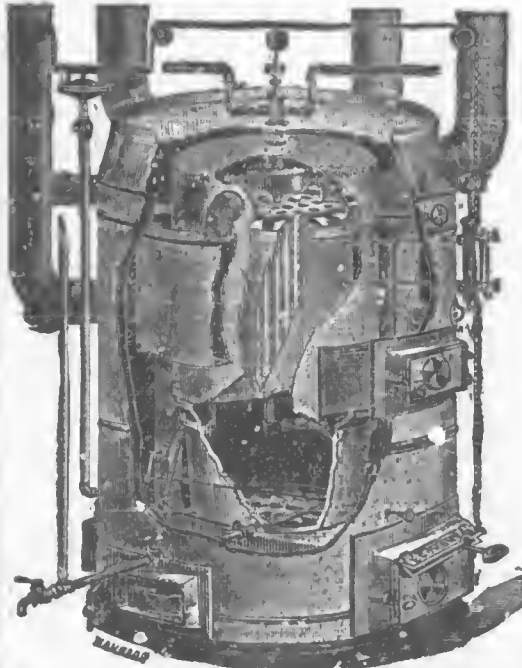
\* Train leaving Palmerston at 8.20, p.m., for Kincairdine runs Tuesdays, Thursdays and Satur. only.

# ECONOMY FURNACE.

Powerful, Economical, Cheap.

## Economy Steam & Warm Air Combination

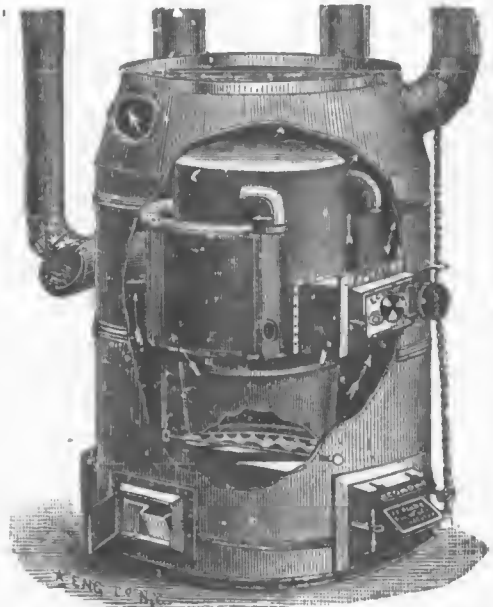
3 SIZES Nos. 10, 14, 18.



This shows our Combination Heater with parts cut away to show internal construction.

## ECONOMY WROUGHT-STEEL Warm Air Furnace.

5 SIZES, Nos. 4, 8, 10, 14, 18.



This shows our Economy Warm Air Furnace which we guarantee free from dust, ashes, or gas.

### THE MOST PERFECT HEATER IN THE WORLD

For Dwellings, Churches, Schools, Stores, Banks or Public Buildings. Estimates furnished. Discount to the trade. An elegant line of Tuttle & Bailey Registers at wholesale prices. Awarded a Silver Medal, the only premium given on Warm Air Furnaces at the Toronto Industrial Exhibition of 1885.

## J. F. PEASE FURNACE CO.,

SOLE MANUFACTURERS,

151, 153, 155 QUEEN STREET EAST, - TORONTO, ONT.  
and Syracuse, N. Y.

GANANOQUE.

BROPHY'S

INTERNATIONAL HOTEL

D. BROPHY, Proprietor.

STRICTLY FIRST CLASS.

All Modern Improvements.

KINGSTON.

ANGLO-AMERICAN HOTEL.

Most Convenient and Popular  
Hotel in City.

REFITTED AND REFURNISHED.

CHARGES MODERATE.

Directly opposite G.T.R. Station & Steam-  
boat Land. ng. Satisfaction Guaranteed.

H. SHANAHAN, Prop'r.



## MIDLAND DIVISION.—Continued.

### MAIN LINE.

Between Port Hope and Peterboro', Orillia and Midland

Mixed	Expr's	Mail.	Mls.	STATIONS.			P.M.	P.M.	A.M.
A.M.	P.M.	A.M.		Lv.	Ar.	P.M.	P.M.	A.M.	
10.45	3.45	7.00		Port Hope Junc.		1.20	10.05	9.20	
12.30	4.40	7.47	18	.... Millbrook....		2.30	9.20	8.00	
1.00	.....	.....	24½	.... Bethany		.....	.....	7.13	
1.10	.....	.....	26½	.... Brunswick		.....	.....	7.03	
1.20	.....	.....	28	.... Franklin		.....	.....	6.55	
.....	5.15	9.20	31	PETERBOROUGH		11.55	8.50	.....	
1.50	5.48	8.53	45	.... Omemece		11.20	8.15	6.35	
2.15	6.10	9.15	54	.... LINDSAY		1.00	7.55	6.00	
P.M.	6.25	9.30	61	.... Mariposa		10.41	7.36	A.M.	
.....	6.50	9.55	72	Ar. Blackwater	Lv.	10.15	7.10	.....	
.....	7.10	10.15		Lv.	Ar.	9.40	6.35	.....	
.....	7.20	10.25	74½	.... Sunderland		9.30	6.25	.....	
.....	7.35	10.40	80	.... Cannington		9.15	6.10	.....	
.....	7.50	10.55	86½	Ar. Lorneville	Lv.	9.00	5.55	.....	
.....	7.55	11.00	86½	Lv.	Ar.	8.55	5.50	.....	
.....	8.13	11.18	93½	.... Beaverton		8.38	5.33	.....	
.....	8.30	11.35	101½	.... Brechin		8.19	5.14	.....	
.....	8.50	11.55	108½	.... Uptergrove		8.00	4.55	.....	
.....	9.07	12.12	113½	.... ORILLIA		7.45	4.40	.....	
.....	9.59	1.04	128½	.... Coldwater		6.53	3.48	.....	
.....	10.15	1.20	133	WAUBAUSHENE		6.38	3.33	.....	
.....	10.50	1.55	146	.... MIDLAND		6.00	2.55	.....	
	P.M.	P.M.		Arr.	Lve.	A.M.	P.M.	.....	

Mixed Train leaves Peterborough 10.25 a.m., arrives at Blackwater 1.05 p.m. Returning leaves Blackwater 1.25 p.m., arriving Peterborough 4.00 p.m.

BRANCH LINE.  
Belleville Division.

Mixed	Mail	Mls.	STATIONS.	Mixed	Mail	Mls.	STATIONS.	Mixed	Mail	Mls.
P.M.	A.M.		Lve.	P.M.	A.M.		Ar.	P.M.	A.M.	
1.45	7.30	0	.... Peterboro'	7.50	10.20		....	7.50	10.20	
2.31	8.19	11½	.... Keene	7.00	9.25		....	7.00	9.25	
3.07	9.00	24	.... Hastings	6.20	9.00		....	6.20	9.00	
3.38	9.38	34	.... Campbellford	5.45	8.32		....	5.45	8.32	
4.02	10.08	42	.... Hoard's	5.17	8.10		....	5.17	8.10	
4.22	10.30	48	.... Stirling	4.58	7.55		....	4.58	7.55	
4.40	10.50	53	.... North Hastings Junction	4.40	7.40		....	4.40	7.40	
5.15	11.30	65½	.... Belleville	4.00	7.00		....	4.00	7.00	
			Arr.				Lve.			

### BRANCH LINES.

#### Lakefield Branch.

Mixed	Mail	Mail.	Mls.	STATIONS.			Mail	Mixed	Mixed
A.M.	A.M.	P.M.		Lve.	Ar.	A.M.	A.M.	P.M.	
.....	10.00	7.15	0	.... Lakefield		9.45	.....	6.55	
.....	10.45	7.55	11½	Ar. PETERBORO'	Lv.	8.55	.....	6.15	
7.05	11.55	8.50	19	Lv.	Ar.	8.20	8.50	.....	
7.25	12.14	9.05	19	.... Fraserville		.....	8.30	.....	
8.00	12.30	9.20	24½	.... Millbrook		7.47	8.15	.....	
9.20	1.20	10.05	42½	.... Port Hope Junc		7.00	.....	.....	
A.M.	P.M.	A.M.		Arr.	Lve.	A.M.	A.M.	.....	

#### Lindsay and Coboconk.

Mail.	Mls.	STATIONS.			Mail.
P.M.		Lvc.		Arr.	A.M.
6.20	0	.... Lindsay			9.55
6.45	6	.... Cambray			9.28
7.10	15½	Ar. Lorneville	Junc.	Dp	9.00
8.00	24½	Dp. Portage Road		Ar	8.40
8.40	24½	.... Kirkfield			7.55
8.50	26½	.... Victoria Road			7.45
9.10	29	.... Coboconk			7.25
9.55	37½	.... Coboconk			6.40
P.M.		Arr.		Lve.	A.M.

#### Madoc Branch.

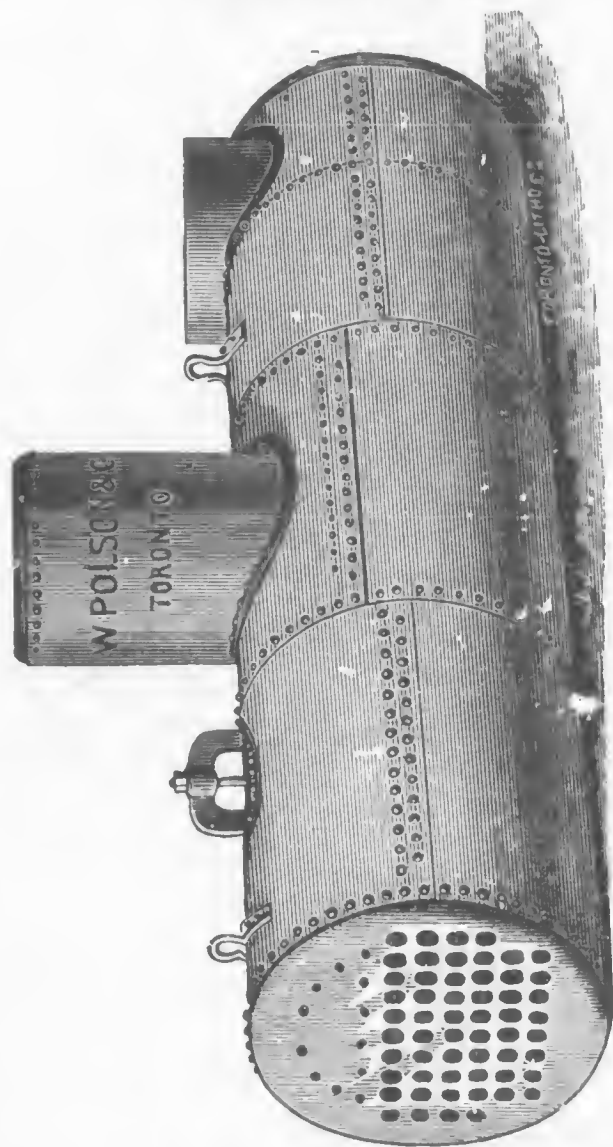
Mixed	Mixed	Mls.	STATIONS.			Mixed	Mixed
A.M.	P.M.		Lve.		Arr.	A.M.	P.M.
6.55	3.25	0	.... MADOC			11.55	5.45
7.53	4.17	13	.... W. Huntington			11.05	4.55
7.38	4.25	15	.... North Hastings Junc			10.55	4.45
8.20	.....	27½	Arr. BELLEVILLE	Lve.		10.10	.....

#### Sutton Branch.

Mail.	Mls.	STATIONS.			Mail.
A.M.		Lvc.		Arr.	P.M.
6.00	0	.... Sutton			7.55
6.45	12½	.... Mt. Albert			7.10
7.05	16½	.... Vlvian			6.50
7.20	19	.... Ballantrae			6.37
7.45	25	Arr. Stouffville	Lve.		6.10

# W.M. POLSON & CO., TORONTO.

MANUFACTURERS OF



ENGINES & BOILERS.

**Steam Yacht and Tug Machinery a Specialty.**

**Upright Engines and Boilers from 2 to 20 H.P.**

We carry a large stock of new and second-hand Engines, Boilers, and General Machinery.

**LOWEST PRICES AND SATISFACTION GUARANTEED.**

**OFFICE AND WORKS:**

**Esplanade East, Foot of Sherbourne St., Toronto, Ont.**



# SOUTHERN DIVISION.

## MAIN LINE, GOING WEST.

Dist. from Niagara F.	STATIONS.	Chicago Express (Sund'ys incl'ded)	Accom.	Accom.	St. Louis Express (Sund'ys incl'ded)	Pacific Express (Sund'ys incl'ded)	Mail.	Accom.	Mix.
	NEW YORK (West Shore) .. Dep.	9.30 am			6.00 pm	8.10 pm			
	BOSTON, FITCHBURG & } West Shore ..	8.30 "			3.00 "	7.00 "			
	NEW YORK, N. Y. C. .... "	10.30 "				9.15 "			
	NEW YORK, N. Y. L. E. & W. "	9.00 "			7.00 "	9.00 "			
	BOSTON, B. & A. .... "	8.30 "			3.00 "	7.00 "			
	ALBANY .....	3.00 pm			10.00 "	2.15 am		A.M.	P.M.
	ROCHESTER .....	10.05 "			4.30 am	10.00 "			5.05
	BUFFALO, N. Y. L. E. & W. "	9.50 pm			6.40 "	12.00 m.	2.00 "	8.20 "	6.05
	BUFFALO, N. Y. C. & W. S. "	11.50 "			6.20 "	12.10 pm	2.20 "		6.05
	S. S. BRIDGE (N. Y. C.) .... "	12.50 am		6.50 am	7.25 "	1.15 pm	3.35 "	9.20 am	7.50
	NIAGARA FALLS .....	1.15 "		7.05 "	7.45 "	1.35 "	3.50 "	9.30 "	8.00
9 1/2	Merrinton .....	1.31 "		7.27 "		1.52 "	4.10 "	9.55 "	8.25
11 1/2	St. Catharines .....	1.35 "		7.33 "	8.04 "	1.58 "	4.16 "		8.32
17 1/2	Jordan .....			7.45 "			4.27 "		
23	Beamsville .....			7.58 "			4.39 "		
27 1/2	Grimsbay .....			8.10 "			4.48 "		
32	Winona .....			8.21 "			4.59 "		
43 1/2	HAMILTON .....	{ Arr. 2.30 "		8.45 "	8.55 "	2.55 "	5.20 "		10.15
		{ Dep. 2.35 "		9.20 "	9.00 "	3.05 "	5.30 "	8.50 pm	
49 1/2	Dundas .....			9.35 "			5.45 "	4.05 "	
55	Copetown .....			9.48 "			5.58 "	4.17 "	
59 1/2	Lynden .....			9.58 "			6.08 "	4.27 "	
62 1/2	HARRISBURG .....	{ Arr. 3.15 "		10.05 "		3.45 "	6.15 "	4.35 "	
		{ Dep. 3.19 "		10.30 "	9 40 "	3.49 "	6.20 "		
64 1/2	St. George .....			10.35 "			6.25 "		
72 1/2	Paris .....	3.39 "		11.00 "	9 56 "	4.12 "	6 41 "		
79 1/2	Princeton .....			11.15 "			6 55 "		
81 1/2	Cobles .....			11 20 "			7.00 "		
86 1/2	Eastwood .....			11.31 "			7.10 "		
91	Woodstock .....	4.18 "		11.44 "	10.31 "	4.45 "	7.22 "		
95 1/2	Beachville .....			11.53 "			7.35 "		
100 1/2	Ingersoll .....	4.34 "		12.05 pm	10.47 "	5.03 "	7.47 "	Windsor	
109 1/2	Dorchester .....			12.23 "			8.10 "	Accom	
118 1/2	London East .....		Acc.	12.40 "			8.30 "		
119 1/2	LONDON .....	{ Arr. 5 10 "		A.M. 12.45 "	11.20 "	5.45 "	8.35 pm	Mixed.	
		{ Dep. 5.30 "		6.45 2.15 "	11 25 "	6.20 "		6 30 pm	
129 1/2	Komoka .....			7.20 2.35 "				6.59 "	
134 1/2	Mount Brydges .....			7.40 2.44 "				7.10 "	
140 1/2	Longwood .....			8.02 2.58 "				7.23 "	
145 1/2	Appin .....			8.21 3.09 "				7.42 "	
149 1/2	Glencoe .....	6 20 "		9.00 3.17 "				7.55 "	
150 1/2	Newbury .....	6 32 "		9.30 3.30 "				8.12 "	
161 1/2	Bothwell .....	6.41 "		10.25 3.43 "			Wind- er	8.27 "	
169 1/2	Thamesville .....	6.54 "		11.05 4.01 "			Accom.	8.50 "	
174 1/2	Lewisville .....			11.25 4.15 "				9.08 "	
183 1/2	CHATHAM .....	{ Arr. 7.20 "		12.00 4.40 "	1.00 pm	8.05 "		9.35 pm	
		{ Dep. 7.35 "		1.20 4.45 "	1.10 "	8.10 "	6.50 am		
197 1/2	Jeannette's Creek .....			.06 5.14 "			7.20 "		
203 1/2	Stony Point .....			2.26 5.25 "			7.34 "		
212 1/2	Belle River .....			2.54 5.44 "			7.52 "		
221 1/2	Tecumseh .....			3.27 6.00 "			8.13 "		
229 1/2	WINDSOR .....	Arr. 8.45 "		4.00 6.15 "	2.10 "	9.20 "	8.30 "		
	DETROIT (D. G. H. & M. Depot) "	8.20 "	P.M.	5.50 "	1.45 "	8.55 "			
	CHICAGO, Wab. & B. & O. R. "				9.45 "	7.30 am			
	CHICAGO, via. C. & G. T. .... "	6.30 pm				8.10 "			
	MILWAUKEE, D., G., H. & M. "				6.00 am				
	ST. LOUIS .....	Arr.			6.57 am	7 30 pm			



# THE BARBER & ELLIS COMPANY,

Nos. 15 Jordan and 16, 17 & 14 Melinda Streets,

TORONTO, ONT.

## BOOK-BINDERS.

All grades of Account Books in stock and made to order, of the best material and by first-class workmen.

## BOX-MAKERS.

All kinds of Paper Boxes made for manufacturers of Hosiery, &c, &c

## ENVELOPE MANUFACTURERS.

We are the only large makers in the Dominion.

## PAPER DEALERS.

All grades of Paper in stock. Printers' supplies in great variety. Bookbinders' stock of all descriptions.

CORRESPONDENCE SOLICITED.

BARBER & ELLIS COMPANY, Toronto, Ontario.

## The Modern Turkish, or Roman Bath,

140 St. Monique Street, foot of McGill College Avenue,

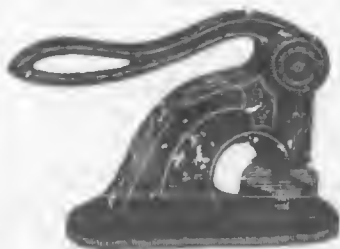
MONTREAL.

The largest, most complete, luxurious, and best constructed Baths on this continent.

Public Bathing Hours : Gentlemen, 6 to 8 A.M. ; 2 to 9 P.M. Ladies, 10 to 12, noon.

Accommodation provided for Resident Patients. Special attention devoted to the Treatment of Chronic Diseases.

D. B. A. MACBEAN, Proprietor.



## Keystone STAMP Works.

FOR

Rubber and Metal Stamps, Seals, Burning Brands, Stencils, etc.,

Call at the Keystone Stamp Works, 4 King Street East, TORONTO.

Send Postal for Illustrated Catalogue—Free to any address.

## SOUTHERN DIVISION.

### MAIN LINE, GOING EAST.

Dist. from Windsor.	STATIONS.	Limited Express (Sund'ys Incl'd)	Mall.	Atlantic Express (Sund'ys Incl'd)	Mixed.	Mixed.	Day Express	St. Louis Express Sundays Incl'd.	Mix.
	ST. LOUIS	7.43 am						6.40 pm	
	CHICAGO (via C. & G. T.) Dep.	3.25 pm		8 15 pm				10.05 "	
	CHICAGO B. & O. & Wab. "	3.45 pm		8.45 "					
	MILWAUKEE "	11.45 am		6.25 am		5.50 pm		12.05 "	
	DETROIT D. G.H. & M. D. (ot) "	12.00 nt.		8.60 "	11.20 am	7.30 "	7.00 am	1.40 "	
	<b>WINDSOR</b>	1.40 am			11.48 "	7.50 "	7.14 "		
7 1/2	Tecumseh				12.20 pm	8.15 "	7.30 "		
17 1/2	Belle River				12.53 "	8.40 "	7.47 "		
26	Stony Point				1.10 "	8.55 "	8.00 "		
32	Jeanette's Creek			9.05 "	2.05 "	9.30 "	8.25 "	2.40 "	
38	CHATHAM	Arr. 2.45 "		9.10 "	3.00 "	9.40 "	8.30 "	2.50 "	
45 1/2	Vosburg	Dep. 2.50 "			3.24 "		8.50 "		
54 1/2	Lewisville				3.39 "		9.03 "		
60 1/2	Thamesville				4.00 "	10.45 "	9.20 "		
68 1/2	Bothwell				4.13 "		9.30 "		
73	Newbury				4.28 "	11.17 "	9.45 "		
79 1/2	Glencoe				4.38 "		9.53 "		
84 1/2	Appin				4.52 "		10.05 "		
89 1/2	Longwood				5.07 "		10.18 "		
95 1/2	Mount Brydges				5.20 "		10.28 "		
100	Komoka				5.45 "	12.45 "	10.50 "	4.25 "	P.M.
110	LONDON	Arr. 4.30 am	A.M. 11 05 "			E.M.	2.20 pm	4.30 "	7.00
		Dep. 4.45 "	6.00 11.30 "				2.25 "		
111 1/2	London East		6.06				2.42 "		7.30
119 1/2	Dorchester		6.21				3.05 "	5.03 "	8.12
129 1/2	Ingersoll		6.40	12.05 pm			3.15 "		8.27
133 1/2	Beachville		6.49				3.29 "	5.20 "	8.43
138 1/2	Woodstock		7.03	12.22 "			3.38 "		
143	Eastwood		7.12				3.50 "		
148	Gobies		7.22				3.55 "		
150 1/2	Princeton		7.29				4.12 "	5.49 "	
157 1/2	Paris		7.42	12 53 "		Kincardine	4.30 "		
165 1/2	St. George		7.59			Accom.	4.35 "	6.03 "	
167	HARRISBURG	Arr. 8.04	1.10 "				4.40 "		
		Dep. 8.09	1.13 "		6.30 pm	11.29 am	4.48 "		
170 1/2	Lynden		8.17		7.00 "	11.46 "	4.58 "		
174 1/2	Copetown		8.23		7.20 "	11.58 "	5.09 "		
179 1/2	Dundas		8.41		7.45 "	12.12 pm	5.25 "	6.30 "	P.M.
185 1/2	HAMILTON	Arr. 6.55 "	8.55 1.50 "				5.35 "	6.40 "	8.00
		Dep. 7.00 "	9.15 1.55 "				5.57 "		
197 1/2	Winona		9.42				6.08 "		
202 1/2	Grimsby		9.55				6.17 "		
206 1/2	Beamsville		10.05				6.28 "		
212 1/2	Jordan		10.18				6.41 "		9.40
218	St. Catharines		7.56 "	10.33	2.51 "		6.48 "		
220	Merrittton			10.58			7.05 "	7.55 "	
229 1/2	NIAGARA FALLS	Arr. 8.20 "	11.00	3.15 "			7.15 "	8.05 "	
	SUSPENSION BDG. (N.Y.C.)	8.40 "	11.10	3.25 "			9.00 "	9.00 "	
	BUFFALO (N.Y.C.)		12.20				9.00 "	9.00 "	
	BUFFALO, (N. Y. L.E. & W)		9.00 "	12.22	5.00 "		9.00 "	9.00 "	
	BUFFALO, N.Y.C. & W.S.		9.45 "	12.20	4.40 "		11.15 "	11.15 "	
	ROCHESTER		11.45 "	2.30	6.50 "		3.40 am	6.40 am	
	ALBANY		7.35 pm	P.M.	2.30 am		2.56 pm	2.50 pm	
	BOSTON (B. and A.)				9.35 "		11.00 am	11.00 am	
	NEW YORK (N.Y.C.)				7.30 "		9.55 "	9.55 "	
	NEW YORK, N.Y.L.E. and W.		8.55 "		7.10 "		10.30 "	10.30 "	
	NEW YORK (W. Sh)		10.25 "		7.10 "				
	BOSTON, Fitchburg and West Shore.				9.35 "		3.00 pm	3.00 pm	

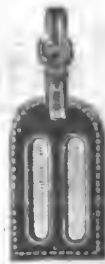
## LUBRICATING OILS.

(AMERICAN.)

We offer to the Trade a line of Oils unequalled by any in the market (and at a lower price). Call or send for Samples and prices.

**DENSOLINE EMPORIUM,**

29 Adelaide St. West, TORONTO, ONT.



**H. E. CLARKE & CO**  
**TORONTO.**

**MANUFACTURERS, IMPORTERS AND RETAILERS**

OF

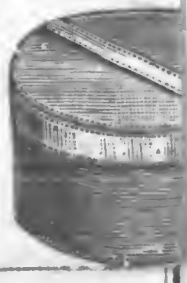
Trunks, Telescope Cases, Hat and Bonnet Boxes, Collar and Cuff  
 Pacific, R.R., and Gladstone Bags, Fitted or Dressing Bags, C  
 Bags with and without Toilet Fitting, Ladies' Hand 'Bags.'

Surgical, Cash, and Courier Bags, Basket  
 Trunks and Picnic Baskets, School  
 and Skate Bags and every des-  
 cription of Sample Cases.



Leather Coat Case.

Parties in Search of anything in these  
 lines will never regret a Visit to the  
 Retail Travellers' Goods Emporium of  
 Messrs. CLARKE & CO., which is  
 by all acknowledged to be the Finest  
 Retail, Trunk Store in America.;



**RETAIL STORE.**

**105 KING STREET WEST**

shortest notice.

# STRANGERS

Will find a very large selection

**WATCHES, DIAMONDS, JEWELRY,**

At closer figures than any other

## CRUMPTON

**NOTED WATCH & JEWELRY HOUSE, 83**

AT ORDERS BY MAIL



## REVUE

Cor. K

FIRST CLASS ACCOMMODATIONS

Rates, \$1.00 to

NOTE.—This Hotel under the name of the Revue Hotel, and is now one of the most modern and comfortable in the city. It is situated in a convenient location and is well adapted to the needs of the traveler. It is a most desirable place for a stay.

GIVE



RS TORONTO

Large selection of extra quality

JEWELRY, SILVERWARE AND CLOCKS

than any other firm in the City, at

MUMPTON'S

HOUSE, 83 & 85 KING ST. EAST, TORONTO.

BY MAIL A SPECIALTY.



EVERE HOUSE.

Cor. King and York Sts., Toronto.

CLASS ACCOMMODATION FOR TRAVELLERS. PORTERS MEET ALL TRAINS.

\$1.00 to \$1.50 per day. Special Rates to the Theatrical Profession.

J. JAMESON, Proprietor.

This Hotel under the new management has been refitted and refurnished throughout now one of the most popular hotels for the rates in America. Travellers will find it their advantage to stop at the Revere while remaining in the city. Situated on principal places of business and amusement.

GIVE THE REVERE A TRIAL.

EAST.

WEST.

For TICKETS, RATES and Reliable Information

APPLY TO

**P. J. SLATTER,**

CITY PASSENGER AGENT

Grand Trunk Railway, Toronto.

Cor. King and Yonge Sts., or 20 York St.

NORTH.

SOUTH



COX & CO.,  
**Stock Brokers**

--MEMBERS TORONTO STOCK EXCHANGE--

**Have the only Independent Direct Wire giving continuous  
New York Stock Quotations, and which are received  
QUICKER THAN BY ANY OTHER LINE.**

Buy and sell on commission for cash or on margin.

All securities dealt in on the Toronto, Montreal, and New York Stock  
Exchanges. Also execute orders on the **CHICAGO BOARD OF TRADE**  
in Grain and Provisions.

Daily Cable Quotations of Hudson Bay and other Stocks.

**26 TORONTO STREET.**

---

**THE PUREST ONLY.**

---

ROBERT R. MARTIN & CO.,

Manufacturing Chemists, Pharmacists and Perfumers,

COR. QUEEN AND YONGE STREETS, TORONTO.

---

**HAMILTON BUSINESS COLLEGE,**

(LATE HAMILTON COMMERCIAL),

COR. KING & JAMES STREETS,  
HAMILTON.

Book-keeping, Arithmetic, Commercial Law, Commercial Papers, Shorthand, Busi-  
ness Penmanship, Mechanical Drawing and Modelling. Send for Circular.

**BATTRAY & GEIGER.**



**H. E. CLARKE & CO.,**  
TORONTO.

MANUFACTURERS, IMPORTERS AND RETAILERS

OR

Trunks, Telescope Cases, Hat and Bonnet Boxes, Collar and Cuff Boxes,  
Pacific, R.R., and Gladstone Bags, Fitted or Dressing Bags, Club  
Bags with and without Toilet Fitting, Ladies' Hand Bags.

Surgical, Cash, and Courier Bags, Basket  
Trunks and Picnic Baskets, School  
and Skate Bags and every de-  
scription of Sample Cases.



Leather Coat Case.

Tourists can there find anything desired in  
the Trunk Line, or have a special  
design made to order on the  
shortest notice.

Parties in Search of anything in these  
lines will never regret a Visit to the  
Retail Travellers' Goods Emporium of  
Messrs. CLARKE & CO., which is  
by all acknowledged to be the Finest  
Retail, Trunk Store in America.;



RETAIL STORE.  
105 KING STREET WEST.

FACTORY, -506 to 608 KING STREET WEST.

**CATARRH**  
**CATARRHAL DEAFNESS**  
A NEW **HAY FEVER**  
TREATMENT

Sufferers are not generally aware that  
these diseases are contagious, or that they  
are due to the presence of living parasites  
in the lining membrane of the nose and  
Eustachian tubes. Microscopic research  
has proved this to be a fact, and the result  
is that a simple remedy has been formu-  
lated whereby these diseases are cured  
in from one to three simple applications  
made at home. A descriptive pamphlet is  
sent free on receipt of stamp by A. H.  
Dixon & Son, 305 King-street West,  
Toronto, Canada.

NTO, ONT.



D.,

RS

Boxes,  
ub

Curists can there find anything desired in  
the Trunk Line, or have a special



# CATARRH

# CATARRHAL DEAFNESS

# A NEW HAY FEVER TREATMENT

Sufferers are not generally aware that these diseases are contagious, or that they are due to the presence of living parasites in the lining membrane of the nose and Eustachian tubes. Microscopic research has proved this to be a fact, and the result is that a simple remedy has been formulated whereby these diseases are cured in from one to three simple applications made at home. A descriptive pamphlet is sent free on receipt of stamp by A. H. Dixon & Son, 305 King-street West, Toronto, Canada.

Ac  
P.  
5.  
5.  
0.  
0.  
0.  
0.  
0.  
0.  
0.  
7.  
P.

Sarnia Division.

**WELLAND BRANCH.**

Going North.						STATIONS.	Going South.			
Acc.	Mail.	Mixed	Exp.	Exp.	Miles.		Acc.	Mail.		Exp.
P.M.	P.M.	A.M.	.....	A.M.	0	Dep. Port Colborne... Arr.	A.M.	A.M.		P.M.
5.54	2.45	9.05	.....	6.15	1 1/2	..... Humberstone.....	8.35	11.40	.....	7.45
6.02	2.50	9.11	.....	6.20	3	..... Welland Junction.....	8.31	11.36	.....	7.41
6.10	3.02	9.23	.....	6.29	4 1/2	..... Welland.....	8.9	11.27	.....	7.32
6.21	3.16	9.36	.....	6.41	6	..... Port Robinson.....	8.10	11.17	.....	7.22
6.25	3.32	9.52	.....	6.53	11 1/2	..... Allanburg Junction.....	7.57	11.08	.....	7.12
6.28	3.36	9.57	.....	6.59	13	..... Allanburg.....	7.51	11.04	.....	7.09
6.40	3.40	10.01	.....	7.03	14	..... Thorold.....	7.47	11.00	.....	7.05
6.40	3.58	10.16	A.M.	7.18	17 1/2	..... Merrittton.....	7.35	10.46	.....	6.55
6.46	4.10	10.34	9.55	7.27	19 1/2	..... St. Catharines.....	7.27	10.38	.....	6.46
6.55	4.23	10.50	10.05	7.40	22 1/2	Arr. Port Dalhousie... Dep.	7.15	10.25	.....	6.3
7.05	4.35	11.00	10.15	7.55	25		7.05	10.15	.....	6.20
P.M.	P.M.	A.M.	A				A.M.	A.M.		P.M.

**Sarnia Division.**

GOING EAST.					GOING WEST.				
Exp.	*Mixed	Express	Limited Express	Miles.	STATIONS.	Exp.	Acc.	Mail.	Pac. Ex. (Daily.)
9.20	5.20 pm.	2.15 pm	4.40 am	0	Arr. LONDON... Dep	5.20	7.35	2.30	6.05 pm
9.10	5.02 "	"	"	4 1/2	Hyde Park	5.20	7.44	2.30	"
8.58	4.45 "	1.53 "	8.55	10	Komoka	5.20	7.57	2.50	6.24 "
8.35	4.10 "	1.31 "	8.20	20 1/2	Strathroy	5.20	8.20	3.10	6.43 "
8.21	2.35 "	1.17 "	7.50	26 1/2	Kerwood	5.20	8.31	3.23	11.55
8.05	2.05 "	1.00 "	7.23	35 1/2	Watford	5.20	8.47	3.40	1.00
7.45	1.25 "	12.42 "	6.54	41 1/2	Waukegan	5.20	9.05	3.57	1.25
7.35	1.00 "	12.35 "	6.38	45 1/2	Wyoming	6.38	9.12	4.05	2.20
8.10	.....	1.10 pm	.....	51	A. PETROLIA } D.	6.05	8.35	3.30	1.50 "
6.60	11.50 am	11.50 am	.....	51 1/2	D. } A.	7.20	9.50	4.45	8.10 "
7.16	.....	12.20 pm	6.12	61 1/2	Mandaumin	.....	9.25	4.20	2.45
6.55	.....	12.00 "	5.40	61	SARNIA... Arr.	7.05	9 "	4.40	8.10 "
6.40	.....	11.40 "	5.25	64	D. PORT HURON A.	.....	10.00	4.55	8.25 "
	.....	11.50 am	3.05 am	64	Dep. Point Edward Arr.	7.5	10.00	4.50	8.20 "

Chicago, Pacific and Atlantic Expresses run on Sundays, but will not stop at intermediate stations.

**London and Port Stanley Division.**

Going South.				Going North.			
Accom.	Mail.	Accom.	Mail.	Accom.	Mail.	Accom.	Mail.
7.50 pm	4.00 pm	10.35 am	.....	6.25 am	1.00 pm	4.35 pm	.....
7.40 "	3.50 "	10.25 "	.....	6.35 "	1.10 "	4.45 "	.....
7.30 "	3.40 "	10.15 "	.....	6.45 "	1.20 "	4.55 "	P.M.
7.25 "	3.30 "	10.10 "	.....	6.50 "	1.35 "	5.00 "	10.00
7.20 "	3.25 "	10.02 "	.....	7.01 "	1.40 "	5.05 "	.....
7.12 "	3.17 "	9.52 "	.....	7.01 "	1.48 "	5.13 "	.....
7.03 "	3.03 "	9.43 "	.....	7.09 "	1.56 "	5.22 "	.....
6.45 "	2.55 "	9.30 "	.....	7.20 "	2.10 "	5.35 "	10.30

## SOUTHERN DIVISION.

### HAMILTON TO TORONTO.

Hamilton to Toronto.							Mls. from Toronto.	STATIONS.						Toronto to Hamilton.				
Exp.	Exp.	Exp.	Mail.	Exp. D'ly.	Mix.	Exp.		Exp.	Exp.	Mail.	Acc. D'ly.	Exp.	Exp.	Acc.				
p. m.	a. m.	a. m.	p. m.	p. m.	p. m.	p. m.		Arr.	<b>TORONTO</b>	Dep.	p. m.	a. m.	a. m.	a. p. m.	p. m.	p. m.		
4.30	8.35	10.15	1.55	7.05	7.45	11.10			.....		11.00	9.15	7.10	12.20	3.55	5.55		
			3.57	6.45			7	.....	South Parkdale				7.19			6.05		
	8.15		1.37	6.45			13 1/2	.....	Mimico		11.20		7.32			6.15		
	8.01		1.23	6.30			16 1/2	.....	Port Credit				7.44	12.47	4.21	6.30		
	7.55		1.16	6.24			21 1/2	.....	Clarkson's				7.55			6.37		
	7.45	9.38	1.03	6.10		9.52	25 1/2	.....	Oakville			9.56	8.08	1.03	4.37	6.47		
	7.34		12.51	6.04		9.38	30 1/2	.....	Bronte				8.17	1.13		6.58		
3.24	7.17	9.18	12.37	5.50	6.47	9.20	32	.....	Burlington			10.18	8.30	1.23	4.57	7.13		
	7.09		12.29	5.44		9.11	35	.....	Waterdown				8.37	1.36		7.20		
3.10	7.00	9.05	12.20	5.35	6.35	9.00	39	.....	Dep. <b>HAMILTON</b>	Arr.	12.30	10.35	8.45	1.45	5.10	7.30		
p. m.	a. m.	a. m.	p. m.	p. m.	p. m.	p. m.					a. m.	a. m.	a. m.	p. m.	p. m.	p. m.		

Suburban Trains leave Toronto 6.35, 10.55 a.m., and 2.00, 4.35 and 6.55 p.m. Returning, leave Mimico 8.35 a.m., 11.35 a.m., 2.35, 5.55, and 7.40 p.m., calling at Queens Wharf, Parkdale, High Park and the Humber, both going and returning.  
*a* Run on Sundays, but will not stop at intermediate stations.

### Georgian Bay and Lake Erie District.

Going East.		STATIONS.		Going West.	
Mixed.	Exp.			Exp.	Mixed.
P. M.	p. m.			a. m.	p. m.
1.45	7.15	Arr.	<b>Port Dover</b>	7.45	2.15
1.15	6.50		..... Simcoe	8.10	3.00
12.35	6.25		<b>PORT DOVER JUNCTION</b>	8.36	3.50
12.12	6.10		..... Oterville	8.48	4.15
12.0	6.03		..... Brantford Junction	8.55	4.30
11.55	5.57		..... Norwich	9.00	4.37
11.30	5.45		..... Burgessville	9.15	4.47
10.50	5.20	Dep. }	..... <b>WOODSTOCK</b>	9.40	5.15
10.20	4.40	Arr. }	.....	10.31	5.35
10.10	4.35		..... C. V. R. Junction	10.41	5.45
9.25	4.02		..... Tavistock	11.16	6.40
9.20	3.59		..... Tavistock Junction	11.21	6.45
8.55	3.40	Dep.	..... <b>Stratford</b>	11.40	7.10
a. m.	p. m.			a. m.	p. m.

## HOOF OINTMENT.

A perfect remedy and speedy cure for Hard and Cracked Hoofs in horses, Scratches or Cracked Feet, and for Cuts, Bites, Bruises, Sprains, Sore Shoulders, Galls, Swellings, etc. Nothing heretofore discovered, has such a marvelously healthy and stimulating action. A few applications will start the most hardened or contracted hoofs to growing. It is wonderfully softening in its nature and heals more rapidly (without scars) than any other remedy. It contains no poison of any kind and is unchangeable in any climate. In half pound and pound cans, 25 and 50 cents.

### DENSOLINE EMPORIUM,

29 Adelaide St. West, TORONTO, ONT

## SOUTHERN DIVISION.

### Loop Line.

Mls. from Fort Erie.	GOING WEST.	From Buffalo.			GOING EAST.	To Buffalo.		
		*Mixed.	Accom.	Express		Mixed.	Accom.	Express
	<b>BUFFALO</b> Erie St. Dep.	From 9.05 am	4.30 pm	7.55 am	<b>GLENCOE</b> .. Depart	5.30 " " "		8.55 am
	"    Black Rock	Fls at 7:35 am	.45 " "	8.10 " "	Ekfrid .....	5.30 " " "		9.14 " "
16 1/2	Welland Junction ...	9.38 " "			Middlemiss. ....	5.47 " " "		9.28 " "
24 1/2	Marshville .....	9.55 " "			Lawrence .....	6.02 " " "		9.38 " "
31	Moulton .....	10.01 " "			Bairds .....	6.14 " " "		9.45 " "
33 1/2	Diltz .....	10.20 " "			Paynes .....	6.20 " " "		9.58 " "
40	Darling Road .....	10.25 " "				6.40 " " "		10.10 " "
41 1/2	Canfield Junc... { Ar	11.00 " "	6.45 pm	10.30 am	<b>ST. THOMAS</b> .. { Arr			
	{ De	11.00 " "			{ De	10.25 am	3.35 pm	7.20 am
4 8	CAYUGA .....	11.10 " "	7.02 " "	10.45 " "	New Sarum .....	10.45 " " "	3.48 " " "	7.35 " "
5 3	Nelles' Corners.....	12.05 pm	7.15 " "	10.58 " "	Aylmer .....	11.25 " " "	3.57 " " "	7.47 " "
61	Jarvis .....	12.45 " "	7.34 " "	11.17 " "	Corinth .....	12.00 " " "	4.15 " " "	8.08 " "
67	Renton .....	1.05 " "	7.48 " "	11.31 " "	Tilsonburg Junction.	12.43 pm		8.20 " "
72	SIMCOE .....	1.35 " "	8.00 " "	11.42 " "	Tilsonburg .....	12.50 " " "	4.31 " " "	8.25 " "
76	Nixon .....	1.55 " "	8.11 " "	11.53 " "	Courtland .....	1.02 " " "	4.40 " " "	8.33 " "
82	Delhi .....	2.25 " "	8.23 " "	12.04 pm	Delhi .....	1.35 " " "	4.56 " " "	8.50 " "
89	Courtland .....	2.55 " "	8.40 " "	12.22 " "	Nixon .....	1.50 " " "	5.06 " " "	9.00 " "
93	Tilsonburg .....	3.15 " "	8.50 " "	12.30 " "	SIMCOE .....	2.10 " " "	5.17 " " "	9.10 " "
95	Tilsonburg Junction.	3.35 " "	8.58 " "	12.35 " "	Renton .....	2.25 " " "	5.27 " " "	9.20 " "
99	Cortuth .....	4.15 " "	9.13 " "	12.45 " "	Jarvis .....	2.45 " " "	5.40 " " "	9.32 " "
107	Aylmer .....	5.30 " "	9.31 " "	1.02 " "	Nelles' Corners.....	3.10 " " "	6.00 " " "	9.49 " "
112	New Sarum .....	6.00 " "	9.55 " "	1.25 " "	CAYUGA .....	3.45 " " "	6.10 " " "	10.00 " "
118	<b>ST. THOMAS</b> .. { Arr				Canfield Junc... { Ar	4.10 " " "	6.25 " " "	10.15 " "
	{ De.	3.40 pm	7.25 am	P.M.	{ De	4.15 " " "		
122 1/2	Paynes .....	3.48 " "	7.32 " "		Darling Road .....	4.15 " " "		
126 1/2	Bairds .....	3.59 " "	7.41 " "		Diltz .....	4.33 " " "		
130 1/2	Lawrence .....	4.10 " "	7.51 " "		Moulton .....	4.40 " " "		
134 1/2	Middlemiss .....	4.21 " "	8.01 " "		Marshville .....	5.00 " " "		
140 1/2	Ekfrid .....	4.35 " "	8.15 " "		Welland Junction ...	5.25 " " "		
145 1/2	<b>GLENCOE</b> .....	4.50 " "	8.30 " "		<b>BUFFALO</b> { Black			
					{ Rock			
					{ Erie St Ar			
					To N. Falls at 6.30 p.m.	8.30 pm	12.55 pm	
						8.45 " "	1.10 " "	

### Brantford, Norfolk, & Port Burwell Branch.

To Tilsonburg.—West.						STATIONS.	Miles from Tilsonburg	To Harrisburg.—East.				
Acc.	Acc.	Acc.	Acc.	Acc.	Acc.			Acc.	Acc.	Acc.	Acc.	Acc.
	P.M.		A.M.		P.M.		P.M.	A.M.	P.M.	P.M.		
....	8.50	....	8.15	....	12.32	Ar.....	Tilsonburg Junc. .. Dep.	12.50	8.23	9.05	3.45	
....	8.45	....	8.05	....	12.27	Ar.....	TILSONBURG..... Dep.	2	1.00	8.30	9.15	
....	8.28	....	A.M.	....	12.11	....	Springford .....	7 1/2	....	8.43	P.M.	
....	8.16	....		....	12.00	....	G. B. & L. E. Crossing .....	12 1/2	....	8.55	....	
....	8.11	....		....	11.55	....	Norwich .....	14 1/2	....	9.02	....	
....	7.58	....		....	11.43	....	Hatchley .....	18 1/2	....	*9.10	....	
....	7.51	....		....	11.36	....	Harley .....	21 1/2	....	9.17	....	
....	7.43	....		....	11.28	....	Burford .....	25 1/2	....	9.25	....	
....	7.35	....		....	*11.20	....	Mt. Vernon.....	28	....	9.32	....	
....	7.27	....		....	*11.13	....	Mt. Pleasant .....	30 1/2	A.M.	9.41	....	
....	7.15	P.M.		....	11.03	Dep. }	Brantford .....	34 1/2	9.00	9.55	P.M.	
....	7.00	5.10	8.45	12.25	10.0	Arr. }	.....	34 1/2	9.00	10.50	3.05	
....	6.30	4.45	8.15	11.55	10.20	Dep.....	<b>Harrisburg</b> .....	42 1/2	9.30	11.15	3.35	
	P.M.	P.M.	A.M.	A.M.	A.M.				A.M.	A.M.	P.M.	
											5.26	
											7.15	
											5.37	
											7.30	
											8.00	

## M. McCONNELL,

IMPORTER & DEALER IN WINES & SPIRITS, IMPORTED & DOMESTIC CIGARS,  
has now on hand the Largest Stock of Imported and Domestic  
Cigars in Canada.

48 KING STREET EAST, TORONTO.



## CHICAGO AND GRAND TRUNK RAILWAY.

GOING EAST.					STATIONS.	GOING WEST.			
Express	Express	Express	Mls.			Express	Express	Express	Express
10.30 pm	7.55 am	1.36 am	10.50 am	0	Arr...Fort Gratiot...Lve	7.55 am	4.00 pm	6.15 am	7.55 pm
10.10 "	7.35 "	1.16 "	10.30 "	3.6	.....G. T. Junction. ....	8.05 "	4.20 "	6.35 "	8.15 "
9.42 "	"	"	9.58 "	17.8	.....Emmet.....	"	4.47 "	7.12 "	"
9.25 "	"	"	9.41 "	26.3	.....Capac.....	"	5.03 "	7.30 "	"
9.10 "	*6.48 "	"	9.25 "	33.7	.....Imlay City.....	"	5.18 "	7.46 "	9.10 "
8.53 "	"	"	9.15 "	37.9	.....Attica.....	"	5.26 "	7.55 "	"
8.42 "	6.28 "	12.07 am	8.57 "	46.0	.....Lapeer.....	9.28 "	5.40 "	8.12 "	9.34 "
8.17 "	"	"	8.35 "	57.0	.....Davison.....	"	6.02 "	8.35 "	"
7.55 "	5.55 "	11.37 "	8.17 "	66.0	.....Flint.....	10.05 "	6.20 "	8.53 "	10.10 "
7.28 "	"	"	7.57 "	74.2	.....Swartz Creek.....	"	6.38 "	9.12 "	"
7.05 "	5.16 "	11.08 "	7.40 "	82.3	.....Durand.....	10.39 "	7.60 "	9.30 "	10.48 "
6.35 "	"	"	7.10 "	87.1	.....Bancroft.....	"	7.30 "	9.41 "	11.00 "
6.23 "	"	"	6.58 "	96.4	.....Morrice.....	"	7.42 "	9.55 "	"
6.09 "	"	"	6.42 "	99.9	.....Shaftsbury.....	"	7.55 "	10.10 "	"
5.45 "	*4.17 "	*10.21 "	6.16 "	112.1	.....Trowbridge.....	11.30 "	8.21 "	10.39 "	11.43 "
5.38 "	4.10 "	10.14 "	6.09 "	114.7	.....Lansing.....	11.37 "	8.28 "	10.47 "	11.50 "
5.13 "	"	"	5.44 "	126.9	.....Pottersville.....	"	8.53 "	11.15 "	"
5.02 "	3.35 "	9.43 "	5.32 "	133.9	.....Charlotte.....	12 11 pm	9.07 "	11.31 "	12.25 am
4.45 "	"	"	5.15 "	141.3	.....Olivet.....	"	9.30 "	11.48 "	"
4.35 "	"	"	5.04 "	146.4	.....Bellevue.....	"	9.41 "	12.25 pm	"
4.13 "	2.50 "	9.05 "	4.40 "	158.6	.....Nichols.....	12.55 "	10.05 "	"	1.15 "
4.08 pm	2.45 "	9 00 "	4.35 am	159.7	.....Battle Creek.....	1.20 "	10.10 "	12.30 "	1.25 "
3.41 "	"	"	"	170.2	.....Climax.....	1.44 "	"	"	"
3.15 "	1.48 "	8.15 "	"	183.1	.....Vicksburg.....	2.11 "	"	"	2.21 "
3.04 "	1.37 "	"	"	188.7	.....Schoolcraft.....	2.23 "	"	"	2.32 "
2.45 "	1.17 "	"	"	199.4	.....Marcellus.....	2.45 "	"	"	"
2.15 "	12.52 "	7.15 "	"	212.7	.....Cassopolis.....	3.13 "	"	"	3.19 "
1.56 "	12.35 "	"	"	221.4	.....Edwardsburg.....	"	"	"	3.38 "
1.33 "	12.17 "	"	"	231.4	.....Mishawaka.....	3.52 "	"	"	4.00 "
1 26 "	12.10 am	6.52 "	"	234.9	.....South Bend.....	4.00 "	"	"	4.07 "
12.40 "	"	"	"	255.3	.....Stillwell.....	"	"	"	"
12.29 pm	"	"	"	260.4	.....Kingsbury.....	"	"	"	"
"	"	"	"	265.3	.....Union Mills.....	"	"	"	"
11.50 "	10.41 "	5.32 "	"	279.6	.....Valparaiso...Arr	5.32 "	"	"	5 5
9.10 am	8.30 pm	3.25 pm	"	330.0	Lve.....Chicago.....Arr	7.55 pm	"	"	8.10 am

# TAYLOR BROS..

MANUFACTURERS OF

## Paper and Paper Bags.

MOTH-PROOF CARPET LINING,  
**ROOFING FELT AND SHEATHING PAPER,**  
**Butchers' Slicers.**

**30 WEST MARKET SQUARE,**  
**TORONTO.**

**MILLS: DON RIVER.**

# DETROIT, GRAND HAVEN & MILWAUKEE RAILWAY

Going West.					Going East.						
1	3	5	7	11	13	STATIONS.					
Mail, Parlor Ex. Sun.	Mail, Parlor Ex. Sun.	Stimboat Ex. Sun.	Night Exp. Sleeper Day.	Mixed Ex. Sunday.	Mixed Ex. Sunday.	In effect May 16, 1886.					
Mls.						4	6	8	10	14	
						Stimboat Ex. Sun.	Mail, Parlor Ex. Sun.	Evening Ex. Sun.	Limit Daily.	Mixed Ex. Sunday.	
p. m.	p. m.	p. m.	a. m.	...	a. m.	a. m.	a. m.	p. m.	p. m.	...	
2.15	6.40	11.45	6.45	...	10.40	Arr. Grand Haven	Dep.	5.15	9.20	2.20	1.30
2.10	6.35	11.40	6.40	...	10.30	Ferrysburg	...	5.20	9.30	2.30	5.35
2.05	6.27	11.33	6.35	...	10.20	Spring Lake	...	5.25	9.35	2.35	...
1.55	6.15	11.26	6.25	...	9.50	Nunica	...	5.35	9.50	2.50	...
1.46	6.05	11.18	6.15	...	9.15	Denison's	...	...	9.58	2.58	6.00
1.40	6.00	11.13	6.10	...	9.05	Coopersville	...	5.50	10.05	3.05	...
1.30	5.40	11.03	6.00	...	8.35	Berlin	...	6.00	10.20	3.20	...
1.15	5.20	10.50	5.40	p. m.	7.55	G. R. & I. Junction	...	6.15	10.25	3.35	6.20
1.10	5.10	10.45	5.35	2.10	7.45	Dep. Grand Rapids	Arr.	6.20	10.40	3.40	6.25
1.05	5.00	10.40	5.10	1.30	a. m.	Grand Rapids	...	6.25	10.50	3.50	6.30
12.45	4.40	10.25	4.50	1.40	...	Ada	...	6.40	11.07	4.05	...
12.30	4.20	10.10	4.30	11.00	...	Lowell	...	6.55	11.25	4.20	7.00
12.15	4.00	9.55	4.10	10.30	...	Saranac	...	7.08	11.40	4.35	1.00
12.00	3.45	9.40	3.55	10.00	...	Ionia	...	7.25	12.00	4.50	1.40
11.45	3.30	9.25	3.40	9.30	...	Muir	...	7.35	12.15	5.00	2.30
11.35	3.20	9.15	3.25	9.00	...	Pewamo	...	7.45	12.25	5.10	7.50
11.20	3.10	9.00	3.10	8.10	...	Fowler	...	7.55	12.35	5.20	4.00
11.00	2.50	8.45	2.50	7.05	...	Lyon's Mill	...	8.10	12.50	5.35	8.13
10.45	2.32	8.35	2.35	6.50	...	St. John's	...	8.20	1.00	5.45	5.10
10.40	2.25	8.30	2.20	6.20	...	Shepardsville	...	8.25	1.05	5.55	8.30
10.30	2.15	8.15	...	6.05	...	Ovid	...	8.32	1.12	6.02	...
10.20	2.05	8.05	2.10	...	...	Burton	...	8.40	1.20	6.10	8.45
9.00	...	7.25	...	...	...	Dep. Owosso Junction	Arr.	9.50	2.15	7.00	...
7.40	...	6.17	...	...	...	Arr. Owosso Junction, M. C.	Dep.	11.25	6.25	8.45	...
7.32	...	6.07	...	...	...	Dep. Saginaw City	Arr.	11.45	...	8.55	...
6.50	...	5.30	...	...	...	Dep. East Saginaw	Arr.	12.25	...	9.30	8.55
10.05	1.40	7.40	1.55	6.00	1093	Dep. Bay City	Arr.	8.55	01.40	8.35	7.05
10.00	1.35	7.35	1.50	a. m.	1101	Arr. Owosso Junction	Dep.	9.00	1.45	6.30	8.58
9.52	1.25	7.25	1.40	...	1131	Owosso	...	9.10	1.55	6.43	9.05
9.42	1.15	7.15	1.30	...	1183	Corunna	...	9.20	2.05	6.53	...
9.35	1.05	7.05	1.20	...	122	Vernon	...	9.30	2.15	7.05	9.20
9.20	12.55	6.50	1.05	...	1261	Durand	...	9.38	2.25	7.15	...
9.05	12.40	6.37	12.50	...	1333	Arr. Gaines	Dep.	9.50	2.40	7.30	...
8.55	12.30	6.23	12.40	...	1381	Linden	...	10.00	2.50	7.40	9.50
8.45	12.20	6.20	12.30	...	1421	Fenton	...	10.10	3.00	...	10.00
8.30	...	...	12.14	...	...	Dep. Holly	Arr.	10.40	...	8.05	3.48
7.59	...	...	11.30	...	...	Arr. Holly	Dep.	11.15	...	8.36	4.35
7.00	...	...	10.20	...	...	Flint	...	12.22	...	9.40	5.45
6.30	...	...	9.45	...	...	E. Saginaw	...	12.50	...	10.20	6.20
8.40	12.20	...	12.30	...	1421	Dep. Bay City	Arr.	10.10	3.09	7.50	10.00
8.30	12.05	6.07	12.15	...	1471	Arr. Holly	Dep.	10.20	3.10	8.00	6.10
8.15	11.50	5.55	12.00	...	1533	Davisburgh	...	10.30	3.23	8.15	6.30
8.10	11.45	5.50	11.55	...	1551	Clarkston	...	10.35	3.28	8.20	6.35
7.50	11.40	5.45	11.50	...	1571	Waterford	...	10.40	3.33	8.25	6.40
7.55	11.30	5.35	11.40	...	1651	Drayton Plains	...	10.55	3.45	8.40	6.55
7.35	11.10	5.20	11.20	...	1701	Pontiac	...	11.10	4.00	8.55	7.10
7.25	11.00	5.10	11.05	...	176	Birmingham	...	11.25	4.10	9.05	7.25
7.10	10.40	4.55	10.45	...	1841	Royal Oak	...	11.35	4.30	9.25	7.40
7.05	10.35	4.50	10.40	...	1851	Milwaukee Junction	...	11.40	4.35	9.30	7.45
6.50	10.20	4.30	10.25	...	189	L. S. & M. S. Junction	...	11.55	4.50	9.45	8.00
a. m.	a. m.	p. m.	p. m.	...	...	Dep. Detroit	Arr.	a. m.	p. m.	p. m.	a. m.

† Fl. tation, train stops only on Signal. No. 5 makes connection at Holly for all Saginaw Valley points. No. 7 has Wagner Sleeper Detroit to Grand Rapids. B, breakfast. D, dinner. S, supper.

# MICHIGAN AIR LINE.

In effect March 30, 1885.

LENOX TO JACKSON.					JACKSON TO LENOX.				
Miles.	STATIONS.	Pass.	Pass. Mixed		STATIONS.	Pass.	Pass. Mixed		
			P.M.	A.M.			A.M.	P.M.	
0	LENOX ..... Lve.	5.55		9.35	JACKSON ..... Lve.		7.00	2.40	
7	Armada ..... "	6.15		10.00	Cooper Street..... "				
14	Romeo ..... "	6.30		10.30	Portage River..... "				
20	Washington..... "	6.45		10.55	Henrietta ..... "			3.20	
22	Shelby ..... "	6.50		11.05	Stockbridge ..... "	7.53		3.55	
25	D. & B. C. Crossing "	7.00		11.20	Mount Ferrier..... "				
26	Rochester ..... "	7.05		11.30	Pinekey ..... "		8.25	5.15	
32	Auburn ..... "	7.17		11.55	Hamburg ..... "	8.43		5.40	
				P.M.					
36	Pontiac..... { Arr	7.30		12.10	SOUTH LYON ..... Lve.		9.05	6.40	
	{ Lve			P.M.					
				A.M.					
40	Orchard Lake ..... "	2.40	5.30		New Hudson ..... "	9.15		7.00	
42	Walled Lake..... "	3.00	6.20		Wixom..... "	9.31		7.20	
51	Wixom..... "	3.10	6.35		Walled Lake..... "	9.38		7.30	
57	New Hudson..... "	3.22	6.55		Orchard Lake ..... "	10.00		7.55	
59	SOUTH LYON ..... "	3.35	8.00		Pontiac..... { Arr	A.M.		8.05	
68	Hamburg..... "	3.55	8.43		{ Lve	6.35		2.00	
75	Pinekey..... "	4.14	9.10		Auburn ..... "	6.45		2.15	
83	Mount Ferrier..... "				Rochester..... "	7.00		2.40	
88	Stockbridge ..... "	4.50	10.05		D. & B. C. Crossing..... "	7.05		2.50	
96	Henrietta..... "		10.35		Shelby ..... "	7.12		3.00	
100	Portage River..... "				Washington ..... "	7.17		3.10	
104	Cooper Street..... "				Romeo ..... "	7.30		3.35	
106	JACKSON ..... Arr.	5.40	11.15		Armada..... "	7.45		4.05	
					LENOX ..... Arr.	8.00		4.35	

## Chicago, Detroit & Grand Trunk Junction.

In Effect May 1st, 1885.

DETROIT TO PORT HURON.					PORT HURON TO DETROIT.				
No. 5. Express Daily.	No. 3. Pass.	No. 1. Express.	Miles from Detroit.	STATIONS.	Miles from Pt. Huron.	No. 2. Exp. aily.	No. 4. Mail.		No. 12. Mixed.
11.00 pm	4.20	8.00 am		Lve..... DETROIT.... Arr.	58	9.45	6.10		3 00 pm
		8.00 am		..... Detroit Junction....	58	9.45	6.10		
11.18 "	4.45	8.23 am	4	..... Milwaukee Junction....	54	9.25	5.50		2.50 pm
		8.45 am	16	Arr. } ..... Fraser... { Lve.	42	8.55	5.30		1.50 pm
				Lve. } ..... Mount Clemens.....	37	8.28	5.20		1.30 pm
11.52 "	5.20	8.55 am	21	..... Chesterfield.....	32	8.40	5.10		1.13 pm
	5.30	9.05 am	26	..... New Haven.....	27	8.30	5.00		12.53 pm
12.09 "	5.42	9.15 am	31	Arr. } Lenox..... { Lve.	21	8.15	4.47		12.33 pm
		9.30 am	37	Lve. } ..... Smith'r Creek.....	10	7.50	4.25		11.55 am
	6.17	9.50 am	48	Chicago & Grand Tr'k Junc.	3	7.20	4.10		11.20 am
12.50 am	6.30	10.05 am	55	Arr..... Port Huron.... Lve.		7.10	3.50		11.00 am
1.10 "	6.50	10.25 am	58	(Fort Gratiot.)					

" Good Book Keeping to a man of business is equal to one-half his capital,"  
—COMMISSIONER FONBLANQUE.

**DAY'S COMMERCIAL COLLEGE.**  
College Rooms; 96 King St. West, } JAMES E. DAY, Principal.  
OPPOSITE ROYAL OPERA HOUSE.

See our Sawmill and Engines, Shingle Mill, Chopper, Ewart Chains, Saws and Saw Furnishings in operation at the Exhibitions in Toronto and Sherbrooke, Que., this fall.

**SAW MILL MACHINERY OUR SPECIALTY,**

IN ALL ITS VARIETIES.

THE FIRE-PROOF CHAMPION

HEAVY AND PORTABLE.

\* SAW MILL \*



Branch Works: Winnipeg, Manitoba.  
Eastern (154 St. James St., Montreal.  
Offices: (30 St. Paul Street, Quebec.

Heavy, substantial Engines, from six to 200 horse power, noted for their great durability, simplicity and economy. Boilers of all the leading designs of the best tested plates, steel and iron, made in very best style, tested and guaranteed, prices very low. Water Wheels, Shingle Mills (several varieties), Lath Mills and Bolters. Wood Working Machinery—Saws, Saw Tools, Belting. Ewart Drive Chain, for elevating and conveying everything.

**WATEROUS ENGINE WORKS CO., Brantford, Canada**

**STEEL WIRE DOOR MATS**

ARE UNSURPASSED FOR

**DURABILITY AND CLEANLINESS.**

— FOR —

Churches, Hotels, Schools, Elevators, Steam-Boats, Street Cars, Private Residences, are the best Mats ever used.

OFFICES AND FACTORY:

**6 WELLINGTON ST. WEST,  
TORONTO, ONTARIO.**

# John Macdonald & Co.,

## TORONTO.

You are doubtless aware that the COTTON MANUFACTURERS of the Dominion have recently entered into a

### COMBINATION

to Advance Prices, to Shorten Credits and reduce discounts, and that the same (we are informed) is to be binding, under penalties, for a period of twelve months.

The advance asked by Manufacturers for immediate and next Spring deliveries ranges from ten to fifteen per cent., and affects to that extent all the following classes of goods, viz. :

**Grey and White Cottons,**

**Shirtings, Sheetings,**

**White Cottons, Pillow Cottons,**

**Cottonades, Ducks, Denims,**

**Ticks and Awnings, Drills,**

**Linings, Canton Flannels,**

**Etc., Etc., Etc.**

Although we have sold within the last few days, in view of this advance, hundreds of bales of these classes of goods, we are still in most of the lines fully assorted, and we have determined to continue to sell so long as they last at

**OLD PRICES,**

**OLD TERMS,**

**OLD DISCOUNTS.**

Such an opportunity for securing Stock on exceptionally reasonable terms very rarely occurs, and we trust that without delay you may take advantage of it. We will be pleased to have you call and examine the Stock, or will execute with the greatest care any orders with which you may entrust us.

**JOHN MACDONALD & CO.,**

21, 23, 25 and 27 Wellington Street East,

30, 32, 34 and 36 Front Street East,

And Manchester, England.

**TORONTO.**

