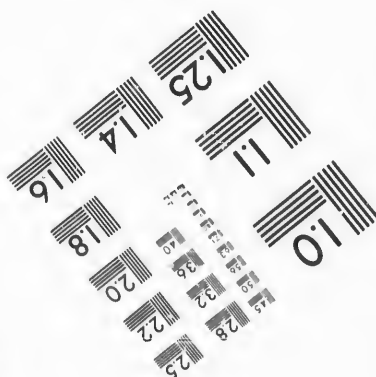
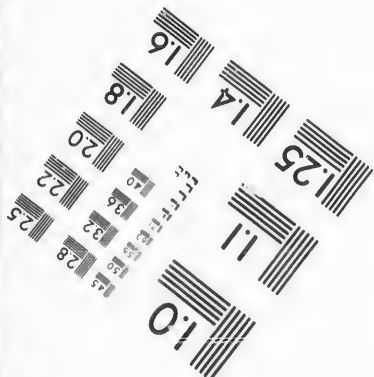
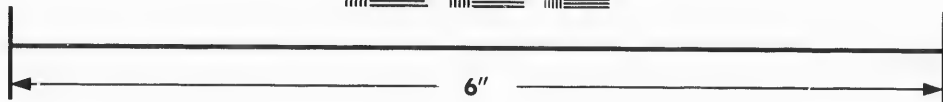
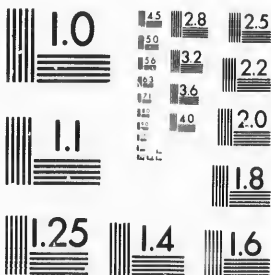


**IMAGE EVALUATION  
TEST TARGET (MT-3)**



**Photographic  
Sciences  
Corporation**

23 WEST MAIN STREET  
WEBSTER, N.Y. 14580  
(716) 872-4503

15 28  
16 32  
18 22  
20  
18

**CIHM/ICMH  
Microfiche  
Series.**

**CIHM/ICMH  
Collection de  
microfiches.**



Canadian Institute for Historical Microreproductions / Institut canadien de microreproductions historiques

10

**© 1987**

Technical and Bibliographic Notes/Notes techniques et bibliographiques

The Institute has attempted to obtain the best original copy available for filming. Features of this copy which may be bibliographically unique, which may alter any of the images in the reproduction, or which may significantly change the usual method of filming, are checked below.

L'Institut a microfilmé le meilleur exemplaire qu'il lui a été possible de se procurer. Les détails de cet exemplaire qui sont peut-être uniques du point de vue bibliographique, qui peuvent modifier une image reproduite, ou qui peuvent exiger une modification dans la méthode normale de filmage sont indiqués ci-dessous.

- |  |  |
|--|--|
| <input type="checkbox"/> Coloured covers/<br>Couverture de couleur   | <input type="checkbox"/> Coloured pages/<br>Pages de couleur   |
| <input type="checkbox"/> Covers damaged/<br>Couverture endommagée  | <input checked="" type="checkbox"/> Pages damaged/<br>Pages endommagées  |
| <input type="checkbox"/> Covers restored and/or laminated/<br>Couverture restaurée et/ou pelliculée  | <input type="checkbox"/> Pages restored and/or laminated/<br>Pages restaurées et/ou pelliculées  |
| <input type="checkbox"/> Cover title missing/<br>Le titre de couverture manque   | <input checked="" type="checkbox"/> Pages discoloured, stained or foxed/<br>Pages décolorées, tachetées ou piquées   |
| <input type="checkbox"/> Coloured maps/<br>Cartes géographiques en couleur   | <input type="checkbox"/> Pages detached/<br>Pages détachées  |
| <input type="checkbox"/> Coloured ink (i.e. other than blue or black)/<br>Encre de couleur (i.e. autre que bleue ou noire)   | <input checked="" type="checkbox"/> Showthrough/<br>Transparence   |
| <input checked="" type="checkbox"/> Coloured plates and/or illustrations/<br>Planches et/ou illustrations en couleur   | <input type="checkbox"/> Quality of print varies/<br>Qualité inégale de l'impression   |
| <input type="checkbox"/> Bound with other material/<br>Relié avec d'autres documents   | <input type="checkbox"/> Includes supplementary material/<br>Comprend du matériel supplémentaire   |
| <input type="checkbox"/> Tight binding may cause shadows or distortion<br>along interior margin/<br>La reliure serrée peut causer de l'ombre ou de la<br>distorsion le long de la marge intérieure   | <input type="checkbox"/> Only edition available/<br>Seule édition disponible   |
| <input type="checkbox"/> Blank leaves added during restoration may<br>appear within the text. Whenever possible, these<br>have been omitted from filming/<br>Il se peut que certaines pages blanches ajoutées<br>lors d'une restauration apparaissent dans le texte,<br>mais, lorsque cela était possible, ces pages n'ont<br>pas été filmées. | <input type="checkbox"/> Pages wholly or partially obscured by errata<br>slips, tissues, etc., have been refilmed to<br>ensure the best possible image/<br>Les pages totalement ou partiellement<br>obscurcies par un feuillet d'errata, une pelure,<br>etc., ont été filmées à nouveau de façon à<br>obtenir la meilleure image possible. |
| <input type="checkbox"/> Additional comments:<br>Commentaires supplémentaires:   |  |

This item is filmed at the reduction ratio checked below/  
Ce document est filmé au taux de réduction indiqué ci-dessous.

10X	14X	18X	22X	26X	30X
<input type="checkbox"/>	<input type="checkbox"/>	<input type="checkbox"/>	<input checked="" type="checkbox"/>	<input type="checkbox"/>	<input type="checkbox"/>
12X	16X	20X	24X	28X	32X

The copy filmed here has been reproduced thanks to the generosity of:

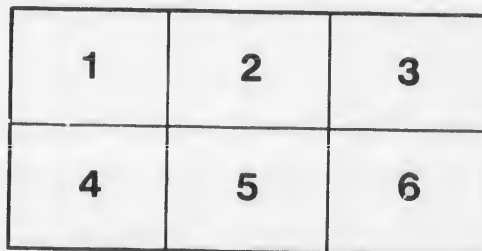
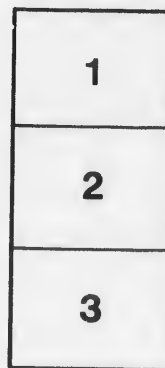
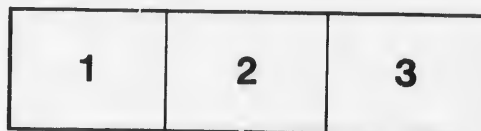
The Nova Scotia  
Legislative Library

The images appearing here are the best quality possible considering the condition and legibility of the original copy and in keeping with the filming contract specifications.

Original copies in printed paper covers are filmed beginning with the front cover and ending on the last page with a printed or illustrated impression, or the back cover when appropriate. All other original copies are filmed beginning on the first page with a printed or illustrated impression, and ending on the last page with a printed or illustrated impression.

The last recorded frame on each microfiche shall contain the symbol  $\rightarrow$  (meaning "CONTINUED"), or the symbol  $\nabla$  (meaning "END"), whichever applies.

Maps, plates, charts, etc., may be filmed at different reduction ratios. Those too large to be entirely included in one exposure are filmed beginning in the upper left hand corner, left to right and top to bottom, as many frames as required. The following diagrams illustrate the method:



L'exemplaire filmé fut reproduit grâce à la générosité de:

The Nova Scotia  
Legislative Library

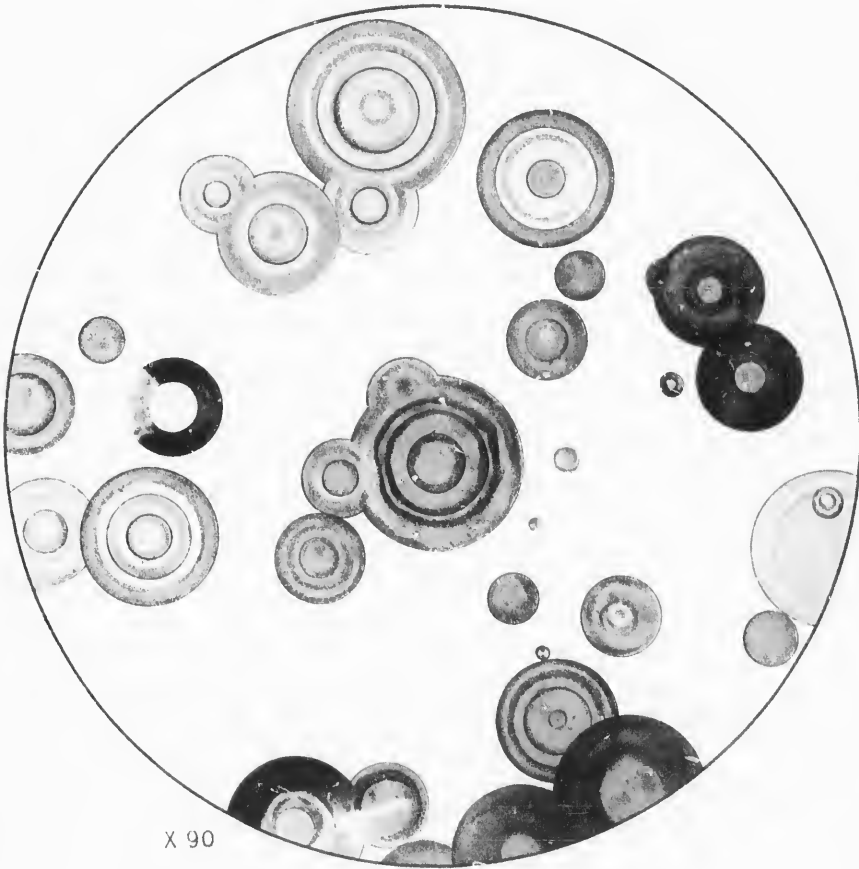
Les images suivantes ont été reproduites avec le plus grand soin, compte tenu de la condition et de la netteté de l'exemplaire filmé, et en conformité avec les conditions du contrat de filmage.

Les exemplaires originaux dont la couverture en papier est imprimée sont filmés en commençant par le premier plat et en terminant soit par la dernière page qui comporte une empreinte d'impression ou d'illustration, soit par le second plat, selon le cas. Tous les autres exemplaires originaux sont filmés en commençant par la première page qui comporte une empreinte d'impression ou d'illustration et en terminant par la dernière page qui comporte une telle empreinte.

Un des symboles suivants apparaîtra sur la dernière image de chaque microfiche, selon le cas: le symbole  $\rightarrow$  signifie "A SUIVRE", le symbole  $\nabla$  signifie "FIN".

Les cartes, planches, tableaux, etc., peuvent être filmés à des taux de réduction différents. Lorsque le document est trop grand pour être reproduit en un seul cliché, il est filmé à partir de l'angle supérieur gauche, de gauche à droite, et de haut en bas, en prenant le nombre d'images nécessaire. Les diagrammes suivants illustrent la méthode.

SPOTS OF IRON OXIDE ON AMETHYST.



X 90

M<sup>r</sup> F. & E. Lith<sup>r</sup> Edin<sup>r</sup>

2338

UN

THE  
chem  
of th  
situa  
scar  
opin  
that  
Ros  
foll  
of m  
by  
he  
mir  
oxi  
oft-  
bol  
and  
15  
gro  
Sax  
do  
am

ON AN  
UNDESCRIBED VARIETY OF AMETHYST.

BY PROFESSOR DUNS, D.D.

*Read before the Royal Physical Society 21st April 1880.*

THE place of the amethyst in systematic mineralogy, its chemical constituents, crystallographic form, the characters of the species of which it is a variety, its colour, geognostic situations, and geographic distribution are so well known, as scarcely to call for remark. There is still some difference of opinion as to its constituents, traceable no doubt to the fact, that these are not constant, but vary in different specimens. Rose's analysis, which is that most generally received, is as follows: silica 97.50, alumina 0.75, iron oxide and traces of manganese 0.75. In a Brazilian specimen, Heintz (quoted by Dana) found traces of magnesia and soda, whose presence he thinks accounts for the characteristic colour of this mineral. Others hold this to be due to a small percentage of oxide of manganese. Amethyst occurs in veins, or lining the oft-described agate balls. "Crystals within the geodes or hollow agate balls are very often of an amethyst colour, and some are very fine" (Cronstedt's "Mineralogy," vol. i., p. 151, 1788). I am able to show to the Society, a very beautiful group of pure amethyst crystals in an agate ball from Saxony. The gem known as oriental amethyst is spinel or *dodecahedral corundum*, a widely different mineral with an amethystine hue. The constituents of spinel are alumina

74.50, silica 15.56, magnesia 8.25, oxide of iron 1.56, lime 0.75.

The variety of amethyst which forms the subject of this notice was presented to me, without any reference whatever to its scientific interest, but simply as an ornamental stone, by the Rev. Dr Paterson, New Glasgow, Nova Scotia, who had obtained it at Prince Arthur's Landing, on the north shore of Lake Superior, in August 1878. Looking at it with a good lens I remarked to Dr Paterson, the specimen is altogether unlike any I have seen. The dark red crystalline substance on the faces of the hexagonal pyramids is not deposited in a homogeneous layer, but seems to consist of innumerable spots, I should say of iron oxide. As the donor thought it must have been described, I consulted most of the leading authorities, without, however, finding any reference to this variety. In a note dated August 2, 1879, Dr Paterson says, "I find that the amethyst from Lake Superior has been analysed by Sterry Hunt of the Canadian Geological Survey, who discovered the colouring matter to be oxide of iron *before you.*" On being asked for a reference, he informed me in a subsequent note, that having failed to find it, he had written to Principal Dawson, Montreal, for information. Principal Dawson, writing in the absence of Dr Hunt from town, on November 5, 1879, says—"I write now merely to state what I know as to the matter referred to. The ferruginous coating which you mention is very common on crystals of amethyst from Thunder Bay, and seems to have been simply the latest coat of quartz deposited on the crystals, and containing peroxide of iron in little rounded hollow concretions with radiating spicules. This mode of arrangement of oxide of iron is not unusual in reddish agates from Nova Scotia and elsewhere, though with various modifications in detail. I am not aware that it has been particularly described, nor that any special cause of it is known further than the general one of molecular and crystalline aggregation, which has to do duty in the explanation of an infinity of curious forms in agates and other forms of quartz. I cannot find that Dr Hunt has published any particular account of the peculiar appearance in the Thunder Bay

amethysts." A thin slice prepared for the microscope, and magnified ninety diameters, presented an appearance well shown in the somewhat coarse, but highly characteristic plate which accompanies this notice. At my request Professor Crum Brown kindly took charge of a fragment which he entrusted to Dr Gibson for analysis, who reported on the specimen as follows :

" University of Edinburgh, *March 27th*, 1879.

" *Report upon Crystal of Amethyst Quartz.*

" A qualitative examination was made with a view to determine the nature of the red colouring matter deposited underneath the surface of the crystal. The result of this examination showed the presence of iron, and the absence of copper and other heavy metals. Ferric oxide being of very common occurrence in quartz, there is no reason to doubt that it is the red colouring matter in the crystal examined.

" J. GIBSON, Ph.D."

My first impressions as to the colouring matter of the six-sided crystals of this specimen were thus verified. It might, however, be well to carry the analysis farther by testing for soda, magnesia, or manganese, having previously marked the degree of intensity of the violet blue colour of the specimen. But, apart from this, it will be seen from the pieces in the lump and in section now exhibited, that they are made up as follows: The base on which the crystals rest is a thin layer of fine vesicular trap. Above this is a mass of highly crystalline semi-transparent quartz, about an inch in thickness, thickly packed but yet showing the planes of the crystals less or more well marked, and, on the top of this a thin layer, of granular-like amorphous quartz, out of which the definitely crystallised amethyst proper seems to rise. This may or may not be generally the order of the layers, but in the specimens now before us it is well marked. The dirty red colouring matter is confined to the faces of the hexagonal pyramids—the characteristic crystalline forms of quartz—and is, for the most part, deposited in pretty separate *annuli*, ring within ring. In the specimens now under notice I have not seen any traces



of the "radiating spicules," referred to by Dr Dawson. Nor are the rings on the same plane. When examined through a good binocular they are seen to lie at different levels, a fact which seems to warrant the inference that the highly crystalline glaze, so to speak, in which they lie, consists of different layers. The spots are not in all cases perfectly circular, as may be seen by referring to the accompanying plate. It would not be profitable to speculate on the probable explanation of those molecular aggregations. I may, however, ask the Society to look at the so-called *morpholites* or clay concretions, and the dolomites from Cumberland, now on the table, as illustrating, on a large scale indeed, in a somewhat striking way, the close resemblance between them in point of form and the spots figured on the plate. This resemblance suggests a topic of great interest and of which little has yet been made. I refer to the analogies between the power of concretion and that of crystallisation. But I do not wish to make more of this resemblance than to indicate the fact. The crystalline matrix in which the spots occur has, for want of a better term, been called a glaze. Is the presence of this necessary in order to the iron oxide arranging itself in such spots? In the New College Museum is a large lump of rock crystal, on which the faces of the six-sided pyramid are covered with a layer of iron oxide, lying wholly on the surface, in the form of rough amorphous particles, and destitute of this glaze.

As I have been unable to find any published description of this variety of amethyst, and as it presents some features of considerable interest, I have thought it not unworthy the attention of the Society. The plate is an attempt to reproduce, in a rough way, the colours and the forms of some of the spots shown in the section, exhibited to the Society under the microscope.



