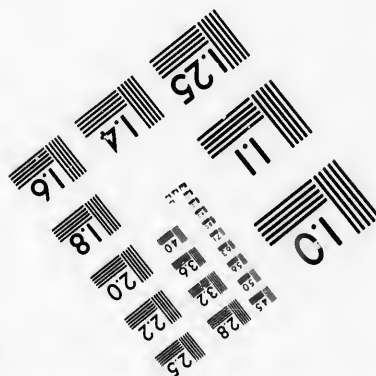
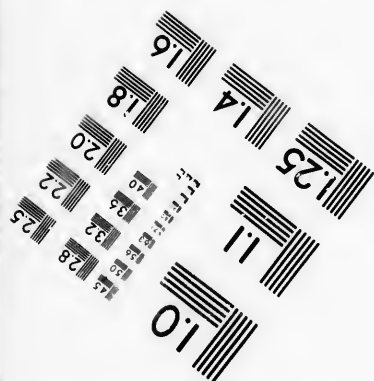
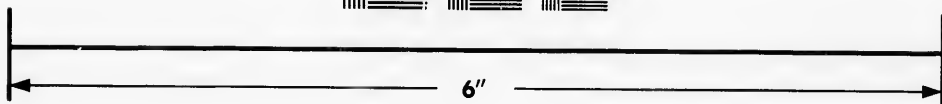
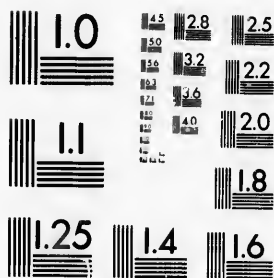


**IMAGE EVALUATION  
TEST TARGET (MT-3)**



**Photographic  
Sciences  
Corporation**

23 WEST MAIN STREET  
WEBSTER, N.Y. 14580  
(716) 872-4503

**CIHM/ICMH  
Microfiche  
Series.**

**CIHM/ICMH  
Collection de  
microfiches.**



**Canadian Institute for Historical Microreproductions / Institut canadien de microreproductions historiques**

**© 1986**

Technical and Bibliographic Notes/Notes techniques et bibliographiques

The Institute has attempted to obtain the best original copy available for filming. Features of this copy which may be bibliographically unique, which may alter any of the images in the reproduction, or which may significantly change the usual method of filming, are checked below.

L'Institut a microfilmé le meilleur exemplaire qu'il lui a été possible de se procurer. Les détails de cet exemplaire qui sont peut-être uniques du point de vue bibliographique, qui peuvent modifier une image reproduite, ou qui peuvent exiger une modification dans la méthode normale de l'image sont indiqués ci-dessous.

- Coloured covers/  
Couverture de couleur
- Covers damaged/  
Couverture endommagée
- Covers restored and/or laminated/  
Couverture restaurée et/ou pelliculée
- Cover title missing/  
Le titre de couverture manque
- Coloured maps/  
Cartes géographiques en couleur
- Coloured ink (i.e. other than blue or black)/  
Encre de couleur (i.e. autre que bleue ou noire)
- Coloured plates and/or illustrations/  
Planches et/ou illustrations en couleur
- Bound with other material/  
Relié avec d'autres documents
- Tight binding may cause shadows or distortion along interior margin/  
La reliure serrée peut causer de l'ombre ou de la distorsion le long de la marge intérieure
- Blank leaves added during restoration may appear within the text. Whenever possible, these have been omitted from filming/  
Il se peut que certaines pages blanches ajoutées lors d'une restauration apparaissent dans le texte, mais, lorsque cela était possible, ces pages n'ont pas été filmées.

- Coloured pages/  
Pages de couleur
- Pages damaged/  
Pages endommagées
- Pages restored and/or laminated/  
Pages restaurées et/ou pelliculées
- Pages discoloured, stained or foxed/  
Pages décolorées, tachetées ou piquées
- Pages detached/  
Pages détachées
- Showthrough/  
Transparence
- Quality of print varies/  
Qualité inégale de l'impression
- Includes supplementary material/  
Comprend du matériel supplémentaire
- Only edition available/  
Seule édition disponible
- Pages wholly or partially obscured by errata slips, tissues, etc., have been refilmed to ensure the best possible image/  
Les pages totalement ou partiellement obscurcies par un feuillet d'errata, une pelure, etc., ont été filmées à nouveau de façon à obtenir la meilleure image possible.

Additional comments: [Printed ephemera] 1 sheet (verso blank)  
Commentaires supplémentaires:

This item is filmed at the reduction ratio checked below/  
Ce document est filmé au taux de réduction indiqué ci-dessous.

10X	12X	14X	16X	18X	20X	22X	24X	26X	28X	30X	32X
								/			

The copy filmed here has been reproduced thanks to the generosity of:

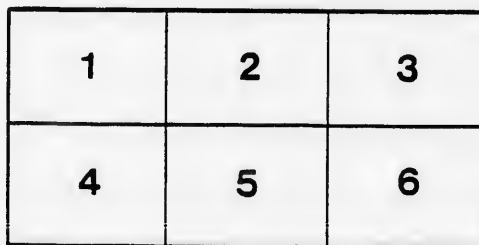
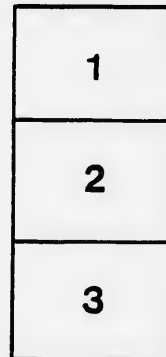
D.B. Weldon Library  
University of Western Ontario  
(Regional History Room)

The images appearing here are the best quality possible considering the condition and legibility of the original copy and in keeping with the filming contract specifications.

Original copies in printed paper covers are filmed beginning with the front cover and ending on the last page with a printed or illustrated impression, or the back cover when appropriate. All other original copies are filmed beginning on the first page with a printed or illustrated impression, and ending on the last page with a printed or illustrated impression.

The last recorded frame on each microfiche shall contain the symbol  $\rightarrow$  (meaning "CONTINUED"), or the symbol  $\nabla$  (meaning "END"), whichever applies.

Maps, plates, charts, etc., may be filmed at different reduction ratios. Those too large to be entirely included in one exposure are filmed beginning in the upper left hand corner, left to right and top to bottom, as many frames as required. The following diagrams illustrate the method:



L'exemplaire filmé fut reproduit grâce à la générosité de:

D.B. Weldon Library  
University of Western Ontario  
(Regional History Room)

Les images suivantes ont été reproduites avec le plus grand soin, compte tenu de la condition et de la netteté de l'exemplaire filmé, et en conformité avec les conditions du contrat de filmage.

Les exemplaires originaux dont la couverture en papier est imprimée sont filmés en commençant par le premier plat et en terminant soit par la dernière page qui comporte une empreinte d'impression ou d'illustration, soit par le second plat, selon le cas. Tous les autres exemplaires originaux sont filmés en commençant par la première page qui comporte une empreinte d'impression ou d'illustration et en terminant par la dernière page qui comporte une telle empreinte.

Un des symboles suivants apparaîtra sur la dernière image de chaque microfiche, selon le cas: le symbole  $\rightarrow$  signifie "A SUIVRE", le symbole  $\nabla$  signifie "FIN".

Les cartes, planches, tableaux, etc., peuvent être filmés à des taux de réduction différents. Lorsque le document est trop grand pour être reproduit en un seul cliché, il est filmé à partir de l'angle supérieur gauche, de gauche à droite, et de haut en bas, en prenant le nombre d'images nécessaire. Les diagrammes suivants illustrent la méthode.

# CHANCERY OF LA

IN THE

# TOWNSHIP OF

---

## IN CHANCERY: ARCOAT VS.

---

Pursuant to the decree made in this cause, and with the app  
Chancery, at London, there will be sold by Public Auction, by

**Mr. Peter C**

Auctioneer, at his AUCTION ROOMS, on Richm

# EVERY SALE LANDS

IN THE

# OF MCGILLIVRAY

VS. CORBETT.

with the approbation of James Shanly, Esquire, the Master in

# C. Barnard,

ROOMS, on Richmond Street, in the City of London, on

# MR. Peter C.

Auctioneer, at his AUCTION ROOMS, on Richmond

## SATURDAY, the 24th day

at Noon, the following Property,

**PARCEL 1.** Lot No. 22 in the 8th Concession of the T  
containing 100 acres more or less. This is an improved farm, of which about 72 acres

**PARCEL 2.** Part of the south half of Lot No. 13 in the 14  
containing 25 acres more or less, and described as follows, that is to say: Commencing  
Concession Line thirty rods, then east forty rods parallel with the south boundary line  
then east 140 rods parallel with the south boundary line, then south 20 rods parallel with  
line to the place of beginning. This parcel consists of good pasture land. There are

**PARCEL 3.** Part of Lot No. 15 in the 15th Concession of t  
an acre more or less, described as follows, that is to say: Commencing at the distance of  
north from the south-east angle of said lot, thence north along the said Concession line  
the side lines of said lot 12 rods and 3-4 of a rod, then south parallel with the Concess  
with the side lines of said lot 12 rods and 3-4 of a rod more or less to the place of be

There are upon this land a Dwelling House and a Shoe Shop

---

Each parcel will be sold separately, and each parcel will be sold by  
reserved bidding.

The purchaser of each parcel will be required to pay down  
his purchase money, and the balance of it within one month thereafter, without interest.

In all other respects the conditions of sale are the standing

---

Further particulars will be made known at the time of sale to  
Solicitor, to Messrs. Cronyn, Kew & Betts, Solicitors, London, or to the Auctioneer.

## W. R. MEREDITH,

Vendor's Solicitor, 74 Dundas St. West, LONDON

Dated 25th July, A. D. 1878.

(Free Press Printing)

# C. Barnard,

OMS, on Richmond Street, in the City of London, on

## th day of AUGUST, 1878

llowing Property, that is to say :

ision of the Township of McGillivray, east of the Centre Road,  
ich about 72 acres are cleared.

. 13 in the 14th Concession of the said Township of McGillivray,  
say : Commencing at the south-westerly angle of the said lot, then north along the  
outh boundary line of said lot, then south ten rods parallel with the Concession Line,  
20 rods parallel with the Concession line, then west 180 rods along the south boundary  
re land. There are no buildings upon it.

oncession of the said Township of McGillivray, containing 3-4 of  
g at the distance of 6 rods, 6 feet 2 inches and 1-4 of an inch on the said Concession line  
said Concession line 9 rods, 9 feet 3 inches and 3-8 of an inch, then west parallel with  
l with the Concession line 9 rods, 9 feet 3 inches and 3-8 of an inch, then east parallel  
to the place of beginning.

nd a Shoe Shop.

---

parcel will comprise one lot, and will be sold subject to a  
to pay down at the time of sale a deposit of ten per cent. of  
fter, without interest.  
e the standing conditions of the Court of Chancery.

---

me time of sale, and may be had by applying to the Vendor's  
the Auctioneer.

## J. SHANLY,

West, LONDON.

Master in Chancery at LONDON.

(Free Press Printing Co.)



