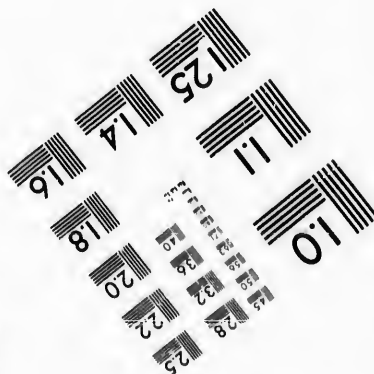
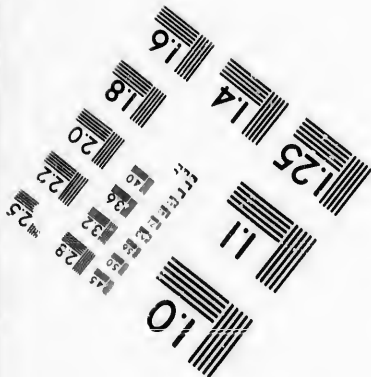
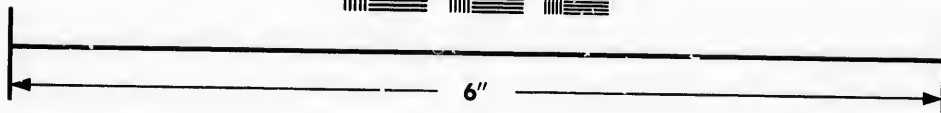
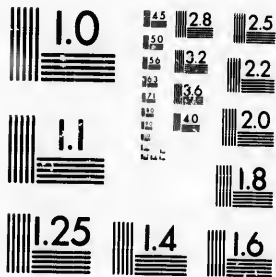


IMAGE EVALUATION
TEST TARGET (MT-3)



Photographic
Sciences
Corporation

23 WEST MAIN STREET
WEBSTER, N.Y. 14580
(716) 872-4503

1.5 1.8 2.0 2.2 2.5
2.8 3.2 3.6 4.0

**CIHM/ICMH
Microfiche
Series.**

**CIHM/ICMH
Collection de
microfiches.**



Canadian Institute for Historical Microreproductions / Institut canadien de microreproductions historiques

10

© 1986

Technical and Bibliographic Notes/Notes techniques et bibliographiques

The Institute has attempted to obtain the best original copy available for filming. Features of this copy which may be bibliographically unique, which may alter any of the images in the reproduction, or which may significantly change the usual method of filming, are checked below.

L'Institut a microfilmé le meilleur exemplaire qu'il lui a été possible de se procurer. Les détails de cet exemplaire qui sont peut-être uniques du point de vue bibliographique, qui peuvent modifier une image reproduite, ou qui peuvent exiger une modification dans la méthode normale de filmage sont indiqués ci-dessous.

- Coloured covers/
Couverture de couleur
- Covers damaged/
Couverture endommagée
- Covers restored and/or laminated/
Couverture restaurée et/ou pelliculée
- Cover title missing/
Le titre de couverture manque
- Coloured maps/
Cartes géographiques en couleur
- Coloured ink (i.e. other than blue or black)/
Encre de couleur (i.e. autre que bleue ou noire)
- Coloured plates and/or illustrations/
Planches et/ou illustrations en couleur
- Bound with other material/
Relié avec d'autres documents
- Tight binding may cause shadows or distortion along interior margin/
La reliure serrée peut causer de l'ombre ou de la distorsion le long de la marge intérieure
- Blank leaves added during restoration may appear within the text. Whenever possible, these have been omitted from filming/
Il se peut que certaines pages blanches ajoutées lors d'une restauration apparaissent dans le texte, mais, lorsque cela était possible, ces pages n'ont pas été filmées.
- Additional comments: [Printed ephemera] [4] p. There are some creases in the middle of the pages.
Commentaires supplémentaires:

- Coloured pages/
Pages de couleur
- Pages damaged/
Pages endommagées
- Pages restored and/or laminated/
Pages restaurées et/ou pelliculées
- Pages discoloured, stained or foxed/
Pages décolorées, tachetées ou piquées
- Pages detached/
Pages détachées
- Showthrough/
Transparence
- Quality of print varies/
Qualité inégale de l'impression
- Includes supplementary material/
Comprend du matériel supplémentaire
- Only edition available/
Seule édition disponible
- Pages wholly or partially obscured by errata slips, tissues, etc., have been refilmed to ensure the best possible image/
Les pages totalement ou partiellement obscurcies par un feuillet d'errata, une pelure, etc., ont été filmées à nouveau de façon à obtenir la meilleure image possible.

This item is filmed at the reduction ratio checked below/
Ce document est filmé au taux de réduction indiqué ci-dessous.

10X	14X	18X	22X	26X	30X
<input type="checkbox"/>	<input type="checkbox"/>	<input type="checkbox"/>	<input type="checkbox"/>	<input checked="" type="checkbox"/>	<input type="checkbox"/>
12X	16X	20X	24X	28X	32X

The copy filmed here has been reproduced thanks to the generosity of:

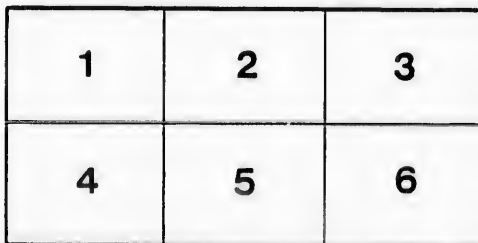
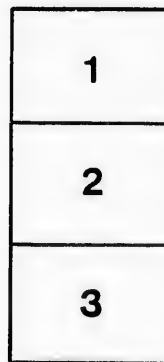
D. B. Weldon Library
University of Western Ontario
(Regional History Room)

The images appearing here are the best quality possible considering the condition and legibility of the original copy and in keeping with the filming contract specifications.

Original copies in printed paper covers are filmed beginning with the front cover and ending on the last page with a printed or illustrated impression, or the back cover when appropriate. All other original copies are filmed beginning on the first page with a printed or illustrated impression, and ending on the last page with a printed or illustrated impression.

The last recorded frame on each microfiche shall contain the symbol \rightarrow (meaning "CONTINUED"), or the symbol ∇ (meaning "END"), whichever applies.

Maps, plates, charts, etc., may be filmed at different reduction ratios. Those too large to be entirely included in one exposure are filmed beginning in the upper left hand corner, left to right and top to bottom, as many frames as required. The following diagrams illustrate the method:



L'exemplaire filmé fut reproduit grâce à la générosité de:

D. B. Weldon Library
University of Western Ontario
(Regional History Room)

Les images suivantes ont été reproduites avec le plus grand soin, compte tenu de la condition et de la netteté de l'exemplaire filmé, et en conformité avec les conditions du contrat de filmage.

Les exemplaires originaux dont la couverture en papier est imprimée sont filmés en commençant par le premier plat et en terminant soit par la dernière page qui comporte une empreinte d'impression ou d'illustration, soit par le second plat, selon le cas. Tous les autres exemplaires originaux sont filmés en commençant par la première page qui comporte une empreinte d'impression ou d'illustration et en terminant par la dernière page qui comporte une telle empreinte.

Un des symboles suivants apparaîtra sur la dernière image de chaque microfiche, selon le cas: le symbole \rightarrow signifie "A SUIVRE", le symbole ∇ signifie "FIN".

Les cartes, planches, tableaux, etc., peuvent être filmés à des taux de réduction différents. Lorsque le document est trop grand pour être reproduit en un seul cliché, il est filmé à partir de l'angle supérieur gauche, de gauche à droite, et de haut en bas, en prenant le nombre d'images nécessaire. Les diagrammes suivants illustrent la méthode.

If you see it in the "London Free Press" it is so.

READ AND REFLECT.

NOTICE TO OUR PATRONS—If the individual members of an audience would stop to think for just an instant, they would undoubtedly appreciate the fact that the habit of rising from one's seat and leaving the theatre before the curtain falls, is a most annoying one, and one that should be stopped. We therefore beg our audiences to kindly remain in their seats until the close of the performance.

Evenings—doors open at 7:30; curtain rises at 8:15 sharp. Matinees—doors open at 1:30; curtain rises at 2:30 sharp.

The plan of the House will be kept at the confectionery parlors of Mr. Hewitt Fysh, King and Richmond Streets, corner of the Opera House building, where all seats may be reserved up till seven o'clock on the evening of performance.



LONDON, ONT.

Plan opens for each attraction two days in advance.

Seats can be secured by mail, telegraph or telephone. Telephone 732.

Physicians are requested to register at the Box Office, leaving seat number, as this will enable Ushers to find them if called for, without disturbing the audience.

Carriages can be ordered at the Box Office or of the Chief Usher.

Please report to the management any inattention on the part of the employees.

Overcoats, packages and umbrellas checked for a small charge.

For all lost articles apply at Box Office. Opera Glasses can be rented by applying to Ushers or at Box Office.

BETWEEN the Acts, and after the Opera is over go to the

OPERA + CIGAR STORE

For Cigars, Cigarettes, Etc. LOUIS RISK.

W. T. STRONG,

Dispensing Chemist
184 Dundas Street, LONDON - - - ONTARIO.

ASK FOR

Rivard's Special

English Stiff Hat.

Latest Fall Style.

ONLY \$2.00.

ALSO OUR

THEATRE HATS

A Nobby Soft Felt in Black, Blue and Brown, Just the thing for the Theatre.

Rivard

London's Fashionable Hatter.

400 RICHMOND STREET.

C. J. WHITNEY LESSEE AND MANAGER.
A. E. ROOTE LOCAL MANAGER.
FRED. L. EVANS DIRECTOR OF ORCHESTRA.
GUS. SCHABACKER STAGE MANAGER.
JAMES LAMB CHIEF USHER.

Saturday, Oct. 22nd, 1892.

PROGRAMME.

"THE PLAYERS"

with the young romantic actor,

EDWARD VROOM

—IN—

SHAKESPEARE'S COMEDY

"Taming of the Shrew"

AND A MODERN FARCE IN ONE ACT

"A REGULAR FIX."

(Programme Continued on Page 3.)

J. S. ASHPLANT. Telephone 881. J. S. BROWN.

ASHPLANT & BROWN

Magnetic Attraction on the Boards. The Greatest Show of the Season in

BOOTS & SHOES. Love's Young Dream of a New Fall Outfit Realized.

Domestic Bliss Assured to Buyers of **SLIPPERS & RUBBERS.**

Our Display cannot be equalled. Never excelled in Style or Price.

ADMISSION FREE TO SECURE BARGAINS AT THE

CENTRAL SHOE STORE.

(D. Regan's Old Stand, 145 Dundas Street.)

EXCUSE ME!

But this is our Twenty-First Season, and in this progressive age of lively competition and other good things, it pays everybody to be well informed. Readers of the Opera House Programme are advised that London possesses a haven of recompense for all lovers of Music, where everything in the music line, of the finest quality, can be obtained on the most liberal terms, at reasonable prices. That well known place is CHAS. F. COLWELL'S Popular Music House, 171 Dundas Street. There you will find one of the choicest assorted stocks in Canada; consisting of the various kinds of Musical Instruments, Music Books, Strings and Fittings, White Sewing Machines,—besides a fine display of Pianos and Organs, (both new and 2nd) by leading makers. Intending buyers are invited to call. Telephone 97 or 87.

CHAS. F. COLWELL,
Official Issuer of Marriage Licenses.

The only place in the City to get the latest

SCARFS.

Burns

The Furnisher.

A MAN

Wants to see you Between Acts

Jerry McDonald's

Across the Road.

181 KING STREET.

FOR SPACE IN THIS PROGRAMME APPLY TO

A. E. ROOTE, LOCAL MANAGER, OPERA HOUSE, CITY.

Look out for the "London Free Press" on all early morning trains.

Burns

* * **SAYS**
That the D B. Sac Suit
Will lead this Fall.

AND HE IS RIGHT.

**GREAT
PRIZE SALE**

Every Cash Customer buying One Dollar's
worth or more of

WALL PAPER,

WINDOW SHADES,

CORNICE POLES,

ARTISTS' MATERIALS,

PICTURE FRAMES,

PICTURES,

ETC., ETC., ETC.

Stands the chance of securing a Prize worth from \$1.00
to \$20.00 according to amount of purchase.

E. N. HUNT,
190 DUNDAS ST., LONDON.

Attractions Booked.

A partial list of the attractions that will follow in the course of the season, includes—Hand of Fate; Kate Emmett; Robert Lowning; Primrose and West's Minstrels; Under the Lion's Paw; Rhea; Conreld; The Bostonian; in Robln Hood; Guy Brothers' Minstrels; Ramsey Morris; Maud Granger; Private Secretary; Robert Mantell; C. B. Hanford, in a grand spectacular production of Julius Caesar; Good Old Times; Stowaway; Gus Hills' World of Novelties; Rosina Vokes; Tuxedo; After Dark; Jerry; James O'Neill; Margaret Mather; T. E. Shea; Katharine Rober; Ears Kendall; Lillian Lewis; Tar and Tartar; and many others of the strongest attractions on the road.

Between the Acts.

Primrose & West are coming.
Garments that always fit—at Burns.
The Shot-gun Policy—to know it's loaded.
"The Biggest Show on Earth"—at Burns.
A fire escape—Insurance.
The early bird catches the worm; but he finds it a tremendously long wait till dinner time.
Among the novel features in Primrose & West's Minstrels are Johnston, Riano and Bently in the funniest act ever put before the public—"The Monkey and the Farmer."

A name to conjure with—Herrmann's.
Read all the advertisements in this Programme, and you will have a "clinch" on the bargains.
"Judicious advertising is the keystone of success."
Everybody will be delighted at seeing Primrose & West again, for they have the best and strongest organization ever put together.

"How do you like my column of 'Comments and Clippings?'" asked the young editor of the old subscriber.
"Oh very well," replied the old subscriber, calmly. "I think you might improve it, though, by putting in fewer comments and more clippings."
Said a thousand-legged worm, as he gave a great squirm, Has any one seen a leg of mine?
If it can't be found, I'll have to get around,
On only nine hundred and ninety nine.

We call the attention of our business men to the PROGRAMME as an advertising medium. It reaches the class of people whose trade you want, and the way to get that trade is to make yourself known.
A complete freight train of fourteen cars, illuminated caboose and practical working engine, a magnificent scene of Niagara Falls by moonlight, with real mist, as seen from Suspension Bridge. The flight of the Fast Mail which crosses the stage at the rate of seventy miles an hour, and a realistic steamboat race and explosion on the Mississippi, are among the most novel scenes and mechanical effects shown in Lincoln J. Carter's scenic production, "The Fast Mail."

Marshall's * Mammoth * Livery

IS THE LARGEST AND THE OLDEST
ESTABLISHMENT IN THE CITY.

DOES THE LEADING BUSINESS IN

Carriages, Cabs, Coupes, *
*** Victorias, Busses, Etc.**

Every kind of Conveyance can be had there on the
shortest notice, by Telephone No. 436.

JAS. S. MARSHALL, Proprietor.

Dundas Street.

London, Ont.

Next Attraction.

SPECIAL STRONG COMPANY.

ALWAYS buy your . . .

FURNITURE

—AT THE WAREHOUSES OF—

The London Furniture Mfg. Co.

They are the largest manufacturers, and can
give you the best value and finest
assortment.

184 TO 198 KING STREET,
LONDON, - ONTARIO.

For Fashionable WELL MADE SUITS

. . . CALL ON . . .

Burns

The Tailor,

Dundas Street.

Artistic * Floral * Design

EITHER WEDDING, PRESENTATION, DINNER TABLE, OR FUNERAL.

GO TO **DILLOWAY,**

The Leading Florist.

248 Dundas Street.

Choicest Cut Flowers Always on Hand.

TELEPHONE 597.

◀AFTER THE PERFORMANCE▶

→STOP AT←

Harry McKenna's,

—FOR—

Choice Havana Cigars & *
* * Tobacco Snufferies.

225 Dundas Street.

Always Open After Performance.

SMITH BROS.

**Plumbers,
Steam and Gas Fitters.**

ESTIMATES FURNISHED ON APPLICATION.

All Work Warranted. Terms Moderate.

376 RICHMOND STREET.
(Opposite Masonic Temple.)

Telephone No. 538.

THE TECUMSEH, London, Ontario.



Leading Hotel of Western Ontario.

Large Sample Rooms Free of Charge.
Baggage and Passenger Elevator.

Only one Block from the Grand Opera House.

C. W. DAVIS,
PROPRIETOR.

White · Sulphur · Springs · Baths
FAMOUS HEALTH RESORT.
The Saratoga of Canada.
IN CONNECTION WITH THE HOTEL.

Great Attraction to Visitors Seeking Health.
C. W. DAVIS, Treasurer. A. D. HOLMAN, Manager.

* THE LATEST ENGLISH *
Collars, · Cuffs · and · Shirts.
ALL SIZES ALWAYS IN STOCK.

Burns

—DUNDAS STREET.—

A REGULAR FIX. THE PLAYERS.

HUGH DE BRASS.....	MR. VROOM
Surplus, a lawyer.....	Mr. Arbuckle
Abel Quick.....	Mr. Thomson
Chas. Surplus.....	Mr. Morrisson
Smiler, sheriff's officer.....	Mr. Fyffe
Porter.....	Mr. Demorest
Mrs. Carter.....	Miss Maynard
Emily.....	Miss Gifford
Matilda Jane.....	Miss Hayr

TAMING OF THE SHREW. In three acts and four scenes. THE PLAYERS.

PETRUCHIO.....	MR. EDWARD VROOM
Baptiste Minola.....	Mr. Charles Fyffe
Biondello.....	Mr. Fred Thomson
Pedro.....	Mr. Henry Demorest
Grumio.....	Mr. Maelyn Arbuckle
Nathaniel.....	Mr. Leigh Morrisson
Gregory.....	Mr. Barton Lee
A Cook.....	Mr. Basil Tetson
A Tailor.....	Mr. Leigh Morrisson
A Music Master.....	Mr. Basil Tetson
Katharine.....	Miss Gertrude Gifford
Curtis.....	Miss Agnes Maynard
Bianca.....	Miss Cora Hayr

(Programme Continued on Page 4.)

"That remains to be seen," as the boy said when he spilt the ink on the Table Cloth.

IT DON'T REMAIN TO BE SEEN THAT
BELTZ'S HATS WEAR WELL IT IS A KNOWN FACT.

E. Beltz, 144 Dundas St.

LEADING FASHIONABLE HATTER & FURRIER.

FINE QUALITY GOLD MEDAL

HATS. | FURS.

WORTH MONEY—Mrs. Binks—"The paper says Splasher got \$10,000 for his painting, 'The Last of the Buffalo.'"
Mr. Binks—"Yes, Buffalo is becoming so scarce that even the picture of one is worth money."

The Asiatic Buffalo is now sold by Beltz instead.

THE LEADING JEWELRY HOUSE
OF LONDON,

—FOR—

Diamonds, Watches, ·
· · and Fine Jewelry.

OPERA GLASSES FOR RENT.

THOS. GILLEAN,
402 Richmond Street.
Issuer of Marriage Licenses.

For Fine Finished Artistic Photos

→GO TO←

Westlake's *
* **Famous Studio**
201 Dundas Street.

Get the Latest Novelties.

Photo Etchings and Aristo Finish.

STUDIO ALL ON GROUND FLOOR.

City Views can be had.

Phone 571.

Wallace's Dining Hall AND CONFECTIONERY.

354 Richmond Street.

Lunches at all hours.

Hot Tea and Coffee.

Oysters in every style.

Choice Cakes,

Candles, Etc.

GIVE US A CALL.

OFFICE RESTAURANT

Opposite the Masonic Temple, Richmond St.

CHOICE WINES,
LIQUORS, ALES,
CIGARS, ETC.

Restaurant on the European Plan.
OYSTERS IN EVERY STYLE.

D. SARE,

Proprietor.

VASELINE.

EVERYBODY knows the great value of this remedy in the household, but everybody does not know that the imitations of it, which some second class druggists dishonestly palm off on their customers, have little or no value. What should be understood by the public is, that it is not a mere question of comparative value between "Vaseline" and the imitations, but that the imitations do not effect the wonderful healing results of the world renowned "Vaseline," and that they are not the same thing nor made in the same way. Besides this, many of the imitations are harmful, irritant and not safe to use, while true Vaseline is perfectly harmless.

Perfect safety therefore lies in buying only original packages put up by and marked with our name.

CHESEBROUGH M'FG CO.

DOUGHERTY & MOORE,

**Tailors
& Drapers**

187 1/2 Dundas Street.

New Goods for Fall and Winter Trade.

If you have not done business with us, come let us do business together

• • LADIES' TAILOR-MADE • •

COSTUMES & RIDING HABITS.

Burns

154 Dundas Street.

During the evening some delightful singing will be introduced by Basil Tetson, the noted Russian baritone.

Business Manager..... Mr. O. H. Sheppard
Stage Manager..... Mr. Chas. J. Fyffe
Director of Music..... Mr. Francis Cosby

The production under the personal direction of Mr. Edward Vroom.



Opera Glasses can be rented by applying to Ushers or at Box Office.

W. T. STRONG,

Dispensing *

* * Chemist

184 Dundas Street,

LONDON, - - - ONTARIO.

Parisian Steam Laundry

73 and 75 DUNDAS ST.



Laundry work transferred free of charge to and from Toronto, Hamilton, Brantford, Woodstock, Stratford, Guelph, London, St. Thomas, Chatham, Windsor and Sarnia.

J. K. SPRY, Manager.



THE FAST MAIL

NEXT Monday - Evening

The Scenic Triumph of the Age.

SEE

THESE

WONDERS

The Freight Train.
The Mail Train.
The Dago Dive.
The Great
Steamboat Race.
The Terrific
Explosion.

The Wonder of the World,
Niagara by Moonlight.

Between the Acts

GO TO

FYSH'S

FOR

Ice Cream, Soda Water, * * *
* * * Fine Confectionery, Etc.

Cor. Richmond and King Streets.
(Opera House Building.)

Branch at 220 Dundas Street.

The large class of people in London who like to see a great play interpreted by a great actor, supported by a powerful company, and produced with magnificence of scenic effect and gorgeous costuming, will have that desire gratified on November and 3rd, when Robert Downing, the foremost American tragedian, will be seen here in a grand production of the legitimate drama, the same in every respect as has won him honor and profit in the large cities.

The unexampled prosperity with which the season of Robert Downing, the favorite American Tragedian opened, has continued throughout his tour, and he will come to London with the proud distinction of having played to the largest receipts that have ever come to a tragedian starring in this country in the same space of time. Mr. Downing will bring here the same strong company, the same splendid special scenery, and the same gorgeous costumes as have helped to make his appearance so strong a drawing card in all the large cities.

