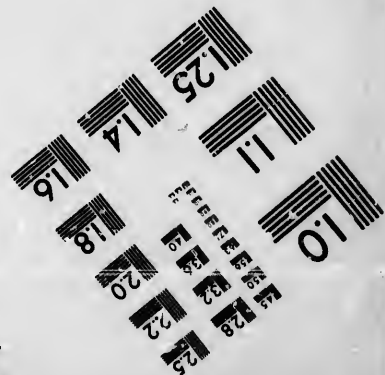
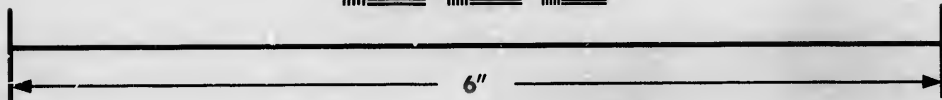
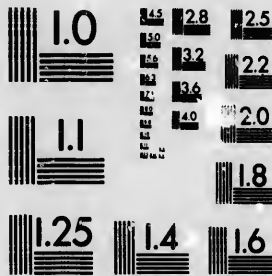


**IMAGE EVALUATION
TEST TARGET (MT-3)**



**Photographic
Sciences
Corporation**

23 WEST MAIN STREET
WEBSTER, N.Y. 14580
(716) 872-4503

1.8
2.0
2.2
2.5
2.8
3.2
3.6
4.0

**CIHM/ICMH
Microfiche
Series.**

**CIHM/ICMH
Collection de
microfiches.**



Canadian Institute for Historical Microreproductions / Institut canadien de microreproductions historiques

10
11
12
13
14

© 1986

The copy filmed here has been reproduced thanks to the generosity of:

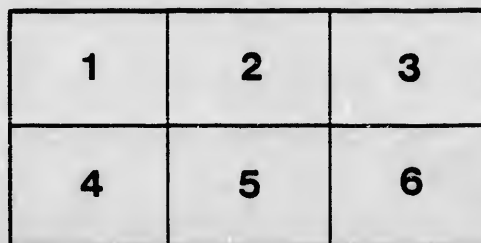
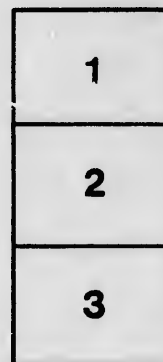
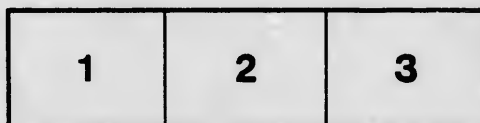
D. B. Weldon Library
University of Western Ontario
(Regional History Room)

The images appearing here are the best quality possible considering the condition and legibility of the original copy and in keeping with the filming contract specifications.

Original copies in printed paper covers are filmed beginning with the front cover and ending on the last page with a printed or illustrated impression, or the back cover when appropriate. All other original copies are filmed beginning on the first page with a printed or illustrated impression, and ending on the last page with a printed or illustrated impression.

The last recorded frame on each microfiche shall contain the symbol \rightarrow (meaning "CONTINUED"), or the symbol ∇ (meaning "END"), whichever applies.

Maps, plates, charts, etc., may be filmed at different reduction ratios. Those too large to be entirely included in one exposure are filmed beginning in the upper left hand corner, left to right and top to bottom, as many frames as required. The following diagrams illustrate the method:



L'exemplaire filmé fut reproduit grâce à la générosité de:


D. B. Weldon Library
University of Western Ontario
(Regional History Room)

Les images suivantes ont été reproduites avec le plus grand soin, compte tenu de la condition et de la netteté de l'exemplaire filmé, et en conformité avec les conditions du contrat de filmage.

Les exemplaires originaux dont la couverture en papier est imprimée sont filmés en commençant par le premier plat et en terminant soit par la dernière page qui comporte une empreinte d'impression ou d'illustration, soit par le second plat, selon le cas. Tous les autres exemplaires originaux sont filmés en commençant par la première page qui comporte une empreinte d'impression ou d'illustration et en terminant par la dernière page qui comporte une telle empreinte.

Un des symboles suivants apparaîtra sur la dernière image de chaque microfiche, selon le cas: le symbole \rightarrow signifie "A SUIVRE", le symbole ∇ signifie "FIN".

Les cartes, planches, tableaux, etc., peuvent être filmés à des taux de réduction différents. Lorsque le document est trop grand pour être reproduit en un seul cliché, il est filmé à partir de l'angle supérieur gauche, de gauche à droite, et de haut en bas, en prenant le nombre d'images nécessaire. Les diagrammes suivants illustrent la méthode.

The Annual Institute
FOR
The Teachers of
Ripissing District

WILL BE HELD IN THE
TRAINING SCHOOL,
MATTAWA,

ON
THURSDAY & FRIDAY, OCTOBER 17-18, 1895.

W. J. Mills,
President,

E. Jones,
Secretary

Mattawa Tribune Print,

Programme.



Thursday, October 17th, 1895.

MORNING SESSION.

10—10.30 A.M.

1—Reading Minutes. President's Address etc.

10.30—11.30 A.M

2—Elementary Reading Mr. J. Dearness, I.P.S.
London.

11.30—12 M.

3—Contagion M. James, M.D.

AFTERNOON SESSION.

2—2.30

4—The Teacher and his Work . . Mr. W. J. Mill B.A.

2.30—3.30.

5—Education from Observation. Mr. J. Dearness I.P.S

3.30—4.

6—Selected Mr. H. J. Bolitho.

4—4.30.

7—Address Rev. E. McNab.

4.30—5.

8—Election of officers etc.

EVENING SESSION.

At the Evening Session, Mr. Dearness will give an Address on "The Relation of the ~~Home~~ *Home* to the School."

The Public are specially invited to be present at this session.

Friday, October 18th, 1895.

MORNING SESSION.

9—9.30.

1—Reading Rev. George Grant B.A.

9.30—10.

2—School Hygiene M. J. Dearness I.P.S.

10—10.30.

3—History and Geography Mr. J. M. Deacon.

10.30—11.30.

4—Composition Mr. J. Dearness I.P.S.

11.30—12.

5—The Relation of Education to Character....., Rev. P. A. Jourdan.





Afternoon Session.

2—2.30.

6—Our Educational Defects. Mr. E. Jones.

2.30—3.30.

7—Busy Work Mr. J. Dearness, I.P.S.

3.30—4.

8--Question Drawer.

NOTES.

Music will be provided at all Sessions of the Institute.

Teachers will hand in matter for the Question Drawer, not later than Thursday evening. Question should all have a bearing upon the professional work of Teaching.

All the teachers in the District are urgently requested to be present and to come prepared to take part in the discussion of some subject.



