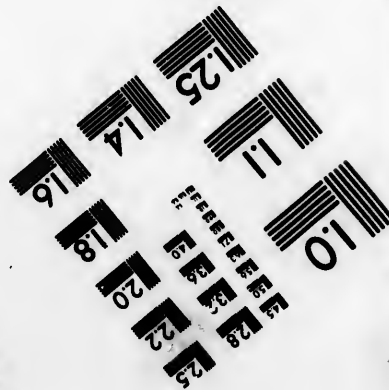
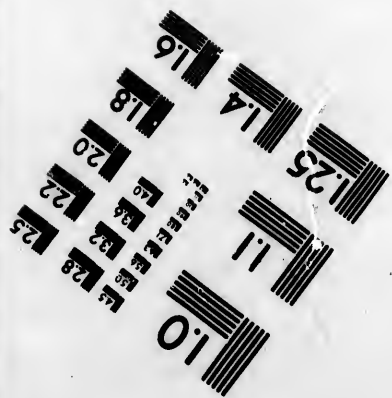
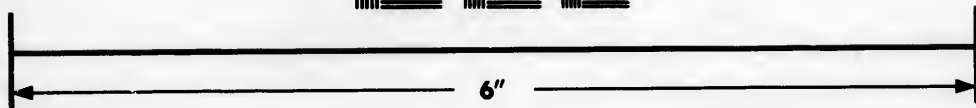
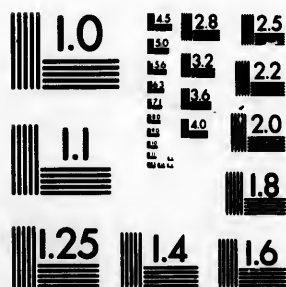


**IMAGE EVALUATION  
TEST TARGET (MT-3)**



**Photographic  
Sciences  
Corporation**

23 WEST MAIN STREET  
WEBSTER, N.Y. 14580  
(716) 872-4503

**CIHM/ICMH  
Microfiche  
Series.**

**CIHM/ICMH  
Collection de  
microfiches.**



**Canadian Institute for Historical Microreproductions / Institut canadien de microreproductions historiques**

**© 1983**

Technical and Bibliographic Notes/Notes techniques et bibliographiques

The Institute has attempted to obtain the best original copy available for filming. Features of this copy which may be bibliographically unique, which may alter any of the images in the reproduction, or which may significantly change the usual method of filming, are checked below.

L'Institut a microfilmé le meilleur exemplaire qu'il lui a été possible de se procurer. Les détails de cet exemplaire qui sont peut-être uniques du point de vue bibliographique, qui peuvent modifier une image reproduite, ou qui peuvent exiger une modification dans la méthode normale de filmage sont indiqués ci-dessous.

Coloured covers/  
Couverture de couleur

Covers damaged/  
Couverture endommagée

Covers restored and/or laminated/  
Couverture restaurée et/ou pelliculée

Cover title missing/  
Le titre de couverture manque

Coloured maps/  
Cartes géographiques en couleur

Coloured ink (i.e. other than blue or black)/  
Encre de couleur (i.e. autre que bleue ou noire)

Coloured plates and/or illustrations/  
Planches et/ou illustrations en couleur

Bound with other material/  
Relié avec d'autres documents

Tight binding may cause shadows or distortion along interior margin/  
La reliure serrée peut causer de l'ombre ou de la distortion le long de la marge intérieure

Blank leaves added during restoration may appear within the text. Whenever possible, these have been omitted from filming/  
Il se peut que certaines pages blanches ajoutées lors d'une restauration apparaissent dans le texte, mais, lorsque cela était possible, ces pages n'ont pas été filmées.

Additional comments:/  
Commentaires supplémentaires:

Coloured pages/  
Pages de couleur

Pages damaged/  
Pages endommagées

Pages restored and/or laminated/  
Pages restaurées et/ou pelliculées

Pages discoloured, stained or foxed/  
Pages décolorées, tachetées ou piquées

Pages detached/  
Pages détachées

Showthrough/  
Transparence

Quality of print varies/  
Qualité inégale de l'impression

Includes supplementary material/  
Comprend du matériel supplémentaire

Only edition available/  
Seule édition disponible

Pages wholly or partially obscured by errata slips, tissues, etc., have been refilmed to ensure the best possible image/  
Les pages totalement ou partiellement obscurcies par un feuillet d'errata, une pelure, etc., ont été filmées à nouveau de façon à obtenir la meilleure image possible.

This item is filmed at the reduction ratio checked below/  
Ce document est filmé au taux de réduction indiqué ci-dessous.

10X	12X	14X	16X	18X	20X	22X	24X	26X	28X	30X	32X
<input type="checkbox"/>	<input type="checkbox"/>	<input type="checkbox"/>	<input type="checkbox"/>	<input type="checkbox"/>	<input type="checkbox"/>	<input type="checkbox"/>	<input checked="" type="checkbox"/>	<input type="checkbox"/>	<input type="checkbox"/>	<input type="checkbox"/>	<input type="checkbox"/>

The copy filmed here has been reproduced thanks to the generosity of:

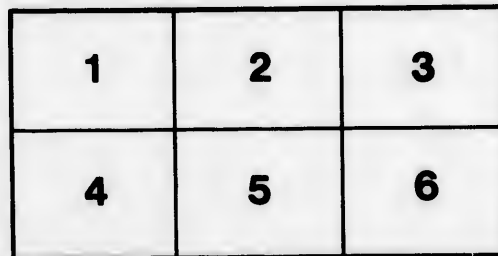
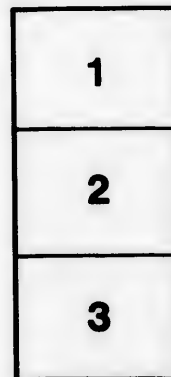
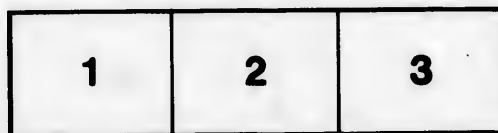
Library of Congress  
Photoduplication Service

The images appearing here are the best quality possible considering the condition and legibility of the original copy and in keeping with the filming contract specifications.

Original copies in printed paper covers are filmed beginning with the front cover and ending on the last page with a printed or illustrated impression, or the back cover when appropriate. All other original copies are filmed beginning on the first page with a printed or illustrated impression, and ending on the last page with a printed or illustrated impression.

The last recorded frame on each microfiche shall contain the symbol  $\rightarrow$  (meaning "CONTINUED"), or the symbol  $\nabla$  (meaning "END"), whichever applies.

Maps, plates, charts, etc., may be filmed at different reduction ratios. Those too large to be entirely included in one exposure are filmed beginning in the upper left hand corner, left to right and top to bottom, as many frames as required. The following diagrams illustrate the method:



L'exemplaire filmé fut reproduit grâce à la générosité de:

Library of Congress  
Photoduplication Service

Les images suivantes ont été reproduites avec le plus grand soin, compte tenu de la condition et de la netteté de l'exemplaire filmé, et en conformité avec les conditions du contrat de filmage.

Les exemplaires originaux dont la couverture en papier est imprimée sont filmés en commençant par le premier plat et en terminant soit par la dernière page qui comporte une empreinte d'impression ou d'illustration, soit par le second plat, selon le cas. Tous les autres exemplaires originaux sont filmés en commençant par la première page qui comporte une empreinte d'impression ou d'illustration et en terminant par la dernière page qui comporte une telle empreinte.

Un des symboles suivants apparaîtra sur la dernière image de chaque microfiche, selon le cas: le symbole  $\rightarrow$  signifie "A SUIVRE", le symbole  $\nabla$  signifie "FIN".

Les cartes, planches, tableaux, etc., peuvent être filmés à des taux de réduction différents. Lorsque le document est trop grand pour être reproduit en un seul cliché, il est filmé à partir de l'angle supérieur gauche, de gauche à droite, et de haut en bas, en prenant le nombre d'images nécessaire. Les diagrammes suivants illustrent la méthode.

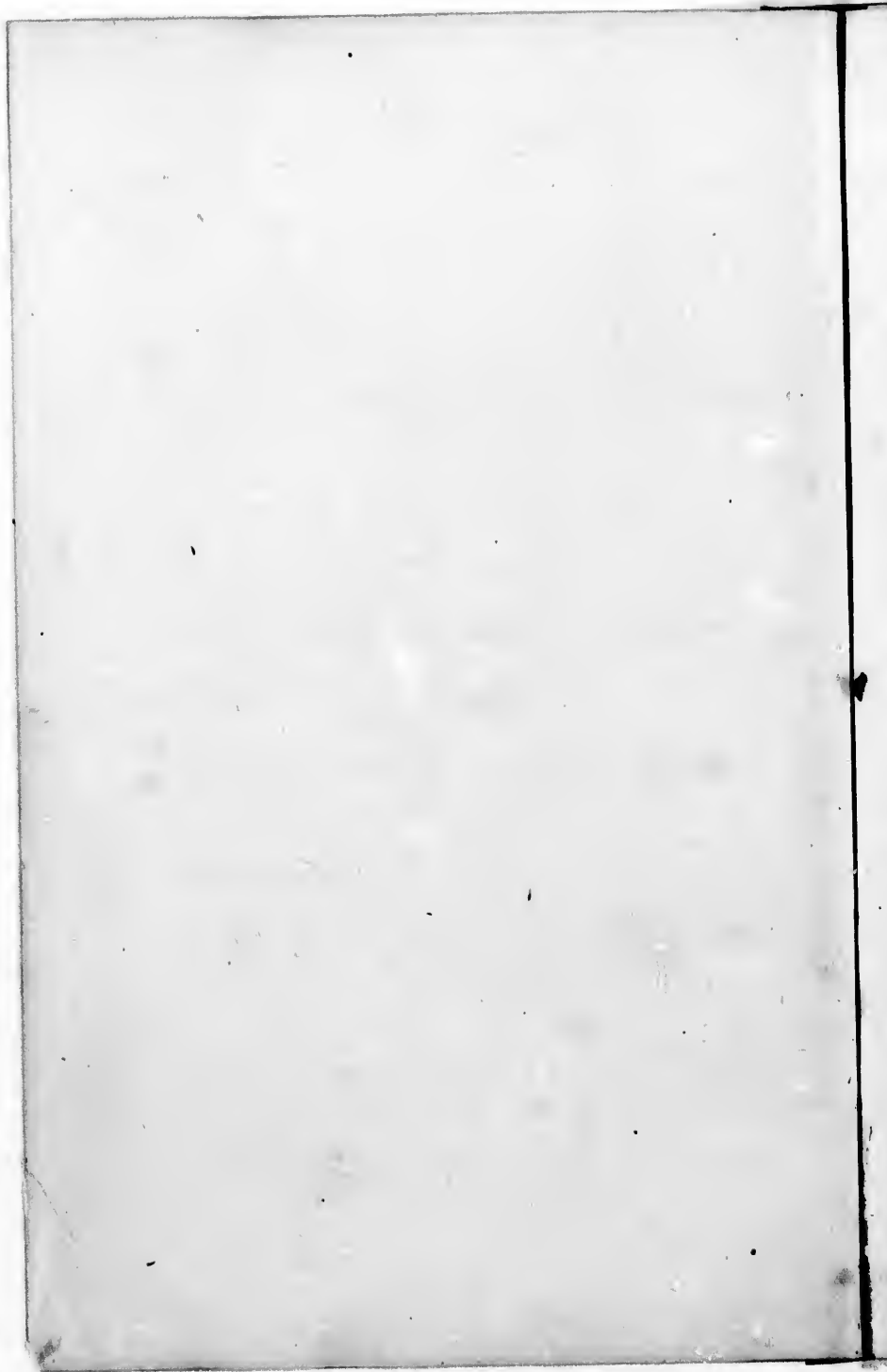
aills  
du  
diflier  
une  
nage

rrata  
to

pelure,  
n à



32X



---

CATALOGUE

OF

Official Reports upon Geological Surveys

OF THE

UNITED STATES AND BRITISH PROVINCES.

*Orthoniel Charles Marsh*

---



*Copy 3*

Z 6034

.C19M4

50/5000/0.5/0.5/0.5

[FROM THE AMERICAN JOURN. OF SCIENCE AND ARTS, VOL. XLIII, JAN., 1867.]

A CATALOGUE  
OF  
OFFICIAL REPORTS UPON GEOLOGICAL SURVEYS  
OF THE  
UNITED STATES AND BRITISH PROVINCES.

PART I.

IN arranging a set of American Geological Reports in the Library of Yale College, the following catalogue became necessary; and it is here published in the hope that it may be of service to geologists.\*

PART I.—STATES EAST OF THE MISSISSIPPI RIVER.

MAINE.

1837. *Chas. T. Jackson*, 1st Ann. Rep., Augusta, 12mo, 128 pp. Atlas, 24 pl. 4437  
1838. *C. T. Jackson*, 2d Ann. Rep., Augusta, 12mo, 168 pp. \*  
1839. " 3d " " 276 and lxiv pp. \*  
1837. " 1st " Geol. of Public Lands, Maine and Mass., Boston, 12mo, 47 pp.  
1838. *C. T. Jackson*, 2d Ann. Rep., Geol. of Public Lands, Maine and Mass., Boston, 12mo, 93 pp. \*  
1839. *Ezekiel Holmes*, Explor. and Survey of Aroostook River Territory, Augusta, 12mo, 78 pp.  
1862. *E. Holmes* and *Chas. H. Hitchcock*, 1st Ann. Rep., Nat. Hist. and Geol., Augusta, 8vo, 387 pp.  
1863. *E. Holmes* and *C. H. Hitchcock*, 2nd Ann. Rep., Nat. Hist. and Geol., Augusta, 8vo, 447 pp.

NEW HAMPSHIRE.

1841. *C. T. Jackson*, 1st Ann. Rep., Concord, 12mo, 164 pp. 1570  
1842. " 2d " " " 8 pp. \*  
1844. *C. T. Jackson*, Final Rep., Concord, 4to, 379 pp., map, 2 sections. 1572  
1845. " Views and Map, illustrating Scenery and Geology, Boston, 4to, 20 pp., 8 pl.

\* Of those Reports marked with an \* one copy is needed at the Library of Yale College; and also one copy of any Report not included in the list: persons having them to dispose of are requested to notify the Librarian.



## VERMONT.

- 4437  
 1845. *Chas. B. Adams*, 1st Ann. Rep., Burlington, 8vo, 92 pp.  
 1846. " 2d " " " 267 pp.  
 1847. " 3d " " " 32 pp.  
 1848. " 4th " " " 8 pp.  
 1856. *Augustus Young*, Prelim. Rep. on Nat. Hist., Burlington, 12mo, 88 pp.  
 1857. *E. Hitchcock*, 1st Ann. Rep., Montpelier, 12mo, 12 pp.  
 1858. " 2d " Burlington, 12mo, 13 pp.  
 1861. *Edward Hitchcock, E. Hitchcock, Jr., A. D. Huger, and Chas. H. Hitchcock*, Final Rep., Proctorsville, 4to, 2 parts, 988 pp., 38 pl.

## MASSACHUSETTS.

- 4425  
 1832. *E. Hitchcock*, Final Report (1st Part), Economic Geology, Amherst, 8vo, 71 pp., map.  
 1833. *E. Hitchcock*, Final Report (complete), Amherst, 8vo, 700 pp., Atlas, 19 pl., map.  
 1835. *E. Hitchcock*, Final Report (2d edition), Amherst, 12mo, 702 pp., Atlas, 19 pl., map.  
 1838. *E. Hitchcock*, Rep. on Reëxamination Economic Geol., Boston, 12mo, 139 pp.  
 1841. *E. Hitchcock*, Final Rep., Amherst, 4to, 831 pp., map and 55 pl.  
 1853. " Rep. on Surface Geology, Boston, 8vo, 44 pp.  
 1858. " " Conn. River Sandstone (Ichnology of New England), Boston, 4to, xii and 220 pp., 60 pl.  
 1865. *E. Hitchcock*, Supplement to Ichnology of New England, Boston, 4to, x and 96 pp., 20 pl.

## RHODE ISLAND.

- 4432  
 1840. *Chas. T. Jackson*, Final Rep., Providence, 8vo, 312 pp., map, section.

## CONNECTICUT.

- 4423  
 1837. *Chas. U. Shepard* (Mineralogy and Economic Geol.), New Haven, 8vo, 188 pp.  
 1842. *Jas. G. Percival*, Final Report, New Haven, 8vo, 495 pp., map.

## NEW YORK.

- 4436 + window (west end)  
 1836. *John A. Dix*, Rep. on proposed Survey, Albany, 8vo, 60 pp.  
 1837. *John Torrey, James E. DeKay, Lewis C. Beck, Wm. W. Mather, Ebenezer Emmons, Timothy A. Conrad, and Lardner Vanuzem*, 1st Ann. Rep., Albany, 8vo, 212 pp.  
 1838. *J. E. DeKay, L. C. Beck, T. A. Conrad, W. W. Mather, E. Emmons, L. Vanuzem, and Jas. Hall*, 2nd Ann. Rep., Albany, 8vo, 384 pp.  
 1839. *L. C. Beck, T. A. Conrad, W. W. Mather, E. Emmons, L. Vanuzem, and J. Hall*, 3d Ann. Rep., Albany, 8vo, 351 pp.  
 1840. *J. E. DeKay, L. C. Beck, J. Torrey, T. A. Conrad, W. W. Mather, E. Emmons, L. Vanuzem, and J. Hall*, 4th Ann. Rep., Albany, 8vo, 484 pp.  
 1841. *L. C. Beck, T. A. Conrad, W. W. Mather, E. Emmons, L. Vanuzem, and J. Hall*, 5th Ann. Rep., Albany, 8vo, 184 pp.

1842. *L. C. Beck*, Final Rep. Mineralogy, Albany, 4to, 538 pp., 8 pl.  
 1843. *W. W. Mather*, Final Rep. 1st Dist., Albany, 4to, 653 pp., 46 pl.  
 1842. *E. Emmons*, Final Rep., 2d Dist., Albany, 4to, 427 pp., 17 pl.  
 " *L. Vanuzem*, Final Rep., 3d Dist., Albany, 4to, 306 pp.  
 1843. *J. Hall*, " " 4th " " 4to, 525 pp., 19 pl.  
 1847. " " " Paleontology, Vol. I, Albany, 4to, 338 pp., 100 pl.  
 1852. *J. Hall*, Final Rep., Paleontology, Vol. II, Albany, 4to, 362 pp., 104 pl.  
 1850. *J. Hall*, Final Rep., Paleontology, Vol. III, Albany, 4to, 532 pp., 140 pl.  
 1846. *E. Emmons*, Final Rep., Agriculture, Albany, 4to, 371 pp., 21 pl., map. (Contains Emmons's "Taconic System.")  
 1850. *J. Hall*, 3d Reg. Rep., Appendix L, Contrib. to Paleontology, Albany, 8vo, 13 pp., 3 pl.  
 1857. *J. Hall*, 10th Reg. Rep., Appendix C, Contrib. to Paleontology, Albany, 8vo, 148 pp.  
 1859. *J. Hall*, 12th Reg. Rep., Appendix — Contrib. to Paleontology, Albany, 8vo, 90 pp.  
 1860. *J. Hall*, 13th Reg. Rep., Appendix F, Contrib. to Paleontology, Albany, 8vo, 76 pp.  
 1861. *L. Lincklaen*, 14th Reg. Rep., Appendix B, Guide to Geology N. Y., Albany, 8vo, 68 pp., 19 pl.  
 1861. *J. Hall*, 14th Reg. Rep., Appendix C, Contrib. to Paleontology, Albany, 8vo, 22 pp.  
 1862. *J. Hall*, 15th Reg. Rep., Appendix —, Contrib. to Paleontology, Albany, 8vo, 170 pp.  
 1863. *J. Hall*, 16th Reg. Rep., Appendix D, Contrib. to Paleontology, Albany, 8vo, 210 pp., 11 pl.  
 1864. *J. Hall*, 17th Reg. Rep., Appendix H, Albany, 8vo, 11 pp.  
 1866. " 18th " " " " " " " " " " " "

## NEW JERSEY.

1836. *Henry D. Rogers*, 1st Rep., Philadelphia, 8vo, 188 pp., map.  
 1840.\* " Final Rep. (Descr. Geol. N. J.), Philadelphia, 8vo, 301 pp., map. (Reprinted without map, Trenton, 1865.)  
 1855. *Wm. Kittell*, 1st Ann. Rep., New Brunswick, 8vo, 100 pp.  
 1856. " 2d, " Trenton, 8vo, 248 pp.  
 1857. " 3d, " " 79 pp.  
 1857. *Geo. H. Cook*, Rep. on Cape May Co., Trenton, 8vo, 211 pp., map.  
 1864. " 1st Ann. Rep., Trenton, 8vo, 13 pp.  
 1865. " 2d " " 24 pp., map, section.

## PENNSYLVANIA.

1836. *H. D. Rogers*, 1st Ann. Rep., Harrisburg, 8vo, 22 pp.  
 1838. " 2d " " " 91 pp.  
 1839. " 3d " " " 119 pp.  
 1840. " 4th " " " 252 pp.  
 1841. " 5th " " " 179 pp.  
 1842. " 6th " " " 28 pp.

- 1856. *H. D. Rogers*, Final Rep., Vol. I, Philadelphia, [printed at Edinburgh.] 4to, xxvii and 586 pp., 27 pl., 8 sect.
- 1856. *H. D. Rogers*, Final Rep., Vol. II, Philadelphia, [printed at Edinburgh.] 4to, xxiv and 1045 pp., 45 pl., 7 sect.
- 1858. *H. D. Rogers*, Final Rep., Atlas, Philadelphia, [printed at Edinburgh.] 4to, 2 maps (5 sheets), 2 sections.

## DELAWARE.

- 1839.\* *Jas. C. Booth*, 1st and 2nd Ann. Rep., Dover, 8vo, 25 pp.
- 1841. " Final Rep., Dover, 8vo, 188 pp.

## MARYLAND.

- 1834. *J. T. Ducatel* and *J. H. Alexander*, Rep. on Projected Survey, Annapolis, 8vo, 39 pp., map.
- 1834. *J. H. Alexander*, Rep. on New Map, Annapolis, 8vo, 12 pp., map.
- 1835.\* " Rep. Annapolis, 8vo, 34 pp.
- 1837. " Rep. " 8vo, 44 pp.
- 1834. *J. T. Ducatel*, 1st Ann. Rep., Annapolis, 8vo, 44 pp.
- 1835.\* " 2d Ann. Rep., " 8vo, 60 pp. Map and sect'ns.
- 1836. " 3d Ann. Rep., " 8vo, 60 pp. Map and sect'ns.
- 1837. " 4th Ann. Rep., Annapolis, 8vo, 60 pp.
- 1838. " 5th " " 8vo, 33 pp., 4 pl.
- 1839.\* " 6th " " 8vo, 40 pp.
- 1840. " 7th " " 8vo, 59 pp. 3 pl.
- 1860. *Philip T. Tyson*, 1st Bienn. Rep., Annapolis, 8vo, 145 and 20 pp., map.
- 1862. *P. T. Tyson*, 2d Bienn. Rep., Annapolis, 8vo, 92 pp.

## VIRGINIA.

- 1836. *Wm. B. Rogers*, Rep. Geol. Recon., Philadelphia, 8vo, 143 pp., section.
- 1838. *W. B. Rogers*, 1st and 2d Ann. Reps., Philad., 8vo, 87 pp.
- 1839. " 3d Ann. Rep., Philad., 4to, 52 pp.
- 1840. " 4th " Richmond, 8vo, 161 pp.
- 1841. " 5th " " 132 pp.

## NORTH CAROLINA.

- 1824. *Denison Olmsted*, 1st Ann. Rep., "Part I," —, 12mo, 84 pp.
- 1852. *E. Emmons*, " " Raleigh, 12mo, 181 pp.
- 1856. " Rep. on Midland Counties, New York and Raleigh, 8vo, 351 pp., 15 pl.
- 1858.\* *E. Emmons*, Rep. Agric. Eastern Counties, New York and Raleigh, 8vo, 314 pp.
- 1867. *W. C. Kerr*, Rep. Progress of Survey, Raleigh, 8vo, 56 pp.

## SOUTH CAROLINA.

- 1826.\* *L. Vanuxem*, Rep. published in newspapers, and most of it in Mills' Statistics of S. C.
- 1843.\* *Edmund Ruffin*, Agricultural Rep., with Appendix, Columbia, 8vo, 176 pp.

1844. *M. Tuomey*, 1st Ann. Rep., Columbia, 12mo, 63 pp. (including Suppl. to Ruffin's Rep.)  
 1848. *M. Tuomey*, Final Rep., Columbia, small 4to, 293 and lvi pp., map.  
 1857. *Oscar M. Lieber*, 1st Ann. Rep., Columbia, 8vo, 136 pp., 9 pl.  
 1858. " 2d " " 8vo, 143 " 5 "  
 1859. " 3d " " 8vo, 223 " 3 "  
 1860.\* " 4th " " 8vo, 194 " 4 "

## ALABAMA.

- \* 1850. *M. Tuomey*, 1st Biennial Rep., Tuscaloosa, 8vo, xxxii and 176 pp.  
 1853.\* " map. ———  
 1858. " 2d Biennial Rep., Montgomery, 8vo, xix and 292 pp., map (edited by J. W. Mallet).

## MISSISSIPPI.

- \* 1854. *B. L. C. Wailes*, 1st Rep., Jackson, 8vo, 371 pp.  
 1857. *L. Harper*, Prelim. Rep., Jackson, 8vo, 350 pp., 7 pl., map.  
 1858.\* *Eug. W. Hilgard*, Ann. Rep., Geol. and Agric., Jackson, 12mo, 22 pp.  
 ✓ 1860. *E. W. Hilgard*, Rep. Geol. and Agric., Jackson, 8vo, 391 pp., map.

## TENNESSEE.

1835. *G. Troost*, 3d Rep., Nashville, 12mo, 32 pp., map.  
 1837. " 4th " " " 37 pp. "  
 1840. " 5th " " 8vo, 75 pp. "  
 1841.\* " 6th " " 12mo, 48 pp. "  
 1844.\* " 7th " " 8vo, 45 pp. "  
 1845.\* " 8th " " 12mo, 40 pp. "  
 1848. " 9th " " " 39 pp., 2 pl.  
 [Troost's 1st and 2d Reports were not published.]  
 1856. *Jas. M. Safford*, 1st Biennial Rep., Nashville, 8vo, 164 pp., map.  
 1857. " 2d " " " 11 pp.  
 1857. " 3d " " " 9 "

## KENTUCKY.

- \* 1839. *W. W. Mather*, Rep. of Geol. Recon. (1838), Frankfort, 8vo, 40 pp.  
 1856. *David D. Owen*, 1st Rep., Frankfort, 8vo, 416 pp., 7 pl., 2 maps, 7 sections.  
 1857. *D. D. Owen*, 2d Rep., Frankfort, 8vo, 391 pp., Atlas of 10 pl., and 1 chart.  
 1857. *D. D. Owen*, 3d Rep., Frankfort, 8vo, 589 pp., Atlas of 10 pl., and 1 chart.  
 1861. *D. D. Owen*, 4th Rep., Frankfort, 8vo, 616 pp.

## OHIO.

1836. *S. P. Hildreth*, Legislative Rep. on Survey, Columbus, 12mo, 18 pp., 2 sections.  
 1837. *John L. Riddell*, Legislat. Rep. on Survey, Columbus, 8vo, 34 pp.  
 1838. *W. W. Mather*, 1st Ann. Rep., Columbus, 8vo, 134 pp.  
 " " 2d " " 8vo, 286 "

## INDIANA.

1838. *D. D. Owen*, 1st Rep., Indianapolis, 8vo, 34 pp.  
 1839. " 2d " " " 54 "  
 1855.\* *R. T. Brown*, Letter to Agric. Board, Indianapolis, 8vo, 30 pp.  
 1862. *D. D. Owen and Richard Owen*, Rep. Geol. Recon., Indianapolis, 8vo, xvi and 368 pp., 11 pl.

## ILLINOIS.

1853. *J. G. Norwood*, Rep. Prog., Springfield, 8vo, 18 pp.  
 1857. " " on Coals, Chicago, " 98 "  
 1866. *A. H. Worthen*, Rep. Geology, Vol. I, Springfield, large 8vo, 504 pp., with map and sections.  
 " *A. H. Worthen*, Rep. Palaeontology, Vol. II, Springfield, large 8vo, 474 pp. 50 plates. (Vertebrates by J. S. Newberry and A. H. Worthen; Invertebrates by F. B. Meek and A. H. Worthen; and Plants by Leo Lesquereux.)

## MICHIGAN.

1838. *Douglass Houghton*, 1st Rep., Detroit, small 8vo, 37 pp.  
 1839. " 2d " " " 89 and 123 pp.  
 1840.\* " " on Salt Springs, (House Doc. Vol. I, p. 18.)  
 " " 3d Ann. Rep., Detroit, 8vo, 124 pp.  
 1841. " 4th " " 184 "  
 " \* " Rep. Progress of Maps, —  
 1842.\* " 5th Ann. Rep., —  
 1861. *A. Winchell*, 1st Biennial Rep., Lansing, 12mo, 339 pp.  
 1846. *A. B. Gray*, Rep. to War Dept. on Mineral Lands, Lake Superior, Washington, 8vo, 23 pp., map.  
 1849. *Chas. T. Jackson*, Rep. (U. S.) on Mineral Lands, Washington, 8vo, 237 pp., 6 maps.  
 1849. *J. W. Foster and J. D. Whitney*, Rep. (U. S.) on Mineral Lands, Washington, 8vo, 330 pp., 9 maps, 7 pl.  
 1849. *Wm. A. Burt*, Rep. (U. S.) Mineral lands L. Superior, Washington, 8vo, 63 pp.  
 " *Bela Hubbard*, Rep. (U. S.) Mineral lands L. Superior, Washington, 8vo, 76 pp.  
 1850. *J. W. Foster and J. D. Whitney*, Rep. (U. S.) Geol. L. Superior Land Dist., Part I, Washington, 8vo, 224 pp., 4 maps, 12 pl.  
 1851. *J. W. Foster and J. D. Whitney*, Rep. (U. S.) Geol. L. Superior Land Dist., Part II, Washington, 8vo, xvi and 406 pp., 35 pl.

## WISCONSIN.

1854. *Edward Daniels*, 1st Ann. Rep., Madison, 12mo, 84 pp.  
 1855. *J. G. Percival*, " " " " 101 " map.  
 1856. " 2d " " " 111 "  
 1858. *Edward Daniels*, " " " " 62 "  
 " " and others, " " " " 12 "  
 1860.\* *J. Hall*, Ann. Rep. (for 1859), Madison, —  
 1861. " " Madison, 12mo, 52 pp.  
 1862. *J. Hall and J. D. Whitney*, Final Rep., Vol. I, Albany, 8vo, 455 pp., 10 pl., 2 maps.

[FROM THE AMERICAN JOURN. OF SCIENCE AND ARTS, VOL. XLIII, MAY, 1867.]

PART II.

STATES AND TERRITORIES WEST OF THE MISSISSIPPI RIVER, AND  
BRITISH PROVINCES.

MINNESOTA.

1866. *Henry H. Eames*, 1st Ann. Rep., Saint Paul, 8vo, 23 pp.  
" *Charles Whittlesey*, Rep. on Mineral Regions, Cleveland, 8vo, 64 pp.

IOWA.

1858. *J. Hall* and *J. D. Whitney*, Final Rep., vol. I, Albany, 8vo, 724  
pp., 29 pl., 2 sect., map.  
1859. *J. Hall* and *J. D. Whitney*, Suppl., vol. I, Albany, 8vo, 4 pp.  
1860. " " " 8vo, 94 pp., 3 plates.  
1860. " " Ann. Rep., Des Moines, 8vo, 75 pp.  
1861.\* *J. Hall*, Prelim. Notice of New Crinoidea, Albany, 8vo, 18 pp.  
1867. *C. A. White*, 1st Ann. Rep., Des Moines, 8vo, 4 pp.

IOWA, WISCONSIN AND ILLINOIS.

- 1844. *D. D. Owen*, Rep. to Treas. Dept., Washington, 8vo, 191 pp.,  
16 pl., 4 maps.

WISCONSIN AND IOWA.

- 1848. *D. D. Owen*, Rep. on Chippewa Land Dist., Washington, 8vo,  
134 pp., 23 pl., 14 sect., maps.

WISCONSIN, IOWA AND MINNESOTA.

- 1852. *D. D. Owen*, Final Rep. (U. S.), Philadelphia, 4to, 638 pp.,  
27 pl., 16 sect., map.

MISSOURI.

- 1855. *G. C. Swallow*, 1st and 2d Ann. Rep., Jefferson City, 8vo, 207,  
and 238 pp., 32 pl., 5 maps.  
1857.\* *G. C. Swallow*, 3d Ann. Rep., " " " " " "  
1859.\* " 4th " " " " " "  
1861.\* " 5th " " " " " "  
" " Geol. Rep. on S. W. Branch Pacific R. R., St.  
Louis, 8vo, 93 pp., map.

KANSAS.

1866. *Benj. F. Mudge*, 1st Ann. Rep., Lawrence, 8vo, 56 pp.  
" *G. C. Swallow*, Prelim. Rep., Lawrence, 8vo, 198 pp.

ARKANSAS.

- 1858. *D. D. Owen*, 1st Rep., Little Rock, 8vo, 256 pp.  
1860. " 2d " Philadelphia, 8vo, 493 pp.

1865 Miami Co

## LOUISIANA.

1853. *Randolph B. Marcy*, Rep. to War Dept. on Red River of La., (Geology by E. Hitchcock and G. G. Shumard; Paleontology, by B. F. Shumard,) 8vo, 320 pp., 66 sect. and plates.

## TEXAS.

1859. *B. F. Shumard*, 1st Ann. Rep., Austin, 12mo, 17 pp.

## ROCKY MOUNTAIN REGION.

1809. *M. Lewis* and *W. Clark*, Expedition across American Continent in 1804-6, by order United States Government, Philadelphia, 8vo, 2 vols. (London, 4to, 1814, and 8vo, 3 vols. 1817), inaps.
- 1810.\* *Z. M. Pike*, Expedition in western Territories in 1805-7, by order U. S. Government, Philadelphia, 8vo; maps, (London, 4to, 1811).
- 1823.\* *Stephen H. Long*, Expedition from Pittsburg to Rocky Mts., in 1819-20, (War Dept.) (Compiled by Edwin James,) Philadelphia, 8vo, 2 vols. 503, and 442 pp. Atlas, (London, 8vo, 3 vols. 1823).
- 1824.\* *S. H. Long*, Exped. to source of St. Peters River, in 1823, (War Dept.) (Geology by Wm. H. Keating,) Philadelphia, 8vo, 2 vols., maps, (London, 8vo, 2 vols. 1825).
- 1835. *G. W. Featherstonhaugh*, Rep. on Elevated Country between Missouri and Red Rivers, Washington, 12mo, 97 pp.
- 1836. *G. W. Featherstonhaugh*, Rep. on Geol. Recon., via Wisconsin, to Coteau de Prairie, Washington, 12mo, 168 pp.
1843. *I. N. Nicollet*, Rep. to illustrate Map of Hydrographical Basin of Mississippi River, Washington, 8vo, 170 pp.
1845. *John C. Fremont*, Exped. to Rocky Mts. in 1842-4, (War Dept.), (Paleontology by James Hall), Washington, 8vo, 693 pp.
1848. *W. H. Emory*, Exped. from Fort Leavenworth to California, (War Dept.), includes Reports of J. W. Albert, P. S. Cooke, and A. R. Johnson, (Paleontology by J. W. Bailey), Washington, 8vo, 614 pp., maps.
- “ *A. Wislizenus*, Rep. of tour to North Mexico in 1843-7, with Col. Doniphan's Expd., Washington, 8vo, 141 pp., maps.
1852. *Howard Stansbury*, Exped. to Great Salt Lake, (War Dept.), (Geology and Paleontology by James Hall,) Washington and Philadelphia, 8vo, 487 pp., maps.
1853. *L. Sitgreaves*, Exped. down Zuni and Colorado Rivers, (War Dept.), Washington, 8vo.
1856. *G. K. Warren*, Exped. to Rocky Mts. in 1855, (Geology by F. V. Hayden), Washington, 8vo.
1857. *W. H. Emory*, Rep. on U. S. and Mexican Boundary Survey, vol. I, (Geology by C. C. Parry, A. Schott, W. H. Emory, and James Hall; Paleontology by James Hall and T. A. Conrad), Washington, 4to, 21 plates.
1859. *W. H. Emory*, Rep. on U. S. and Mex. Boundary, vol. II, Botany and Zoology; no Geology, Washington, 4to, plates.
1855. *Rep. on Pacific Railroad Exploration*, (War Dept.), vol. I, (Geology by George Gibbs), Washington, 4to.



1855. *Rep. on Pacific R. R. Explor.*, (War Dept.), vol. II, (Geology by James Schiel and Wm. P. Blake; Paleontology by J. Schiel, J. W. Bailey, and W. P. Blake), Washington, 4to, plates.
1856. *Rep. on Pacific R. R. Explor.*, (War Dept.), vol. III, (Geology, by W. P. Blake, and Jules Marcou; Paleontology by James Hall), Washington, 4to, plates.
- " *Rep. on Pacific R. R. Explor.*, (War Dept.), vol. IV, Botany; no Geology, Washington, 4to, plates.
- " *Rep. on Pacific R. R. Explor.*, (War Dept.), vol. V, (Geology by W. P. Blake; Paleontology by L. Agassiz, T. A. Conrad, J. W. Bailey, and Geo. C. Schäffer), Washington, 4to, plates.
1857. *Rep. on Pacific R. R. Explor.*, (War Dept.), vol. VI, (Geology by J. S. Newberry; Paleontology by T. A. Conrad), Washington, 4to, plates.
1857. *Rep. on Pacific R. R. Explor.*, (War Dept.), vol. VII, (Geology by Thos. Antisell; Paleontology by T. A. Conrad), Washington, 4to, plates.
1857. *Rep. on Pacific R. R. Explor.*, (War Dept.), vol. VIII, Zoology; no Geology, Washington, 4to, plates.
1858. *Rep. on Pacific R. R. Explor.*, (War Dept.), vol. IX, Zoology; no Geology, Washington, 4to, plates.
1859. *Rep. on Pacific R. R. Explor.*, (War Dept.), vol. X, Zoology; no Geology, Washington, 4to, plates.
1855. *Rep. on Pacific R. R. Explor.*, (War Dept.), vol. XI, Literature of Surveys, and maps; no Geology, Washington, 4to.
1860. *Rep. on Pacific R. R. Explor.*, (War Dept.), vol. XII, Parts I and II, Botany and Zoology; no Geology, Washington, 4to, plates.
1862. *F. V. Hayden*, Rep. on Geology of Upper Missouri Region, Philadelphia, 4to, 218 pp., map.
1865. *F. B. Meek* and *F. V. Hayden*, Rep. on Paleontology of the Upper Missouri, Part I, (Smithsonian Cont.) Washington, 4to, 135 pp., 5 plates.

## PACIFIC COAST REGION.

## OREGON AND NORTHERN CALIFORNIA.

1848. *J. C. Fremont*, Rep. upon Upper California, Washington, 8vo.
1850. *James D. Dana*, Rep. on Geology of U. S. Explor. Exped., in 1838-42, New York, 4to, Atlas.
1850. *P. T. Tyson* and others, Reps. to War Dept., Washington, 8vo, 128 and 37 pp., 12 maps and sections.
1854. *Wm. P. Blake*, Rep. to War Dept., Washington, 8vo, 80 pp.

## CALIFORNIA.

1853. *John B. Trask*, 1st Ann. Rep. Geol. Sierra Nevada, — 1, 8vo, 31 pp.
1854. *J. B. Trask*, 2d Ann. Rep. Geol. Coast Mts. and part of S. Nevada, — 1, 8vo, 95 pp.
1855. *J. B. Trask*, 3d Ann. Rep. Geol. Coast Mts., Sacramento, 8vo, 93 pp.



1856. *J. B. Trask*, 4th Ann. Rep. Northern and Southern Cal., Sacramento, 8vo, 66 pp.  
 1855. *W. P. Blake*, Rep. to Coast Survey on Geology of Cal., Washington, 22 pp., 4to.  
 1861. *Josiah D. Whitney*, Address to Legislat., on Survey, San Francisco, 12mo, 50 pp.  
 1862. *J. D. Whitney*, Letter to Governor (Rep. of Progress), San Francisco, 8vo, 7 pp.  
 1862.\* *J. D. Whitney*, Address to Legislat., on Survey, San Francisco, 12mo, 33 pp.  
 1863. *J. D. Whitney*, 2nd Ann. Rep., San Francisco, 8vo, 12 pp.  
 1864. *J. D. Whitney*, Rep. Paleontology, vol. I, Philadelphia, 8vo, 243 pp., 32 pl. (Carboniferous and Jurassic Fossils by F. B. Meek; Triassic and Cretaceous, by W. M. Gabb.)  
 1865. *J. D. Whitney*, Rep. Geology, vol. I, Philadelphia, 8vo, 498 pp., 10 plates.  
 1866. *J. D. Whitney*, Rep. Paleontology, vol. II, part I, Philadelphia, 8vo, 38 pp. (Tertiary Invertebrate Fossils by W. M. Gabb.)  
 1866. *J. D. Whitney*, Letter to Governor on Survey, San Francisco, 8vo, 14 pp.

## CALIFORNIA AND ARIZONA.

1861. *Joseph C. Ives*, Rep. on Colorado River, Washington, 4to, plates, (Geology and Paleontology by J. S. Newberry.)

## BRITISH PROVINCES.

## NEWFOUNDLAND.

- 1839.\* *J. B. Jukes*, Prelim. Rep. (Legislative Doc.), folio, St. Johns.  
 1842.\* " General Rep. in Author's "Excursions in and about Newfoundland," London, 12mo, 2 vols. (Separate, with sections, London, 12mo, 160 pp. 1843.)

## NOVA SCOTIA.

- 1846.\* *J. W. Dawson*, Rep. on Coal-fields of Caribou Cove, &c. (Legis. Doc.) Halifax, folio.  
 1860. *Joseph Howe, and Henry How*, Rep. on Discovery of Gold in Nova Scotia, (Legis. Doc.) Halifax, folio, 4 pp.  
 1861. *J. Howe*, Rep. on Gold-fields. (Legis. Doc.) Halifax, folio, 7 pp.  
 1862. *Henry Poole*, Rep. on Gold-fields, Western Section. (Appendix on Minerals, by H. How.) (Legis. Doc.) Halifax, folio, 25 pp.  
 1862. *J. Campbell*, Rep. on Gold-fields, Eastern Section. (Legis. Doc.) Halifax, folio, 8 pp.  
 1863. *J. Campbell*, Rep. on Gold-fields. (Legis. Doc.) Halifax, folio, 12 pp.  
 1864.\* *David Honeyman*, Rep. on Geol. Survey of Nova Scotia, and Cape Breton. (Appendix on Minerals by H. How.) (Legis. Doc.) Halifax, folio, 7 pp.  
 1865. *H. How*, Rep. on Minerals collected by D. Honeyman. (Legis. Doc.) Halifax, folio, 4 pp.

## NEW BRUNSWICK.

1839. *Abraham Gesner*, 1st Ann. Rep., St. John, 8vo, 87 pp.  
 1840.\* " " 2d " " " "  
 1841.\* " " 3d " " " " 88 pp.  
 1842. " " 4th " " " " 101 pp.  
 1843. " " Rep., with account of Public Lands, St. John, 8vo.  
 1850.\* *J. Robb*, in Johnston's Agricultural Rep., Fredericton, 8vo, map.  
 1865. *L. W. Bailey*, Rep. on Southern N. Br., Fredericton, 8vo, 159 pp., map, section.  
 " *Henry Y. Hind*, Rep., especially on the Quebec Group, Fredericton, 8vo, 293 pp.

## CANADA.

1845. *Wm. E. Logan*, 1st Rep. (for 1843), Montreal, 12mo, 159 pp.  
 1846.\* " " Rep. (for 1844), " " 110 pp.  
 1847.\* " " (for 1845), " " 125 pp.  
 " \* " (for 1846), " " 66 pp.  
 " \* " 2 Repts. on Mining Region of Lake Superior, Montreal, 12mo, 31 pp.  
 1849.\* *W. E. Logan*, Rep. (for 1847), Montreal, 12mo, 165 pp.  
 1849.\* " " Rep. on N. shore Lake Huron, Montreal, 12mo, 51 pp.  
 1850. " " Rep. Progress for 1848, Toronto, 12mo, 65 pp.  
 " " " 1849, " " 115 pp.  
 1852. " " " 1850, Quebec, " 54 pp.  
 " " " 1851, " " 131 pp.  
 1854. " " " 1852, " " 179 pp.  
 1857. " " " 1853-6, Toronto, 12mo, 494 pp.  
 " Atlas, 4to, 22 pl.  
 1858. *W. E. Logan*, Rep. Progress for 1857, Toronto, 12mo, 240 pp.  
 1859. " " " 1858, Montreal, " 263 pp.  
 1863. " " General Report, from 1843 to 1863, Montreal, 8vo, xxvii and 983 pp. Atlas.  
 1858. *E. Billings, J. W. Salter* and *T. R. Jones*, Decade III, Cystidæ, Asteridæ and Entomotraca, Montreal, 8vo, 102 pp., 11 pl.  
 1859. *J. W. Salter*, Decade I, L. Silurian fossils, Montreal, 8vo, 47 pp., 10 pl.  
 " *E. Billings*, Decade IV, L. Silurian Crinoidæ, Montreal, 8vo, 72 pp., 10 pl.  
 1865. *Jas. Hall*, Decade II, Graptolites of Quebec Group, Montreal, 8vo, 151 pp., 23 pl.  
 1865. *E. Billings*, Paleozoic fossils of Canada, Montreal, 8vo, 426 pp.  
 1866. " " Catalogue Silurian Fossils of Anticosti, Montreal, 8vo, 93 pp.  
 1866. *W. E. Logan*, Rep. Progress from 1863 to 1866, Ottawa, 8vo, 322 pp.

## BRITISH AMERICA.

1858. *Henry Y. Hind*, Rep. of Explor. between Lake Superior, and Red River, Toronto, 8vo, 425 pp., maps.  
 1860.\* *H. Y. Hind*, Rep. on Assiniboine Exped. in 1858-9, Toronto, folio, maps.

- 1863.\* *H. Y. Hind*, Rep. of Explor. in Labrador, London, 8vo, 2 vols., maps.  
 1860. *Oscar M. Lieber*, Rep. on Geology of Labrador, (U. S. Coast Survey), Washington, 4to, 7 pp.

## ARCTIC REGIONS.

1819. *John Ross*, Voyage to Baffins' Bay, &c. (Appendix, on Geology, by John McCulloch), London, 8vo.  
 1822. *John Franklin*, Exped. to Polar Sea, 1819-22. (Appendix on Geology by John Richardson), London, 4to.  
 1828.\* *W. E. Parry*, 3d Voyage of Discovery in 1827. (Appendix on Geology by Robt. Jameson), London.  
 1828. *J. Franklin*, 2d Exped. to Polar Sea in 1825-7. (Appendix on Geology, by J. Richardson; Paleontology, by R. Jameson), London, 4to.  
 1835. *J. Ross*, 2nd Voyage of Discovery in 1829-33. (Geology by Author,) London, 4to, 2 vols.  
 1828.\* *G. Bach*, Arctic Land Exped. in 1833-5. (Appendix on Geology, by W. H. Fitton), London, 8vo.  
 1839. *F. W. Beechey*, Exped. to Pacific and Behren Strait. (Appendix on Geology, by Wm. Buckland), London, 4to.  
 1852.\* *P. C. Sutherland*, Journal of Voyage in Baffin's Bay, in 1850-51. (Appendix on Geology, by J. W. Salter), London, 8vo, 2 vols., plates.  
 1855. *E. Belcher*, Exped. to Arctic in 1852-4. (Appendix on Geology, by J. W. Salter), London, 8vo, 2 vols.

## ADDITIONS TO PART I.

## FLORIDA.

1851. *Louis Agassiz*, Rep. on Florida Coral-reefs, (U. S. Coast Survey), Washington, 8vo, 15 pp.  
 1864. *E. B. Hunt*, Rep. on Florida Coral-reefs, (U. S. Coast Survey), Washington, 4to, 7 pp.

ivo, 2 vols.,

U. S. Coast

on Geology,

ppendix on

Appendix on

Appendix on

C. Jameson),

(Geology by

ix on Geol-

it. (Appen-

in 1850-51.

8vo, 2 vols.,

on Geology,

oast Survey),

oast Survey),



