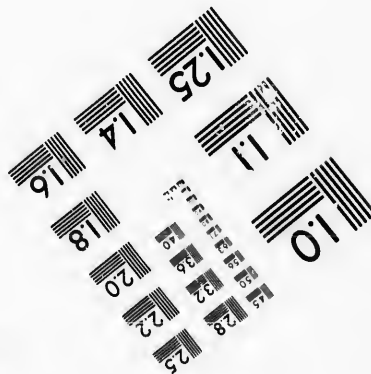
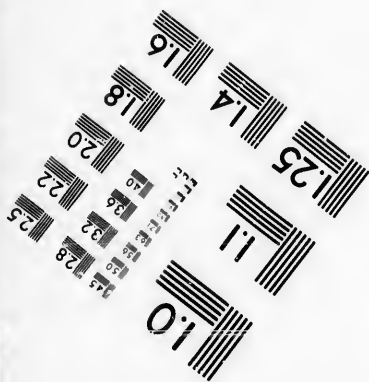
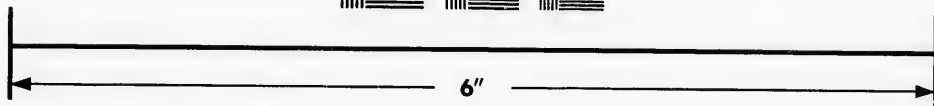
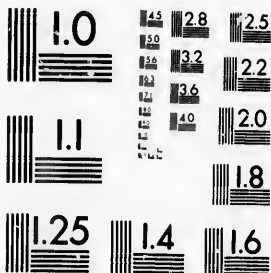


**IMAGE EVALUATION
TEST TARGET (MT-3)**



**Photographic
Sciences
Corporation**

23 WEST MAIN STREET
WEBSTER, N.Y. 14580
(716) 872-4503

25
28
32
36
40
20
18

**CIHM/ICMH
Microfiche
Series.**

**CIHM/ICMH
Collection de
microfiches.**



Canadian Institute for Historical Microreproductions / Institut canadien de microreproductions historiques

01

© 1987

Technical and Bibliographic Notes/Notes techniques et bibliographiques

The Institute has attempted to obtain the best original copy available for filming. Features of this copy which may be bibliographically unique, which may alter any of the images in the reproduction, or which may significantly change the usual method of filming, are checked below.

L'Institut a microfilmé le meilleur exemplaire qu'il lui a été possible de se procurer. Les détails de cet exemplaire qui sont peut-être uniques du point de vue bibliographique, qui peuvent modifier une image reproduite, ou qui peuvent exiger une modification dans la méthode normale de filmage sont indiqués ci-dessous.

Coloured covers/
Couverture de couleur

Covers damaged/
Couverture endommagée

Covers restored and/or laminated/
Couverture restaurée et/ou pelliculée

Cover title missing/
Le titre de couverture manque

Coloured maps/
Cartes géographiques en couleur

Coloured ink (i.e. other than blue or black)/
Encre de couleur (i.e. autre que bleue ou noire)

Coloured plates and/or illustrations/
Planches et/ou illustrations en couleur

Bound with other material/
Relié avec d'autres documents

Tight binding may cause shadows or distortion
along interior margin/
La reliure serrée peut causer de l'ombre ou de la
distorsion le long de la marge intérieure

Blank leaves added during restoration may
appear within the text. Whenever possible, these
have been omitted from filming/
Il se peut que certaines pages blanches ajoutées
lors d'une restauration apparaissent dans le texte,
mais, lorsque cela était possible, ces pages n'ont
pas été filmées.

Additional comments:/
Commentaires supplémentaires:

Coloured pages/
Pages de couleur

Pages damaged/
Pages endommagées

Pages restored and/or laminated/
Pages restaurées et/ou pelliculées

Pages discoloured, stained or foxed/
Pages décolorées, tachetées ou piquées

Pages detached/
Pages détachées

Showthrough/
Transparence

Quality of print varies/
Qualité inégale de l'impression

Includes supplementary material/
Comprend du matériel supplémentaire

Only edition available/
Seule édition disponible

Pages wholly or partially obscured by errata
slips, tissues, etc., have been refilmed to
ensure the best possible image/
Les pages totalement ou partiellement
obscurcies par un feuillet d'errata, une pelure,
etc., ont été filmées à nouveau de façon à
obtenir la meilleure image possible.

This item is filmed at the reduction ratio checked below/
Ce document est filmé au taux de réduction indiqué ci-dessous.

10X	14X	18X	22X	26X	30X
<input type="checkbox"/>	<input type="checkbox"/>	<input type="checkbox"/>	<input checked="" type="checkbox"/>	<input type="checkbox"/>	<input type="checkbox"/>
12X	16X	20X	24X	28X	32X

The copy filmed here has been reproduced thanks to the generosity of:

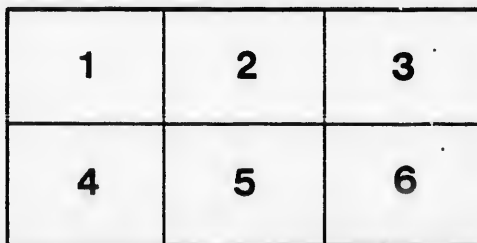
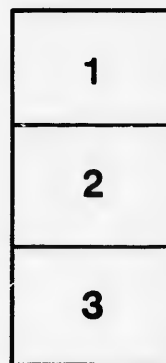
D. B. Weldon Library
University of Western Ontario
(Regional History Room)

The images appearing here are the best quality possible considering the condition and legibility of the original copy and in keeping with the filming contract specifications.

Original copies in printed paper covers are filmed beginning with the front cover and ending on the last page with a printed or illustrated impression, or the back cover when appropriate. All other original copies are filmed beginning on the first page with a printed or illustrated impression, and ending on the last page with a printed or illustrated impression.

The last recorded frame on each microfiche shall contain the symbol \rightarrow (meaning "CONTINUED"), or the symbol ∇ (meaning "END"), whichever applies.

Maps, plates, charts, etc., may be filmed at different reduction ratios. Those too large to be entirely included in one exposure are filmed beginning in the upper left hand corner, left to right and top to bottom, as many frames as required. The following diagrams illustrate the method:



L'exemplaire filmé fut reproduit grâce à la générosité de:

D. B. Weldon Library
University of Western Ontario
(Regional History Room)

Les images suivantes ont été reproduites avec le plus grand soin, compte tenu de la condition et de la netteté de l'exemplaire filmé, et en conformité avec les conditions du contrat de filmage.

Les exemplaires originaux dont la couverture en papier est imprimée sont filmés en commençant par le premier plat et en terminant soit par la dernière page qui comporte une empreinte d'impression ou d'illustration, soit par le second plat, selon le cas. Tous les autres exemplaires originaux sont filmés en commençant par la première page qui comporte une empreinte d'impression ou d'illustration et en terminant par la dernière page qui comporte une telle empreinte.

Un des symboles suivants apparaîtra sur la dernière image de chaque microfiche, selon le cas: le symbole \rightarrow signifie "A SUIVRE", le symbole ∇ signifie "FIN".

Les cartes, planches, tableaux, etc., peuvent être filmés à des taux de réduction différents. Lorsque le document est trop grand pour être reproduit en un seul cliché, il est filmé à partir de l'angle supérieur gauche, de gauche à droite, et de haut en bas, en prenant le nombre d'images nécessaire. Les diagrammes suivants illustrent la méthode.

rec
3/10/91

LIST OF VOTERS

1898

1898

THE Sheriff shall, immediately upon the receipt of his copies, cause one of them to be posted up in a conspicuous place in the Court House. The Clerk of the Peace upon the receipt of his copies shall cause one of them to be posted up in a conspicuous place in his office. Every Public or Separate School Head Master or Mistress shall in like manner post up one of his or her copies on the door of the school house, and every Postmaster shall post up one of his copies in the postoffice.—Voters' List Act, 1899, Chap. 3, Sec. 8.

1898

1898

VILLAGE OF LUCAN

No. on Roll

PART
tic

No. on Roll Jurors

5 J

23 J

40 J

41 J

96

96

207

132

52

6 J

75 J

245

270

267 J

270 J

271 J

272 J

96

96

27 J

62 J

42

109

261 J

255 J

230 J

232 J

No. on Roll

POLLING SUB-DIVISION No. 1

PART I—Persons entitled to vote at both Municipal Elections and elections to the Legislative Assembly.

No. on Roll	Jurors	NAME	Profession	Con. or St.	No. of Lot	Description of Voter
5	J	Armitage, William	Laborer	Con. 4	e pt 61	f, m f
23	J	Armitage, Robinson	Agent	Princess st	e pt 200, 201	f, m f
40	J	Armitage, J. R.	Merchant	Main st	n pt 199	f, m f
41	J	Armitage, M. H.	Clerk	Main st	n pt 199	os, m f
96		Atkinson, Fred	Butcher	Frank st	22	os, m f
96		Atkinson, Henry	Butcher	Frank st	22	os, m f
207		Atkinson, John	Laborer	Water st	51	t, m f
132		Buttler, Albert	Laborer	S L R	pt 5	os, m f
52		Bull, Aaron	Carpenter	Main st	n pt 28	t, m f
6	J	Braunton, W. J.	Barber	Main st	n pt 28	t, m f
75	J	Burnett, James	Farmer	S L R	pt farm 4	f, m f
245		Bice, John	Clerk	Water st	53	f, m f
270		Buttler, Frank	Farmer	S L R	pt 5	os, m f
267	J	Brand, Fred	Carpenter	S L R	pt 5	f, m f
270	J	Buttler, Peter	Farmer	S L R	pt farm 5	f, m f
271	J	Buttler, Everett	Farmer	S L R	pt farm 5	f, m f
272	J	Buttler, P. E.	Farmer	S L R	pt farm 5	f, m f
96		Betts, George	Laborer	William st	w pt 18	oc, m f
96		Betts, George	Engineer	William st	w pt 18	t, m f
27	J	Cathcart, George	Shoemaker	Princess st	43	f, m f
62	J	Creighton, Thomas	Hotelkeeper	Main st	n pt 30	f, m f
42		Collins, Frank	Tailor	Main st	pt 187	t, m f
109		Carter, Charles	Agent	Frank st	6	t, m f
261	J	Donovan, Win.	Foundryman	George st	72, 73	f, m f
255	J	Dagg, John	Laborer	William st	16	f, m f
290	J	Dight, Norris	Miller	William st	w pt 18	t, m f
232	J	Durham, L.	Clerk	Frank st	19	f, m f

OK

OK

OK

OK

OK

VILLAGE OF LUCAN

Sex of Voter	No. on Roll	Jurors	NAME	Profession	Con. or St.	No. of Lot	Description of Voter
f, m f	120		Matthews, J. H.	Laborer	William st	86	t, m f
f, m f	1		McMahon, John	Farmer	Con. 4	12	f, m f
f, m f	12	J	McCanley, Angus	Laborer	S L R	pt farm 5	t, m f
f, m f	236	J	McLean, Samuel	Laborer	Frank st	e pt 23	f, m f
f, m f	25	J	Mara, Edward	Gentleman	Princess st	109, pt 23	f, m f
t, m f	237		McLean, Fred	Teamster	Frank st	s pt 23	os, m f
	237		McLean, Edward	Tailor	Frank st	s pt 23	os, m f
5 t, m f	270		McCormick, J. A.	Merchant	Main st	2	t, m f
f, m f	26	J	McLean, Robert	Gentleman	Princess st	44, 45, 46	f, m f
f, m f	42	J	McFalls, Alex.	Hotelkeeper	Main st	pt 188, 189	t, m f
	48	J	MacDiarmid, William	Lawyer	Main st	s pt 137	t, m f
t, m f	70	J	McIllhargy, D.	Farmer	S L R	pt farm 5	f, m f
t, m f	217	J	McFalls, James	Laborer	William st	B 8	t, m f
f, m f	270		McCormick, Stephen	Merchant	Main st	2	t, m f
f, m f	72		Maedel, E.	Baker	William st	e pt 4	t, m f
	89		McNames, S.	Hotelkeeper	William st	S L R pt 5	t, m f
f, m f	110		McMartin, R.	Laborer	Frank st	w pt 2	t, m f
t, m f	242	J	Neil, Richard	Farmer	Frank st	6	f, m f
t, m f	240		O'Neil, Ralph	Saddler	Frank st	25	f, m f
f, m f	219	J	O'Shea, Daniel	Laborer	William st	10, 11	f, m f
f, m f	56	J	Orme, J. W.	Stagedriver	Main st	27, pt 28	f, m f
f, m f	34	J	O'Neil, F. A.	Banker	Main st	pt 191	f, m f
f, m f	20	J	O'Neil, R. A.	Clerk	Albert st	64	os, m f
f, m f	19	J	O'Neil, R. H.	Banker	Main st	253	f, m f
f, m f	241	J	Orme, Thomas	Gentleman	Frank st	35	f, m f
r, m f	111		Piper, Joseph	Laborer	Water st	53	t, m f
f, m f	113		Piper, Charles	Laborer	Water st	53	t, m f
as, m f	33	J	Porte, William	Gentleman	Main st	s pt 191, 192	f, m f
	34	J	Porte, Fred	Postmaster	Main st	s pt 191, 192	os, m f
f, m f	225	J	Patrick, Wm.	Farmer	William st	5	f, m f
t, m f	218	J	Ryan, Nathaniel	Farmer	William st	8	t, m f
m f	248	J	Ryan, John	Laborer	Water st	50	f, m f

Wh

Wh

Wh

Wh

Wh

Wh

Wh

Wh

Wh

LIST OF VOTERS

No. on Roll	Jurors	NAME	Profession	Con. or St.	No. of Lot	Description of Voter
257	J	Robinson, Henry	Laborer	Water st	31, 32	f, m f
206	J	Russell, James	Laborer	Water st	35, 36	f, m f
256		Ryan, John	Laborer	Water st	35, 36	t, m f
3	J	Sheridan, James	Laborer	Con 4	10	f, m f
8	J	Stanley, James	Agent	Main st	269, 270	f, m f
31	J	Shaw, Dr.	Physician	Main st	6	f, m f
45	J	Seeli, Alex.	Tailor	Main st	pt 188	t, m f
66	J	Stanley, B.	Gentleman	S L R	pt farm 5	f, m f
67	J	Stanley, A. E.	Grainbuyer	S L R	pt farm 5	os, m f
68	J	Stanley, Albert	Grainbuyer	S L R	pt farm 5	f, m f
71	J	Stewardson, James	Laborer	S L R	pt farm 4	f, m f
238	J	Simpson, Joseph	Laborer	Frank st	24	f, m f
241	J	Sprowl, William	Blacksmith	Frank st	7	f, m f
249	J	Stewardson, John	Pumpmaker	Water st	48, 49	f, m f
260	J	Seeli, Robert	Blacksmith	Water st	43	f, m f
93	J	Sprowl, Charles	Wagonmaker	Frank st	20	f, m f
99		Snell, William	Laborer	Frank st	21	t, m f
116		Stewardson, William	Blacksmith	Water st	47	os, m f
14	J	Trevetick, Samuel	Gentleman	Elm st	59, 60	f, m f
17	J	Tennant, Ezek	V. S.	Main st	256, 258	f, m f
265	J	Turner, Elijah	Farmer	George st	63	f, m f
128		Thompson, M.	Agent	S L R	pt 5	f, m f
120		Wedlock, John	Laborer	Water st	44	t, m f
239	J	Webb, T. A.	Baker	Main st	pt 191	f, m f
223	J	Whalen, John	Farmer	William st	5	f, m f
18	J	Wilson, James	Baker	Main st	pt 191	t, m f
18		Wilson, E.	Clerk	Main st	205	os, m f
253		Wright, James	Saddler	Water st	44	os, m f
222	J	Young, William	Laborer	William st	e pt 5	f, m f

VILLAGE OF LUCAN

No. on Roll	Jurors	NAME	Profession	Con. or St.	No. of Lot	Description of Voter
-------------	--------	------	------------	-------------	------------	----------------------

PART 2—Persons entitled to vote at Municipal Elections only

95		Atkinson, Mrs.		Frank st	22	f	
78		Atkinson, Miss A.		William st	1	t	
266		Braunton, Mrs.		Main st	60	f	
263		Bell, Mrs.		Main st	29	t	
12		Bullard, Mrs.		Elm st	s pt 169	f	
57		Battler, Mrs. E.		Main st	58, 59	f	
		<i>Cathleen Gies</i>		<i>Princess st</i>	<i>43</i>	f	<i>OK</i>
23		Cubbon, Mrs.		William st	w pt 5	f	
		<i>Dick Morris</i>		<i>Wm st</i>	<i>pt 18</i>	f	<i>OK</i>
15		Looney, Mrs.		Main st	259	t	
		<i>Deacon John</i>		<i>Wm st</i>	<i>2</i>	f	<i>OK</i>
215		Deacon, Mrs. J.		William st	1	f	
		<i>Deacon James</i>		<i>Wm st</i>	<i>2</i>	f	<i>OK</i>
213		Deacon, Mrs. S.		William st	2	f	
		<i>Deacon Richard</i>		<i>Main st</i>	<i>pt 29</i>	f	<i>OK</i>
61		Dow, Mrs.		Main st	s pt 30	f	
247		Donaldson, Miss L.		Frank st	59	f	
7		Eedy, Mrs.		Main st		f	
		<i>Foot R-</i>		<i>Wm st</i>		f	<i>OK</i>
72		Howard, Mrs.		S L R		f	
		<i>Hodgins Henry</i>		<i>main st</i>		f	<i>OK</i>
229		Hodgins, Mrs. H.		William st		f	
		<i>Howard Thos</i>		<i>S L R</i>		f	<i>OK</i>
253		Hodgins, Mrs. A.		Water st	18	f	
52		Hawkshaw, Mrs.		Main st	e pt 1	f	
216		Judge, Mrs.		William st	9	f	
60		Johnston, Mrs.		Main st	pt 95	f	
24		Jones, Mrs.		Princess st	202	f	
15		Kelly, Mrs.		Main st	256	f	
21		Lintott, Mrs.		Princess st	205	f	
28		Lee, Mrs.		Princess st	41	f	
26		Lee, M. J.		Princess st	42	f	
		<i>McKean Robt</i>		<i>Princess st</i>	<i>44-48</i>	f	<i>OK</i>
15		Mayo, Mrs.		Main st	261, 262	f	
211		McRoberts, Mrs.		William st	e pt 3	f	
93		Maguire, Miss A.		Frank st	u pt 23	f	
83		Meads, Mrs.		William st	12	f	
20		McWhinney, Mrs.		Princess st	203	f	
		<i>Neil Richd</i>		<i>Frank st</i>	<i>6</i>	f	<i>OK</i>

LIST OF VOTERS

No. on Roll	Jurors	NAME	Profession	Con. or St.	No. of Lot	Description of Voter
		<i>Oncil R</i>		<i>Frank st</i>	<i>25</i>	<i>Frank st</i>
		<i>O'Boyle, Mrs.</i>		<i>Elm at</i>	<i>n pt 69</i>	<i>Frank st</i>
		<i>Patrick Wynn</i>		<i>Wynn St</i>	<i>5</i>	<i>Frank st</i>
258		<i>Parker, Mrs.</i>		<i>George st</i>	<i>71, 75</i>	<i>Frank st</i>
		<i>Ryan Michael</i>		<i>Wynn St</i>	<i>85-86</i>	<i>Frank st</i>
11		<i>Scott, Mrs.</i>		<i>Elm st</i>	<i>n pt 63</i>	<i>Frank st</i>
61		<i>Shaw, Miss N.</i>		<i>S L R</i>	<i>pt farm 4</i>	<i>Frank st</i>
207		<i>Sprout, Mrs.</i>		<i>William st</i>	<i>e pt 5</i>	<i>Frank st</i>
		<i>Sheridan, Ellen</i>		<i>Con. 4</i>	<i>11</i>	<i>f</i>
		<i>Sheridan, Nora</i>		<i>Con. 4</i>	<i>11</i>	<i>f</i>
		<i>Frederick Samuel</i>		<i>Con. st</i>	<i>57-60</i>	<i>Frank st</i>
265		<i>Thompson, Mrs. J.</i>		<i>S L R</i>	<i>43</i>	<i>Frank st</i>
		<i>Turner Elizabeth</i>		<i>Con. st</i>	<i>63</i>	<i>Frank st</i>
20		<i>Willis, Maud</i>		<i>Albert st</i>	<i>e pt 65</i>	<i>Frank st</i>
		Willis, Maud		Main st	49	Frank st

PART 3—Persons entitled to vote at Elections to the Legislative Assembly only

		<i>Bawden, W. J.</i>	<i>Mason</i>	<i>Main st</i>	<i>193</i>	<i>m f</i>
		<i>Bawden, Oscar</i>	<i>Mason</i>	<i>Main st</i>	<i>193</i>	<i>m f</i>
		<i>Copland, J.</i>	<i>Laborer</i>	<i>Main st</i>	<i>61, 62</i>	<i>m f</i>
		<i>Dishman, Wm.</i>	<i>Laborer</i>	<i>Main st</i>	<i>149</i>	<i>m f</i>
		<i>Ellis, Bert</i>	<i>Clerk</i>	<i>Main st</i>	<i>pt 191</i>	<i>m f</i>
		Langford, Norman	Baker	William st	194	m f
		Morgan, Ed	Laborer	Frank st	7	m f
		<i>McMahon, James</i>	<i>Laborer</i>	<i>Main st</i>	<i>41</i>	<i>m f</i>
		<i>McCarty, Frank</i>	<i>Laborer</i>	<i>S L R</i>	<i>pt farm 5</i>	<i>m f</i>
		<i>Munroe, A.</i>	<i>Laborer</i>	<i>S L R</i>	<i>pt farm 5</i>	<i>m f</i>
		McMahon, A.	Laborer	Main st	142	Frank st
		<i>Piper, James</i>	<i>Laborer</i>	<i>Water st</i>	<i>23</i>	<i>m f</i>
		<i>Sprowl, William</i>	<i>Laborer</i>	<i>Frank st</i>	<i>7</i>	<i>m f</i>
		<i>Tier, Wm.</i>	<i>Teacher</i>	<i>Main st</i>	<i>188</i>	<i>m</i>
		Whitewright, John	Laborer	Water st	37, 38, 39	m f

POLLING SUB-DIVISION No. 2

PART I—Persons entitled to vote at both Municipal Elections and elections to the Legislative Assembly.

No. on Roll	Jurors	NAME	Profession	Con. or St.	No. of Lot	Description of Voter
157	J	Anderson, James	Carriagem'r	Alice st	10	f, m f
218	J	Allway, James	Laborer	Market st	134	f, m f
249		Allway, Robert	Laborer	Market st	134	os, m f
198	J	Armitage, John B.	Laborer	Con. 4	pt 2	f, m f
202	J	Abrey, John	Laborer	Maple st	pt 62	t, m f
158		Ashury, Robert	Carriagem'r	Main st	85	t, m f
83		Brummel, R.	Gentleman	Main st	103, 104	f, m f
91	J	Barnden, John	Builder	Francis st	35, 36	f, m f
95	J	Braithwaite, A. T.	Merchant	Main st	91	t, m f
273		Proulx, James	Printer	Alice st	173	os, m f
185	J	Canning, Joseph	Laborer	Main st	pt 7	t, m f
204	J	Cooper, Wm.	Laborer	Beech st	9	f, m f
187	J	Collins, H.	Tinsmith	Market st	129	f, m f
180	J	Cooper, R.	Laborer	Market st	101	os, m f
109	J	Cuthcart, J.	Farmer	Main st	pt 158	f, m f
93	J	Cain, John	Gentleman	Main st	n pt 192	f, m f
178		Collins, Robert	Tinsmith	Market st	130, 131	f, m f
193		Culbert, Wm.	Farmer	Richmond st	235	f, m f
149		Dishman, Wm. sr.	Laborer	Main st	n pt 92	t, m f
102	J	Daltry, O. E.	Ins. Agent	Beech st	144, 143	t, m f
110	J	Diamond, Wm.	Engineer	Main st	158	f, m f
155	J	Dagg, W. J.	Laborer	Alice st	13, 26	f, m f
153	J	Downing, Frank	Butcher	Alice st	9	f, m f
204	J	Downing, Wm.	Butcher	Francis st	37	t, m f
165	J	Dight, Thomas	Merchant	Alice st	167	f, m f
206	J	Davis, Wm.	Gentleman	Beech st	61	f, m f
156	J	Darling, Thomas	Butcher	Main st	pt 84, 85	t, m f
146	J	Ellwood, Charles	Tailor	Main st	e pt 149	t, m f

LIST OF VOTERS

No. on Roll	Jurors	NAME	Profession	Con. or St.	No. of Lot	Description of Voter
133	J	Eoad, J. H.	Clergymen	Francis st	207, 208	oc, m f
104	J	Fox, Leonard	Merchant	Main st	87	f, m f
115	J	Fox, John	Banker	Main st	160	f, m f
115		Fox, Fred.	Clerk	Main st	160	os, m f
123		Fitzgerald, F. H.	Laborer	Richmond st	235	t, m f
256		Foreman, John	Gentleman	Beech st	144	t, m f
256		Gilfillan, John	Laborer	Con. 4	s pt 2	f, m f
255		Gilfillan, R.	Laborer	Con. 4	s pt 2	f, m f
85		Cusot, Robert	Gentleman	Main st	99, 100	f, m f
145	J	Gilfillan, J. S.	Merchant	Princess st	208, 209	f, m f
217		Gilfillan, R. A.	Laborer	Con. 4	s pt 2	oc, m f
117		Gillispie, J. S.	Gentleman	Main st	259	f, m f
231		Garbutt, G. W.	Gentleman	Alice st	184	f, m f
158		Goodacre, A.	Gentleman	Main st	s pt 86	f, m f
67		Hall, Thomas	Farmer	N L R	pt farm 4	os, m f
80	J	Hodgins, Thomas	Merchant	Main st	111, 112	f, m f
161		Hartton, John	Farmer	Alice st	183	f, m f
85	J	Hodgins, John S.	Merchant	Main st	99, 100	f, m f
99	J	Hodgins, Thomas	Blacksmith	Main st	82	f, m f
191		Hodgins, John	Farmer	Con. 4	231	f, m f
239		Haskett, Charles	Cabinetm'r	Market st	134	f, m f
117	J	Hodgins, J. J.	Merchant	Main st	161	f, m f
118	J	Hodgins, R. S.	Merchant	Beech st	150, 151	f, m f
127	J	Hossock, Thomas	Physician	Main st	239	f, m f
134	J	Howard, William	Laborer	Con. 4	226, 227	f, m f
120		Howard, J. H.	Wagonm'r	Con. 4	226, 227	os, m f
182	J	Haskett, Wm.	Drover	Market st	97, 98	f, m f
184	J	Hooper, Wm.	Gentleman	Market st	94, 95	f, m f
168	J	Hawkshaw, C.	Miller	Market st	226	f, m f
236		Hennessey, Thos.	Porter	Market st	99	t, m f
267		Hunn, Henry	Laborer	Buttler st	151	t, m f
214		Horn, Richard	Blacksmith	Alice st	15, 16	f, m f
222		Haskett, John	Gentleman	Alice st	e pt 7	t, m f
245		Hodgins, John	Stagedriver	Market st	99	t, m f

VILLAGE OF LUCAN

No. on Roll	Jurors	NAME	Profession	Con. or St.	No. of Lot	Description of Voter
150		Irwin, James	Printer	Main st	93	t, m f
171	J	Jackson, John	Foundryman	Alice st	173	f, m f
183	J	Kimber, John	Carpenter	Market st	95, 97	f, m f
87	J	Kent, Wm. Jr.	Farmer	Main st	144, 145	f, m f
80	J	Lusk, James	Farmer	Main st	e pt 164	f, m f
109		Lusk, James jr.	Laborer	Main st	e pt 164	os, m f
164		Lambrook, H.	Gentleman	Main st	s pt	f, m f
183		Lusk, Andrew	Laborer	Main st	pt 164	os, m f
137		McLean, Phoenix	Farmer	Main st	113, 114	t, m f
189	J	McNamee, Robert	Shoemaker	Beech st	33	f, m f
87	J	McCosh, J. D.	Merchant	Main st	97, 98	f, m f
185		McCarty, Dan	Laborer	Buttler st	152	t, m f
96		Murdock, Hugh	Teamster	Main st	90	os, m f
97	J	Murdy, John	Undertaker	Main st	81	f, m f
98	J	Murdy, Clifton	Farmer	Buttler st	132, 133	os, m f
100	J	McConnell, J. H.	Tailor	Main st	pt 81	f, m f
105	J	Matheson, Wm.	Jeweler	Main st	88	f, m f
112	J	McIllhargy, Patrick	Farmer	Main st	159	f, m f
114	J	McComb, J. R.	Merchant	Main st	160	f, m f
126	J	Mulloy, C. W.	Teacher	Main st	136, 137	f, m f
138	J	McKinnon, Donald	Laborer	Main st	82	f, m f
159	J	McDougall, Allan	Blacksmith	Princess st	9	t, m f
169	J	Mowbray, R.	Agent	Alice st	170, 171	f, m f
149	J	McLeod, Robert	Merchant	Alice st	w pt 165	f, m f
180		Neil, Franklin	Farmer	Beech st	153	f, m f
178		Neil, Daniel	Gentleman	Beech st	153	f, m f
161	J	Neil, Albert	Operator	Alice st	0	f, m f
154	J	O'Neil, Daniel	Gentleman	Alice st	13	f, m f
138	J	O'Connor, John	Laborer	Princess st	32	f, m f
101	J	O'Shea, James	Shoemaker	Main st	e pt 85	f, m f
129		O'Mara, John	Laborer	Con. 4	1	os, m f

EE

EE

EE

EE

LIST OF VOTERS

No. on Roll	Jurors	NAME	Profession	Con. or St.	No. of Lot	Description of Voter
177		Park, James	Merchant	Main st	n pt 182	t, m f
205	J	Preston, Samuel	Carpenter	Beech st	64	t, m t
123	J	Park, J. S.	Harnessm'r	Alice st	173	t, m f
133	J	Patrick, William	Farmer	Main st	951	f, m f
251	J	Perley, Daniel	Carpenter	Market st	83, pt 84	f, m f
251		Perley, W.	Laborer	Market st	pt 84	f, m f
152	J	Quigley, Caleb	Painter	Alice st	14	f, m f
274		Ryder, John	Farmer	Buttler st	152	f, m f
49	J	Read, Wm.	Liveryman	Main st	e pt 149	f, m f
194	J	Robinson, Wm. jr.	Laborer	Market st	105, 106	os, m f
193	J	Robinson, Wm.	Laborer	Market st	105, 105	f, m f
177	J	Robinson, Thos.	Laborer	Market st	103	f, m f
124	J	Ross, James M.	Clerk	Alice st	pt 7	t, m f
149		Robinson, Wm.	Mason	Alice st	21, 22	t, m f
263		Bryan, John	Laborer	Buttler st	152	t, m f
166		Robinson, George	Butcher	Market st	103	os, m f
178		Smith, George	Clark	Main st	n pt 185	os, m f
79	J	Simpson, William	Gentleman	Main st	113, 114	f, m f
82	J	Stanley, W. R.	Bookkeeper	Main st	105, 106	f, m f
90	J	Stanley, W. E.	Merchant	Main st	95, 96	f, m f
119	J	Stanley, Charlie	Merchant	Main st	162	t, m f
137	J	Sadler, Arthur	Laborer	Princess st	31	f, m f
142	J	Stanley, L. D.	Merchant	Princess st	37	f, m f
143	J	Stanley, George	Merchant	Princess st	38	f, m f
419	J	Sceli, James	Laborer	Con. 4	e pt 63	f, m f
161		St. John, Robt.	Hotelkeeper	Main st	157	t, m f
182		Stewart, Wm.	Harnessm'r	Main st	pt 164	t, m f
124	J	Thom, J. S.	Photographer	Main st	pt 7	f, m f
148	J	Tracey, Thomas	Laborer	Alice st	23, 24	os, m f
186		Thompson, M.	Operator	Main st	236	t, m f
160	J	Thompson, Richard	Farmer	Alice st	8	t, m f

VILLAGE OF LUCAN

No. on Roll	Jurors	NAME	Profession	Con. or St.	No. of Lot	Description of Voter
203	J	Thurman, Green	Laborer	Beech st	788	f, m f
158		Wray, J. P.	Miller	Main st	n pt 186	t, m f
196	J	Ward, William	Flaxgrower	Con. 4	s pt 3	f, m f
197	J	Ward, John	Laborer	Con. 4	pt 3	t, m f
200	J	Webb, Thomas	Gentleman	Beech st	pt 4	f, m f
201	J	Williams, John	Laborer	Maple st	pt 62	t, m f
195		Walden, Ben	Farmer	Richmond st	202	f, m f
266		Whalen, James	Farmer	Buttler st	149	t, m f
182		Webster, J. L.	Photographer	Alice st	w pt 7	t, m f

PART 2—Persons entitled to vote at Municipal Elections only

165		Atkinson, Emma		Main st	161	f	
		<i>Barden John</i>		" "		f	<i>EL</i>
192		Blackwell, Mrs. E.		Maple st	136	f	
172		Brownlee, Mrs.		Alice st	178	f	
		<i>Cathcart John</i>		<i>main st</i>	<i>154</i>	f	<i>EL</i>
167		Cathcart, Mrs.		Alice st	168	f	
179		Cooper, Mrs.		Market st	101	f	
146		Cole, Mrs.		Francis st	210, 211	f	
		<i>Sight Thos</i>		<i>alice st</i>	<i>167</i>	f	<i>EL</i>
159		DeLyon, Miss		Main st	s pt 86	t	
143		Dagg, Mrs. J.		Alice st	12, 20	f	
136		Davis, Mrs.		Con. 4	223, 224	f	
175		Durham, Mrs.		Alice st	184	f	
130		Frise, Mrs.		Main st	44, 45	f	
		<i>Hodgins John S</i>		<i>main st</i>	<i>99-100</i>	f	<i>EL</i>
76		Hall, Mrs.		N L R	4	f	
		<i>Hodgins R</i>		<i>Beech st</i>	<i>150</i>	f	<i>EL</i>
131		Hodgins, Miss Eliza		Main st	246, 247	f	
		<i>Hodgins Ed</i>		<i>Con 4</i>	<i>231</i>	f	<i>EL</i>
129		Hodgins, Mrs. A.		Princess st	81	f	
150		Harrigan, Mrs.		Alice st	18, 19	f	
18		Hodgins, Mrs. J.		Market st	99	f	
		<i>Kinnell John</i>		<i>market st</i>	<i>95</i>	f	<i>EL</i>
182		Kinnee, Mrs.		Market st	96	f	
		<i>Kent Wm</i>		<i>main st</i>	<i>144</i>	f	<i>EL</i>
81		Langford, Hannah		Main st	107, 108	f	
154		Murdock, Mrs.		Main st	90	f	

No. on Roll	Jurors	NAME	Profession	Con. on St.	No. of Lot	Description of Voter
196		Marshall, Mrs.		Con. 4	226	t
188		McNair, Miss J.		Main st	236	t
132		McDougall, Mrs.		Main st	249, 250	f
205		McLland, Miss <i>Neil Franklin</i>		Francis st	214, 215	f
199		O'Mara, Mrs. <i>Neil Daniel</i>		Francis st	35, 36	f
163		Porte, Mrs. G. <i>Neil Albert</i>		Alice st	159	f m f
103		Quigley, Mrs. Wm. <i>Patrick Wm</i>		main	257	f m f
274		Scel, Mrs. <i>John</i>		Market st	104	f
121		Smith, Mrs. M. G. <i>James Wm</i>		Buttler st	153	f m f
192		Scott, Mrs. <i>Sadler Arthur</i>		Alice st	179	f
49		Tracey, Mrs.		Main st	114	f m f
191		Ward, Miss M. <i>Walter Wm</i>		Con. 4	224, 225	t
				Alice st	23, 24	f
				Con. 4	n pt 3	f
				Richmond st	235	f m f

PART 3—Persons entitled to vote at Elections to the Legislative Assembly only

265		Boyd, M.	Laborer	Main st	157	m f
226		Hodgins, Edward	Laborer	Alice st	166	m f
166		McFalls, Robert	Laborer	Main st	128	m f
127		McKinnon, D. jr.	Laborer	Princess st	32	m f
252		Monckton, Richard	Shoemaker	Main st	90	m f
216		Meme, Henry	Mason	Alice st	10	m f
249		Stewart, F. A.	Teacher	Market st	64	m f
268		Whalen, James jr.	Laborer	Buttler st	162, 163	m f
269		Whalen, Dan	Laborer	Buttler st	162, 163	m f
270		Whalen, Jerry	Laborer	Buttler st	162, 163	m f

I, G. A. Stanley, Clerk of the Municipality of the Village of Lucan, in the County of Middlesex, do hereby certify that Parts One and Three (1 and 3) of the within Voters' List for the year 1898 constitute a correct list of all persons appearing by the last Revised Assessment Roll of the said Municipality to be entitled to vote at Elections for Members of the Legislative Assembly; and that parts One and Two (1 and 2) constitute a correct list for the same year of all persons appearing by the said Roll to be entitled to vote at Municipal Elections in the said Municipality. And I also certify that the aggregate number of names of persons on the said list who are qualified to serve as Jurors, is one hundred and fifty-eight (158). And I hereby call upon all electors to examine the said list, and if any omission or other errors are perceived therein, to take immediate proceedings to have the said errors corrected according to law.

Dated at my office this 27th day of July, 1898.

This said list was first posted up in my office on the 12th day of August, 1898.

G. A. STANLEY, Clerk.

CAHONLUC R18 X7 V54 DE

Description of
Woter

t
t
f
f

f
m 31
f
m 31
du 44
f
m 31
f
m 31
t

f
f
m 31
legis-

m f
m f
m f
m f
m f
m f
m f
m f
m f
m f

in the
of the
bearing
note at
Two
e said
and I
o are
y call
e per-
ecord-

CAYONLUC R18 X7 V54 DE

8.

