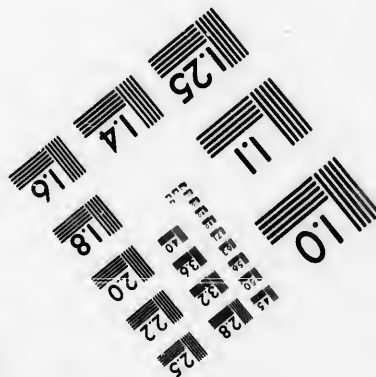
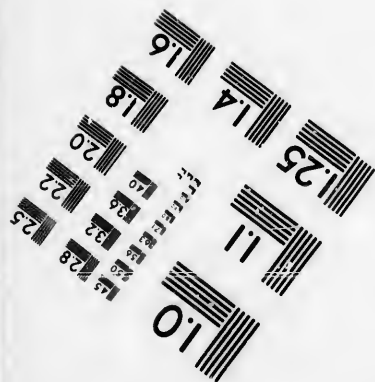
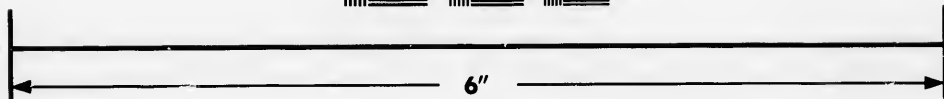
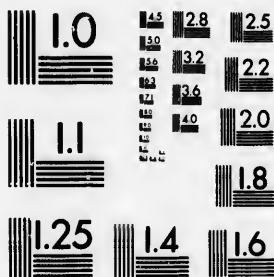


**IMAGE EVALUATION
TEST TARGET (MT-3)**



**Photographic
Sciences
Corporation**

23 WEST MAIN STREET
WEBSTER, N.Y. 14580
(716) 872-4503



**CIHM/ICMH
Microfiche
Series.**

**CIHM/ICMH
Collection de
microfiches.**



Canadian Institute for Historical Microreproductions / Institut canadien de microreproductions historiques



© 1986

Technical and Bibliographic Notes/Notes techniques et bibliographiques

The Institute has attempted to obtain the best original copy available for filming. Features of this copy which may be bibliographically unique, which may alter any of the images in the reproduction, or which may significantly change the usual method of filming, are checked below.

L'Institut a microfilmé le meilleur exemplaire qu'il lui a été possible de se procurer. Les détails de cet exemplaire qui sont peut-être uniques du point de vue bibliographique, qui peuvent modifier une image reproduite, ou qui peuvent exiger une modification dans le méthode normale de filmage sont indiqués ci-dessous.

- | | |
|--|--|
| <input type="checkbox"/> Coloured covers/
Couverture de couleur | <input checked="" type="checkbox"/> Coloured pages/
Pages de couleur |
| <input type="checkbox"/> Covers damaged/
Couverture endommagée | <input type="checkbox"/> Pages damaged/
Pages endommagées |
| <input type="checkbox"/> Covers restored and/or laminated/
Couverture restaurée et/ou pelliculée | <input type="checkbox"/> Pages restored and/or laminated/
Pages restaurées et/ou pelliculées |
| <input type="checkbox"/> Cover title missing/
Le titre de couverture manque | <input checked="" type="checkbox"/> Pages discoloured, stained or foxed/
Pages décolorées, tachetées ou piquées |
| <input type="checkbox"/> Coloured maps/
Cartes géographiques en couleur | <input type="checkbox"/> Pages detached/
Pages détachées |
| <input checked="" type="checkbox"/> Coloured ink (i.e. other than blue or black)/
Encre de couleur (i.e. autre que bleue ou noire) | <input type="checkbox"/> Showthrough/
Transparence |
| <input checked="" type="checkbox"/> Coloured plates and/or illustrations/
Planches et/ou illustrations en couleur | <input type="checkbox"/> Quality of print varies/
Qualité inégale de l'impression |
| <input checked="" type="checkbox"/> Bound with other material/
Relié avec d'autres documents | <input type="checkbox"/> Includes supplementary material/
Comprend du matériel supplémentaire |
| <input type="checkbox"/> Tight binding may cause shadows or distortion
along interior margin/
La reliure serrée peut causer de l'ombre ou de la
distorsion le long de la marge intérieure | <input type="checkbox"/> Only edition available/
Seule édition disponible |
| <input type="checkbox"/> Blank leaves added during restoration may
appear within the text. Whenever possible, these
have been omitted from filming/
Il se peut que certaines pages blanches ajoutées
lors d'une restauration apparaissent dans le texte,
mais, lorsque cela était possible, ces pages n'ont
pas été filmées. | <input type="checkbox"/> Pages wholly or partially obscured by errata
slips, tissues, etc., have been refilmed to
ensure the best possible image/
Les pages totalement ou partiellement
obscurcies par un feuillet d'errata, une pelure,
etc., ont été filmées à nouveau de façon à
obtenir la meilleure image possible. |
| <input checked="" type="checkbox"/> Additional comments: [Printed ephemera] [4] p.
Commentaires supplémentaires: | |

This item is filmed at the reduction ratio checked below/
Ce document est filmé au taux de réduction indiqué ci-dessous.

10X	12X	14X	16X	18X	20X	22X	24X	26X	28X	30X	32X
				/							

The copy filmed here has been reproduced thanks to the generosity of:

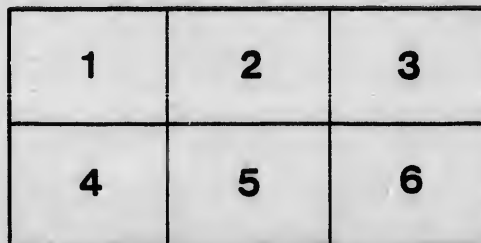
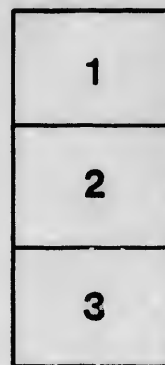
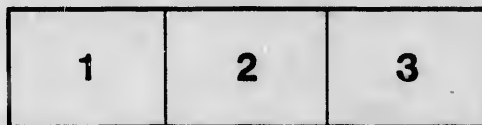
D. B. Weldon Library
University of Western Ontario
(Regional History Room)

The images appearing here are the best quality possible considering the condition and legibility of the original copy and in keeping with the filming contract specifications.

Original copies in printed paper covers are filmed beginning with the front cover and ending on the last page with a printed or illustrated impression, or the back cover when appropriate. All other original copies are filmed beginning on the first page with a printed or illustrated impression, and ending on the last page with a printed or illustrated impression.

The last recorded frame on each microfiche shall contain the symbol \rightarrow (meaning "CONTINUED"), or the symbol ∇ (meaning "END"), whichever applies.

Maps, plates, charts, etc., may be filmed at different reduction ratios. Those too large to be entirely included in one exposure are filmed beginning in the upper left hand corner, left to right and top to bottom, as many frames as required. The following diagrams illustrate the method:



L'exemplaire filmé fut reproduit grâce à la générosité de:

D. B. Weldon Library
University of Western Ontario
(Regional History Room)

Les images suivantes ont été reproduites avec la plus grand soin, compte tenu de la condition et de la netteté de l'exemplaire filmé, et en conformité avec les conditions du contrat de filmage.

Les exemplaires originaux dont la couverture en papier est imprimée sont filmés en commençant par le premier plat et en terminant soit par la dernière page qui comporte une empreinte d'impression ou d'illustration, soit par le second plat, selon le cas. Tous les autres exemplaires originaux sont filmés en commençant par la première page qui comporte une empreinte d'impression ou d'illustration et en terminant par la dernière page qui comporte une telle empreinte.

Un des symboles suivants apparaîtra sur la dernière image de chaque microfiche, selon le cas: le symbole \rightarrow signifie "A SUIVRE", le symbole ∇ signifie "FIN".

Les cartes, planches, tableaux, etc., peuvent être filmés à des taux de réduction différents. Lorsque le document est trop grand pour être reproduit en un seul cliché, il est filmé à partir de l'angle supérieur gauche, de gauche à droite, et de haut en bas, en prenant le nombre d'images nécessaire. Les diagrammes suivants illustrent la méthode.

"Choose well your set: our feeble nature seeks
The aid of Clubs, the countenance of cliques."—Holmes.

THE BACONIAN CLUB.

Annual Eighth Banquet



Engraved by John Alwood & Co. Boston U.S.A.

No 63 B.

FRIDAY, 20TH MAY, 1892

GRIGG HOUSE, - LONDON, CANADA.

"The true essentials of a feast are only fun and feed."—Holmes.
"We're going to have a roaring time, with lots of fun and noise;
Distinguished guests, et cetera, the Judge, and all the boys."—Holmes.

Menu.

"Lay on, Macduff,
And damned be he that first cries 'Bold, enough.'"—Macbeth.

Soup.

"I could have seen to spear a salmon in six fathom of it."

Deep Sea Turtle, au Madelra.

Relishes.

Young Onions. Lettuce. Radishes. Sliced Tomatoes.

Fish.

Baked Whitefish, a la Maitre d'Hotel, Pomme de terre Dutchess.

Boiled.

Southdown Leg of Mutton, Caper Sauce.

Boiled Yorkshire Cured Ham. Boiled Fowl, Parsley Sauce.

Buffalo Tongue.

Roasts.

Sirloin of Beef, Yorkshire Pudding. Roast Turkey, Stuffed, Cranberry Sauce.
Spring Lamb, Mint Sauce. Prime Ribs of Beef, Horse Radish.

"Let no compunctious visitings of nature
Shade my fell purpose."—Macbeth.

Entrees.

Boston Baked Pork and Beans.

English Sweetbreads, garnished au Champignon.

Spring Chicken Wings, Drop Dumpling. Spanish Puffs, Crystal Sauce.

Salads.

Chicken Salad. Cold Ham. Potato Salad. Lobster Salad.
Mayonnalse Salmon.

Vegetables.

Mashed Potatoes. Plain Boiled Potatoes. Baked Sweet Potatoes.
Spinach. Asparagus, a la Cream. Sugar Corn.

Puddings and Pastry.

Boiled English Plum Pudding, Brandy Sauce.
Apple Pie. Lemon Meringue Pie. Mince Pie.

Dessert.

Lemon Jelly. Baltimore Ice Cream. Brandy Jelly.
Lady Fingers. Jelly Cake. Cocoanut Cake. Fruit Cake. Charlotte Russe.

"Our cake is dough."—Taming of the Shrew.

Fruit.

Pineapple. London Layer Raisins. Bananas.
Florida Oranges. Snow Apples. Assorted Nuts.

Green Tea. English Breakfast Tea. Black Tea.
Roquefort Cheese. French Coffee. American Cheese.

"In mercy spare us when we do our best."—Juvenal

" 'Tis reason now, 'twas appetite before."—Ovid.
"Thought in the mind may come forth bold or dross ;
When coined in words we know its real worth."—Young

Joasts.

"Our vicar still preaches that Peter and Poule
Laid a swinging long curse on the donny brown bowl.
But whoop, Jack, off with your liquor,
Drink, upsecs, out and a fig for the vicar."—Scott.

The Queen.

"Watch for her, fight for her, bleed for her, die for her,
As every trucborn subject ought."—Otway.

The Baconian Club.

R. A. GRAY.

"The chloce and master spirits of the age."—Julius Cæsar.

Our Country.

G. N. WEEKES.

JOS. ROGERS.

"No interest and no party—but my country."—Thomson.

The Memory of Lord Bacon.

W. A. BUCHNER.

"The wisest, brightest, meanest of mankind."—Pope.

The Learned Professions.

"Multitudes of ingenious gentlemen who starve each other."—Addison.

Law.

DR. WELD.

"'Tis my vocation, hal ; 'tis no sin for
a man to labor in his vocation."
—Henry iv.

Divinity.

C. G. JARVIS.

"Who should study to prefer a peace
Of holy churchmen dare delight in
broils?"—Henry vi.

Medicine.

REV. M. P. TALLING.

"Purge, and leave sack, and live
cleanly."—Henry iv.

Education.

G. R. FABKIN.

"Thank Heaven, never son of mine
Saw Gawain, e'er could pen a line."
—Scott.

Our Manufacturing Interests.

JOHN STEVENSON.

"All work, even cotton spinning, is noble ; work is alone noble."—Carlyle.

Music and the Drama.

R. A. LITTLE.

W. G. OWENS.

"I'm never merry when I hear sweet music."—Merchant of Venice.

"The nation is a company of players."—Juvenal.

The Ladies.

W. C. COO.

C. POWELL.

W. C. FERGUSON.

"Be to her faults a little blind,
Be to her virtues very kind,
And clap your padlock on her mind"—Horace.

Our Ta-ra-ra-boom-de-ay's.

"There's scarce a maid westward but she sings it ; 'tis in
request, I can tell you."—A Winter's Tale.

"We must not stint
Our necessary actions, in the fear
To cope malicious censurers."—*Henry viii.*

Officers.

SEASON 1891-1892.

"Fear not your advancement; I will be the man yet that shall make you great."
—*Henry iv.*

President—R. A. Gray.

Vice-President—W. A. Probert.

Secretary-Treasurer—Jos. Rogers.

EXECUTIVE COMMITTEE.

G. N. Weekes.

Rev. M. P. Talling.

W. C. Coe.



Deleytamiento.

RECITALS.

"Speak the speech I pray you, as I pronounced it to you, trippingly on the tongue."
—*Hamlet.*

R. A. Little.

W. J. Harvey.

U. A. Buchner.

J. J. Coughlin.

"Wet my cheeks with artificial tears
And frame my face to all occasions."—*Henry vi.*

MUSIC.

"And while I pause serve in your harmony."—*Taming of the Shrew.*

Roselle Pockocke.

C. Powell.

W. C. Ferguson.

R. A. Gray.

"I've a song to sing, not too long to sing,
And I hope you will think it not wrong to sing."

"We take no note of time."—*Young.*



"The bell strikes one.

The dead of night
When darkness broods upon our darkened world."—*Dryden.*

"Gets him to rest, crammed with distressful bread."—*Henry v.*

