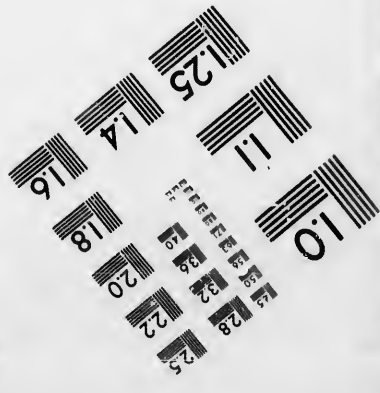
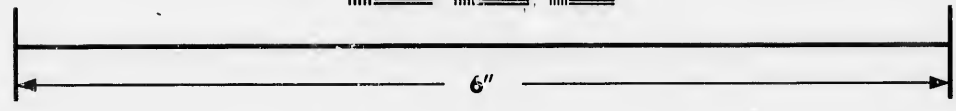
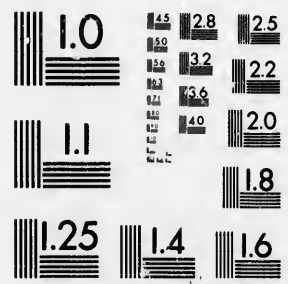


**IMAGE EVALUATION
TEST TARGET (MT-3)**



**Photographic
Sciences
Corporation**

23 WEST MAIN STREET
WEBSTER, N.Y. 14580
(716) 872-4503

25
28
32
36
40
22
20
18

**CIHM/ICMH
Microfiche
Series.**

**CIHM/ICMH
Collection de
microfiches.**



Canadian Institute for Historical Microreproductions / Institut canadien de microreproductions historiques

oi
57

© 1986

Technical and Bibliographic Notes/Notes techniques et bibliographiques

The Institute has attempted to obtain the best original copy available for filming. Features of this copy which may be bibliographically unique, which may alter any of the images in the reproduction, or which may significantly change the usual method of filming, are checked below.

L'Institut a microfilmé le meilleur exemplaire qu'il lui a été possible de se procurer. Les détails de cet exemplaire qui sont peut-être uniques du point de vue bibliographique, qui peuvent modifier une image reproduite, ou qui peuvent exiger une modification dans la méthode normale de filmage sont indiqués ci-dessous.

- Coloured covers/
Couverture de couleur
- Covers damaged/
Couverture endommagée
- Covers restored and/or laminated/
Couverture restaurée et/ou pelliculée
- Cover title missing/
Le titre de couverture manque
- Coloured maps/
Cartes géographiques en couleur
- Coloured ink (i.e. other than blue or black)/
Encre de couleur (i.e. autre que bleue ou noire)
- Coloured plates and/or illustrations/
Planches et/ou illustrations en couleur
- Bound with other material/
Relié avec d'autres documents
- Tight binding may cause shadows or distortion along interior margin/
La reliure serrée peut causer de l'ombre ou de la distorsion le long de la marge intérieure
- Blank leaves added during restoration may appear within the text. Whenever possible, these have been omitted from filming/
Il se peut que certaines pages blanches ajoutées lors d'une restauration apparaissent dans le texte, mais, lorsque cela était possible, ces pages n'ont pas été filmées.
- Additional comments:/
Commentaires supplémentaires:
- Coloured pages/
Pages de couleur
- Pages damaged/
Pages endommagées
- Pages restored and/or laminated/
Pages restaurées et/ou pelliculées
- Pages discoloured, stained or foxed/
Pages décolorées, tachetées ou piquées
- Pages detached/
Pages détachées
- Showthrough/
Transparence
- Quality of print varies/
Qualité inégale de l'impression
- Includes supplementary material/
Comprend du matériel supplémentaire
- Only edition available/
Seule édition disponible
- Pages wholly or partially obscured by errata slips, tissues, etc., have been refilmed to ensure the best possible image/
Les pages totalement ou partiellement obscurcies par un feuillet d'errata, une pelure, etc., ont été filmées à nouveau de façon à obtenir la meilleure image possible.

This item is filmed at the reduction ratio checked below/
Ce document est filmé au taux de réduction indiqué ci-dessous.

10X	14X	18X	22X	26X	30X
<input type="checkbox"/>	<input type="checkbox"/>	<input checked="" type="checkbox"/>	<input type="checkbox"/>	<input type="checkbox"/>	<input type="checkbox"/>
12X	16X	20X	24X	28X	32X

The copy filmed here has been reproduced thanks to the generosity of:

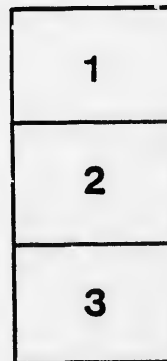
Archives of Ontario
Toronto

The images appearing here are the best quality possible considering the condition and legibility of the original copy and in keeping with the filming contract specifications.

Original copies in printed paper covers are filmed beginning with the front cover and ending on the last page with a printed or illustrated impression, or the back cover when appropriate. All other original copies are filmed beginning on the first page with a printed or illustrated impression, and ending on the last page with a printed or illustrated impression.

The last recorded frame on each microfiche shall contain the symbol \rightarrow (meaning "CONTINUED"), or the symbol ∇ (meaning "END"), whichever applies.

Maps, plates, charts, etc., may be filmed at different reduction ratios. Those too large to be entirely included in one exposure are filmed beginning in the upper left hand corner, left to right and top to bottom, as many frames as required. The following diagrams illustrate the method:



L'exemplaire filmé fut reproduit grâce à la générosité de:

Archives of Ontario
Toronto

Les images suivantes ont été reproduites avec le plus grand soin, compte tenu de la condition et de la netteté de l'exemplaire filmé, et en conformité avec les conditions du contrat de filmage.

Les exemplaires originaux dont la couverture en papier est imprimée sont filmés en commençant par le premier plat et en terminant soit par la dernière page qui comporte une empreinte d'impression ou d'illustration, soit par le second plat, selon le cas. Tous les autres exemplaires originaux sont filmés en commençant par la première page qui comporte une empreinte d'impression ou d'illustration et en terminant par la dernière page qui comporte une telle empreinte.

Un des symboles suivants apparaîtra sur la dernière image de chaque microfiche, selon le cas: le symbole \rightarrow signifie "A SUIVRE", le symbole ∇ signifie "FIN".

Les cartes, planches, tableaux, etc., peuvent être filmés à des taux de réduction différents. Lorsque le document est trop grand pour être reproduit en un seul cliché, il est filmé à partir de l'angle supérieur gauche, de gauche à droite, et de haut en bas, en prenant le nombre d'images nécessaire. Les diagrammes suivants illustrent la méthode.

ails
du
modifier
une
page

rrata
o

pelure,
n à

32X



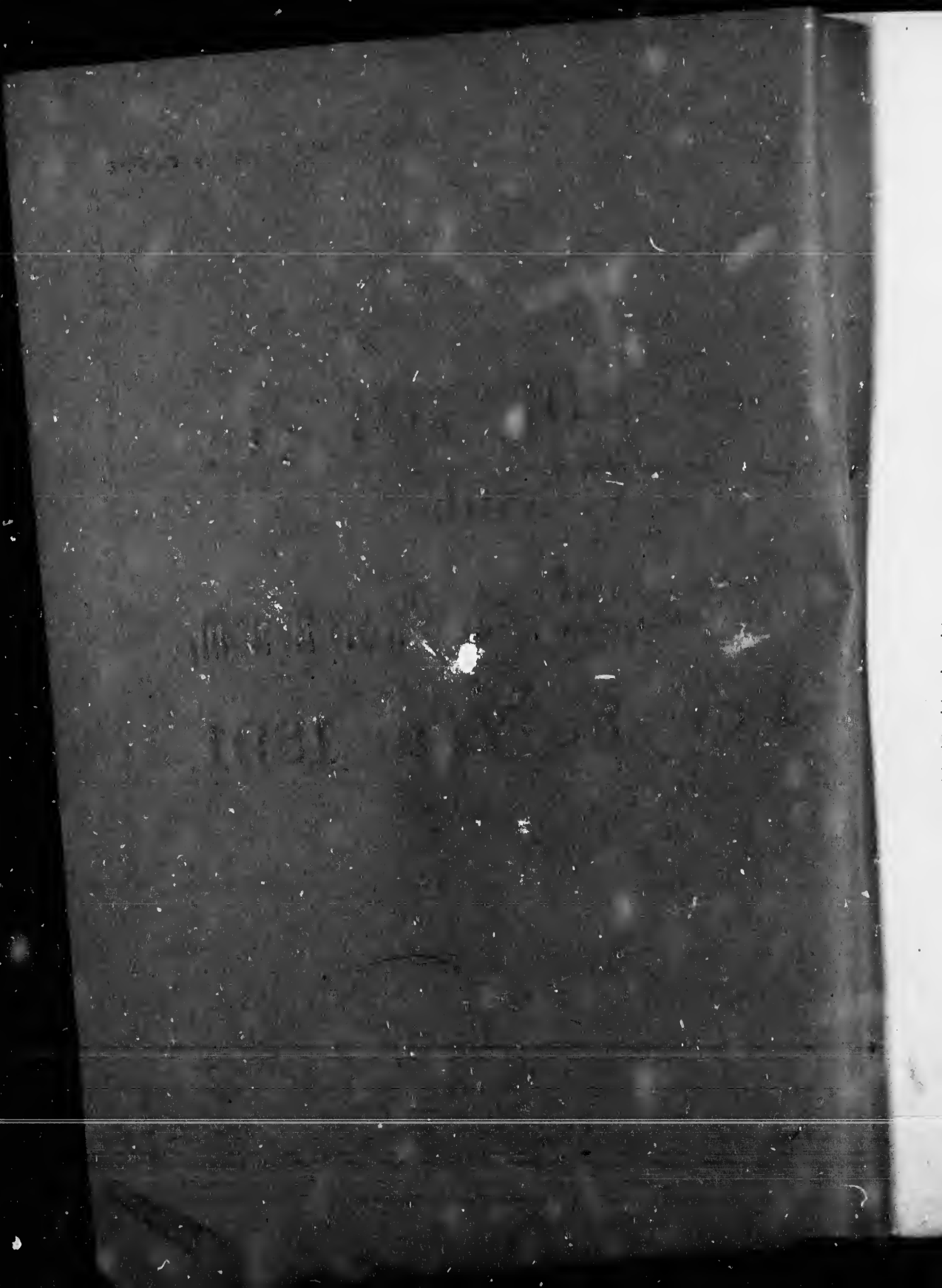
LIST OF VOTERS,
of the
Township of South Walsingham,
For the Year 1891.

TO PERSONS TO WHOM VOTERS' LISTS ARE SENT UNDER SECTION 6, CHAP. 9, OF THE CONSOLIDATED STATUTES ONT.

The Sheriff shall, immediately upon the receipt of his copies, cause one of them to be posted up in a conspicuous place in the Court House; and the Clerk of the Peace, upon the receipt of his copies, shall cause one of them to be posted in a conspicuous place in his office; and every Public and Seperate School Head Master, or Mistress, shall, in like manner, post up one of his or her copies on the door of the School house; and every Postmaster shall post up one of his copies in the Post Office.

LIST FIRST POSTED ON THE 9th DAY OF SEPT.

Port Rowan Printing Office.





SCHEDULE OF POST OFFICES.

1 Port Royal.	16 Dundas.
2 Port Rowan.	17 Jarvis.
3 St. Williams.	18 Tilsonburg.
4 Spring Arbor.	19 St. Thomas.
5 Rowen Mills.	20 Silyer Hill.
6 Walsingham Centre.	21 Langton.
7 Cultus.	22 Vienna.
8 Clear Creek.	23 Dundas.
9 Aylmer.	24 Forestville.
10 Toronto.	25 Port Ryersee.
11 Dutton.	26 Burford.
12 Simcoe.	27 Spring Vale.
13 Seattle. U. S.	28 Delhi.
14 Little Current.	29 Vittoria.
15 Leamington.	30 Dover.



**VOTERS' LIST 1891, MUNICIPALITY OF THE TOWNSHIP OF
SOUTH WALSINGHAM. COUNTY OF NORFOLK.**

PART I List of persons entitled to Vote at both Municipal Elections and
Elections to the Legislative Assembly.

POLLIN SUB-DIVISION No. 1 Comprising Lots 1, 2, 3, 4, 5 and 6, in
Concessions B, A, 1, 2, 3, 4 and the Gore,—Polling Place—, School
House, S. S. No. 2.

No. on Roll.	Name.	Juror	Lot.	Con.	F T H P O & M F	
8	Abbott, Peter	J	6	B	M F O	1
10	Abbott, John	J	6	B	M F O	1
11	Abbott, M. W.	J	6	B	M F O	1
12	Abbott, Jacob	J	6-7	B	M F O	1
21	Ashford, John	J	1-2	3	M F O	7
22	Ashford, Alfred	J	1-2	3	M F O	7
20	Arnup, Robert		1	4	M F T	7
18	Armour, William	J	2	4	M F O	7
23	Ashford, Chas.	J	2	3	M F O	8
24	Ashford, Chas. jr.	J	2	3	M F O	8
238	Anger, Peter		6	4	M F O	4
74	Brown, George	J	7	B	M F O	1
52	Biddle, Walter	J	3	2	M F O	5
53	Butcher, David	J	6	1	M F O	5
59	Butcher, Lundy	J	5	1	M F O	5
95	Benedict, John		1	1	M F O	7
96	Blumenstien, Martin	J	1	3	M F O	7
97	Blumenstien, John	J	1	3	M F O	7
98	Brissaux, Sylvester		1	2	M F O	5
99	Biddle, Daniel	J	4-5	2	M F O	5
100	Biddle, Edward	J	4-5	2	M F O	5
101	Biddle, John		5	2	M F O	5
102	Boughner, Ozias		2	A	M F O	8
103	Boughner, Henry	J	2	A	M F O	8

No. on Roll	Name.	Juror.	Lot.	Con.	F T H. & M F.	P O
104	Barron, John	J	2	A	M F O	8
105	Beeman, Isaac W.	J	3	A	M F O	8
519	Butcher, William	J	3	3	M F O	8
637	Bouck, Bruce	J	1	1	M F O	8
128	Countryman, Albert		5	3	M F O	1
142	Condon, Thomas		2	4	M F O	7
143	Cadogan, Alfred	J	1	A	M F O	8
185	Davis, W. W.	J	3	1-2	M F O	5
187	Dedrick, Jolin W.	J	3	A	M F O	5
188	Dedrick, Abram S.	J	3	A	M F O	5
219	Foster, Edward		6	A	M F O	1
220	Foster, Isaiah	J	6	A	M F O	1
222	Foster, Isaac		6	A	M F O	1
223	Foster, Elgin	J	6	A	M F O	1
225	Foster, Henry	J	5-6	B-A	M F O	1
226	Foster, Clinton	J	5-6	B-A	M F O	1
227	Foster, William	J	5-6	B-A	M F O	1
233	Furry, Abram		3	4	M F O	4
234	Furry, Samuel	J	3	4	M F O	4
235	Furry, Colin	J	3	4	M F O	4
236	Furry, William	J	3	4	M F O	4
237	Furry, Melvin	J	4	4-op	M F O	4
240	Franklin, Clintou	J	5	1	M F O	4
242	Fick, Isaac		2	1	M F O	8
243	Fick, Leander	J	2	1	M F O	8
244	Franklin, Austin	J	1	1	M F O	8
245	Franklin, Salem	J	1	A-B	M F O	8
246	Foster, Elias	J	5	A-B	M F O	8
247	Foster, Emerson	J	5	B	M F O	1
248	Foster, T. L.	J	5	B	M F O	1
249	Foster, Charles	J	2	B	M F O	1
250	Foster, Nelson	J	5-6	A	M F O	1
251	Foster, Freeman	J	5-6	B	M F O	1

OF

and

, in

ol

P O

1
1
1
1
7
7
7
7
8
8
4

1
5
5
5
7
7
7
5
5
5
5
8
8

P O	No. on roll	Name.	Juror.	Lot.	Con.	F T H. & M F.	P O
7	400	Moore, William	J	1	A	M F O	8
7	401	McDonald, Byron	J	3	A	M F O	8
5	402	McDonald, Delorme	J	1	A	M F O	8
5	404	Marlatt, John		6	2	M F O	5
1	403	Mculton, William	J	4	B	M F T	1
1	421	Overbaugh, Fredk.		6	A	M F O	5
1	425	Overbaugh, John		6	A	M F O	5
1	426	Overbaugh, Hesakiah		6	A	M F O	5
1	427	Overbaugh, Louis	J	4	A	M F O	5
1	430	Overbaugh, David	J	2	2	M F O	5
1	434	Overbaugh, Joel	J	1	2.3	M F O	5
	435	Overbaugh, Gideon	J	2	2	M F O	5
	436	Overbaugh, Chas.	J	2	2	M F O	5
	437	Overbaugh, William		4	1	M F O	5
5	438	Overbaugh, Emery	J	4	1	M F O	5
2	439	Overbaugh, Elgin	J	4	1	M F T	5
	440	Overbaugh, Thomas	J		gore	M F O	8
5	441	Pitman, Henry	J		gore	M F O	8
5	484	Pool, Nathaniel		6	2	M F O	5
5	496	Rohrer, Stephen	J	4	2	M F O	5
	497	Rohrer, Ireneus	J	4	2	M F O	5
	515	Robinson, Alph.		3	3	M F O	8
	516	Robinson, James		3	3	M F O	8
7	518	Roberts, Joseph	J	3	3	M F T	8
5	521	Rockafello, W. D.	J	3	1	M F O	5
5	522	Rockafello, Walter	J	4	2	M F O	5
8	523	Rockafello, Corneleus	J	3	1	M F O	5
8	524	Roberts, Andrew	J	6	3	M F T	5
8	527	Skuse, Henry	J	1	B	M F T	8
8	528	Skuse, Fredk.	J	1	B	M F T	8
5	580	Smith, Thomas	J	2	1	M F T	8
5	581	Smith, William	J	2	1	M F T	8
5	241	Spencer, C. B.	J	5	1	M F T	5

No. on Roll.	Name.	Juror	Lot.	Con.	F T H & M F	P O
600	Tait, George	J	1	2	M F T	7
615	Underhill, Lt.	J	1	1	M F T	6
616	Underhill, Chas.		5	2	M F O	5
497	Woolv. n, William		4	1	M F T	5
635	Weaver, Wm.	J	5	3	M F O	4
636	Willis, Arthur	J	1	1	M F O	8
637	Willis, Edgerton	J	1	1	M F T	8



PART II.--List of persons entitled to Vote at Municipal Elections only.

No. on Roll	Name.	Juror	Lot.	Con.	O T	P O
20	Blumenstien, Jacob		1	4	O	8
50	Burton, Fredk.		2	4	O	8
528	Becker, Anesley		1	B	O	18
403	Cartwright, Warren		5	B	O	3
290	Demery, John		2	4	O	7
396	Mansfield, Mrs.			gore	O	5
338	Mitchner, Simeon			gore	O	8
421	Newman, Mrs. A.		5	2	O	5
524	Pretty George		6	3	O	5
517	Raymond, Thomas			gore	O	18
582	Simes, Edward		2	A	O	8
571	Swarts, Mrs.		6	2	O	5

**PART III—List of Persons entitled to Vote at Elections for Members of the
Legislative Assembly only.**

No. on Roll	Name.	Lot.	Con.	M F	P O
106	Boughner, Angus	4	A	M F	8
525	Russell, Delmer	5	1	M F	5
526	Russell, Mitchell	5	1	M F	5
529	Smith, Chas.	5	3	M F	5
617	Underhill, Thomas	4	2	M F	5

.....
Total number of Votes—145 Jurors—89.



VO

PAR.

POLLI

in Co

A & B

lag

No. on
Roll.

6

25

26

27

28

29

31

33

34

35

36

37

43

44

56

77

78

79

80

81

82

VOTERS' LIST 1891, MUNICIPALITY OF THE TOWNSHIP OF SOUTH WALSHINGHAM. COUNTY OF NORFOLK.

PAR. I List of persons entitled to Vote at both Municipal Elections and Elections to the Legislative Assembly.

POLLIN SUB-DIVISION No. 2 Comprising Lots 7, 8, 9, 10, 11, 12, and 13, in Concessions 2, 3 and 4 Lots 7, 8, 9, 10, 11, 12 13, 14, in Concessions A & B; and all of Lots 14, 15, 16, 17. in Con, A, not include d in the Vil lage of Port Rowan—Polling Place.—the Plank road School House.

No. on Roll.	Name.	Inter	Lot.	Con.	F T H F O & M F	F O
6	Anderson, H. W.	J	10	A	M F O	1
25	Anger, George	J	11	3	M F O	6
26	Anger Byron	J	10	3	M F O	6
27	Anguish, Jacob		9	3	M F O	6
28	Anguish, Daniel	J	9	3	M F O	6
29	Anguish, Gilbert	J	9	4	M F T	6
31	Bouck, Austin	J	10	2	M F O	5
33	Breadon, John	J	9	2	M F O	5
34	Brown, Peter	J	9	1	M F O	5
35	Brown, Ernest		9	1	M F O	5
36	Brown, Willard	J	8	2	M F O	5
37	Brown, Victor	J	8	2	M F O	5
43	Brown, Albert	J	13	1	M F T	5
44	Brown, Emerson	J	14	A	M F O	5
56	Becker, Henry		9	1	M F O	5
77	Brown, Henry	J	8	B	M F O	1
78	Brown, James	J	8	B	M F O	1
79	Barrett, M. W.		9	B	M F O	1
80	Barrett, Arthur	J	9	B	M F O	1
81	Brown, Morris	J	9	B	M F O	1
82	Brown, William	J	9	B	M F O	1

Ro. on Roll	Name.	Juror	Lot	Con	F T H & M F	P O
108	Bishoprick, O.	J	7	1	M F O	6
551	Bissstt, George	J	13	4	M F T	6
126	Countryman, Abram		9	A	M F O	1
127	Countryman, Arnot	J	9	A	M F O	1
129	Countryman, John	J	8	B	M F O	1
148	Dedrick, George	J	15	1	M F O	5
151	Dedrick, Thomas		15	A	M F O	5
152	Dedrick, Chas. A.	J	15	A	M F O	5
153	Dedrick, Austin	J	14	A	M F O	5
161	Dedrick, James W.	J	13	A	M F O	5
162	Dedrick, George A.	J	13	A	M F O	5
168	De Witt, Edgar	J	11	B	M F O	1
193	Forsythe, James	J	8	3	M F T	6
194	Forsythe, Ezekiel		10	4	M F O	6
195	Forsythe, Daniel		10	4	M F O	6
195	Franklin, Harvey	J	14	1	M F O	5
198	Franklin, Wm.		14	1	M F O	5
199	Franklin, Elsworth	J	10	1	M F O	5
201	Franklin, Wilham		7-8	1	M F O	5
202	Franklin, Wm. jr.	J	14	1	M F T	5
207	Fick, Israel	J	10	B	M F O	1
208	Fick, William		10	B	M F O	1
209	Fick, Artly		10	B	M F O	1
213	Frankln, James	J	12	1	M F O	5
214	Franklin, Nelson		14	1	M F O	5
215	Franklin, Alexander	J	13	3	M F O	5
218	Finch, Jefferson	J	11-12	A	M F O	1
224	Fach, Fredk	J	11	3	M F O	6
228	Fick, Peter F.	J	10	B	M F O	1
239	Farr, Peter		7	4	M F O	4
355	Gammage, Wm.	J	8	2	M F O	5
353	Gingle, Thomas	J	11	2	M F O	5
356	Gehart, John	J	13	4	M F O	6

H F O T	P O	No. on Roll	Name.	Juror.	Lot.	Con.	F T H. & M F.	P O
	6	363	Hunter, Ira	J	7	1	M F O	5
	6	364	Hutchinson, George	J	10	1	M F O	2
		265	Hazan, Abima		12	A	M F O	2
		266	Hutchinson, Edw.		13	2	M F O	2
		267	Hodgins, Samuel		13	2	M F O	2
O	1	268	Haltum, George		13	4	M F O	6
O	1	268	Hutchinson, James	J	12	4	M F O	6
		270	Harris, James	J	14	2	M F T	2
		272	Hutchins, Peter	J	12	A	M F T	2
		273	Howe, Joseph	J	8	A	M F T	1
		289	Hendershott, Jacob		8	4	M F T	4
	5	193	Higgins, Arthur		8	3	M F O	4
O	5							
O	5							
O	5							
O	5	312	Leedham, George	J	7-8	1	M F T	5
O	5	313	Lampkin, John		7	2	M F O	5
O	1	314	Lampkin, W. H.	J	7	2	M F O	5
		317	Leighfield, Wm.	J	12	B	M F O	1
		318	Leighfield, George	J	12	B	M F T	1
T	6	319	Lefort-ne, Colin		10	B	M F T	1
O	6	320	Louch, Henry		10	B	M F T	1
O	6	322	Lefortune. Francis	J	8	B	M F O	1
O	5	341	Loucks, Jacob		10	3	M F O	6
O	5	342	Loucks, Chas.		3	3	M F O	6
O	5	343	Loucks, Jonas	J	3	3 op	M F O	6
O	5	344	Loucks, Andrew	J	7	3-op	M P O	6
O	5	345	Loucks, Geo. E.	J	7	3-op	M F O	6
O	1	346	Loucks, Richard	J	7	3-op	M F O	6
O	1							
O	5	349	Moss, Daniel	J	7-8	A	M F O	2
O	5	350	Moss, William	J	7-8	A	M F O	2
O	5	351	Moss, William jr.		7-8	A	M F fs	2
O	1	352	Morton, Edwin	J	9	2	M F O	2
O	6	353	Miller, Edward	J	7	A	M F O	1
O	1	365	McKay, James		9	4	M F O	4
O	4	375	McCrimmon, L. A.	J	10	B	M F O	1
		384	Moore, John W.	J	12	3	M F O	2
		385	Moore, Henry E.		12	3	M F O	2
O	5	386	Moore, Alexander	J	12	3	M F O	2
O	5	387	Mudford, Edward	J	13	3	M F O	6
O	6	388	McCall, Arthur F.	J	13	A	M F O	2

No. on Roll	Name.	Juror	Lot	Con	F T H & M F	P O
413	North, Robert	J	12	A	M F T	2
422	Overbaugh, Ithamer		8	A	M F O	2
422	Oltz, William		13	B	M F O	6
423	Osborne, Henry		7	B	M F O	1
428	Osterhote, Thomas	J	12	1	M F O	2
429	Osterhote, Ira	J	12	1	M F O	2
444	Pitman, Job	J	14	A	M F O	2
445	Price, Dayton		14	A	M F O	2
447	Procunier, Henry		10	B	M F O	1
461	Price, Elwin		12	A	M F O	2
462	Procuier, J. W.		8	B	M F O	1
463	Procunier, H. E.	J	8	B	M F O	1
464	Procunier, Edward	J	8	B	M F O	1
467	Procunier, Henry,	J	10	B	M F T	1
482	Procunier, Clinton		11 to 15	B C M	M F O	1
452	Pitman, Geo. A.		17		M F T	2
488	Raymond, Wm.	J	15	1	M F T	2
491	Rockafello, Allen	J	10.11	1-A	M F O	2
492	Rockafello, Rolph C.	J	10	A	M F O	2
493	Rockafello, Ansley	J	10	A	M F O	2
494	Rockafello, Lundy	J	10	A	M F O	2
498	Rehrer, Alexander	J	15	A	M F O	2
502	Rockafello, Rolph	J	13	A	M F O	2
503	Russell, Samuel		13	A	M F T	2
504	Rynner, Thomas.		10	B	M F O	1
229	Raymond, Nathaniel	J	10	B	M F T	1
537	Shemmel, Henry	J	10	2	M F O	2
541	Spencer, C. B.	J	11	B	M F O	1
543	Snivelley, Abram		10	B	M F O	1
544	Snivelley, Joseph	J	10	B	M F O	1
545	Spencer, DeWitt		10	B	M F O	1
546	Spencer, Denis		10	B	M F O	1
575	Smith, Louis		10	4	M F O	4

PART II.—List of persons entitled to Vote at Municipal Elections only.

No. on Roll	Name.	Juror	Lot.	Con.	O T	P O
590	Becker, Jas. M.		12	1	O	26
489	Backhouse, Miss Ida		16	1	O	2
146	Collett, John		14	mars'	O	2
452	Carey, Rev.		17	A	O	2
144	Cron, James		4	5	O	16
488	Dease, James A.		15	1	O	2
160	Davies, John		14	A	O	15
154	Dedrick, Charles		14	A	O	2
155	Dedrick, John		14	A	O	2
156	Dedrick, Mrs. Calista		15	A	O	2
157	Dedrick, Miss Minnie		15	A	O	2
158	Dedrick, Elizebeth		15	A	O	2
499	Dedrick, Emma		15	A	O	2
500	Dedrick, Mary		15	A	O	2
501	Dedrick, Amelia		15	A	O	2
191	Ellis, Henry		15	A	O	2
192	Ellis, Joseph		11	11	O	2
200	Franklin, Mrs A.		10	10	O	2
261	Gregory, Mrs. L. C.		7	4	O	4
854	Hutchinson, Mrs A.		11	1	O	2
554	Hutchinson, Mrs L.		12	1	O	2
807	Killmaster, C. S.		11	A	O	2
272	Mabee, Mrs N.		12	A	O	2

**VOTERS' LIST 1891, MUNICIPALITY OF THE TOWNSHIP OF
SOUTH WALSINGHAM. COUNTY OF NORFOLK.**

**Part I List of persons entitled to Vote at both Municipal Elections and
Elections to the Legislative Assembly.**

**POLLING SUB-DIVISION No. 3 Comprising all of Concessions 5 & 6, Polling
Place—Town Hall, Walsingham Centre.**

No. on Roll	Name.	Juror	Lot	Con	F T H & M F	P O
13	Anger, Henry	J	17	5	M F O	6
14	Andrews, Richard	J	11	5	M F O	6
15	Ashford, James		3	6	M F O	7
16	Ashford, James jr.		3	6	M F O	7
17	Andress, George		1	6	M F O	7
18	Armour, Edward		2	5	M F O	7
90	Armstrong, Thomas		19	6	M F O	6
49	Bennett, Aaron	J	24	6	M F O	3
51	Berry, James	J	4	5	M F O	4
83	Byerly, Thomas		15	5	M F O	6
84	Byerly, Andrew	J	15	5	M F O	6
85	Burger, Aaron		17	5	M F O	6
87	Beckett, Samuel		13	5	M F O	6
88	Bennett, Philo		12	3	M F O	6
90	Brandow, Wm. R.		13	5	M F O	6
91	Bronson, Clark		19	6	M F O	6
93	Brandow, Judson	J	11	5	M P O	4
94	Boughton, George		6.7	5-6	M F O	4
133	Cline, James	J	14	5	M F O	6
134	Cook, Jonah	J	13	6	M F O	6
135	Campbell, W. J.		12	5	M F T	6

No. on Roll.	Name.	Juror	Lot.	Con.	F T H & M F	P O
136	Christmas, George	J	18	6	M F O	6
137	Christmas, Austin	J	13	6	M F O	6
138	Christmas, Lawrence		13	6	M F O	6
139	Clubine, Edward		13	5	M E O	6
140	Cox, Edward	J	12	5	M F O	6
175	Dell, Geo. W. B.		24	5	M F O	3
176	Darley, George		17	5	M F O	6
177	Darley, Mark		17	5	M F O	6
178	Dalton, F. W.	J	18	6	M F O	6
180	Dease, J. H. Cameron		13	5	M F O	6
181	Day, John		12	6	M F O	6
182	Dair, Samuel	J	10	6	M F ₂ T	6
184	Dailey, Leonard	J	9	5	M F O	6
198	Everett, James	J	24	5	M F O	3
232	Fletcher, Donald		13	5	M F O	6
238	Furry, Alfred	J	3	6	M F O	4
257	Gibbon, William	J	7	6	M F O	6
258	Garner, Jacob	J	6	6	M F O	6
259	Gregory, Charles		8	5	M F O	3
260	Greggs, Edward		2	5	M F O	7
260	Hawley, Nathaniel		13	5	M F O	6
281	Hitchcock, Stephen		9	6	M F O	6
284	Hepburn, W. M.		9	5	M F O	4
285	Hutchinson, Chas.		10-11	5	M F O	6
286	Hazen Eugene		10	5	M F O	4
287	Hazen, Robert		10	5	M F O	4
288	Hazen, H. Wilk.		10	5	M F O	4
278	Halliday, Stephen		22	5	M F O	3

No. on Roll	Name.	Juror.	Lot.	Con	F T H. & M F.	P O
299	Jemerson, Hugh		18	5	M F O	6
300	Johnson, James		7	5	M F O	4
301	Johnson, Andrbson	J	7	5	M F T	4
307	Jenny, William		1	5	M F O	7
309	Kincade, Robert		12	5	M F O	6
310	Kriss, George	J	10	5	M F T	4
223	Laymon, Thomas		17	6	M F O	6
224	Laymon, J. L.	J	17	6	M F O	6
325	Lafortune, Louis		14	6	M F O	6
326	Lafortune, Fredk.		14	6	M F O	6
328	Lees, William		13	6	M F O	6
329	Lees, Charles		13	6	M F O	6
330	Leighfield, David	J	9.8	6	M F O	6
331	Leighfield, Andrew		10	6	M F O	6
332	Leighfield, John		10	6	M F O	6
333	Lelond, Samuel	J	9	6	M F O	6
334	Lelond William		9	6	M E O	6
335	Latham, W. C.		1	6	M F O	7
349	Lees, William	J	13	5	M F O	6
348	Loree. J. B.		13	5	M F T	6
360	Morgan, William	J	13	5	M F O	6
359	Miller, Stephn		13	5	M F O	6
362	Morse, W. O.	J	13	5op	M F O	6
363	McIntosh, Alexr.		11	6	M F O	6
366	Morick, Wm,	J	2	5	M F O	7
367	Morick, Wilhelm		2	5	M E O	7
368	Moffatt, John	J	1	6	M F O	7
369	Morick. Aaron	J	2	5.6	M F O	7
389	McKay, D. C.	J	18	6	M F O	6
390	Moore, Calvin J.		2	5	M F O	4
405	Muir, Robert		13	5	M F O	6
420	Nichol, George	J	2	6	M F O	7

P O	No. on Roll	Name.	Juror	Lot	Con	F T H & M F	P O
6	465	Proper, Samul		14	5	M F O	6
4	466	Patton, Lewis		7	5	M F O	4
4	476	Patterson, Anderson		13,14	6	M F O	6
7	477	Patterson, Wellington	J	13-14	6	M F O	6
	478	Proper, John C.		14	5	M F O	6
	479	Proper, W. H.		14	5	M F O	6
	480	Poronto, Michael		12	5	M F O	6
6	482	Proper, John		14	5	M F O	6
4	485	Perie, George		13	5	M F O	6
	487	Phelan, John		13	5	M F O	6
6							
6							
6							
6	511	Ribble, W. H.		13	5	M F O	6
6	513	Rush, Robert	J	5	5	M F O	4
6	510	Robins. George		15	5	M F O	6
6							
6							
6							
6	530	Smith, Oliver		5	5	M F T	6
6	531	Smith, Samuel	J	13	5	M F T	6
6	564	Simons, Edward		12	5	M F O	6
7	565	Smith, Samuel		13	5	M F O	6
6	566	Simes, Theodore		13	6	M F O	6
6	668	Summerhays, Fred.	J	13	6	M F T	6
	669	Summerhays, James	J	13	6	M F T	6
	670	Spore, E. Ler A.		13	5	M F T	6
	671	Smith, Alf.		6	5	M F T	6
6	672	Smith, Henry	J	12	5	M F O	6
6	676	Smith, Wm.		4	6	M F O	21
6	677	Smith, Chas. O.		4	6	M F O	6
7							
7							
7							
6	595	Terry, Henry	J	12	5	M P O	6
6	597	Townsend, John	J	13	5	M F O	6
4	598	Townsend, Arthur	J	13	5	M F O	6
6	567	Tester, Ernest		13	6	M F O	6
7							
	614	Underhill, John		15	5	M F O	6

No. on Roll	Name.	Juror	Lot	Con	F T H & M F	P O
621	Watts, Benjamin		21	5	M F O	3
627	Wingrove, George		18	6	M F O	6
628	Wingrove, Whitfield	J	13	6	M F O	6
629	Wingrove, Wallace		17	5	M F O	5
330	Wingrove, Alonzo	J	17	6	M F O	6
632	Wingrove, John		13	6	M F O	6
633	Wilson, Thomas		8	6	M F T	6
634	Wood, George	J	1	5	M P O	7
635	Wheeler, Henry		13-16	5-6	M F O	6
636	Wheeler, A. H.	J	13-16	5-6	M F O	6
641	Yocom, Jacob		16	5	M F O	6
642	Yocom, William	J	16	5	M F O	6

PART II.—List of persons entitled to Vote at Municipal Elections only.

No. on Roll	Name.	Juror	Lot.	Con.	O T	P O
89	Bennett, Anna		13	6	O	6
144	Crew, James		4	5	O	16
179	DeVoll, Mrs.		13	5	O	6
188	Huson, William		10	6	O	17
277	Hazen, Jacob W.		11	6	O	18
279	Hutchinson, John		13	6	O	18
280	Hawley, William		13	5	O	5
146	Landon, Zeb.		23	6	O	12
147	Lane Nathaniel		6	6	O	19
536	Marshall, Thomas		2	6	O	7
369	Nichol, James		5	5	O	29

No. on Roll	Name.	Juror	Lot.	Con.	O T	P O
135	Procunier, E. M.		13	5	O	27
362	Pirie, George jr.		18	5	O	6
502	Richards, Mrs M.		24	6	O	8
509	Rodgers, James		24	6	O	20
310	Stenebangh. R. J.		10	5	O	
599	Townsend, Mrs. V.		7	5	O	4
568	Wood, Darius		13	6	O	12
681	Wingrove, Wilber		18	5	O	6
683	Williams, W. W.		8	6	O	6

PART III—List of Persons entitled to Vote at Elections for Members of the Legislative Assembly only.

No. on Roll	Name.	Lot.	Con.	M F	P O
364	McIntosh, George	11	6	M F	6
486	Phelan, C. W.	13	5	M F	6
643	Yocom, C. D.	16	5	M F	6

Total number of Votes—146 Jurors—45



**VOTERS' LIST 1891, MUNICIPALITY OF THE TOWNSHIP OF
SOUTH WALSINGHAM, COUNTY OF NORFOLK.**

**Part I List of persons entitled to Vote at both Municipal Elections and
Elections to the Legislative Assembly.**

POLLING SUB-DIVISION No. 4 Comprising Lots 14, 15, 16, 17, 18, 19, 20,
21, 23, 23, 24 in Concessions 2, 3, and 4; Lots 16, 17, 18, 19, 20, 21, 22
23, 24, in Concession 1; and all of 18, in Concession 1 not included in the
Village of Port Rowan, and all of Long Point. Polling Place—Union
School house School Section No. 6.

No. on Poll	Name.	Juror.	Lot.	Con.	F T H. & M F.	P O
1	Aker, Hugh	J	20	1	M F O	2
3	Aker, Arthur		24	2	M F O	3
5	Ayres, George		22	3	M F O	3
68	Brandow, Wm A.		14	3	M F T	5
30	Brown, Albert	J	22	1	M F T	2
38	Boyington, George		17	2	M F T	2
39	Boyington, John	J	17	2	M F T	2
40	Brandow, Abram		19	3	M F T	2
42	Boyington, Joseph		18	2	M F T	2
45	Becker, James	J	21	1	M F O	2
47	Brown, Isaac	J	19-20	1	M P O	2
53	Brandow, Thomas		22	2	M F O	3
54	Brown, Louis		22	1	M F O	3
60	Backhouse, John H.		17	2-op	M F O	2
61	Backhouse, John C.	J	17	2-op	M F O	2
64	Brandow, Charles	J	18	2	M F O	2
65	Brandow, Herbert	J	18	2	M F O	2
66	Berringer, Harrison		24	1	M F T	3

No. on Roll.	Name.	Juror	Lot.	Con.	F T H & M F	P O
69	Brown, Isaiah		17	4	M E O	2
70	Brown, Peter		21	2	M F O	3
71	Brown, George	J	21	2	M F O	3
72	Baldwin, Albert	J	23	3	M F O	3
73	Bennett, Henry	J	23	2	M F O	3
75	Backhouse, Peter	J	17	1	M F O	2
76	Barrett, H M.	J	16	1	M F O	2
108	Cridland, Robert	J	19	2	M F O	2
109	Cridland, George	J	18-19	1	M F T	2
110	Cronk, Joseph W.		16	3	M F O	2
112	Chamberlin, Fredk.		16	3	M F O	2
113	Cronk, Jacob H.		16	3	M F O	2
114	Chamberlin, John	J	20	1	M F T	2
115	Clemence, John	J	21	1	M F O	2
118	Cridland, Frank	J	22	11	M F O	3
119	Cope, Thomas	J	24	1	M F O	3
122	Cope, John	J	24	2	M F O	3
123	Catherwood, Robert	J	19-20	3	M F T	3
124	Catherwood, Thomas	J	19-20	3	M F T	3
125	Catherwood, Andrew		19-20	3	M F T	3
130	Crandell, John		22	4	M F T	3
131	Carl, George		17-18	4	M F T	6
164	Dickinson, W. E.	J	21	1	M E O	2
165	Dickinson, Edwd.	J	21	1	M F O	2
166	Denny, William		24	2	M F T	3
170	Dease, Brown		24	1	M F O	3
189	Evans, Richard		15	3	M F O	2
190	Evans, Francis R.	J	15	3	M F O	2
196	Finch, Peter		20	1	M E O	1
205	Fick, Stephen	J	19-20	2	M F T	2
210	Fick, Quinton	J	18	1	M F T	2
230	Ferris, George	J	21	4	M F O	3
231	Ferris, William	J	23	4	M F O	3
217	Ferris, W. P.		Long	Pt	M F O	2
112	Fishett Abram		24	1	M F O	2

P OF

ns an

9, 20.

21, 22

at 13

nion

P O

2

3

3

5

2

2

2

2

2

2

3

3

2

2

2

3

No. on Roll	Name.	Juror	Lot	Con	F T H & M F	P O
252	Gerhert, John		21	2	M F T	3
262	Holt, S. N.		16	1	M F O	2
271	Hathway, Thos.		22	2	M F O	3
274	Hutchinson. A. O.	J	15	2	M F O	2
315	Laymon, Frank	J	18	3	M F T	2
316	Laymon, Eph.		18	3	M F T	2
321	Lemon, Chas.		24	2	M F T	3
211	Moore, Ebenezer	J	18	1	M F T	2
41	Moulton, Asa		19	3	M F T	2
354	Moulton, Andrew	J	19	4	M F O	2
355	Moulton, John	J	19	4	M F O	2
356	Myers, John	J	21	4	M F O	3
357	Myers, W. H.		22 ^{op}	4	M F O	3
358	Myers, Arthur	J	22	3	M F O	3
373	McDonald, Wallan		17	2	M F T	2
374	McDonald, Chas,		19	2	M F T	2
378	McKinnon, Lachlin		24	2	M F O	3
379	McCall, Andrew	J	24	1	M F O	3
380	McDonald, John		24	1	M F O	3
381	McDonald, John A.		24	1	M F O	3
382	McDonald, Warren		24	1	M F O	3
383	Mayo, Robert		16	1	M F T	2
407	Newkirk, Nathaniel		22	2	M F O	3
409	Newkirk, John		22	3	M F O	3
411	Newkirk, Abram		16	3	M F O	2
414	Newman, Frank		24	1	M F O	3
415	Newman, Geo. W.		24	1	M F O	3
417	Newman, Matthew	J	22	3	M F O	3
418	Newman, Philip		22	3	M F O	3
431	Oaks, Wilfred	J	23	2	M F O	3

No. on Roll.	Name.	Juror	Lot.	Con.	F T H & M F	P O
442	Proctor, W. J.	J	16	2-3	M F O	2
443	Pretty, James		16	3	M F H	2
448	Price, Walter		24	1	M F T	3
449	Procnier, David		24	1	M F O	3
450	Price, Geo. W.		24	1	M F O	3
451	Pearsall, Frank	J	24	1	M F O	2
453	Price, Joseph E.	J	24	3	M F T	3
455	Price, J. DeWitt	J	24	3	M F O	3
456	Price, Stephen	J	24	2	M F O	3
459	Price, W. G.		24	2	M F O	3
469	Ponting, George		18	4	M F O	2
470	Ponting, George jr.	J	18	4	M F O	2
471	Price, James	J	24	3-6	M F O	3
472	Price, John	J	24	3-6	M F O	3
473	Price, Lewis	J	24	3-6	M F O	3
507	Reynolds, William	J	14	3	M F O	2
508	Reeves, Avilah		24	2	M F O	3
275	Shew, Nathaniel		15	2	M F T	2
276	Shaw, Ithamer	J	15	2	M F T	2
532	Smith, William	J	19	2	M F O	2
533	Smith, Eugene	J	20op	1	M F O	2
534	Smith, Culver	J	20op	1	M F O	2
535	Smith, Benjamin		20op	1	M F O	2
536	Swick, John		19	3	M F T	2
547	Smith, George		19	1	M F O	2
548	Smith, W. B.	J	19	1	M F O	2
554	Smith, Thos. H.	J	21	3	M F O	2
555	Smith, Thomas		21	3	M F O	2
556	Smith, Daniel		18	4	M P O	2
557	Smith, Henry		18	4	M F O	2
558	Stirling, Thomas	J	19-20	3	M F T	3
559	Stirling, Edward	J	19-20	3	M F T	3
560	Shoup, Aaron	J	22	4	M F O	3
561	Shoup, Christian	J	21	4	M F O	3
562	Sherman, John		18	4	M F O	6
574	Secord, Frank	J	23	4	M F T	3

No. on Roll	Name.	Juror	Lot	Con	F T H & M F	P O
591	Tolan, John		24	1	M F T	3
594	Terhune, Edward		21	4	M F T	3
613	Unger, Louis		24	4	M F O	3
607	Williams, Isaac	J	18	J	M F O	3
608	Williams, Chas.	J	18	1	M F O	3
609	Woodward, Edwin	J	23	1	M F O	3
610	Woodward, Hallum	J	24	2-1	M F O	2
610	Woodward, Henry		24	1-2	M F O	2
610	Woodward, H. H.		24	1-2	M F O	3
622	Watts, Jas. R.	J	21	4	M F O	3
623	Watts, John	J	23	3	M F O	3
624	Watts, George	J	20	4	M F O	3
625	Winkworth, John	J	14	4	M F O	3
626	Winkworth, William	J	14	4	M F O	3
54	Wardell, Walter		22	2	M F O	3

PART II.—List of persons entitled to Vote at Municipal Elections only.

No. on Roll	Name.	Juror	Lot.	Con.	O T	P O
2	Amesberry, Mrs M.		24	1	O	3
4	Andress, Mrs Lucretia		21	3	O	3
62	Backhouse, Miss M.		18	3	O	2
315	Backhouse, Albert		18	3	O	9
117	Brown, Isaiah		22	1	O	2
118	Becker, Jonathan		21	1	O	2
533	Brandow, S. A.		20	1	O	2
121	Cope, Fredk.		23	3	O	3
120	Cope, Mrs Victoria		24	1	O	3
170	Davis, Jerome		16	4	T	2
173	Dedrick, T. B.		21	2	O	2
174	Dedrick, J. B.		21	2	O	2
169	Dease, Mrs N.		24	1	O	3
609	Hutchinson, Marilla		23	1	O	3
123	Killmaster, H. J.		19-20	3	O	2
67	McCall, Miss M.		24	2	O	2
120	McCall, James		24	1	O	2
376	McCall, W. T.		20	4	O	3
377	McCall, D. A.		22-op	2	O	3
448	Mulkins, Alfred		24	1	O	3
408	Newkirk, Mrs C.		22	2	O	3
416	Nevitt, William		24-op	2	O	3

No. on Roll	Name.	Lot.	Con.	O T	P O
454	Price, Mrs H. A.	24	3	O	3
459	Price, Peter	24	2	O	3
460	Price, George	24	2	O	3
482	Perkins, Foley	24	4	O	30
474	Price, Malinda	24	3	O	3
454	Price, Melissa	24	3	O	3
495	Price, Mary	24	3	O	3
42	Richardson, R.	18	2	O	2
130	Soveroen, S. N.	17-18	4	O	12
206	Stearns, William	19-20	2	O	2
215	Smith, Edgar	19	1	O	2
210	Scarth, Wm.	18	1	O	2
563	Schram, Mr C.	18	5	O	6
460	Tisdale, Mrs S. J.	24	2	O	3
592	Thorald, Wm.	24	2	O	3
130	VanWagoner, Louis	22	4	O	3
116	Woodward, D.	20	1	O	3
170	Williams, Nelson	16	4	O	2
608	Williams, Titus	18	1	O	2
166	Willard, Mrs A.	24	2	O	3

PART III—List of Persons entitled to Vote at Elections for Members of the
Legislative Assembly only.

No on Roll	Name.	Juror	Lot.	Con.	M F	P O
63	Backhouse, John D.		12	2	M F	2
168	Denny, Robert		24	2	M F	3
216	Ferre, Curtis		17	1	M F	2
00	Finch, Peter		20	1	M F	3

Total No. of Voters,—186.

Total No. of Jurors,—69.

I, John Phelan, Clerk of the Municipality of South Walsingham, in the County of Norfolk, do hereby certify that Parts one and three of the within list constitute a correct list for the year 1891 of all persons appearing by the last revised Assessment Roll of the said Municipality, to be entitled to vote at Elections for Members of the Legislative Assembly; and that parts one and two constitute a correct list, for said year of all persons appearing by the said Roll to be entitled to vote at Municipal Elections in said Municipality; and I hereby call upon all Electors to examine the said list, and if any omissions or other errors are perceived therein, to take immediate proceedings to have the said errors corrected according to law.

John Phelan, Tp. Clerk,

Dated this 9th day of Sept., 1891.

