

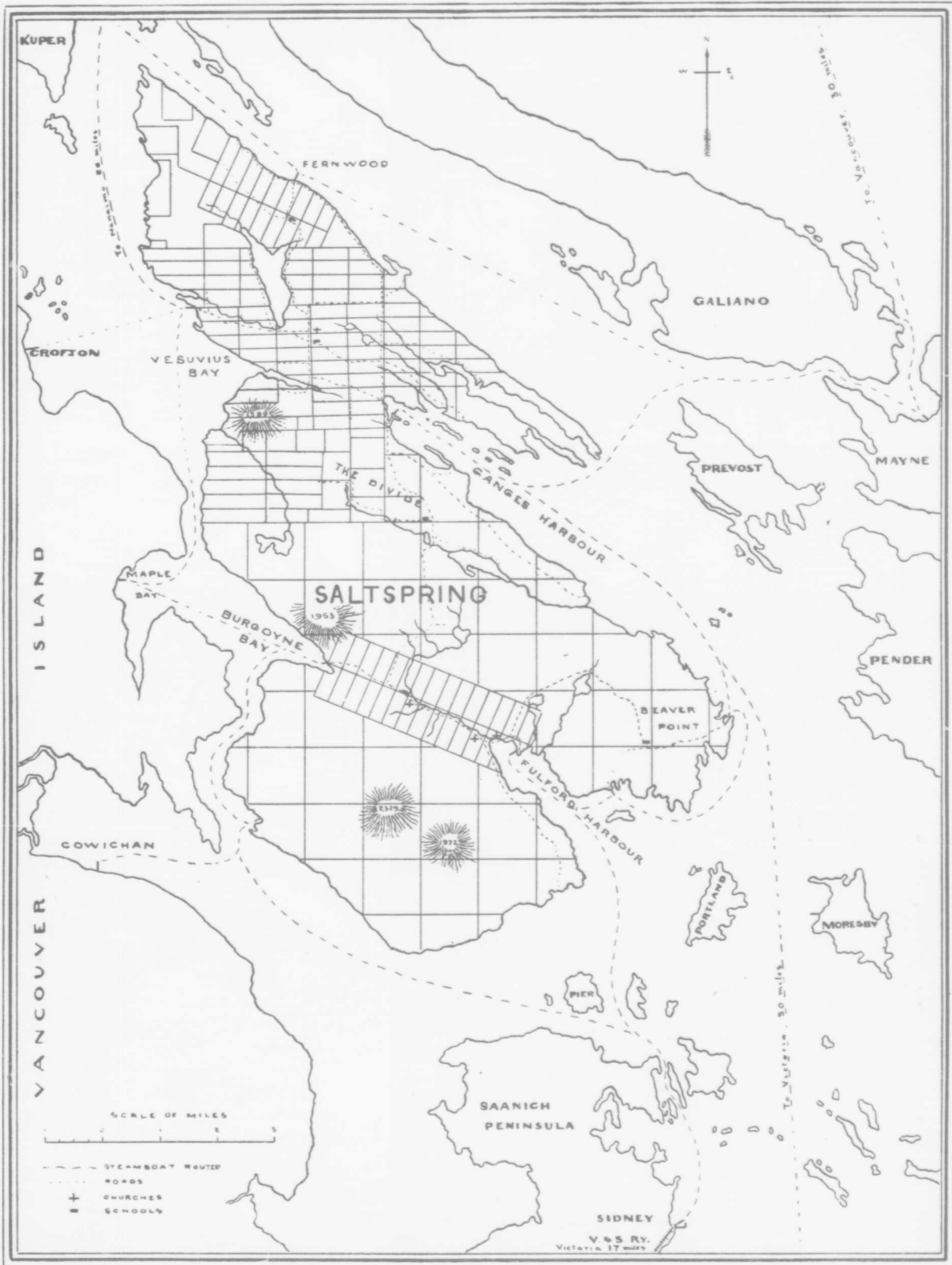
Map  
of  
IDA



# SALTSPRING ISLAND

1902

BRITISH COLUMBIA



MAP OF SALTSPRING ISLAND, B. C.

Wsp  
971.15a  
I 82



GANGES HARBOUR.

This Pamphlet is published with the authority of the **Islands Farmers' Institute of British Columbia**, in the belief that there are many, having but a moderate income coupled with a love of a country life, who would be glad, untrammelled by conventions, to make a home for themselves by work, bring up their children to a healthy independent life, and gratify those tastes for shooting and fishing which their means will not permit in the Old Country.

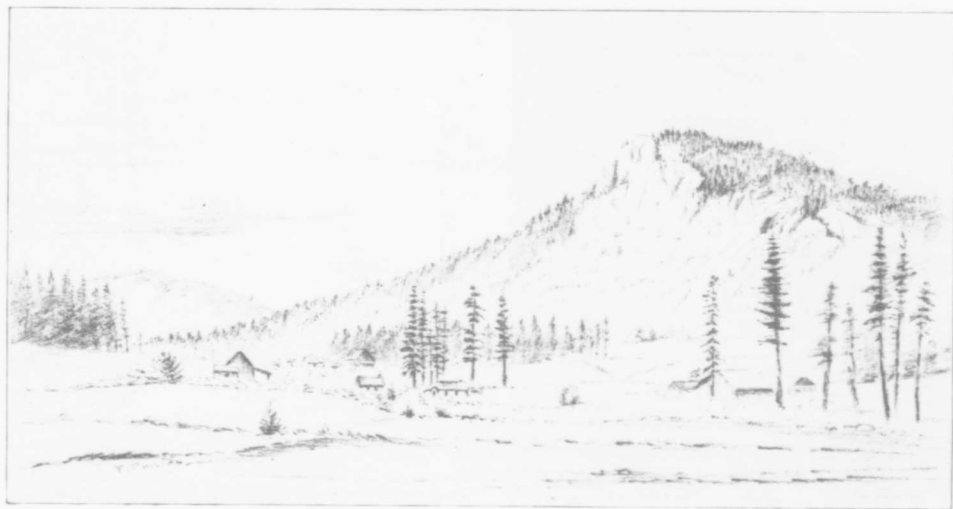
EDWARD WALTER,

Sec'y Islands Farmers' Institute,

August, 1902.

Ganges Harbour, B. C.

104516



MT. BAYNES, SOUTH SALT SPRING.



FULFORD HARBOUR.

**S**altspring Island—Admiral Island on the old charts—in the Province of **British Columbia**, in the Dominion of Canada, lying immediately south of the 49th parallel of north latitude, sheltered from the Pacific storms by the large island of Vancouver, and protected on the east by many smaller isles which dot the surface of the Gulf of Georgia across to the mainland of the North American continent, is probably as regards position and climate the most favoured of all the British Columbia islands.

In the centre of the triangle formed by the three chief **ports** of the Province—Victoria, Vancouver and Nanaimo—it is on the direct route of steamers plying between the capital, Victoria (pop. 21,000), and Nanaimo, the Coal City of the North Pacific (pop. 6,000), giving the Island daily connection with both places. It is about 50 miles by water from Victoria to Ganges Harbour, and rather less *via* the Victoria and Sidney railway; 26 from Nanaimo—both places on Vancouver Island—and 30 from Vancouver City (pop. 26,000) on the mainland, the terminus of the Canadian Pacific railway.

The Island is about 17 miles in length from north to south, with an extreme width of nine miles, and contains roughly 45,000 **acres**, the greater part of which is mountainous, the highest point being 2,329 ft. above the sea.

The **climate** is mild and very similar to that of the south of England. The temperature in summer seldom exceeds 86° Fahr. in the shade and the nights are invariably cool. Cold weather for



STORE, VESUVIUS.

H. STEVENS' BOARDING HOUSE.

a week or so may be expected in November and January, when the temperature may fall to 20°, or once in ten years, perhaps, to within two or three degrees of zero. The average annual rainfall for the district is 39 ins. and rainy days 172. The snowfall is light, and thunder storms very rare.

Dr. Gerald Baker, Ganges Harbour, says: "I consider the climate of Saltspring Island to be extremely healthy. Children thrive well, and we are particularly free from all zymotic diseases."

Although the Island takes its name from salt springs found near the north end, there is an abundant supply of sweet **water**, good springs are plentiful and there are eleven lakes.



ST. MARK'S, CHURCH OF ENGLAND, VESUVIUS.

There are 100 occupied farms with a settled **population** of 430.

There are several boarding houses and general stores, two postoffices ("Saltspring Island" and "South Saltspring Island"), and five public **day schools**.

The **Rev. E. F. Wilson** is the resident clergyman of the Church of England and has two churches, and there is a Roman Catholic and also a Methodist church.

There is a resident English **doctor**, and a telephone line extends over the greater part of the Island and is connected from Burgoyne Bay with the Victoria-Nanaimo line.



METHODIST CHURCH,

ROMAN CATHOLIC CHURCH,

SOUTH SALTSRING.

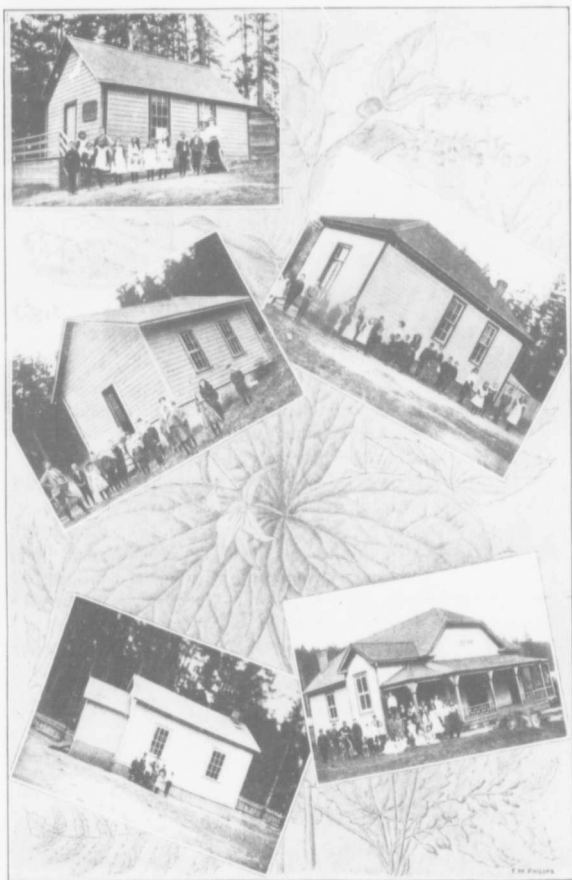




ST. MARY'S, CHURCH OF ENGLAND, SOUTH SALTSPRING.

**G**enerations of Alder and Maple have covered the valleys and bottom lands of Salt Spring Island with a rich, black, leaf mould overlying a clay subsoil, which yields on cultivation heavy crops of **hay, grain, and roots**. But the higher lands and hill slopes, which nature has clothed chiefly with fir, cedar and balsam, and an undergrowth of the evergreen salal (*gaultheria shallon*) and bracken, have been found by experience to be the best positions for **orchards**, and here, with a careful choice of aspect almost all kinds of fruit peculiar to temperate climates may be grown. Seen from a distance the island appears densely wooded to the mountain tops, but the timber thins as the elevation increases, giving space for grasses and many evergreen and deciduous shrubs. It is on the rocky, wooded heights that **sheep** thrive, secure from beasts of prey, sheltered from rain and wind by some thick branching fir, or basking on a ledge of lichen-covered rock. Here they find food the year round, but the careful shepherd will provide a box of salt and a rack of sweet hay in winter to which the sheep will come when snow threatens or feed is scarce.

**Dairying, fruit growing, sheep raising** for lamb and mutton, and **poultry keeping** are all carried on with profit, and a ready sale for first class produce is found in Victoria and Nanaimo.



THE SALTSRING ISLAND SCHOOLS.

Some prices of **farm produce**: Apples average 75 cents a box of 40 lbs., eggs 15 cents to 50 cents per doz., butter 20 cents to 35 cents per lb., lambs (live) \$3.50 each, fowls (live) \$6 per doz., broilers (live) \$4 per doz., ducks (live) \$6 per doz., and pigs 7 cents per lb. live weight.

**Freight** to Victoria and Nanaimo \$2.50 per ton, 25 cents for single packages and lambs (1 cent =  $\frac{1}{2}$  penny, \$1 = 42).

Prices of **supplies**: Flour \$5 a bbl. of 200 lbs., sugar 6 cents per lb., wheat  $1\frac{1}{2}$  cents per lb., potatoes \$1 per 100 lbs., meats 10 to 12 cents per lb.



CUTTING FIREWOOD.

**The price of land** varies with quality, situation, distance from a wharf, etc. Ranches of 100 to 160 acres are worth \$1,000 to \$5,000 (£200 to £1,000) according to amount of improvements, and a man should be able to make a living at once on a \$5,000 farm.

**Labourers** and **house servants** are scarce and expensive, but during winter Japs can be had at 75 cents a day, boarding themselves.

The felling of the timber on **new land** costs \$6 to \$8 per acre. This is done in winter and the trees being left to dry



PLOUGHING, SALTSRING ISLAND.

through the summer, a fire is run over them in the fall; the logs that remain being cut up, piled and burnt, the land is then seeded down to grass or broken up for a first crop of potatoes.

A six-roomed cottage will cost from \$400 (£80), and a cow \$40 (£8).

There are many kinds of **wild fruits**, strawberries, blackberries, and cranberries being the most useful.

The chief **exports** besides agricultural products are pit props, cordwood, charcoal, and sandstone.



THE OLD STYLE.

**L**overs of the **Rod and Gun** should find on Saltspring an attractive home, and from year's end to year's end ample occupation for leisure hours. From March to October **the lakes**, which abound in trout, furnish excellent sport to the fly fisher, their different altitudes extending the season well through the summer; as the higher lakes will often reward a visit when one might flog in vain the surface of those at a lower level. The **trout** (*salmo mykiss*) are usually from  $\frac{3}{4}$  lb. to  $1\frac{1}{4}$  lbs., but have been taken of much heavier weights.



A CROP OF OATS, SALTSRING ISLAND.

With September **the gun** begins to take the place of the rod, and throughout the fall and winter months the rancher may well provide his larder with venison (blacktail deer, *cariacus columbianus*), blue and willow grouse, pheasant (introduced), snipe, and a varied assortment of waterfowl. And in the quiet pursuit of game, the hunter will meet with many lovely prospects, of purple hill and placid sea, of a distant jagged ridge of snow-capped mountains, or of some giant peak, cone-shaped, solitary and glittering, above the blue haze of many miles of intervening forest; or, from a tall cliff look down over the



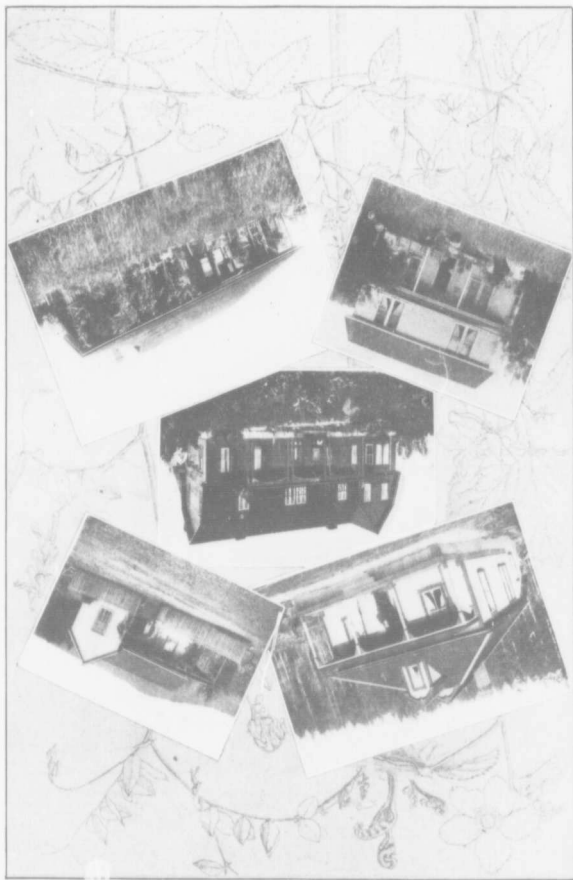
AN ISLAND LAKE.

needle tops of a sea of dark firs, flecked here and there with a golden maple, on some quiet lake set in green meadows and reddening orchards, with a curl of blue smoke rising from the hidden homestead.

The **game laws** of the Province are stringent, and legislation tends towards preserving the game for the occupier of the soil.

The bays and inlets of the sea offer safe **boating**, and a cruise among the many surrounding islands, making visits and

SOME SALTSPRING ISLAND HOMES.





fishing, and camping at night in some sheltered cove, is a most agreeable way of spending a week or two in the summer months. **Salmon** (July to November), sea trout (throughout the summer), and rock cod and ling (May to July) can be caught trolling with rod and spoon bait. **Halibut**, cod, and mackerel (so called), can be taken with bait from January to May in deep water, and flounders, herring and smelts are plentiful in season. Oysters are found in certain places, and clams everywhere along the shore.

The more adventurous need not, however, confine themselves to home waters, but can visit the neighbouring Vancouver Island, where elk (*cervus canadensis*) can still be found; or in a



BOATS ON GANGES HARBOUR.

sloop or steam launch explore the sheltered waterways north even to Alaska, and visit the many inlets on the mainland coast in search of bear and mountain goat, or to prospect for minerals. And although the sportsman will find on Saltspring Island such scenes and pursuits as should be dear to all lovers of nature, he need not cut himself and family adrift from the comforts and conveniences of modern civilisation, nor from social intercourse; and those looking for a home will appreciate the Island's freedom from beasts of prey, poisonous snakes, malaria, and last but not least, from mosquitoes.

F. M. PHILIPS.



A SALTPRING BUCK.

