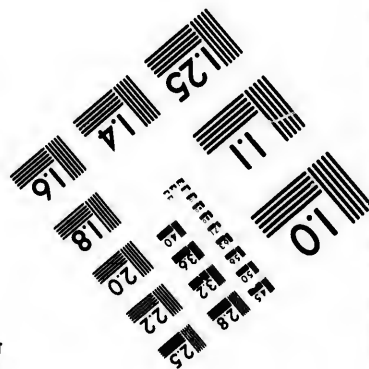
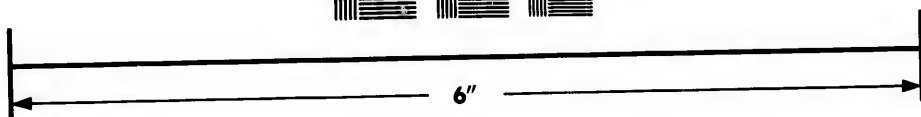
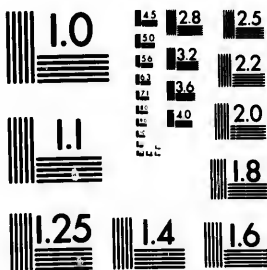


**IMAGE EVALUATION
TEST TARGET (MT-3)**



**Photographic
Sciences
Corporation**

23 WEST MAIN STREET
WEBSTER, N.Y. 14580
(716) 872-4503

1.45
1.8
2.2
2.5
2.8
3.2
3.6
4.0

**CIHM/ICMH
Microfiche
Series.**

**CIHM/ICMH
Collection de
microfiches.**



Canadian Institute for Historical Microreproductions / Institut canadien de microreproductions historiques

1.0
1.25
1.5
1.8
2.0
2.25
2.5
2.75
3.0

© 1981

Technical and Bibliographic Notes/Notes techniques et bibliographiques

The Institute has attempted to obtain the best original copy available for filming. Features of this copy which may be bibliographically unique, which may alter any of the images in the reproduction, or which may significantly change the usual method of filming, are checked below.

L'Institut a microfilmé le meilleur exemplaire qu'il lui a été possible de se procurer. Les détails de cet exemplaire qui sont peut-être uniques du point de vue bibliographique, qui peuvent modifier une image reproduite, ou qui peuvent exiger une modification dans la méthode normale de filmage sont indiqués ci-dessous.

- Coloured covers/
Couverture de couleur
- Covers damaged/
Couverture endommagée
- Covers restored and/or laminated/
Couverture restaurée et/ou pelliculée
- Cover title missing/
Le titre de couverture manque
- Coloured maps/
Cartes géographiques en couleur
- Coloured ink (i.e. other than blue or black)/
Encre de couleur (i.e. autre que bleue ou noire)
- Coloured plates and/or illustrations/
Planches et/ou illustrations en couleur
- Bound with other material/
Relié avec d'autres documents
- Tight binding may cause shadows or distortion
along interior margin/
La reliure serrée peut causer de l'ombre ou de la
distortion le long de la marge intérieure
- Blank leaves added during restoration may
appear within the text. Whenever possible, these
have been omitted from filming/
Il se peut que certaines pages blanches ajoutées
lors d'une restauration apparaissent dans le texte,
mais, lorsque cela était possible, ces pages n'ont
pas été filmées.
- Additional comments: /
Commentaires supplémentaires:

- Coloured pages/
Pages de couleur
- Pages damaged/
Pages endommagées
- Pages restored and/or laminated/
Pages restaurées et/ou pelliculées
- Pages discoloured, stained or foxed/
Pages décolorées, tachetées ou piquées
- Pages detached/
Pages détachées
- Showthrough/
Transparence
- Quality of print varies/
Qualité inégale de l'impression
- Includes supplementary material/
Comprend du matériel supplémentaire
- Only edition available/
Seule édition disponible
- Pages wholly or partially obscured by errata
slips, tissues, etc., have been refilmed to
ensure the best possible image/
Les pages totalement ou partiellement
obscurcies par un feuillet d'errata, une palure,
etc., ont été filmées à nouveau de façon à
obtenir la meilleure image possible.

This item is filmed at the reduction ratio checked below/
Ce document est filmé au taux de réduction indiqué ci-dessous.

10X	12X	14X	16X	18X	20X	22X	24X	26X	28X	30X	32X
<input type="checkbox"/>	<input type="checkbox"/>	<input type="checkbox"/>	<input type="checkbox"/>	<input type="checkbox"/>	<input type="checkbox"/>	<input type="checkbox"/>	<input type="checkbox"/>	<input type="checkbox"/>	<input type="checkbox"/>	<input checked="" type="checkbox"/>	<input type="checkbox"/>

The copy filmed here has been reproduced thanks to the generosity of:

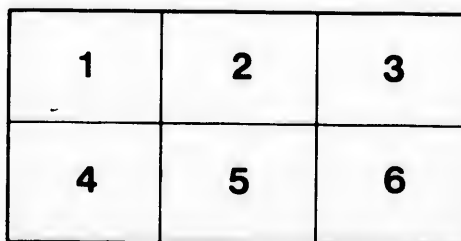
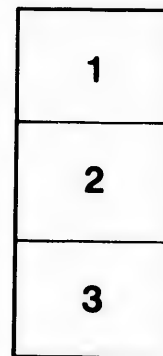
Library Division
Provincial Archives of British Columbia

The images appearing here are the best quality possible considering the condition and legibility of the original copy and in keeping with the filming contract specifications.

Original copies in printed paper covers are filmed beginning with the front cover and ending on the last page with a printed or illustrated impression, or the back cover when appropriate. All other original copies are filmed beginning on the first page with a printed or illustrated impression, and ending on the last page with a printed or illustrated impression.

The last recorded frame on each microfiche shall contain the symbol \rightarrow (meaning "CONTINUED"), or the symbol ∇ (meaning "END"), whichever applies.

Maps, plates, charts, etc., may be filmed at different reduction ratios. Those too large to be entirely included in one exposure are filmed beginning in the upper left hand corner, left to right and top to bottom, as many frames as required. The following diagrams illustrate the method:



L'exemplaire filmé fut reproduit grâce à la générosité de:

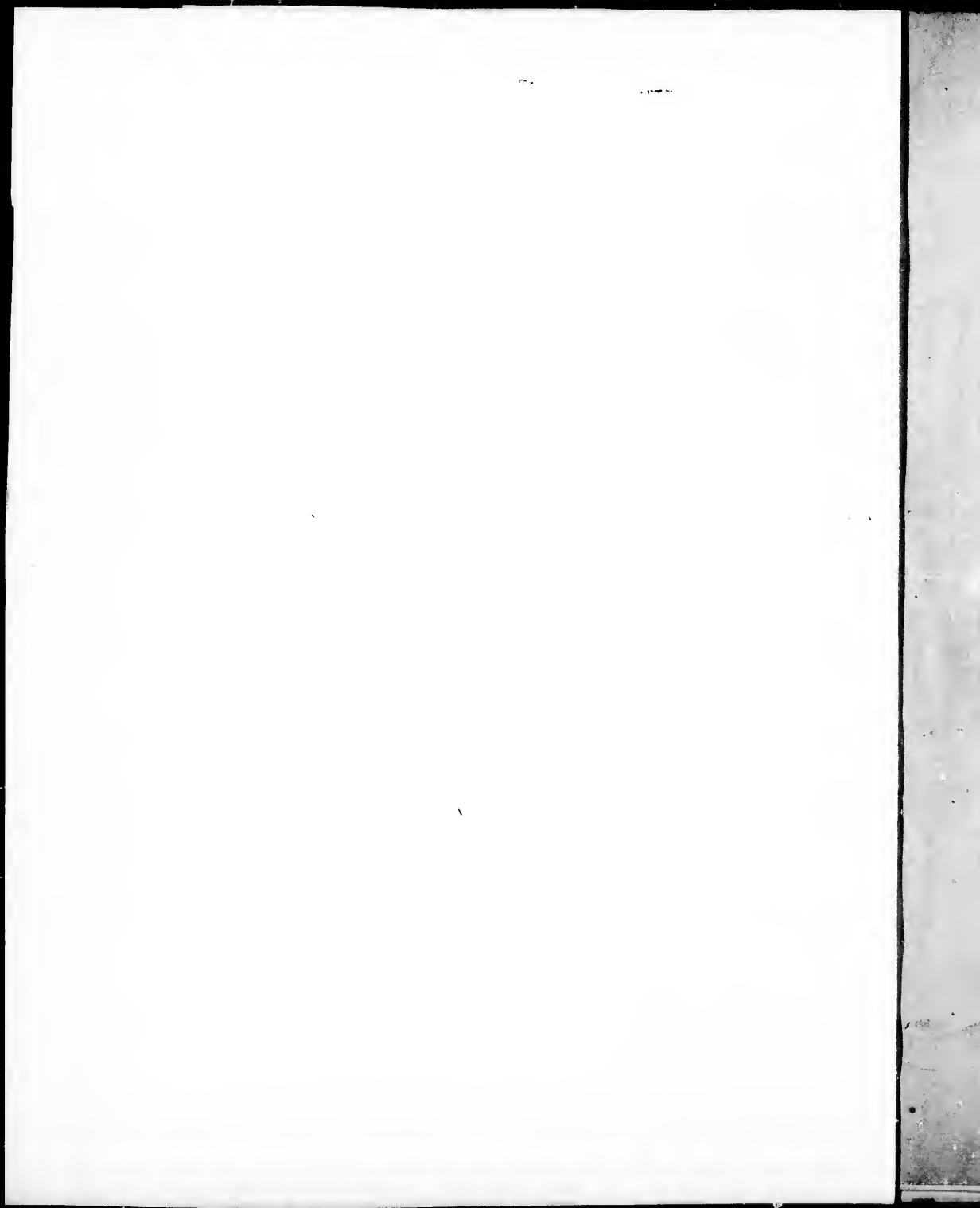
Library Division
Provincial Archives of British Columbia

Les images suivantes ont été reproduites avec le plus grand soin, compte tenu de la condition et de la netteté de l'exemplaire filmé, et en conformité avec les conditions du contrat de filmage.

Les exemplaires originaux dont la couverture en papier est imprimée sont filmés en commençant par le premier plat et en terminant soit par la dernière page qui comporte une empreinte d'impression ou d'illustration, soit par le second plat, selon le cas. Tous les autres exemplaires originaux sont filmés en commençant par la première page qui comporte une empreinte d'impression ou d'illustration et en terminant par la dernière page qui comporte une telle empreinte.

Un des symboles suivants apparaîtra sur la dernière image de chaque microfiche, selon le cas: le symbole \rightarrow signifie "A SUIVRE", le symbole ∇ signifie "FIN".

Les cartes, planches, tableaux, etc., peuvent être filmés à des taux de réduction différents. Lorsque le document est trop grand pour être reproduit en un seul cliché, il est filmé à partir de l'angle supérieur gauche, de gauche à droite, et de haut en bas, en prenant le nombre d'images nécessaire. Les diagrammes suivants illustrent la méthode.



Baynes Reed



ABSTRACTS

FROM

THE METEOROLOGICAL OBSERVATIONS

TAKEN IN THE

YEARS 1860-61.

AT THE

ROYAL ENGINEER OFFICE, NEW WESTMINSTER, BRITISH COLUMBIA.

EDITED BY

COLONEL SIR HENRY JAMES, R.E.

F.R.S., M.R.I.A., F.G.S., &c.



LONDON:

**PRINTED BY GEORGE EDWARD EYRE AND WILLIAM SPOTTISWOODE,
PRINTERS TO THE QUEEN'S MOST EXCELLENT MAJESTY,
FOR HER MAJESTY'S STATIONERY OFFICE.**

1862.

mw

971.26

J27

NEW WESTMINSTER, BRITISH COLUMBIA.

MONTHLY AND YEARLY MEANS OF METEOROLOGICAL OBSERVATIONS FOR
THE YEARS 1860-61.

OBSERVATIONS taken by Lance Corporals Peter J. Leech and James Conroy, R.E., under the direction of Captain R. M. Parsons, Royal Engineers.

NEW WESTMINSTER, BRITISH COLUMBIA.

Latitude 49° 12' 47" N. Longitude 122° 53' 19" W. Height above the sea 54 feet.

Remarks.

1860:

January.—The general state of the weather during the month has been dull and foggy, and a considerable quantity of rain has fallen, occasionally accompanied with snow.

February.—The weather during the month, has been similar to that experienced during the previous month, with the exception of fogs being less frequent.

March.—A considerable quantity of rain has fallen during the month. Butterflies appeared about the 9th. Thorns began to bud about the 10th, and a few flies to appear. Mosquitoes began to appear about the 22d.

April.—The weather has been very pleasant during the month. Mosquitoes numerous in the woods.

May.—A heavy fall of rain on the 9th of this month; but the weather has been generally fine and pleasant.

June.—No observations received for this month.

July.—Weather very fine and pleasant this month. Mosquitoes still very numerous.

August.—Very little rain during the month. The flood tide stemmed the downward current of the Fraser at New Westminster on the 19th, for the first time since the 22d May.

September.—The weather during the month has been very fine and pleasant.

October.—The weather has been more damp and foggy this month; with an increase in the fall of rain.

November.—Two very heavy gales of wind during the month, both from the south; on the mornings of the 10th and 11th respectively.

December.—Heavy fall of rain on the 30th. Month generally fine.

PRINCIPAL STATIONS OF THE ROYAL ENGINEERS IN 1861.

NEW WESTMINSTER, BRITISH COLOMBIA—continued.

Latitude 49° 12' 47" N.

Longitude 122° 53' 19" W.

From daily observations.	Hours Observation.	1861.												For the Year.
		Jan.	Feb.	March.	April.	May.	June.	July.	August.	Sept.	Oct.	Nov.	Dec.	
Mean height of the barometer at the temperature of 32°, and corrected for those mean level of the sea, for each month and for the year, at -	9.30 a.m.	30-082	30-062	30-057	29-993	30-011	29-968	30-046	30-061	30-053	30-071	29-817	29-904	30-004
	3.30 p.m.	30-067	29-977	30-044	29-982	29-994	29-935	30-036	30-044	30-028	30-063	29-792	29-909	29-991
Mean range of barometer (observed) -	-	0-013	0-025	0-011	0-011	0-017	0-013	0-010	0-007	0-025	0-008	0-025	0-002	0-014
Mean temperature of the air for each month and for the year, at -	9.30 a.m.	33-2	38-2	42-6	48-1	53-6	59-1	64-8	64-0	59-9	48-8	39-1	34-2	48-8
	3.30 p.m.	33-4	42-3	47-5	51-4	57-7	64-6	68-9	68-0	64-4	50-9	40-6	35-2	52-2
Range of temperature of the air -	-	2-2	4-1	4-9	3-3	4-1	5-5	4-1	4-0	4-5	2-1	1-5	1-0	3-4
Mean temperature of evaporation for each month and for the year, at -	9.30 a.m.	37-0	37-5	41-0	45-0	49-4	55-1	58-9	59-7	57-3	48-1	38-6	37-8	46-4
	3.30 p.m.	31-5	39-9	43-0	46-1	51-0	57-3	59-6	60-9	59-0	49-0	39-7	34-3	47-8
Range of temperature of evaporation -	-	1-5	2-4	2-0	1-1	1-6	2-2	0-7	1-2	1-7	0-9	1-1	0-5	1-4
Mean humidity for each month and for the year, at -	9.30 a.m.	0-909	0-935	0-866	0-794	0-762	0-703	0-706	0-733	0-849	0-905	0-951	0-941	0-838
	3.30 p.m.	0-899	0-822	0-709	0-692	0-664	0-622	0-609	0-693	0-745	0-864	0-931	0-878	0-765
Mean maximum temperature of the air -	-	-	-	-	-	-	-	-	-	-	-	-	-	-
Mean minimum temperature of the air -	-	-	-	-	-	-	-	-	-	-	-	-	-	-
Approximate mean temperature of the air -	-	-	-	-	-	-	-	-	-	-	-	-	-	-
Mean maximum temperature in the sun -	-	-	-	-	-	-	-	-	-	-	-	-	-	-
Mean minimum temperature on the grass -	-	-	-	-	-	-	-	-	-	-	-	-	-	-
Mean maximum temperature of evaporation -	-	-	-	-	-	-	-	-	-	-	-	-	-	-
Mean minimum temperature of evaporation -	-	-	-	-	-	-	-	-	-	-	-	-	-	-
Quantity of rain in { on the ground - incl os, each month } above the ground -	-	-	-	-	-	-	-	-	-	-	-	-	-	-
Greatest quantity of rain in incl (os, in 24 hours, for each month	-	-	-	-	-	-	-	-	-	-	-	-	-	-
		7-190	5-485	3-270	5-265	4-355	4-770	0-390	3-180	1-075	6-145	11-620	9-605	62-660
		Date	Date	Date	Date	Date	Date	Date	Date	Date	Date	Date	Date	Date
		0-9-55-25	0-8-29-11	1-5-40-7	0-9-09-6	1-3-57-26	0-8-04-4	0-3-20-22	0-9-02-29	0-3-20-15	1-2-04-5	2-1-25-3	1-7-11-1	2-13-5

OBSERVATIONS taken by 2nd Corporal Peter J. Leech and Lance Corporal Conroy, R.E.,
under the direction of Captain R. M. Parsons, R.E.

NEW WESTMINSTER, BRITISH COLUMBIA.

Latitude 49° 12' 47" N. Longitude 122° 53' 19" N. Height above the sea 54 feet.

Remarks.

1861:

January.—Heavy fall of snow on the 16th. Lunar halo on 19th. Weather during the month generally fine and frosty.

February.—Very showery during the month. Snow on 11th and 23d. Aurora borealis on night of 28th.

March.—Weather during the month generally fine. Snow on 7th and 22d.

April.—A good deal of rain in the earlier part of the month. Weather very fine towards the middle of the month.

May.—Heavy rain accompanied with thunder and lightning on the night of the 26th. Weather generally fine.

June.—Weather fine with occasional showers. Heavy showers on 6th and 23d.

July.—During the whole of this month the weather has been very fine.

August.—During this month the weather has been fine with occasional showers, and heavy rain on 29th and 30th.

September.—Heavy rain on 16th. Weather generally fine.

October.—The weather during this month has been rather dull, with a good deal of rain, especially towards the middle and latter parts of the month.

November.—Heavy rain during the month, with snow and frost towards the latter part.

December.—A great deal of rain has fallen during this month, accompanied with frost and snow.

N.B.—The instruments in use were made by Casella, London, and were carefully compared at the Kew Observatory previously to being sent out to the above station.

LONDON:

Printed by GEORGE E. EYRE and WILLIAM SPOTTISWOODS,
Printers to the Queen's most Excellent Majesty,
For Her Majesty's Stationery Office.

