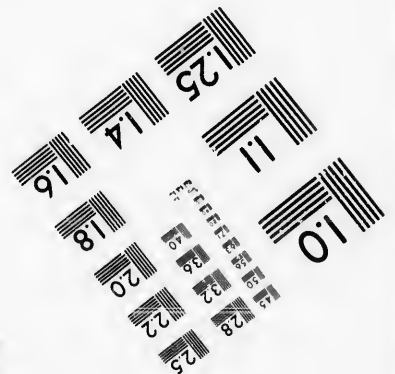
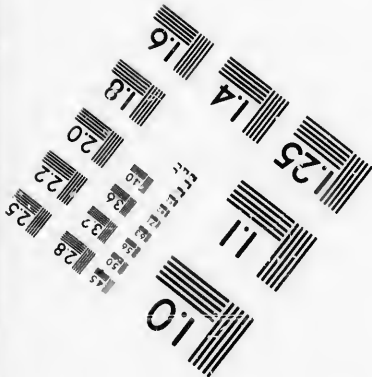
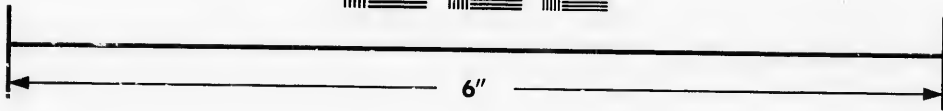
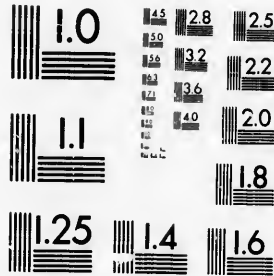


**IMAGE EVALUATION  
TEST TARGET (MT-3)**



**Photographic  
Sciences  
Corporation**

23 WEST MAIN STREET  
WEBSTER, N.Y. 14580  
(716) 872-4503



**CIHM/ICMH  
Microfiche  
Series.**

**CIHM/ICMH  
Collection de  
microfiches.**



**Canadian Institute for Historical Microreproductions / Institut canadien de microreproductions historiques**



**© 1986**

Technical and Bibliographic Notes/Notes techniques et bibliographiques

The Institute has attempted to obtain the best original copy available for filming. Features of this copy which may be bibliographically unique, which may alter any of the images in the reproduction, or which may significantly change the usual method of filming, are checked below.

L'Institut a microfilmé le meilleur exemplaire qu'il lui a été possible de se procurer. Les détails de cet exemplaire qui sont peut-être uniques du point de vue bibliographique, qui peuvent modifier une image reproduite, ou qui peuvent exiger une modification dans la méthode normale de filmage sont indiqués ci-dessous.

- Coloured covers/  
Couverture de couleur
- Covers damaged/  
Couverture endommagée
- Covers restored and/or laminated/  
Couverture restaurée et/ou pelliculée
- Cover title missing/  
Le titre de couverture manque
- Coloured maps/  
Cartes géographiques en couleur
- Coloured ink (i.e. other than blue or black)/  
Encre de couleur (i.e. autre que bleue ou noire)
- Coloured plates and/or illustrations/  
Planches et/ou illustrations en couleur
- Bound with other material/  
Relié avec d'autres documents
- Tight binding may cause shadows or distortion  
along interior margin/  
La reliure serrée peut causer de l'ombre ou de la  
distorsion le long de la marge intérieure
- Blank leaves added during restoration may  
appear within the text. Whenever possible, these  
have been omitted from filming/  
Il se peut que certaines pages blanches ajoutées  
lors d'une restauration apparaissent dans le texte,  
mais, lorsque cela était possible, ces pages n'ont  
pas été filmées.

- Coloured pages/  
Pages de couleur
- Pages damaged/  
Pages endommagées
- Pages restored and/or laminated/  
Pages restaurées et/ou pelliculées
- Pages discoloured, stained or foxed/  
Pages décolorées, tachetées ou piquées
- Pages detached/  
Pages détachées
- Showthrough/  
Transparence
- Quality of print varies/  
Qualité inégale de l'impression
- Includes supplementary material/  
Comprend du matériel supplémentaire
- Only edition available/  
Seule édition disponible
- Pages wholly or partially obscured by errata  
slips, tissues, etc., have been refilmed to  
ensure the best possible image/  
Les pages totalement ou partiellement  
obscurcies par un feuillet d'errata, une pelure,  
etc., ont été filmées à nouveau de façon à  
obtenir la meilleure image possible.

- Additional comments:/ [Printed ephemera] [4] p. There are some creases in the middle of the pages.  
Commentaires supplémentaires:

This item is filmed at the reduction ratio checked below/  
Ce document est filmé au taux de réduction indiqué ci-dessous.

10X	14X	18X	22X	26X	30X
<input type="checkbox"/>	<input type="checkbox"/>	<input type="checkbox"/>	<input type="checkbox"/>	<input checked="" type="checkbox"/>	<input type="checkbox"/>
12X	16X	20X	24X	28X	32X

The copy filmed here has been reproduced thanks to the generosity of:

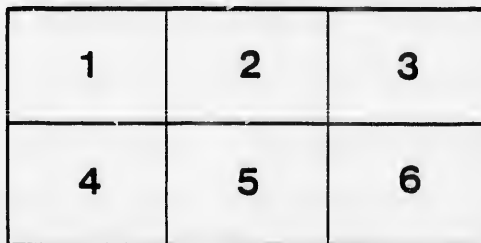
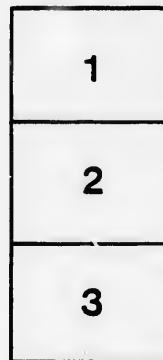
D.B. Weldon Library  
University of Western Ontario  
(Regional History Room)

The images appearing here are the best quality possible considering the condition and legibility of the original copy and in keeping with the filming contract specifications.

Original copies in printed paper covers are filmed beginning with the front cover and ending on the last page with a printed or illustrated impression, or the back cover when appropriate. All other original copies are filmed beginning on the first page with a printed or illustrated impression, and ending on the last page with a printed or illustrated impression.

The last recorded frame on each microfiche shall contain the symbol  $\rightarrow$  (meaning "CONTINUED"), or the symbol  $\nabla$  (meaning "END"), whichever applies.

Maps, plates, charts, etc., may be filmed at different reduction ratios. Those too large to be entirely included in one exposure are filmed beginning in the upper left hand corner, left to right and top to bottom, as many frames as required. The following diagrams illustrate the method:



L'exemplaire filmé fut reproduit grâce à la générosité de:

D.B. Weldon Library  
University of Western Ontario  
(Regional History Room)

Les images suivantes ont été reproduites avec le plus grand soin, compte tenu de la condition et de la netteté de l'exemplaire filmé, et en conformité avec les conditions du contrat de filmage.

Les exemplaires originaux dont la couverture en papier est imprimée sont filmés en commençant par le premier plat et en terminant soit par la dernière page qui comporte une empreinte d'impression ou d'illustration, soit par le second plat, selon le cas. Tous les autres exemplaires originaux sont filmés en commençant par la première page qui comporte une empreinte d'impression ou d'illustration et en terminant par la dernière page qui comporte une telle empreinte.

Un des symboles suivants apparaîtra sur la dernière image de chaque microfiche, selon le cas: le symbole  $\rightarrow$  signifie "A SUIVRE", le symbole  $\nabla$  signifie "FIN".

Les cartes, planches, tableaux, etc., peuvent être filmés à des taux de réduction différents. Lorsque le document est trop grand pour être reproduit en un seul cliché, il est filmé à partir de l'angle supérieur gauche, de gauche à droite, et de haut en bas, en prenant le nombre d'images nécessaire. Les diagrammes suivants illustrent la méthode.

errata  
to

pelure,  
n à



32X

Ladies! the only way to get help is through the "Free Press" Want Column.

**READ AND REFLECT.**

NOTICE TO OUR PATRONS—If the individual members of an audience would stop to think for just an instant, they would undoubtedly appreciate the fact that the habit of rising from their seats and leaving the theatre before the curtain falls, is a most annoying one, and one that should be stopped. We therefore beg our audiences to kindly remain in their seats until the close of the performance.

Evenings—doors open at 7:30, curtain rises at 8:15 sharp. Matinees—doors open at 1:30; curtain rises at 2:30 sharp.

Plan seats for each attraction two days in advance.



Seats can be secured by mail, telegraph or telephone. Telephone 2739. Physicians are requested to register at the Box Office, leaving sent number, as this will enable Ushers to find them if called for, without disturbing the audience. Carriages can be ordered at the Box Office or of the Chief Usher.

Please report to the management any intimation on the part of the employees. Overcoats, packages and umbrellas checked for a small charge. For all lost articles apply at Box Office. Opera Glasses can be rented by applying to Ushers or at Box Office.

It is strange, but there is a class of people that seem to take an intense delight in bespattering the floor with tobacco juice and in being boisterous and using profane language. These people should know at once that the com. authorize their immediate expulsion, should the management see fit to exercise its rights.

**B**ETWEEN the Acts, and after the Opera is over go to the

**OPERA + CIGAR STORE**

For Cigars, Cigarettes, Etc.  
LOUIS RISK

**W. T. STRONG,**

Dispensing + Chemist

184 Dundas Street,  
LONDON - - - ONTARIO.

**HATS!**

~ LATEST ~

American and English Shapes

In all Colors,

~ JUST OPENED. ~

*Rivard*

LONDON'S FASHIONABLE HATTER,

400 Richmond St., LONDON, ONT.

C. J. WHITNEY ..... LESSEE AND MANAGER  
A. E. ROOTE ..... REPRESENTATIVE  
FRED. L. EVANS ..... DIRECTOR OF ORCHESTRA.  
GUS. SCHABACKER ..... STAGE MANAGER.  
JAMES LAMB ..... CHIEF USHER.

Tuesday, April 25th, 1893.

**PROGRAMME.**

**THE NEW**

**SHADOW**

**DETECTIVE.**

(Programme Continued on Page 3.)

FINE FOOTWEAR  
SPRING AND SUMMER STYLES

Central Shoe Store

145 DUNDAS STREET.

JNO. S. BROWN

TELEPHONE 881.

**OUR PROGRAM.**

- FOR THE PEOPLE'S PERPETUAL PIC-NIC!
- THE GENUINE—Heintzman & Co., Pianos!
- THE WORLD-FAMED—Emerson Pianos!
- THE UNEQUALLED—Goderich Organs!
- THE PERFECT—White Sewing Machines!
- AN ENDLESS DISPLAY OF—Small Musical Instruments!
- A MODEL ASSORTMENT OF—Strings, Fittings, Music Books, Etc
- THE ALL-IMPORTANT—Marriage Licenses!

These and countless other good things can be obtained at "COLWELL'S POPULAR MUSIC HOUSE," 171 Dundas Street, LONDON.

Our prices and Terms are the most reasonable. We deal very liberally with everybody. From distant buyers we invite orders by Mail, Telephone or Telegraph.

C. P. M. K. Leads all Competitors.  
CHAS. F. COLWELL, Proprietor.

The only place in the City to get the latest

**SCARFS.**

*Burns*

The Furnisher.

A MAN

Wants to see you Between Acts

JERRY McDONALD'S

Across the Road.

181 KING STREET.

If you want the best take the "Free Press," all the news.

# Burns

\* \* **SAYS**  
That the D. B. Sac Suit  
Will lead this Fall.

AND HE IS RIGHT.

**GREAT  
PRIZE SALE**

Every Cash Customer buying One Dollar's  
worth or more of

**WALL PAPER,**

**WINDOW SHADES,**

**CORNICE POLES,**

**ARTISTS' MATERIALS,**

**PICTURE FRAMES,**



**PICTURES,**

**ETC., ETC., ETC.**

Stands the chance of securing a Prize worth from \$1.00  
to \$20.00 according to amount of purchase.

**E. N. HUNT,**  
190 DUNDAS ST., LONDON.

**NEXT ATTRACTION.** \*

TO-MORROW NIGHT,  
Wednesday, April 26

THE GIFTED ACTOR,  
**MR. NEWTON BEERS**

Supported by the young emotional actress,

**LORA ADDISON CLIFT**

And an excellent Company, in his masterpiece  
of melo-drama,

**Lost in London**

CAST.

JOB ARMROYD, the Swart King... NEWTON BEERS  
Gilbert Featherstone, a master of Bleakmore, Carroll Daly  
Sir Fred Loder, his friend... Robert Burner  
Benjamin Blinker, a London Tiger... Chas. Thropp  
Topps, a post boy... F. H. Worthy  
Thomas, a butler... Wentworth Davis  
Elias Crow, a humanitarian... Walter Eddings  
Bowles, a policeman... Sam Chadwick  
Poor Joe, a street wail... Miss May Lovington  
Longbones, a miner... Charles Failed  
Nellie Armroyd, Job's wife... Miss Lora Addison Clift  
Lancashire lass... Miss Kate Romaine  
Florence, a domestic... Miss May Lovington  
Agnes Wild, an outcast... Miss Annie Starr  
Miners, Guests, etc.

SYNOPSIS.

ACT I.—Home of the Swart King.  
ACT II.—Heart of Bleakmore.  
ACT III.—Featherstone's London Villa.  
ACT IV.—London Streets at night.  
ACT V.—A Cottage near London,  
and Job's Vision.

INCIDENTAL SONGS AND DANCES.

During the action of the play the following musical  
features are introduced: Act 1.—Song and Dance by  
Blinker with chorus by the company. Act 3.—May  
Lovington in her great dancing specialties. Tiddie in  
Ballads. Act 4.—Policeman in tenor song.

PRICES 25c., 50c and 75 cents.

**Marshall's \* Mammoth \* Livery**

IS THE LARGEST AND THE OLDEST  
ESTABLISHMENT IN THE CITY.

DOES THE LEADING BUSINESS IN

Carriages, Cabs, Coupes, \*  
\* Victorias, Busses, Etc.

Every kind of Conveyance can be had there on the  
shortest notice, by Telephone No. 436.

**JAS. S. MARSHALL, Proprietor.**

Dundas Street. London, Ont.

LONDON  
**Bill Posting Agency**

BELTON & ROOTE, Proprietors.

**BILL POSTING**  
Distributing & General Advertising Agents

Controls all the Bill Boards and Dead Walls throughout  
the City. Population of City, 40,000.

All orders for Bill Posting, Distributing, Card Tackling  
and General Advertising for Western Ontario will  
receive prompt attention.

OFFICE: BOX OFFICE, OPERA HOUSE.

For Fashionable  
**WELL MADE SUITS**

... CALL ON ...

**Burns**

The Tailor,

Dundas Street.

**Artistic \* Floral \* Design**

EITHER WEDDING, PRESENTATION, DINNER TABLE, OR FUNERAL.

GO TO **DILLOWAY,**

The Leading Florist.

248 Dundas Street.

Choicest Cut Flowers Always on Hand.

TELEPHONE 587.

If you see it in the "London Free Press" it is so.

◀AFTER THE PERFORMANCE▶

—STOP AT—

**HARRY McKENNA'S,**

—FOR—

Choice Havana Cigars & \*  
\* \* Tobacco Sundries.

225 Dundas Street.

Always Open After Performance.

**SMITH BROS.**

Plumbers,

Steam and Gas Fitters.

ESTIMATES FURNISHED ON APPLICATION.

All Work Warranted. Terms Moderate.

376 RICHMOND STREET.  
(Opposite Masonic Temple.)

Telephone No. 538.

**THE TECUMSEH,**  
London, Ontario.



Leading Hotel of Western Ontario.

Large Sample Rooms Free of Charge.  
Baggage and Passenger Elevator.

Only one Block from the Grand Opera House.

**C. W. DAVIS,**  
PROPRIETOR.

White · Sulphur · Springs · Baths

FAMOUS HEALTH RESORT.

**The Saratoga of Canada.**

IN CONNECTION WITH THE HOTEL.

Great Attraction to Visitors Seeking Health.

C. W. DAVIS, Treasurer. A. D. HOLMAN, Manager.

+ THE LATEST ENGLISH +  
Collars, · Cuffs · and · Shirts.  
ALL SIZES ALWAYS IN STOCK.

**Burns**

DUNDAS STREET.

PROGRAMME CONTINUED.

Cast of Characters.

George Thornton, the Shadow Detective }  
Murty O'Brien, an Irish Policeman. .... } **DANIEL A. KELLY**  
Giovanna, an Italian ..... }  
Zach Bcantosser, a Yankee friend ..... }

Gerald Varley, cool and crafty ..... Granville B. Lane  
Tom Cuttle of the Mud Street Theatre ..... Geo. Allen

Geoffrey Trevelyan, a noble heart ..... J. E. Lane

Charles Clayton, his friend ..... A. W. Foster

Antonio Burcerelli ..... Harry Albaugh

Joe Maslin, the block signal station operator }  
Mateo, an Italian bum ..... } Fred Constantine

Tomasco Vitalli ..... Burcerelli's { J. Keller

Peradi ..... Slaves { A. Conrad

Leonie Clifton, a waif ..... Miss Helen Desmond

Mother Brooks, alias Clcra Meers ..... Miss Esther Gerben

Polly Sanderson, an actress ..... Miss Blanche Franklin

Little Bessie ..... Baby Barrows

During the evening, incidental to the stage performance, the Orchestra of the Grand Opera House, under the direction of MR. FRED L. EVANS, will perform the following selections :

OVERTURE—"Black Faces," ..... Hasfeld

FANTASIA—"Visions in a Dream," ..... Lunbey

OVERTURE—"Norma," ..... Bellini

GALOP—"Sounds from the Barnyard," ..... Ferruzzi

Programme Continued on Page 4.

—RECEIVED BY—

**BELTZ**

ENGLISH—LINCOLN AND BENNETT HAT

" WOODRUM HAT

" COOKSEY HAT

" STANLEY HAT.

AMERICAN—DUNLOP HAT

" MILLER'S HAT.

" YEONN'S HAT

Beltz's Spring Styles in Above Celebrated Makes.

THE LEADING JEWELRY HOUSE  
OF LONDON,

—FOR—

Diamonds, Watches, ·  
· · and Fine Jewelry.

OPERA GLASSES FOR RENT.

**THOS. GILLEAN,**

402 Richmond Street.

Issuer of Marriage Licenses.

For Fine Finished Artistic Photos

—GO TO—

**Westlake's** \*  
\* **Famous Studio**  
201 Dundas Street.

Get the Latest Novelties.

Photo Etchings and Aristo Finish.

STUDIO ALL ON GROUND FLOOR.

City Views can be had.

Phone 571.

**Wallace's Dining Hall**  
AND CONFECTIONERY.

354 Richmond Street.

Lunches at all hours.

Hot Tea and Coffee.

Oysters in every style.

Choice Cakes,

Candies, Etc.

GIVE US A CALL.

**OFFICE RESTAURANT**

Opposite the Masonic Temple, Richmond St.

CHOICE WINES,

LIQUORS, ALES,

CIGARS, ETC.

Restaurant on the European Plan.

OYSTERS IN EVERY STYLE.

D. SARE,

Proprietor.

Look out for the "London Free Press" on all early morning Trains.

## VASELINE.

EVERYBODY knows the great value of this remedy in the household, but everybody does not know that the imitations of it, which some second class druggists dishonestly palm off on their customers, have little or no value. What should be understood by the public is, that it is not a mere question of comparative value between "Vaseline" and the imitations, but that the imitations do not effect the wonderful healing results of the world renowned "Vaseline," and that they are not the same thing nor made in the same way. Besides this, many of the imitations are harmful, irritant and not safe to use, while true Vaseline is perfectly harmless.

Perfect safety therefore lies in buying only original packages put up by and marked with our name.

CHESEBROUGH MFG CO.

## FLOWERS

—FOR—

## OPERA OR BALL

—AT—

## GAMMAGE'S

Duffield Block, 213 Dundas Street.

FRESH EVERY DAY.

TELEPHONE 807.

# Coming!



## Gorman's

## Minstrels.

• • LADIES' TAILOR-MADE • •  
**COSTUMES & RIDING HABITS.**

# Burns

154 Dundas Street.

PROGRAMME CONTINUED.

### Synopsis.

ACT I.—Scene 1—In the shadow. Weaving the chain. The declaration. Scene 2—Tom and Polly's disagreement. Scene 3—Mother Brooks' d.n. The blinding. A terrible situation and tableau.

ACT II.—The illuminated church. A night service. Out in the snow.

ACT III.—The block tower signal station on the Pennsylvania R. R. Two trains coming at full speed from opposite directions, one of the greatest Railroad scenes ever produced.

ACT IV.—The home of the actress. The false plot. The detective and the scoundrel face to face.

ACT V.—At bay in Cleora's home. An old Yankee, but a true one. At last the game is won. The end of a criminal's life.

Open Glasses can be rented by applying to Ushers or at Box Office.

## \* THE PIANO \*

Used in the Orchestra is from the

## GERHARD HEINTZMAN Co.

69 and 75 Sherbourne St., Toronto.

LONDON WAREROOM: 226 DUNDAS STREET.

## W. T. STRONG,

## Dispensing \*

## \* \* Chemist

184 Dundas Street,

LONDON, . . . ONTARIO.

## Parisian Steam Laundry

73 and 75 DUNDAS ST.



Laundry work transferred free of charge to and from Toronto, Hamilton, Brantford, Woodstock, Stratford, Guelph, London, St. Thomas, Chatham, Windsor and Sarnia.

J. K. SPRY, Manager.

## FROM A HEN COOP TO A MANSION

Every person contemplating the erection of anything, from a hen coop to a mansion, should not fail to call and inspect our stock of

LUMBER,  
LATHS,  
SHINGLES,  
CEDAR POSTS,  
FLOORING and  
SIDING,  
DRESSED, &c.

PRICES RIGHT.

## Jas. H. Belton & Son

OFFICE AND YARDS:

241 YORK STREET

PHONE 688.



