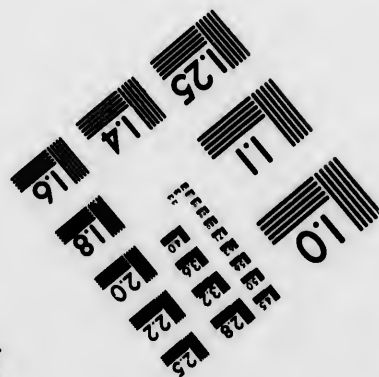
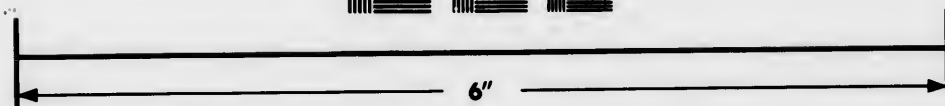
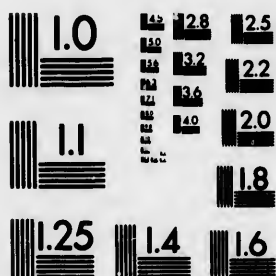


**IMAGE EVALUATION
TEST TARGET (MT-3)**



**Photographic
Sciences
Corporation**

23 WEST MAIN STREET
WEBSTER, N.Y. 14580
(716) 872-4503

**CIHM/ICMH
Microfiche
Series.**

**CIHM/ICMH
Collection de
microfiches.**



Canadian Institute for Historical Microreproductions / Institut canadien de microreproductions historiques

© 1982

Technical and Bibliographic Notes/Notes techniques et bibliographiques

The Institute has attempted to obtain the best original copy available for filming. Features of this copy which may be bibliographically unique, which may alter any of the images in the reproduction, or which may significantly change the usual method of filming, are checked below.

L'Institut a microfilmé le meilleur exemplaire qu'il lui a été possible de se procurer. Les détails de cet exemplaire qui sont peut-être uniques du point de vue bibliographique, qui peuvent modifier une image reproduite, ou qui peuvent exiger une modification dans la méthode normale de filmage sont indiqués ci-dessous.

- Coloured covers/
Couverture de couleur
- Covers damaged/
Couverture endommagée
- Covers restored and/or laminated/
Couverture restaurée et/ou pelliculée
- Cover title missing/
Le titre de couverture manque
- Coloured maps/
Cartes géographiques en couleur
- Coloured ink (i.e. other than blue or black)/
Encre de couleur (i.e. autre que bleue ou noire)
- Coloured plates and/or illustrations/
Planches et/ou illustrations en couleur
- Bound with other material/
Relié avec d'autres documents
- Tight binding may cause shadows or distortion
along interior margin/
La reliure serrée peut causer de l'ombre ou de la
distortion le long de la marge intérieure
- Blank leaves added during restoration may
appear within the text. Whenever possible, these
have been omitted from filming/
Il se peut que certaines pages blanches ajoutées
lors d'une restauration apparaissent dans le texte,
mais, lorsque cela était possible, ces pages n'ont
pas été filmées.
- Additional comments:/
Commentaires supplémentaires:

- Coloured pages/
Pages de couleur
- Pages damaged/
Pages endommagées
- Pages restored and/or laminated/
Pages restaurées et/ou pelliculées
- Pages discoloured, stained or foxed/
Pages décolorées, tachetées ou piquées
- Pages detached/
Pages détachées
- Showthrough/
Transparence
- Quality of print varies/
Qualité inégale de l'impression
- Includes supplementary material/
Comprend du matériel supplémentaire
- Only edition available/
Seule édition disponible
- Pages wholly or partially obscured by errata
slips, tissues, etc., have been refilmed to
ensure the best possible image/
Les pages totalement ou partiellement
obscurcies par un feuillet d'errata, une pelure,
etc., ont été filmées à nouveau de façon à
obtenir la meilleure image possible.

This item is filmed at the reduction ratio checked below/
Ce document est filmé au taux de réduction indiqué ci-dessous.

10X	12X	14X	16X	18X	20X	22X	24X	26X	28X	30X	32X
				✓							

The copy filmed here has been reproduced thanks to the generosity of:

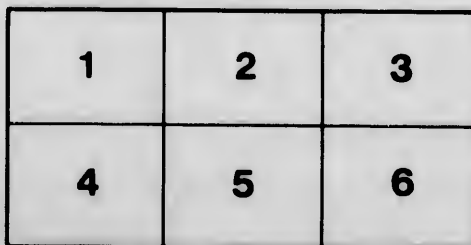
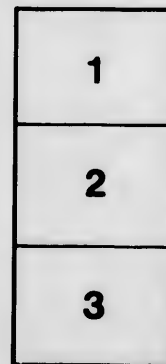
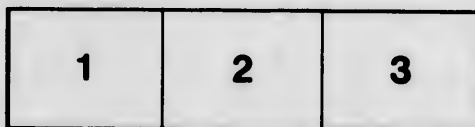
Library Division
Provincial Archives of British Columbia

The images appearing here are the best quality possible considering the condition and legibility of the original copy and in keeping with the filming contract specifications.

Original copies in printed paper covers are filmed beginning with the front cover and ending on the last page with a printed or illustrated impression, or the back cover when appropriate. All other original copies are filmed beginning on the first page with a printed or illustrated impression, and ending on the last page with a printed or illustrated impression.

The last recorded frame on each microfiche shall contain the symbol → (meaning "CONTINUED"), or the symbol ▼ (meaning "END"), whichever applies.

Maps, plates, charts, etc., may be filmed at different reduction ratios. Those too large to be entirely included in one exposure are filmed beginning in the upper left hand corner, left to right and top to bottom, as many frames as required. The following diagrams illustrate the method:



L'exemplaire filmé fut reproduit grâce à la générosité de:

Library Division
Provincial Archives of British Columbia

Les images suivantes ont été reproduites avec le plus grand soin, compte tenu de la condition et de la netteté de l'exemplaire filmé, et en conformité avec les conditions du contrat de filmage.

Les exemplaires originaux dont la couverture en papier est imprimée sont filmés en commençant par le premier plat et en terminant soit par la dernière page qui comporte une empreinte d'impression ou d'illustration, soit par le second plat, selon le cas. Tous les autres exemplaires originaux sont filmés en commençant par la première page qui comporte une empreinte d'impression ou d'illustration et en terminant par la dernière page qui comporte une telle empreinte.

Un des symboles suivants apparaîtra sur la dernière image de chaque microfiche, selon le cas: le symbole → signifie "A SUIVRE", le symbole ▼ signifie "FIN".

Les cartes, planches, tableaux, etc., peuvent être filmés à des taux de réduction différents. Lorsque le document est trop grand pour être reproduit en un seul cliché, il est filmé à partir de l'angle supérieur gauche, de gauche à droite, et de haut en bas, en prenant le nombre d'images nécessaire. Les diagrammes suivants illustrent la méthode.

ails
du
odifier
une
image

rrata
to

pelure,
n à



32X

NWp
971.947
V674a11

Victoria Lawn Tennis Club.

... THE NINTH ...

Annual Tournament

— 1895 —

Monday, 5th August, and following days.

OFFICERS OF THE CLUB :

President, E. MUSGRAVE.
Vice-President, REV. CANON BEANLANDS.
Hon. Secretary, E. A. JACOB.
Hon. Treasurer, HENRY F. MYTTON.

COMMITTEE :

VEN. ARCHDEACON SCRIVEN, G. H. BARNARD, F. O'REILLY,
C. C. WOLFOLD, J. F. FOULKES.

REFeree, E. MUSGRAVE.

The following Ladies have kindly consented to provide Tea during the
Tournament Week.

Monday, 5th August....Mrs. Beanlands	Thursday, 8th August...Mrs. Dunsmuir
Tuesday, 6th August.....Mrs. Pooley	Friday, 9th August.....Mrs. Ward
Wednesday, 7th " Mrs. Tyrwhitt Drake	Saturday, 10th August.....Mrs. Crease

THE COLONIST PRESSER.

PROVINCIAL ARCHIVES OF B. C.

Gentlemen's Singles (Handicap.)

COMMENCED 29TH JULY.

FIRST ROUND.

Best of three sets throughout. Advantage sets only in final round, or if one set all, in preliminary rounds.

Dr. R. H. J. Browne, R. N., receives ½ of 15.....	A Bye
Henry F. Mytton, receives 30.....	“
J. D. Pemberton, receives ½ of 30.....	“
H. W. F. Pollok, receives 15.....	“
R. Dunsmuir, receives ½ of 30.....	“
E. A. Jacob, scratch.....	“
H. Payne, receives ½ 15.....	“
C. R. Longe, owes 30.....	“
A. J. O'Reilly, receives ½ 30.....	“
G. E. Parkes, receives 15.....	“
H. B. Rogers, receives ½ of 15.....	“
P. S. Lampman, receives 15.....	“
Lindley Crease, receives ½ of 30.....	“
O. H. Van Millingen, receives 30.....	“
Comd'r A. Y. Moggridge, R. N., scratch.....	“
F. B. Pemberton, receives 30, <i>vs.</i> }	
J. A. Kithet, receives ½ of 30... }	
W. H. Langley, receives 15.....	“
A. P. Luxton, receives 30.....	“
H. R. Hopkins, receives 15.....	“
R. C. Gamble, receives 15.....	“
R. Harvey, receives ½ 30.....	“
Ven. Archdeacon Scriven, receives 30.....	“
A. Langley, receives ½ of 30.....	“
T. E. Pooley, receives ½ of 30.....	“
G. C. Johnston, receives ½ of 15.....	“
L. Kirk, scratch.....	“
G. H. Barnard, receives 15.....	“
J. F. Foulkes, owes 30.....	“
H. B. Haines, receives 15.....	“
B. H. T. Drake, receives ½ of 15.....	“
Capt. Macvey Napier, R. N., receives 15.....	“
C. C. Worsfold, scratch.....	“

Ladies' Open Singles.

CHAMPIONSHIP OF BRITISH COLUMBIA.

Best of three sets throughout. Advantage sets only in final round, or if one set all, in preliminary rounds.

Miss M. Drake (bye).
Miss Anderson, (Ladies L. T. C., Tacoma), (bye).
Mrs. Wm. V. Burrill, (Ladies L.T.C., Tacoma), <i>vs.</i> Mrs. W. T. Marvin.
Mrs. H. R. Shipster, <i>vs.</i> Miss Musgrave, (Duncan's).
Mrs. Leather, (Cowichan), <i>vs.</i> Miss Eastley, (Paignton, Eng.)
Miss M. Goward, <i>vs.</i> Miss Jessie Kershaw, (Ladies L. T. C., Tacoma.)
Miss S. Pemberton, (bye).
Miss Lilian Scott, (Ottawa), (bye).

Ladies' Doubles.

Best of three sets throughout. Advantage sets only in final round.

- Mrs. W. T. Marvin and Miss Eastley, (bye).
Mrs. G. E. Parkes and Miss Dickinson, (bye).
Miss Lillian Scott and Miss Essie Wright, (Ottawa,) (bye.)
Mrs. Wm. Burrill and Miss Kershaw *vs.* Miss Dunsmuir and Miss A. Pooley.
Mrs. Bramsdon and Mrs. Leather, (bye.)
Miss Anderson and Miss Keown, (Tacoma,) (bye.)
Mrs. Mayo, (Cowichan L. T. C.) and Miss Musgrave, (bye.)
Miss M. Drake and Miss H. Drake, (bye.)
-

Gentlemen's Open Singles.

CHAMPIONSHIP OF BRITISH COLUMBIA.

Best of three sets. Final round best of five sets. Advantage sets only in final round, or if one set all, in preliminary round.

- R. E. Barkley, (Cowichan L. T. C.) (bye.)
C. C. Worsfold, (bye.)
J. F. Foulkes, (bye.)
J. M. Miller *vs.* G. V. Cuppage.
C. R. Longe *vs.* E. J. Crickmay, (Vancouver.)
P. J. Fransioli, (Tacoma T. C.) *vs.* L. Pelly, (Olympic T. C.)
A. T. Goward *vs.* B. H. T. Drake.
L. Kirk *vs.* Lindley Crease.
Geo. C. Johnston *vs.* Harvey Combe.
R. C. Gamble *vs.* C. A. Goffin.
R. Harvey *vs.* E. A. Jacob.
G. Ainslie, (Saturna) *vs.* J. D. Pemberton.
H. W. F. Pollok *vs.* F. H. Stirling.
Lieut. F. H. Walter, R. N., (bye.)
Lieut. E. G. W. Davy, R. N., (bye.)
H. Payne, (Saturna, (bye.)
-

Gentlemen's Open Doubles.

Best of three sets. Final round best of five sets. Advantage sets only in final round, or if one set all, in preliminary rounds.

- P. J. Fransioli and A. W. Martin, (Tacoma T. C.) (bye.)
Harvey Combe, and L. Kirk, (bye.)
H. W. F. Pollok and J. A. Rithet, (bye.)
C. A. Goffin and G. E. Parkes, (bye.)
R. E. Barkley and C. R. Longe, (bye.)
Ven. Archdeacon Scriven and H. F. Mytton, (bye.)
E. A. Jacob and W. H. Langley *vs.* G. H. Barnard and P. S. Lampman.
R. C. Gamble and R. Harvey *vs.* L. Pelly and A. N. Other.
Comd'r A. Y. Moggridge, R. N. and Dr. R. J. H. Browne, R. N. *vs.*
T. E. Pooley and G. C. Johnston.
J. F. Foulkes and G. V. Cuppage, (bye.)
A. R. Green and G. D. Ward, R. N., (bye.)
H. Payne and G. Ainslie, (bye.)

R. Musgrave and L. T. Falls, (Cowichan L. T. C.) (bye.)
C. C. Worsfold and F. O'Reilly, (bye.)
H. B. Haines and J. M. Miller, (bye.)
Lieut. E. G. W. Davy, R. N., and Lieut. F. H. Walter, R. N., (bye.)

Ladies' and Gentlemen's Doubles (Open.)

Best of three sets throughout. Advantage sets only in final round, or if one set all, in preliminary rounds.

Miss Dunsmuir and R. Harvey, (bye.)
Mrs. Mayo and Dr. R. H. J. Browne, R. N., (bye.)
Miss Barkley and R. E. Barkley, (bye.)
Miss C. Powell and G. V. Cuppage, (bye.)
Mrs. Leather and R. Musgrave, (bye.)
Miss Musgrave and B. H. T. Drake, (bye.)
Miss Wright and G. C. Johnston *vs.* Miss M. Goward and A. T. Goward.
Miss Scott and E. A. Jacob *vs.* Miss Aspland and A. R. Green.
Miss Anderson and A. N. Other *vs.* Mrs. Moggridge and Comd'r A. Y. Moggridge, R. N.
Miss M. Green and G. D. Ward, R. N., *vs.* Miss Eastley and R. C. Gamble.
Mrs. Marvin and P. S. Lampman, (bye.)
Mrs. Wm. V. Burrill and A. W. Martin, (bye.)
Miss A. Pooley and T. E. Pooley (bye.)
Mrs. Bramsdon and Harvey Combe, (bye.)
Mrs Combe and C. R. Longe, (bye.)
Miss Cornwall and E. J. Crickmay, (bye.)

Ladies' and Gentlemen's Doubles (Club Handicap.)

Best of three sets throughout. Advantage sets only in final round, or if one set all, in preliminary rounds.

Mrs. Combe and C. R. Longe, (owe $\frac{1}{2}$ 15.) (bye.)
Miss M. Drake and W. H. Langley, (receive $\frac{1}{2}$ 30) *vs.* Miss Wright and E. A. Jacob, (receive 15)
Mrs. W. A. Ward and Dr R. J. H. Browne, R. N., (receive $\frac{1}{2}$ 30) *vs.* Miss Cornwall and G. C. Johnston, (receive $\frac{1}{2}$ 30.)
Miss H. Drake and F. O'Reilly, (receive 30) *vs.* Mrs. Moggridge and Comd'r A. Y. Moggridge, R. N., (receive 15.)
Miss C. Powell and R. C. Gamble, (receive $\frac{1}{2}$ 30) *vs.* Miss Eastley and P. S. Lampman, (receive $\frac{1}{2}$ 30.)
Miss Puckle and Harvey Combe, (Scratch) *vs.* Miss A. Pooley and J. F. Foulkes, (owe $\frac{1}{2}$ 15.)
Miss Dunsmuir and R. Harvey, (receive 30,) (bye.)
Miss S. Pemberton and J. D. Pemberton, (receive 30,) (bye.)

The Rules of the Lawn Tennis Association (England) will be observed.

Competitors will have to play on such courts, and at such times as the Committee may appoint. Players failing to appear at the appointed time will be disqualified.

In all cases of dispute the decision of the Referee will be final.

MRS. POOLEY has kindly consented to give away the Prizes on Saturday, after the matches are over.

Archives

British Columbia
O'REILLY
COLLECTION

