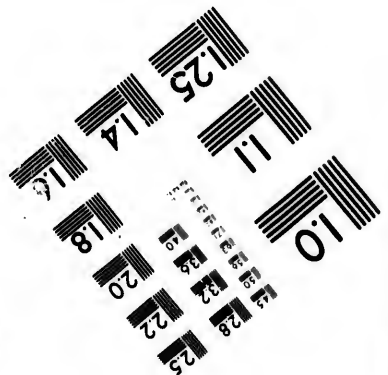
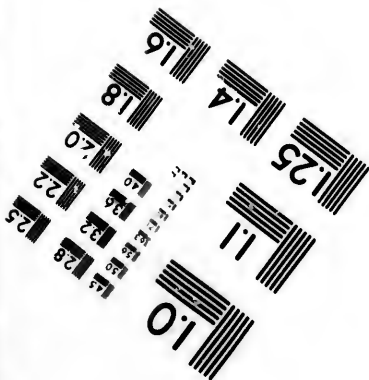
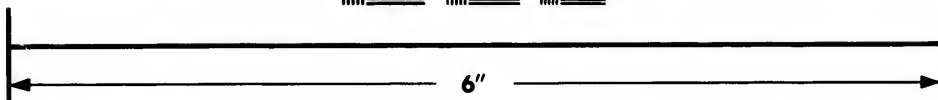
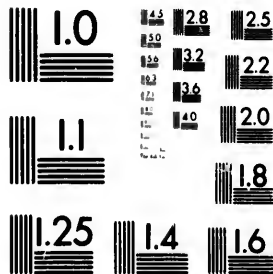


**IMAGE EVALUATION  
TEST TARGET (MT-3)**



**Photographic  
Sciences  
Corporation**

23 WEST MAIN STREET  
WEBSTER, N.Y. 14580  
(716) 872-4503

15 12.8  
13 12  
12 11.5  
11 11  
10 10.5  
9 10  
8 9.5

**CIHM/ICMH  
Microfiche  
Series.**

**CIHM/ICMH  
Collection de  
microfiches.**

11  
10  
9  
8  
7  
6  
5  
4  
3  
2  
1



Canadian Institute for Historical Microreproductions

Institut canadien de microreproductions historiques

**1980**

Technical and Bibliographic Notes/Notes techniques et bibliographiques

The Institute has attempted to obtain the best original copy available for filming. Features of this copy which may be bibliographically unique, which may alter any of the images in the reproduction, or which may significantly change the usual method of filming, are checked below.

L'Institut a microfilmé le meilleur exemplaire qu'il lui a été possible de se procurer. Les détails de cet exemplaire qui sont peut-être uniques du point de vue bibliographique, qui peuvent modifier une image reproduite, ou qui peuvent exiger une modification dans la méthode normale de filmage sont indiqués ci-dessous.

- Coloured covers/  
Couverture de couleur
- Covers damaged/  
Couverture endommagée
- Covers restored and/or laminated/  
Couverture restaurée et/ou pelliculée
- Cover title missing/  
Le titre de couverture manque
- Coloured maps/  
Cartes géographiques en couleur
- Coloured ink (i.e. other than blue or black)/  
Encre de couleur (i.e. autre que bleue ou noire)
- Coloured plates and/or illustrations/  
Planches et/ou illustrations en couleur
- Bound with other material/  
Relié avec d'autres documents
- Tight binding may cause shadows or distortion  
along interior margin/  
La reliure serrée peut causer de l'ombre ou de la  
distortion le long de la marge intérieure
- Blank leaves added during restoration may  
appear within the text. Whenever possible, these  
have been omitted from filming/  
Il se peut que certaines pages blanches ajoutées  
lors d'une restauration apparaissent dans le texte,  
mais, lorsque cela était possible, ces pages n'ont  
pas été filmées.
- Additional comments:/  
Commentaires supplémentaires:

- Coloured pages/  
Pages de couleur
- Pages damaged/  
Pages endommagées
- Pages restored and/or laminated/  
Pages restaurées et/ou pelliculées
- Pages discoloured, stained or foxed/  
Pages décolorées, tachetées ou piquées
- Pages detached/  
Pages détachées
- Showthrough/  
Transparence
- Quality of print varies/  
Qualité inégale de l'impression
- Includes supplementary material/  
Comprend du matériel supplémentaire
- Only edition available/  
Seule édition disponible
- Pages wholly or partially obscured by errata  
slips, tissues, etc., have been refilmed to  
ensure the best possible image/  
Les pages totalement ou partiellement  
obscurcies par un feuillet d'errata, une pelure,  
etc., ont été filmées à nouveau de façon à  
obtenir la meilleure image possible.

This item is filmed at the reduction ratio checked below/  
Ce document est filmé au taux de réduction indiqué ci-dessous.

10X	14X	18X	22X	26X	30X
<input type="checkbox"/>	<input type="checkbox"/>	<input type="checkbox"/>	<input checked="" type="checkbox"/>	<input type="checkbox"/>	<input type="checkbox"/>
12X	16X	20X	24X	28X	32X

The copy filmed here has been reproduced thanks to the generosity of:

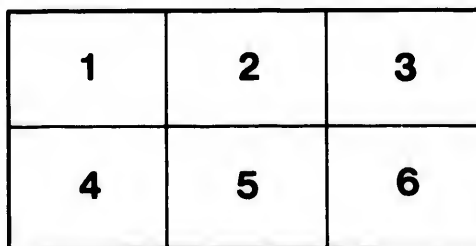
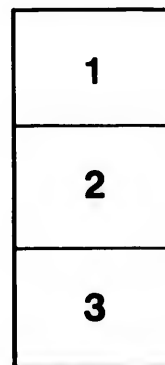
Library,  
Geological Survey of Canada

The images appearing here are the best quality possible considering the condition and legibility of the original copy and in keeping with the filming contract specifications.

Original copies in printed paper covers are filmed beginning with the front cover and ending on the last page with a printed or illustrated impression, or the back cover when appropriate. All other original copies are filmed beginning on the first page with a printed or illustrated impression, and ending on the last page with a printed or illustrated impression.

The last recorded frame on each microfiche shall contain the symbol  $\rightarrow$  (meaning "CONTINUED"), or the symbol  $\nabla$  (meaning "END"), whichever applies.

Maps, plates, charts, etc., may be filmed at different reduction ratios. Those too large to be entirely included in one exposure are filmed beginning in the upper left hand corner, left to right and top to bottom, as many frames as required. The following diagrams illustrate the method:



L'exemplaire filmé fut reproduit grâce à la générosité de:

Bibliothèque,  
Commission Géologique du Canada

Les images suivantes ont été reproduites avec le plus grand soin, compte tenu de la condition et de la netteté de l'exemplaire filmé, et en conformité avec les conditions du contrat de filmage.

Les exemplaires originaux dont la couverture en papier est imprimée sont filmés en commençant par le premier plat et en terminant soit par la dernière page qui comporte une empreinte d'impression ou d'illustration, soit par le second plat, selon le cas. Tous les autres exemplaires originaux sont filmés en commençant par la première page qui comporte une empreinte d'impression ou d'illustration et en terminant par la dernière page qui comporte une telle empreinte.

Un des symboles suivants apparaîtra sur la dernière image de chaque microfiche, selon le cas: le symbole  $\rightarrow$  signifie "A SUIVRE", le symbole  $\nabla$  signifie "FIN".

Les cartes, planches, tableaux, etc., peuvent être filmés à des taux de réduction différents. Lorsque le document est trop grand pour être reproduit en un seul cliché, il est filmé à partir de l'angle supérieur gauche, de gauche à droite, et de haut en bas, en prenant le nombre d'images nécessaire. Les diagrammes suivants illustrent la méthode.

ails  
du  
difier  
une  
nage

rrata  
o

pelure,  
n à

DO.

UNITED STATES GEOLOGICAL SURVEY

J. W. POWELL DIRECTOR

---

ELEVATIONS

IN THE

DOMINION OF CANADA

BY

J. W. SPENCER



WASHINGTON  
GOVERNMENT PRINTING OFFICE  
1884

SIR: I  
tion, almo  
tario and  
and canal  
in the reg

I ha

Hon. J.  
*Dir*

LETTER OF TRANSMITTAL.

---

COLUMBIA, MO., *January, 1884.*

SIR: I have the honor herewith of transmitting to you, for publication, almost all of the more important elevations in the provinces of Ontario and Quebec, in Canada, which have been ascertained by railway and canal surveys, completed at the close of the year 1882. Especially in the region between the Great Lakes is the record nearly complete.

I have the honor, sir, to be your obedient servant,

J. W. SPENCER.

Hon. J. W. POWELL,

*Director of the United States Geological Survey.*



The problem  
cal scienc  
the West  
tudes co  
tain the  
1876 and  
the railr  
many of  
subsequ  
pened th  
even alt

The el  
Welland  
mination  
Subtract  
mean oce  
given by  
level.

The O  
tario, to  
of the Sa  
level is 1.

Since t  
Company  
other Can  
as divisio

## PREFACE.

---

The knowledge of accurate levels in the study of many geological problems is growing to be as necessary as the balance has been in chemical science. In my various studies of the "Geology of the Region about the Western End of Lake Ontario," the necessity of having accurate altitudes compelled me to collect many railway levels, and often to ascertain the altitudes of other points myself. The result was that between 1876 and 1882 I had collected, with much trouble, the altitudes of all the railroads whose profiles were in existence. Owing to the fact that many of the smaller roads had been constructed independently, and subsequently united with larger organizations, it not infrequently happened that their profiles were buried away in some obscure office, or even altogether lost.

The elevation of Lake Erie above Lake Ontario, by the levels of the Welland Canal, is 326.75 feet. The United States Lake Survey's determination of the height of Lake Erie above mean ocean level is 572.86 feet. Subtracting the one from the other, the elevation of Lake Ontario above mean ocean level would be 246.11 feet. The elevation of Lake Ontario, given by the United States Lake Survey, is 246.61 feet above mean ocean level.

The Canadian survey levels have been referred to either Lake Ontario, to Lake Erie, or to Lake Saint Peter. The latter is an expansion of the Saint Lawrence River, to which high tide reaches, and its mean level is 11 feet above the mean level of the ocean.

Since these tables were compiled in 1882, the Grand Trunk Railway Company has absorbed the Great Western Railway and most of the other Canadian lines, but their original names are everywhere retained as divisions or branches of the Grand Trunk Railway.

Letter of T

Preface . . . .

Profiles . . . .

Great W

Welling

Welland

Hamilton

Northern

Toronto

Credit V

Canada

Grand T

Toronto

Midland

Ontario

Saint La

Saint La

Ottawa

Quebec,

List of Eleva

## TABLE OF CONTENTS.

---

	Page
Letter of Transmittal .....	5
Preface .....	7
Profiles .....	11
Great Western Railway .....	11
Wellington, Grey and Bruce Railway .....	15
Welland Railway .....	17
Hamilton and Northwestern Railway .....	17
Northern Railway .....	18
Toronto, Grey and Bruce Railway .....	20
Credit Valley Railway .....	21
Canada Southern Railway .....	22
Grand Trunk Railway .....	23
Toronto and Nipissing Railway .....	29
Midland Railway .....	29
Ontario and Quebec Railway .....	31
Saint Lawrence and Ottawa Railway .....	32
Saint Lawrence River .....	33
Ottawa River and Rideau Navigation Co .....	33
Quebec, Montreal, Ottawa and Occidental Railway .....	33
List of Elevations in Canada .....	35

EL

---

Distance  
from Niagara Falls

---

0.0  
2.8  
2.8  
324.8  
9.18  
9.38  
10.61  
10.70  
11.10  
14.20  
15.34  
15.45  
16.95  
17.23  
22.60  
23.50  
31.72  
37.22  
43.33  
45.02  
49.00  
49.41  
  
49.53  
49.53  
49.73  
51.70  
53.75  
54.73  
54.92  
59.09  
61.84  
  
62.25  
62.25  
64.01  
64.01  
67.23

# ELEVATIONS IN THE DOMINION OF CANADA.

BY J. W. SPENCER.

## RAILROAD PROFILES.

### GREAT WESTERN RAILWAY, MAIN LINE.

Distance from Niagara Falls.	Localities.	Elevation above Lake Ontario.	Elevation above mean tide.
		Feet.	Feet.
	Niagara River:		
	East side of cañon .....	300	547
	West side of cañon .....	308	555
0.00	Niagara Falls, Ontario .....	326	573
2.84	Track .....	362	609
2.84	Summit (sand and gravel) .....	386	633
324.84	St. David's valley, track over .....	292	539
9.19	Meritton .....	143	390
9.39	Welland canal crossing .....	142	389
10.61	.....	120	367
10.70	Bed of creek .....	90	237
11.10	St. Catharine's .....	110	357
14.96	Bed of Fifteen-Mile creek .....	00	247
15.34	Sixteen-Mile creek .....	-4	243
15.45	.....	65	312
16.95	Jordan station .....	64	311
17.23	Twenty-Mile creek, bed .....	-8	239
22.69	Beamsville station .....	47	294
26.60	Grimsby station .....	40	287
31.72	Winona station .....	38	285
37.92	Stony Creek station .....	28	275
43.33	Hamilton station .....	8	255
45.02	Toronto Branch junction .....	58	305
49.00	Mile post .....	234	481
49.41	Summit of gravel ridge (original surface) ... Spencer's creek :	308	555
49.53	Bed .....	160	407
49.53	Track .....	260	507
49.73	Dundas station .....	270	517
51.70	Flamboro' station (old) .....	368	615
53.75	Summit of drift hills .....	620	767
54.73	Copetown station .....	502	749
54.92	Bed of Elliot's pond .....	475	722
59.09	Lynden station .....	504	751
61.84	Bed of valley .....	415	662
	Harrisburg station :		
62.25	Track .....	487	734
62.25	Original ground .....	504	751
64.01	Fairchild's creek, bridge .....	480	727
64.01	Do. do. bed .....	480	667
67.23	.....	595	842

Great Western, main line—Continued.

Distance from Niagara Falls.	Localities.	Elevation above Lake Ontario.	Elevation above mean tide.
Miles.		Feet.	Feet.
69.50	Grand river:		
69.92	East side .....	577	824
72.06	Bed .....	495	742
74.90	West side .....	577	824
75.19	Paris station .....	595	842
75.23	Bed of valley of Nith's creek .....	610	857
	.....	550	797
	.....	620	867
78.98	Princeton station .....	685	932
79.92	Horner's Creek, bed .....	635	882
84.00	Governor's Road, siding .....	720	967
86.27	Eastwood station .....	726	973
87.69	Summit .....	775	1,022
90.72	Woodstock station .....	710	957
95.55	Beechville station .....	660	907
100.00	Ingersoll station .....	632	879
109.66	Dorchester station .....	605	852
119.28	London, Richmond street .....	559	806
	Thames River:		
119.50	East side .....	553	800
	Bed .....	507	754
119.73	West side .....	560	807
	Cove of Thames:		
120.17	East side .....	550	797
120.64	Bottom .....	505	752
122.82	West side .....	680	927
129.17	Komoka station .....	564	811
139.96	Longwood station .....	505	752
142.50	Canada Southern railroad crossing .....		
144.89	Oppin station .....	496	743
149.62	Glencoe station .....	483	730
155.87	Newbury station .....	455	702
160.70	Bothwell station .....	444	691
169.51	Thamesville bridge .....	376	623
169.51	bed of river .....	340	587
174.34	Lewisville station .....	368	615
183.33	Chatham station .....	351	598
198.11	Baptist Creek station .....	348	595
202.84	Stoney Point station .....	340	587
211.66	Bell river, bed .....	320	567
220.81	Tecumseh station .....	343	590
228.82	Windsor station .....	335	582

GREAT WESTERN RAILWAY—TORONTO BRANCH.

Distance from Hamilton Station.	Localities.	Elevation above Lake Ontario.	Elevation above mean tide.
Miles.		Feet.	Feet.
0.00	Hamilton station .....	8	255
1.62	Toronto junction .....	58	306
2.15	Track over old outlet of Dundas marsh .....	82	329
2.15	Piles driven in marsh to below lake Ontario .....	—40	207
4.06	Waterdown station, ground .....	98	345
4.57	Lake Terrace (Ballast Hill) .....	118	365
7.02	Burlington station .....	93	340

Distance from Hamilton Station

Miles.

12.9  
12.9  
13.5  
17.0  
17.5  
20.6

24.4

25.88  
29.30  
29.30  
32.19  
32.69  
39.00

Distance from Harri- burg junction.

Miles.

0.00  
0.75  
7.31

8.14

8.14

12.60

15.57

17.30

21.00

28.08

34.90

39.12

40.25

42.75

Distance from Lon- don.

Miles.

0.00  
4.22  
10.00

## Toronto branch—Continued.

Distance from Hamilton Station.	Localities.	Elevation above Lake Ontario.	Elevation above mean tide.
Miles.		Feet.	Feet.
	Twelve-Mile creek:		
	Track .....	98	345
	Bed of creek .....	29	276
	Bronté station .....	99	346
	Bed of creek .....	6	253
	Oakville station .....	93	340
	.....	104	351
	Credit valley:		
	South side .....	36	283
	Piles driven to .....	-20	227
	North side .....	34	281
	Track .....	55	312
	Bed of valley .....	10	257
	Mimico station .....	60	307
	Mimico river, bed .....	-2	245
	Toronto station .....	8	255

## G. W. R.—BRANTFORD AND TILSONBURG LINE. ✓

Distance from Harrisburg junction.	Localities.	Elevation above Lake Ontario.	Elevation above mean tide.
Miles.		Feet.	Feet.
	Harrisburg junction .....	487	734
	Fairchild's creek, bed .....	412	659
	G. T. R. crossing .....	439	686
	Brantford:		
	Bridge over Grand river .....	412	659
	Bed of Grand river .....	398	645
	Mount Pleasant station .....	563	810
	Mount Vernon station .....	592	839
	Burford station .....	597	844
	Harley station .....	590	837
	Norwich station .....	597	844
	Springford station .....	575	822
	Tilsonburg:		
	Canada Southern railway crossing .....	550	797
	Station .....	538	786
	Junction .....	.....	.....

## G. W. R.—SARNIA BRANCH.

Distance from London.	Localities.	Elevation above Lake Ontario.	Elevation above mean tide.
Miles.		Feet.	Feet.
	London station .....	559	806
	Hyde Park junction .....	639	886
	Komoka junction .....	575	822



*Sarnia branch—Continued.*

Distance from London.	Localities.	Elevation above Lake Ontario.	Elevation above mean time.
<i>Miles.</i>		<i>Feet.</i>	<i>Feet.</i>
20.23	Strathroy station .....	500	747
	Do. Sydenham river, bed .....	475	722
33.38	Watford station .....	540	787
41.81	Wanstead station .....	455	702
45.38	Wyoming station .....	465	712
51.10	Mandamin station .....	400	647
60.89	Sarnia (near lake Huron) .....	342	589

G. W. R.—LONDON AND PORT STANLEY BRANCH. ✓

Distance from Port Stanley.	Localities.	Elevation above Lake Ontario.	Elevation above mean tide.
<i>Miles.</i>		<i>Feet.</i>	<i>Feet.</i>
0.00	Port Stanley, level of lake Erie .....	327	574
3.70	.....	443	690
4.55	Kettle Creek bridge .....	488	735
7.87	Saint Thomas station .....	511	758
16.18	Summit of track .....	673	920
23.58	London .....	567	814

G. W. R.—LONDON, HURON AND BRUCE BRANCH. ✓

Distance from London.	Localities.	Elevation above Lake Ontario.	Elevation above mean tide.
<i>Miles.</i>		<i>Feet.</i>	<i>Feet.</i>
0.00	London (Richmond st.) .....	559	806
4.22	Hyde Park junction .....	639	886
11.22	Ilderton station .....	690	937
15.58	Brecon station .....	653	900
19.22	An Sable river, track .....	624	871
	Do. do. bed .....	598	845
20.69	Clandeboye station .....	641	888
26.50	Centralia station .....	620	867
31.11	Exeter station .....	628	875
37.17	Hensall station .....	652	899
43.23	Brucefield station .....	643	890
50.06	Clinton station .....	672	919
56.20	Maitland river, bed .....	695	942
56.86	Londesborough station .....	727	974
60.80	Blyth station .....	834	1,081
62.55	Summit .....	877	1,124
67.23	Belgrave station .....	815	1,062
72.06	Bed of valley .....	765	1,012
74.00	Wingham station .....	834	1,081

Distance from Glen-  
coe junc-  
tion.

*Miles.*  
0.00  
11.70  
11.70  
15.20  
26.75

28.00  
37.75  
46.20  
52.00  
53.25  
56.50

63.00  
63.00  
64.25  
73.00  
83.50  
92.00  
96.00  
96.60  
103.20  
123.00  
125.75  
128.50  
136.00  
142.75  
145.40

WELLINGTON

Distance from Harris-  
burg junc-  
tion.

*Miles.*  
0.00  
2.40  
6.13  
11.82  
16.00  
17.72  
19.07  
19.38  
27.33

*London, Huron and Bruce branch—Continued.* ✓

Distance from Glencoe junction.	Localities.	Elevation above Lake Ontario.	Elevation above mean tide.
Miles.		Feet.	Feet.
0.00	Glencoe junction .....	481 48.	728
	Thames river:		
	Track .....	453	700
11.70	Bed .....	383	630
11.70	Lawrence (near) .....	495	742
15.20	Kettle creek:		
	Bridge .....	500	747
	Bed of .....	420	667
26.75	St. Thomas (near) .....	520	767
28.00	Aylmer (near) .....	514	761
37.75	Corinth station .....	520	767
46.20	Otter creek, bed of .....	404	651
52.00	Tilsonburg (near) .....	538	785
53.25	Cortland (near) .....	529	776
56.50	Big Creek:		
	Track .....	515	762
63.00	Bed of .....	424	671
63.00	Delhi (near) .....	548	795
64.25	Simcoe station .....	472	719
73.00	Jarvis station .....	454	701
83.50	.....	468	715
92.00	Grand river bridge, near Cayuga station .....	368	615
96.00	Bed of Grand river .....	324	571
96.60	G. T. R. crossing .....	369	616
103.20	Frank's creek .....	328	575
123.00	Welland canal feeder .....	339	586
125.75	Welland railway crossing .....	330	577
128.50	Stevensville station .....	345	592
138.00	Erie and Niagara railway crossing .....	348	595
142.75	Niagara river .....	325	572
145.40			

7

WELLINGTON, GRAY AND BRUCE RAILWAY COMPANY, OPERATED BY THE G. W. R. CO. ✓

Distance from Harrisburg junction.	Localities.	Elevation above Lake Ontario.	Elevation above mean tide.
Miles.		Feet.	Feet.
	Harrisburg, junction with main line of G. W. R. ....		
0.00	Fairchild's creek (Dumfries branch), track ..	487	734
2.40	Branchton station .....	513	760
6.13	Galt station .....	650	897
11.82	Preston station .....	641	888
16.00	Ballast Hill .....	680	927
17.72	Speed river, track .....	718	965
19.07	Heapeler station .....	626	933
19.38	Guelp station .....	695	942
27.33		832	1,079

8

Wellington, Grey and Bruce railway—Continued.

Distance from Guelph.	Localities.	Elevation above Lake Ontario.	Elevation above mean tide.
Miles.		Feet.	Feet.
0.00	Guelph station .....	832	1,078
8.70	Hurst's creek, bed .....	902	1,149
	Swan creek:		
11.02	Track .....	970	1,217
11.02	Bed .....	911	1,158
13.31	Elora station .....	1,050	1,297
	Do. Grand river:		
14.75	East side .....	1,080	1,327
	Bed .....	992	1,239
16.00	Fergus station .....	1,111	1,358
	Irwine river:		
19.00	East side .....	1,135	1,382
	Bed .....	1,074	1,321
24.60	Summit .....	1,235	1,482
27.30	Goldstone station .....	1,214	1,461
31.10	Drayton station .....	1,147	1,394
35.00	Moorefield station .....	1,104	1,351
42.10	Palmerston station .....	1,067	1,314
47.80	Harriston station .....	1,017	1,264
54.23	Clifford station .....	987	1,234
63.23	Mildmay station .....	783	1,030
69.01	Walkerton station .....	686	933
77.80	Pinkerton station .....	614	861
84.29	Paisley station .....	529	776
	Tecumseh river:		
84.61	Bed .....	462	709
84.61	Track over .....	525	772
97.00	Port Elgin station .....	428	675
101.14	Southampton station .....	369	616
101.30	Do. Lake Huron, Aug., 1872 .....	335	582

W. G. & B. R.—SOUTH EXTENSION.

Distance from Palmerston.	Localities.	Elevation above Lake Ontario.	Elevation above mean tide.
Miles.		Feet.	Feet.
0.00	Palmerston station .....	1,067	1,314
5.62	Gowanstown station .....	1,038	1,285
8.71	Listowel station .....	1,016	1,263
14.68	Newry station .....	957	1,204
18.81	Hemfryn siding .....	919	1,166
21.78	Ethel station .....	927	1,174
27.35	Brussels station .....	875	1,122
30.00	Gravel bed .....	848	1,095
34.15	Bluevale station .....	832	1,079
35.00	Maitland river, bed .....	797	1,044
37.22	Wingham station .....	835	1,082
38.54	Maitland river, bed .....	757	1,004
43.64	Kinloss (Whitechurch) station .....	799	1,046
50.00	Lucknow station .....	663	910
57.00	Pine river, bed .....	536	783
58.18	Ripley siding .....	560	807
66.38	Kincardine station .....	343	590
66.41	Kincardine, Lake Huron .....	335	582

Luko Ontar  
Saint Cath  
G. W. R. cro  
Thorold stat  
Allanburg st  
Port Robins  
Welland riv  
Welland stat  
Port Colboru  
Lake Erie...

NOTE.—All obtained from reduced to a The elevati of the natura of surface ran

Distance from Port Dover.

Miles.  
0.00  
0.15  
8.90  
14.80  
15.96  
21.00  
23.30  
  
23.56  
23.75  
24.31  
26.90  
28.01  
29.69  
34.95  
39.18  
  
40.00  
42.00  
48.50  
50.00  
51.50  
57.40  
63.25  
76.00  
78.50  
93.00

WELLAND RAILWAY—OPERATED BY G. W. R.

Localities.	Elevation above Lake Ontario.	Elevation above mean tide.
	Feet.	Feet.
Lake Ontario .....		247
Saint Catherine's, old station .....	128	375
G. W. R. crossing .....	210	457
Thorold station .....	306	553
Allanburg station .....	345	592
Port Robinson station .....	342	589
Welland river bed .....	322	569
Welland station .....	355	692
Port Colborn station .....	339	586
Lake Erie .....	330	577

NOTE.—All the elevations along the Great Western railway and its branches were obtained from the various profiles, through the kindness of the chief engineer, and reduced to a common datum.

The elevations given are those of track when opposite the station; elsewhere those of the natural ground have been adopted. The above tables cover most undulations of surface ranging more than 20 or 30 feet in height.

HAMILTON AND NORTHWESTERN RAILWAY.

Distance from Port Dover.	Location.	Elevation above Lake Ontario.	Elevation above mean tide.
Miles.		Feet.	Feet.
0.00	Lake Erie, at Port Dover .....	328	575
0.15	.....	380	627
8.90	Jarvis, Loop Line crossing .....	452	699
14.80	.....	483	730
15.96	Hagersville (near) .....	449	696
21.00	.....	382	629
23.30	.....	438	685
	Grand river at Seneca :		
23.56	South bank .....	405	652
	Bed .....	365	622
23.75	North bank .....	397	644
24.31	Seneca crossing of plank road .....	406	653
26.20	.....	439	686
28.01	Chippewa creek .....	424	671
29.69	Summit .....	493	740
34.95	Brow of Niagara escarpment .....	396	643
39.18	Hamilton :		
	Wentworth street, south .....	130	377
40.00	Station (King street) .....		
	Barton street .....	30	277
42.00	Wentworth street, north .....	19	266
48.50	Burlington, beach (Ocean House) .....	8	255
50.00	do. station .....	6	253
51.50	do. G. W. R. crossing .....	71	318
57.40	.....	276	523
63.25	Milton station .....	414	631
76.00	Georgetown (gravel bed) .....	644	891
78.50	Glen Williams .....	683	910
93.00	Caledon (sand bed near) .....	695	942

*Hamilton and Northwestern Railway—Continued.*

Distance from Port Dover.	Location.	Elevation above Lake Ontario.	Elevation above mean tide.
<i>Miles.</i>		<i>Feet.</i>	<i>Feet.</i>
100.20	Summit north of Palgrave.....	722	969
111.50	Beeton junction .....	469	716
120.60	Everett station .....	549	796
129.20	Glencairn station .....	491	738
139.50	Summit.....	805	1052
143.00	Duntroon station .....	689	936
147.60	Nottawa station .....	460	707
150.20	Collingwood station .....	342	589
	.....do.....lake Huron.....	331	578
0.00	Beeton junction, on branch .....	469	716
12.50	Thornton station .....	695	942
14.00	Summit station .....	751	998
22.30	Allandale station .....	508	755
26.00	Barrie station .....	625	872
	Barrie, Lake Simcoe.....	475	722

NOTE.—South of Hamilton, elevations refer to original ground. North of Hamilton reference is to track.

NORTHERN RAILWAY—MAIN LINE.

Distance from Toronto.	Localities.	Elevation above Lake Ontario.	Elevation above mean tide.
<i>Miles.</i>		<i>Feet.</i>	<i>Feet.</i>
0.00	Lake Ontario, at Toronto.....	00	247
7.00	Gravel pit .....	204	451
8.12	Weston station .....	337	584
12.33	York station.....	425	672
14.50	Thornhill station.....	386	633
19.00	Richmond Hill (Gravel pit) .....	600	847
22.75	King station .....	708	955
26.60	Summit.....	755	1,002
34.30	Newmarket station .....	525	772
38.00	Holland Landing .....	496	743
41.00	.....do river .....	478	725
42.00	Bradford station .....	478	725
44.50	Scanbons station.....	494	741
49.00	Gilford station.....	506	753
52.00	Lefroy station.....	532	779
53.00	Gravel ridge.....	520	767
57.00	Bramley station.....	641	888
57.75	Craigvale station.....	632	879
61.50	Thompson station.....	545	792
62.50	Gravel pit .....	520	767
63.00	Allandale (near Barrie).....	491	738
63.00	Lake Simcoe.....	475	722
68.75	Colwell junction .....	503	750
72.75	Nottawasaga river .....	380	627
73.50	Angus (Pine river) .....	380	627
74.50	Gravel ridge .....	389	636
77.60	Brentwood station .....	400	647
80.00	Sunnidale station.....	375	622
86.00	Stayner station .....	470	717

Distance from Toronto.

*Miles.*  
94.70  
94.70  
100.00  
106.10  
107.00  
112.00  
115.00

Distance from Toronto.

*Miles.*  
64.12  
64.20  
68.30  
70.00  
71.20  
78.20  
81.00  
82.50  
86.30  
88.50  
94.00  
95.00  
98.00  
99.00  
99.50  
100.50  
100.50  
100.70  
102.40  
104.40  
106.20  
108.00  
109.30  
111.30  
112.40

*Northern Railway—Main Line—Continued.*

Distance from Toronto.	Location.	Elevation above Lake Ontario.	Elevation above mean tide.
<i>Miles.</i>		<i>Feet.</i>	<i>Feet.</i>
94. 70	Collingwood station .....	343	590
94. 70	...do... Lake Huron .....	337	584
100. 00	Craigleith station .....	344	591
106. 10	Gravel pit .....	354	601
107. 00	Thornbury station .....	365	612
112. 00	Summit .....	510	757
115. 00	Meaford station .....	427	674

NORTHERN RAILWAY—MUSKOKA BRANCH. ✓

Distance from Toronto.	Localities.	Elevation above Lake Ontario.	Elevation above mean tide.
<i>Miles.</i>		<i>Feet.</i>	<i>Feet.</i>
64. 12	Barrie (Lake Simcoe) .....	475	722
64. 20	...do... station .....	479	728
66. 30	Kempenfeldt .....	510	757
70. 00	Gowan .....	572	819
71. 20	Summit .....	593	840
78. 20	Hawkestone .....	532	779
81. 00	...do... .....	575	822
82. 50	Gravel pit .....	483	730
86. 30	Orillia .....	479	726
88. 50	Narrows of Lake Couchouching .....	486	733
94. 00	Longford station .....	489	736
95. 00	.....	519	766
98. 00	Severn river, east branch .....	483	730
99. 00	Washago .....	482	729
99. 50	Severn river, west branch .....	485	732
100. 50	...do... station .....	478	725
100. 50	...do... station (water) .....	464	711
100. 70	...do... river .....	.....	.....
1,002	Gravel pit .....	480	727
772	.....	369	616
743	Lothbridge station .....	509	756
725	Rock pass .....	530	777
725	Summit .....	605	852
741	Gravenhurst station .....	572	819
753	Muskoka lake .....	500	747

(469)

vation  
re mean  
ide.

Feet.

969  
716  
796  
738  
1052  
936  
707  
589  
578

716  
942  
998  
755  
872  
722

Hamilton

levation  
ove mean  
tide.

Feet.

247  
451  
584  
672  
633  
847  
955  
1,002  
772  
743  
725  
725  
741  
753  
779  
787  
888  
879  
792  
767  
738  
722  
750  
627  
627  
636  
647  
622  
717

70

15

NORTHERN RAILWAY—PARRY SOUND BRANCH. /

Distance from Colwell junction.	Localities.	Elevation above Lake Ontario.	Elevation above mean tide.
<i>Miles.</i>		<i>Feet.</i>	<i>Feet.</i>
0.00	Colwell junction (68.75 miles from Toronto) ..	503	750
3.71	.....	457	704
4.15	Sand pit .....	451	698
7.58	Minessing station .....	372	619
11.04	Sand bed .....	490	737
15.78	Phelpston station .....	477	724
22.63	Marsh, track over .....	440	687
25.95	Wyeville station .....	525	772
30.36	Summit of branch .....	544	791
35.61	Penetanguishene station .....	342	589

16

The Hamilton and Northwestern Railway Company and the Northern Railway Company are now amalgamated. The levels of both roads were furnished through the kindness of Mr. Harry Holgate, assistant engineer of the united roads. The levels from Lake Erie to Hamilton, were obtained from the chief engineer during the construction before the stations were located. The altitudes of the stations on Northern Railway refer to track.

TORONTO, GREY AND BRUCE RAILWAY.

Distance from Toronto.	Localities.	Elevation above Lake Ontario.	Elevation above mean tide.
<i>Miles.</i>		<i>Feet.</i>	<i>Feet.</i>
0.00	Toronto station .....	8	255
2.25	do...Queen Street junction .....	57	304
5.00	Carlton (sand and gravel bed) .....	160	407
8.50	Weston station .....	182	429
14.00	Sand and gravel bed .....	280	527
	Humber valley:		
14.50	East side .....	268	515
15.20	Bridge .....	224	471
16.20	West side .....	311	558
18.00	Woodbridge station .....	370	617
21.50	Sand and gravel bed .....	468	713
26.30	Kleinburg .....	591	838
32.75	Bolton station .....	729	976
34.00	Mono Road .....	710	957
37.00	Gravel bed .....	990	1,237
38.75	do .....	1,130	1,377
41.25	Charleston station (gravel bed near by) .....	1,120	1,367
44.60	Alton station .....	1,051	1,295
48.60	Orangeville station .....	1,151	1,393
52.50	do .....	1,369	1,616
55.00	Sand and gravel bed .....	1,340	1,587
64.50	Shelburne station .....	1,382	1,629
75.80	Dundalk station .....	1,454	1,701
76.20	Summit .....	1,462	1,709
81.00	Proton station .....	1,366	1,613
86.00	Flesherton (adjacent sand and gravel bed) ..	1,310	1,557
93.00	Markdale station .....	1,112	1,359
98.00	Berkloy station .....	1,082	1,329

17

52.60
56.50
58.50
61.80
68.70
72.50
79.00
84.00
86.00
87.00
91.00
94.70
103.00
108.00
110.00
120.00

Elevations, Wragg, Esq.,

0.00
6.80
9.90
14.20
17.40
20.40
32.10
38.70
51.70
57.20
57.20
67.20
72.10
74.30
78.60
81.60
87.80

*Toronto, Grey and Bruce Railway—Continued.*

Elevation above mean tide.	Distance from Toronto.	Localities.	Elevation above Lake Ontario.	Elevation above mean tide.
Feet.	Miles.		Feet.	Feet.
750	100.00	Gravel (deposits for several miles) .....	1,000	1,247
704	102.00	Williamsford station .....	965	1,212
698	108.80	Speed river .....	700	947
619	109.00	Chatsworth station (gravel beds) .....	697	944
737	111.00	Sydenham river .....	690	937
724	114.20	Rockford station .....	655	912
687		Owen sound:		
772	120.80	Station .....	339	586
791		Georgian bay .....	335	582

ALONG WEST BRANCH.

52.60	Orangeville junction .....	1,339	1,616
56.50	Amaranth station (sand and gravel) .....	1,299	1,546
58.50	Waldemar station .....	1,248	1,435
61.80	Luther station .....	1,297	1,544
68.70	Summit .....	1,332	1,579
72.50	Arthur .....	1,278	1,525
79.00	Kenilworth .....	1,239	1,486
84.00	Sand and gravel bed .....	1,130	1,377
86.00	do .....	1,130	1,377
87.00	Mount Forest station .....	1,103	1,350
91.00	Page station .....	1,036	1,283
94.70	Harriston station .....	999	1,246
103.00	Fordwich station .....	953	1,200
108.00	Gorrie and Wroxeter station .....	876	1,123
110.00	Sand and gravel beds .....	850	1,097
120.00	Teeswater station .....	777	1,024

Elevations, referring to track, were furnished through the kindness of Edmund Wragg, Esq., chief engineer and general manager of the railroad.

CREDIT VALLEY RAILROAD.

0.00	Toronto station .....	8	255
6.80	Lambton station .....	165	412
9.90	Humber river bed .....	153	400
14.20	Cooksville station (gravel) .....	146	393
17.40	Streetsville station .....	252	499
20.40	do .....	306	553
32.10	Milton station .....	416	663
38.70	Campbellville station .....	682	929
51.70	.....	760	1,007
57.20	Galt station .....	689	936
57.20	Galt, bed of Grand river .....	616	863
67.20	Ayr station .....	718	965
72.10	Wolverton station .....	715	962
74.30	Drumbo station .....	766	1,013
78.60	Blandford station .....	725	972
81.60	Innerhip station .....	725	972
87.80	Woodstock station .....	700	947



ORANGEVILLE AND ELORA BRANCH.

Distance from Toronto.	Localities.	Elevation above Lake Ontario.	Elevation above mean tide.
Miles.		Feet.	Feet.
21.60	Streetsville junction .....	305	552
23.00	Meadsville station .....	319	566
29.10	Brampton station .....	477	724
45.50	Forks of the Credit .....	218	1,068
	Credit river :		
46.25	Bridge .....	861	1,108
46.25	Bed .....	761	1,008
48.20	Elora junction (Church Falls) .....	1,013	1,260
56.50	Orangeville .....	1,111	1,358
48.20	Elora junction .....	1,013	1,260
52.90	Erlin station .....	1,048	1,295
56.60	Hillsburg station .....	1,177	1,424
61.10	Garafraxa station .....	1,205	1,452
64.50	Summit station .....	1,286	1,533
73.20	Fergus station .....	1,110	1,357
75.70	Elora station .....	1,054	1,301

The above levels were kindly furnished by H. S. Holt, Esq., chief engineer.

CANADA SOUTHERN RAILWAY.

Distance from Buffalo.	Localities.	Elevation above Lake Erie.	Elevation above mean tide.
Miles.		Feet.	Feet.
0.00	Niagara river at Buffalo, September, 9, 1870.	00	573
0.11	Fort Erie station .....	24	597
0.90	Victoria station .....	34	607
2.22	Erie and Niagara railway junction .....	35	608
6.52	Black creek bed .....	— 5	568
7.22	Stevensville station .....	16	589
14.20	Brookfield .....	37	610
17.51	Welland station .....	16	589
17.69	do .. canal bed (1880) .....	—11	562
22.50	.....	15	588
23.10	Forks creek, bed .....	—12	561
26.50	Perry station .....	17	590
34.91	Attercliff station .....	18	591
42.31	Canfield (G. T. R. crossing) .....	48	621
64.12	.....	92	665
48.80	Dean's station .....	64	637
49.53	Grand river, bed .....	8	581
50.50	Decew's pond, bed .....	27	600
55.49	.....	125	698
58.62	Hagersville station .....	167	740
66.49	Villa Nova station .....	159	732
68.56	Surface of ground .....	182	755
68.57	Nanticoke creek bed .....	145	718
71.38	Waterford station .....	190	763
77.80	Windham station .....	244	817
82.10	Pt. Dover and Lake Huron railway crossing .....	219	792
83.33	Hawtrey .....	213	786
88.00	Otter creek bed .....	159	732
88.43	Cornell station .....	224	797
93.80	Tilsonburg station .....	233	806
105.19	Springfield station .....	223	796

Distance from Buffalo.	Miles.
	112.0
	118.2
	119.6
	119.7
	122.2
	127.2
	131.1
	143.6
	148.10
	151.40
	154.10
	156.25
	161.85
	168.00
	175.20
	181.40
	185.41
	192.50
	195.00
	199.00
	207.90
	213.50
	221.40
	227.00
	228.80
	229.20

Distance from St. Thomas

Miles.
0.00
3.80
5.30
9.10
12.20

12.50
19.20
20.20
25.40
31.30
35.10
40.70
48.00
49.10
56.70
57.40
66.40

The elevation of W. E.

## Canada Southern Railway—Continued.

	Distance from Buffalo.	Localities.	Elevation above Lake Erie.	Elevation above mean tide.
	<i>Miles.</i>		<i>Feet.</i>	<i>Feet.</i>
	112. 01	Cat Fish creek .....	141	714
	118. 29	Saint Thomas station .....	193	766
	119. 66	Kettle creek bed .....	92	665
	119. 75	Surface of ground .....	184	757
	122. 20	Saint Clair junction .....	192	765
	127. 27	Shedden station .....	153	726
	131. 17	Iona station .....	172	745
	143. 61	Bismarck station .....	138	711
	148. 10	Rodney station .....	120	693
	151. 40	Taylor station .....	150	723
	154. 10	Muirkirk station .....	152	725
	156. 23	Highgate station .....	160	730
	161. 82	Ridgetown station .....	87	660
	168. 00	Harwich station .....	78	651
	175. 20	Charing Cross station .....	55	628
	181. 40	Buxton station .....	29	602
	185. 41	Fletcher station .....	26	599
	192. 50	Tilbury station .....	19	592
	195. 00	Baptist creek .....	9	582
	199. 00	Comber station .....	31	604
	207. 90	Woodalee station .....	46	619
	213. 50	Essex Center station .....	73	646
	221. 40	Colchester station .....	38	611
	227. 00	Canard river bed .....	12	585
	228. 80	Amherstburg, top of bank .....	27	600
	229. 20	Detroit river .....	7	580

## CANADA SOUTHERN RAILWAY—SARNIA BRANCH.

	Distance from St. Thomas.	Localities.	Elevation above Lake Erie.	Elevation above mean tide.
	<i>Miles.</i>		<i>Feet.</i>	<i>Feet.</i>
	0. 00	Saint Thomas station .....	193	766
	3. 80	Saint Clair junction .....	192	765
	5. 30	Loop line (S. W. R.) crossing .....	174	747
	9. 10	Southwold station .....	172	745
	12. 20	Thames river:		
		East bank .....	146	719
		Bed .....	75	648
	12. 50	West bank at Delaware station .....	157	730
	19. 20	Melbourne station .....	162	73
	20. 20	G. W. R. crossing .....	173	746
	25. 40	Ekfrid station .....	177	750
	31. 30	Walker's station .....	159	732
	35. 10	West bank of Sydenham river .....	160	733
	40. 70	Inwood station .....	118	691
	48. 00	Oil City station .....	90	663
	49. 10	Fox Creek bed .....	65	638
	56. 70	Brigden station .....	63	636
	57. 40	Bear Creek bed .....	18	591
	66. 40	Courtright .....	11	584
		.... do. .... at Saint Clair river .....		

The elevations of the Canada Southern railway were furnished through the kindness of W. B. Gossage, Esq., chief engineer of the C. S. R., in 1881.

## GRAND TRUNK RAILWAY—BRANTFORD AND GODERICH DISTRICT.

Distance from Int. Bridge.	Localities.	Elevation above Lake Ontario.	Elevation above mean tide.	Distance from Montreal.
Miles.		Feet.	Feet.	Miles.
0.00	International Bridge .....	341	588	354.12
1.75	Niagara river surface .....	320	567	359.63
10.00	Fort Erie station .....	359	606	361.25
20.00	Bertie station .....	371	618	361.25
33.00	Port Colborne station .....	334	581	362.00
38.88	Welland canal feeder bridge .....	339	586	362.75
46.25	Dnnville station .....	338	585	365.25
52.00	Canfield Junction Crossing .....	369	616	366.75
59.38	Cook's station .....	396	643	368.38
62.75	Seneca (Caledonia) station .....	411	658	372.63
64.75	.....	434	681	373.75
69.50	Big creek bed .....	370	617	374.00
75.00	Onondaga station .....	417	664	381.25
76.00	.....	484	731	381.38
71.38	G. W. R. crossing .....	441	688	386.50
81.50	Brantford station .....	459	706	391.00
83.50	.....	609	856	391.50
	Grand river:			395.38
	Bed .....	568	815	
	Bridge .....	485	732	397.12
84.25	Paris station .....	596	843	396.00
87.00	.....	663	910	
88.38	Nith's creek bed .....	589	836	395.88
93.38	Summit near Drumbo .....	777	1,024	401.75
98.25	Bright station .....	794	1,041	404.38
108.00	Tavistock station .....	890	1,137	408.50
115.75	Stratford station .....	943	1,190	
120.75	..... do. ... bed of Avon river .....	892	1,139	401.75
120.75	Sebringville station .....	926	1,173	402.88
123.12	Summit .....	966	1,213	405.12
128.75	Mitchell station .....	875	1,122	407.62
133.63	Dublin station .....	857	1,104	408.25
140.25	Seaforth station .....	762	1,069	414.75
148.38	Clinton station .....	674	921	420.50
153.25	.....	670	917	421.25
161.25	Goderich station .....	483	730	426.38
163.00	..... do. ... (elevation near surface of Lake Huron)	338	585	431.38
				431.38
				444.50
				454.00

## GRAND TRUNK RAILWAY—WESTERN DIVISION.

Distance from Montreal.	Localities.	Elevation above Lake Ontario.	Elevation above mean tide.	
Miles.		Feet.	Feet.	
333.00	Toronto station .....	8	255	432.25
338.12	Carlton station .....	159	406	438.00
341.38	Weston station .....	179	426	440.75
342.50	Humber bridge .....	211	458	446.62
342.50	..... do. ... river .....	142	3-9	453.75
346.50	Mimico bridge .....	293	540	461.50
346.50	..... do. ... river .....	265	512	467.75
348.12	Malton station .....	303	550	467.75
353.75	Etobicoke river bed .....	443	690	470.00
				473.50
				478.88
				488.00
				492.25
				496.25
				501.50

RICT. /

## Grand Trunk Railway—Western Division—Continued. /

Elevation above mean tide.	Distance from Montreal.	Localities.	Elevation above Lake Ontario.	Elevation above mean tide.
Feet.	Miles.		Feet.	Feet.
588	354. 12	Brampton station .....	466	713
567	359. 63	Norval station .....	572	819
606	361. 25	Credit bridge .....	581	828
618	361. 25	.....do. river .....	467	714
581	362. 00	Georgetown station .....	600	847
586	362. 75	.....do. junction (H. & N. W. Ry.) .....	627	874
585	365. 25	Llunehouse station .....	810	1,057
616	366. 75	.....do. siding .....	847	1,094
643	368. 38	Acton station .....	912	1,159
658	372. 63	.....do. .....	972	1,219
681	373. 75	Eremosia river (water) .....	894	1,141
617	374. 00	Rockwood station .....	936	1,183
664	381. 25	Speed river bed .....	783	1,030
731	381. 38	Guelph station .....	821	1,068
688	386. 50	Mosboro station .....	838	1,085
706	391. 00	Breslan station .....	778	1,025
856	391. 50	Grand river bed .....	714	961
	395. 38	Berlin station .....	854	1,101
815				
732	397. 12	Waterloo station .....	811	1,058
811	396. 00	Summit .....	869	1,116
811				
811	395. 28	Berlin junction .....	848	1,095
1,024	401. 75	.....do. .....	730	977
1,041	404. 38	Bridge near Blair .....	653	900
1,137	408. 50	Galt station .....	633	880
1,190				
1,139	401. 75	Petersburg station .....	964	1,211
1,173	402. 88	.....do. ....summit .....	1,002	1,249
1,213	405. 12	Baden station .....	910	1,157
1,122	407. 62	Hamburg station .....	880	1,127
1,104	408. 25	Nith river, bed .....	836	1,083
1,069	414. 75	Shakespeare station .....	937	1,184
921	420. 50	Port Dover and Lake Huron Ry. Crossing .....	947	1,194
917	421. 25	Stratford station .....	943	1,190
730	426. 38	Saint Paul's station .....	919	1,166
585	431. 38	Saint Mary's station .....	836	1,083
	431. 38	London Branch junction .....	836	1,083
	444. 50	Thorndale station .....	689	936
	454. 00	London station .....	568	815
	432. 25	Thames river (water) .....	741	989
	438. 00	Fish creek (bed) .....	698	945
	440. 75	Granton station .....	787	1,034
	446. 62	Lucan station .....	744	991
	453. 75	Ailsa Craig station .....	507	754
	461. 50	Parkhill station .....	416	663
	467. 75	An Sable bridge .....	370	617
	467. 75	.....do. ....river (bed) .....	347	594
	470. 00	Widder station .....	435	682
	473. 50	Tool's Creek bridge .....	476	723
	478. 88	Forrest station .....	465	712
	488. 00	Camalachie station .....	402	649
	492. 25	Perch station .....	348	595
	496. 25	Blackwell station .....	355	602
	501. 50	Sarnia station .....	340	587
		.....do. (water in St. Clair river) .....	335	582

## Grand Trunk Railway—Western Division—Continued. ✓

Distance from Port Huron.	Localities.	Elevation above Lake Ontario.	Elevation above mean tide.
<i>Miles.</i>	IN MICHIGAN.	<i>Feet.</i>	<i>Feet.</i>
505. 63	Port Huron station.....	341	588
523. 00	Chicago and Grand Trunk junction.....	376	623
528. 88	Michigan Air-Line junction.....	476	723
540. 50	New Haven.....	382	629
552. 00	Clinton river (water).....	326	573
561. 00	Connois river (water).....	361	608
	Detroit junction.....	347	594

## GRAND TRUNK RAILWAY—CENTRAL DIVISION. ✓

Distance from Montreal.	Localities.	Elevation above Lake Saint Peter.	Elevation above mean tide.
<i>Miles.</i>		<i>Feet.</i>	<i>Feet.</i>
*0. 00	Montreal (crossing Wellington street).....	40	51
14. 50	Point Clair station.....	98	109
20. 50	Saint Anne station.....	113	124
24. 00	Vaudreuil station.....	82	93
37. 50	Coteau Landing station.....	150	161
43. 12	Rivière Baudette station.....	162	173
45. 00	Interprovincial line.....	160	171
53. 75	Lancaster station.....	154	165
67. 38	Cornwall station.....	181	192
81. 50	Farran's Point station.....	231	242
99. 00	Iroquois station.....	232	243
104. 38	Edwardsburg (Cardinal) station.....	266	277
112. 1 <sup>2</sup>	Prescott junction.....	292	303
113. 50	.....do.....station.....	299	310
125. 25	Brockville station.....	270	281
129. 50	Lynn station.....	275	286
138. 00	Mallorytown station.....	325	336
146. 12	Lansdown station.....	323	334
155. 00	Ganonoque station.....	250	261
162. 50	Ballantyne's station.....	350	361
168. 38	Rideau station.....	292	303
172. 63	Kingstown station.....	263	274
197. 00	.....	359	370
198. 50	Napanee river (water).....	266	277
206. 63	Tyendinaga station.....	325	336
220. 25	Belleville station.....	275	286
220. 62	.....do.....Moirs river (water).....	256	267
231. 88	Trent river (water).....	238	249
232. 12	Trenton station.....	254	265
241. 50	Brighton station.....	293	304
245. 00	The Dangers.....	259	270
249. 00	Colborne station.....	311	322
263. 50	Colbourg station.....	286	297
270. 25	Port Hope station.....	276	287
278. 00	Newtonville station.....	283	294
288. 88 <sup>2</sup>	Newcastle station.....	285	296
290. 25	Bowmansville station.....	252	263
293. 25	.....	369	380

*Grand Trunk Railway—Central Division—Continued.*

Elevation above mean tide.	Distance from Montreal.	Localities.	Elevation above Lake Saint Peter.	Elevation above mean tide.
Feet.	Miles.		Feet.	Feet.
588	299.50	Oshawa station .....	322	333
623	303.50	Whitby station .....	257	268
723	309.75	Duffin's Creek station .....	276	287
629	316.50	Port Union station .....	255	266
573	323.38	Summit .....	547	558
608	324.00	Scarboro junction .....	535	546
594	331.38	Don creek (bridge) .....	242	253
	333.00	Toronto station .....	243	254
		...do... Lake Ontario .....	235	246

GRAND TRUNK RAILWAY—EASTERN DIVISION.

Elevation above mean tide.	Distance from Montreal.	Localities.	Elevation above Lake Saint Peter.	Elevation above mean tide.
Feet.	Miles.		Feet.	Feet.
	0.00	Montreal :		
		Point Saint Charles .....	40	51
		Center of Victoria bridge .....	104	115
		Saint Lawrence river (beneath Victoria bridge) .....	22	33
	6.50	Saint Lambert's junction .....	65	76
	10.00	Saint Hubert's station .....	80	91
	14.88	Saint Bruno station .....	87	98
	21.12	Belcel station .....	52	63
	21.12	...do... Richelieu river (surface) .....	37	48
	22.25	Saint Hilaire station .....	75	86
	23.12	Saint Madeleine station .....	108	119
	35.62	Saint Hyacinthe station .....	100	111
	36.12	Yomaska river (bed) .....	54	65
	42.62	Britannia Mills station .....	211	222
	48.00	Upton station .....	193	204
		...do... Black river (surface) .....	156	167
	54.38	Aeton station .....	301	312
	54.75	Southeastern Railway junction .....	310	321
	59.75	Moose river (surface) .....	330	341
	62.00	Danby station .....	427	438
	66.12	South Durham station .....	598	609
	69.12	Lisgar station .....	518	529
	74.75	Saint Francis river (surface) .....	466	477
	76.50	Richmond station .....	380	391
	86.38	Windsor station .....	409	420
	94.50	Brompton Falls station .....	460	471
	100.75	Magog river .....	452	463
	101.12	Sherbrooke station .....	475	486
	104.13	Lennoxville station .....	489	500
	111.12	Waterville station .....	635	646
	114.37	Compton station .....	723	734
	117.13	Richby station .....	808	819
	122.50	Coaticook station .....	906	1,007
	127.62	Dixville station .....	1,116	1,127
	132.50	International boundary (Canada and the United States) .....	1,340	1,351
	137.00	Lake station, Vermont .....	1,241	1,252
	141.25	Summit, Vermont .....	1,367	1,378
	147.88	Island Pond station, Vermont .....	1,176	1,187
	155.25	Wenlock station, Vermont .....	1,140	1,151
	162.75	Connecticut River Bed, New Hampshire and Vermont, State Line .....	862	873
	162.88	North Stratford, New Hampshire .....	897	908
	166.50	Beathes, New Hampshire .....	865	876

## Grand Trunk Railway—Eastern Division—Continued.

Distance from Montreal.	Localities.	Elevation above Lake Saint Peter.	Elevation above mean tide.	Distance from Toronto.
<i>Miles.</i>		<i>Feet.</i>	<i>Feet.</i>	<i>Miles.</i>
170. 87	Stratford Hollow station, New Hampshire.....	858	869	0. 0
174. 38	Grovetown junction, New Hampshire .....	878	889	9. 0
180. 25	River Ammonoosuc (bed) New Hampshire.....	943	954	14. 0
186. 87	Stark station, New Hampshire .....	949	960	17. 0
190. 00	West Milan (bed) New Hampshire .....	992	1, 103	20. 0
195. 75	Milan, water station, New Hampshire .....	1, 055	1, 066	22. 5
202. 38	Berlin Falls station, New Hampshire, .....	1, 011	1, 022	29. 0
207. 75	Gorham station, New Hampshire.....	787	798	34. 0
211. 50	Shelburne station, New Hampshire .....	698	709	36. 0
217. 75	Gilead station, Maine.....	705	716	41. 0
227. 25	Bethel station, Maine.....	643	654	49. 0
232. 00	Loche station, Maine .....	715	726	53. 0
241. 62	West Paris station, Maine .....	475	486	59. 0
250. 00	South Paris station, Maine .....	321	332	63. 0
256. 50	Oxford station, Maine .....	322	333	64. 7
261. 00	Mechanic Falls station, Maine.....	289	300	66. 0
267. 50	Lewiston junction, Maine .....	237	248	71. 0
269. 75	Dauville junction, Maine .....	192	203	74. 5
269. 88	Maine Central railway (crossing) Maine.....	189	200	76. 0
274. 62	New Gloucester station, Maine.....	107	118	79. 0
282. 00	North Yarmouth station, Maine.....	91	102	87. 0
286. 00	Yarmouth station, Maine .....	85	96	.....
288. 38	Cumberland station, Maine.....	74	85	
291. 75	Falmouth station, Maine .....	40	51	
296. 00	Portland and Rochester junction, Maine.....	2	13	
297. 75	Portland station, Maine .....	3	14	
LEWISTON BRANCH.				
267. 50	Lewiston junction (main line) Maine.....	237	248	
271. 50	Taylor Brook, Maine .....	194	205	
272. 63	Autburn station, Maine .....	137	148	
273. 00	Lewiston station, Maine.....	129	140	

## GRAND TRUNK RAILWAY—QUEBEC AND RICHMOND DIVISION.

0. 00	Montreal .....			
76. 50	Richmond station .....	380	391	
88. 38	St. Cyr siding .....	471	482	
92. 50	Kingsey station .....	433	444	
100. 50	Warwick station .....	470	481	
108. 50	Arthabaska station.....	419	420	
117. 25	Staufold station .....	117	128	
123. 25	Somerset station .....	431	442	
131. 38	St. Julie Station .....	464	475	
136. 00	Lyster station .....	435	446	
143. 88	Methot's Mills station.....	433	444	
152. 12	St. Agassit station .....	395	406	
157. 75	Craig's Road station .....	324	335	
164. 88	Chaudière Curve station.....	218	229	
172. 00	Point Levi (opposite Quebec) station .....	3	14	

Through the permission of Mr. Hanneford, the chief engineer of the Grand Trunk railway, Mr. James Wilson procured for me the levels of the Grand Trunk railway along its various divisions. As the original profiles were burned, the road has subsequently been leveled, and the elevations of all the towns refer to track opposite the various stations. The horizontal measurements on the modern profiles do not always agree with those on time-tables, which were taken from the original profiles, and underwent subsequent changes.

Distance from Toronto

Miles.

These elevations are the kindest. The road has

Distance from Port Hope

Miles.

0. 00  
1. 50  
3. 00  
5. 00  
8. 00  
12. 00  
13. 25  
14. 00  
17. 50  
20. 33  
22. 75  
24. 00  
26. 00  
29. 00  
32. 25  
33. 75  
41. 00  
41. 25  
42. 50  
44. 00  
48. 00

TORONTO AND NIPISSING RAILWAY. √

Distance from Toronto.	Localities.	Elevation above Lake Ontario.	Elevation above mean tide.
Miles.		Feet.	Feet.
0.00	Toronto station .....	8	255
8.89	Scarboro junction .....	300	547
9.54	Agincourt station .....	322	569
17.00	Millikens station .....	404	651
20.00	Unionville station .....	330	577
22.50	Markham station .....	393	640
29.00	Stouffville station .....	645	892
34.00	Goodwood station .....	843	1,090
36.00	Summit station .....	893	1,140
41.00	Usbridge station .....	630	877
49.00	Wicks station .....	609	856
53.00	Sunderland station .....	604	851
59.00	Cannington station .....	599	846
63.00	Woodville station .....	649	896
64.75	Midland railway junction .....	634	881
66.00	Argyle junction .....	613	860
71.00	Eldon junction .....	623	870
74.50	Portago road .....	664	911
76.00	Kirkfield station .....	645	892
79.00	Victoria road .....	590	837
87.00	Coboconk station .....	600	847
.....	.....do .....outlet of Balsam lake .....	(?) 588	835

29

These elevations refer to track opposite stations. They were furnished through the kindness of W. Goodenham, jr., Esq., president and managing director of the road. The road has subsequently passed under the management of the Midland railway.

MIDLAND RAILWAY.

Distance from Port Hope.	Localities.	Elevation above Lake Ontario.	Elevation above mean tide.
Miles.		Feet.	Feet.
0.00	Lake Ontario at Port Hope .....	00	247
1.50	Sand ridge .....	95	342
3.00	Clay ridge .....	140	387
5.00	Quay's station .....	234	481
8.00	Perrytown station .....	405	1,52
12.00	Clay ridge .....	558	805
13.25	Ridge .....	665	912
14.00	Summit station .....	663	910
17.50	Millbrook station .....	525	772
20.33	Ridge .....	650	897
22.75	Caran's Creek (bed) .....	525	772
24.00	Ridge .....	675	922
26.00	Valley .....	327	634
29.00	Ridge .....	665	912
32.25	Pigeon creek (bed) .....	558	805
33.75	Ridge .....	663	910
41.00	Lindsay station .....	618	865
41.25	Scugog river (below dam) .....	561	808
42.50	.....do .....river (above dam) .....	568	815
44.00	Victoria junction .....	606	853
48.00	Cambray's ridge .....	679	926

30



Midland Railway—Continued.

Distance from Port Hope.	Localities.	Elevation above Lake Ontario.	Elevation above mean tide.
<i>Miles.</i>		<i>Feet.</i>	<i>Feet.</i>
57.00	Woodville junction .....	650	897
65.00	Beaverton station .....	516	763
67.00	Lancaster, surface of Simcoe lake .....	(?) 477	724
67.50	Talbot river (bed) .....	465	712
69.00	Gamebridge tation .....	550	797
73.00	Brechin station .....	510	757
73.50	Ridge of rocks .....	519	766
75.00	} Mara swamps .....	483	730
78.00			
83.00	Bed of narrows between Simcoe and Conchou- ching lakes.	457	704
90.00	North river bed .....	389	636
101.00	Coldwater river bed .....	341	588
108.00	Sturgeon river bed .....	331	578
118.00	Midland, Georgian bay (average water-level)	332	579

LAKEFIELD BRANCH. V

17.00	Millbrook junction .....	525	772
24.25	Moffat's creek .....	370	617
30.50	Peterborough station .....	403	650

MIDLAND RAILWAY—WHITBY DIVISION.

Distance from Whitby.	Localities.	Elevation above Lake Ontario.	Elevation above mean tide.
<i>Miles.</i>		<i>Feet.</i>	<i>Feet.</i>
0.00	Lake Ontario at Whitby .....	00	247
0.75	G. T. R. junction .....	21	268
2.00	Whitby station .....	41	288
6.00	Gravel ridge .....	251	498
7.50	Brooklin station .....	292	539
12.00	Clay ridge .....	649	896
14.00	.....do.....	781	1,028
19.00	Port Perry station .....	592	839
	.....do..... Lake Scugog .....	(?) 596	843
24.00	Clay ridge .....	628	875
29.00	.....do.....	680	927
31.50	Manilla station .....	708	955
33.50	Clay ridge .....	674	921
42.00	.....do..... opposite to Mariposa station .....	637	884
43.50	.....do.....	673	920
45.25	Lindsay station .....	604	851

SPENCER.]

Distan  
from  
Bellevi

*Miles.*  
0.  
15.  
19.  
20.  
26.  
32.  
33.  
33.  
44.  
49.  
53.  
56.  
61.  
65.  
66.

NOR

0.  
5.  
9.  
15.  
20.  
23.  
24.  
26.  
27.  
29.  
33.  
34.  
37.  
39.

T. A. H.  
way, kind  
branches.

Distance  
from  
Carlton.

*Miles.*  
0.0

3.8  
7.2

31

GRAND JUNCTION DIVISION OF MIDLAND RAILWAY. ✓

Distance from Belleville.	Localities.	Elevation above Lake Ontario.	Elevation above mean tide.
<i>Miles.</i>		<i>Feet.</i>	<i>Feet.</i>
0.00	Lake Ontario at Belleville .....	00	247
15.00	Junction of N. Hastings branch .....	269	516
19.25	Rawdon creek bed .....	157	404
20.00	Stirling station .....	168	415
26.00	Bed of creek .....	128	375
32.00	.....do.....	293	540
33.10	Trent river bed (limestone) .....	232	479
33.50	Campbellford station .....	260	507
44.00	Hasting station .....	388	635
44.75	Trent river bed above Hastings' dam .....	365	612
49.25	Ouse river bed .....	373	620
53.75	.....	455	702
56.75	Indian river bed (limestone) .....	390	637
61.25	Ridge .....	495	742
65.00	Otonabee river bed .....	369	616
	Otonabee river (surface of water) .....	385	632
66.00	Peterborough station .....	403	650

39

NORTH HASTINGS BRANCH OF GRAND JUNCTION DIVISION. ✓

0.00	Lake Ontario at Belleville .....		247.00
5.00	Hayden's Corners .....	102.00	349.00
9.00	Moira river bed .....	88.00	335.00
15.00	North Hastings junction .....	239.00	516.00
20.00	Rawdon creek .....	230.00	477.00
23.00	.....do.....	313.00	560.00
24.00	White lake (surface) .....	327.00	574.00
26.50	Granite ridge .....	333.00	580.00
27.50	Moira-lake (surface) .....	272.00	519.00
29.75	Madoc station .....	337.00	584.00
33.50	Seymour's mine (surface) .....	508.00	755.00
34.50	Stoney ridge (surface) .....	574.00	821.00
37.00	Moore's mine (surface) .....	538.00	785.00
39.00	Eldorado (terminus) .....	510.00	757.00

32

T. A. Hay, Esq., acting engineer of the Midland railway and Grand Junction railway, kindly furnished all the above elevations of the Midland railway and its branches.

ONTARIO AND QUEBEC RAILWAY.

Distances from Carlton.	Localities.	Elevation above Lake Ontario.	Elevation above mean tide.
<i>Miles.</i>		<i>Feet.</i>	<i>Feet.</i>
0.00	Carlton station, junction with Credit Valley railway (about 5 miles from Toronto) .....	147.00	394.00
3.82	Yorkville station .....	159.00	406.00
7.20	River Don:		
	Banks .....	174.00	421.00
	Bed .....	64.00	311.00

34

Ontario and Quebec Railway—Continued.

Distance from Carlton.	Localities.	Elevation above Lake Ontario.	Elevation above mean tide.
Miles.		Feet.	Feet.
8. 22	Little Don river bank .....	204. 00	451. 00
	.....do .....	91. 00	338. 00
13. 31	Agincourt station .....	324. 00	571. 00
18. 14	River Rouge bed .....	239. 00	486. 00
23. 78	Duffin's creek station .....	399. 00	646. 00
29. 22	Claremont station .....	638. 00	885. 00
34. 12	Myrtle station .....	640. 00	887. 00
54. 32	Summit .....	853. 00	1, 100. 00
56. 21	Poutypool station .....	817. 00	1, 064. 00
68. 30	Casan station .....	401. 00	648. 00
77. 35	Peterborough, bed of Otonabee river .....	376. 00	623. 00
	Water-level of river .....	367. 00	634. 00
88. 50	Indian river .....	414. 00	661. 00
113. 65	Crow river .....	344. 00	591. 00
131. 60	Gravel ridge .....	360. 00	607. 00
132. 80	Tweed village .....	324. 00	571. 00
135. 40	Moirs river bed (limestone) .....	208. 00	455. 00
135. 90	Granite ridge .....	252. 00	499. 00
136. 80	Stoco lake .....	210. 00	457. 00
	Crossing Salmon river .....	363. 00	610. 00
	Clear lake .....	363. 00	610. 00
156. 55	Sharbot lake .....	389. 00	636. 00
178. 60	Summit .....	505. 00	752. 00
	Fall river crossing .....	328. 00	575. 00
	McGowan's lake .....	324. 00	571. 00
180. 43	Perth station .....	184. 00	431. 00

As the road was not completed in the summer of 1883, the stations east of Peterborough were not located, but the country does not differ greatly in altitudes from those of the few above-mentioned lakes, &c.

These elevations were obtained from C. E. W. Dodwell, Esq., engineer of the Ontario and Quebec railroad.

SAINT LAWRENCE AND OTTAWA RAILROAD.

Distance from Prescott.	Localities.	Elevation above Lake St. Peter.	Elevation above mean tide.
Miles.		Feet.	Feet.
0. 00	Saint Lawrence river at Prescott .....	228. 00	239. 00
3. 41	Corner's ridge .....	*309. 00	320. 00
7. 86	Nation river bed .....	267. 00	278. 00
16. 25	.....do .....	344. 00	355. 00
22. 25	Kemptville .....	280. 00	291. 00
27. 18	Rideau creek .....	262. 00	273. 00
40. 15	Spratt's ridge .....	340. 00	351. 00
52. 78	Bed of Rideau river .....	100. 00	111. 00
53. 20	Ottawa station .....	122. 00	133. 00

These elevations were taken from the profiles furnished by the chief engineer, J. S. Macklin, Esq.

The record of elevation of datum was defective, and the above reductions appear to be about 27 feet too low.

38

36

Distance from Montreal  
Miles  
0  
8  
23  
35  
67  
79  
84  
85  
95  
99  
101  
111  
178  
0.0  
8.5  
120.0  
Rideau the Saint with the mean tide The river Engineer  
QU  
Distance from Montreal  
Miles  
0.0  
2.9  
8.5  
8.0  
14.9  
B

SAINT LAWRENCE RIVER.

Distance from Montreal.	Localities.	Elevation above Lake Saint Peter.	Elevation above mean tide.
<i>Miles.</i>	Flats of Lake Saint Peter, Saint Lawrence river, to which high tide reaches	<i>Feet.</i>	<i>Feet.</i>
0.00	Montreal, foot of No. 1 Lock, Lachine Canal.	12.00	11.00
8.50	Lake Saint Louis	55.75	23.00
	Beauharnois Canal:		66.75
23.75	Foot of .....	55.75	66.75
35.00	Head of .....	140.00	151.00
	Cornwall Canal:		
67.75	Foot of .....	140.00	151.00
79.25	Head of .....	189.25	200.25
	Farran's Point Canal:		
84.25	Foot of .....	189.25	200.25
85.00	Head of .....	193.25	204.25
	Rapide Flat Canal:		
95.50	Foot of .....	197.00	208.00
99.50	Head of .....	212.25	223.25
	Galops Rapids Canal:		
101.00	Foot of .....	212.25	223.25
111.62	Head of .....	228.00	239.00
178.00	Saint Lawrence, navigation at Kingston	234.00	245.00

OTTAWA RIVER AND RIDEAU NAVIGATION.

0.00	Foot of No. 1 Lock, Montreal	12.00	23.00
8.50	Junction of Ottawa and Saint Lawrence rivers at head of Lachine canal	55.75	66.75
120.00	Entrance to Rideau canal at Ottawa city	118.00	129.00

Rideau canal and other water-courses between Ottawa city, on Ottawa river, and the Saint Lawrence river, at Kingston, form a navigation of 126.25 miles in length, with the summit of navigation 400 feet above lake Saint Peter, or 411 feet above mean tide.

The river elevations are taken from the Reports upon Public Works by the Chief Engineer of Canals.

QUEBEC, MONTREAL, OTTAWA AND OCCIDENTAL RAILWAY

Distance from Montreal.	Localities.	Elevation above Lake Ontario.	Elevation above mean tide.
<i>Miles.</i>	MONTREAL TO OTTAWA.		
0.00	Montreal, Hochelaga street and Montreal avenue	<i>Feet.</i>	<i>Feet.</i>
2.92	Mile-end station		70
8.22	Rivière des Prairies:		225
	South bank		82
	Surface of water		00
	Rocky bed		32
8.65	North bank		87
14.20			150

Quebec, Montreal, Ottawa and Occidental Railway—Continued.

Distance from Montreal.	Localities.	Elevation above lake Ontario.	Elevation above mean tide.
<i>Miles.</i>	MONTREAL TO OTTAWA—Continued.	<i>Feet.</i>	<i>Feet.</i>
15.51	Saint Rose station .....		85
15.81	Mille Isles (bed of river) .....		43
18.60	Saint Jerome junction .....		135
25.80	Saint Janvier station .....		220
41.85	Saint Jerome station .....		311
25.90	Dobbies station .....		227
30.72	Saint Scholastique station .....		238
.....	do.....Bell river bed .....		214
35.87	Saint Hermas station .....		265
42.55	Laclute station .....		262
47.00	Muddy branch station .....		340
50.00	.....		210
55.50	Grenville station .....		147
58.51	Calumet river .....		188
63.30	Pointe au Chêve station .....		172
72.83	Montebello station .....		155
75.60	Papineauville station .....		125
82.97	Nation river bed.....		185
83.17	.....		186
88.74	Thurso station.....		128
91.00	Blanche river bed.....		183
98.20	Buckingham station .....		150
.....	do.....Rivière aux Lievres, bed .....		155
108.80	East Templeton station .....		175
112.50	Gatineau Point station.....		185
116.78	Hull station .....		222
124.24	Aylmer station.....		

The levels of this section of the Quebec, Montreal, Ottawa and Occidental Railway were furnished from the construction profiles (referred to harbor datum), from which they were reduced to mean ocean level.

(484)

ALI  
 Acton, O  
 Q  
 Agincourt  
 Ailsa Cra  
 Allaubur  
 Allandale  
 ..do.....  
 Attarcliff  
 Alton ..  
 Amaranth  
 Angus (P  
 Appin ..  
 Argyle ..  
 Arthabasi  
 Arthur ..  
 Aylmer ..  
 Ayr ..  
 Baden ..  
 Ballantyn  
 Baptist C  
 Barrie ..  
 Do ..  
 Do .. I  
 Beaverton  
 Beeton ju  
 Beechville  
 Belgrave ..  
 Belleville  
 Belœil ..  
 Do .. R  
 Beamsville  
 Berkeley ..  
 Berlin ..  
 Do .. ju  
 Bertie ..  
 Bismarck ..  
 Blackwell  
 Blandford  
 Bluevale ..  
 Blyth ..  
 Bolton ..  
 Bothwell ..  
 Bowmanvi  
 Bradford ..  
 Bramly ..  
 Brampton ..  
 Do ..  
 Branchton ..  
 Brantford ..  
 Do ..  
 Do ..

d.

levation  
ve mean  
tide.

**ALPHABETIC LIST OF ELEVATIONS IN CANADA, ABSTRACTED FROM THE FOREGOING PROFILES.**

*Feet.*

85  
43  
135  
220  
311  
227  
238  
214  
225  
262  
340  
210  
147  
188  
172  
155  
125  
185  
186  
128  
183  
150  
155  
175  
185  
222

Railway  
on which

Station.	Authority.	Elevation above mean ocean level.
Acton, Ontario .....	Grand Trunk R. R .....	<i>Feet.</i> 1,159
Quebec .....	Grand Trunk R. R .....	312
Agincourt .....	T. & N. R. R .....	569
Ailsa Craig .....	Grand Trunk R. R .....	754
Allanburg .....	Welland R. R .....	592
Allandale .....	H. & N. W. R. R .....	755
do .....	Northern R. R .....	738
Attarcliffe .....	Canada Southern R. R .....	591
Alton .....	T., G. & B. R. R .....	1,298
Amaranth .....	T., G. & B. R. R .....	1,546
Angus (Pine River) .....	Northern R. R .....	627
Appin .....	Great Western R. R .....	743
Argyle .....	T. & N. R. R .....	860
Arthabaska .....	Grand Trunk R. R .....	430
Arthur .....	T., G. & B. R. R .....	1,525
Aylmer .....	Q., M., O. & O. R. R .....	222
Ayr .....	Credit Valley R. R .....	965
Baden .....	Grand Trunk R. R .....	1,157
Ballantyne's .....	Grand Trunk R. R .....	361
Baptist Creek .....	Great Western R. R .....	595
Barrie .....	Northern R. R .....	726
Do .....	H. & N. W. R. R .....	872
Do..Lake Simcoe .....	Northern R. R .....	722
Beaverton .....	Midland R. R .....	763
Beeton junction .....	H. & N. W. R. R .....	716
Beechville .....	Great Western R. R .....	907
Belgrave .....	Great Western R. R .....	1,062
Belleville .....	Grand Trunk R. R .....	286
Belœil .....	Grand Trunk R. R .....	63
Do..Richelieu river (surface) .....	Grand Trunk R. R .....	48
Beamsville .....	Great Western R. R .....	294
Berkeley .....	T., G. & B. R. R .....	1,329
Berlin .....	Grand Trunk R. R .....	1,101
Do.. Junction .....	Grand Trunk R. R .....	1,095
Bertie .....	Grand Trunk R. R .....	618
Bismarek .....	Canada Southern R. R .....	711
Blackwell .....	Grand Trunk R. R .....	602
Blandford .....	Credit Valley R. R .....	972
Bluevale .....	W., G. & B. R. R .....	1,079
Blyth .....	Great Western R. R .....	1,081
Bolton .....	T., G. & B .....	838
Bothwell .....	Great Western R. R .....	691
Bowmanville .....	Grand Trunk R. R .....	263
Bradford .....	Northern R. R .....	725
Bramly .....	Northern R. R .....	888
Brampton .....	Credit Valley R. R .....	724
Do .....	Grand Trunk R. R .....	713
Branchton .....	W., G. & B. R. R .....	897
Brantford .....	Grand Trunk R. R .....	706
Do..... bridge over Grand river .....	Great Western R. R .....	659
Do..... bed of Grand river .....	.....	645

Station.	Authority.	Elevation above mean ocean level.
Brechin .....	T. & N. R. R. ....	757
Brecon .....	Great Western R. R. ....	900
Brentwood .....	Northern R. R. ....	647
Breslan .....	Grand Trunk R. R. ....	1,025
Brigden .....	Canada Southern R. R. ....	636
Bright .....	Grand Trunk R. R. ....	1,041
Brighton .....	Grand Trunk R. R. ....	304
Britannia Mills .....	Grand Trunk R. R. ....	222
Brockville .....	Grand Trunk R. R. ....	281
Brompton Falls .....	Grand Trunk R. R. ....	471
Bronté .....	Great Western R. R. ....	346
Brookfield .....	Canada Southern R. R. ....	610
Brooklin .....	Midland R. R. ....	537
Brucefield .....	Great Western R. R. ....	890
Brussels .....	W., G. & B. R. R. ....	1,122
Buckingham .....	Q., M., O. & O. R. R. ....	183
Burford .....	Great Western R. R. ....	844
Burlington .....	Great Western R. R. ....	340
Do .....	H. & N. W. R. R. ....	253
Do... Beach (Ocean House) .....	H. & N. W. R. R. ....	255
Do... (G. W. R. R. crossing) .....	H. & N. W. R. R. ....	318
Buxton .....	Canada Southern R. R. ....	602
Carlton .....	Grand Trunk R. R. ....	406
Do. (sand and gravel bed) .....	T. G. & B. R. R. ....	407
Caledon (sand bed near) .....	H. & N. W. R. R. ....	942
Camalachie .....	Grand Trunk R. R. ....	649
Campbellford .....	Midland R. R. ....	507
Campbellville .....	Credit Valley R. R. ....	929
Canaan .....	O. & Q. R. R. ....	648
Canfield (G. T. R. R. crossing) .....	Canada Southern R. R. ....	621
Do... junction crossing .....	Grand Trunk R. R. ....	616
Cannington .....	T. & N. R. R. ....	846
Centralia .....	Great Western R. R. ....	867
Chandlere Curve .....	Grand Trunk R. R. ....	229
Charing Cross .....	Canada Southern R. R. ....	628
Charleston (gravel bed near) .....	T., G. & B. R. R. ....	1,367
Chatham .....	Great Western R. R. ....	598
Chatsworth (gravel beds) .....	T., G. & B. R. R. ....	944
Clandeboyne .....	Great Western R. R. ....	888
Claremont .....	O. & Q. R. R. ....	885
Clear lake .....	O. & Q. R. R. ....	610
Clifford .....	W., G. & B. R. R. ....	1,234
Clinton .....	Great Western R. R. ....	919
Do .....	Grand Trunk R. R. ....	921
Coatieoke .....	Grand Trunk R. R. ....	1,007
Coboconk .....	T. & N. R. R. ....	847
Cobourg .....	Grand Trunk R. R. ....	297
Colborne .....	Grand Trunk R. R. ....	322
Colchester .....	Canada Southern R. R. ....	611
Collingwood .....	H. & N. W. R. R. ....	589
Do .....	Northern R. R. ....	590
Colwell junction .....	Northern R. R. ....	750
Comber .....	Canada Southern R. R. ....	604
Compton .....	Grand Trunk R. R. ....	734
Cook's Station .....	Grand Trunk R. R. ....	643
Cooksville (gravel) .....	Credit Valley R. R. ....	393
Copetown .....	Great Western R. R. ....	749
Corinth .....	Great Western R. R. ....	769
Cornell .....	Canada Southern R. R. ....	797
Cornwall .....	Grand Trunk R. R. ....	192

Coten  
Court  
Craig  
Craig  
Dunby  
Dean's  
Dixvi  
Dobbi  
Dorch  
Drayt  
Drum  
Dublin  
Duffin  
Dunda  
Dunda  
Do  
Dunro  
Dunvil  
East T  
Eastw  
Edward  
Eldon  
Eldora  
Elora  
Do  
Ekfred  
Erie  
Erie an  
Erim  
Essex C  
Ethel  
Everett  
Exeter  
Farran  
Flesher  
Fletche  
Fordwic  
Forrest  
Fort Er  
Fergus  
Fergus  
Galt  
Do  
Do  
Gamebr  
Ganonoc  
Garafr  
Gatmea  
Georget  
Do  
Do  
Gilford  
Glencair  
Glencoe  
Do  
Glen Wi  
Gorrie &  
Goderich  
Goldston  
Goodwar

Elevation  
above mean  
ocean level.

Feet.

757  
900  
647  
1,025  
636  
1,041  
304  
222  
281  
471  
346  
610  
537  
890  
1,122  
183  
844  
340  
253  
255  
318  
602  
406  
407  
942  
649  
507  
929  
648  
621  
616  
846  
867  
229  
628  
1,367  
598  
944  
888  
885  
610  
1,234  
919  
921  
1,007  
847  
297  
322  
611  
589  
590  
750  
604  
734  
643  
393  
749  
769  
797  
192

Station.	Authority.	Elevation above mean ocean level.
Coteau Landing .....	Grand Trunk R. R. ....	161
Courtright (Saint Clair river at).....	Canada Southern R. R. ....	584
Craigleith .....	Northern R. R. ....	590
Craigville .....	Northern R. R. ....	879
Dunby .....	Grand Trunk R. R. ....	438
Denn's .....	Canada Southern R. R. ....	665
Dixville .....	Grand Trunk R. R. ....	1,127
Dobbin's .....	Q., M., O. & O. R. R. ....	227
Dorchester .....	Great Western R. R. ....	852
Drayton .....	W., G. & B. R. R. ....	1,394
Drumbo .....	Credit Valley R. R. ....	1,013
Dublin .....	Grand Trunk R. R. ....	1,104
Dunflu's Creek .....	Grand Trunk R. R. ....	287
Dundalk .....	T., G. & B. R. R. ....	1,701
Dundas .....	Great Western R. R. ....	517
Do. marsh (track over old outlet).....	Great Western R. R. ....	329
Duntroon .....	H. & N. W. R. R. ....	936
Dunville .....	Grand Trunk R. R. ....	585
East Templeton .....	Q., M., O. & O. R. R. ....	155
Eastwood .....	Great Western R. R. ....	973
Edwardsburg (Cardinal) .....	Grand Trunk R. R. ....	277
Eldon junction .....	T. & N. R. R. ....	870
Eldorado .....	Midland R. R. ....	757
Elora .....	W., G. & B. R. R. ....	1,297
Do. junction (Church Falls) .....	Credit Valley R. R. ....	1,260
Ekfred .....	Canada Southern R. R. ....	750
Erie .....	Canada Southern R. R. ....	597
Erie and Niagara railway junction .....	Canada Southern R. R. ....	608
Erin .....	Credit Valley R. R. ....	1,295
Essex Center .....	Canada Southern R. R. ....	646
Ethel .....	W., G. & B. R. R. ....	1,174
Everett .....	H. & N. W. R. R. ....	796
Exeter .....	Great Western R. R. ....	875
Farran's Point .....	Grand Trunk R. R. ....	242
Flesherton (sand and gravel bed) .....	T., G. & B. R. R. ....	1,557
Fletcher .....	Canada Southern R. R. ....	599
Fordwick .....	T., G. & B. R. R. ....	1,200
Forrest .....	Grand Trunk R. R. ....	712
Fort Erie .....	Grand Trunk R. R. ....	606
Fergus .....	W. G. & B. R. R. ....	1,358
Fergus junction .....	Credit Valley R. R. ....	1,357
Galt .....	W., G. & B. R. R. ....	888
Do. ....	Credit Valley R. R. ....	936
Do. ....	Grand Trunk R. R. ....	880
Gambrobridge .....	T. & N. R. R. ....	797
Ganonoque .....	Grand Trunk R. R. ....	261
Garafraxa junction .....	Credit Valley R. R. ....	1,452
Gatineau Point .....	Q., M., O. & O. R. R. ....	175
Georgetown .....	Grand Trunk R. R. ....	847
Do. . . . . junc. (H. & N. W. R. R.) .....	Grand Trunk R. R. ....	874
Do. . . . . (gravel bed) .....	H. & N. W. R. R. ....	891
Gilford .....	Northern R. R. ....	753
Glencairn .....	H. & N. W. R. R. ....	738
Glencoe .....	Great Western R. R. ....	730
Do. . . . . junction .....	Great Western R. R. ....	728
Glen Williams .....	H. & N. W. R. R. ....	910
Gorrie & Wroxeter .....	T., G. & B. R. R. ....	1,123
Goderich .....	Grand Trunk R. R. ....	730
Goldstone .....	W., G. & B. R. R. ....	1,257
Goodward .....	T. & N. R. R. ....	1,090

Feet.



Station.	Authority.	Elevation above mean ocean level.
Gowan .....	Northern R. R. ....	819
Gowanstown .....	W., G. & B. R. R. ....	1,295
Granton .....	Grand Trunk R. R. ....	1,034
Gravenhurst .....	Northern R. R. ....	819
Grenville .....	Q., M., O. & O. R. R. ....	210
Grimshy .....	Great Western R. R. ....	287
Guelph .....	Great Western R. R. ....	1,068
Do .....	W., G. & B. R. R. ....	1,078
Hagersville .....	Canada Southern R. R. ....	740
Hamburg .....	Grand Trunk R. R. ....	1,127
Hamilton .....	Great Western R. R. ....	255
Do..(Wentworth st. south) .....	H. & N. W. R. R. ....	377
Do..(Barton st.) .....	H. & N. W. R. R. ....	277
Do..(Wentworth st. north) .....	H. & N. W. R. R. ....	266
Harley .....	Great Western R. R. ....	837
Harrishburg junction .....	Great Western R. R. ....	734
Do.... June. (with main line G. W. R. R.) .....	W., G. & B. R. R. ....	734
Do.... (track) .....	Great Western R. R. ....	734
Harriston .....	T., G. & B. R. R. ....	1,246
Do .....	W., G. & B. R. R. ....	1,264
Harwick .....	Canada Southern R. R. ....	651
Hastings .....	Midland R. R. ....	635
Hawtreay .....	Canada Southern R. R. ....	786
Hawkestone .....	Northern R. R. ....	779
Hayden's Corners .....	Midland R. R. ....	349
Henfrye .....	W., G. & B. R. R. ....	1,166
Hespeller .....	Wellington, Gray & Bruce R. R. ....	942
Hensall .....	Great Western R. R. ....	899
Highgate .....	Canada Southern R. R. ....	739
Hillsburg junction .....	Credit Valley R. R. ....	1,424
Holland landing .....	Northern R. R. ....	743
Hull .....	Q., M., O. & O. R. R. ....	185
Hyde Park junction .....	Great Western R. R. ....	886
Ilderton .....	Great Western R. R. ....	937
Innerkip .....	Credit Valley R. R. ....	972
Ingersoll .....	Great Western R. R. ....	879
International bridge .....	Grand Trunk R. R. ....	588
Inwood .....	Canada Southern R. R. ....	691
Iona .....	Canada Southern R. R. ....	745
Iroquois .....	Grand Trunk R. R. ....	243
Jarvis .....	Great Western R. R. ....	701
Do.. Loopline crossing .....	H. & N. W. R. R. ....	699
Jordan .....	Great Western R. R. ....	311
Kenpeufeldt .....	Northern R. R. ....	757
Kemptville .....	St. L. & O. R. R. ....	291
Kenilworth .....	T., G. & B. R. R. ....	1,486
Kinloss .....	W., G. & B. R. R. ....	1,046
King .....	Northern R. R. ....	955
Kingsey .....	Grand Trunk R. R. ....	444
Kingstowm .....	Grand Trunk R. R. ....	274
Kinkardine .....	W., G. & B. R. R. ....	590
Kirkfield .....	T. & N. R. R. ....	892
Kleinburg .....	T., G. & B. R. R. ....	715
Komoka .....	Great Western R. R. ....	811
Do.. junction .....	Great Western R. R. ....	822
Lachute .....	Q., M., O. & O. R. R. ....	225
Lake Simcoe .....	Northern R. R. ....	722
Lake Saint Louis .....		66, 75
Lambton .....	Credit Valley R. R. ....	412

Elevation  
above mean  
ocean level.Elevation  
above mean  
ocean level.

	Station.	Authority.	
<i>Fect.</i>			<i>Fect.</i>
819	Lancaster .....	Grand Trunk R. R. ....	165
1, 295	Lansdowne .....	Grand Trunk R. R. ....	334
1, 034	Lefroy .....	Northern R. R. ....	779
819	Lemnoxville .....	Grand Trunk R. R. ....	500
210	Lethbridge .....	Northern R. R. ....	756
287	Lewisville .....	Great Western R. R. ....	615
1, 068	Linchouse .....	Grand Trunk R. R. ....	1, 057
1, 078	Do ... siding .....	Grand Trunk R. R. ....	1, 094
740	Lindsay .....	Midland R. R. ....	851
1, 127	Lisgar .....	Grand Trunk R. R. ....	529
255	Listowel .....	W. G. & B. R. R. ....	1, 263
377	Londesburg .....	Great Western R. R. ....	974
277	London .....	Grand Trunk R. R. ....	815
266	Do ... Richmond street .....	Great Western R. R. ....	806
837	Do ... Thames river, bed .....	Great Western R. R. ....	754
734	Longford .....	Northern R. R. ....	736
	Longwood .....	Great Western R. R. ....	752
734	Lucan .....	Grand Trunk R. R. ....	991
734	Lucknow .....	W. G. & B. R. R. ....	910
1, 246	Luther .....	T., G. & B. R. R. ....	1, 544
1, 264	Lyn .....	Grand Trunk R. R. ....	286
651	Lynden .....	Great Western R. R. ....	757
635	Lyster .....	Grand Trunk R. R. ....	446
786	Madoc .....	Midland R. R. ....	584
779	Midland river (bed) .....	Great Western R. R. ....	942
349	Mallorytown .....	Grand Trunk R. R. ....	336
1, 166	Malton .....	Grand Trunk R. R. ....	550
942	Mandamin .....	Great Western R. R. ....	647
899	Manilla .....	Midland R. R. ....	955
739	Markdale .....	T., G. & B. R. R. ....	1, 359
1, 424	Markham .....	T. & N. R. R. ....	640
743	Mariposa (clay ridge opposite) .....	Midland R. R. ....	884
185	McGowan's lake .....	O. & Q. R. R. ....	571
886	Meadsville .....	Credit Valley R. R. ....	566
937	Menford .....	Northern R. R. ....	674
972	Melbourne .....	Canada Southern Railway .....	735
879	Michigan Air line junction .....	Grand Trunk R. R. ....	723
588	Midland Junction .....	T. & N. R. R. ....	881
691	Mildmay .....	W. G. & B. R. R. ....	1, 030
745	Mile End .....	Q., M., O. & O. R. R. ....	225
243	Millbrook .....	Midland R. R. ....	775
701	Do ... junction .....	T. & N. R. R. ....	772
699	Millikins .....	T. & N. R. R. ....	651
311	Milton .....	H. & N. W. R. R. ....	661
757	Do .....	Credit Valley R. R. ....	663
291	Mimico .....	Great Western R. R. ....	397
1, 486	Minessing .....	Northern R. R. ....	619
1, 046	Mitchell .....	Grand Trunk R. R. ....	1, 122
955	Moira .....	Midland R. R. ....	519
444	Montreal (crossing Wellington street) .....	Grand Trunk R. R. ....	51
274	Do ... (Hochelaga street and Mon- treal avenues) .....	Q., M., O. & O. R. R. ....	20
590	Montreal (Point St. Charles) .....	Grand Trunk R. R. ....	51
892	Do ... (center of Victoria bridge) .....	Grand Trunk R. R. ....	115
715	Do ... (St. Lawrence river, beneath Victoria bridge) .....	Grand Trunk R. R. ....	333
811	Montebello .....	Q., M., O. & O. R. R. ....	172
822	Moorefield .....	W., G. & B. R. R. ....	1, 351
225	Moore's Mine .....	Midland R. R. ....	785
722	Mount Forest .....	T., G. & B. R. R. ....	1, 350
66, 75			
412			

Station.	Authority.	Elevation above mean ocean level.	
		<i>Fect.</i>	
Mount Pleasant.....	Great Western R. R.....	810	Riel
Mount Vernon.....	Great Western R. R.....	837	Riel
Muddy Branch.....	Q., M., O. & O. R. R.....	262	Ridg
Muirkirk.....	Canada Southern R. R.....	725	Ridg
Muskoka lake.....	Northern R. R.....	747	Rip
Newbury.....	Great Western R. R.....	702	Rivi
Newcastle.....	Grand Trunk R. R.....	296	Ro
New Haven.....	Grand Trunk R. R.....	629	Ro
New Market.....	Northern R. R.....	772	Ro
Newry.....	W., G. & B. R. R.....	1,204	Ro
Newtonville.....	Grand Trunk R. R.....	294	Sain
North Hastings junction.....	Midland R. R.....	516	Sain
Norval.....	Grand Trunk R. R.....	819	Sain
Norwich.....	Great Western R. R.....	844	Sain
Nottawa.....	H. & N. W. R. R.....	707	
Oakville.....	Great Western R. R.....	340	Sain
Oil City.....	Canada Southern R. R.....	663	Sain
Onondaga.....	Grand Trunk R. R.....	664	Sain
Orangeville.....	Credit Valley R. R.....	1,358	Sain
Do.....	T., G. & B. R. R.....	1,398	Sain
Do..... junction.....	T., G. & B. R. R.....	1,616	Sain
Orillia.....	Northern R. R.....	726	Sain
Oslawa.....	Grand Trunk R. R.....	333	
Ottawa.....	St. L. & O. R. R.....	133	Sain
Owen Sound.....	T., G. & B. R. R.....	586	Sain
Page.....	T., G. & B. R. R.....	1,283	Sain
Paitley.....	W., G. & B. R. R.....	776	Sain
Palmerston.....	W., G. & B. R. R.....	1,314	Sain
Papineauville.....	Q. M. & O. R. R.....	155	Sain
Paris.....	Great Western R. R.....	842	Sain
Parkhill.....	Grand Trunk R. R.....	663	Sain
Penetanguishene.....	Northern R. R.....	587	
Perch.....	Grand Trunk R. R.....	595	Sermi
Perry.....	Canada Southern R. R.....	590	
Perrytown.....	Midland R. R.....	652	D
Perth.....	O. & Q. R. R.....	431	Seant
Peterboro.....	T. & N. R. R.....	650	Seant
Petersburgh.....	Grand Trunk R. R.....	1,211	Seaf
Phelpston.....	Northern R. R.....	724	Sebr
Pinkerton.....	W., G. & B. R. R.....	861	Senec
Point Clair.....	Grand Trunk R. R.....	109	Sever
Pointe au Chêne.....	Q., M., O. & O. R. R.....	188	
Pontypool.....	O. & Q. R. R.....	1,004	
Port Colborne.....	Grand Trunk R. R.....	581	Shak
Do.....	Welland R. R.....	586	Shar
Port Elgin.....	W., G. & B. R. R.....	675	Shed
Port Hope.....	Grand Trunk R. R.....	287	Shell
Port Huron.....	Grand Trunk R. R.....	588	Sher
Port Perry.....	Midland R. R.....	839	Sime
Port Robinson.....	Welland R. R.....	589	Some
Port Stanley (level Lake Erie).....	Great Western R. R.....	574	Sout
Port Union.....	Grand Trunk R. R.....	263	Sout
Prescott.....	Grand Trunk R. R.....	310	Sout
Do..... junction.....	Grand Trunk R. R.....	303	Seath
Preston.....	Wellington, Gray & Bruce R. R.....	927	Sprin
Princeton.....	Great Western R. R.....	932	Sprin
Proton.....	T., G. & B. R. R.....	1,613	Stant
Point Levi (opposite Quebec).....	Grand Trunk R. R.....	14	Stay
Quay's.....	Midland R. R.....	481	Stev
Richby.....	Grand Trunk R. R.....	819	Stirl

Elevation  
above mean  
ocean level.

	Station.	Authority.	
	Richmond .....	Grand Trunk R. R.	
	Richmond Hill (gravel pit).....	Northern R. R.	
	Rideau.....	Grand Trunk R. R.	
	Ridgetown.....	Canada Southern R. R.	
	Ripley siding.....	W., G. & B. R. R.	
	Rivière Baudette.....	Grand Trunk R. R.	
	Rockford.....	T., G. & B. R. R.	
	Rockpass.....	Northern R. R.	
	Rockwood.....	Grand Trunk R. R.	
1, 204	Rodney.....	Canada Southern R. R.	
	Saint Agassiz.....	Grand Trunk R. R.	
	Saint Anne.....	Grand Trunk R. R.	
	Saint Bruno.....	Grand Trunk R. R.	
	Saint Catharines.....	Great Western R. R.	
	Do..... (old station).....	Welland R. R.	
	Saint Clair junction.....	Canada Southern R. R.	
	Saint Cyr siding.....	Grand Trunk R. R.	
	Saint Hermas.....	Q., M., O. & O. R. R.	
1, 358	Saint Hilaire.....	Grand Trunk R. R.	
1, 398	Saint Hulbert's.....	Grand Trunk R. R.	
1, 616	Saint Janvier.....	Q., M., O. & O. R. R.	
	Saint Jerome.....	Q., M., O. & O. R. R.	
	Do..... junction.....	Q., M., O. & O. R. R.	
	Saint Julie.....	Grand Trunk R. R.	
	Saint Lambert's junction.....	Grand Trunk R. R.	
1, 283	Saint Madeline's.....	Grand Trunk R. R.	
	Saint Mary's.....	Grand Trunk R. R.	
1, 314	Saint Paul's.....	Grand Trunk R. R.	
	Saint Rose.....	Q., M., O. & O. R. R.	
	Saint Scholastique.....	Q., M., O. & O. R. R.	
	Saint Thomas.....	Canada Southern R. R.	
	Do.....	Great Western R. R.	
	Sarnia.....	Grand Trunk R. R.	
	Do, water, in Saint Clair river.....	Grand Trunk R. R.	
	Do, (near Lake Huron).....	Great Western R. R.	
	Scarbon's.....	Northern R. R.	
	Scarboro junction.....	Grand Trunk R. R.	
1, 211	Seaforth.....	Grand Trunk R. R.	
	Schringville.....	Grand Trunk R. R.	
	Seneea (Caledonia).....	Grand Trunk R. R.	
	Severn.....	Northern R. R.	
	Do (crossing of plank-road).....	H. & N. W. R. R.	
1, 004	Do, river.....	Northern R. R.	
	Shakespeare.....	Grand Trunk R. R.	
	Sharbot lake.....	O. & Q. R. R.	
	Shedden.....	Canada Southern R. R.	
	Shelburne.....	T., G. & B. R. R.	
	Sherbrooke.....	Grand Trunk R. R.	
	Simcoe.....	Great Western R. R.	
	Somerset.....	Grand Trunk R. R.	
	Southampton.....	W., G. & B. R. R.	
	South Durham.....	Grand Trunk R. R.	
	Southeastern R. R. junction.....	Grand Trunk R. R.	
	Scathvold.....	Canada Southern R. R.	
	Springfield.....	Canada Southern R. R.	
	Springford.....	Great Western R. R.	
	Stanford.....	Grand Trunk R. R.	
1, 613	Stayner.....	Northern R. R.	
	Stevensville.....	Canada Southern R. R.	
	Stirling.....	Midland R. R.	

Elevation  
above mean  
ocean level.

Feet.

391

847

303

660

507

173

912

777

1153

633

406

124

98

357

375

765

482

257

56

91

220

311

135

475

76

119

1, 053

1, 166

85

232

766

758

577

582

589

741

546

1, 009

1, 172

672

725

653

711

1, 184

636

726

1, 629

486

719

442

516

609

321

745

796

892

128. 25

717

589

415

Station.	Authority.	Elevation above mean ocean level.
		<i>Feet.</i>
Stoco lako .....	O. & Q. R. R. ....	457
Stony Point .....	Great Western R. R. ....	587
Stoney Creek .....	Great Western R. R. ....	275
Stonyville .....	T. & N. R. R. ....	892
Stratford .....	Grand Trunk R. R. ....	1,190
Do.... (bed of Avon river) .....	Grand Trunk R. R. ....	1,139
Strathroy .....	Great Western R. R. ....	747
Do .....	Great Western R. R. ....	722
Streetsville .....	Credit Valley R. R. ....	499
Do .... junction .....	Credit Valley R. R. ....	553
Summit .....	T. & N. R. R. ....	910
Summit .....	Midland R. R. ....	910
Sunderland .....	T. & N. R. R. ....	851
Sunnidale .....	Northern R. R. ....	622
Tavistock .....	Grand Trunk R. R. ....	1,137
Taylor .....	Canada Southern R. R. ....	723
Tecumseh .....	Great Western R. R. ....	590
Teeswater .....	T., G. & B. R. R. ....	1,024
Thamesville (bed of river) .....	Great Western R. R. ....	587
Do .... bridge .....	Great Western R. R. ....	623
Thorndale .....	Grand Trunk R. R. ....	936
Thompson .....	Northern R. R. ....	792
Thornbury .....	Northern R. R. ....	612
Thornhill .....	Northern R. R. ....	633
Thornton .....	H. & N.W. R. R. ....	942
Thorold .....	Welland R. R. ....	553
Thurso .....	Q., M. & O. R. R. ....	186
Tilbury .....	Canada Southern R. R. ....	592
Tilsonburg .....	Canada Southern R. R. ....	806
Do .... crossing (Canada Southern) .....	Great Western R. R. ....	797
Toronto .....	Great Western R. R. ....	255
Do. (Queen st. junction) .....	T., G. & B. R. R. ....	304
Do .....	Grand Trunk R. R. ....	254
Do. (Lake Ontario) .....	Grand Trunk R. R. ....	246
Trenton .....	Grand Trunk R. R. ....	265
Tweed village .....	O. & Q. R. R. ....	571
Tyendinaga .....	Grand Trunk R. R. ....	336
Unionville .....	T. & N. R. R. ....	577
Upton .....	Grand Trunk R. R. ....	204
Uxbridge .....	T. & N. R. R. ....	877
Vandrenil .....	Grand Trunk R. R. ....	93
Victoria .....	Canada Southern R. R. ....	607
Do. .... junction .....	Midland R. R. ....	853
Villa Nova .....	Canada Southern R. R. ....	732
Walkemar .....	T., G. & B. R. R. ....	1495
Walker's .....	Canada Southern R. R. ....	732
Walkerton .....	W., G. & B. R. R. ....	933
Wanstead .....	Great Western R. R. ....	702
Warwick .....	Grand Trunk R. R. ....	481
Washago .....	Northern R. R. ....	729
Waterdown .....	Great Western R. R. ....	345
Waterford .....	Canada Southern R. R. ....	763
Waterloo .....	Grand Trunk R. R. ....	1,858
Waterville .....	Grand Trunk R. R. ....	646
Watford .....	Great Western R. R. ....	787
Welland .....	Canada Southern R. R. ....	589
Do .....	Welland R. R. ....	602
Weston .....	Northern R. R. ....	784
Whitby .....	Grand Trunk R. R. ....	623
Do .....	Midland R. R. ....	288

Elevation  
above mean  
ocean level.

*Feet.*  
..... 457  
..... 587  
..... 275  
..... 892  
1, 190  
1, 139  
..... 747  
..... 722  
..... 499  
..... 553  
..... 910  
..... 910  
..... 851  
..... 629  
1, 137  
..... 723  
..... 590  
1, 024  
..... 587  
..... 623  
..... 936  
..... 792  
..... 612  
..... 633  
..... 942  
..... 553  
..... 186  
..... 592  
..... 806  
..... 797  
..... 255  
..... 304  
..... 254  
..... 246  
..... 265  
..... 571  
..... 336  
..... 577  
..... 204  
..... 877  
..... 93  
..... 607  
..... 853  
..... 732  
1495  
..... 732  
..... 933  
..... 702  
..... 481  
..... 729  
..... 345  
..... 763  
1, 858  
..... 646  
..... 787  
..... 589  
..... 602  
..... 524  
..... 603  
..... 528

Station.

Authority.

Elevation  
above mean  
ocean level.

*Feet.*  
..... 682  
..... 856  
1, 212  
..... 582  
..... 420  
..... 817  
..... 1082  
..... 285  
..... 962  
..... 558  
..... 619  
..... 947  
..... 957  
..... 896  
..... 897  
..... 772  
..... 712  
..... 65  
..... 672  
..... 406

Widder.....	Grand Trunk R. R.....	
Wick's.....	T. & N. R. R.....	
Williamsford.....	T. G. & B. R. R.....	
Windsor, Ontario.....	Great Western R. R.....	
Windsor, Quebec.....	Grand Trunk R. R.....	
Windham.....	Canada Southern R. R.....	
Wingham.....	Great Western R. R.....	
Winona.....	Great Western R. R.....	
Wolverton.....	Great Western R. R.....	
Woodbridge.....	Credit Valley R. R.....	
Woodlee.....	T. G. & B. R. R.....	
Woodstock.....	Canada Southern R. R.....	
Do.....	Credit Valley R. R.....	
Woodville.....	Great Western R. R.....	
Do junction.....	T. & N. R. R.....	
Wyeville.....	Midland R. R.....	
Wyoming.....	Northern R. R.....	
Yamaska river-bed.....	Great Western R. R.....	
York.....	Grand Trunk R. R.....	
Yorkville.....	Northern R. R.....	
	O. & Q. R. R.....	

(493)



