



# Sterlingworth



ESTABLISHING  
OUR CLAIM  
FOR INDESTRUCTIBILITY



GENERAL OFFICES AND WORKS:  
EASTON, PENNA.

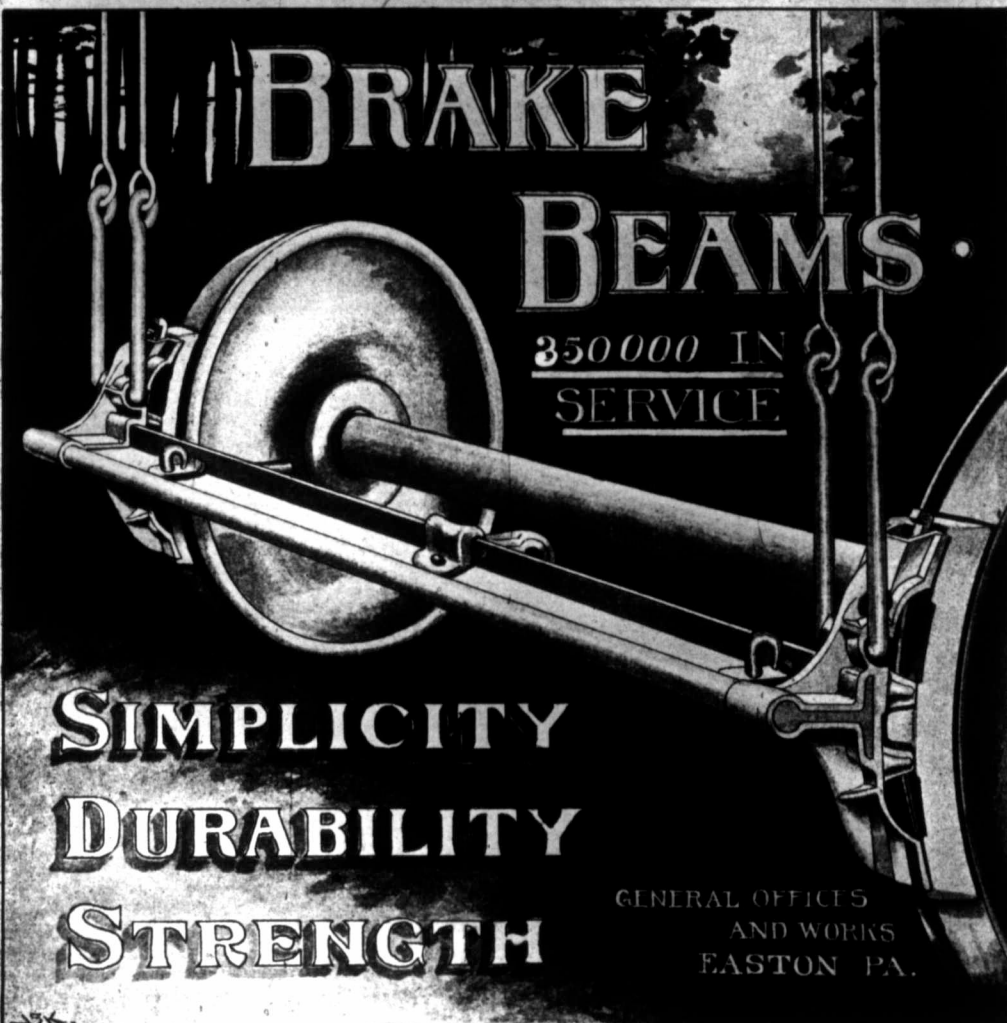
NEW YORK OFFICE.  
HOME LIFE BLDG., 256 BROADWAY

CHICAGO OFFICE.  
506 GREAT NORTHERN BLDG.

PHILADELPHIA OFFICE.  
1106 REAL ESTATE TRUST BLDG.

MONTREAL OFFICE.  
185 ST. JAMES STREET

# STERLINGWORTH ROLLED STEEL



## BRAKE

## BEAMS

350 000 IN  
SERVICE

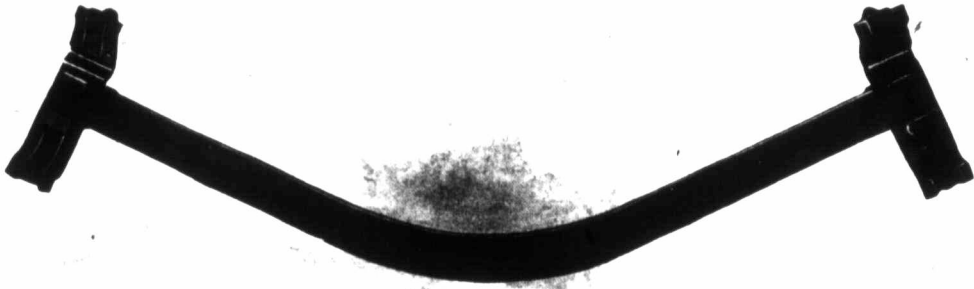
**SIMPLICITY**

**DURABILITY**

**STRENGTH**

GENERAL OFFICES  
AND WORKS  
EASTON PA.

The Standard



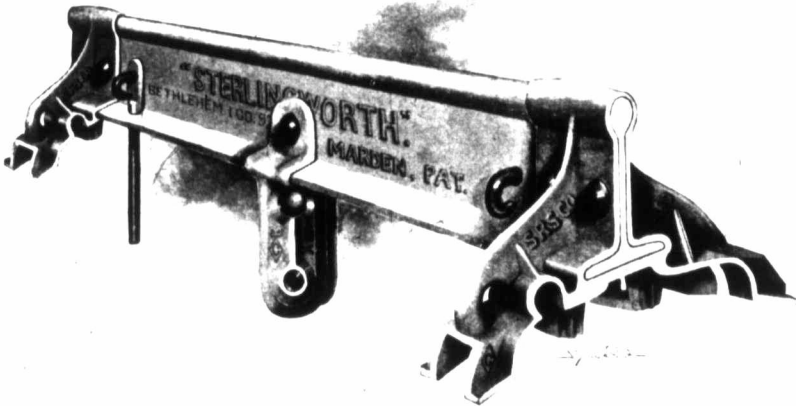
OUR STANDARD.

Result of a wreck in which a number of cars were demolished.

Illustrating Our Claim for Individuality.

**THIS BEAM** was under a Swift refrigerator car. The guide pins and fulcrum alone were destroyed. The Beam itself was straightened at our blacksmith forge without any special tools, and restored to service at a labor charge of fifteen cents. This clearly indicates that the Beam proper cannot be actually destroyed.

All Other



OUR STANDARD.

Showing same Beam restored to its normal condition, ready for service.

Illustrating Our Claim for Individuality.

## The Sterlinaworth Brake Beam Sections are Guaranteed for 'Ten Years' Service.

W. M. STERLINA, President, M. C. B. Association.



Has its strength in its natural form, and not depending upon a combination of parts tied together under compression.

Mechanically one piece, insuring greater durability; practically indestructible, and could be safely guaranteed for twenty years. Takes the hanger at point recommended by M. C. B. Association.

Heads and inferriums can be replaced at all inspection points, if necessary, without special tools of any kind.

The section, if bent or twisted by accident, can be straightened at any blacksmith forge, and returned to service.

The head and infernum, if broken from their positions on the beam, would not, in the least, injure the section. All other types would be destroyed by blows or accidents of this character.

Heads interchangeable with each other, requiring but one half the investment of stock, on account of maintenance.

Weight of metal back of heads and equal distribution of same throughout eliminates all quivering caused by torsional strains when brakes are applied, and also increases the efficiency of braking power.

Stronger against torsional strains, caused by one shoe adhering to wheel more firmly than the other; also a stronger connection between the malleables and section than any other beam in the market. These are inherent defects in almost all other types of metal beams.

The one size of beam is adapted to passenger, tender, and freight service, eliminating the necessity for carrying in stock two standards.

