

PETERBOROUGH



TC

F

5547

. 4134

*"The Electric City"*

# PETERBOROUGH

ONTARIO



CANADA

## Views of City and District

WITH INFORMATION FROM OFFICIAL SOURCES

*PRICE TWENTY-FIVE CENTS*

Compiled by J. A. McElhiney and E. R. Hensley

REVIEW PRINT

ROY PHOTOS

10 F5547. P4M34  
Peterborough's Parliamentary Representatives



J. H. BURNHAM, M.P. (West Peterborough)



E. A. PECK, M.L.A. (West Peterborough)

## Peterborough, Ontario, Canada



PETERBOROUGH, Ontario, Canada, the county seat of Peterborough County, is situated on the River Otonabee, and occupies a site of great natural beauty, with the river flowing through it, and several hills within and around it, and is one of the most prosperous, progressive and attractive places in the Dominion. The growth of the City, especially during the last few years, has been rapid, owing to the industrial development that has taken place, and in attractiveness and beauty it has kept pace with the expansion and increase of population.

The first settlement on the site of Peterborough was in 1819. The town plot was laid out in 1825, and in 1827 the name Peterborough was adopted for the embryo city. It is in the centre of a rich agricultural section and lies between the two chief business centres, Montreal and Toronto.

The city has several very fine parks, through which wind attractive driveways and walks, and the beauty of which is enhanced by streams which flow through them. Its public buildings are in keeping with the progress of the City, and include the Armouries, Post Office, the Customs and Inland Revenue Offices.

The City is somewhat proud of its educational institutions, which include a Provincial Normal School for teacher training, a Collegiate Institute and eight Public Schools. It has, in addition, a fine Public Library. The principal religious denominations have excellent churches, these being twelve edifices for public worship, and in addition, handsome and commodious buildings for the Young Men's Christian Association and the Young Women's Christian Association. Of the churches, St. John's (Church of England) occupies a commanding and beautiful site and possesses the heaviest set of chimes in Canada. Three Hospitals, each well equipped, are provided for caring for the sick, and there are two homes for old people and two for dependent children.

Peterborough is served by the two great Canadian rail-

ways, the Canadian Pacific and the Grand Trunk, and their branches, and is on the Trent Waterway, which consists of a series of navigable rivers and lakes connected by short canals, and stretches from Lake Ontario to the Georgian Bay. On the waterway at Peterborough, there is a hydraulic lift lock, in which the height of the lift is sixty-five feet. It is constructed of concrete with steel boat chambers, and is the largest monolithic mass of concrete in the world, containing over 26,000 cubic yards. The actual time used in raising a steamer the sixty-five feet is one and one-half minutes.

One of the features of the City is its supply of hydro-electric power. Several powers on the Otonabee River and connecting waters have been developed, and others are being developed, and as fast as it may be called for, 30,000 horse power of hydro-electric power can be supplied. This, with the fact that the extensive works of the Canadian General Electric Company are located here, has given to Peterborough the name of "The Electric City."

The central location of the city, its shipping facilities and its abundant power have attracted and developed a number of prosperous manufacturing industries and resulted in an increase in population in the past ten years of over 70 per cent., the population now being about 23,000.

The City has all the facilities of a progressive community, including an electric street railway, complete waterworks and sewer systems, efficient fire protection, theatres, conservatory of music, and wholesale and retail mercantile establishments.

The summer resorts adjacent to Peterborough are celebrated ones, including Stoney Lake with its picturesque islands, Cheung Lake with its beautiful park, and the Otonabee River and Rice Lake with their numerous attractive resorts.

Peterborough is progressive and prosperous; a city of natural advantages, acquired facilities and rapid growth; a centre of business and beauty, of utility and pleasure.

CITY COUNCIL  
OF  
PETERBOROUGH



J. S. SAUNDERS



W. LANGFORD



O. W. GREEN



W. BULLER  
MAYOR



W. J. JOHNSON



J. J. DUFFUS



W. H. INTYRE



O. N. GORDON



A. H. STRATTON



J. C. ANDERSON



O. H. LUNCASTER

1914

# The Peterborough Board of Trade



*President*  
B. D. HALL, Barrister-at-Law  
Director, Barrie's Limited  
Director, The Morgan Hardware Co. Limited



*Vice-President*  
W. C. ACKERMAN  
Manufacturer



*Secretary*  
A. N. ALLISON  
Managing Director, A. N. Allison & Co.



*Treasurer*  
JAMES H. HAMILTON  
Managing Director  
The Peter Hamilton Company Limited

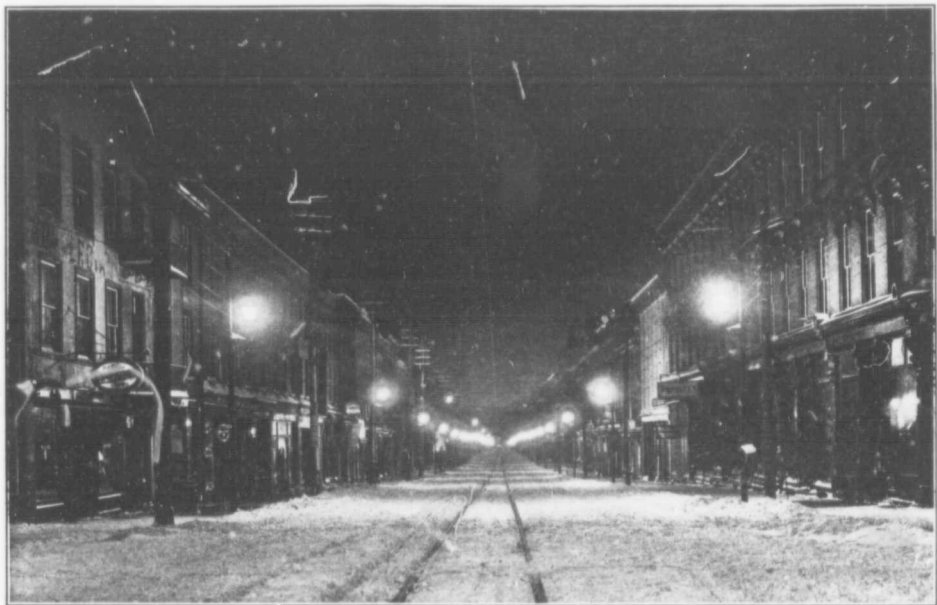
## *Executive Council*

HIS WORSHIP MAYOR W. H. BULLER  
W. H. BRADBURN, Capitalist  
W. H. BREYFOGLE, General Manager, De Laval Dairy Supply Co. Limited  
N. H. CAMPBELL, Local Manager, The Campbell Flour Mills Company  
G. O. CAMERON, Local Manager, The Bell Telephone Company  
A. E. COULTHARD, Managing Director, Colonial Weaving Company Limited  
W. H. DENHAM, Superintendent, Quaker Oats Company  
R. M. GLOVER, Managing Director, The Peterborough Examiner Limited  
J. JOHN, Tea Merchant  
T. F. MATTHEWS, Sec'y-Treasurer, Matthews-Blackwell Limited  
H. P. MORGAN, Managing Director, The Morgan Hardware Company Limited

J. A. McNABB, Advertising Manager, Richard Hall & Son Limited  
W. H. MUNRO, Manager, Peterborough Light and Power Co.  
Peterborough Radial Railway Co.  
E. N. McWILLIAMS, Merchant.  
C. H. PENNEFATHER, Manager, Union Bank of Canada  
F. L. ROY, Photographer  
N. H. SUTTON, Physician  
A. F. TOMLINS, Manager, Bank of Nova Scotia  
J. J. TURNER, Jr., Manufacturer, Tents and Camp Supplies  
J. W. WORTH, Superintendent, Bonner-Worth Company Limited



GEORGE STREET: LOOKING NORTH



GEORGE STREET AT MIDNIGHT: LOOKING SOUTH

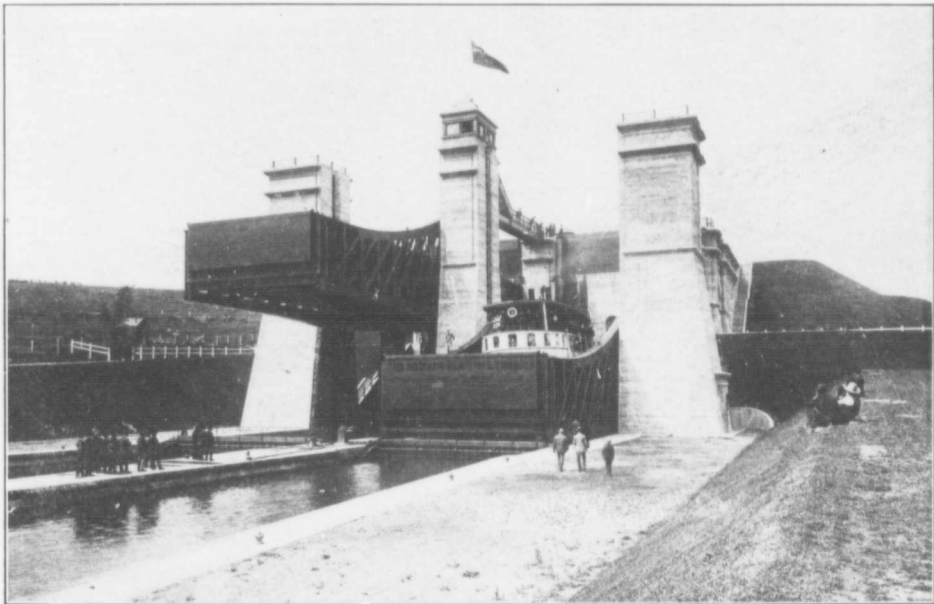




BIRD'S-EYE VIEW OF PETERBOROUGH: SHOWING CENTRAL PARK, ARMORIES AND COLLEGIATE INSTITUTE



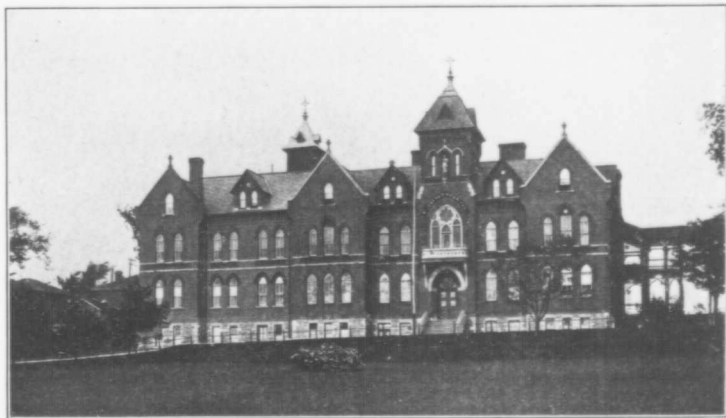
VICTORIA PARK: SHOWING COURT HOUSE IN BACK GROUND



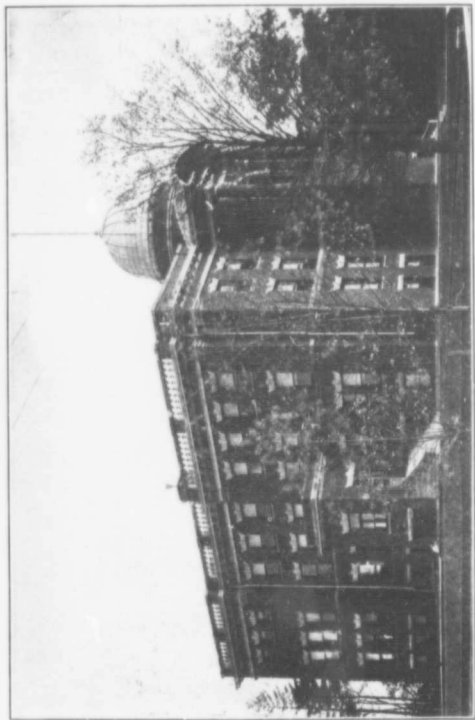
HYDRAULIC LIFT LOCK ON TRENT CANAL: LARGEST OF ITS KIND IN THE WORLD



NICHOLLS HOSPITAL



ST. JOSEPH'S HOSPITAL



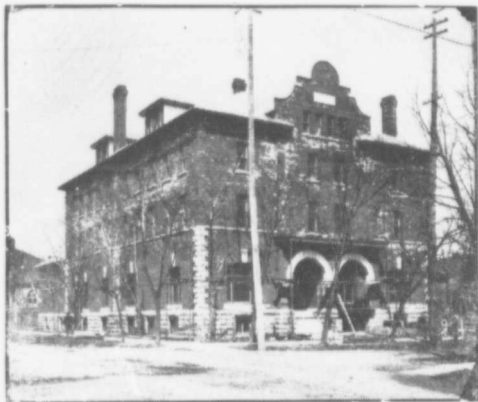
NORMAL SCHOOL AND CITY HALL BUILDINGS



THE PUBLIC LIBRARY



THE PUBLIC LIBRARY: INTERIOR VIEW



PETERBOROUGH Y. W. C. A.



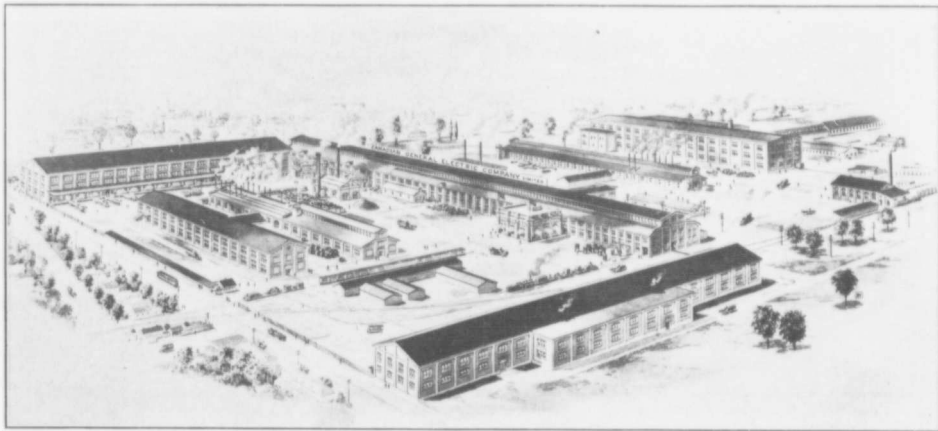
SCENE IN VICTORIA PARK



"The Peterborough" in the early days of the city



Peterborough, N.B.



THE CANADIAN GENERAL ELECTRIC COMPANY'S PLANT

The ground consists of about forty-five acres with two Power Plants, four and six miles away, with a capacity of about 3000 Horse Power. Under normal conditions about eighteen hundred hands are employed, manufacturing all kinds of Electrical Apparatus, Generators, Motors, Switch Boards, Transformers, Incandescent Lamps, Insulated Wire and all accessories thereto.

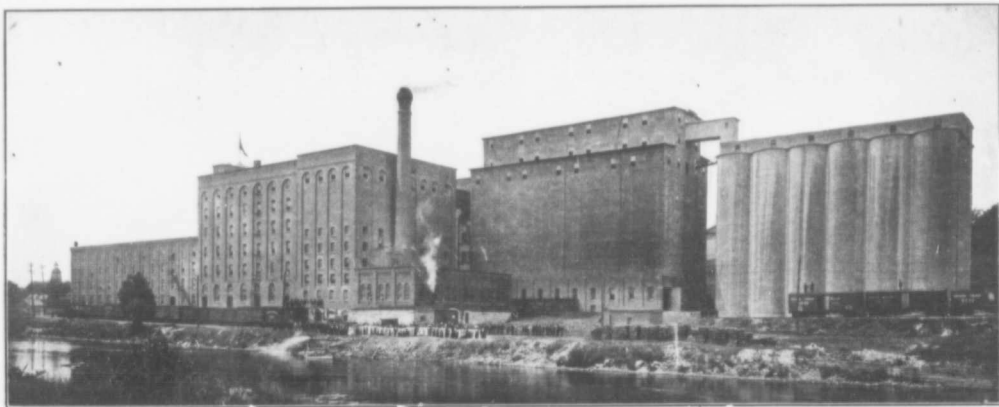
As large generators as have been built in the world have been erected here. The C. G. E. Co. have supplied most of the large Power Plants in Canada with either all their apparatus or

the larger part. Amongst them are the following :

Ontario Power Company, Niagara Falls.  
Electrical Development Company, Niagara Falls.  
West Kootenay Power Company.  
City of Calgary.  
Winnipeg Electric Railway Company.  
Seymour Power Company.

and many others too numerous to mention, in fact there is hardly an operating company in Canada not using their apparatus.





THE QUAKER OATS COMPANY'S PLANT

The accompanying cut will give some idea of the immense plant of the Quaker Oats Company, although two very large buildings, one seven storey building and a large warehouse, 280 feet long by 60 feet in width, four storeys and basement, are hidden from view.

This is the plant wherein are manufactured the World's Breakfast Food, "Quaker Oats" and other Quaker quality products, such as Quaker Flour, Puffed Wheat and Puffed Rice.

This Company, adopted years ago the trade mark of the "Quaker" representing "Purity" and the excellence and purity of their products is in direct keeping with their trade mark. A visit to the plant cannot help but impress one that the trade mark is appropriate.

The Quaker Oats Company at Peterborough are immense consumers of grain. The large elevators, shown in the above cut, have a capacity of 1,300,000 bushels and the yearly consumption of grain in bushels would fill the elevators over five times during the year. This immense plant receives and ships out daily about forty carloads. The daily consumption of grain is approximately 35,000 bushels.

The entire plant is operated by electrical power, generated by water power on their own premises a short distance up the river, where a total of 3,500 H.P. is developed.

One cannot help but be impressed with the automatic methods of handling the grain, etc., from its receipt in cars until the product is delivered into packages and finally into cases for shipment. Each step is done by machinery—neither the grain nor the product comes in contact with human hands during the whole process. The unloading is done by machinery. The oats are then cleaned thoroughly; all chaff, dust, foreign grains and small oats are removed and disposed of as offal, only the best part of the oats continues on through the process of being thoroughly dried, graded and milled. In the process of milling, hundreds of machines are used for the purpose of separating the groats (berries with the hull

removed) from any oats which are unbulled. This is a very intricate and interesting process. The groats are again graded as to diameter, so as to assure perfect rolling. At the rolls the groats are sterilized and finally rolled into a flake. The product then goes through further machinery in order to remove any flakes, which become broken in the rolling, or any dust which might be caused by conveying the flakes from the rolls to the Package Department.

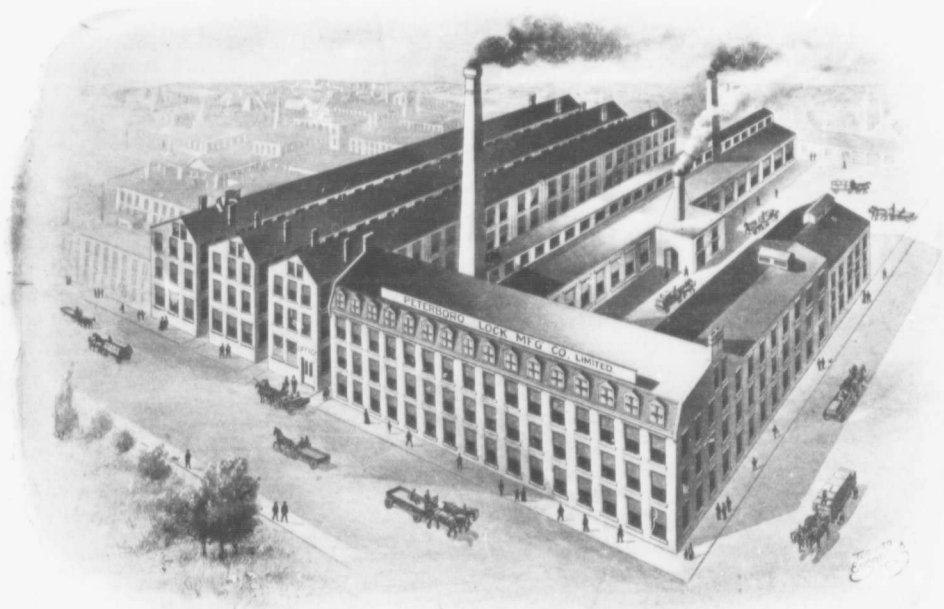
The Package Department is especially interesting from the fact that about two hundred girls are employed, each one wearing a white apron uniform and cap. This Department alone creates a very great impression to the on-looker, as regards cleanliness. The Rolled Oats are automatically weighed, delivered on to carriers, past the girls who do the wrapping and after being wrapped are replaced on the carrier and carried through the drier to the Casing Room, where the packages are cased ready for shipment.

This Company sends immense quantities of Quaker Oats to Great Britain, in fact handles all the export trade.

Practically everything used in the plant is made on the premises. Box machines are working constantly, making up boxes, scoring and gluing machines for the making up of cartons and shells, and barrel and keg machines for making up barrels and kegs.

This plant employs five hundred people, the great majority of the employees have been with the Company since its inception in Peterborough in 1902.

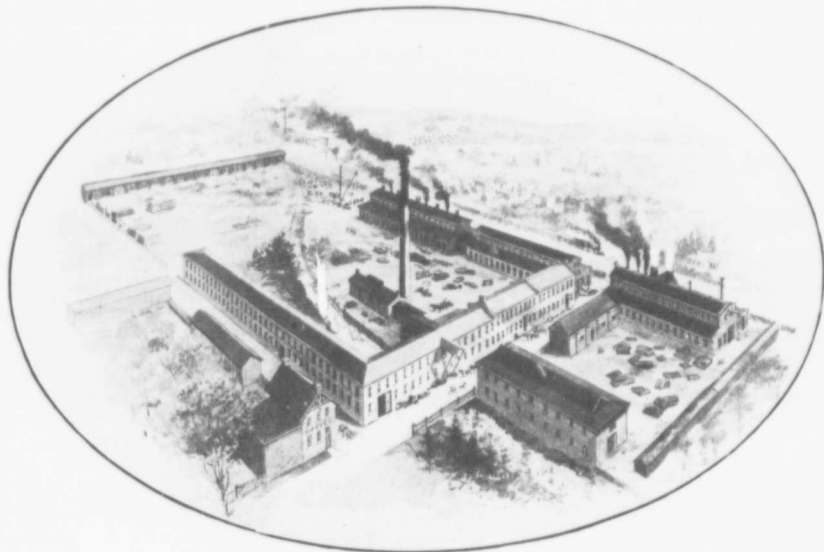
On account of the exceptional quality of its products, the requirements of the business are constantly increasing. It is already the largest and finest oatmeal milling industry in Canada. The plant has a total capacity of 5,000 barrels, and with few interruptions runs practically the year round on a twenty-four hour basis from Sunday midnight to Saturday midnight.



THE PETERBOROUGH LOCK WORKS

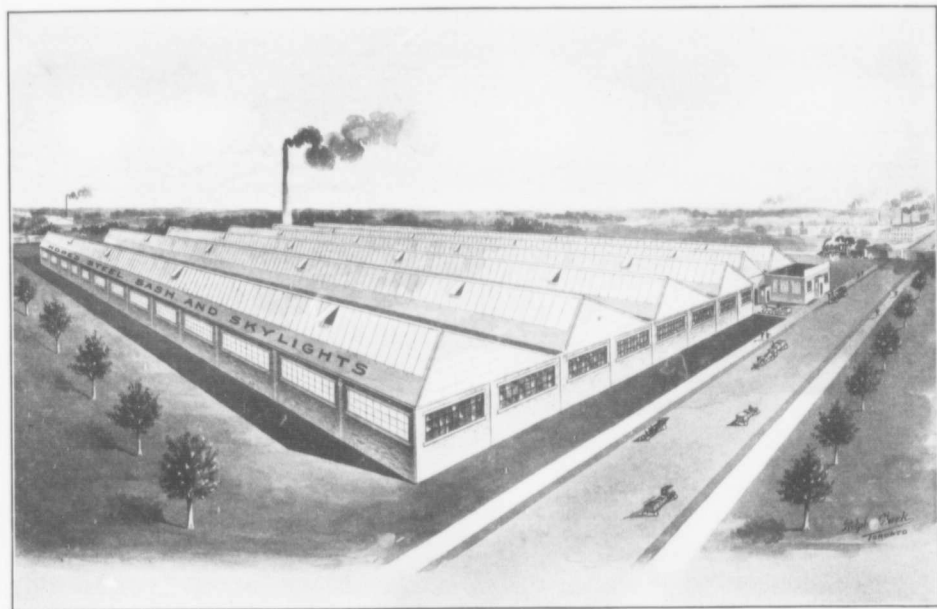


THE DE LAVAL DAIRY SUPPLY COMPANY'S PLANT

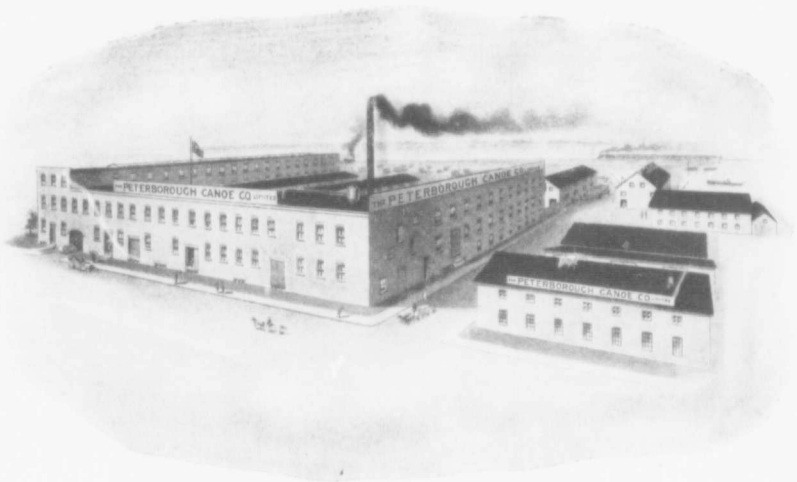


THE WILLIAM HAMILTON COMPANY'S PLANT

This Company manufactures Sawmill Machinery and Water Wheels, in addition to which they have a large steel shop for turning out Steel Pipes, Tanks, Smoke Stacks, and other steel structures. They have also taken up the manufacture of Centrifugal Pumps. Usually they employ from 150 to 175 men.



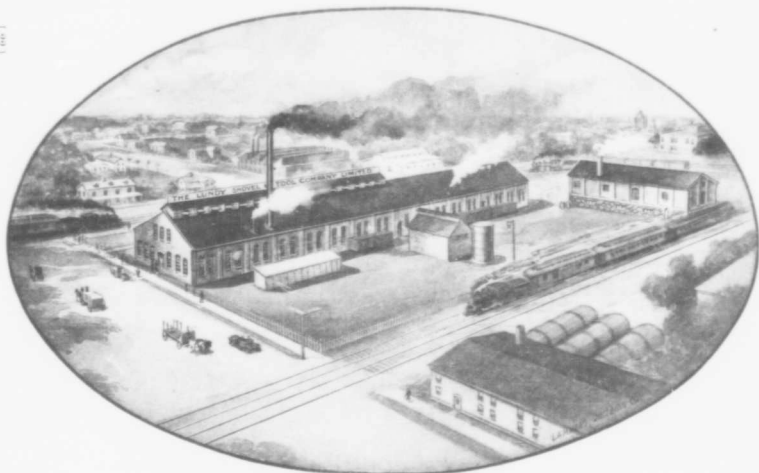
THE HENRY HOPE MANUFACTURING PLANT



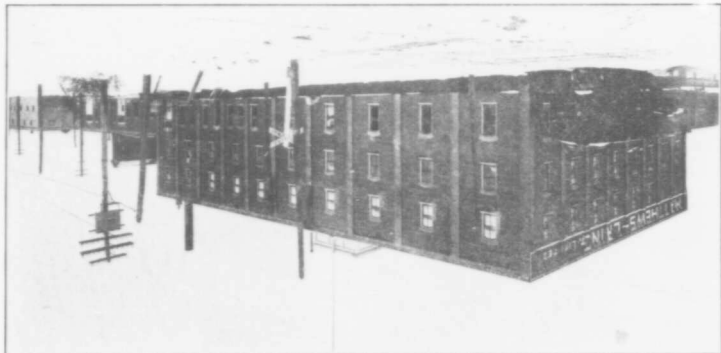
THE PETERBOROUGH CANOE CO'S PLANT



THE AUBURN WOOLEN MILLS



THE LUNDY SHOVEL AND TOOL WORKS



Largest Harnes Manufacturers in Canada with Branch and Warehouse at Regina, Sask.

B. F. ACKERMAN, SON & CO.'S PLANT





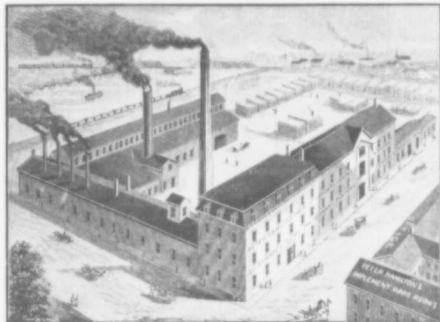


[ 24 ]

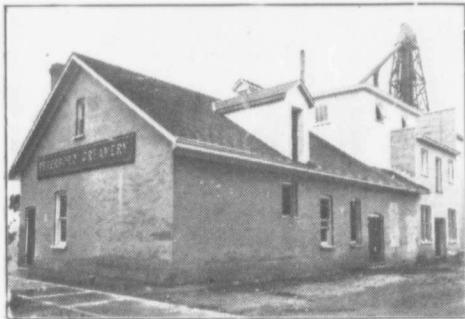
J J TURNER & SONS  
Largest Sail, Tent and Awning Factory in Canada



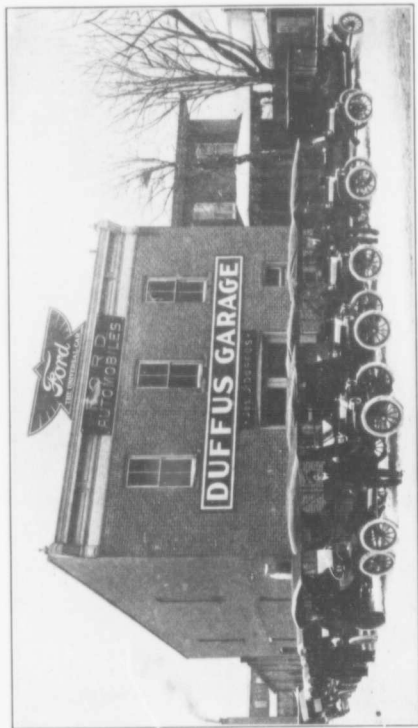
THE CANADIAN CANOE CO.'S PLANT  
"Canadian" Canoes are sold extensively in England as well as in other parts of the British Empire



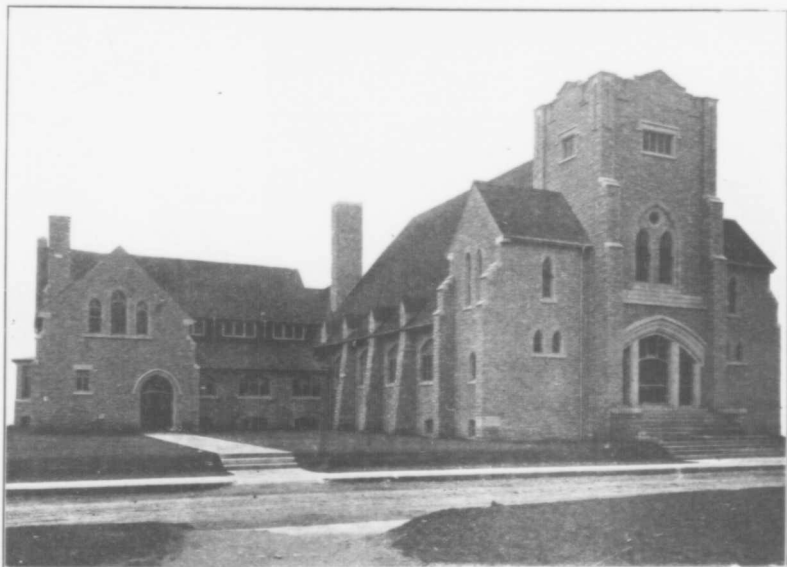
PETER HAMILTON CO.  
Manufacturers of Farm Implements, etc.



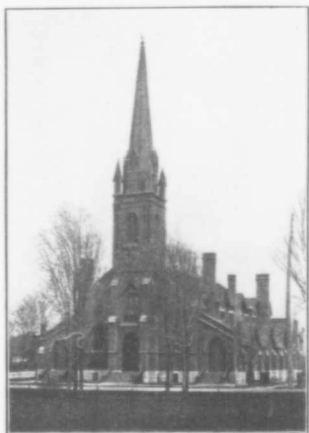
PETERBOROUGH CREAMERY  
Plant being doubled this season



THE DUFFUS GARAGE  
Home of Ford and Reo Cars at Peterborough



MURRAY STREET (BAPTIST) CHURCH



ST. PAUL'S (PRESBYTERIAN) CHURCH

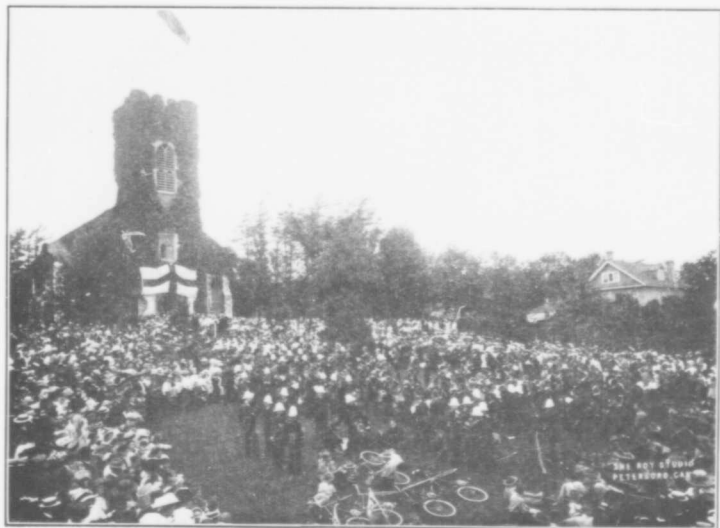


GEORGE STREET (METHODIST) CHURCH

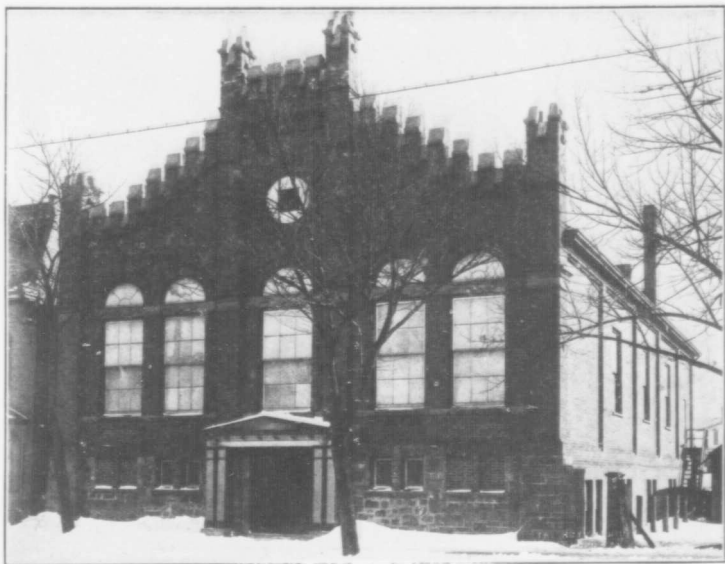
SACRED HEART ROMAN CATHOLIC CHURCH



[ 57 ]



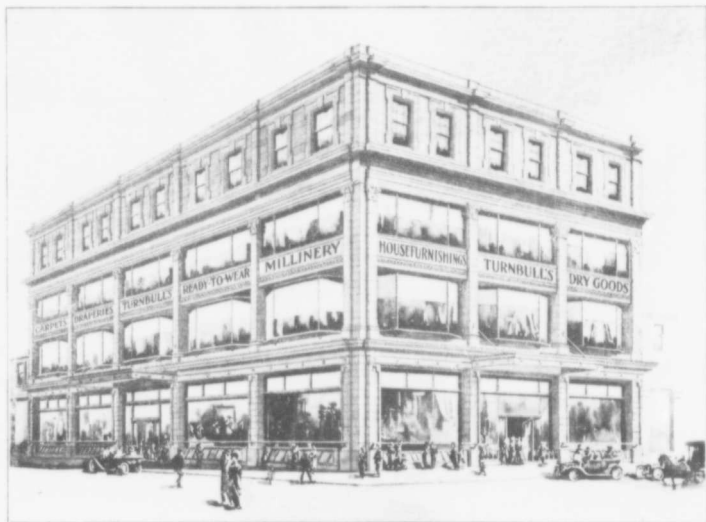
ST. JOHN'S (ANGLICAN) CHURCH



THE SALVATION ARMY TEMPLE



THE PETERBOROUGH PROTESTANT HOME



THE TURNBULL CO'S DEPARTMENTAL STORE



RICHARD HALL & SON: DEPAR'MENTAL STORE



THE CRESSMAN CO. LIMITED  
DEPARTMENTAL STORE



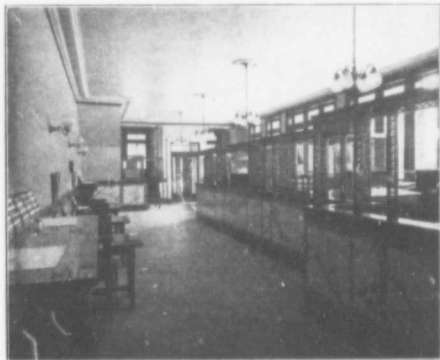
THE NEILL SHOE STORE



INTERIOR VIEW OF THE NEILL STORE



THE DOMINION BANK  
JOHN CRANE Manager



INTERIOR VIEW OF THE DOMINION BANK

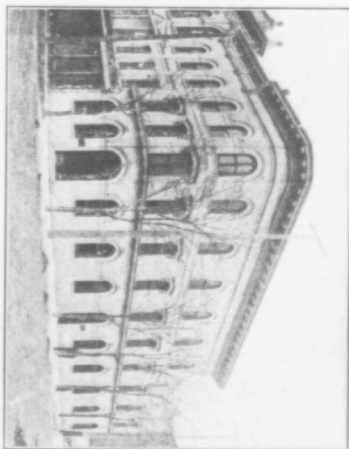




THE CANADIAN BANK OF COMMERCE BUILDING W. H. DUNSFORD, Manager



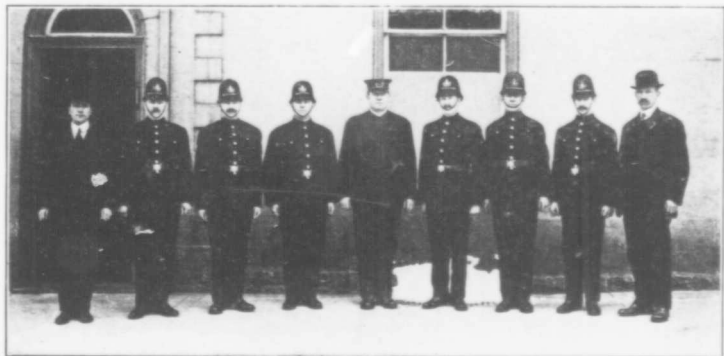
INTERIOR VIEW



BANK OF MONTREAL W. R. TRAVERS, Mgr.



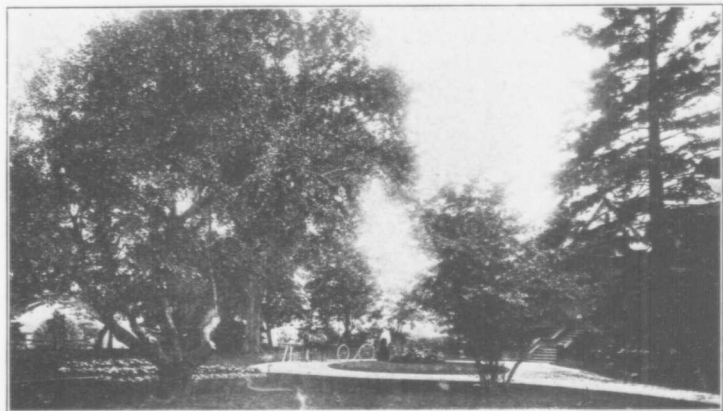
CENTRAL FIRE STATION  
W. A. HOWARD, Chief



CITY POLICE FORCE  
D. THOMPSON, Chief



HON. J. R. STRATTON'S RESIDENCE



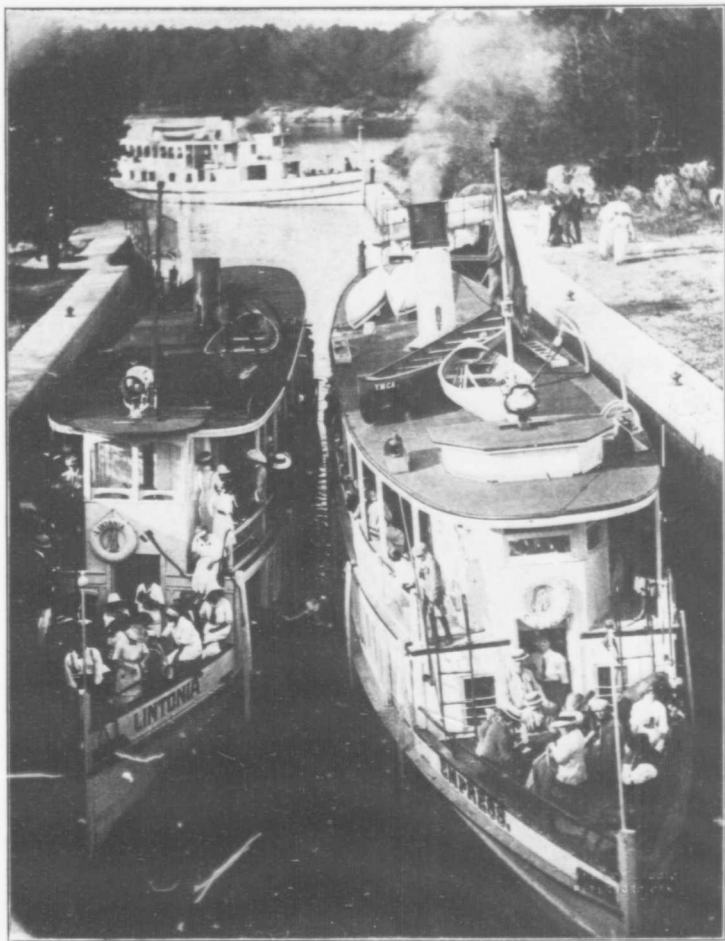
RESIDENCE AND GROUNDS OF G. WALTER GREEN



RESIDENCE OF W. H. BRADBURN



RESIDENCE OF W. G. MORROW



BURLEIGH FALLS LOCK, KAWARTHA LAKES, NEAR PETERBOROUGH



KAWARTHA LAKES, NEAR PETERBOROUGH

JUNIPER ISLAND AND STORE



HUNTING SCENE: KETCHECUM HUNT CLUB

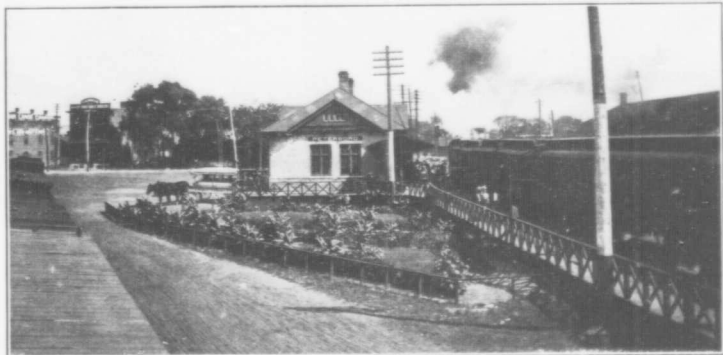


A PETERBOROUGH FISHING PARTY



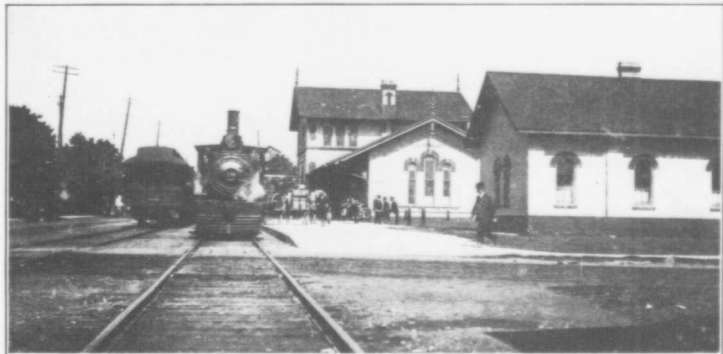
REGATTA DAY ON STONEY LAKE





CANADIAN PACIFIC RAILWAY STATION AT PETERBOROUGH

[ 09 ]



GRAND TRUNK RAILWAY STATION AT PETERBOROUGH