

**CIHM  
Microfiche  
Series  
(Monographs)**

**ICMH  
Collection de  
microfiches  
(monographies)**



**Canadian Institute for Historical Microreproductions / Institut canadien de microreproductions historiques**

**© 1996**

## Technical and Bibliographic Notes / Notes techniques et bibliographiques

The Institute has attempted to obtain the best original copy available for filming. Features of this copy which may be bibliographically unique, which may alter any of the images in the reproduction, or which may significantly change the usual method of filming are checked below.

- ☒ Coloured covers / Couverture de couleur
- ☐ Covers damaged / Couverture endommagée
- ☐ Covers restored and/or laminated / Couverture restaurée et/ou pelliculée
- ☐ Cover title missing / Le titre de couverture manque
- ☐ Coloured maps / Cartes géographiques en couleur
- ☒ Coloured ink (i.e. other than blue or black) / Encre de couleur (i.e. autre que bleue ou noire)
- ☒ Coloured plates and/or illustrations / Planches et/ou illustrations en couleur
- ☐ Bound with other material / Relié avec d'autres documents
- ☐ Only edition available / Seule édition disponible
- ☐ Tight binding may cause shadows or distortion along interior margin / La reliure serrée peut causer de l'ombre ou de la distorsion le long de la marge intérieure.
- ☐ Blank leaves added during restorations may appear within the text. Whenever possible, these have been omitted from filming / Il se peut que certaines pages blanches ajoutées lors d'une restauration apparaissent dans le texte, mais, lorsque cela était possible, ces pages n'ont pas été filmées.
- ☐ Additional comments / Commentaires supplémentaires:

L'Institut a microfilmé le meilleur exemplaire qu'il lui a été possible de se procurer. Les détails de cet exemplaire qui sont peut-être uniques du point de vue bibliographique, qui peuvent modifier une image reproduite, ou qui peuvent exiger une modification dans la méthode normale de filmage sont indiqués ci-dessous.

- ☐ Coloured pages / Pages de couleur
- ☐ Pages damaged / Pages endommagées
- ☐ Pages restored and/or laminated / Pages restaurées et/ou pelliculées
- ☒ Pages discoloured, stained or foxed / Pages décolorées, tachetées ou piquées
- ☐ Pages detached / Pages détachées
- ☒ Showthrough / Transparence
- ☐ Quality of print varies / Qualité inégale de l'impression
- ☐ Includes supplementary material / Comprend du matériel supplémentaire
- ☐ Pages wholly or partially obscured by errata slips, tissues, etc., have been refilmed to ensure the best possible image / Les pages totalement ou partiellement obscurcies par un feuillet d'errata, une pelure, etc., ont été filmées à nouveau de façon à obtenir la meilleure image possible.
- ☐ Opposing pages with varying colouration or discolourations are filmed twice to ensure the best possible image / Les pages s'opposant ayant des colorations variables ou des décolorations sont filmées deux fois afin d'obtenir la meilleure image possible.

**This item is filmed at the reduction ratio checked below /  
Ce document est filmé au taux de réduction indiqué ci-dessous.**

A horizontal number line with 16 boxes. Above the line, labels are placed at 10x, 14x, 18x, 22x, 26x, and 30x. Below the line, labels are placed at 12x, 16x, 20x, 24x, 28x, and 32x. A checkmark is placed in the box corresponding to the label 16x.

The copy filmed here has been reproduced thanks to the generosity of:

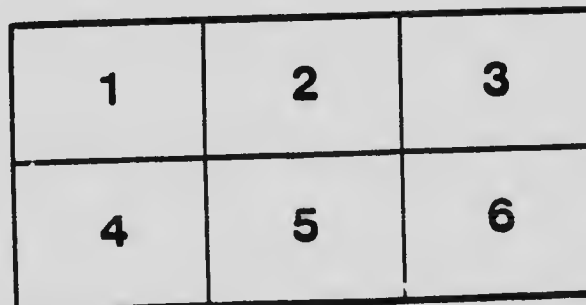
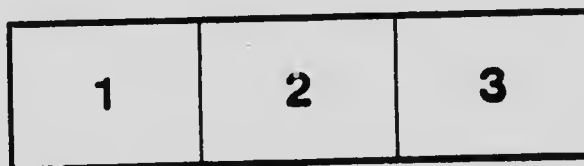
National Library of Canada

The images appearing here are the best quality possible considering the condition and legibility of the original copy and in keeping with the filming contract specifications.

Original copies in printed paper covers are filmed beginning with the front cover and ending on the last page with a printed or illustrated impression, or the back cover when appropriate. All other original copies are filmed beginning on the first page with a printed or illustrated impression, and ending on the last page with a printed or illustrated impression.

The last recorded frame on each microfiche shall contain the symbol  $\longrightarrow$  (meaning "CONTINUED"), or the symbol  $\nabla$  (meaning "END"), whichever applies.

Maps, plates, charts, etc., may be filmed at different reduction ratios. Those too large to be entirely included in one exposure are filmed beginning in the upper left hand corner, left to right and top to bottom, as many frames as required. The following diagrams illustrate the method:



L'exemplaire filmé fut reproduit grâce à la générosité de:

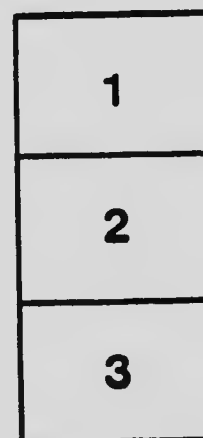
Bibliothèque nationale du Canada

Les images suivantes ont été reproduites avec le plus grand soin, compte tenu de la condition et de la netteté de l'exemplaire filmé, et en conformité avec les conditions du contrat de filmage.

Les exemplaires originaux dont la couverture en papier est imprimée sont filmés en commençant par le premier plat et en terminant soit par la dernière page qui comporte une empreinte d'impression ou d'illustration, soit par le second plat, selon le cas. Tous les autres exemplaires originaux sont filmés en commençant par la première page qui comporte une empreinte d'impression ou d'illustration et en terminant par la dernière page qui comporte une telle empreinte.

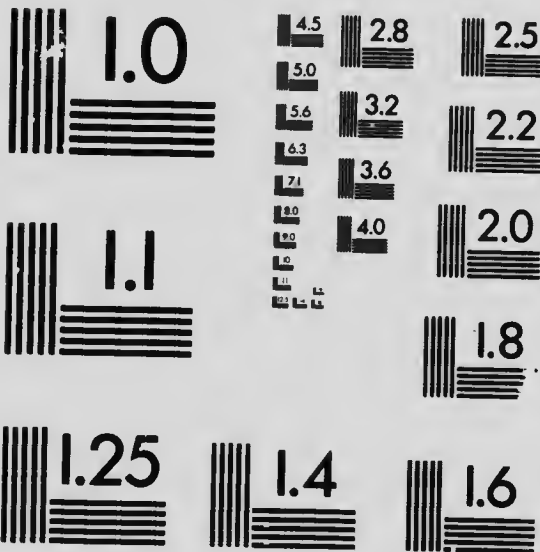
Un des symboles suivants apparaîtra sur la dernière image de chaque microfiche, selon le cas: le symbole  $\longrightarrow$  signifie "A SUIVRE", le symbole  $\nabla$  signifie "FIN".

Les cartes, planches, tableaux, etc., peuvent être filmés à des taux de réduction différents. Lorsque le document est trop grand pour être reproduit en un seul cliché, il est filmé à partir de l'angle supérieur gauche, de gauche à droite, et de haut en bas, en prenant le nombre d'images nécessaire. Les diagrammes suivants illustrent la méthode.



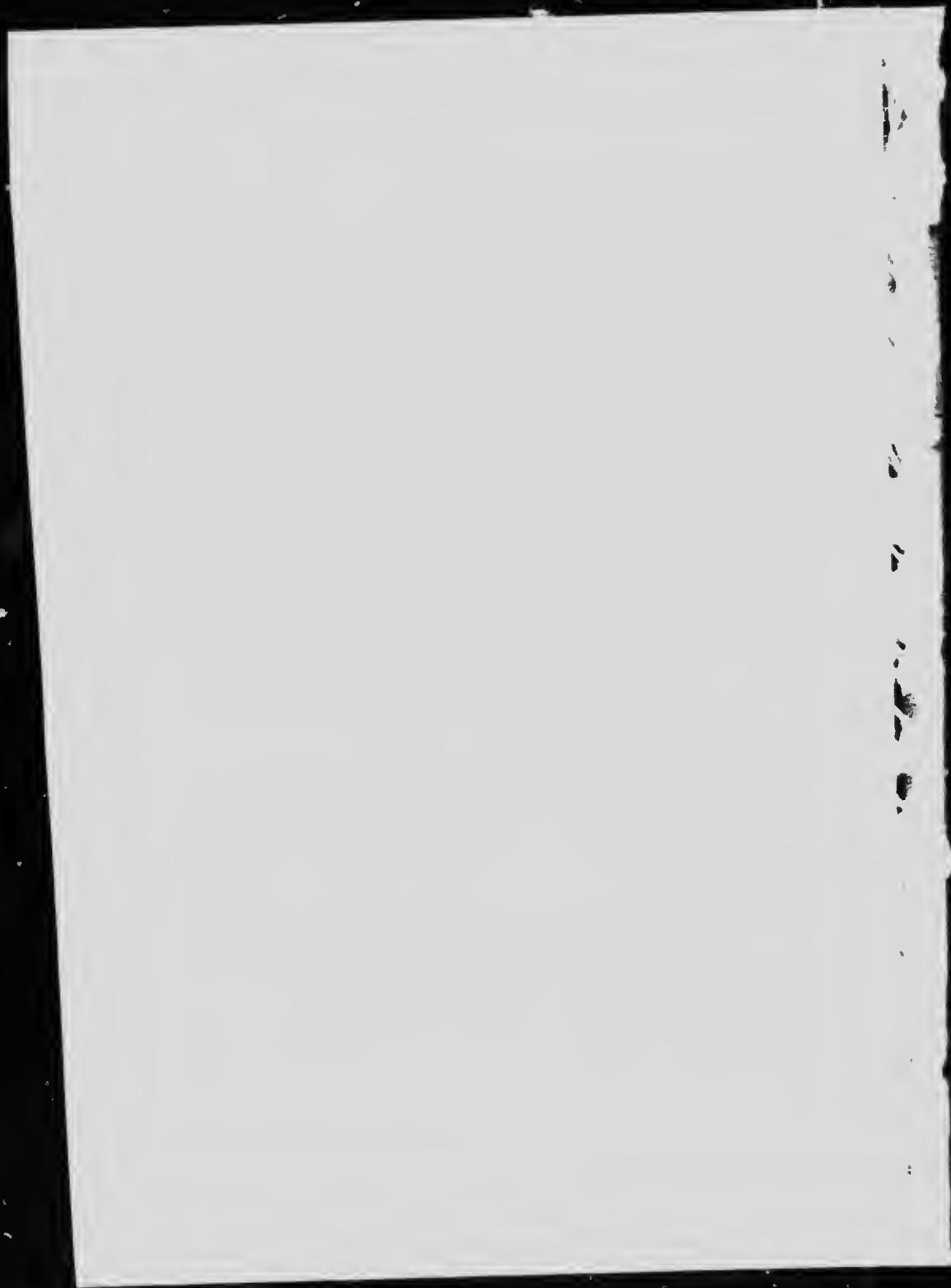
# MICROCOPY RESOLUTION TEST CHART

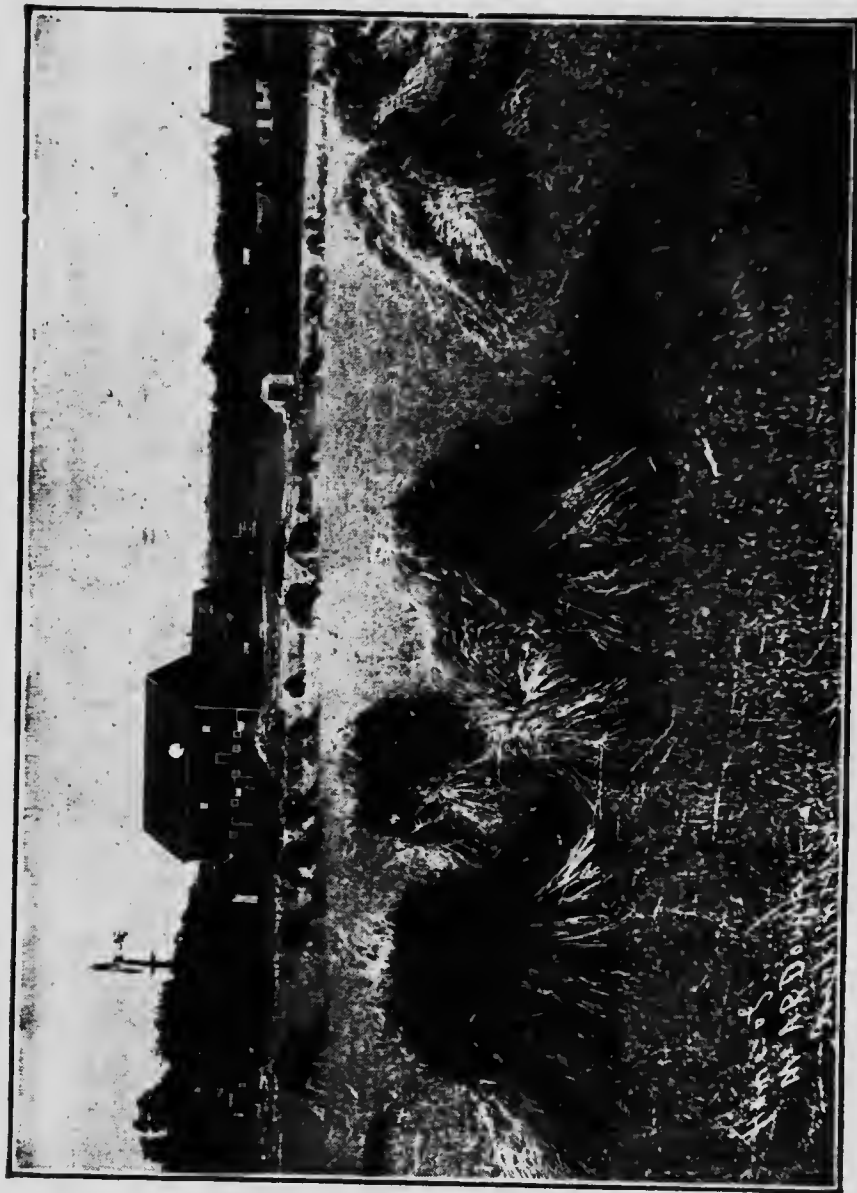
(ANSI and ISO TEST CHART No. 2)



APPLIED IMAGE Inc

1653 East Main Street  
Rochester, New York 14609 USA  
(716) 482 - 0300 - Phone  
(716) 288 - 5989 - Fax





A typical Farm in Manitoba.

5289  
1310

# Opportunities in Manitoba

1919

Containing Extracts from  
Heaton's Handbooks of Canadian Resources  
(See next page)



**The Canadian Provincial Booklets**  
(For free copies see over)

*Printed in Canada*

# Heaton's Provincial Booklets

*are published and revised to date for the Canadian Provincial Governments. Together they form the only uniform series of publications covering each Province in Canada.*

## APPLY FOR FREE COPIES

to the Agents of the Provinces in London or to the Minister of Agriculture of each Province as follows:

*Heaton's Alberta Booklet..... at Edmonton, Alta.  
" Brit. Columbia Booklet " Victoria, B.C.  
" New Brunswick Booklet " Fredericton, N.B.  
" Nova Scotia Booklet.... " Halifax, N.S.  
" Ontario Booklet..... " Toronto, Ont.  
" Pr. Ed. Island Booklet " Charlottetown, P.E.I.  
" Quebec Booklet..... " Quebec, Que.  
" Saskatchewan Booklet.. " Regina, Sask.*

For **Heaton's Manitoba Booklet** write to the  
Immigration and Colonization Branch  
439 Main St., Winnipeg, Man.

## Heaton's Handbooks of Canadian Resources

Price of each part 50 cents

**PART I.—Natural Resources.** A complete summary of the Natural Resources of Canada covering agriculture, fisheries, forest products, fur trade, mining, water powers, with references to Government publications which contain complete detailed information.

**PART II.—Descriptions of Towns and Local Industrial Opportunities** with specially prepared commercial maps of each Province.

**PART III.—Colonization.** Crown Land Regulations and detailed descriptions of every County and agricultural district in every Province with 11 specially prepared maps.

**Heaton's Agency, Toronto, Canada**

Copyright by Ernest Heaton, Toronto, 1919

891043



# Opportunities in Manitoba

## General Information

**AREA AND PHYSICAL FEATURES.—AREA.** Total area of Manitoba to-day is 251,832 sq. miles. In 1812 the province was extended north-west to the 60th parallel, and eastward to a line drawn from the north-east angle of the original boundaries of the province to the most north-easterly portion of Island Lake, thence north-east to intersect the southern shores of Hudson Bay in longitude 89 degrees. This district is 178,000 sq. miles, i.e., over 104,000 sq. miles larger than the old province of Manitoba. The province is now larger than Germany, Holland and Belgium combined.

**Area Cultivable.** The province, exclusive of the northern area added in 1912, has over 30 million acres of land that can be cultivated to advantage, about 9 million of which is under cultivation. Total acreage under grain was 5,821,864 acres and total grain crop 160,232,487 bushels in 1911. In 1918 total acreage was 9,328,852 acres and total agricultural production was valued at \$279,781,500.

**Lakes.** The larger lakes in the province in order of magnitude are: Winnipeg, part, 3,536,000 acres; Manitoba, 1,163,000; Winnipegosis, part, 836,000; Dauphin, 128,000; St. Martin, 80,000; Shoal, 65,000; Swan, 54,000; Water-hen, 53,000; Dog, 41,000; Lake of the Woods, part, 38,200; Ebb and Flow, 25,000 acres.

**Mountains.** The mountain elevations are the Porcupine, the Duck and the Riding Ridges in the west; the Turtle and the Tiger Hills in the south. The highest point in Manitoba is in the Porcupine Mountains, 2,500 feet.

**Northern Manitoba.** The district added to Manitoba in 1912 contains Port Nelson, the ocean terminus of the Hudson Bay Railway, which is nearing completion. It is practically unexplored, but is known to contain large areas of good farming land where grain and vegetables do well, and which should provide large tracts of pasture. It also has much merchantable timber, pulp wood, rich fisheries, and an abundance of fur-bearing animals. Valuable discoveries of gold and copper are being developed.

## GENERAL INFORMATION

**Rivers.** The rivers all run from the eastern and western sides of the province to the lower levels in the middle, draining into Hudson Bay. The principal rivers are: Red, Assiniboine, Winnipeg, Pembina, all having several tributaries.

**CLIMATE.** Climate conditions are uniform throughout the province. There is much sunshine. Summers are warm. Winter starts suddenly in November or December. The cold is steady, with a clear, dry atmosphere. Snow on the prairie averages 1 ft. deep. Chief rainfall is in June and July.

**Temperature and Rainfall.** According to the table compiled for Heaton's Annual by the Meteorological Office at Toronto, the mean annual temperature and average annual precipitation at different points is as follows:

	Temperature	Rainfall
Brandon.....	33.5	15
Channel Island.....	30.9	17
Dauphin.....	34.6	17
Elkhorn.....	34.6	17
Hillview.....	31.1	20
Minnedosa.....	34.1	17
Morden.....	36.9	19
Portage la Prairie.....	35.2	17
Sourisford.....	33.0	14
St. Albans.....	31.4	17
Treherne.....	34.9	17
Winnipeg.....	38.8	22

**EDUCATION.—PUBLIC SCHOOLS.** A school district may be formed as soon as there are ten children of school age in a section. The government grant to public schools consists of 75c. per day for 200 days' operation each year, and the municipal grant is \$1.20 per day for the same period. In 1917 the attendance at the public schools was 106,588.

**Consolidated Public Schools.** About 10% of the rural territory in the Province has been consolidated, and the children are conveyed to the schools from their homes in this area. Greater efficiency is secured by this method.

**School Gardens, Fairs, Etc.** 50% of the Schools have gardens. Over 100 school fairs are held annually when boys and girls compete in tests in agriculture and economic subjects, including practical woodworking, growing fodder, corn and potatoes, raising pigs and poultry, bread making, sewing, preserving, weed naming, etc.

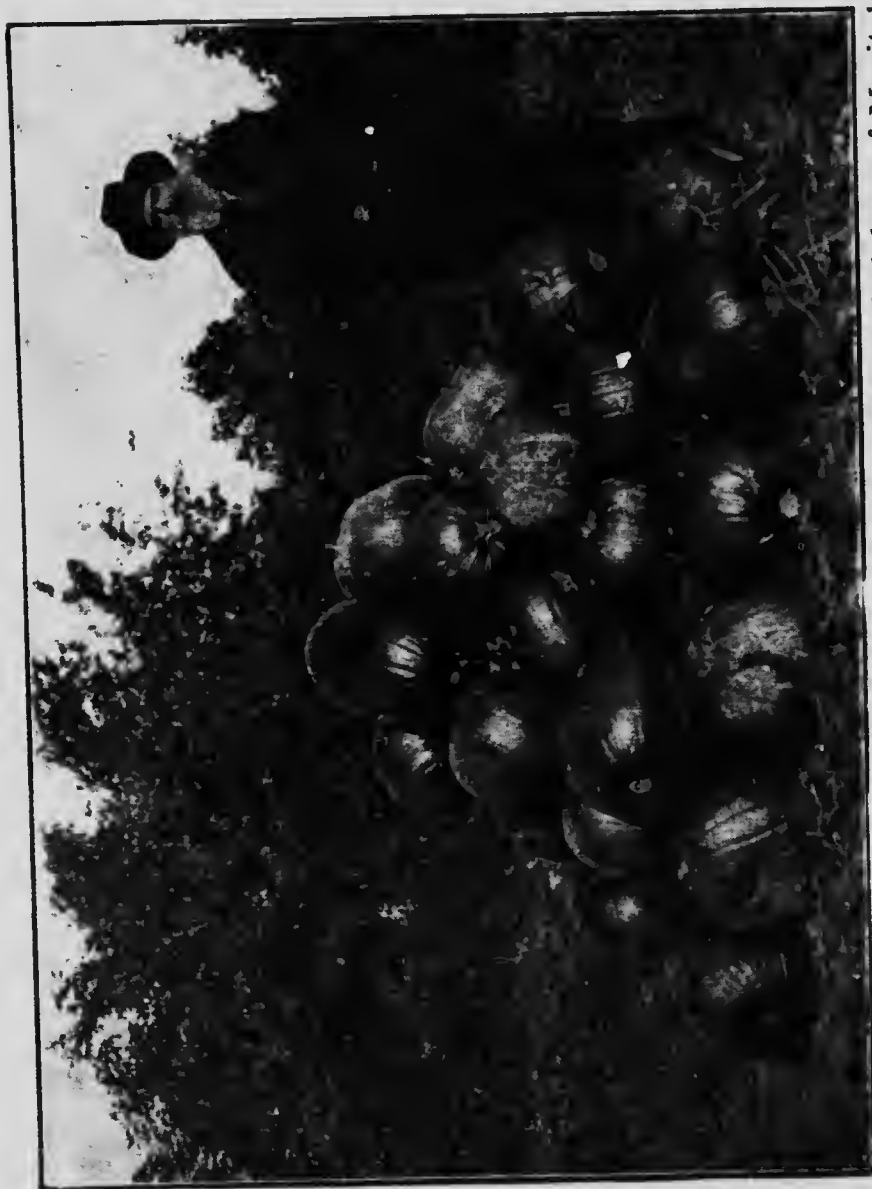
**Higher Education.** There are in the province 9 collegiate institutes, 4 collegiate departments, 23 high schools, 67 intermediate schools.

**University and Colleges.** The University of Manitoba established by Act of Parliament in 1877, is located at Winnipeg. The University confers degrees in arts, science, engineering, architecture, medicine, law and agriculture. Instruction is also given in pharmacy and a commercial course. Affiliated with the University are St. Boniface College (Roman Catholic) at St. Boniface, St. John's College (Anglican), Manitoba College (Presbyterian), Wesley College (Methodist), Manitoba Medical College, Manitoba Law School and Manitoba Agricultural College—all in Winnipeg.

**Agricultural Education.** For the teaching of Agriculture and Home Economics, the Province of Manitoba has provided buildings and equipment not surpassed anywhere on the continent. The regular courses are given in the winter when the young men and young women can get away from the farm. A student may take a one-year course, a two-year course, or a five-year course. The University of Manitoba confers the degree of Bachelor of Science in Agriculture on young men who have completed the five-year course in Agriculture, and the degree in Home Economics on young women who have completed the five courses in Household Science. The great majority of the students, however, enter for a two-year course and receive the College Diploma. The winter session opens about the middle of October and ends on March 31st. The fees for one winter at the College are \$30.00, board and room in College residence, \$5.00 per week. Any student over 16 years of age may enter, if he can read and write, and understands the English language. Special classes are provided for those who are not able to take a full year's work. During the summer the College puts on short courses for those who are not able to get away at that season. The College staff, too, assists in extension work throughout the province. The Manitoba Agricultural College Calendar will give full particulars of the courses offered, and time of opening.

**AGRICULTURAL TRAINS.** In connection with the Manitoba Agricultural College the province has established a system of agricultural trains, equipped with a special staff of instructors and lecturers, which are run over practically every line in the province.

**FISHERIES.** The total value of Manitoba fisheries in year ending March, 1917, was \$1,390,002. To this total Lake Winnipeg and Lake Winnipegosis were the chief contributors. The catch included whitefish, \$350,453; pickerel, \$311,262; tulibee, \$245,925; besides pike, perch, trout, bass, catfish, goldeyes, etc. Fish caught



Practically every kind of Vegetable does exceedingly well in the black loam of Manitoba.

through the ice are instantly frozen to death and teamed by traction engines and dog teams from the northern lakes to the railways. The catch is shipped in large quantities to the United States. In New Manitoba the lakes and rivers will yield a big harvest of fish when the country is opened up.

**GOLDEYES.** A true fresh water herring, found in the waters of Manitoba, is a delicious table fish, very popular in Winnipeg, fresh or smoked.

**Hudson Bay Fisheries.** Whitefish and the ordinary river trout have sea-going habits and are caught along the shore in nets. The Arctic salmon is very abundant in some places, but is not found west of the rivers flowing into Ungava Bay. Cod appear to have the same limit. At Fort Churchill white whales are caught in huge nets. The blubber is fed to the dogs. Pike, doré, goldeyes, whitefish and suckers are caught in the lake expansions.

**FORESTS.** West of the Red River in Southern Manitoba there are several hill districts that still have a quantity of standing timber. These have been set aside as Dominion Government forest reserves, and are known as Turtle Mountain Reserve, 69,920 acres; Spruce Woods Reserve, 143,680 acres; Porcupine Reserve, 759,040 acres; Duck Mountain Reserve, 987,680 acres. These tracts of land rise from 300 to 1,000 ft. above the plains. On the upper plateau are spruce, jackpine and tamarack; in the lower plateau, poplar and white birch; and in the coulees, elm, oak, ash and poplar. In Southern Manitoba, in the river valleys, are a few elm, oak, basswood and white pine.

**Principal Trees.** The principal trees in order of present importance are: White spruce, black spruce, jackpine, tamarack, balsam fir, aspen or white poplar, cedar, burr oak, paper or white birch, white elm, green ash, white oak, balsam, poplar or balm of Gilead (locally known as black poplar), black ash, basswood, Manitoba maple, cottonwood, red ash, mountain maple. Very few of these trees are of present commercial importance. Most of them are potentially important commercially, and all of them are of more or less value locally. Manitoba contains about 1,920,000 of saw timber, or 4 billion ft. B.M.

**FREIGHT RATES** The following table shows the freight rates per 100 lbs. on wheat to Port Arthur from points in Manitoba and from points in the Western Provinces, with the equivalent per acre on a crop of 20 bushels:

## GENERAL INFORMATION

Winnipeg, Man.—14c.....	\$1.68 per acre
Boissevain, Man.—17½c.....	2.10 per acre
Brandon, Man.—17½c.....	2.10 per acre
Edmonton, Alta.—30c.....	3.60 per acre
Lethbridge, Alta.—29c.....	3.48 per acre
Battleford, Sask.—29c.....	3.48 per acre

The following figures show the freight rates per 100 lbs. on live stock between Western Provinces and Manitoba to Winnipeg Market: Edmonton, Alta., 47c., and Virden Man., 24c., difference 23c., or on an animal of 1,400 weight, \$3.24; Lethbridge, Alta., 51c., and Deloraine, Man., 24½c., difference \$2.57; Calgary, Alta., 51c., and Melita, Man., 24c., difference of, on an animal of 1,400 weight, \$3.78.

**GOVERNMENT.** Manitoba is divided into 49 provincial constituencies. The nominal life of the legislature is five years. In 1918 there were 163 organized municipalities in the province, including cities and towns. A considerable portion of the province in the north and east is as yet without municipal organization, but there is school organization wherever there is sufficient settlement. Under redistribution, following the dissolution of the Dominion Parliament in 1917, Manitoba has fifteen members in the Dominion Parliament.

**IMMIGRANTS.** Are advised to call at the Immigration and Colonization office of the Manitoba Government, at 489 Main St., Winnipeg, for advice as to location and quality of land. Maps and information concerning free homesteads in Manitoba will be furnished on request.

**Homestead Regulations.** The land is surveyed into townships 6 miles square, divided into 36 sections of 640 acres each. Sections 11 and 29 are reserved for school purposes; sections 8 and 26 belong to the Hudson Bay Co. Other sections are available for homesteading. Any person who is sole head of a family, or any male over 18 years old, who is a British subject, or declares his intention to become a British subject, or a widow with minor children of her own dependent on her for support, may, on paying \$10, obtain entry for a quarter section (160 acres more or less) of Dominion Lands in Manitoba. Applicant must appear in person at the Dominion Lands Agency or sub-agency for the district. Entry by proxy may be made at any agency for a husband, father, mother, son, daughter, brother or sister, if eligible, and when duly authorized by the prescribed form. Duties: erection of a habitable house, 6 months' residence and cultivation of land in each of 3 years. A homesteader may live within 9 miles of his homestead on a farm of at least 80 acres.

## GENERAL INFORMATION

9

solely owned and occupied by him or by his father, mother, son, daughter, brother or sister, or upon a homestead entered for and occupied by them within the prescribed distance. Before applying for patent, homesteader must break 30 acres and crop 20, part of work being done each year. If residing in vicinity, as stated above, he must break 50 acres and crop 30 acres.

**ENEMY SUBJECTS EXCLUDED.** By Order in-Council, dated 3rd November, 1917, it is provided that no application for an entry for a homestead shall be granted unless the person making an application was at the commencement of the European war and has since continued to be a British subject or a subject of a country which is an ally of His Majesty in the present war or a subject of a country which is now a neutral country and unless he establishes the same to the satisfaction of the Minister of the Interior. The provisions of this regulation shall not apply to any alien born person who has become naturalized as a British subject since the commencement of the European war and who has been appointed to, or has enlisted in or joined the Canadian Expeditionary Forces, and who is either a member of such forces or has been honorably discharged therefrom, or, in the case of an officer, has been permitted to resign or without fault on his part has had his services dispensed with.

**SUBSTITUTION OF STOCK FOR CULTIVATION.** The ownership of live stock may be substituted for cultivation in the case of any homestead, if a report from a Homestead Inspector shows that the quarter section does not contain arable land to the extent required to obtain patent under the regulations with respect to cultivation.

**HUDSON BAY ROUTE.** From various expert opinions, optimistic and the reverse, it may be concluded that the route is open for navigation from about the 15th July to about 15th Oct. The C.N.R. has built a line from Winnipeg to The Pas on the Saskatchewan River. From there the Dominion Government is building a line to Port Nelson, 424 miles. This route will effect an average saving of 970 miles on the distance from the Western wheat fields to the Atlantic seaboard. Work is being actively prosecuted on the harbor at Nelson. Write for pamphlets, "Hudson Bay Route," and "Northern Manitoba," to Natural Resources Intelligence Bu., Ottawa.

**MANUFACTURES.** According to 1912 returns of the Dominion Census office, the value of manufactures in Manitoba was \$12,927,439 in 1900, \$53,673,609 in 1910—an increase of 315.19 per cent. Manufactures in Winnipeg alone in 1916 were valued at \$52,000,000.



There are openings for manufacturers in many lines, particulars of which will be furnished on application to The Board of Trade, Winnipeg.

**MINING—Building Stone.** Limestone for building purposes is extensively quarried at Tyndall, and at Stonewall, Stony Mountain, Rockspur and Gunton, from 12 to 25 miles north of Winnipeg. This stone is also calcined for the manufacture of lime. Granite is quarried on east shore of Lake Winnipeg. Sandstone is quarried on the shores and islands of Lake Winnipeg and in the Turtle Mountain district, near Boissevain and Deloraine. A bluish and whitish anhydrite occurs near Gypsumville, in the North. Marble of high grade is found on Marble Island in Hudson Bay and at Churchill.

**Clay Products.** Good brick clays in unlimited quantity are obtainable from the shales of the Pierre series. Bricks are manufactured at 16 points, sand lime bricks at Winnipeg, Brandon and Beausejour. A semi-refractory shale occurs in Turtle Mountain, La Riviere and near Virden.

**Cement.** A natural cement is manufactured at Babcock, s.e. of Winnipeg. Cement materials are found east of Lake Winnipeg and near Arnold. Limestone is quarried at Steep Rock, near Lake Manitoba, by Canada Cement Co., for Portland cement.

**Coal.** Several seams of lignite or brown coal underlie the northern flank of Turtle Mt. in the south-western part of the province, work has been done at several points, but no active mining has been undertaken.

**Copper.** High grade and very extensive copper sulphide deposits have been discovered north of The Pas, at Schist Lake, and the district is on the eve of very great development. The Tonopah Mining Co. has mined copper Sulphide which has returned high profits after hauling by teams in to The Pas and transporting to Trail, B.C., for treatment. At Flin Flon Lake enormous deposits have been blocked out. Values of zinc and lead occur in this ore body. This country has recently been examined by some of the foremost mining engineers of America, who report it to show every evidence of exceeding richness.

**Gold.** Large sulphite ore bodies at Flin Flon Lake and Schist Lake contain good values in gold and the extent of the ore bodies are such that mining is to be undertaken on a very large scale. Many other prospects await only the opening up of transportation. On Herb Lake, about 95 miles from The Pas on the line of the Hudson Bay Railway, rich free milling gold has been



## GENERAL INFORMATION

11

located and there has already been considerable activity. One large mine was working in 1918, the machinery having been shipped in by the Mines Explorations Syndicate (McKeever Bros., New York). Very promising gold discoveries have also been made in the Rice Lake District on the east side of Lake Winnipeg, and in the Star Lake District, in the south-eastern corner of the province.

**Gypsum.** Large deposits of gypsum have been found in the townships lying north of Lake St. Martin. The deposits are worked by the Manitoba Gypsum Co., Ltd. The crude gypsum is shipped from the mines (Gypsumville) north of Lake Winnipeg, to the works at Winnipeg, whence the crushed gypsum is supplied to cement factories; the calcined product is manufactured into wall plaster, hollow tiles, etc.

**Iron.** Large deposits of iron ore have been determined in the Lake Winnipeg district and in the country east of that lake.

**Molybdenum.** Extensive deposits found in S.E. Manitoba in 1917 promise large results as development proceeds.

**Natural Gas** has been obtained from several borings in Southern Manitoba. Investigations are being carried on at Manitou.

**Peat.** A number of bogs have been examined and reported upon by the Dominion Government. Write to the Department of Mines, Ottawa.

**Salt.** Brine springs of varying strength are found at Salt Point, near the mouth of Bell River and on the Red Deer peninsula in the southern part of Winnipegosis Lake. Of late years no salt has been manufactured.

**Tungsten.** Has been found in S.E. Manitoba, near the Ontario boundary.

**Zinc and Lead.** Values of Zinc and Lead occur in the copper sulphide deposits at Schist Lake and at Flin Flon Lake, north of the Pas.

**POPULATION.** According to the Dominion census returns, the population of the province was: In 1881, 62,260; in 1891, 152,506; in 1901, 255,211; in 1911, 455,614; in 1916, 553,860. Between 1901 and 1911 the rural population increased 70,511; the urban, 129,892.

**RELIGIONS.** In 1911 there were in Manitoba 86,578 Anglicans, 13,792 Baptists, 2,997 Congregationalists, 31,042 Greek Church; 10,636 Jews, 32,730 Lutherans, 15,600 Mennonites, 65,897 Methodists, 103,621 Presbyterians, 73,994 Roman Catholics.



Wild Duck and Geese are plentiful in Manitoba.  
See Sport, page 13.

**NATIONALITIES.** In 1911 the chief nationalities represented were: British, 266,415; French, 30,944; German, 34,530; Austro-Hungarian, 39,665; Belgian, 2,453; Dutch, 2,853; Indian, 7,876; Italian, 16,277; Jewish, 10,741; Polish, 12,310; Russian, 7,761; Scandinavian, 16,419. Only 36 per cent. were native to the province.

**RAILWAY TRANSPORTATION.** Manitoba had 3,221 miles of railway in 1910, 4,467 miles in 1918. It is crossed by three transcontinental lines: the Canadian National Railway, C.P.R., and G.T.P. The Midland and the Manitoba Great Northern railways also serve the communities of the Province.

**SPORT.** The black bear is common in wooded parts, Coyotes are abundant generally. Virginia, or white deer are found across Northern Manitoba, weight about 300 lbs. Mule deer are only occasionally found in the province. average weight 275 lbs. Antelope, at one time common, are no longer found in Manitoba. Wapiti, or elk, found in the north-western and central portions of the province, are said to be more numerous now than at any time during the past fifty years. The full-grown buck weighs 600 lbs. and occasionally over 1,000 lbs. The woodland caribou is found in wooded districts in the north-easterly portion. It is intermediate in size between the elk and the white tail deer. Lynx and wild cat are found throughout the wooded parts. Foxes are abundant. Wolves are common. Beaver are increasing annually. The Canadian goose, the North or Brant goose and the Wavy or White goose are the most common breeds. Of duck, mallard, canvas-back, wid-geon, teal, blue bill, red head, merganser, and spoon bill are found in White Water Lake, White Mud Lake, Plum Lake, Maple Lake, Oak Lake, Lake Manitoba and Lake Winnipeg, as well as other waters. Prairie chicken are common. Partridge (wood grouse) are found in the wooded districts. About Hudson Bay and the North large herds of the barren ground caribou are met.

**TAXATION OF LAND.** Assessment of farm lands is on the value of the land only. Improvements of all kinds are exempt. The straight land tax payable to his municipality is the only tax to which a Manitoba farmer is subject.

**UNOCCUPIED LAND TAX, 1918,** provides for a tax on un-occupied lands of  $\frac{1}{2}$  of 1 per cent. of the assessed value, except in specified cases which are exempt. No land shall be taxed under this Act at a rate higher than 20 cents per acre.

**TELEPHONES.** The telephone system of the whole province, both urban and rural, including long distance

lines, has been owned and operated since 1908 by the province under a Telephone Commission responsible directly to the Government. An active policy of extension, particularly of rural lines, has been carried on. The last annual statement of the commission shows a total of 46,021 subscribers, of which 33,388 are local (including Winnipeg) and 12,733 are rural. The telephones in Winnipeg average 11.1 per 100 of population and in the rest of the province 8.2 per 100.

**WAGES.** **Agricultural Laborers**, under war conditions, received from \$60 to \$65 per month, with board in the summer months; \$30 to \$40 in winter. In harvest time skilled harvest men receive \$4.00 per day and for threshing \$5.00 per day, subject to deduction on account of wet weather. Few engage by the month during harvest time.

**General Laborers**, \$2.50 to \$3.50 a day without board. **Lumbermen**, in logging camps, \$30 to \$40 a month, with board.

**Mechanics.** At Winnipeg, as follows: Bricklayers and masons 70c. to 80c. per hour, with a 7 or 8 months' season; plasterers, 65c.; carpenters, 50c.; sheet metal workers, 55c.; tailors, coats, \$27 per week; pants and vests, \$8 to \$10 per week; compositors, minimum per week of 48 hours, in news offices, \$29.50; in job offices, \$25.

**Domestics.** Cook, general, \$15 to \$35 a month, with board and lodging.

**WATER POWERS.** Manitoba is well supplied with water powers. In the northern portion of the province, the Churchill, Nelson and Saskatchewan have enormous power resources. The Winnipeg River, in the south-eastern portion of the province, is one of the best power rivers on the continent and is within easy transmission distance of the city of Winnipeg.

**Developed Water Power:—**

Pinawa Channel, Winnipeg River, Winnipeg	h.p.
Electric Railway Plant.....	30,000
Point du Bois, Winnipeg River, Municipal plant of city of Winnipeg.....	45,000
Little Saskatchewan River Brandon Electric Light Co.....	500
Little Saskatchewan River, Minnedosa Power Co.....	500

**Municipalities.** The municipalities in Manitoba furnished with electric energy from hydro power plants are: Brandon, Minnedosa, Selkirk, Winnipeg.

**Undeveloped Powers:—**

ON THE WINNIPEG RIVER the following undeveloped power sites have been investigated by the Dominion Water Power Branch of the Department of the Interior, Ottawa, all excellent commercial prospects and all within 75 miles of Winnipeg. (See Water Resources Paper No. 3, Dominion Water Power Branch.)

Pine Falls site.....	h.p.
Du Bonnet Falls site.....	63,100
McArthur Falls site.....	95,500
Lower Seven Sisters site.....	30,700
Upper Seven Sisters site.....	37,900
Upper Pinawa site.....	29,600
Slave Falls site.....	12,300
	44,400

ON THE SASKATCHEWAN RIVER at Grand Rapids, the following sites have been investigated:

Upper Grand Rapids.....	h.p.
Lower Grand Rapids.....	75,000
	45,000

ON THE NELSON RIVER there is an estimated undeveloped power of 2,500,000 h.p.

The Churchill River in the north, and the Manigotagan, Bloodvein, Pigeon, Berens, Poplar and other rivers in the south, all offer excellent power prospects when the market warrants development.

**License for Development.** Water power privileges are obtained through the Regulations of the Department of the Interior, Ottawa, governing the granting of water power rights in Manitoba, Saskatchewan, Alberta and the Northwest Territories. For further information communicate with the Superintendent, Dominion Water Power Branch, Ottawa.

## Agriculture

**MANITOBA'S FERTILE SOIL.** *Manitoba has a soil unequalled anywhere for fertility, and climatic conditions combine to make it pre-eminent not only in grain growing, but in mixed farming of all kinds, including the raising of live stock. Proof of the fertility of soil was evident at the International Dairy-Farm Products Exposition held at Peoria, Illinois, in September, 1917. Manitoba entries captured the Sweepstakes in wheat and rye, the first three prizes for hard red spring wheat, also first in wheat, oats, barley, rye, flax, beets, mangels, cauliflower, sugar beets, and garlic. See illustration of Cups won by Manitoba at the International Soil Products Exhibition at Kansas City, Mo. in October, 1918 on page 22.*

**BEEKEEPING.** Manitoba is fast becoming one of the leading beekeeping provinces of the Dominion, due to the plentiful growth of honey-producing flora, coupled with abundant sunshine, which allows the bees to gather freely. Honey crop reports for 1916 show an average of about 100 lbs. per colony; in some instances as much as 300 lbs. being gathered by one hive of bees. Bee diseases are now practically stamped out, which should do much to increase the production of honey. Bees are now being wintered out of doors successfully in Manitoba. Farmer and others are going in for beekeeping quite extensively and in many parts of the province large apiaries are to be found where many tons of honey are produced annually. The market for honey, at present, is good as Manitoba honey is very high in quality compared with that shipped in from outside points. The honey crop marketed in 1918 averaged 64 lbs. per hive, a total of 944,104 lbs., which sold at from 25c. to 35c. per lb. There are 921 apiarists.

**DAIRYING.** The dairy industry is expanding. Export is increasing very fast, as Manitoba butter is earning a fine reputation and is demanded in British Columbia, Western Ontario and Quebec. Total value of dairying products in 1918 was \$5,903,851.

**Butter.** In 1918 the output of creamery butter was 8,450,132 lbs.; value, \$3,802,559, average price per lb. 45c. Dairy butter, 9,703,337 lbs.; value, \$3,590,234, average price per lb., 37c. There are 92 creameries.

**Cheese.** In 1918 the output of 20 cheese factories was 973,612 lbs.; value, \$212,247, average price per lb., 21.8c.

**Milk and Cream.** In 1918 the output of milk was 147,787,400 lbs.; value, \$2,955,740; average price per lb., 2c. Sweet cream, 2,315,832 lbs.; value, \$1,227,390

average price per lb., 53c. There is a large winter importation of milk and sweet cream to Winnipeg from the United States.

**FLAX.** The larger yields and higher proportionate prices for wheat and coarse grains have militated against growing of flax in Manitoba, although flax does well in many districts. In 1912, when high prices prevailed, 196,315 acres was under crop to flax. As prices dropped this decreased until the abnormal demand and high prices for wheat and oats since the War caused many farmers to seed practically all their land to wheat and oats. In 1918 the acreage under flax was 106,635.

**Linseed.** In the Prairie provinces flax is at present grown for seed only, which is purchased by the Linseed Oil Mills in Canada and the United States. Owing to the failure of the crop in Russia and Holland, Ireland will take all the good fibre seed Canada can produce.

**Fibre Manufacture.** The fibre is too short and of too poor a quality to be worked with profit by the old process; but efforts are being made to find some profitable means of extracting the fibre from the waste material. It is claimed that by the Feuillette Retting process, Western flax can be economically treated and manufactured into coarse fibre. The Flax Fibre Development Association, Head Office at Regina, was organized in 1917 to manufacture from flax, without retting, sacking, towelling, binder twine, etc. Write Experimental Farm, Ottawa.

**FODDER CROPS.—Cultivated Grasses.** The rye grass is inferior to timothy, but gives 50% greater yield on the drier lands. Brome grass is suitable to the lighter rolling lands.

**Alfalfa.** It is only within recent years that Manitoba farmers have learned that alfalfa is one of the best and most satisfactory of crops in the province. It has proved exceptionally profitable in the first four years. Special attention is being given to the selection and breeding of varieties best adapted to Manitoba. Many farmers are making this crop one of their staple products. In 1918, 8,100 tons of alfalfa were obtained from 3,600 acres, an average of 1.5 tons. It winters well in all cultivated parts of the province. Apart from its value as a cured fodder, it forms a most desirable pasture.

**Corn.** In the U.S. the northern boundary of the corn belt is steadily moving northward. The Manitoba Agricultural College has tried to secure a corn that will produce fodder and ripe ear corn in Manitoba. "Quebec 18" variety has ripened seed and averaged 11 1/2 tons



Farmers' Grain Elevators and C.N.R. Wheat Train (80 cars) at Dauphin Station.  
See pages 14 and 57.



of fodder per acre. In 1918, 67,900 tons of fodder corn were grown on 12,340 acres.

**Clover.** Common red and alsike clover do well on well-prepared soil without a nurse crop. In 1918 the yield of hay and clover was 74,000 tons from 74,000 acres average 1 ton.

**FRUIT GROWING — Apples.** A. P. Stevenson, the pioneer of the industry, has over 40 varieties of apples near Morden. The most successful are the Repka Kaslava, a yellow sweet apple; the Blush Calvil, white with a delicate flush; the Charlemoff, red striped, medium early; Anisette, a red fall apple; The Hibernial, Austerhoff and Antinofka, winter apples. Apples have also been successfully grown at the foot of the Pembina Mountains and in the Red River Valley. There are over 50 orchards. It is necessary to have the proper soil, drainage and protection.

**Cherries.** The most successful proven varieties are hybrids of the Wild Sand Cherry, ripening in September. The Wild Sand Cherry bears heavy crops of black fruit of medium quality. The Lake Baikal Cherry, from Siberia, and the Japanese Cherry, are entirely hardy in Manitoba, but have not yet fruited.

**Plums.** Plums grow wild. A number of trees planted in the Experimental Farm at Brandon are doing well. The fruit is small but of good flavor.

**Other Fruits.** Raspberries, black and white currants, are grown in many parts. Gooseberries, raspberries, black and red currants, blueberries, saskatoons and late strawberries ripening the last week in July, grow wild as far north as Cross Lake. Immense crops of high and low bush cranberries are found on the Saskatchewan River.

**GRAIN CROPS, 1918.** The yield of the principal grain crops of Manitoba for 1918, estimated from thrashers returns as supplied by the Dominion Bureau of Statistics was as follows:

Field Crops	Acres Sown	Bushels per Acre	Bushels Total Yield	Total Value.
Fall Wheat. . . . .	2,734	18.00	49,000	101,000
Spring Wheat. . . . .	2,980,968	16.25	48,142,100	99,173,000
All Wheat. . . . .	2,983,702	16.15	48,191,100	99,274,000
Oats. . . . .	1,714,894	31.75	54,473,500	38,676,000
Barley. . . . .	1,102,965	25.25	27,963,400	24,887,000
Rye. . . . .	240,469	16.25	3,935,700	5,549,000
Flax. . . . .	107,961	9.75	1,091,000	3,437,000
Mixed Grains. . . . .	30,309	28.25	856,000	882,000

**LIVE STOCK.**—The U.S. Food Controller says the dairy product of Europe is 30% and of the Allies 5% below pre-war normal. Official figures show that the dairy herds of Denmark, Great Britain, Belgium and Serbia have decreased 3½ million head. Europe must restock her herds chiefly from this Continent.

**Cattle.** There is an increasing demand for stockers. An immense crop of coarse grains and fodder is easily raised. With a greater supply of help greater attention will be paid to feeding fat cattle. The Manitoba Cattle Breeders' Association holds an annual sale of pure-bred cattle at Brandon. In 1914 there were 498,040 cattle in the province, and by June, 1918, the number had increased to 746,899.

**CHAMPION STEERS.** Glencarnock, the big Angus steer, declared the Champion of the 1912 International Live Stock Exposition at Chicago, was reared by J. D. McGregor, of Brandon, Man., weight 1,630 lbs. This steer was sold for 50c. per lb. on the hoof. At the 1913 International Live Stock Exhibition Manitoba again captured first honors with Glencarnock Victor II, also reared by Mr. McGregor. At the Dominion Fair, at Brandon, 1913, Manitoba took 1st prize and gold medal for the best 10 beef cattle exhibited by any province.

**Horses.** The Clydesdale breed predominates. There are many Percherons, Shires and Standard bred horses. Many horses are imported from Ontario. In 1901 there were 163,867 horses in the province; in 1918, 384,772. Present prices rule high. A good pair of Clydesdales will bring \$600. The province has a stringent stallion enrolment law. There is a ready demand in Saskatchewan and British Columbia for surplus commercial horses.

**Sheep.** The Winnipeg market is supplied chiefly from the Western ranches and New Brunswick. Shropshires and Leicesters are the popular breeds. Fencing costs 20c. per rod. Total sheep in province: 136,782 in 1918.

**WOOL.** In 1918, the Manitoba Department of Agriculture took charge of the assembling of wool at Winnipeg, where it was graded and forwarded in bulk lots to be sold by the Canadian Co-operative Growers, Ltd., a Co-operative Co. of wool growers, the purchase money being distributed by the Department. The average price of medium clothing wool was 65c.; of fine clothing wool 60¼c. 361,585 lbs. were sold worth over \$200,000.

**Swine.** With the development of mixed farming, more hogs are being raised. In 1918 the number of hogs in the province was estimated at 284,596. The most common breeds are Berks, Yorkshires and Tamworths.

**POULTRY** In 1918 farmers disposed of 95,448 turkeys, 46,964 geese, 722,864 chickens, and 68,380 ducks. Imports of eggs from Ontario and Minnesota are large. Some turkeys and chickens are imported from Ontario. **Chickens.** Plymouth Rocks, Wyandottes, Rhode Island Reds and Orpingtons are best adapted to withstand the Western winter.

**Ducks and Geese.** The Pekin, Rouen and Indian Runner ducks do best. The Embden and Toulouse geese are the most common breeds.

**Turkeys.** The Mammoth Bronze is most commonly raised. Turkey raising has been developed to a greater extent than elsewhere in Canada.

**VEGETABLES AND ROOTS.** Practically every kind of vegetable does exceedingly well in the black loam of Manitoba, including cucumbers, squash, citrons, pumpkins and sweet corn. Root crops are not largely grown for feed.

**Tomatoes.** Tomatoes even ripen in Winnipeg, yet vast quantities are imported. Three pickle factories in Winnipeg have to send outside the province for over 25 per cent. of their garden stuff.

**Onions.** Onions yield 400 to 700 bushels per acre.

**Potatoes.** Potatoes often yield 200 to 400 bushels per acre. In 1918, 8,325,000 bushels of potatoes were grown from 45,000 acres, an average of 185 bushels to the acre. Value of crop \$4,662,000.

**Turnips.** Of turnips, etc., in 1918, 2,494,800 bushels were grown from 9,910 acres, an average of 251.75 bushels to the acre. Value of crop \$1,097,700.

**WHEAT** The ideal temperature for wheat is a mean summer temperature of 60 degrees. This extends as far as latitude 65 degrees. The greatest yield is nearest the northern limit of successful growth. Wheat from Fort Chippewegan at latitude 59 took first prize in Philadelphia in 1876. Wheat from the Peace River Valley took first prize in the World's Columbian Exhibition at Chicago in 1893. In the northern latitudes four and five grains are found to the cluster, as against two grains usual in the wheat fields of the United States. This is due to the winter frosts, summer rains and the soil, of which the chief ingredients are nitrogen, potash and phosphoric acid.

**Spring Wheat.** The leading varieties are Red Fife and Marquis, which grade hard and are known as Manitoba Hard Wheat. They fetch a higher price than any other varieties grown. The Marquis, a recent development,

matures about 15 days earlier than Red Fife. At Indian Head, Sask., a yield of  $81\frac{1}{2}$  bush. per acre was officially recorded in 1913. This variety won first prize for the best bushel of wheat grown in America, at New York, in 1911, and at Lethbridge in 1912. A new variety, known as Prelude Wheat, was introduced in Saskatchewan in 1913 with good results. It ripens about two weeks earlier than Marquis, and is ready for cutting before Aug. 21st, thus escaping the danger of early frosts. It is a short-growing wheat, producing very hard kernels, and seldom weighs less than 62 or 63 lbs. to the bushel.

**Winter Wheat.** Sown in August, it grows to 6 or 8 inches in fall, passes through winter without damage, and is ready for the reaper from the 1st to 15th of August. In some parts of Manitoba it is accounted a safe annual crop. The area found capable of growing this grain successfully is every year extending northward. The leading variety is Alberta Red, which was grown originally from Turkey Red Wheat introduced from Kansas.



Cups won by Manitoba in the International Soil Products Exhibition at Kansas City, Mo., in October, 1918.

## Rural Municipalities

The statistics in these descriptions have been taken from the latest Provincial Government statistical returns; the descriptive matter has been supplied by the official of the rural municipality in each case. For statistical purposes the Province is divided by the Government into crop districts known as the Eastern, North Central, South Central, North Western, and South Western. This division has been followed here.

### Eastern District

**ASSINIBOIA.** Area 26,853 acres, 4,556 acres cultivated. Extends 12 miles westerly from Winnipeg city limits and 4 miles north. Land is rolling; soil black loam 8 in., with clay subsoil. Watered by Assiniboia River at southern extremity. Served by Man. S.W. Ry., C.N.R., and G.T.P. Wells from 30 to 130 feet. Mixed farming. A large portion has been subdivided into building lots. Average price (not based on productive value) of improved farms \$200. Electric cars to Headingley village. Pop. 8,451, including English and English and French Canadians.

**BIFROST.** Area 529,040 acres, 16,156 acres cultivated. Situate on west side of Lake Winnipeg. Land is flat and marshy; about three-fifths covered with spruce, tamarack, birch and poplar. Stony ridges running north-west and south-east. Soil black loam, 3 to 12 inches on hard, greyish subsoil, stony in parts. Watered by Icelandic River and Lake Winnipeg in east. Served by C.P.R. Teulon branch, C.P.R. Gimli branch, and C.N.R. Rose Isle branch under construction. Government phone to Winnipeg. Local markets at Arborg and Icelandic River. Mixed farming. Wheat averages 2<sup>rd</sup> bush.; oats, 45; barley, 40; flax, 15. Pop. 5,576, including Icelanders, Ruthenians, Hungarians, and Canadians. About 1,000 homesteads available. Price of raw lands per acre, \$7 to \$20; improved, \$10 to \$30.

**BROKENHEAD.** Area 180,480 acres, 33,500 acres cultivated. Land is rolling and good along rivers and near Beausejour, elsewhere sandy or blue clay. Watered by Brokenhead River. Wells 20 to 75 ft. Markets at Winnipeg and Kenora, Ont. Served by C.P.R. main line. Elevator at Beausejour. Mixed farming and grain. Wheat crops of 35 bushels; oats, 80; barley, 45;



## EASTERN DISTRICT

25

flax 18, are common. Pop. 4,250, including Poles and Germans. No homesteads available. Price per acre of raw lands, \$15 to \$20; improved, \$35 to \$60.

**CHARLESWOOD.** Area 23,489 acres. 3,500 acres cultivated. Land is flat and dry, largely covered with poplar and scrub oak. Soil 6 in. black loam with clay subsoil. Assiniboine River runs through district parallel with main highway. Fine scenery. Wells average 100 ft. Served by G.R.R., C.N.R., C.P.R. and Winnipeg Elec. Ry. Mixed farming and market gardens. Leading products, grain and vegetables. Local market at Winnipeg and district. Pop. 436. British and French Canadian.

**DE SALABERRY.** Area comprises 160,280 acres, 55,045 acres cultivated. Land is flat and dry. Soil black loam, 2 feet deep, especially good land west of C.P.R. Watered by rivers. Wells 50 to 350 ft., good water east of C.P.R. Markets at Dufrost, Carey, Otterburne, St. Pierre and Winnipeg. Served by C.P.R. Mixed farming. Wheat averages 22 bushels; oats, 60; barley, 35; flax, 18. Pop. 2,221, including French Canadians, Americans and English. Price per acre of raw lands, \$20; improved, \$35 to \$40.

**FORT GARRY.** Area 17,198 acres, 4,599 acres cultivated. Land is flat. Soil black loam. River runs through municipality. Wells 50 ft. to 200 ft. Leading products, wheat, oats, vegetables. Served by C.N.R. and Winnipeg Elec. Ry. Local market in Winnipeg. Pop. 1796, French, Scotch and English.

**FRANKLIN.** Area 228,738 acres, 82,416 acres cultivated. Land is mostly rolling, with some scrub and poplar. Soil black loam, 8 to 12 in. deep, on clay subsoil. Watered by rivers and creeks. Wells 12 to 24 ft. A grain-growing district, well suited to mixed farming. Considerable amount of corn grown for fodder. Market at Winnipeg. Served by C.P.R. and C.N.R. Average crops per acre: wheat, 12 to 20 bush.; oats, 30 to 60; barley, 20 to 40; flax, 10 to 15. Pop. 2,901, including Canadians, Americans and Germans. No homesteads available. Average price per acre of raw lands, \$12 to \$20; improved farms, \$25 to \$45.

**GIMLI.** Area 79,340 acres, 2,717 acres cultivated. Land is rolling. Soil black loam, 6 to 10 in. deep, on white clay subsoil. Wells 20 to 100 ft. A mixed farming district. Cattle raising and dairying predominate. Grains and vegetables do well. Local market at Gimli. Winnipeg 50 miles distant. Served throughout by lines of C.P.R. and steamers on

Lake Winnipeg. Country is well wooded. Good scenery. Average crops per acre: Wheat, 25 bush.; oats, 65; barley, 30; Pop. 1,986, including Icelanders, Germans. Poles and Ruthenians. A few homesteads available. Average price per acre of raw lands, \$6 to \$10; improved farms \$10 to \$40

**HANOVER.** Area 183,065 acres, 38,648 acres cultivated. Land is flat; marshy at east corner, elsewhere dry. Soil in s.e. of 3 townships is sandy; of 2 tps. sandy loam; Tp. 7, R. 4, is good land. Wells from 10 to 150 ft. Served by C.P.R., Soo Line and C.N.R. Farming mixed, grain and dairying. Markets at Otterburne, Niverville and Giroux. Crops average: Wheat, 15 bush.; oats, 40; barley, 30; average price per acre \$4 to \$15; improved farms, \$8 to \$50. Pop. 4,210.

**KILDONAN, EAST AND WEST.** Area 16,143 acres; 2,132 acres cultivated. Adjoins Winnipeg. Within 5 miles of city market; reached by 4 good gravelled roads and electric ry. Very fertile soil. Chief products, market garden truck, dairying. Land for gardening can be rented at \$15 per acre up, sells at \$150 per acre up. Pop. 7,876.

**KREUZEBURG.** Area 201,600 acres, 7,450 acres cultivated. Land is flat and marshy in parts, generally wooded with poplar and spruce. Soil sandy loam and clay loam. Wells from 30 to 200 ft. in depth. Chiefly mixed farming, vegetables, cattle and poultry. Local markets at Komarino, Malonton, Kreuzeburg, Meletz, Rembrandt and at Winnipeg. About 2 townships available for homesteads. Transportation at present poor. The Hudson's Bay Co. has lands for sale. Pop. 3,923, including Ruthenians, Poles, Germans, English and Jews. Price of new lands \$5 to \$7 per acre.

**LA BROQUERIE.** Area 207,360 acres, 89,457 acres cultivated. Land is rolling and marshy between the hills. Soil sandy loam, about 12 in. subsoil, clay to the north, gravelly to south. Watered by wells 50 to 150 ft. Markets, Winnipeg in summer, lumber camps in winter. Served by C.N.R. Mixed farming. Wheat averages 15 bush.; oats, 45; barley, 40; flax, 8; roots, 150. Pop. 988, French and Germans. Hudson's Bay Co. and Western Trust Co. have lands for sale. Two townships available for homesteads. Price per acre of raw lands, \$8; improved, \$30.

**MONTCALM.**—Area 110,472 acres; 89,475 acres cultivated, a successful dairy district in the fertile Red River Valley. 40 miles S. of Winnipeg near U.S. boundary. Land is flat. Soil, black loam. Watered



## EASTERN DISTRICT

27

chiefly by Red River. Varying success with wells. Leading products, wheat, hogs, cattle and milk. Served by N.P.Ry, G.N.R. and C.N.R. Good roads and bridges. Local markets at Letellier, St. Jean Baptiste, St. Joseph, St. Elizabeth. Pop. 2,878, English, French, Canadian, Mennonites, Germans. Average price per acre: raw lands, \$25; improved farms, \$30 to \$40.

**MORRIS.** Area 245,651 acres, 139,536 acres cultivated. Land flat, soil 18 inches of black loam on clay subsoil; very rich, but requires the right weather: no stone, rock or scrub. Watered by Morris and Red Rivers. Wells average 70 ft. Average crops: Wheat, 15 bush.; oats, 70; barley, 40; flax, 12; roots, 400. Stock-raising and dairying. Served by C.P.R., G.N.R., C.N.R., N.P.R. Markets, local and at Winnipeg, 40 miles. Less than half of the district is under cultivation, one-third of the land being held by non-residents. Pop. 3,000 including English, Germans and French. Average price per acre: raw lands, \$20 to \$25; improved farms, \$25 to \$40.

**RITCHOT.** Area 81,365 acres, 52,000 acres cultivated. Land is flat. Soil black loam 2 to 3 ft. deep. Watered by Red River and numerous coulees. Wells average 60 feet. A mixed farming district. Within a few miles of the Winnipeg market. Served by C.P.R. and C.N.R. Pop. 2,185 chiefly French Canadians. No homesteads available. Average price per acre of land in southern part, \$50; nearer the city about \$100.

**ROCKWOOD.** Area 287,109 acres, 59,053 acres cultivated. Land is slightly rolling and dry. Soil generally black and clay loam, 1 to 5 ft.; clay subsoil, but varies greatly. Wells 20 to 60 ft. Winnipeg and local markets at Stonewall, Balmoral, Gunton, Teulon, Stony Mountain. Served by C.P.R., C.N.R., and Selkirk, Winnipeg and Lake Winnipeg Electric Ry., from Winnipeg to Stonewall. Grain growing and dairying. Wheat averages 22 bush.; oats, 50; barley, 70; flax, 15; potatoes, 300. Pop. 3,773. Price per acre of raw lands, \$10 to \$40; improved, \$20 to \$150. Some homesteads available.

**ROSSER.** Area 109,500 acres, 41,945 acres cultivated. Land is rolling. Soil black loam; clay subsoil. Watered by wells 45 to 90 ft. Market at Winnipeg. Served by C.P.R. and C.N.R. Mixed farming. Wheat averages 20 bush.; oats, 40; barley, 35; flax, 18; roots, 50. Pop. 2,439, of various nationalities. Price per acre of raw lands, \$25; improved, from \$50 up. No homesteads available.

**ST. ANDREWS.** Area 181,346 acres; 21,662 acres cultivated. Land is rolling, with scrub. Soil black loam

10 to 48 in.; clay subsoil. Watered by creeks and wells 16 to 36 ft. and Red River and Lake Winnipeg on eastern boundary. Served by C.P.R. Markets, Winnipeg and local. Grain and mixed farming. Wheat averages 31 bush.; oats, 90; barley, 56; flax, 18. Pop. 2,482, including Canadians, Icelanders, English, and Americans. No homesteads available. Average price per acre of raw lands, \$20; improved, \$35.

**ST. ANNE.** Area, 154,280 acres; 13,278 acres cultivated. Land is rolling. Soil sandy loam and dark loam. Watered by River Seine. Wells 30 to 200 ft. A mixed farming district. Oats average 60 bush per acre; barley, 25; flax, 10; roots, 200. Pop. 3,259, including French, English and Germans. About 200 homesteads available. Average price per acre of raw lands \$8 to \$25; improved farms \$30 to \$40.

**Givoux District.** Lies along C.N. Ry. 30-40 miles s.e. from Winnipeg, for some time overlooked, now counted as one of the best mixed farming districts in Manitoba, partly wooded, with clear sections.

**ST. CLEMENT'S.** Area 300,000 acres. 18,295 acres cultivated. Land is rolling, with thickets of small timber. Some low lands in northern part near mouth of Red River, of which about 10,000 acres are cut annually for hay. Soil deep black loam, 12 to 28 in. deep, on clay subsoil. Served by C.N.R. and C.P.R. Markets, Winnipeg, Selkirk, and local. A mixed farming district. Wheat yields 30 to 40 bu h.; oats, 75 to 100; barley, 50 to 70; flax, 15 to 20. Pop. 5,053. Mostly English speaking. Some Galicians. No homesteads available. Average price per acre of raw lands \$15 to \$20; improved farms, \$30 to \$60.

**ST. PAULS.** The Eastern Division has an area of 10,019 acres, 1,647 acres cultivated; St. Pauls West has 20,903 acres, 1,261 acres cultivated. Land is sloping and in some parts hilly. Well drained. Soil black loam 15 in. deep, on clay subsoil. Watered by Red River, flowing through centre of municipality. Good water at 40 to 100 ft. A mixed farming and market gardening district, producing oats, barley, vegetables and hay. Closely adjoining city of Winnipeg. Served by C.P.R., C.N.R. and Electric Ry. Markets at Winnipeg and Transcona. Average crops per acre: Wheat, 35 bush.; oats, 75 to 80; barley, 40 to 50; roots, 300 to 450. Pop. about 883, English speaking. No homesteads available. Average price per acre of raw lands, \$300 to \$350; improved farms along the Red River \$1,000 to \$1,500.

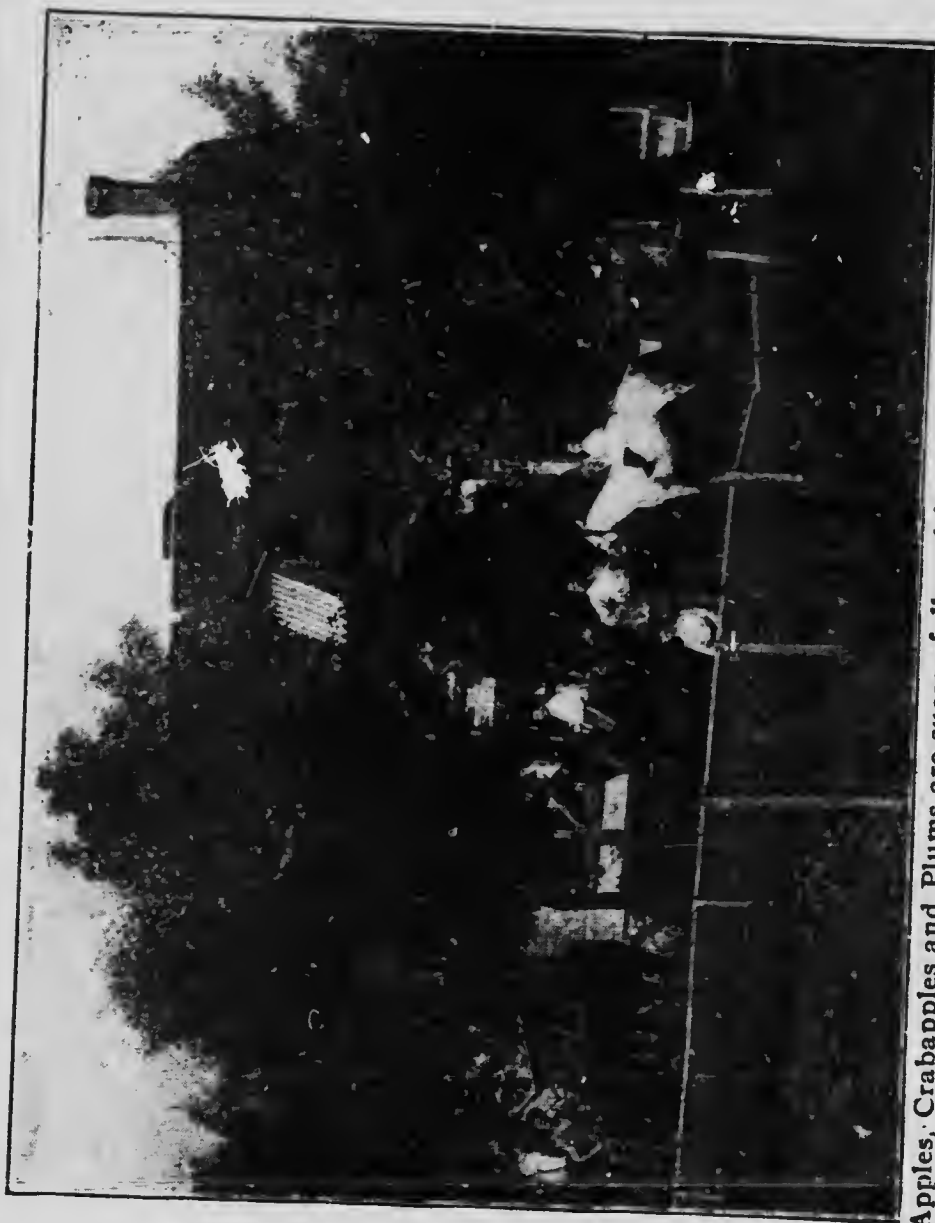
**SPRAGUE.** Area 552,960 acres, 5,611 acres cultivated. Land about half dry and rolling; balance marshy, with

fall for drainage. Soil part sandy loam; part clay loam 12 to 18 in., with clay subsoil. Flowing wells from 65 to 100 ft. Served by C.N.R. Mixed farming. Crops average. Wheat, 30 bush.; oats, 50; barley, 35; flax 18; roots 400. Pop. 2,056, including English, Americans, French, Scandinavians and Austrians. Homestead land available. C.N.R. Land Co. and Hudson's Bay Co. have lands for sale. Improved farm lands selling at \$10 per acre up. Local markets at Piney, Sprague, Vassar.

**SPRINGFIELD.** Area 390,346 acres 40,933 acres cultivated. Lands slightly rolling to the east from Winnipeg; w. part slightly rolling; e. part more rolling. Soil varies from deep black loam with clay subsoil to light sandy soil underlaid with gravel or marl. Brokenhead River and Cock Creek run through district affording outlets for drainage. Many open springs of pure water. Good water underlies whole country at from 40 ft. to 100 ft. Many flowing artesian wells. Mixed farming. Leading products all cereals, forage and vegetables. Dairy products cattle, sheep and hogs, cordwood sand and gravel. Served by C.P.R., C.N.R., G.T.R. and Greater Winnipeg Water Districts Railways. Good graded roads. Two power transmission lines from Winnipeg run through district. Winnipeg nearby affords a good market for all produce. Local markets at Transcona, Oakbank, Dugald and Hazelridge. Homesteads of irregular quality available in 6 easterly townships. Price per acre of raw lands \$5 to \$75; improved farms \$30 to \$100. Pop. 4,801, half English, half foreign born, chiefly Galicians and Germans.

**STUARTBURN.** Area 276,480 acres; 44,101 acres cultivated. Land is flat or slightly rolling, and generally well drained. A few marshy places. Fertile dark sandy soil. Good water at 10 to 20 ft. A mixed farming and dairying district. Grains and vegetables thrive. Good local markets. Served by G.N.R. through centre of municipality. Average crops per acre. Wheat, 17 bush.; oats, 32; barley 27; potatoes 347. Pop. 4,204, chiefly Ruthenians. Some homesteads available. Average price per acre of raw lands \$5 to \$15; improved farms \$10 to \$20.

**ST. FRANCOIS XAVIER.** Area 48,961 acres; 14,946 acres cultivated. Land is rolling. Soil, black loam, 12 in. Watered by Assiniboine River. Wells 100 to 200 ft. Served by C.P.R., C.N.R., G.T.P. Mixed farming. Leading crops, wheat, oats, barley and flax. Price per acre of raw lands, \$30; improved farms, \$50. Pop. 543, French Canadians and English.



Apples, Crabapples and Plums are successfully cultivated near Morden. See Stanley Rural Municipality, on page 41.

## NORTH CENTRAL DISTRICT

31

**ST. VITAL.** Area 138,240 acres; under cultivation, 24,262 acres. Pop. 2,920. No further returns.

**TACHE.** Area 138,240 acres; 24,262 acres cultivated. Land is mostly flat. Soil, black loam,  $1\frac{1}{2}$  to 2 ft. deep on clay subsoil. Watered by wells 50 to 70 ft. and flowing wells at 250 to 400 ft. Leading crops, wheat, barley, oats, potatoes. Pop. 1,706, chiefly English and French. Price per acre of raw lands, \$12.50 to \$30; improved farms \$20 to \$60.

**WHITEMOUTH.** Area 167,890 acres, 13,849 acres cultivated. Land is generally rolling with some hills in the north. Soil loamy clay 2 to 4 ft. deep, more suitable for grasses and hay; watered by Whitemouth and Winnipeg rivers and several creeks. The former rising in Whitemouth Lake, twists for 80 miles through the district and abounds with fish. Good wells 20 to 60 ft. Served by C.P.R. and G.T.P., running parallel 6 miles apart. Mixed farming is general. Leading crops, wheat and hay. Oats, barley, peas, timothy and clover do well. Markets at Winnipeg, Kenora and Port Arthur. District is admirably adapted for dairying. Numerous small dairies ship cream and milk to Winnipeg and Kenora. Pea vine and red top timothy is the natural growth of the meadow lands. The Government takes samples of timothy, hay and clover from this district for exhibitions. About 12 cars of potatoes are shipped annually from this district. Spruce timber can be bought from saw mills near the Winnipeg River at from \$13 to \$14 per M. ft. Settlers can take out cordwood in the winter and get \$3 to \$3.25 for spruce, and \$3.75 for tamarack at railway stations. If four miles of drain were put in between Winnipeg River and the C.P.R. a very fine tract of land would be opened up close to developed waterpowers, supplying abundant electricity. Of homesteads 100,000 acres are available. Price of improved farms from \$20 to \$30. Pop. 1,759, including British, Germans and Swedes.

**NOTE.**—The Provincial Government will, in 1919, build a road across the marsh from C.P.R. to a new district, very suitable for mixed farming, that is being organized into a municipality. A number of returned soldiers have already taken up homesteads here.

### North Central District

**ARMSTRONG.** Area 151,821 acres; 8,754 acres cultivated. Pop. 1,251. No further returns.

**ASHERN.** At present not organized, statistics not available. Land is flat and dry. Soil, black loam and clay

loam. Wells 20 ft. to 50 ft. Served by C.N.R. Mixed farming (wheat, oats, barley, live stock). Local markets at Ashern, Moosehorn and Winnipeg. Some homesteads available. Average price per acre, raw lands, \$10; improved farms, \$25 to \$30. Pop. 0,000.

**FOULTON.** Area 138,240 acres; 11,400 acres cultivated. Lands slightly rolling.  $3\frac{1}{2}$  townships in the Riding Mountain. Here is a timber reserve where big game and fur-bearing animals are plentiful. Soil black loam from 6 to 15 in. deep with clay subsoil. Watered by small creeks. Wells 15 to 40 ft. Mixed farming. Leading products: wheat, oats, barley, roots, dairying. Chief market Winnipeg. Raw lands \$12 to \$20 per acre. Improved farms \$20 to \$35. Pop. 722, Canadians, Germans, Russians, Austrians.

**CARTIER.** Area 128,000 acres; 45,000 acres cultivated. Land, flat. Soil, black loam with clay subsoil. Watered by wells 50 to 60 ft. Served by C.N.R. and G.T.P. Mixed farming and grain. Leading crops, wheat, hay. Local markets at Elie and Dacotah. Price per acre of raw lands, \$18 to \$25; improved farms, \$30 to \$40. No homesteads available. Pop. 1,920, French, English speaking.

**COLDWELL.** Area 207,360 acres, 4,816 acres cultivated. Land is rolling, soil sandy loam. Wells average 35 ft. Mixed farming. Served by 2 railways. Chief crops: wheat, oats, barley, flax, roots. Pop. 1,840, chiefly English.

**CYPRESS, NORTH.** Area 287,520 acres; 140,235 acres cultivated. Land  $\frac{1}{3}$  rolling, rest flat. Soil, sandy loam. Watered by streams and wells averaging 18 ft. Mixed farming. Leading products, wheat, oats, barley, potatoes. Local markets at Carberry, Brookdale, Hellwood. Grain elevators every 5 miles. Served by C.P.R., G.T.R. and C.N.R. Average price per acre, raw lands; \$3, improved farms, \$25. Pop. 1,834. English, Irish, Scotch and Danes.

**ERIKSDALE.** Area 175,397 acres; 23,527 acres cultivated. Land, flat and dry. Soil, black loam and clay loam. Wells 20 to 50 ft. Served by C.N.R. Mixed farming (wheat, oats, barley, dairying). Markets at Eriksdale and Winnipeg. 2 grain elevators at Eriksdale. No homesteads. Average price per acre, raw lands \$10 to \$12; improved farms, \$25 to \$30. Pop. 2,253.

**ETHELBERT.** Area 276,480 acres; 17,731 acres cultivated. Land is rolling, sloping from Duck Mts. Soil, black loam; subsoil, clay, gravel or sand. Watered by rivers, creeks and wells, 14 ft. Served by C.N.R.

Mixed farming. Leading crops, wheat, oats, barley, potatoes. Markets at Ethelbert, Garland. Price per acre of raw lands, \$8; improved farms, \$15. Very few homesteads available. Pop. 4,275. Ukrainians.

**ELTON, NORTH BRANDON DISTRICT.** Area 138,240 acres, 104,120 acres cultivated. Land is slightly rolling and well drained by ravines. Soil, clay loam 12 in., clay subsoil. Watered by a few springs. Wells 10 to 100 ft. Markets at Brandon and Winnipeg. Served by G.T.P., C.P.R. and C.N.R., main lines and branches. Good roads, churches and schools. Mixed farming, grain and stock-raising. District is noted for pure-bred Clydesdale and Percheron horses, Shorthorn, Angus and Holstein cattle. Wheat averages 20 bush.; oats, 50; barley, 35. Numerous prizes won at Brandon Exhibition for stock and grain. Pop. 1,571, including Canadians, English and Scotch. No homesteads available. A little raw land for sale at \$20 to \$25 per acre; improved farms, \$30 to \$60.

**HARRISON.** Area 138,240 acres, 33,320 acres cultivated. Land is rolling. Soil black loam 12 in. Wells 12 to 60 ft. Principally grain growing. Leading crops: oats, wheat, barley, vegetables. Served by C.P.R. through southern part, and C.N.R. through northern part. Local market at Newdale and Sandy Lake. Price per acre raw lands, \$18; improved farms \$25 to \$30. Pop. 1,546.

**HILLSBURG.**—Area 177,600 acres; 9,362 acres cultivated. Land is generally rolling. Soil varies from sandy loam to heavy black loam, average depth 12 inches with clay subsoil. Watered on w. by Shell River and Short Creek; on e. by Valley River, natural springs and lakes. Wells 20 to 50 ft. Good mixed farming district. Plenty of pasture and natural hay. Leading crops, wheat, oats, barley, rye, Potatoes are usually good crop. Cultivated hay a fair success. Local markets at Wablin, Sheblin, Bield, and Shortdale. Served by C.N.R. main line. About 2,000 acres of homestead lands available. Average price raw lands \$8 to \$12. Improved farms \$10 to \$25. Wood for fuel generally obtainable. Cheap building material at nearby sawmills on Riding and Duck Mt. Forest reserves. Fish, duck and big game plentiful. Population 1,000.

**LAC DU BONNET.** Area 276,480 acres; 3,297 acres cultivated. No further returns.

**LANGFORD.** Area 135,040 acres, 84,039 acres cultivated. Land is rolling prairie, situate on slopes approaching Riding Mountains. Soil black loam, 16



to 30 in. deep. Exempt from frost. Wells 12 to 30 ft. Served by 7 lines of railway. Chiefly wheat growing. Dairying is being developed. Average crop: Wheat, 22 bush.; oats, 40; barley, 35; flax, 18. Wood can be obtained from adjacent mountains. Average price per acre raw lands, \$18 to \$25; improved farms, \$25 to \$50. Pop. 1,172, practically all Anglo-Saxons.

**LANDSLOWNE.** Area 253,440 acres, 100,960 acres cultivated. Land is rolling with lower lands well drained. Soil varies from heavy clay to sandy loam. Watered by White Mud and Grassy rivers and smaller streams. Wells 10 to 100 ft. Served by C.P.R. and C.N.R. Local markets at Arden, Keyes, Plumas, Glenella, Kelwood, Riding Mountain, Birnie, Eden, Neepawa. Mixed farming, grain and dairying. Wheat averages 20 bush.; oats, 40; barley, 25; flax, 13. Pop. 2,533, including Canadians and British. Price per acre of raw lands, \$5 to \$40; improved, about \$30 to \$40.

**LAWRENCE.** Area 408,320 acres, 6,485 acres cultivated. Land is rolling with ridges from s.w. to n.e. and meadow land between. Easily drained. Soil is black loam, 6 in. to 2 ft. deep, with limestone, gravel and clay subsoil. There are lakes on n.e. and w. boundaries. Wells 50 to 60 ft. Chiefly mixed farming. About 600 homesteads available. Local markets at St. Rose du Sac, Ochre River, and Makinak. Pop. 1,785, including English, Scotch, Canadians and Austrians. Price of raw lands \$8 to \$10 per acre.

**MC CREARY.** Area 207,360 acres, 12,000 acres cultivated. Land is level and well drained. Ranges 13 and 14 have shallow soil with stony ridges. Ranges 15 and 16 heavy black loam, 12 to 18 in. Clay subsoil, with much brush. Good water obtained at 12 to 18 ft. Markets at Winnipeg, Brandon, Neepawa, Dauphin, and local markets. Abundant growth of feed makes mixed farming good. Wheat averages 22 bush., oats, 55; barley, 43; flax, 18. Pop. 1,650, including English, Canadians, Americans, and French Canadians. Timber plentiful in Riding Mountains. Good scenery and sport. Hudson's Bay Co. and C.N.R. have lands for sale. Price per acre of raw lands, \$18; improved, \$30 to \$60.

**NORFOLK, NORTH.** Area 276,480 acres, 132,645 acres cultivated. Land varies from hilly to flat. Soil sandy loam and clay loam. Watered by wells 10 to 70 ft. Winnipeg and local markets at Macgregor, Austin and Sidney. Served by C.P.R., C.N.R. and G.T.P., main and branch lines. Mixed farming, grain dairying and stock. Wheat averages 18 bush.; oats,



40; barley, 30; flax, 15. Pop. 3,221, including English, Scotch, Irish, and Canadians. Price per acre of raw lands \$10 to \$15; improved, \$30 and up. No homesteads available.

**OCHRE RIVER.** Area 127,592 acres; 21,134 acres cultivated. Land is rolling or flat. Soil along the Ochre River is heavy black loam, 2 ft., clay subsoil, balance of land is good quality of black loam, 12 in., with clay and shale subsoil. Watered by Ochre and Turtle rivers and numerous streams fed by springs rising in Riding Mountains. Wells average 20 ft. Very good water. Markets at Winnipeg, Portage la Prairie, Dauphin, and local points. Served by C.N.R. main line and Ste. Rose branch. Mixed farming and grain growing. Wheat averages 20 bush.; oats, 55; barley, 35; (in 1914 some farms yielded 40 bush. of wheat, and 100 bush. of oats). Pop. 1,243, English speaking with a few French and Belgians. Homesteads available in 41 townships. Price per acre of wild lands \$10 to \$20; improved, \$12 to \$40.

**PORTAGE LA PRAIRIE.** Area 501,893 acres; 223,635 acres cultivated. Land is level prairie. Soil black loam on clay subsoil. Watered by wells 16 to 135 ft. Served by main lines and branches C.P.R., C.N.R., G.T.P., G.N.R., giving easy access to markets at Winnipeg and Fort William. Grain growing districts. Wheat averages 20 bush.; oats, 50; barley, 40; flax, 15; roots, 300. Pop. 3,899, including Canadians, Americans, English, Scotch, Irish. No homesteads available. Average price per acre of raw lands, \$10 to \$25; improved, \$30 to \$65.

**ROSEDALE.** Area 207,360 acres; 82,193 acres cultivated. Land is rolling, traversed by Riding Mts. Soil except s.e. corner black loam, 12 in. or more; clay subsoil. Watered by streams. Wells 10 to 50 ft. Neepawa and other local markets. Served by 50 miles of railway in the municipality. Farming all kinds, chiefly grain. Wheat averages 20 bush.; oats, 45. Abundant fuel and timber in neighbourhood. Pop. 3,061, English speaking, with Slavs in n.w. Price per acre of raw lands \$15; improved, \$30 to \$40.

**ST. LAURENT.** Area 96,197 acres; 946 acres cultivated. Soil varies. Watered by Lake Manitoba, Shoal Lake and several small lakes. Wells from 8 to 60 ft. A mixed farming and dairying district. Served by C.N.R. Markets at local points and Winnipeg. Average price of raw lands, per acre \$10; improved farms, up to \$24. Pop. 903, includes Canadians, Irish, English, and French.



The total area of Manitoba is 251,832 sq. miles. Of this  
of which about 9 million

**SPECIALLY COMPILED  
FOR  
HEATON'S HAND BOOKS  
OF CANADIAN RESOURCES**

*Rural Municipalities shown  
with dotted boundary lines*

SCALE OF MILES



over 30 million acres of land can be cultivated to advantage;  
acres are under cultivation

**STE. ROSE.** Area 177,920 acres; 24,738 acres cultivated. Land is flat with ridge running n. to s. Soil, black loam, 6 to 12 in; yellow clay and sandy subsoil. Watered by Turtle River. Wells 30 to 150 ft. Served by C.N.R. (twice a week from Ochre River). Mixed farming, grain, cattle raising, dairying. Leading crops, wheat, oats, barley, hay. Local markets, Ste. Rose du Lac, Laurier, Ste. Amelie, Valpey. Price per acre of raw lands, \$10 to \$25; improved farms, \$15 to \$35. A few homesteads available. Pop. 1,794, French-Canadians, Belgians.

**WESTBOURNE.** Area 807,600 acres; 112,000 acres cultivated. Land is level, sloping gently, and well drained. Soil varies from sandy loam to heavy clay. Watered by Lake Manitoba and several rivers. Wells from 20 to 120 ft. deep. Markets well served by C.N.R. main line and 2 branches, and C.P.R. 18 stations in municipality. Mixed farming and stock raising. Wheat averages 20 bush.; oats, 60; barley, 30; flax, 16; roots yield heavily. Pop. 7,772, (increasing rapidly) Canadians, British, Americans, Icelanders, Russians, Germans and Galicians. Big Point on Lake Manitoba, is a summer resort. C.N.R., C.P.R. A few homesteads. Price per acre raw lands, \$8 to \$16; improved \$30.

**WOODLEA.** At present unorganized, statistics not available. Land, flat and dry. Soil, clay loam. Wells 20 to 50 ft. Served by C.N.R. Mixed farming (wheat, oats, barley, live stock). Markets at Mulvihill, Winnipeg. Some homesteads available. Average price, raw lands, \$10; improved farms, \$25 to \$30.

**WOODLANDS.** Area 260,778 acres; 29,885 acres cultivated. Land is flat and dry. Soil varies; in parts it is shallow and stony, but the greater portion compares favorably with any in the Province. Watered by wells 15 to 100 ft. Markets at Winnipeg. Served by C.P.R. main line and C.N.R., 2 branches. All kinds of farming. Wheat averages 23 bush.; oats, 36; barley, 38; flax, 12; Pop. 1,176. No homesteads available. Price per acre of raw lands, \$15 to \$20; improved, \$30 to \$50.

### South Central District

**ARGYLE.** Area 190,595 acres; 94,280 acres cultivated. Land is rolling. Soil 18 in. of black loam with clay subsoil. Wells average 25 ft. Good railway transportation. Average crops per acre: Wheat, 20 bush.; oats, 60; barley, 35; flax, 12. Local markets at Baldur,

Greenway, Glenora and Neelin. Pop. 1,237, including Canadians, English and Icelanders. Land mostly taken up. Very few homesteads available. Price of raw lands, \$20; improved farms, \$25 to \$30.

**CYPRESS, SOUTH.** Area 266,040 acres; 78,000 acres cultivated. Land rolling, flat and hilly in some parts. Soil, sandy loam, watered by rivers and wells. Mixed farming. Leading crop, wheat. Local market at Glenboro. Average price improved farms \$50 to \$75. Pop. 2,000, English, Canadians and Icelanders.

**DUFFERIN.** Area 218,880 acres; 126,150 acres cultivated. Land is flat. Soil: Township 7 is sandy, elsewhere is black and clay loam, averaging 2 ft. with clay subsoil. Watered by Boyne River and Tobacco Creek. Wells 14 to 125 ft. Served by C.P.R., C.N.R. and G.N.R.; 3 trains to Winnipeg daily. Leading crops: wheat, oats, barley, flax. Pop. 2,221, including Canadians, Scotch and Americans. District has won first prize for wheat in competition with the Province.

**GREY.** Area, 230,400 acres; 144,896 acres cultivated. Land, partly flat, partly rolling. Soil, sandy loam and black loam, 6 in. to 15 in. clay subsoil. Watered by wells 10 to 500 ft. and artificial ponds. Mixed farming and dairying. Leading products, wheat, oats, barley, butter, eggs, beef and pork. Local markets at Winnipeg, Elm Creek, St. Claude and Fannystelle. Served by C.P.R. and G.N.R. Raw lands cost \$10 to \$30. improved farms \$15 to \$50. Pop. 2,272, English, Irish, Scotch, French, Belgians.

**LORNE.** Area 230,400 acres; 101,442 acres cultivated. Land is mostly rolling. Soil black and clay loam, 18 in. Watered by wells, 20 ft. Well wooded and picturesque, with several lakes. Markets at Winnipeg, 84 miles, Brandon, 87 miles, via C.N.R., and Somerset, Cardinal, Altamont, and Swan Lake. Served by C.N.R. Farming—grain, cattle, hogs, dairying. Wheat averages 22 bush.; oats, 50; barley, 30; Pop. 3,812, including Canadians (English and French), British and Belgians. Price per acre raw lands, \$20; improved, \$30. No homesteads available. Provincial Government has lands for sale, also Hudson's Bay Co. and Canada N.W. Land Co., Winnipeg.

**LOUISE.** Area 230,560 acres; 147,692 acres cultivated. Land is rolling. Soil mostly black loam, 1½ to 2 ft. deep, clay subsoil; some light soil. Townships 1 and 2 have especially fine lands and buildings. Watered by Pembina river and creeks. Wells 15 to 100 ft. Local markets at Pilot Mound, Crystal City and Clearwater. Mixed farming and grain; some stock raising.

## AGRICULTURAL DISTRICTS

Wheat averages 20 bush.; oats, 45; barley, 35. Pop. 2,110. all British. Price per acre raw lands, \$23; improved \$32. No homesteads available.

**MACDONALD.** Area 274,698 acres; 152,516 acres cultivated. Land is level, or slightly rolling. Watered by La Salle and Scratching rivers. Wells 20 to 30 ft. Soil is good black loam. Local markets at Sanford, Winnipeg, La Salle and Starbruck. Served by C.N.R. and C.P.R. Farming—grain, cattle and dairying. Wheat averages 22 bush.; oats 27; barley, 31; flax, 15. Pop. 3,716, including English, French, Germans and a few Scandinavians. Price per acre of raw lands, \$18 to \$25; improved, \$35 to \$50. No homesteads available.

**NORFOLK, SOUTH.** Area 177,280 acres; 88,273 acres cultivated. Land is undulating. Soil varies, comprising sandy, black and clay loam. Excellent land near Treherne, well timbered, with good water. Watered by Assiniboine River and creeks. Wells about 14 ft. Served by C.P.R. and C.N.R. Local markets at Treherne, Rathwell, Notre Dame. Grain and mixed farming. Wheat averages 17 bush.; oats, 45; barley, 30; flax, 18; potatoes, 200. Pop. 2,801, including English, Scotch Irish, Canadians and a few French. Price per acre of raw lands (poor quality), \$5 to \$20; improved, \$20 to \$50. No homesteads available.

**PEMBINA.** Area 270,080 acres; 148,931 acres cultivated. Land is gently rolling. Soil black loam, 16 in. on clay subsoil. Watered by Pembina River. Good water obtainable in shale rock at 22 ft. A very rich mixed farming, dairying and grain-growing district. Served by C.P.R. Deloraine branch. Five elevators (200,000 bush. capacity) at Manitou. Average crops Wheat, 25 bush.; oats, 50; barley, 35. Oil and natural gas have been struck in large quantities and are being developed by an English syndicate. Pop. 3,274, English, Irish, Scotch and French. Price of improved farms, \$30 to \$45 per acre.

**RHINELAND.** Area 230,400 acres; 170,825 acres cultivated. Land flat and well drained. Soil western part sandy black loam; eastern black loam with clay subsoil. Watered by wells (average depth 16 ft.) and ponds. Served by C.P.R. and Midland R.R. Farming mostly grain. Wheat in 1911 (a dry season) averaged 20 bush.; oats, 40; barley, 30; flax, 15. No dairy cattle. An excellent climate. Musk and water melons grow freely and are fed to pigs. Pop. 6,100 including many Germans, Mennonites. Local markets at Gretna, Altona, Plum Coulee, Rosenfeld, Hasket, Winkler. Price per acre of raw lands, \$20; improved farms, \$30 to \$50.

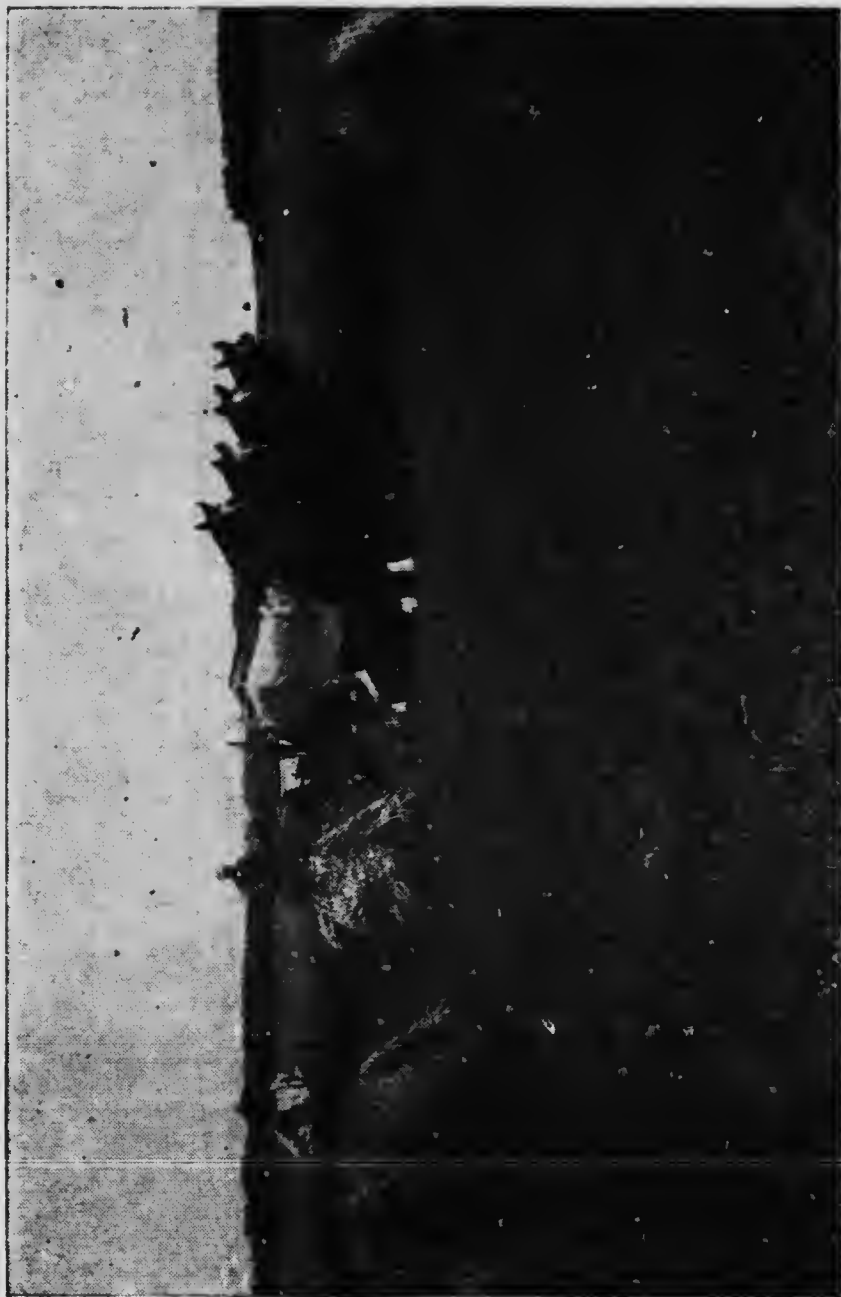
**RIVERSIDE.** Area 139,737 acres; 81,747 acres cultivated. Land is slightly undulating in the south, slightly in the northern district. A large valley runs diagonally from n.w. to s.e., Linette village being on north end of large lake, offering summer resort opportunities. Soil black loam with clay loam subsoil. Souris River flows through the north-western part. Several small lakes through the centre and south districts. Wells 10 to 300 ft. Served by C.N.R. Mixed farming. Leading products, wheat, oats, barley, horses, cattle, and pigs. Local markets are at Dunrea, Ninette, and Margaret. Average price per acre raw lands \$12 to \$20; improved farms, \$25 to \$40. Pop. 1,420, Canadian, English and French-Canadians.

**ROLAND.** Area 115,200 acres; 103,941 acres cultivated. Land is flat and dry. Soil black clay loam. Wells 15 to 50 ft. Mixed farming and grain growing. Leading products wheat, oats, barley, rye, flax. Served by C.N.R. Local markets at Roland and Myrtle. No homesteads available. Average price per acre raw lands, \$35; improved farms, \$50. Pop. 2,258, English, Scotch and Irish.

**STANLEY.** Area 206,800 acres; 112,800 acres cultivated. Land partly wooded; about 10,000 acres prairie; some hilly, including Pembina Mountains, which are interspersed with well-wooded valleys. Soil partly clay loam, partly sandy loam, mostly with clay subsoil. Watered by several creeks lined with trees. Served by C.P.R. and C.N.R., with G.N.R. 1 mile from north boundary. Excellent roads, good markets. Wells average 18 ft. Mixed farming. Cattle and hogs are purchased by buyers on the farms; cream, etc., by creamery at Morden. Average crops: Wheat 20 bush.; oats, 50; barley, 35; flax, 14; roots, 200. Corn for feeding does well. No summer frosts. Pop. 3,845, including Canadians, Scotch, Irish, English, Germans, Meunonites, Scandinavians, Icelanders. Most farms are protected by a bluff. Lands have been held by speculators and tenants. No raw lands available. Improved farms average \$30 per acre.

**STRATHCONA.** Area 118,255 acres; 57,028 acres cultivated. Land is rolling and dry. Soil black loam, 8 ins.; clay subsoil. Watered by small sloughs. Wells 10 to 30 ft. Local markets at Belmont, Hilton and Ninette. Served by C.N.R. Mixed farming. Wheat averages 18 bush.; oats, 24; barley, 28; flax, 10. Pop. 1,288, including Canadians, English and Scotch. Price per acre, raw lands \$10 to \$20; improved, \$25 to \$40. No homesteads available.





The value of the 1918 Grain Crop in Manitoba was estimated at \$271,979,000. See page 19.



**THOMPSON.** Area 126,720 acres; 71,608 acres cultivated. Land is rolling. Soil is vegetable mould washed down in past ages from the Pembina Mountains, two miles from Miami. Watered by creeks. Wells 18 to 30 ft. Farming mixed. Served by C.N.R. Wheat averages 20 bush.; oats, 40; barley, 35; flax, 18. Local markets at Miami and Rosebank. Pop. 1,613, chiefly Canadians. Average price of raw lands, \$25; improved farms, \$40.

**VICTORIA.** Area 168,320 acres; 59,353 acres cultivated. Land is rolling. Soil black loam, 12 ins. deep. Tps. 8 and 9, Ranges 11 and 12, and most of Tp. 7 Range 12, are very sandy. The rest is very good land. Clay subsoil. Watered by Assiniboine River, small streams and lakes. Wells average 18 ft. Served by C.P.R. Grain and mixed farming. Wheat averages 18 bush.; oats, 50; barley, 45; flax, 15. Markets at Winnipeg, Holland and Cypress River. Pop. 2,310, including English, French and Belgians. Price per acre raw lands, \$20; improved farms, \$35 to \$45.

### North Western District

**ARCHIE.** Area 138,240 acres, 50,637 acres cultivated. Land is slightly rolling, with some hay sloughs. Soil in part of n.e. portion is sandy loam. All the remainder black loam 1 to 2 ft. deep, on clay subsoil, drained by coulees running into Assiniboine River. Wells 12 to 60 ft. deep. Served by Kirkella branch C.P.R., main line C.P.R., Virden-McAuley branch C.P.R., and G.T.P. Leading crops: Wheat averages 20 to 38 bush.; oats, 40 to 80; barley, 12 to 18; flax, 12 to 18. Stock raising and dairying on the increase. Pop. 1,112, including Canadians, Scotch, English, Irish and Swedes. Damage by frost, hail and drought is almost unknown. Water power obtainable from Assiniboine River, Bird Tail Creek, Beaver Creek, Sisson's Creek. Price per acre raw lands \$15; improved farms, \$25 to \$35. No homesteads available.

**BLANCHARD.** Area 138,240 acres, 74,050 acres cultivated. Land is rolling. Soil, black loam on clay subsoil. Watered by Oak River and wells 12 to 40 ft. Served by G.T.P., C.P.R. and C.N.R. Good local markets. Mixed farming and grain. Wheat averages 25 bush.; oats, 60; barley, 50; flax, 25. Pop. 1,023, chiefly British; an old and prosperous settlement. Price of raw lands per acre, \$15 to \$20; improved, \$30 to \$40.

**BIRTLE.** Area, 207,360 acres; 59,328 acres cultivated. Soil, black loam; clay subsoil. Abundant wood and

water. Good natural pasture. Watered by Bird Tail Creek flowing from Riding Mts. into Assiniboine River. Served by C.P.R., G.T.R., C.N.R. Average crops per acre: Wheat, 20 bush.; oats, 50; barley, 40. An ideal district for mixed farming, grain, dairying and stock raising. Pop. 1,418, mostly Canadians and British. Price per acre of raw lands, \$15 up; improved farms \$20 up.

**CLANWILLIAM.** Area, 88,000 acres, 12,936 acres cultivated, comprising 4 townships. Land is rolling. Soil sandy loam and clay loam 9 to 18 in. Clay subsoil. Watered by streams and lakes. Wells 12 to 25 ft. Served by C.P.R. and C.N.R. Local markets at Erikson, Clanwilliam and Minnedosa. Mixed farming, subject to frosts, mostly oats grown. Wheat averages 20 bush.; oats, 40 to 80; barley, 30. Pop. 1,163, chiefly Scandinavians. Average price per acre: Raw lands, \$12, improved, \$15 to \$20. Several homesteads available.

**DALY.** Area 136,140 acres, 83,243 acres cultivated; an old settlement. Land is rolling. Soil varies from light sandy loam to heaviest clay, depth 2 ft. Subsoil chiefly clay. Watered by Assiniboine, Oak and Little Saskatchewan Rivers, and numerous creeks and springs. Wells from 20 to 50 ft. Grain growing and mixed farming. Average crops: Wheat, 25 bush.; oats, 50; barley, 60. Very heavy root crops. Local markets at Carnegie, Pendennis, Rivers, Wheatland and Bradwardine. Numerous prizes have been won at exhibitions. No homesteads available. Price per acre of raw lands, \$20; improved, \$40. Pop. 1,138, including Canadians. Scotch, English, Irish and a few Galicians.

**DAUPHIN.** Area 363,928 acres, 76,540 acres cultivated, in the north-west section between and round the Riding and Duck Mountains, skirting lakes Winnipeg and Winnipegosis, and including Lake Dauphin. The whole district is more or less thickly timbered, varying from scattered clumps of willows bordering the Assiniboine in the s.w. to groves of poplar and coniferous forests on the mountains. The country is well drained by the Vermilion, the Ochre, the Turtle, the Valley and Wilson Rivers. Soil is rich alluvial loam. North of the Valley River and east of the C.N.R. it is apt to be shallow; along the rivers it is the very best. A fine and sure mixed farming district. Crops of wheat, barley, oats, maize, alfalfa and ordinary farm produce are abundant. Settlers having no timber on their lands may obtain permits to cut dry timber for fuel to the extent of 25 cords for 25c. in the forest; serves on Riding Mountains (1,535 sq. miles), and on Duck Mountains (1,450 sq. miles). Pop. 4,207.

**ELLICE.** Area 138,240 acres, 24,468 acres cultivated. Land is flat, partly rolling and dry. Soil north of Beaver Creek and west of Assiniboine is sandy, all e. of Assiniboine is good wheat land, especially free from summer frosts; on e. bank sandy loam and clay loam, 2 to 3 ft., on clay subsoil. Watered by Assiniboine and Qu'Appelle Rivers and small creeks. Wells average 12 ft. Local markets at St. Lazare, Foxwarren, Binscarth, Birtle, Welwyn. Served by G.T.P., C.P.R. and C.N.R. Mixed farming. Wheat averages 25 bush.; oats, 65; barley, 45; flax, 20. Pop. 604, including English and French Canadians. Few homesteads available. Price per acre of raw lands, \$10; improved, \$25 to \$40.

**GILBERT PLAINS.** Area 215,040 acres, 82,431 acres cultivated. Land is rolling. 90% good agricultural land. Soil varies. Sandy, black and clay loam; mostly clay subsoil. Watered by rivers and numerous creeks. Wells at 10 to 50 ft. Served by C.N. Ry. Mixed farming and dairying, subject to frost. A first-class mixed farming country. Wheat averages 22 bush.; oats, 45; barley, 35; flax, 15. Firewood obtainable at Riding Mts. to the south and Duck Mts. to the north. Water power on Valley River. Pop. 3,283, Canadians, English, Scotch, Irish, Americans and Galicians. Price per acre of raw lands, \$10 to \$20; improved farms \$20 to \$50.

**GRANDVIEW.** Area 267,480 acres, 54,964 acres cultivated. Land slightly rolling and well drained. Soil, black loam, 12 in.; clay subsoil. Watered by Valley River, Silver Creek, Wilson Creek. Wells 20 ft. Served by C.N.R. main line. Local market at Grandview. Mixed farming, grain predominating. Wheat averages 24 bushels; oats, 60; barley, 40; flax, 15. Pop. 1,413. Canadians. Water power on Valley River. Few homesteads available. Price per acre of raw lands, \$15; improved farms, \$25.

**HAMIOTA.** Area 137,600 acres, 88,475 acres cultivated. The soil is black loam, with heavy clay subsoil. All the land is taken up. Wheat averages 20 to 25 bush.; oats, 50 to 60 bush.; barley 35 to 45 bush. per acre. Served by C.P.R., G.T.P. and C.N.R. Pop. 1,670. Price of unimproved land, \$20; improved land, \$25 to \$35 per acre.

**MINIOTA.** Area 199,680 acres, 88,942 acres cultivated. Land, rolling prairie. Soil, black loam and yellow clay subsoil. Watered by Assiniboine River and tributaries. Wells 20 to 50 ft. Stock farming and grain growing. Served by 4 railways. Average crops: Wheat, 25 bush.; oats, 50; barley, 40; flax, 20. Markets at Miniota,

## AGRICULTURAL DISTRICTS

Crandell, Isabella, Beulah, and Arrow River. Few homesteads available. Price per acre, improved farms, \$30 to \$40. Pop. 2,217, English, Canadians, Scotch and Irish.

**MINITONAS.** Area 291,840 acres, 24,526 acres cultivated. Land is rolling, with some patches of marsh. Soil chiefly deep black loam, with clay and gravelly subsoil. Some gravelly ridges. Plenty of good water at 8 to 12 ft. Served by C.N.R. Local markets. Crops chiefly grain, but district is better suited for mixed farming. Spring wheat averages 20 bush.; fall wheat, up to 40; oats, 60; barley, 40; roots and hay do well. Fuel is plentiful. Wild fruits abound. Pop. 1,640 Canadians, English and Scotch. Some good homesteads available. Price per acre of raw lands, \$9 to \$20; improved, \$12 to \$30.

**MINTO.** Area 89,340 acres, 45,909 acres cultivated. Land is rolling. Soil, black loam, 18 in. deep; clay subsoil. Wood plentiful. Watered by river, streams and small sloughs. Wells from 15 to 100 ft. Mixed farming. Wheat averages 23 bush.; oats, 80; barley, 28. Price per acre of raw lands, \$18; improved, \$25 to \$45. Pop. 1,287.

**MOSSEY RIVER.** Area 368,640 acres, 14,059 acres cultivated. Land is level with a good fall; in parts marshy. Soil, black loam, 6 to 8 in., on clay subsoil. Some gravelly spots. Watered by Fishing, Fork, and Mossey Rivers. Situate 840 ft. above sea level and lying between two large lakes, rainfall is plentiful, and the air contains considerable moisture. Wells about 20 ft. Markets at Winnipeg and villages of Fork River and Winnipegosis. Served by C.N.R. Mixed farming and grain growing. Pop. 2,214, English and Galicians. Few homesteads available. Average price per acre, raw lands, \$12; improved farms cheap.

**ODANAH.** Area 92,160 acres, 41,703 acres cultivated. Land is rolling, broken in places by small lakes. Soil, black loam. Watered by streams. Wells 20 to 150 ft. Local markets at Minnedosa, Franklin, Moore Park, Cordova and Rapid City. Served by C.N.R. and C.P.R. Mixed farming. Wheat averages 25 bush.; oats, 55; barley, 40; flax, 18; potatoes, 400. Pop. 1,001, including English, Scotch, Americans and Swedes. Price per acre of raw lands, \$15 to \$20; improved, \$25 to \$50.

**ROSSBURN.** Area 184,320 acres, 35,421 acres cultivated. Land is rolling. Soil, sandy loam, 10 in., on clay subsoil, in east, and black loam, heavy soil in west. Watered by small lakes and streams. Wells 10 to 100 ft. Local markets at Rossburn, Roach and Vista. Served

by C.N.R. Grain growing and stock raising. Wheat averages 25 bush.; barley, 45; oats, 60; potatoes thrive. Mostly oats grown. Pop. 2,614, including English, Irish, Scotch, Austrians and Galicians. Price per acre of raw lands, \$8 to \$25; improved, \$25 to \$40.

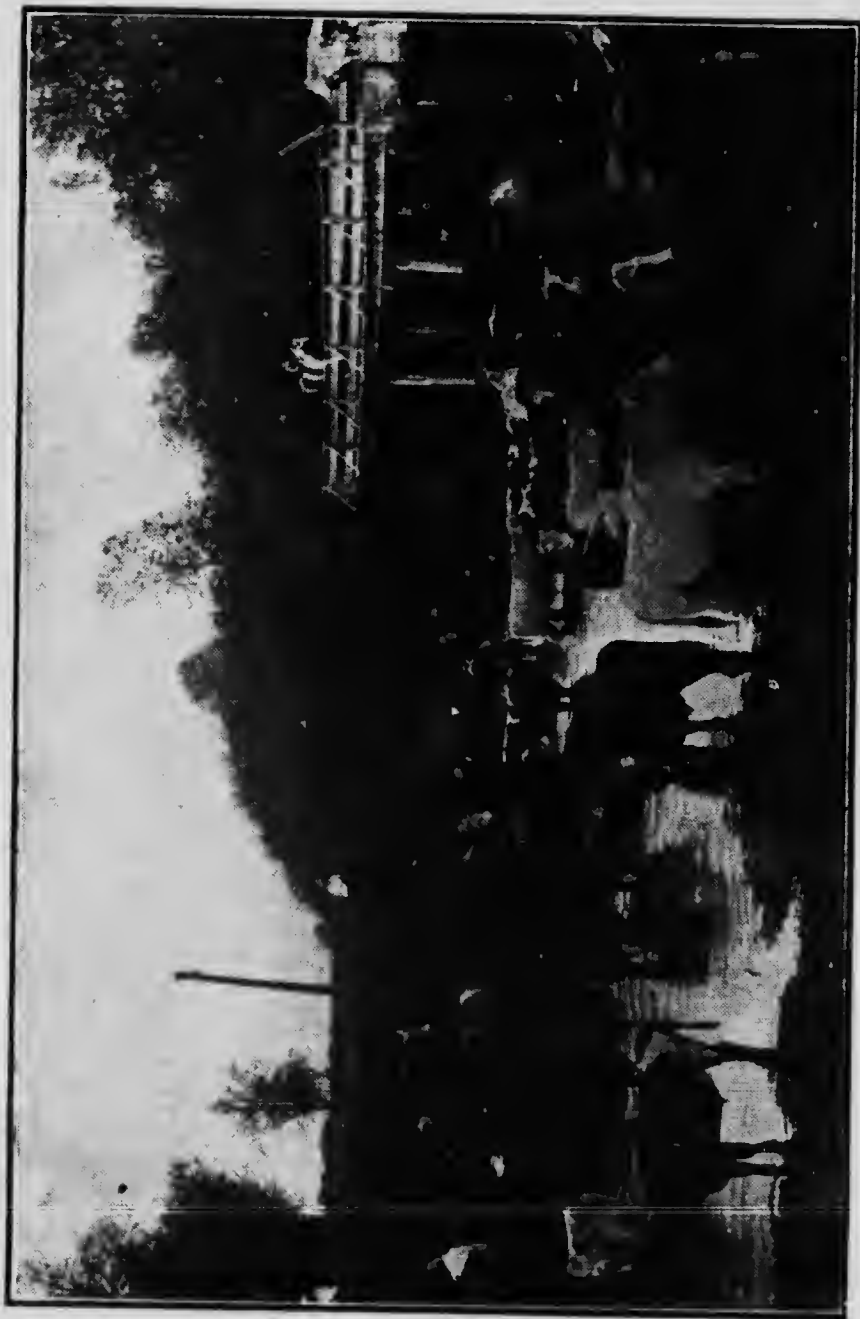
**RUSSELL.** Area 138,240 acres; 42,110 acres cultivated. Land is rolling prairie, with oak bluffs and park lands. Soil, black loam, 2 ft. deep. Wells 10 to 20 ft. A grain-growing and mixed farming district. Served by C.P.R. Yorkton branch and C.N.R. Rossburn branch. Market at Winnipeg. Average crops per acre: Wheat, 23 bush.; oats, 50; barley, 38; flax, 18. Average price per acre of raw lands, \$20; improved farms, \$30. Pop. 985.

**SASKATCHEWAN.** Area 132,480 acres, 65,560 acres cultivated. Land is rolling. Soil, black loam, 1 to 2 ft.; clay subsoil. Watered by Little Saskatchewan River and ponds. Wells 20 to 100 ft. Local markets at Moline, Newdale, Basswood and Pettapiece, Rapid City and Minnedosa. Served by C.P.R. and C.N.R. Mixed farming. Specially good district for oats. Wheat averages 25 bush.; oats, 75. Pop. 1,305. Price per acre of raw lands, \$15 to \$20; improved, \$20 to \$30.

**SHELLMOUTH.** Area 138,240 acres, 37,460 acres cultivated. Land is rolling. Soil, principally clay, with a little gravel. Watered by Assiniboine and Shell Rivers. Wells 18 to 30 ft. Mixed farming. Crops average: Wheat, 30 bush.; oats, 65; barley, 40; flax, 24; roots, 300. Pop. 807, Canadians, with some Galicians. Few homesteads available. Water power at Shell River. Fine scenery on river banks.

**SHELL RIVER.** Area 184,320 acres, 50,000 acres cultivated. Land is flat or slightly rolling, lying in valley between Assiniboine and Shell Rivers. Watered by creeks, and wells 15 to 30 ft. Soil, black loam, 2 to 3 ft.; clay subsoil. Market at Winnipeg. Served by C.N.R. main line. Farming—grain, mixed and dairying. Wheat averages 20 bush.; oats, 45, barley, 20; flax, 10. Pop. 2,095, Canadians and Americans. About 300 quarter sections available for homesteads. Average price per acre of raw lands, \$10 to \$15; improved, \$15 to \$20.

**SHOAL LAKE.** Area 138,240 acres, 54,005 acres cultivated. Land is rolling. Soil, sandy loam, 12 in.; clay subsoil; very good oat land. Watered by lakes and creeks. Wells 30 to 100 ft. Local markets at Shoal Lake, Oakburn and Kelloe. 5 grain elevators at Shoal Lake. Served by C.P.R. and C.N.R. Mixed farming. Wheat averages 28 bush.; oats, 65; barley, 50; roots, 200. Price per acre of raw lands, \$15; improved, \$30. Pop. 1,043.



In 1918 some farmers fed good grade steers for short periods with much profit.

**SILVER CREEK.** Area 138,240 acres, 41,160 acres cultivated. Land is rolling, with bluffs and sloughs. Soil black loam 8 to 24 in. deep; clay subsoil. Watered by small streams and lakes. Wells 15 to 40 ft. Mixed farming and grain. Wheat averages 25 bush.; oats, 60; barley, 35. Subject to occasional frosts. Oats and early varieties of wheat thrive best. Good cattle country. Served by C.N.R., and C.P.R. Local markets at Angusville and Silverton. Pop. 1,245, including Canadians, British and Galicians. Price per acre of raw lands, \$12 to \$20; improved, up to \$30. Hudson's Bay Co., Winnipeg, has lands for sale.

**STRATHCLAIR.** Area 138,240 acres, 55,595 acres cultivated. Land is rolling. Townships 17 to 21 may be termed sandy; balance is black loam mixed with clay, 6 in. deep. Served by C.P.R. and C.N.R. Good wells at from 15 to 20 ft. Some small lakes. Mixed farming is general. A fine grazing country. Leading crops: wheat, oats, barley and potatoes. Markets at Strathclair, Shoal Lake, Newdale and Winnipeg. 10 grain elevators. Easy access to schools and churches. Price of raw lands, \$15 to \$20; improved farms \$25 to \$40. Pop. 1,187, including Scotch, English, Irish, Galicians and Canadians.

**SWAN RIVER.** Area 414,720 acres, 64,108 acres cultivated. Land is generally rolling and fairly dry. Soil black loam 2 ft. deep with clay subsoil. Well watered by rivers and streams. Wells average 20 ft., unlimited pure water absolutely free from alkali. A mixed farming district. Chiefly grain growing with considerable market gardening and dairying. Fall wheat a feature, yields from 25 to 45 bush. per acre. Strawberries, raspberries and all small fruits, tomatoes, cucumbers, celery, marrows, corn and practically every kind of vegetable mature perfectly all through the valley. Strawberries yield from 60 to 75 crates per acre, average price \$4 per crate. Excellent openings for market gardening and fruit growing. Leading crops: wheat, oats, barley, timothy, potatoes and small fruits and vegetables. Markets at Swan River, Minitonas, Benito, Kenville, Durban, and Bowsman. Homesteads are available. Served by C.N.R. main line and Thunderhill branch. Average crops per acre: Wheat, 23 bush.; oats, 50; barley, 45; roots, 300. Average price per bush.: oats, 50; barley, 45; roots, 300. Average price per acre of raw lands, \$10 to \$20; improved farms, \$20 to \$35. Pop. 2,700, chiefly Canadians, English, Americans, and Scandinavians.

**WALLACE.** Area 275,200 acres, 136,579 acres cultivated. Land is rolling prairie, with poplar groves in some parts.



## AGRICULTURAL DISTRICTS

Soil, black loam, 1 to 3 ft. deep, with clay subsoil. Watered by Assiniboine and Pipestone Rivers and tributary creeks. Wells 10 to 50 ft. Served by C.P.R. main line from s.e. to n.w. corner. C.P.R. branches running north from Virden and Kirkella; C.N.R. from south to Virden and C.P.R. branches. Mixed farming. There are 2 creameries. Local markets at Elkhorn, Virden, Hargrave and Kirkella. Well served with rural schools. Municipal 'phone system. A very reliable wheat-producing district. Pure-bred stock is a specialty of the district. Wheat averages 20 bush.; oats, 40; barley, 30; flax, 15. Root crops are heavy. Pop. 1,697, Canadians, English and Scotch. District has won championship for wheat at Provincial Seed Fair. Average price of raw lands, \$15 to \$25; improved farms, \$20 to \$40.

**WOODWORTH.** Area 207,360 acres, 121,269 acres cultivated. Lying north of Sifton municipality. Land is generally rolling, broken by ravines in places. Soil is heavy clay loam; very good wheat. Watered by Assiniboine River. Served by main line of C.P.R. and two other lines to the north. There is some timber in the River Valley in the south and north. Mixed farming prevails. Horses, cattle and hogs are raised. Pop. 1,749.

### South Western District

**ALBERT.** Area 184,320 acres, 110,635 acres cultivated. Situated in the s.w. corner of Province. Land dark loam, clay subsoil; especially adapted for wheat, averaging 20 bush. per acre. Abundant growth of grass. Good water plentiful. Pop. 1,237. Cultivated land from \$18 to \$25 per acre; uncultivated land from \$12 to \$18.

**ARTHUR.** Area 183,840 acres, 137,832 acres cultivated. Land is flat, traversed by creeks with steep banks. Soil varies from sandy loam to clay loam, 6 to 24 ins. Watered by Souris River, creeks and wells (average 25 ft.). Markets at Brandon and Winnipeg. Served by C.P.R., 2 branches. Mixed farming and grain growing. Pop. 1,402, Canadians. Price per acre raw lands, \$12 to \$20; improved, \$40.

**BRENDA.** Area 184,320 acres, 157,363 acres cultivated. Land is rolling and nearly all dry. Soil black loam, 12 in., clay subsoil. Tp. 4 .R. 25, is sandy. Watered by wells 25 to 40 ft. Natural gas has been struck in Waskela and is used for lighting, etc. Local markets at Napinka, Deloraine, Goodlands and Waskela. Served by C.P.R., 2 branches. Farming chiefly grain, some mixed, dairying and cattle. Pop. 1,817, including



Anglo-Saxons and Danes. Price per acre of raw lands, \$28 to \$30; improved, \$32 to \$40.

**CAMERON.** Area 183,680 acres, 115,705 acres cultivated. Land chiefly rolling, in parts hilly; occasional marshes. Soil sandy north of Souris River, black loam at south. Wells 10 to 180 ft. Farming chiefly grain, some dairying. Served by C.P.R. and C.N.R., which meet at Hartney. Local markets at Winnipeg, 160 miles; Brandon, 40 miles; and local stations. Average crops: Wheat, 20 bush.; oats, 35; barley, 30; flax, 15; roots, 200. Few homesteads available. Pop. 1,298. Average price per acre, raw lands, \$30; improved farms, \$45.

**CORNWALLIS.** Area 131,711 acres, 63,267 acres cultivated. Six townships. Land is rolling. Soil mostly black loam on clay subsoil. Townships 9 and 10, R. 17, are gravelly. Watered by Assiniboine and Little Souris rivers and Willow Creek. Wells 18 to 40 ft. The municipality includes the City of Brandon (pop. 22,000). Served by C.P.R., C.N.R., G.N.R. and G.T.P. Mixed farming and grain. Wheat averages 20 bush.; oats, 60; barley, 40; flax, 15; potatoes, 300. Some of the best cattle and horses in the West are bred here. The champion steer of 1912-1913 International Live Stock Exposition at Chicago was reared in this district; see under "Agriculture". Pop. of district 1,248, outside Brandon. No homesteads or raw lands available. Price per acre of improved farms, \$30 to \$60.

**EDWARD.** Area 184,320 acres, 100,720 acres cultivated. Land is rolling with level stretches. Soil varies, sandy loam, black loam, and clay loam is found, with clay subsoil; a few gravel streaks. Watered by creeks and wells from 12 to 40 ft. Farming, chiefly grain, some dairying. Served by three railways. Telephone system throughout. Local markets at Pierson, Lyleton, Elva and Tilston. Average crops: Wheat, 15 bush.; oats, 30; barley, 25; flax, 14; roots, 300. First prize for wheat at Chicago Exhibition. Pop. 1,310, chiefly British or Canadians; a few Germans and Swedish-Americans. Price per acre: Raw lands, \$10 to \$20; improved farms, \$20 to \$40.

**GLENWOOD.** Area 137,600 acres; 103,675 acres cultivated. Land is rolling. Soil, sandy to clay loam, clay subsoil. Watered by Souris River. Wells, 10 to 100 ft. Natural park on Souris River becoming popular summer resort. Served by C.N.R. Grain, mixed farming, cattle raising, dairying, small fruits. Leading crops, wheat, oats, barley, potatoes. Markets at Souris, Monteith, Carroll, Beresford. No homesteads or raw lands avail-

able. Price per acre of improved farms, \$20 to \$50. Pop. 832, Canadians, Scotch, English.

**MORTON.** Area 276,480 acres, 136,000 acres cultivated; an old settlement. Land is rolling. Soil, black loam, 6 to 12 ins., on clay subsoil. Watered by 5 streams from Turtle Mt. Township 1 in Turtle Mt. is hilly. Wells 18 to 40 ft. Served by C.P.R., C.N.R. and G.N.R. Leading crops: Wheat averages 18 bush.; oats, 40; barley, 35; flax, 15. Pop. 1,642, Canadians, English, Scotch and Irish. Among the lakes of Turtle Mt. is a summer resort, with good fishing. Average price per acre of improved farms, \$25 to \$50. No raw lands for sale.

**OAKLAND.** Area 138,240 acres, 91,507 acres cultivated. Land is slightly rolling. Soil, sandy loam in n.e. corner. The rest, black loam, 1½ to 3 ft. Friable clay subsoil. Watered by Assiniboine and Souris Rivers and numerous creeks. Wells 15 to 70 ft. Local markets at Wawanesa and Rounthwaite on C.N.R., and Methven, Nesbitt and Carroll on C.P.R. Served also by G.N.R. Grain growing and horse raising. Wheat averages 20 bush.; oats, 40; barley, 28; flax, 21. Pop. 1,498, including Canadians, English, Scotch and Irish. Price per acre: Raw lands, \$15 to \$30; improved, \$25 to \$40.

**PIPESTONE.** Area 276,480 acres, 172,836 acres cultivated. Land varies from flat to hilly. Soil, from sandy loam to clay loam, on sand-clay subsoil. Watered by Pipestone Creek and others. Wells 8 to 100 ft. Served by C.P.R. and C.N.R. Local markets. Grain-growing district. Wheat averages 18 bush.; oats, 50; barley, 35; flax, 15. Pop. 3,021, including Canadians, Scotch, English. No homesteads available. Average price per acre: Raw lands, \$10 to \$20; improved, \$20 to \$35.

**SIFTON.** Area 206,700 acres, 51,923 acres cultivated. Land, generally, is rolling; in parts hilly, with flats between the ridges. Soil is partly light loam with clay subsoil; in parts sandy. Served by C.P.R. main line and 2 branches, and C.N.R. 2 miles from Oak Lake. Watered by Assiniboine River and Oak Lake. Well adapted to general farming. Much wheat is grown and coars: grains. Stock-raising is very profitable. Wheat averages 20 bush.; oats, 30; barley, 30. At Oak Lake there is a flour mill (daily capacity 750 bbls.). Poplar, elm, ash, and maple are found in the valley of the Assiniboine River. Pop. 1,336, including Canadians, Scotch, English, French Canadians. Price per acre: Raw lands, \$10 to \$14; improved, \$15 to \$45. Good duck shooting near Oak Lake.

**TURTLE MOUNTAIN.** Area 223,413 acres, 124,308 acres cultivated. Land is rolling. Soil, black loam, clay sub-

soil. Watered by streams. Wells from 16 to 40 ft. No land is further than 8 miles from a railway station. Wheat is leading crop. Oats, barley, flax and roots do well. Pop. 1,895, chiefly Canadians. Average price of raw lands, \$10 to \$20; improved farms, \$30. There is a beautiful summer resort at Killarney Lake.

**WHITEHEAD.** Area 137,133 acres, 92,446 acres cultivated. Land slightly rolling, well drained. Soil, 1 to 1½ ft., black loam with clay subsoil. Assiniboine River runs through northern part. Wells 7 to 70 ft. Leading products, wheat, oats, barley, rye. Extensive horse, cattle and sheep breeding. Served by C.P.R., C.N.R., G.N.R. Local markets at Brandon, Beresford, Alender, Hemnay, Terrance and Griswald. Price per acre, improved lands, \$25 to \$45. Pop. 1,028, English, Scotch, Irish, Canadian.

**WHITEWATER.** Area 138,240 acres, 97,500 acres cultivated. Land is rolling. Soil, black loam on heavy clay subsoil. Watered by Souris River. Wells 40 ft. Served by C.N.R. and G.N.R. Local markets at Minto, Elgin and Fairfax. Grain growing and some stock. Wheat averages 20 bush.; oats, 45; barley, 50; flax, 12. Pop. 1,515, mostly Ontario Canadians. A very rich district, with good buildings. Price per acre: Raw lands, \$25; improved, \$40.

**WINCHESTER.** Area 172,637 acres, 106,991 acres cultivated. Mostly rolling or flat land. Soil, clay loam, 12 to 18 ins.; clay subsoil. Watered by wells 15 to 200 ft. Markets at Deloraine, Hartney, Elgin and Whitewater. Served by C.P.R. and C.N.R. Farming, chiefly grain.. Wheat averages 18 bush.; oats, 40; barley, 37; flax, 16. Prizes won for wheat at Winnipeg, Brandon and World's Competition, New York. Pop. 1,349, Canadians, British and Belgians. Lignite coal in district. Price per acre: Scrub, \$10 to \$12; prairie, \$25 to \$30.

---



## Boards of Trade Register

When Writing to a Local Reference, Mention  
Should be made of Heaton's Annual

*Extracts from the Official Boards of Trade Register published in Heaton's Annual and compiled from returns received from the local Boards of Trade. The Provincial Government assumes no responsibility in connection with this chapter.*

Chief Town of County Judicial District marked ¶

**ALEXANDER**, on C.P.R., 149 miles w. of Winnipeg. Hotel, Grandview \$2, restaurant. 3 churches (Ang., Pres., Meth.), 1 school, 4 elevators (159,000 bush.), telephone, lumber yard, livery stable, several stores, bank. Pop. 500. Write Sec.-Treas. Whitehead Municipality, Alexander.

**ALTONA**, on C.P.R., 64 miles s.w. from Winnipeg. Hotel, 4 elevators (151,000 bushels), flour mill, telephone, church, bank, livery stable. Pop. 450.

**BALDUR**, on C.N.R. branch line, 60 miles s.e. of Brandon. Hotel, Baldur. 4 churches, intermediate school, 1 bank, 2 elevators, restaurant. Large shipments of cattle and horses. 2 implement warehouses. A local option town. Alt. 1,408. Pop. 450.

SPECIAL OPPORTUNITIES.—Flour mill, dairying. Write Sec. Bd. Trade.

¶**BEAUSEJOUR**, on C.P.R. between Kenora and Winnipeg, 35 miles. Hotels, Beausejour, Howland. 6 churches (R.C., Greek, Adventist, Luth., Ang., Pres.), public school, bank, elevator, pressed brick co., glass co. Electric power. A good farming country. Poplar, spruce, tamarac and oak in vicinity. Pop. 847.

SPECIAL OPPORTUNITIES.—2nd elevator, cheese factory, creamery, grist mill. Write Sec. Bd. Trade.

**BINSCARTH**, on C.P.R., 155 miles from Portage la Prairie. Hotel, Royal \$2. Restaurant. 3 churches, school, bank, 4 elevators (250,000 bushels), lumber yard, livery stable, 2 blacksmiths, garage, doctor, drug store, general store and 8 others. Pop. 459. Write Agent, C.P.R.

¶**BIRTLE**, on Bird Tail Creek, 195 miles w. of Winnipeg, on C.P.R. and Man. N.W. Ry. 2 hotels. 3 churches, consolidated public school, Indian Industrial School,

bank, local and long distance telephone, town lighted by gas, 4 elevators, flour and grist mill (not operating), machine shop, 2 lumber yards, newspaper, livery stable, moving picture show, spring water, no saloons. An ideal mixed farming district. Pop. 550.

**SPECIAL OPPORTUNITIES.**—Creamery, development of water power on Bird Tail Creek. Write Sec. Bd. Trade.

**BOISSEVAIN**, on C.P.R. and G.N.R., 182 miles s.w. of Winnipeg, 48 miles s. of Brandon. Hotel, Queen's \$2. 5 churches, good high school, Land Titles office, 2 banks, 4 elevators, 1 mill (200 bbls. daily), electric light. A fine wheat-growing district. Summer resort at Lake Max, nearby. Alt. 1,683. Pop. 950.

**SPECIAL OPPORTUNITIES.**—Brick plant, creamery. Write Sec. Bd. Trade.

**BRANDON**, on Assiniboine River, 133 miles w. of Winnipeg, on C.P.R., C.N.R., G.N.R. Hotels, Prince Edward on C.N.R., Cecil, Imperial and 10 others. 16 churches, Brandon College affiliated with McMaster University at Toronto, Ladies College, business college, Normal School, collegiate institute, 8 public schools, separate school, convent, Ruthenian Training School, Indian Industrial School, Experimental Farm, Land Titles office, general hospital, Provincial Asylum, court house, 10 banks, daily papers, motor fire department, 28 miles water mains, 23 miles sewers, 29 miles granolithic sidewalks, electric street railway owned by city, electric light and power plant, central steam heating plant, gas and power plant. Industries include flour, oatmeal, gasoline engines, grain grinders, windmills, pumps, fire engines, portable sawing machines, steel plate hot air furnaces, trip hammers, store counters, show cases, school desks, church pews, pulpits, sashes and doors, leather, harness, saddlery, tents, mattresses, lightning rods, fanning mills, corduroy coats, furs, hats, guide belts, bricks, cement blocks, fireworks, lenses for eyeglasses, cigars, butter, cheese, confectionery, ice cream, temperance beverages, etc. Nearly all the important farm implement manufacturers of Canada and the U.S.A. have distributing houses. 20 wholesale houses. Centre of a rich agricultural district, including 289 small towns, villages and hamlets. Pop. (Dom. Census) 5,620 in 1901; 13,839 in 1911; 15,225 in 1916.

**SPECIAL OPPORTUNITIES.**—Biscuit factory, woollen mills, vegetable canning, and many other lines. Write Commissioner Bd. of Trade.

**CARBERRY**, on C.P.R. and C.N.R., 28 m. e. of Brandon. Hotels, Western, Nelson. 3 churches, public and high schools, 3 banks, elevator, 1 newspaper, 4 livery

stables, 2 general stores. Town owns elec. light plant and waterworks system. Good farming district. Alt. 1,258. Pop. \*878.

NOTE.—\$30,000 Post Office and Customs House to be erected.

SPECIAL OPPORTUNITIES.—Implement dealers, blacksmiths. Write Sec. Bd. Trade.

**CARMAN**, on Boyne River and C.N.R., C.P.R. and G.N.R., 58 miles s.w. of Winnipeg. Hotel, Starkey \$2.50. 5 churches, high school, opera house, dist. office Man. Govt. telephones, Land Titles office, hospital, 3 banks, fine park. Town owns water, sewerage and electric light systems. 3 elevators, newspaper, creamery, 3 livery stables, sash factory. Alt. 872. Pop. 1,500.

SPECIAL OPPORTUNITIES.—Flour mill, wire fence factory, brick yard, steam laundry, cement works (large marl deposits 18 miles), paint works, foundry, tile and sewer pipe works. Town offers free sites for factories and exemption from taxes. Write Sec. Bd. Trade.

**CARTWRIGHT**, on C.P.R., 149 miles from Winnipeg. Hotel. 3 churches, intermediate school, 3 elevators (85,000 bushels), bank, newspaper, creamery, livery stable, laundry, automobile livery and garage. Pop. 400.

SPECIAL OPPORTUNITIES.—Grist mill. Write Clerk of Municipality.

**CRYSTAL CITY**, on C.P.R., 130 miles s.w. of Winnipeg, on Crystal Creek. Hotel, Citizens \$2. 4 churches, 2 banks, 5 elevators (171,000 bushels), newspaper, livery stable. Duck shooting at Rock Lake, 12 miles. Alt. 1,513. Pop. 630.

SPECIAL OPPORTUNITIES.—Brick and cement plant. Write Sec. Bd. Trade.

**CYPRESS RIVER**, on C.P.R. Souris Branch, 95 miles w. of Winnipeg. Hotel. 3 churches, 5 elevators (150,000 bush.), lumber yard, newspaper, 2 livery stables, 1 bank, 1 high school, doctor, 2 general stores, drug store. Alt. 1,232. Pop. 500.

SPECIAL OPPORTUNITIES.—General hardware.

**DAUPHIN**, on Vermilion River and C.N.R., 178 miles n.w. of Winnipeg. Hotels, King's, Grand View, Hamilton \$1.50, \$2. 7 churches, collegiate and 2 public schools, hospital, 2 opera houses, 4 banks. Town owns elec. light, gravitation water system and sewerage. Flour mill, 4 elevators, 2 machine works, 2 creameries, 2 sash and door factories, mineral water factory, rink. Good fishing in Lakes Dauphin and Winnipegosis, big



game in Riding Mountain Forest Reserve. Pop. (Dom. Census) 1916, 3,200.

**SPECIAL OPPORTUNITIES.**—Dauphin has raw material for cereal mills, biscuits, furniture, tannery, glue, binder twine, cheese, butter, brewery, soap, strawboard, pulp, bricks, pickles, packing house. Write Sec. Bd. Trade.

**DELORAINÉ**, on C.N.R., C.P.R., 202 miles s.w. of Winnipeg. Hotel, Palace \$2.50. 5 churches, 8-roomed consolidated school, 2 banks, machine shop, gas co., flour mill, 5 elevators, newspaper. Alt. 1,644. Pop. \*808.

**SPECIAL OPPORTUNITIES.**—Elec. light plant, general store, creamery. Write Sec. Bd. Trade.

**DOMINION CITY**, on Rousseau River and C.P.R., 56 miles s. of Winnipeg. Hotel, Queen's \$2.00. 3 churches, 6-roomed consolidated school, opera house, 3 elevators (60,000 bush.), bank, 1 flour mill, telephone, newspaper, 2 livery, garage and auto livery, restaurant, 3 stores. Alt. 787. Pop. 500.

**SPECIAL OPPORTUNITIES.**—Creamery. Write Municipal Clerk.

**ELGIN**, on C.N.R., 167 miles s.w. of Winnipeg. Hotel, Elgin. 1 bank, 5 churches, garage. Alt. 1,530. Pop. 500.

**ELKHORN**, on C.P.R. main line, 200 m. w. of Winnipeg. Abundant supply of good water, 8-roomed high school, large industrial school, county court, bank, 3 churches, printing office. Hotel, Manitoba. 2 lumber yards, 3 implement agents, 2 livery stables, garage, drug store, municipal telephone, cement sidewalks, agricultural society, grist mill, 3 elevators, shipping 400,000 bushels in 1911-1912. A fine mixed farming district. A.F. & A.M., C.O.F., and I.O.C.F. societies. Race track, rifle association, lawn tennis and cricket clubs. Alt. 1,630. Pop. 600. Write Sec. Bd. Trade, Elkhorn.

**NOTE.**—Pro used main line of G.N.R. is shown to touch Elkhorn with branch from N. Dakota.

**ELM CREEK**, on C.P.R. Souris line and branch to Carman, 46 miles w. of Winnipeg. Hotel, Grandview. 4 churches (Ang., Pres., Meth., R.C.), 1 school, 3 elevators (70,000 bush.), 1 bank, livery, garage, curling rink, pool room, laundry, 3 general stores, 8 others. Pop. 400. Write Clerk of Grey Municipality, Elm Creek.

**EMERSON**, on Red River and C.P.R., C.N.R., G.N.R., N.P.R., and Soo line. Hotels, Russell House \$2.50, Anglo-American \$2.00. 4 churches, 2 public schools, customs and immigration offices, R.N.W.M. Police barracks, bank, elevator, farming, dairying and ranching.



cement block plant, lumber yard, 1 livery stable, garage, 1 auto livery, 1 bakery, 14 stores, newspaper. Alt. 792. Pop. 1,055.

**NOTE.**—In construction, \$35,000 modern building. "Jefferson Highway," New Orleans to Winnipeg, paved auto road, will pass through Emerson.

**SPECIAL OPPORTUNITIES.**—Creamery, picture show. Write Sec. Bd. Trade.

**GILBERT PLAINS**, on Valley River and C.N.R., 198 miles n.w. of Winnipeg. Hotels, Commercial, King Edward \$1.50. 3 churches, consolidated school, brick yard (cap. 3½ millions), newspaper, creamery, 2 lumber yards, 3 livery stables, 4 elevators (130,000 bushels), 2 banks. Plan is projected to make an artificial lake for power and picturesque resort. Neighborhood supplies marl, brick clay, spruce, tamarack, poplar. Big and small game. Alt. 1,314. Pop. 575.

**SPECIAL OPPORTUNITIES.**—Flour mill, beet sugar factory. Abundant water power available, easily developed. Write Sec. Bd. Trade.

**GIMLI**, on Lake Winnipeg, on C.P.R., 56 miles n. of Winnipeg. Hotel, Como. 2 churches (Luth., Unit.), brick school (high and elementary). Govt. telephone, 2 lumber yards, 2 livery stables, drug store, 7 stores, bakery, park. A growing summer resort. Good bathing and boating. Pop. 600.

**SPECIAL OPPORTUNITIES.**—Saw mills, planing mills, bank. Write Sec.-Treas. of Village.

**GLADSTONE**, on C.P.R. and C.N.R., 35 miles from Portage la Prairie. Hotels, Alhambra, Travelers \$1.50. 4 churches (Ang., Pres., Meth., Bapt.), public and high schools, 2 banks, 3 elevators, sash and door factory, flour mill, machine shop, telephone, 2 livery stables, newspaper. Alt. 884. Pop. 782. Write Sec.-Treas., Gladstone.

**GLENBORO**, on C.P.R., 105 miles s.w. of Winnipeg. Hotel, Leland. 3 churches (Ang., Union, Luth.), high school, 3 elevators (90,000 bush.), telephone, lumber yard, 2 banks, creamery. Alt. 1,231. Pop. 475.

**SPECIAL OPPORTUNITIES.**—Grist mill. Write Mgr. Union Bank.

**GRAND VIEW**, on C.N.R. main line, 30 miles w. of Dauphin. 4 churches, 4 elevators, lumber mill (120,000 ft. per day), machine shop, 2 banks, hotel, intermediate school, \$10,000 theatre, municipal waterworks and sewer system, granolithic sidewalks. Centre of fertile farming district. Duck Mountains on north, heavily tim-



bered, chiefly spruce, abounding with game. Alt. 1,431. Pop. 900.

**SPECIAL OPPORTUNITIES.**—Creamery, stave factory, box factory, brick yard. Write Mayor or Sec. Bd. Trade.

†**GRETNA**, on C.P.R. and Midland div. G.N.R., 70 miles from Winnipeg. Hotels, Queen's, King Edward \$1.50. 6 elevators (103,000 bushels), telephone, lumber yard, newspaper, livery stable, customs and immigration office, 3 churches (Pres., Luth., R.C.). Alt. 829. Pop. \*510.

†**HAMIOTA**, on C.P.R. Miniota branch, 50 miles n.w. of Brandon. Boarding house, 6 elevators (162,000 bush.), flour mill, 3 churches, 2 banks, large public school, telephone, acetylene gas for domestic light, 2 lumber yards, newspaper, 2 livery stables, 2 large stores, 4 implement warehouses. Alt. 1,696. Pop. \*565.

†**HARTNEY**, on Souris River and on C.N.R. and C.P.R. Estevan branch, 40 miles from Brandon. Hotel, Willard \$2.50. 4 churches, school, 2 banks, opera house, 5 elevators, brick plant, telephone, 2 lumber yards, 2 garages, 3 general repair shops. Seven lakes within 20 miles furnish good goose and duck shooting. Pop. 630.

**SPECIAL OPPORTUNITIES.**—Development of electric power in Souris River. Write Sec.-Treas. Bd. Trade.

†**HOLLAND**, on C.P.R., 86 miles w. of Winnipeg. Hotel. 3 churches (Ang., Pres., Meth.), high school, 5 elevators (330,000 bush.), flour mill, telephone, lumber yard, livery stable, newspaper, 1 bank. Alt. 1,237. Pop. 500.

**SPECIAL OPPORTUNITIES.**—Creamery, elec. light, brick plant, good clay nearby. Write Sec.-Treas. of Victoria Municipality. Holland.

†**KILLARNEY**, on C.P.R. Napinka branch, 164 miles s.w. of Winnipeg. Hotels, Leland, Melville. 4 churches, 2 banks, town hall and opera house, 4 elevators, creamery, 2 liveries, newspaper, restaurant, 4 garages, flour mill, laundry, lumber yard, 1 sash and door factory, 1 machine shop, telephone, electric light and power plant, public and high schools, Govt. Experimental Fruit Farm. An exhibition held here annually. Fine lake here, makes a good summer resort. Good fishing and boating. Alt. 1,625. Pop. over 1,200.

**SPECIAL OPPORTUNITIES.**—Creamery, laundry. Write Sec. Bd. Trade.

†**MACGREGOR**, on C.P.R., 78 miles w. of Winnipeg. Deer Station on G.T.P.,  $\frac{3}{4}$  mile distant. Hotels, Stanley \$1.50. Grandview \$1.50. 2 churches, public and high school, bank, newspaper, 3 elevators. Pop. 700.

## DESCRIPTIONS OF TOWNS

**SPECIAL OPPORTUNITIES.**—Flour mill, brick plant, good hotel, creamery. Write Mgr. Merchants Bank.

**MANITOU**, on C.P.R., 102 miles s.w. of Winnipeg. Hotel, Manitou House \$2.50. 5 churches, public and Normal schools, new \$30,000 consolidated school, county court, opera house, skating and curling rink, acetylene gas for domestic use, cement sidewalks, good fire protection. Agric. society, newspaper, 2 banks, 4 elevators, flour mill, 2 liverys, 2 garages, 2 lumber yards, 5 implement agents, harness shop, 3 general stores and 15 others. Surrounded by rich mixed farming district. Abundant supply of exceptionally pure water at from 10 to 30 feet. Pop. 639.

**SPECIAL OPPORTUNITIES.**—Oatmeal mill, creamery, aerated water plant, brick plant, pork packing. Write Sec. Bd. Trade.

**MELITA**, on Souris River and C.P.R., 67 miles from Brandon. Hotels, Metropolitan, Commercial \$2.50. 4 churches, high school, Land Titles office, 3 parks, one on Souris River used for picnics; 4 elevators (130,000 bush.), flour mill, 2 garages, 2 machine shops, telephone, 2 lumber yards, 2 banks, newspaper, creamery, 3 livery stables, 21 retail stores. There are strong indications of natural gas. Alt. 1,410. Pop. 900.

**SPECIAL OPPORTUNITIES.**—Electric light plant. Write Sec. Bd. Trade.

**MIAMI**, 80 miles s.w. of Winnipeg, at foot of Pembina Mts., on Miami-Somerset branch of C.N.R. Hotel, Grandview \$1.50 and up. 3 churches, 2 elevators, 1 lumber yard, creamery, several stores, 1 bank, 1 school. Good district for mixed farming. Pop. 400. Write Sec. of Thompson Municipality, Miami.

**MINNEDOSA**, on Little Saskatchewan River, a div. and terminal point of C.P.R. Minnedosa branch, 79 miles w. of Portage la Prairie. Hotels, Tremont \$2.50, Minnedosa \$2.50. 5 churches, hospital, 2 banks, 5 elevators (126,000 bush.), 3 lumber yards, electric light, telephone, 1 newspaper, 3 livery stables, 2 garages, sash and door factory. Centre of Northern Judicial District. Summer resort with boating, bathing and fishing. Alt. 1,671. Pop. (Dom. Census) 1916, 1,831.

**SPECIAL OPPORTUNITIES.**—Oatmeal mill, brick plant, strawboard mill, starch factory, flour and grist mill, 1,000 h.p. elec. power developed. Town offers free sites, cheap water power and partial tax exemption to new industries. Write Sec. Bd. Trade.

**MORDEN**, on Cheval Creek, Midland Ry., connecting with G.N.R. to s. on C.P.R.; 81 miles s.w. of Winnipeg.

Hotel. 5 churches and synagogue, large public and high schools, fine post office, 2 banks, electric light plant owned by town, 3 elevators (90,000 bush.), up-to-date creamery, chop mill, flour mill, cement block plant, telephone, 2 lumber yards, 1 newspaper, 3 livery stables, pump factory, court house and jail, \$35,000 Federal Bldgs. completed 1915, veterinary surgeon, garage, hospital (22 beds), Nurses' Home and isolation hospital. Good farming district. Dom. Govt. 320 acre experimental fruit farm nearby. Cement deposits 14 miles distant. Alt. 988. Pop. 1,500.

**SPECIAL OPPORTUNITIES.**—Dairying and mixed farming. Write Sec. Bd. Trade.

**MORRIS**, on C.P.R., C.N.R., G.N.R. and N.P.R., 40 miles s. of Winnipeg, on Red River. Hotel, Commercial \$2.00. 5 churches, school, 1 bank, 4 elevators (120,000 bush.), telephone (largest exchange in Manitoba except Winnipeg), lumber yard, newspaper, 2 livery stables, 2 machine shops, gas plant, 3 general stores. Surrounded by a rich grain-growing district, of which less than half is under cultivation. Good land obtainable at \$20 to \$40 per acre. Alt. 773. Pop. 700.

**SPECIAL OPPORTUNITIES.**—Dentist, beet sugar factory, wholesale distributing warehouse for farm machinery. Write Sec. of Town of Morris.

**NAPINKA**, on C.P.R. Pembina branch and Estevan and Tilson branch, 60 miles from Brandon. Hotels, Leland, Russell, \$1.50. 3 churches (Ang., Pres., Meth.), 1 public school, 4 elevators (122,000 bushels), telephone, newspaper, 1 lumber yard, 2 livery stables, 1 garage, laundry, about 12 stores, 1 bank, machine shop, Ford agency. Pop. 326.

**SPECIAL OPPORTUNITIES.**—Machine shop. Write Sec. Bd. Trade.

**NEEPAWA**, on White Mud River, on C.N.R. (div. pt.) and C.P.R., 61 miles n.w. of Portage la Prairie, 117 miles n.w. of Winnipeg. Hotels, Hamilton, King Edward \$2.50. 4 churches, 2 public schools and collegiate, 4 banks, 2 elevators, C.N.R. terminals and shops, oatmeal mill (300 bbls. capacity), 1 machine shop, brick plant, sash and door factory, creamery, granite works, 2 newspapers, 3 livery stables, 4 garages. Town owns electric light system and waterworks. Big game in Riding Mountains. Centre of a rich agricultural district. Summer fair of the N.W. Agric. and Art Association is held here. Alt. 1,209. \*Pop. (Dom. Census) 1916, 1,854.

**SPECIAL OPPORTUNITIES.**—Steam laundry, cold storage, mortgage loans  $6\frac{1}{2}$  to 8%. Town gives free sites

and special tax rates to industries. Write Sec. Bd. Trade.

**NINGA**, on C.P.R., 175 miles w. of Winnipeg. Hotel, Turtle Mountain \$2. 4 churches, high school, public hall, 4 elevators (127,000 bush.), 1 bank, telephone, newspaper, livery stable. Pop. 300.

**OAK LAKE**, on C.P.R. main line, 165 miles w. of Winnipeg, 32 miles w. of Brandon. Hotel, Oakland \$2.50. 4 churches, high school, park and playground, agricultural grounds and buildings, bank, newspaper, skating and curling rink, cement sidewalks, municipal telephone, 4 elevators (129,000 bush.), flour mill, machine shop, 2 lumber yards, 2 livery stables, 2 implement agents, 3 general stores, 2 hardware stores, drug store and several others, restaurant. A rich mixed farming district. Excellent duck and goose shooting. Lawn tennis club (good shale courts), A.F. & A.M., I.O.O.F. and C.O.O.F. lodges. Exceptionally pure water supply at depths of from 2 to 10 feet. Alt. 1,415. Pop. 600. Write Sec. Bd. Trade.

**PILOT MOUND**, on C.P.R., 126 miles s.w. of Winnipeg. Hotel, Queen's \$1.50. 3 churches, school, telephone 4 grain elevators (188,000 bush.), 2 banks, lumber yard 12 stores. Alt. 1,551. Pop. 500.

**SPECIAL OPPORTUNITIES.**—Flour mill, creamery, foundry. Write Sec. Bd. Trade.

**PLUMAS**, on Jordan Creek, on C.N.R. main line, 107 miles w. of Winnipeg, 70 miles from Dauphin. 2 boarding houses. 3 churches, park, bank, 2 elevators, 1 livery stable, 1 lumber yard, cement brick plant, feed mill, 3 implement warehouses, blacksmith, 6 stores, 1 newspaper, garage, opera house. Pop. 350.

**NOTE.**—In construction, \$20,000 consolidated school.

**PLUM COULEE**, on C.P.R. and G.N.R. Midland branch. 66 miles s.w. of Winnipeg. Hotels, Queen's, Commercial. 1 church, 1 school, 7 elevators, telephone, lumber yard, 2 livery stables. Alt. 834. Pop. 460.

**SPECIAL OPPORTUNITIES.**—Creamery, baker, flour mill. Write Sec. Bd. Trade.

**PORTAGE LA PRAIRIE**, 56 miles w. of Winnipeg, 15 miles s. of Lake Manitoba, with its fisheries, and in season, summer resort and bathing beach. On main lines of four transcontinental railway systems—the C.P.R., C.N.R., G.T.P. and the G.N.R. Hotels, Portage \$3.00, Empire \$2.00, Albion \$2.00, Rossin (meals only, 50c.), 6 banks, County buildings, court house, General Hospital, Home for Incurables, Provincial Training School, Old Folks' Home, Indian School,

armory, drill hall, two country clubs. Industries, grain elevators (7), flour mills (2), bricks (2), lumber yards (2), threshing machines and farm implements (4), structural castings, corrugated iron culverts, automobile garages (3), steel grain bins, oatmeal mills, pumps, sashes and doors, pickle factory. The neighborhood supplies sand and clay for brick and cement blocks and rough wood. City owns up-to-date waterworks, sewerage plant and electric plant. Power supplied at prices according to quantity used. A popular summer resort. The city owns extensive, rich-wooded park lands. Island Park is most attractive. Alt. 854 \*Pop. 5,860.

**SPECIAL OPPORTUNITIES.**—Manufacture of strawboard and paper boxes, biscuits, starch, pickles, gasoline engines, automobiles, shoes, knitted goods, pianos, overalls, furniture, canneries, wholesale leather goods. City offers free factory sites adjoining 4 great rys., tax exemption or fixed assessment for 20 years when 15 or more hands are employed. Several large firms have already moved from larger cities and put up substantial buildings here. Others propose doing so at an early date. Write Sec. Bd. Trade, Portage la Prairie, for maps, booklets, etc.

**TRAPID CITY**, on Little Saskatchewan River, on C.P.R. (div. pt.), C.N.R. 6 miles n. of Brandon. Hotel, 5 churches, public school, bank. Town owns electric light plant. 4 elevators and 1 warehouse (120,000 bush.), 2 lumber yards, newspaper, picture theatre, 2 livery stables, creamery. Three water powers, total estimated 40,000 h.p. Alt. 1,580. Pop. 750.

**SPECIAL OPPORTUNITIES.**—Dentist, oatmeal mill, sash and door factory, laundry. Write Sec. Bd. Trade.

**RESTON**, on C.P.R., 200 miles from Winnipeg. Boarding house, bank, 1 school, 4 churches, telephone, 4 elevators (112,000 bush.), town electric light plant, 2 livery stables, newspaper, laundry, 2 lumber yards, county court office. Good camping grounds 2 miles distant. Pop. 500.

**SPECIAL OPPORTUNITIES.**—Flour mill, creamery. Write Sec. Bd. Trade.

**RIVERS**, on Little Saskatchewan River, on G.T.P. First div. pt. w. of Winnipeg (142 miles). C.P.R. station at Wheatland (3 miles), on Brandon-Lenore branch. 5 churches (Ang., Meth., Pres., R.C., Greek-Luth.), consolidated school, town and firehall, agric. fair grounds, Govt. local and long dist. telephone, good water supply, newspaper, bank, elevator, lumber yard, auto. livery, Ford agency, 2 general stores, 2 hardware, 14 others. Important coal supply station for G.T.P. main line.





The Selkirk District, connected with Winnipeg by electric railway occupying as it does the picturesque and wonderfully fertile lower Red River Valley, affords the most desirable location in Western Canada, without exception, for suburban homes, market gardens, dairies, and small farms. The photograph shows a characteristic home of this class near Selkirk. Selkirk will appeal to you.

See description Selkirk, St. Andrew's and St. Clement's municipalities, pages 27-28.

**Write BRUCE CAMPBELL, Commissioner, SELKIRK, MAN.**



G.T.P. monthly payroll \$18,000. A rich grain-growing and mixed farming district. Deposits of sand and gravel. Football, baseball, hockey, tennis and gun clubs. Pop. 700.

**SPECIAL OPPORTUNITIES.**—Cement block plant, flour, oatmeal and grist mills. Development of water power on Little Saskatchewan River, 1 mile from town. Dentist. Write Sec. Bd. Trade.

**ROLAND**, on C.N.R. and G.N.R. (Midland), 62 miles s.w. of Winnipeg. Hotel, Commercial \$1.50. 3 churches, high school, 2 banks, 1 lumber yard, 5 grain elevators, 3 farm implement warehouses, restaurant, 8 stores. Alt. 855. Pop. 600.

**SPECIAL OPPORTUNITIES.**—General store. Write Sec. Treas. Roland.

**ROSENFELD**, on C.P.R., 57 miles from Winnipeg. 3 elevators (60,000 bush.), telephone, lumber yard, livery stable, 2 general stores. Write Agent, C.P.R.

**ROSSBURN**, 90 miles from Brandon, on Rossburn branch of C.N.R. Hotel, Queen's \$1.50. 4 churches (Ang., Pres., Meth., Apostolic), 1 school, 3 elevators, 1 bank, 2 implement agents, hardware, harness shop, drug store, 5 general stores, millinery, furniture and undertakers, lumber yard, 2 livery stables, garage. Farm lands from \$12 to \$35. Pop. 350.

**NOTE.**—Flour mill expected to be in operation in 1918.

**RUSSELL**, on C.P.R. and C.N.R., 225 miles n.w. of Winnipeg. Hotels, Queen's, Grand Central. 4 churches, high school, 5 elevators, municipal electric light plant, 2 banks, doctor, creamery, 2 lumber yards, picture theatre, veterinary, newspaper, 2 livery stables, cement block plant, 4 general stores, hardware, drug store, 2 garages. Good farming land. Alt. 1,832. Pop. 850.

**SPECIAL OPPORTUNITIES.**—Oatmeal and flour mill steam laundry, foundry and machine shop, dentist. Write Sec. Bd. Trade.

**ST. BONIFACE**, on Red River, opposite Winnipeg, on C.P.R., G.T.P., G.N.R. and C.N.R. Elec. Railway to Winnipeg. Hotels, Norwood, Quebec, St. Boniface \$1. 4 churches, orphanage, boys' academy, convent. Seat of R.C. Archbishop of Manitoba. 3 public schools, 1 Normal, 2 collegiates, college, seminary, 2 hospitals, Old Folks' Home, 2 newspapers, 3 banks, good water system, electric light and cheap power, brick factory, 5 lumber yards and planing mills, quarry, linseed oil mills, 4 elevators, flour mill, 5 sash and door factories, 2 paint factories, malting, creamery, oil co., tar paper works, ceiling and roofing plant, marble and glass works, Arti-

ficial Ice Co., 2 abattoirs, Union Stock Markets. Alt. 756. Pop. 11,500.

NOTE.—Abbatoir under construction. New Prov. bridge to be completed.

SPECIAL OPPORTUNITIES.—All industries connected with live stock trade. Abattoirs, meat packing, tanneries, etc. Write Sec. Bd. Trade.

**ST. CLAUDE**, on C.P.R., 61 miles s.w. of Winnipeg. Hotel. School, convent, R.C. church, bank, 2 elevators (66,000 bush.). Distributing station Imperial Oil Co., garage, livery, livery and sales stables, 2 general, 3 other stores, 2 blacksmiths, 3 implements, harness and saddlery, butcher, 2 chopping mills, 2 lumber yards, fuel yard, cream station.

SPECIAL OPPORTUNITIES.—Doctor, graduate druggist, barber shop and pool-room, fruit, laundry.

**SELKIRK**, on Red River, head of Lake Winnipeg navigation and seat of its fishing industry. Summer resort and industrial suburb of Winnipeg. 22 miles n. of Winnipeg, on C.P.R. and Electric Railway, C.N. Ry. to East Selkirk. Hotels, Merchants, Canada Pacific. 7 churches, 3 schools, 2 banks, newspaper, 2 liverys, garage, iron rolling mills and electric steel foundries (employing 350 men), saw and planing mill, box factory, 1 wholesale merchandise, 2 navigation companies, 3 cold storage plants, hydro-electric power. Rate,  $\frac{1}{2}$ c. to 8c. per k.w.h. Government shipyards, dry dock, etc. Splendid agricultural, horticultural and dairying district contiguous to city market. Concentrating transshipment point for Lake Winnipeg fishing industry, handling 7,000,000 lbs. per annum. Receiving point for ores and raw material from Lake. Point of shipment for Rice Lake Gold Fields on Lake Winnipeg. Pop. (Dom. Census) 1916, 3,399.

SPECIAL OPPORTUNITIES.—Pulp and paper mill, brick or pottery factory, factories using output of foundries, motor boat factory, match factory, pickle factory, market gardeners and dairying. Special inducements to manufacturers. Write Bruce Campbell, Publicity Commissioner.

**SHOAL LAKE**, on Shoal Lake, on C.P.R., 171 miles w. of Winnipeg. Hotels, Lakeview, Albion. 4 churches, bank, 4 elevators (170,000 bush.), creamery, cement block plant, telephone, 2 lumber yards, newspaper, 2 livery stables, 2 auto garages, 2 harness makers, dentist, tailor, 20 stores. Town owns elec. light system. Boating, fishing and shooting. A summer resort. Alt. 1,793. Pop. 627.

## INDUSTRIAL OPPORTUNITIES

69

**SPECIAL OPPORTUNITIES.**—Oatmeal mill, woodworker wagon builder. Write Sec. Bd. Trade.

**SOMERSET**, on C.N.R. at junction of Carman-Virden and Morris-Somerset branches, 87 miles s.w. of Winnipeg. 2 hotels. 4 churches, public and high schools, 2 banks, 3 elevators, 3 general stores, implement agent, 2 blacksmiths, druggist, newspaper, creamery, garage, machine shop. A mixed farming and dairying country. Alt. 1,565. Pop. 450.

**SPECIAL OPPORTUNITIES.**—Flour mill. Write Sec. Bd. Trade.

**SOURIS**, on Souris River and C.P.R., 31 miles s.w. of Brandon, div. pt. Hotel, King Edward \$2.00. 2 banks, 4 churches, 3 elevators, telephone, planing mill, public and high schools, flour mill, show case factory, foundry and machine shop, municipal elec. light plant. Water-works and sewerage system. A fine natural park, with good fishing, boating and safe bathing. C.P.R. shops. Alt. 1,400. Pop. (Dom. Census) 1916, 1,845.

**SPECIAL OPPORTUNITIES.**—Brick plant, laundry, building houses to rent, plumbers and gasfitters, vegetable cannery. Write Sec. Bd. Trade.

**STONEWALL**, on C.P.R. Arborg br., 21 miles n.w. of Winnipeg. Elec. Ry. to Winnipeg. Hotels, Canada Pacific \$2.00, Hudson Bay \$1.25. 4 churches, public school, collegiate institute with agricultural branch, 2 banks, electric light and power plant, 2 elevators, 2 lumber yards, planing mill, 2 stone quarries, 8 lime kilns, newspaper, 2 livery stables. Deposits of building stone, lime, gravel, and sand. Commercial court and land registration centre. Alt. 826. Pop. 1,300.

**SPECIAL OPPORTUNITIES.**—Market gardening and milk for Winnipeg market. Mixed farming. Residential suburb for Winnipeg. Write Mgr. Bk. Hamilton.

**SWAN RIVER**, on Swan River, 275 miles n.w. of Winnipeg, div. pt. on C.N.R. Winnipeg-Prince Albert line and terminus of C.N.R. Thunderhill branch. Hotel, Commercial \$2. 5 churches, \$25,000 high school, public school, agric. fair grounds, park, fire hall, hospitals. Town owns sewerage system. 2 banks, elevator, creamery, machine shop, 4 implement agents, 3 liveries, stock yards, wholesale oil distributing plant. Newspaper, photographer, 4 general, 2 hardware and several other stores, 3 restaurants. Extensive timber limits in vicinity, over 85 million feet cut in 1912. The distributing centre of rich stock-raising, grain-growing and market-gardening district—fall wheat a feature. Big game shooting and fishing. Tennis, baseball, football, hockey and snowshoe clubs. Pop. 850.

**SPECIAL OPPORTUNITIES.**—Electric light and power plant, 800 h.p. awaiting development. Pottery plant, brick yard, beet sugar industries, wholesale produce and cold storage warehouse, furniture factory, good restaurant, blacksmith shop, machine shop. Write for free pamphlets to Sec. Bd. Trade.

**THE PAS**, at junction of Saskatchewan and Opasquia Rivers, on C.N.R. Steamers to local points. Hotel, Opasquia. Hudson Bay Ry. offices. Municipal telephone, light, water and sewerage systems. 3 churches (Ang.; Pres., R.C.), public schools, separate Cath. school, community building, jail, hospital, 2 banks, lumber mill (monthly output 5,000,000 ft.), employing 500 men, has its own electric light plant and waterworks; 7 general stores, 13 others, 6 restaurants, newspaper, Dom. Lands Agency. Customs outpost, Indian agency, Indian Reserve (500 inhabitants). Neighborhood supplies practically unlimited lumber. Beautiful lake and river scenery, fishing, big and small game. Football, baseball and tennis clubs. Promising discoveries of gold and copper have been made in vicinity. Outfitting point for Beaver Lake and Herb Lake. Schist Lake and Flin Flon Gold Fields. The fur trade in 1916 amounted to \$250,000. Pop. (assessment 1918) 1,259.

**SPECIAL OPPORTUNITIES.**—Boat factory, sash and door factory, brick yard, building houses to sell or rent; market gardening. Write Sec. Bd. Trade.

**TRANSCONA**, 6 miles e. of Winnipeg, on Can. Govt. Ry., C.N.R., C.P.R., G.T.P.; 150 miles of yard trackage. Hotels, Royal George, Queen's. 6 churches (Ang., Meth., Pres., R.C., Greek), central and 3 public schools, municipal buildings, fire hall, covered rink, theatre, 3 parks, newspaper, telephone, 2 banks. Town owns water system. Electric light supplied by city of Winnipeg. Electric power, domestic rate  $4\frac{1}{2}$ c. per k.w.h.; industrial, 3c. Industries, planing mill, tar and chemicals, cartridges, paving blocks, Can. Govt. railway shops and roundhouse employ about 1,500 men; G.T.P. Ry. stores, Shell Co. (employ 600). Good dairying country. Football league (6 teams), baseball, hockey and gun clubs. Pop. (Dom. Census) 1916, 3,357.

**SPECIAL OPPORTUNITIES.**—Scarcity of workmen's houses. To manufacturers, cheap sites, good shipping facilities, cheap power. Write Sec. Bd. Trade.

**TREHERNE**, on C.P.R. Souris branch, 77 miles from Winnipeg. Hotel, Central. 4 churches (Ang., R.C., Pres., Meth.), public and high schools, 4 elevators (144,000 bush.), lumber yard, 2 banks, flour mill, electric light, newspaper, restaurant, 10 stores. Natural gas in small quantities. Alt. 1,211. Pop. 600.

## INDUSTRIAL OPPORTUNITIES

71

**SPECIAL OPPORTUNITIES.**—Good hotel, general store. Write Mgr. Bank of Commerce.

**TYNDALL**, 29 miles e. of Winnipeg, on C.P.R. Hotel, Tyndall. 5 churches, public school. Winnipeg elec. power passes within half-mile of town. Industries, 3 lime and stone quarries, 13 stores. Pop. of Tyndall and Garson, 1,000.

**NOTE.**—Railway being surveyed to Rice Lake gold fields.

**SPECIAL OPPORTUNITIES.**—Elevator, development of more quarries. Write the Postmaster.

**VIRDEN**, on Gopher Creek, Jct. of C.P.R. main line and Pheasant Hills branch, terminus C.N.R. branch line, 48 miles w. of Brandon. Hotel, Balmoral. 4 churches, collegiate institute, public school, fire hall, hospital, 4 elevators (200,000 bush.), 3 banks, town acetylene gas works, 2 machine shops, printing plant and newspaper, creamery, cement works. Alt. 1,444. Pop. \*1,618.

**SPECIAL OPPORTUNITIES.**—Sash and door factory, jewellery store, waterworks, steam laundry, elec. light plant. Free sites and tax exemptions. Write Sec. Bd. Trade.

**WINKLER**, on C.P.R. branch line, 74 miles s.w. of Winnipeg. Hotel, Stanley. Bank, 2 churches (M.B. and Men. Bergthaler), \$12,000 school, 4 elevators, flour mill, telephone, livery stable, auto. livery, bank, 3 lumber cos., billiard hall, furniture store, 2 drug stores, printer, 2 blacksmiths, hardware, 6 general stores. Alt. 888. Pop. \*158.

**SPECIAL OPPORTUNITIES.**—Real estate agency, hospital, creamery, laundry, millinery. Write Sec.-Treas. of Town.

**WINNIPEG**, at confluence of Red River and Assiniboine River. Capital of Manitoba, 60 miles n. of U.S. boundary. Incorporated as a city 1874. On C.P.R., C.N.R., G.T.P., G.N.R. and N.P. Hotels, Royal Alexandra \$3.00 up, Fort Garry \$3.00 up, Empire \$3.00 up, Winnipeg, Leland House \$2, St. Regis \$1.50 up, Seymour \$1.50, Clarendon \$2 up, Strathcona \$1.50 up, and many others. Western headquarters of C.P.R., C.N.R. and G.T.P. Water transportation on Lake Winnipeg and Red River. The largest grain market in the world. The neighborhood supplies wheat and coarse grains, wool, flax, hides, brick clays, glass sands, spruce timber, gypsum, peat, salt, manganese. Civic power, electric, 60,000 h.p. developed from  $\frac{1}{2}$  c. per kilowatt. Winnipeg elec. ry. has 30,000 h.p. developed and 50,000 h.p. under construction. Civic power plant has 60,000

h.p. developed. Winnipeg's wholesale turn-over exceeds \$200,000,000 annually, with an enormous mercantile territory under development. Clearing house returns, \$106,956,720 in 1901; \$2,061,795,257 in 1916. The C.P.R., C.N.R. and G.T.P. shops are located here. Winnipeg has 425 factories, employing over 22,257 hands, including clothing, hats, electrical fixtures, tents, boxes, cement, butter, carriages, cigars, confectionery, wire, flour mills, harness, iron works, jewellery, packing houses, soaps, clothing, wood fixtures, farm traction engines, steam boilers, structural steel works, planing mills, breakfast foods, rolling mills, cabinets, caskets. Value of annual output of manufactured products, \$54,504,000. Building permits for 3 years ending Dec. 31, 1916, \$16,-494,550. Pop. (Dom. Census) 215 in 1870; 42,340 in 1901; 136,035 in 1911; 183,595 in 1918.

**NOTE.**—An abattoir will be erected near the Union Stock Yards.

**SPECIAL OPPORTUNITIES.**—Factories, foodstuffs, footwear, metal goods, hardware, woodenware, flax, and jute goods, linen mills, agricultural implements and machinery, beet sugar works, chemical works, and all lines of industries; banking, loan companies. Write for free information to Sec. Bd. of Trade, Winnipeg, as to manufacturing possibilities in any line of industry.

# Union Bank of Canada

Established 1865

Head Office, Winnipeg

---

PAID-UP CAPITAL..... \$ 5,000,000  
TOTAL ASSETS OVER..... \$153,000,000

---

## BRANCHES IN MANITOBA

Altamont	McAuley	Souris
Angusville	McCreary	Sperling
Baldur	Manitou	Strathclair
Birtle	Melita	The Pas
Boissevain	Minnedosa	Virden
Brandon	Minto	Waskada
Carberry	Morden	Wawanesa
Carman	Morris	Wellwood
Carroll	Nee pawa	Winnipeg
Clan william	Newdale	" Corydon Ave.
Crystal City	Ninga	" Logan Ave.
Cypress River	Oakburn	" North End
Dauphin	Rapid City	" 491 Portage A.
Deloraine	Roblin	" Portage and
Glenboro	Roland	Arlington
Hamiota	Rosebank	" Portage and
Hartney	Russell	Garry
Holland	Sanford	" Sargent Ave.
Killarney	Shoal Lake	" Union Stock
Lowe Farm	Somerset	Yards

LONDON, ENG., OFFICE

6 Princes St., E.C.

West End Branch: Haymarket, S.W.

NEW YORK AGENCY, 49 Wall Street

Managers of the above branches will be pleased to answer enquiries regarding Manitoba.

The London Offices transact every kind of banking business with Canada.

Superintendent of Western Branches,

W. M. CHANDLER,  
Winnipeg.





# MIXED FARMING

Manitoba conditions are ideal for live-stock of all kinds. The richness of Manitoba native grasses and the quality of Manitoba coarse grains combine with climatic advantages and a clamoring market to ensure **SUCCESSFUL PRODUCE**.



