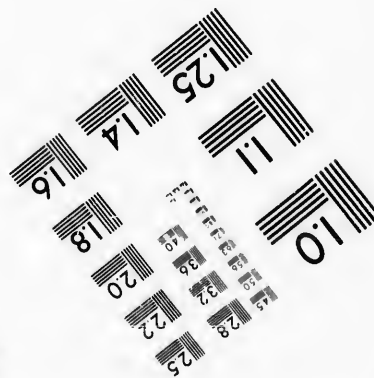
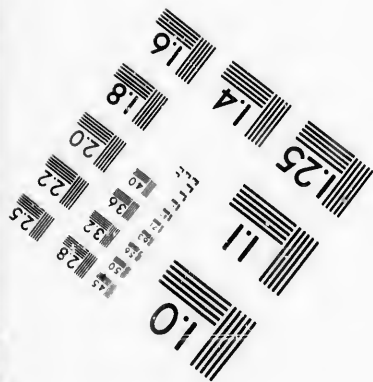
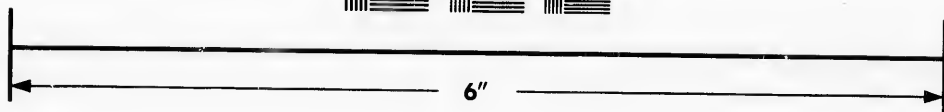
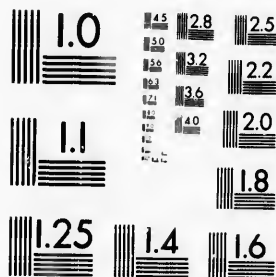


**IMAGE EVALUATION  
TEST TARGET (MT-3)**



**Photographic  
Sciences  
Corporation**

23 WEST MAIN STREET  
WEBSTER, N.Y. 14580  
(716) 872-4503

**CIHM/ICMH  
Microfiche  
Series.**

**CIHM/ICMH  
Collection de  
microfiches.**



Canadian Institute for Historical Microreproductions / Institut canadien de microreproductions historiques

**© 1986**

Technical and Bibliographic Notes/Notes techniques et bibliographiques

The Institute has attempted to obtain the best original copy available for filming. Features of this copy which may be bibliographically unique, which may alter any of the images in the reproduction, or which may significantly change the usual method of filming, are checked below.

L'Institut a microfilmé le meilleur exemplaire qu'il lui a été possible de se procurer. Les détails de cet exemplaire qui sont peut-être uniques du point de vue bibliographique, qui peuvent modifier une image reproduite, ou qui peuvent exiger une modification dans la méthode normale de filmage sont indiqués ci-dessous.

- Coloured covers/  
Couverture de couleur
- Covers damaged/  
Couverture endommagée
- Covers restored and/or laminated/  
Couverture restaurée et/ou pelliculée
- Cover title missing/  
Le titre de couverture manque
- Coloured maps/  
Cartes géographiques en couleur
- Coloured ink (i.e. other than blue or black)/  
Encre de couleur (i.e. autre que bleue ou noire)
- Coloured plates and/or illustrations/  
Planches et/ou illustrations en couleur
- Bound with other material/  
Relié avec d'autres documents
- Tight binding may cause shadows or distortion  
along interior margin/  
La reliure serrée peut causer de l'ombre ou de la  
distorsion le long de la marge intérieure
- Blank leaves added during restoration may  
appear within the text. Whenever possible, these  
have been omitted from filming/  
Il se peut que certaines pages blanches ajoutées  
lors d'une restauration apparaissent dans le texte,  
mais, lorsque cela était possible, ces pages n'ont  
pas été filmées.
- Additional comments:/  
Commentaires supplémentaires:

- Coloured pages/  
Pages de couleur
- Pages damaged/  
Pages endommagées
- Pages restored and/or laminated/  
Pages restaurées et/ou pelliculées
- Pages discoloured, stained or foxed/  
Pages décolorées, tachetées ou piquées
- Pages detached/  
Pages détachées
- Showthrough/  
Transparence
- Quality of print varies/  
Qualité inégale de l'impression
- Includes supplementary material/  
Comprend du matériel supplémentaire
- Only edition available/  
Seule édition disponible
- Pages wholly or partially obscured by errata  
slips, tissues, etc., have been refilmed to  
ensure the best possible image/  
Les pages totalement ou partiellement  
obscurcies par un feuillet d'errata, une pelure,  
etc., ont été filmées à nouveau de façon à  
obtenir la meilleure image possible.

This item is filmed at the reduction ratio checked below/  
Ce document est filmé au taux de réduction indiqué ci-dessous.

10X	12X	14X	16X	18X	20X	22X	24X	26X	28X	30X	32X
						✓					

The copy filmed here has been reproduced thanks to the generosity of:

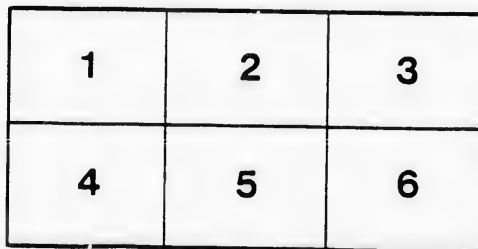
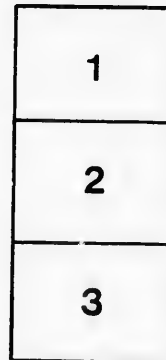
D. B. Weldon Library  
University of Western Ontario  
(Regional History Room)

The images appearing here are the best quality possible considering the condition and legibility of the original copy and in keeping with the filming contract specifications.

Original copies in printed paper covers are filmed beginning with the front cover and ending on the last page with a printed or illustrated impression, or the back cover when appropriate. All other original copies are filmed beginning on the first page with a printed or illustrated impression, and ending on the last page with a printed or illustrated impression.

The last recorded frame on each microfiche shall contain the symbol  $\rightarrow$  (meaning "CONTINUED"), or the symbol  $\nabla$  (meaning "END"), whichever applies.

Maps, plates, charts, etc., may be filmed at different reduction ratios. Those too large to be entirely included in one exposure are filmed beginning in the upper left hand corner, left to right and top to bottom, as many frames as required. The following diagrams illustrate the method:



L'exemplaire filmé fut reproduit grâce à la générosité de:

D. B. Weldon Library  
University of Western Ontario  
(Regional History Room)

Les images suivantes ont été reproduites avec le plus grand soin, compte tenu de la condition et de la netteté de l'exemplaire filmé, et en conformité avec les conditions du contrat de filmage.

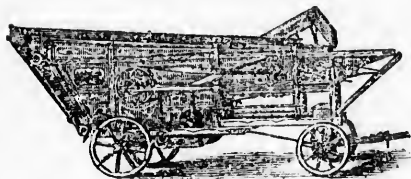
Les exemplaires originaux dont la couverture en papier est imprimée sont filmés en commençant par le premier plat et en terminant soit par la dernière page qui comporte une empreinte d'impression ou d'illustration, soit par le second plat, selon le cas. Tous les autres exemplaires originaux sont filmés en commençant par la première page qui comporte une empreinte d'impression ou d'illustration et en terminant par la dernière page qui comporte une telle empreinte.

Un des symboles suivants apparaîtra sur la dernière image de chaque microfiche, selon le cas: le symbole  $\rightarrow$  signifie "A SUIVRE", le symbole  $\nabla$  signifie "FIN".

Les cartes, planches, tableaux, etc., peuvent être filmés à des taux de réduction différents. Lorsque le document est trop grand pour être reproduit en un seul cliché, il est filmé à partir de l'angle supérieur gauche, de gauche à droite, et de haut en bas, en prenant le nombre d'images nécessaire. Les diagrammes suivants illustrent la méthode.

Price List and Descriptive Circular

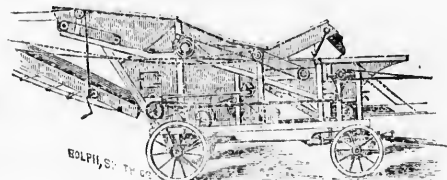
OF




THE DECKER.

REPAIRS

FOR



THE STANDARD.

The Decker  Standard Threshers

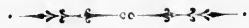
MANUFACTURED BY

MACDONALD MANUFACTURING COMPANY,

STRATFORD, ONTARIO, CANADA.

101

# Price List of Repairs.



## Separate Parts of Horse Power.

Master Wheel .....	\$ 35 00
Large Bevel Wheel (turned rim).....	7 00
Bull Pinion.....	2 00
Line Shaft Pinion, 12 or 13 cogs .....	1 25
Large Traveller under big wheel.....	80
Small Traveller, turned.....	80
Small Traveller pin, turned.....	50
Bevel Wheel Pin (best of steel).....	1 50
Line Shaft without Pinions.....	5 75
Line Shaft box.....	1 50
Coupling Clutch.....	85
Slip Coupling.....	85
Coupling Rings (heavy).....	50
Fork Clutch for Wood Rod.....	1 00
Wood Rod with Clutches.....	6 00
Iron Rod 11½ feet long with Clutch.....	6 00

## Separate Parts of our Patent Safety Gear.

Improved Spmr Wheel.....	4 00
Bevel Wheel.....	3 00

Bevel Pinion.....	2 00
Cylinder Pinion, 16 Cogs, new kind .....	1 25
Cylinder Pinion, 17 Cogs, new kind.....	1 25
Clutch Cup.....	1 25
Gear Clutch.....	1 25
Clutch Spring.....	25
Snap .....	25
Improved Patent Gear, complete.....	25 00

## Separate Parts of "Decker."

Concave Piece, 35 inches long .....	3 60
Concave Piece, 32 inches long.....	2 50
Concave Cheeks, each.....	75
Three-rowed Concave, new kind .....	3 50
Cylinder boxes, not babbited, new kind .....	2 00
Cylinder boxes, babbited e a.....	2 50
Cylinder Teeth, per dozen, best Lowmore or steel.....	1 50
Short Raker Belt .....	5 50
Out, Wheat and Barley Sieves, each .....	3 00
Elevator Boxes.....	50
Pitman Bolt, turned .....	50
Conveyor Shaft, with sections, either grain or tailings .....	6 00
Section for Grain or Tailings Conveyor.....	25
Outside Arm on Rock Shaft.....	1 25

Inside  
Pitman  
Pin fo  
Elevat  
Spout  
Box fo  
Box fo  
Bagge  
Crunk  
Rock  
Barley  
Drivin  
Large  
Disc o  
Brack  
Rotar  
Cylind  
Rotar  
Fan I  
Fan I  
Fan I  
Crunk  
Conve  
After  
Chain  
Eleva  
Eleva  
Eleva  
Rock  
Brack  
Box f  
Box f

	Inside Arm on Rock Shaft .....	75
	Pitman (wooden) to drive Shoe .....	1 25
	Pin for either end of Pitman .....	50
	Elevator Belt with Buckets .....	6 50
	Spout for Grain Conveyor, either side .....	1 25
	Box for Shaft of Grain Conveyor (40) either end .....	1 25
	Box for Shaft of Tailings Conveyor .....	50
2 00	Bagger, complete .....	30 00
1 25	Crank Shaft .....	8 00
1 25	Rock Shaft .....	3 00
1 25	Barley Scourer with Boxes .....	15 00
1 25	Driving Pulley Leathered .....	4 00
25	Large Crank Pulley, 23 in .....	4 00
25	Disc on same .....	1 25
25 00	Bracket for Driving Pulley .....	3 00
	Rotary Drum Pulley, 16 in .....	2 50
	Cylinder Pulley (5 in.) turned .....	2 00
	Rotary Drum Pulley, 10 $\frac{3}{4}$ in .....	1 00
3 6)	Fan Pulley, large, 10in .....	1 00
2 50	Fan Pulley, medium, 6in .....	75
75	Fan Pulley, small, 4in .....	50
3 50	Crank Shaft Pulley, small .....	1 00
2 00	Conveyor Pulley .....	75
2 50	After Rake Pulley, 7 $\frac{1}{2}$ in .....	75
1 50	Chain Pulley, Wood .....	75
5 50	Elevator Pulley (on Rotary Drum) .....	75
3 00	Elevator Pulley, top .....	75
50	Elevator Bracket .....	75
50	Elevator Stand .....	75
6 00	Rock Shaft Box -new -double -ea .....	2 00
25	Bracket for upper Deck, each .....	1 00
1 25	Box for Under Hanger, front end .....	50
	Box for the Top Deck, front end .....	50

	Box for Under Deck, rear end .....	30
	Straw Carrier Stands for end of sill ea .....	50
	Straw Carrier Hinges, per pair .....	25

### Separate Parts of "Standard."

	Grain Belt, best Cotton Duck .....	30 60
	Picker Box, New Style .....	50
	Canvas Shaft Boxes .....	50
	Short Raker, Slat Boxes .....	50
	Picker Complete, with Boxes .....	3 50

All other repairs, see under "Separate Parts of 'Decker.'"

### Repairs.

We keep a large and complete assortment of Repairs always on hand. We repair all kinds and makes of Threshing Machines and Agricultural Implements. Orders for Repairs either by mail or telegraph will receive prompt attention and goods forwarded by first express leaving. Our facilities for shipping are unequalled, as there are trains leaving Stratford for the north, south, east and west, all hours of the day.

**CAUTION.**—You will save time and money by being careful that you get Genuine Repairs for your machines. Various persons throughout the country are making repairs for our Threshers from patterns from our castings. They are made of poor, inferior iron, and are necessarily imperfect. Don't buy them, they injure you, and also injure the reputation of our machines.

### Directions for Ordering Repairs.

In ordering Repairs describe the articles wanted, as they are named in this price list. Give plain directions how and where to send the Repairs. Give your Name and Post Office. Give width of Cylinder and say whether Steam or Horse Power.

19  
by 30  
1873

