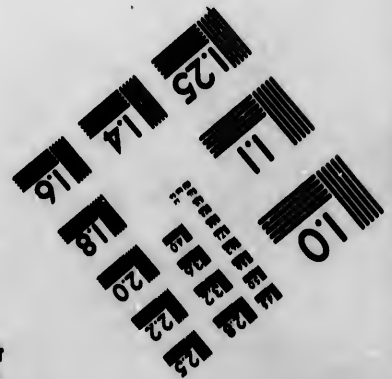
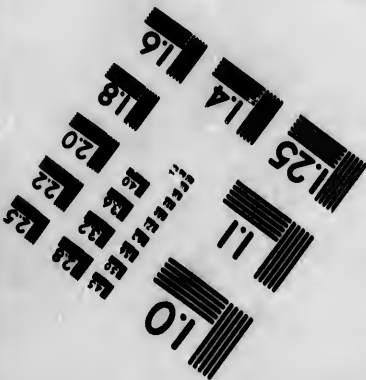
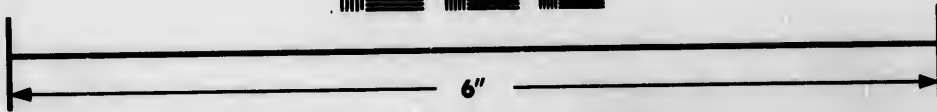
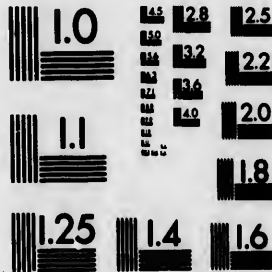


**IMAGE EVALUATION
TEST TARGET (MT-3)**



**Photographic
Sciences
Corporation**

23 WEST MAIN STREET
WEBSTER, N.Y. 14580
(716) 872-4803

12.8
13.2
12.2
12.0
8

**CIHM/ICMH
Microfiche
Series.**

**CIHM/ICMH
Collection de
microfiches.**



Canadian Institute for Historical Microreproductions / Institut canadien de microreproductions historiques

110
01

© 1984

Technical and Bibliographic Notes/Notes techniques et bibliographiques

The Institute has attempted to obtain the best original copy available for filming. Features of this copy which may be bibliographically unique, which may alter any of the images in the reproduction, or which may significantly change the usual method of filming, are checked below.

L'institut a microfilmé le meilleur exemplaire qu'il lui a été possible de se procurer. Les détails de cet exemplaire qui sont peut-être uniques du point de vue bibliographique, qui peuvent modifier une image reproduite, ou qui peuvent exiger une modification dans la méthode normale de filmage sont indiqués ci-dessous.

- Coloured covers/
Couverture de couleur
- Covers damaged/
Couverture endommagée
- Covers restored and/or laminated/
Couverture restaurée et/ou pelliculée
- Cover title missing/
Le titre de couverture manque
- Coloured maps/
Cartes géographiques en couleur
- Coloured ink (i.e. other than blue or black)/
Encre de couleur (i.e. autre que bleue ou noire)
- Coloured plates and/or illustrations/
Planches et/ou illustrations en couleur
- Bound with other material/
Relié avec d'autres documents
- Tight binding may cause shadows or distortion along interior margin/
La reliure serrée peut causer de l'ombre ou de la distortion le long de la marge intérieure
- Blank leaves added during restoration may appear within the text. Whenever possible, these have been omitted from filming/
Il se peut que certaines pages blanches ajoutées lors d'une restauration apparaissent dans le texte, mais, lorsque cela était possible, ces pages n'ont pas été filmées.
- Additional comments:
Commentaires supplémentaires:

- Coloured pages/
Pages de couleur
- Pages damaged/
Pages endommagées
- Pages restored and/or laminated/
Pages restaurées et/ou pelliculées
- Pages discoloured, stained or foxed/
Pages décolorées, tachetées ou piquées
- Pages detached/
Pages détachées
- Showthrough/
Transparence
- Quality of print varies/
Qualité inégale de l'impression
- Includes supplementary material/
Comprend du matériel supplémentaire
- Only edition available/
Seule édition disponible
- Pages wholly or partially obscured by errata slips, tissues, etc., have been refilmed to ensure the best possible image/
Les pages totalement ou partiellement obscurcies par un feuillet d'errata, une pelure, etc., ont été filmées à nouveau de façon à obtenir la meilleure image possible.

This item is filmed at the reduction ratio checked below/
Ce document est filmé au taux de réduction indiqué ci-dessous.

10X	14X	18X	22X	26X	30X
<input type="checkbox"/>	<input type="checkbox"/>	<input checked="" type="checkbox"/>	<input type="checkbox"/>	<input type="checkbox"/>	<input type="checkbox"/>
12X	16X	20X	24X	28X	32X

The copy filmed here has been reproduced thanks to the generosity of:

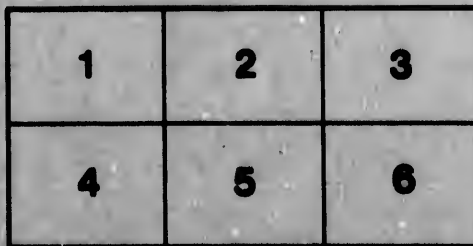
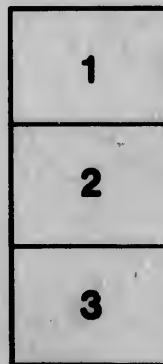
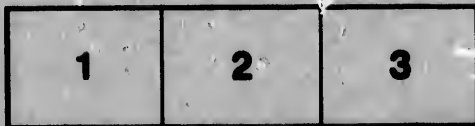
University of British Columbia Library

The images appearing here are the best quality possible considering the condition and legibility of the original copy and in keeping with the filming contract specifications.

Original copies in printed paper covers are filmed beginning with the front cover and ending on the last page with a printed or illustrated impression, or the back cover when appropriate. All other original copies are filmed beginning on the first page with a printed or illustrated impression, and ending on the last page with a printed or illustrated impression.

The last recorded frame on each microfiche shall contain the symbol \rightarrow (meaning "CONTINUED"), or the symbol ∇ (meaning "END"), whichever applies.

Maps, plates, charts, etc., may be filmed at different reduction ratios. Those too large to be entirely included in one exposure are filmed beginning in the upper left hand corner, left to right and top to bottom, as many frames as required. The following diagrams illustrate the method:



L'exemplaire filmé fut reproduit grâce à la générosité de:

University of British Columbia Library

Les images suivantes ont été reproduites avec le plus grand soin, compte tenu de la condition et de la netteté de l'exemplaire filmé, et en conformité avec les conditions du contrat de filmage.

Les exemplaires originaux dont la couverture en papier est imprimée sont filmés en commençant par le premier plat et en terminant soit par la dernière page qui comporte une empreinte d'impression ou d'illustration, soit par le second plat, selon le cas. Tous les autres exemplaires originaux sont filmés en commençant par la première page qui comporte une empreinte d'impression ou d'illustration et en terminant par la dernière page qui comporte une telle empreinte.

Un des symboles suivants apparaîtra sur la dernière image de chaque microfiche, selon le cas: le symbole \rightarrow signifie "A SUIVRE", le symbole ∇ signifie "FIN".

Les cartes, planches, tableaux, etc., peuvent être filmés à des taux de réduction différents. Lorsque le document est trop grand pour être reproduit en un seul cliché, il est filmé à partir de l'angle supérieur gauche, de gauche à droite, et de haut en bas, en prenant le nombre d'images nécessaire. Les diagrammes suivants illustrent la méthode.

BR

CO

Emily Summonds

1862

CATALOGUE
OF
BRITISH, COLONIAL, AND FOREIGN
Postage Stamps.

BY
MOUNT BROWN.

SECOND EDITION,
COMPRISING NEARLY THIRTEEN HUNDRED VARIETIES.

PRICE ONE SHILLING.

Post free, thirteen stamps.

LONDON:
F. PASSMORE, 124, CHEAPSIDE,
UNDER THE TREE.
1862.

[Entered at Stationers' Hall.]

LONDON:
PRINTED BY F. PASSMORE, 124, CHEAPSIDE.

P R E F A C E.

THE very favourable reception which my Catalogue has received, and the increasing demand for it, has induced me to publish a second edition. Great improvements and additions are made, owing to the continued kind assistance of many correspondents; and I trust this issue will afford as much satisfaction as the last.

I shall still esteem the favour of a description of any omissions; whether old stamps, or those issued subsequent to this compilation; as I intend from time to time (say every six months, or as occasion may demand), to print supplementary sheets similar in size to the Catalogue, at a small extra charge. It would otherwise be impossible to keep pace with the many changes constantly taking place in the form or colour of stamps of different countries; for instance, it is already decided to vary those of Switzerland, whilst France will shortly add a 2 centime and 4 centime stamp to the list.

The following particulars may be interesting. Posts or couriers were established at a very early period, for the safe and speedy transmission of public intelligence. They originated in the regular couriers established by Cyrus, who erected post-houses throughout the kingdom of Persia. An institution under the name of "Cursus publicus" was established at Rome by Augustus.

In England, the plan commenced in the reign of Edward IV., in 1481, when riders on post-horses went stages of the distance of twenty miles from each other in order to procure the king the earliest intelligence of the events that passed during the war with the Scots. The first chief postmaster was Mr. Thomas Randolph, appointed by Queen Elizabeth in 1581, and the office of foreign postmaster was created by James I. In 1635, Charles I. erected a letter-office for England and Scotland, but this extended only to a few of the principal roads, and the postmasters on each road were required to furnish horses for the conveyance of letters at the rate of $2\frac{1}{2}$ d. per mile.

At length, in 1649, Mr. Edward Prideaux, Attor-

ney-General for the Commonwealth, instituted a weekly conveyance of letters to all parts of the kingdom, and in 1657 the post-office was placed nearly on its present footing, the rate of postage then adopted continuing till the reign of Queen Anne. Even as late as 1735, the post was only transmitted three days a-week between Edinburgh and London, and on one occasion, the *metropolis only sent a single letter*, which was for a Scotch banker, named Ramsay.

Previous to the introduction of a uniform penny rate; the postage was charged on a sliding scale, increasing in proportion to the distance. Thus, a letter under eight miles was *2d.*, under fifteen, *4d.*, and so on, and differential rates were used for England, Scotland, and Ireland. However, in 1837, Sir Rowland Hill broached his plan of "Penny Postage," which was adopted after investigation by a Committee of the House of Commons. The new Postage Law, by which a uniform rate of *4d.* per letter, was tried as an experiment, came into operation December 5th, 1839; and the uniform rate of *1d.* per letter of $\frac{1}{2}$ oz. weight, commenced in January, 1840.

The General Post-office in London, was originally established in Cloak Lane, near Dowgate Hill, whence it was transferred to the Black Swan, in Bishopsgate Street. On occasion of the great fire of 1666, it was removed to Brydges Street, Covent Garden, and afterwards to Sir Robert Viner's mansion, in Lombard Street, where it continued until 1829, when it was transferred to St. Martin's-le-Grand. It now occupies the site of an ancient college and sanctuary. The building was commenced in 1825, from designs by R. Smirke Esq., and completed in 1829. The street letter-boxes were erected in March 1855, and the first one placed at the corner of Fleet Street and Farringdon Street.

The postage-stamp had its origin in England, and for ten years alone made use of it. France adopted it in 1849, the Tour and Taxis Office (Germany) in 1850, and it is now in use over the whole world. The distance over which Mails are at present conveyed within the United Kingdom by railways, mail-carts, steam-packets, &c., is about 150,000 miles *per day*, or more than six times round the earth; and the number of letters delivered annually 593 millions,

being sufficient, if placed end to end, to reach from London to Birmingham 1830 times.

Such is a slight sketch of this Institution. In conclusion, I would suggest that collectors furnish themselves with *two copies* of this Catalogue; one to keep by them for reference; the other (with a line drawn under the stamps *not wanted*), to forward to their friends, that they may see what is required—the book will go by book-post for 1*d.*, and thus save much trouble, time, and expense. I shall be glad to exchange postage-stamps, or give any information about them, that lies in my power; but persons wishing for a reply, must enclose a postage-stamp for that purpose.

M. BROWN.

124, CHEAPSIDE,

16th June, 1862.

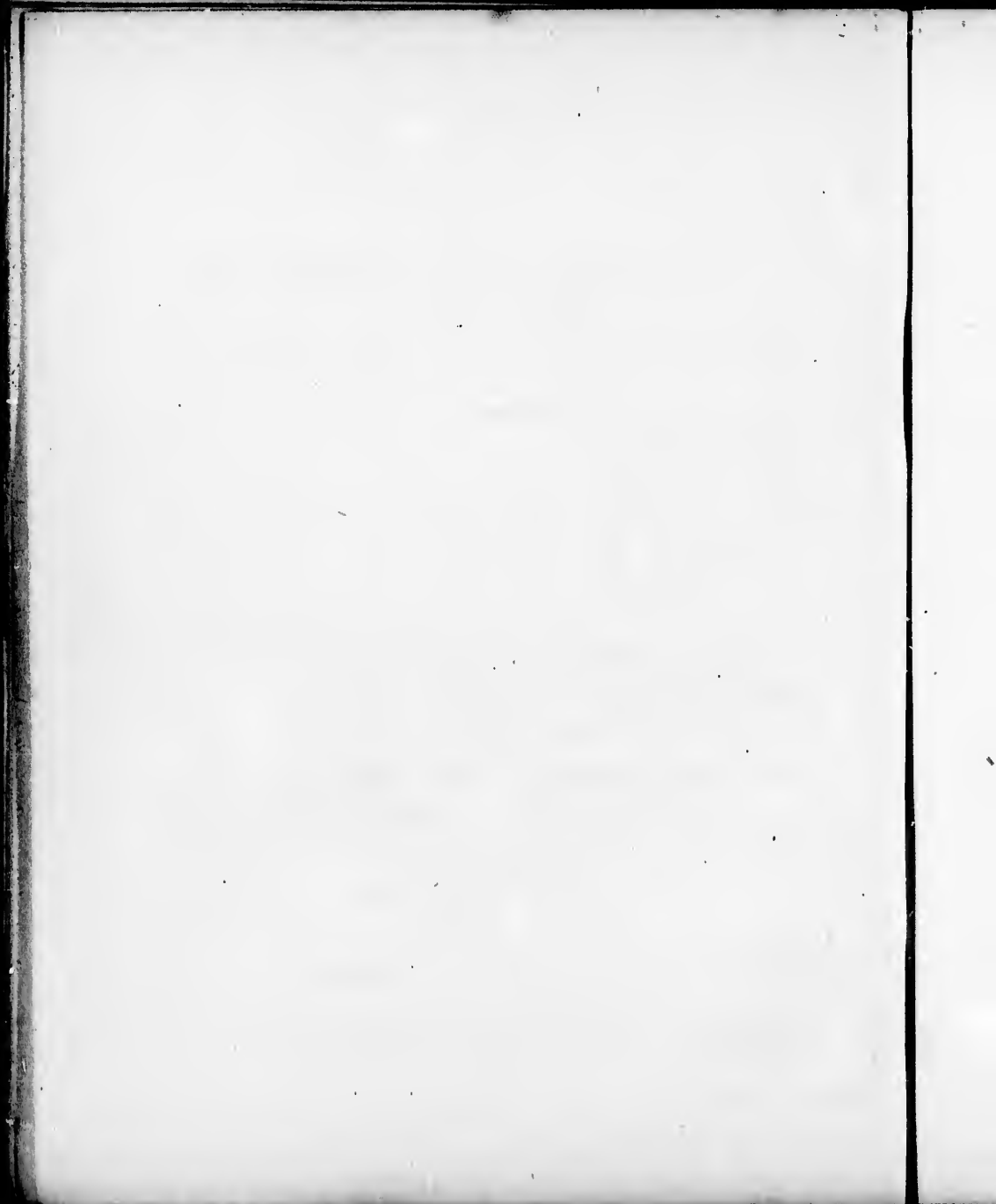
ABBREVIATIONS.

Col.	Coloured.
Imp.	Impression.
Rect.	Rectangular.
Obl.	Oblong.
Oct.	Octagonal.

The word "*Name*" signifies that the designation of the country is impressed on the stamp. The word "*Essay*" comprehends those stamps having either accidental difference from those used, or that were printed for issue, but never circulated.

Where not expressly mentioned, the coloured impressions are on white paper.

of
ed
er
re
ed



CATALOGUE OF BRITISH, COLONIAL, AND
FOREIGN POSTAGE STAMPS.

Argentine Confederation.

ADHESIVE STAMPS.

1860.—*Name, Arms (rising sun, &c.). "Confederation Argentina" above, value below. Col. imp. rect., small Greek bordering.*

5 centav. carmine.

1861.—*Similar device to last, with value, smaller and bordering larger.*

5 centav. red, 10 c. green, 15 c. blue.

1862.—*Name, Arms (cap of Liberty on pole, &c.), in small oval, wreathed, encircled by "Republica Argentina." Col. imp., rect.*

5 centavos rose, 10 c. green, 15 c. blue.

VARIETY.

Head to left; inscription "Corrientes" above. Col. imp. on blue paper. Rect.

1 real, M.C. indigo.

Austria.

ADHESIVE STAMPS.

1850.—*Arms (double eagle, &c.), displayed on shield. col. imp. rect.*

1 kreuzer yellow, 2 kr. black, 3 ks. red, 6 kr. brown, 9 kr. blue.

1858.—*Head of Emperor in white relief to left. Col. imp., rect.*

2 kr. yellow, 2 kr. orange, 3 kr. black, 3 kr. green, 5 kr. red
10 kr. brown, 15 kr. blue.

1861.—*Head of Emperor in white relief to right. Col. imp., oval.*

2 kr. yellow, 3 kr. green, 5 kr. red, 10 kr. brown, 15 kr. blue.

COMPLEMENTARY STAMPS.

1850.—*St. Andrew's Cross in colour on white ground, (hand paper). Oblong.*

Yellow, black, red, brown, blue.

1858.—*St. Andrew's Cross in white relief on coloured ground (machine paper). Oblong.*

Yellow, orange, black, green, red, brown, blue.

Similar device to last, each colour having from 1 to 4 dots in white relief.

Yellow, 1, 2, 3, 4 dots; orange, 1, 2, 3, 4 dots; black, 1, 2, 3, 4 dots;
green, 1, 2, 3, 4 dots; red, 1, 2, 3, 4 dots; brown, 1, 2, 3, 4 dots; blue,
1, 2, 3, 4 dots.

St. Andrew's Cross in white relief on col. ground, with white bordering. Oblong.

Yellow, black, green, red, brown, blue.

l.

a

l.

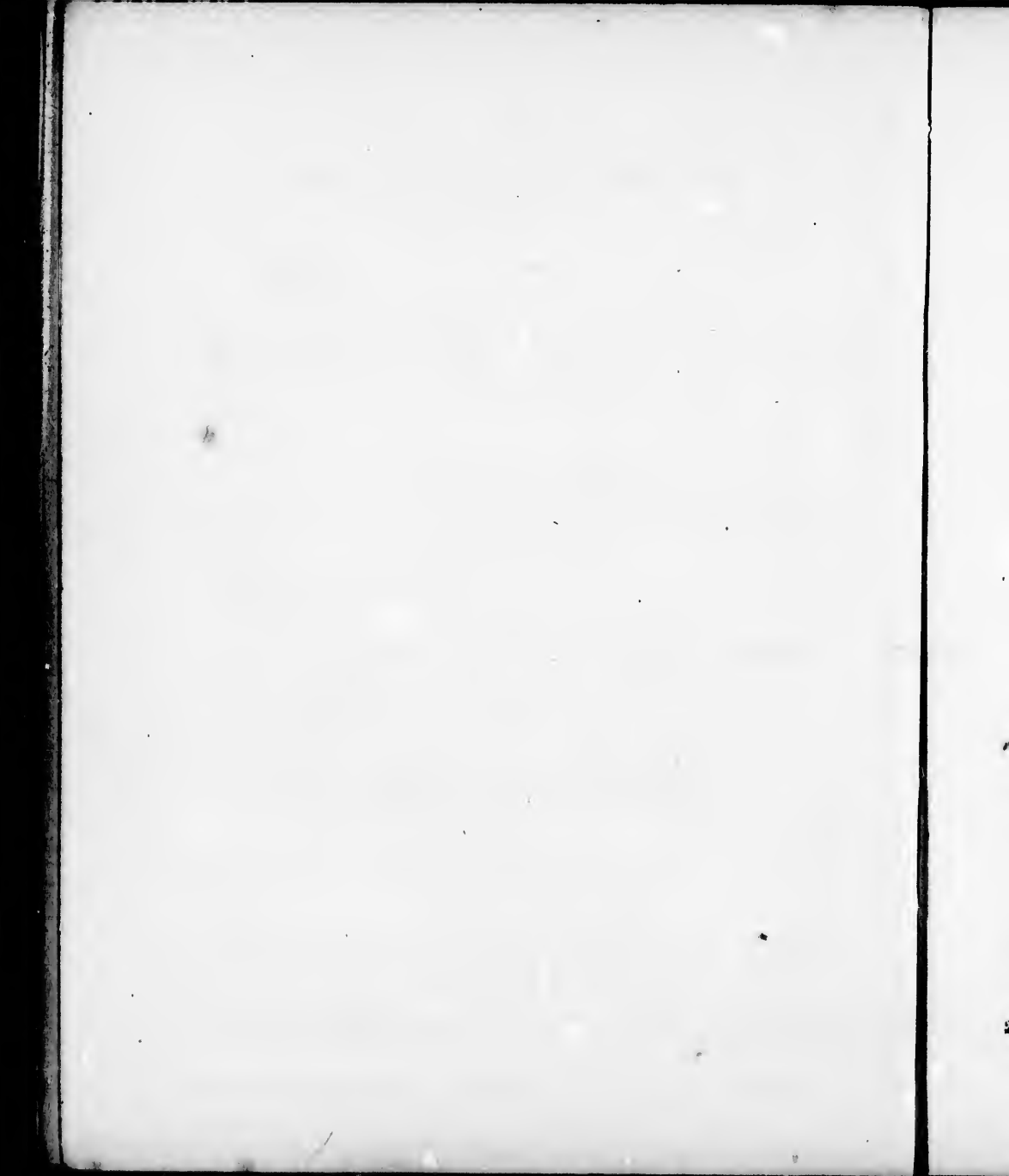
ad,

red

to 4

lots ;
blue,

und,



St. Andrew's Cross in colour on white ground, on machine paper, perforated. Oblong.

Blue.

GAZETTE STAMPS.

1857.—*Zeitungs-stempel. Head of Mercury to left. Col. imp., square.*

Yellow, pink, blue.

1858.—*Head of Emperor in white relief to left, in square. Col. imp., rect.*

Blue, Lavender.

1861.—*Head of Emperor in white relief to right, in oval. Col. imp., rect.*

Lavender.

N.B.—The above are exclusively for interior postage.

Kais-Kon Zeitungs-stempel, Arms (double eagle displayed), col. imp., square.

1 kreuzer blue, 1 kr. black, 2 kr. red, 2 kr. brown, 2 kr. green, 4 kr. red, 4 kr. brown.

ENVELOPE STAMPS.

1861.—*Head of Emperor in white relief to right. Col. imp., oval.*

3 kreuzer green, 5 kr. red, 10 kr. red-brown, 15 kr. blue, 20 kr. orange, 25 kr. dark brown, 30 kr. violet, 35 kr. light brown.

Austrian Italy.

ADHESIVE STAMPS.

1850.—*Arms (double eagle, &c.), displayed on shield.*
Col. imp., rect.

5 cents..yellow, 10 c. black, 15 c. red, 30 c. brown, 45 c. blue,

1858.—*Head of Emperor in white relief to left.*
Col. imp., rect.

2 soldi yellow, 3 sol. black, 5 sol. red, 10 sol. brown, 15 sol. blue.

1861.—*Head of Emperor in white relief to right.*
Col. imp., oval.

5 soldi red.

ENVELOPE STAMPS.

1861.—*Head of Emperor in white relief to right.*
Col. imp., oval.

3 soldi green, 5 sol. red, 10 sol. brown, 15 sol. blue, 20 sol. orange,
25 sol. dark brown, 30 sol. violet, 35 sol. pale brown.

N.B.—Since the annexation of Lombardy to the Kingdom of Italy in
1859, the above are used only in Venetia.

Baden.

ADHESIVE STAMPS.

1850.—*Name, figure indicating value. Black imp.*
square.

1 kreuzer buff, 3 kr. drab, 3 kr. yellow, 6 kr. green, 9 kr. white.

ld.

t.

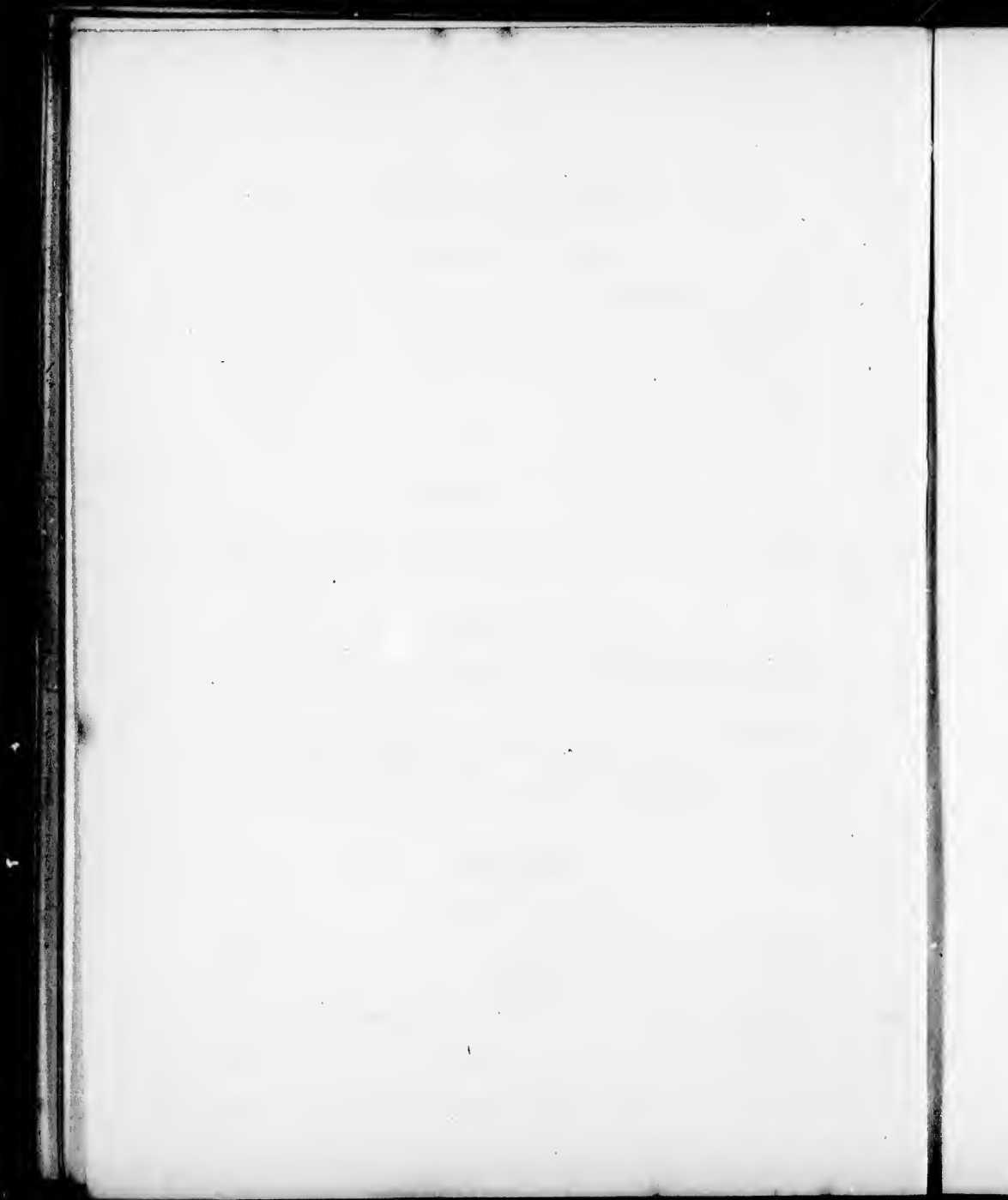
ht.

ht.

ange,

ly in

imp.



1855.—*Similar device.*

1 kreuzer white, 3 kr. green, 3 kr. blue, 6 kr. yellow, 9 kr. pink.

1860.—*Name, arms (shield and crown supported by winged griffins). Col. imp., square.*

1 kreuzer black, 3 kr. blue, 6 kr. red, 9 kr. rose.

1862.—*Similar device.*

3 kr. pink, 6 kr. blue, 9 kr. stone.

N.B.—The shades of colour vary in 3 and 6 kr.

ENVELOPE STAMPS.

1857.—*Head of Grand Duke in white relief to right. Col. imp. oval.*

3 kreuzer blue, 6 kr. yellow, 9 kr. rose, 12 kr. brown, 18 kr. red.

1862.—*Similar device.*

3 kreuzer rose, 6 kr. blue, 9 kr. stone.

Bahamas.

ADHESIVE STAMPS.

1861.—*Name, and interinsular postage. Head of Queen Victoria, crowned. Col. imp., rect.*

1d. lake-red.

1862.—*Name, Head of Queen Victoria, crowned. Col. imp., rect.*

4d. rose, 6d. grey.

Barbados.

ADHESIVE STAMPS.

— *Name, Britannia sitting, value not indicated. Col. imp. on blue paper, rect.*

Red, blue.

— *Similar device. Col. imp., on white paper, rect.*

Red, blue, light green, dark green.

1862.—*Similar device, value indicated.*

6d. red, 1s. black.

Babaria.

ADHESIVE STAMPS.

Name, figure in a square, indicating value. Black imp., square.

1 kreuzer white, 3 kr. blue, 6 kr. violet, 9 kr. red.

Name, figure in a circle indicating value. Black imp., on coloured paper. Square.

1 kreuzer pink, 3 kr. blue, 6 kr. marone, 9 kr. dark green, 12 kr. red.

1851.—*Similar to last. Coloured imp. on white paper. Rect.*

1 kreuzer rose, 3 kr. blue, 6 kr. marone, 9 kr. green, 12 kr. red, 18 kr. yellow.

1862.—*Similar to last.*

3 kr. pink, 6 kr. blue, 9 kr. stone.

ol.

ct.

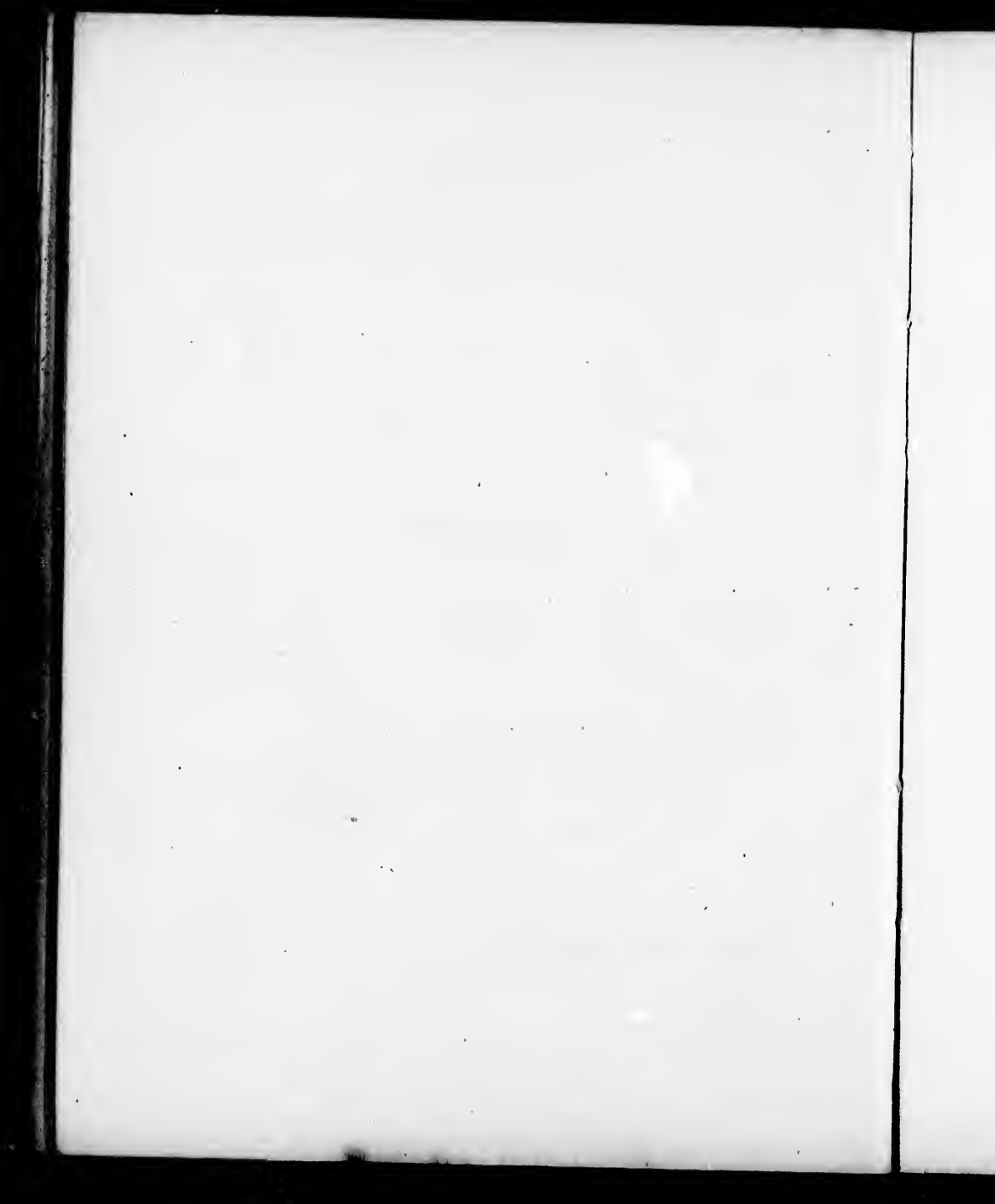
o.,

o.,

d.

rr

red.



Belgium.

ADHESIVE STAMPS.

1849.—*Head of King. Col. imp. rect., value in white letters.*

10 cents. dark brown, 20 c. blue.

1850-62.—*Head. of King, in oval. Col. imp. rect., value in coloured letters.*

1 centime green, 10 c. brown, 20 c. blue, 40 c. red.

ESSAY.

Similar device.

10 cents. blue.

Bergedorf.

ADHESIVE STAMPS.

1860.—*Name, arms (demi-eagle and demi-castle encircled) Black imp. on coloured paper. Square —the dimension of stamp increasing with its value.*

$\frac{1}{2}$ schillinge violet, 3 sch. black.

1861.—*Similar device.*

$\frac{1}{2}$ schillinge indigo, 1 sch. white, $1\frac{1}{2}$ sch. yellow, 3 sch. violet on rose, 4 sch. fawn.

Brazil.

ADHESIVE STAMPS.

Large Roman figures in oval indicating value. Black imp., square.

30, 60, 90 (reis).

*Italic figures indicating value. Black imp., oblong.
Cut Corners.*

10, 30, 60, 90, 180, 300, 600 (reis).

1861.—*Roman figures indicating value. Black imp.,
oblong.*

10, 20, 30, 60, 90, 180, 300, 600 (reis).

Similar to last. Col. imp.

10 blue, 30 blue, 280 vermillion, 430 orange (reis).

Bremen.

ADHESIVE STAMPS.

1855.—*Name, arms (key) in shield, value each side in
figures. Black imp., rect.*

Stadt post-amt, 3 grote blue (for the town of Bremen). 5 grote rose,
7 grote yellow.

Name, arms (key) in oval, col. imp., rect.

5 s. gr. green.

1861.—*Name, arms (key) in oval, surrounded by wavy
border. Black imp., rect.*

10 grote black.

ENVELOPE STAMP.

1861.—*Name, arms (crown and key) in shield, value
not indicated and struck with hand-stamp. Oval.*

Stadt post-amt (for the town of Bremen).

The value is one grote.

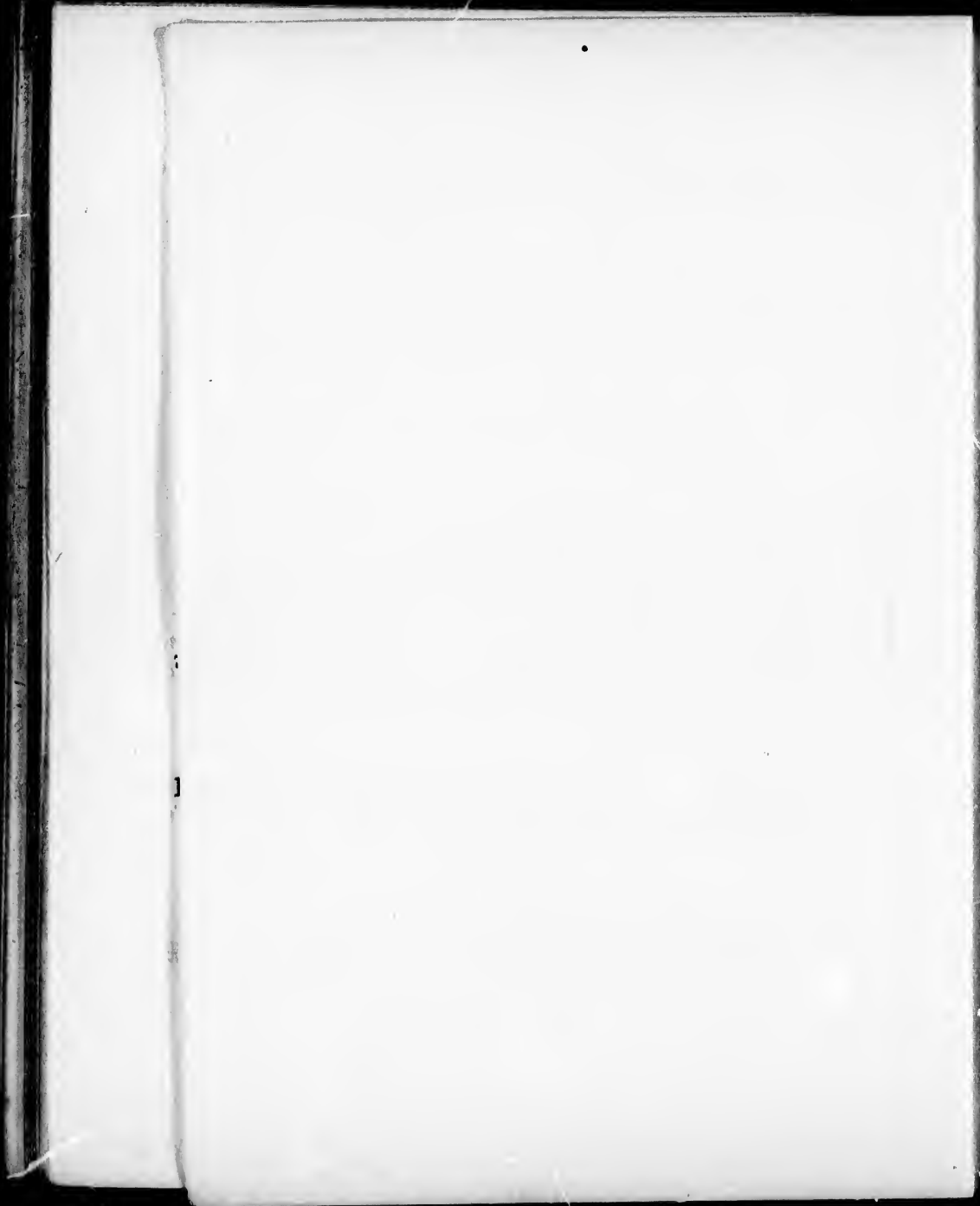
g.

h.

i.

j.

k.



British Columbia and Vancouver's Island.

ADHESIVE STAMP.

1861.—*Name, head of Queen Victoria to left. Col.
imp., rect.*

2½d. pink.

British Guiana.

ADHESIVE STAMPS.

*Name, vessel in shield, value above, and Motto "DAMUS
PATIMUS QUE VICISSIM" below, date not indicated.
Black imp. on coloured paper, large rect.*

1 cent magenta, 4 cents smalt blue.

*Name, vessel in oblong. "DAMUS PETIMUS" above, and
"QUE VICISSIM" below. Black imp. on coloured
paper. Oblong.*

4 cents magenta.

1853.—*Name, vessel in oval, encircled with "DAMUS
PETIMUS QUE VICISSIM," date indicated. Col.
imp., rect.*

1 cent. red, 4 c. blue.

1860.—*Name, vessel in garter and motto as last, date
indicated. Col. imp., rect.*

1 cent rose, 1 c. brown, 2 c. red, 4 c. blue, 8 c. flesh, 8 c. pink.

12 c. pearl grey, 12 c. lilac, 24 c. green.

ESSAYS.

Similar device to stamps bearing same dates.

1853.—1 cent black.

1860.—1 cent black.

Brunswick.

ADHESIVE STAMPS.

1852.—*Name, arms (horse and crown) in oval. Col. imp., oblong.*

1 silb. gr. rose, 2 s. gr. blue, 3 s. gr. vermilion.

1854.—*Similar to last. Black imp., oblong.*

‡ silb. gr. brown, $\frac{1}{2}$ s. gr. white, 1 s. gr. yellow, 1 s. gr. orange.
2 s. gr. dark blue, 3 s. gr. pink, 3 s. gr. light brown.

1860.—*Crown over value, in oval. Black imp., small square.*

4-4ths gute gr. brown.

ENVELOPE STAMPS.

1860.—*Arms (horse and crown) in white relief. Col. imp., oval.*

1 silber groschen yellow, 2 s. gr. blue, 3 s. gr. rose.

Buenos Ayres.

ADHESIVE STAMPS.

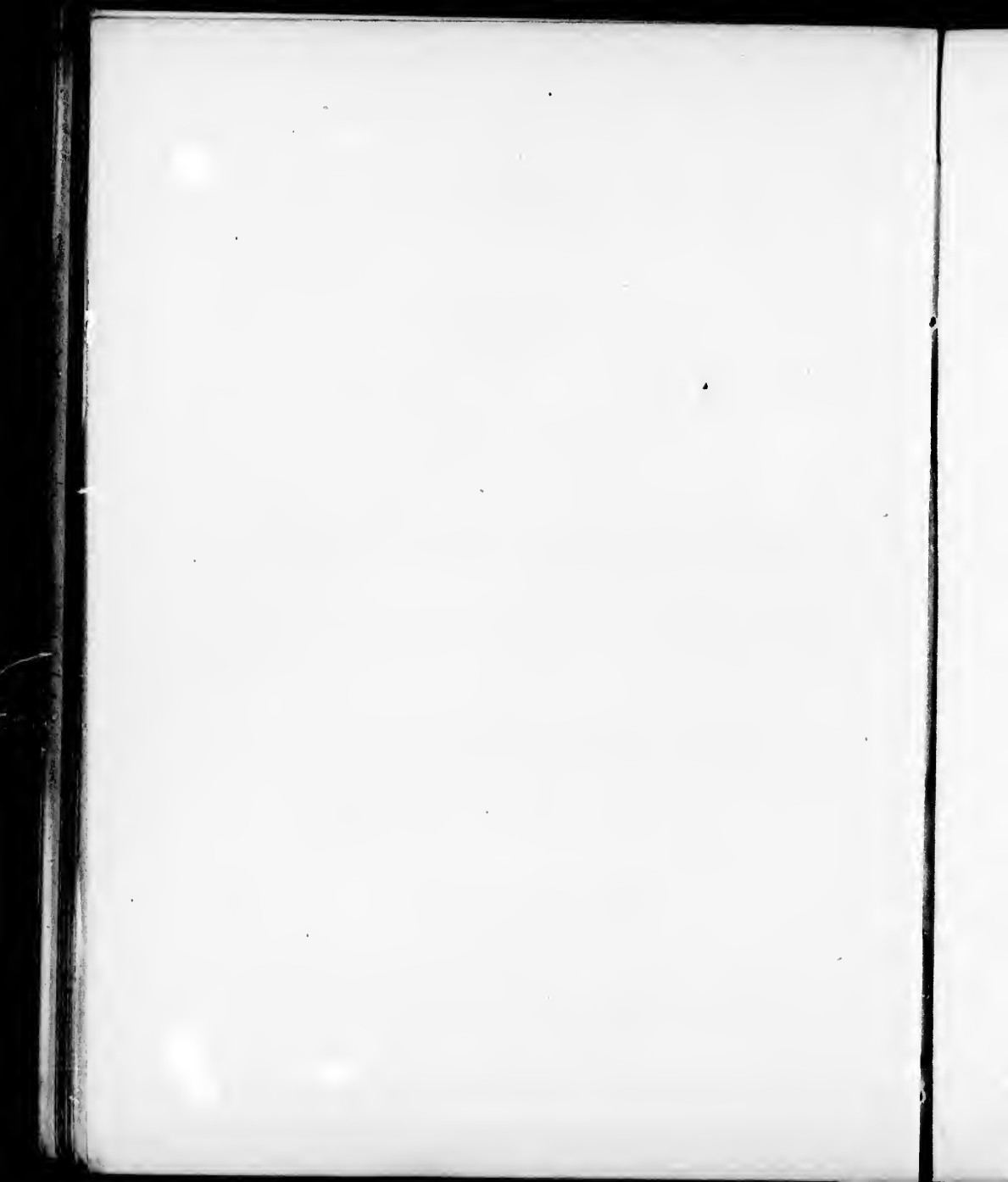
Name, steamship in oval. Col. imp., oblong.

1 peso blue, 2 pesos blue, 3 pesos green, 4 pesos red, 5 pesos brown.

Col.

all

Col.



VARIETY.

Similar device to last.

1 peso brown, 4 ps. brown, 5 ps. yellow.

1861.—*Name, head of Liberty in circle. Col. imp., oblong.*

4 sales green, 1 peso blue, 2 ps. scarlet.

Canada.

ADHESIVE STAMPS.

1856.—*Name, various effigies. Col., imp., rect.*4d. rose (head of Queen Victoria). 6d. black (bust of Prince Albert)
6d. sterling. 7½ c. (bust of Queen Victoria). 10d. blue (bust of Cartier)
12d. black (bust of Queen Victoria).*Name, beaver under crown. Col. imp., oblong.*

3d. vermilion.

1860.—*Name, various effigies. Col. imp. rect.*1 cent rose (head of Queen Victoria). 10d. c. black (bust of Prince
Albert). 12½ c. green (bust of Queen Victoria). 17 c. blue (bust of
Cartier).*Name, beaver under crown. Col. imp., oblong.*

5 cents vermilion.

ENVELOPE STAMPS.

1861.—*Name, head of Queen Victoria to left, in white relief. Col. imp., oval.*

5 cents vermilion, 10 c. marone.

Cape of Good Hope.

ADHESIVE STAMPS.

Name, Goddess of Hope and Anchor. Col. imp., on white paper, triangular.

1d. red, 4d. blue, 6d. lilac, 1s. green.

Similar device. Col. imp., on bluish paper.

1d. crimson, 4d. blue-black.

VARIETY.

Similar to last, but printed with wood-block.

1d. red, 4d. light blue, 4d. dark blue, 4d. red.

Ceylon.

ADHESIVE STAMPS.

1857.—*Name, head of Queen Victoria to left. Col. imp., rect.*

½d. lilac (on glazed paper), 1d. blue, 2d. green, 5d. red-brown.
6d. chocolate-brown, 6d. violet-brown, 10d. red, 1s. pale-violet.

Similar device to last. Oct.

4d. rose-lake, 8d. marone, 9d. brown, 1s. 9d. green, 2s. blue.

ENVELOPE STAMPS.

1861-2.—*Name, head of Queen Victoria to left, in white relief. Col. imp.*

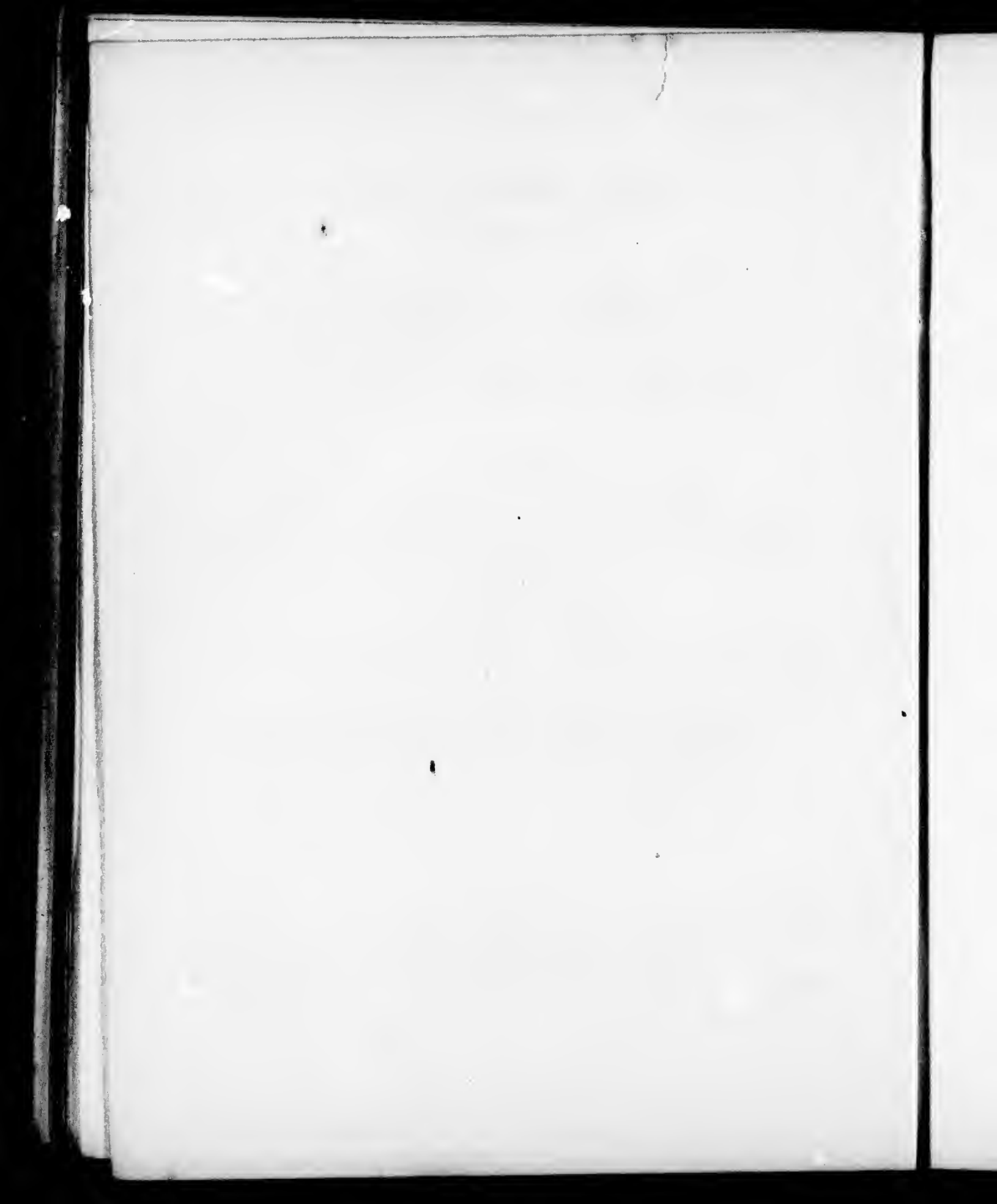
1d. blue oval, 2d. green oval, 4d. pink oval, 5d. brown oval.
6d. chocolate round, 8d. chocolate oct., 9d. chocolate rect., 1s. yellow round.
1s. 9d. green rect, 2s. blue oct.

on

Col.

t, in

round.



Chili.

ADHESIVE STAMPS.

1860-2.—*Name, head to left. Col. imp., rect.*
1 centavo yellow, 5 c. red, 10 c. blue, 20 c. dark-green.

Similar device, on bluish paper.
5 c. brown, 10 c. blue.

ESSAY.

5 centavos black.

Confederate States of America.

ADHESIVE STAMPS.

NEW ORLEANS.

1861.—*Figure indicating value in centre, encircled by
"New Orleans Post-Office," and bearing
the name of J. L. Riddell at top and bottom.*
Col. imp., rect.

2 cents blue, 5 c. brown.

NASHVILLE.

*Name, stars and figure indicating value in oval, encir-
cled by "W. D. McNish, P.M., Tenn." Col. imp.,
rect.*

5 cents crimson.

CONFEDERATE STATES.

1862.—*Name, head of Jefferson Davis to right, in oval.*
Col. imp., rect.

5 cents black, 5 c. blue, 5 c. green (larger size).

Name, head of Calhoun to right, in oval. Col. imp.,
rect.

1 cent orange, 1 c. yellow.

Denmark.

ADHESIVE STAMPS.

1852.—*Value encircled. Col. imp., square.*

2 rigsbank skilling blue.

Arms (crown above crossed swords and sceptre) en-
circled with wreath. Col. imp., square.

4 rbs. cinnamon.

1860.—*Arms (crown above crossed swords and sceptre)*
encircled with wreath, dotted ground. Col. imp.,
square.

2 s. blue, 4 s. brown, 8 s. green, 16 s. lilac.

Similar to last. Wavy ground.

4 s. brown, 8 s. green.

ESSAYS.

Head of Mercury to left, in circle. Brown imp., square.

4 R.B.S. (1½ sch. c.)

al.

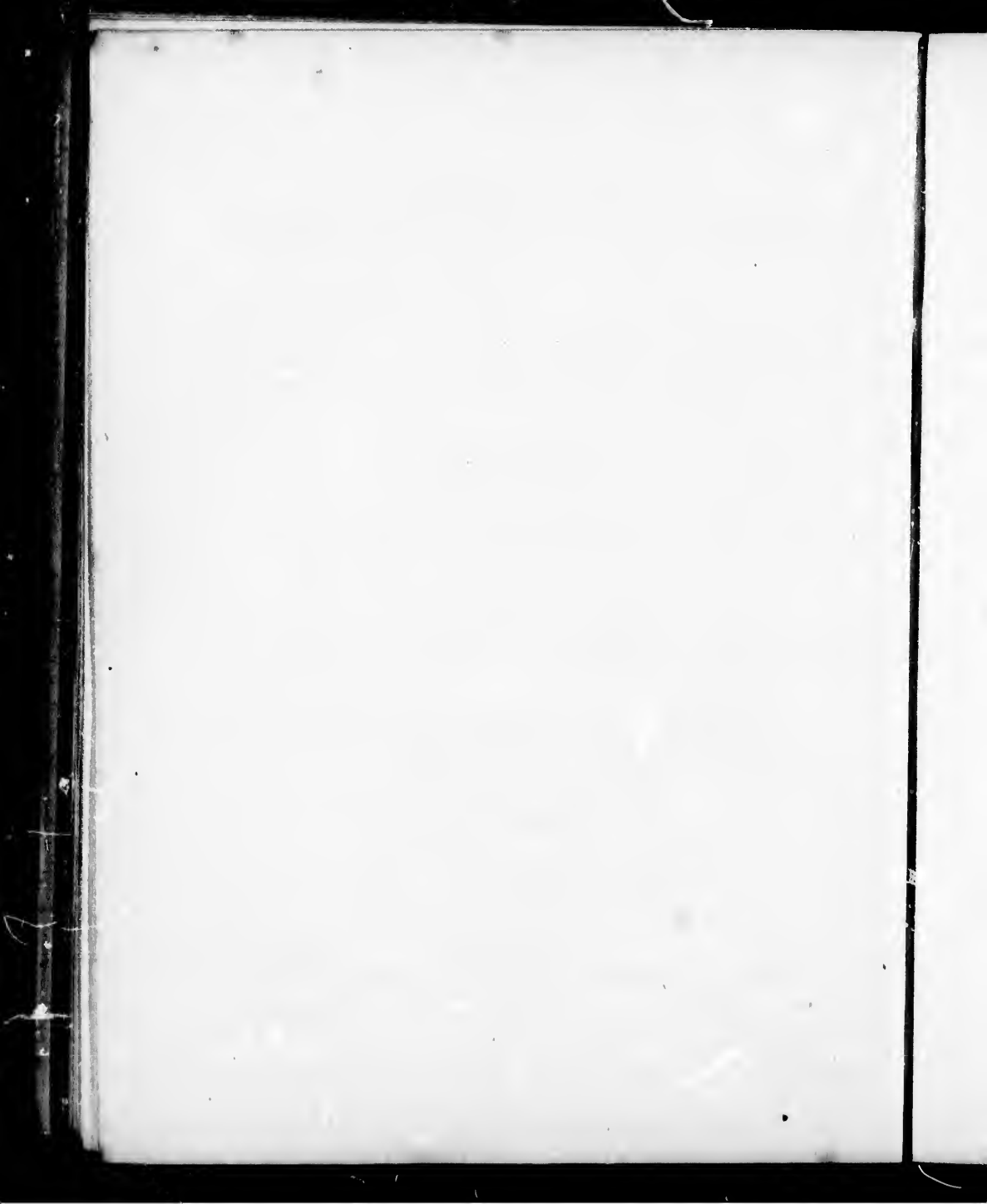
p.,

n-

e)

p.,

re.



Head of King to right, in circle. Brown imp., square.

8 R.B.E. (2½ sch. c.)

DUCHY OF SCHLESWIG-HOLSTEIN.

ADHESIVE STAMPS.

1848.—*Arms, double-headed eagle, in centre, white oval with arms in relief. Letters S. H. at top corners. Col. imp., rect.*

1 schilling blue, 2 s. pink.

N.B.—These stamps were only issued during the short time of the rebellion of 1848.

POSSESSIONS.

DANISH WEST INDIES.

Islands of St. Thomas and St. Croix.

1860.—*Similar device to that used in Denmark.*

3 cents red (dotted ground), 3 cents red (wavy ground).

France.

ADHESIVE STAMPS.

REPUBLIC.

Name, head of Liberty to left. Col. imp., rect.

1849.—20 cents black, 40 c. vermilion, 1 franc lake.

1850.—10 cents cinnamon. 15 c. green, 25 c. blue, 1 franc carmine.

PRESIDENCY.

1852.—*Name (Repub. Franc), Head of President Napoleon to left. Col. imp., rect.*

10 cents, cinnamon, 25 c. blue.

EMPIRE.

Name, Head of Emperor to left. Col. imp., rect.

1853.—10 cents cinnamon, 25 c. blue.

1854.—5 cents green, 20 c. blue, 80 c. carmine.

1860.—1 cent olive-green, 80 c. rose.

ESSAYS.

1848.—*Name (Repub. Franc), Head of Liberty to left. Col. imp., rect.*

10 cents marone, 15 c. brown, 20 c. blue, 1 franc black.

1858.—*Similar device, value not inscribed, inscription at top "ESSAI, 1858." Col. imp., rect.*

Green, yellow-brown, blue.

CHIFFRE TAXE.

1859.—*Name, figure indicating value. Black imp., square.*

10 centimes (die), 10 centimes (lithograph).

N.B.—This stamp is employed for unpaid letters, circulating in the same postal district.

lent

t.

y to

tion

mp.,

the

H
C
L
Y
H
C

FRENCH COLONIES.

1860.—*Name (Colonies de l'Empire Française) encircling eagle and crown. Col. imp., square.*

10 cents. cinnamon, 40 c. vermillion.

NEW CALEDONIA.

1860.—*Name, Head of Emperor. Col. imp., rect.*

10 centimes grey.

WEST INDIA POSSESSIONS.

Head of Emperor to left. Col. imp., on pink ground, rect.

10 cents. orange, 20 c. deep indigo.

REUNION.

1862.—*Name, date indicated. Black imp. on coloured paper.*

30 cents. green.

Germany.

NORTHERN STATES.

Electorate of Hesse-Cassel; Grand Duchies of Mecklenburg-Strelitz, and Saxe-Weimar; Duchy of Saxe-Altenburg; and Principalities of Lippe-Detmold, Lippe-Schauenberg, Reuss-Elder, Reuss-Younger, Schwarzburg-Sondershausen, Schwarzburg-Rudolstadt, &c.

COMPREHENDED UNDER THE OFFICE OF THURN UND TAXIS.

ADHESIVE STAMPS.

1850.—*Figure indicating value. Black imp. on coloured paper, square.*

$\frac{1}{4}$ silb. grosch. red-brown, $\frac{1}{3}$ silb. gr. flesh, $\frac{1}{4}$ silb. gr. green.
1 silb. gr. blue, 2 silb. gr. rose, 3 silb. gr. yellow.

1860.—*Similar to last. Col. imp. on white paper, square.*

$\frac{1}{4}$ silb. groschen red, $\frac{1}{4}$ silb. gr. green, 1 silb. gr. light blue.
2 silb. gr. rose, 3 silb. gr. russet, 5 silb. gr. lilac, 10 silb. gr. vermilion.

1862.—*Similar device.*

1 silb. groschen rose, 2 silb. gr. blue.

ENVELOPE STAMPS.

1861.—*Name of office (THURN U. TAXIS) figure in white relief indicating value. Col. imp., oval.*

$\frac{1}{4}$ silb. gr. orange, 1 s. gr. rose, 2 s. gr. blue, 3 s. gr. stone.

SOUTHERN STATES.

Free City of Frankfort, Landgraviate of Hesse-Homburg, Grand Duchy of Hesse-Darmstadt; Principalities of Hohenzollern-Hechingen, and Hohenzollern-Sigmaringen, and Duchies of Nassau, Saxe-Meiningen, Saxe-Coburg Gotha, &c.

COMPREHENDED UNDER THE OFFICE OF THURN UND TAXIS.

on

aper,

llion.

white

Jesse-
Prin-
Johen-
Saxe-

TAXIS.

9

1

E

1

18

2
18

ADHESIVE STAMPS.

1850.—*Figure indicating value. Black imp. on coloured paper, square.*

1 kreuzer green, 3 kr. pale lavender, 3 kr. deep blue, 6 kr. rose.
9 kr. yellow.

1860.—*Similar to last. Col. imp. on white paper, square.*

1 kreuzer blue, 1 kr. green, 3 kr. blue, 6 kr. rose, 9 kr. yellow.
15 kr. lilac, 30 kr. vermillion.

1862.—*Similar device.*

3 kreuzer rose, 6 kr. blue, 9 kr. stone.

GAZETTE STAMPS.

Figure indicating value in horn. Black on coloured paper, square.

1 kr. brown-yellow.

ENVELOPE STAMPS.

1861.—*Name of office (THURN U. TAXIS) figure in white relief indicating value. Col. imp., oct.*

2 kreuzer yellow, 3 kr. rose, 6 kr. blue, 9 kr. stone.

Granada Confederation.**ADHESIVE STAMPS.**

1859.—*Name, arms in shield encircled, in bordering the words "Confed. Granadina correos nacionales." Col. imp., oct.*

2½ cent green, 5 c. puce, 5 c. blue, 10 c. cinnamon, 10 c. red, 20 c. blue,
1 peso carmine.

1860.—*Stamps of similar design, with name and figures indicating value, larger.*

5 cent puce, 10 c. cinnamon, 20 c. blue.

1861.—*Name, arms in shield, round which, in oval, are the words "Estados unidos de Nueva Granada" and in bordering the words, "Correos nacionales." Col. imp., rect.*

2½ centavos black, 5 c. buff-yellow, 10 c. blue, 20 c. red-brown, 1 peso rose.

1862.—*Name, arms in shield, encircled. In bordering the words "E. U. de Columbia. Correos nacionales." Col. imp., oct.*

5 cent green, 10 cent blue, 20 cent rose.

N.B.—The shades of colour in all the above issues vary greatly.

Great Britain.

ADHESIVE STAMPS (First issued, 13th May, 1840).

Head of Queen Victoria to left, letters in bottom corners only. Col. imp., rect.

1d. black, 1d. red-brown, 1d. red, 2d. blue.

Similar device, letters in each corner.

1d. black, V.R. (official stamp).

Similar to last, letters in bottom corners only, white lines above and below head of Queen.

2d. blue.

and

*l, are
Nueva
ords,*

*ering
orreos*

y.

ottom

white

E

18

18

27

1

29

1

Similar to last, letters in each corner.

2d. blue.

*Head of Queen Victoria to left, in white relief. Col.
imp., oct.*

10d. brown.

Head of Queen Victoria to left. Col. imp., rect.

4d. rose, 6d. lilac, 1s. green.

1862.—*Similar to last, letters in each corner of stamp.*

3d. pink, 4d. vermilion, 9d. straw.

ESSAYS.

360.—*Head of Queen Victoria to left, in triangular
shield. Col. imp., rect.*

1½d. lake.

1862.—*Head of Queen Victoria to left, surrounded by
scroll, on coloured ground. Col. imp., rect.*

3d. rose.

ENVELOPE STAMPS.

27th April, 1840.—*Vignette by W. Mulready, R.A.,
over the cover. Col. imp., rec'.*

1d. black, 2d. blue.

29th Jan., 1841.—*Head of Queen Victoria to left, in
white relief, without date. Col. imp., oval.*

1d. brown, 1d. pink, 2d. blue.

Similar device. Octagonal.

6d. violet, 1s. green.

Similar to last, date indicated, oval.

1d. dark brown, 1d. pink, 2d. blue.

Similar device. Col. imp., on blue paper, date indicated, oval.

1d. pink, 2d. blue.

Similar device. Col. imp., date indicated, oct.

6d. violet, 1s. green.

Similar device. Col. imp., on blue paper, date indicated, oct.

6d. violet, 1s. green.

Head of Q. Victoria to left in white relief. Col. imp.

3d. rose (wavy border), 4d. vermilion (round).

ESSAYS.

1837.—*Watermark design over the envelope, except a white circular space in centre. At equal distances round the oval, four small ovals, in which are words "One Penny, not to exceed one ounce," round a crown and V. R., but differently placed in each oval. Col. imp.*

1d. light yellowish ochre.:

indi-

eci.

e indi-

l. imp.

*cept a
ual dis-
als, in
exceed
B., but
imp.*

1

1
2
0

1837.—*Watermark design over all the envelope, except a white oblong space in centre. At each top corner of oblong a quarter circle, in which are words, "V. R., London District Post," and in each bottom corner, a quarter circle, with words "to carry not exceeding 6 ounces," Col. imp., value in words.*

2d. bright green.

1838.—*Head of Queen Victoria, in white relief, encircled by the words, "Postage 1d., half oz.," Col. imp., oval.*

1d. blue, 1d. black.

1860.—*Head of Queen Victoria to left, in white relief. Col. imp., triangular.*

1½d. rose.

Greece.

ADHESIVE STAMPS

1861.—*Name, head of Mercury to right. Col. imp., on tinted paper. Rect.*

1 lept. light brown, 1 lept. marone, 2 l. cinnamon, 5 l. green, 10 l. red, 20 l. blue, 40 l. violet, 80 l. rose.

N.B.—The stamps issued in 1862, bear the value in figures at back of of stamp, printed in the same colour as the impression.

Grenada.

ADHESIVE STAMPS.

1860.—*Name, head of Queen Victoria, crowned, to left.*
Col. imp., rect.

1d. green, 6d. lake.

Hamburg.

ADHESIVE STAMPS.

1859.—*Name, Arms (castle) under figure indicating value. Col. imp., rect.*

$\frac{1}{2}$ schilling black, 1 sch. chocolate, 2 sch. red, 3 sch. blue, 4 sch. green,
7 sch. orange, 9 sch. yellow.

LOCAL STAMPS.

Name (C. Hamer and Co. Hamburg Boten Institut),
Figure indicating value, encircled, in square. Black
imp. on col. paper. Square.

$\frac{1}{2}$ (schilling) yellow, $\frac{1}{4}$ rose, $\frac{1}{4}$ light grey, $\frac{1}{4}$ dark green, $\frac{1}{4}$ light yellow,
 $\frac{1}{4}$ blue, $\frac{1}{4}$ light green, $\frac{1}{4}$ light brown.

ENVELOPE STAMPS.

Name (C. Hamer and Co. Hamburg Boten Institut),
and Figure indicating value surrounded by garter
in relief. Red imp.

$\frac{1}{2}$ (schilling) white paper, $\frac{1}{2}$ yellow paper.

ft.

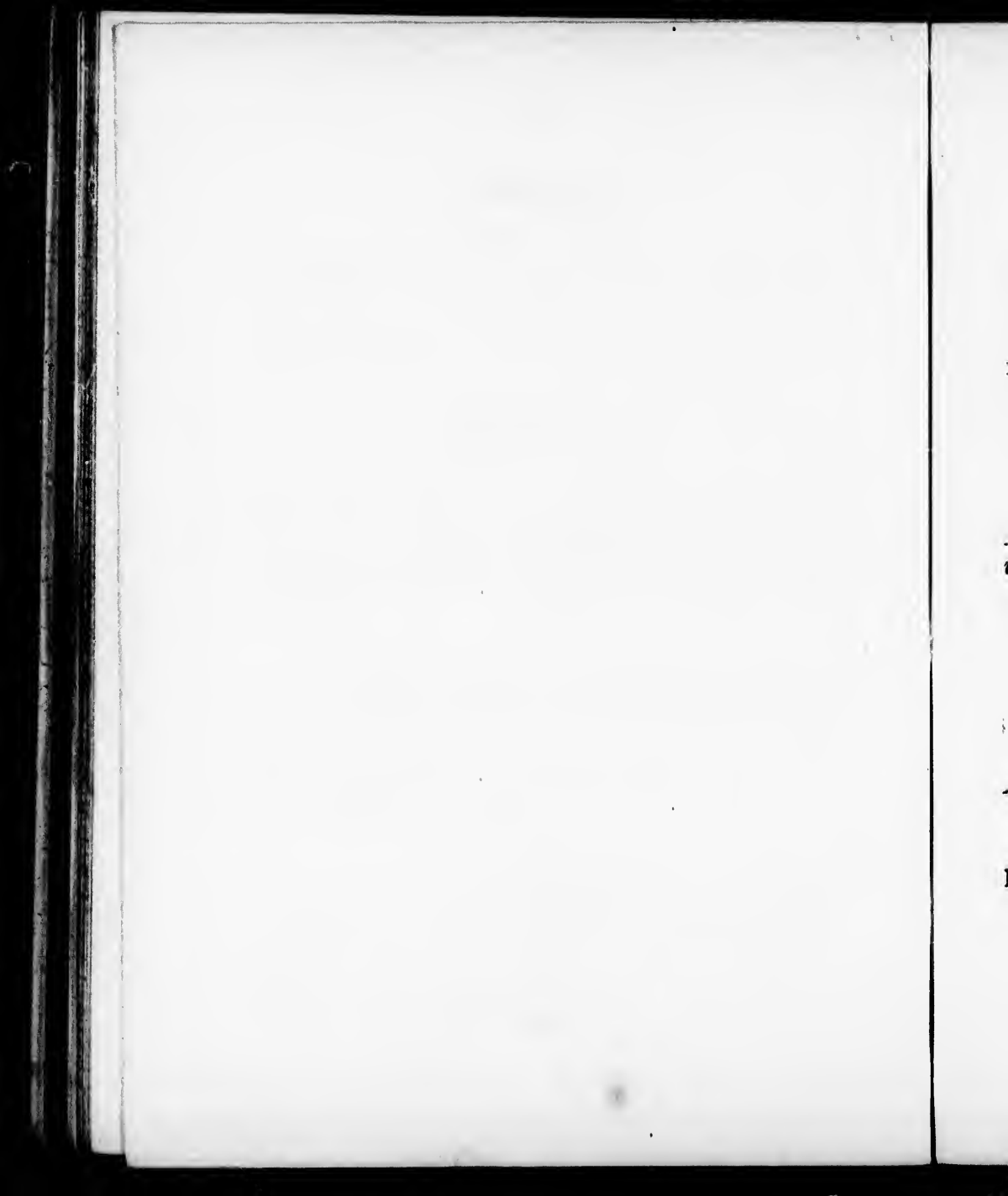
ing

een,

*t),
ack*

low,

*t),
ter*



Hanover.

ADHESIVE STAMPS.

1851.—*Name, value in figures on shield, under arms.*
Black imp. on plain col. paper. Rect.

1 guten gr. blue, 1 gu. gr. green, 1-30 thaler crimson, 1-30 tha. rose,
1-15 tha. blue, 1-15 tha. lilac, 1-10 tha. orange.

1858.—*Similar to last. Black imp., on white paper,*
with col. diaper pattern.

1 guten gr. green, 1-30 tha. lake, 1-15 tha. blue, 1-10 tha. orange.

Name, figure signifying value under crown in oval. Col.
imp., on white paper, with black diaper pattern.
Rect.

3 pfennige rose.

Similar to last without diaper pattern.

3 pfennige rose.

Name, Hunting Horn under crown. Black imp., rect.
¼ groschen.

1859.—*Name, head of King to left. Col. imp., rect.*
1 groschen rose, 2 gr. blue. 3 gr. yellow-brown.

1861.—*Similar device.*

1 groschen light rose, 2 gr. dark blue, 3 gr. brown, 10 gr. green.

ENVELOPE STAMPS.

1857.—*Name, head of King to left, in white relief, value in figures at bottom of stamp. Oval.*

1 guter groschen green, 1 silb. gr. rose, 2 silb. gr. blue, 3 silb. gr. yellow.

1859.—*Similar device, value in figures each side, and envelope inscription on left.*

1 groschen rose, 2 gr. blue, 3 gr. yellow.

1862.—*Similar device, envelope inscription on right.*

1 groschen rose, 2 gr. blue, 3 gr. brown.

LOCAL STAMPS.

1859.—*Hunting Horn, below trefoil in relief, on yellow paper. Col., imp., round.*

Bestell geld frei, green.

1862.—*Horse prancing, in relief, on yellow paper. Col. imp., round.*

Bestell geld frei, green.

Holland.

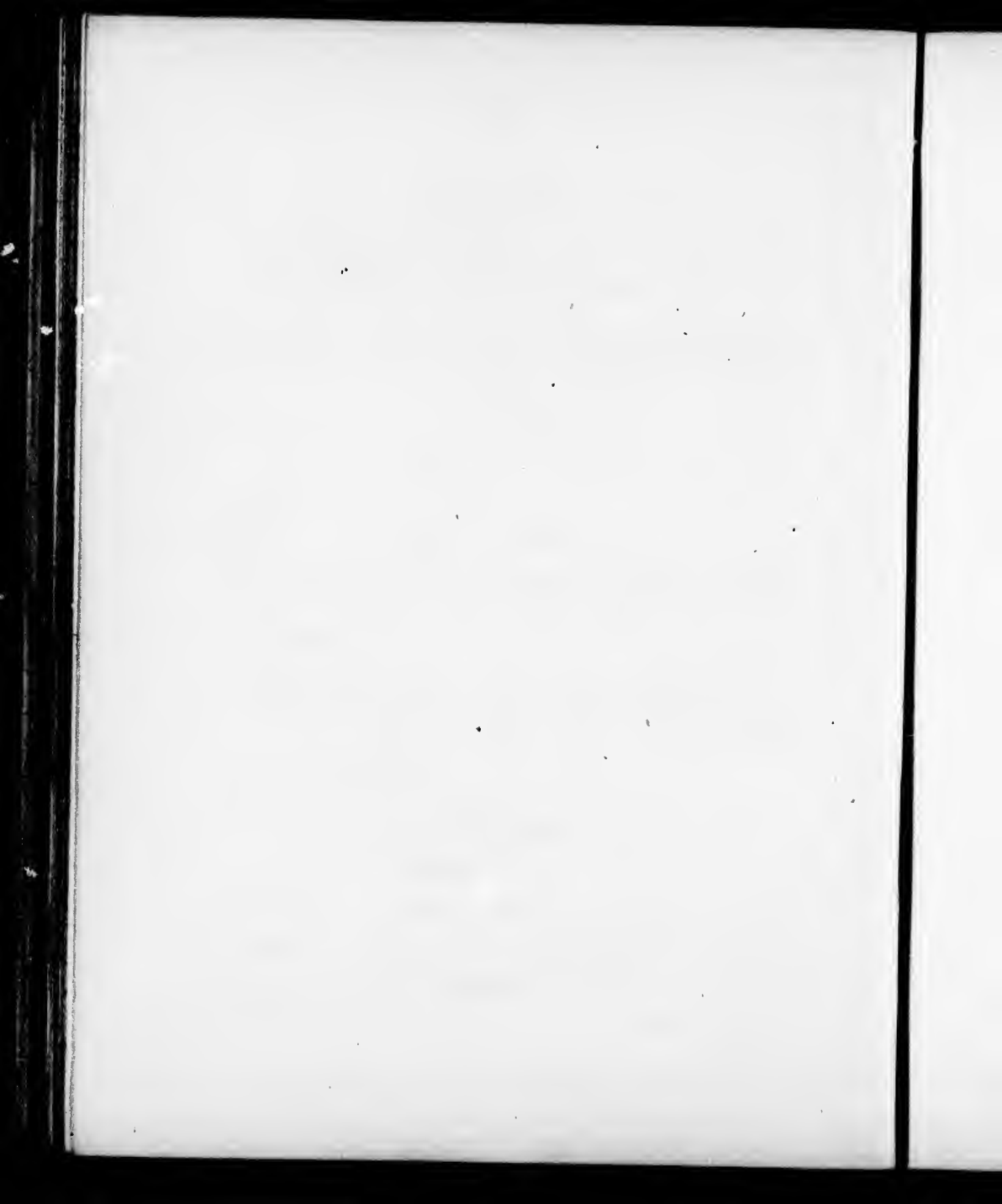
ADHESIVE STAMPS.

1852.—*Head of King to right. Col. imp., rect.*

5 c. dark blue, 5 c. light blue, 10 c. red, 15 c. orange.

ESSAY.

5 c. black.



POSSESSIONS.

DUTCH GUIANA.

1861.—*Crown surrounded by wreath, date indicated.*
Black imp., rect.

10 c. rose, 10 c. dark neutral, 10 c. lavender.

India.

ADHESIVE STAMPS.

1854.—*Name, head of Queen Victoria to left, in square.*
Col. imp., rect.

$\frac{1}{2}$ anna red, $\frac{1}{2}$ anna blue, 1 anna red, 2 annas green, 4 annas red (blue head) encircled (oct.).

1860.—*Name, head of Queen Victoria to left, in oval.*
Col. imp., rect.

$\frac{1}{2}$ anna blue, 1 anna brown, 2 annas yellow, 2 annas pink, 4 annas blue, 4 annas black, 8 annas rose.

NEWSPAPER STAMPS.

1860.—*Name, head of Queen Victoria to left, in oval.*
Col. imp., rect.

8 pies lilac.

ENVELOPE STAMPS.

1861.—*Head of Queen Victoria to left, in white relief,*
Col. imp. on white paper, round.

$\frac{1}{2}$ anna blue, 1 anna brown.

Similar to last. Col. imp., on blue paper, round.

$\frac{1}{4}$ anna blue, 1 anna brown.

Ionian Islands.

ADHESIVE STAMPS.

1860.—*Name in Greek characters. Head of Queen Victoria to left, surrounded by garter. Col. imp., value not designated. Rect.*

Yellow (value $\frac{1}{4}$ d.), blue (value 1d.), lake (value 2d).

Italy.

ADHESIVE STAMPS.

The stamps of the Kingdom of Sardinia included under this denomination, are also used in the annexed provinces, excepting the Neapolitan, which have special stamps.

1851.—*Head of King to right, white, in coloured oval. Inscription white, col. imp., rect.*

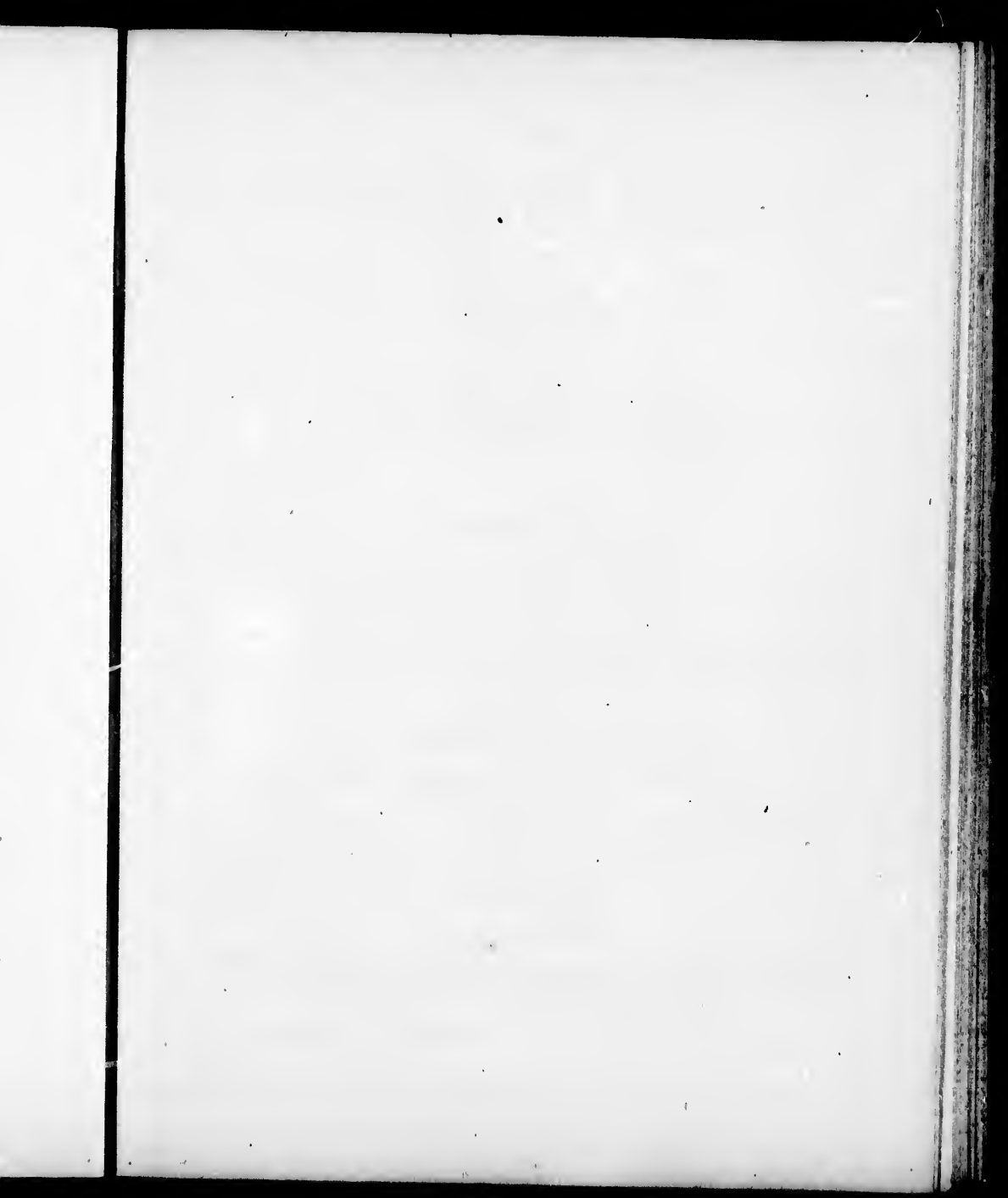
5 cent black, 20 cent blue, 40 cent red.

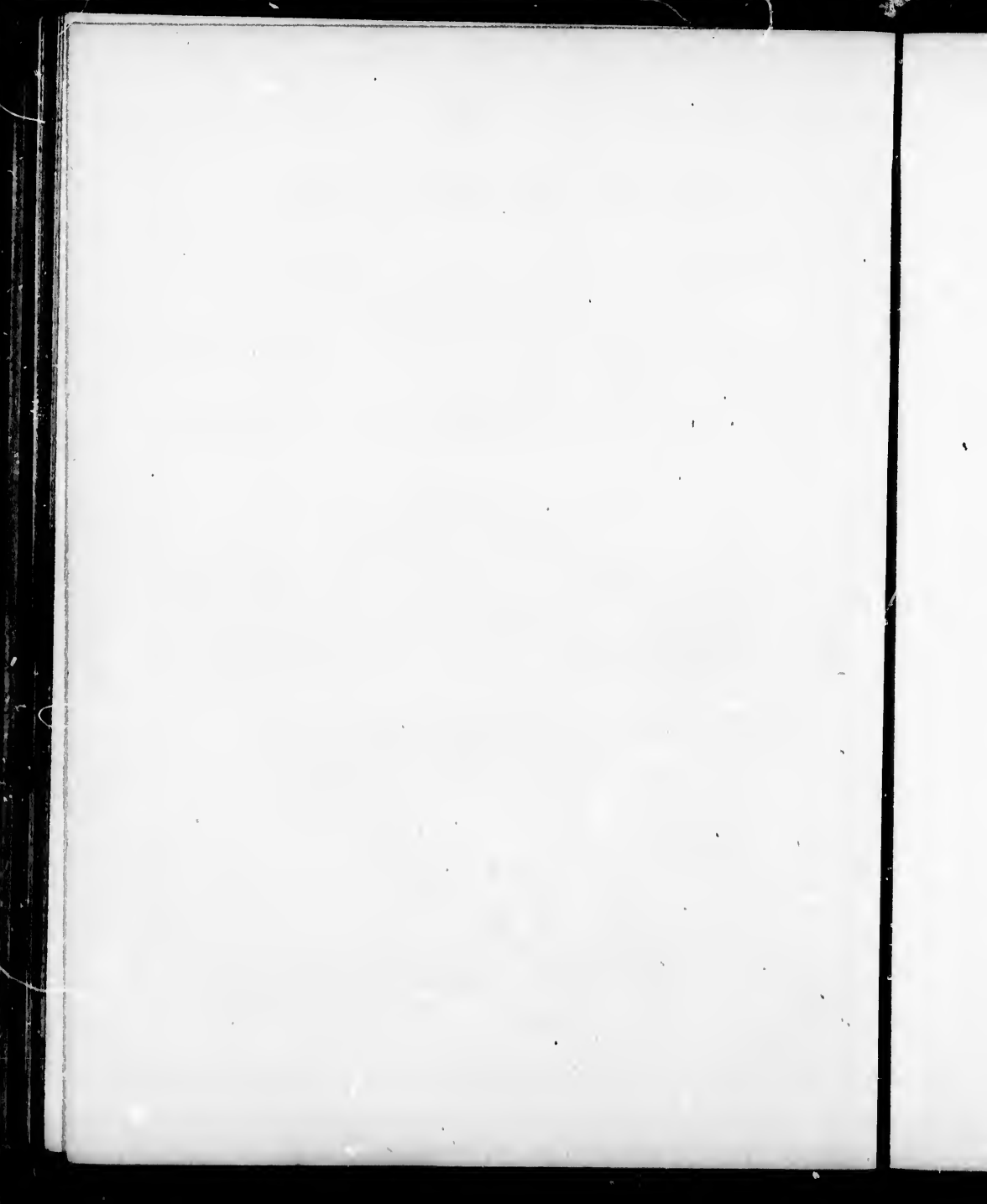
1852.—*Head of King to right, in relief, on coloured paper. Rect.*

5 cent green, 20 c. blue, 40 c. rose.

1855.—*Head of King to right, white relief, in white oval, remainder of stamp coloured. Rect.*

5 cent green, 20 c. blue, 40 c. red.





1856.—*Head of King to right, white relief, in white oval, inscription white. Col. imp., rect.*

5 cent dark green, 10 c. brown, 20 c. blue, 40 c. red, 80 c. yellow.
3 lire golden.

N.B.—The last-named vary from the lightest to darkest shades of colour.

NEWSPAPER STAMPS.

1861.—*Figure in white relief, in white oval, indicating value. Black imp., rect.*

1 cent, 2 cents.

NEAPOLITAN PROVINCES.

1861.—*Head of King to right, in white relief, in white oval. Col. imp., rect.*

$\frac{1}{2}$ tornese green, $\frac{1}{2}$ grano light brown, 1 gra. black, 2 gra. blue, 5 gra. lilac, 5 gra. vermilion, 10 gra. cinnamon, 20 gra. yellow, 50 gra. grey.

Jamaica.

ADHESIVE STAMPS.

1860.—*Name, head of Queen Victoria to left. Col. imp., rect.*

1d. blue, 2d. rose, 4d. orange, 6d. lilac, 1s. brown.

Liberia.

ADHESIVE STAMPS.

1860.—*Name, Goddess of Liberty sitting, and ship, in circle. Col. imp., large rect.*

6 cents pink, 12 c. lilac, 12 c. blue, 24 c. green.

Lubeck.

ADHESIVE STAMPS.

1859.—*Name, arms (double eagle), figure indicating value in each corner. Col. imp., rect.*

$\frac{1}{4}$ schilling violet, 1 sch. orange-red, 2 sch. brown, 2 $\frac{1}{4}$ sch. red.
4 sch. dark green.

ESSAY.

Similar device.

4 schilling black.

Luxembourg.

ADHESIVE STAMPS.

1852.—*Head of Grand-Duke to left, in oval. Col. imp., rect.*

10 centimes black, 1 silb. groschen rose, 1 silb. gr. red.

1859.—*Name, arms (lion rampant on barred shield, under crown). Col. imp., rect.*

2 cents black, 4 c. yellow, 10 c. blue, 12 $\frac{1}{2}$ c. rose, 25 c. marone.
30 c. violet-red, 37 $\frac{1}{2}$ c. green, 40 c. vermilion.

Malta.

ADHESIVE STAMP.

1861.—*Name, head of Queen Victoria to left. Col. imp. on glazed paper, rect.*

One halfpenny buff.

9

7.

7,

7.

A

f

2

1

Mauritius.

ADHESIVE STAMPS.

1857.—*Name, Britannia sitting, value not indicated,
Col. imp., rect.*

Red, dark green, magenta.

1858.—*Name, head of Queen Victoria to left (badly
executed) on ground of slanting lines from
right to left. Col. imp., rect.*

1d. red, 2d. blue.

*Similar device to last, ground composed of perpendicular
lines only. Col. imp., rect.*

2d. blue.

*Similar to last, ground composed of perpendicular,
horizontal, and slanting lines crossing each other.
Col. imp., rect.*

2d. blue.

*Name, head of Queen Victoria to left, block printed,
Greek bordering. Col. imp., rect.*

1d. red, 2d. blue.

Name, Britannia sitting. Col. imp., rect.

6d. blue, 1s. vermilion.

1861.—*Name, head of Queen Victoria to left, in oval.
Col. imp., rect.*

1d. brown, 2d. blue, 4d. rose, 9d. lilac, 1s. buff.

ENVELOPE STAMPS.

*Name, head of Queen Victoria to right, in white relief,
Col. imp.*

6d. purple (round), 9d. purple marone (9 sided).

Mecklenburg-Schwerin.

ADHESIVE STAMPS.

1860.—*Name, arms. Col. imp., square.*

4-4 schillinge red (very small), 3 sch. yellow, 5 sch. blue.

ENVELOPE STAMPS.

Name, arms, in white relief. Col. imp., oval.

1 schillinge red, 1½ sch. green, 3 sch. yellow, 5 sch. blue.

Mexico.

ADHESIVE STAMPS.

Name, head of President on coloured ground, in oval.

Col. imp. on white paper, rect.

¼ real blue, 1 rl. yellow, 2 rl. green, 4 rl. red, 8 rl. violet.

1861.—*Similar device. Black imp. on coloured
paper, rect.*

¼ real light brown, 1 rl. green, 2 rl. pink, 4 rl. yellow, 8 rl. brown.

Similar device. Col. imp. on coloured paper, rect.

4 reales red on yellow, 8 rl. green on brown.

lief,

ovals

ured

ct.

Modena.

ADHESIVE STAMPS.

Arms (eagle displayed under crown) surrounded by wreath. Black imp. on coloured paper, rect.

5 cent. green, 9 c. B.G. violet, 10 c. rose, 10 c. brown, 15 c. violet.
15 c. yellow, 25 c. primrose, 40 c. blue, 1 lira white.

NEWSPAPER STAMPS.

Arms (eagle displayed under crown) encircled by "Tassa Gazzetta." Black imp., square.

10 cent.

PROVISIONAL GOVERNMENT.

1859.—*Name, arms (Savoy Cross in shield under crown, &c.). Col imp., rect.*

5 cent. green, 15 c. chocolate, 20 c. lilac, 40 c. rose, 80 c. orange.

Moldavia.

ADHESIVE STAMPS.

1862.—*Arms (Bull's head over horn). Col. imp. executed with hand-stamp, inscription "Porto Scrisorei." Rect.*

40 paras blue, 80 paras red.

NEWSPAPER STAMP.

Similar to last. Inscription "Porto Gazetei."

5 paras black.

Monte Video.

ADHESIVE STAMPS.

Name, arms (sun with rays), in circle. Col. imp. oblong. Value twice in figures, and inscription, in block letters.

120 centesimos blue, 180 c. green.

Similar device, value once, in figures, and inscription in Roman letters.

60 centesimos pink, 60 c. brown, 80 orange.
100 c. carmine, 120 c. blue, 180 c. green, 240 c. red.

Batal.

ADHESIVE STAMPS.

Name, crown, and value in relief on coloured paper. Large rect.

1d. yellow, 1d. blue, 3d. rose, 6d. green, 1s. drab.

1860.—*Name, head of Queen Victoria crowned, in oval. Col. imp., rect.*

1d. red, 3d. blue, 6d. grey.

Rebis.

ADHESIVE STAMPS.

1861.—*Name, three female figures. Col. imp., rect. The groundwork and borders differing in each stamp.*

1d. lake, 4d. rose, 6d. lilac, 1s. green.

mp.
ion,

tion

per.

val.

rect.
each

1

1

1

1

New Brunswick.

ADHESIVE STAMPS.

1857.—*Name, crown in centre, round which, in four equidistant stars, are rose, shamrock and thistle.*

Col. imp., diamond shape.

3d. red, 6d. yellow, 1s. violet.

1861.—*Name, head of Queen crowned, in oval. Col. imp., rect.*

5 cents green, 10 c. red.

Name, bust of Prince of Wales, in Scotch dress. Col. imp., rect.

17 cents black.

Name. Col. imp., oblong.

1 cent brown (railway-engine), 12½ c. blue (steam-vessel).

ESSAY.

Name, head of Connell (the then Postmaster-General), in oval. Col. imp., rect.

5 cents chocolate.

Newfoundland.

ADHESIVE STAMPS.

Name, crown surrounded by four equidistant stars.

Col. imp., square.

1d. brown-violet, 5d. brown-violet.

Name, rose, shamrock and thistle, in midst of three joined circles. Col. imp., triangular.

3d. green.

Name, rose, shamrock and thistle bouquet in midst of circle. Red imp., rect. Each stamp differing slightly in design.

2d., 4d., 6d., 6½d., 8d., 1s.

1862.—*Similar device. Crimson imp.*

2d., 4d., 6d., 6½d., 8d., 1s.

New South Wales.

ADHESIVE STAMPS.

View of Sydney, encircled with motto, "Sigillum Nov. Camb. Aust." Col. imp., rect.

1d. red, 2d. green, 2d. blue-black, 2d. pale blue, 3d. brown, 3d. green, 3d. flesh.

Name, head of Queen Victoria, with wreath. Col. imp. on blue paper. Rect.

1d. red, 2d. blue, 3d. green, 6d. brown, 8d. orange.

Similar device. Col. imp. on white paper.

1d. orange, 2d. blue, 3d. green, 6d. brown, 8d. orange.

Name, Head of Queen Victoria, with diadem, the word South at top of stamp. Col. imp., rect.

1d. dark brown, 1d. red, 2d. blue, 3d. light green, 3d. dark green.

three

t of
ing

Tov.

reen'

np.

ord

1

1

1

Name, head of Queen Victoria, with words, "New South Wales" over arched. Col. imp., rect.

2d. blue.

Name, head of Queen Victoria in circle, surrounded by hexagon. Col. imp., large square.

5d. green, 6d. cinnamon-brown, 6d. light violet, 6. dark violet.

Similar device. Head surrounded by octagon.

8d. orange, 1s. red, 1s. blue, 1s. rose.

Name, bust of Queen Victoria, crowned and sceptred. Col. imp., round.

5s. violet.

Name, head of Queen Victoria wreathed, no value indicated, printed in two colours on white paper. Oval.

REGISTERED. Red and blue, yellow and blue.

N.B.—The shades of colour vary greatly.

New Zealand.

ADHESIVE STAMPS.

Name, bust of Queen Victoria crowned, in circle. Col. imp. on blue paper. Rect.

1d. red, 2d. blue, 1s. green.

Similar device. Col. imp., on white paper.

1d. vermilion, 2d. blue, 6d. brown, 1s. green.

Norway.

ADHESIVE STAMPS.

1855.—*Arms (lion rampant holding an axe, on shield ; and crown) in circle. Col. imp., rect.*

4 skilling blue.

1856.—*Name, head of King to left, in circle. Col. imp., rect.*

2 skilling yellow, 3 sk. lilac, 4 sk. blue, 8 sk. lake.

Nova Scotia.

ADHESIVE STAMPS.

Name, head of Queen Victoria, in diamond, set in square bordering. Col. imp. on blue paper, square.

1d. red-brown.

Name, crown surrounded by four equidistant stars, having rose, shamrock and thistle in their centres. Col. imp., square.

3d. blue, 6d. green, 1s. violet.

1860.—*Name, head Queen of Victoria to left, in circle. Col. imp., rect.*

1 cent black, 5 c. blue.

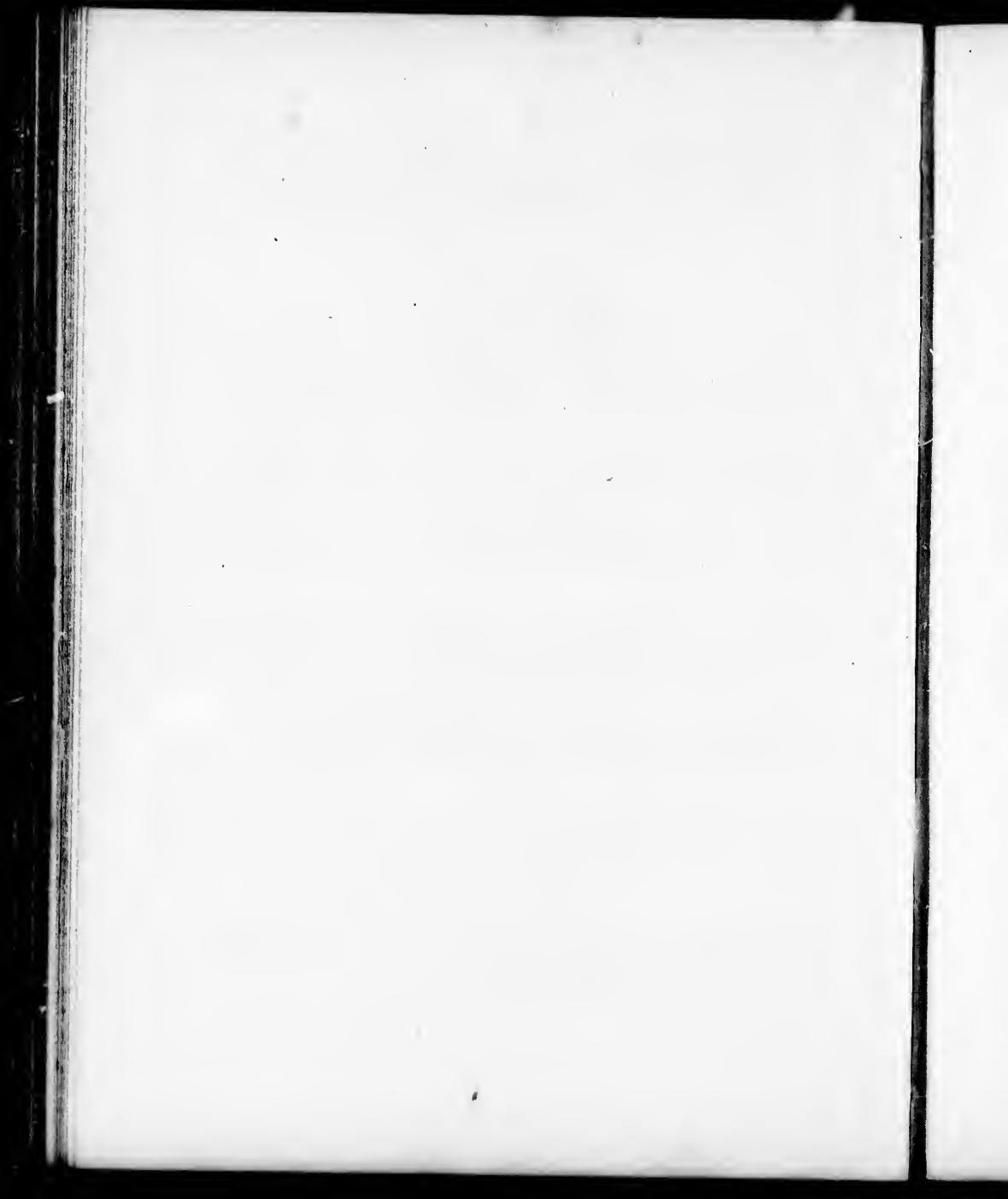
ld ;

Col.

are

*rs,
es.*

le.



Name, bust of Queen Victoria crowned, in oval. Col. imp., rect.

8½ cents green, 10 c. red, 12½ c. black.

Oldenburg.

ADHESIVE STAMPS.

1852.—*Name, value on shield under coat of arms, Black imp., rect.*

½ sllb. gr. green, 1-30 thaler blue, 1-15 th. rose, 1-10 th. yellow.

1860.—*Name, arms on shield under crown, in oval. value in figures each side. Black imp., on coloured paper. Rect.*

½ groschen green, 1 gr. blue, 2 gr. rose, 3 gr. yellow.

1861.—*Similar device. Col. imp., on white paper.*

¼ groschen yellow, ½ gr. green, ½ gr. marone. 1 gr. blue, 2 gr. red.
3 gr. yellow.

1862.—*Similar device.*

1 groschen rose, 2 gr. blue, 3 gr. brown.

ESSAY.

Similar device. Black imp., on white paper.

2 groschen.

ENVELOPE STAMPS.

1861.—*Name, shield and crown in white relief. Col. imp., oval, envelope inscription on left.*

¼ groschen brown, 1 gr. blue, 2 gr. rose, 3 gr. yellow.

1862.—*Similar device, envelope inscription on right.*

$\frac{1}{4}$ groschen orange, 1 gr. rose, 2 gr. blue, 3 gr. brown.

Papal States.

ADHESIVE STAMPS.

Arms (Tiara and keys), black imp., various forms.

$\frac{1}{4}$ Baj. grey. $\frac{1}{4}$ Baj. violet (oval). 1 Baj. green (oval). 2 Baj. green (oblong). 3 Baj. cinnamon (oval). 4 Baj. yellow (round). 5 Baj. rose (rect). 6 Baj. white (octagonal). 7 Baj. blue (octagonal). 8 Baj. white (octagonal).

Similar device. Col. imp., oblong scroll.

50 Baj. blue, 1 scudo vermillon. Bollo straordinario.

Parma.

ADHESIVE STAMPS.

Name, arms (Fleur-de-lis) in circle with crown, Greek bordering at side. Col. imp., on white paper, rect.

5 centes. yellow, 15 c. scarlet, 23 c. red-brown.

Similar device. Black imp. on col. paper.

5 centes. yellow, 10 c. flesh, 15 c. rose, 25 c. purple, 40 c. blue.

1858.—*Name (Duc. di. Parma Piac. Ecc.) over crown and shield. Col. imp. rect.*

15 centes. pink-red, 25 c. brown, 40 c. blue.

t.

en
se
te

6

185

5 ce
40 c

6 c.

Armi
wr
squ

1 dine

Sin

1 dine

Si

1 pese

Sa

1 diner

PROVISIONAL GOVERNMENT.

1859.—*Name (Stati Parmensi). Col. imp. on white paper. Oct.*

5 centesimi light green, 5 c. dark green, 10 c. brown, 20 c. blue.
40 c. red, 80 c. orange.

— *Similar device. Black imp. on coloured paper.*
6 c. carmine, 9. c. blue.

Peru.

ADHESIVE STAMPS.

Arms (Llama, tree and Cornucopiæ quartered on shield, wreathed) on coloured ground in circle. Col. imp., square, bordering formed of double lines.

1 dinero blue, 1 dinero slate, 1 peseta red-brown.

Similar device. Bordering formed of single lines.

1 dinero blue, 1 peseta rose, $\frac{1}{2}$ peso yellow.

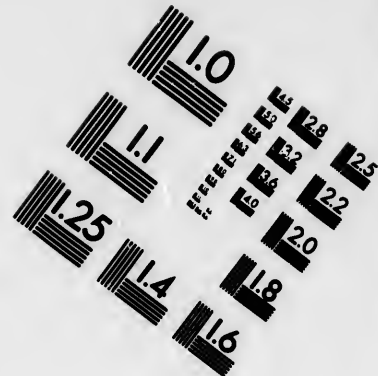
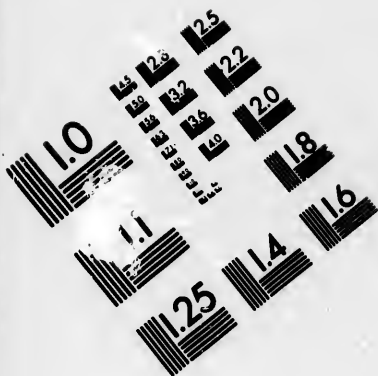
Similar device, arms on white ground in circle.

1 peseta red.

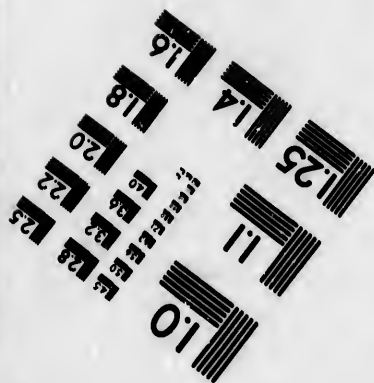
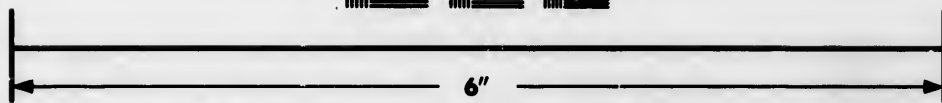
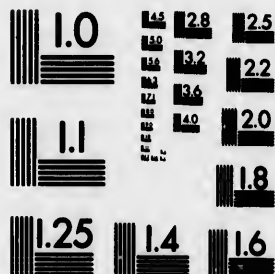
Similar device. Cornucopiæ on white ground.

1 dinero blue, 1 peseta pink.





**IMAGE EVALUATION
TEST TARGET (MT-3)**



**Photographic
Sciences
Corporation**

23 WEST ALBION STREET
WEBSTER, N.Y. 14560
(716) 872-4503

14 28
15 32 25
16 36 22
17 20
18

19
20
21
22
23
24
25
26
27
28
29
30
31
32
33
34
35
36
37
38
39
40
41
42
43
44
45
46
47
48
49
50
51
52
53
54
55
56
57
58
59
60
61
62
63
64
65
66
67
68
69
70
71
72
73
74
75
76
77
78
79
80
81
82
83
84
85
86
87
88
89
90
91
92
93
94
95
96
97
98
99
100

VARIETY.

*Steam-vessel in oval. Col. imp., large oblong. Letters
P. S. N. C., in corners.*

$\frac{1}{2}$ oz. 1 real blue, 1 oz. 2 reales carmine.
 $\frac{1}{2}$ oz. 1 real carmine, 1 oz. 2 reales blue.

N.B.—Used by the Pacific Steam Navigation Company's vessels only,
between the different places on the coast.

ESSAYS.

*Arms (Llama, &c., on shield), in white relief. Black
imp., square.*

1 dinero white, 1 peseta white.

Portugal.

ADHESIVE STAMPS.

*Head of Queen Maria II., to left, in white relief. Col.
imp.*

5 reis brown, 25 reis blue, 50 reis green, 100 reis lilac.

858-62.—*Head of King Pedro V., to right, in white
relief. Col. imp.*

5 reis brown, 5 reis dark chocolate, 25 reis blue, 25 reis rose.
50 reis green, 100 reis lilac.

N.B.—Except the blue stamp of 25 reis, all those bearing the head of
Pedro V., are in present use.

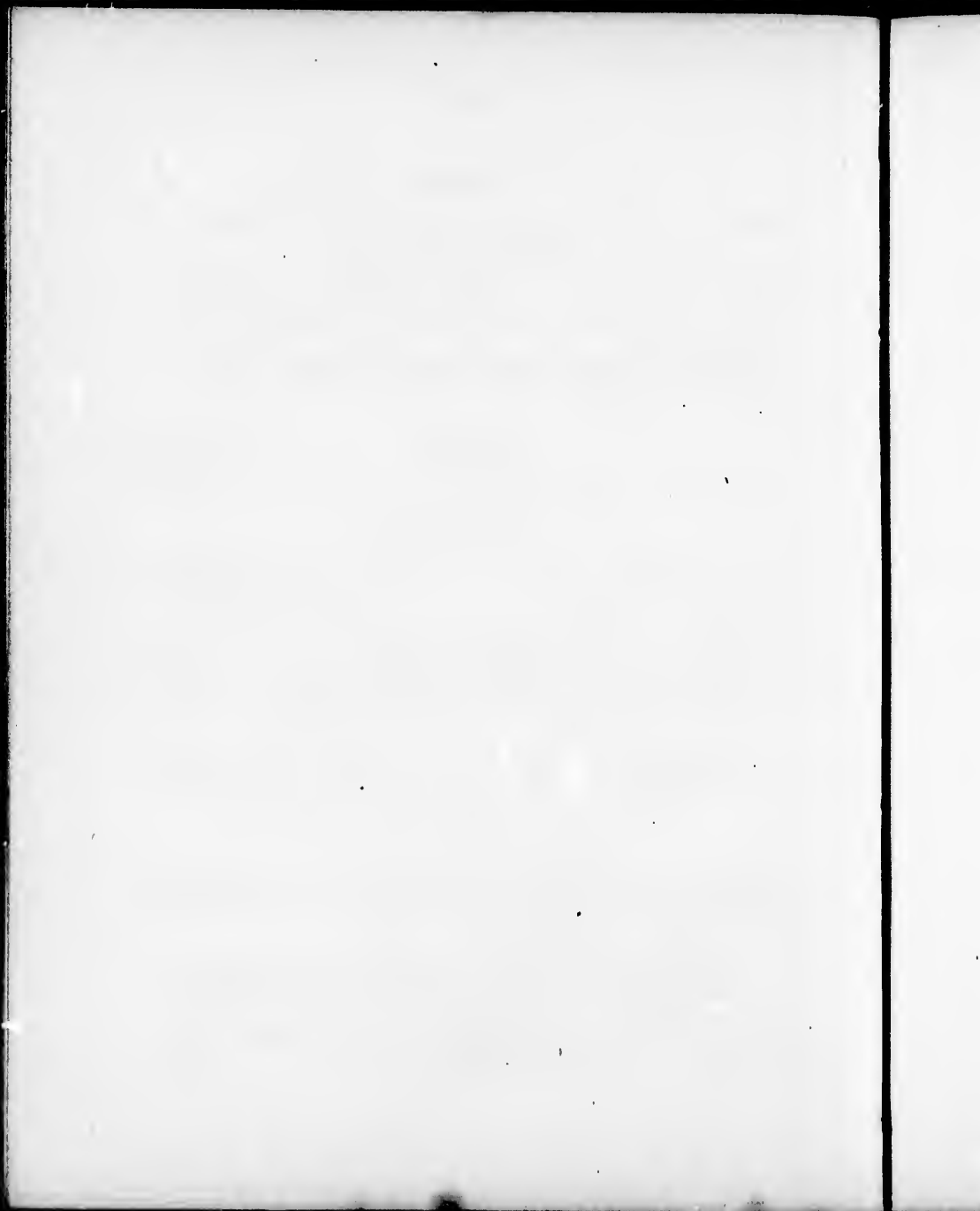
s

k

l.

ite

t



Prince Edward Island.

ADHESIVE STAMPS.

1860.—*Name, head of Queen Victoria. Col. imp., rect., each stamp differently designed.*

1d. orange, 2d. rose, 3d. blue, 6d. green. 9d. currency, equal to 6d. stg., lilac.

Prussia.

ADHESIVE STAMPS.

Head of King to right. Col. imp. on coloured paper, rect., groundwork composed of crossed lines.

4 pfenninge green, 6 pf. vermillion.

Similar device. Black imp. on coloured paper.

1 silber gr. lake, 2 s. gr. drab, 2 s. gr. blue, 3 s. gr. yellow.

1857.—*Similar device. Groundwork block print. Col. imp. on white paper., rect.*

1 silber gr. rose, 2 s. gr. blue, 3 s. gr. orange.

1858.—*Similar device. Groundwork crossed lines.*

4 pfenninge green, 6 pf. vermillion.

1 silb. gr. rose, 2 s. gr. blue, 3 s. gr. orange.

1861.—*Name, arms (eagle holding orb and sceptre). Col. imp., rect.*

4 pfenninge green, 6 pf. vermillion.

Similar device. Oval.

1 silb. gr. rose, 2 s. gr. blue, 3 s. gr. stone.

ENVELOPE STAMPS.

Head of King to right in white relief. Col. imp., the first three oval, the others oct., and having two threads across each stamp.

1 silber groschen rose, 2 s. gr. blue, 3 s. gr. yellow, 4 s. gr. brown.
5 s. gr. lilac, 6 s. gr. green, 7 s. gr. red.

1857.—*Similar device, without the threads, and having envelope inscription on left.*

1 silb. gr. rose, 2 s. gr. blue, 3 s. gr. yellow, 4 s. gr. brown.

1861.—*Name, arms (eagle holding sceptre and orb), in white relief. Col. imp., oval.*

1 silb. gr. rose, 2 s. gr. blue, 3 s. gr. stone.

N.B.—The Duchies of Anhalt-Bernbourg, Anhalt-Coethem, and Anhalt-Dessau, and Principalities of Birkenfeld, and Waldeck, employ the stamps of Prussia.

Queensland.

ADHESIVE STAMPS.

1861.—*Name, bust of Queen Victoria crowned, in oval. Col. imp., rect.*

1d. red, 2d. blue, 3d. brown, 6d. green, 1s. dark purple.
Registered (without value) malze.

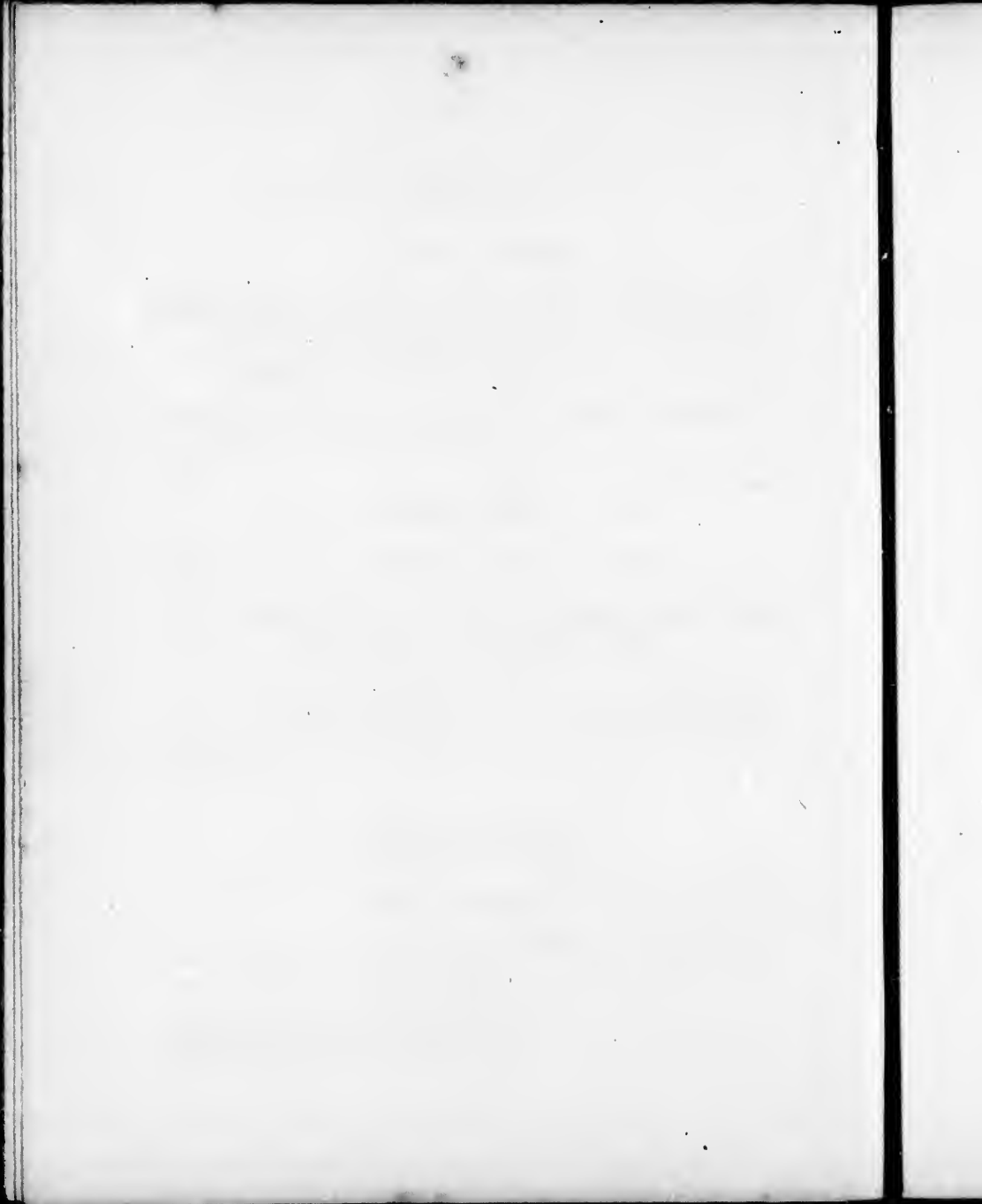
he
oo

ad

in

n-
he

al.



Romagne.

ADHESIVE STAMPS.

1859.—*Name, figure indicating value. Black imp., on coloured paper, rect.*

$\frac{1}{2}$ Bai. lemon, 1 Bai. grey, 2 Bai. yellow, 3 Bai. green, 4 Bai. red.
5 Bai. lilac, 8 Bai. rose., 20 Bai. blue.

N.B.—The above were discontinued in April 1860, and those of the Kingdom of Italy used instead.

Russia.

ADHESIVE STAMPS.

1858.—*Arms (double-eagle crowned, holding sceptre and orb, over two horns coupled), white relief in oval. Col. imp., rect.*

10 kopecs brown, centre blue, 20 kop. blue, centre orange.
30 kop. rose, centre green.

ENVELOPE STAMPS.

1854-62.—*Arms (as above). Blue imp. on white paper, round.*

5 and 1 kop. (for the City of St. Petersburg).

1858.—*Arms (as above) in white relief. Col. imp., round.*

10 and 1 kop. black, 20 and 1 kop. blue, 30 and 1 kop. rose.

N.B.—The extra 1 kop. to each stamp represents the price of the envelope.

FINLAND.

ADHESIVE STAMPS.

Arms (crowned lion holding scimitar in shield under crown) in oval. Col. imp. on tinted paper, rect.

5 kopecs blue, 10 kop. rose.

ENVELOPE STAMPS.

Arms (crowned lion holding scimitar in shield under crown, and over horns coupled). Col. imp., ellipse.

5 kop. blue, 10 kop. rose, 20 kop. black.

1862.—*Similar to adhesive stamp. Col. imp. on white paper, rect.*

5 kop. blue, 10 kop. rose.

POLAND.

ADHESIVE STAMPS.

Similar to Russia.

10 kop. blue, centre red

ENVELOPE STAMPS.

Arms (similar to Russia). Col. imp. round.

3 kop. blue, (for the city of Warsaw), 10 kop. black.

St. Helena.

ADHESIVE STAMP.

1859.—*Name, head of Queen Victoria to left. Col. imp., rect.*

6d. blue.

er

er

ite

ol.

1

1

1

1

1

1

St. Lucia.

ADHESIVE STAMPS.

1859.—*Name, head of Queen Victoria to left in oval.*
Col. imp., rect., no value indicated.

Red (value 1d.), blue (value 4d.), green (value 6d.).

St. Vincent's.

ADHESIVE STAMPS.

1859.—*Name head of Queen Victoria. Col. imp.*
rect.

1d. lake, 6d, green.

Sandwich Islands.

ADHESIVE STAMPS.

1860.—*Name (Hawaiian postage), figure indicating*
value. Col. imp., rect.

2 cents blue, 2 cents black.

Name (Honolulu postage, Hawaiian Island), half
figure of King Kamehameha III, in military costume.
Col. imp., rect.

5 cents blue, 13 c. red, (Haw. 50, U. S., 8 cs.).

1861.—*Bust of King, inscriptions "uku leta" "elua*
keneta." Col. imp., rect.

2 cents rose.

Saxony.

ADHESIVE STAMPS.

Name, figure indicating value. Col. imp., square.
3 pfennige red.

Name, head of King Frederic Augustus to right. Black imp., rect.

$\frac{1}{2}$ Neu grosch. grey, 1 N. gr. rose, 2 N. gr. blue-green.
2 N. gr. dark blue, 3 N. gr. white, 3 N. gr. yellow.

1854-62—*Name, arms (shield under crown) in oval.*
Col. imp., rect.

3 pfennige green.

Name, head of King John to left. Black imp., rect.

$\frac{1}{2}$ New grosch. grey, 1 N. gr. rose, 2 N. gr. blue, 3 N. gr. yellow.

Similar device. Col. imp.

5 New grosch. vermilion, 10 N. gros. light blue.

ENVELOPE STAMPS.

Name, head of King John to left, in white relief. Col. imp., oval.

1 Neu groschen rose, 2 N. gr. blue, 3 N. gr. yellow, 5 N. gr. lilac.
10 N. gr. green.

Sierra Leone.

ADHESIVE STAMPS.

Name, head of Queen Victoria to left, in octagon. Col. imp., rect.

6d. lilac.

3.

ack

al.

t.

ol.

:

ol.

M

6d.

M

A

11

10

1

10

South Australia.

ADHESIVE STAMPS.

*Name, head of Queen Victoria to left, in circle. Col.
imp., rect.*

1d. dark green, 1d. light green, 2d. carmine, 2d. light red, 6d. deep blue,
6d. pale blue, 1s. orange, 1s. yellow.

*Name, head of Queen Victoria to left, in oval. Col.
imp., rect.*

9d. iron-grey.

ESSAYS.

1d. black, 6d. black.

Spain.

ADHESIVE STAMPS.

*Arms (bear climbing a tree), in oval, under crown,
wreathed in octagon words "Correo interior."
Bronze imp., rect.*

1 cuarto, 2 c., 3c.

1850.—*Head of Queen crowned, to left, date indicated.
Col. imp., rect.*

6 cuartos black, 12 c. violet (head to right), 5 reales red, 6 rl. blue,
10 rl. green.

1851.—*Head of Queen to right, in oval. Col. imp.,
rect., date indicated.*

6 cuartos black, 12 c. violet 2 reales red, 5 rl. rose, 6 rl. blue
10 rl. blue.

1852.—*Head of Queen to left, in circle. Col. imp., rect., date indicated.*

6 cuartos rose, 12 c. violet, 2 reales red, 5 rl. green, 6 rl. light blue.

1853.—*Head of Queen to right, in oval, date indicated. Col. imp., rect.*

6 cuartos red, 12 c. violet, 2 reales rose, 5 rl. green 6 rl. blue.

1854.—*Royal arms (lion and castle quartered on shield under crown), date indicated. Col. imp., rect.*

2 cuartos green, 4 c. pink, 6 c. lake, 1 real black, 2 rl. scarlet, 5 rl. green, 6 rl. blue.

1855.—*Head of Queen to right, in circle. Col. imp., on bluish paper, rect., watermark in curves.*

2 cuartos green, 4 c. lilac, 1 real blue, 2 rl. chocolate.

1856.—*Similar device on white paper, watermark oblique lines crossed.*

2 cuartos green, 4 c. lilac, 1 real blue, 2 rl. violet.

1857.—*Similar device, without watermark.*

2 cuartos green, 4 c. rose, 1 real blue, 2 rl. chocolate.

1860-62.—*Head of Queen to left, in circle. Col. imp., rect.*

2 cuartos green, 4 c. orange, 12 c. carmine, 19 c. brown-red, 1 real blue 2 rl. lilac.

mp.,

e.

ted.

ield

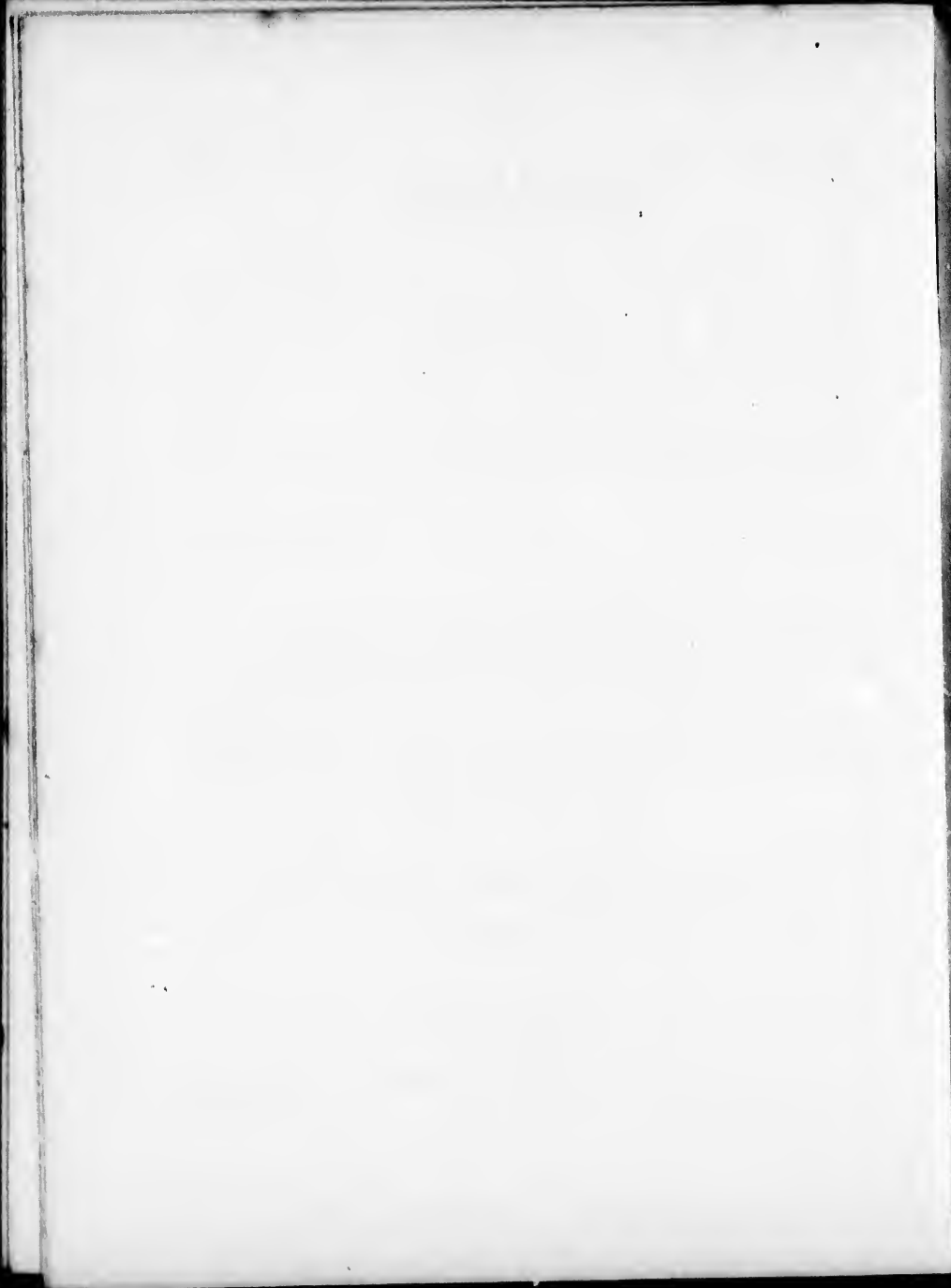
arlet,

, on

ark

mp.,

blue



OFFICIAL STAMPS.

(CORREO OFFICIAL.)

1854.—*Royal arms (lion and castle quartered on shield, under crown), date indicated. Black imp., on coloured paper, rect.*

$\frac{1}{4}$ onza orange, 1 onza rose, 4 onza green, 1 libra blue.

1854.—*Royal arms as above, date not indicated. Black imp. on coloured paper, oval.*

$\frac{1}{2}$ onza orange, 1 onza rose, 4 onza green, 1 libra blue.

POSSESSIONS.

Cuba, Hayti, and Porto Rico.

ADHESIVE STAMPS.

1855.—*Head of Queen to right, in circle. Col. imp., on bluish paper, rect., watermark in curves.*

$\frac{1}{4}$ rl. plata blue-green, 1 rl. pl. green, 2 rl. pl. red.

1856.—*Similar device on white paper, watermark oblique lines crossed.*

$\frac{1}{2}$ rl. plata blue, 1 rl. pl. green, 2 rl. pl. deep red.

1857.—*Similar device, without watermark.*

$\frac{1}{4}$ rl. plata blue, 1 rl. pl. green, 2 rl. pl. rose.

ISLAND OF LUZON (PHILLIPINES).

ADHESIVE STAMPS.

1854.—*Head of Queen. Col. imp., rect.*

Correo interior, without indication of value.
6 cuartos, 1 real.

Head of Queen to right, in circle. Col. imp., rect.
Correo interior, 5 cuartos red.

Sweden.

ADHESIVE STAMPS.

1855.—*Name, arms (shield and crown). Col. imp., rect.*

3 skill. bco. green, 4 s. bco. blue, 6 s. bco. fawn, 8 s. bco. yellow,
24 s. bco. red, 24 s. bco. light cinnamon.

1858.—*Similar device.*

5 ore green, 9 ore lilac, 12 ore blue, 24 ore yellow, 30 ore red-brown,
50 ore lake.

LOCAL STAMP (for the City of Stockholm, only).

"Frimärke för Lokalbref," in circle. Oblong.

1855.—Black.

1862.—Light-brown.

Switzerland.

CANTONAL ADMINISTRATION.

ADHESIVE STAMPS.

BASLE.

Name, Dove in white relief, on red shield. Black imp.
on green and white paper.

2½ Rap.

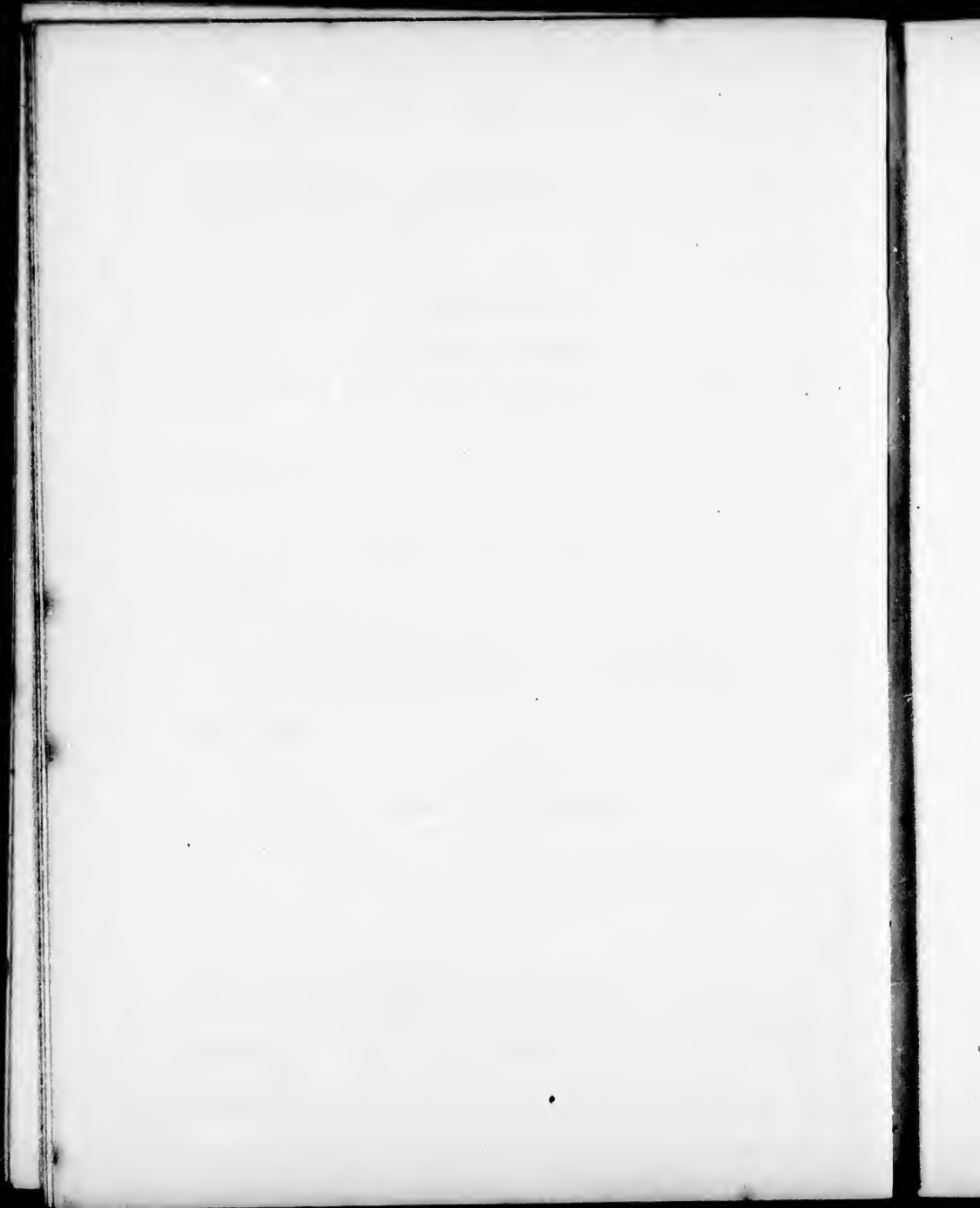
ct.

pp.,

llow,

own,

np.



GENEVA.

Name, arms (shield bearing half eagle and key), motto, post tenebras lux," &c. Black imp., on coloured paper, rect. port cantonal.

5 cent. yellow, 5 c. light green, 5 c. dark green.

Similar device, smaller rect. Port local.

5 cent. yellow-green, 5 c. blue-green.

Similar device, col. imp., on white paper, rect.

5 cent. green, port cantonal.

NEUCHÂTEL.

White cross on red ground, in shield. Black imp., rect.

5 centimes, poste locale.

VAUD.

White cross on red ground, in shield, with posthorn, oblong.

4 cent. black, 5 cent. black.

ZURICH.

1843.—*Figure indicating value, date indicated. Black imp., rect.*

4 cent. local tax, 6 cent. cantonal tax.

1850.—*Name (Zurich), figure indicating value. Date not indicated. Black imp., rect. fine perpendicular lines through stamp.*

4 cent. local tax, 6 cent. cantonal tax.

Similar to last. Fine horizontal lines across stamp.

4 cent. local tax, 6 cent. cantonal tax.
6 cent. cantonal tax (larger figure).

GERMAN AND FRENCH CANTONS.

Arms (white cross on red ground). Black imp., rect.

2½ Rap. orts post, 2¼ Rap. orts post (smaller cross with black shading), 2¼ Rap. poste-locale, 2¼ Rap. orts post, poste-locale (with posthorn, and oblong form).

FEDERAL ADMINISTRATION.

Arms (white cross in coloured shield). Black imp. on coloured paper, rect.

5 Rap. dark blue, 10 Rap. orange, 10 Rap. yellow.

Similar device. Col. imp. on white paper.

5 Rap. blue, 15 Rap. rose, 15 Rap. rose (smaller figures), 15 cents rose.

1854-62.—*Goddess of Liberty, sitting with shield bearing white cross. Col. imp., rect.*

5 Rappen amber, 5 Rap. brown, 10 Rap. yellow, 10 Rap. blue, 15 Rap. rose, 20 Rap. yellow, 40 Rap. green, 1 franc grey.

Date
lar

mp.

rect.

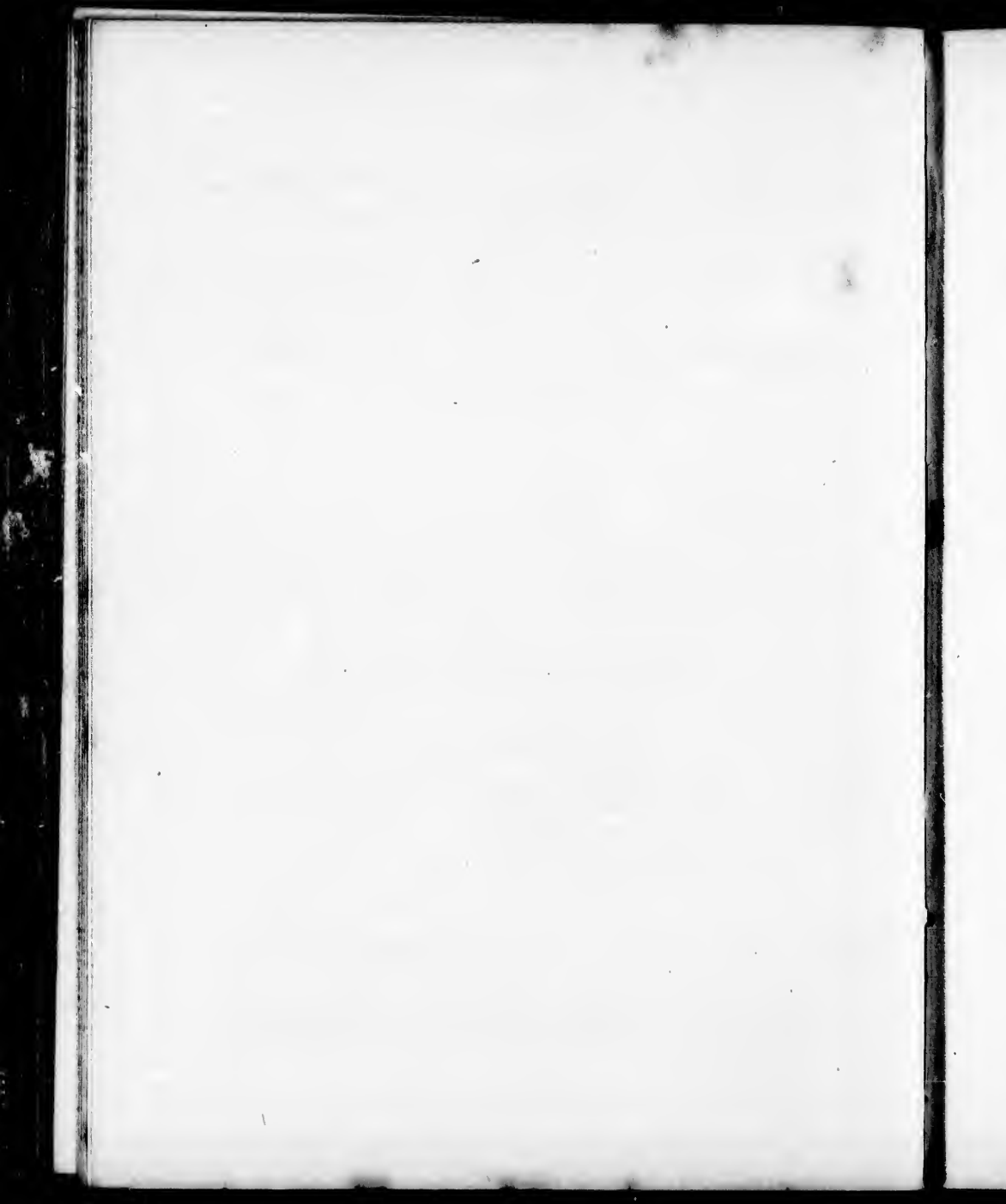
shad-
horn,

imp.

rose.

ield

rose,



Tasmania.

ADHESIVE STAMPS.

Name (Van Diemen's Land), head of Queen Victoria to right. Col. imp., rect.

1d. pale blue.

Similar device. Octagon.

4d. orange, 4d. brown.

Similar to last, having head of Queen Victoria to left.

10d. red.

1860.—*Name (Van Diemen's Land), head of Queen Victoria, crowned. Col. imp., rect.*

1d. red, 2d. emerald-green, 2d. dark green, 4d. blue.

Name ("Tasmania") head of Queen Victoria in oct. Col. imp., oct.

6d. violet, 1s. red.

Trinidad.

ADHESIVE STAMPS.

Name, value not indicated. Britannia sitting. Blotched wood-block imp. on bluish paper, rect.

Red, blue, grey.

Similar device, die badly executed. (Native?)

Blue, purple.

Similar device. Col. imp. on white paper, rect.

Red, crimson, blue, black.

Similar device, value indicated.

4d. violet, 6d. green, 1s. blue-black.

Tuscany.

ADHESIVE STAMPS.

Name, arms (crowned lion sitting, with shield), Col. imp., on bluish paper. Rect.

1 quattr black, 1 soldo yellow, 2 soldi red, 1 crazia marone, 2 crazie blue, 4 cra. dark green, 6 cra. dark blue, 9 cra. brown, 60 cra. red-brown.

Similar device. Col. imp. on white paper.

1 quattr black, 1 soldo yellow, 1 crazia marone, 2 crazie blue, 4 cra. green, 6 cra. dark blue, 9 cra. brown, 60 cra. red-brown.

1859.—*Name, arms (Savoy cross on shield, &c.). Col. imp., rect.*

1 centes. violet, 5 c. green, 10 c. brown, 20 c. blue, 40 c. red, 80 c. pink, 3 lire chrome.

Two Sicilies.

ADHESIVE STAMPS.

NAPLES.

1857.—*Name, arms (Horse, three legs conjoined, and three fleur-de-lis), differently surrounded in each stamp. Lake imp., on white paper. Rect.*

¼ grano, 1 gr., 2 gr., 5 gr., 10 gr., 20 gr., 50 gr.

Col.

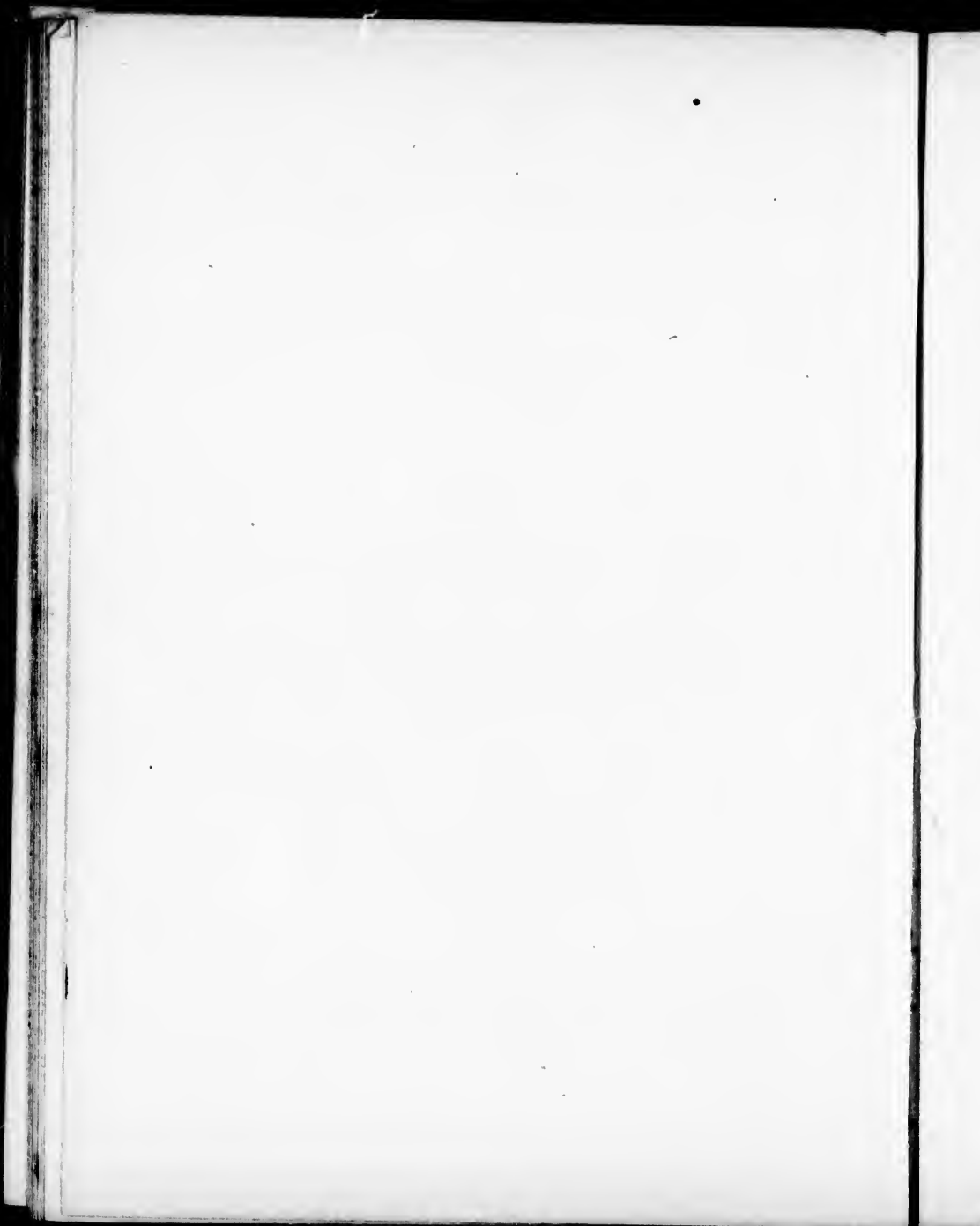
blue,

blue,

(re.).

pink,

*and
each
t.*



PROVISIONAL GOVERNMENT.

Oct., 1860.—*Similar device, square.*

¼ tornese blue.

Nov., 1860.—*Name, arms (Savoy cross), square.*

¼ tornese blue.

SICILY.

1859.—*Name, head of Ferdinand II., to left. Col. imp., rect.*

¼ gr. orange, 1 gr. olive-brown, 2 gr. blue, 5 gr. red, 5 gr. carmine, 10 gr. deep blue, 20 gr. blue-black, 50 gr. red-brown.

United States.

ADHESIVE STAMPS.

Name (U. S. Post-office). Col. imp., rect.

5 cents brown (head of Franklin).

10 cents black (head of Washington).

Name (U. S. P. O. dispatch) eagle in oval. Col. imp., oblong.

1 cent prepaid, blue.

1857.—*Name (U. S. Postage) at top, and each stamp different head and design. Col. imp., rect.*

1 cent blue, 3 c. carmine, 5 c. brown, 10 c. green, 12 c. black, 24 c. lilac, 30 c. orange, 90 c. blue.

1861.—*Name (U. S. Postage) at top, and U. S. at the bottom of each stamp, different heads and designs, Col. imp., rect.*

1 cent blue, 3 c. pale carmine, 5 c. light brown, 10 c. green, 12 c. black, 24 c. lilac, 30 c. orange 90 c. blue.

ENVELOPE STAMPS.

Head in relief to left. Col. imp., on white paper, large oval.

3 cents red, 6 cents red, 6 cents green, 10 cents green.

Similar device. Col. imp., on yellow paper.

3 cents red, 6 cents red, 6 cents green, 10 cents green.

1860.—*Head in relief to left, in oval bordering, containing value and U. S. postage in relief. Col. imp., on white paper, small oval.*

3 cents vermilion, 6 cents vermilion, 10 cents green.

Similar device. Col. imp. on yellow paper, small oval.

3 cents vermilion, 6 cents vermilion, 10 c. green.

1861.—*Similar device, head in relief, to right. Col. imp., on yellow paper, small oval.*

1 cent blue.

*S. at the
d designs,*

a. 12 c. black,

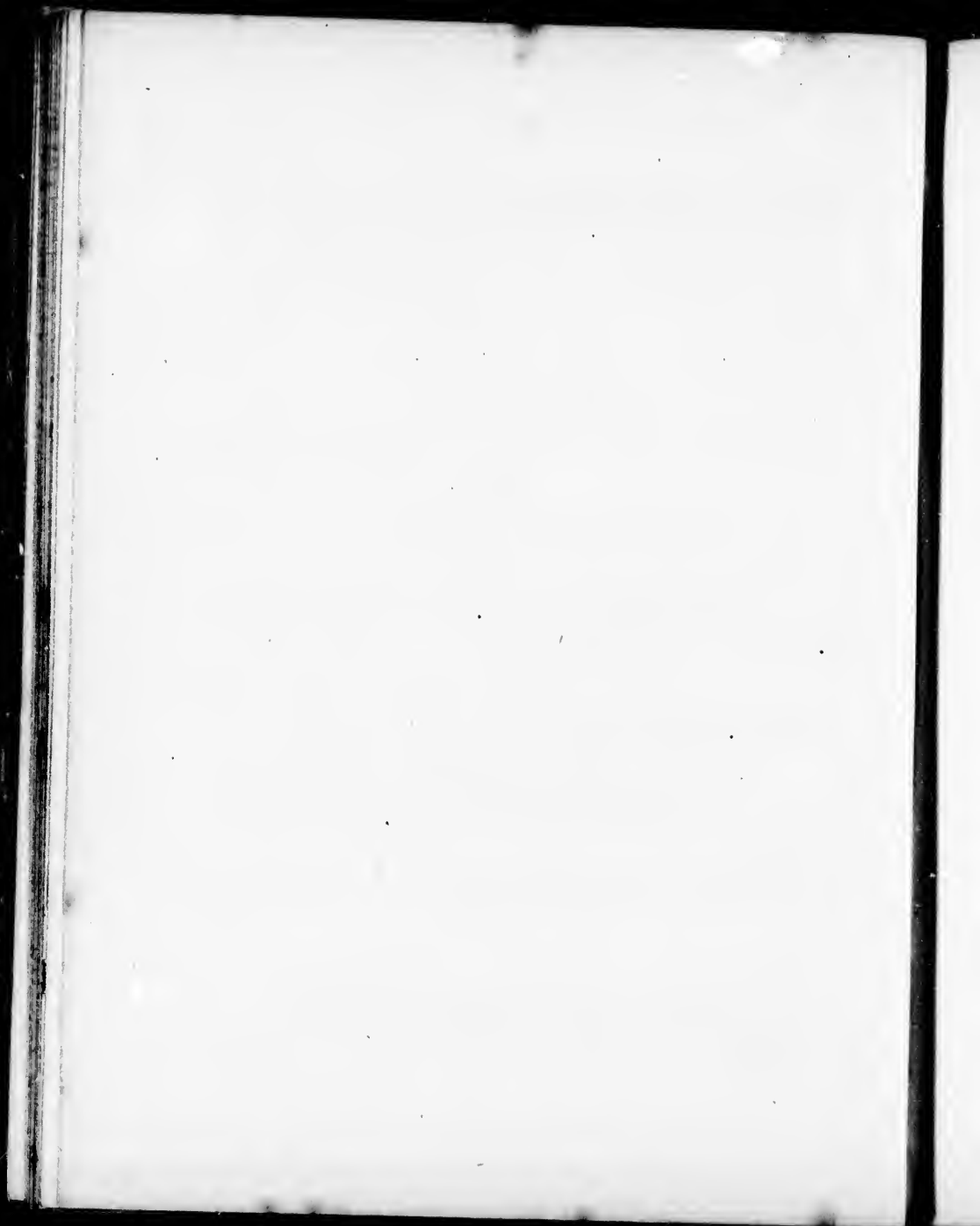
ver, large

per.

*ing, con-
ef. Col.*

nall oval.

t. Col.



Head in relief to left, in oval bordering, bearing "United States," and value in circle on each side. Col. imp., on white paper, oval.

3 cents rose, 4 cents (composed of the 3 c. and 1 c. stamps on same envelope), 6 cents rose.

Same device on yellow paper.

3 cents rose, 4 cents (composed of the 3 c. and 1 c. stamps on same envelope), 6 cents rose.

Head in relief, to left, in oval, value in words, over Head, and name (U. S. Postage) at bottom. Value in figures each side in circle. Elliptical.

10 cents green, on white paper. 10 cents green, on yellow paper.

Similar device. Impression in two colours on yellow paper.

12 cents brown and red, 20 cents blue and red, 24 cents green and red, 40 cents red and black.

LOCAL STAMPS.

ALBANY. Thompson and Co., American express. Black on green.

American express company postage. 2 c. paid.

American letter Mail Co. Eagle to right. Black imp. 20 for a dollar.

Avenue, 8th Post-Office, paid. Square. Red on white.

BALTIMORE. *Adam's Express Co.* Green on yellow.

„ *Carrier's dispatch.* 1 cent.

„ *Griffin's dispatch.* 1 cent black,
1 cent red.

„ *Government City dispatch (courier)*
oblong. 1 cent pink. 1 cent black.

„ *Stringer and Morton's City dispatch,*
oblong. Black on brown.

BOSTON. *Chewert towle, 7, State Street, City letter*
delivery, round. 2 cents blue.

„ *Hale and Co., octagon.* Blue.

Boyce's city express, oval. 2 cents black on green.

Boyd's city express post. Eagle on globe. Black
imp. on col. paper, oval. 1 cent
lilac, 1 c. violet, 1 c. green, 1 c.
light green, 2 c. green, 2 c.
dark green, 2 c. deep orange,
3 c. green.

„ *Similar device. Col. imp. on*
white paper. 2 cents gold, 2
cents red, 2 cents gold on red.

ellow.

black,

urrier)
black.

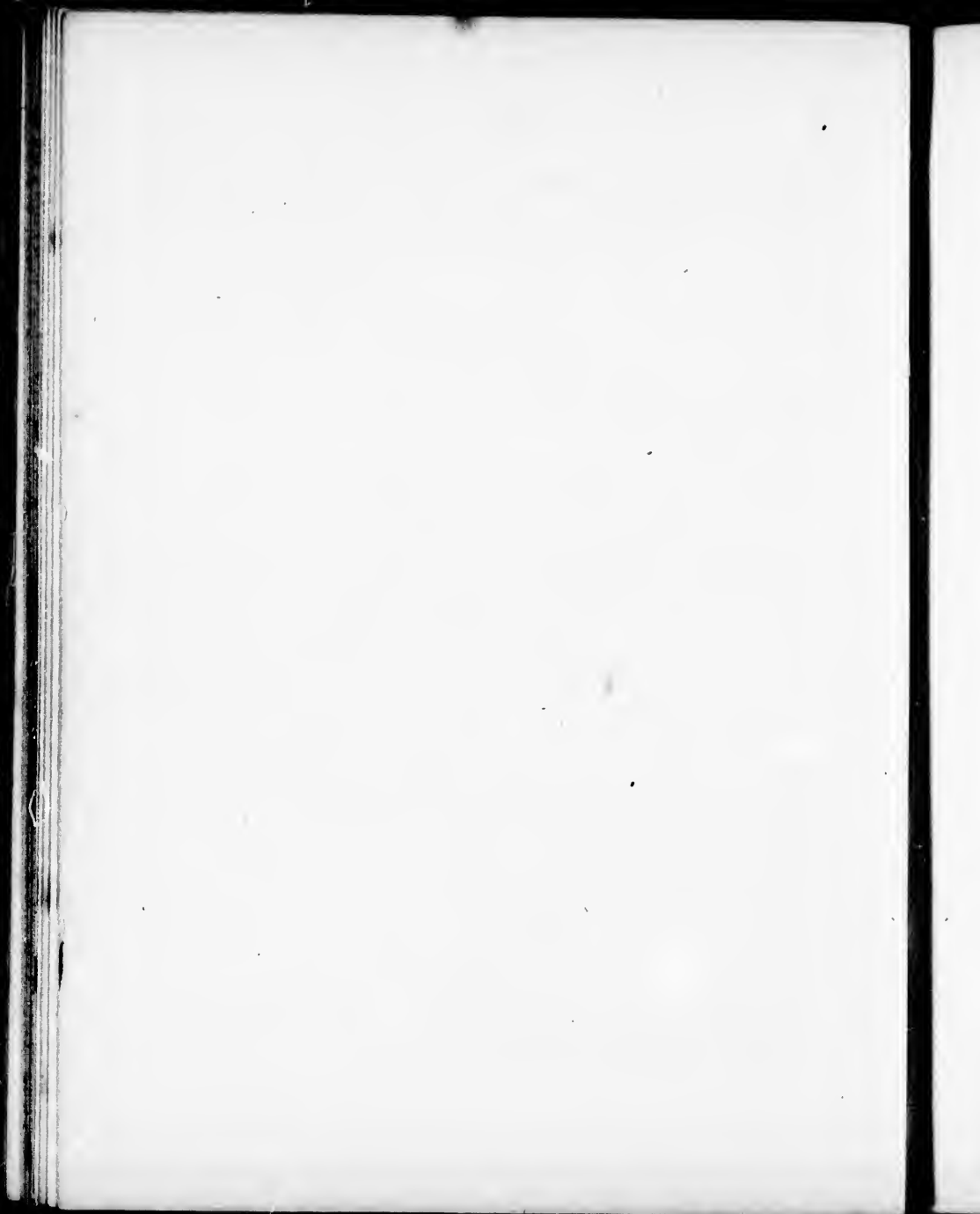
atch,

letter

en.

Black
cent
a, 1 c.
2 c.
ange,

. on
ld, 2
a red.



Brady and Co. 1 cent.

Broadway Post-Office, (steam-engine). Black imp., oblong.

Brooklyn city express post, dove in oval. Black imp. on col. paper, rect. 2 cents rose, 2 c. crimson.

Brown and Co., city post. Rect. 1 cent, 2 cents.

Carrier's dispatch, oblong. 1 cent rose.

City dispatch post, 2 cents black. 2 c. green.

City dispatch delivery (woman holding a balance). Black imp., oval. 1 cent.

City express post. Black imp., rect. 1 cent, 2 cents.

Compagnie Franco-Americaine (ship) oblong. Red.

Cornwell's P. O. (portrait), rect. Pink on white.

East River P. O. (steamship in oval), oblong. Black on green.

Essex letter express. 2 cents.

Floyd's penny post (head to left). Black, blue.

Gordon's city express. 2 cents black on green, 2 c. black on white.

Hanford's Pony express post. 2 cents black.

Hanley's express post letter stamp. 1 cent green,
1 cent black.

Honour's city post. Blue, black on yellow.

Hourly express post. 1 cent.

Hussey's bank and insurance city post. Rect. Black
on white, black on yellow, carmine on white.
Pink on white.

Hussey's bank and insurance notice delivery office.
1 cent blue.

Hussey's city post. Rect. 1 cent vermilion.

McIntyre's city express post (Mercury), rect. 2 cents
carmine.

Money package American express.

Newburg American express Co.

NEW JERSEY. *Express Co. Head of horse in relief.*
Oval. Green on yellow.

NEW YORK. *Post-office, head in oval. Large rect.*
5 cents black.

„ *Metropolitan, Errand and Carrier ex-*
press Co., large shield. 1 cent. 5 c.,
10 c., 20 c. red, 1 c., 5 c., 10 c.,
20 c. blue.

„ *Similar device in relief.* 2 cents red.

„ *Post-office express to the mail. Small*
shield. 1 cent rose, 1 c. green.

een,
ack.

ack
nite.

ffice.

ents

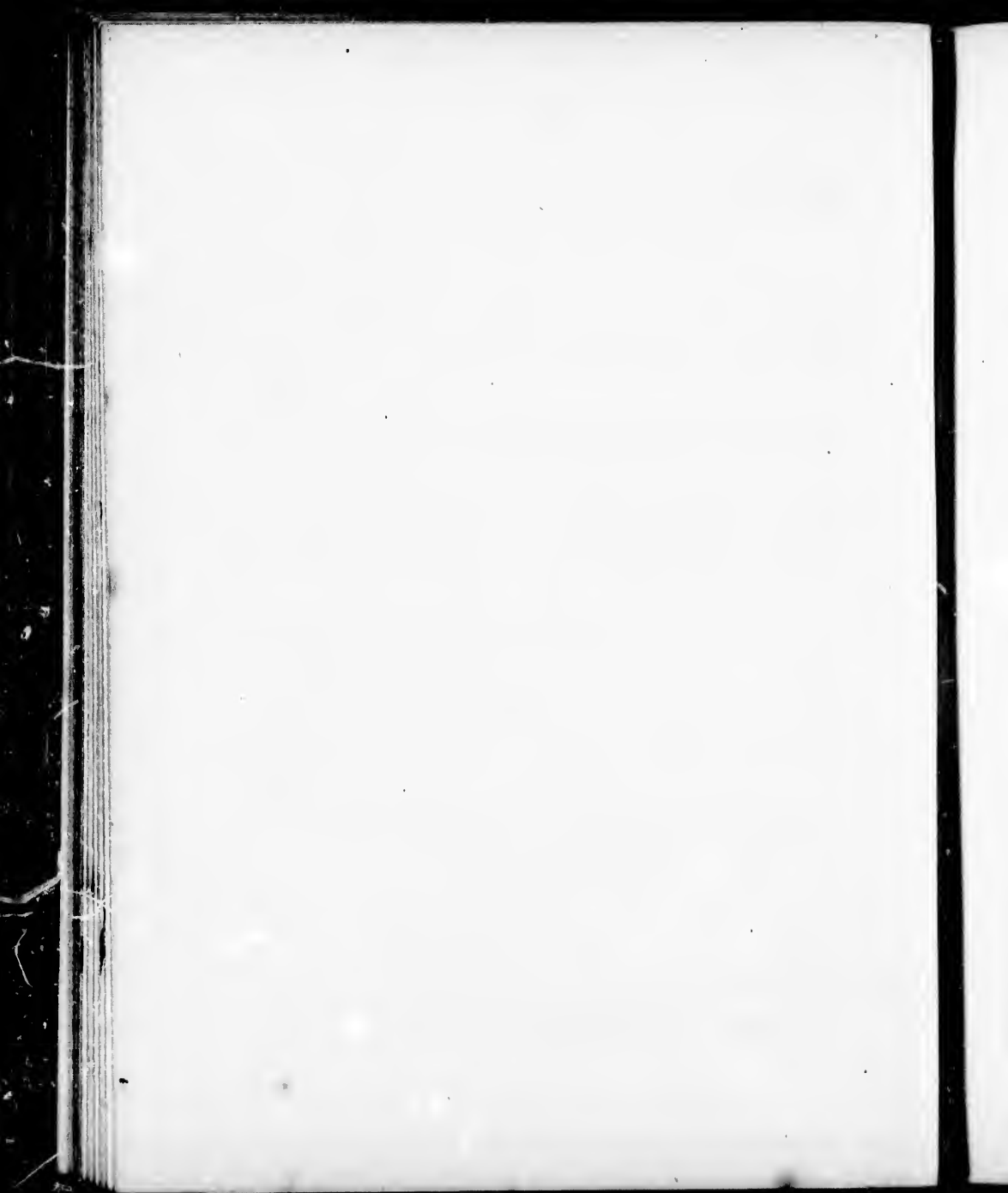
lief.

rect.

ex.
5 c.,
c.,

ed.

nall



PHILADELPHIA. *Blood's penny post.* Small oblong.
 " " " Oval.
 " " " Rect.
 " *Teese and Co., penny post.* Blue.

Post-office dispatch, small oblong. 1 cent blue.

Price's city express post. 2 cents black on red,
 2 c. black on green.

Russell's post-office (head to right), oct. Black on
 green.

Russell's post-office (head in oval), rect. Dark green
 on green, red on pink.

Smith's city express post. 2 cents paid.

Souter & Co.'s, city letter dispatch, 1 cent.

Squier & Co.'s, city letter dispatch, (dove) rect. 1 cent
 rose, 1 cent green, 2 cents green, 2 cents red.

Steinmeyer's city post-paid. 2 cents rose, 2 c. yellow.

Swart's city dispatch post (bust) rect. Light brown,
 pink, black.

Swart's for U.S. mail. Blue imp., square. 1 cent
 prepaid.

Swart's rough and ready dispatch. Rect., red.

Warwick's city dispatch, small. 2 cents carmine,
 2 c. yellow : *large,* 2 c. yellow.

Washington city dispatch (Courier), rect. 1 c. lilac.
1 c. brown.

Wells, Fargo & Co., Pony express (man on horse), rect.
1 dollar red, 2 dol. pink, 2 dol. green, 4 dol. green.

Wells, Fargo & Co., Pony express (name in garter).
 $\frac{1}{2}$ oz. 1 dollar blue.

Venezuela.

ADHESIVE STAMPS.

1859.—*Name, arms on ground, composed of perpendicular col. lines, motto "Libertad." Col. imp. on blue paper, small rect.*

$\frac{1}{4}$ real yellow, 1 rl. blue, 2 rl. red.

1860.—*Similar device on white paper.*

$\frac{1}{4}$ real yellow, 1 rl. blue, 2 rl. red.

1862.—*Similar device, arms on white ground, larger rect.*

Cuarto centavo green, un centavo brown.

Victoria.

ADHESIVE STAMPS.

Name, portrait of Queen Victoria. Col. imp., rect.

1d. rose, 2d. cinnamon, 3d. blue, 4d. carmine.

Queen on throne. Col. imp., rect.

2d. mauve (wood-block), 2d. brown (die).

. lilac.

e), *rect.*

green.

quarter).

perpen-

Col.

, *larger*

, *rect.*



Name, Queen on throne. Col. imp., rect.

1d. green, 6d. blue.

Name, head of Queen Victoria to left, in oval border, containing value. Rect. Devices in each corner of stamp.

1d. green, 2d. lilac, 4d. pink, 4d. dark red.

Similar to last, without devices in corners.

1d. green.

Name, head of Queen Victoria to left, words "Postage Stamp" each side. Col. imp., rect.

6d. yellow, 6d. black, 2s. green.

Name, head of Queen Victoria to left, in oval. Figures indicating value in small oval, each side. Col. imp., rect.

3d. blue, 4d. rose, 6d. yellow, 6d. black.

Name, head of Queen Victoria to left, in circle. Col. imp. Oct.

1s. blue.

Name, head of Queen Victoria to left. Col. imp., rect.

TOO LATE, 6d. lilac and green.
REGISTERED, 1s. blue and rose.

ESSAY.

Name, Queen on throne. Rect.

6d. black.

Western Australia.

ADHESIVE STAMPS.

Name, arms (Swan). Col. imp.

1d. black (oblong), 2d. chocolate, on red (oct.), 4d. blue (oct.).
6d. bronze (oct.), 1s. marone (ellipse).

1861.—*Similar device, oblong.*

1d. pink, 2d. orange, 6d. violet-carmine, 6d. green.

1862.—*Similar device.*

2d. blue, 4d. rose, 6d. black, 1s. green.

ESSAYS.

Similar device.

4d. black (oct.), 1s. black (oct.).

Württemberg.

ADHESIVE STAMPS.

1850.—*Name, figure indicating value, in diamond.*

Black imp., square.

1 kreuzer white, 3 kr. yellow, 6 kr. green, 9 kr. rose, 18 kr. neutral.

1860.—*Arms (shield, &c., supported by lion and stag). Col. imp., square.*

1 kreuzer brown, 3 kr. orange, 6 kr. green, 9 kr. rose, 18 kr. blue.

Arms (shield and crown), wreathed, in oval. Black imp., square.

Commission für retourbriefe (used for returned letters).

ESSAYS.

1860.—*Similar device to issue of 1850.*

3 kreuzer blue, 6 kr. blue.

ond.

utral.

n and

lue.

Black

Austr
Belgi
Braz
Brem
Olden
Brun
Hano
Denm
Great

Greec
Hamb
Lubec
Germ

Holla
"
India

Italy
Lomb
and

Meck

Norw
North
Naple
Peru

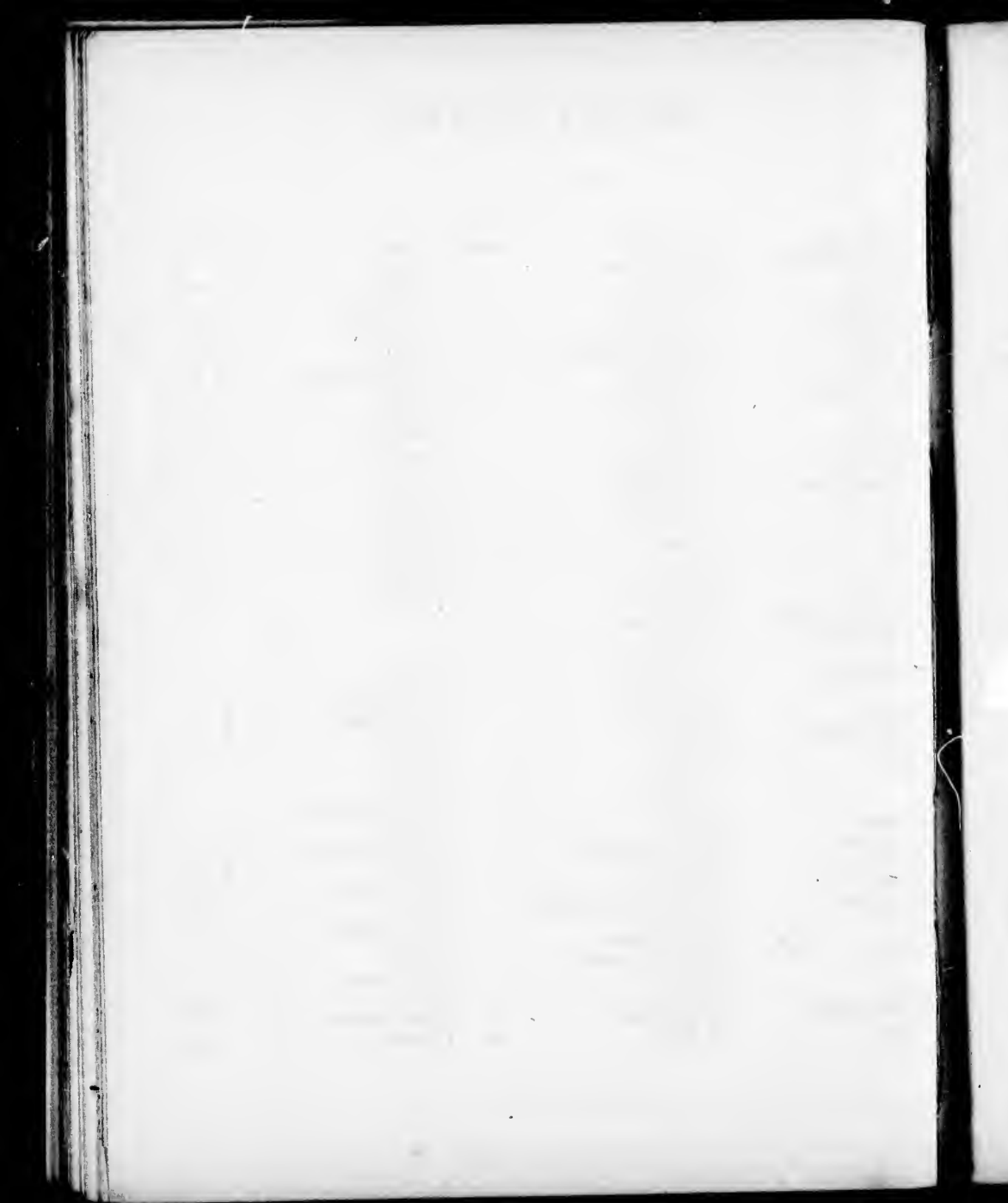
"
"
Portu
Pruss
Papa
Russ
Switz
Saxo

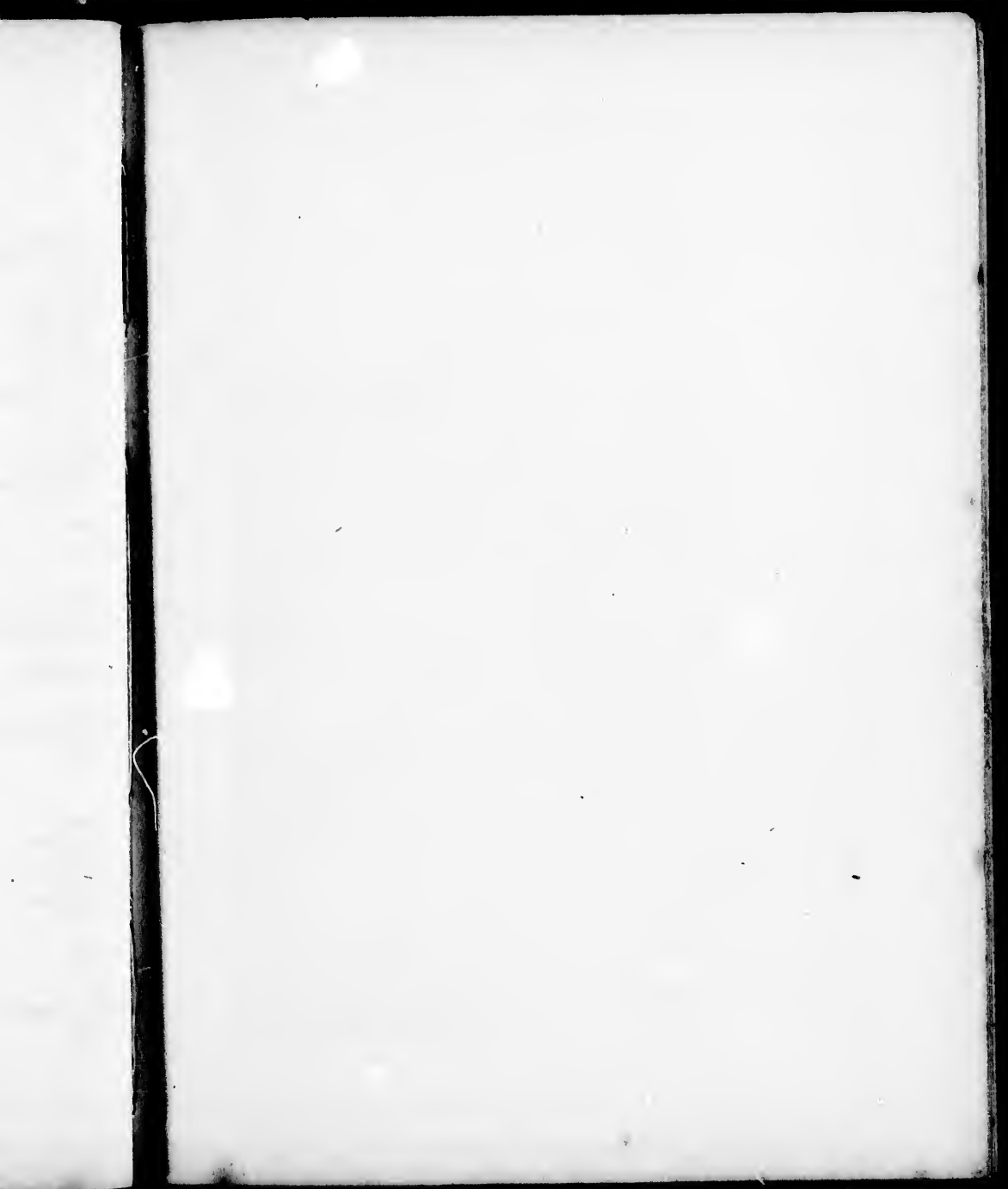
Swed

Spain
outl
Turk

MONEY TABLE.

				<i>s. d.</i>
Austria, &c.	100 kreuzer	equal	1 florin	equal 2 0
Belgium, France	100 centimes		1 franc	" 9½
Brazil	1000 reis	"	1 milreis	" 3 6
Bremen }	5 schwaren	"	1 grote	" "
Oldenburg }	72 grotes	"	1 rix dollar	" 3 3½
Brunswick }	12 pfennigen	"	1 groschen	" "
Hanover }	24 gute groschen	"	1 thaler	" 2 11
Denmark	96 skilling	"	1 rigsbank daler	" 2 3
Great Britain	4 farthings	"	1 penny	" "
"	12 pence	"	1 shilling	" 1 0
Greece "	100 lepta	"	1 drachmi	" 8½
Hamburg }	12 pfennings	"	1 schilling	" "
Lubeck }	16 schilling	"	1 mark	" 1 5½
German States	4 pfennige	"	1 kreuzer	" "
"	60 kreuzer	"	1 florin	" 1 8
Holland	5 cents	"	1 stiver	" "
"	20 stivers	"	1 florin	" 1 8
India	12 pie	"	1 anna	" "
"	16 annas	"	1 rupee	" 2 0
Italy, &c.	100 centesimi	"	1 lira	" 9½
Lombardo-Venetia	100 centesimi	"	"	" "
and Tuscany	20 soldi	"	"	" 8
"	12 crazie	"	"	" "
Mecklenburg	12 piennige	"	1 schilling	" "
"	24 schilling	"	1 neu thaler	" 2 3
Norway	120 skilling	"	1 specie daler	" 4 5
North America	100 cents	"	1 dollar	" 4 2
Naples	100 grani	"	1 ducat	" 3 4
Peru	1 dinero	"	1 real	" "
"	1 peseta	"	2 reales	" "
"	8 reales	"	1 peso or dollar	" 4 2
Portugal	1000 reis	"	1 milreis	" 4 8
Prussia, &c.	30 silb. groschen	"	1 dollar or thaler	" 2 11
Papal States	100 bajocchi	"	1 scudo	" 4 2½
Russia	100 kopecs	"	1 silver rouble	" 3 1½
Switzerland	100 rappen or centimes	"	1 franc	" 9½
Saxony	10 pfennige	"	1 neu groschen	" "
"	30 neu groschen	"	1 thaler	" 3 0
Sweden	48 skilling banco	"	1 daler	" 1 8
"	100 ore	"	1 rix dollar	" 1 1
Spain	16 cuartos	"	1 real	" 2½
South America	100 centavos	"	1 peso or dollar	" 4 0
Turkey	40 paras	"	1 piastre	" 2½



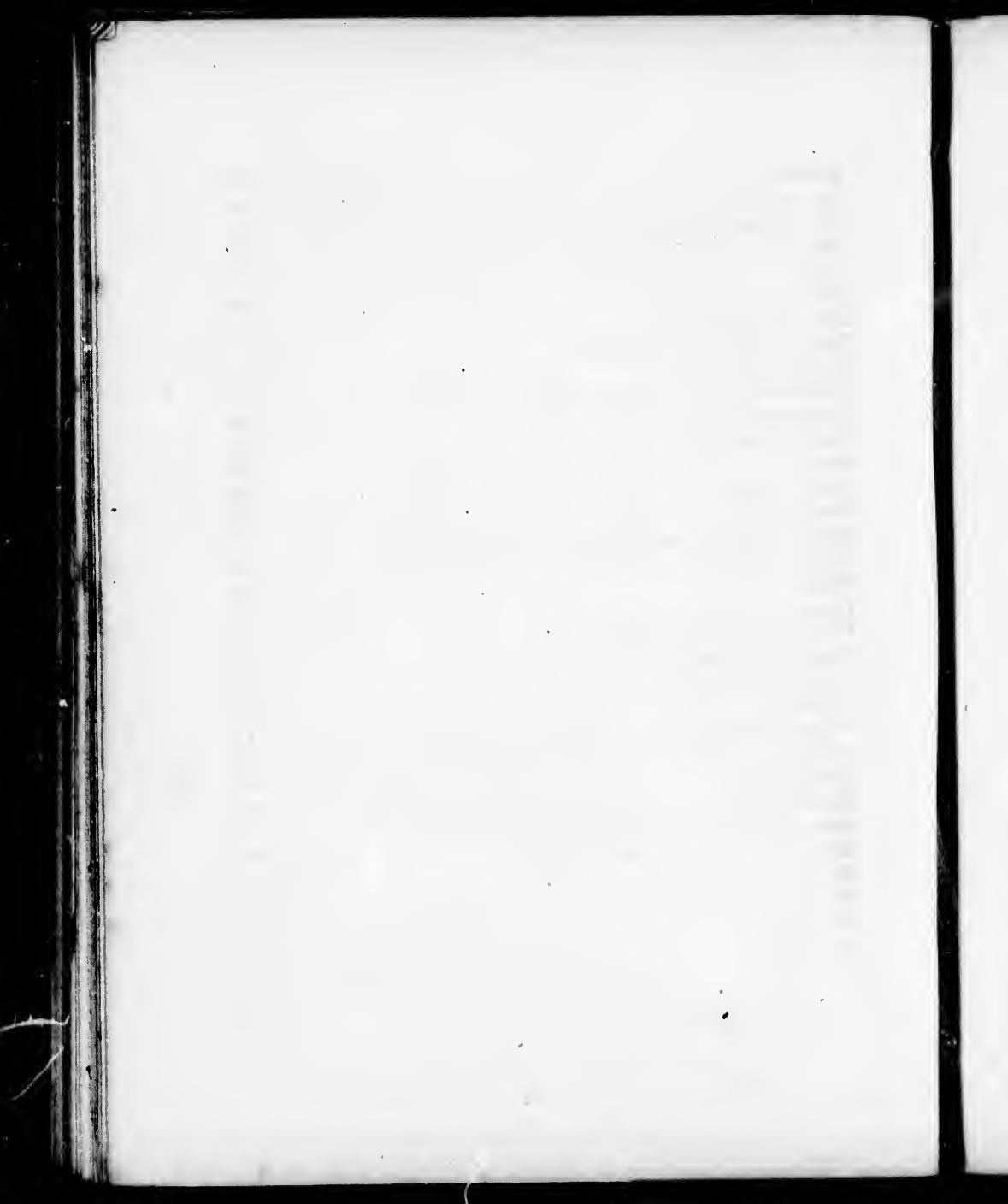


I N D E X.

	Page.
Argentine Confederation - - -	1
Anhalt-Bernbourg (see Prussia) - - -	43
Anhalt-Coethem (see Prussia) - - -	43
Anhalt-Dessau (see Prussia) - - -	43
Austria - - -	1
Austrian Italy - - -	4
Baden - - -	4
Bahamas - - -	5
Barbados - - -	6
Bavaria - - -	6
Belgium - - -	7
Bergedorf - - -	7
Birkenfeld (see Prussia) - - -	43
Brazil - - -	7
Bremen - - -	8
British Columbia - - -	9
British Guiana - - -	9
Brunswick - - -	10
Buenos Ayres - - -	10
Canada - - -	11
Cape of Good Hope - - -	12
Ceylon - - -	12
Chili - - -	13
Confederate States of America - - -	13
Cuba (see Spain) - - -	49
Denmark - - -	14
Dutch Guiana (see Holland) - - -	26
England (see Great Britain) - - -	20

Finland (see Russia)	-	-	-	-	-	45
France	-	-	-	-	-	15
Frankfort (see South Germany)	-	-	-	-	-	18
Germany (North and South)	-	-	-	-	-	17
Granada Confederation	-	-	-	-	-	19
Great Britain	-	-	-	-	-	20
Greece	-	-	-	-	-	23
Grenada	-	-	-	-	-	24
Hamburg	-	-	-	-	-	24
Hanover	-	-	-	-	-	25
Hayti (see Spain)	-	-	-	-	-	49
Hesse-Cassel (see North Germany)	-	-	-	-	-	17
Hesse-Darmstadt (see South Germany)	-	-	-	-	-	18
Hesse-Homburg (see South Germany)	-	-	-	-	-	18
Hohenzollern-Hechingen (see South Germany)	-	-	-	-	-	18
Hohenzollern-Sigmaringen (see South Germany)	-	-	-	-	-	18
Holland	-	-	-	-	-	26
Honolulu (see Sandwich Islands)	-	-	-	-	-	47
India	-	-	-	-	-	27
Ionian Islands	-	-	-	-	-	28
Italy	-	-	-	-	-	28
Jamaica	-	-	-	-	-	29
La Plata (see Argentine Confederation)	-	-	-	-	-	1
Liberia	-	-	-	-	-	29
Lippe-Detmold (see North Germany)	-	-	-	-	-	17
Lippe-Schauenburg (see North Germany)	-	-	-	-	-	17
Lombardy (see Austrian Italy)	-	-	-	-	-	4
Lubeck	-	-	-	-	-	30
Luxembourg	-	-	-	-	-	30
Luzon (see Spain)	-	-	-	-	-	49
Malta	-	-	-	-	-	30
Mauritius	-	-	-	-	-	31
Mecklenburg-Schwerin	-	-	-	-	-	32
Mecklenburgh-Strelitz (see North Germany)	-	-	-	-	-	17
Mexico	-	-	-	-	-	32
Modena	-	-	-	-	-	33

45
15
18
17
19
20
23
24
24
25
49
17
18
18
18
26
47
27
28
28
29
1
29
17
17
4
30
30
49
30
31
32
17
32
33



Moldavia	-	-	.	-	-	33
Monte Video	-	-	-	-	-	34
Naples (see Two Sicilies)	-	-	-	-	-	56
Nassau (see South Germany)	-	-	-	-	-	18
Natal	-	-	-	-	-	34
Nevis	-	-	-	-	-	34
New Brunswick	-	-	-	-	-	35
New Caledonia (see France)	-	-	.	-	-	15
Newfoundland	-	-	-	-	-	35
New Granada (see Granada Confederation)	-	-	-	-	-	19
New South Wales	-	-	-	-	-	36
New Zealand	-	-	-	-	-	37
Norway	-	-	-	-	-	38
Nova Scotia	-	-	-	-	-	38
Oldenburg	-	-	-	-	-	39
Pacific Steam Navigation Company (see Peru)	-	-	-	-	-	41
Papal States	-	-	-	-	-	40
Parma	-	-	-	-	-	40
Peru	-	-	-	-	-	41
Philippine Islands (see Spain)	-	-	-	-	-	49
Poland (see Russia)	-	-	-	-	-	45
Porto Rico (see Spain)	-	-	.	-	-	49
Portugal	-	-	-	-	-	42
Prince Edward Island	-	-	-	-	-	43
Prussia	-	-	-	-	-	43
Queensland	-	-	-	-	-	44
Romagne	-	-	-	-	-	45
Reuss-Elder & Younger (see North Germany)	-	-	-	-	-	17
Roman States (see Papal States)	-	-	-	-	-	40
Russia	-	-	-	-	-	45
St. Croix (see Denmark)	-	-	-	-	-	14
St. Helena	-	-	-	-	-	46
St. Lucia	-	-	-	-	-	47
St. Thomas (see Denmark)	-	-	-	-	-	14
St. Vincent's	-	-	-	-	-	47
Sandwich Islands	-	-	.	-	-	47

Sardinia (see Italy)	-	-	-	-	-	28
Saxe-Altenburg (see North Germany)	-	-	-	-	-	17
Saxe-Coburg Gotha (see South Germany)	-	-	-	-	-	18
Saxe-Meningen (see South Germany)	-	-	-	-	-	18
Saxe-Weimar (see North Germany)	-	-	-	-	-	17
Saxony	-	-	-	-	-	48
Schleswig-Holstein (see Denmark)	-	-	-	-	-	14
Schwarzburg-Sondershausen (see North Germany)	-	-	-	-	-	17
Schwarzburg-Rudolstadt (see North Germany)	-	-	-	-	-	17
Sicily (see Two Sicilies)	-	-	-	-	-	56
Sierra Leone	-	-	-	-	-	48
South Australia	-	-	-	-	-	49
Spain	-	-	-	-	-	49
States of the Church (see Papal States)	-	-	-	-	-	40
Sweden	-	-	-	-	-	52
Switzerland	-	-	-	-	-	52
Tasmania	-	-	-	-	-	55
Thurn u. Taxis (see Germany)	-	-	-	-	-	17
Trinidad	-	-	-	-	-	55
Tuscany	-	-	-	-	-	56
Two Sicilies	-	-	-	-	-	56
United States	-	-	-	-	-	57
Uruguay (see Monte Video)	-	-	-	-	-	34
Vancouver's Island (see British Columbia)	-	-	-	-	-	9
Van Diemen's Land (see Tasmania)	-	-	-	-	-	55
Venezuela	-	-	-	-	-	64
Venetia (see Austrian Italy)	-	-	-	-	-	4
Victoria	-	-	-	-	-	64
Waldeck (see Prussia)	-	-	-	-	-	43
Western Australia	-	-	-	-	-	65
Wurtemberg	-	-	-	-	-	66

28
17
18
18
17
48
14
17
17
56
48
49
49
40
52
52
55
17
55
56
56
57
34
9
55
64
4
64
43
65
66

