

**CIHM
Microfiche
Series
(Monographs)**

**ICMH
Collection de
microfiches
(monographies)**



Canadian Institute for Historical Microreproductions / Institut canadien de microreproductions historiques

© 1998

Technical and Bibliographic Notes / Notes techniques et bibliographiques

The institute has attempted to obtain the best original copy available for filming. Features of this copy which may be bibliographically unique, which may alter any of the images in the reproduction, or which may significantly change the usual method of filming are checked below.

- Coloured covers / Couverture de couleur
- Covers damaged / Couverture endommagée
- Covers restored and/or laminated / Couverture restaurée et/ou pelliculée
- Cover title missing / Le titre de couverture manque
- Coloured maps / Cartes géographiques en couleur
- Coloured ink (i.e. other than blue or black) / Encre de couleur (i.e. autre que bleue ou noire)
- Coloured plates and/or illustrations / Planches et/ou illustrations en couleur
- Bound with other material / Relié avec d'autres documents
- Only edition available / Seule édition disponible
- Tight binding may cause shadows or distortion along interior margin / La reliure serrée peut causer de l'ombre ou de la distorsion le long de la marge intérieure.
- Blank leaves added during restorations may appear within the text. Whenever possible, these have been omitted from filming / Il se peut que certaines pages blanches ajoutées lors d'une restauration apparaissent dans le texte, mais, lorsque cela était possible, ces pages n'ont pas été filmées.
- Additional comments / Commentaires supplémentaires:

L'institut a microfilmé le meilleur exemplaire qu'il lui a été possible de se procurer. Les détails de cet exemplaire qui sont peut-être uniques du point de vue bibliographique, qui peuvent modifier une image reproduite, ou qui peuvent exiger une modification dans la méthode normale de filmage sont indiqués ci-dessous.

- Coloured pages / Pages de couleur
- Pages damaged / Pages endommagées
- Pages restored and/or laminated / Pages restaurées et/ou pelliculées
- Pages discoloured, stained or foxed / Pages décolorées, tachetées ou piquées
- Pages detached / Pages détachées
- Showthrough / Transparence
- Quality of print varies / Qualité inégale de l'impression
- Includes supplementary material / Comprend du matériel supplémentaire
- Pages wholly or partially obscured by errata slips, tissues, etc., have been refilmed to ensure the best possible image / Les pages totalement ou partiellement obscurcies par un feuillet d'errata, une pelure, etc., ont été filmées à nouveau de façon à obtenir la meilleure image possible.
- Opposing pages with varying colouration or discolourations are filmed twice to ensure the best possible image / Les pages s'opposant ayant des colorations variables ou des décolorations sont filmées deux fois afin d'obtenir la meilleure image possible.

This item is filmed at the reduction ratio checked below / Ce document est filmé au taux de réduction indiqué ci-dessous.

	10x		14x		18x		22x		26x		30x	
									/			
	12x		16x		20x		24x		28x		32x	

The copy filmed here has been reproduced thanks to the generosity of:

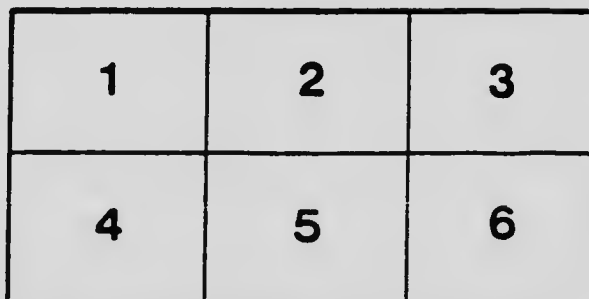
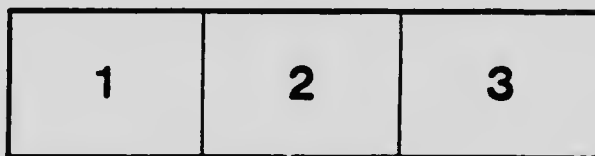
British Columbia Archives and Records Service.

The images appearing here are the best quality possible considering the condition and fragility of the original copy and in keeping with the filming contract specifications.

Original copies in printed paper covers are filmed beginning with the front cover and ending on the last page with a printed or illustrated impression, or the back cover when appropriate. All other original copies are filmed beginning on the first page with a printed or illustrated impression, and ending on the last page with a printed or illustrated impression.

The last recorded frame on each microfiche shall contain the symbol \rightarrow (meaning "CONTINUED"), or the symbol ∇ (meaning "END"), whichever applies.

Maps, plates, charts, etc., may be filmed at different reduction ratios. Those too large to be entirely included in one exposure are filmed beginning in the upper left hand corner, left to right and top to bottom, as many frames as required. The following diagrams illustrate the method:



L'exemplaire filmé fut reproduit grâce à la générosité de:

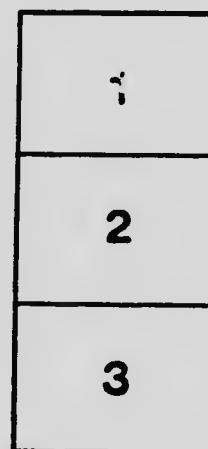
British Columbia Archives and Records Service.

Les images suivantes ont été reproduites avec le plus grand soin, compte tenu de la condition et de la netteté de l'exemplaire filmé, et en conformité avec les conditions du contrat de filmage.

Les exemplaires originaux dont la couverture en papier est imprimée sont filmés en commençant par la première page et en terminant soit par la dernière page qui comporte une empreinte d'impression ou d'illustration, soit par la seconde page, selon le cas. Tous les autres exemplaires originaux sont filmés en commençant par la première page qui comporte une empreinte d'impression ou d'illustration et en terminant par la dernière page qui comporte une telle empreinte.

Un des symboles suivants apparaîtra sur la dernière image de chaque microfiche, selon le cas: le symbole \rightarrow signifie "A SUIVRE", le symbole ∇ signifie "FIN".

Les cartes, planches, tableaux, etc., peuvent être filmés à des taux de réduction différents. Lorsque le document est trop grand pour être reproduit en un seul cliché, il est filmé à partir de l'angle supérieur gauche, de gauche à droite, et de haut en bas, en prenant le nombre d'images nécessaire. Les diagrammes suivants illustrent la méthode.



NWp
285.711
M592:

Second Annual British Columbia Conference Coast Summer School

Souvenir
Handbook

Official
Programme



Including this year
"Conference
Epworth
League and
Sunday
School
Convention."

Columbian Methodist College, New Westminster, B. C., July 3-8, 1906

Columbian College



*Do You
Want?*

1. A University Degree ?
2. A Teacher's Certificate ?
3. A Business Course ?
4. Lessons in Music ?
5. Instruction in Arts ?
6. Matriculation in Arts, Medicine, Engineering, &c. ?
7. Course in Science, Mining and Assaying ?

Come to us. Rates for Board, \$16.00 per month; Rates for Tuition, \$4.00 per month and upward



APPLY TO

Rev. W. J. Sipprell, B. A., D. D., Principal

Summer Handbook and Official Program

OF THE

SECOND ANNUAL BRITISH COLUMBIA CONFERENCE COAST SUMMER SCHOOL

Including the Conference Epworth League and Sunday School Convention

HELD AT

COLUMBIAN METHODIST COLLEGE, NEW WESTMINSTER, B. C.

Commencing 2 p. m. July 3rd, concluding 10 p. m. July 8th, 1906.

Index to Contents

	Page
Summer School Program.....	12-13
Railway and Boat Information	5
Tramway (Special Rates)	16
General Information.....	3

ILLUSTRATIONS:

	Cover
Columbian College	Cover
College Tennis Court	6
Queen's Ave. Methodist Church	7
Beautiful Homes, New Westminster	9
West End Methodist Church	11
New Exhibition Buildings	14
Superton Methodist Church	19
Million Dollar Bridge.....	21
Bridal Veil Falls, Pitt River.	23
Typical Fraser Valley Hayfield.....	24



Index to Advertisements

	Page
Bank—Royal Bank	22
Baker—L. L. Gardhouse	17
Books—J. J. MacKay	8
—H. Morey & Co.	21
Coal—Gilley Bros.	19
College—Columbian	Cover
Drugs—D. S. Curtis	7
Dry Goods—W. S. Collister	10
Exhibition—Provincial	6
Furniture—J. Lee	1
Gents' Furnishings—W. Cunningham	2
—H. L. DeBeck	Cover
Groceries—Geo. Adams	Cover
—C. A. Welsh	11
Ice Cream—Westminster Creamery	8
Insurance—A. E. White	17
Jeweler—W. C. Chamberlin	10
Newspapers—Columbian	18
—World	20
Photographer—J. C. Cornish	4
Pianos—J. H. Todd	16
Real Estate—T. R. Pearson	9
Sporting Goods—A. Speck	17
Tram Co. B. C. E. R.	16
Restaurant—Mrs. Cook	11
—J. M. Kenny	8

Fit-Rite

FIT-RITE CLOTHING

Is Made To Fit Like Tailored Garments

Fit-Rite

Haberdashery

A look will convince
you of its quality
and merits.



Summer Underwear

All the Best Makes
in Stock.

Fit-Rite

WILLIAM CUMMING

Corner Columbia and Begbie Streets

Agent for the Celebrated Fit-Rite

Fit-Rite

Summer School

The decided success of British Columbia's first Summer School last year inspires us to plan for a still larger success this year.

As was expressed by the Conference resolution last year the pre-eminent aim of the Summer School is the systematic study of Bible and Missions in the atmosphere of prayer. This pre-eminent aim was so well realized last year that a splendid impetus was given Bible and Mission study in this Conference and largely increased Missionary subscriptions most naturally resulted. Then again as a substantial result of the initial movement last year, the annual Conference that recently met in Victoria recommended four Summer Schools for the Province this year. This is known as the Coast Summer School and embraces the three Districts of Victoria, Vancouver and Westminster.

One of the chief features of this year's school will be the merging of the Sunday School and Epworth League Convention as an experiment. The executive of the E. L. & S. S. Convention have thought carefully over the matter and in the interests of the young people's work have decided to amalgamate with the Summer School this year and during the sessions call a full meeting of the Executive to decide on future action. Attention is drawn to the fact that this year E. L. & S. delegates are not requested to bring donations to convention as in former years.

There will be no registration fee. Lodging arrangements have been made with the College the same as last year, at the remarkably low rate of one dollar per day, bed and board. (Be sure and bring the following articles: sheets, pillow slips and tow-

els—the same as the students provide for themselves.)

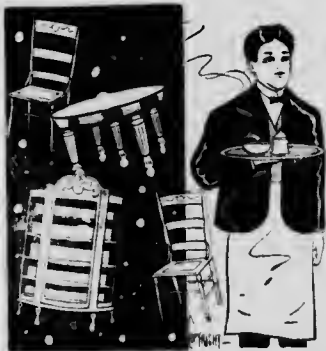
The Summer School is open to all, whether regularly appointed delegates or not, but we want every Sunday School and Epworth League in the three Districts represented. We averaged over 200 delegates per day last year.

Delegates were present from as far East as Toronto and London, and as far South as Denver, Colorado; and California.

We have been fortunate in securing the services this year of Rev. Fletcher L. Wharton, D. D., pastor of First M. E. Church, Seattle, Wash. He is a powerful and energetic speaker and will inspire our Summer School. He is enthusiastic on the Labor and Temperance problems and in these causes has done excellent service for Seattle.

A glance at the program will reveal the splendid talent obtained. We are pleased to announce Rev. Principal S'pprell, B. A., D. D., is giving a systematic course of Bible study lectures on "The Sermon on the Mount."

LEE'S FURNITURE EMPORIUM



Affords excellent opportunity of seeing the LATEST DESIGNS and FINISHES in

FURNITURE,
CARPETS,
LINOLEUMS,
OILCLOTHS,
ETC.

In Large Variety.

ALL AT LOWEST POSSIBLE PRICES

- VISIT -

Lee's Furniture Emporium

DUPONT BLOCK

Columbia Street, - - New Westminster,
B. C.

Have your
Photograph
Taken by



J. C. CORNISH

The Photographer



Stamp Photos, Cabinets, and up to 14 by 17 inches
Enlargements a Specialty

Groups made to any size and framed at lowest prices

GIVE ME A TRIAL

PRICES MODERATE

Note the Address: CURTIS-ARMSTRONG BLOCK

Summer School

(Concluded)

Trains and Steamers

The Torrey-Alexander Revival Hymn books will be used during the summer school.

A splendid line of Missionary books and pamphlets will be on sale at the Book bureau.

In purchasing railway and boat tickets purchase full fare one way and obtain standard certificate from the agent of every line on which you travel. Present this to the secretary at summer school for signature. If there are twenty-five travelling delegates, return will be one-third fare; if 100, return will be free.

Delegates travelling from Vancouver by tram, as per instructions on page 20, obtain a certificate from any Vancouver Methodist pastor, or at Knowlton's drug store, near tram office.

Don't forget to bring notebook and pencil.

Make the college your home while in city.

C. P. R. MAIN LINE.

Leave New Westminster 7.25 daily.
Leave New Westminster 17.20 daily.
Arrive New Westminster 10.30 daily.
Arrive New Westminster 19.10 daily.

C. P. R. MISSION BRANCH.

Lv. N. W. 7.25, Ar. Seattle 15.50.
Lv. Seattle, 12.30; Ar. N. W. 20.20.

C. P. R. WESTMINSTER JUNCTION.

Lv. N. W. 7.25, 9.35, 17.20, 19.25.
Ar. N. W. 9.15, 10.30, 19.10, 20.20

GREAT NORTHERN RAILWAY.

Lv. N. W. 9.20 a.m.; Ar. Seattle 4 p.m.
Lv. N. W. 1.35 p.m.; Ar. Seattle 10 p.m.
Lv. Seattle 8.30 a.m.; Ar. N. W. 3 p.m.
Lv. Seattle, 4.34 p.m.; Ar. N. W. 9.35 p.m.

V. W. — Y.—VANCOUVER.

Lv. N. W. 3 p.m. and 9.35 p.m.
Lv. Vancouver 8.35 a.m., and 4 p.m.

G. N. R.—PORT GUICHON.

Lv. N. W. 9.20 am; Ar Guichon 2.20 p.m.
Lv. Guichon 2.40 p.m.; Ar. N. W. 9.35 p.m.
Mondays only.

Fraser River and Gulf

UP RIVER.

Beaver--

From N. W. Mon, Wed., Fri., 8 a.m.
From Chwk. Tues., Thurs., Sat., 7 a.m.

Ramona--

From N. W. Tuea., Thurs., Sat., 8 a.m.
From Chwk. Sun., Wed., Fri., 7 a.m.

DOWN RIVER.

Transfer--

From N. W. daily, except Sat. and Sun.
3 p.m.; Saturday 2 p.m.
Additional trip Monday 5 a.m.
From Steveston, 7 a.m. (Fri. 6 a.m.)
Additional trip Saturday 5 p.m.

VICTORIA AND ISLANDS.

Riftet--

From N. W., Wed. and Mon., 7 a.m.
From Victoria Tuea., and Sat. 4 a.m.

Mail Service

Cloaed. Received.

Seattle, via Sumas . . . 10.00 pm 8.20 am
Sap'ton and Millside 10.00 pm 10.30 am
Vancouver 10.00 pm 9.00 am
Cloverdale, Blaine.

Seattle, etc 8.45 am 3.30 pm
Van. and Cent. Park . . . 10.30 am 2.00 pm
Victoria 10.30 am 10.00 am
East Burnaby 1.15 am 1.20 pm
Steveston, etc. 1.30 pm 10.30 am
East, via C. P. R. 4.45 pm 7.10 pm
East, via C. P. R. 10.00 pm 10.30 am
Sap., Mill, Coq'm. 4.45 pm 7.10 am
Van. and Burnaby 3.30 pm 6.00 pm
Timberland, Tuesday, Friday 12 m., 12 m.



COLUMBIAN COLLEGE TENNIS COURT

MR. D. S. CURTIS

WILL BE GLAD TO
WELCOME YOU AT HIS DRUG STORE
DURING YOUR STAY IN THE CITY.

His Store being one of the finest Drug Stores in
Canada, he is proud to have strangers visit it.

=====
If you want anything in the line of

DRUGS, SPECTACLES,
SEEDS, ETC.

You will find a complete stock at this
store from which to choose,
and at right prices.

D. S. Curtis & Co.

Columbia Street.

QUEEN'S AVENUE METHODIST CHURCH



REV. W. H. BARRACLOUGH, B. A., PASTOR

For the Best

≡≡≡ **ICE CREAM** ≡≡≡

*in the city, in any quantity,
at the right price, ring up the*

**NEW WESTMINSTER CREAMERY
SOCIETY, Ltd.**

Phone 138 P. O. Box 311

During your visit to the Summer School you can
get first class meals and lunches at

KENNY'S RESTAURANT AND CAFE

Open night and day.

Full course meals, 25c. Special rates by the week.

OPPOSITE TRAM OFFICE.

This is an INVITATION to call at

Mackay's Bookstore

Whether to rest, wait for a car, examine stock
or make purchases.

EVERY CALL IS CONSIDERED A FAVOR



Beside our regular stock of Books for School,
Church and Home, our Fine Stationery, Blank
Books, etc., we carry

Pocket Books, Purses, Card Cases, Wrist
Bags, Shopping Bags, Shawl Straps,
Combs, Hair, Tooth and Clothes Brushes
and many other useful articles.



Souvenir Post Cards and Books of Views, Fancy Goods, Etc.

Everything marked in plain figures.
Discounts to clergymen and teachers.

Telephone 157.

J. J. MACKAY & CO., COLUMBIA STREET

New Westminster.

A Good Investment

Dwelling and Two Lots in desirable locality. Price \$1,000; Say \$100 cash and balance at \$10 per month.

WHY WASTE MONEY IN RENT?

CALL ON

Thos. R. Pearson

NEW WESTMINSTER

When you want to buy a neat home for cash or on terms. After you buy your home he will insure it.

PLACE YOUR "LIFE" IN HIS HANDS.



**Delegates
to...
Summer
School:**

Welcome to
our Piano and
Organ Store.



Just look over our stock of

**Bell and Dominion Pianos
and Bell Organs**

Splendid instruments, the best on the market.

Columbia Gramophones and Records.

Will take your old instrument in exchange.
Satisfaction guaranteed. Liberal terms.

Successor to
H. H. Lennie.

J. H. TODD

At the
Old Stand.

Visitors and Friends:

Make the most of your time while at-
tending Summer School. Learn all you
can, see all you can.

DON'T FORGET TO VISIT OUR STORE
IT WILL BE WORTH YOUR TIME.

**Full Stock of Ladies' Silk Umbrellas,
Shirtwaist Suits, Whitewear, Gloves,
Hosiery, all at low summer prices.**

The Latest Novelties in Ladies' Neckwear and
Belts on hand at all seasons.

W. S. Collister & Co.

New Westminster.

Visiting Delegates

To the Summer School are assured
a rest and

DELICIOUS ICE CREAM

and
all **SODA PHOSPHATE VARIETIES**

at the neatest Restaurant in town.
Light Lunches prepared for picnics.
Tea and Coffee at all hours.
Truly a ladies' resort.

MRS. COOK, - COLUMBIA ST.

Phone 193

P. O. Box 603

C. A. WELSH

The People's Grocery

This is the Place for Reliable Fruit and Groceries
Prices right. Courteous clerks. Ship to any point

Columbia Street, New Westminster.

WEST END METHODIST CHURCH



REV. A. J. BRACE, PASTOR.

Programme

Tuesday, July 3	P. M. 2.00	Informal Reception.
	8.00	{ Address of Welcome—Rev. W. J. Sipprell, B. A., D. D. Address, "Forward Movement"—Rev. W. H. Barraclough, B. A.
Wednesday, July 4	A. M. 9.30 to 10.00.....	Devotional—Rev. Ebenezer Robson, D. D.
	10.05 to 10.45.....	Bible Study (Sermon on the Mount)—Rev. Principal Sipprell, B. A., D. D.
	11.00 to 11.45.....	Missions—Rev. J. S. Henderson.
	P. M. 2.00 to 2.45.....	Epworth League Work—Rev. A. M. Sanford, B. A., B. D.
	3.00 to 4.00.....	Round Table Conference, led by H. N. Baker, B. A.
	4.00 to 6.00.....	Recreation.
	8.00	Evangelistic Rally. Sermon, Rev. W. E. Pescott, B. A.
Thursday, July 5	A. M. 9.30 to 10.00.....	Devotional—Rev. C. Ladner.
	10.05 to 10.45.....	Bible Study (Sermon on the Mount)—Rev. Principal Sipprell, B. A., D. D.
	11.00 to 11.45.....	Missions—Rev. S. J. Thompson, President of Conference.
	P. M. 2.00 to 2.45.....	Sunday School Work—Rev. A. E. Hetherington, B. A., B. D.
	3.00 to 4.00.....	Sermon—Rev. Robert Whittington, M. A., D. D.
	4.00 to 6.00.....	Recreation.
	8.00	Missionary Rally—Mr. D. S. Curtis and Rev. W. E. Pescott, B. A.
Friday, July 6	A. M. 9.30 to 10.00.....	Devotional—Rev. Thos. Crosby.
	10.05 to 10.45.....	Bible Study (Sermon on the Mount)—Rev. Principal Sipprell, B. A., D. D.
	11.00 to 11.45.....	Missions—"Christian Stewardship," Rev. R. Forbes Stillman.
	P. M. 2.00 to 2.45.....	Epworth League and Sunday School—Mr. R. H. Cairns.
	3.00 to 4.00.....	Children's Rally—Mrs. A. J. Brace.
	4.00 to 6.00.....	Recreation.
	8.00.....	W. M. S. Rally, led by Mrs. J. F. Betts.
Saturday, July 7	A. M. 9.30 to 10.00.....	Devotional—Rev. Jno. F. Betts.
	10.05 to 10.45.....	Bible Study (Sermon on the Mount)—Rev. Principal Sipprell, B. A., D. D.
	11.00 to 11.45.....	Missions—Rev. W. H. Barraclough, B. A.
	2.00.....	Excursion.

Programme—Continued

Sunday, July 9	A. M	9 30 to 10 30.....	Fellowship Meeting, at College—Rev. James H. White, D. D.
		11 00.....	Sermon, Queen's Avenue Church—Rev. Fletcher L. Wharton, D. D., First M. E. Church, Seattle, Wash.
	P. M	3 00.....	Sunday School Rally of all the Methodist Churches of the City in Queen's Avenue Church—Rev. Principal Sipprell, B. A., D. D.
		7 00.....	Sermon—Rev. Fletcher L. Wharton, D. D., Seattle.
		8 30.....	Sacrament of the Lord's Supper.

Recreation Committee

Rev. W. H. Barraclough, B. A. ; Prof. Paul
Kerr, Mr. Frank Canfield and A. J. Brace.



Reception Committee

Mrs. W. J. Sipprell; Mrs. Dr. White, Mrs.
A. J. Brace.



Local Churches will be Supplied Sunday as follows:

WEST END—A. M. : Rev. A. E. Hetherington,
B. A., B. D. P. M. : Rev. James Turner.

SAPPERTON—A. M. : Rev. Jas. Hicks. P. M. :
Rev. Jas Calvert.

Accompanist—MRS. A. J. BRACE. COLLECTIONS TAKEN AT EVENING SESSIONS.

Summer School Committee

REV. PRINCIPAL SIPPRELL, B. A., D. D., *Chairman.*
REV. A. J. BRACE, *Secretary.*

Victoria—

Rev. S. J. Thompson, *President of Conference.*
Rev. G. K. B. Adams.
Mr. J. B. McCallum.

Vancouver—

Rev. W. E. Pescott, B. A.
Rev. A. M. Sanford, B. A., B. D.
Rev. A. E. Hetherington, B. A., B. D.
Mr. H. W. Baker, B. A.

New Westminster—

Rev. W. H. Barraclough, B. A.
Rev. Jas. H. White, D. D.
Mr. C. S. Keith.



EXHIBITION BUILDINGS, NEW WESTMINSTER.

1906

Provincial Exhibition

1906

Under the Auspices of the Royal Agricultural and Industrial Society of B. C.

At Queen's Park, New Westminster, B. C.

OCTOBER 2 TO OCTOBER 6, BOTH DAYS INCLUSIVE.

\$50,000 In Prizes and Attractions \$50,000

Don't forget this is a Provincial Exhibition, and may prove the opportunity of your lifetime.

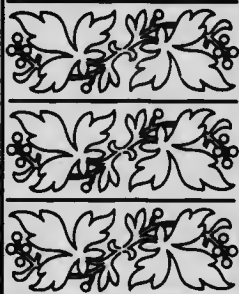
When you have read over the Premium List, we want you to resolve to exhibit something this fall, and also plan to come to the Fair yourself.

The railroads will all give greatly reduced rates, so make the five days, October 2nd to October 6th, a real holiday time and celebrate it with us.

There will be a very attractive programme for the entertainment of visitors to the Exhibition: Grand Electrical Display; Lacrosse Matches; Baseball Matches; Horse Racing; Canoe Racing; Sweetest Music; Grand Concerts each evening.

For full information write

W. H. KEARY, Manager and Secretary,
New Westminster, B. C.



Specia' Tram Rates

Summer School Convention
Columbian College, New Westminster, B. C.

FIFTY CENTS RETURN

Special rate tickets good going July 3rd, returning July 19th, be obtained by Delegates at any office of the Tram Company upon presentation of certificates from their pastor, entitling them to Delegate's rates.

Half-hourly service till 11 P. M. and close connection with city car to college.

CITY LIMITS LINE

Thirty-minute service except from 12 noon to 2 P. M. and 5 to 7 P. M., when there is a twenty-minute service

SAPPERTON LINE

Fifteen-minute service except from 12 noon to 2 P. M. and 5 to 7 P. M., when service is every thirty minutes.

British Columbia Electric Ry. Co.
LIMITED



SOUVENIR



LARGE ASSORTMENT IN THE CITY

SOUVENIR SPOONS
JEWELRY, WATCHES
RINGS, CUT GLASS
SILVERWARE, ETC.

W. C. CHAMBERLIN, THE JEWELER



Alex. Speck, *General Machinist*

—AND DEALER IN—

**BICYCLES, SPORTING
GOODS, CUTLERY, Etc.**

— WE HAVE ALSO THE BEST-EQUIPPED —

REPAIR SHOP

ON THE COAST FOR DOING ALL KINDS OF REPAIRING

We guarantee all our work

*Speck Block, near Tram Office. * Sign—Man on Wheel*

TEL. 30

MOTHER'S BREAD

Douglas Bakery * L. L. Gardhouse

D. A. SHILES

A. E. WHITE

Hartford Fire Insurance Company
Queen Insurance Company
Mutual Life Assurance Company of Canada
Ocean Accident and Guarantee Corporation

WHITE & SHILES

**FIRE, LIFE, ACCIDENT AND
MARINE INSURANCE**

COMMISSION REAL ESTATE

260 COLUMBIA STREET
PHONE 85 NEW WESTMINSTER, B.C.



A Good Newspaper

Like a
Good College

Helps to Make
A Good Town

The Daily Columbian

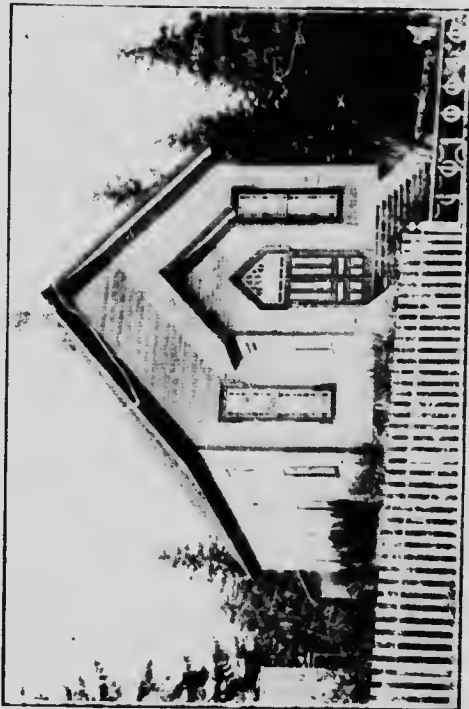
Compares well with any paper published
in a place of New Westminster's size.

THE PAPER KEEPS PACE IN MERIT WITH
THE GROWTH OF ITS SUBSCRIPTION LIST

Be a Subscriber

Send the Weekly

To your friends in the East. \$1 a year.
The Best in British Columbia.



SAPPERTON METHODIST CHURCH. REV. LOUIS THOMAS, Pastor

W. R. GILLEY, Phone 122

J. R. GILLEY, Phone 149

GILLEY BROS.

== DEALERS IN ==

Coal, Lime, Brick, Sand,
Cement, Fire Brick, Clay
and Crushed Rock

== ALSO AGENTS ==

B. C. Pottery Co. Sewer Pipe, etc.

== LOCAL AGENTS ==

Vancouver Portland Cement Co.

== OFFICE ==

Front Street, New Westminster, B. C.

Phone 16.

Near C. P. R. Depot

A DAILY NECESSITY

A Newspaper in Every Home

YOU MAY HAVE ONE

DELIVERED
IN THE CITY

Daily World
- OR -
News - Advertiser
10¢ PER WEEK

BY ORDERING THROUGH



E. H. SANDS

P. O. BOX 537

New Westminster

PHONE 125

OR BY MAIL

	Per Annum
<i>Daily World</i>	\$3.00
<i>Semi-weekly World</i>	1.00
<i>Daily News-Advertiser</i> ...	3.00
<i>Weekly News-Advertiser</i> ..	1.00

ALSO AGENT FOR

Canadian Life and Resources,

A HIGH-CLASS ILLUSTRATED MAGAZINE
ONE DOLLAR PER ANNUM



Fraser River Railway and Traffic Bridge—1781 feet from shore to shore; width, 19 feet; length of draw, 350 feet; traffic roadway, 26 feet above railway; cost, \$1,000,000. This gives admission from the south to one of the great transcontinental lines—the Great Northern Railway; and it is expected that at an early date the Northern Pacific and other railways from the south will make use of the same highway to reach the business end of B. C.

297292

The Royal Bank of Canada

Incorporated 1869.

Capital,	-	-	-	-	\$ 3,000,000
Reserve,	-	-	-	-	\$ 3,437,162
Total Assets,	-	-	-	-	\$36,373,576

GENERAL BANKING BUSINESS TRANSACTED

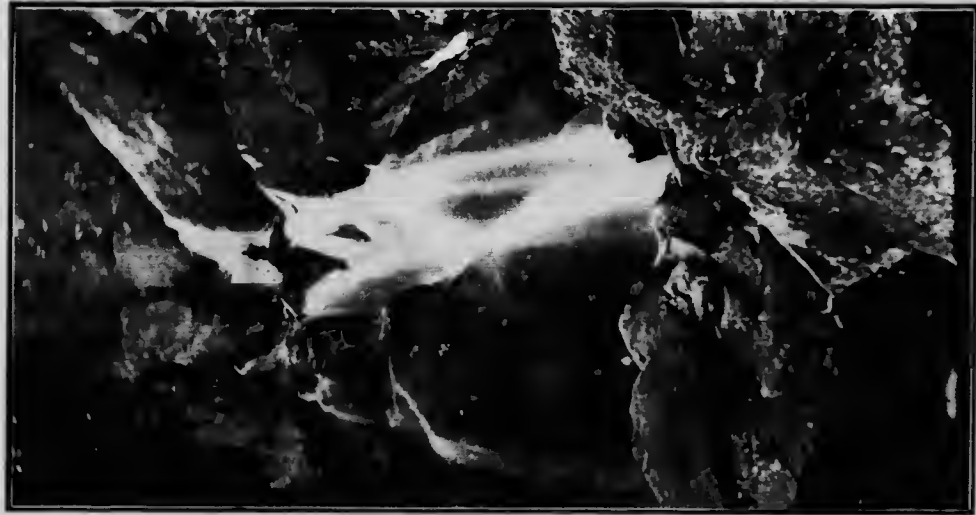
Branches and Correspondents in all the Principal Cities
of the World.

SAVINGS DEPARTMENT

\$1.00 Opens an Account.

OPEN SATURDAY EVENINGS FROM 8 TO 9 O'CLOCK.

New Westminster Branch—F. B. LYLE, Manager.



BRIDAL VEIL FALLS, PITT LAKE



FRASER VALLEY Typical Hay Field



While at Summer School

Inspect Our Stock

FULL LINE OF

Books and Stationery

Depository of the Bible Society

Don't fail to see our **LOVELY CHINA**

Just the thing for a tasty Wedding Present

H. MOREY & CO.

Wholesale and Retail

Booksellers, Stationers and Printers

Columbia Street, New Westminster,
Tel. 2. B. C.



STRICTLY CONFIDENTIAL

All on the Quiet!

WE ARE OFFERING OUR
... FRIENDS OF THE ...

**Summer School
a Summer Tonic**

HERE IT IS!!

For that tired-of-winter feeling take one of our "Progress Brand Suits" and a "Wakefield Silk Hat." They'll make you look like a new man, and our prices will make you feel like one. We promise you satisfaction. The guarantee is - "Your money back if you want it."

Try our Summer Tonic. Special discounts to the Summer School Delegates.

H. L. DeBECK, - - The Clothier

THE LEADING STORE IN TOWN

This is no empty boast, as you can judge for yourself
by calling and inspecting our stock of

FIRST-CLASS GROCERIES

Canned Delicacies

We have them. The Finest Fruits and Vegetables, put up by the finest packers in the country, for the finest customers in the city. They're OURS.

Butter and Eggs

You can't make a mistake by depending on us for good Butter and Fresh Eggs. We get the finest Dairy Butter that is brought into town. We also can supply you with first-class Creamery Butter.



Our Crockery Dept.

is one of the most complete Crockery Departments on the coast. We can also show the most desirable CHINA in every way that we have heretofore had in stock.

DINNER SETS — A splendid stock from which to choose. Jardiniers, Vases and fancy China Dishes.

You are cordially invited to inspect our store and take something home from the Summit School.

GEORGE ADAMS, The Public Supply Store

NEW WESTMINSTER, B. C.

