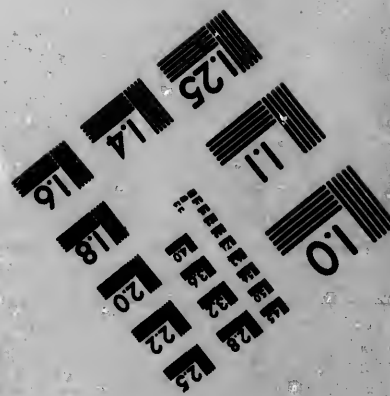
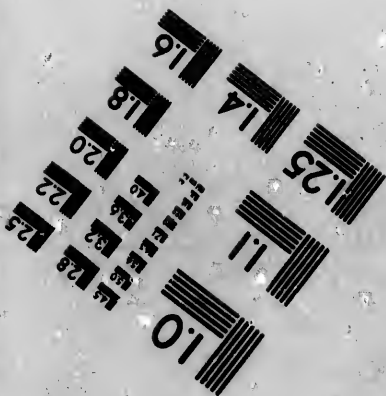
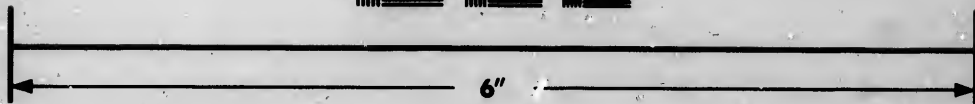
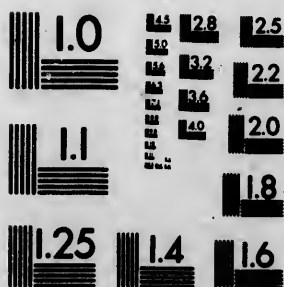


**IMAGE EVALUATION
TEST TARGET (MT-3)**



**Photographic
Sciences
Corporation**

23 WEST MAIN STREET
WEBSTER, N.Y. 14580
(716) 872-4503

**CIHM/ICMH
Microfiche
Series.**

**CIHM/ICMH
Collection de
microfiches.**



Canadian Institute for Historical Microreproductions / Institut canadien de microreproductions historiques

© 1983

Technical and Bibliographic Notes/Notes techniques et bibliographiques

The Institute has attempted to obtain the best original copy available for filming. Features of this copy which may be bibliographically unique, which may alter any of the images in the reproduction, or which may significantly change the usual method of filming, are checked below.

L'Institut a microfilmé le meilleur exemplaire qu'il lui a été possible de se procurer. Les détails de cet exemplaire qui sont peut-être uniques du point de vue bibliographique, qui peuvent modifier une image reproduite, ou qui peuvent exiger une modification dans la méthode normale de filmage sont indiqués ci-dessous.

- Coloured covers/
Couverture de couleur
- Covers damaged/
Couverture endommagée
- Covers restored and/or laminated/
Couverture restaurée et/ou pelliculée
- Cover title missing/
Le titre de couverture manque
- Coloured maps/
Cartes géographiques en couleur
- Coloured ink (i.e. other than blue or black)/
Encre de couleur (i.e. autre que bleue ou noire)
- Coloured plates and/or illustrations/
Planches et/ou illustrations en couleur
- Bound with other material/
Relié avec d'autres documents
- Tight binding may cause shadows or distortion along interior margin/
La reliure serrée peut causer de l'ombre ou de la distortion le long de la marge intérieure
- Blank leaves added during restoration may appear within the text. Whenever possible, these have been omitted from filming/
Il se peut que certaines pages blanches ajoutées lors d'une restauration apparaissent dans le texte, mais, lorsque cela était possible, ces pages n'ont pas été filmées.
- Additional comments:/
Commentaires supplémentaires:

- Coloured pages/
Pages de couleur
- Pages damaged/
Pages endommagées
- Pages restored and/or laminated/
Pages restaurées et/ou pelliculées
- Pages discoloured, stained or foxed/
Pages décolorées, tachetées ou piquées
- Pages detached/
Pages détachées
- Showthrough/
Transparence
- Quality of print varies/
Qualité inégale de l'impression
- Includes supplementary material/
Comprend du matériel supplémentaire
- Only edition available/
Seule édition disponible
- Pages wholly or partially obscured by errata slips, tissues, etc., have been refilmed to ensure the best possible image/
Les pages totalement ou partiellement obscurcies par un feuillet d'errata, une pelure, etc., ont été filmées à nouveau de façon à obtenir la meilleure image possible.

This item is filmed at the reduction ratio checked below/
Ce document est filmé au taux de réduction indiqué ci-dessous.

10X	14X	18X	22X	26X	30X
<input type="checkbox"/>	<input type="checkbox"/>	<input type="checkbox"/>	<input type="checkbox"/>	<input checked="" type="checkbox"/>	<input type="checkbox"/>
12X	16X	20X	24X	28X	32X

The copy filmed here has been reproduced thanks to the generosity of:

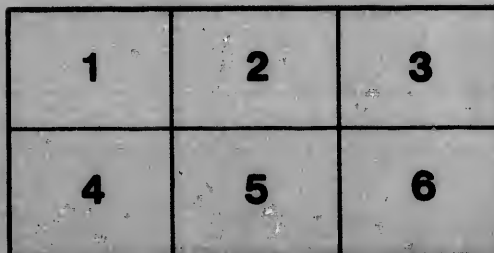
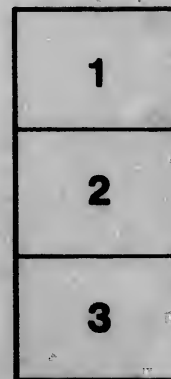
Library of Congress
Photoduplication Service

The images appearing here are the best quality possible considering the condition and legibility of the original copy and in keeping with the filming contract specifications.

Original copies in printed paper covers are filmed beginning with the front cover and ending on the last page with a printed or illustrated impression, or the back cover when appropriate. All other original copies are filmed beginning on the first page with a printed or illustrated impression, and ending on the last page with a printed or illustrated impression.

The last recorded frame on each microfiche shall contain the symbol \rightarrow (meaning "CONTINUED"), or the symbol ∇ (meaning "END"), whichever applies.

Maps, plates, charts, etc., may be filmed at different reduction ratios. Those too large to be entirely included in one exposure are filmed beginning in the upper left hand corner, left to right and top to bottom, as many frames as required. The following diagrams illustrate the method:



L'exemplaire filmé fut reproduit grâce à la générosité de:

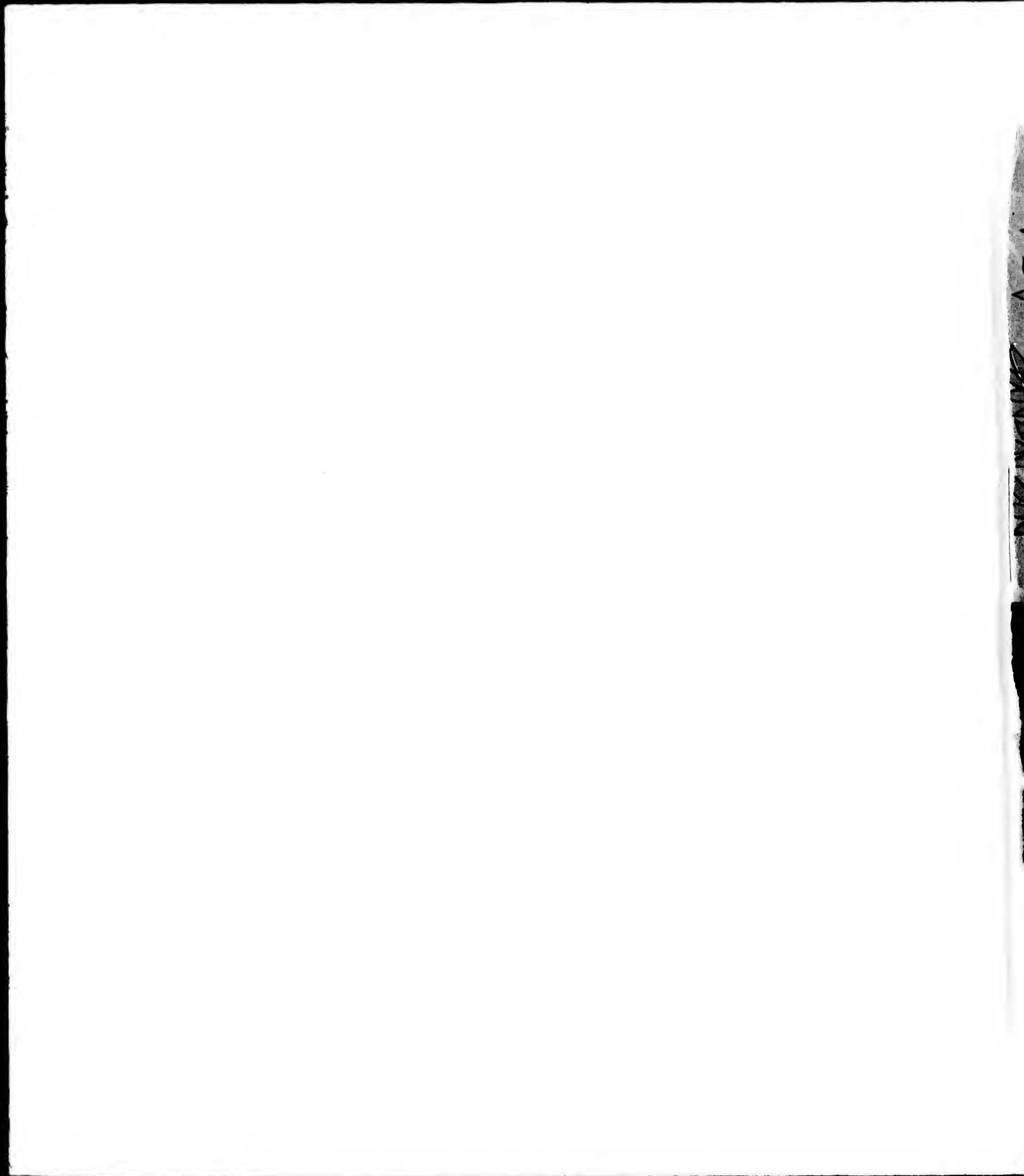
Library of Congress
Photoduplication Service

Les images suivantes ont été reproduites avec le plus grand soin, compte tenu de la condition et de la netteté de l'exemplaire filmé, et en conformité avec les conditions du contrat de filmage.

Les exemplaires originaux dont la couverture en papier est imprimée sont filmés en commençant par le premier plat et en terminant soit par la dernière page qui comporte une empreinte d'impression ou d'illustration, soit par le second plat, selon le cas. Tous les autres exemplaires originaux sont filmés en commençant par la première page qui comporte une empreinte d'impression ou d'illustration et en terminant par la dernière page qui comporte une telle empreinte.

Un des symboles suivants apparaîtra sur la dernière image de chaque microfiche, selon le cas: le symbole \rightarrow signifie "A SUIVRE", le symbole ∇ signifie "FIN".

Les cartes, planches, tableaux, etc., peuvent être filmés à des taux de réduction différents. Lorsque le document est trop grand pour être reproduit en un seul cliché, il est filmé à partir de l'angle supérieur gauche, de gauche à droite, et de haut en bas, en prenant le nombre d'images nécessaire. Les diagrammes suivants illustrent la méthode.



QK 82
N 52

SECOND COPY.

SERIES · III ·

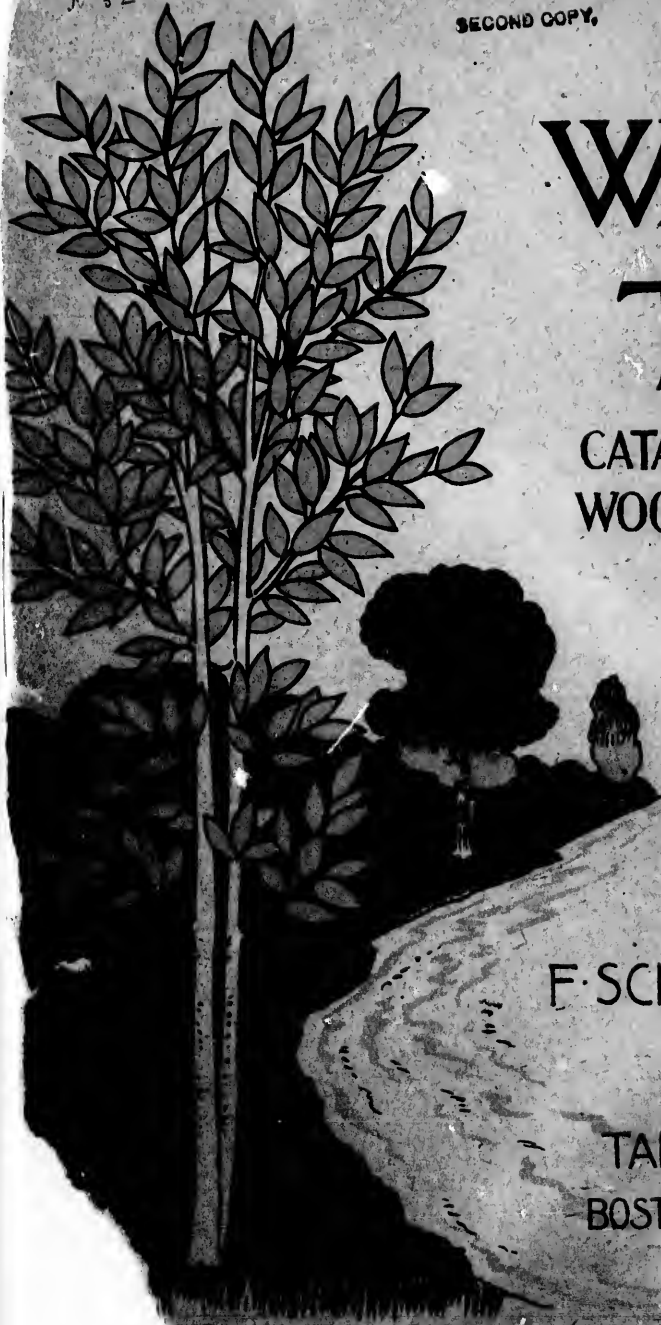
WAYSIDE TREES

CATALPA · MAPLES · YELLOW-
WOOD · AILANTHUS · LOCUST
WALNUT · ETC.

WITH LIFE
SIZE PEN AND
INK STUDIES
OF THE LEAVES
FROM NATURE
BY

F. SCHVYLER MATHEWS

TABER-PRANG ART CO
BOSTON & SPRINGFIELD, MASS.







WAYSIDE TREES



SERIES III. BEING A DESCRIPTION OF THE CAT-
ALPA, MAPLES, YELLOWWOOD, AIL-
ANTHUS, LOCUST, WALNUT, ETC.

BY F. SCHUYLER MATHEWS
ILLUSTRATED WITH PEN AND INK
DRAWINGS FROM NATURE BY THE
AUTHOR

TABER-PRANG ART CO
SPRINGFIELD, MASS.

TWO COPIES RECEIVED,
Library of Congress,
Office of the
JAN 2 - 1900
Register of Copyrights

QK 482
.M52
Vol. 3

53802

COPYRIGHT 1899 BY TABER PRANGART CO SPRINGFIELD MASS.

142
Jan. 2. 1900.

RECEIVED,
agrees
the
900
rights

INTRODUCTION

WAYSIDE TREES, SERIES III.

LEAVING the alternate-growing leaves which were exhausted in the second series we approach a large class of opposite-growing leaves, the winter buds of which have unfolded in a pair of well-balanced leaves whose systematic arrangement along the branchlets will be discerned at a glance. All the dogwoods and maples are included under this order, except one eccentric character, whose exception to the rule is so conspicuous and solitary that it has been named the alternate-leaved dogwood.

The character or method of growth among these leaves shows a fundamental difference from that of the leaves already described. The order is now as follows:—

Leaves, Simple :		pages
Class 9	{	Opposite growing 3, 5
		Without teeth
		Undivided edge
" 10	{	Opposite growing 7
		With teeth
		Undivided edge
" 11	{	Opposite growing 9, 13, 17, 19
		With teeth
		Divided edge

But the sugar maple is not distinctly toothed and must be classified thus:—

Class 12	{	Opposite growing
		Undulating-toothed
		Divided edge 11

In order to obtain room for our big-leaved yellow-wood and ailanthus, I have found it necessary to place them in the centre of the book where they can occupy both the right and left hand pages. This caused a break in the succession of leaf-types which could not well be avoided. But with the advent of the yellow-wood we have left behind us all the simple formed leaves and face the complex or compound forms, i.e., leaves which are composed of *leaflets*.

Our order now runs as follows:—

Leaves, Compound :		
Class 13	{	Alternate growing
		Without teeth
		Leaflets bordering main leaf-stem 14, 15, 23
" 14	{	Alternate growing
		With teeth
		Leaflets bordering main leaf-stem 23, 25

The class numbered 14, consisting mainly of the Juglandaceae family, is continued in the fourth series.

F. SCHUYLER MATHEWS.

42
2.1900.

Series 3.



Alternanthera-leaved Dogwood.
Cornus alternifolia.

Flowering Dogwood.
Cornus florida.

Alternate-leaved Dogwood.

Cornus alternifolia.

- Family . . . CORNACEÆ, Dogwood.
Leaf . . . Parallel veined, shiny moderate yellow-green.
Fruit . . . With corallike red stems, blue-black bloom.
Bark . . . Dark ruddy brown; gray-brown branches; comparatively smooth.
Height . . . 15 ft. to 20 ft., rarely 30 ft.
Habitat . . . New England west to Minn., Alleghany Mts. to Ga. and Ala., southward through the northern States.

Character: Leaves clustered at the end of the branches.

Flowering Dogwood.

Cornus florida.

- Family . . . CORNACEÆ, Dogwood.
Leaf . . . Firm, moderate shiny green.
Fruit . . . Scarlet, about $\frac{1}{8}$ in. long. In fall buds are flat, round with point atop.
Bark . . . Dark yellow-brown, small, scaly.
Height . . . 15 ft. to 30 ft., sometimes 40 ft.
Habitat . . . Mass. west to southwest Mo., south to Fla., and valley of Brazos Riv., Texas.

Series 3.



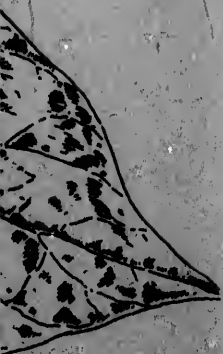
Catalpa.
Catalpa bignonioides.

Fringe Tree.
Chionanthus virginica.



Fringe Tree.

Chionanthus virginica.



Fringe Tree.

Chionanthus virginica.

- Family . . . OLEACEÆ, Olive.
Leaf . . . Smooth, 4 in. to 8 in. long, firm,
deep green, pale beneath.
Fruit . . . Oval, dark black-blue bloom, few in
a cluster, less than 1 in. long.
Bark . . . Brown; thin scales tinged with red.
Height . . . 20 ft. to 30 ft., often a shrub.
Habitat . . . Southern Pa. to Tampa Bay, Fla.,
Gulf States to southern Ark., val-
ley of Brazos Riv., Texas.

Catalpa.

Catalpa bignonioides.

- Family . . . BIGNONIACEÆ, Bignonia.
Leaf . . . Heart-shaped, soft, light green, large,
woolly beneath.
Bean . . . Long, slender, light-brown, with
winged or fringed seeds.
Bark . . . Thick, smooth light-brown tinged
red, large thin scales.
Height . . . 40 ft. to 50 ft., rarely 60 ft.
Habitat . . . Southwestern Ga., western Fla., cen-
tral Ala. and Miss., hardy, and
cultivated throughout the North.
Common in southern New England
and New York.

Series 3.



Black Haw.
Viburnum prunifolium.

Burning Bush.
Euonymus europaeus.

Sweet Viburnum, Sheepberry.
Viburnum lentago.

Black Haw.
Viburnum prunifolium.



Burning Bush.

Eubonymus Europæus.

- Family . . . CELASTRACEÆ, Staff-tree.
 Leaf . . . Elliptical, olive-green, shiny.
 Fruit . . . Pale magenta, opening and showing
 an orange seed, suspended.
 Bark . . . Gray-brown, very small scales.
 Height . . . 15 ft. to 20 ft.
 Habitat . . . Not indigenous: from Europe. Parks
 and gardens. Our own variety,
 similar fruit, purplish-red seeds
 (*Eubonymus atropurpureus*), N. Y.
 to Neb., south to Fla., southwest to
 Ind. Territory.

Sweet Viburnum, Sheepberry.

Viburnum Lentago.

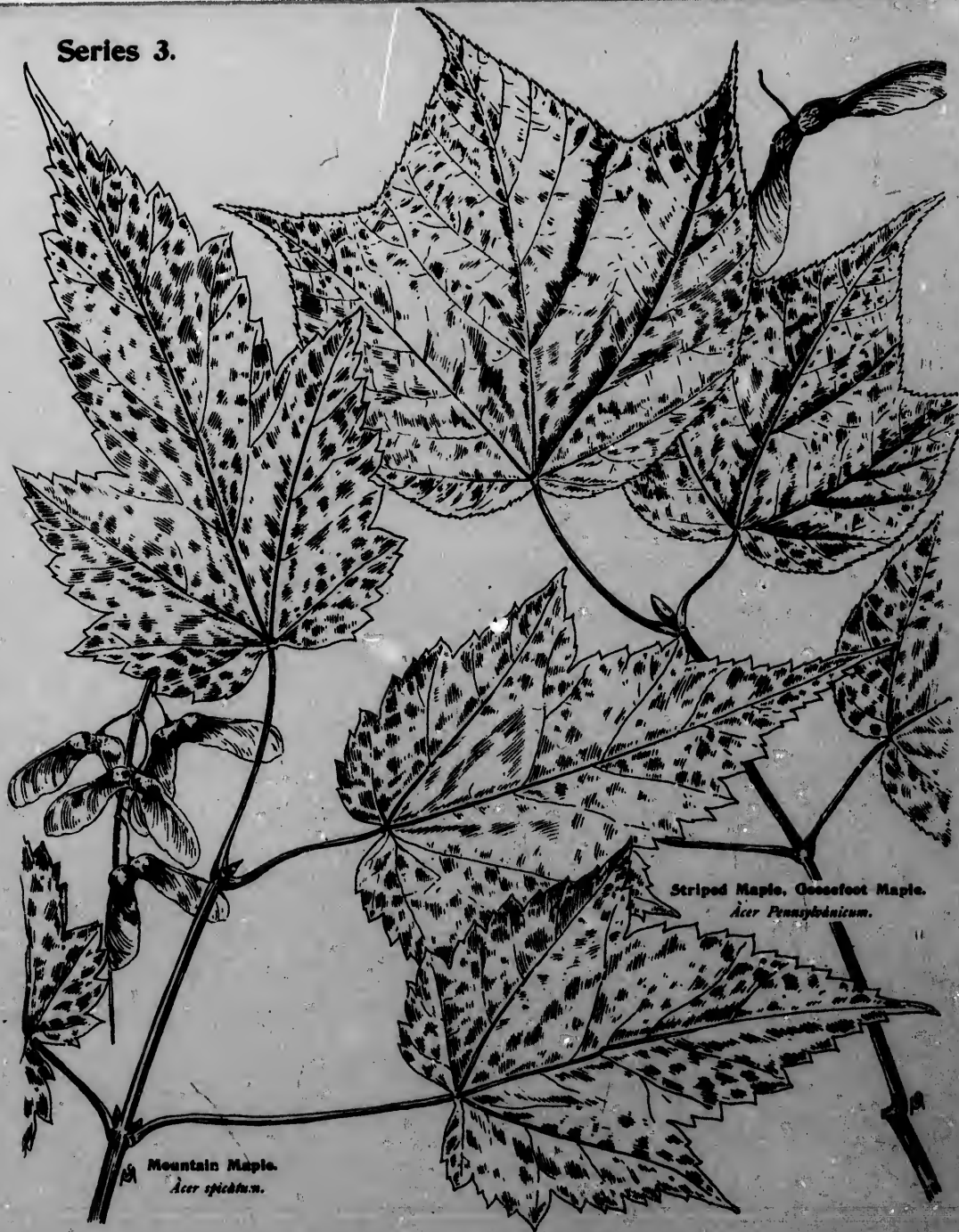
- Family . . . CAPRIFOLIACEÆ, Honeysuckle.
 Leaf . . . Deep green, shiny.
 Fruit . . . Red-stemmed, blue-black bloom; less
 than ¼ in. long.
 Bark . . . Red-brown, with small scales.
 Height . . . 15 ft. to 30 ft.
 Habitat . . . New England, southwestward through
 the northern States, along Allegha-
 ny Mts. to northern Ga., west to
 Mo. and Neb.

Black Haw.

Viburnum prunifolium.

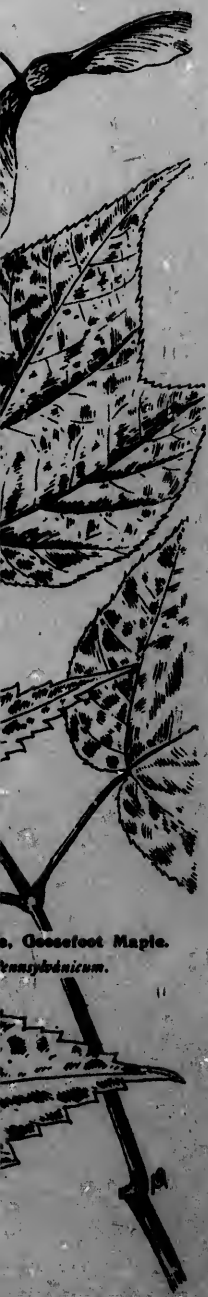
- Family . . . CAPRIFOLIACEÆ, Honeysuckle.
 Leaf . . . Firm dark green.
 Fruit . . . Dark black-blue bloom.
 Bark . . . Ruddy brown, scaly.
 Height . . . 15 ft. to 30 ft.
 Habitat . . . Southwestern Conn., lower Hudson
 Riv. valley to Hernando Co., Fla.,
 southwest to Mo., Ark., Oklaho-
 ma and valley of Guadalupe Riv.,
 Texas.

Series 3.



Mountain Maple.
Acer spicatum.

Striped Maple, Goosefoot Maple.
Acer Pennsylvanicum.



s. Goosefoot Maple.
Pennsylvanicum.

Mountain Maple.

Acer spicatum

- Family . . . SAPINDACEÆ, Soapberry.
Leaf . . . Often attenuated, usually three-lobed, soft.
Seed . . . Small, wings nearly at right angle, in long clusters.
Bark . . . Thin, smooth or slightly furrowed, ruddy brown.
Height . . . 25 ft. to 30 ft.
Habitat . . . Me. to Minn., south along Appalachian Mts. to northern Ga., a tree only on western slopes of mts. in Tenn. and N. Car.

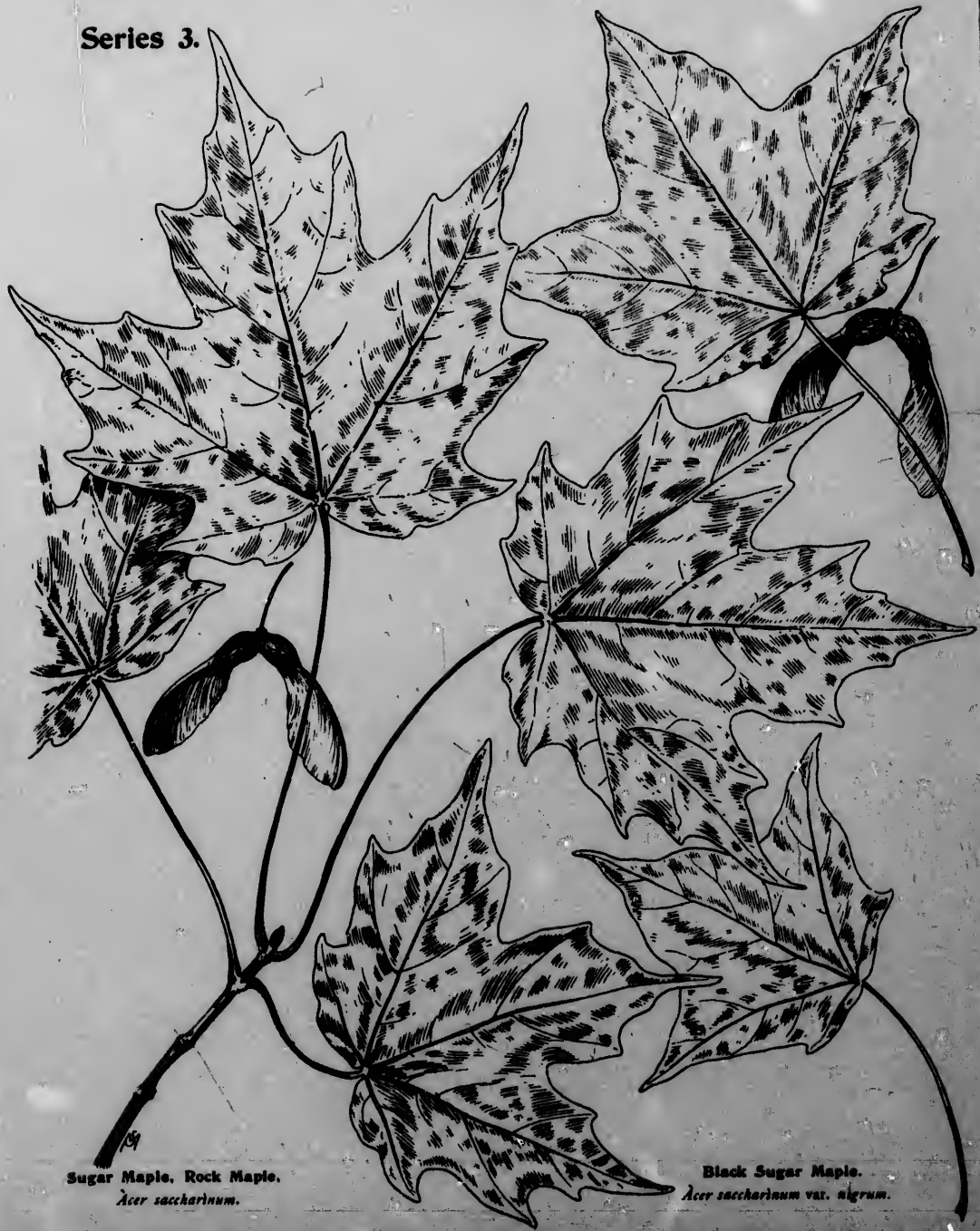
Character: in the north usually a shrub.

Striped Maple, Goosefoot Maple.

Acer Pennsylvanicum.

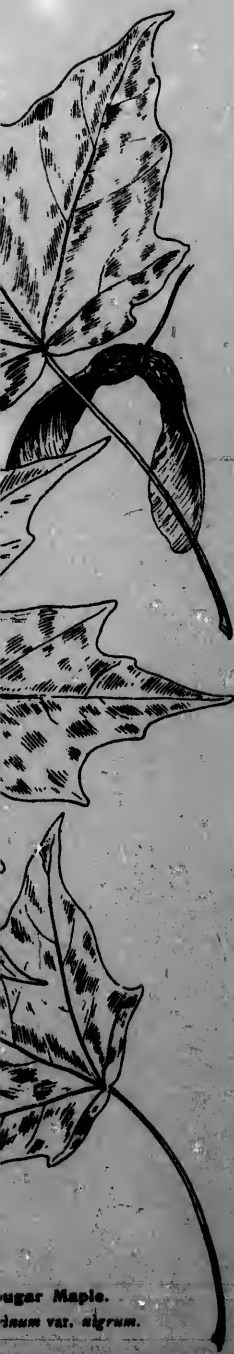
- Family . . . SAPINDACEÆ, Soapberry.
Leaf . . . Soft, large, light green, three-lobed.
Seed . . . Widely diverging wings, large.
Bark . . . Small trees, light green, striped with brown lines; larger, red-brown, pale stripes.
Height . . . 25 ft. to 40 ft.
Habitat . . . Northern N. E., N. Y. to northeastern Minn., northern States in elevated regions, south along Appalachian Mts. to northern Ga.

Series 3.



Sugar Maple. Rock Maple.
Acer saccharinum.

Black Sugar Maple.
Acer saccharinum var. *nigrum.*



Sugar Maple, Rock Maple.

Acer saccharinum.

- Family . . . SAPINDACEÆ, Soapberry.
Leaf . . . : Dull toothed, moderate yellow-green,
waxy surface.
Seed . . . Slightly diverging wings.
Bark . . . : Deeply seamed, brown-gray.
Height . . . 70 ft. to 100 ft.; sometimes 120 ft.
Habitat . . . Me. to northern Fla., west to Minn.
and eastern Neb., Kan. and Tex.

Black Sugar Maple.

Acer saccharinum var. *nigrum.*

- Family . . . SAPINDACEÆ, Soapberry.
Leaf . . . : Hardly any teeth, widely three-lobed,
the cleft at base often closed.
Seed . . . Slightly diverging wings.
Bark . . . : Black-brown, deeply seamed.
Height . . . 70 ft. to 80 ft., sometimes 100 ft.
Habitat . . . Low grounds and banks of streams,
shores of L. Champlain, Vt., west
to Ark. and Kan., southwest to
northern Ala., Mass., banks of
Genesee Riv., N. Y.

Series 3.

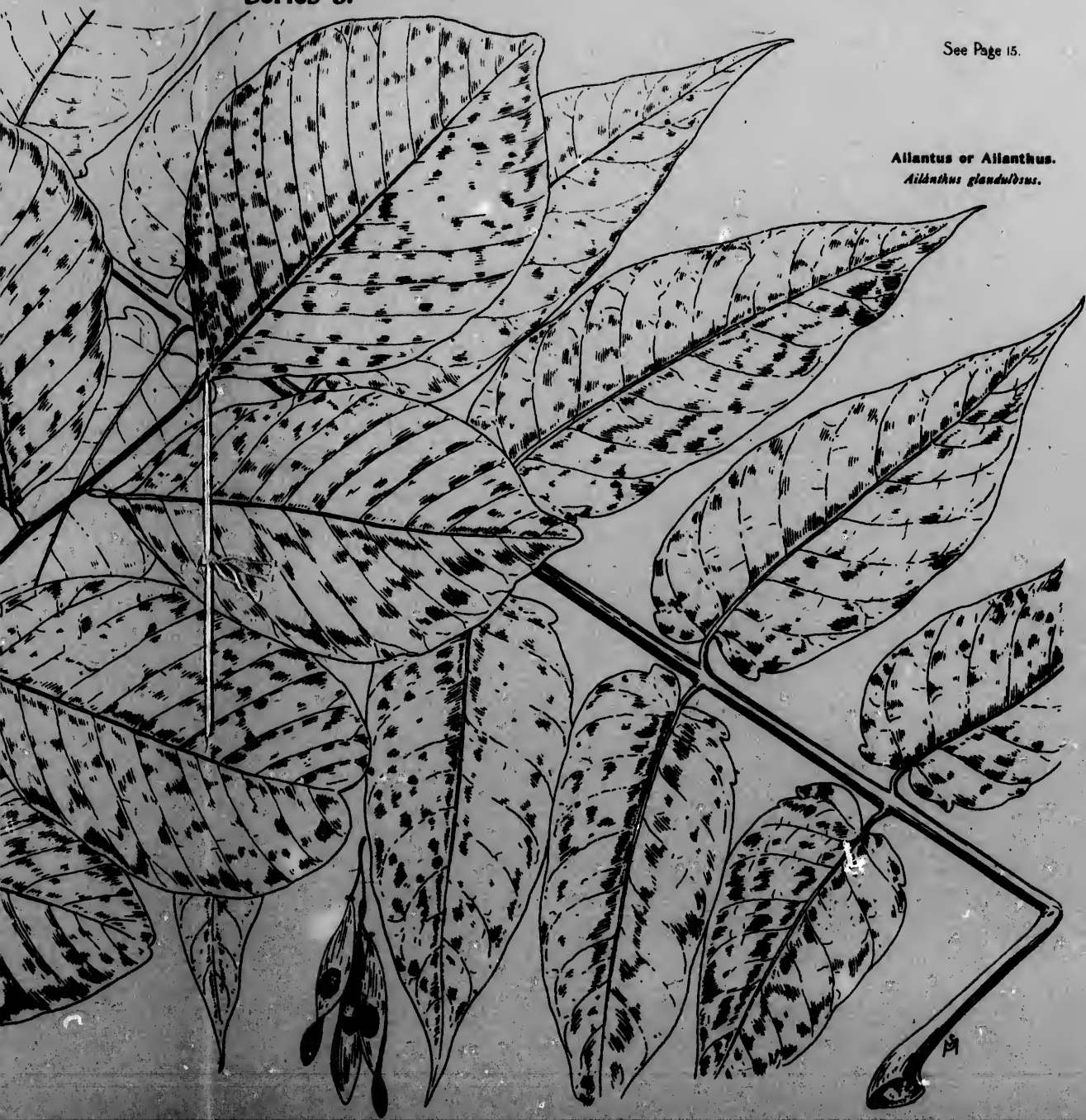


Yellowwood, Virgilia.
Cedrela tinctoria.

Series 3.

See Page 15.

Allantus or Allanthus.
Allanthus glandulosa.



Yellowwood, Virginia.

Cladrastis tinctoria.

- Family . . . LEGUMINOSÆ, Pulse.
Leaf . . . Leaflets, 7 to 11, light olive-green.
Bean . . . Pod 3 in. or 4 in. long, shaped like
pea-pod.
Bark . . . Smooth grayish brown, or light brown.
Height . . . 50 ft. to 60 ft., sometimes 70 ft.
Habitat . . . Cliffs of the Kentucky and Dick
Rivs., in central Ky., central Tenn.,
especially near Nashville, western
slopes of high mts. in eastern
Tenn., and in Cherokee Co., N.
C., cult. from N. H. and N. J.,
southward.

Allantus or Allanthus.

Allanthus glandulosa.

- Family . . . SIMARUBACEÆ, Quassia.
Leaf . . . Leaflets 21 to 41, stem horse-hoof-shaped, two or three coarse blunt teeth at base of leaflet.
Seed . . . Large clusters, winged, at first light green or pink tinged, afterwards buff-brown.
Bark . . . On young trees smooth, brown with buff striping; on older, brown, comparatively smooth.
Height . . . 50 ft. to 70 ft.
Not indigenous: from China. City streets, parks, etc.
Character: Staminate flowers, green, ill-scented.

Series 3.



White Maple, Silver Maple.
Acer dasycarpum.



White Maple. Silver Maple.

Acer dasycarpum.

- Family . . . SAPINDACEÆ, Soapberry.
Leaf . . . Deeply five-lobed (cut-leaved varieties), waxy surface, deep green, very light beneath.
Seed . . . Large, extremely divergent wings; one wing often small.
Bark . . . Brown, furrowed, thin scales.
Height . . . 70 ft. to 90 ft., sometimes 120 ft.
Habitat . . . Me. to Fla., west to eastern Dak. and Neb., Kan., Oklahoma, valley of Mississippi River.

Series 3.

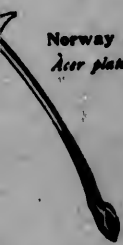


Norway Maple.
Acer platanoides.

Red Maple. Swamp Maple.
Acer rubrum.



Norway Maple.
Acer platanoides.



Red Maple, Swamp Maple.

Acer rubrum.

- Family . . . SAPINDACEÆ, Soapberry.
Leaf . . . Generally three-lobed, light green above, light whitish green beneath, turning red in autumn.
Seed . . . Slightly divergent wings, smooth, drooping stems.
Bark . . . Brown or gray-brown, roughly scamed, scaly.
Height . . . 75 ft. to 80 ft., sometimes 120 ft.
Habitat . . . Me. to Fla., west to eastern Daks., Neb., Oklahoma, and valley of Trinity River, Texas.

Norway Maple.

Acer platanoides.

Common in parks, dark green leaves, green on both sides, large seed, with extremely divergent wings; dark brown bark, moderately rough, branches almost horizontal with trunk; juice milky.
There are some cut-leaved forms.

Series 3.



Loeust.
Robinia Pseudacacia

Kentucky Coffee Tree.
Gymnocladia dioica



Locust.

Robinia Pseudacacia.

- Family . . . LEGUMINOSÆ, Pulse.
Leaf . . . Dull dark olive (bluish) green, leaflets 7 to 19, pale beneath.
Bean . . . Pod flat, about 3 in. long.
Bark . . . Dark brown, deeply furrowed, small scales.
Height . . . 60 ft. to 80 ft., sometimes 90 ft.
Habitat . . . Appalachian Mts., Marine Co., Pa., to northern Ga. In general cultivation east of the Rocky Mts. Common.

Kentucky Coffee Tree.

Gymnocladus Canadensis.

- Family . . . LEGUMINOSÆ, Pulse.
Leaf . . . Double compound, sometimes 3 ft. long, olive-green, leaflets without teeth.
Bean . . . Pod large, coarse, curved, nearly 2 in. broad, hard gray beans.
Bark . . . Dark dull brown, rough scaly, branches also scaly and rough.
Height . . . 60 ft. to 75 ft., sometimes 110 ft.
Habitat . . . Shores Cayuga, and Seneca Lakes, N. Y., Franklin Co., Pa., west through southern Mich. to valley of Minnesota Riv., to eastern Neb., eastern Kan., southwestern Ark. and Ind. Ter., south betw. Alleghany Mts. and Mississippi River to Middle Tenn.

Series 3.



Honey Locust.
Gleditsia triacanthos.

Mountain Ash.
Fyrus americana.

L. 20



Mountain Ash.
Fyrus Americana.

Honey Locust.

Gleditsia triacanthos.

- Family . . . LEGUMINOSÆ, Pulse.
Leaf . . . Sometimes double compound, usually 14 leaflets, obscurely toothed, light dull green.
Bean . . . Pod ruddy, dark brown, twisted, about 10' in. long, or more, filled with yellow sweet pulp; brown hard scales.
Bark . . . Gray-brown, seamed, thickly covered with light brown thorns, 4 in. long, often 3-branched.
Height . . . 70 ft. to 90 ft., sometimes 140 ft.
Habitat . . . Western slope of Alleghany Mts. in Pa., west through Mich. to eastern Neb., Kan. and Ind. Ter., south to northern Ala., Miss. and Tex. A variety without thorns called var. *inermis*.

Mountain Ash.

Fyrus Americana.

- Family . . . ROSACEÆ, Rose.
Leaf . . . Leaflets 13 to 17, bright deep green, pale beneath.
Fruit . . . In flat clusters, dull scarlet.
Bark . . . Flavored like wild cherry, dark shiny brown.
Height . . . 15 ft. to 30 ft., often a shrub.
Habitat . . . Elevated regions of the northeastern States, region of the Great Lakes, and high mountain ranges of Va. and N. Car.

Series 3.



Butternut.
Juglans cinerea.

Black Walnut
Juglans nigra.



Black Walnut.
Juglans nigra.

Butternut.

Juglans cinerea.

- Family . . . JUGLANDACEÆ, Walnut.
Leaf . . . Leaflets, 11 to 17, thin, dull yellow-green, roughish.
Fruit . . . Sticky, green (velvety) husk, long, dark-brown rough nut, sweet kernel.
Bark . . . Light gray, small ridges, shallow fissures, rough-firm.
Height . . . 50 ft. to 80 ft., occasionally 100 ft.
Habitat . . . Me. to eastern Dak., southeastern Neb., south through northern States to Del., southern Mo., northeastern Ark., Appalachian Mts. to northern Ga., northwestern Ala.

Black Walnut.

Juglans nigra.

- Family . . . JUGLANDACEÆ, Walnut.
Leaf . . . Leaflets 15 to 23, thin, shiny yellow-green.
Fruit . . . Aromatic green husk; large, spheroidal, rough, dark-brown nut; sweet, strong kernel.
Bark . . . Dark brown, tinged with brown-red, deeply fissured, rounded ridges.
Height . . . 70 ft. to 100 ft., occasionally 150 ft.
Habitat . . . Western Mass., through southern Mich., Minn. to northern Neb., eastern Kan., southward to western Fla., central Ala., Miss. and Texas.

NAMES

(Manual). The nomenclature of but consistent is its standard form in the use time, and the le to a popular

SUBWORDS.

gra.
 scolata.
 cana.
 asyriana.
 rolliana.
 americana.
 juncea.
 andra.
 europaea.

talpa.
 virginiana.
 aris thyoidea.
 giana.
 asyriana.
 variata.

altoides.

aricana.
 roseus.
 as virginica.

denais.
 abia.
 nana.
 alba.

caroliniana.

giana.

aphrodisiaca.

alio distans.

	DR. ASA GRAY.	C. S. BARRETT.	GEO. B. SWEENEY.	
	Larch, American, or Hackmatack. Linden, American, or Basswood. Liquidambar, or Sweet Gum. Locust. Locust, Honey. Magnolia, Small, or Sweet Bay. Maple, Ash-leaved, or Box Elder. Maple, Black Sugar. Maple, Mountain. Maple, Norway. Maple, Red, or Swamp. Maple, Striped, or Moosefoot. Maple, Sugar, or Rock. Maple, White or Silver. Mulberry, Red. Oak, Basket, or Cow. Oak, Black.	Larix Americana. Tilia Americana. Liquidambar styraciflua. Robinia Pseudacacia. Gleditsia triacanthos. Magnolia glauca. Negundo aceroides. Acer saccharinum var. nigrum. Acer apiculatum. Acer platanoides. Acer rubrum. Acer Pennsylvanicum. Acer saccharinum. Acer dasycarpum. Myrica rubra. Quercus Michauxii. Quercus coccinea var. tinctoria. Quercus nigra. Quercus macrocarpa. Quercus prinus. Quercus imbricaria. Quercus palustris. Quercus stellata. Quercus rubra. Quercus coccinea. Quercus falcata. Quercus bicolor. Quercus aquatica. Quercus alba. Quercus Phellos. Quercus Muhlenbergii.	Larix laricina. Acer segundo. Acer barbatum var. nigrum. Acer barbatum. Acer saccharinum. Quercus velutina. Quercus Marilandica. Quercus minor. Quercus digitata. Quercus platanoides. Quercus nigra. Quercus acuminata. Pinus divaricata. Pinus Virginiana. Pinus echinata. Prunus nigra. Populus alba. Sassafras Sassafras. Ficus Mariana. Ficus rubens. Ficus Canadensis. Magnolia tripetala. Salix fragilis. Salix cordata. Salix longifolia. Salix Babylonica. Salix alba var. carulea. Celastrus tinctoria.	Larix laricina. Tilia americana. Robinia pseudacacia. Gleditsia triacanthos. Acer segundo. Acer saccharum nigrum. Acer pennsylvanicum. Acer saccharum. Acer saccharinum. Quercus michauxii. Quercus velutina (Yellow Oak). Quercus marilandica. Quercus minor. Quercus digitata. Quercus platanoides. Quercus nigra. Quercus phellos. Quercus acuminata (Chinquapin Oak). Diospyros virginiana. Pinus divaricata. Pinus virginiana. Pinus taeda. Pinus strobus. Pinus echinata. Prunus nigra. Populus alba. Cercis canadensis. Sassafras sassafras. Ficus mariana. Ficus rubens. Ficus canadensis. Magnolia tripetala. Viburnum lentago. Salix flavistata. Salix babylonica. Celastrus helen.
	Oak, Black Jack. Oak, Bur, or Overcup. Oak, Chestnut. Oak, Laurel. Oak, Pin. Oak, Post, or Iron. Oak, Red. Oak, Scarlet. Oak, Spanish. Oak, Swamp White. Oak, Water. Oak, White. Oak, Willow. Oak, Yellow Chestnut. Papaw, or Custard Apple. Persimmon. Pine, Gray, or Jack. Pine, Jersey Scrub. Pine, Loblolly, or Old Field. Pine, Northern Pitch. Pine, Red, or Norway. Pine, Southern Yellow, or Georgia, or Long-leaf. Pine, Table Mountain. Pine, White. Pine, Yellow, Short-leaf Pine. Pine, Canada. Poplar, Balsam. Poplar, Balsam — Varieties.	Asimina triloba. Diospyros Virginiana. Pinus Banksiana. Pinus Inopp. Pinus Teda. Pinus rigida. Pinus resinosa. Pinus palustris. Pinus pungens. Pinus Strobus. Pinus mitis. Prunus Americana. Populus balsamifera. Populus balsamifera var. internodia. Populus balsamifera var. latifolia. Populus balsamifera var. virginiana. Populus alba. Cercis Canadensis. Sassafras officinale. Ficus nigra. Ficus nigra var. rubra. Ficus alba. Celastrus coccineus. Liriodendron tulipifera. Nyssa sylvatica. Magnolia Umbrella. Viburnum Lentago. Juglans nigra. Salix nigra. Salix fragilis. Salix cordata. Salix longifolia. Salix Babylonica. Salix alba var. carulea. Celastrus tinctoria.	Pinus pungens. Pinus mitis. Prunus nigra. Pinus echinata. Prunus nigra. Populus alba. Sassafras Sassafras. Ficus Mariana. Ficus rubens. Ficus Canadensis. Magnolia tripetala. Salix fragilis. Salix cordata. Salix longifolia. Salix Babylonica. Salix alba var. carulea. Celastrus tinctoria.	
	Papaw, or Custard Apple. Persimmon. Pine, Gray, or Jack. Pine, Jersey Scrub. Pine, Loblolly, or Old Field. Pine, Northern Pitch. Pine, Red, or Norway. Pine, Southern Yellow, or Georgia, or Long-leaf. Pine, Table Mountain. Pine, White. Pine, Yellow, Short-leaf Pine. Pine, Canada. Poplar, Balsam. Poplar, Balsam — Varieties. Poplar, White. Red Bud, or Judas Tree. Sassafras. Spruce, Black. Spruce, Red. Spruce, White, or Car. Thorn, White, or Scarlet-fruited. Tulip Tree. Tupelo, or Sour Gum. Umbrella Tree. Viburnum, Sweet, or Sheep-berry. Walnut, Black. Willow, Black. Willow, Crack. Willow, Heart-leaved. Willow, Long-leaved. Willow, Weeping. Willow, White. Yellowwood, or Virgilia.	Asimina triloba. Diospyros Virginiana. Pinus Banksiana. Pinus Inopp. Pinus Teda. Pinus rigida. Pinus resinosa. Pinus palustris. Pinus pungens. Pinus Strobus. Pinus mitis. Prunus Americana. Populus balsamifera. Populus balsamifera var. internodia. Populus balsamifera var. latifolia. Populus balsamifera var. virginiana. Populus alba. Cercis Canadensis. Sassafras officinale. Ficus nigra. Ficus nigra var. rubra. Ficus alba. Celastrus coccineus. Liriodendron tulipifera. Nyssa sylvatica. Magnolia Umbrella. Viburnum Lentago. Juglans nigra. Salix nigra. Salix fragilis. Salix cordata. Salix longifolia. Salix Babylonica. Salix alba var. carulea. Celastrus tinctoria.	Pinus pungens. Pinus mitis. Prunus nigra. Pinus echinata. Prunus nigra. Populus alba. Sassafras Sassafras. Ficus Mariana. Ficus rubens. Ficus Canadensis. Magnolia tripetala. Salix fragilis. Salix cordata. Salix longifolia. Salix Babylonica. Salix alba var. carulea. Celastrus tinctoria.	

ALPHABETICAL INDEX

OF THE FOUR SERIES OF WAYSIDE TREES.

	Series Pp.		Series Pp.		Series Pp.		Series Pp.
Able Tree	11-11	<i>Chomocyparis sphaerifera</i>	1V-21	Maple, Rock	111-11	<i>Populus monilifera</i>	11-11
<i>Ahies balsamea</i>	1V-21	Cherry, Bird	1-13	Maple, Silver	111-17	<i>Populus tremuloides</i>	11-11
<i>Acer dasycarpum</i>	111-17	Cherry, Black	1-15	Maple, Striped	111-9	<i>Prunus americana</i>	1-13
<i>Acer negundo</i>	1V-7	Cherry, Choke	1-15	Maple, Sugar	111-11	<i>Prunus nigra</i>	1-13
<i>Acer pennsylvanicum</i>	111-9	Cherry, Red	1-13	Maple, Swamp	111-19	<i>Prunus pennsylvanica</i>	1-13
<i>Acer platanoides</i>	111-19	Chestnut	111-5	Maple, White	111-17	<i>Prunus serotina</i>	1-15
<i>Acer rubrum</i>	111-19	<i>Chionanthus virginicus</i>	111-5	Mockernut	1V-3	<i>Prunus virginiana</i>	1-15
<i>Acer saccharinum</i>	111-11	<i>Chloranthus tinctoria</i>	111-16	<i>Morus rubra</i>	1-21	<i>Pyrus americana</i>	117-23
<i>Acer saccharinum</i> var. <i>nitidum</i>	111-11	<i>Cornus alternifolia</i>	111-3	Mulberry, Red	1-21	<i>Quercus alba</i>	11-17
<i>Acer spicatum</i>	111-9	<i>Cornus florida</i>	111-3	<i>Nyctagynis acerridis</i>	1V-7	<i>Quercus agrifolia</i>	11-23
<i>Azadirachta indica</i>	1V-13	Cottonwood	11-11	<i>Nyssa sylvatica</i>	1-5	<i>Quercus bicolor</i>	11-19
<i>Azadirachta indica</i>	1V-13	<i>Crataegus coccinea</i>	11-13	Oak, Basket	11-19	<i>Quercus coccinea</i>	11-21
<i>Azadirachta indica</i>	1V-13	<i>Crataegus coccinea</i> , var. <i>mollis</i>	11-13	Oak, Black	11-21	<i>Quercus, var. bicolor</i>	11-21
<i>Azadirachta indica</i>	1V-13	Cucumber Tree	1-3	Oak, Black Jack	11-23	<i>Quercus digitata</i>	11-21
<i>Azadirachta indica</i>	111-15	Cantal Apple	1-5	Oak, Bar	11-17	<i>Quercus falcata</i>	11-21
<i>Azadirachta indica</i>	111-15	<i>Diostyris virginiana</i>	1-5	Oak, Chestnut	11-19	<i>Quercus laevis</i>	11-21
Alder, Black	1-11	Dogwood, Alternate-leaved	111-3	Oak, Cow	11-19	<i>Quercus macrocarpa</i>	11-17
Arbor Vitae	1V-25	Dogwood, Flowering	111-3	Oak, Iron	11-17	<i>Quercus macrocarpa</i>	11-21
Ash, Black	1V-11	Elm, American	1-17	Oak, Laurel	11-23	<i>Quercus macrocarpa</i>	11-21
Ash, Blue	1V-9	Elm, Corky White	1-19	Oak, Overcup	11-17	<i>Quercus macrocarpa</i>	11-21
Ash, Green	1V-9	Elm, Red	1-17	Oak, Pin	11-21	<i>Quercus macrocarpa</i>	11-21
Ash, Mountain	111-23	Elm, Shaggy	1-17	Oak, Post	11-17	<i>Quercus macrocarpa</i>	11-21
Ash, Red	1V-9	Elm, White	1-17	Oak, Red	11-21	<i>Quercus macrocarpa</i>	11-21
Ash, Swamp	1V-11	<i>Elm, White</i>	1-17	Oak, Scarlet	11-21	<i>Quercus macrocarpa</i>	11-21
Ash, Water	1V-11	<i>Fagus americana</i>	11-5	Oak, Spanish	11-21	<i>Quercus macrocarpa</i>	11-21
Ash, White	1V-7	<i>Fagus americana</i>	11-5	Oak, Swamp White	11-19	<i>Quercus macrocarpa</i>	11-21
<i>Adiantum trichomanes</i>	1-5	Fir, Balsam	1V-21	Oak, Water	11-23	<i>Quercus macrocarpa</i>	11-21
Aspen	11-11	<i>Fraxinus americana</i>	1V-7	Oak, White	11-17	<i>Quercus macrocarpa</i>	11-21
Aspen, Large-toothed	11-11	<i>Fraxinus pennsylvanica</i>	1V-11	Oak, Willow	11-23	<i>Quercus macrocarpa</i>	11-21
Balm of Gilead	11-13	<i>Fraxinus pubescens</i>	1V-9	Oak, Yellow Chestnut	11-19	<i>Quercus macrocarpa</i>	11-21
Basswood	1-9	<i>Fraxinus quadrangulata</i>	1V-9	<i>Quercus virginiana</i>	11-3	<i>Salix alba</i> var. <i>caprea</i>	11-9
Basswood, Small-leaved	1-9	<i>Fraxinus sambucifolia</i>	1V-11	<i>Quercus virginiana</i>	11-3	<i>Salix babingtonii</i>	11-9
Beech	11-5	<i>Fraxinus viridis</i>	1V-9	Paper	1-5	<i>Salix cordata</i>	11-7
Beech, Water	11-5	Fring Tree	111-5	Pastinaca	1-5	<i>Salix fragilis</i>	11-7
<i>Betula alleghaniensis</i>	1-23	<i>Gleditsia triacanthos</i>	111-23	<i>Picea alba</i>	1V-23	<i>Salix longifolia</i>	11-7
<i>Betula lenta</i>	1-21	<i>Gymnocladia dioica</i>	111-21	<i>Picea nigra</i>	1V-23	<i>Salix nigra</i>	11-9
<i>Betula lenta</i>	1-23	Hackberry	1-19	<i>Picea rubra</i>	1V-23	<i>Sassafras officinale</i>	1-7
<i>Betula nigra</i>	1-25	Hackmatack	1V-21	Pignut	1V-5	<i>Sassafras officinale</i>	1-7
<i>Betula papyrifera</i>	1-25	Hawthorn	1V-21	Pin, Georgia	1V-15	Scotch Elm	11-19
<i>Betula papyrifera</i>	1-23	Hickory	1V-3	Pin, Gray	1V-19	Shagbark	1V-3
Black Birch	1-21	Hickory, Broom	1V-3	Pin, Jersey Earth	1V-17	Shoeberry	111-7
Black, Canada	1-25	Hickory, Swamp	1V-3	Pin, Loblolly	1V-15	Sour Gum	1-5
Black, Cut-leaved White	1-23	Hickory, White-heart	1V-3	Pin, Northern Pitch	1V-17	Spruce, Black	1V-23
Black, European	1-23	Holly, American	1-11	Pin, Norway	1V-19	Spruce, Cut	1V-23
Black, Gray	1-23	Hornbeam	11-3	Pin, Old-field	1V-15	Spruce, Red	1V-23
Black, Paper	1-25	Hornbeam, Hop	11-3	Pin, Red	1V-19	Spruce, White	1V-23
Black, Red	1-25	Horn Chestnut	1V-23	Pin, Southern Yellow	1V-15	Sugarbush	1-19
Black, River	1-25	<i>Ilex verticillata</i>	1-11	Pin, Table Mountain	1V-17	Sweet Bay	1-5
Black, Sweet	1-21	<i>Ilex opaca</i>	1-11	Pin, White	1V-15	Sycamore	11-23
Black, White	1-25	<i>Ilex verticillata</i>	1-11	<i>Picea canadensis</i>	1V-19	Tanacetum	11-23
Black, Yellow	1-23	Juba Tree	1-5	<i>Picea canadensis</i>	1V-19	Thorn, Scotch-leaved	11-13
Bittersweet	1V-5	<i>Juglans cinerea</i>	111-25	<i>Picea canadensis</i>	1V-19	Thorn, White	1-13
Black Hawthorn	111-7	<i>Juglans nigra</i>	111-25	<i>Picea canadensis</i>	1V-15	<i>Tilia americana</i>	1-9
Black Walnut	111-25	<i>Juglans nigra</i>	111-25	<i>Picea canadensis</i>	1V-15	<i>Tilia pubescens</i>	1-9
Box Elder	1V-7	<i>Juglans virginiana</i>	1V-25	<i>Picea canadensis</i>	1V-17	<i>Tilia pubescens</i>	1V-23
Buckeye, Field	1V-15	Kentucky Coffee Tree	111-21	<i>Picea canadensis</i>	1V-19	<i>Tilia pubescens</i>	1V-23
Buckeye, Ohio	1V-15	Larch, American	1V-21	<i>Picea canadensis</i>	1V-17	Tulle Tree	1-7
Buckeye, Sweet	1V-15	<i>Larix laricina</i>	1V-21	<i>Picea canadensis</i>	1V-15	Tupelo	1-7
Burning Bush	111-7	Linden, American	1-9	<i>Picea canadensis</i>	1V-15	<i>Ulmus americana</i>	1-13
Butternut	111-25	<i>Liquidambar styraciflua</i>	11-25	<i>Picea canadensis</i>	11-25	<i>Ulmus fulva</i>	1-13
Butterwood	11-25	<i>Liriodendron tulipifera</i>	1-7	<i>Picea canadensis</i>	1-7	<i>Ulmus racemosa</i>	1-19
<i>Caryocarpus caroliniana</i>	11-3	Locust	111-21	<i>Picea canadensis</i>	1-13	Umbrella Tree	1-5
<i>Carya alleghaniensis</i>	1V-3	Locust, Honey	111-21	<i>Picea canadensis</i>	11-13	<i>Viburnum lentago</i>	111-7
<i>Carya amara</i>	1V-3	<i>Magnolia acuminata</i>	1-3	<i>Picea canadensis</i>	11-13	<i>Viburnum lentago</i>	111-7
<i>Carya floridana</i>	1V-3	<i>Magnolia glauca</i>	1-3	<i>Picea canadensis</i>	11-13	<i>Viburnum lentago</i>	111-7
<i>Carya floridana</i>	1V-3	<i>Magnolia, Small</i>	1-3	<i>Picea canadensis</i>	11-13	<i>Viburnum, Sweet</i>	111-7
<i>Carya floridana</i>	1V-3	<i>Magnolia virginiana</i>	1-3	<i>Picea canadensis</i>	11-13	Virginia	11-19
<i>Carya floridana</i>	1V-3	<i>Magnolia virginiana</i>	1-3	<i>Picea canadensis</i>	11-13	Willow, Black	11-19
<i>Carya floridana</i>	1V-3	<i>Magnolia virginiana</i>	1-3	<i>Picea canadensis</i>	11-13	Willow, Canada	11-19
<i>Carya floridana</i>	1V-3	<i>Magnolia virginiana</i>	1-3	<i>Picea canadensis</i>	11-13	Willow, Horn-leaved	11-19
<i>Carya floridana</i>	1V-3	<i>Magnolia virginiana</i>	1-3	<i>Picea canadensis</i>	11-13	Willow, Weeping	11-19
<i>Carya floridana</i>	1V-3	<i>Magnolia virginiana</i>	1-3	<i>Picea canadensis</i>	11-13	Willow, White	11-19
<i>Carya floridana</i>	1V-3	<i>Magnolia virginiana</i>	1-3	<i>Picea canadensis</i>	11-13	Yellowwood	11-23



