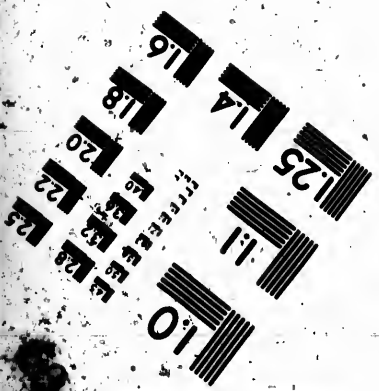
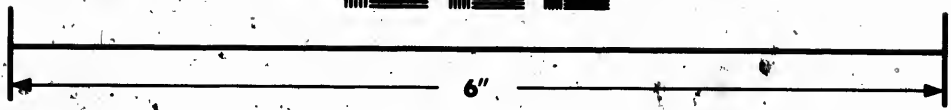
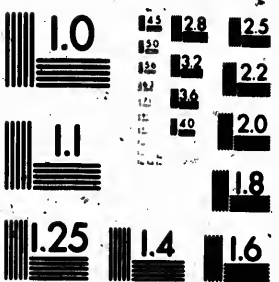


**IMAGE EVALUATION  
TEST TARGET (MT-3)**



**Photographic  
Sciences  
Corporation**

23 WEST MAIN STREET  
WEBSTER, N.Y. 14590  
(716) 872-4503

Can

**CIHM  
Microfiche  
Series  
(Monographs)**

**ICMH  
Collection de  
microfiches  
(monographies)**



**Canadian Institute for Historical Microreproductions / Institut canadien de microreproductions historiques**

**© 1991**

Technical and Bibliographic Notes / Notes techniques et bibliographiques

The Institute has attempted to obtain the best original copy available for filming. Features of this copy which may be bibliographically unique, which may alter any of the images in the reproduction, or which may significantly change the usual method of filming, are checked below.

L'Institut a microfilmé le meilleur exemplaire qu'il lui a été possible de se procurer. Les détails de cet exemplaire qui sont peut-être uniques du point de vue bibliographique, qui peuvent modifier une image reproduite, ou qui peuvent exiger une modification dans la méthode normale de filmage sont indiqués ci-dessous.

- Coloured covers/  
Couverture de couleur
- Covers damaged/  
Couverture endommagée
- Covers restored and/or laminated/  
Couverture restaurée et/ou pelliculée
- Cover/title missing/  
Le titre de couverture manque
- Coloured maps/  
Cartes géographiques en couleur
- Coloured ink (i.e. other than blue or black)/  
Encre de couleur (i.e. autre que bleue ou noire)
- Coloured plates and/or illustrations/  
Planches et/ou illustrations en couleur
- Bound with other material/  
Relié avec d'autres documents
- Tight binding may cause shadows or distortion  
along interior margin/  
La reliure serrée peut causer de l'ombre ou de la  
distorsion le long de la marge intérieure
- Blank leaves added during restoration may appear  
within the text. Whenever possible, these have  
been omitted from filming/  
Il se peut que certaines pages blanches ajoutées  
lors d'une restauration apparaissent dans le texte,  
mais, lorsque cela était possible, ces pages n'ont  
pas été filmées.
- Additional comments: /  
Commentaires supplémentaires:

- Coloured pages/  
Pages de couleur
  - Pages damaged/  
Pages endommagées
  - Pages restored and/or laminated/  
Pages restaurées et/ou pelliculées
  - Pages discoloured, stained or foxed/  
Pages décolorées, tachetées ou piquées
  - Pages detached/  
Pages détachées
  - Showthrough/  
Transparence
  - Quality of print varies/  
Qualité inégale de l'impression
  - Continuous pagination/  
Pagination continue
  - Includes index(es)/  
Comprend un (des) index
- Title on header taken from: /  
Le titre de l'en-tête provient:
- Title page of issue/  
Page de titre de la livraison
  - Caption of issue/  
Titre de départ de la livraison
  - Masthead/  
Générique (périodiques) de la livraison

This item is filmed at the reduction ratio checked below/  
Ce document est filmé au taux de réduction indiqué ci-dessous.

10X	14X	18X	22X	26X	30X
<input type="checkbox"/>	<input type="checkbox"/>	<input checked="" type="checkbox"/>	<input type="checkbox"/>	<input type="checkbox"/>	<input type="checkbox"/>
12X	16X	20X	24X	28X	32X

SEND FOR A TRIAL BELT—IT WILL SUIT YOU.

## Dick's Patent Gutta-Percha Canvas Belting

MADE OF GUTTA-PERCHA, BALATA AND COTTON DUCK.



These Driving Belts have now been in use for several years in all the Manufacturing Districts of Great Britain ; in the Colonies of Australia and India and the Cape ; also in many of the German, French, Italian and Austrian Manufacturing Districts. They are also used in Argentina, Chili, Japan, China and Spain, with good results.

The principal virtue in these Belts consists in their comparative freedom from stretch. They consequently seldom slip, or require taking up, thus saving time and labour. They can be used in any atmosphere, and are specially recommended where Belts are exposed to damp. They have also been proved to be admirably adapted for Lathe and Machine Driving, while for cross-driving and running on small pulleys they have been found equally serviceable, having been thoroughly tested at this work.

An important feature of these Belts is that they are uniform throughout, they are not sewed, and have no joints like leather Belts, and thus a source of weakness is avoided. The ends can be joined by lacing, or with any of the fasteners used to join other Belts, same as leather.

An enormous number of these Belts are now at work in the four corners of the world, and very favorable reports and testimonials have been received from the users. References can be given from everywhere.

All the Principal Large Manufacturers in Canada are Using this Belting.

TRY IT !



IT IS THE BEST !

J. S. YOUNG, 15 Hospital Street, Montreal, P. Q.

10 PER CENT. OFF. **LIST OF PRICES PER FOOT.**

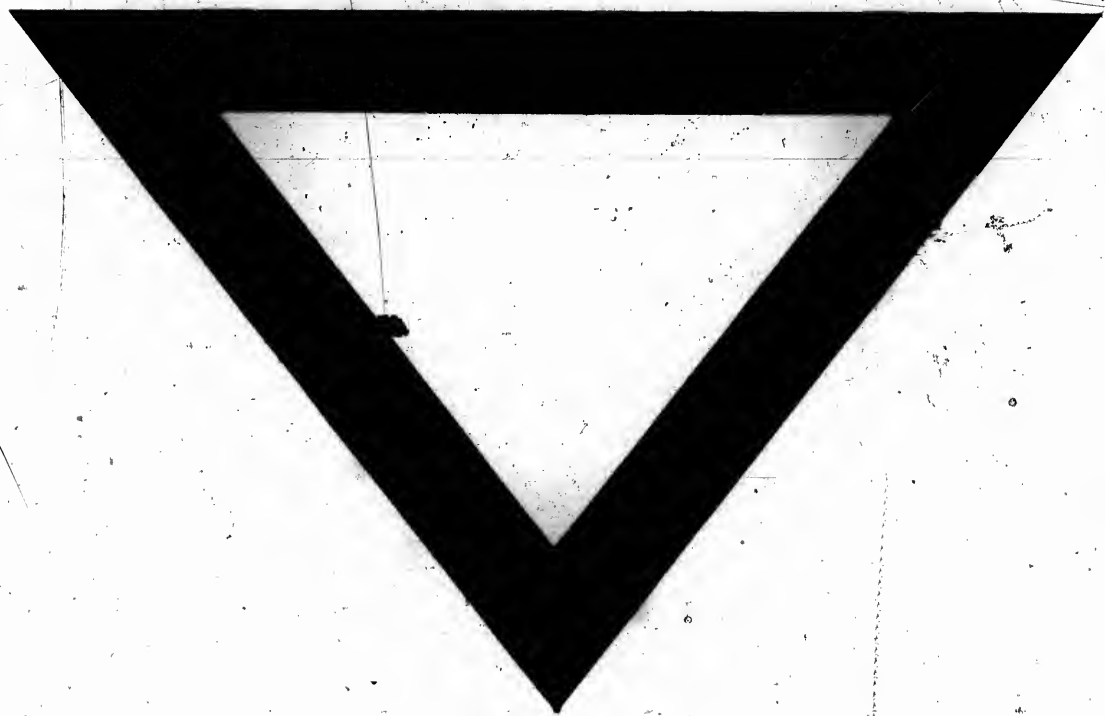
Width	Ply	Price $\frac{1}{2}$ Foot	Width	Ply	Price $\frac{1}{2}$ Foot	Width	Ply	Price $\frac{1}{2}$ Foot	Width	Ply	Price $\frac{1}{2}$ Foot
1"	3	.06 $\frac{1}{2}$	..	4	..	2 $\frac{1}{2}$ "	5	..	4 $\frac{1}{2}$ "	6	..
1 $\frac{1}{2}$ "	..	.09	..	..	..	3"	..	.35	5"	..	..
2"	..	.12	2"	..	.21	3 $\frac{1}{2}$ "	..	..	5 $\frac{1}{2}$ "	..	..
2 $\frac{1}{2}$ "	..	.18	2 $\frac{1}{2}$ "	4	.24	4"	..	.41	6"	..	..
3"	..	.20 $\frac{1}{2}$	3"	..	.30	4 $\frac{1}{2}$ "	..	.45	6 $\frac{1}{2}$ "	..	..
3 $\frac{1}{2}$ "	..	.28 $\frac{1}{2}$	3 $\frac{1}{2}$ "	..	.35	5"	5	..	7"	..	..
4"	..	.30	4"	..	.41	5 $\frac{1}{2}$ "	..	.47	7 $\frac{1}{2}$ "	..	..
4 $\frac{1}{2}$ "	..	.35	4 $\frac{1}{2}$ "	..	.46	6"	..	.53	8"	6	.56
5"	..	.38 $\frac{1}{2}$	5"	..	.53	6 $\frac{1}{2}$ "	..	.61	8 $\frac{1}{2}$ "	..	.69
5 $\frac{1}{2}$ "	..	.43	5 $\frac{1}{2}$ "	..	.58	7"	..	.67	9"	..	.76
6"	..	.46	6"	..	.63	7 $\frac{1}{2}$ "	..	.71	9 $\frac{1}{2}$ "	..	.85
7"	..	.52	7"	..	.71	8"	..	.78	10"	..	.93
8"	..	.60	8"	..	.88	8 $\frac{1}{2}$ "	..	.88	10 $\frac{1}{2}$ "	..	1.02
9"	..	.70	9"	..	1.02	9"	..	1.05	11"	..	1.21
10"	..	.82	10"	..	1.10	9 $\frac{1}{2}$ "	..	1.18	11 $\frac{1}{2}$ "	..	1.48
11"	..	.92	11"	..	1.18	10"	..	1.30	12"	..	1.65
12"	..	1.04	12"	..	1.30	10 $\frac{1}{2}$ "	..	1.40	12 $\frac{1}{2}$ "	..	1.85
						11 $\frac{1}{2}$ "	..	1.52	13"	..	2.08

CAN SUPPLY ANY SIZED BELT AT ABOVE PROPORTIONATE PRICES UPON SUFFICIENT NOTICE BEING GIVEN.

J. S. YOUNG, 15 Hospital Street, Montreal.

CAN REFER YOU TO THE LEADING CONCERNS IN CANADA.

+ Samples +









The copy filmed here has been reproduced thanks to the generosity of:

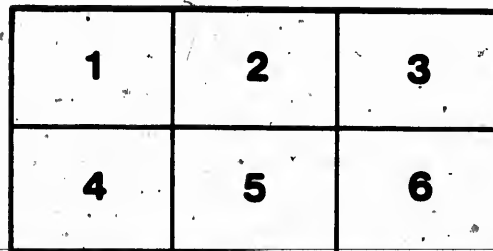
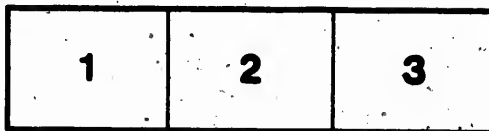
Library of the National Archives of Canada

The images appearing here are the best quality possible considering the condition and legibility of the original copy and in keeping with the filming contract specifications.

Original copies in printed paper covers are filmed beginning with the front cover and ending on the last page with a printed or illustrated impression, or the back cover when appropriate. All other original copies are filmed beginning on the first page with a printed or illustrated impression, and ending on the last page with a printed or illustrated impression.

The last recorded frame on each microfiche shall contain the symbol  $\rightarrow$  (meaning "CONTINUED"), or the symbol  $\nabla$  (meaning "END"), whichever applies.

Maps, plates, charts, etc., may be filmed at different reduction ratios. Those too large to be entirely included in one exposure are filmed beginning in the upper left hand corner, left to right and top to bottom, as many frames as required. The following diagrams illustrate the method:



L'exemplaire filmé fut reproduit grâce à la générosité de:

La bibliothèque des Archives nationales du Canada

Les images suivantes ont été reproduites avec le plus grand soin, compte tenu de la condition et de la netteté de l'exemplaire filmé, et en conformité avec les conditions du contrat de filmage.

Les exemplaires originaux dont la couverture en papier est imprimée sont filmés en commençant par le premier plat et en terminant soit par la dernière page qui comporte une empreinte d'impression ou d'illustration, soit par le second plat, selon le cas. Tous les autres exemplaires originaux sont filmés en commençant par la première page qui comporte une empreinte d'impression ou d'illustration et en terminant par la dernière page qui comporte une telle empreinte.

Un des symboles suivants apparaîtra sur la dernière image de chaque microfiche, selon le cas: le symbole  $\rightarrow$  signifie "A SUIVRE", le symbole  $\nabla$  signifie "FIN".

Les cartes, planches, tableaux, etc., peuvent être filmés à des taux de réduction différents. Lorsque le document est trop grand pour être reproduit en un seul cliché, il est filmé à partir de l'angle supérieur gauche, de gauche à droite, et de haut en bas, en prenant le nombre d'images nécessaire. Les diagrammes suivants illustrent la méthode:

