

Old
McGill

1900-01

Ix82M
·SYh

PRESENTED TO THE LIBRARY

BY

Secretary McGill M.C.A.

Ix82M



SYh
1900
.01

No. 103783

Library of McGill University

MONTREAL.

Received 1905

Mc
St
Ha

YOU

Mc

Published

BRARY
n.ca
SYH
1900
-01
M:GILL
ersity

McGill Student's Hand-Book.

1900-'01.

PRESENTED BY THE
YOUNG MEN'S CHRISTIAN
ASSOCIATION

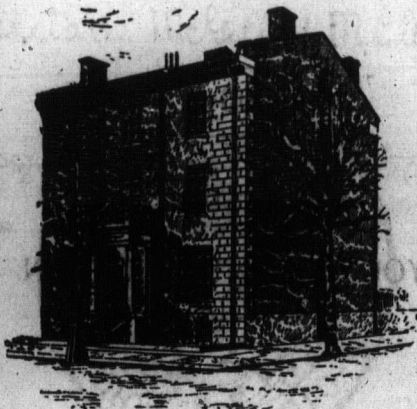
...OF...

McGILL UNIVERSITY.

No. 11.

Published by The Young Men's Christian Association
of McGill University,
MONTREAL.

McGill
Student's
Hand-Book.



YOUNG MEN'S CHRISTIAN ASSOCIATION OF MCGILL
UNIVERSITY, CORNER OF SHERBROOKE ST.
AND MCGILL COLLEGE AVENUE.

Telephone No. Up 1086

Published by The Young Men's Christian Association
of McGill University
MONTREAL

TIME TABLE. (Fall Term)

8-9	9-10	10-11	11-12	'12-1	1-2	2-3	3-4	4-5	5-6
-----	------	-------	-------	-------	-----	-----	-----	-----	-----

103201

TIME TABLE. (Fall Term)

	8-9	9-10	10-11	11-12	12-1	1-2	2-3	3-4	4-5	5-6
M										
T										
W										
L										
F										
S										
S										

PRAYER SERVICE IN Y. M. C. A. 8.40 to 8.55.

Church Services

Y. M. C. A. Meeting

103783

McGILL ST.

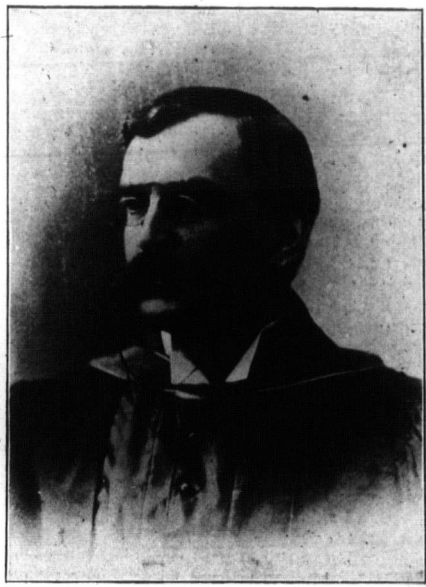
HASH
ST
M

Greeting.



TO all students of Old McGill, greeting. The Young Men's Christian Association of McGill University takes pleasure in extending a hearty welcome to the new students and a cordial invitation to all—new and old—to avail themselves of the privileges of the Association Building, No. 844 Sherbrooke St. If those who are coming to the city as strangers, will kindly write the General Secretary, giving the time and train by which they expect to arrive, members of the Association will be pleased to meet them at the station and be of any service possible.

l, greet-
hristian
r takes
come to
vitation
selves
Bulld-
se who
s, will
giving
expect
on will
on and



PRINCIPAL PETERSON

The Student and the McGill Y. M. C. A.

MY DEAR FRIEND :

Are you a Freshman or new Student, not having as yet given any anxious or careful thoughts to your spiritual state, and your relations to the salvation offered by our Divine Redeemer? If so, Christ's great invitation—"Seek *first* the Kingdom of God, and His righteousness,"—that is, His pardoning and justifying grace, and the holiness of character which comes of the working of His spirit in the renewed heart,—this should have your first thought in your present new position, where you will have new surroundings, new companions, new temptations, and where every day of delay may remove you further from the great change which trust in Christ will effect. Every hour's delay here is dangerous. There are, it is true, many means of grace open to you, the preaching of the Gospel in the different Churches, and by evangelists; the reading of the scriptures; meditation and prayer; but I may truly say that none of these claim earlier attention than the Y. M. C. A., one function of which is to attract your attention to all other means of spiritual enlightenment and growth.

But perhaps you are already a Christian, and desirous of growing in the Christian life. If so, the call is still quite as urgent, for you have not only the will of your Saviour to consult, but probably also the kind wishes and prayers of loving Christian friends at home; and you are in a position at once to make a new advance in your Christian life by becoming an active member of the Association, and thus making your influence for good felt, as well as further promoting your own spiritual life by all the various means provided by the Asso-

ciation
streng
kindre
in go
the be
and y
for pr
ment,
readin
missio
You w
persor
and t
Unive
intere

But
Kingd
there
necess
He go
added
Unive
scienc
skill r
have t
spiritu
endea
life th
may
blessin
Y. M. C
and th
will b
career
in edu
you m
on you
air an
streng
also u
motto

C.A.

nt, not
careful
d your
Divine
ation—
nd His
ng and
narter
pirit in
ve your
n, where
w com-
very day
rom the
ll effect.
There
n to you,
different
eading of
r; but I
m earlier
nction of
all other
d growth.
Christian,
stian life.
t, for you
aviour to
wishes and
at home ;
to make a
becoming
, and thus
, as well as
ual life by
the Asso-

ciation. You will also enjoy the comfort and strength which proceed from the society of kindred minds aiding each other in love and in good works. They can introduce you to the best friends among your fellow-students; and you will find very helpful their meetings for prayer and praise, and mutual encouragement, their Bible-classes, their library and reading-room, their connection with student missionary bands in Canada and elsewhere. You will also have increased opportunities for personal influence among your fellow-students, and to those members and friends of the University other than students, who take an interest in your higher welfare.

But Christ in His invitation to seek first the Kingdom of God, recognizes the fact that there are other things to be sought, things necessary or desirable in our life here ; and He goes on to say "all these things shall be added unto you." You have come to the University for education in literature and science, or for training in the knowledge and skill required for a useful profession. Now we have the sure promise that if we seek first the spiritual life, God will so bless our earnest endeavors after the things really good in this life that we may seek after, or need. You may therefore reckon that, with God's blessing, any time you may devote to the Y.M.C.A., will be more than made up to you, and that now as in time past, the godly student will be the most successful in his College career. I would here say, that as your progress in education is your chief duty as a student, you may confidently ask God for His blessing on your conscientious efforts ; and also on the air and exercise necessary to keep up your strength for this purpose. The Y.M.C.A. also undertakes to aid you in this, one of its mottoes being, "*Mens sana in corpore sano.*"

To sum up the whole matter, I earnestly advise every student *at once* to join the Y. M. C. A. for his own sake, for the sake of his fellow-students, and for Christ's sake; as well as for the sake of the University, and for the satisfaction and happiness of all your Christian friends and relations everywhere.

"Them that honor me, I will honor," is a divine promise that will never fail.

Your sincere well-wisher,

J. W. D.

(This letter, kindly written for last year's hand-book by the late Emeritus Principal, and Honorary President of our Association, Sir William Dawson, will now appeal with particular force to all McGill men.)



Ide
the U
Stu
Con
Gener
ing.
Do
will n
tised
Don't
good
Don
You c
week
Sub
Wat
import
You
of infl
while
Be a
Kee
behind
New
selves
this the
the dif
get to
facultie
Do n
or Col
emie
subscri
possibl
It is
every v
the Un

earnestly
join the
sake of
ake; as
and for
all your
here.
or," is a
D. woY
t year's
pal, and
on, Sir
h parti-

If you are in doubt about the matter do not hesitate to ask a Professor or Senior Graduate; they will always be glad to give you any advice or assistance they may have.

Pointers.

Identify yourself with the religious life of the University by joining the Association.

Study the calendar.

Consult the list of boarding houses at the General Secretary's Office, Association Building.

Do not buy books until you are sure you will need them. You will find them advertised second-hand on the bulletin boards. Don't take your notes on scraps of paper. Buy good note books.

Don't get up your college work on Sunday. You can't do as much work in seven days a week as you can in six.

Subscribe for the College paper.

Watch the various bulletins, as notices of importance are constantly being posted.

You will never have the same opportunity of influencing others for good as you have while at College. Use it.

Be a University rather than a faculty man.

Keep up with your work. When once behind you cannot catch up.

New students are urged to connect themselves with the college societies. By doing this they will not only derive the benefits which the different societies aim to confer, but will get to know students of other years and other faculties.

Do not treat the men collecting subscriptions or College societies or other objects, as public enemies, but rather lighten their work by subscribing as often and as promptly as you possibly can.

It is the duty of every student to support in every way he can all the athletic interests of the University.

If you are in doubt about any matter do not hesitate to ask a Professor or Senior Student ; they will always be glad to give you any advice or assistance, and it may save you much trouble and annoyance later on to be set right at the beginning of the session.

BEFORE MAKING PURCHASES REFER TO OUR ADVERTISEMENTS, and patronize as far as possible those whose ads. appear there, mentioning this hand-book.

The General Secretary desires to be considered the friend of every student. His office hours will be announced at the beginning of the session.

Take every opportunity of improving yourself socially ; your studies will not suffer for an occasional evening spent in social intercourse.

The importance of taking good healthy exercise cannot be too strongly impressed upon all. Make inquiries and find out what sports are engaged in ; then choose what suits you. We would put in a strong plea for the gymnasium ; three to five hours spent in it every week will repay any student. Remember "*Mens sana in corpore sano.*"

Have your letters addressed to the Faculty which you intend to enter.

Register your name and address at the Association office.

Gowns may be obtained from the Janitors of the various buildings.

COLLEGE YELL—M-C-G-I-L-L. What's the matter with old McGill, she's all right, oh yes, you bet !!!

You can get nearly all your books second-hand by referring to the notice board.

Take your own notes on all the subjects and revise them at least once a week.

If you are a Theological student be sure and join in the class scraps and don't wear a white tie.

AR

Sci
caps,
of the
Buy
You v
Sci

Meo
tender
found
Buildi
colors,
Firs
when
and be
earlier
Don
bones.
Get
before

MEI
What's
right,
Sho
the Co
Join
"W;
you lik
"Le
But
Tha
May
But

ARTS YELL:—

B. A., M. A., L. L. D..

Sumus in facultate

ARTS !

Science students can get gowns, overalls, caps, drawing boards, &c., from the Janitor of the Engineering building.

Buy only the best drawing instruments. You will find them economical in the end.

SCIENCE YELL ;—

Ra ! Re ! Ri !

K. C. Y.

Log. tan. phi.

Fac. App. Sci. ! ! !

Medical Freshmen are recommended to the tender mercies of "Mr. Cook," who will be found awaiting them at the door of the Medical Building. From him aprons, sleeves, college colors, and general information can be obtained.

First year men in Medicine should find out when dissecting material is to be given out, and be on hand, as they will thus get to work earlier.

Don't attempt to study anatomy without bones.

Get the advice of a friend in a senior class, before buying instruments and books.

MEDICINE YELL :—M-E-D-I-C-I-N-E.—

What's the matter with Medicine, she's all right, oh yes, you bet ! ! !

Show your University spirit by supporting the College paper.

Join your Faculty Bible-Study Class.

"Watch ye, stand fast in the faith, quit you like men, be strong."

"Let knowledge grow from more to more ;

But more of reverence in us dwell,

That mind and soul according well,

May make one music as before,

But vaster."

McGill University.

A FEW DATES.

- 1821 University founded by Hon. Jas. McGill.
1829 College opened in Burnside House,
Principal, Rev. Dr. Mountain.
1835 Dr. Mountain resigned, Rev. Dr.
Bethune appointed Principal.
1843 Present Arts Building opened.
1846 E. A. Meredith, succeeds Dr. Bethune
as Principal.
1852 University re-organized under its new
charter.
1853 Hon. Justice C. D. Day, LL. D.,
appointed Honorary Principal.
1855 Dr. J. W. Dawson, Principal. Permanent
endowment fund created.
1861 Erection of Molson Hall. Library
founded.
1863 Observatory built.
1866 Main building of Faculty of Medicine
opened.
1878 Department of Applied Science created
a faculty.
1881 Peter Redpath Museum built.
1884 Donaldson special course for women
endowed by Sir Donald Smith.
1885 Medical building extended by the Camp-
bell Memorial Fund, the gift of Sir
Donald Smith.
1890 The Thomas Workman Mechanical
Workshops erected by the bequest of
Thomas Workman, Esq., and the
gift of W. C. McDonald, Esq.

The
includ
depar
privil
in nat
a Chr
and h
studen

Any
studen
a men
\$1.00
meetin
presen
The
men o
of an
Associ

Duri
meeting
course
3 to 4
Univers
of a pra

Class
faculties
the foll
fourth
course
year wil
Gospels.

University Societies.



The Young Men's Christian Association.

This is distinctively a college organization, including in its membership men of every department in the University. It extends the privilege of a religious influence, non-sectarian in nature and profession. It seeks to develop a Christian character at once broad and true, and hence will commend itself to the thoughtful student.

Membership.

Any man of good moral character, either student or member of the Faculty, may become a member on payment of a minimum fee of \$1.00 and after election at the semi-annual meeting by a two-thirds vote of the members present.

The Active membership is composed of men of the above standing who are members of an Evangelical church. Others rank as Associate members.

Meetings.

During the session of 1900-01, the religious meetings of the Association will include a course of addresses on Sunday afternoons from 3 to 4 o'clock, by prominent members of the University and friends from the city, on subjects of a practical character.

Bible Study.

Classes will be formed in the various faculties at the opening of the session, under the following arrangement: Second, third and fourth years of each faculty will take up a course in the Acts and Epistles. The first year will study the life of Christ from the Gospels.

LEADERS.

COURSE.	FACULTY.	LEADER.
Acts and Epistles.	Medicine and Comp. Med...	GENERAL SECRETARY.
“	Arts and Law.....	GEORGE IRVING.....'02
“	Science.....	W. H. DEBLOIS.....'01
Life of Christ . . .	Medicine and Comp. Med ..	A. W. PARK.....'03
“	Arts and Law	G. W. TROOP.....'03
“	Science.....	W. G. MCBRIDE.....'02

Every student is earnestly invited to join with members of his year in systematic study of the Bible.

Besides other occasional social gatherings, of which due notice will be given, a regular meeting for friendly intercourse is held every

Saturday refreshment and a membership is invited possible

Hon. 1
President
1st Vice
2nd
Rec. S
Treasu
Asst. - 1
Genera

Religio
Bible st
Social,
Membe
Mission
Musical
Finance
Work fo
Building
Gradua

Y

(Est

The c
ment of
and the
particul
Univers
of the R

Saturday evening, including games, music and refreshments. To attend this, a standing invitation is extended to all. The building and all its privileges are at the disposal of members of the University and every student is invited to make use of them to the fullest possible extent.

OFFICERS FOR 1900-01.

Hon. President -
President - - - C. S. PATERSON, Sc. '01
1st Vice-Pres. W.G. MACNAUGHTON, Arts '01
2nd " - - A. L. KENDALL, Med. '01
Rec. Secretary - - H. CARSON, Arts '02
Treasurer - - - W. H. DEBLOIS, Sc. '01
Asst.-Treas. - - - A. W. PARK, Med. '03
General Secretary - JAS. R. COX, M.D., '00

CHAIRMEN OF COMMITTEES.

Religious Meeting, A. L. KENDALL, Med. '01
Bible study, - - - W. G. BROWN, B.A.
Social, - R. C. PATERSON, B.A., Med. '02
Membership, W. G. MACNAUGHTON, Arts '01
Missionary, - - E. C. WOODLEY, B.A.
Musical, - - - H. M. LLOYD, Sc. '01
Finance, - - - W. H. DEBLOIS, Sc. '01
Work for New Students, GENERAL SECRETARY
Building, - - - C. S. PATERSON, Sc. '01
Graduate, - - - W. F. HAMILTON, M.D.

Young Women's Christian Association.

(Established 1887 as The Theodora Society.)

The object of the Association is the development of Christian character in the members, and the prosecution of active Christian work, particularly among the young women of the University. Open for membership to students of the Royal Victoria College for Women.

to join
ic study
herings,
regular
d every

OFFICERS, SESSION 1900-01.

President, - - - WINIFRED BENNETT, '01
Vice-President, - ELIZABETH IRVING, '02
Cor. Secretary, - - - HARRIET PAGE, '01
Treasurer, - - FLORENCE WOODLEY, '03
Rec. Secretary, - MARGARET HADRILL, '03
Reporter, - - - - GRACE WALES, '03

CONVENERS OF COMMITTEES.

Devotional - - - - HARRIET PAGE, '01
Theodora - - - - JESSIE MCLACHLAN, '02
Membership - - - - EVELYN MOLSON, '01
Relief - - - - MARY FLINT, '01

Canadian Colleges' Mission.

The "C.C.M." is an organization that aims to unite the scholars and students of the various educational institutions of the Dominion in Foreign Missionary interest and effort.

The objects of the mission are :

- (a) To propagate the gospel of Christ in Corea and other unevangelized nations.
- (b) To foster the missionary spirit in Canadian colleges.

The McGill Y.M.C.A. has joined in the movement, and our members are invited to contribute regularly to its support.

Undergraduates' Literary Society.

Every student should join this Society. It offers to the undergraduate of the University a chance to cultivate his literary taste and to promote his power of oratory, and forms a part of a University training which no student can afford to neglect. The members of this society hold an annual Inter-Collegiate Debate with the students of Toronto University.

Hon.
Presid
1st Vic
Secret
Treasu
Report

Comm

The
nection
fortnigh
Its o
of thoug
By mea
aims to
question

Presider
Vice-Pre
Sec.-Tre

Commit

Th
The m
of all en
Medicine
The m
day ever

OFFICERS 1900-01.

Hon. President,	PRIN. PETERSON, LL.D.
President, - -	W. G. MACNAUGHTON, '01
1st Vice-President, -	E. W. WESTOVER, '02
Secretary, - - - -	C. A. ADAMS, '02
Treasurer,	M. JACK, '02
Reporters, {	D. R. WHITE, '01
	G. C. COUTURE '03
	A. W. LOCHEAD '01
	R. J. HARPER, '01
Committee, {	C. W. MUNN, '02
	G. JOHNSON, '03
	E. PARKINS, '03

Delta Sigma Society.

(Established 1884).

The Delta Sigma Literary Society—in connection with the Royal Victoria College—holds fortnightly meetings throughout the year.

Its object is the development of clearness of thought and expression among its members. By means of debates, essays, readings, etc., it aims to give culture and information on questions of the day.

OFFICERS, SESSION 1900-01.

President, - - - -	EVELYN MOLSON, '01
Vice-President, -	ELIZABETH IRVING, '02
Sec. - Treasurer, -	CATHARINE WISDOM, '03
	BELLA MARCUSE, B.A.
Committee, {	WINIFRED BENNETT, '01
	MIRIAM G. SMITH '02
	MAUD PARKIN, '03

The McGill Medical Society.

The membership of this society is composed of all enregistered students of the Faculty of Medicine.

The meetings are held every alternate Friday evening, when the members read and

discuss papers relating to medical science, and report special cases under observation at the hospitals.

Two senior and two junior prizes are offered annually for the two best papers in each class of subjects.

The Students' reading room has been placed under the control of this Society, in which the leading English and American Medical Journals are on file, as well as the leading daily and weekly newspapers of the Dominion.

Beginning with the session 1898-99 the papers read before the Society will be typewritten, bound and placed for reference in the Faculty library.

OFFICERS, SESSION 1900-01.

Hon. President,	. . .	DR. F. G. FINLEY
President,	W. L. TAYLOR, '01
Vice-President,	J. A. WARD, '01
Secretary,	J. A. MACNAUGHTON, '02
Asst. Secretary,	G. H. TURNER, '03
Treasurer,	H. L. PAVEY, '02
Reporter,	H. McN. COLLISON, '01
Pathologist,	J. BRUCE, '01
Councilmen,	{ DR. C. F. MARTIN
	 DR. J. M. ELDER
	 J. M. MCCULLOUGH, '03

McGill Mining Society.

Membership is composed of graduates and undergraduates of the Faculty of Applied Science. Papers and discussions on scientific subjects, supplied principally by members of the Society, form the programmes.

Every student in the Faculty is urged to become a member.

OFFICERS, SESSION 1900-01.

Honorary Pres.,	. . .	DR. B. J. HARRINGTON
President,	A. R. ARCHER, '01
Vice-President,	E. E. PALMER, '01
Sec.-Treasurer,	H. P. DEPENCIER, '02

Hon. Presi

1st V
R
2nd V

3rd V

Secre
Treas
Secor
Repre

Repoi

Chair

The
The
of stu
Medic
scienc

Hon.)
Presid
1st Vic
2nd
Librar
Secrets

The
the stu
vation

Preside
Vice-Pi
Secreta
Treasur

Committ

Applied Science Society.

ORGANIZED 1897.

Hon. President, PROF. H. T. BOVEY.
 President, H. A. BURSON, '01
 Representing Electrical Engineering.
 1st Vice-President, B. S. MCKENZIE, B.A., '01
 Representing Mining Engineering and Chemistry.
 2nd Vice-President, S. B. CLEMENT, '01
 Representing Civil Engineering.
 3rd Vice-President, R. C. WILSON, '01
 Representing Mechanical Engineering.
 Secretary, C. V. CORLESS
 Treasurer, A. E. BECK
 Second Year
 Representatives } MACKAY AND HALL
 Reporters { A. R. ARCHER
 H. E. SCOTT
 G. M. PYKE
 Chairman Editorial Board, A. R. ARCHER

The Veterinary Medical Association.

The membership of this society is composed of students of the Faculty of Comparative Medicine. Papers relating to veterinary science are read and discussed at each meeting.

OFFICERS, SESSION 1900-01.

Hon. President, D. MCEACHRAN, F.R.C.V.S.
 President, M. C. BAKER, D.V.S.
 1st Vice-President, C. H. HIGGINS D.V.S.
 2nd " " B. A. SUGDEN, D.V.S.
 Librarian, F. T. ALLAN
 Secretary-Treasurer, B. F. HUMPHREY

Historical Society.

The aim of the Historical Society is at once the study of historical problems and the cultivation of social relations among its members.

OFFICERS FOR 1900-01.

President, H. S. WILLIAMS, '01
 Vice-President, A. W. LOCHEAD, '01
 Secretary, S. MITCHELL, '01
 Treasurer, C. A. ADAMS, '02
 Committee { DR. COLBY
 E. G. PLACE, B.A.
 E. C. WOODLEY, B.A.

College Publications.

"THE MCGILL OUTLOOK"

which serves as a medium of communication between students of all the faculties, graduates, and other Colleges, is published weekly. Every student should be a contributor and help to make it worthy of the name of "Old McGill."

EDITORIAL BOARD.

J. H. COPEMAN, Editor in Chief, Arts, '01
L. F. ROBERTSON, B.A., - - - Med. '01
B. S. MCKENZIE, B.A., - - - Sc. '01
A. WAINWRIGHT, B. A., - - - Law, '02
- - - - - R. V. C.

"THE ANNUAL"

is a publication that has already passed through four very successful issues. It is replete with all kinds of useful information regarding undergraduate life at McGill. It is published by the Junior Year and costs \$2.00.

"THE HAND-BOOK"

is issued annually by the University Y. M. C. A. and the present is the eleventh issue. It is prepared with a view to supplying information to new students as well as containing information of use to all, new and old. It is now looked upon as one of the annual features of our College life.

Mc
Assoc
train
to ma
It is t

Hon.
Hon.
Presic
Vice-
Secret
Treas

Arts,
Law,
Medic
Scienc

T
and m
organi
three t
and ju
faculty
the col
hoped
play w
to that
It is
the Ph
before

Athletics.

McGill men are justly proud of their Athletic Association. Every man should, if possible, train for some event on Sports Days and help to make it even more successful than formerly. It is usually held about the middle of October.

OFFICERS FOR 1900-01.

Hon. President, . . . PRINCIPAL PETERSON
Hon. Treasurer . . . DR. OSLER
President, . . . J. H. BOULTER, Arts '01
Vice-President, . . . F. J. TEES, Arts '01
Secretary, . . . L. H. REDON, Med. '01
Treasurer, . . . P. W. K. ROBERTSON, B.Sc.

REPRESENTATIVES.

Arts, . . . P. MOLSON, '01
Law, . . . J. A. MANN, '02
Medicine, . . . JOHN COLBY, B.A., '02
Science, . . . R. C. WILSON, '01

Rugby Football Club.

This is at once one of the most popular and most prosperous of the various athletic organizations in the college. It embraces three teams, known as the senior, intermediate, and junior, respectively, besides the various faculty and year teams. Practice begins on the college campus about Sept. 15th, but it is hoped and expected that all who intend to play will endeavor to get into condition prior to that date.

It is necessary to obtain a certificate from the Physical Director at the College Gym. before beginning practice.

OFFICERS FOR 1900-01.

Hon. President, - - C. J. FLEET, B.C.L.
 Hon. Treasurer, - PROF. C. H. MCLEOD
 President, A. C. P. HOWARD, B.A., Med. '01
 Vice-President, - GEO. R. JOHNSON, Med.
 Secretary, - - - - F. S. PATCH, B.A.
 Treasurer, - - - J. A. MOWATT, Arts, '01
 Captain 1st XV - R. W. KENNY, Med. '03
 Captain 2nd XV C. G. MCKINNON, B.A., Med.
 Captain 3rd XV - J. J. ANDREWS, Med., '03
 Manager - - - - E. G. MASON, Med., '02

COMMITTEE.

Arts, P. MOLSON, '01; E. W. MCDUGALL '02
 Med., R. SHILLINGTON, '03; W. CARTER, '02
 App. Sci., E. G. HAMPSON, '01; SAVAGE, '03
 Law, J. I. MEAGHER, '02; W. LESLIE, '02

McGill University Cricket Club.

This consists of graduate, undergraduate and non-academic members, the number of the latter being restricted to twenty. The annual subscription is \$2.00, for students, and for all others, \$5.00. The game is played from May 1st to Sept. 15th and practices take place daily, after 4 p.m.

OFFICERS 1900-01.

President, - - - - PROF. C. E. MOYSE
 Vice-Pres., - - - A. B. OUGHTRED, B.C.L.
 Secretary, - - - - H. WONHAM
 Treasurer, - - - H. M. LITTLE, Med. '03

University Lawn Tennis Club.

This Club has three grass courts on the college grounds, and two additional ash courts in front of the Physics Building. Within the enclosure is a pavilion furnished with lockers and a shower bath.

Outs
 associa
 the har
 FEE:
 bers, \$

Preside
 Vice-Pi
 Secreta
 Treasur

Applied
 Arts,
 Medicin
 Law,

McG

This
 on the C
 a regula
 two rinl
 general :

Presiden
 Vice-Pre
 Treasure
 Secretary

This is
 organizati
 are playe
 various fa
 tative of t
 latter com

Outsiders are admitted to the club as associate members, but the management is in the hands of the Graduates and Students.

FEES.—Graduates and non-academic members, \$5.00, Undergraduates, \$2.00.

OFFICERS 1900-01.

President, - - - J. A. FAIRIE, Med. '02
Vice-President, - - - G. G. M. COPE
Secretary, - - - J. J. MEAGHER, Law, '02
Treasurer, - - - R. N. HICKSON, Arts, '01

COMMITTEE.

Applied Science, - - - H. M. SCOTT, '01
Arts, - - - P. MOLSON, '01
Medicine, - - - F. F. WILKINS, '01
Law, - - - W. M. SKINNER, '01

McGill University Skating Club.

This organization has charge of the rinks on the College campus, that have now become a regular winter institution. There are now two rinks, one for hockey and the other for general skating.

OFFICERS.

President, - - - R. HICKSON, Arts, '01
Vice-President, A. H. MACLAREN, Med., '02
Treasurer, - - - A. H. DUFF, B.A., Law
Secretary, - - - A. P. GLASSCO, Science, '01

McGill Hockey Club.

This is one of the younger, but very popular organizations. Under its auspices, matches are played between the different years of the various faculties and between teams representative of the various faculties as a whole. The latter compete for a handsome trophy present-

ed by Professors Capper and Porter. In time it is hoped an intercollegiate league will be organized.

OFFICERS.

Hon. President, . . . PROF. S. H. CAPPER
President, . . . C. CARTWRIGHT, Med.
Vice-President, . . . W. NESS, Med. '02
Sec.-Treas., C. G. MCKINNON, B.A. Med. '01
Captain, . . . R. HOWARD, Science, '01

The Intercollegiate Athletic Association.

The first Intercollegiate Track Athletic Meet between Toronto, Varsity and McGill will be held in Montreal on the third Friday in October. The committee of management for 1900 is as follows:

President,
Vice-President,
Secretary,
Treasurer,
Committee



TEL
MAI

M

19

All wor
on the p

TELEPHONE
MAIN 2356

PIE DAY



GEO. B.
SADLER

MERCHANT
...TAILOR

1986 NOTRE DAME ST.



All work done
on the premises

Special Rates to
McGill Men.

FIELD DAY.

EVENTS.	RECORD.	1.	2.	3.	4.	5.	6.	7.	8.	9.	10.	11.	12.	13.	14.	15.	16.	17.	18.	19.	20.	21.	22.	
1. Kicking Football....	168 ft. 5½ in....	Mathewson																						
2. Throwing Cricket Ball	341 ft. 5 in.....	Robertson																						
3. 16 lb. Shot	35 ft. 9 in	McDougall																						
4. 56 lb. Weight.....	22 ft. 7½ in.....	Brown																						
5. 16 lb. Hammer	94 ft. 3 in.....	McLennan																						
6. Running Broad Jump	20 ft. 11 in.....	Campbell																						
7. Running High Jump	5 ft. 6¼ in.....	Killaly																						
8. Pole Leap.....	9 ft. 9¼ in.....	Milburn																						
9. 1 Mile Bicycle.....	2 min. 36 2-5 sec....	Coussirat																						
10. 3 Mile Bicycle.....	8 min. 6 2-5 sec.	J. H. Boulter																						
11. 1 Mile Run.....	4 min. 40 3-5 sec....	Brodie																						
12. Half-Mile Run	2 min. 2 3-5.....	Barber																						
13. M. A. A. A. 440 yds.	52 2-5 sec....	J. D. Morrow																						
14. 220 yds. Run.....	22 3-5 sec....	J. D. Morrow																						
15. 100 yds. Run.....	10 2-5 sec.	Kennedy Campbell Molson																						
16. 120 yds. Hurdle.....	18 2-5 sec.	Todd Van Horne																						
17. 1 Mile Walk	8 min. 8 2-5 sec....	Robins																						
18. Sack Race (100 yds)..	17 sec.....	Baker																						
19. Running Hop, Step and Jump.....	43 ft. 3¼ in..	C. A. Rutherford																						
20. Half-Mile Bicycle....	1 min. 12 1-5 sec..	J. H. Boulter																						
21. Faculty Team Race..																						
22. Throwing Discus....	102 ft. ¾ in.....	Fraser																						

FIELD DAY.

- RD.
- .. Mathewson
 - .. Robertson
 - .. McDougall
 - Brown
 - .. McLennan
 - .. Campbell
 - Killaly
 - Milburn
 - .. Coussirat
 - J.H. Boulter
 - Brodie
 - Barber
 - .. D. Morrow
 - D. Morrow
 - Kennedy
 - Campbell
 - Molson
 - Todd
 - Van Horne
 - Robins
 - Baker
 - Rutherford
 - .. H. Boulter
 - Fraser

	WINNER.	SCORE 1900-01
1.		
2.		
3.		
4.		
5.		
6.		
7.		
8.		
9.		
10.		
11.		
12.		
13.		
14.		
15.		
16.		
17.		
18.		
19.		
20.		
21.		
22.		

INTERCOLLEGIATE

EVENTS.	RECORD.
1. 100 yds. run.....	10 2-5 sec.....Morrow, McGill
2. Half-mile run.....	8 5 1-2 sec.....Percy, "
3. Broad jump.....	20 ft. 5 1-2 in. Rutherford, "
4. 16 lb. Hammer....	88 ft. 10 1-2 in.. Biggs, 'Varsity
5. 220 yds. run.....	22 4-5 sec.....Morrow, McGill
6. 16 lb. shot.....	35 ft Gibson, 'Varsity
7. High jump.....	5 ft. 4 in...Rutherford, McGill
8. 440 yds. run.....	51 sec.....Morrow, "
9. 120 yds. Hurdle ...	18 secTodd, "
10. Throwing Discus..	97 ft. 11 in.... Biggs, 'Varsity
11. Pole vault..... Solandt, Queen's
12. Team race	3 36 sec..... McGill

GIATE

SPORTS.

RD.

rrow, McGill
 Percy, "
 ertford, "
 iggs, 'Varsity
 rrow, McGill
 onson, 'Varsity
 ertford, McGill
 rrow, "
 Todd, "
 ggs, 'Varsity
 ndt, Queen's
 McGill

	WINNER.	SCORE 1900-01.
1.
2.
3.
4.
5.
6.
7.
8.
9.
10.
11.
12.

SCHEDULE OF FOOT-

DATE.	TEAMS.
SENIOR SERIES.	
October 13th	Varsity vs. McGill.....
" 20th	McGill vs. Queens.....
" 27th	Queens vs. Varsity.....
November 3rd	Varsity vs. Queens.....
" 10th	Queens vs. McGill.....
" 17th	McGill vs. Varsity.....

BA

Inter

McG

Quee

Varsi

Queer

McGi

Varsit

FOOT-

BALL MATCHES 1900.

AT	WON BY:	SCORE
<i>Intercollegiate</i>		
McGill.....		
Queens.....		
Varsity.....		
Queens.....		
McGill.....		
Varsity.....		

SCHEDULE OF FOOTBALL MEETINGS
Personal Hygiene.

R. TAIT MCKENZIE, B.A., M.D.

Every man on coming to McGill should undertake a regular course of exercise. If likely to take part in Athletics or Football, get your measurements and certificate from the Director as soon as possible after entering college and thus save trouble and delay later on. (See regulations in Calendar.) To many, Football and Hockey have certain disadvantages which prevent them from being followed systematically enough to do any good. To such men we would specially recommend regular work in the gymnasium (19 University street). The class meets three times a week at 5 p.m., and the work is so arranged that three-quarters of an hour at least of vigorous all-round work can be had without the risk of over-exertion.

The best way to get a new gymnasium on the College grounds is to show that the old one is appreciated.

Make the gymnasium hour fill a place on your time-table like any lecture and you will find it an hour gained.

Don't be afraid to make the Director your confidante in all matters pertaining to your physical life. He can help you in many difficulties and will always be found glad to do so.

Be regular in your attendance that you may graduate a better man physically, as well as morally and intellectually, than when you entered college life.

THE
THE
THE
THE
ROYA
THE
S
a
P
THE
S
THE
th
FREE
CHATI
VICTO
NOTRE
(R
CHRIS
ST. JAI
CITY H
MT. R

A few Places of Interest.

THE YOUNG MEN'S CHRISTIAN ASSOCIATION OF THE CITY OF MONTREAL, Dominion Square, is one of the sights of the city. Students are invited to visit it and to make use of its well-equipped reading-room.

THE ABATTOIRS at Cote St. Paul and at Hochelaga.

THE PRINTING OFFICES of the large daily papers. The best time to visit is about 4.30 p.m., when the last edition is being printed off.

THE ART GALLERY, Phillips Square.— Admission 25 cents. Saturday afternoon, free, except during special exhibitions.

ROYAL VICTORIA HOSPITAL at the head of University Street.

THE NATURAL HISTORY SOCIETY MUSEUM, corner University and Cathcart Streets.— Students may obtain tickets free of charge, admitting them to the Museum, from the Professor of Botany.

THE MONTREAL WATER WORKS, at Point St. Charles.

THE UNIVERSITY BOTANICAL GARDENS, at the top of Cote des Neiges Hill.

FREE PUBLIC LIBRARY (Fraser Institute).

CHATEAU DE RAMEZAY, opposite the City Hall.

VICTORIA JUBILEE BRIDGE.

NOTRE DAME AND ST. JAMES CATHEDRALS (Roman Catholic.)

CHRIST CHURCH CATHEDRAL (Anglican).

ST. JAMES METHODIST CHURCH.

CITY HALL AND COURT HOUSE.

MT. ROYAL PARK AND CEMETERIES.

Information.

Postal Rates.

LETTERS for the city of Montreal, Canada and United States, 2 cents per oz.

Great Britain and Ireland and British Dependencies in postal union, 2 cents per half oz. All other destinations 5 cents per half oz.

NEWSPAPERS.—Newfoundland and U.S., 1 cent per 4 oz. Great Britain, 1 cent per 2 oz.

PHOTOGRAPHS.—For Canada and the U.S. and all other countries, 1c. for 2 oz.

BOOK POST.—Canada and Newfoundland, 1 cent per 4 oz., U.S. and Britain, 1 cent per 2 oz. Limit, 5 lbs.

REGISTRATION.—Five cents in addition to ordinary postage.

PARCEL POST.—Canada, 1 cent per oz; limit, 5 lbs.

United Kingdom—20 cents for the first lb. 16 cents each additional lb.; limit, 11 lbs.

Japan—25 cents per lb., limit, 5 lbs.

Newfoundland—15 cents per lb; limit, 7 lb. Other places vary in rates.

5th class matter in Canada, 1 cent per oz.

SAMPLE POST.—Canada—1 cent per 4 oz; limit, 24 oz.

United States—1 cent per 2 oz; limit, 8 oz.

United Kingdom—1 cent per 2 oz.; limit, 2 lbs. (Minimum prepayment for U.S. and U.K., 2 cents.)

Not e:
"
"
"
"
"

Ha
Coun
and C
Un.
obtain
The
James

It is
these
those
States
\$3.00 ar
3.00 to
5.00 "
10.00 "
20.00 "

WINDS
St. LA
BALMC
QUEEN
Ja
TURKI

Ca
One H
15
the
eve
per
for
anc

Post Office Money Orders.

CANADA.	FOREIGN.
Not exceeding \$4.00, 2c.	Not exceeding \$10.00, 10c.
" " 10.00, 5c.	" " 20.00, 20c.
" " 20.00, 10c.	" " 30.00, 30c.
" " 40.00, 20c.	" " 40.00, 40c.
" " 60.00, 30c.	" " 50.00, 50c.
" " 80.00, 40c.	
" " 100.00, 50c.	

Have your P.O. order drawn on City Councillor Branch P.O., Corner Sherbrooke and City Councillor Streets.

United States postage stamps may be obtained at the *Star* and *Witness* offices.

The Montreal Post Office is situated on St. James Street, in the heart of the city.

Express Money Orders.

It is sometimes more convenient to remit by these than by P.O. Orders. The rates for those payable in Canada and in the United States are as follows :

\$3.00 and under.....3c.	\$30.00 to \$40.00.....15c.
3.00 to \$5.00.....4c.	40.00 " 50.00.....18c.
5.00 " 10.00.....6c.	50.00 " 60.00.....20c.
10.00 " 20.00.....10c.	60.00 " 75.00.....25c.
20.00 " 30.00.....12c.	75.00 " 100.00.....30c.

Hotels.

WINDSOR HOTEL.—Dominion Square.

ST. LAWRENCE HALL.—139 St. James St.

BALMORAL HOTEL.—1892 Notre Dame St.

QUEEN'S HOTEL.—Corner Windsor and St. James Street.

TURKISH BATH HOTEL.—St. Monique St.

Tariff for Hackney Carriages.

One Horse Vehicles.—One or two persons, 15 minutes, 25 cents; 30 minutes, 40 cents; the first hour, 75 cents; and 60 cents for every subsequent hour. Three or four persons, 40 cents for 15 minutes; 60 cents for 30 minutes, \$1.00 for the first hour, and 75 cents for every subsequent hour.

Post Office
Churches.

Situated in Central Portion of the City.

PRESBYTERIAN.

- CHALMERS'—Rev. G. C. Heine.
- CRESCENT ST.—Rev. Dr. McKay.
- KNOX—Rev. Jas. Fleck.
- ST. GABRIEL—Rev. Dr. Campbell.
- ST. PAUL'S—Rev. Dr. Barclay.
- STANLEY ST.—Rev. F. M. Dewey.
- ERSKINE—Rev. A. J. Mowatt.
- AMERICAN—Rev. T. S. McWilliams.

CHURCH OF SCOTLAND.

- ST. ANDREW'S—Rev. J. Edgar Hill.

CHURCH OF ENGLAND.

- CHRIST CHURCH CATHEDRAL—Rev. Canon Norton.
- ST. GEORGE'S—Very Rev. Dean Carmichael.
- ST. JAMES THE APOSTLE—Rev. Canon Ellegood.
- ST. JOHN THE EVANGELIST—Rev. Canon Wood.
- ST. MARTIN'S—Rev. G. O. Troop.

METHODIST.

- ST. JAMES—Rev. Dr. Williams, Rev. Wm. Sparling.
- DOMINION SQUARE—Rev. T. J. Mansell.
- DOUGLAS—Rev. W. Kerby.
- SHERBROOKE—Rev. P. L. Richardson.
- MOUNTAIN ST.—Rev. Dr. Jackson.

REFORMED EPISCOPAL.

- ST. BARTHOLOMEW'S—Beaver Hall Hill, Rev. C. R. Cook.

CA
EM
ZIC

FI
OL

ST.
at
NO
CH

ST.

MER

BAN

MOL

BANI

BANF

BANF

BANQ

MERC

E

CONGREGATIONAL.

CALVARY—Rev. E. M. Hill.
EMMANUEL—Rev. H. Pedley, B.A.
ZION—Rev. A. Murrman.

BAPTIST.

FIRST—Rev. J. A. Gordon.
OLIVET—

ROMAN CATHOLIC.

ST. JAMES CATHEDRAL—Corner Cathedral
and Dorchester, Rev. F. L. Colin, Superior.
NOTRE DAME CHURCH—Curé, Rev. Sentenne
CHURCH OF THE JESU—Jesuit—Rev. F. X.
Renaud, Superior Rector, Rev. Hyacinth
Hudson.
ST. PATRICK'S—Rev. Father Quinlivan.

Banks.

MERCHANTS' BANK OF CANADA—St. James
St., Cor. St. Peter. Branch, St. Catherine
St., opposite English Cathedral.
BANK OF MONTREAL—Place d'Armes Square.
West End Branch, St. Catherine Street,
Cor. Mansfield.
MOLSON'S BANK—St. James Street, Corner
St. Peter. West End Branch, St. Catherine
Street.
BANK OF TORONTO—St. James Street, Cor.
of Mc Gill Street.
BANK OF BRITISH NORTH AMERICA—140
St. James Street.
BANK OF NOVA SCOTIA—130 St. James St.
BANQUE D'HOCHELAGA—107 St. James St.
MERCHANTS' BANK OF HALIFAX—West
End Branch, St. Catherine St.

DATE BOOK.—SEPTEMBER.

1. BARRINGTON—Rev. H. F. Kelly, D.D.
2. BARRINGTON—Rev. H. F. Kelly, D.D.
3. BARRINGTON—Rev. H. F. Kelly, D.D.
4. BARRINGTON—Rev. H. F. Kelly, D.D.
5. BARRINGTON—Rev. H. F. Kelly, D.D.
6. BARRINGTON—Rev. H. F. Kelly, D.D.
7. BARRINGTON—Rev. H. F. Kelly, D.D.
8. BARRINGTON—Rev. H. F. Kelly, D.D.
9. BARRINGTON—Rev. H. F. Kelly, D.D.
10. BARRINGTON—Rev. H. F. Kelly, D.D.
11. BARRINGTON—Rev. H. F. Kelly, D.D.
12. BARRINGTON—Rev. H. F. Kelly, D.D.
13. BARRINGTON—Rev. H. F. Kelly, D.D.
14. BARRINGTON—Rev. H. F. Kelly, D.D.
15. BARRINGTON—Rev. H. F. Kelly, D.D.
16. BARRINGTON—Rev. H. F. Kelly, D.D.
17. BARRINGTON—Rev. H. F. Kelly, D.D.
18. BARRINGTON—Rev. H. F. Kelly, D.D.
19. BARRINGTON—Rev. H. F. Kelly, D.D.
20. BARRINGTON—Rev. H. F. Kelly, D.D.
21. BARRINGTON—Rev. H. F. Kelly, D.D.
22. BARRINGTON—Rev. H. F. Kelly, D.D.
23. BARRINGTON—Rev. H. F. Kelly, D.D.
24. BARRINGTON—Rev. H. F. Kelly, D.D.
25. BARRINGTON—Rev. H. F. Kelly, D.D.
26. BARRINGTON—Rev. H. F. Kelly, D.D.
27. BARRINGTON—Rev. H. F. Kelly, D.D.
28. BARRINGTON—Rev. H. F. Kelly, D.D.
29. BARRINGTON—Rev. H. F. Kelly, D.D.
30. BARRINGTON—Rev. H. F. Kelly, D.D.

ER.

CASH ACCOUNT—SEPTEMBER.

	REC'D.		PAID.	
				1
				2
				3
				4
				5
				6
				7
				8
				9
				10
				11
				12
				13
				14
				15
				16
				17
				18
				19
				20
				21
				22
				23
				24
				25
				26
				27
				28
				29
				30
				31

DATE BOOK—OCTOBER.

1. THUR

2.

3.

4.

5.

6.

7.

8.

9.

10.

11.

12.

13.

14.

15.

16.

17.

18.

19.

20.

21.

22.

23.

24.

25.

26.

27.

28.

29.

30.

31.

DATE BOOK—NOVEMBER.

- | 1. Day | Month | Year |
|--------|-------|------|
| 2. | | |
| 3. | | |
| 4. | | |
| 5. | | |
| 6. | | |
| 7. | | |
| 8. | | |
| 9. | | |
| 10. | | |
| 11. | | |
| 12. | | |
| 13. | | |
| 14. | | |
| 15. | | |
| 16. | | |
| 17. | | |
| 18. | | |
| 19. | | |
| 20. | | |
| 21. | | |
| 22. | | |
| 23. | | |
| 24. | | |
| 25. | | |
| 26. | | |
| 27. | | |
| 28. | | |
| 29. | | |
| 30. | | |

BER.

CASH ACCOUNT—NOVEMBER.

REC'D.		PAID
		6
		7
		8
		9
		10
		11
		12
		13
		14
		15
		16
		17
		18
		19
		20
		21
		22
		23
		24
		25
		26
		27
		28
		29
		30
		31

DATE BOOK—DECEMBER.

- | 1. | 2. | 3. | 4. | 5. | 6. | 7. | 8. | 9. | 10. | 11. | 12. | 13. | 14. | 15. | 16. | 17. | 18. | 19. | 20. | 21. | 22. | 23. | 24. | 25. | 26. | 27. | 28. | 29. | 30. | 31. |
|----|----|----|----|----|----|----|----|----|-----|-----|-----|-----|-----|-----|-----|-----|-----|-----|-----|-----|-----|-----|-----|-----|-----|-----|-----|-----|-----|-----|
| | | | | | | | | | | | | | | | | | | | | | | | | | | | | | | |

DATE BOOK—JANUARY.

DATE	DESCRIPTION
2.	
3.	
4.	
5.	
6.	
7.	
8.	
9.	
10.	
11.	
12.	
13.	
14.	
15.	
16.	
17.	
18.	
19.	
20.	
21.	
22.	
23.	
24.	
25.	
26.	
27.	
28.	
29.	
30.	
31.	

RY.

CASH ACCOUNT—JANUARY.

		REC'D.	PAID.
			1
			4
			2
			0
			7
			2
			2
			01
			11
			21
			11
			11
			21
			01
			71
			81
			01
			02
			12
			22
			22
			12
			22
			22
			72
			22

DATE BOOK—FEBRUARY.

1.	2.	3.	4.	5.	6.	7.	8.	9.	10.	11.	12.	13.	14.	15.	16.	17.	18.	19.	20.	21.	22.	23.	24.	25.	26.	27.	28.

RUARY.)

CASH ACCOUNT—FEBRUARY.

	REC'D.		PAID.	
				1
				2
				3
				4
				5
				6
				7
				8
				9
				10
				11
				12
				13
				14
				15
				16
				17
				18
				19
				20
				21
				22
				23
				24
				25
				26
				27
				28
				29
				30
				31

DATE BOOK—MARCH.

- | | | |
|-----|--|--|
| 1. | | |
| 2. | | |
| 3. | | |
| 4. | | |
| 5. | | |
| 6. | | |
| 7. | | |
| 8. | | |
| 9. | | |
| 10. | | |
| 11. | | |
| 12. | | |
| 13. | | |
| 14. | | |
| 15. | | |
| 16. | | |
| 17. | | |
| 18. | | |
| 19. | | |
| 20. | | |
| 21. | | |
| 22. | | |
| 23. | | |
| 24. | | |
| 25. | | |
| 26. | | |
| 27. | | |
| 28. | | |
| 29. | | |
| 30. | | |
| 31. | | |

RCH. PAID

CASH ACCOUNT—MARCH.

REC'D.		PAID	
			1
			2
			3
			4
			5
			6
			7
			8
			9
			01
			11
			21
			31
			41
			51
			61
			71
			81
			91
			02
			12
			22
			32
			42
			52
			62
			72
			82
			92
			03

DATE BOOK—APRIL

- 1.
- 2.
- 3.
- 4.
- 5.
- 6.
- 7.
- 8.
- 9.
- 10.
- 11.
- 12.
- 13.
- 14.
- 15.
- 16.
- 17.
- 18.
- 19.
- 20.
- 21.
- 22.
- 23.
- 24.
- 25.
- 26.
- 27.
- 28.
- 29.
- 30.

L.

CASH ACCOUNT—APRIL.

	REC'D.	PAID.
		0
		1
		2
		3
		4
		5
		6
		7
		8
		9
		10
		11
		12
		13
		14
		15
		16
		17
		18
		19
		20
		21
		22
		23
		24
		25
		26
		27
		28
		29
		30
		31

DATE BOOK—MAY.

- 1.
- 2.
- 3.
- 4.
- 5.
- 6.
- 7.
- 8.
- 9.
- 10.
- 11.
- 12.
- 13.
- 14.
- 15.
- 16.
- 17.
- 18.
- 19.
- 20.
- 21.
- 22.
- 23.
- 24.
- 25.
- 26.
- 27.
- 28.
- 29.
- 30.
- 31.

Y.

CASH ACCOUNT—MAY.

REC'D.		PAID.
		1
		2
		3
		4
		5
		6
		7
		8
		9
		10
		11
		12
		13
		14
		15
		16
		17
		18
		19
		20
		21
		22
		23
		24
		25
		26
		27
		28
		29
		30
		31

DATE BOOK.—JUNE.

- | 1. | 2. | 3. | 4. | 5. | 6. | 7. | 8. | 9. | 10. | 11. | 12. | 13. | 14. | 15. | 16. | 17. | 18. | 19. | 20. | 21. | 22. | 23. | 24. | 25. | 26. | 27. | 28. | 29. | 30. |
|----|----|----|----|----|----|----|----|----|-----|-----|-----|-----|-----|-----|-----|-----|-----|-----|-----|-----|-----|-----|-----|-----|-----|-----|-----|-----|-----|
| | | | | | | | | | | | | | | | | | | | | | | | | | | | | | |

E. 3

CASH ACCOUNT—JUNE.

	REC'D.		PAID.	
				1
				2
				3
				4
				5
				6
				7
				8
				9
				10
				11
				12
				13
				14
				15
				16
				17
				18
				19
				20
				21
				22
				23
				24
				25
				26
				27
				28
				29
				30
				31

DATE BOOK—JULY.

- 1.
- 2.
- 3.
- 4.
- 5.
- 6.
- 7.
- 8.
- 9.
- 10.
- 11.
- 12.
- 13.
- 14.
- 15.
- 16.
- 17.
- 18.
- 19.
- 20.
- 21.
- 22.
- 23.
- 24.
- 25.
- 26.
- 27.
- 28.
- 29.
- 30.
- 31.

CASH ACCOUNT—JULY.

	REC'D.		PAID.	
				1
				2
				3
				4
				5
				6
				7
				8
				9
				10
				11
				12
				13
				14
				15
				16
				17
				18
				19
				20
				21
				22
				23
				24
				25
				26
				27
				28
				29
				30
				31

DATE BOOK—AUGUST.

- 1.
- 2.
- 3.
- 4.
- 5.
- 6.
- 7.
- 8.
- 9.
- 10.
- 11.
- 12.
- 13.
- 14.
- 15.
- 16.
- 17.
- 18.
- 19.
- 20.
- 21.
- 22.
- 23.
- 24.
- 25.
- 26.
- 27.
- 28.
- 29.
- 30.
- 31.

UST.

CASH ACCOUNT—AUGUST.

	REC'D.	PAID.
Aug 1		
Aug 2		
Aug 3		
Aug 4		
Aug 5		
Aug 6		
Aug 7		
Aug 8		
Aug 9		
Aug 10		
Aug 11		
Aug 12		
Aug 13		
Aug 14		
Aug 15		
Aug 16		
Aug 17		
Aug 18		
Aug 19		
Aug 20		
Aug 21		
Aug 22		
Aug 23		
Aug 24		
Aug 25		
Aug 26		
Aug 27		
Aug 28		
Aug 29		
Aug 30		
Aug 31		

CONTENTS

	PAGE.
Y. M. C. A. Hall.....	2
College Colors.....	3
Calendar.....	4
Time-Table (Fall Term).....	5
" (Winter ").....	6
" (Spring ").....	7
Greeting.....	8
Principal Peterson (Portrait).....	9
Introductory.....	10
Pointers.....	13
McGill University—Data.....	16
Portrait J. R. Cox, M.D., Gen. Sec.....	18
University Societies:—	
McGill Y. M. C. A.....	19
Y. W. C. A.....	21
Canadian Colleges Mission.....	22
Undergraduates Literary Society.....	22
Delta Sigma Society.....	23
McGill Medical Society.....	23
" Mining Society.....	24
Applied Science Society.....	25
Veterinary Medical Association.....	25
Historical Society.....	25
College Publications.....	26
Athletics.....	27
Rugby Football Club.....	27
McGill University Cricket Club.....	28
University Lawn Tennis Club.....	28
" Skating Club.....	29
McGill Hockey Club.....	29
Intercollegiate Athletic Association.....	30
Field Day.....	32-33
Intercollegiate Sports.....	34-35
Football Schedules.....	36-37
Personal Hygiene.....	38
Places of Interest.....	39
Information.....	40
Postal Rates.....	40
Post-Office Money Orders.....	41
Express Money Orders.....	41
Hotels.....	41
Tariff for Hackney Carriage.....	41
Churches.....	42
Banks.....	43
Date Book and Cash Account.....	44-67
Our Advertisers.....	69-78



I

who
in, th
publ
who
been
confi
patro
It i
be m
purch



PAGE.

.....	2
.....	3
.....	4
.....	5
.....	6
.....	7
.....	8
.....	9
.....	10
.....	13
.....	16
.....	18
.....	19
.....	21
.....	22
.....	22
.....	23
.....	23
.....	24
.....	25
.....	25
.....	25
.....	26
.....	27
.....	27
.....	28
.....	28
.....	29
.....	29
.....	30
.....	32-33
.....	34-35
.....	36-37
.....	38
.....	39
.....	40
.....	40
.....	41
.....	41
.....	41
.....	41
.....	42
.....	43
.....	44-67
.....	69-78



Our Advertisers



IT is largely due to the generous assistance of the merchants whose advertisements appear herein, that the Association is able to publish the Handbook. Those only who are thoroughly reliable have been admitted, and they are confidently recommended to the patronage of the Students.

It is specially asked that mention be made of this publication when purchasing.



McGILL STUDENTS . . .

My Pharmacy is close to the College and is well supplied with Drugs and Toilet Articles. I shall be pleased to have a share of your custom.

T. H. ROBINSON,

736 Sherbrooke St.

Night Bell.

Phone Up 94

R. F. SMITH

MONTREAL PHOTOGRAPHIC SUPPLY

1756 NOTRE DAME STREET

Uptown Branch, 148 PEEL STREET

Kodaks to Rent, for Sale and Exchange.

Developing and Printing

Send for Bargain List.

Alexander's Café
2358 St. Catherine St.



If you want a first class meal for 25c., this is the place to go for it: : : : :
Special rates for students

JOHN F. ALEXANDER.

J. Ettenberg & Co.

FASHIONABLE TAILORS.

2098 ST. CATHERINE ST.

HIGH-CLASS FOREIGN

DOMESTIC GOODS:::::



Special Price
for Students

Pressing for Students
Free of Charge.

A. J. RICE,

Phone Up
2472

...PHOTOGRAPHER



2261 ST. CATHERINE ST.

MONTREAL.

BIG
HATS
FOR **CAPS** and
FURS

Go to . . .

HASLEY BROS.,
2252 St. Catherine St.

*Usual discounts
to Students*

Telephone Up 1375.

Club
Shoes

STYLE, FIT and
FINISH

\$3.00 AND \$4.00

Club Shoe Co.

ST. CATHERINE STREET

Opposite Victoria Street.

hea
ma

M
S
Our sto
WEA
L
WE AI

Ma

see "1

2
MUNROE

3

**Headquarters for
McGill Students**



IN ...

**Gentlemen's
Furnishings and
Haberdashery**

AND ALL REGULATION

**McGILL JERSEYS, SWEATERS
STOCKINGS, RIBBON, Etc.**

Our stock of SHIRTS, COLLARS, TIES, UNDER-WEAR and everything in the FURNISHING LINE is the most up-to-date and fashionable in the City.

"WE AIM TO PLEASE"

Mackerrow Bros.

THE STUDENTS FURNISHERS

2246 ST. CATHERINE ST

MUNROE BROS. OLD STAND OPP. VICTORIA ST.

BEAU'S
ARCADE CAFÉ

2336 St. Catherine Street

Near Mansfield St. Next door to Bank of Montreal

The finest place to meet the
Students of McGill, and the
only Café up-town where you
can get a first-class meal for 25c.

SPECIAL PRICE FOR STUDENTS

When any of the . . .

**Professors or Students
of the McGill College**

Want any Fine

Chocolates and Bonbons

SCOTT'S IS THE PLACE

Our SODAS and ICES are second to none in town
Also headquarters for FINE CAKES.

ALEXANDER SCOTT

2471 St. Catherine St.

PHONE UP 1228

COR. MOUNTAIN.

LATES

3

BT

G.

Job

POPUL
WIT
STUDI

Always
Ti

JOE

CAFÉ

Street

Bank of Montreal

Get the
and the
re you
or 25c.

STUDENTS

bonbons

LACE

none in town
CAKES.

OTT

R. MOUNTAIN.

LATEST STYLES

LOWEST PRICES

Buy Your

Boots, Shoes
Slippers
and Rubbers

...AT...

G. H. FEATHERSTON

2371 St. Catherine Street
Between Metcalfe & Peel Sts.

John Murphy & Co.

POPULAR
WITH THE
STUDENTS

Men's Furnishing
Department

HIGH-CLASS GOODS
AT LOW PRICES

Always in stock, the latest in SHIRTS, COLLARS
TIES, HOSIERY, UNDERWEAR, UM-
BRELLAS, BRACES, ETC.

JOHN MURPHY & CO.

2343 ST. CATHERINE STREET

COR. METCALFE ST.

P. O. BOX 397

BELL TELEPHONE
MAIN 245

Ruling Printing
Book Binding
Relief Stamping
Mercantile Stationery
Importing Exporting
and Manufacturing

Joseph Fortier

MANUFACTURING
STATIONER AND
BLANK BOOK
MAKER

254 St. James St. MONTREAL.

THE BRYCE COPYGRAPH PRINTER

One of the most
reliable and sub-
stantial Copying
Apparatus ever::
made :: :: ::



PATENT PENDING
Legal Size, 9x13 \$6.00 Larger Sizes to Order

BRYCE & DOUGLAS

MANUFACTURERS OF

THE BRYCE COPYGRAPH PRINTER

Dealers in TYPEWRITERS
& TYPEWRITER SUPPLIES

TELEPHONE MAIN 9214 11 BLEURY STREET
MONTREAL.

TELEPHONE
MAIN 245

Montier

MONTREAL.

of the most
able and sub-
stantial Copying
apparatus ever:
e :: :: ::

STUDENTS



to Order
AS

PRINTER
JOHN
RY STREET

STUDENTS OF MONTREAL

DEPARTMENT OF

College Text Books

Notes Books

Mountain Pass and

General Aids

PATERSON & FOSTER.

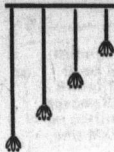
Surgical Instruments.

ART ASSOCIATION B'L'G.
21 PHILLIPS SQUARE MONTREAL.

All the goods are sold
to students at close
figures. Write for
Prices of Books Requested

333 ST. CATHERINE

THE STUDENTS OF MCGILL



**WILL FIND THE FULLEST
ASSORTMENT OF**

**College Text Books
Note Books
Fountain Pens and
General Aids**



..AT..

Wm. Foster Brown

Successor to DAWSON BROTHERS.

**All my Goods are Sold
to Students at close
Figures. Write for
Prices of Books Required**



2323 ST. CATHERINE,
Corner Mansfield.

OF MCGILL

FIND THE FULLEST
DEPARTMENT OF

Text Books
Books
in Pens and
Aids

Brown

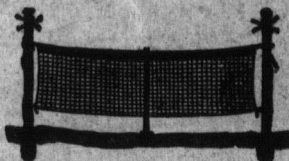
OTHERS.

Sold
close
for
required

RINE,

WRIGHT & DITSON'S

|| Fine Lawn Tennis
and Golf Goods ||



Wright and Ditson's Lawn Tennis Balls,
Championship, Club, Squash.

Wright & Ditson's Lawn Tennis Racquets,
Pim, Campbell, Sears, Champion, Long-
wood, Park, Hub, Surprise, Star.

Wright & Ditson's Golf Balls, Selected, Silver-
town, Varsity, Practice, Agrippa, Eureka,

Wright & Ditson's Selected Wood and Iron
Golf Clubs.

Wright & Ditson's Tennis Nets, Poles, Canvas
Straps, Marking Plates, Golf Caddy Bags,
Direction Flags, Teeing Plates, etc.

SPECIAL PRICES TO

Clubs, Members of Clubs, and
Members of the McGill University

WHOLESALE AGENTS :

LEEMING, MILES & Co.

53 St. Salpice St., MONTREAL.