

**CIHM
Microfiche
Series
(Monographs)**

**ICMH
Collection de
microfiches
(monographies)**



Canadian Institute for Historical Microreproductions / Institut canadien de microreproductions historiques

© 1994

Technical and Bibliographic Notes / Notes techniques et bibliographiques

The Institute has attempted to obtain the best original copy available for filming. Features of this copy which may be bibliographically unique, which may alter any of the images in the reproduction, or which may significantly change the usual method of filming, are checked below.

L'Institut a microfilmé le meilleur exemplaire qu'il lui a été possible de se procurer. Les détails de cet exemplaire qui sont peut-être uniques du point de vue bibliographique, qui peuvent modifier une image reproduite, ou qui peuvent exiger une modification dans la méthode normale de filmage sont indiqués ci-dessous.

Coloured covers/
Couverture de couleur

Covers damaged/
Couverture endommagée

Covers restored and/or laminated/
Couverture restaurée et/ou pelliculée

Cover title missing/
Le titre de couverture manque

Coloured maps/
Cartes géographiques en couleur

Coloured ink (i.e. other than blue or black)/
Encre de couleur (i.e. autre que bleue ou noire)

Coloured plates and/or illustrations/
Planches et/ou illustrations en couleur

Bound with other material/
Relié avec d'autres documents

Tight binding may cause shadows or distortion along interior margin/
La reliure serrée peut causer de l'ombre ou de la distorsion le long de la marge intérieure

Blank leaves added during restoration may appear within the text. Whenever possible, these have been omitted from filming/
Il se peut que certaines pages blanches ajoutées lors d'une restauration apparaissent dans le texte, mais, lorsque cela était possible, ces pages n'ont pas été filmées.

Additional comments: / Some pages are cut off.
Commentaires supplémentaires:

Coloured pages/
Pages de couleur

Pages damaged/
Pages endommagées

Pages restored and/or laminated/
Pages restaurées et/ou pelliculées

Pages discoloured, stained or foxed/
Pages décolorées, tachetées ou piquées

Pages detached/
Pages détachées

Showthrough/
Transparence

Quality of print varies/
Qualité inégale de l'impression

Continuous pagination/
Pagination continue

Includes index(es)/
Comprend un (des) index

Title on header taken from: /
Le titre de l'en-tête provient:

Title page of issue/
Page de titre de la livraison

Caption of issue/
Titre de départ de la livraison

Masthead/
Générique (périodiques) de la livraison

This item is filmed at the reduction ratio checked below/
Ce document est filmé au taux de réduction indiqué ci-dessous.

10X	12X	14X	16X	18X	20X	22X	24X	26X	28X	30X	32X
<input type="checkbox"/>	<input type="checkbox"/>	<input type="checkbox"/>	<input type="checkbox"/>	<input type="checkbox"/>	<input type="checkbox"/>	<input type="checkbox"/>	<input checked="" type="checkbox"/>	<input type="checkbox"/>	<input type="checkbox"/>	<input type="checkbox"/>	<input type="checkbox"/>

The copy filmed here has been reproduced thanks to the generosity of:

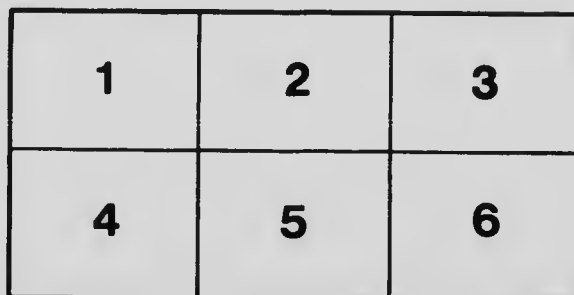
National Library of Canada

The images appearing here are the best quality possible considering the condition and legibility of the original copy and in keeping with the filming contract specifications.

Original copies in printed paper covers are filmed beginning with the front cover and ending on the last page with a printed or illustrated impression, or the back cover when appropriate. All other original copies are filmed beginning on the first page with a printed or illustrated impression, and ending on the last page with a printed or illustrated impression.

The last recorded frame on each microfiche shall contain the symbol \rightarrow (meaning "CONTINUED"), or the symbol ∇ (meaning "END"), whichever applies.

Maps, plates, charts, etc., may be filmed at different reduction ratios. Those too large to be entirely included in one exposure are filmed beginning in the upper left hand corner, left to right and top to bottom, as many frames as required. The following diagrams illustrate the method:



L'exemplaire filmé fut reproduit grâce à la générosité de:

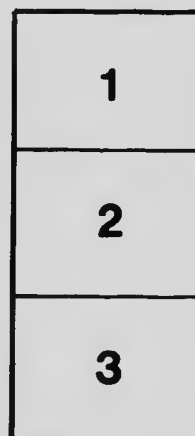
Bibliothèque nationale du Canada

Les images suivantes ont été reproduites avec le plus grand soin, compte tenu de la condition et de la netteté de l'exemplaire filmé, et en conformité avec les conditions du contrat de filmage.

Les exemplaires originaux dont la couverture en papier est imprimée sont filmés en commençant par le premier plat et en terminant soit par la dernière page qui comporte une empreinte d'impression ou d'illustration, soit par le second plat, selon le cas. Tous les autres exemplaires originaux sont filmés en commençant par la première page qui comporte une empreinte d'impression ou d'illustration et en terminant par la dernière page qui comporte une telle empreinte.

Un des symboles suivants apparaîtra sur la dernière image de chaque microfiche, selon le cas: le symbole \rightarrow signifie "A SUIVRE", le symbole ∇ signifie "FIN".

Les cartes, planches, tableaux, etc., peuvent être filmés à des taux de réduction différents. Lorsque le document est trop grand pour être reproduit en un seul cliché, il est filmé à partir de l'angle supérieur gauche, de gauche à droite, et de haut en bas, en prenant le nombre d'images nécessaire. Les diagrammes suivants illustrent la méthode.



MICROCOPY RESOLUTION TEST CHART

(ANSI and ISO TEST CHART No. 2)



1.50

1.56

1.63

1.71

1.80

1.88

2.00

2.11

2.25

2.35

2.50

2.63

2.80

3.00

3.15

3.38

3.60

3.80

4.00

4.25

4.50

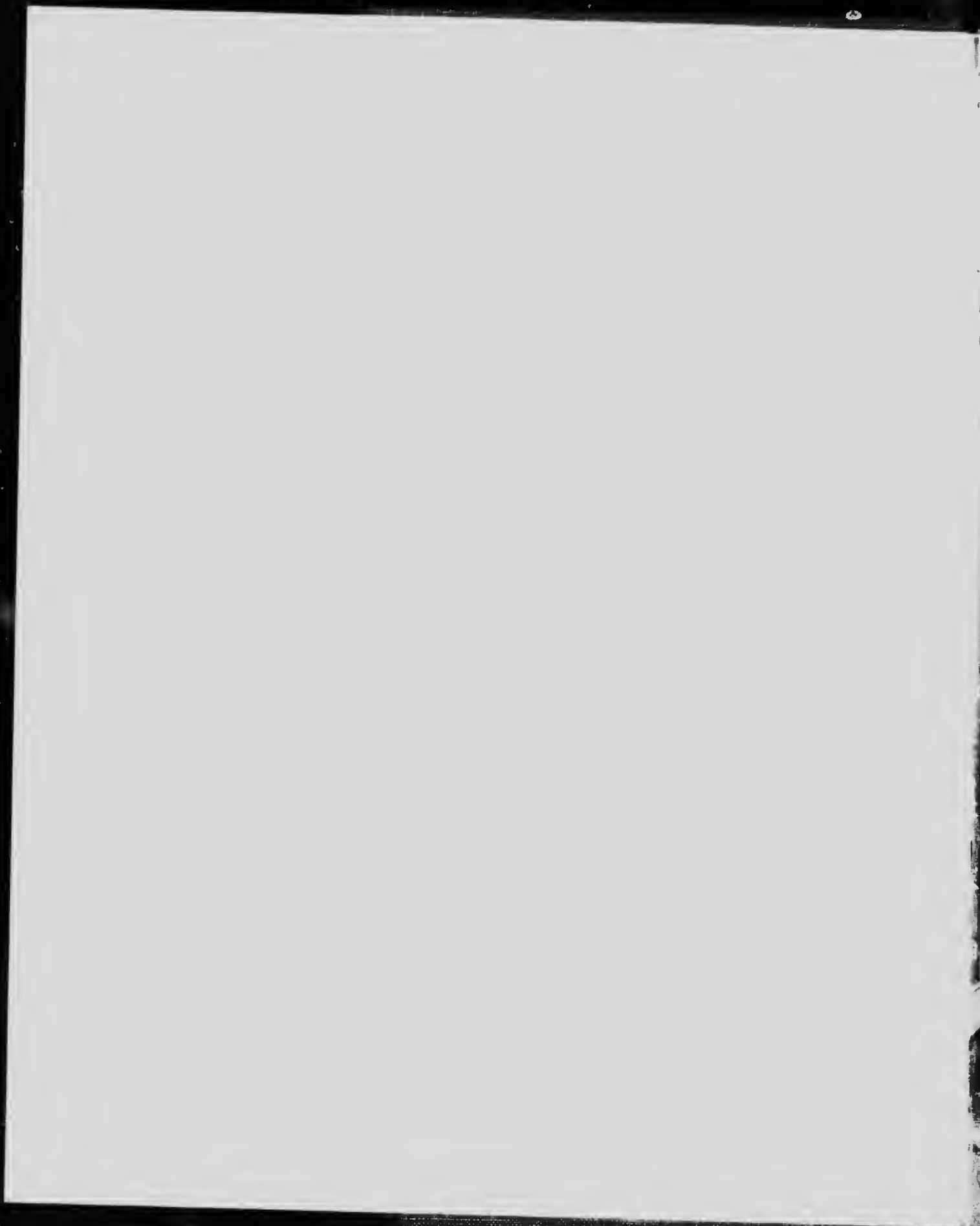
4.75

5.00



APPLIED IMAGE Inc

1653 East Main Street
Rochester, New York 14609 USA
(716) 482 - 0300 - Phone
(716) 288 - 5989 - Fax





EMPIRE
Milking Machine

SF247

E4

fol.

EMPIRE
MILKING MACHINES

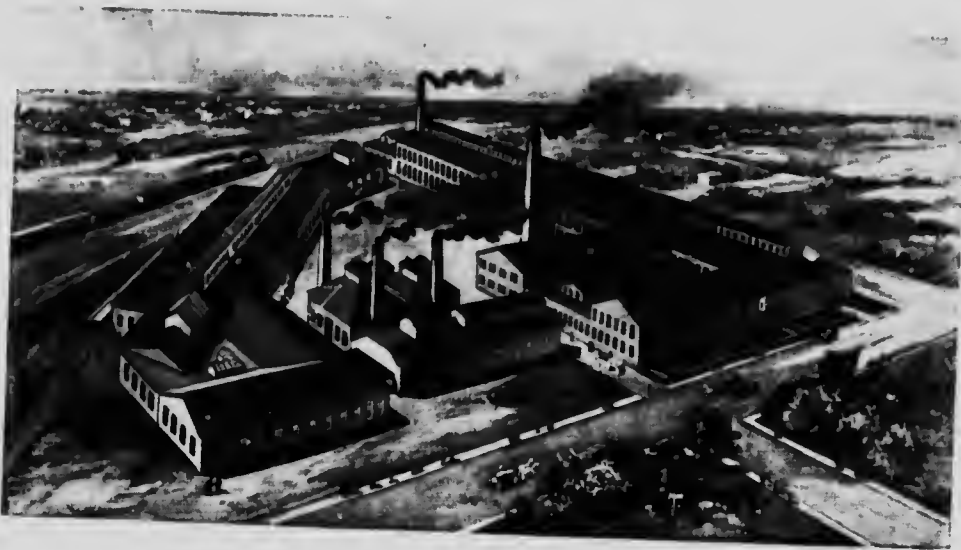
F. M. Tamblyn
Elizabethville Pa.



**EMPIRE CREAM
SEPARATOR COMPANY**

Bloomfield, New Jersey
Chicago, Illinois
Denver, Colorado
Montreal and Toronto Canada

Empire Milking Machines



*Main Office and Factory
Bloomfield, New Jersey, U. S. A.*



Empire Milking Machines

The Need for Empire Milking Machines



HERE isn't a business in the world that is more wholesome than the business of dairying. There's nothing that is much more profitable than to take a herd of good cows and make 'em better—to watch and care for them—to weed out the poor ones and favor the good ones. They grow to seem just like "members of the family," don't they?

And every man who is breeding or milking cows has a right to be proud of what he is doing for the world. For he is producing man's greatest need without taking anything away from nature. In fact, he is *adding* to the fertility of the soil, not *wasting* nature's resources.

But dairying has one drawback; *The drudgery of hand milking*. And it's a big drawback—a time-wasting, patience-trying, unnecessary thorn-in-the-flesh.

Do you wonder that hired men are hard to get wherever they have to milk by hand? Don't you begrudge every pull of the teat, yourself?

Isn't it natural for the good men to go to work in city factories where labor saving machines are provided for them, although living expenses in town are so high that they can't save money as they could if they remained on the farm?

Empire Milking Machines take the drudgery out of dairying. They are exactly what the hired man goes to the city to find—labor saving machines.

With the Empire in your dairy there will be no more *seven-day Slavery*. Human ingenuity has effectively solved the problem of milking cows; for the *Empire Milking Machine is a demonstrated success*.



Empire Milking Machines

The best hand milkers are uncertain. Hired men are often too anxious to "get through with the chores"—they milk carelessly and often do not milk the cows dry. But the Empire is dependable 365 days per year. It is an absolute necessity on every dairy farm that is operated for profit.

Think of it! When you've installed an Empire Milker with its wonderful new Super-Simple Pulsator you'll never have to milk by hand again.

The new Empire Super-Simple Pulsator, without a piston, solves the last problem of perfect machine milking—but, wait! we are getting ahead of our story. We'll tell you all about the New Super-Simple Pulsator later—on another page.

And the Empire saves over half the milking time, too. No more seven and eight o'clock suppers. Set your alarm clock an hour or an hour and a half later, and still finish the milking much earlier than you ever did before. Spend more time in the fields than you ever used to spend, and still have more leisure.

But that's not all—

An Empire Milker outfit in your dairy will save its own cost in a few months. It will enable you to get along with fewer hired men—and even if it only takes the place of one man the saving will be so great that the Empire won't cost a cent. And after it has once paid for itself it will keep right on saving money—day after day, year after year. It isn't like a plow or a cultivator, a reaper or a threshing machine that you only use for a few days once a year. You use the Empire twice a day, every day.

And the Empire Milker will bring you added milk profits by lengthening the cows' period of lactation. The Empire does this by milking the cows thoroughly and uniformly—exactly the same way at every milking.



Empire Milking Machines

The Empire Method

IN its method of operation, the Empire Milking Machine imitates nature so closely that, judging by the quiet way the cows stand when the Empire is working, you'd swear that the Empire fooled them into thinking their calves were doing the work.

At feeding time the young calf sucks—creates a vacuum which pulls the milk from the teat. So does the Empire Milker.

Then the calf swallows and *here's the important thing*—its tongue massages the teat, starting at the tip and working clear up to the udder; for when it swallows, its tongue presses against the roof of its mouth starting at its throat and finally pressing clear up against its gums. That's what happens when you swallow, too. Try it and see. Do you see how your tongue presses against the roof of your mouth?

That pressure of the calf's tongue relieves the teat by sending back into the udder the blood that was drawn down into the teat when the calf sucked.

The Empire teat cup inflation does exactly the same thing. By gentle application of atmospheric pressure—NOT compressed air—between the teat cup shell and the soft, pliable rubber inflation (see illustration), it *massages the teat from tip to udder, gently.*

The action of the Empire is always uniform and gentle, for the vacuum is controlled by a relief valve. It never sucks too hard. That's where the Empire "goes the calf one better." The poor little calf has no relief valve; if he's very hungry he may suck too hard.



Empire Teat Cup



Empire Milking Machines

No hand milker can relax and relieve the teats for he cannot give that necessary, regular, *gentle* squeeze—from tip to udder.

The Empire's uniform action—the same way at every milking—is of great importance in keeping up the cows' milk yield. For, as you know, the cows often show a decided decrease in milk when a new hand milker takes hold of them. It often takes several days for them to get used to a new man, even though he is a very good man. You see, the Empire does away with that trouble. Whether he is a new man or an old one, whether the cows are used to him or not, *every man* milks in the same uniform way with the Empire Milker.

By means of this gentle manipulation the Empire Milking Machine will protect your herd. Not only will it milk the cows perfectly, but it will lengthen their lives as profitable milk producers. It will insure larger profits and continued profits. It will return annually an amount of money in saved wages and increased milk and cream checks that is all out of proportion to the cost of an Empire outfit. The "returns" make the cost of an outfit look foolishly low.

That fact alone urges you to buy an Empire Milking Machine.



*A double unit Empire
Milker with the New
Super-Simple Pulsator*



Empire Milking Machines

The New Empire Super-Simple Pulsator *The Pulsator without a piston*

TO be successful, a milking machine *must* have a perfectly acting pulsator that causes the alternating action of suction and relief to occur with absolute regularity. The length of each "suck" and the length of each "relief" must be exactly right and the change from suction to relief and vice versa must be instantaneous.

Truly, the pulsator is the Heart of the Milking Machine.

The Empire Super-Simple Pulsator is the most wonderful development since the invention of the Empire—the successful Milking Machine.

Other Pulsators must employ complicated toggles and pistons with gaskets. No piston can be made that will not wear and leak in time. Leaks mean vacuum losses—irregularity of action.

The Super-Simple Pulsator *has no piston, no gaskets*, nothing to wear out, lose vacuum or get "out of gear." It has only five moving parts.

Its change from suction to relief is instantaneous—it does not lose a fraction of a second. Its action is as regular as that of the cow's heart.

No milk can enter and clog it so as to change or stop its action.

It cannot lose vacuum, so its action is perfect.

It is so simple that it can be taken apart and put together again in less than two minutes.



*A single unit
Empire Milker
with the New Super-
Simple Pulsator*



Empire Milking Machines

This is the New Super-Simple Pulsator removed from the Milker Pail Lid



It places the Empire Milking Machine—already the unquestioned leader—immeasurably in advance of all competition.

A moment ago we said that the action of the Super-Simple Pulsator is as regular as that of the cow's heart. Well, that's true, and that's much more important than it seems at first glance.

Think of it this way: As you know, the cow makes most of her milk *while she is being milked*. Her heart pumps blood to her udder, and there it is converted into milk. The blood comes in regular spurts—averaging between 48 and 52 of them per minute.

With perfect regularity the Empire Milking Machine takes that milk just as the cow makes it—the Empire sucks between 48 and 52 times per minute, and massages the teat an equal number of times; thus aiding the cow's heart to keep the blood in circulation.

Once set, it will never change speed. It will always operate in perfect sympathy with the cow's nervous system.

You see, that is one reason why the cows take to Empire Milking Machines—that is why they usually increase their yield of milk—because the Empire handles them gently and uniformly and in



Empire Milking Machines



Here are the parts of the
Super-Simple Pubator.
The only ones that move
are those marked "X".

sympathy with their nervous systems. If you upset the cow's nervous system her milk producing organism is hindered. The action of Empire Milking Machines will soothe the nervous cow - make her more even tempered - increase her production.

Your herd will respond to the sympathetic treatment of Empire Milking Machines; for satisfied cows are always the best producers.

The Empire Teat Cup

EMPIRE teat cups are universal—they fit all cows, eliminating the waste of time in changing teat cups that is a drawback of so many milkers.

The Empire rubber inflation is made so that it collapses from three sides and from tip to udder—imitating the calf's tongue and the roof of its mouth. The "all-round, from tip to udder" massage given by the Empire teat cup inflation is what keeps the teats in perfect condition. Other milkers fail because their teat cup inflations do not even attempt to imitate the Empire's perfect tip-to-udder action.



Empire Milking Machines



The Simple Empire Teat Cup

Its parts are:

No. 32. Teat Cup Shell.

No. 34. Metal Nipple.

No. 33. Inflation.

No. 35. Cap.

The Super-Simple Pulsator causes the action of the Empire teat cup inflation. It lets first vacuum and then plain air into the space between the metal teat cup shell and the rubber teat cup inflation. The illustrations on page five show how it works. Isn't it simple.

When air is let in between the shell and the inflation the inflation collapses, cutting off the vacuum below the teat and gently manipulating the teat. Then when

the vacuum is let in, the inflation snaps back, away from the teat, and allows the milk to be sucked into the airtight milker pail.

The stable air never touches the milk. It's just as clean when it reaches the pail as when nature made it.

In attaching Empire teat cups you won't have to tie them to the cow by an awkward strap arrangement to keep them from falling off or being kicked off.

Empire teat cups stay on the teats without tying. They do their work too well to fall off, and the cow likes them too well to kick them off.

The manufacturers whose teat cups have to be tied to the cows refer to their tie straps as "surcingles" in an effort to establish the idea that the cumbersome straps serve the same good purpose on hard milking cows that the well known surcingle serves.

This, of course, is laughable, for they have to tie their so-called "surcingle" to every cow while, as you know, it is very seldom necessary to use a real surcingle on a cow; and in most cases the cow that requires the use of a surcingle to control her is such a poor milker that she's not worth keeping in the herd.



Empire Milking Machines



*You will not have to tie the
Teat Cups to the cow.*

*One of Mr. John Sherwin's
Ayrshires. Cleveland, O.*

Empire teat cups also serve another purpose; their light weight hanging from the teats pulls the teats down slightly, just as in hand milking, you pull the teats slightly to make your cows let their milk down more readily.

Even little things like that were all carefully thought out and proven by test before the Empire Milker was first offered to dairymen, years ago. We did all of the experimenting,—but we did not experiment on our customers.

Like everything else about the Empire, the teat cups are simple—easily taken apart and reassembled—easily cleaned. That, by the way, is a big point. It means a whole lot to whoever does the cleaning.



Empire Milking Machines

Ease of Operation

EMPIRE Milking Machines are made in single units (for milking one cow at a time—see the illustration on page seven), or in double units (for milking two cows at a time—see the illustration on page six). You may take your choice.

We often advise dairymen to use double units because they do the milking just twice as fast as single units. Some manufacturers, who are unable to make double units, say that single units are the only practical ones. Just ask them why the majority of the most successful dairymen in the country use Empire double units. That question should be hard for them to answer.

But, whether you prefer single or double units—you can have your choice when you buy the Empire.

And, anyhow, Empire double units can be used as single units—to milk one cow at a time—as easily as they can be used on two cows at once. Whenever you want to make an individual test on every cow in your herd, you can simply use your Empire double units as single units. And yet, at other times you'll have all the advantages of double unit milkers.

It is easy to operate an Empire Milking Machine.

The simple, efficient Empire Vacuum Pump, illustrated on page thirteen, is belted to your engine or motor.

When the engine or motor is started, the air is drawn out of the vacuum tank (shown on the same page with the pump) and the outfit is ready for operation.

There are no complicated preparations—no heavy machinery to move from cow to cow on a truck—no pulsators to carry from place to place and attach before the milking starts.



The Vacuum Gauge and Relief Valve



Empire Milking Machines

Just carry your Empire Milker unit to the cows you want to milk, as you would carry an ordinary milk pail. Each Empire unit is complete — pail, teat cups, pulsator and all. The Super - Simple Pulsator, you know, is part of each pail lid.

Put the vacuum hose over the stall cock (located between each two cows) on the pipe line, then place the teat cups on the cow (remember, you don't have to tie 'em on) and the Empire finishes the job. It couldn't be simpler, could it?

The Empire vacuum tank together with the vacuum gauge and relief valve, insures a steady, dependable vacuum at all times. Never too much—never too little. This is a great advantage over the so-called "individual" vacuum pumps used by some milkers, for, with these individual pumps, if the engine speeds up or slows down ever so slightly a different and incorrect amount of vacuum is applied to the teats.

You wouldn't be satisfied with a hired man who fed your cows by guess, would you? who never knew whether they had been watered or not?

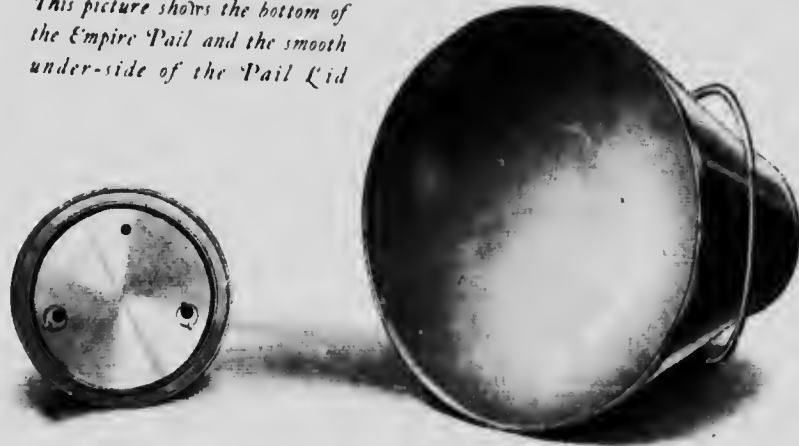
No more should you be satisfied with a milking machine that merely "guesses" at the amount of vacuum applied to the teats. There is no guess-work in the operation of the Empire.

The Vacuum Pump which is belted to Engine or Motor and the Tank that insures a steady, even amount of vacuum



Empire Milking Machines

This picture shows the bottom of the Empire Pail and the smooth under-side of the Pail Lid



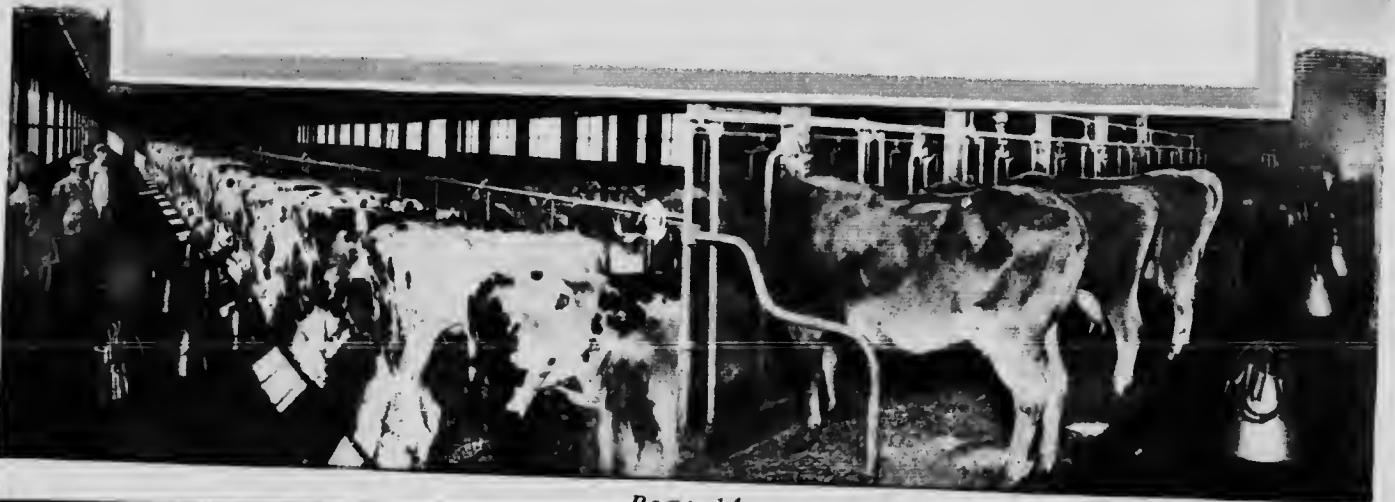
Empire Milker Pails

WE'VE told you about almost every part of Empire Milking Machines. Practically the only thing that remains is the pail.

Empire pails are strongly built of non-corrosive metal and are of a fine, polished appearance. And they are made in thirty-five pound, fifty pound and seventy pound capacity; amply large for the heaviest milking cows.

Empire pails are made in only two pieces—one for the sides and one for the bottom. They are smooth and easy to clean (notice the illustration)—no place for dirt or germs to collect. And the only opening is at the top, so there's no chance of losing vacuum at "drain-cocks" such as some other milkers have.

The Empire pail-lid, as we said before, carries the Super-Simple Pulsator as a part of it.



Empire Milking Machines



The pail-lid—vacuum cocks and pulsator—are all made of special non-rusting, non-corrosive metal; and the lid is smooth, creaseless and easy to keep clean.

It never has to be locked on; so long as there is vacuum in the pail the lid holds on tightly, so that you can carry the pail, full of milk, by the pail-lid-handle. But, when you want to empty it you don't have to *unlock* it. All you do is release the vacuum by a quarter-turn of one of the cocks on the pail-lid, and the lid unlocks itself.

One Pump—One Tank—One Pipe Line

THE Empire uses only one vacuum pump—no compressed air is used—and only one straight-away pipe line over the stanchions. You'll not need to change a thing in your dairy barn to install your Empire Milker. We build the Empire for your barn—we don't ask you to rebuild your barn to accommodate the Empire. And we don't ask you to endure any complicated, moving rods or arms over your cows' heads.



Empire Milking Machines



Empire Milkers in use on Fancher Farm, Salamanca, New York, the Home of Fancher Farm Maxie, World's Record Four-Year-Old Holstein

On What Sort of Cows Are Empires Used?

WE'VE tried to tell you *everything* you might want to know; but perhaps we've overlooked something—if we *have* don't hesitate to question us. There's nothing we enjoy more than answering questions.

Perhaps you would like to know *WHO* uses Empires. Well, we can't tell you the name of every user—to do that would take a book many times the size of this—but we'll print, on page twenty-three, the names and addresses of *an even hundred* Empire Milker users, scattered all over the United States and Canada.



Empire Milking Machines

The man who depends, for his profits, on his milk and cream checks must cut expenses to the minimum and increase production to the greatest possible point.

The Empire Milking Machine helps him to do this; for with his Empire he can milk his present herd with approximately one-third as many men as he has employed in the past; or he can keep three times as many cows without increasing his present labor costs. And, remember—whatever else the Empire will do for him, it will always protect his cows, lengthen their lactation periods and insure the most milk from the herd.

Thousands upon thousands of dairymen who own as few as six to eight cows use Empire Milkers and say they would not be without them. But Empires are used on the best dairy herds in the country as well—Mr. Chisholm's Strathglass Farm Ayrshires, Mr. Cabanna's Pine Grove Farm Holsteins, the Kelsey Ranch Holsteins, Senator Fancher's famous Holsteins, Mr. John Sherwin's Ayrshires, Mr. Charles Pratt's Jerseys, the Woronoak Farm Guernseys and registered cows of every other breed.

The Empire Milker is not a rich man's luxury—it is every dairyman's necessity; the big Registered Dairy Cow Breeders use the Empire because they always think first of their cows' comfort and safety and *because they can afford the best*. The smaller dairymen, who are struggling to build up their herds or are producing market milk, use the Empire *because they can afford nothing but the best*.

That's why you should have an Empire Milking Machine—because, for the sake of your cows and your dairy profits you cannot afford an inferior milker.

The growing seriousness of the labor question is compelling every dairyman to seriously consider milking machines, whether he wants to escape the drudgery of hand milking or not. Don't jump from the frying pan—hand milking—into the fire—an inferior milking machine.

Buy the Empire. It's the perfect milker.



Empire Milking Machines



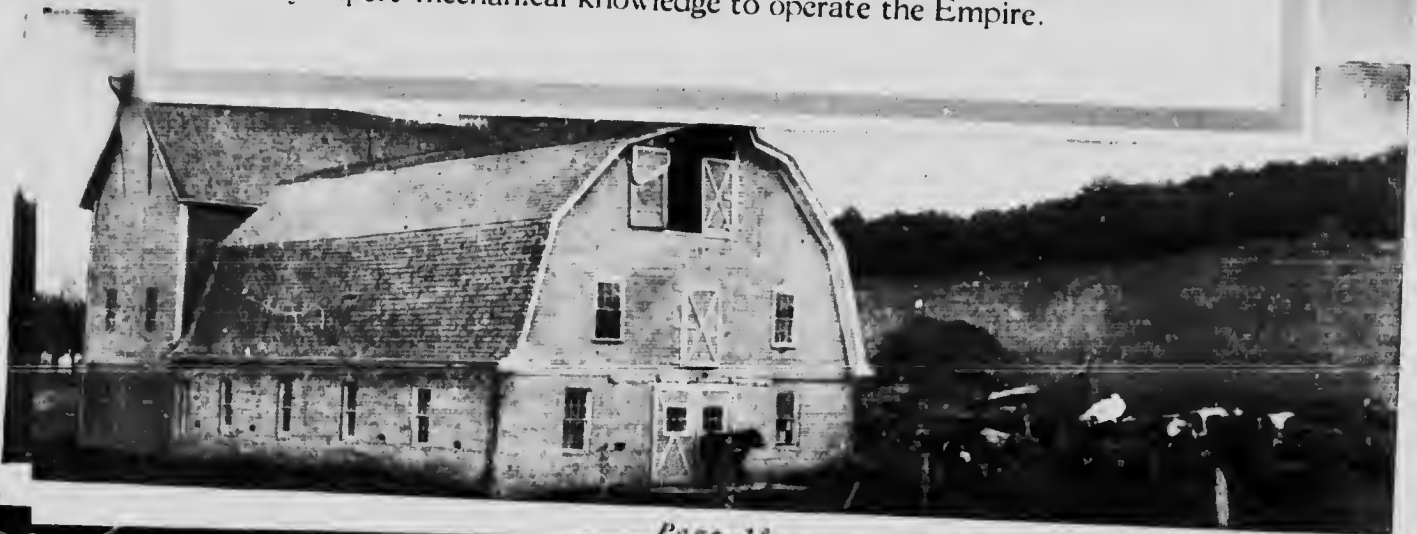
The upper picture was taken at Milking Time in the Dairy Barn of The North Dakota Agricultural Experiment Station, Fargo, North Dakota



Here is Mr. Fred Kiesel's daughter milking Jane Kornlyke of Riverside, on Jane Garden Farm, Sacramento, Cal.

Who Does the Milking?

THAT'S another question that may occur to you. Here's the answer: Any one can operate an Empire. Many and many a twelve or thirteen-year-old son or daughter is operating Empire Milkers and releasing the men-folks for other work. It doesn't take any expert mechanical knowledge to operate the Empire.



Empire Milking Machines

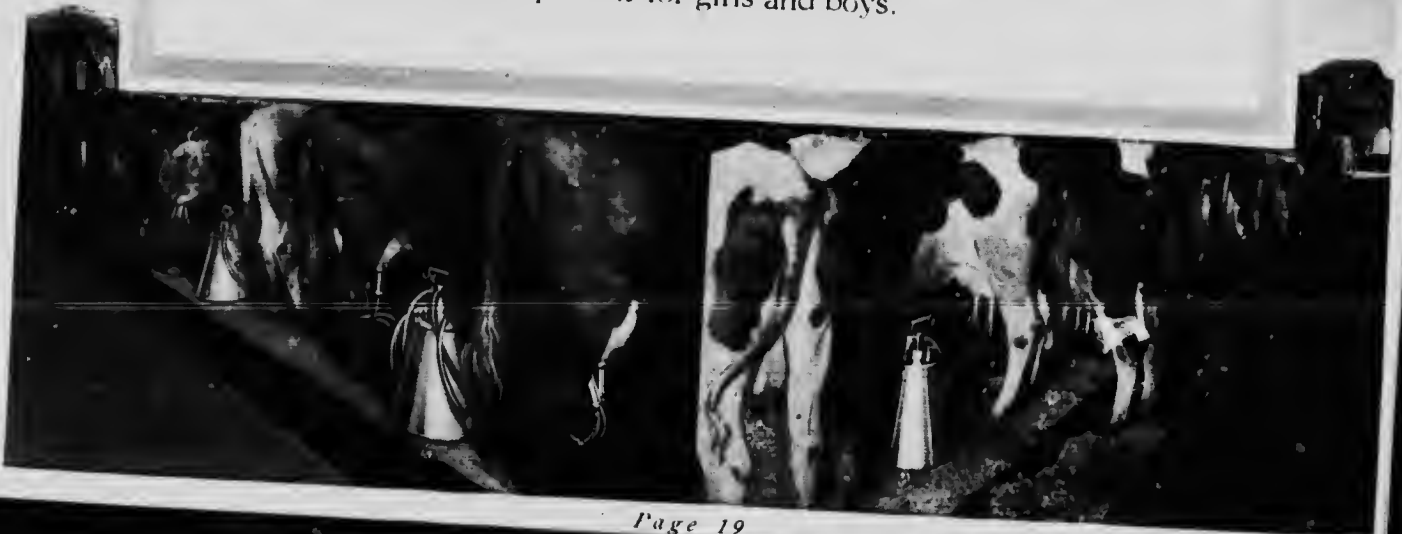
Part of Mr. John Sherwin's fine herd of Ayrshires at South Farms, near Cleveland, Ohio



"Letting Empires Do the Work" at Lakeside Rose Milk Farm, Cadahy, Wisconsin

Robert Grove, for instance, the fourteen-year-old son of Mr. A. L. Grove of Lewis Center, Ohio (near Columbus) milks his father's thirty-two grade cows in just a little over an hour. Ask Robert whether it is hard work.

You see, the Empire makes the milking pleasant for men and women and makes it possible for girls and boys.



Empire Milking Machines



*In the Dairy Barn of
J. B. Cook and Son,
at Hardwick, Vermont*

*Geo. Snyder of Fremont,
Nebraska, uses Empire
Milkers on his herd of Holsteins*



An Afterthought

NOW there's just one more thing we want to say:

Empire Milking Machines are built without regard to their cost. We don't give cost a single thought until we *know* that Empire Machines are perfect— in principle, materials and workmanship.

When we've made the best machine that *can* be made, then we put the lowest possible price on it.

You can buy inferior milking machines for less money than the Empire costs. But first cost is of little importance.

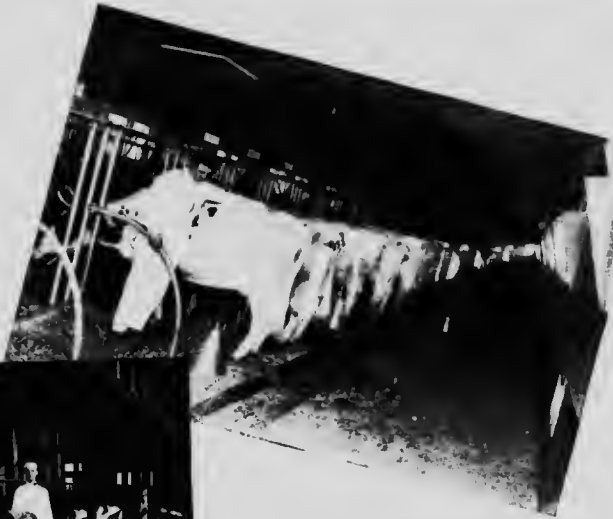
The question is, which machine will bring the greatest profits in the end? which one will satisfy best? be of least trouble and expense?

And the answer, after you've made the most thorough investigation is sure to be: "The Empire Milking Machine"—the Perfect Milking Machine.



Empire Milking Machines

Empires are used at Strathglass Farm, Port Chester, New York, where this picture was taken. Ask Supt. John Livingstone what he thinks of them. The Strathglass Herd of Ayrshires is one of the finest in the world.



This is the Dairy Barn on the Charles Pratt Estate, the home of Doris Park Lily, the Grand Champion Jersey Cow. This fine Jersey Herd is located at Glen Cove, Long Island, N. Y.



This picture shows the Empire in use in the up-to-date dairy of Mr. M. W. Chapman, (Chas. Christman, Manager), North Williston Vermont



Empire Milking Machines

A Few Strong Statements of Empire Users

Makes Milk and Electricity at Once

The Empire Cream Separator Company,
Bloomfield, New Jersey.

Rummerfield, Pa.
November 6, 1916.

Dear Sirs:—

I feel it my duty to drop you just a line to let you know how fine the milker is working. Have never had the first thing go wrong. The pump runs fine and have not even tightened the belt again since your man left. The cows have increased 28 quarts, and George is proud of his job. We have gained 20 amperes more than keeping us in lights, and only charge while milking.

Thanks for you good work here.

Sincerely yours,
(signed) C. B. Eastabrook.

"Sanitary Beyond Question"

Empire Cream Separator Co.,
Bloomfield, N. J.

Cumberland, Md.
November 11, 1916.

Dear Sirs:—

After a good many visits, and an equal number of interesting sessions, your salesman succeeded in selling me an Empire Mechanical Milker and Engine. I had been obsessed with the common fear of Mechanical Milkers, and had held out quite obstinately.

Now that I have it, I find it all you claim for it, doing its work in a comfortable, safe and satisfactory manner. It is simple, easy to operate and care for, and sanitary beyond question. The cows take to it kindly, apparently indifferent to its operation, except in-so-far as absolute comfort is depicted in their contented manner.

I regard it as a useful and meritorious invention, which should be in more general use, and cheerfully and heartily recommend it to my fellow Dairymen. Would not want to be without it.

Very truly yours,
(signed) A. G. De Haven.

"Boy Eleven Years Old Milks the Cows"

Empire Cream Separator Co.,
Bloomfield, N. J.

Forestville, Wis.
September 17, 1917.

Sirs:—

Have used a two double unit Empire Mechanical Milker for eighteen months and am highly pleased with the outfit. I am milking about 25 cows and a boy eleven years old operates the machine and milks the whole herd in 40 minutes. Would go out of the dairy business if I had to be without an Empire Milker.

Yours truly,
(signed) Edw. E. Perry.

More Milk—No Expense

Empire Separator Company,
Bloomfield, N. J.

Cornwall Bridge, Conn.
December 31, 1917.

Dear Sirs:—

I would like to state to you that I have had my milker almost one year and so far it has cost for repairs 60 cents. Our engine was out of order and I had to milk by hand, and twenty-five cows gave 40 qts. of milk less each milking by hand-milking. The milk strainer was stopped up from hair and dirt, and all together I would not go back to hand-milking—I would sell my cows. One man does the milking and cares for 50 head and carries the milk; he is one hour and twenty minutes milking.

Very truly yours,
(signed) Edw. W. Bennett.

Meets War Problems

Empire Cream Separator Co.,
Bloomfield, N. J.

Sabetha, Kansas.
October 1, 1917.

Dear Sirs:—

The Empire Milker has met the exigencies of war in our case. Three out of five of our men have volunteered or been called to the colors. Experienced dairymen or competent farm hands are hard to find.

We are pinched for help in the dairy barn and on the farm, we just had to have a machine or quit business, but on mechanical milkers we were at sea, as there are no milking machines in this locality. We got busy and wrote to eight or ten dairymen in New York, Massachusetts, and Wisconsin for information. We got it. Boiled down, the Empire led by a good majority.

We took advice. One man is now doing the work in the dairy barn that he and the young man in France formerly did. Now we can't do without it—it is a necessity.

One man does the work of two and we believe two could do the work of five. The cows like it. It has a soft and better squeeze than the human hand.

Very truly yours,
THE COLLINS FARM COMPANY.

Mr. Humphrey Comes Back for More

Empire Cream Separator Co.,
Bloomfield, N. J.

Hanlontown, Iowa.
September 14, 1917.

Gentlemen:—

I purchased my first Empire Milker November, 1916, one double unit, and used it to my entire satisfaction. Later I sold out and purchased another farm close to town for convenience to school, and on this farm I have installed my second Empire Milker, because I believe in the Empire Milker.

(signed) Wm. H. Humphrey.

Empire Milking Machines

An Even Hundred Empire Users

Harvey Houck, Grand Gorge, N. Y.
Frank Baumgartner, Joliet, Ill.
H. D. C. Bannister, Genoa Jet, Wis.
H. C. Hanson, Fresno, Cal.
U. S. Naval Hospital, Ft. Lyon, Colo.
E. V. Babcock, Valencia, Pa.
South Farms, Willoughby, O.
J. B. Andrews, Roanoke, Va.
S. O. Hillis, Hobart, N. Y.
F. F. Field Holstein Co., Brockton, Mass.
A. A. Dunklee, So. Vernon, Vt.
J. O. Pillsbury, Unity, Me.
L. E. Erwin, Honey Grove, Tex.
E. H. Beardsley, Mesa, Ariz.
Geo. Mogul, Freeport, Ill.
State Hospital, Traverse City, Mich.
Lakeside Rose Milk Farm, Cudahy, Wis.
Oakdale Sanitarium, Oakdale, Ia.
John Crowe, Dassel, Minn.
E. E. Risley, Walton, N. Y.
Horace Allen, New Milford, Conn.
C. J. Bell, Hollis, N. H.
Nova Scotia Agr. College, Truro, N. S.
Baron De Hirsch Agr. School, Woodbine, N. J.
F. C. Titus, Wheatland, Wyo.
W. J. Cummings, Winnipeg, Alberta, Can.
Strathglass Farm, Port Chester, N. Y.
Edgewood Farms, Pewaukee, Wis.
Walker Gordon Farm, Charles River, Mass.
Clarence Breese, Lima, O.
Westwood Stock Farm, Farmington, Minn.
Daniel Griffith, Gouverneur, N. Y.
Theodore Natson, Tolley, N. D.
Valemore Sanitarium, Watrous, N. M.
A. S. Hough, Edmonton, Alberta, Canada.
Drew Bros., Newton, N. J.
Three Forks Dairy, Three Forks, Mont.
L. A. Spies, St. Jacobs, Mo.
Frank M. Smith, Springfield Center, N. Y.
Gottlieb Burns, Milford Center, O.
C. P. Fisher, Owatonna, Minn.
E. W. Smith, Richford, Vt.
Gunn's, Ltd., Toronto, Ont.
Yory Bros., Ceres, Cal.
H. V. Dickson, M.P.P., Hammond River, N. B.
Daniel L. Jones, Hermon, N. Y.
Stony Croft Farm, Ste. Anne De Bellevue, Que.
Emerson Ranch, Brush, Colo.
Geo. S. Henry, M.P., Toronto, Ont.
H. H. Showerman, Walla Walla, Wash.
Augusta State Hospital, Augusta, Me.
Chas. Finley, Hayfield, Minn.
F. A. Helmuth, Wyoming, Minn.
Geo. Dewey, Edinboro, Pa.
C. F. Clark, Culpepper, Va.
Earl Kirkpatrick, Byron, Okla.
British Columbia Experimental Farm, Agassiz, B. C.
Dr. Frederick Taylor, Pulaski, Pa.
Ira F. Collins, Sabetha, Kansas
Minnequa Hospital Dairy, Pueblo, Colo.
Central Experimental Farm, Ottawa, Ont.
Pequest Farms, Belvidere, N. J.
Carnation Stock Farms, Stuart Sta. Wash.
W. J. Zumdahl, Foristown, Ill.
Pine Grove Farms, Elma Center, N. Y.
King Dairy Farm, Selida, Colo.
Manitoba Agr. College, Winnipeg, Manitoba
W. E. Cann, Haverford, Pa.
Virgil Avery, Corvallis, Ore.
A. W. Clayton, Madison, Wis.
McDonald College, Ste. Anne de Bellevue, Que.
W. H. Clark, West Chester, Pa.
St. Mary's Training School, Des Plaines, Ill.
Fancher Farm, Salamanca, N. Y.
Ontario Agricultural College, Guelph, Ont.
Woronoak Farms, Westfield, Mass.
Blaine Steensland, Hollandale, Wis.
Rolland Ness, Calgary, Alberta, Canada
Chas. McFrederick, Jerusalem, O.
Fred Pabst, Oconomowoc, Wis.
Thomas Holt, Forestville, Conn.
Humphrey Dairy, Clovis, N. M.
Henry Rutledge, Galilee, Pa.
W. H. Mae, Cortland, N. Y.
J. R. Bradshaw, Phoenix, Ariz.
Wm. Arbery, Sherbrooke, P. Q., Canada.
A. A. Hartshorn Holstein Co., Hamilton, N. Y.
Quaker Hill Farms, Plainfield, N. J.
A. G. Cleghorn, Ramona, S. D.
L. E. Woodsend, Fresno, Cal.
E. S. Chandler, Richville, N. Y.
A. L. Grove, Lewis Center, O.
W. H. Wilbur, Tulare, Cal.
J. K. Montague, Enosburg Falls, Vt.
Wm. Henderson, Tipton, Ia.
C. J. Corliss & Son, Coats, Kas.
Wallace Holstein Co., Wallingford, Conn.
Alliston Stock Farm, Chesterville, Ont.
Haywood Farm, Gardner, Mass.
Heard Bros., New Westminster, B. C.

Empire Means Service

EMPIRE Milking Machines have earned for themselves an impressive reputation for service and satisfaction. Thousands upon thousands of installations from Maine to California and from the Gulf to the Northern part of Canada have helped to earn this reputation.

Empire Milker users played a large part in creating the present immense demand for Empire Milkers.

You might look at the Empire Reputation as if it were a building—each user represents a stone in the wall of the building. Considered

Empire Milking Machines

singly and alone, perhaps each one does not amount to very much. But taken collectively, the stones form a colossal structure so impressive as to have swayed public opinion to Empire Milkers in a flood that cannot be stemmed. For the Empire is admitted to be the successful milking machine; the leader of all.

Empire Milker users have published our integrity, they have told their friends about *Empire quality* and *honesty* and *fair treatment*. They know that we do not boast of impossible feats; that we do not make impossible promises; that we are modest in our claims; and that we *more than fulfill any promises we make*.

We don't want you to take our word for these things. We'd much prefer to have you ask *any Empire Milker user, anywhere*.

The Empire Cream Separator Company was organized nearly 30 years ago; it is a strong, substantial organization with branch offices, warehouses and dealers located all over the continent. Every branch is organized to give *instant service* to Empire users—no delays—no disappointments—just the quickest and most courteous attention we know how to give.

The goodness of the machine you buy amounts to little if its quality is not backed up by a fair, honest and *substantial* manufacturer who is always ready to see that you get the service and satisfaction that you have a right to demand, and that you *continue* to get that service and satisfaction, day in and day out—no matter what happens.

Users of Empire Milking Machines are *guaranteed* that sort of service. The Empire Cream Separator Company is in business for no other purpose than to give its customers perfect satisfaction; for we realize that *satisfied customers* have built our great business to its present size.

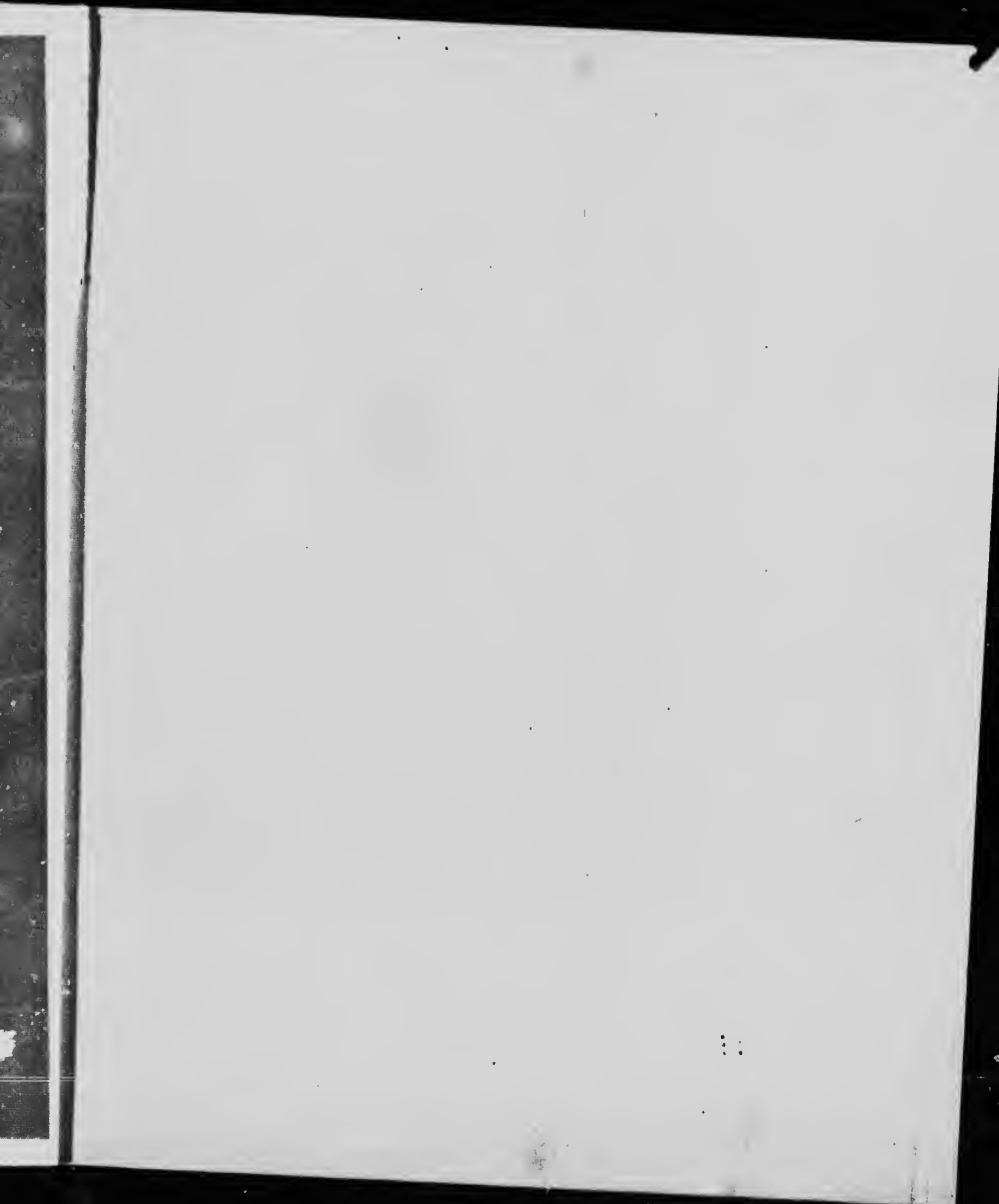
A moment ago we said that we never boast of impossible things. Here is one thing of which we *do* boast:

There isn't a better milking machine in the world than the Empire Milking Machine; and when better milking machines *are* made they will bear the Empire Trade Mark.

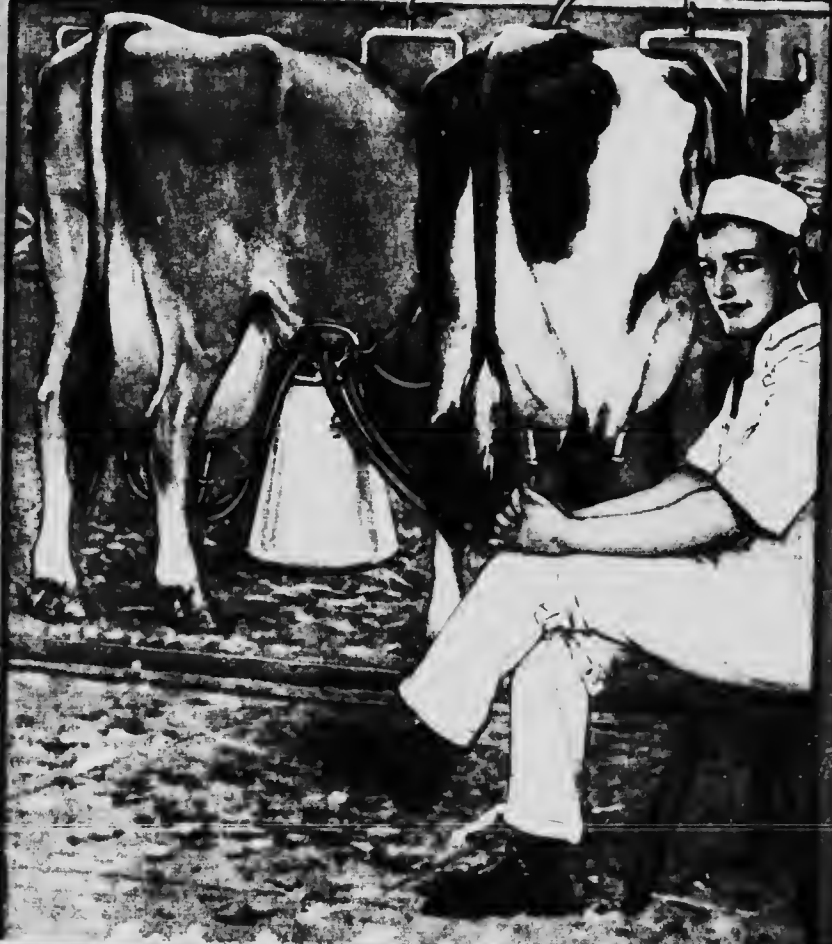
And our promise to you is this: After you've bought your Empire Milker Outfit you'll never regret it; for you'll get a dime's worth of satisfaction for every penny you invest.

The Empire guarantee stands ready to make good that promise, and every member of the Empire Organization stands back of the Empire guarantee.

7467 52



350
118



EMPIRE
MILKING MACHINE

THE PERFECT MILKER

**EMPIRE MILKING MACHINE
USED ON THIS FARM**



