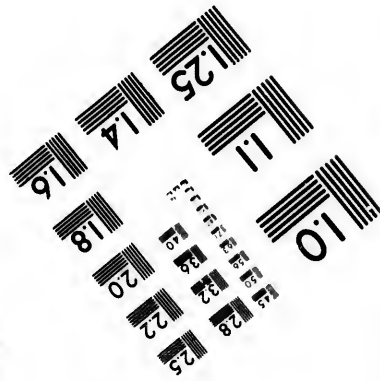
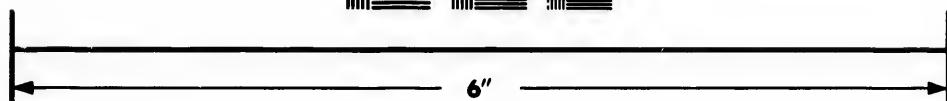
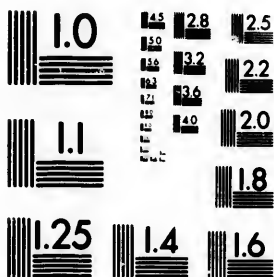
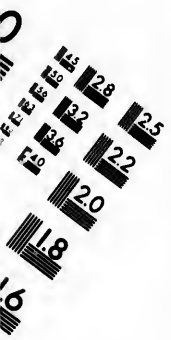


**IMAGE EVALUATION
TEST TARGET (MT-3)**



**Photographic
Sciences
Corporation**

23 WEST MAIN STREET
WEBSTER, N.Y. 14580
(716) 872-4503



**CIHM/ICMH
Microfiche
Series.**

**CIHM/ICMH
Collection de
microfiches.**



Canadian Institute for Historical Microreproductions / Institut canadien de microreproductions historiques



© 1985

Technical and Bibliographic Notes/Notes techniques et bibliographiques

The Institute has attempted to obtain the best original copy available for filming. Features of this copy which may be bibliographically unique, which may alter any of the images in the reproduction, or which may significantly change the usual method of filming, are checked below.

L'Institut a microfilmé le meilleur exemplaire qu'il lui a été possible de se procurer. Les détails de cet exemplaire qui sont peut-être uniques du point de vue bibliographique, qui peuvent modifier une image reproduite, ou qui peuvent exiger une modification dans la méthode normale de filmage sont indiqués ci-dessous.

- | | |
|--|---|
| <input type="checkbox"/> Coloured covers/
Couverture de couleur | <input type="checkbox"/> Coloured pages/
Pages de couleur |
| <input type="checkbox"/> Covers damaged/
Couverture endommagée | <input type="checkbox"/> Pages damaged/
Pages endommagées |
| <input type="checkbox"/> Covers restored and/or laminated/
Couverture restaurée et/ou pelliculée | <input type="checkbox"/> Pages restored and/or laminated/
Pages restaurées et/ou pelliculées |
| <input type="checkbox"/> Cover title missing/
Le titre de couverture manque | <input type="checkbox"/> Pages discoloured, stained or foxed/
Pages décolorées, tachetées ou piquées |
| <input type="checkbox"/> Coloured maps/
Cartes géographiques en couleur | <input type="checkbox"/> Pages detached/
Pages détachées |
| <input checked="" type="checkbox"/> Coloured ink (i.e. other than blue or black)/
Encre de couleur (i.e. autre que bleue ou noire) | <input type="checkbox"/> Showthrough/
Transparence |
| <input checked="" type="checkbox"/> Coloured plates and/or illustrations/
Planches et/ou illustrations en couleur | <input type="checkbox"/> Quality of print varies/
Qualité inégale de l'impression |
| <input type="checkbox"/> Bound with other material/
Relié avec d'autres documents | <input type="checkbox"/> Includes supplementary material/
Comprend du matériel supplémentaire |
| <input type="checkbox"/> Tight binding may cause shadows or distortion
along interior margin/
La reliure serrée peut causer de l'ombre ou de la
distortion le long de la marge intérieure | <input type="checkbox"/> Only edition available/
Seule édition disponible |
| <input type="checkbox"/> Blank leaves added during restoration may
appear within the text. Whenever possible, these
have been omitted from filming/
Il se peut que certaines pages blanches ajoutées
lors d'une restauration apparaissent dans le texte,
mais, lorsque cela était possible, ces pages n'ont
pas été filmées. | <input checked="" type="checkbox"/> Pages wholly or partially obscured by errata
slips, tissues, etc., have been refilmed to
ensure the best possible image/
Les pages totalement ou partiellement
obscurcies par un feuillet d'errata, une pelure,
etc., ont été filmées à nouveau de façon à
obtenir la meilleure image possible. |
| <input type="checkbox"/> Additional comments:/
Commentaires supplémentaires: | |

This item is filmed at the reduction ratio checked below/
Ce document est filmé au taux de réduction indiqué ci-dessous.

10X	14X	18X	22X	26X	30X
<input type="checkbox"/>	<input type="checkbox"/>	<input type="checkbox"/>	<input type="checkbox"/>	<input type="checkbox"/>	<input checked="" type="checkbox"/>
12X	16X	20X	24X	28X	32X

The copy filmed here has been reproduced thanks to the generosity of:

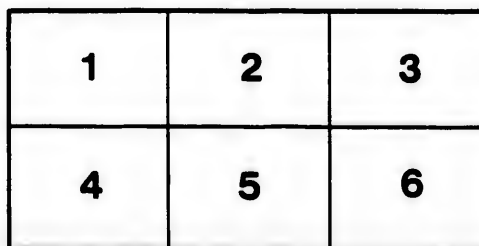
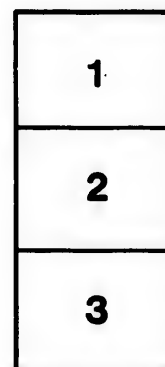
Brock University
St. Catharines

The images appearing here are the best quality possible considering the condition and legibility of the original copy and in keeping with the filming contract specifications.

Original copies in printed paper covers are filmed beginning with the front cover and ending on the last page with a printed or illustrated impression, or the back cover when appropriate. All other original copies are filmed beginning on the first page with a printed or illustrated impression, and ending on the last page with a printed or illustrated impression.

The last recorded frame on each microfiche shall contain the symbol \rightarrow (meaning "CONTINUED"), or the symbol ∇ (meaning "END"), whichever applies.

Maps, plates, charts, etc., may be filmed at different reduction ratios. Those too large to be entirely included in one exposure are filmed beginning in the upper left hand corner, left to right and top to bottom, as many frames as required. The following diagrams illustrate the method:



L'exemplaire filmé fut reproduit grâce à la générosité de:

Brock University
St. Catharines

Les images suivantes ont été reproduites avec le plus grand soin, compte tenu de la condition et de la netteté de l'exemplaire filmé, et en conformité avec les conditions du contrat de filmage.

Les exemplaires originaux dont la couverture en papier est imprimée sont filmés en commençant par le premier plat et en terminant soit par la dernière page qui comporte une empreinte d'impression ou d'illustration, soit par le second plat, selon le cas. Tous les autres exemplaires originaux sont filmés en commençant par la première page qui comporte une empreinte d'impression ou d'illustration et en terminant par la dernière page qui comporte une telle empreinte.

Un des symboles suivants apparaîtra sur la dernière image de chaque microfiche, selon le cas: le symbole \rightarrow signifie "A SUIVRE", le symbole ∇ signifie "FIN".

Les cartes, planches, tableaux, etc., peuvent être filmés à des taux de réduction différents. Lorsque le document est trop grand pour être reproduit en un seul cliché, il est filmé à partir de l'angle supérieur gauche, de gauche à droite, et de haut en bas, en prenant le nombre d'images nécessaire. Les diagrammes suivants illustrent la méthode.

re
détails
es du
modifier
er une
filmage

es

errata
to

pelure,
on à

32X





SOUVENIR ALBUM of CANADIAN STATESMEN

PUBLISHED BY

THE NEWS PRINTING CO. (LTD.)

Toronto.

SUPPLEMENT TO THE WEEKLY NEWS.



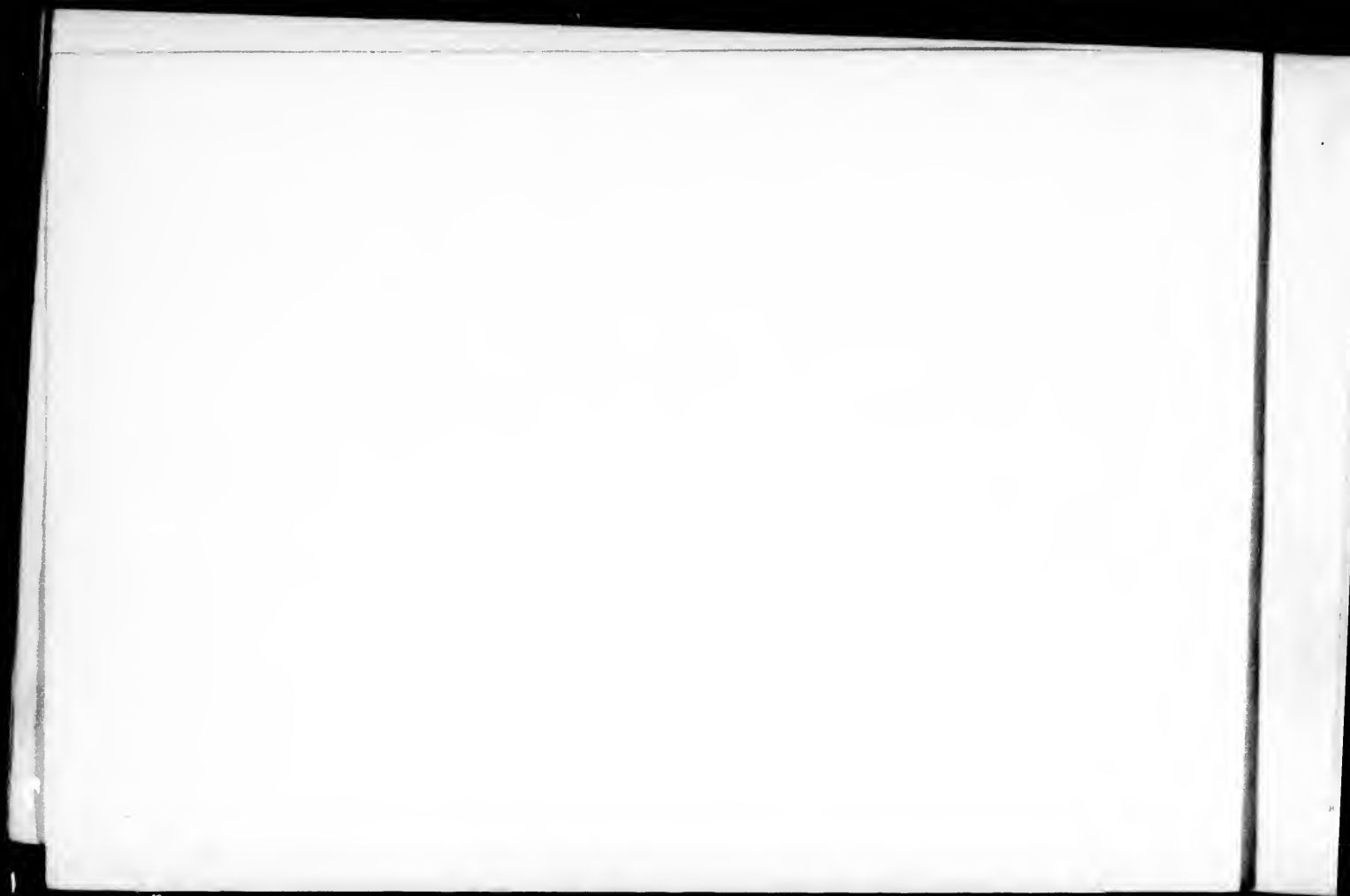


HIS EX LORD STANLEY, K G C B, GOV. GEN.

SOUVENIR ALBUM
: OF :
**Canadian...
...Statesmen**

PUBLISHED : BY
THE NEWS PRINTING CO.
TORONTO (LIMITED)

Supplement to The Weekly News





REV. JOHN Wm. CASSIN, D.D.

1840.



REV. AMOS A. PHELPS, D.D.

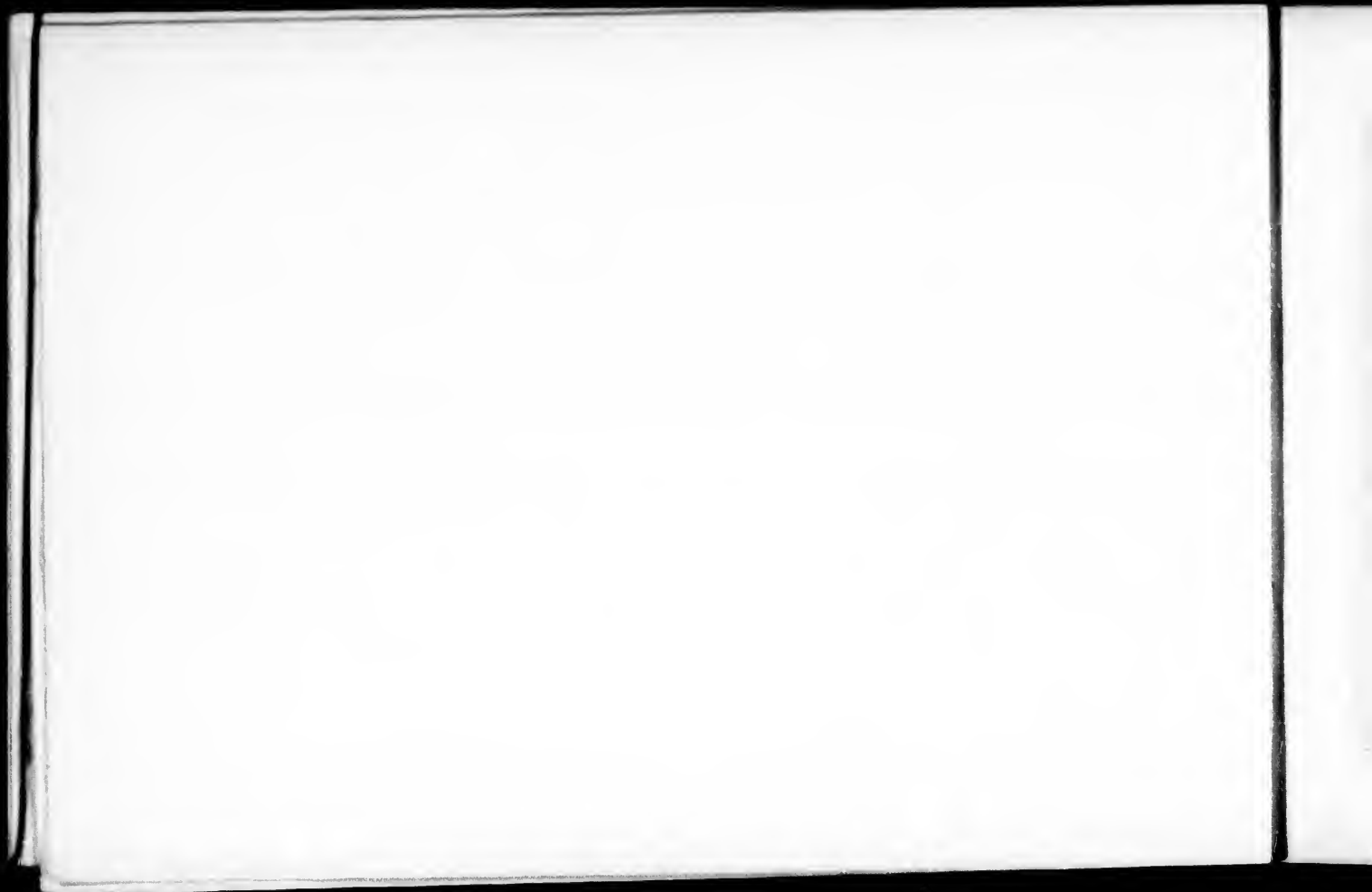
1840.



RT. HON. SIR JOHN A. MACDONALD, G.C.B., Premier of Canada, Acting Minister
of Railways and Canals

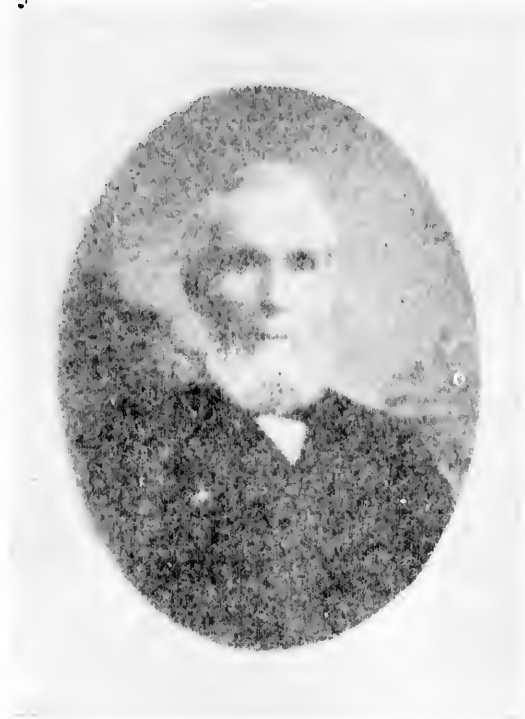


SIR CHAS. TUPPER, Baronet, G.C.M.G., C.B., Secretary Canadian Government
in London, England.

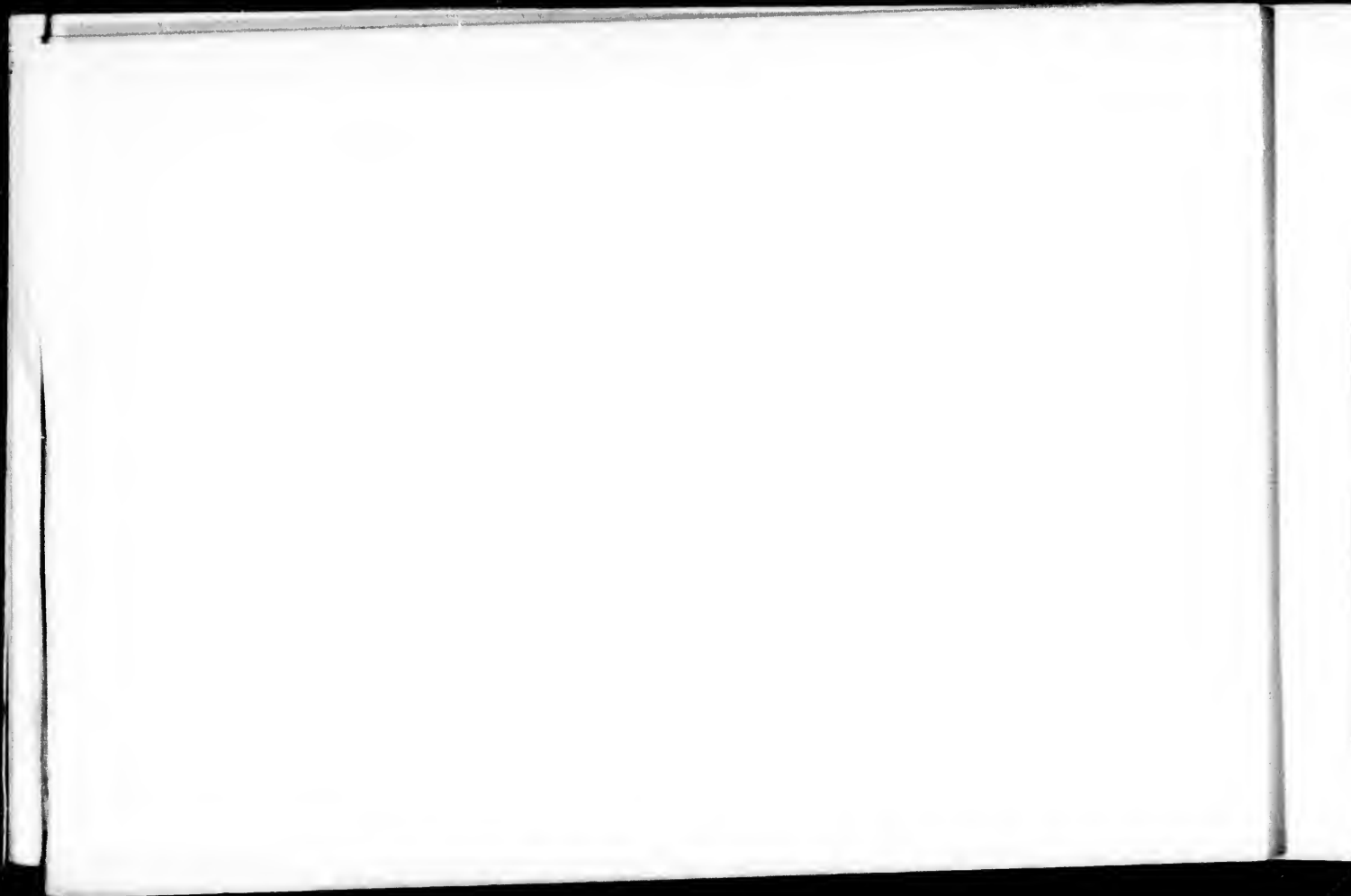




HON. EDWARD CLARK MITCHELL



HON. JOHN CALHOUN

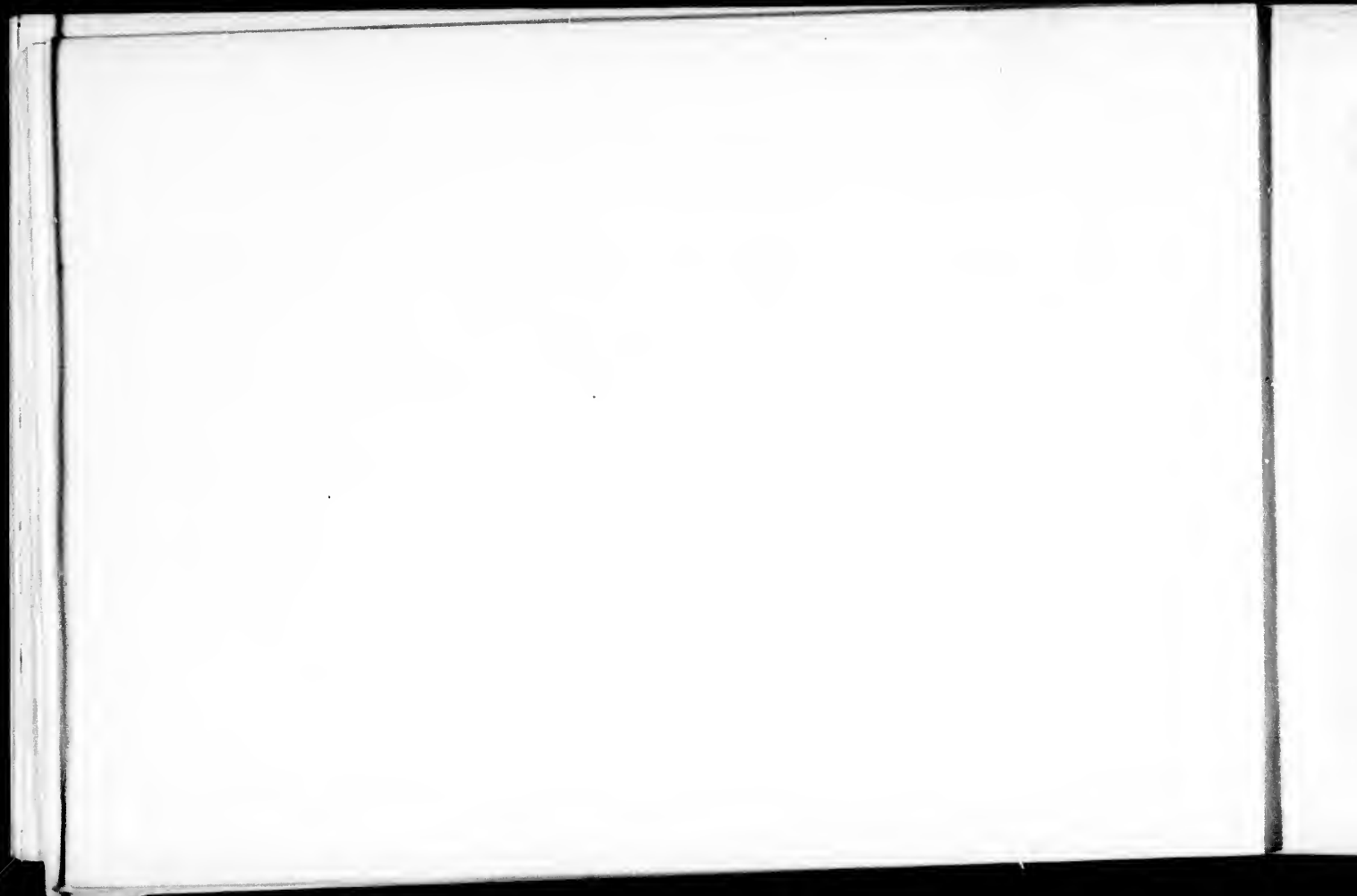




HON EDWARD BLAKE, M.P., M.A., LL.D., Q.C.



HON ALEX. MACKENZIE, M.P., P.C.









HON. SIR JNO S. D. THOMPSON, K.C.M.G., Q.C., Minister of Justice



HON. WILFRID LAURIER, M.P., B.C.L., Q.C., P.C.

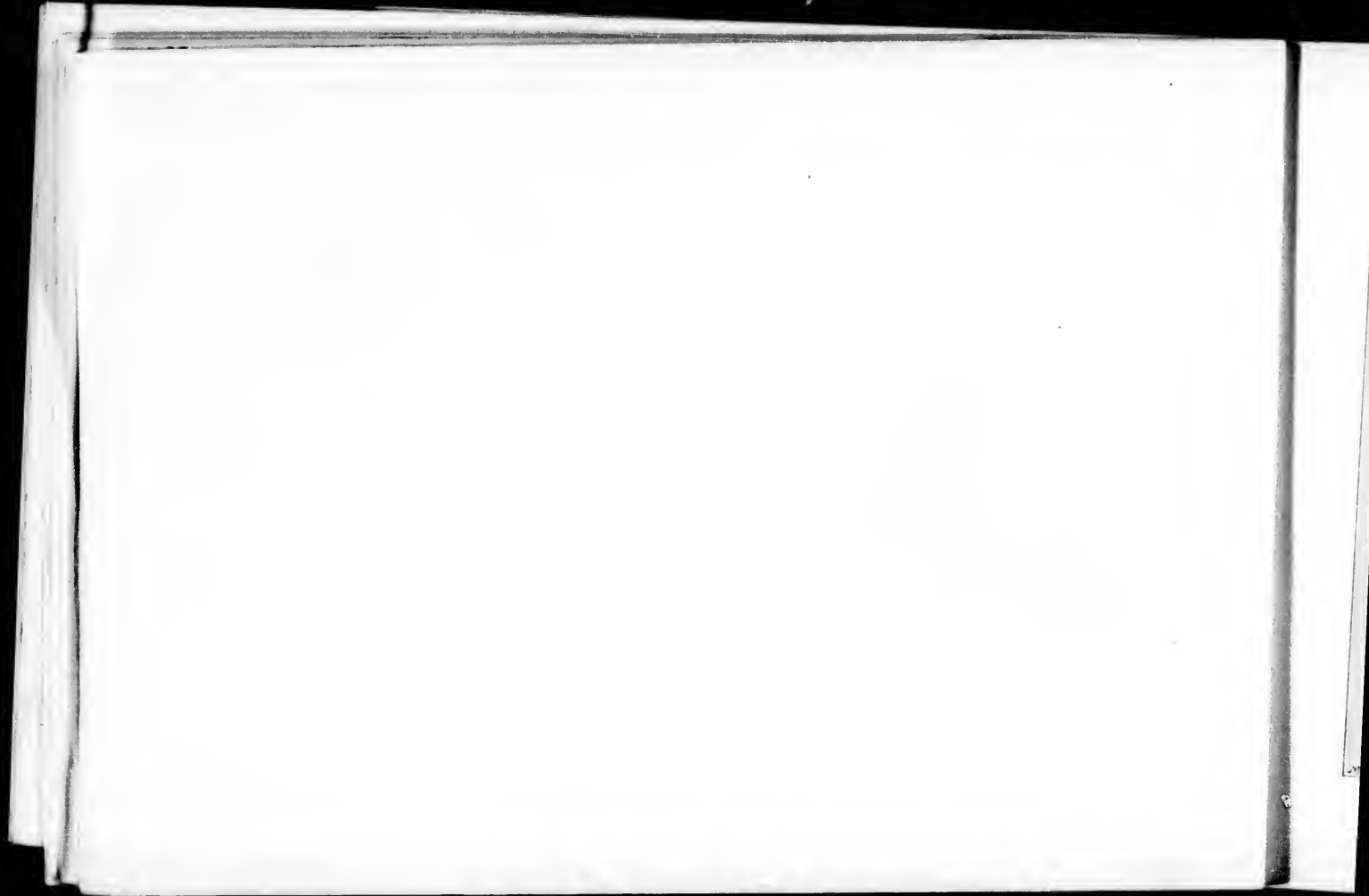




ONE OF THE ANTIQUE KE M... ..



... ..

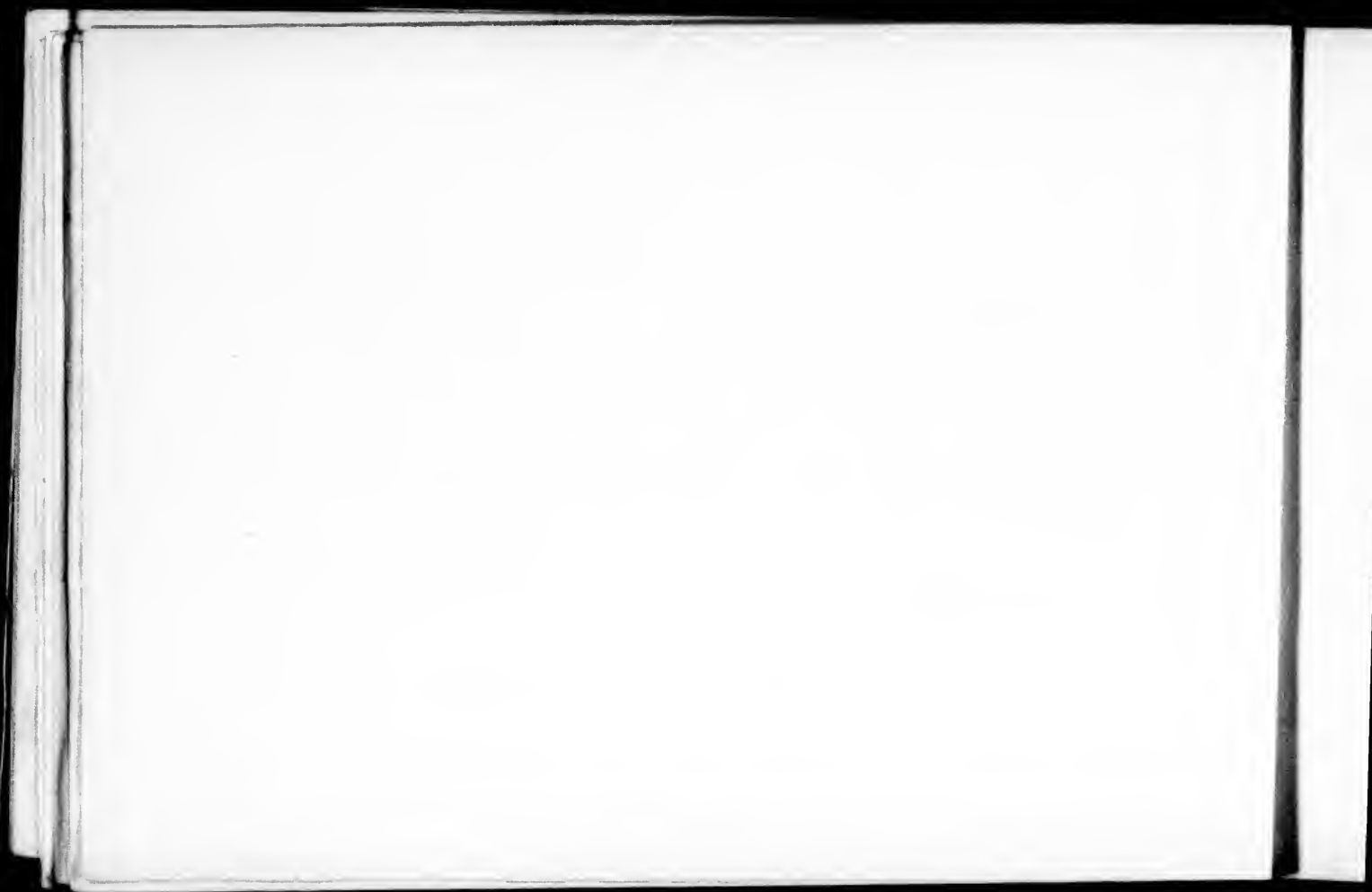




HON. SIR H. L. LANGEVIN, K.C.M.G., C.B., Minister of Public Works



HON. SIR RICHARD JOHN CARTWRIGHT, M.P., K.C.M.G., P.C.

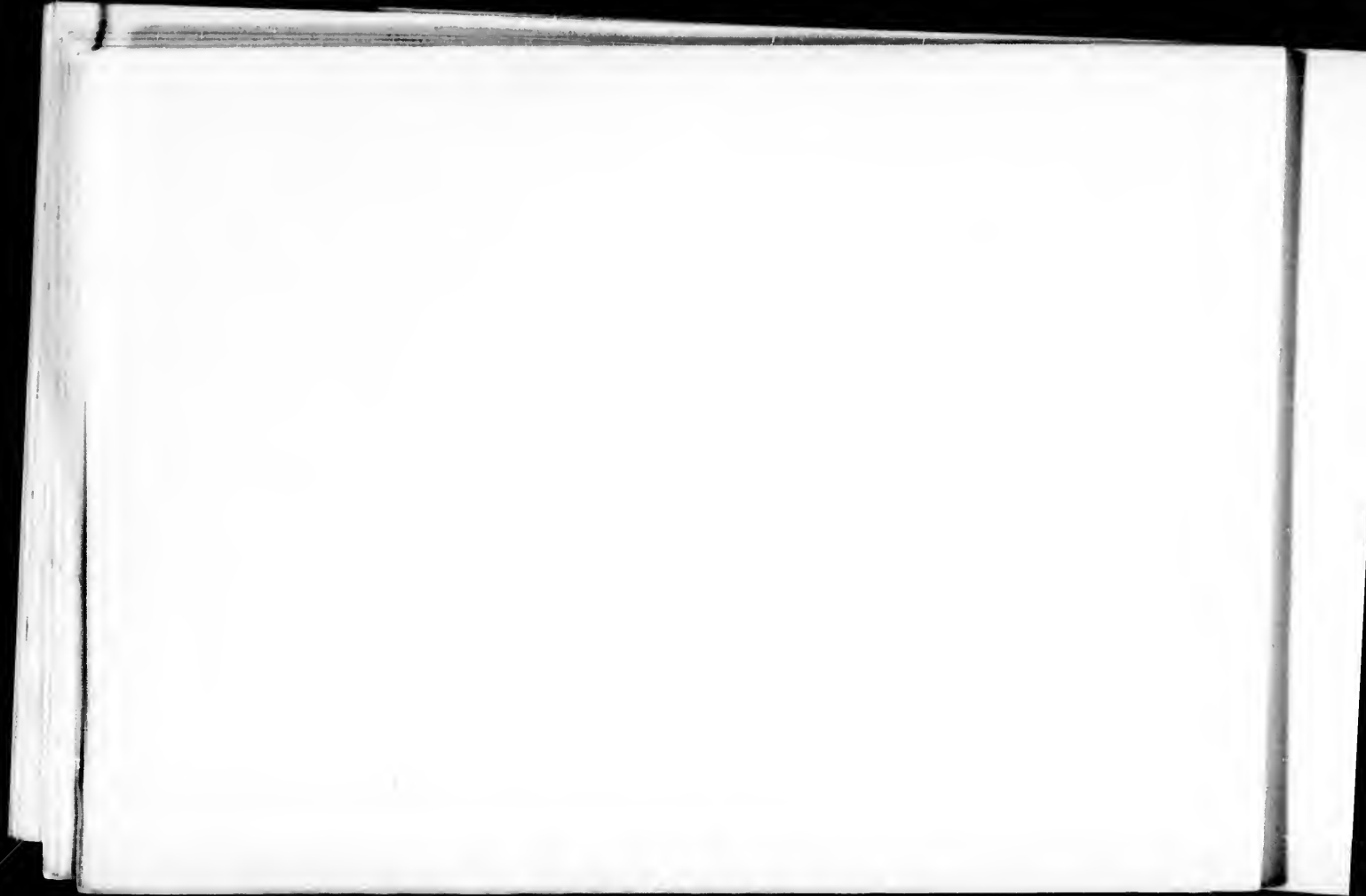




CHARLES C. CAMPBELL



MARY C. CAMPBELL

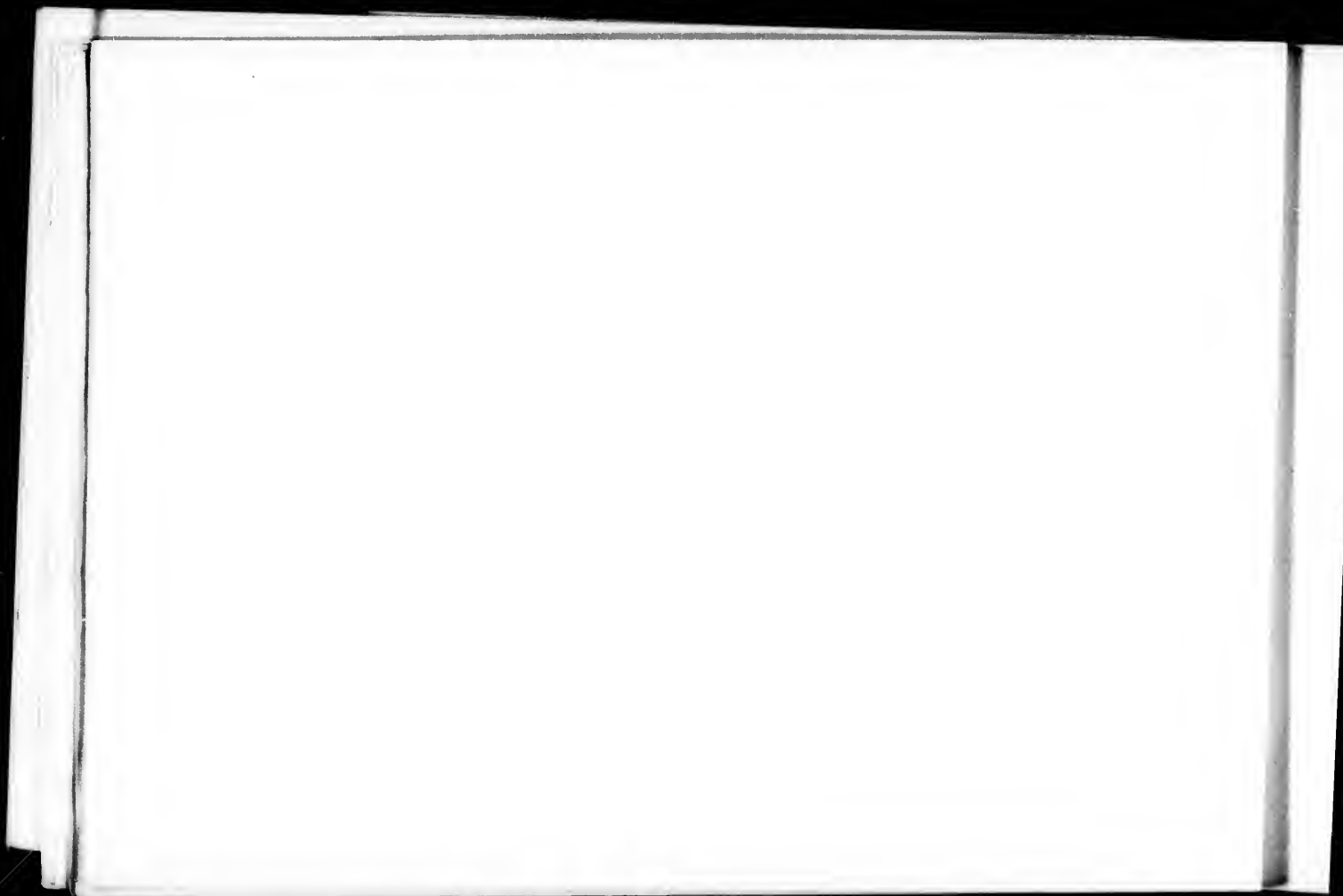




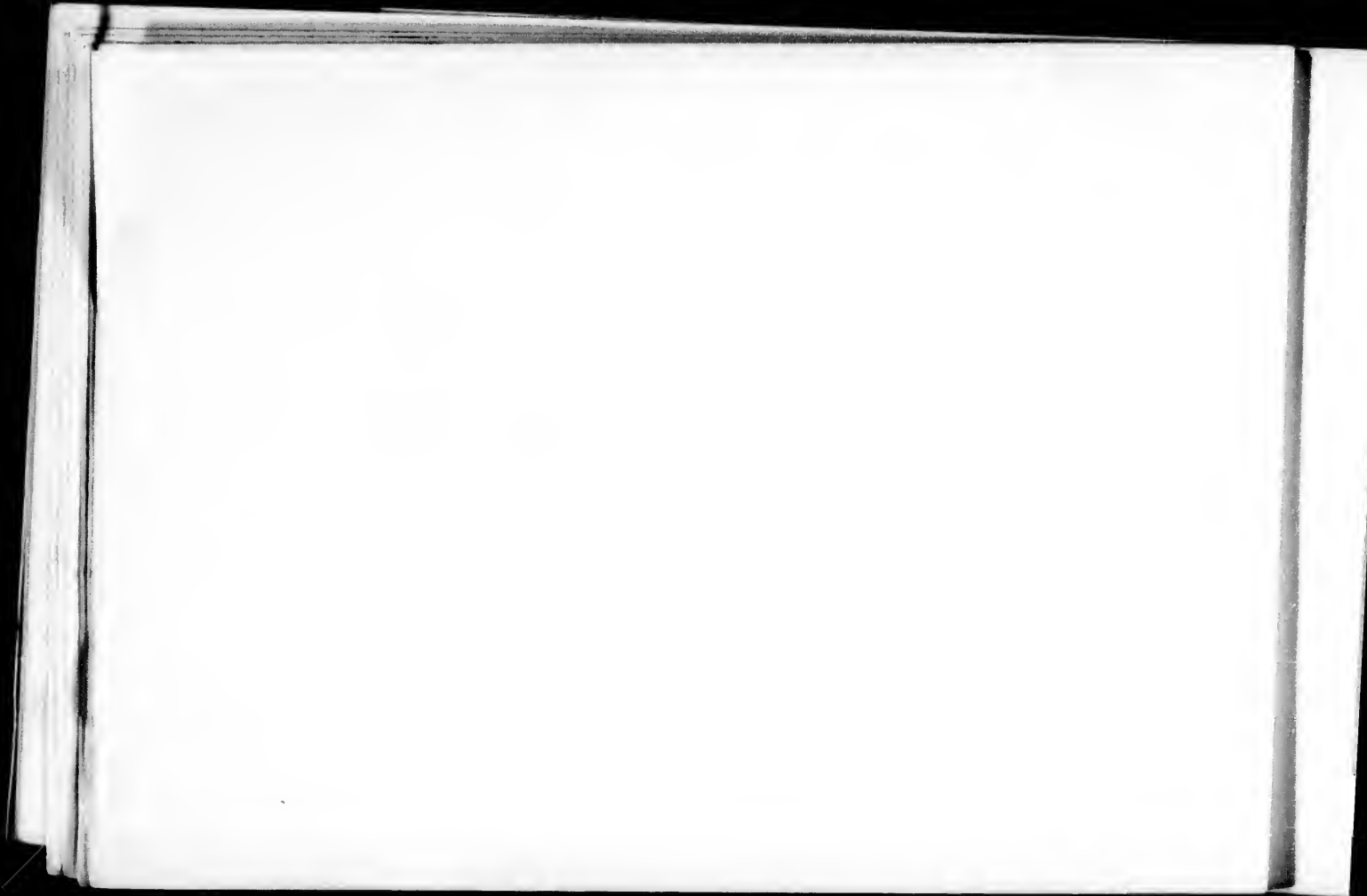
HON JOHN CARLING, Minister of Agriculture



HON. DAVID MILLS, M.P., L.L.B.





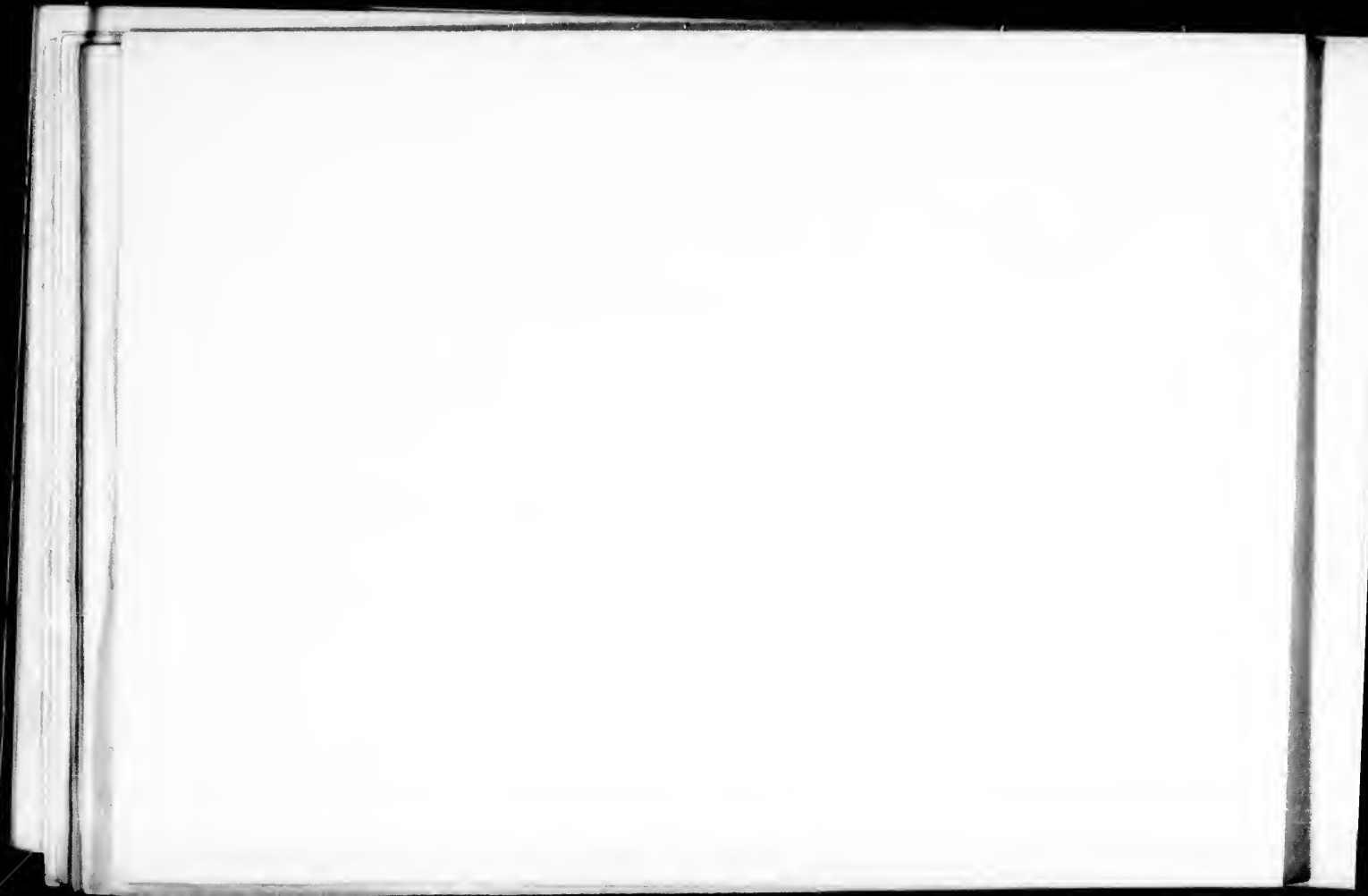




HON JOHN COSTIGAN, Minister of Inland Revenue



HON. JNO. HAGGART, Postmaster General.

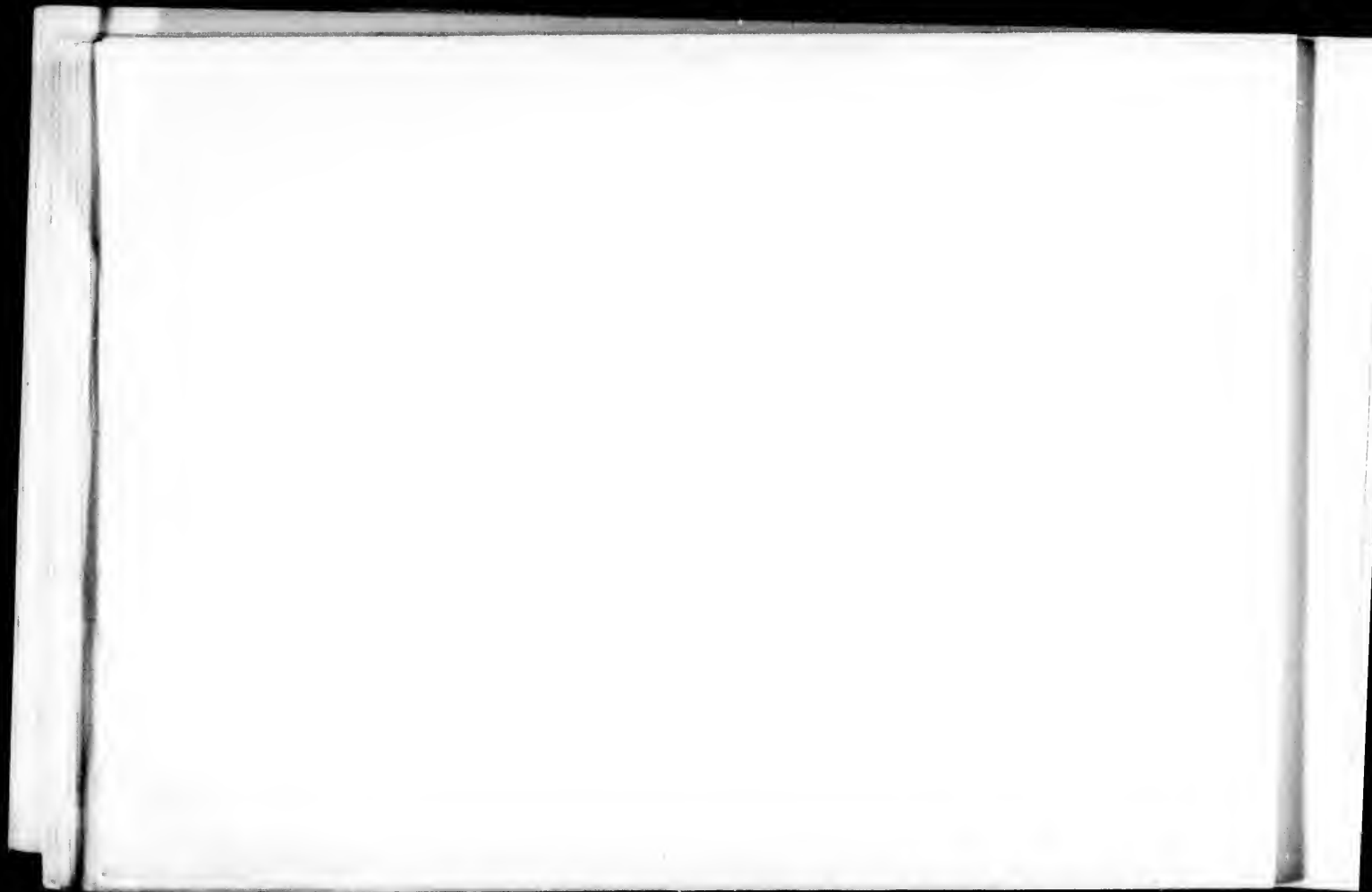




Portrait of a man with a beard, wearing a suit and bow tie.



Portrait of a man with a beard, wearing a military uniform with a cross on the chest.

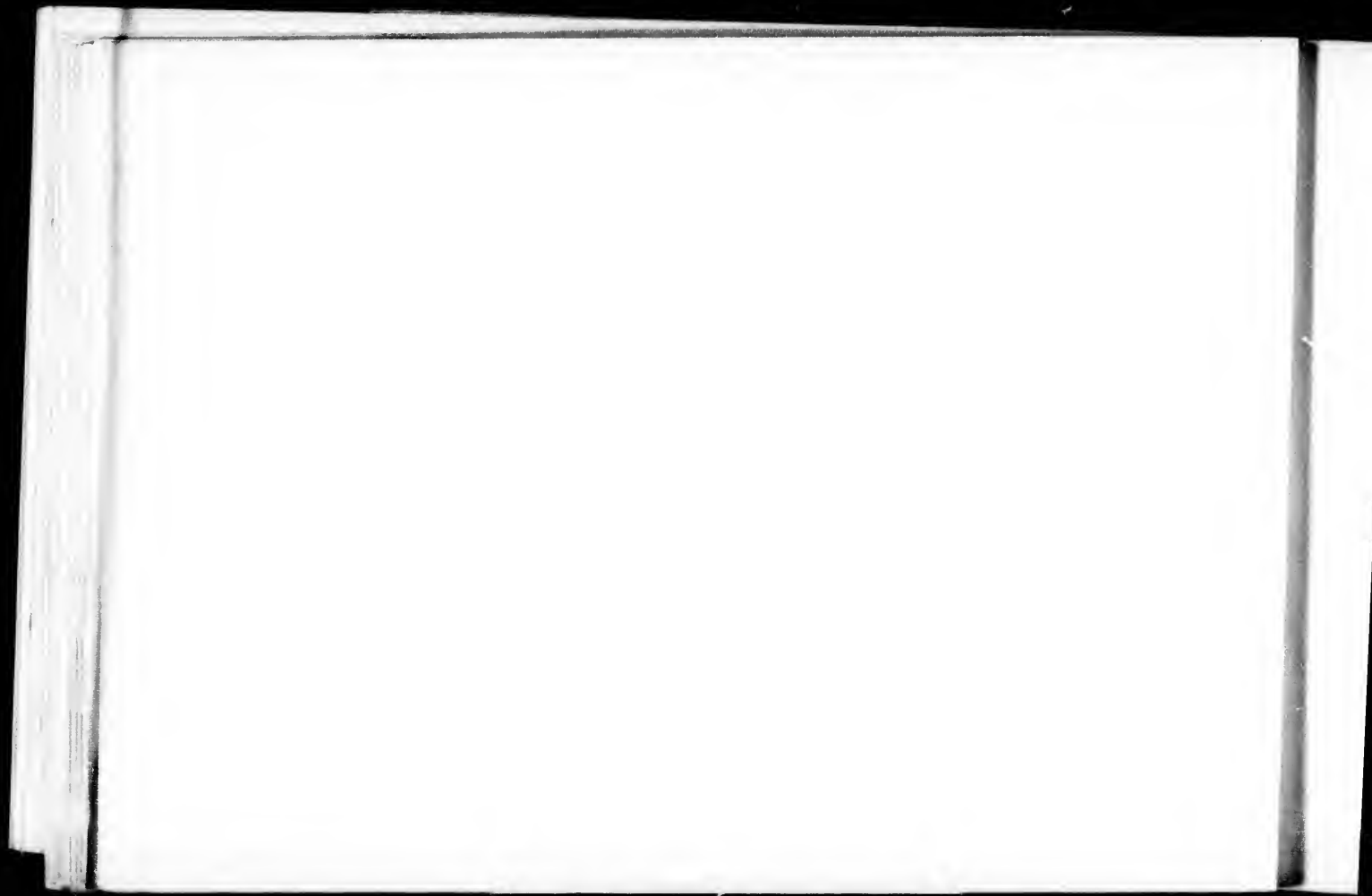




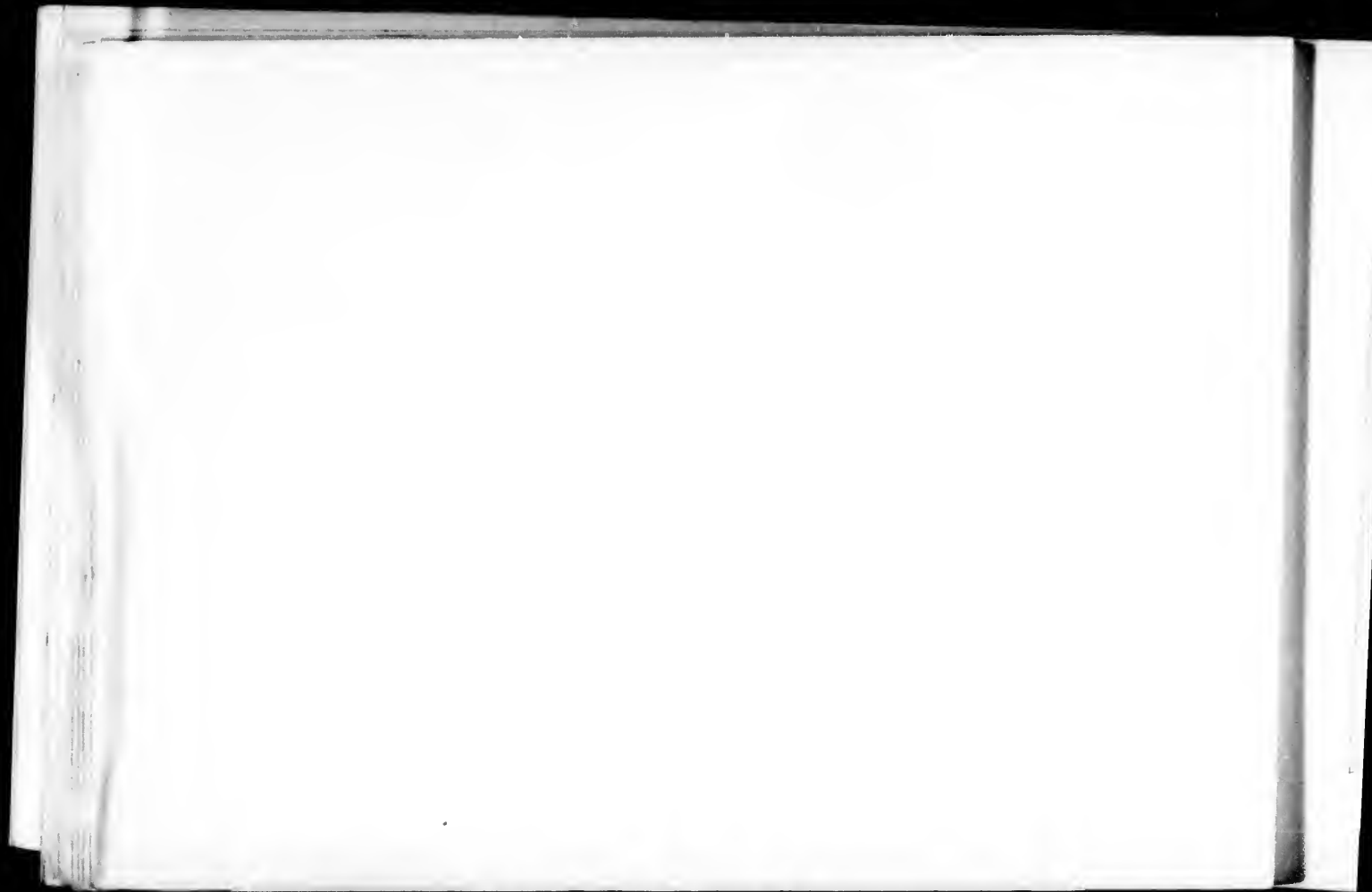
HON GEO E FOSTER, D.C.L. Minister of Finance



HON SIR ADOLPHE P. CARON, K.C.M.G., Minister of Militia and Defence





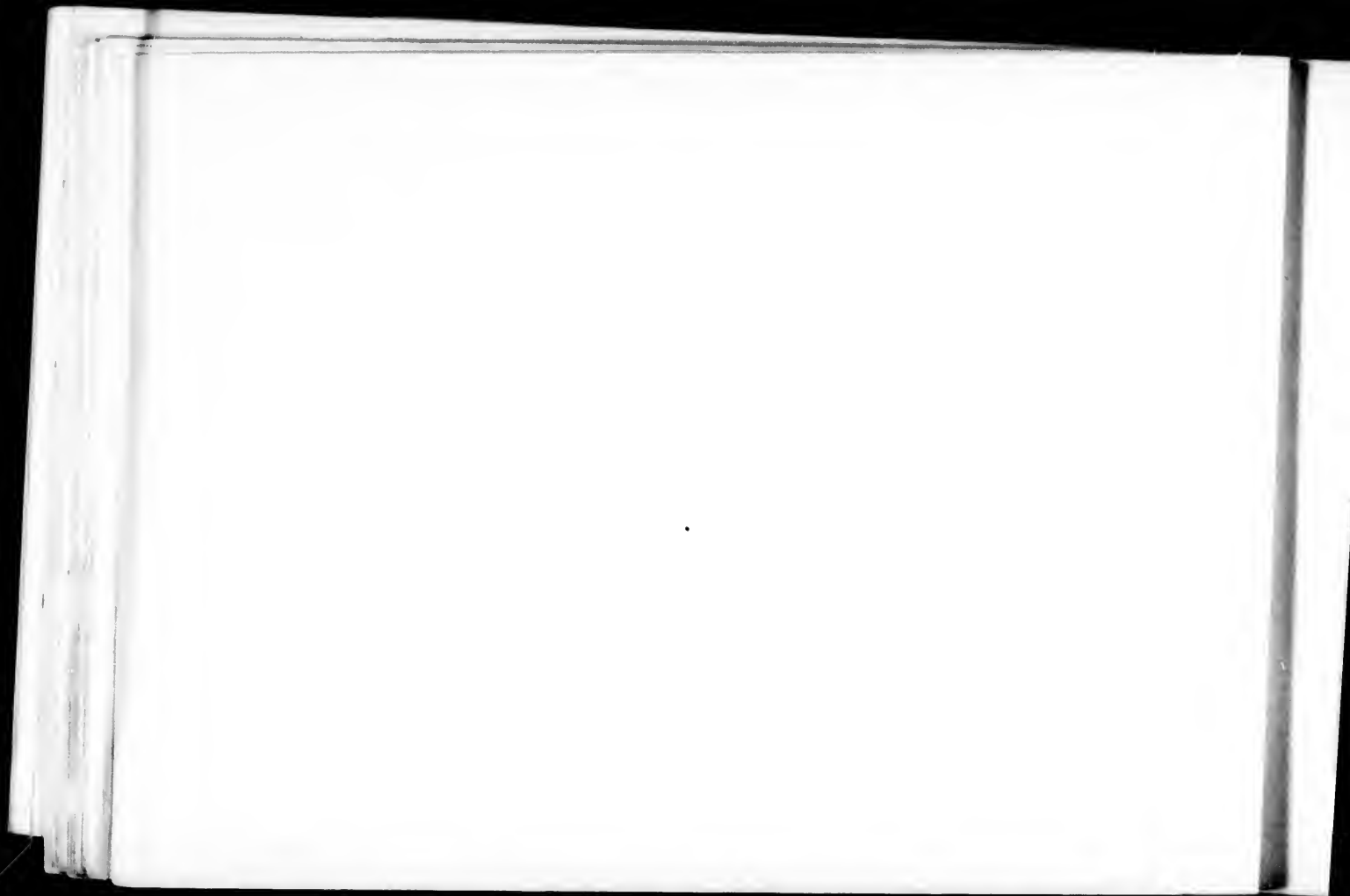




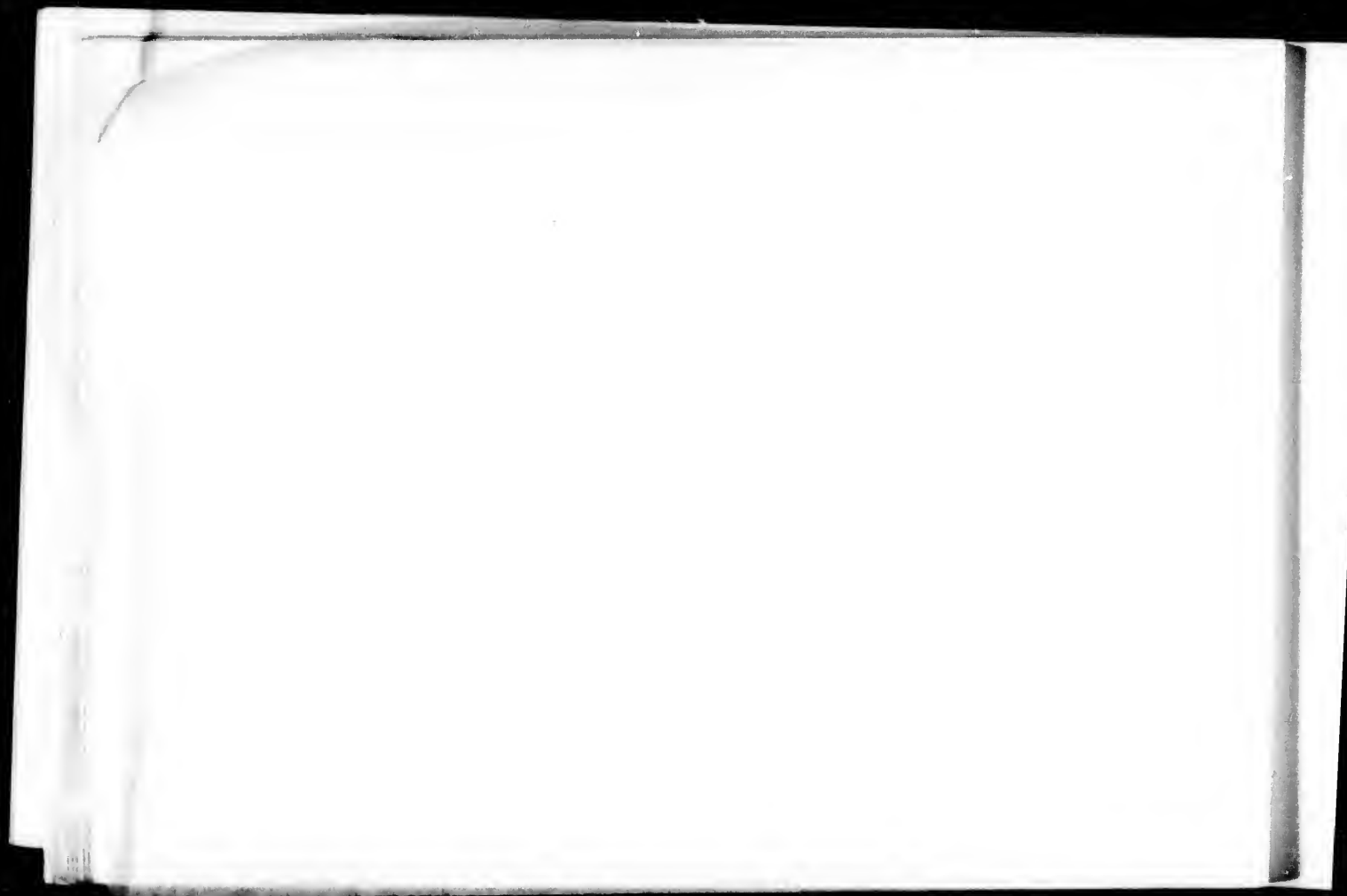
HON. OLIVER MOWAT, Attorney General of the Province of Ontario.



W. R. MEREDITH, M.P., L.L.D., Q.C.





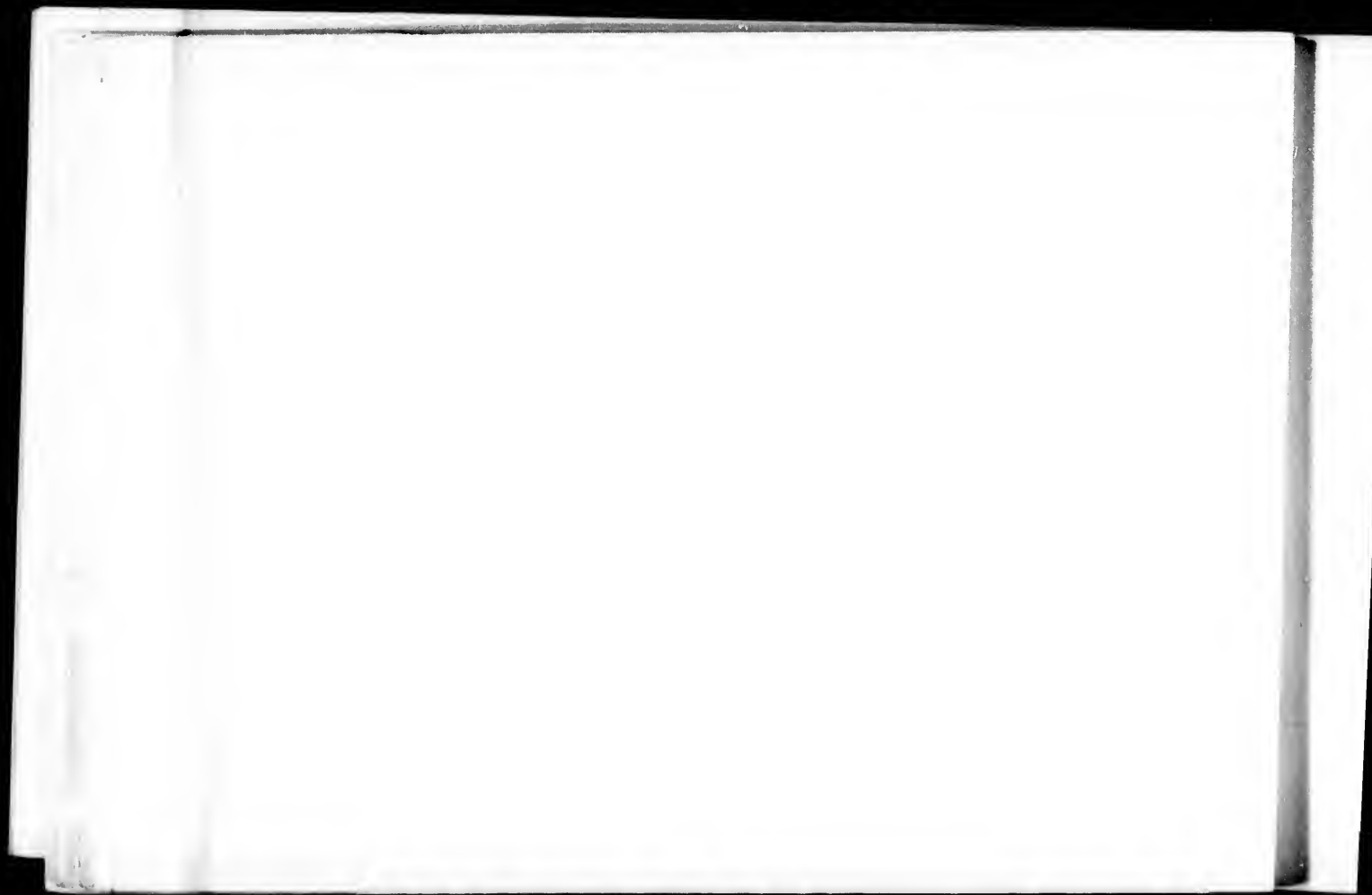




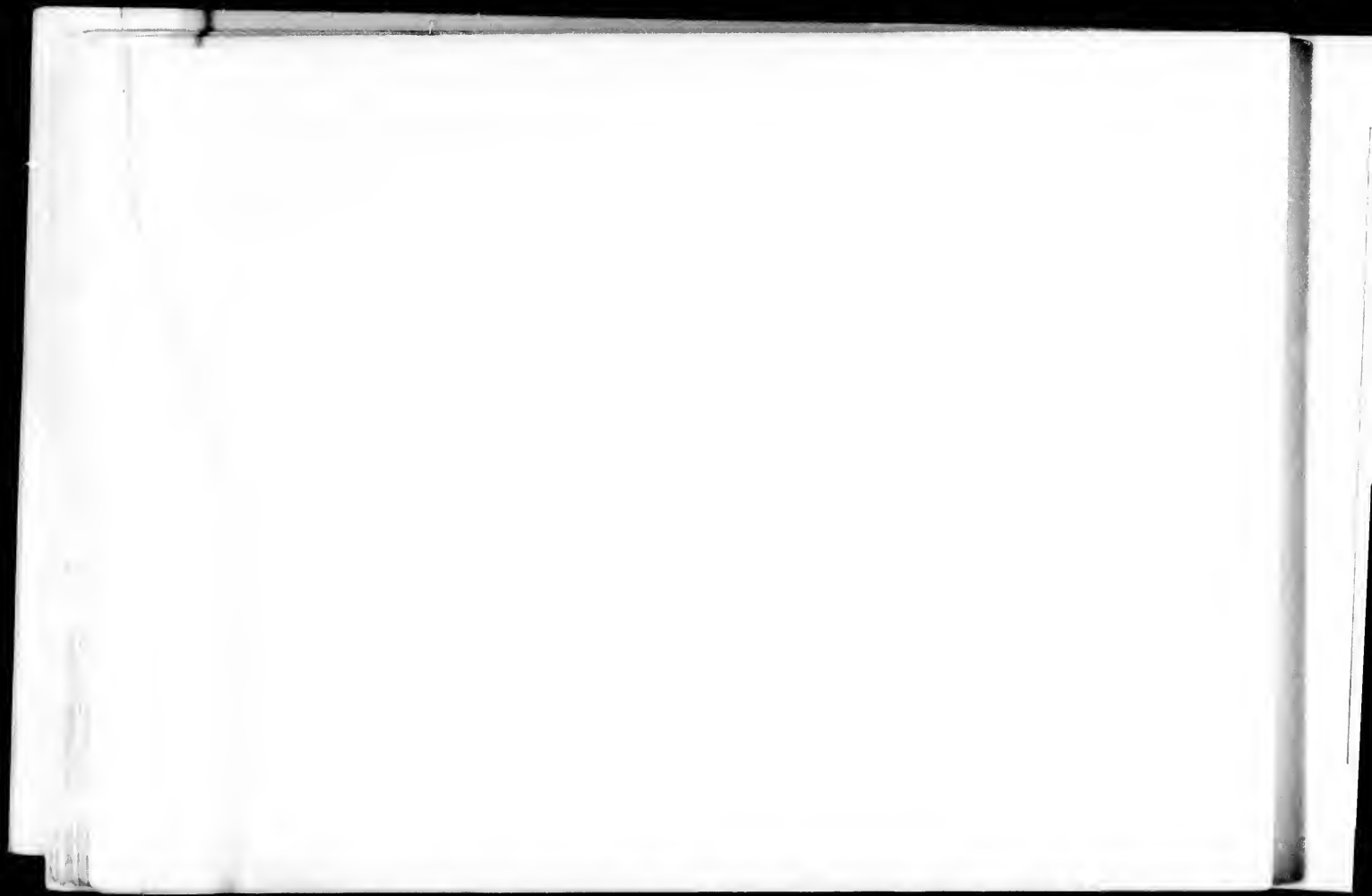
HON HONORE MERCIER, Premier of Quebec.



HON A STURGIS HARDY, M.P., Commissioner of Crown Lands
Province of Ontario.





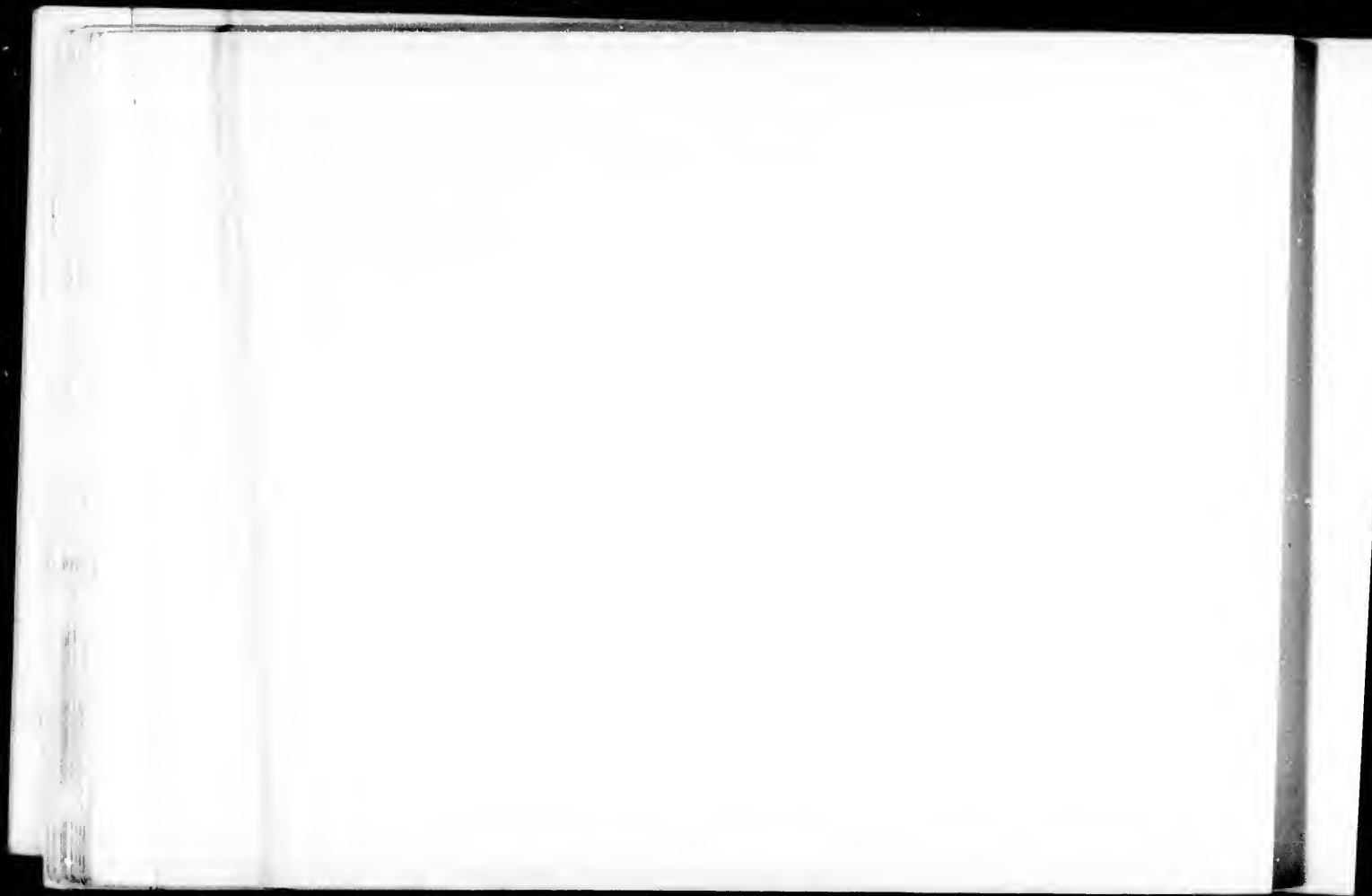




HON JOHN ROBSON, Premier of the Province of British Columbia



HON A G BLAIR, Premier and Attorney General of the Province of
New Brunswick





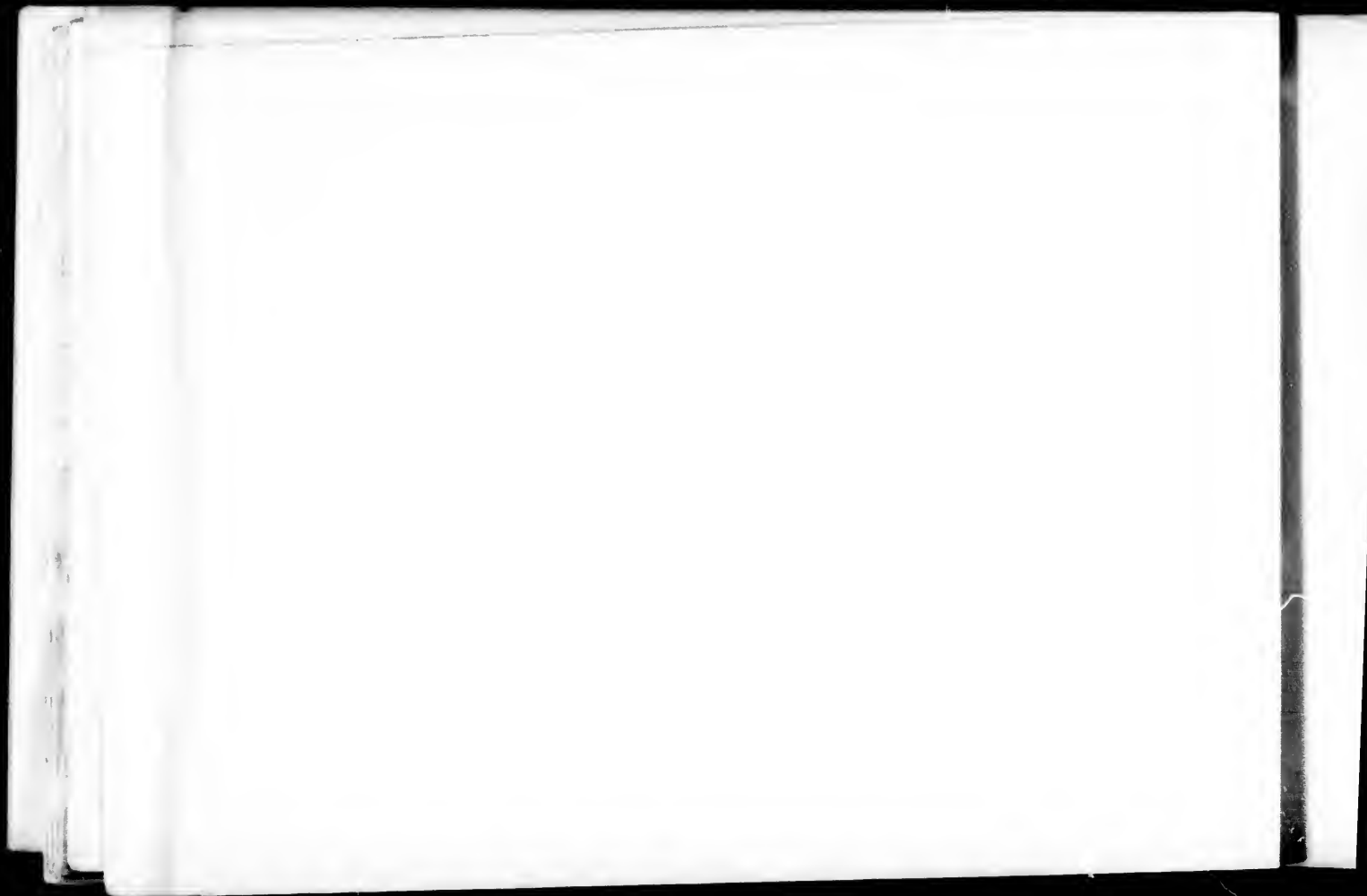




HON. JOSEPH ROYAL, Lieutenant-Governor, N.W.T.



HON. W. S. FIELDING, Provincial Secretary, Nova Scotia





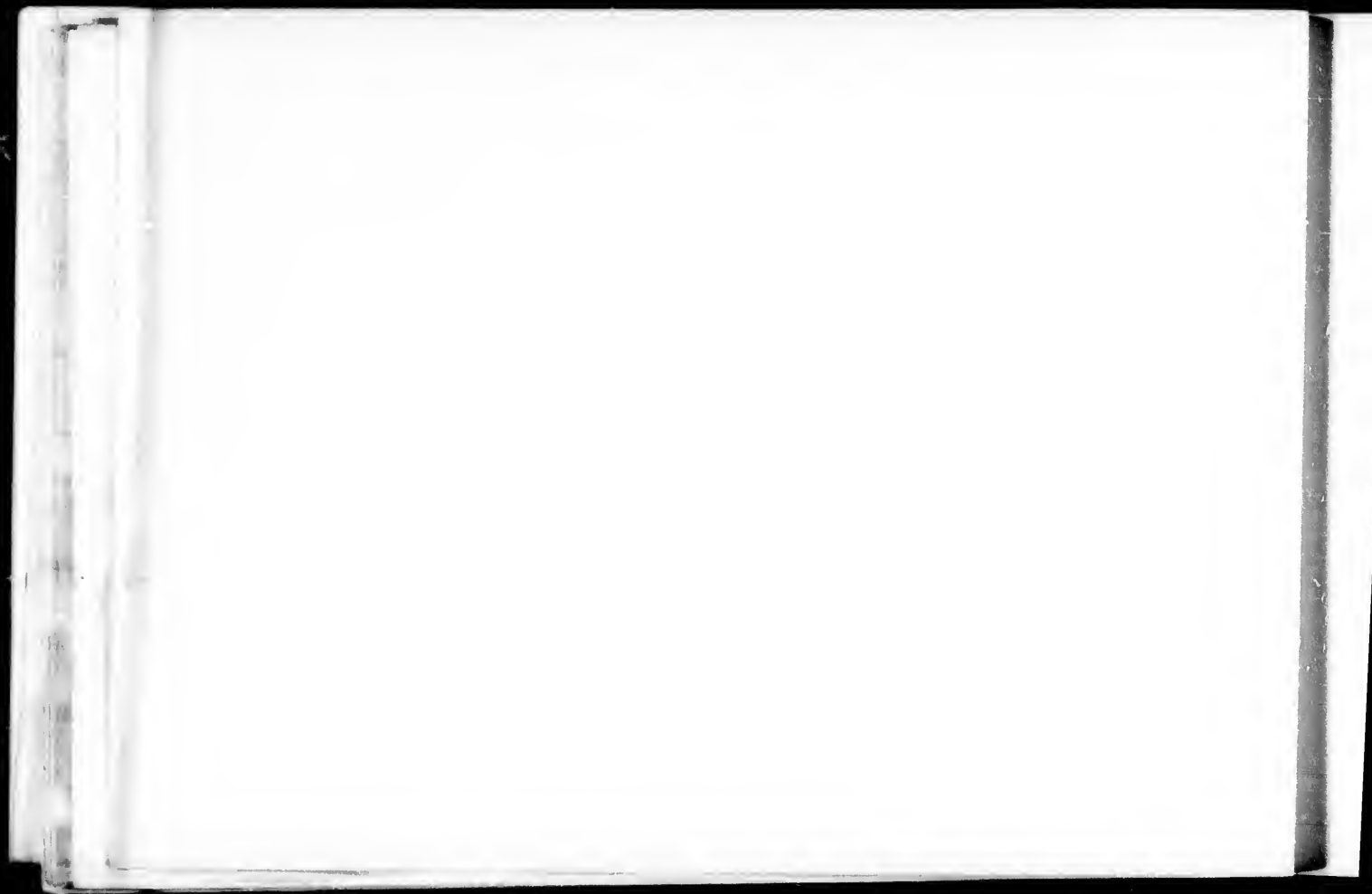


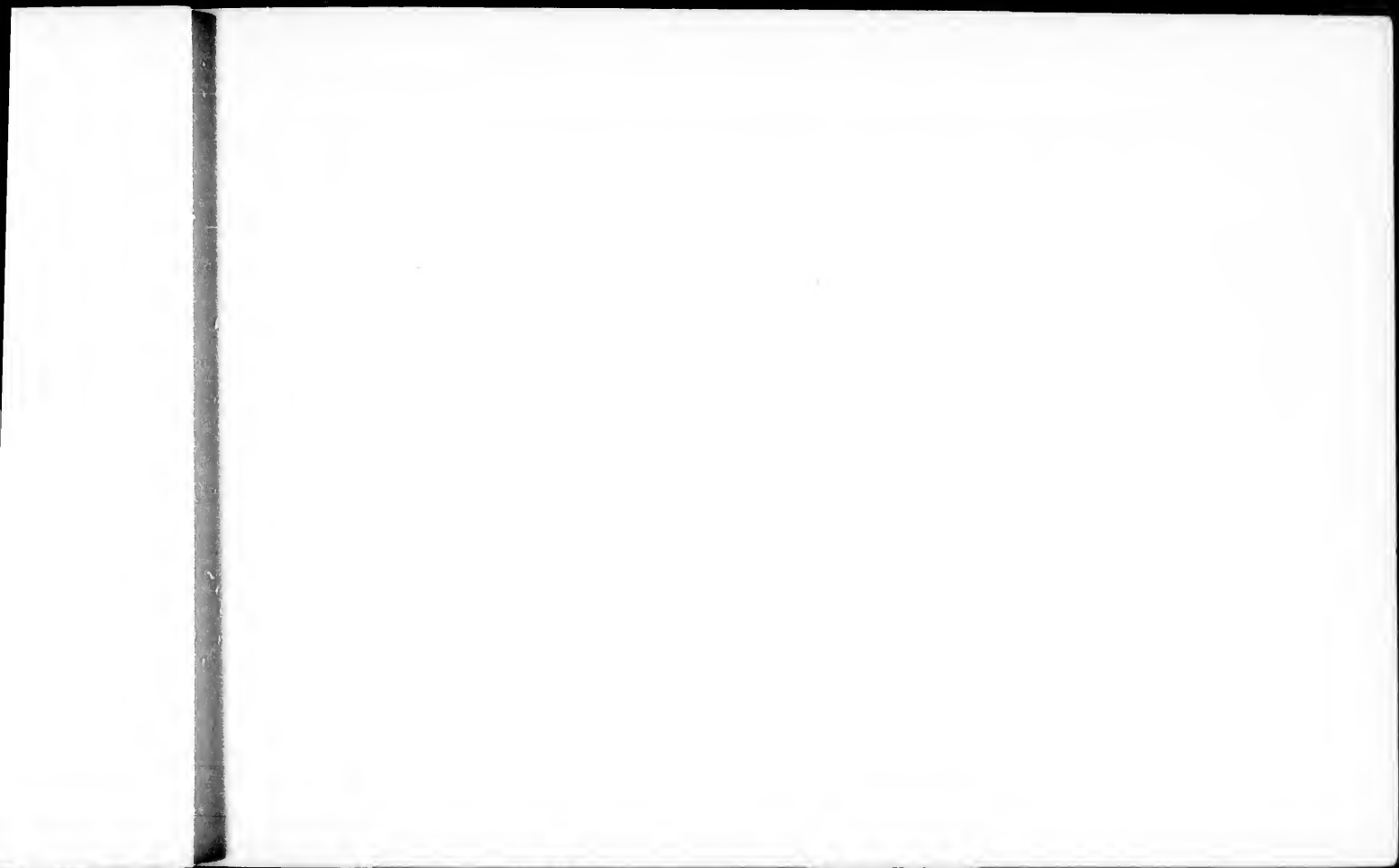


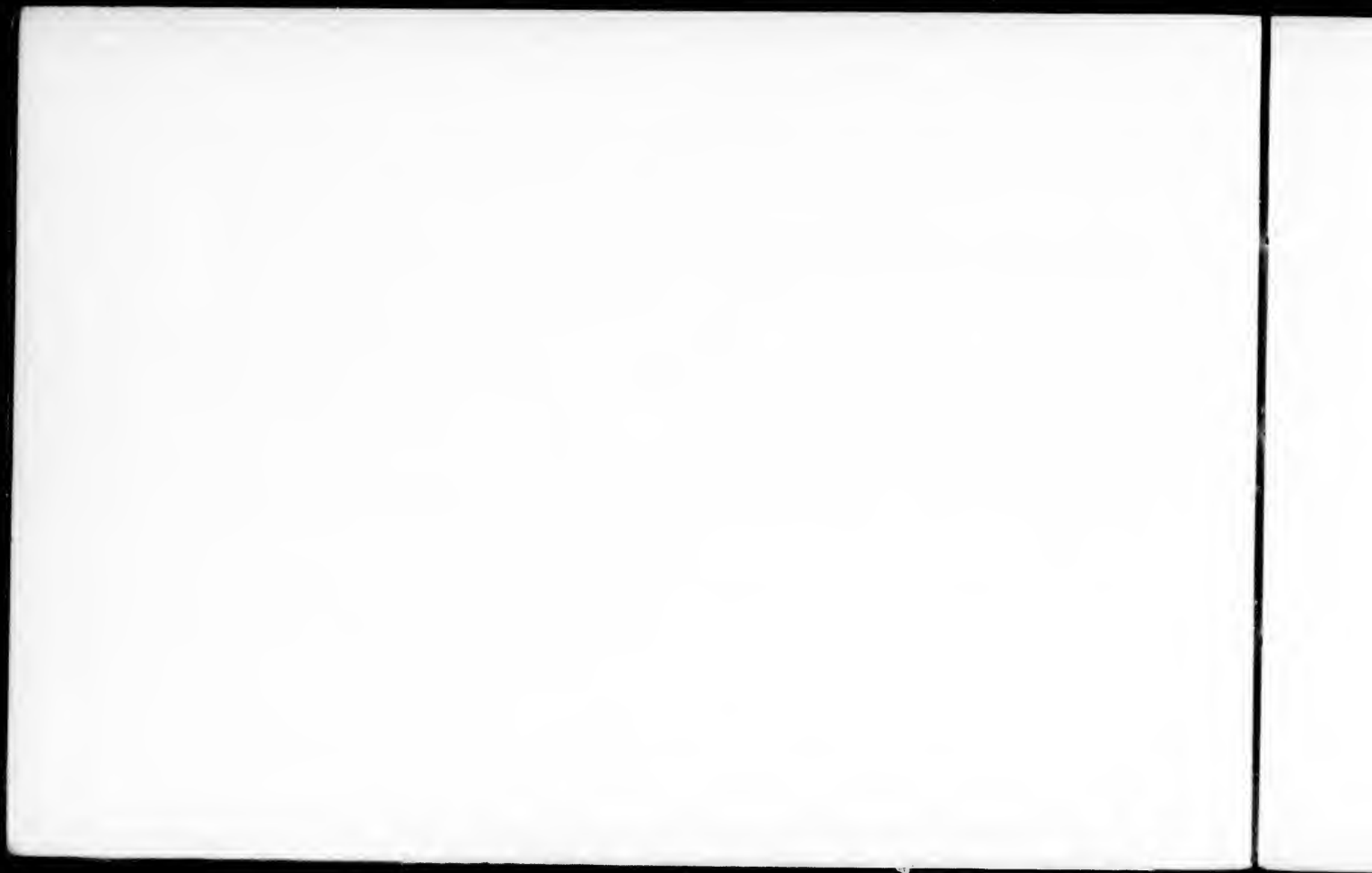
DALTON M-CARTHY M.P., Q.C.

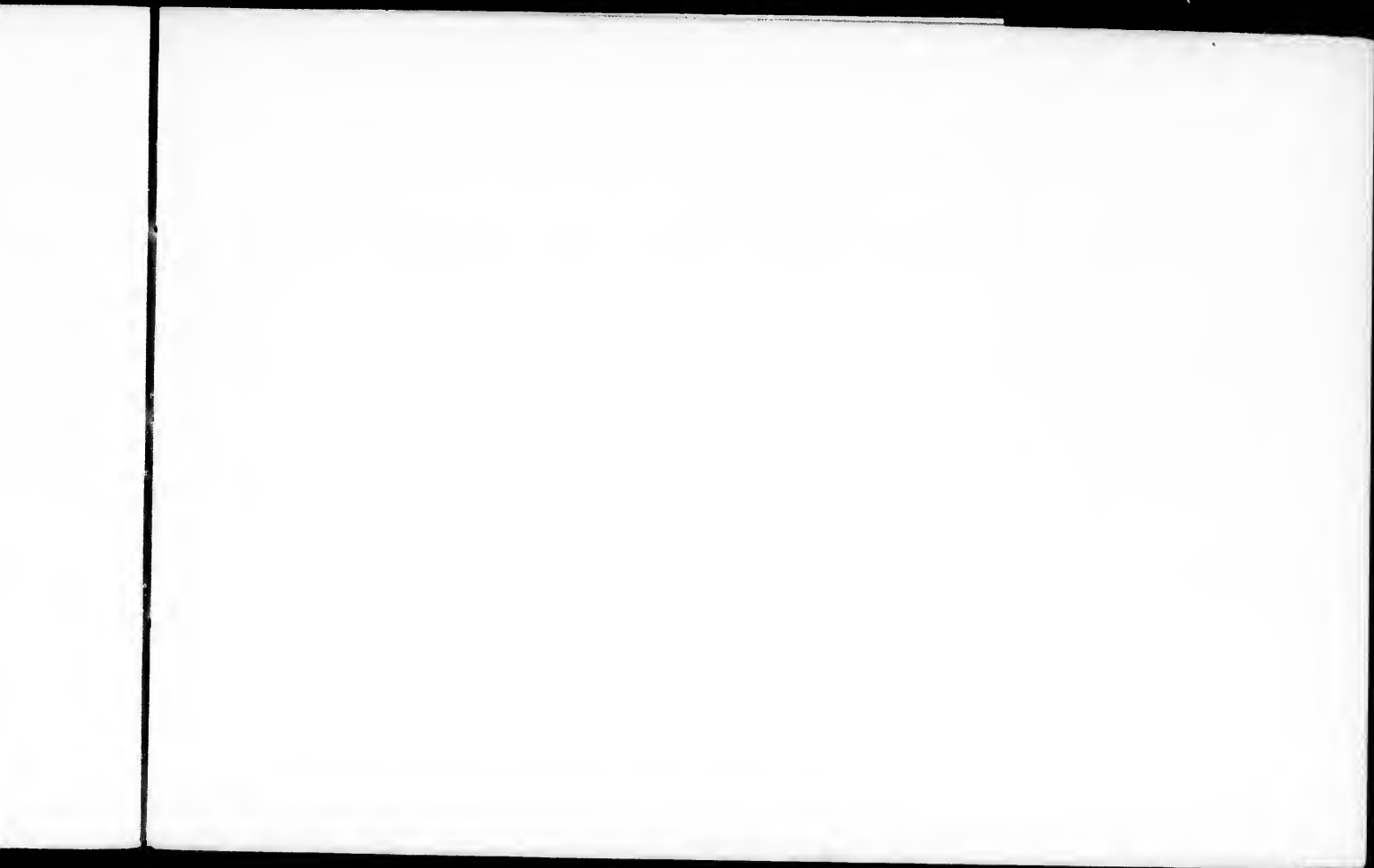


HON THOS GREENWAY, Premier of the Province of Manitoba.









112

113

SpC1
FC
25
S68

BROCK UNIVERSITY
ST. CATHARINES, ONTARIO



LIBRARY

FOR USE IN SPECIAL COLLECTIONS ONLY

Entered according to Act of the Parliament of Canada, in the Office of the Minister
of Agriculture, at Ottawa, in the year One Thousand Eight Hundred
and Ninety, by the News Printing Company,
Limited, of Toronto Ontario.

