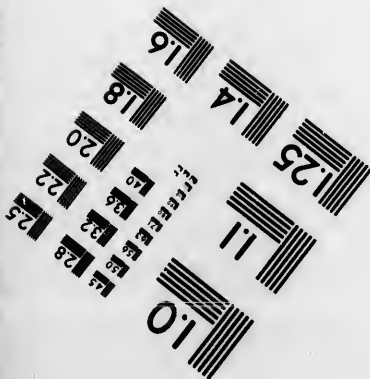
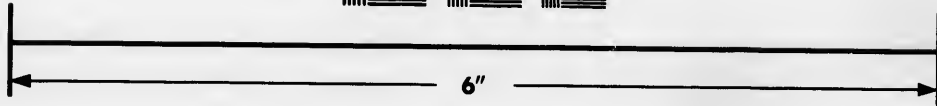
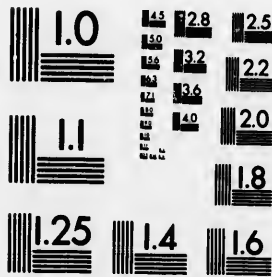


**IMAGE EVALUATION
TEST TARGET (MT-3)**



**Photographic
Sciences
Corporation**

23 WEST MAIN STREET
WEBSTER, N.Y. 14580
(716) 872-4503

**CIHM
Microfiche
Series
(Monographs)**

**ICMH
Collection de
microfiches
(monographies)**



Canadian Institute for Historical Microreproductions / Institut canadien de microreproductions historiques

© 1993

Technical and Bibliographic Notes / Notes techniques et bibliographiques

The Institute has attempted to obtain the best original copy available for filming. Features of this copy which may be bibliographically unique, which may alter any of the images in the reproduction, or which may significantly change the usual method of filming, are checked below.

L'Institut a microfilmé le meilleur exemplaire qu'il lui a été possible de se procurer. Les détails de cet exemplaire qui sont peut-être uniques du point de vue bibliographique, qui peuvent modifier une image reproduite, ou qui peuvent exiger une modification dans la méthode normale de filmage sont indiqués ci-dessous.

Coloured covers/
Couverture de couleur

Coloured pages/
Pages de couleur

Covers damaged/
Couverture endommagée

Pages damaged/
Pages endommagées

Covers restored and/or laminated/
Couverture restaurée et/ou pelliculée

Pages restored and/or laminated/
Pages restaurées et/ou pelliculées

Cover title missing/
Le titre de couverture manque

Pages discoloured, stained or foxed/
Pages décolorées, tachetées ou piquées

Coloured maps/
Cartes géographiques en couleur

Pages detached/
Pages détachées

Coloured ink (i.e. other than blue or black)/
Encre de couleur (i.e. autre que bleue ou noire)

Showthrough/
Transparence

Coloured plates and/or illustrations/
Planches et/ou illustrations en couleur

Quality of print varies/
Qualité inégale de l'impression

Bound with other material/
Relié avec d'autres documents

Continuous pagination/
Pagination continue

Tight binding may cause shadows or distortion along interior margin/
La reliure serrée peut causer de l'ombre ou de la distorsion le long de la marge intérieure

Includes index(es)/
Comprend un (des) index

Title on header taken from: /
Le titre de l'en-tête provient:

Blank leaves added during restoration may appear within the text. Whenever possible, these have been omitted from filming/
Il se peut que certaines pages blanches ajoutées lors d'une restauration apparaissent dans le texte, mais, lorsque cela était possible, ces pages n'ont pas été filmées.

Title page of issue/
Page de titre de la livraison

Caption of issue/
Titre de départ de la livraison

Masthead/
Générique (périodiques) de la livraison

Additional comments: /
Commentaires supplémentaires:

This item is filmed at the reduction ratio checked below /
Ce document est filmé au taux de réduction indiqué ci-dessous.

10X	12X	14X	16X	18X	20X	22X	24X	26X	28X	30X	32X
				✓							

The copy filmed here has been reproduced thanks to the generosity of:

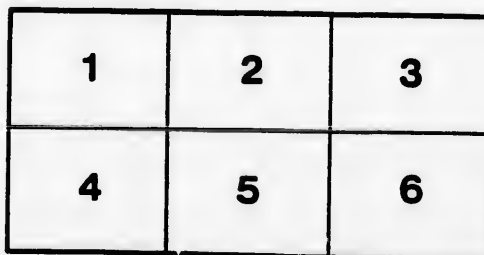
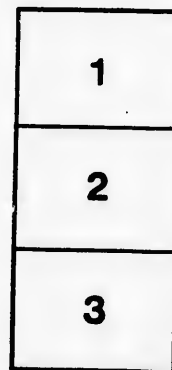
D.B. Weldon Library
University of Western Ontario

The images appearing here are the best quality possible considering the condition and legibility of the original copy and in keeping with the filming contract specifications.

Original copies in printed paper covers are filmed beginning with the front cover and ending on the last page with a printed or illustrated impression, or the back cover when appropriate. All other original copies are filmed beginning on the first page with a printed or illustrated impression, and ending on the last page with a printed or illustrated impression.

The last recorded frame on each microfiche shall contain the symbol \rightarrow (meaning "CONTINUED"), or the symbol ∇ (meaning "END"), whichever applies.

Maps, plates, charts, etc., may be filmed at different reduction ratios. Those too large to be entirely included in one exposure are filmed beginning in the upper left hand corner, left to right and top to bottom, as many frames as required. The following diagrams illustrate the method:



L'exemplaire filmé fut reproduit grâce à la générosité de:

D.B. Weldon Library
University of Western Ontario

Les images suivantes ont été reproduites avec le plus grand soin, compte tenu de la condition et de la netteté de l'exemplaire filmé, et en conformité avec les conditions du contrat de filmage.

Les exemplaires originaux dont la couverture en papier est imprimée sont filmés en commençant par le premier plat et en terminant soit par la dernière page qui comporte une empreinte d'impression ou d'illustration, soit par le second plat, selon le cas. Tous les autres exemplaires originaux sont filmés en commençant par la première page qui comporte une empreinte d'impression ou d'illustration et en terminant par la dernière page qui comporte une telle empreinte.

Un des symboles suivants apparaîtra sur la dernière image de chaque microfiche, selon le cas: le symbole \rightarrow signifie "A SUIVRE", le symbole ∇ signifie "FIN".

Les cartes, planches, tableaux, etc., peuvent être filmés à des taux de réduction différents. Lorsque le document est trop grand pour être reproduit en un seul cliché, il est filmé à partir de l'angle supérieur gauche, de gauche à droite, et de haut en bas, en prenant le nombre d'images nécessaire. Les diagrammes suivants illustrent la méthode.

qu'il
cet
de vue
je
ation
nés

Unpr

DI

KERR, BROWN & CO.,

HAMILTON, C. W.,

Importers & Wholesale Dealers

IN

DRY GOODS AND GROCERIES.

...

STOCK LIST

AND

DIARY FOR 1868.

...

PUBLISHED BY

KERR, BROWN & CO.,

HAMILTON, C. W.

Issac Hour
Beaumontville

MA

We
to k
of th

Grey
"
"
"

Bleac
"

Yarn
Bleac
"
"
"

Stripe
"
"
"

Check
W
"

Bury J
Corset
Sateen
an
Denims
"

Mottled
Drill, L
"
"
"
"

STOCK LIST.

STAPLE DEPARTMENT.

MANCHESTER, GLASGOW, DUNDEE AND AMERICAN GOODS.

We give much attention to this department of our business, so as to keep it supplied, AT ALL SEASONS, with a complete assortment of the following Goods:—

Grey Cottons, 26 to 40 inch.
" " Domestic Make.
" " Maddupollam.
" T Cloth.
" Sheetings, 64 to 72 inch.
Bleached do. Twilled and Plain.
" Shirtings, 27 to 36 inch.
" Long Cloths.
Yarn Bleached Domestic.
Bleached Scotch Hollands.
" Wigan, 33 to 36 inch.
" Croydon Dowlas.
" Derby do.
Striped Jean Shirtings, 27 to 32 in.
" " " American.
" " " Scotch.
" " " English.
Cheeked " " Blue and
White.
" " " Chocolate
and White.
Bury Jeans, Drab, Slate & Browns.
Corset do. do. do. do.
Sateen do. Drab, Slate, Primrose
and Buff.
Denims, Blue.
" Brown.
Mottled Twills, Extra Stout.
Drill, Indigo, English & American.
" Grey Twilled.
" Bleached and Finished.
" Granite.

Ticks, Blue and White.
 " Blue, Red and White.
 " Red and White Striped.
 Canton Flannels, Unbleached.
 " " Bleached.
 American " do.
 Ginghams, Carlisle, soft finish.
 " Scotch.
 " Muslin.
 " German Check.
 Furniture Checks, Blue and White.
 " " Blue & Orange.
 " Striped Blue and White.
 Bengal Stripes, Blue and White.
 " " Blue and Orange.
 Railway " Blue and White.
 " " Red and White.
 Shot Derry, Blue and White.
 " " Blue and Orange.
 " " Book Fold Assorted
 Colours and Mixtures.
 Crash, Blue Bordered.
 " Yarn, Bleached.
 " Russian in Ends.
 Osnaburgs, 24 to 27 inch.
 " Flax, 28 inch.
 Forfar Sheetings, Tow, 31½ to 36
 inch.
 " " Flax, 36 inch.
 Canada Baggings, 40 in., Flax and
 Tow.
 Separator Cloth for Machinery.
 Hessian, Striped, 54 inch.
 " Plain, 54 inch.
 Towels, Blue Bordered, all sizes,
 Twilled and Diaper.
 Towelling, Diaper, Linen & Cotton.
 " Danask.
 " Bleached Cotton Hack-
 aback.
 " Unbleached Linen do.
 " Bleached do. do.
 " do. Dressed do.
 " Glass Cloth, Checked and
 Plain.

C
 V
 C
 W
 V
 4
 4
 4
 4
 4
 C
 B
 L
 F
 R
 U
 "

Un
 Lin
 Tab
 "

Tab
 Tra
 Tub
 Lin
 Cott
 Lin
 Diap
 Sean
 Cott
 "

Wad
 Bed
 "

Hal
 "

Plo
 Cand
 Wrap
 Bag

Cont Canvas.
 Vest Canvas.
 " Wigans, Black.
 Cheese Cloth Yarn, Bleached.
 " " Unbleached.
 Window Holland, White and Buff,
 all widths.
 Venetian and Gothic Blind Cotton,
 all widths.
⁴ Irish Linens, Bleached.
⁴ Undressed Holland.
⁴ Dressed do.
⁴ Grass do. for Mantles.
 Blouse Linens.
 Linen Drill, Bleached.
 Farmers' do.
 Rifle do.
 Union Table Damask, Bleached,
 $\frac{3}{4}$, $\frac{3}{8}$, and $\frac{1}{4}$.
 " " Diced do.
 Union Table Diced, Unbleached.
 Linen " " Bleached and
 Unbleached.
 Table Cloths, Unbleached, Diced
 and Damask, $\frac{3}{4}$ to $\frac{1}{4}$.
 " " Bleached, do. do.
 Table Napkins.
 Tray Cloths.
 Table Covers, Union & All-Wool.
 Linen and Cotton Dowles.
 Cotton Diapers $\frac{5}{8}$ to $\frac{1}{4}$.
 Linen do. do.
 Diaper Clouting.
 Seamless Bags, various qualities.
 Cotton Batting, Fine.
 " " Heavy.
 Wadding, Black and White.
 Bed Cords, Manilla.
 " " Hemp.
 Halter Rope, Jute.
 " " Russian Hemp.
 Plough Line, Jute and Hemp.
 Candle Wick.
 Wrapping Twines.
 Bag Twines, Scotch and Canadian.

ass of Goods.
ditions to the
The great
make it a rule

- 6 Black Demi-Lustre.
- 6 " Alpaca do.
- 6 " Veronas and Serges.
- 6 Colored Circassian Lustres, all shades.
- 4 " " " Figured.
- 6 Striped and Checked "
- 6 Fancy Crossover "
- 6 Fancy Stuffs in great variety.
- 6 Black and White "
- 6 Silk Striped and Checked do.
- 6 Mixed and Mottled Alpacas.
- 6 Scarlet and Black Orleans.
- 6 Scarlet and Black Coburg.
- 6 Mixed Mohairs.
- 6 Checked Challies.
- 6 and 4 Repps.
- 4 " Black and Colored.
- 4 " Figured.
- Fancy Dresses of all kinds in Great variety.
- French De Laines, all colors.
- Black & Colored French Merinoes.
- 3 Scotch Plaids.
- 6 Gala " Scotch.
- 4 " Clan and Fancy.
- 6 German Plaids, Union.
- 6 " " All Wool.
- 6 Striped and Checked Winceys.
- 6 Winceys, all mixtures.
- 4 " in Dresses & Flounced Balmoral Skirts.
- 9 Clan Repps.
- 7 Printed De Laines.
- 8 " Orleans.
- 6 " Cachmeres.
- 3 " "
- 4 " "
- 6 " Coburgs.
- 6 " Princetas.
- 7 " Persian Cloths.
- 8 " "
- Black and Colored Bareges.
- Fancy and Striped "
- " " Silk Warps.
- Norwich Poplins, Plain & Fancy.
- Drab and Mixed Beges.

Striped and Fancy Balzerines.
 Fancy Gauze Crossovers.
 " " Silk Warp.
³/₄ Wove Dress Checks.
 Striped and Checked Mohairs.
 " " Silk and Wool.
 Checked and Striped Alaciums.
 Fancy Repps, Stripes & Crossovers
 Mourning do. in Great variety.
³/₄ Black Italian Cloth.
³/₄ Scarlet " "
³/₄ Black Lasting Union.
³/₄ " " All Wool.
³/₄ Black and Colored Moreens.
³/₄ Union, Furniture and Carriage
 Damasks.
³/₄ All Wool do.
 Alpaca Aprons and Skirts.
³/₈ Printed Jaconet Muslins, Steams
 " " Mudder Colors.
³/₈ Winter Organdie, "
 " Mourning and Fancy.
 Rich Striped do., all colors and
 qualities.
 Black Tape Checked Muslins.
 Fancy Flounced do. Dresses.
 Mourning " "

CINGHAMS.

27 to 30 in. Solid Checks.
 30 in. Fancy Checks.
 Brown & White, & Black & White.
 Do. for Dusters.

DYED GOODS.

Rolled Jaconettes, 20 yard pieces
 " Long Lengths, all colors.
 Rolled Cambries, "
 Twilled Silesias, all col's & qualities
 Black and Drab Casbans.
 Cotton Hollands, in Black, Drab
 and Slate.
 Plain Sleeve Linings.
 Printed "
 Black and Colored Cotton Velvets.
 Printed " "

4 H
 4 D
 4 U
 4
 4
 4 2
 4
 4
 4 3
 4 Brus
 4 Prin
 4 Stain
 4 Floc
 4 Tabl
 "
 W
 West
 York
 Germ
 York
 "
 "
 "
 Drab
 Grey,
 "
 Black
 Fancy
 "
 "
 Mantl
 F
 Fancy
 "
 Pilots
 "
 Beave
 "
 Peters
 Mosco
 Sealsk

CARPETS.

4 Hemp.
 4 Dutch.
 4 Union, Fine.
 4 " Super.
 4 2 ply Wool, Fine.
 4 " Super.
 4 3 ply "
 4 Brussels.
 Printed Druggett.
 Stair Carpet.
 Floor Oil Cloth, all widths.
 Table Oil Baizes.
 " in Woods and Bronzes.

WOOLLEN DEPARTMENT.

West of England Broad Blacks,
 Wool Dye.
 Yorkshire " "
 " " Piece Dyed.
 " " Cotton Warps.
 German " All Wool.
 Yorkshire " Brown & Blue
 " All Wools & Cotton Warps
 " Fancy Mixtures.
 " Black Milled.
 Drab and Colored Carriage Cloths
 Grey, Brown and Fancy Meltons,
 Dressed and Undressed.
 Black Venetians and Sataras.
 Fancy Coatings.
 " " Silk Mixtures.
 " " Mohair do.
 Mantle Cloths, Black, Brown and
 Fancy Mixtures.
 Fancy Cloakings.
 " " Union and All Wool
 Pilots, all Colors and Qualities.
 " in Unions and All Wool.
 Beavers, " "
 " in Various Mixtures.
 Petershams, " "
 Moscow Beavers, heavy, All Wool
 Sealskins, "

Flushings, Blue and Brown, Cotton Warp.
⁶/₄ Woollen Linings, Plain & Check'd
³/₄ Green Billiard Cloth.
 Black Doeskins, Wool & Piece Dye
 " " Cotton Warp.
 Black Cassimeres, All Wool.
 Steel and Oxford Doeskins.
 Fancy do., Latest Styles.
 Fancy Deerskins.
 Black ..
 German and West of England do.
 Buckskins, Black and Fancy.
 Sataras, " "
 Double Mixed Wool Cord.
 Drab Bedford ..
 Mixed Cassinets.
 Wool Tweeds, Checks & Mixtures.
 Milled " "
 Shepherd .. All Wool.
 " " Cotton Warp.
 Fancy " in Great variety.
 " " Bordered.
 Scotch Tweeds, all qualities.
 West of England do.
 Silk Mixt do.
 Cheviot and Angola do.
 Union Tweeds, Double Widths.
³/₄ and ⁶/₄ Union Twills.
⁶/₄ Fancy Coating and Cloaking.
⁶/₄ Tweeds, Union and All Wool.
 Clan Tartan Tweeds.
 Checked Cotton Drills.
 Granite Mixed "
 Rochfort Corded ..
 Yeoman's Ribbed "
 Hunter's Corded "
 Shepherd Checked Cotton Drills.
 Drab Moleskins.
 Miller's "
³/₄ Cotton Cords.
³/₄ " Corduroy.
⁴/₄ Kentucky Jeans, Mixed.
 " " Checked & Fancy
³/₄ Mixed Alpaca Coatings.

³/₄ M
³/₄ M
 Silk
 Fanc
 Black
 " "
 Mix

Black
 " "
 Fanc
 Fanc
 White
 Black

C
 Union
 S
 All W
 Singl

Merin
 Fine
 Heavy
 Light
 Cadet
 Oxford
 Cadet
 Heavy
 Black
 Americ
 Mixed
 Printed
 Black

We pa
 Friends
 ture. I
 that it is
 that as
 should g
 manufact
 have alw
 in our p
 have mac
 among ou
 import fr
 that the C
 we practi
 and sou

³ Mottled Crotons.
⁴ Mixed Mohair.
 Silk Warp "
 Fancy Silk Alpaca do.
 Black Russell Cord.
 " Ribbed Alpaca.
 Mixed Gambroons and Mogadores

VESTINGS.

Black Satin Vestings.
 " Corded Silk do.
 Fancy Silk and Satin do.
 Fancy Velvet do.
 White and Fancy Quilt do.
 Black and Brown Collar Velvet.

CANADIAN WOOLLENS.

Union Tweeds, Twill, Fancy and
 Stripes.
 All Wool do. in great variety.
 Single and Double Warp do., All
 Wool.
 Merino Wool do.
 Fine Light Etoffe.
 Heavy "
 Light Grey "
 Cadet "
 Oxford & Vermont Fulled Cloths.
 Cadet and Brown Satinets.
 Heavy Canada Grey do.
 Black Satinets, all qualities.
 American do., all colors.
 Mixed and Oxford do.
 Printed do.
 Black Cashmerettes.

We particularly call the attention of our
 Friends to the above of domestic manufac-
 ture. It must be evident to every one
 that it is to the advantage of the country
 that as little of our money as possible
 should go into the hands of the Foreign
 manufacturer; and with this view, we
 have always given all the encouragement
 in our power to home productions, and
 have made every effort to introduce them
 among our customers, ceasing entirely to
 import from England or elsewhere goods
 that the Canadian can at all come near, as
 we practically know that, taking strength
 and soundness as the criterion, they are

unequalled by any Foreign manufacture at the price; and in point of style are coming every year nearer the standard of the old production, and many of the goods enumerated above will compare in style favourably with the bulk of Scotch Tweeds.

FLANNELS, &C.

- $\frac{7}{8}$ and $\frac{1}{4}$ Scarlet Flannel, Finé nude
 " " Heavy.
 English, Canadian and American.
 Twilled do.
 $\frac{7}{8}$ White do., Lancashire.
 " " Medium.
 " " Saxony.
 " " Fine Electoral.
 Indigo Blue do.
 Twilled do. do.
 Orange do. $\frac{1}{2}$
 Blue Serge Union.
 White do. do.
 $\frac{3}{4}$ Union Plaiding.
 $\frac{3}{4}$ All Wool do.
 Pink, Sky, Rose, Scarlet, Saxony
 Flannels.
 Mixed Twilled do.
 Fine Fancy Shirting do., in great
 variety.
 Printed Salisbury do.
 American do.
 Green Baize, various widths.
 40 in. Scotch Linseys, Blooms and
 Stripes.
 Grey and Brown English do.
 40 in. Striped Druggetting.
 40 in. Checked do.
 Printed do.
 Canadian Flannels, Plain & Twil-
 led, Union and All Wool.

BLANKETS, &C.

- $\frac{8}{4}$ and $\frac{9}{8}$ Union Mackinaw Blankets.
 10-4th & 11-4th Mackinaw, All
 Wool.
 Witney Blankets, all sizes and
 qualities.

Cam

Unic
 Wool
 Diap
 Arm
 Bord
 Brow

PL

Jacco
 Nani
 Mull
 India
 Swis
 Book
 India
 Swis
 Black
 Color
 Fancy
 do.
 Bisho
 Tarlat
 White
 Color
 Spotte
 Color
 Check
 Windo
 "

PLA

Jacco
 Tape C
 Swiss
 Hair C
 Embro
 Brillian

Best B
 White
 Sprigg
 Silk do

Canadian Blankets, from the Best
Makers.

Union Horse Blankets.

Woollen do.

Diaper Horse Rugs.

Army do.

Bordered do.

Brown and Fawn Extra do.

PLAIN MUSLINS, SCOTCH.

Jaconets.

Naniseeks.

Mulls.

India Mulls.

Swiss do.

Book.

India Book.

Swiss do.

Black do.

Colored do.

Fancy Spotted do.

do. do. Jaconets.

Bishops' Lawn.

Tarlatan.

White Tarlatan.

Colored do.

Spotted do.

Colored and White Lenos.

Checked do.

Window Muslin, Scotch and Swiss

“ “ Curtains do.

“ Lace do.

PLAIN MUSLINS, ENGLISH.

Jaconets.

Tape Checks.

Swiss do.

Hair Cord.

Embroidery Cambric.

Brilliantes.

NETS.

Best Bobin Net.

White do. do.

Sprigged do. in ends, Bl'k & White

Silk do.

Black and White Milliners' Net.
 Mechlin do.
 Illusion Blond.
 Queen's do.
 Paris do.
 Cambray's Black and White.
 Figured Silk Net do. do.

LACES AND EDGINGS.

Tattings.
 Egyptian Edgings.
 Saxony do.
 Wove Thread do.
 American do.
 Crochet do.
 Edgings assorted in Boxes.
 1/2 Laces in the above.
 Border Laces in every variety.
 White Whisker Blond.
 Grey do. do.
 Best do. do.
 Presburg do. do.
 Best White and Colored Silk Lace

SEWED GOODS.

Muslin Collars on Jaconet.
 " " Book.
 " Sleeves do.
 Sleeves and Collars in Sets.
 Sewed Muslin Bodies.
 " " Robes.
 " " Edging & Insertion.
 " " Flouncing.
 Stamped Muslin for Working.

CAPE.

Hat Cape, 8 and 10 inch.
 1/2 Folded.
 1/4 do.
 5/8 do.
 6/8 do.
 Rolled.
 Areophanes.
 Cape Laisse.

STAYS.

Drab Jean.
 White do.

White
 Nursi
 Couti
 Plain
 Cord
 Work
 Embr

Scotel

"
 Irish I
 Embr
 Initial
 Printe
 Madde
 Blue a
 Orange
 Fancy
 Turkey
 Cochin
 Imitati
 Silk
 Printed
 Pongee
 Crimso
 White

NORW

32 to 36

"
 "
 "

CENTS

Black B
 " Ba
 " Ita
 " Du
 Fancy Si
 Gingham
 Printed I
 Fancy Si

White Satin.
 Nursing French.
 Coutille do.
 Plain Muslin Skirts.
 Corded do. do.
 Work do. do.
 Embroidered do.

HANDKERCHIEFS.

Scotch Cambric, $\frac{3}{4}$, $\frac{5}{8}$, $\frac{7}{8}$.
 " " Printed Borders.
 Irish Lawn, $\frac{3}{4}$, $\frac{5}{8}$, $\frac{7}{8}$.
 Embroidered Corners.
 Initial do.
 Printed Cotton Bandanas.
 Madder in great variety.
 Blue and White.
 Orange, Blue and White.
 Fancy Turkey.
 Turkey Cloth, Plain and Twilled.
 Cochineal Bandanas.
 Imitation Silk.
 Silk do.
 Printed Spun do.
 Pongee Chinese and French do.
 Crimson Pongee, Figured & Plain.
 White do. do.

NORWICH HANDKERCHIEFS,

32 to 36 inch Blue.
 " " Black.
 " " Claret.
 " " Drab.
 " " Brown.

GENTS NECK HANDKERCHIEFS

Black Brussels.
 " Bandanas.
 " Italian.
 " Ducapes.
 Fancy Silk.
 Gingham.
 Printed Muslin.
 Fancy Silk Neck Ties.

Black Glace Neck Ties.

- " Ariel do.
 " Beaufort do.
 " Opera do.
 " Albert do.
 " Eaton do.

SHIRT COLLARS.

- Albert.
 " 2 fold.
 " 3 do.
 Piccadilly.
 " 2 do.
 " 3 do.
 Beaufort 2 do.
 " 3 do.
 West End 2 do.
 " 3 do.
 Regent 2 do.
 " 3 do.
 Regent Corded and Embroidered.
 " Double Corded.
 " Fancy.
 Belgian.
 Parisian.
 Young England.
 Sydenham.
 Kensington.
 Gladstone.
 Pic Nic.
 The "Gem."
 The "Thormanby."
 The "Star."
 Prince of Wales.
 Military.
 Velamen.
 Universal.
 The Times.
 Emperor.
 Reversible.
 Square Naval.
 Round do.
 " Eaton.
 Suitable Styles as introduced.
 Boys' Collars.

Fan
 " "
 Wh
 " "
 Fan

Prim
 " "

Blac
 Dra
 Prim
 Mixe
 Broc
 Blac
 " "

Fille
 " "

Wool
 " "

Wool
 Cash
 Plain
 " "

Clan
 I
 Gents
 a

Printe
 Thiber
 Cobur
 Wooll

SHIRTS.

Fancy Regatta.
 " French Printed.
 " Wove.
 White Dressed Shirts, (all qualities
 " Linen Fronts for Insertion.
 Fancy do. do.

SHAWLS, &C.

Printed Cashmere, Squares.
 " " Long.
 Black " Squares.
 Drabs, " do.
 Printed Barege, Long.
 Mixed do do.
 Brocaded Silk do.
 Black " Plain.
 " Satin.
 Filled Paisley Squares.
 " " Long.
 Woollen Shawls, Square.
 " " Long.
 " " Round Corners.
 Woollen Handkerchiefs, all kinds.
 Cashmeres, Printed.
 Plain Black Indiana.
 " " Fancy Corners.
 Clan and Faney Woollen Shawls,
 Long and Square.
 Gents' Woollen Plaids, Scotch
 and Canadian.

MUFFLERS.

Printed Cashmere.
 Thibet.
 Coburg.
 Woollen.

HOSIERY.

We always keep a very Complete Stock of Goods *for all seasons* in this Department, and confidently recommend it to our correspondents as being now as full as usual. Of course, neither in this nor any other Department do we pretend to give a complete list of every item therein. Our purpose is more to give our friends an idea of the general completeness of the assortment than a list of everything we keep.

Womens', and O. S. Womens',	
White Cotton Hose.	
" "	Brown do.
" "	Slate do.
" "	Black do.
" "	Grey Dressed do.
" "	" Rough do.
" "	White Lace do.
" "	" Lisle do.
" "	Embroidered do.
" "	Silk do.
Mens' Grey Cotton $\frac{1}{2}$ hose (English)	
" "	(German)
" Brown	do.
" "	English.
" Bleached	"
" Striped and Fancy	do.
Girls' Grey Cotton Hose.	
" White	do.
" Brown	do.
" Black	do.
" Fancy Striped	do.
" White Lisle	do.
Children's White Cotton Socks.	
" "	Lace do.
" "	Fancy Striped do.
" "	Tartan do.
Youths' Grey Cotton Socks.	
" White	do.
" Brown	do.
" Striped	do.
Women's White Merino Hose.	
" Grey	do do.
Men's	do $\frac{1}{2}$ hose.
" Fancy Striped	do.

Children's White and Grey Merino Socks.

Girls' " " Hose.

Women's Black Worsted Hose.

" White Lamb's Wool Hose.

O. S. " " " "

" Blue Grey " " "

" Dark " " "

O. S. Shetland Hose.

Girls' White L. W. Hose, ass'd sizes.

" Grey " do

Boys' do. Socks do.

" White do do.

Children's do. do. do.

" Grey do. do.

" Tartan and Fancy do.

Girls' Fancy Striped Wool Hose, do

Women's do. do.

Men's do. do.

Men's L. W. Undershirts (Scotch)

" " (English)

" " (Canadian.)

" Drawers in the above.

Women's L. W. Underclothing.

" Merino do.

Men's Spun Shirts and Drawers.

" Merino Shirts.

" " Drawers.

Women's Merino Underclothing.

Men's Bleached Cotton Shirts.

" Brown do. do.

" " do. Drawers.

CLOVES.

Habits, & O. S. Habits, Col'd Cotton

" " White do.

" " Blue do.

" " Fancy Backs do.

" " Colored Lisle.

" " White.

" " Colored Spun.

" " Black do.

" " Pearl do.

" " Colored Plates.

" " Black do.

" " Pearl do.

Habits, Black Taffeta		
"	Colored	do.
"	Black Lace Mitts,	$\frac{1}{2}$ Fingers.
"	White	do. do.
"	Colored	do. do.
"	Black	do. Mitts.
Misses' and Children's Colored Cotton Gloves.		
"	"	Black.
"	"	White do.
Misses' and Children's do. Lisle.		
"	"	Black do.
"	"	Colored do.
"	"	" Silk.
"	"	Black do.
"	"	White do.
Men's Black Cotton Gloves.		
"	White	do. do.
"	Colored	do. do.
"	Black Lisle	do. do.
"	White	do. do.
"	Colored	do. do.
"	"	Berlin do.
"	Black	do. do.
"	Colored Taffeta.	
"	"	Silk.
"	Black	do.
Habits and O. S. Habits Colored Cashmere Gloves.		
"	"	Fancy Gloves.
"	"	Oxford do.
"	"	Black do.
"	"	Colored Ringwood.
"	"	" Gauntlets.
"	"	" Cloth do.
Misses Colored Cashmere Gloves, all Numbers.		
"	Fancy	do. do.
"	Black	do. do.
"	Oxford	do. do.
"	Ringwood	do. do.
Men's Colored Cashmere Gloves.		
"	Oxford	do. do.
"	Colored Ringwood	do. do.
"	"	Cloth do.

Men's Col'd Cloth Fancy Tops.
 " " " Tweed.
 " " " Plush Lined.
 Boys' Colored Cashmere Gloves.
 " " Aberdeen do.
 " " Knitted do.
 " " Ringwood do.
 Kid Gloves.
 Habits White (French & English.)
 " Black do. do.
 " Colored do. do.
 " " Gauntlets.
 Men's " Kid Gloves.
 " Black.
 " Lamb Lined.
 Habit do. do.
 Men's French Buck (Lined).
 " Canadian do. do.
 " American do. do.
 " Buck Mitts do.
 Boys " " and Gloves.

FANCY HOSIERY.

Children's Wool Hoods.
 " Cashmere do.
 " Wool Gaiters.
 Ladies' do. do.
 Children's do. Bootees.
 " do. Bootakins.
 Misses do. Sleeves.
 " do. Armlets.
 Ladies' do. do.
 " do. Sleeves.
 " do. Gauntlets.
 " do. Head Dresses.
 " do. Scarfs.
 " Chenille do.
 Boys' Shaded Cravats.
 Boys' Scarlet Cravats.
 Men's Scarlet Cravats.
 " Shaded do.
 " Heavy Knitted do.
 Men's Cotton Night-Caps.
 " " Scarlet do.
 " Wool do.

Hair Nets.

Chenille.

Mohair.

Silk Braids, Black and Fancy.

“ “ Trimmed.

UMBRELLAS.

Square Cane Ribbs, 28-30 inch.

“ “ Wheel Tops, do.

“ “ Super Cloth.

“ Bone 30 inch.

“ Heavy Blue.

Boys' Fancy & Enam'd Cloth Belts.

“ “ Leather do. (English)

“ “ “ do. (American)

Men's Calf Belts.

Ladies' Fancy Silk do.

“ Elastic do.

“ Leather do.

Braces.

Boys' Chintz.

Youths' do.

Men's do.

“ Knitted.

“ Worsted.

Boys' India Rubber Braces.

Men's “ Leather Ends.

“ “ Cloth.

“ Cantab.

“ French Buckskin.

Elastic Garters.

“ Wristlets.

“ Cord.

“ Web.

Ladies' Plush Satchels.

“ Leather do.

Carpet Bags.

Brussels do.

Enamelled do.

Black Cotton Velvet Ribbons, all widths.

“ Silk do. do. do.

Coloured do. do. do. do.

Dress Trimmings, full assortment of Newest Styles.

“ Buttons.

FRINGES.

Colored Silk Fringes.
 Black do. do.
 " Mohair do.
 Toilet do.
 White Cotton do.
 Colored do. do.
 Daisey, White and Colored.
 Crape Trimmings.
 Black Silk Tassels.
 " " Girdles.
 Colored do. do.

BINDINGS.

Black Silk Prussian Binding.
 Coloured " do.
 Black Silk Bindings for Coats.
 Coloured " "
 Black Milan Binding.
 Coloured "
 Military "
 Stay "
 Carpet "
 Green Scarlet and Yellow Quality
 " " Double London.
 Boot Web.
 Black Cotton Ferret.
 Plain Cotton Braid, all Widths.
 Waved " do.
 Russian Silk for Embroidery.
 " Worsted.
 " Waved.
 Plain Worsted Braid, No. 9, all
 colors.
 Waved Worsted Braid, No. 13,
 all colors.
 Worsted " 29.
 " do. 33.
 Piping Cord, English & American.
 Skirt " Black and White.
 Window Line, Scarlet, Blue & Green
 Tassels in the above colours.
 Chaik Lines.
 Fishing "
 Needles of various Makes.
 Packing Needles.

Knitting Pins.
 Fish Hooks.
 Bath Cotton Stay Laees.
 " Worsted do.
 Boot Laees, Round and Flat.
 " do. Silk.
 " do. Linen.
 French Working Cotton.
 Crochet "
 Moravian "
 Linen Floss.
 Silk "
 Embroidery Silk.
 Purse Twist.
 Black Silk Twist.
 Drab " do.
 Raven Sewings.
 Italian "
 Assorted Colored "
 Drab Cloth "
 Clark's 100 yds., Spools.
 " 150 do.
 " 300 do.
 Dawsons' 100 do.
 " 300 do.
 Coates' 300 do.
 Machine Thread, Linen.
 Clark's " Cotton.
 Machine Twist.
 Gilling Thread.
 Marshall's and other Linen Thread
 Steel Extension Skirts.
 Covered Hoops.
 Brass "
 Cane "
 " in Bundles.
 Bonnet Cane.
 Whale-Bone in Bundles.
 " do. Dressed.
 " do. for Skirts.
 Buckram, Black and White.

TAPES.

Star, all Nos.
 Imperial, "

Im
 Du
 Ind
 Pin
 Ha
 "
 "
 Ho
 Pin
 Oun
 Rib
 Bla
 Vest
 Rib
 Bon
 "
 Berli
 Berli
 Flee
 Meri
 Whe
 Fing
 Mott
 Chevi
 Cana
 t
 Black
 "
 "
 Drab
 Fancy
 "
 Pearl,
 Fancy
 Black
 Metal,
 Fancy
 Linen
 Bone
 Metal
 Ivory E

Imperial in Boxes.
 Dutch Tapes.
 India "
 Pink "
 Hair Pins in Boxes.
 " " per Pound.
 " " India Rubber.
 Hooks and Eyes, Black & White.
 Pins, English and American.
 Ounces "
 Ribbon "
 Black "
 Vest Back Straps.
 Ribbon Wire, Black & White 3, 4.
 Bonnet Wire-Cotton Black & White
 " " Silk.
 " " Straw.
 Berlin Wools, Single and Double,
 Black & White & all Colours.
 Berlin Wool Patterns.
 Fleecy "
 Merino "
 Wheeling "
 Fingering "
 Mottled Yarns.
 Cheviot Wool.
 Canadian Yarns in various quali-
 ties and Mottles.

BUTTONS.

Black Florentine Coat and Vest.
 " Figured and Round, do.
 " Silk do.
 Drab Florentine " do.
 Fancy Tweed " do.
 " Composition " do.
 Pearl, Coat and Vest.
 Fancy Horn "
 Black and Fancy India Rubber.
 Metal, Coat and Vest.
 Fancy Glass.
 Linen Buttons.
 Bone Brace Buttons.
 Metal " do.
 Ivory Buttons for Boys Dresses.

Button Moulds.
 Pearl, Shirt.
 White Agate.
 Coloured "
 Bone Dressing Combs.
 India Rubber Combs.
 Bone and Ivory Combs. .
 Side Combs in Rubber and Shell.
 Back " " do.
 Pocket " " and Horn.
 Misses Circular.
 Tooth Brushes.
 Nail "
 Shaving "
 Razor Stropps.
 Bill Wallets.
 Portmonaies.
 Violin Strings.
 Pantaloons and Vest Buckles.
 Thimbles, Brass and Plated.
 Lead Pencils.
 Slate "
 Carpenters "
 Penholders.
 Pens.
 Slates.
 Note Paper, Ruled and Plain.
 Post " "
 Pott " "
 Foolscap " "
 Envelopes, every description.
 Wrapping Papers, great variety.
 Memorandum Books in variety.
 Copy " "
 Day " "
 Journals " "
 Ledgers " "
 Cash " "
 Bill " "
 Letter " "

SCHOOL BOOKS.

1st Readers.
 2nd "
 3rd "

4th
 5th
 Len
 Kir
 Ari
 San
 Cop

Blac

Whi

Colo

Blac

Whi

Colo

Fren

Engl

"

Whit

Black

"

Oran

Mason

Black

Faney

Orien

Black

White

Statut

in

Black

"

4th Readers.
 5th " "
 Lennie's Grammar.
 Kirkhum's " "
 Arithmetics, 1st and 2nd.
 Sangsters.
 Copy Book, 3, 4 and 5 sheet.

FANCY DEPARTMENT--SECOND FLOOR.

Black Lutestring Ribbon, Plain
 Edge, 2d. 4d. 6d. 8d. 10d. 12d.
 14d. 16d.
 White do. do. do.
 2d. 4d. 6d. 8d. 10d. 12d. 14d. 16d.
 Colored do. do. do.
 2d. 4d. 6d. 8d. 10d. 12d. 14d. 16d.
 Black do. Pearl & Fan-Edge,
 16d. 20d. 24d. 30d.
 White do. do. do.
 16d. 20d. 24d. 30d.
 Colored do. do. do.
 16d. 20d. 24d. 30d.
 French Black & White Satin Ribbon,
 Nos. 1, 1 $\frac{1}{2}$, 2, 3, 4, 5, 7, 9, 12.
 English do. do. do.
 Nos. 1, 1 $\frac{1}{2}$, 2, 3, 4, 5, 7, 9, 12.
 " Colored do. do.
 Nos. 1, 1 $\frac{1}{2}$, 2, 3, 4, 5, 7, 9, 12.
 White and do. Gauze, all widths.
 Black & White Love Ribbon do.
 " Watered Pad, do.
 Orange Sash Ribbon, do.
 Masonic do. do. do.
 Black & Colored Hat Bands, do.
 Fancy Bonnet Ribbons, do.
 Orientals, all Colors, do.
 Black Silk Ferrets, do.
 White do. do.
 Statute Galloon for Flannel Bind-
 ing.
 Black Silk Galloon, 2d. 4d. 6d.
 " Union do. 2d. 4d. 6d.

SILKS.

Black Gros de Naples.
 Colored do. do.
 Shot and Colored do.
 Colored Glace.
 Black Glace, all widths.
 " " Check and Stripe do.
 Fancy Dress Silks.
 French Taffetas.
 Fancy Silk Robes.
 Black Satinette.
 Colored do.
 Black Figured do.
 Black Satin, French and English.
 White do. do. do.
 Colored do. do. do.
 " Embossed do. do.
 Brown Barege, French.
 Royal Barege, French.
 Emerald do. do.
 Persians, all Colors.
 Sarsnets, do.
 Black Silk Velvet.
 Colored do.
 Black Patent Velvet.
 Colored do.
 Black and Colored Cotton Back.
 Black Silk Velvet for Mantles.
 " " Serge.
 Colored do.

FLOWERS.

English Flowers, per Spray.
 " " Box.
 French " "
 " " Spray.
 " Mixing Flowers.
 Rose Buds, all Colours.
 Black Ostrich Feathers.
 Colored do. do.
 White and Colored Maraho.
 French Plumes in all Colors.
 Bonnet Fronts, Plain.
 " " with Flowers.
 Fancy Silk Parasols.

Brown
 Black
 Plain F
 "
 Fancy
 Ladies'
 " a
 " F
 " Ne
 " C
 " E
 " C
 " B
 Women
 "
 "
 "
 "
 "
 Childre
 Br
 Misses'
 Women
 Childre
 eve
 Misses'
 Women
 Boys' W
 " Ca
 " Lu
 " Le
 " Fa
 " "
 Men's V
 " F
 " L
 " C
 " P
 " L
 Boys' 'I
 Ha
 Men's
 " Sil

Brown & Col'd Moire Antique	do.		
Black	do.	do.	do.
Plain Black & Colored Sun Shades			
" " Tom Thumbs, &c.			
Fancy Colored Cotton Parasols.			
Ladies' Black Silk Capes.			
" and Col'd Moire Antique	do.		
" " Tweed	do.		
" Black Cloth Mantles of the Newest Styles.			
" Colored	do.	do.	
" Black Silk Velvet	do.		
" Colored	do.	do.	
" Black & Colored Lace	do.		
Women's Plain Luton Bonnets.			
" " " Rice	do.		
" Fancy Braid	do.		
" " Colored Silk	do.		
" Buckram Bonnet Shapes.			
" " " Net Fronts			
" " " Col'd Willow			
Children's Luton Straw Hats, in Brown, Black and White.			
Misses' do do do.			
Women's do do do.			
Children's Fancy Straw Hats of every description.			
Misses' do do do.			
Women's do do do.			
Boys' White & Colored Chip Hats.			
" Canton	do.		
" Luton Straw	do.		
" Leghorn do	do.		
" Fancy Braid	do.		
" " Straw Caps.			
Men's White & Colored Chip Hats			
" Fancy Braid	do.		
" Leghorn	do.		
" Canton	do.		
" Panama	do.		
" Luton	do.		
Boys' Black and Colored Felt Hats of the Newest Styles.			
Men's do do do.			
" Silk Hats, American & French.			

Misses' Felt Hats in every Fashionable shape.

Women's do do do.
Children's do do do.

We get up these Goods ourselves, and can particularly warrant the Materials. The styles embrace every Novelty of the Season.

CLOTH CAPS.

Boys' Black Cloth Caps.
" Fancy Tweed do.
" Black and Blue Beaver do.
" Glengary do.
" Balmoral do.
" Sealette do.
" Creamette do.

Men's Black Cloth Caps.

" Fancy Tweed do.
" Black and Blue Beaver do.
" Glengary do.
" Balmoral do.
" Canadian do.
" Alma, &c. do.

" Fur Caps of every Description and Style.

Boys' do do do.
Misses' Fur Boas do do.
Womens' do do do.
" do Victorines do.

Misses' Fur Cuffs of every description and Style.

Womens' do do do.
" do Gauntlets do.
Men's do do do.
" do Mufflers do

BOOTS AND SHOES.

Altogether of 'Home' manufacture, and Material and Workmanship warranted.

Women's Enamelled Slippers,
from 3 to 7
" Carpet do 3 to 7
" Calf do 3 to 7

Men's C
" E
" C
Women
"
"
"
Children

"
"
"
"
" Pa

Misses'
" E
" Pr
" B
" Ca
" "

Women'
" E
"
" I
"
" C

Boys' E
" Pa
" Ca
" do
Men's E
" Pa
" Ca
" do

Boys' F
Gait
" E
" Ca
" do
Men's F
Gait

Men's Calf Slippers, from	6 to 11
" Enamelled do	6 to 11
" Carpet do	6 to 11
Women's En'led Buskins,	3 to 7
" Patent do	3 to 7
" Calf do Pegged,	3 to 8
" Enamelled do	3 to 8
Children's Colored Morocco Shoes	
from	2 to 6
" " " Boots,	2 to 6
" Enamelled do	5 to 10
" " Copper Toes,	5 to 10
" Calf do do	5 to 18
" " Double Sole,	5 to 10
" Patent Leather Boots	5 to 10
Misses' do	do 11 to 2
" Enamelled	do 11 to 2
" Prunella	do 11 to 2
" Balmoral	do 11 to 2
" " Double Sole,	11 to 2
" Calf S. S.	do 11 to 2
" " Double Sole,	11 to 2
Women's Prunella Boots,	3 to 7
" Balmoral do	3 to 7
" " Double Sole,	3 to 7
" Enamelled S. S.,	3 to 8
" " Double Sole,	3 to 8
" Calf S. S.,	3 to 8
" " Double Sole,	3 to 8
Boys' Enam'd Oxford Tie,	1 to 5
" Patent do.	1 to 5
" Calf do.	1 to 5
" do Double Soled,	1 to 5
Men's Enamelled do. S. S.,	6 to 11
" Patent do do.	6 to 11
" Calf do do.	6 to 11
" do Double Sole,	6 to 11
Boys' Patent Congress	
Gaiters, S. S.,	1 to 5
" Enamelled do do.	1 to 5
" Calf do do.	1 to 5
" do Double Sole,	1 to 5
Men's Patent Congress	
Gaiters, S. S.,	6 to 11

Men's Enamelled Congress			
	Gaiters, S. S.,	6 to 11	
	" Calf do do.	6 to 11	
	" do Double Sole,	6 to 11	
Youths Kip Brogans from 10 to 13			
	" " Cobourgs do	10 to 13	
Boys	" " do	1 to 5	
	" " Brogans do	1 to 5	
Men's	" " do	6 to 11	
	" " Cobourgs do	6 to 11	
Youths Long Kip Boots, 10 to 13			
	" " Copper Toes,	10 to 13	
Boys	" do.	1 to 5	
Men's	" Coarse do.	6 to 11	
	" " Kip do.	6 to 11	
	" " Calf do.	6 to 11	
	" " Double Sole,	6 to 11	
Children's India Rubber Shoes, all sizes.			
Misses	" " do	do.	
Women's	" " do	do.	
Men's	" " do	do.	
	" " Long Boots		
Fancy Windsor Paper.			
Blue	" do.		
Green	" do.		

DIRE

The un
the nee
article h
have no
to have

FIRST
DIRECT IMPORTATION OF TEAS FROM CHINA

To
CANADA WEST.

THE unparalleled advance in the price of TEAS has forced upon us the necessity of, as far as possible, avoiding every profit on the article between the producer and our customer. With this view, we have now a shipment on the way from China direct, which we hope to have in store by the time this book reaches your hands.

GROCERY DEPARTMENT.

We make this a leading department of our general business, and from our facilities and connections, are prepared to meet the closest buyers. We subjoin a List, to assist our friends in making up their orders.

ARROWROOT, Bermuda, Barbadoes, Jamaica, Demerara.

ALUM.

BLACKLEAD, British Lustre, Mexican.

BLACKING in Tins, Penny Cake, Frank Miller's Waterproof.

BARLEY, Pot, Pearl.

BORAX, English Refined.

BATH BRICK.

BLUE VITRIOL.

BLUE, Fig, Button.

BRUSHES, Blacklead, Flat, Round, Top-knot, and Handled Shoe, Scrubbing, & White Wash.

BROOMS, Corn, all qualities.

BRIMSTONE, Cane, and Flour of.

BAKING POWDER, Durkee's, in Tins and Packets.

CORKS, Beer, Wine, Taper, Bung.

CLOTHES PINS, Whittled, Spring.

CASSIA, Whole, Ground.

CINNAMON. do. do.

CLOVES.

CARRAWAYS.

CAMPOR, English, Refined.

CREAM OF TARTAR, Pure.

CURRY POWDER, East India.

CANDIED PEELS, Lemon, Orange, and Citron.

CONFECTIONS, Wotherspoon's, Scotch, in Tins, Bullseyes,

CANDY

CHOCOLATE

COFFEE

COFFEE

CHOCOLATE

COFFEE

ESPRESSO

FRUIT

FISH,

S. Sticks, H. H. Candy,
Lozenges, Mixtures, Sugar
Candy.

CANDLES, Tallow, 6s, 8s, Belmont
Sperm, Belmont Stearine,
Pure Sperm, Wax.

CHALK, Red and White.

CHOCOLATE, Brooks', Norfolk
Coy., Baker & Bro., Ba-
ker's Premium, Taylor's
Soluble, Cadbury Bros. do.

COCOA, Shells, Knibs, Paste,
Powder.

COFFEE, St. Domingo, Rio Jan-
iro, Maracaibo, Jamaica,
Laguayra, Java, Mocha.
Green, Roasted & Ground.

CHICORY, Prepared.

CIGARS, Havana, Principe, Ma-
nilla, Cheroots, &c.

COLORING, French Brandy.

COPPERAS.

EPSOM SALTS.

FRUIT, Raisins, Mkl., Layers, Va-
lencia Sultana—Currants,
Zante — Figs, Turkey,
Smyrna, Boxes and Drums
Prunes, French, in Jars &
Boxes, kegs and barrels—
Nuts, English Walnuts.
Barcelona, Brazil, Pecan.
Peanuts — Almonds, Lan-
guedoc, Provence, Sicily
and Valencia.

FISH, Herrings, No. 1, Round &
Split, Lake Huron, Loch-
fine, Scaled and Extra, in
boxes.

Codfish, in bbls and hds.

Salmon Trout, } Lake Huron.

White Fish, } in hls & bbls.

Sardines in boxes, hls & qrs

Lobsters in 1 and 2 lb Tins.

Salmon in 1 and 2 do. do.

GINGER, African, Bengal, Jamaica, Ground do., Canton Preserved do.

GLASS, Window, all sizes, German Sheet, 9 by 7, to 24 by 18.

GLASS WARE, Tumblers, 6 and 8 Flute, $\frac{1}{3}$ pts. Plain heavy bar.

GELATINE, Cox & Co's 1 qt packet.

GLUE, English and American.

INDIGO, Madras.

INK, black, 1 oz., $1\frac{1}{2}$ oz., 2 oz., and 4 oz.

LAMPBLACK, $\frac{1}{4}$ lb. packets.

LOGWOOD, Extract of.

LIQUORICE, Calabria, Refined.

MOP HANDLES.

MOLASSES, Cuba, Cuba Clayed, Trinidad, Porto Rico.

MUSTARD, Crawford's Durham, 5 lb. Tins, Colman's Durham, 1 lb. Jars, Thom's Superfine in lb. and $\frac{1}{4}$ lb. bottles, Wix's, &c.

MADDER, French, Belgian.

MATCHES, Block, Telegraph, Vienna.

MACE.

MACCARONI, Italian.

NUTMEGS.

OILS, in Hhds. and qr. Casks, Pine, Sperm, Olive, W. B. Elephant, Lard. Crude Whale, Tanner's, Pine or Rosin, Boiled and Raw Linseed in Bottles, Pints and Quarts, Salad Oil in bottles, 2 oz., 3 oz., qrs., halves, and Pints, Castor Oil.

OATMEAL in Burels.

PICKLES, Crosse and Blackwell's, pints, Mixed and Assorted.

SAL

PEA

PIM

PIP

PAI

POW

PET

PAI

ROSI

RICE

SALT

SENN

SEED

S.

SAGG

SALT

- Batty's do. do.
 Lazenby's do. do.
 Cox's do. do.
 Thiu's do. do.
 SAUCES, Lee & Perrin's Worcestershire, half-pints, Harvey, John Bull, King of Oude, Soyer's, Mogul, Mushroom Catsup, Pepper Sauce, pints and quarts.
 PEPPER, Black, whole and ground.
 White do. do.
 Cayenne do. do.
 PIMENTO, whole and ground.
 PIPES, T. D. Glasgow, French.
 PAULS, 2 and 3 Hoop.
 POWDER, Blasting, Cl. Cb., kegs 25 lbs. each.
 Sporting F., 1F., HF., do.
 " IF., HF., in lb. and $\frac{1}{2}$ lb. Tins.
 Partridge and Duck Shooting, Canada and Kelly Rifle, Diamond Grain.
 PUTTY, in Bladders, English.
 PAINTS, Dry, White and Red.
 Lead, 1 cwt. kegs.
 James, Genuine, No. 1, 2, 3, 4 25 lb. "
 Blundel Spence and Co., do. 25 lb. "
 Yellow Ochre, Venetian Red
 Spanish Brown.
 ROSIN, Yellow.
 RICE, Carolina, Arracan, Patna.
 SALTPETRE, English Refined.
 SENNA, Alexandria, East India.
 SEED, Conway Hoop.
 Corriander, Carraway.
 SAGO, Pearl, Brown.
 SALT, Onondago in bales.
 Darry in 14 lb. bags.
 Liverpool, Stoned & Coarse.
 Patent, in Drums.

SOAP, Judd's common, do. family.
Brown's " Liverpool.
Cowl's, Extra, Morton.
Castilo, Brown Windsor.
Honey Toilet, Magnum
Honey.
Assorted Tablets, Sun-
flower.

STARCH, Fulton Pure, do. Pre-
pared Corn.
Oswego " do. do.
Glenfield Starch.
Berger's Satin and Rice.

SODA, Bi-Carbonate of.
Sub. Saleratus.

SHOT, Patent, No. 8, S S G. S S.
B B, B. 1, 2, 3, 4, 5, 6, 7, 8, 9, 10.

STONE POLISH, Phoenix Co., Dix-
ons.

SNUFF, Mrs. Miller's Maccaba.
Scotch.

SYRUP, Sugar House, Honey.
Standard.

SUGARS, Cuba, Musco, Porto R. do
New Orleans.
Yellow Refin'd, Nos. 1 $\frac{1}{2}$, 2, 2 $\frac{1}{2}$
Crushed A. Dry Crushed.
Granulated, Ground.
Extra Ground, Loaf.

TEAS, ^{Green} Twankay, Young Hyson.
Hyson Skin, Old Hyson.
Imperial, Gunpowder.
Congo, Souchong.
Oblong, Flowery, and
Orange Pekoe.

TOBACCO, $\frac{3}{4}$ Boxes in Bands, in
10s, 7s, 5s, and Pounds.
 $\frac{1}{2}$ Boxes in $\frac{1}{2}$ lbs., Fig and
Twist.
Cut Smoking.
Fine Cut Chewing, do. in
Foil.

TAPIOCA.

TUBS, Washing in Nests of 3 & 8.

Tobacco Dates
& Opium

Plug 10 *cts* ^(D)

Cut Smokg 5

Snuff 10

fine Cut 15

Parrot Twist 2

TUR
TEA
VIN

VER

POR

SHIE

MADE
CLEAR

CHAM

BRAN

WHIS

GIN,

E

TURPENTINE, Spirits of.
 TEA CADIES, in Nests.
 VINEGAR, Bordeaux, Malt.
 White Wine, Pure.
 VERMICELLI, Italian.

WINES AND LIQUORS,

In Hhds. and $\frac{1}{4}$ Casks.

PORT, Tarragona, Burgundy, Gra-
 ham's, Hunt's, Taylor's
 Sylva's, also in Bottle,
 from 6 dols. to 15 dols. per
 Dozen.

SHERRY, in Hhds. and $\frac{1}{4}$ casks,
 Diaz & Co., Anchor, Bur-
 don's Pomartun, Cosen
 Particular; also in Bottles,
 from 6 dols. to 15 dols. per
 Dozen.

MADRID, Park's in $\frac{1}{2}$ casks.

CLARET, in Hhds.
 " in Bottles.

CHAMPAGNE, M'Leod's, pts & qrts.
 Moit and Chandon "

BRANDY, Pale and Dark, in Hhds.
 and $\frac{1}{4}$ casks, and boxes 1
 Dozen each.

James Hennessy, Otan Du-
 puz & Co., J. & H. Man-
 tell, Jules Robin, Chalou-
 pin, United Vineyard Pro-
 prietors.

WHISKY, Glenlivet, Islay, Loch-
 nagar and Kirkliston, in
 Hhds. $\frac{1}{4}$ casks, and cases,
 Malt, Barbons, Old Rye,
 Monongahela and Canadian
 of various Brands in Bar-
 rels.

GIN, John Diknyper in Hhds. and
 $\frac{1}{4}$ casks.

" in cases Red and Green.

English Gin in $\frac{1}{4}$ casks.

rates
 10 15
 5
 10
 15
 2

Booth's Old Tom in cases.
 Remond " do.
 RUM JAMAICA, Pns. Hhds., and
 casks.
 Santa Cruz " and in cases 1 Dozen each.
 PURE SPIRITS in Barrels.
 ALCOHOL "
 PORTER in Bbls., of 4 Doz. Qrts.
 and 8 Doz. Pints, Trumon,
 Hanbury, Buxton & Co.,
 Barclay, Perkins & Co., E.
 & G. Hibberts, Guinness,
 Dublin.
 ALE, Salt & Co's Buxton Ale in
 Hhds., Bass in Bbls. Pints
 and Quarts.
 Abbot " do.
 Allsop's Bitter, do.
 WASHBOARDS, Zinc.
 WHITING.

Silas Cook
pd Linder to 25 Feb 1.00
Jasun Ham
pd 6 25 Feb - 1.00

Fr
 M
 1
 2
 3
 4
 5
 6
 7
 8
 9
 10
 11
 12
 13
 14
 15
 16
 17
 18
 19
 20
 21
 22
 23
 24
 25
 26
 27
 28
 29
 30
 31
 ALEX
 Roy
 crow
 Juice
 Aug
 Aug
 Vic
 Princ
 Erue

FIRST MONTH.

JANUARY.

31 DAYS.

Days of the			MEMORANDA.	M's Age.	Days to end of Year.
M.	W.	V.			
1	Th.	1	<i>Jan'y 19 1865</i> <i>St Josephs Island</i> <i>is now on sale at</i> <i>our shillies, an acre</i> <i>terms actual settlement</i> <i>Superior to Manitoba as</i> <i>a whole of 8 an acre was</i> <i>bid for certain lots in</i> <i>1856. Said to be very excellent</i> <i>quality land</i> <i>Agent Joseph Wilson</i> <i>at Sault St Marie</i>	11	364
2	Fr.	2		12	363
3	Sa.	3		13	362
4	Su.	4		14	361
5	M.	5		15	360
6	Tu.	6		16	359
7	W.	7		17	358
8	Th.	8		18	357
9	Fr.	9		19	356
10	Sa.	10		20	355
11	Su.	11		21	354
12	M.	12		22	353
13	Tu.	13		23	352
14	W.	14		24	351
15	Th.	15		25	350
16	Fr.	16		26	349
17	Sa.	17		27	348
18	Su.	18		28	347
19	M.	19		29	346
20	Tu.	20		1	345
21	W.	21		2	344
22	Th.	22		3	343
23	Fr.	23		4	342
24	Sa.	24		5	341
25	Su.	25		6	340
26	M.	26		7	339
27	Tu.	27		8	338
28	W.	28		9	337
29	Th.	29		10	336
30	Fr.	30		11	335
31	Sa.	31		12	334

ROYAL FAMILY OF GREAT BRITAIN.

ALEXANDRINA VICTORIA I, was born 24th May, 1819. Her Majesty [only child of his Royal Highness, Edward, Duke of Kent, fourth son of George III.] succeeded to the crown on the death of her Uncle, William IV., on the 20th June, 1837; crowned 25th June, 1838; married 10th February, 1840, her cousin, PRINCE ALBERT FRANCIS AUGUSTUS CHARLES EMMANUEL of Saxe-Coburg and Gotha, who was born 26th August, 1819, and died December 14, 1861. Issue

Victoria Adelaide Louisa [Princess Royal,] born, 21st Nov, 1840; Albert Edward, Prince of Wales, born 9th Nov, 1841; Alice Maud Mary, born 24th April, 1843; Alice Ernest Albert, born 6th Aug., 1844; Helena Augusta Victoria, born 25th May, 1846;

25 Feb -
1.0025 Feb -
1.00

SECOND MONTH.

FEBRUARY.

28 DAYS.

Days of the			MEMORANDA.	M's Age.	Days to end of Year.
M.	W.	F.			
1	Su.	32		13	333
2	M.	33		14	332
3	Tu.	34		15	331
4	W.	35		16	330
5	Th.	36		17	329
6	Fr.	37		18	328
7	Sa.	38		19	327
8	Su.	39		20	326
9	M.	40		21	325
10	Tu.	41		22	324
11	W.	42		23	323
12	Th.	43		24	322
13	Fr.	44		25	321
14	Sa.	45		26	320
15	Su.	46		27	319
16	M.	47		28	318
17	Tu.	48		29	317
18	W.	49		0	316
19	Th.	50		1	315
20	Fr.	51		2	314
21	Sa.	52		3	313
22	Su.	53		4	312
23	M.	54		5	311
24	Tu.	55		6	310
25	W.	56		7	309
26	Th.	57		8	308
27	Fr.	58		9	307
28	Sa.	59		10	306

Louisa Caroline Alberta, born 18th March, 1848; Arthur Patrick Albert, born 1st May, 1850; Leopold Duncan Albert, born 7th April, 1853; Beatrice Victoria Feodore, born 14th April, 1857. Victoria [Princess Royal] married 25th Jan. '58, Prince Frederick William of Prussia.

GOVERNOR GENERAL AND CABINET.

His Excellency the Right Hon. Charles Stanley Viscount Monck, Governor General of British North America, and Captain-General and Governor-in-Chief of the Provinces of Canada, New Brunswick, Nova Scotia, and the Island of Prince Edward, &c., &c., &c. Denis Godley, Governor General's Secretary; Capt. Retallack, 63rd Regt., A.D.C., Military Secretary and Principal Aide-de-Camp. Colonel Irvine, Provincial Aide-de-Camp. Lieut.-Col. Duchesnay, extra Provincial Aide-de-Camp.

CIVIL SECRETARY'S OFFICE.—Denis Godley, Secretary; H. Cotton, Chief Clerk;

THIR

Day

M.

1 S

2 M

3 T

4 W

5 T

6 F

7 S

8 S

9 M

10 T

11 W

12 T

13 F

14 S

15 S

16 M

17 T

18 W

19 T

20 F

21 S

22 S

23 M

24 T

25 W

26 T

27 F

28 S

29 S

30 M

31 T

J. Kidd,

Extra M

EXEC

V. Scot

Antome

Hon. W

Minster

D'Arcy

Agricul

C. Abbot

28 Days.

THIRD MONTH.

MARCH.

31 Days.

M's Age.	Days to end of Year.
13	333
14	332
15	331
16	330
17	329
18	328
19	327
20	326
21	325
22	324
23	323
24	322
25	321
26	320
27	319
28	318
29	317
0	316
1	315
2	314
3	313
4	312
5	311
6	310
7	309
8	308
9	307
10	306

born 1st May,
Feodore, Lorn
ice Frederick

governor Gen-
-Chief of the
ince Edward,
etallack, 63rd.
olonel Irvine,
ide-de-Camp.
Chief Clerk ;

Days of the
m. w. y.

MEMORANDA.

M's Age. Days to end of Year.

1	Su.	60
2	M.	61
3	Tu.	62
4	W.	63
5	Th.	64
6	Fr.	65
7	Sa.	66
8	Su.	67
9	M.	68
10	Tu.	69
11	W.	70
12	Th.	71
13	Fr.	72
14	Sa.	73
15	Su.	74
16	Mo.	75
17	Tu.	76
18	W.	77
19	Th.	78
20	Fr.	79
21	Sa.	80
22	Su.	81
23	M.	82
24	Tu.	83
25	W.	84
26	Th.	85
27	Fr.	86
28	Sa.	87
29	Su.	88
30	M.	89
31	Tu.	90

11	305
12	304
13	303
14	302
15	301
16	300
17	299
18	298
19	297
20	296
21	295
22	294
23	293
24	292
25	291
26	290
27	289
28	288
29	287
1	286
2	285
3	284
4	283
5	282
6	281
7	280
8	279
9	278
10	277
11	276
12	275

J. Kidd, second Clerk ; P. Hill, Office Keeper ; G. Boxall, Messenger ; G. Smith, Extra Messenger.

EXECUTIVE COUNCIL.—Hon. J. S. Macdonald, Attorney General West; Hon. Louis V. Sicotte, Attorney General East; Hon. James Morris, Receiver General; Hon. Antoine A. D'Orion, Provincial Secretary; Hon. M. H. Foley, Postmaster General; Hon. Wm. McDougall, Commissioner of Crown Lands; Hon. Wm. P. Howland, Minister of Finance; Hon. Ulric J. Tessier, Commissioner of Public Works; Hon. D'Arcy McGee, President of the Council; Hon. Francois Evanturel, Minister of Agriculture and Statistics; Hon. Adam Wilson, Solicitor General West; Hon. J. J. C. Abbott, Solicitor General East.

FOURTH MONTH.

APRIL.

30 DAYS.

Days of the			MEMORANDA.	MPs Age.	Days to end of Year.
M.	W.	S.			
1	W.	91		13	274
2	Th.	92		14	273
3	Fr.	93		15	272
4	Sa.	94		16	271
5	Su.	95		17	270
6	M.	96		18	269
7	Tu.	97		19	268
8	W.	98		20	267
9	Th.	99		21	266
10	Fr.	100		22	265
11	Sa.	101		23	264
12	Su.	102		24	263
13	Mo.	103		25	262
14	Tu.	104		26	261
15	W.	105		27	260
16	Th.	106		28	259
17	Fr.	107		29	258
18	Sa.	108		0	257
19	Su.	109		1	256
20	M.	110		2	255
21	Tu.	111		3	254
22	W.	112		4	253
23	Th.	113		5	252
24	Fr.	114		6	251
25	Sa.	115		7	250
26	Su.	116		8	249
27	M.	117		9	248
28	Tu.	118		10	247
29	W.	119		11	246
30	Th.	120		12	245

OCCUPIERS OF LANDS IN UPPER CANADA.

The number of occupiers of lands in Upper Canada was 131,983 in 1860, and 99,906, in 1851—an increase of 32,077, or a little over 32 per cent. This was considerably less than the percentage of the increase of the whole population, which was 463. It is a singular circumstance that the number of very small landholders diminished considerably between 1851 and 1860. In the former year there were 12,417 occupiers of twenty acres and under, and in the latter year there were but 7,099 of this class. The number who held between 20 and 50 acres was 19,143 in 1851, and 26,630 in 1860; the number who held from 50 to 100 acres increased from 47,427 to 61,891; the number who held from 100 to 200 acres increased from 17,515 to 23,336; and the number who held above 200 acres increased from 3,404 to 5,027. The whole of the lands held in Upper Canada were 13,351,997 acres in 1860, against 9,525,915 in 1851—

FIFTH

Days of the

M.	W.	S.
1	Fr.	
2	Sa.	
3	Su.	
4	M.	
5	Tu.	
6	W.	
7	Th.	
8	Fr.	
9	Sa.	
10	Su.	
11	Mo.	
12	Tu.	
13	W.	
14	Th.	
15	Fr.	
16	Sa.	
17	Su.	
18	Mo.	
19	Tu.	
20	W.	
21	Th.	
22	Fr.	
23	Sa.	
24	Su.	
25	M.	
26	Tu.	
27	W.	
28	Th.	
29	Fr.	
30	Sa.	
31	Su.	

an increase
Canada.
titles of land
315,222; in
in Simcoe
from 231,0
an increas
less than 4
is Russell,
its populat
largest qua
county in
med acres

30 DAYS.

FIFTH MONTH.

MAY.

31 DAYS.

MPs	Days to end of Year.
Age.	
13	274
14	273
15	272
16	271
17	270
18	269
19	268
20	267
21	266
22	265
23	264
24	263
25	262
26	261
27	260
28	259
29	258
0	257
1	256
2	255
3	254
4	253
5	252
6	251
7	250
8	249
9	248
10	247
11	246
12	245

Days of the		
M.	W.	F.
1	Fr.	121
2	Sa.	122
3	Su.	123
4	M.	124
5	Tu.	125
6	W.	126
7	Th.	127
8	Fr.	128
9	Sa.	129
10	Su.	130
11	Mo.	131
12	Tu.	132
13	W.	133
14	Th.	134
15	Fr.	135
16	Sa.	136
17	Su.	137
18	Mo.	138
19	Tu.	139
20	W.	140
21	Th.	141
22	Fr.	142
23	Sa.	143
24	Su.	144
25	M.	145
26	Tu.	146
27	W.	147
28	Th.	148
29	Fr.	149
30	Sa.	150
31	Su.	151

MEMORANDA.

MPs	Days to end of Year.
Age.	
13	244
14	243
15	242
16	241
17	240
18	239
19	238
20	237
21	236
22	235
23	234
24	233
25	232
26	231
27	230
28	229
29	228
1	227
2	226
3	225
4	224
5	223
6	222
7	221
8	220
9	219
10	218
11	217
12	216
13	215
14	214

an increase of 3,528,992 acres, or nearly double the corresponding increase in Lower Canada. The following are the counties in which the greatest increase in the quantities of land held has taken place. In Kent the increase was from 216,422 acres to 315,222; in Lambton, from 167,969 to 291,803; in Victoria, from 160,190 to 292,765; in Simcoe, from 530,103 to 466,624; in Wellington, from 358,949 to 532,671; in Huron, from 281,037 to 632,324, an increase of 348,287 acres; in Grey, from 217,319 to 557,697, an increase of 340,378 acres; and in Bruce from 35,613 to 477,882, an increase of not less than 442,269 acres. The county in which the smallest quantity of land is held is Russell, which has also the smallest population of any county in Upper Canada—its population being 6,824 and its occupied acreage, 73,715. The county in which the largest quantity of land is held is Huron, which has also the largest population of any county in Upper Canada [excepting York]—its population being 51,951 and its occupied acreage 632,324.

1860, m.d. 99. — was considered which was 463. ers diminished. 417 occupiers 9 of this class, and 26,630 in to 61,891; the 336; and the whole of the 915 in 1851—

KERR, BROWN & CO.

SIXTH MONTH.

JUNE.

30 DAYS.

Days of the			MEMORANDA.	M's Age.	Days to end of Year.
M.	W.	Y.			
1	M.	152			
2	Tu.	153		15	213
3	W.	154		16	212
4	Th.	155		17	211
5	Fr.	156		18	210
6	Sa.	157		19	209
7	Su.	158		20	208
8	Mo.	159		21	207
9	Tu.	160		22	206
10	W.	161		23	205
11	Th.	162		24	204
12	Fr.	163		25	203
13	Sa.	164		26	202
14	Su.	165		27	201
15	M.	166		28	200
16	Tu.	167		29	199
17	W.	168		0	198
18	Th.	169		1	197
19	Fr.	170		2	196
20	Sa.	171		3	195
21	Su.	172		4	194
22	M.	173		5	193
23	Tu.	174		6	192
24	W.	175		7	191
25	Th.	176		8	190
26	Fr.	177		9	189
27	Sa.	178		10	188
28	Su.	179		11	187
29	M.	180		12	186
30	Tu.	181		13	185
				14	184

PRODUCTION OF WHEAT---It is an error to suppose that ours is the greatest wheat-producing country. We do our full share, without doubt, but our system of agriculture is steadily exhausting our best lands, and in a few years a diminution of the yield will be apparent in our census returns. Last year's crop is assumed to be 180,000,000 bushels, but the average is probably only 120,000,000. The average yield of other countries is as follows: France, 191,422,248; Britain, 145,800,000; Two Sicilies, 64,000,000; Canada, 60,000,000; Spain, 46,470,184; Aust. in, 28,735,568; Sarlinia, 19,975,000; Russia, [export, only] 18,921,776; Belgium, 13,350,000; Portugal, 5,500,000; Turkey [exports only] 4,629,000; Holland, 3,600,000; Denmark, 3,000,000; Sweden and Norway, 1,200,000. Here is an annual production of over 606,000,000 bushels. If the crops of this continent are included, the total may be safely assumed to be 900,000,000, as the unascertained product of Russia and Turkey must be very

SEVEN

Days	
M.	W.
1	W.
2	Th.
3	Fr.
4	Sa.
5	Su.
6	M.
7	Tu.
8	W.
9	Th.
10	Fr.
11	Sa.
12	Su.
13	M.
14	Tu.
15	W.
16	Th.
17	Fr.
18	Sa.
19	Su.
20	M.
21	Tu.
22	W.
23	Th.
24	Fr.
25	Sa.
26	Su.
27	M.
28	Tu.
29	W.
30	Th.
31	Fr.

large. N
family co
highest c

Coffee
whole of
Fra. cc. S
then only
Belgium.
75,000,000
something

30 DAYS.

M's Age.	Days to end of Year.
15	213
16	212
17	211
18	210
19	209
20	208
21	207
22	206
23	205
24	204
25	203
26	202
27	201
28	200
29	199
0	198
1	197
2	196
3	195
4	194
5	193
6	192
7	191
8	190
9	189
10	188
11	187
12	186
13	185
14	184

SEVENTH MONTH.

JULY.

31 DAYS.

Days of the			MEMORANDA.	M's	
M.	W.	Y.		Age.	Days to end of Year.
1	W.	182		15	183
2	Th.	183		16	182
3	Fr.	184		17	181
4	Sa.	185		18	180
5	Su.	186		19	179
6	M.	187		20	178
7	Tu.	188		21	177
8	W.	189		22	176
9	Th.	190		23	175
10	Fr.	191		24	174
11	Sa.	192		25	173
12	Su.	193		26	172
13	M.	194		27	171
14	Tu.	195		28	170
15	W.	196		29	169
16	Th.	197		0	168
17	Fr.	198		1	167
18	Sa.	199		2	166
19	Su.	200		3	165
20	M.	201		4	164
21	Tu.	202		5	163
22	W.	203		6	162
23	Th.	204		7	161
24	Fr.	205		8	160
25	Sa.	206		9	159
26	Su.	207		10	158
27	M.	208		11	157
28	Tu.	209		12	156
29	W.	210		13	155
30	Th.	211		14	154
31	Fr.	212		15	153

large. No better evidence of the primary value of the wheat plant to the human family could be given than at an exhibition such as this. It proves that where the highest civilization has been attained, there the greatest production is realized.

COFFEE—The consumption of coffee is estimated in the following manner: The whole of North America consumes 337,500,000 lbs., being in the largest proportion, France, Switzerland, Spain, Italy, Portugal, and adjoining islands, consume amongst them only 202,500,000 lbs.; Germany, including Austria, 292,500,000 lbs.; Holland and Belgium, 142,500,000 lbs.; Denmark, Sweden, Russia, Finland and Poland, only 75,000,000 lbs. among them, owing probably, to the fondness of those nations for something stronger. Great Britain and Ireland consume about 60,000,000 lbs.

test wheat-
of agricul-
t to be 180-
age yield of
Two Sic-
568; Sardi-
; Portugal.
3,000,000;
606,000,000
y assumed
ust be very

EIGHTH MONTH,

AUGUST.

31 DAYS.

Days of the			MEMORANDA.	M's Age.	Days to end of Year.
M.	W.	S.			
1	Sa.	213			
2	Su.	214		16	152
3	M.	215		17	151
4	Tu.	216		18	150
5	W.	217		19	149
6	Th.	218		20	148
7	Fr.	219		21	147
8	Sa.	220		22	146
9	Su.	221		23	145
10	M.	222		24	144
11	Tu.	223		25	143
12	W.	224		26	142
13	Th.	225		27	141
14	Fr.	226		28	140
15	Sa.	227		29	139
16	Su.	228		1	138
17	M.	229		2	137
18	Tu.	230		3	136
19	W.	231		4	135
20	Th.	232		5	134
21	Fr.	233		6	133
22	Sa.	234		7	132
23	Su.	235		8	131
24	M.	236		9	130
25	Tu.	237		10	129
26	W.	238		11	128
27	Th.	239		12	127
28	Fr.	240		13	126
29	Sa.	241		14	125
30	Su.	242		15	124
31	M.	243		16	123
				17	122

COMPARATIVE STATEMENT of the quantity and value of the principle articles of Canadian Products and Manufactures exported during the year 1859, 1860 and 1861 :

	1859.	1860.	1861.
Produce of the Mine	\$ 168,512	538,306	454,963
" " Fisheries	817,423	832,616	663,700
" " Forest	9,663,962	11,012,253	9,572,615
Animals and their Products	3,759,502	4,221,257	3,681,468
Agricultural Products	7,339,798	14,250,225	18,244,631
Manufactures	487,231	502,037	280,130
Coin and Bullion	3,652	59,228	244,613
Other Articles	110,742	137,240	154,718
Total Value of Exports	22,680,812	31,612,192	33,305,768

NIN

Da

M.

1

2

3

4

5

6

7

8

9

10

11

12

13

14

15

16

17

18

19

20

21

22

23

24

25

26

27

28

29

30

Disc
seen w
nite,
sand,
fruit in
surface
cover o
yet thr
sieve—
second
ting w
grazing

31 DAYS.

M's	Days to end of Year.
16	152
17	151
18	150
19	149
20	148
21	147
22	146
23	145
24	144
25	143
26	142
27	141
28	140
29	139
1	138
2	137
3	136
4	135
5	134
6	133
7	132
8	131
9	130
10	129
11	128
12	127
13	126
14	125
15	124
16	123
17	122

e articles of
and 1861 :
1861.
454,963
663,700
9,372,615
3,681,468
18,244,631
289,130
244,513
154,718
33,305,768

NINTH MONTH.

SEPTEMBER.

30 DAYS.

Days of the			MEMORANDA.	M's	Days to end of Year.
M.	W.	Y.		Age.	
1	Tu.	244		18	121
2	W.	245		19	120
3	Th.	246		20	119
4	Fr.	247		21	118
5	Sa.	248		22	117
6	Su.	249		23	116
7	Mo.	250		24	115
8	Tu.	251		25	114
9	W.	252		26	113
10	Th.	253		27	112
11	Fr.	254		28	111
12	Sa.	255		29	110
13	Su.	256		0	109
14	Mo.	257		1	108
15	Tu.	258		2	107
16	W.	259		3	106
17	Th.	260		4	105
18	Fr.	261		5	104
19	Sa.	262		6	103
20	Su.	263		7	102
21	M.	264		8	101
22	Tu.	265		9	100
23	W.	266		10	99
24	Th.	267		11	98
25	Fr.	268		12	97
26	Sa.	269		13	96
27	Su.	270		14	95
28	M.	271		15	94
29	Tu.	282		16	93
30	W.	273		17	92

DISCOVERIES OF THE MICROSCOPE.—Lenwenhoeck tells us of animated insects seen with the microscope, of which twenty-seven millions would only be equal to a mite. Insects of various kinds are observable in the cavities of a common grain of sand. Mold is a forest of beautiful trees, with its branches, leaves, flowers, and fruit fully discernible. Butterflies are fully feathered. Hairs are hollow tubes. The surface of our bodies is covered with scales like a fish; a single grain of sand would cover one hundred and fifty of these scales; and a single scale covers five hundred pores yet through these narrow openings the perspiration exudes like water through a sieve—how minute must be its particles! The mite makes five hundred steps in a second! Each drop of stagnant water contains a world of animated beings, swimming with as much liberty as whales in the sea. Each leaf has a colony of insects grazing on it like an ox in a meadow.

TENTH MONTH.

OCTOBER.

31 DAYS.

Days of the			MEMORANDA.	M's	Days
M.	W.	F.		Age.	to end of Year.
1	Th.	274		18	91
2	Fr.	275		19	90
3	Sa.	276		20	89
4	Su.	277		21	88
5	M.	278		22	87
6	Tu.	279		23	86
7	W.	280		24	85
8	Th.	281		25	84
9	Fr.	282		26	83
10	Sa.	283		27	82
11	Su.	284		28	81
12	M.	285		29	80
13	Tu.	286		0	79
14	W.	287		1	78
15	Th.	288		2	77
16	Fr.	289		3	76
17	Sa.	290		4	75
18	Su.	291		5	74
19	M.	292		6	73
20	Tu.	293		7	72
21	W.	294		8	71
22	Th.	295		9	70
23	Fr.	296		10	69
24	Sa.	297		11	68
25	Su.	298		12	67
26	M.	299		13	66
27	Tu.	300		14	65
28	W.	301		15	64
29	Th.	302		16	63
30	Fr.	303		17	62
31	Sa.	304		18	61

THE UPS AND DOWNS OF WHEAT.—Mr. G. Wren Hoskyns writes to the Times:—“For no less a period than thirty-two years, ever since 1827, the price of wheat has moved in quadrennial periods—four years up, and four years down—with a regularity so steady and invariable that it is difficult to cast one’s eyes over the scale of annual averages and escape the impression it conveys of a perfect natural cycle. No expansion into verbal statement will do justice to the expressive tale which the diagram of annual prices affords to the eye. Briefly told, however, and omitting fractional figures, it is as follows: From 1827 to 1831, the first quadrennial period, the price of wheat rose from 58s in the first named year to 66s in the last. Thence to 1856 it fell by regular annual steps, 58s, 22s and 46s to 39s. In the next four years it rose again

ELE

Dr

M.

1
2
3
4
5
6
7
8
9
10
11
12
13
14
15
16
17
18
19
20
21
22
23
24
25
26
27
28
29
30

with e
graduat
and 54
the fig
again l
1855;
69s an
pired, 1

Man
factorie
of 1,200
to 9,200

31 DAYS.

ELEVENTH MONTH.

NOVEMBER.

30 DAYS.

Days of the			MEMORANDA.	MPs	
M.	W.	Y.		Age.	Days to end of Year.
1	Su.	305		19	60
2	Mo.	306		20	59
3	Tu.	307		21	58
4	W.	308		22	57
5	Th.	309		23	56
6	Fr.	310		24	55
7	Sa.	311		25	54
8	Su.	312		26	53
9	M.	313		27	52
10	Tu.	314		28	51
11	W.	315		0	50
12	Th.	316		1	49
13	Fr.	317		2	48
14	Sa.	318		3	47
15	Su.	319		4	46
16	M.	320		5	45
17	Tu.	321		6	44
18	W.	322		7	43
19	Th.	323		8	42
20	Fr.	324		9	41
21	Sa.	325		10	40
22	Su.	326		11	39
23	M.	327		12	38
24	Tu.	328		13	37
25	W.	329		14	36
26	Th.	330		15	35
27	Fr.	331		16	34
28	Sa.	332		17	33
29	Su.	333		18	32
30	M.	334		19	31

with equal regularity, through 48, 55s, and 61s to 70s in 1839. Then down, by the gradations of 66s, 61s, and 57s, to 50s in 1843. Up again through 50s, 51s, and 54s to 69s in 1847. Down again in turn, by the regular stages of 50s, 44s, 40s to the figure fearful to agricultural eyes of 38s, in 1851. The next four years it mounted again by the encouraging degrees of 41s, 53s, 72s, to the Crimean altitude of 74s in 1855; whence it has declined, in obedience to the same singular law of succession to 69s and 56s in 1856 and 1857, and to the still lower figure it holds in the year just expired, the third, and happily the penultimate of our present descending series.

Manchester, in England, is the greatest manufacturing city in the world. In its factories and foundries there is employed, daily, a motive steam power equal to that of 1,200,000 horses. This requires 30,000 tons of coal for raising steam, which amounts to 9,200,000 tons per annum.

to the Times ;
e of wheat has
with a regularity
cycle. No ex-
ch the diagram
fractional
d, the price of
e to 1856 it fell
rs it rose again

TWELFTH MONTH.

DECEMBER.

31 DAYS.

Days of the			MEMORANDA.	MDs Age.	Days to end of Year.
M.	W.	V.			
1	Tu.	335		20	30
2	W.	336		21	29
3	Th.	337		22	28
4	Fr.	338		23	27
5	Sa.	339		24	26
6	Su.	340		25	25
7	M.	341		26	24
8	Tu.	342		27	23
9	W.	343		28	22
10	Th.	344		29	21
11	Fr.	345		0	20
12	Sa.	346		1	19
13	Su.	347		2	18
14	Mo.	348		3	17
15	Tu.	349		4	16
16	W.	350		5	15
17	Th.	351		6	14
18	Fr.	352		7	13
19	Sa.	353		8	12
20	Su.	354		9	11
21	M.	355		10	10
22	Tu.	356		11	9
23	W.	357		12	8
24	Th.	358		13	7
25	Fr.	359		14	6
26	Sa.	360		15	5
27	Su.	361		16	4
28	M.	362		17	3
29	Tu.	363		18	2
30	W.	364		19	1
31	Th.	365		20	0

BIRTHS, MARRIAGES AND DEATHS.---During the last fifteen years, that is to say since 1845, 9,178,631 births, 6,163,403 deaths, and 2,285,520 marriages have been officially registered in England and Wales. The population, which amounted to about 16,720,000 in 1845, was estimated at about 19,740,000 in 1859, being an increase of about 18.06 per cent, or 1.20 per cent annually. This increase, it should be remembered, has taken place, notwithstanding a considerable emigration and several wars of more or less magnitude. In France the population, notwithstanding a comparatively feeble emigration, has only increased in the same period from 3 to 4 per cent.

Not to hear conscience is the way to silence it.

31 DAYS.

MPs Age.	Days to end of Year.
20	30
21	29
22	28
23	27
24	26
25	25
26	24
27	23
28	22
29	21
0	20
1	19
2	18
3	17
4	16
5	15
6	14
7	13
8	12
9	11
10	10
11	9
12	8
13	7
14	6
15	5
16	4
17	3
18	2
19	1
20	0

that is to say
 have been offi-
 cated to about
 an increase of
 and be remem-
 several years
 g a compar-
 4 per cent.

Memoranda and Resolutions

FOR MDCCCLXIII.

[This section contains the main body of the document, which is currently blank.]

KERR, BROWN & CO.,

1863.

JANUARY.

FIRST MONTH.

Days.

Memoranda, Bills Due, &c.

<i>John A. Bruce Ho Hamilton</i>	
<i>Mangel wadget long red per B</i>	<i>20 1/4</i>
<i>" yellow globe "</i>	<i>20</i>
<i>White Belgium Carrot</i>	<i>" 38</i>
<i>Brown Mustard</i>	<i>" 20</i>
<i>White "</i>	<i>" 20</i>
<i>Top onion sets \$5 bush. = qt.</i>	<i>16</i>
<i>Pears Sugar calabre pods</i>	<i>" 50</i>
<i>Turnip flat dutch B</i>	<i>50</i>
<i>" white globe "</i>	<i>22</i>
<i>" yellow Aberdeen "</i>	<i>22</i>
<i>" Savoy purple top imp^d</i>	<i>22</i>
<i>" " " East Lothian "</i>	<i>22</i>

1
Thurs.
12
Frid.
13
Sat.
14
Sun.

Nov 2
"
"
3
"
"
4
"
"
5
"
6
7
8
9
"
10
"
11
12
13
14

FIRST MONTH.

HAMILTON, C. W.
 DAYS XXXI. JANUARY. 1863.

Nov
 20 4
 20
 38
 20
 20
 16
 50
 50
 20
 22
 22

Date.	Account of Cash.	Received.	Paid.
Nov 2	Cash in hand	93 25	
"	" for Store	12 42	
"	" P.O.	1 00	
3	" for Store	10 00	
"	" P.O.	50	
"	" S. School	38 21	
4	Paid R. Drisbett		36 40
"	Cash for Store	10 67	
"	" P.O. 120.90	1 25	
5	Paid Express out		10 75
"	Cash store $\frac{7.20}{1.30}$ P.O. $\frac{1.30}{65}$	8 50	
6	" " $\frac{4.20}{P.O. 65}$	4 85	
7	" " $\frac{5.27}{P.O. 2.55}$	7 82	
9	Pd. J. Vailley pork	" "	10 00
"	Pd. J. Belton	" "	30 00
"	Rec'd Store $\frac{8.15}{P.O. 4.45}$	12 60	
10	Pd. Express Chge for Inpsoll	" "	50
"	Rec'd Store $\frac{7.1424}{P.O. 1.072}$	8 50	
11	Pd J. Phelps on Arthour		3 75
"	Rec'd Store $\frac{7.62}{P.O. 72}$	8 34	
12	Pd for Copy books		1 13
"	" Taxes		94
"	Rec'd Store $\frac{12.10}{P.O. 1.15}$	13 25	
13	Pd J. Fletcher		8 00
"	Rec'd Store $\frac{2.10}{P.O. 1.75}$	8 85	
14	Pd School Taxes		89
"	Rec'd Store $\frac{6.43}{P.O. 65}$	7 08	
"	Pd Freight 3.		10 04

247 09 112 40

KERR, BROWN & CO.

1863.	JANUARY.	FIRST MONTH.
Days.	Memoranda, Bills Due, &c.	
5	Empty space for memoranda	
Mon.		
6		
Tues.		
7		
Wed.		
8		
Thurs.		
9		
Frid.		
10		
Sat.		
11		
Sun.		

DAYS
Date.

16

17

18

19

" "

20

21

22

" "

24

" "

25

26

" "

27

" "

" "

" "

28

30

FIRST MONTH.

HAMILTON, C. W.

DAYS XXXI.

NOVEMBER

1863.

Date.	Account of Cnsl.	Received.	Paid.
16	Brotford Rec ^d Store 9 ⁰⁰	247 09	112 40
"	" P.O.	9 85	
	Pd for Paper & Envelopes		2 63
17	Rec ^d for Store 6.55 P.O. 85	7 40	
18	" " 8.15 " 1.40	7 55	
19	Paid J. Fletcher		10 00
"	Rec ^d for Store 8.82 P.O. 1.70	10 52	
20	Paid J. Childs 1/2		152 61
"	" Paterson		3 00
"	" Candies		1 00
	Rec ^d Store 8.12 P.O. 1.10	9 22	
21	" " 7.80 " 1.00	8 80	
23	Paid for Sewing Machine		1 17
"	Rec ^d Store 11.94 P.O. 2.25	14 19	
24	Paid for matches 1.62		2 00
"	Rec ^d Store 6.27 P.O.	7 29	
25	" " 12.05	12 80	
26	Paid for matches		60
"	Rec ^d Store 6.70 P.O. 2.42	9 12	
27	Paid Belton		8 00
"	" D. White		10 00
"	" Candies		1 92 1/2
"	Rec ^d Store 7.17 1/2 P.O. 2.44	9 57 1/2	
28	" " 6.62 P.O. 2.65	9 27	
30	" " 6.72 " 1.50	8 72	
	Cash in hand	372 89	44 05
	minus		3 51
		372 89	47 89

KERR, BROWN & CO.

1863.

JANUARY.

FIRST MONTH.

Days.

Memoranda, Bills Due, &c.

12	Mon.	
13	Tues.	
14	Wed.	
15	Thur.	
16	Fri.	
17	Sat.	
18	Sun.	

DAYS	Date.
1	
"	
"	
2	
"	
3	
4	
5	
7	
8	
"	
9	
"	
10	
11	
12	
14	
"	
15	
16	
17	
18	

HAMILTON, C. W.

FIRST MONTH.

DAYS XXXII

JANUARY.

1863.

Date.	Account of Cash.	Received.	Paid.
	Balance in hand	604 05	
1	Paid for Wash/Cryptats		1 70
"	" " flannel		1 88
"	Rec ^d from Store 3.20 P.O. 1.85	5 05	
2	Pd. P.H. 7.48 } S. Schum 6.00 } N. Warsaw 3.40 Sp. 6.00 } Flannel 6.00 Dist ^o }		29 52
	Rec ^d from Store 4.50 P.O. 2.45	6 95	
3	" " 5.25 " 1.22	6 47	
	Pd. J. Watson H ^o		30 00
4	Rec ^d from Store 6.15 P.O. 2.65	9 00	
"	" of J. Spiers 2.20	2 00	
5	" Store 9.82 P.O. 2.20	12 00	
	Pd. Patterson 2.35		6 00
7	Rec ^d Store 9.67 P.O. 2.35	12 02	
8	Paid D. White & liquor		32 10
"	Rec ^d Store 9.75 P.O. 1.92	6 7	
9	Pd for fish for Detroit		2 52
"	Rec ^d Store 8.05 P.O. 9.05	9 10	
"	Pd. S. School		2 25
10	Rec ^d Store 5.25 P.O. 1.45	6 70	
11	" " 15.37 " 1.75	17 12	
12	Pd. for 1/2 bush		3 5
12	Rec ^d Store 5.40 P.O. 1.05	6 45	
14	Pd. G. Schrapnell 7.75		17 00
"	Rec ^d Store 8.50 P.O. 1.75	10 25	
15	" for 1/2 bush 7.00	15 42	
"	" Store 3.00	6 3 60	
16	" " 12.07 P.O. 2.70	14 17	
17	Pd. G. Childs 10.95 } C. Childs 18.32 } B.H. 7.134 }		86 61
"	Rec ^d Store 3.25 P.O. 80	4 05	
18	Pd. Taxe B.H.H.		1 56

234 07 210 49

KERR, BROWN & CO.

1863.

JANUARY.

FIRST MONTH.

Days.

Memoranda, Bills Due, &c.

DAYS

Date.

25	Sat.	Fri.	23	22	Wed.	21	Tues.	20	Mon.	19	
Sun.	St. Davids John Butler & Jy. Uticas & George Evans Gord. Graham Alud P. McLean James Smith!	St. Pauline's Am. Gazette Am. Mitchell Chicago Marine Samuel Black Samuel Brown R. Mobility St. Andrews Stephen Andrews H. B. B. B. W. W. Watson Alu. Watson	St. Pauline's Am. Gazette Am. Mitchell Chicago Marine Samuel Black Samuel Brown R. Mobility St. Andrews Stephen Andrews H. B. B. B. W. W. Watson Alu. Watson	St. Pauline's Am. Gazette Am. Mitchell Chicago Marine Samuel Black Samuel Brown R. Mobility St. Andrews Stephen Andrews H. B. B. B. W. W. Watson Alu. Watson	St. Pauline's Am. Gazette Am. Mitchell Chicago Marine Samuel Black Samuel Brown R. Mobility St. Andrews Stephen Andrews H. B. B. B. W. W. Watson Alu. Watson	St. Pauline's Am. Gazette Am. Mitchell Chicago Marine Samuel Black Samuel Brown R. Mobility St. Andrews Stephen Andrews H. B. B. B. W. W. Watson Alu. Watson	St. Pauline's Am. Gazette Am. Mitchell Chicago Marine Samuel Black Samuel Brown R. Mobility St. Andrews Stephen Andrews H. B. B. B. W. W. Watson Alu. Watson	St. Pauline's Am. Gazette Am. Mitchell Chicago Marine Samuel Black Samuel Brown R. Mobility St. Andrews Stephen Andrews H. B. B. B. W. W. Watson Alu. Watson	St. Pauline's Am. Gazette Am. Mitchell Chicago Marine Samuel Black Samuel Brown R. Mobility St. Andrews Stephen Andrews H. B. B. B. W. W. Watson Alu. Watson	St. Pauline's Am. Gazette Am. Mitchell Chicago Marine Samuel Black Samuel Brown R. Mobility St. Andrews Stephen Andrews H. B. B. B. W. W. Watson Alu. Watson	St. Pauline's Am. Gazette Am. Mitchell Chicago Marine Samuel Black Samuel Brown R. Mobility St. Andrews Stephen Andrews H. B. B. B. W. W. Watson Alu. Watson

KERR, BROWN & CO.

1863.

JANUARY.

FIRST MONTH.

Date.

Memoranda, Bills Due. &c.

26			
Mon.		C. Du. loan	$\begin{array}{r} \text{Nov } 500 \\ \text{Jan } 8 \\ \hline 22 \end{array}$
		H. L. Jr	$\begin{array}{r} 500 \\ 23 \\ \hline 18.38 \end{array}$
27		H. F. M	$\begin{array}{r} 28 \\ \hline 10.00 \\ \text{Jan } 4 \end{array}$
Tues.		"	$\begin{array}{r} 10.00 \\ \hline \text{Jan } 4 \\ 11.00 \end{array}$
		J. Soo	$\begin{array}{r} 500 \\ \hline 5 \end{array}$
28		Whitlaw	$\begin{array}{r} 500 \\ \hline 5 \end{array}$
Wed.		M/O.	42.89
		Expn	5.90
29			
Thur.			
30			
Fri.			
31			
Sat.			
Sun.			
1			

FEBRUARY.

18		
19		
21		
22		
23		
24		
25		
26		
28		
29		
30		
31		
1		
2		
4		
5		
6		
7		

HAMILTON, C. W.

DAYS XXXI.

JANUARY.

1863.

Date.	Account of Cash,	Received.	Paid.
		234 07	210 49
18	Paid Store <u>8.38</u> <u>1.25</u> P.O.	9 63	-
19	Paid Scudder's Woodshed	-	4 30
"	Paid Store <u>20.65</u> <u>1.09</u> P.O.	21 73	-
21	" " <u>2.50</u> <u>2.50</u> "	12 00	-
22	Paid Books &c	-	1 40
"	Paid Store <u>11.00</u> P.O. <u>1.05</u>	12 05	-
23	Paid J. Fletcher <u>1.45</u>	-	10 00
"	Paid Store <u>6.45</u> P.O.	7 90	-
24	Paid J. Baker <u>12.00</u> White	15 71	27 00
"	Paid P.O. <u>1.20</u> Store <u>12.00</u>	13 20	-
"	Paid for Sugar	-	1 00
"	Paid for Apples	2 05	-
25	" " Store <u>8.05</u> P.O. <u>30</u>	8 25	-
26	" " " <u>11.22</u> " <u>72</u>	11 94	-
28	" " " <u>8.70</u> " <u>2.00</u>	10 70	-
29	Paid Blk] <u>1.10</u> night <u>28</u>	-	1 38
"	Paid Store <u>13.67</u> P.O. <u>50</u>	14 17	-
30	Paid for Moccasin <u>2.22</u>	-	4 50
"	Paid Store <u>9.20</u> P.O. <u>80</u>	11 42	-
31	" " " <u>4.27</u> "	5 07	114 17
	Balanc	374 18	374 18
January		114 17	-
1	Paid Store <u>13.65</u> P.O. <u>35</u>	4 00	-
2	" " " <u>5.38</u> " <u>2.60</u>	5 38	-
4	" " " <u>10.05</u> P.O.	12 65	-
"	Paid Scudder's Woodshed <u>3.38</u>	-	4 13
"	" " Warwick <u>1.84</u> P.O. <u>4</u>	-	5 22
5	" " Baker <u>12.00</u> White <u>12.00</u>	-	27 00
"	Paid Store <u>5.10</u> P.O. <u>68</u>	5 75	11 50
"	Paid Albert J. Mann	-	-
6	Paid Store <u>2.52</u> P.O. <u>1.50</u>	4 02	-
7	" " " <u>7.00</u> " <u>2.55</u>	9 65	-
		155 56	37 85

KERR, BROWN & CO.

1863.

FEBRUARY.

SECOND MONTH.

Days.	Memoranda, Bills Due, &c.
2	<i>N. Verbitt Ho due 22/25 Jan</i>
Mon.	<i>118.65</i>
	<i>ada 18 25</i>
	<i>Feb 1 23 138.13 l/p Paid</i>
	<i>75.00</i>
	<i>63.13</i>
	<i>balce note 3 mo/d due due 24/27 ap</i>
3	
Tues.	
4	
Wed.	
5	
Thur.	
6	
Fri.	
7	
Sat.	
8	
Sun.	

DAYS	Date.
8	1/8
9	1/9
11	1/11
12	1/12
13	1/13
14	1/14
15	1/15
"	1/16
16	1/16
18	1/18
19	1/19
20	1/20
21	1/21
"	1/22
22	1/22
"	1/23
23	1/23
"	1/24
"	1/25
25	1/25
26	1/26
27	1/27
"	1/28
28	1/28
"	1/29
"	1/30

OND MONTH.

HAMILTON, C. W.

DAYS XXVIII.

FEBRUARY.

1863.

Date.	Account of Cash.	Received.	Paid.
Jan	Acct for d.	155 56	37 85
8	Rec ^d Store $\frac{12.65}{4.77}$ $\frac{2.05}{1.20}$	14 90	
9	" " "	5 92	
11	Pd freight 71 Jan		50
"	Rec ^d Store $\frac{7.50}{17.15}$ $\frac{2.12}{9.59}$	9 62	
12	" " $\frac{1.05}{6}$ " $\frac{7.60}{J. Flaherty}$	26 74	
13	Pd for Spools 6		8 65
13	Rec ^d Store $\frac{5.85}{13.12}$ $\frac{1.17}{2.35}$	7 02	
14	" " "	15 47	
15	Pd. Nellis mant -		2 00
"	" R. Nesbit team etc		75 00
"	Rec ^d Store $\frac{10.00}{11.25}$ $\frac{1.45}{1.30}$	11 65	
16	" Pd H. J. M. Loan (25.00)		8 00
18	Rec ^d Store $\frac{2.47}{5.62}$ $\frac{1.67}{6.0}$	11 29	
19	" Pd for fin $\frac{3.21}{11.50}$ $\frac{1.20}{1.17}$	4 22	
20	Rec ^d Store $\frac{5.35}{}$ $\frac{1.17}{}$	6 52	
"	Pd. A. Greenleaf -		2 95
21	" Patterson -		12 00
"	Rec ^d Store $\frac{9.38}{}$ $\frac{1.60}{}$	10 98	
22	Pd P.O. $\frac{4.55}{}$ $\frac{7.25}{}$		83 03
"	Rec ^d Store $\frac{4.55}{}$ $\frac{7.25}{}$	5 80	
"	" of Albert J. Hunt	140 00	
23	Pd Belu $\frac{10.00}{20.00}$ $\frac{15.00}{25}$		55 00
"	" Shropshire 2 Shute		45 00
"	Rec ^d Store $\frac{10.05}{}$ $\frac{1.45}{}$	11 50	
25	" " $\frac{8.42}{}$ $\frac{1.80}{}$	9 22	
26	" " $\frac{12.45}{}$ $\frac{1.90}{}$	14 35	
"	Pd Scudder in Myrtle		11 22
27	" " $\frac{6.20}{}$ $\frac{6.00}{}$		2 37
"	Rec ^d Store $\frac{6.20}{}$ $\frac{6.00}{}$	6 80	
28	Pd Scudder in Myrtle		4 77
"	Rec ^d Store $\frac{4.35}{}$ $\frac{28.00}{}$	32 35	
"	Pd Wm. Brooks		35 00
		414 26	345 34

KERR, BROWN & CO.

1863.

FEBRUARY.

SECOND MONTH.

Days.

Memoranda, Bills Due, &c.

9	Mon.	<p><i>Med Br n/o 9¹³.</i> <i>Sou Brk 52378 Bk 0 . 13. 13</i> <i>Feb 16</i></p>
10	Tues.	
11	Wed.	
12	Thur.	
13	Fri.	
14	Sat.	
15	Sun.	

DAY
Date.

Jan
29
"
30
"

Feb 1
"
2
"
3
4
"
5

"
6
8

9
10
11
12
13
15
16

"
17

18

HAMILTON, C. W.

SECOND MONTH.

DAYS XXVIII.

FEBRUARY.

1863.

Date.	Account of Cash.	Received.	Paid.
Jan		414 26	375 54
29	Pd J. Fletcher 1.80		15 00
"	Rec ^d Store 3.42 P.O.	5 22	.
30	Pd for fish & lemon 1.62 1/2	-	9 30
"	Rec ^d Store 7.50 P.O.	9 12	
	Balance down	428 60	28 96
			428 60
	Balance down	28 96	
Feb 1	Pd for Valentin Spens		14 50
"	Rec ^d Store 5.60 P.O. 2.70	8 30	
			88
2	Pd R. Kearsley Coffee 5.00		5 88
"	Rec ^d Store 7.45 P.O. 55	8 30	
3	" " 4.22 " 1.65	5 84	
4	Pd for fish, Skope 6.00		6 20
"	Rec ^d Store 3.00 P.O. 77	3 77	
5	Pd 28 1.56 P.O. 1.00		2 50
"	Rec ^d Store 8.20 P.O. 9.07	9 27	
6	" " 13.95 " 70	14 65	
8	Pd J. A. Fletcher		16 00
"	Rec ^d Store 4.10 P.O. 5.20	9 30	
9	" " 2.80 " 1.20	7 40	
10	" " 6.10 " 1.85	7 95	
11	" " 9.00 " 1.00	10 00	
12	" " 5.20 " 1.65	7 55	
13	" " 7.85 " 1.45	9 30	
15	" " 9.80 " 3.05	12 85	
16	Pd M. L. P. 1.85		13 13
"	Rec ^d Store 4.87 P.O.	6 72	
17	Paid for fish 3.25	3 95	7 93
"	Rec ^d Store P.O.	1 00	
18	" J. D. P. M. 12.75 " 1.57	14 32	
		166 06	56 14

KERR, BROWN & CO.,

FEBRUARY.

SECOND MONTH.

1863.

Days.

Memoranda, Bills Due, &c.

16	Mon.	G. Childs & Co. 13th March due 2/5 near \$ 392.00 200
17	Tues.	Grand Int Due 5/8 June 192.00 3.47 195.47 Paid June 6th
18	Wed.	
19	Thür.	
20	Fri.	
21	Sat.	
22	Sun.	

Feb 16
17
18
19
20
21
22
23
24
25
26
27
28
29
30
Mar 1
2
3
4

HAMILTON, C. W.

COND MONTH.

DAYS XXVIII.

FEBRUARY.

1863.

Date.	Account of Cash.	Received.	Paid.
	Prof ford	166 06	56 14
Feb 14	Pd Baluck oil		14 00
"	" Coombs		1 74
"	Rec ⁿ store $\frac{4.14}{p.o. 97}$	5 11	
20	Pd for Coombs		2 00
"	Rec ⁿ store $\frac{12.05}{p.o. 1.80}$	13 85	
22	" " $\frac{9.65}{p.o. 1.55}$	11 20	
23	" " $\frac{6.50}{p.o. 75}$	7 25	
24	" " $\frac{9.75}{p.o. 2.32}$	12 07	
"	Pd for flour		9 63
"	" Det on M. Shear		00
25	" freight $\frac{48}{p.o. 1.40}$		48
"	Rec ⁿ store $\frac{9.50}{p.o. .90}$	10 90	
26	" " $\frac{10.00}{p.o. .90}$	10 90	
"	" Dypren	2 40	
27	" T. S. Miller let	20 00	
"	Pd Madway		7 00
"	Rec ⁿ H. F. Martin	20 00	
"	" J. Spiers Loan	50 00	
"	" store $\frac{10.65}{p.o. 60}$	11 25	
29	Pd J. Childs $\frac{46}{p.o. 1.02}$		200 00
"	Rec ⁿ store $\frac{7.02}{p.o. 1.02}$	8 04	298 99
	Balance down	349 03	59 04
Mar 1	Pd Knight oil		56
"	" Dis ⁿ on silo		50
"	Rec ⁿ store $\frac{4.00}{p.o. 2.25}$	6 25	
2	" " $\frac{7.07}{p.o. 87}$	7 94	
3	Pd J. Spiers		50 00
"	Rec ⁿ $\frac{3.85}{p.o. 1.25}$	5 10	
		77 33	51 06

KERR, BROWN & CO.

1863.

FEBRUARY.

SECOND MONTH.

Days,

Memoranda, Bills Due, &c.

23		<i>Coon. A.T. m.</i>	10.00	
Mon.		<i>" J. D. m.</i>	7.00	<i>Pd</i>
		<i>" C. D. m.</i>	<i>7.00</i>	
		<i>" M. P. m.</i>	<i>8.00</i>	<i>Pd</i>
24		<i>" C. D. m.</i>	<i>7.00</i>	
Thes.				
25				
Wed.				
26				
Thur.				
27				
Fri.				
28				
Sat.				
1		MARCH.		
Sun.				

DAYS

Date.

<i>Mar 4</i>	1
5	2
7	3
8	4
9	5
10	6
11	7
12	8
14	9
15	10
16	11
17	12
18	13
19	14
21	15
22	16
23	17
24	18

HAMILTON, C. W.

ND MONTH.

DAYS XXXI.

FEBRUARY.

1863.

Date.	Account of Cash.	Received.	Paid.
	<i>amount bal for d.</i>		
Mar 4	3.00 20 3.98	76 33	51.06
	<i>pd apples Dist freight</i>		6 98
	Rev ^d Store 4.00 p.o. 95	4 95	
5	18.27 " 1.75	20 02	
	<i>pd Cap books D. White 20.00</i>		20 95
7	10.00 <i>freight</i>		13 38
	Rev ^d Store 7.85 p.o. 2.35	10 20	
8	10.45 " 1.40	11 85	
9	<i>pd " Candies 1.50</i>		1 50
	<i>" G. Skrapule 10 p.</i>		10 00
	Rev ^d Store 9.48 p.o. 70	10 18	
10	6.38 " 1.25	7 63	
11	<i>pd Candies 2.75</i>		5 75
	<i>" 3.00</i>		
	Rev ^d Store 4.50 p.o. 3.15	7 65	
12	<i>pd Fletcher 10.50</i>		10 00
	<i>Rev^d Store 8.00 p.o. 1.50</i>	9 50	
14	8.85 " 2.72	11 37	
15	<i>pd for matters</i>		1 00
	Rev ^d Store 5.70 p.o. 1.27	6 97	
16	12.82 " 1.18	14 100	
	<i>pd freight 39 freight 6.50</i>		6 89
17	Rev ^d Store 5.15 p.o. 70	5 85	
18	9.25 " 40	9 65	
	<i>pd J. A. Fletcher</i>		13 00
19	Rev ^d Store 6.35 p.o. 1.00	7 35	
21	<i>pd Freight Crank 1.32 1.46</i>		8 63
	Rev ^d Store 11.75 p.o. 2.00	14 47	
22	6.10 " 1.00	7 10	
23	<i>pd Fletcher 10.00</i>		12 00
	<i>Rev^d Store 8.75 p.o. 1.75</i>	10 50	
24	8.40 " 42	8 82	
	<i>pd " J. A. Fletcher</i>		10 00

2543917286

KERR, BROWN & CO.

1862.

MARCH.

THIRD MONTH.

Days.	Memoranda, Bills Due, &c.	
2	<i>Loan</i>	<i>11 Bils 45.00</i> <i>10 Bils 40.00</i> <i>" 6.00</i>
3	<i>Miss Pajon Loan 8.00</i>	
1	<i>" PD Loan 11.38</i>	
7	<i>Rec note 6.90</i>	<i>19.38</i>
1	<i>Ch 10.00</i>	<i>9.38</i> <u><i>2.48</i></u>
4		
5		
6		
7		
8		
9		

Mon.

Tues

Wed.

Thur.

Fri.

Sat.

Sun.

DAY	Date
25	
26	
28	
29	
30	
"	
31	
"	
1	
2	
"	
4	
4	
5	
6	
7	
8	
9	
4	

Am 1

HAMILTON, C. W.

THIRD MONTH

DAYS XXXI.

MARCH.

1863.

Date.	Account of Cash.	Received.	Paid.
25	Short but ford.	254 39	172 13
	Pd in Watrous 11.	-	40 00
"	Rec ^d Store <u>12.62</u> P.O. 93	13 55	-
26	" " <u>7.73</u> " 55	8 28	-
"	" " <u>4.28</u> " 55	4 83	-
28	Pd Cummings 1/2	-	4 00
29	Rec ^d Store <u>4.48</u> P.O. 1.15	5 63	-
30	Pd D. Whit	-	30 00
"	Rec ^d Store <u>7.65</u> 1.15	8 80	-
31	Pd J. A. Fletcher in full	-	5 00
"	Rec ^d Store <u>5.83</u> P.O. 2.60	8 43	-
	Pd House profits	-	1 50
	" 2 nd Gen -	-	1 50
	Balance down	-	46 78
		303 91	303 91
	Balance b ^y down	46 78	-
Apr 1	Paid for miles 1.25	-	65
"	Rec ^d Store <u>7.16</u> P.O. 4.00	8 41	-
2	Pd in Woodstock	-	4 00
"	" Sunday School	-	10 08
4	Rec ^d Store <u>5.60</u> P.O. 1.55	6 80	-
"	" " <u>7.18</u> " 1.38	8 43	-
4	Pd note on Pigeon <u>11.38</u> 2.90	-	2 48
5	Rec ^d Store <u>14.10</u> P.O. 2.55	16 65	-
6	" " <u>2.80</u> " 3.95	9 75	-
7	" " <u>4.77</u> " 2.00	6 77	-
7	" " <u>10.25</u> " 1.38	11 63	-
9	Pd J. A. Fletcher	-	5 12
"	Rec ^d Store <u>4.30</u> P.O. 73	5 03	-
		118 58	22 33

KERR, BROWN & CO.

1863.	MARCH.	THIRD MONTH.
Days.	Memoranda, Bills Due, &c.	
9 Mon.	J. Balmain due 18/21 ap pd 20	200.70 <u>100.00</u> 100.70
10 Tues.	Let to hol. 18/21 June pble at St Cath Pd June 20	1.70 <u>102.40</u>
11 Wed.		
12 Thur.	Loan J. Spiess	\$ 50.00 <u>12.00</u> 70.00
13 Fri.	Loan to W. Combs - X " S.W. Combs " C. Martin " H.F. M - " J. Vick y	2.00 2.00 5.50 20.00
14 Sat.		
15 Sun.		

DAYS	Date.
11	
"	
12	
13	
14	
15	
16	
18	
"	
29	
"	
20	
"	
21	
22	
"	
23	
"	
25	
26	
"	
27	
28	
"	
"	
29	
"	
30	

HAMILTON, C. W.

RD MONTH.

DAYS XXXI.

MARCH.

1853.

Date.	Account of Cash.	Received.	Paid.
11	Amt ford	118 58	32 33
"	Pd Mission		1 00
"	Rec ^d Store 14.65 P.O. 2.00	16 65	
12	" " 7.28 " 70	7 98	
13	" " 4.42 " 45	4 87	
14	" " 5.70 " 80	6 50	
15	" " 3.70 " 1.60	5 30	
16	" " 10.73 " 7.73	18 46	
18	" " 5.48 " 2.60	8 08	2 81
"	Pd for Apples		
19	Rec ^d Express	1 10	
"	" Store 2.75 P.O. 4.20	6 95	
"	Pd. J. Shapuli (14 th)		5 00
"	" Sundries for Blotter		6 05
20	Rec ^d Store 6.70 P.O. 2.80	9 50	
"	Pd Note J. Palmer		100 00
21	Rec ^d Store 6.62 P.O. 50	7 12	
22	" P/M Chicago	12 50	
"	" Store 18.43 P.O. 1.35	19 78	
23	Pd P.O. Def		76 61
"	Rec ^d Store 4.25 P.O. 80	5 05	
25	" " 5.32 " 1.80	7 14	
26	Pd Jackson Thread Co		3 00
"	Rec ^d Store 6.38 P.O. 65	7 03	
"	" 5.02 " 65	5 67	
27	" J. Stafford		95
"	" freight		57
"	Rec ^d Store 3.13 P.O. 1.00	4 13	
29	Pd J. Fletcher		20 00
"	Rec ^d Store 9.00 P.O. 1.20	10 20	
30	" " 11.63 " 65	12 28	
"	Pd various Taps 6.25		7 25
"	" Express 2.00		3 93
			46 35

00.70

00.00

00.70

1.70

02.40

20

Balance

KERR, BROWN & CO.,

1863.		MARCH.		THIRD MONTH.	
Days.		Memorandum Bills Due. &c.			
23	Mon.	Nov 5	By Childs \$10 Bk mount p/m 3 mo 5/8 June 195.147 p/m 6		
24	Tues.	Feb 24	By Childs \$10 Bk mount p/m 4 mo 24/27 June 191.82 removed in vol due 30 Sept		
25	Wed.	" 25	West Brothers Bk mount Apr 4 mo 25/28 June 91.54 Paid here 27th		
26	Thurs.	Nov 14/63	Hiltso Prod then Office p/m 6 mo 44/17 May 83.60 paid May 16		
27	Frid.				
28	Sat.		Dr Courtney loan 20.00 Loan of 2 Officers 20.00		
29	Sun.				

DAYS	
Date.	
1	
2	
3	
4	
5	
6	
7	
8	
9	
10	
11	
12	
13	
14	
15	
16	
17	
18	
19	
20	

HAMILTON, C. W.

10 MONTHS

AYS XXXI

1861

1861

Date.	Account of Cash.	Received.	Paid.
	Balance	44 38	
	Rec ^d J. D. Miller on acc ^t	10 00	
2	Rd ^d Store $\frac{4.50}{P.O. 1.00}$	5 50	
3	" " $\frac{2.07}{P.O. 1.07}$	8 24	
4	Pd ^d Sundries for clothes		1 00
"	Rec ^d Store $\frac{11.55}{P.O. 1.00}$	12 55	
5	" " $\frac{13.35}{P.O. 1.82}$	14 17	
	Paid J. School		1 50
6	" R. Nisbett - 10		50 00
"	Rec ^d Store $\frac{6.40}{P.O. 1.00}$	7 40	50
"	Pd ^d 98-		52
7	Rec ^d Store $\frac{7.80}{P.O. 52}$	8 32	
9	Pd ^d J. A. Fletcher		20 25
"	" R. Nisbett - 10		14 05
"	Rec ^d Store $\frac{12.25}{P.O. 3.55}$	15 80	
10	Pd ^d C. Watts on acc ^t		10 00
"	Rec ^d Store $\frac{7.70}{P.O. 75}$	9 95	
11	Pd ^d Patterson $\frac{7.26}{P.O. 8.00}$		15 26
"	Rec ^d Store $\frac{9.30}{P.O. 1.75}$	11 05	
12	" " $\frac{10.60}{P.O. 95}$	11 55	
	Pd ^d fare to London		75
13	Rec ^d Store $\frac{6.08}{P.O. 1.55}$	7 60	
14	" " $\frac{75.35}{P.O. 1.55}$	8 90	
16	Pd ^d Hillon Br ^s		83 60
"	Rec ^d Store $\frac{15.75}{P.O. 3.40}$	19 15	
"	" " $\frac{6.85}{P.O. 70}$	7 55	
18	Pd ^d for onions $\frac{1.50}{P.O. 1.25}$		1 75
"	Rec ^d Store $\frac{9.72}{P.O. 1.75}$	11 46	
19	Pd ^d D. White $\frac{2.42}{P.O. 1.27}$		30 00
"	Rec ^d Store $\frac{7.57}{P.O. 1.27}$	8 84	2 42
		222 40	231 14

75.147
91.82
0 Sebl
91.54
27
16

KERR, BROWN & CO.

	1863.	MARCH.	THIRD MONTH.
Days.	Memoranda, Bills Due, &c.		
30	Mon.	Loan to C.D.M. $\$$ 25 S.M. Courtesy $\$$ 20	
31	Tues.	H.F.M. to Exp Chge <u>50</u> . 00	
APRIL.			
1	Wed.	6 pers. S 107.35 add 50.40 Bills 67.00 <u>134.75</u> 9.00 a/cancel	
2	Thurs.	<u>124.75</u> 30.60 m/o <u>94.15</u> 15.00 Station <u>79.15</u> R. Miles	
3	Frid.	<u>95.15</u> 4.58 H.F.M. 4.57 Brook <u>102.22</u> 25.25 exp <u>101.97</u> Bal from 6 a.m. <u>110.50</u>	
4	Sat.	<u>212.47</u> <u>215.47</u> <u>3.00</u> <u>9.47</u> <u>6.47</u> <u>215.47</u>	
5	Sun.	<u>215.47</u> <u>215.47</u> <u>11.89</u>	

Days.	Date.
20	
21	
22	
23	
24	
25	
26	
27	
28	
30	
" 1	
" 2	
31	
" 1	
" 2	
" 3	
" 4	
" 5	
" 6	
" 7	
" 8	
" 9	
" 10	
" 11	
" 12	
" 13	
" 14	
" 15	
" 16	
" 17	
" 18	
" 19	
" 20	
" 21	
" 22	
" 23	
" 24	
" 25	
" 26	
" 27	
" 28	
" 29	
" 30	
" 31	
" 1	
" 2	
" 3	
" 4	
" 5	
" 6	
" 7	
" 8	
" 9	
" 10	
" 11	
" 12	
" 13	
" 14	
" 15	
" 16	
" 17	
" 18	
" 19	
" 20	
" 21	
" 22	
" 23	
" 24	
" 25	
" 26	
" 27	
" 28	
" 29	
" 30	
" 31	

HAMILTON, C. W.

DAYS XXX.

APRIL.

1863

Date.	Account of Cash.	Received.	Paid.
	Sept brot ford	234 40	231 14
20	Rev Store 9.52 store 62	10 14	
21	Pd Crew ^{5.50}	-	5 50
	Rev store <u>11.25</u> P.O. ^{1.12}	12 37	
23	" " <u>10.88</u> " ^(1.88)	12 46	
24	" " <u>5.25</u> " ³⁵	5 60	
25	" " <u>4.10</u> " ^{1.15}	5 25	
26	" " <u>3.42</u> " ⁶⁷	4 09	
27	" " <u>4.10</u> " ³⁰	4 40	
28	" " <u>12.90</u> " ^{1.25}	114 15	
30	Pd for orange & L Crew		2 44
"	Rev Store <u>14.76</u> P.O. ^{1.52}	13 28	
"	Pd for nails fence		25
31	" Stafford ^{17.85} " ³ Muggill		20 58
"	Rev Store <u>11.10</u> P.O. ⁷⁰	11 80	
"	Pd Newburg Jan Wood		30
"	" Express Chesapeake west Credits		5 01
	Balance on hand		56 05
		321 24	321 24
	Rev Balance on hand	56 05	
1	Pd J. Spies 16 May	20 00	
	Pd " " May 1		20 00
	Rev Store <u>17.40</u> P.O. ^{2.40}	19 80	
2	" " <u>5.10</u> " ³⁰	8 40	
3	" " <u>8.12</u> " ^{1.30}	9 42	
4	" " <u>17.00</u> " ⁷⁰	17 70	
	Pd Hudson Medicines		4 00
	" " "		15
		131 37	24 15

KERR, BROWN & CO.,

1863.

APRIL.

FOURTH MONTH.

Days.

Memoranda, Bills Due, &c.

DAYS

Date.

6	Mon.	
7	Tues.	
8	Wed.	
9	Thurs.	
10	Frid.	
11	Sat.	
12	Sun.	

6/2/1

June

6
 7
 8
 9
 10
 11
 13
 14
 15
 16
 17
 18
 20

HAMILTON, C. W.

DAYS XXX.

APRIL.

1863.

Date.	Account of Cash.	Received.	Paid.
June		131 37	24 15
6	Pd Wheat to Sutor		5 25
"	Rec'd J. Speirs Loan	100 00	
"	" Express	1 40	
"	P'd J. Childs H ^c		195 47
"	Rec'd Store $\frac{8.00}{p.o. 1.10}$	9 10	
"	P'd J.A. Fletcher		20 00
7	Rec'd Store $\frac{8.20}{p.o. 1.27}$	9 47	
6	P'd for ostriches $\frac{3.00}{p.o. 35}$		3 00
"	Rec'd Store $\frac{8.00}{p.o. 35}$	8 42	
9	" " $\frac{5.10}{p.o. 1.20}$	6 30	
10	" " $\frac{8.30}{p.o. 20}$	8 50	
11	" " $\frac{14.20}{p.o. 60}$	14 80	
	P'd freight $\frac{35}{nails 25}$		60
13	Rec'd Store $\frac{9.52}{p.o. 85}$	10 40	
14	" " $\frac{5.25}{p.o. 90}$	6 15	
15	" " $\frac{14.00}{p.o. 65}$	14 65	
16	P'd Key $\frac{63}{nails 15}$ $\frac{25}{dial 25}$		2 03
"	Rec'd Store $\frac{6.35}{p.o. 1.00}$	7 35	
17	P'd Albert $\frac{1.30}{self Explan 1.00}$		2 30
"	Rec'd Store $\frac{5.00}{p.o. 15}$	6 15	
18	P'd J.A. Fletcher		12 00
"	Rec'd Store $\frac{12.15}{p.o. 50}$	12 65	
20	" (H.F. M. 10 00 - 5.50)	0 50	
"	P'd " Loan		8 00
"	" B.P. / Balun.		102 40
"	" J. Speirs $\frac{10.00}{above 40.00}$ $\frac{water 17.00}{p.o. 9.00}$	30 00	
"	M.C. Pratten $\frac{10.00}{p.o. 1.00}$	10 00	9 05
"	Rec'd Henry Loan		
"	" Store $\frac{28.50}{p.o. 2.35}$	30 85	

KERR, BROWN & CO.

1863.

APRIL.

FOURTH MONTH.

Days.

Memoranda, Bills Due, &c.

13	Mon.	
14	Tues.	<p><i>A. Hope Ho Sur offer</i></p> <p><i>Dr. Wray</i> due 2/5 \$ 323. 38</p> <p style="margin-left: 150px;"><i>Nov</i></p> <p style="margin-left: 150px;"><i>mitted Nov 4</i></p>
15	Wed.	<p><i>A. Hope Ho Sur offer</i></p> <p><i>13/ Wray</i> \$ 333. 27</p>
16	Thur.	<p><i>Nov 13/16</i> $\frac{4. 60}{337. 87}$</p> <p><i>on 15/16 Feb 230. 00</i></p> <p><i>Bill 798. 00</i></p> <p><i>J. Spring 587 337. 87 / 106. 00</i></p>
17	Fri.	<p><i>1 here due 1/3 Dec</i></p>
18	Sat.	
19	Sun.	

661

Date	DAYS
1863	
Jan 2	
22	
23	
24	
25	
27	
28	
29	
30	
12	

HAMILTON, C. W.

DAYS XXX.

APRIL.

1863.

Date.	Account of Cash	Received.	Paid.
1863	Acct for	418 56	384 25
Jan 21	Rec'd store <u>6.12</u> P.O. <u>2.30</u>	8 42	.
22	" " <u>10.00</u> " <u>1.05</u>	11 05	.
"	Pd Dis <u>25</u> <u>5</u>	.	30
23	" " <u>80</u> <u>15</u>	.	2 95
"	Rec'd store <u>11.85</u> P.O. <u>1.05</u>	12 90	.
24	Pd Dis <u>1.00</u> Crocks <u>3.28</u>	.	4 28 0
"	Rec'd store <u>7.75</u> P.O.	8 40	.
"	Pd sundries at <u>20</u>	.	3 07
25	Rec'd store <u>2.00</u> P.O. <u>2.10</u>	11 10	.
"	" Soan H. F. Wain	28 00	.
27	" T. D. Hill P/O <u>1.34</u>	19 36	.
"	Pd Cash Brother's note.	.	91 54
"	" J. A. Fletcher	.	12 00
"	" Patterson	.	10 00
"	Rec'd store <u>2.00</u> P.O. <u>2.00</u>	11 "	.
28	Pd Hill on <u>1.34</u>	.	2 34
"	Rec'd store <u>8.85</u> P.O. <u>15</u>	9 00	.
29	" " <u>8.10</u> " <u>70</u>	18 80	.
"	" <u>50</u>	50 00	.
30	" store <u>2.65</u> P.O. <u>40</u>	3 05	.
1863	Pd for Sugar A. Hope	.	25 92
"	" A. Hope P/O on acct	.	48 00
"	" Fare to Loudonville	.	15
	Balance	.	14 24
		599 64	599 64

323. 38

4

27
4 60
7.87

1.00

KERR, BROWN & CO.

1863.

APRIL.

FOURTH MONTH.

	Date.	Memoranda, Bills Due, &c.	
20	Mon.	George Childs J ^c due 30 Aug 122.56	
21	Tues.	do do due ^{30th} 27 Sept 198.81	
22	Wed.	Saut a Habor 15 Nov ^r	
		Out- Bd. 31417 Driv 10	
		" 43045 " 10	
23	Thur.		
		31933 " 10	
		32226 " 10	
		32918 " 5	
		Com " 03976 " Key 10	
		" 11096 " 5	
24	Fri.		
		RR Va 11332 " 5	
		37815 " 5	
		Mk bond 63729 Soud. 10	
		3488 d " 10	
		Muy Dist 19027 4	
25	Sat.		
		3040 4	
		M/o 132 98	
			9.57
26	Sun.	not used	
			230
			337 57

DAY	Date.
1	1
2	2
"	"
4	4
"	"
5	5
"	"
6	6
"	"
7	7
8	8
"	"
9	9
"	"
11	11
12	12
13	13
14	14
15	15
16	16
18	18
19	19

FOURTH MONTH.

HAMILTON, C. W.

DAYS XXX. *July 18th 1863.*

Date.	Account of Cash.	Received.	Paid.
	Balance bro ^d ford	14 24	.
1	Rec ^d Store 12.65 P.O. 25	13 60	.
2	Pd ^d Hlab 1.00 <i>2.60</i> 6.00	.	7 00
"	Rec ^d Store 8.25 P.O. 50	8 75	.
4	Pd ^d Emullopis 88 Freight	.	1 30
"	Rec ^d Store 2.03 P.O.	9 70	.
5	Pd ^d H. F. M. on loan	.	4 00
"	Rec ^d Store 6.60 P.O. 80	7 40	.
6	Pd ^d Freight 1.60 Dist 10	.	1 70
"	Rec ^d Store 12.40 P.O. 1.45	13 85	.
7	" " 4.00 " 65	4 65	.
8	" " 16.82 " 2.20	19 02	.
"	Pd ^d A. Hope 010	.	36 75
9	Rec ^d Store 6.55 P.O. 1.70	8 25	.
"	<i>47 Mr. Dr. Loan 2.00 1.00 10.00</i>	.	13 00
11	J. Spier on loan	.	20 00
"	H. J. Co. to S. A. App. fan	.	30
"	Pd ^d fare <i>15</i>	.	30
"	" R. K. Henthon on a/c	.	5 00
"	Rec ^d 7.50 Store P.O. 1.20	8 70	.
12	" 7.45 " " 55	8 00	.
13	" 10.20 " " 3.12	13 32	.
"	Pd ^d Patterson 35	.	5 0
"	Pd ^d for stamp 60	.	95
14	Rec ^d Store 6.75 P.O. 50	7 55	.
15	" " 5.75 " 1.50	6 25	.
16	" Exp 1.00 Store 12.00 P.O.	113 20	.
"	Pd ^d on flour	.	2 00
18	Rec ^d Store 11.55 P.O. 6.67	18 22	.
19	" " 13.20 " 1.20	15 00	.

Aug 122.56

Apr 198.81

Nov 7

10

10

10

10

5

10

5

5

5

10

10

4

4

98
9.57

230

37 87

190 70 97 30

KERR, BROWN & CO.,

	1867.	APRIL.	FOURTH MONTH.
	Days.	Memoranda, Bills Due. &c.	
27	Mon.		
28	Tues.		
29	Wed.		
30	Thurs.		
..... MAY.			
1	Frid.		
2	Sat.		
3	Sun.		

60

DAYS	Date.
	July
	26
	27
	"
	28
	"
	29
	"
	30
	"
	27
	"
	28
	"
	"
	29
	"
	"
	30

HAMILTON, C. W.

DAYS XXX.

APRIL.

1863.

Date.	Account of Cash.	Received.		Paid.	
July	Am't brot forw'd	190	70	97	30
20	Rec'd Stou 8.05 P.O. 1.75	9	80	10	00
21	Pd flour Mayhe
"	Rec'd Stou 16.50 P.O. 85	17	35	49	13
22	Pd P/O aut
"	Rec'd Stou 12.00 P.O. 1.65	12	65	.	.
23	Pd Mayhe 5.60	.	.	5	60
"	Rec'd Stou 11.65 P.O. 80	12	45	.	.
25	" " 14.60 " 1.35	15	95	.	.
26	" P/O P/m Cheyue	12	50	.	.
"	Pd J. Spains	.	.	14	00
"	" Ashley Loan	.	.	.	25
"	" Refinery Mills	.	.	4	25
"	" Dist	.	.	.	40
"	Rec'd Stou 10.00 P.O. 75	10	75	.	.
27	Pd D. White 9.30 P/O 12.50 S. Ross (28 th)	.	.	54	93
"	Rec'd Stou 8.30 P.O. 1.95	10	25	.	.
"	" 4.12 " 25	4	37	.	.
28	Pd N. Kinsman on aut	.	.	4	00
"	" Moring de Hon	.	.	1	32
"	" D. White on aut	.	.	.	30
29	" Carrying Dickinson	.	.	2	50
"	" S. J. Row, bill	.	.	4	59
"	" J. A. Fletcher	.	.	15	00
"	Rec'd Stou 14.15 P.O. 1.75	15	90	.	.
30	" 7.35 " 1.38	8	73	.	.
	Pd Loan H. I. M. on aut	.	.	10	57
				28	83
		322	40	322	40

KERR, BROWN & CO.

1863.

MAY.

FIFTH MONTH.

Days.

Memoranda, Bills Due. &c.

4	Mon.	
5	Tues.	
6	Wed.	
7	Thur.	
8	Fri.	
9	Sat.	
10	Sun.	

Ac

2

1

3

4

"

"

5

"

6

8

9

"

10

11

"

12

13

15

"

16

17

18

19

"

HAMILTON, C. W.

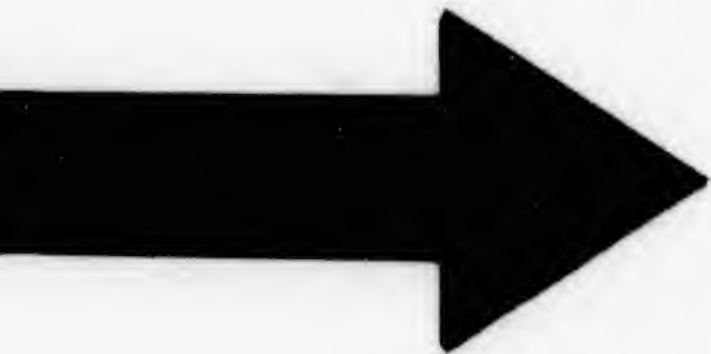
DAYS XXXI.

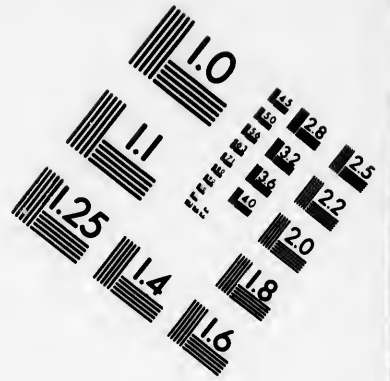
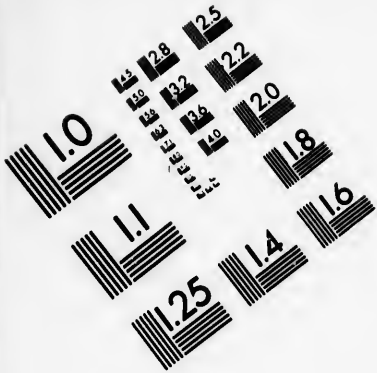
MAY.

1863.

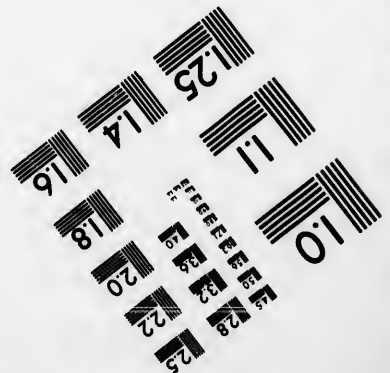
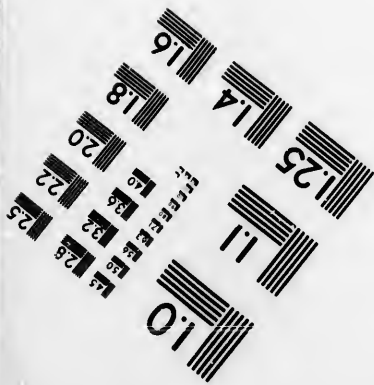
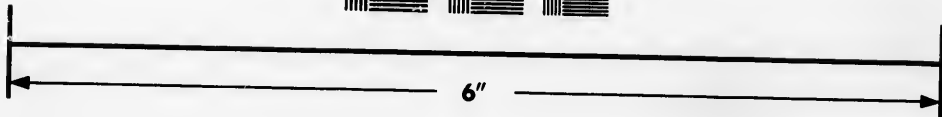
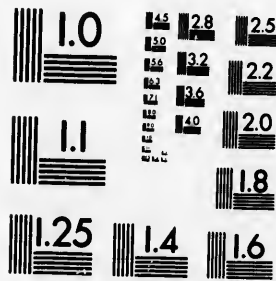
Date.	Account of Cash.	Received.	Paid.
Aug 1	Bal for	28 83	
	Pro for said in Shrapul.		5 50
	" Shrapul on aut		10 00
	Rec'd Store 9.10 P.O. 1.00	10 10	
2	Paid Caffie.		2 94
	Rec'd Store .88 P.O. .88	8 76	
3	" " 7.60 " 1.50	9 10	
4	Pd J. Watson's		13 47
	" " Croft & Kuller's		50
	Rec'd Store 4.35 P.O. 70	5 05	
5	Pd for chum		1 75
	Rec'd Store 8.75 P.O. 55	9 30	
6	" " 13.60 " 2.10	15 70	
8	" " 10.20 " 2.75	12 95	
9	Pd freight de		11 88
	Rec'd Store 9.90 P.O. 2.60	12 50	
	Pd Disch 8000 6.00		6 15
10	Rec'd Store 10.00 P.O. 75	10 75	
11	Paid flour 4.50		4 50
	Rec'd Store 16.25 P.O. 4.27	20 52	
12	Pd Sugar Kirkley 2.49		2 49
	Rec'd Store 12.47 P.O. 1.42	13 89	
13	" " 11.78 " 27	12 05	
15	Pd " Candis Paterson		4 65
	Rec'd Store 7.40 P.O. 1.05	8 45	
16	" " 8.85 " 1.65	10 50	
17	" " 2.20 " 2.10	4 30	
18	" " 6.12 " 1.95	8 07	
19	" " 5.65 " 1.77	7 42	
		298 24	68 83







**IMAGE EVALUATION
TEST TARGET (MT-3)**



**Photographic
Sciences
Corporation**

23 WEST MAIN STREET
WEBSTER, N.Y. 14580
(716) 872-4503

1.0



KERR, BROWN & CO.

1863.

MAY.

FIFTH MONTH.

Days.

Memoranda, Bills Due, &c.

11	Mon.	Rec ^d by Childs 1/4 MK wool 28 no/100 166.15	
12	Tues.	Nov. 29 th 4 P.M. P. M. Cheque — 100.00 Jen BK 38714 A 10.00 Com & King Dis 088 5.00	
13	Wed.	" 11169 5.00 " 11778 5.00 " 14505 5.00 " 11327 5.00 " 19522 5.00 " 11679 5.00	
14	Thur.	" 10010 5.00 " 16555 5.00 D 10139 5.00 p/o	160 6.10
15	Fri.		The same 166.10
16	Sat.		
17	Sun.		

Date	20
Date	22
Date	23
Date	24
Date	25
Date	26
Date	27
Date	29
Date	30
Date	31

FIFTH MONTH.

HAMILTON, C. W.

DAYS XXXI.

August MAY.

1863.

Date.	Account of Cash.	Received.		Paid.	
	deal brok up	208	24	68	83
20	Rec Store <u>13.00</u> P.O. <u>1.35</u>	14	35	.	.
				20	00
22	Pd J. Fletcher <u>20.00</u>				
"	Rec Store <u>10.50</u> P.O. <u>1.02</u>	11	62	.	.
23	Pd Pinks <u>60</u> Dist <u>75</u>	.	.	1	35
"	Rec Store <u>7.00</u> P.O. <u>50</u>	7	80	.	.
24	" " <u>8.45</u> " <u>95</u>	19	40	.	.
25	" " <u>7.45</u> " <u>90</u>	8	35	.	.
26	" " <u>8.05</u> " <u>50</u>	8	35	.	.
	Pd. Div <u>35</u>	.	.	.	35
27	" 4 Childs note	.	.	122	56
"	Rec Store <u>18.00</u> P.O. <u>1.95</u>	19	95	.	.
"	" 17. F. Charles on way	29	00	.	.
29	Pd for Turin's Suck	.	.	2	25
"	" Semory Oyster h	.	.	4	72
"	Rec Store <u>6.00</u> P.O. <u>1.00</u>	7	00	.	.
30	Pd Dr White in full	.	.	19	31
"	" Hewitts air	.	.	16	20
"	" Quarter	.	.	1	50
"	Rec Store <u>8.90</u> P.O. <u>65</u>	9	55	.	.
31	" " <u>7.15</u> " <u>1.62</u>	8	77	.	.
	Bal 333.38			81	31
	<u>252.07</u>				
	81.31				

166.15

0.00
0.00
5.00
5.00
5.00
5.00
5.00
5.00
5.00
5.00
5.00

160
6.10
166.16

333.38 333.38

KERR, BROWN & CO.

1863.

MAY.

FIFTH MONTH.

Days.

Memoranda, Bills Due, &c.

18		1. a. 7 Loan. 8.00 Sept 10 - 5.00
Mon.	19	Loan of a candle $\frac{20}{Sept.}$ $\frac{15}{30}$
Tues.	20	arcs $\frac{10}{}$ $\frac{10}{}$
Wed.	21	arcs $\frac{10}{}$ $\frac{10}{}$ agua $\frac{10}{}$ $\frac{10}{}$ arcs $\frac{10}{}$ $\frac{10}{}$
Thur.	22	arcs $\frac{10}{}$ $\frac{10}{}$ agua $\frac{10}{}$ $\frac{10}{}$ arcs $\frac{10}{}$ $\frac{10}{}$
Fri.	23	
Sat.	24	
Sun.	25	

DA
Date

1
2
3
5
6
7
8
9
10
11
12
13
14
15
16
17
19
20
21
22
23
24

FIFTH MONTH.

HAMILTON, C. W.

DAYS XXXI.

September

1863.

Date.	Account of Cash.	Received.	Paid.
	Belaine ford	81	31
1	Rec Store 4.75 5.00 4.00	5	15
2	" " 11.25 " 2.10	13	35
3	" " 8.62 " 55	9	17
5	Pd. J. Spier w/leaf } 40.00 20 from	.	6 00
6	Rec Store 21.45 P.O. 1.85	23	28
	" " 7.65 " 67	8	32
7	" " 10.75 " 50	11	25
8	Pd. Pauline P. 3.25 " 12.15 Hoffman	.	7 90
"	Rec Store 7.65 P.O. 35	8	50
9	Pd freight dia 40	.	3 56
"	Rec Store 10.85 P.O. 40	11	25
10	Pd J. G. Fisher w/leaf	.	7 12
"	Rec Store 9.85 P.O. 1.15	11	00
12	" " 9.10 " 1.85	10	95
13	" " 9.00 " 80	9	80
14	" " 10.32 " 80	11	12
15	" " 4.20 " 1.35	5	55
	Pd. District Taban	.	24 05
16	Rec Store 4.00 P.O. 1.20	5	20
17	" " 10.80 " 35	11	15
19	Pd Freight " Brocks	.	1 80
"	" " " " "	.	1 60
"	Rec Store 6.72 P.O. 1.17	9	90
20	Pd Dist 50	.	50
"	Rec Store 9.67 P.O. 4.40	14	00
21	" " 9.55 " 55	10	10
22	" " 10.40 " 1.80	12	20
23	Pd Dist 50 comp	.	50
"	Rec Store 4.52 P.O. 65	5	17
"	Pd Watson & Co	.	29 60

287 79 82 68

KERR, BROWN & CO.

1863.	MAY.	FIFTH MONTH.
Days.	Memoranda, Bills Due, &c..	
25		
Mon.	You Bk 41048 A 10 BK AKA 35879 5 " " 35153 5	
26	My Dis 8180 5 Ontario Bond 43459 5	
Tues.	Wm J. Stewart 29 H. J. Stewart \$ 59	
27		
Wed.		
28	Bk Mount Lovel 44395 4 " U. C. - Ham 55882 5 53162 5 Com Bk 20000 5	
Thur.	H. B. B. Aley 19 Lovel	
29		
Fri.		
30		
Sat.		
31		
Sun.		

DAYS	Date.
24	"
26	"
27	"
28	"
29	"
30	"
1	"
3	"
4	"
5	"
6	"
7	"

FIFTH MONTH.

HAMILTON, C. W.

DAYS XXXI. *Sept* ~~MAY~~ *October* 1863.

Date.	Account of Cash.	Received.	Paid.
	Brot forid	287 79	82 68
24	pd freight ⁵⁶ ₁₀ ^{3.00} <i>Dist</i> <i>Carbis</i>	.	3 66
"	Rec Store 12.00 p.o. 1.00	13 00	.
26	pd freight ⁶⁵	.	65
"	Rec Store 8.40 p.o. 75	9 15	.
27	pd <i>Impulse</i>	.	4 24
"	Rec Store 4.42 p.o. 1.52	5 94	.
28	pd G. Childs & Co	.	140 00
"	Rec Store 26.70 p.o. 1.07	21 77	.
29	" " 6.73 " 42	7 15	.
"	pd <i>Southwate</i> on acct	.	10 50
30	" Freight <i>Biscuit</i> ³⁹	.	39
"	Rec Store 7.40 store 1.00	8 40	.
	Bal 353.20		111 08
	242.12 <i>Down</i>		
	<u>111.08</u>		

October

1	Balance down	127 08	
"	Rec Store 16.00 p.o. 1.00	17 00	.
3	" " 12.00 " 1.10	13 10	.
"	pd. <i>Minian</i> family <i>he de</i>	.	6 50
4	" G. Childs & Co	.	59 00
"	" Freight <i>Min. Bisc</i> ^{1.17}	.	1 85
	Rec Store 9.95 p.o. 2.05	12 00	.
5	" " 6.85 " 1.82	8 67	.
6	pd freight 8.51 <i>Carbis</i> ^{1.00}	.	9 57
4	Rec Store 6.05 p.o. 2.68	8 73	.
7	pd <i>H. M. B. Chapman</i>	.	19 00
	Rec for <i>Buller</i>	.	110 22
	Rec Store 19.20 p.o. 1.45	18 70	.
		<u>189 28</u>	<u>106.08</u>

KERR, BROWN & CO.

1863.

JUNE.

SIXTH MONTH.

Days.

Memoranda, Bills Due, &c.

Ad
10

1	Mon.	S. H. & J. Moss			
		Sept. yrs due 1/4 apr	86.25		
		Mk mount - in Toronto			
2	Tues.	George Childs Ho.			
		Acct 30 Due Jan 2 nd	127.50		
3	Wed.	Mk mount in mount			
		Oct 10. 64			
		1p. Faves 3.00			
		J. Curran in bond. 6.00			
4	Thur.	H. J. M. 33.00			
		J. V. " 32.00			
		C. J. M. " 75.00		275.87	
		M. S. M. " 75.00		5.26	
		J. Mann 75.00		270.67	
		S. H. M. 60.00	170.82	12.10	
5			20.00	282.97	
			150.82	70.43	
			46.37	212.34	
			197.19	22.10	
			16.23	234.44	
				8.36	
6		Paper 66.00	215.42	228.08	
		99.11	16.60	11.40	
		1/2 50.00	204.82	239.46	
		49.11	43.60		
		amb 24.25	3.36		
			248.42		
			167.46	3.55	
			11.54	244.87	
			159.00	28.00	
			15.16	272.87	
			174.10	8.00	
			15.26		
			158.82	264.87	
			12.00		
			170.82	275.87	

DAY	Date
	8
	10
	"
	11
	"
	12
	"
	13
	"
	14
	15
	17
	18
	"
	19
	"
	"
	20
	"
	"
	21
	22
	"
	"
	24
	25
	26
	"
	27
	"
	"
	28
	29
	31
	"

SIXTH MONTH.

HAMILTON, C. W.
JUNE.

DAYS XXX.		1863.	
Date.	Account of Cash.	Received.	Paid.
8	Prof ford	189 28	106 08
	Rec ^d Store 30.65 P.O. 2.43	33 08	.
10	Pd disch W.H. Jugh		2 44
4	Rec ^d Store 10.57 P.O. 97	11 54	.
11	" 1.55 12.05 " 1.20	15 10	.
	P.d. Muggery	.	15 28
12	" Crookery	.	2 80
"	Rec ^d Cash 14.05 P.O. 75	14 80	.
13	Paid Plumet 3.00 Store 17.00	.	20 00
"	Rec ^d Store 7.60 P.O. 30	7 90	.
14	" " 10.37 " 1.65	12 02	.
15	" " 35.00 " 1.45	26 45	.
17	" " 12.85 " 5.35	18 23	.
18	Paid flour 10.00 less 60	.	10 60
"	Rec ^d Store 42.70 P.O. 40	43 60	.
19	Pd disch 1.60 Gropu 1.95	.	3 55
"	Rec ^d Smith note pd	16 00	.
"	" Store 10.65 P.O. 1.35	12 00	.
20	Pd. flour W. Hook	.	8 00
"	Rec ^d Store 5.00 P.O. 1.00	6 00	.
21	" " 4.90 " 60	5 50	.
22	Pd Freight Water	.	5 20
"	Rec ^d Store 11.25 P.O. 85	12 10	.
"	Pd. P.O. 01 fuel	.	40 43
24	Rec ^d Store 8.60 P.O. 13.50	22 10	.
25	" " 7.25 " 70	8 00	.
26	Pd. freight 2.26 " 6.00	.	2 36
"	Rec ^d Store 10.40 P.O. 1.00	11 40	.
27	Pd School Tax 1.80 air 40 1.50	.	3 70
"	Rec ^d Store 4.25 P.O. 1.00	12 05	.
"	" Sunday School	3 38	.
28	" Store 10.65 P.O. 85	11 50	.
29	" " 11.00 " 1.25	12 25	.
31	Pd note 1.00 P. Porter 95	.	1 95
"	Rec ^d Store 20.05 P.O. 1.25	21 30	.
	Balance (265.19)	525 55	

86.25

27.50

6.00

87
26
67
10
87
43
34
10
444
36
08
40
46

KERR, BROWN & CO.,

1863.

JUNE.

SIXTH MONTH.

Days.

Memoranda, Bills Due, &c.

8	Mon.	Matthewson & Co	18
9	Mon.	Mr. Toront & Mont	5
10	Tues.	Sep 14 4 hrs/d. due 14/17 Jan 7 372.98	
11	Wed.	G. Childs & Co	
12	Wed.	22 Sept. HK Mont & Mont 4 hrs/d. due 22/25 522.61 Jan 7	
13	Thurs.	De B. MacDonald & Co	
14	Frid.	Com Bk. Jyrenele Sep 26 4 hrs/d Jan 28/29 135.59	
15	Sat.	Datto 15 hrs A. Hope & Co removal at their office due 15/18 feb 230.00	
16	Sun.		

DA	1
Dat	"
	2
	"
	"
	3
	"
	"
	4
	"
	"
	5
	"
	7
	8
	9
	10
	11
	"
	12
	"
	14
	15
	"
	16
	17
	18
	19
	21
	22
	"
	23
	"
	24
	25

XXVI MONTH.

HAMILTON, C. W.

DAYS XXX.

Nov 1883

1863.

Date.	Account of Cash.	Received.	Pa'd.
1	Balanc in hand	265 19	.
"	Rec ^d Store 19.08 P.O. 66	19 68	.
2	PD Postage Hudson 90	.	90
"	" Stamp out	.	57
"	Rec ^d Store 15.78 P.O. 14.25	30 03	.
3	PD Freight 20 lbs 66	.	3 00
"	Rec ^d for Store 20.66 store 60	11 05	.
"	" Store 20.66 store 60	21 20	.
4	PD A Hope & Co to return note	.	323 38
"	" Disch 1.56	.	1 50
"	Rec ^d Store 14.30 P.O. 3.02	17 32	.
5	PD Vinegar Berryman	.	8 42
"	Rec ^d Store 10.90 P.O. 1.35	12 25	.
7	" " 24.92 " 1.22	26 14	.
8	" " 7.00 " 1.12	8 12	.
9	" " 6.50 " 1.06	7 60	.
10	" " 6.35 " 1.47	7 82	.
"	PD Taxes 6.25	.	90
"	Mountjoy 16.25 P.O. 1.20	17 45	8 25
12	PD Ad to Home 22.68	.	28 68
"	Rec ^d Store 14.42 P.O. 96	15 52	.
14	" " 17.25 " 2.52	19 77	.
15	PD A. Hope & Co	.	107 87
"	Rec ^d Store 18.63 P.O. 1.15	19 78	.
16	" " 11.55 " 2.00	13 55	.
17	" " 24.10 " 47	24 57	.
18	" " 18.40 " 2.00	20 90	.
19	" " 21.18 " 82	22 00	.
21	" " 3.75 " 1.20	4 95	.
22	PD E. A. Miller	.	1 25
"	Rec ^d Store 9.00 P.O. 20	9 20	.
23	PD Freight 2.42	.	2 42
"	Rec ^d Store 3.08 P.O. 1.80	4 88	.
24	" " 12.00 " 2.25	14 25	.
25			

61322-487 14

18
72.98

22.61

135.59

230.00

KERR, BROWN & CO.,

JUNE

SIXTH MONTH.

1863.

Days.

Memoranda; Bills Due, &c.

15	Mon.	Thomson Claxton St City Bank in Mont
16	Tues.	Oct 18 at City Bk Mont 5 mo due 18/21 Mar 315.88
17	Wed.	Thomson Claxton St Oct 18 at City Bk Mont
18	Thurs.	7 mo due 18/21 May 322.85
19	Frid.	John Watson St Montreal
20	Sat.	13 Oct due 18/16 Apr 81.57 - La Banque du Peuple -
21	Sun.	

DAY	Date
25	
"	
26	
28	
29	
30	
1	
2	
3	
"	
5	
6	
"	
7	
8	
9	
10	
12	
"	

SIXTH MONTH.

HAMILTON, C. W.

DAY'S XXX. *Nov* JUNE. 1863.

Date.	Account of Cash	Received.	Paid.
25	no income <u>7.20</u>	613 22	457 14
"	Rec ^d Store <u>10.05</u> P.O. <u>1.95</u>	12 00	7 20
26	" " <u>8.85</u> <u>57</u>	9 27	.
27	pd dit <u>1.00</u>	.	1 00
28	Rec ^d Store <u>10.05</u> P.O. <u>95</u>	11 00	.
29	" " <u>25.65</u> <u>1.40</u>	27 05	.
30	pd note of Childs & Co	100 00	166 15
	" withers	20 00	3 50
	Rec ^d Store <u>18.00</u> <u>2.00</u>	20 00	.
	pd Mrs Tongley	.	13 00
		692 69	677 99
		677 99	

15.88

22.85

ab

31.57

December		Received.	Paid.
1	pd for Pines <u>1.50</u> Books <u>70</u>	186 40	.
"	Rec ^d Store <u>11.45</u> P.O. <u>2.50</u>	14 70	21 20
2	Paul Patton	13 95	2 00
"	Rec ^d Store <u>5.30</u> P.O. <u>65</u>	5 95	1 75
3	pd for salt <u>1.75</u>	.	5 00
"	Rec ^d Store <u>10.26</u> P.O. <u>1.00</u>	11 20	.
5	pd Struffow <u>5.00</u>	15 63	5 00
"	Rec ^d Store <u>14.35</u> P.O. <u>1.28</u>	.	105 00
"	pd J. Speirs not due	.	10 00
6	" Woodward on a/c	.	.
"	Rec ^d Store <u>7.20</u> P.O. <u>85</u>	8 05	.
7	" " <u>3.55</u> <u>1.67</u>	5 22	.
8	" " <u>7.70</u> <u>97</u>	8 07	.
9	" " <u>15.50</u> <u>76</u>	16 20	.
10	pd freight <u>57</u>	.	57
11	Rec ^d Store <u>15.40</u> P.O. <u>3.50</u>	18 90	.
12	pd Mitchell <u>11.37</u> P.O. <u>1.30</u>	12 62	8 00
		130 49	140 46

KERR, BROWN & CO.

1863.

JUNE.

SIXTH MONTH.

	Date.	Memoranda, Bills Due, &c.	
22 Mon.		<i>G. Childs Ho</i>	
		<i>Bk Toronto 02236 Montreal</i>	10.00
		<i>" " C 01425 -</i>	5.00
		<i>you - 26947 B</i>	10.00
		<i>" 142835 A</i>	10.00
23 Tues.		<i>" 82319 A</i>	4.00
		<i>" 75334 A</i>	4.00
		<i>Bk Montreal C 1404</i>	5.00
		<i>Neig Dist 9940 B</i>	5.00
		<i>" 17385 B.</i>	5.00
		<i>" 18962 B.</i>	5.00
		<i>" 15862 B.</i>	5.00
24 Wed.		<i>Com Bk D 19394</i>	5.00
		<i>" D 16328</i>	5.00
		<i>" A 10757</i>	5.00
		<i>" D 10073</i>	5.00
		<i>" D 16599</i>	5.00
		<i>" D 10967</i>	5.00
		<i>" H 10603</i>	5.00
25 Thur.		<i>" D 10458</i>	5.00
		<i>Ontario 38726</i>	5.00
		<i>Bk cap C 55851</i>	5.00
		<i>" 46560</i>	5.00
		<i>" 30434</i>	4.00
26 Fri.		<i>Stambr</i>	50
		<i>\$ 129 50</i>	
27 Sat.			
28 Sun.			

DAY	Date.
	13
	"
	14
	"
	15
	16
	"
	17
	"
	19
	20
	21
	22
	22
	"
	"
	23
	24
	"
	26
	27
	28
	29
	30
	"
	31
	"
	"

KERR, BROWN & CO.

1863.

JUNE.

SIXTH MONTH.

Days.

Memoranda, Bills Due, &c.

Days.	Mon.	Tues.	WED.
29	<i>Charles Watts Stratford</i>		
	Com M ^k D 00077	Lard	10.00
	" " A 23875	Ham	10.00
	Dk u.c 46027	Colonial	5.00
	Out M ^k 51823	Ham	1.00
	" " 44251	Dresses	1.00
	P. S. L ^{pr} —		71 27.71
30			
1	JULY.		
	<i>sid 12.00</i>		
	<i>11. S. Coakbar</i>		
	<i>B. Muttons & Co on note due 14/17.</i>		
	M ^k u.c. 44931	Stratford	5.00
	Com M ^k D 11718	Kington	5.00
2	Sun "	22279 A	10.00
	"	67668 A	4.00
		55897 B	4.00
		67678 A	4.00
		74694 A	4.00
		79596 A	4.00
3		60543 B	4.00
		62012 A	4.00
		72879 A	4.00
		64729 B	4.00
		73175 A	4.00
		88716 B	4.00
		72835 A	4.00
4		75517 B	4.00
		87498 B	4.00
		67455 B	4.00
	<i>note</i>	22439 B	4.00
		26559 B	4.00
		76373 A	4.00
5		60094 B	4.00
		67041 A	4.00
			100.00

DAY	Date.
2	
3	
4	
5	
6	
7	
8	
9	
10	
11	
12	
13	
14	
15	
16	
17	
18	
19	
20	
21	
22	
23	
24	
25	
26	
27	
28	
29	
30	

SIXTH MONTH.

HAMILTON, C. W.

DAYS XXX.

JUNE.

1865

1863.

Date.	Account of Cash.	Received.	Paid.
	Balance fwd.	41 30	hand.
		34 30	paid.
2	Pd Bates & Co		75
3	Pd Store 26.35 P.O. 77	27 12	
3	" " 8.15 " 1.00	9 15	
4	Pd C. Watts		27 71
"	Pd Store 4.70 " 2.20	6 90	
5	" " 7.35 " 1.35	8 70	
6	Pd Mountjoy & Co		6 55
"	" Patterson		10 00
"	Pd Store 4.90 P.O. 2.20	7 10	
7	" " 11.90 4.50	16 40	
8	Pd J. Speer		140 00
"	Pd Store 9.75 1.85	11 60	
10	" " 4.00 1.50	5 50	
11	" " 14.90 2.15	17 05	
12	" " 7.20 2.55	9 75	
"	Swan S. Cook	100 00	
13	Pd Matthews & Co		100 00
"	Pd Store 3.70 1.82	5 52	
"	Pd Writing Paper		80 50
14	Pd Store 7.55 P.O. 2.65	10 20	
16	" " 6.45 " 2.05	8 50	
17	" " 5.80 " 1.60	7 40	
18	" " 3.40 " 2.15	7 55	
19	Pd for Knits needles & pins		1 63
"	Pd Store 8.98 P.O. 1.10	10 03	
20	Pd Mountjoy & Co		3 18
"	Pd Store 4.12 P.O. 2.00	6 17	
"	Pd for pen		82
21	Pd Store 11.85 " 1.20	13 05	
23	" " 30.45 " 1.00	31 15	
"	Pd Direct		1 00
24	" P.O. Exp		92 64
"	Pd W. S. Gutter	12 50	
"	" Patterson 8.21		3 38
"	" " 8.21		9 00
"	Pd 7.00 P.O. 1.00	8 00	
"	Pd G. Childs & Co		50
	(36.64)	371 64	347 16

27.71

100.00

KERR, BROWN & CO.

1863.

JULY.

SEVENTH MONTH.

Days.

Memoranda, Bills Due. &c.

6	Mon.	
7	Tues	
8	Wed.	
9	Thur.	
10	Fri.	
11	Sat.	
12	Sun.	
13	Mon.	
14	Tues	
15	Wed.	
16	Thur.	
17	Fri.	
18	Sat.	
19	Sun.	

10 *W. M. M. loan 20.00*

11 " " " *10.00*

12 " " " *10.00*

DAY
Date.

25
"
26
27
28
30
"
"
1
2
3
4
6
7
8
9
10
11
12
13
14
"

TH MONTH.

HAMILTON, C. W.

DAYS XXXI.

JULY.

1863.

Date.	Account of Cash.	Received.	Paid.
	Ind (36.64)	371 64	347 16
25	Pd for Chamberlain's salve	.	50
"	Rec Store 8.90 p.o. 1.05	9 95	"
26	" " 5.52 " 9.56	15 68	"
27	" " 9.75 " 52	10 27	"
28	" " 17.10 " 1.00	18 10	"
30	" " Paid D. B. McDonald on note		100 00
"	" " Dis + 1.00 freight		1 31
		425 04	448 97
		23 93	
		448 97	
	February 1865		23 93
1	Rec Store 8.70 p.o. 1.65	10 35	.
2	" " 4.57 " 90	5 47	.
	Pd Stratford on a/c	.	14 00
3	Rec Store 6.25 p.o. 1.80	8 05	.
4	" " 26.00 " 1.95	27 95	.
6	Pd D. B. McDonald on note	.	35 64
"	" " Paid Bal on a/c	.	9 00
"	" " Paid Par 49 Prind 80	.	1 29
	Rec Store 14.25 p.o. 2.57	16 82	.
7	Pd Brown Dam	.	2 50
"	" " Lewis, Stratford	.	3 39
	Rec Store 4.59 p.o. 85	5 44	.
8	Pd Suspension Bridge	24 46	1 00
"	Rec Store 21.21 p.o. 3.25	6 69	.
9	" " 4.72 " 1.97	7 75	25
10	" " 7.15 " 60	.	75
11	Pd D. Cook to pay note	9 22	.
"	" " Dis 75	.	.
"	Rec St. 7.22 p.o. 2.00	.	.
13	" " 3.60 " 2.40	.	.
14	" " 6.32 " 1.20	.	.
"	Pd. at Stratford	.	30 00
	(19.84)	135 72	136 50

KERR, BROWN & CO.

1863.

JULY.

SEVENTH MONTH.

Days.

Memoranda, Bills Due, &c..

13	Mon.	<p><i>William Durling & Co</i> <i>note dated 11 Nov 6/4m due 11/14 Aug 1863 08</i> <i>at Mr Br N. Am. in London</i></p>
14	Tues.	
15	Wed.	
16	Thur.	
17	Fri.	<i>Lower ...</i>
18	Sat.	<p><i>" 5000 10.00</i> <i>" 4.500 10.00</i></p>
19	Sun.	

DAY	Date
15	
16	
17	
18	
"	
20	
"	
21	
22	
24	
25	
27	
29	
28	
1	
2	
3	
4	
"	
6	
7	
8	

TH MONTH.

HAMILTON, C. W.

DAYS XXXI.

JULY.

1863.

Date.	Account of Cash.	Received.	Paid.
		(69.84)	
	Wool brot food	135 72	136 50
15	Mel. Bacin Sewing Mach		10 00
"	Rec ^d Store 142.10 P.O. 1.65	143 75	" "
16	" " 3.95 " 2.30	6 25	" "
17	" " 12.85 " 1.65	14 50	" "
18	" " 23.60 " 1.85	25 45	" "
"	" S. School Bal -	" "	23 90
20	" Store 50.35 P.O. 1.80	52 15	" "
"	Pay A. Hope on note	" "	100 00
21	Rec ^d Store 5.10 P.O. 1.25	6 35	" "
22	" " 3.10 " 1.00	4 10	" "
24	" " 16.00 " .85	16 85	" "
25	" " 10.25 " 1.20	11 45	" "
27	Pay Min Sewing Mach	" "	16 68
27	Rec ^d Store 4.26 P.O. 1.50	5 76	" "
28	" " 16.92 " 1.68	18 60	" "
	Balance down (86.57) P.O.	" "	53 85
		340 93	340 93

March 1865

	Balance down	53 85	" "
1	Rec ^d Store 15.31 P.O. 1.50	16 81	" "
2	" " 6.50 " 2.50	9 00	" "
3	" " 8.09 " 1.25	19 34	" "
4	Pd Maybury flour	" "	12 00
"	Rec ^d Store 16.23 P.O. .35	16 88	" "
6	" " 14.02 " 4.10	18 12	" "
7	" " 14.75 " 1.75	16 50	" "
7	Pd P.O. - 98.02	" "	98 02
8	" Paterson	" "	7 00
"	" D. White omitted feb.	" "	20 00
		140 50	137 02

173.08

KERR, BROWN & CO.

1863.

JULY.

SEVENTH MONTH.

Days.

Memoranda, Bills Due, &c.

27		
Mon.		
28		
Tues.		
29		
Wed.		
30		
Thurs.		
31		
Frid.		AUGUST.
1		
Sat.		
2		
Sun.		

DAYS

Date.

9
10
11
12
13
14
15

ENTH MONTH.

HAMILTON, C. W.

JULY.

1863.

DAYS XXXI.

Date.

Account of Cash.

Received.

Paid.

9	Rec ^d Store <u>4.00</u>	140 50	157 02
"	Pd Maple flour w/ale . . .	4 00	6 00
10	Rec ^d Store	24 00	
"	Pd D White	.	24 63
"	" G. Shrapnell	.	16 00
11	Rec ^d Store	19 63	
"	Pd T. Balmor		18 38
"	" Gen Sugarol		15
15	" J. Irwin <u>8.70</u>		

EIGHTH MONTH.

HAMILTON, C. W.

DAYS XXXI.

AUGUST.

1863.

Date.

Account of Cash

Received.

Paid.

<i>acno</i>	<i>Isra p... ... balance ...</i>	<i>to another</i>	
-------------	--------------------------------------	-------------------	--

to ...
to ...
sum

KERR, BROWN & CO.

1863.

AUGUST.

EIGHTH MONTH.

Date,

Memoranda, Bills Due, &c.

10

Mon.

11

Tues.

12

Wed.

13

Thur.

14

Fri.

15

Sat.

16

Sun.

DAY

Date

KERR, BROWN & CO.

1863.

AUGUST

EIGHTH MONTH.

Days.

Memoranda, Bills Due, &c.

DAY

Date

17

Mon.

18

Tues.

19

Wed.

20

Thurs.

21

Frid.

22

Sat.

23

Sun.

KERR, BROWN & CO.

1863.

AUGUST.

EIGHTH MONTH.

Days.

Memoranda, Bills Due, &c.

24	Mon.	
25	Tues.	
26	Wed.	
27	Thur.	
28	Fri.	
29	Sat.	
30	Sun.	

KERR, BROWN & CO.

1863.

AUGUST.

EIGHTH MONTH.

Days.

Memoranda, Bills Due, &c.

31

Mon.

SEPTEMBER

1

Tues.

2

Wed.

3

Thur.

4

Fri.

5

Sat.

6

Sun.

KERR, BROWN & CO.,

1863.

SEPTEMBER.

NINTH MONTH.

Days.

Memoranda. Bills Due, &c.

7	Mon.	
8	Tues.	
9	Wed.	
10	Thur.	
11	Fri.	
12	Sat.	
13	Sun.	

DAY

Date

KERR, BROWN & CO.

1863.

SEPTEMBER.

SIXTH MONTH.

Days.

Memoranda, Bills Due, &c.

14
Mon.
15
Tues.
16
Wed.
17
Thur.
18
Fri.
19
Sat.
20
Sun.

DAY
Date.

KERR, BROWN & CO.

1863.	SEPTEMBER	NINTH MONTH.
Days.	Memoranda, Bills Due, &c.	
21 Mon.		
22 Tues.		
23 Wed.		
24 Thurs.		
25 Frid.		
26 Sat.		
27 Sun.		

DAY
Date

KERR, BROWN & CO.

SEPTEMBER

SIXTH MONTH.

1863.

Day.

Memoranda, Bills Due, &c.

DAY
Date

12

Mon.

29

Tues.

30

Wed.

OCTOBER.

1

Thurs.

2

Frid.

3

Sat.

4

Sun.

HAMILTON, C. W.

SEPTEMBER

1863

DAYS XXX.

Date

Account of Cash

Received

Paid

NINTH MONTH.

KERR, BROWN & CO.

1863.

OCTOBER.

TENTH MONTH.

Days.

Memoranda, Bills Due, &c.

5	Mon.	
6	Tues.	
7	Wed.	
8	Thur.	
9	Fri.	
10	Sat.	
11	Sun.	

KERR, BROWN & CO.

1863.

OCTOBER.

TENTH MONTH.

Days.

Memoranda, Bills Due, &c.

12	Mon.	
13	Tues.	
14	Wed.	
15	Thur.	
16	Fri.	
17	Sat.	
18	Sun.	

KERR, BROWN & CO.,

1863.

OCTOBER.

TENTH MONTH.

Days,

Memoranda, Bills Due, &c..

19	
Mon.	
20	
Tues.	
21	
Wed.	
22	
Thur.	
23	
Fri.	
24	
Sat.	
25	
Sun.	

KERR, BROWN & CO.,

OCTOBER.

TENTH MONTH.

1863.

Days,

Memoranda, Bills Due, &c.,

26
Mon.
27
Tues.
28
Wed.
29
Thur.
30
Fri.
31
Sat.
1
Sun.

NOVEMBER.

KERR, BROWN & CO.

NOVEMBER

ELEVENTH MONTH.

Days.	Memoranda, Bil. Duc, &c.
2 Mon.	
3 Tues.	
4 Wed.	
5 Thur.	
6 Fri.	
7 Sat.	
8 Sun.	

KERR, BROWN & CO.

NOVEMBER.

ELEVENTH MONTH.

Days.

Memoranda, Bills Due, &c.

9	Mon.	
10	Tues.	
11	Wed.	
12	Thur.	
13	Fri.	
14	Sat.	
15	Sun.	

DAY
DATE

KERR, BROWN & CO.

1863.

NOVEMBER.

ELEVENTH MONTH.

Date.

Memoranda, Bills Due, &c.

16
Mon.
17
Tues.
18
Wed.
19
Thur.
20
Fri.
21
Sat.
22
Sun.

DA
Dat

KERR, BROWN & CO.

1863.	NOVEMBER	ELEVENTH MONTH.
Days.	Memoranda, Bills Due, &c.	
23 — Mon.		
24 — Tues.		
25 — Wed.		
26 — Thurs.		
27 — Frid.		
28 — Sat.		
29 — Sun.		

KERR, BROWN & CO.

1863.		NOVEMBER.	ELEVENTH MONTH.
Days.		Memoranda, Bills Due, &c.	
30	Mon.	DECEMBER.	
1	Tues.		
2	Wed.		
3	Thurs.		
4	Frid.		
5	Sat.		
6	Sun.		

KERR, BROWN & CO.

1863.

DECEMBER.

TWELFTH MONTH.

Days.

Memoranda, Bills Due, &c.

7	
Mon.	
8	
Tues.	
9	
Wed.	
10	
Thur.	
11	
Fri.	
12	
Sat.	
13	
Sun.	

KERR, BROWN & CO.,

1863.

DECEMBER.

TWELFTH MONTH.

Days.

Memoranda, Bills Due. &c.

14		
Mon.		
15		
Tues.		
16		
Wed.		
17		
Thur.		
18		
Fri.		
19		
Sat.		
20		
Sun.		

DA
Dai

KERR, BROWN & CO.

1863.

DECEMBER.

TWELFTH MONTH.

Days.

Memoranda, Bills Due, &c.

DAY

Date.

21

Mon.

22

Tues.

23

Wed.

24

Thur.

25

Fri.

26

Sat.

27

Sun.

ELFTH MONTH.

HAMILTON, C. W.
DECEMBER.

DAYS XXXI.

1863.

Date.

Account of Cash.

Received.

Paid.

KERR, BROWN & CO.

1863.

DECEMBER.

TWELFTH MONTH.

Days.

Memoranda, Bills Due, &c.

DAYS

Date.

28

—

Mon.

29

—

Tues

30

—

Wed.

31

—

Thur.

6.23
3.13
3.60
1.52

WELFTH MONTH

HAMILTON, C. W.

DAYS XXXI.

DECEMBER.

1863.

Date.	Account of Cash.	Received.	Paid.
-------	------------------	-----------	-------

1.52
 53
 3.60
 5.13
 6.23

Continued from 890

Expenses to the Farm

Produce

Freight

Fare & hire

Freight

July 16

22

29

Part of 1st Annual Exp

by Mr. H. W. 7.00

KERR, BROWN & CO.,
ANNUAL ACCOUNT for MDCCCLXIII.

MONTHS.	Received.	Paid.
.....JANUARY.....		
.....FEBRUARY.....		
.....MARCH.....		
.....APRIL.....		
.....MAY.....		
.....JUNE.....		
.....JULY.....		
.....AUGUST.....		
.....SEPTEMBER.....		
.....OCTOBER.....		
.....NOVEMBER.....		
.....DECEMBER.....		

Po
 Griffin
 worth
 R. M. J.
 P. Hol
 Brophy
 Benjamin
 W. Bar
 Freche
 Ins
 G. Shep

 Let
 paid. for
 On
 is 5 cent
 The
 N
 E
 and so o
 And
 Lett
 6d. sterli
 Lett
 England
 The rate
 "
 "
 The Pos
 Le
 Ne

 Two
 n Canadi
 mer and I
 nard Pack
 to Boston
 The l
 the letter
 or " By B
 " By Cana
 " Canadia

 Perso
 registered

POST OFFICE DEPARTMENT.

GENERAL POST OFFICE.

Postmaster General, Hon. M. H. Foley; Deputy Postmaster General, Wm. H. Griffin; Accountant, H. A. Wicksteed; Secretary, Wm. White; Cashier, John Ashworth; Superintendent Money Order Branch, P. Lesner. Clerks of the First Class—R. M. Jolyon, E. C. Hayden, J. T. Mc'Nig, R. Oliver, D. Lawson, H. S. Weatherley, P. Hol, J. C. Stewart. Clerks of the Second Class—J. Andette, C. R. McKenzie, J. Brophy, Geo. J. Abson. Clerks of the Third Class—J. Boyd, J. L. McMahon, E. H. Benjamin, Wm. D. LeSueur, B. King, G. H. Deargeive, J. J. Garrett, G. H. Holt, R. W. Barker, H. W. Griffin. Clerks of the Fourth Class—W. Berry, T. J. Holloway, O. Frechette, R. P. Davis, J. Wilson.

Inspection Branch—John Dewe, G. E. Griffin, M. Swannum, Edwd. F. King, W. G. Sheppard, Francis Clemow, and John Ogle R. 26 Apr.

LETTER RATES.

Letters posted in Canada addressed to any place within the Province pass, if prepaid, for 5 cents per $\frac{1}{2}$ oz., but if posted unpaid such letters are charged 7 cents per $\frac{1}{2}$ oz. On letters to Nova Scotia, New Brunswick, and Prince Edward's Island, the rate is 5 cents per $\frac{1}{2}$ oz., with optional prepayment.

The rate on Letters to the United Kingdom is, by Canadian Packet,

Not exceeding $\frac{1}{2}$ oz.	12 $\frac{1}{2}$ cents.
Exceeding " and not exceeding 1 oz.	25 "
" " 1 oz. and not exceeding 2 oz.	50 "

and so on, increasing two rates of postage for each additional ounce.

And by Canada Packet, 17 cents per $\frac{1}{2}$ oz., etc.

Letters for the United Kingdom must be prepaid, or they will be charged a fine of 6d. sterling on delivery.

Letters for British Colonies and possessions beyond Sea, and Foreign Countries, via England, must be prepaid.

The rate on letters for the U. States, (except California and Oregon) ..	10 cents per $\frac{1}{2}$ oz.
" " for California and Oregon ..	15 "
" " to Cuba ..	20 "

The Postage rate to British Columbia is,

Letters ..	25 cents per $\frac{1}{2}$ oz.
Newspapers ..	2 cents each.

MAILS FOR CANADA FROM ENGLAND.

Two Ocean Steamers carrying mails for Canada leave Liverpool in each week, viz: a Canadian Packet on every Thursday, via Derry on Friday, sailing to Quebec in summer and Portland in winter, by which the Postage rate is 6d. stig. per $\frac{1}{2}$ oz.; and a Canada Packet every Saturday, via Cork on Sunday, bringing Mails for Canada, alternately to Boston and New York, by which the Postage rate to Canada is 8d. stig. per $\frac{1}{2}$ oz.

The British Post Office forwards letters to Canada by the first packet sailing after the letter is posted, unless the letters bear a special direction—"By Canadian Packet" or "By British Packet"—and in that case they are kept over for the Packet designated. "By Canadian Mail" is not a distinctive superscription; for any Mail for Canada is a "Canadian Mail," by whatever Packet forwarded.

REGISTRATION OF LETTERS.

Persons posting Letters containing value, should be careful to require them to be registered, and to obtain from the Post Master a Certificate of receipt for registration.

The charge for Registration, in addition to the Postage, is as follows, viz. :

On Letters to any other place in Canada, or British North America...	2 cents.
On Letters for the United States.....	5 "
On Letters for the United Kingdom.....	12½ "
On Letters for British Colonies or possessions sent via England....	25 "

On Letters for France and other Foreign Countries, via England, an amount equal to the postage rate.

Both the postage charge and registration fee must in all cases be prepaid.

Registration is not an absolute guarantee against the miscarriage or loss of a letter; but a Registered Letter can be traced when an Unregistered Letter cannot, and the posting and delivery or non-delivery can be proven. A Registered Letter is thus secured against many of the casualties which, from incorrect address, forgetfulness of the receiver, or other error, may affect an Unregistered letter.

MISCELLANEOUS CHARGES.

The charge on Parcels by the Parcel Post, which is limited to places within the Province, is 25 cents per lb. (with 5 cents additional if Registered.)

One cent per oz., payable in advance by Postage stamp, is the rate on Printed Circulars (Printed Circulars, if sent in envelopes, whether sealed or unsealed, are liable to letter postage.) Prices current, Hand Bills, and other Printed matter of a like character and on Books, bound or unbound, when posted at a Canadian Post Office addressed to any place in Canada, British North America generally, or the United States.

The charge on Books, etc., by Book Post to England, is 7 cents on packets not exceeding 4 oz. in weight, 12½ cents on half lb. packets, and 12½ cents additional for every additional ½ lb. These charges must be prepaid. Photographs, provided they are not upon glass, or in cases containing glass, may be forwarded to England at the Book rate of postage;

BOOK POST WITH FRANCE.

For a Packet of Printed matter, or single New-paper, Book, etc., not over 2 oz., 4 cts.	
Do. do. do. exceeding 2 oz. and not over 4 oz.	8 "
Do. do. do. " 4 " " 8 " 17 "	
Do. do. do. " 8 " " 1 lb.	34 "

And so on, increasing 17 cents for each additional ½ lb.

The Book Post regulations between Canada and England apply to matter between Canada and France.

NEWSPAPERS AND PERIODICALS.

Newspapers published in Canada may be sent by Post from the office of publication, addressed to any place in Canada, at the following rates, if paid quarterly in advance, by either the publisher at the post office where the papers are posted, or by the subscriber at the delivering post office :

For a paper published 6 times a week, 40 cents per quarter.	
" " 3 " " 20 " "	
" " 2 " " 13 " "	
" " 1 " " 6½ " "	

When the above rates are not paid in advance by either publisher or subscriber, such Papers are charged one cent each on delivery.

TRANSIENT NEWSPAPERS.

Transient Newspapers—That is to say, Canadian Newspapers posted otherwise than from the office of publication, and American or British Papers posted or re-posted in Canada, must be prepaid 1 cent each, by postage stamp, or they cannot be forwarded—except only British Newspapers distributed to regular subscribers by Canadian Booksellers or News Agents—such papers pass free as they would do if received in the Canadian Packet Mails.

NEWSPAPERS BY MAIL FROM ENGLAND OR UNITED STATES.

Newspapers received from England, by the Canadian Packet Mails, are delivered free.

Newspapers from England by the Cunard Packet Mails are charged 2 cents each on delivery. (This is the American transit charge.)
United States Newspapers, brought by mail into Canada, are charged one cent each on delivery.

PERIODICAL PUBLICATIONS.

The rate on Periodical Publications is, if not exceeding 3 ounces in weight, 1 cent; over 3 ounces, 4 cents.

If prepaid by postage stamps from the office of publication, Periodicals published in Canada, weighing over 3 oz., may pass for 2 cents each.

Periodicals, printed in this Province, other than Newspapers, when specially devoted to the Education of Youth [both religious and general,] to Agriculture, to Temperance, or to any branch of science, and addressed directly from the office of publication, to be transmitted to any post office in this Province, are exempt from charge.

Transient Periodicals—including Canadian Periodicals not prepaid the commuted rate from the office of publication—or exempted by the preceding clause, and all other Periodical publications posted in the Province, must be prepaid by stamp, the full rate, at the time of posting.

Periodicals received in Mails, from the United States, are charged with the rates named in the 1st clause of this section.

MONEY ORDERS.

Money Orders payable in the Province may be obtained at any Money Order Office at the following rates of commission:

Under and up to \$10	5 cents.
Over \$10 and not exceeding \$20	10 "
Do. 20 do. do. 30	15 "
Do. 30 do. do. 40	20 "
Do. 40 do. do. 60	30 "
Do. 60 do. do. 80	45 "
Do. 80 do. do. 100	60 "
	75 "

N.B.—No half cents to be introduced in the Orders.

No single Order can be issued for more than \$200.

Money Orders, payable at any Money Order Office in Great Britain and Ireland, can be obtained at any Canadian Money Order Office. The Orders are drawn in Sterling, the commission chargeable being: for £2 and under, 25 cents; over £2 and up to £5, 50c.; over £5 and up to £7, 75c.; over £7 and up to £10, \$1. No order can be drawn for more than £10, but any number of orders of £10 each may be procured.

POSTAGE STAMPS.

Postage Stamps are provided for sale of the respective value of 1 cent for Newspapers; 5 cents for ordinary Provincial Letters; 10 cents for United States rate; 12½ cts. for Canadian Packet; and 17 cents for Cunard Packet.

Letter Envelopes are provided, impressed with medallion stamps, and equivalent to the prepayment of postage to the amount of 5 cents and 10 cents respectively.

The 5 cent envelopes will be sold to the public at the rate of \$5 50 per hundred, or 66 cents per dozen. The price of a single envelope is 6 cents.

The 10 cent envelopes will be sold at the rate of \$10 50 per hundred, or \$1 26 per dozen. Single envelopes 11 cts.

PENAL CLAUSES.

The Act contains the following penal clauses:—

To inclose a letter or letters, or any writing intended to serve the purpose of a letter in a Parcel posted for the Parcel Post, shall be a misdemeanor.

To inclose a letter or any writing, or to make any written marks to serve the purpose of a letter, or to inclose any other thing in a newspaper posted to pass as a newspaper, at the rate of postage applicable to newspapers, [except in the case of accounts and receipts of newspaper publishers, which are permitted to pass folded within the newspapers sent by them to their subscribers,] shall be a misdemeanor.

Canton	29,620	618	1,072	7,134	19,415	975	219	14	19	3	2	3	19	6	1	138	10	23
Dundas	18,777	2,40	481	2,101	14,694	391	543	15	10	3	1	166	1	6	1	28	3	29
Durham	39,115	6,891	1,371	6,972	21,850	13	821	17	19	9	7	1	42	14	4	12	6	140
Essex	32,030	2,592	2,558	1,468	21,336	38	1,596	639	222	9	22	3	251	8	1	56	7	22
Frontenac	25,211	1,377	596	1,748	13,331	3,706	3,745	39	32	14	14	12	214	46	7	51	6	18
Georgian	21,347	1,487	678	5,058	18,385	593	1,033	14	7	2	9	1	28	18	2	3	2	6
Glenora	21,187	91	2,274	377	16,802	1,371	166	57	19	1	1	6	2	2	1	12	3	5
Grenville	24,191	813	697	4,462	17,202	230	897	7	5	30	2	1	8	1	1	3	2	7
Grey	37,760	2,732	5,614	6,263	21,330	68	520	130	85	30	3	2	81	26	2	45	3	7
Haldimand	23,708	1,977	980	2,502	16,294	31	480	23	56	5	5	583	167	1	1	77	6	25
Hull	22,794	2,142	1,822	3,102	14,694	55	701	62	50	2	14	3	103	5	2	9	6	18
Hastings	44,970	2,419	971	7,170	31,925	580	1,346	31	16	8	6	7	287	18	1	55	14	139
Huron	31,931	5,369	6,201	8,313	23,880	479	737	453	176	27	17	1,632	97	1	4	86	16	21
Kent	31,183	2,361	1,905	1,700	18,616	1,693	4,566	178	109	4	16	3	173	39	2	24	10	75
Lambton	24,916	2,192	2,487	2,216	13,537	1,211	1,216	135	109	23	12	1	105	28	2	8	22	4
Lanark	31,639	628	3,425	4,809	21,831	339	314	24	5	2	5	3	5	4	1	18	6	36
Lennox & Addg'n	35,700	994	836	6,272	23,789	295	1,426	19	17	3	4	2	25	5	1	18	7	17
Leicester	28,002	893	373	3,738	21,965	119	821	3	18	3	3	1	32	8	1	19	1	2
London	27,825	1,769	867	3,201	19,062	6	1,986	43	28	4	23	1	451	14	5	50	7	75
Middlesex	48,756	5,175	5,515	4,721	30,702	77	1,811	221	115	21	16	4	168	12	2	56	11	41
Norfolk	25,590	1,932	902	1,401	21,614	297	1,539	103	298	7	12	2	152	27	1	16	8	15
Northumberland	40,392	3,531	2,105	5,091	28,075	179	1,139	28	38	1	14	8	16	23	1	1	42	8
Ontario	41,601	5,820	3,456	4,235	26,221	177	1,239	66	151	3	7	4	152	20	2	5	31	9
Oxford	46,226	5,222	5,638	2,965	25,677	40	2,729	261	518	12	41	6	1,093	47	5	41	9	36
Peel	27,240	3,190	1,229	5,456	16,726	16	470	32	49	12	11	4	18	4	1	16	1	26
Perth	38,083	3,486	3,677	6,291	20,514	296	674	107	53	9	6	8	2,637	197	1	2	88	4
Peterborough	34,631	1,847	1,378	5,133	15,343	300	474	12	18	2	1	2	38	18	8	1	17	2
Prescott	15,499	191	570	1,124	6,889	6,538	116	13	1	1	1	21	5	1	17	2	19	1
Prince Edward	20,869	691	167	1,618	17,261	91	836	19	62	1	1	1	405	4	4	41	8	15
Renfrew	20,325	495	1,336	4,113	12,493	1,139	189	20	39	1	1	3	2	2	2	1	1	1
Russell	6,824	88	308	725	2,780	2,889	32	1	1	1	1	1	1	1	1	1	1	1
Simcoe	44,720	3,172	3,483	9,312	26,325	916	930	49	38	1	29	14	151	20	3	5	39	17
Stornoway	18,129	914	1,105	1,181	14,165	970	314	36	2	2	2	2	8	1	3	1	4	101
Victoria	23,039	1,773	2,071	3,721	11,426	466	432	31	14	6	3	7	15	0	2	1	98	12
Waterloo	38,750	1,466	3,039	1,301	29,982	1,439	1,399	33	8	1	7	7	7,959	913	1	2	172	15
Welland	24,988	1,416	754	2,113	17,091	68	1,870	16	53	8	10	3	1,237	190	1	1	11	5
Wellington	43,200	4,793	6,911	7,322	27,811	152	846	103	70	15	4	747	58	2	2	38	17	27
Wentworth	31,532	3,005	2,513	3,922	20,292	99	1,276	39	62	7	14	2	556	19	3	1	67	7
York	56,674	9,037	3,170	7,687	36,779	291	1,886	161	149	23	13	5	269	54	4	2	83	10
Algoma District	2,091	361	238	128	3,673	328	154	7	1	1	1	10	7	1	1	8	1	28
Nipissing District	2,091	15	38	229	763	963	6	4	1	1	1	68	1	1	1	1	1	1
Total	1,396,091	114,293	98,792	191,231	869,592	33,287	507,538	4,383	32,111	487	532	203	22,906	2,389,104	96	2109	323	1,936

24520	3106	10941	3266	3356	410	10	8	1	6	17	3	4	1	37	10	56
18777	286	2878	3704	7116	147	18	8	1	6	17	3	4	1	37	10	56
39115	11171	16281	9051	12289	9921	24	266	55	2943	38	19	2	62	9	2	158
32070	5140	1659	6361	9461	5999	216	201	706	18	25	207	12	138	5	1578	708
18210	4010	10140	1382	5245	2493	51	122	8	1	592	75	10	31	317	271	49
27317	6759	7177	3975	8871	114	16	23	89	22	25	80	10	2	1	100	10
31197	331	10919	9209	61	452	133	4	1	1	10	1	1	1	1	20	43
24181	5813	5289	9023	7215	515	31	31	4	65	1	1	1	1	1	136	15
37753	8415	4256	13011	8214	893	891	193	206	119	162	42	21	1	103	433	635

23,708	5,931	2,468	3,631	6,674	1,823	731	22	631	95	16	6	78	18	61	1061	437
31,791	3,577	2,181	5,870	7,495	583	25	409	61	33	11	21	1	9	2	163	6
44,970	13,269	7,422	16,933	9,673	1,031	118	113	253	30	19	29	1	3	59	119	166
31,953	13,439	7,422	16,933	9,673	728	896	52	220	1,170	329	2	9	31	116	42	861
31,183	5,670	4,963	6,183	10,624	3,158	69	131	55	17	8	91	4	77	70	2	486
21,916	5,916	2,663	3,537	6,753	1,531	70	551	150	16	3	101	4	1	419	247	561
31,639	7,902	7,011	10,851	4,122	839	2	323	11	35	3	101	4	1	46	8	256
28,032	4,636	4,351	3,028	15,919	85	73	12	183	56	100	71	17	113	7	51	62
48,766	11,910	4,499	3,812	7,163	1,855	112	110	531	10	47	161	4	1	832	135	2,195
23,380	3,938	1,571	2,992	10,169	3,831	79	99	139	178	37	107	9	5	517	63	762
41,291	8,962	4,794	8,796	11,111	1,333	11	319	390	1,676	16	22	263	5	108	42	603
46,226	7,392	3,991	11,879	13,216	5,839	948	315	612	213	79	48	8	1	156	217	619
27,210	8,235	2,861	5,451	8,696	612	8	315	612	12	213	79	48	8	1	156	217
33,053	8,139	6,392	11,195	6,171	599	3,031	266	215	591	27	339	27	25	2	1	136
24,651	4,631	7,992	5,325	4,948	721	41	41	16	671	2	13	1	1	1	1	1
13,190	1,583	4,456	1,731	1,988	10,319	121	112	7	7	7	7	7	7	7	7	7
29,325	3,833	3,869	5,431	1,933	73	1	9	1,162	12	75	338	1	1	1	1	1
6,821	933	3,518	4,438	369	51	1	189	6	12	8	67	1	4	1	1	1
41,724	14,773	8,047	12,266	8,333	5,6	1	251	261	175	9	201	3	1	33	28	82
181,29	3,830	5,557	6,091	2,194	310	165	163	6	191	2	19	2	10	2	67	31
23,043	4,919	5,113	3,777	4,307	563	6	191	225	1,239	23	30	4	36	2	59	71
33,730	2,791	6,318	7,133	3,979	787	10,939	29	1,395	119	330	4	36	2	776	237	1,563
21,933	5,173	3,669	2,765	5,691	721	188	7	1,475	36	79	336	5	31	20	1,632	129
49,201	10,356	7,814	13,476	9,613	1,271	461	697	176	196	6	33	8	2	289	46	278
31,822	7,309	4,291	7,133	19,627	1,511	233	122	17	3	10	18	2	2	22	25	69
59,671	17,269	70,99	10,335	15,912	1,357	817	565	2,367	1,157	7	319	4	39	10	1	719
4,916	623	2,441	319	471	357	4	1	1	1	1	1	1	1	1	1	1
2,091	226	1,561	239	63	8	4	1	1	1	1	1	1	1	1	1	1
139,609	311,565	2,281	11,303	351,572	61,539	24,269	9,357	16,315	138,919	10,939	754,161	22,211	63,171	17,732	81,211	13,131

Total

Population of Townships—Canada West.

Abinger [see Denby]		Caledon.....	4,589	Elizabethtown.....	6,101
Adelaide.....	2,509	Caledonia.....	1,088	Ellice.....	2,616
Arljula.....	2,742	Cambridge.....	661	Elma.....	2,392
Adumston.....	1,713	Camden East.....	7,516	Elmusley.....	1,480
Adolphustown.....	801	Camden and Gore..	2,744	Elmsley, North.....	1,399
Albemarle.....	54	Canborough.....	1,252	Elzevir.....	1,309
Albion.....	5,078	Canoto [see Miller.]		Emily.....	3,923
Aldborough.....	2,325	Carden.....	626	Emmiskillen.....	1,069
Alfred.....	1,359	Carradoc.....	4,422	Emmismore.....	863
Algoma.....	424	Carrick.....	3,163	Erasmus.....	3,604
Alice.....	727	Cartwright.....	2,727	Erin.....	4,918
Ahwick.....	1,388	Cavan.....	4,901	Ernestown.....	5,450
Anabel.....	182	Cayuga, North.....	2,919	Escott.....	1,755
Ananruth.....	1,196	Cayuga, South.....	938	Esquesing.....	6,976
Amelnsburgh.....	3,487	Charlottenburg.....	6,695	Essa.....	6,904
Amherst Island.....	1,279	Charlotteville.....	3,475	Etobicoke.....	3,503
Ancester.....	5,043	Chatham.....	3,585	Euphemia.....	2,109
Anderdon.....	1,597	Chingouacousy.....	6,897	Euphrosia.....	1,472
Anglesea.....	184	Chrence.....	1,732	Feicon.....	2,122
Anson.....	109	Chrendon [see Barrie.]		Finch.....	2,399
Arran.....	2,861	Clarke.....	6,576	Fitzroy.....	3,239
Artemesia.....	2,875	Clinton.....	2,922	Flamloro? East.....	3,933
Arthur.....	3,597	Colborne.....	1,868	Flamloro? West.....	3,815
Ashfield.....	2,617	Colchester.....	2,656	Flos.....	953
Asphodel.....	2,911	Collingwood.....	1,492	Fredericksburg.....	3,376
Athol.....	1,823	Cornwall.....	5,000	Fullerton.....	2,890
Augusta.....	5,562	Cramahe.....	3,841	Gainsborough.....	2,959
Bagot.....	1,550	Crosby, North.....	2,121	Gateway.....	430
Barrie.....	1,463	Crosby, South.....	2,117	Garabaza.....	4,866
Barton.....	2,811	Crowland.....	1,457	Georgina.....	1,494
Bastard.....	3,656	Culross.....	2,266	Gluchford.....	2,199
Bathurst.....	3,272	Cumlerland.....	2,609	Gloucester.....	3,065
Bayham.....	5,141	Dalhousie.....	1,689	Goderich.....	3,582
Beckwith.....	2,541	Dalton.....	61	Gosfield.....	2,355
Bedford.....	1,691	Darling.....	909	Goulbourne.....	2,914
Belmont.....	689	Darlington.....	6,912	Gower North.....	2,576
Bentnick.....	3,331	Dawn.....	1,726	Gower, South.....	1,089
Bertie.....	2,673	Delaware.....	2,324	Grandham.....	3,956
Beverley.....	6,339	Denby.....	175	Grattan.....	1,253
Bexley.....	232	Derby.....	1,213	Greenock.....	1,847
Biddulph.....	3,401	Dereham.....	5,476	Grey.....	2,461
Binbrook.....	2,100	Digby.....	88	Griffith [see Selastopol.]	
Blandford.....	1,996	Dorchester, N.....	4,027	Grimshy.....	3,005
Blandhard.....	3,774	Dorchester, S.....	2,204	Guelph.....	3,088
Blenheim.....	6,968	Douro.....	2,519	Gwillimbury, East.....	3,862
Blothfield.....	178	Dover.....	2,656	Gwillimbury, North.....	1,842
Bosnquet.....	3,097	Dowie and Gore.....	3,610	Gwillimbury, West.....	3,603
Brant.....	3,125	Draper [see Macaulay.]		Haldimand.....	6,164
Bramford.....	6,904	Drummond.....	2,637	Hallowell.....	3,629
Brighton.....	3,713	Dumfries, North.....	4,161	Hamilton.....	6,315
Brock.....	4,625	Dumfries, South.....	3,916	Harwich.....	556
Bronley.....	1,275	Dunmer.....	2,105	Harvey.....	360
Brooke.....	1,600	Dunn.....	955	Hawkesbury, East.....	4,226
Brougham [see Bagot]		Dunwich.....	2,888	Hawkesbury, West.....	2,186
Bruce.....	2,250	Dysart [see Minden.]		Hay.....	3,054
Bridenell.....	1,023	Easthope, North.....	3,129	Hibbert.....	2,848
Buchanan [see Pettis- wawa.]		Faschoe, South.....	2,322	Hilber.....	3,153
Burford.....	5,599	Edwardsburg.....	5,549	Hinchinbrook.....	760
Burgess, North.....	1,312	Egremont.....	2,534	Holland.....	11
Burgess, South.....	342	Ekfrid.....	2,574	Hope.....	5,317
Burleigh [see Dunper.]		Elderslie.....	1,774	Horton.....	5,883
Caistor.....	2,005	Eldon.....	1,774		1,192
		Eldon.....	2,508		

Population of Townships—Canada West.—CONTINUED.

Houghton.....	1,959	Monaghan, South..	1,239	Rainham.....	2,116
Howard.....	3,976	Mono.....	3,626	Raleigh.....	3,759
Howe Island [see Phillipsburg.]		Montague.....	3,478	Rama.....	373
Howick.....	2,252	Moore.....	2,873	Ramsay.....	4,036
Hullitt.....	2,701	Morlington.....	3,049	Rawdon.....	3,591
Humberstone.....	3,039	Morris.....	2,333	Reath.....	6,214
Hungerford.....	4,351	Morrison.....	297	Richmond.....	3,459
Huntington.....	2,917	Mosa.....	3,033	Rochester.....	1,319
Huntley.....	2,651	Mountain.....	1,791	Romney.....	470
Huron.....	2,129	Muhmer.....	3,655	Rolph.....	236
Hunsell.....	4,573	Murray.....	1,814	Ross.....	1,311
Kalafar.....	1,983	Mus-koka [see Morrison.]	3,612	Roxborough.....	3,176
Kennebec.....	429	McGillivray.....	3,921	Russell.....	1,914
Kenyon.....	1,857	McKay [see Pettitawawa.]		Satdee.....	2,740
Keppel.....	592	McKillop.....	2,125	Sandwich, East... 3,133	
Kimcardine.....	2,906	McNab.....	2,000	Sandwich, West... 1,916	
King.....	8,063	Nassagaweya.....	2,800	Sarnia (see Keppel.)	
Kingston.....	4,587	Nelson.....	4,559	Saugeen.....	1,560
Kimos.....	1,812	Nepean.....	4,410	Saugeen.....	1,529
Kitley.....	3,418	Ninguta.....	2,109	Scarborough.....	4,851
Lake [see Marmora.]		Nieloh.....	2,395	Scott.....	2,169
Lamarck.....	2,881	Nissouri.....	2,395	Seagog.....	782
Lancaster.....	4,556	Nissouri, East... 3,181			
Lansdowne.....	3,105	Nissouri, West... 3,147			
Lavan.....	279	Normanby.....	3,963	Seneca.....	4,577
Laxton.....	407	Norwich, North... 3,431			
Leeds.....	3,709	Norwich, South... 2,049			
Lebo.....	3,556	Notawasaga.....	3,830	Sherbrooke [see Monlun.]	
Lochnel.....	5,069	Oakland.....	1,037	Sherbrooke, North. 277	
Logan.....	2,259	Olden.....	435	Sherbrooke, South. 781	
London.....	9,666	Oneida.....	3,051	Sidney.....	5,082
Longueuil.....	1,161	Opwaga.....	2,031	Smith.....	3,795
Loughborough.....	2,452	Orford.....	2,872	Snawden.....	191
Louth.....	2,024	Orlha.....	2,551	Somerset.....	3,116
Luther.....	689	Oro.....	1,391	Southernburg.....	611
Luttreth.....	485	Osgoode.....	3,036	Southwold.....	2,857
Macnab.....	23	Osnabrock.....	4,332	Stafford.....	559
Maddox.....	3,590	Oso.....	5,639	Stamford.....	3,011
Maidstone.....	1,652	Osprey.....	349	Stanhope, see Minden.	
Malden.....	5,320	Otonabee.....	2,201	Stanley.....	3,423
Malden.....	1,563	Oxford.....	4,261	Stephen.....	2,826
Manvers.....	1,235	Oxford, East... 4,167			
Mara.....	1,965	Oxford, North... 2,731			
Mareh.....	1,454	Oxford, West... 1,773			
Marposa.....	5,303	Oxford, West... 2,735			
Markham.....	8,653	Pakenham.....	2,112	Sullivan.....	1,736
Marlborough.....	2,331	Palmerston.....	127	Sunnidale.....	955
Marmora.....	1,439	Peel.....	2,616	Sydenham.....	3,021
Marshall.....	3,134	Pelham.....	5,093	Tay.....	1,991
Maryborough.....	3,853	Pembroke.....	691	Tecumseth.....	4,516
Marysburg.....	3,853	Petty.....	3,515	Thorah.....	1,025
Matchedash (see Orilla.)		Pettawawa.....	381	Thorold.....	2,837
Matilda.....	4,875	Pickering.....	8,012	Thurlow.....	4,864
McDonald.....	1,638	Pikington.....	2,397	Tilbury, East... 1,267	
McLaughlin.....	1,359	Pittsburgh.....	4,394	Tilbury, West... 1,199	
Mersen.....	2,143	Plantagenet, North. 2,539			
Metcalf.....	1,716	Plantagenet, South. 1,233			
Methuen [see Belmont.]		Plympton.....	3,287	Tisbury, West... 1,199	
Middleton.....	2,903	Portland.....	2,836	Tiv. see Tay.	
Miller.....	68	Proton.....	1,240	Torbolton.....	675
Minden.....	271	Pushneh.....	4,701	Toronto.....	6,592
Minto.....	2,841	Rudcliffe [see Brudenel.]		Toronto Gore..... 1,728	
Monaghan, North.. 1,281		Raglan (see Brudenel.)		Toronto, Ontario... 1,073	
				Townsend..... 5,742	
				Tratlar..... 5,816	
				Tuckersmith..... 3,226	
				Tudor..... 848	
				Turherry..... 1,261	

town..... 6,191
 2,616
 2,592
 1,430
 North..... 1,399
 1,307
 3,923
 1,069
 863
 3,604
 4,918
 5,450
 1,755
 6,976
 6,904
 3,503
 2,109
 1,472
 2,122
 2,399
 3,239
 East..... 3,933
 West..... 3,815
 953
 3,376
 2,890
 2,959
 430
 4,866
 1,494
 2,199
 3,065
 4,522
 2,355
 2,914
 2,676
 1,089
 3,956
 1,253
 1,847
 2,461
 [see St. Catharines.]
 3,005
 3,088
 East..... 3,862
 North..... 1,842
 West..... 3,603
 6,164
 3,629
 5,815
 556
 360
 East..... 4,226
 West..... 2,186
 3,054
 2,848
 3,153
 760
 11
 3,317
 5,883
 1,192

Population of Townships—Canada West.—CONTINUED.

Tasearora	2,141	Wellbete	5,833	Wolford	2,961
Tyendinaga	7,812	Westnuth	2,001	Woodhouse	3,703
Urbane	3,219	Westminster	6,285	Wolfeville	5,256
Uxbridge	3,933	Whitby, East	3,665	Wylie (see Rolph.)	
Vaughan	7,955	Whitby, West	3,518	Yarmouth	6,166
Vernam	1,545	Whitechurch	6,795	Yonge	3,834
Vespra	1,096	Wilferforce	1,285	York	10,337
Waukeet	2,316	Williams, East	2,475	Zoea	1,159
Watlace	2,101	Williams, West	2,221	Zorra, East	4,503
Walpole	1,812	Williamsburg	4,675	Zorra, West	3,691
Wantsingham	4,855	Willoughby	1,539		
Warwick	3,388	Winot	6,173	Algoma District	4,018
Waterloo, North	3,969	Winchester	4,031	Nipissing, do.	2,034
Waterloo, South	3,995	Wintham	4,035		
Wawanosh	3,151	Wolfe Island	3,621		

Population of Cities, Towns and Villages, Canada West.

Amherstburg	2,360	Guelph	5,076	Port Hope	4,162
Arnprior	670	Hamilton	863	Portsmouth	892
Ashunabham	993	LAMINGTON	19,006	Prescott	2,591
Barre	2,131	Hawkesbury	1,279	Preston	1,533
Belleville	6,277	Hespeler	634	Renfrew	700
Berlin	1,956	Holland Landing	741	Richmond	516
Bowmanville	2,724	Ingersoll	2,577	Sandwich	933
Bradford	961	Ipouais	618	St. Catharines	2,001
Brimpton	1,627	Kemptville	1,038	Simcoe	1,858
Bramford	6,251	Kincardine	951	Smith's Falls	1,137
Brighton	1,182	KINGSTON	13,713	Southampton	609
Brookville	4,112	Lindsay	1,907	Stirling	753
Clatham	4,466	LONDON	11,555	Stouffville	2,830
Chippawa	1,055	Miracleville	908	Stratroy	751
Cinton	1,292	Mt. Airy	905	Steelesville	750
Clinton	1,000	Atchell	1,216	St. Charles	6,291
Colbourn	4,975	Morrisburg	855	St. Mary's	2,778
Colborne	896	Napanee	1,773	St. Thomas	1,631
Collingwood	1,408	Newcastle	1,029	Sault Ste. Marie	898
Conroy	1,915	Niagara	2,070	Thorold	1,616
Dundas	2,852	Orkville	1,450	Trenton	1,393
Dunnville	1,263	Oshawa	2,090	TORONTO	44,821
Flora	1,043	OTTAWA	11,669	Vienna	993
Embro	551	Owen Sound	2,216	Waterloo	1,273
Fergus	1,117	Paris	2,373	Welland	731
Fort Erie	706	Pembroke	637	Whitby	2,697
Galt	3,069	Perth	2,465	Windsor	2,501
Georgetown	1,155	Peterborough	3,979	Woodstock	3,535
Georich	3,227	Pictou	2,037	Yorkville	1,570

COMPARATIVE TABLE OF POPULATION—CANADA EAST AND WEST.

Canada East, 1831	511,920	Canada West, 1851	952,091
Canada West, 1832	261,060	Canada East, 1851	890,361
Excess of Canada East	250,860	Excess of Canada West	61,733
Canada East, 1844	690,782	Canada West, 1861	1,396,091
Canada West, 1842	466,035	Canada East, 1861	1,110,427
Excess of Canada East	204,747	Excess of Canada West	285,427

Montre
Quebec
L'Assom
Bigot,
Beauce,
Bennin
Bellech
Berthei
Bonveni
Brome,
Chambl
Champla
Charlev
Chateau
Chicout
Compton
Dorches
Drumm
Gaspé,
Hochebu
Hunting
Iberville,
L'Islet,
Jacques
Joliette,
Kamensk
Laprairie,
Laval,
Hamilton,
Kingston,
London,
Ottawa,
Toronto,
Brant,
Bruce,
Carleton,
Dundas,
Durham,
Elgin,
Essex,
Frontena
Glengary,
Grey,
Grenville,
Haldmand
Halton,
Hastings,
Huron,
Kent,
Lambton,
Lanark,
Lennox and
Leeds,

Gross Population of Canada East, 1861.

City	Population	County	Population
Montreal	90,323	Levis	22,091
Quebec	51,109	Lothbier	20,018
Three Rivers	6,058	Muskingo	14,790
Sherbrooke, Town	5,899	Missisquoi	18,603
Argenteuil	12,897	Montcalm	14,724
Arthabaska	13,173	Montmagny	13,386
L'Assomption	17,355	Montmorency	11,136
Angot	18,841	Napierville	14,513
Beauce	20,416	Nicolet	21,663
Benharinois	15,742	Ottawa	27,757
Bellechasse	16,062	Pontiac	13,257
Berthier	19,608	Portneuf	21,291
Bonaventure	13,092	Quebec	27,893
Brome	12,732	Richelieu	19,070
Chamfily	13,132	Richmond	8,884
Champlain	20,003	Rimouski	20,854
Charlevoix	15,223	Rouville	18,227
Chateauguay	17,837	Saguenay	6,101
Chicoutimi	10,478	Shedford	17,779
Compton	10,210	Soulanges	12,121
Dorchester	16,195	St. Hyacinthe	18,877
Drummond	12,356	St. John	14,833
Gaspé	14,077	St. Maurice	11,100
Hochelagu	16,471	Steinbeck	12,258
Huntingdon	17,491	Tremblont	18,561
Iberville	16,891	Terrebonne	19,460
L'Islet	12,300	Two Mountains	18,408
Jacques Cartier	11,218	Vaudreuil	12,282
Joliette	21,193	Vercheres	15,485
Kamouraska	21,058	Wolfé	6,548
Laprairie	14,475	Yamaska	16,054
Laval	10,507		

Gross Population of Canada West, 1861.

City	Population	County	Population
Hamilton	19,096	Laurel	27,625
Kingston	13,713	Mid. Essex	48,786
London	11,555	Norfolk	28,590
Ottawa	14,669	Northumberland	40,592
Toronto	44,821	Ontario	41,601
Brant	30,338	Oxford	46,226
Bruce	27,499	Peel	27,210
Carleton	29,620	Perth	38,033
Dundas	18,777	Peterborough	24,631
Durham	39,115	Prescott	15,499
Elgin	32,050	Prince Edward	20,869
Essex	27,211	Renfrew	20,325
Frontenac	27,347	Russell	6,824
Glengary	21,187	Simcoe	44,720
Grey	37,750	Stormont	18,129
Grenville	24,191	Victoria	23,039
Haldimand	23,705	Waterloo	38,750
Halton	22,794	Welland	24,933
Hastings	44,970	Wellington	49,200
Huron	51,954	Wentworth	31,832
Kent	31,183	York	69,674
Laibton	24,916	Algoma District	4,916
Lanark	31,639	Nipissing	2,094
Lennox and Addington	28,002		
Leeds	35,759		

Total Population, 1,396,991.

NTED.
..... 2,961
..... 3,703
..... 5,256
Rolph.)
..... 6,106
..... 3,834
..... 10,337
..... 1,159
..... 4,503
..... 3,691
..... 4,013
..... 2,094

West.
..... 4,162
..... 892
..... 2,591
..... 1,533
..... 709
..... 516
..... 983
..... 2,011
..... 1,858
..... 1,137
..... 609
..... 753
..... 2,830
..... 751
..... 730
..... 6,231
..... 2,778
..... 1,631
..... 898
..... 1,616
..... 1,393
..... 44,821
..... 903
..... 1,273
..... 731
..... 2,697
..... 2,501
..... 3,535
..... 1,570

T AND WEST.
..... 952,091
..... 890,361
..... 61,743
..... 1,396,091
..... 1,110,427

..... 255,427

Believing we have been of some use in stimulating the manufacture of Potash, we re-
produce here a circular issued in 1859 on that subject.

CIRCULAR ON THE POTASH TRADE.

HAMILTON, C. W., July, 1859.

In calling the attention of our friends in new settlements to the great importance of the Pot Ash Trade a branch of industry that has of late years been much neglected, and which in these times when the wheat crops have become so very uncertain, might with little expense be much increased, and made to form a very advantageous auxiliary to the trade of the country—beneficial alike to Farmer and Merchant.

We would respectfully request your attention to the appended directions for the manufacture of Potash, which have been obtained from the inspectors of Ashes, as well as to suggest the use of the following precautions in shipping:—Each barrel should be properly and uniformly marked and numbered; our experience having taught us that, in cases where this has not been properly attended to, many awkward mistakes have occurred by barrels belonging to different owners getting mixed, and rendering it quite impossible for the agent at the place of sale to determine which belongs to one owner, and which to another.

The country storekeeper, in forwarding Potash to market, should stamp in a uniform manner his name and place of business in full, together with a running number on each barrel—thus:

JAMES DUNCAN.

CLAXTON—No. 5.

Then the initials of the Agent to whom he ships—thus:

W. L.

MONTREAL.

The number on the barrel would be an index to the maker of the Potash that he gets the actual returns of his own manufacture. It is also of importance to see that the forwarder's receipt has the names of the consigner and consignee, as well as the number of each barrel, written in full on the face of it. If these instructions are followed, the maker of No. 1 Potash need not fear getting his returns as No. 2 or No. 3.

General Instructions for the Manufacture of Potash.

The usual causes of inferiority in ashes are, in the first place, dirty leys, the leaching process not being sufficiently perfect, and the raw material, in many cases, being field ashes mixed with a large proportion of soil.

• The next cause is adulterating the ashes with lime, sand, &c. Salt should in no case be used, and lime only in the leaches. On no account should stones, wood, raw ashes, lime, straw, or dirt, be put in to fill up a barrel.

The next cause is using weak leys. The last run of the leaches, when not able to float an egg or a potatoe, should never be boiled, but kept to wet the next leaches.

Another cause is bad barrels. Whisky barrels, and green or unseasoned casks, the wood of which contains moisture of any kind, will cause the ashes to deteriorate rapidly. White Oak and White Ash casks are much preferable, and Red Oak should never be used where it can be avoided. All should be well seasoned.

Ashes should be emptied by coolers. The barrel, two coolers being just sufficient to fill one barrel, and there should be as little packing of Potashes as possible, as the more they are broken the more rapidly they will deteriorate by the action of the air. Ashes should never be packed hot into the barrels.

If the ashes have begun to melt before packing, the casks may be rubbed with dry slacked lime, to prevent farther melting; but time or raw ashes should never be thrown loosely over them, as this injures the appearance, and must be separated in inspection.

Barrels should weigh at least 60 lbs., when thoroughly seasoned, and they should be accurately weighed, and that weight legibly marked on the barrel before packing. They should be packed quite full, and should be covered with solid round hoops to the extent of two-thirds of the barrel. The dimensions of the barrels should be 20 to 22 inches diameter of head, and 30 to 32 length of staves, larger or smaller being condemned by law. The mark should be quite legible in paint or ink, and only one plain mark and number should be on each; as when there are two or three marks there is more

ufacture of Potash, we re-
subject.

TRADE.

rox. C. W., July, 1859.

the great importance of the
en much neglected, and
ry uncertain, might with
vantagous auxiliary to
chant.

directions for the mar-
rs of Ashes, as well as to
ch barrel should be pro-
ving taught us that, in
ward mistakes have oc-
d, and rendering it quite
h belongs to one owner,

ould stamp in a uniform
run ing number on each

s—thus :

of the Potash that he gets
mnce to see that the for-
as well as the number of
s are followed, the marker
3.

re of Potash.

ee, dirty Leys, the lead -
ad, in many cases, being

and, &c. Salt should in
ut should stoves, wood,

leaches, when not able to
vet the next leaches.

or unseasoned casks, the
ies to deteriorate rapidly.
ed Oak should never be

olers being just sufficient
ashes as possible, as the
y the action of the air.

may be rumbled with dry
should never be thrown
separated in inspection.

asoned, and they should
e barrel before packing.

solid round hoops to the
arrels should be 20 to 22

smaller being condemn-
and only one plain mark

ee marks there is more

liability of confusion. The mark should be the maker's or owner's name, and the name
of his place and residence, and a running number.

After packing, the barrels should be well coopered, with three shingle nails in the
end hoops to prevent the heads falling out, and put in a dry place where they will not
be exposed to moisture.

The grades by law established are first, second, and third sorts, and then unbranda-
ble Nos. 1, 2, 3, 4, and 5, each grade being an additional eighth of the selling price of
the First. Thus unbrandable No. 5, would have seven-eighths of the price of Firsts
deducted.

First Ashes should contain 77 per cent. of pure Alkali, at least.

Pearl Ashes cannot be manufactured except by persons who enter regularly into
the business, and who must consequently have all necessary knowledge.

We are, your most obedient servants,

KERR, BROWN & Co.

N.B.—We will be glad to ship and make returns for country merchants, free of
charge, thus giving them the advantage of economy in postage and freight.

KERR, BROWN & Co.

B U T T E R .

This is an article in which all our customers have to deal to a greater or less extent, and one in which, from want of due care in handling it, we are persuaded a considerable amount of money is annually lost.

Believing that a little more attention might convert this into an almost sure source of profit, we beg to invite the special attention of our friends to the following hints on this subject :—

On receiving butter from the farmer, a separation should be made,—1st, as to quality; 2d, as to colour.

The inferior quality should be invariably packed separate, and a distinguishing mark put on the kegs; as a few kegs of inferior will always damage the sale of a good lot if put into the market together.

The colour should likewise be packed separately, unless worked into each other until they become so thoroughly amalgamated, that when a butter tryer is put through the mass, no separate shade can be detected.

It is of the greatest importance that all the butter milk should be thoroughly worked out of the butter.

We recommend to our customers a machine, one of which can be seen at our warehouse. We have had it at work, and are satisfied it does the work of amalgamating the various colors, and extracting the butter milk most thoroughly. The cost is very trifling.

The only salt suitable for curing is the *ground Liverpool salt*, with a very little crushed sugar added. The Onondago salt, commonly used, is deficient in strength, and cannot preserve the butter many weeks. We would caution against using saltpetre. If the proper salt is used it is quite unnecessary.

The quantity of salt and sugar to be used must be left very much to the judgment of the packer, as there is already more or less salt in the butter when received from the farmer. When worked into a mass the taste will be a safe guide. The salt must be worked well *into* the butter, and not put in successive layers with the butter, as is too often done, and is very objectionable.

Until sufficient quantity to fill a keg has been accumulated, the butter should be put into pickle so as to be protected from the action of the atmosphere.

We strongly recommend the keg instead of the tub. The latter is quite unsuitable for shipping; and butter is frequently unsaleable, simply because packed in tubs. The best style of keg is white ash, with round hickory hoops, but when these cannot be easily obtained, the flat black ash hoop will do. They should be of uniform shape and size, not to exceed twenty inches in length by thirteen inches diameter, top and bottom, outside measurement. This size of keg will hold 80 lbs., and butter packed in such will almost invariably command a half cent per lb. more than larger sizes. The dry tare ought to be cut by the cooper on the bottom of the keg, and the packer's name and residence should be branded with black paint very neatly, or burned on the top of the keg.

Before packing, the keg should be scalded out, and salt sprinkled on the inside freely. The butter should then be packed firmly down, and covered on the top with a piece of white cotton cloth, from which the dressing has been washed out, and this again covered with a good layer of salt before heading up the package.

greater or less extent,
sounded a considerable

to an almost sure source
the following hints on

made,—1st, as to qual-

and a distinguishing mark
the sale of a good lot if

worked into each other
after tryer is put through

and be thoroughly worked

can be seen at our ware-
work of amalgamating
ghly. The cost is very

salt, with a very little
efficient in strength, and
against using saltpetre.

ry much to the judgment
when received from the
side. The salt must be
with the butter, as is too

, the butter should be put
ere.

latter is quite insuitable
use packed in tubs. The
but when these cannot be
be of uniform shape and
diameter, top and bottom.
d butter packed in such
larger sizes. The dry
, and the packer's name
, or burned on the top of

salt sprinkled on the inside
covered on the top with a
then washed out, and this
e package.



