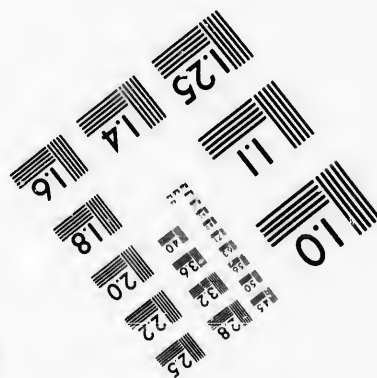
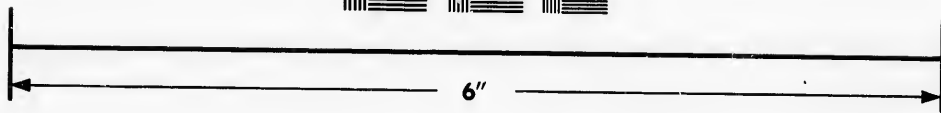
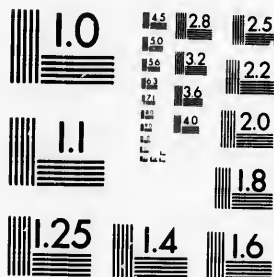


**IMAGE EVALUATION  
TEST TARGET (MT-3)**



**Photographic  
Sciences  
Corporation**

23 WEST MAIN STREET  
WERSTER, N.Y. 14580  
(716) 872-4503

**CIHM/ICMH  
Microfiche  
Series.**

**CIHM/ICMH  
Collection de  
microfiches.**



Canadian Institute for Historical Microreproductions / Institut canadien de microreproductions historiques

**© 1986**

Technical and Bibliographic Notes/Notes techniques et bibliographiques

The Institute has attempted to obtain the best original copy available for filming. Features of this copy which may be bibliographically unique, which may alter any of the images in the reproduction, or which may significantly change the usual method of filming, are checked below.

L'Institut a microfilmé le meilleur exemplaire qu'il lui a été possible de se procurer. Les détails de cet exemplaire qui sont peut-être uniques du point de vue bibliographique, qui peuvent modifier une image reproduite, ou qui peuvent exiger une modification dans la méthode normale de filmage sont indiqués ci-dessous.

- Coloured covers/  
Couverture de couleur
- Covers damaged/  
Couverture endommagée
- Covers restored and/or laminated/  
Couverture restaurée et/ou pelliculée
- Cover title missing/  
Le titre de couverture manque
- Coloured maps/  
Cartes géographiques en couleur
- Coloured ink (i.e. other than blue or black)/  
Encre de couleur (i.e. autre que bleue ou noire)
- Coloured plates and/or illustrations/  
Planches et/ou illustrations en couleur
- Bound with other material/  
Relié avec d'autres documents
- Tight binding may cause shadows or distortion  
along interior margin.  
La reliure serrée peut causer de l'ombre ou de la  
distorsion le long de la marge intérieure
- Blank leaves added during restoration may  
appear within the text. Whenever possible, these  
have been omitted from filming.  
Il se peut que certaines pages blanches ajoutées  
lors d'une restauration apparaissent dans le texte,  
mais, lorsque cela était possible, ces pages n'ont  
pas été filmées.
- Additional comments: / [Printed ephemera] [4] p.  
Commentaires supplémentaires:

- Coloured pages/  
Pages de couleur
- Pages damaged/  
Pages endommagées
- Pages restored and/or laminated/  
Pages restaurées et/ou pelliculées
- Pages discoloured, stained or foxed/  
Pages décolorées, tachetées ou piquées
- Pages detached/  
Pages détachées
- Showthrough/  
Transparence
- Quality of print varies/  
Qualité inégale de l'impression
- Includes supplementary material/  
Comprend du matériel supplémentaire
- Only edition available/  
Seule édition disponible
- Pages wholly or partially obscured by errata  
slips, tissues, etc., have been refilmed to  
ensure the best possible image/  
Les pages totalement ou partiellement  
obscurcies par un feuillet d'errata, une pelure,  
etc., ont été filmées à nouveau de façon à  
obtenir la meilleure image possible.

This item is filmed at the reduction ratio checked below/  
Ce document est filmé au taux de réduction indiqué ci-dessous.

10X	12X	14X	16X	18X	20X	22X	24X	26X	28X	30X	32X
								✓			

The copy filmed here has been reproduced thanks to the generosity of:

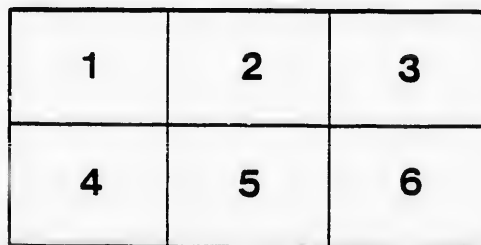
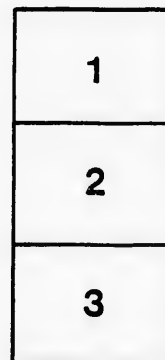
D. B. Weldon Library  
University of Western Ontario  
(Regional History Room)

The images appearing here are the best quality possible considering the condition and legibility of the original copy and in keeping with the filming contract specifications.

Original copies in printed paper covers are filmed beginning with the front cover and ending on the last page with a printed or illustrated impression, or the back cover when appropriate. All other original copies are filmed beginning on the first page with a printed or illustrated impression, and ending on the last page with a printed or illustrated impression.

The last recorded frame on each microfiche shall contain the symbol  $\rightarrow$  (meaning "CONTINUED"), or the symbol  $\nabla$  (meaning "END"), whichever applies.

Maps, plates, charts, etc., may be filmed at different reduction ratios. Those too large to be entirely included in one exposure are filmed beginning in the upper left hand corner, left to right and top to bottom, as many frames as required. The following diagrams illustrate the method:



L'exemplaire filmé fut reproduit grâce à la générosité de:

D. B. Weldon Library  
University of Western Ontario  
(Regional History Room)

Les images suivantes ont été reproduites avec le plus grand soin, compte tenu de la condition et de la netteté de l'exemplaire filmé, et en conformité avec les conditions du contrat de filmage.

Les exemplaires originaux dont la couverture en papier est imprimée sont filmés en commençant par le premier plat et en terminant soit par la dernière page qui comporte une empreinte d'impression ou d'illustration, soit par le second plat, selon le cas. Tous les autres exemplaires originaux sont filmés en commençant par la première page qui comporte une empreinte d'impression ou d'illustration et en terminant par la dernière page qui comporte une empreinte.

Un des symboles suivants apparaîtra sur la dernière image de chaque microfiche, selon le cas: le symbole  $\rightarrow$  signifie "A SUIVRE", le symbole  $\nabla$  signifie "FIN".

Les cartes, planches, tableaux, etc., peuvent être filmés à des taux de réduction différents. Lorsque le document est trop grand pour être reproduit en un seul cliché, il est filmé à partir de l'angle supérieur gauche, de gauche à droite, et de haut en bas, en prenant le nombre d'images nécessaire. Les diagrammes suivants illustrent la méthode.

LONDON PTD & LITHO CO.

MICHIGAN, OHIO  
CANADIAN CIRCUIT

EIGHTEEN  
THEATRES

CLEVELAND, CINCINNATI, BUFFALO,  
DETROIT, TORONTO,  
TOLEDO, LONDON, HAMILTON,  
WOODSTOCK, BAGINAW,  
GRAND RAPIDS, BAY CITY AND  
JACKSON.

# Grand OPERA HOUSE London.

C. J. WHITNEY. A. E. ROOTE. ONTARIO.  
- LESSEE. MANAGER



W. SMITH.

E. HOLLAND.

W. S. PARTRIDGE.

## SMITH & BROS.

THE  
LEADING  
SANITARY  
PLUMBERS  
-AND-  
HEATING  
ENGINEERS  
OF  
WESTERN  
ONTARIO.

376  
RICHMOND STREET,

LONDON.

OPPOSITE GRAND OPERA HOUSE BUILDING.

A full stock of Supplies always on hand.

TELEPHONE 538.

LADIES! THE ONLY WAY TO GET HELP IS THROUGH THE "FREE PRESS" WANT COLUMN.



**Parisian  
Steam  
Laundry**

73 & 75 DUNDAS STREET.

BRANCH OFFICES:

226 Dundas St. 252 Waterloo. 410 Hamilton Rd.  
280 " " 572 Pall Mall. 241 Wellington  
310 " " 380 Richmond. 338 Ridout.  
632 " " 185

J. K. SPRY, Manager.

**HUESTON'S**

**LIVERY,**

**Goupe & Cab Stables**

WELLINGTON STREET.

Finest Horses and Carriages in the City.

OPEN DAY AND NIGHT. TELEPHONE 441.

**ROBT. HUESTON,**

Proprietor.

**H. McKENNA,**

—FOR—

**Choice Cigars, Tobaccos**

AND PIPES.

ALWAYS OPEN .....

..... AFTER THE OPERA.

225 DUNDAS STREET.

**FURS!**

**FURSI + FURSI**

TRY

**RIVARD**

For Ladies' and Gents'

: FINE - FURS :

Best Assortment in the City.

**Rivard**

London's Fashionable Hatter  
and Furrier,

400 RICHMOND-ST.

**WILLIAMS' Pianos** CANADA'S FAVORITE

Cannot be excelled for touch, singing quality, delicacy and great power of tone, with highest excellence of work-manship.

ALL THE LATEST VOCAL AND INSTRUMENTAL

MUSIC RECEIVED AS PUBLISHED.

Musical Instruments of all kinds, Strings and Fittings  
AT LOWEST PRICES.

**R. S. WILLIAMS & SON,** 171 DUNDAS STREET,  
LONDON, ONT.

J. A. CRODEN, Manager.

.. Play and Players ..

PROGRAMME

**FRIDAY & SATURDAY**

OCT. 27th & 28th. 1893

**Saturday Matinee.**

**STAIR, BRADY & GARWOOD'S**

**Company of Comedians,**

UNDER THE MANAGEMENT OF

**MR. G. D. JOHNSTON,**

In the Funniest of all plays,

**"Chip o' the Old Block"**

with that eminent enemy of the blues,

**R. L. SCOTT**

(Programme continued on next page.)

**FITZGERALD, SCANDRETT & CO.**

169 Dundas Street.

— IMPORTERS OF —

English Biscuits, Fine Sardines,

Olives, Pickles,

— AND ALL LINES OF —

**Staple and Fancy Groceries.**

ESTABLISHED 1831.

**H. DAVIS & SON,**  
**WATCHMAKERS**  
AND  
**JEWELLERS**

DEALERS IN

Watches, Clocks, Jewellery, Spectacles,  
Silver Plated Ware, &c.

170 DUNDAS ST., LONDON, ONT.

**W. T. STRONG**

Dispensing  
Chemist,

184 Dundas Street,  
LONDON, - ONTARIO.

**BROWN'S**

**Central Shoe Store,**

145 DUNDAS ST.

Our fall stock of 1893 surpasses in style, finish and material anything heretofore attempted in the shoe line in London. We handle all the popular and standard styles; we noted for keeping the most satisfactory goods known to the modern buyer, and have superior advantages in procuring the latest American novelties in shoes. We buy no inferior goods; all our stock is of the highest grade and quality, and we guarantee the best results. We carry a complete assortment from the leading manufacturers in the United States and Canada. We can and will sell first-class Fine Footwear cheaper than any other house in the west; and we have a very large, new stock of Men's, Youth's and Children's Staple lines in which we cannot be undersold. We have just received a large assortment of the most handsome and artistic designs in Ladies' and Gents' Dress Shoes, and a beautiful selection of Overgaiters in all the leading colors. Our speciality in Ladies' Evening Shoes of the latest New York shades is certainly charming, and must be seen to be appreciated. Our new lines of Baby Moccasins are really elegant. Mothers should not fail to see them.

See our Windows . .

Inspect our Goods . .

Ascertain our Prices

And we are sure you will be agreeably surprised.

**John S. Brown,**

TELEPHONE 881.

IF YOU WANT THE BEST, TAKE THE "FREE PRESS." ALL THE NEWS!

—GO TO—  
**SOUTHCOTTS**  
 —FOR YOUR—  
**Overcoating**  
 —OR—  
**FALL & SUITING**  
 AND GET SATISFACTION AT  
 CLOSE PRICES.  
**361 RICHMOND STREET.**

I-I-I-I-I-I-I-I-I-I

PRINTERS  
 LITHOGRAPHERS  
 ENGRAVERS

**The**  
**London**  
**Printing and**  
**Lithographing**  
**Co'y,**

—SUCCESSION TO FREE PRESS  
 PRINTING AND LITHO.  
 DEPARTMENT'S.

OFFICE,  
 "FREE PRESS"  
 BUILDING.

BEST WORK  
 AT MODERATE  
 PRICES.

I-I-I-I-I-I-I-I-I-I

**TEGUMSEH HOUSE**  
 LONDON.



Directly opposite G.T.R. depot;  
 street railway past the doors;  
 convenient to all the wholesale  
 and retail business houses of  
 city, making it the most desir-  
 able hotel in the city; elevator,  
 and heated throughout with  
 steam.

Porter in attendance on  
 arrival of all trains.

**RATES, \$2.00 AND \$2.50**  
 PER DAY,

ACCORDING TO LOCATION.

No Extra Charge For Baggage.

**C. W. DAVIS, PROP.**

**GRAHAM BROS**

FOR  
**Fall and Winter Underclothing**  
 ALL SIZES AND WEIGHTS.  
**CHEAPEST STOCK IN THE CITY.**  
**159 DUNDAS STREET,**

**«Programme Continued.»**

**CAST - OF - CHARACTERS**

"MAJOR," an old salt . . . . . R. L. SCOTT  
 (As played by him over 2,200 times.)  
 Jack Lightfoot, "Right in it," . . . . . Ren Shields  
 Zeph Spanker, a wrecker with a record }  
 Bob Ridley, a janitor of distinction } Chas R. Boyd  
 O'Shaughnessy, Copper 41,144 . . . . . S. W. Stevens  
 Stiff Stubbins, because he can't help it. . . Sam A Rose  
 Robert Barton, after the yellow metal. . . Chas. E. Bowen  
 Pixey, Mage's Fairy, light and airy . . . Miss Leola Bell  
 Francesca, { a creature of }  
 { circumstances } . . . Miss Fanny Warren  
 Jerusha, { with a breach }  
 { of promise suit } . . . Miss Minnie Wilson  
 Anna Anybody, another lost Rose. . . Miss Lottie Geyer  
 Firemen, Police, Bell Boys, Etc.

**SYNOPSIS**

ACT I—Mage's Home at Deep Haven. Pixey's Party.  
 ACT II.—Barton's Flats in New York City. Mage and Jerusha in Town.  
 ACT III.—Mage at Home. The Bachelor's Wash Day.

**EXECUTIVE STAFF:**

G. D. Johnston, . . . . . Manager.  
 Geo. T. Braden, . . . . . Agent.  
 Sam Rose . . . . . Master of Properties.

(Programme continued on last page.)

**McLEAN'S HARDWARE**

—FOR—

**Bissell's Carpet Sweepers.**

WE CAN SHOW YOU TWELVE DIFFERENT STYLES SAME  
 AS ARE NOW DISPLAYED BY THE BISSELL COM-  
 PANY AT THE WORLD'S FAIR.

CALL AND SEE THESE GOODS

—AT—

**McLEAN'S HARDWARE,**  
**151 Dundas Street.**

**Wm. Stevely & Son,**

—THE LEADING DEALERS IN—

**STOVES, RANGES,**

.. AND ..

**HOUSE FURNISHING GOODS.**

OUR STOCK IS THE LARGEST.

OUR PRICES THE LOWEST.

**362 RICHMOND STREET.**

PHONE 452.

**W. T. STRONG,**

*Dispensing*

*Chemist,*

**184 DUNDAS ST.,**

**LONDON, ONT.**

.. FOR ..

**Fine Etchings....**

—AND—

**Engravings**

—TRY—

**O. B. GRAVES,**

**222 DUNDAS STREET.**

**A WORD**

TO the gentlemen patrons of  
 the GRAND. You can  
 have your full dress suit pressed  
 and cleaned up on short notice  
 by sending it to the LONDON  
 CLEANING AND REPAIRING  
 WORKS.

We do not wash your clothes,  
 but have them renovated by  
 first-class tailors who repair  
 them as well.

Parcels called for and deliv-  
 ered Office of works in the  
 Arcade Barber Shop, Richmond  
 Street. PHONE 981.

## Dress Patterns

We are showing select and exclusive

... DESIGNS ...

NO TWO ALIKE.

Fine Dressmaking.

TELEPHONE 611.

## Fine Dry Goods - Mantles, &c.

# A. Rolfe

## LADIES!

Do not fail to see our

## Mantles

in the latest cut in

Childrens and Ladies.

A PLEASURE TO SHOW GOODS.

202 DUNDAS STREET.

## EDY BROS.

The Artistic Photographers,

—RECEIVED—

Three First Prizes

## DIPLOMA

For Finest Display of Photography  
AT WESTERN FAIR, 1893.

Cabinet Photos, \$3 per doz.

## EDY BROS.,

214 DUNDAS STREET.

## « Programme Concluded »

The Furniture used on stage is supplied by JOHN FERBISON & SON,  
Furniture Manufacturers.

During the evening, incidental to the stage performance,  
the ORCHESTRA of the Grand Opera House, under  
the direction of MR. FRED. L. EVANS, will  
perform the following selections:

OVERTURE—"Golden Harp,"	.....	Schaefer
MARCH—"Berkshire,"	.....	Koch
SELECTION—"Poor Jonathan,"	.....	Millocker
WALTZ—"Message,"	.....	Csibulka
GAVOTTE—"Sans Souci,"	.....	Csibulka

The above programme subject to transposition.

N. B.—The Orchestra of the Grand Opera House may be secured  
for engagements outside the theatre, by applying at or addressing the  
Box Office.



"BETWEEN THE ACTS"

CONSIDER that the throat/real season and the coal-  
burning season start about the same time, and  
make a note of it that we fill all orders, large  
or small, in a prompt and satisfactory manner.

## CAMERON'S

CITY OFFICE, - 421 Richmond St.  
YARD, - - Burwell St., at G. T. R.

## The HUB

### Restaurant,

203 & 205 DUNDAS STREET.

For a NICE LUNCH after the  
Opera, go to the  
Hub Restaurant.

Steaks, Chops, Chicken,  
Oysters, Etc.

OPEN TILL 12.00 P.M.

J. W. MARTIN, Prop.  
(Late of the Martin House)

## NEXT + ATTRACTION

COMING! COMING!

# CORRINNE

—AND THE—

## Kimball Opera Co.

WE call the attention of our business men to the  
PROGRAM as an advertising medium. It reaches  
the class of people whose trade you want, and the  
way to get that trade is to make yourself known.

## BELTON & ROOTE,

BILL POSTING,

DISTRIBUTING

...AND...

GENERAL ADVERTISING AGENTS

Control all the Bill Boards and Dead Walks through-  
out the City. Population of City, 40,000.

All orders for Bill Posting, Distributing, Card  
Tacking, and General Advertising for  
Western Ontario will receive  
prompt attention.

OFFICE: BOX OFFICE, OPERA HOUSE.

## Roses, Carnations,

## Palms,

## Ferns, Bulbs,

# J. GAMMAGE & SONS,

213 Dundas Street.

## INDIAN... TEA IMPORTING HOUSE.

NEW BLENDS, DELICIOUS AND ECONOMICAL, AT MODERATE PRICES.

"English Breakfast," "Five o'clock Tea," & "Club House" Blends.  
60c. 50c. 45c.

These Blends are standard selections of choice Teas. Highly recommended to  
families for their fine quality and economical properties.

## S. FUCE,

—IMPORTER OF—  
CHOICE TEAS, 436 Richmond St.  
TELEPHONE 858. LONDON.



