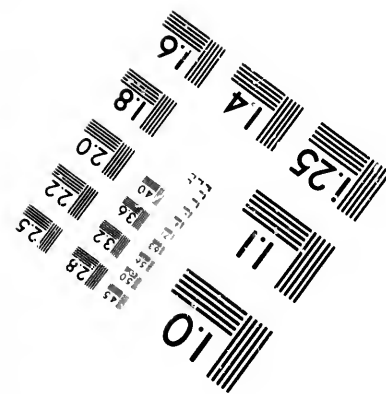
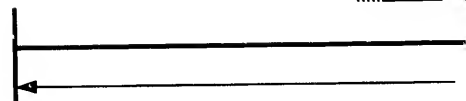
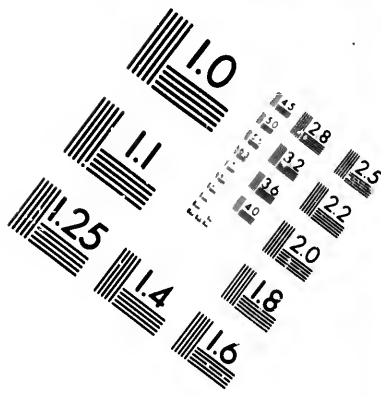


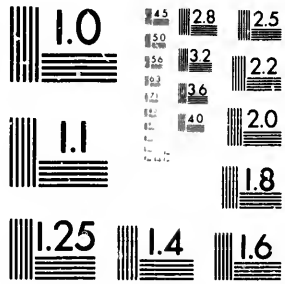
IMAGE EV
TEST TAR



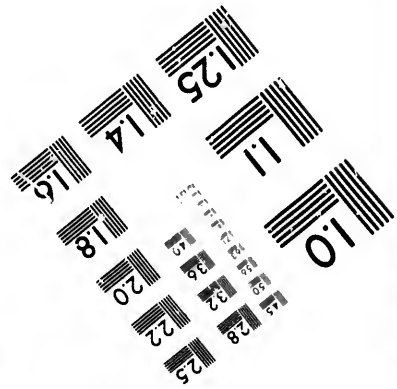
Photograph
Science
Corporati



**IMAGE EVALUATION
TEST TARGET (MT-3)**



6"



**Photographic
Sciences
Corporation**

23 WEST MAIN STREET
WEBSTER, N.Y. 14580
(716) 872-4503

**CIHM/ICMH
Microfiche
Series.**



Canadian Institute for Historical Microreproductions / Institut canadien de microreproductions historiques

© 19

CMH
he

CIHM/ICMH
Collection de
microfiches.



Microreproductions / Institut canadien de microreproductions historiques

1981

The Institute has attempted to obtain the best original copy available for filming. Features of this copy which may be bibliographically unique, which may alter any of the images in the reproduction, or which may significantly change the usual method of filming, are checked below.

- Coloured covers/
Couverture de couleur
- Covers damaged/
Couverture endommagée
- Covers restored and/or laminated/
Couverture restaurée et/ou pelliculée
- Cover title missing/
Le titre de couverture manque
- Coloured maps/
Cartes géographiques en couleur
- Coloured ink (i.e. other than blue or black)/
Encre de couleur (i.e. autre que bleue ou noire)
- Coloured plates and/or illustrations/
Planches et/ou illustrations en couleur
- Bound with other material/
Relié avec d'autres documents
- Tight binding may cause shadows or distortion
along interior margin/
La reliure serrée peut causer de l'ombre ou de la
distortion le long de la marge intérieure
- Blank leaves added during restoration may
appear within the text. Whenever possible, these
have been omitted from filming/
Il se peut que certaines pages blanches ajoutées
lors d'une restauration apparaissent dans le texte,
mais, lorsque cela était possible, ces pages n'ont
pas été filmées.
- Additional comments:/
Commentaires supplémentaires:

This item is filmed at the reduction ratio checked below/
Ce document est filmé au taux de réduction indiqué ci-dessous

10X			14X			18X		
<input type="checkbox"/>	<input type="checkbox"/>	<input type="checkbox"/>	<input type="checkbox"/>	<input type="checkbox"/>	<input type="checkbox"/>	<input type="checkbox"/>	<input type="checkbox"/>	<input type="checkbox"/>
12X			16X			20X		

The copy filmed here has been reproduced thanks to the generosity of:

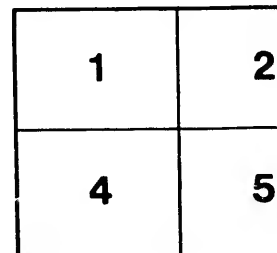
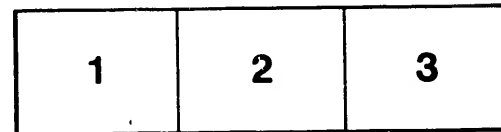
Library of Congress
Photoduplication Service

The images appearing here are the best quality possible considering the condition and legibility of the original copy and in keeping with the filming contract specifications.

Original copies in printed paper covers are filmed beginning with the front cover and ending on the last page with a printed or illustrated impression, or the back cover when appropriate. All other original copies are filmed beginning on the first page with a printed or illustrated impression, and ending on the last page with a printed or illustrated impression.

The last recorded frame on each microfiche shall contain the symbol \rightarrow (meaning "CONTINUED"), or the symbol ∇ (meaning "END"), whichever applies.

Maps, plates, charts, etc., may be filmed at different reduction ratios. Those too large to be entirely included in one exposure are filmed beginning in the upper left hand corner, left to right and top to bottom, as many frames as required. The following diagrams illustrate the method:



uced thanks

L'exemplaire filmé fut reproduit grâce à la
générosité de:

Library of Congress
Photoduplication Service

st quality
legibility
th the

Les images suivantes ont été reproduites avec le
plus grand soin, compte tenu de la condition et
de la netteté de l'exemplaire filmé, et en
conformité avec les conditions du contrat de
filimage.

are filmed
ding on
ted impres-
ate. All
ing on the
impres-
a printed

Les exemplaires originaux dont la couverture en
papier est imprimée sont filmés en commençant
par le premier plat et en terminant soit par la
dernière page qui comporte une empreinte
d'impression ou d'illustration, soit par le second
plat, selon le cas. Tous les autres exemplaires
originaux sont filmés en commençant par la
première page qui comporte une empreinte
d'impression ou d'illustration et en terminant par
la dernière page qui comporte une telle
empreinte.

ofiche
g "CON-
"END"),

Un des symboles suivants apparaîtra sur la
dernière image de chaque microfiche, selon le
cas: le symbole → signifie "A SUIVRE", le
symbole ▼ signifie "FIN".

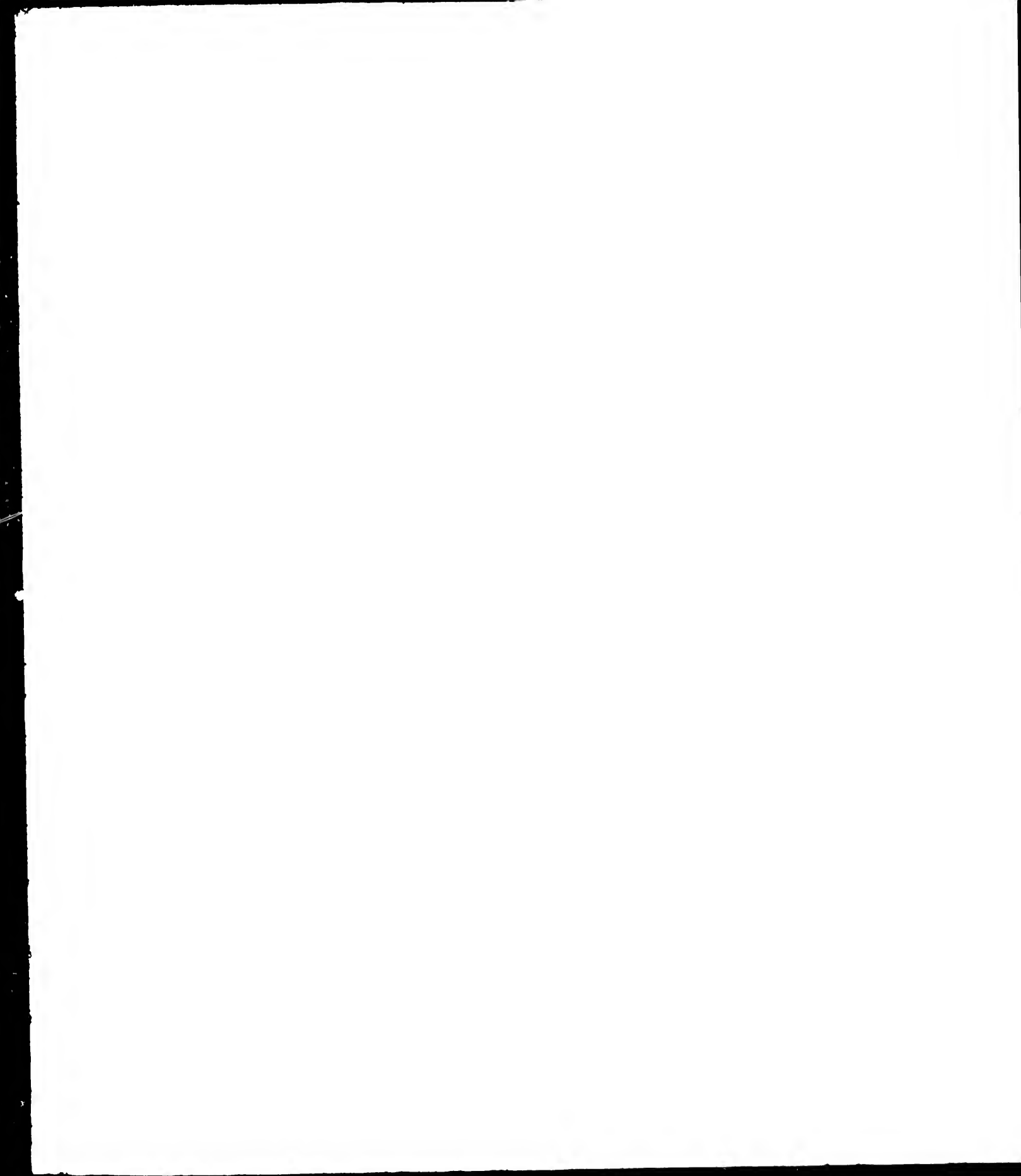
ned at
erge to be
filmed
er, left to
nes as
trate the

Les cartes, planches, tableaux, etc., peuvent être
filmés à des taux de réduction différents.
Lorsque le document est trop grand pour être
reproduit en un seul cliché, il est filmé à partir
de l'angle supérieur gauche, de gauche à droite,
et de haut en bas, en prenant le nombre
d'images nécessaire. Les diagrammes suivants
illustrent la méthode.

	3
--	---

1
2
3

1	2	3
4	5	6



WITH THE COMPLIMENTS OF A. G. BELL,
1331 Connecticut Avenue,
Washington, D. C.

METHODS
OF
INSTRUCTING THE DEAF
IN THE
UNITED STATES.
STATISTICS COMPILED FROM THE
AMERICAN ANNALS OF THE DEAF

BY

ALEXANDER GRAHAM BELL,

SEPTEMBER, 1898.

26.6
55-30

WASHINGTON, D. C. :
GIBSON BROS., PRINTERS AND BOOKBINDERS.
1898.

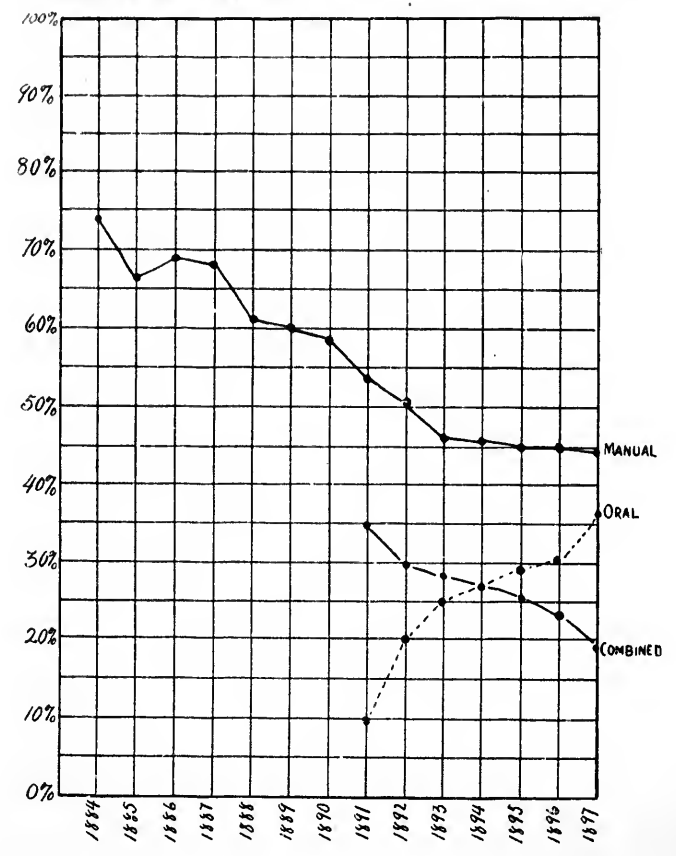
4
copy 2

H 12471
P 4
copy 2.

m. 13 3 788/09

21932

Percentage of pupils in American Schools for the Deaf taught wholly by Manual Methods, taught wholly by Oral Methods, and the percentage taught by Combined Systems.



LIBRARY OF CONGRESS
1908.
CITY OF WASHINGTON.

UNITED STATES.—Percentage of pupils taught by each method.

Year.	Total number of pupils	Percentage receiving instruction in Articulation.	METHODS OF INSTRUCTION.						
			Percentage taught wholly by Manual Methods.			Percentage taught wholly by Oral Methods.			Percentage taught by Combined Systems.
			Total.	Freesh, Manual, or Sign Method.	Manual Alphabet Method.	Total.	German, Oral, or Speech-reading Method.	Amiclear Method.	
1	2	3	4	5	6	7	8	9	
1884.....	100%	27.2	72.8						
1885.....	100%	33.5	66.5						
1886.....	100%	30.8	69.2						
1887.....	100%	32.0	68.0						
1888.....	100%	38.8	61.2						
1889.....	100%	39.7	60.3						
1890.....	100%	41.3	58.7						
1891.....	100%	46.0	54.0			10.4	10.4		35.6
1892.....	100%	49.4	50.6			19.0	19.9		29.5
1893.....	100%	54.0	46.0			25.7	24.7	0.96	28.3
1894.....	100%	54.4	45.6			26.8	25.6	1.24	27.6
1895.....	100%	54.9	45.1			29.3	27.7	1.61	25.6
1896.....	100%	54.9	45.1			30.5	28.8	1.74	24.3
1897.....	100%	56.4	43.6			37.2	35.5	1.70	19.2

Additional copies of these tables may be obtained upon application to the Hon. John Hitz, Supt. of Volta Bureau, Washington, D. C.

A. G. B.

