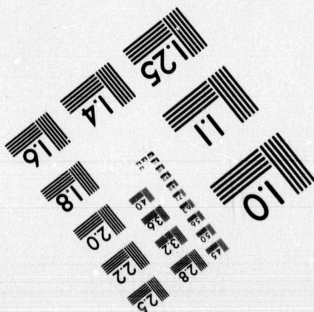
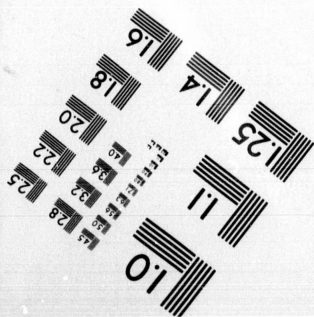
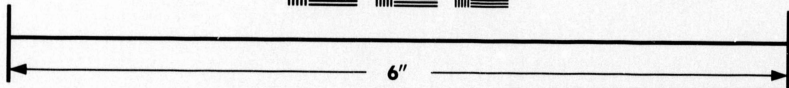
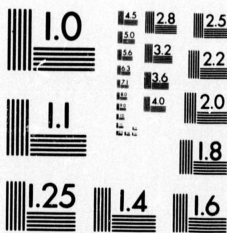


**IMAGE EVALUATION
TEST TARGET (MT-3)**



**Photographic
Sciences
Corporation**

23 WEST MAIN STREET
WEBSTER, N.Y. 14580
(716) 872-4503

1.5 2.8
1.8 2.2
1.8 2.0
1.8 2.2
1.8 2.0
1.8 2.2
1.8 2.0
1.8 2.2
1.8 2.0
1.8 2.2

**CIHM/ICMH
Microfiche
Series.**

**CIHM/ICMH
Collection de
microfiches.**



Canadian Institute for Historical Microreproductions / Institut canadien de microreproductions historiques

1.5 2.8
1.8 2.2
1.8 2.0
1.8 2.2
1.8 2.0
1.8 2.2
1.8 2.0
1.8 2.2
1.8 2.0
1.8 2.2

© 1981

Technical and Bibliographic Notes/Notes techniques et bibliographiques

The Institute has attempted to obtain the best original copy available for filming. Features of this copy which may be bibliographically unique, which may alter any of the images in the reproduction, or which may significantly change the usual method of filming, are checked below.

L'Institut a microfilmé le meilleur exemplaire qu'il lui a été possible de se procurer. Les détails de cet exemplaire qui sont peut-être uniques du point de vue bibliographique, qui peuvent modifier une image reproduite, ou qui peuvent exiger une modification dans la méthode normale de filmage sont indiqués ci-dessous.

- Coloured covers/
Couverture de couleur
- Covers damaged/
Couverture endommagée
- Covers restored and/or laminated/
Couverture restaurée et/ou pelliculée
- Cover title missing/
Le titre de couverture manque
- Coloured maps/
Cartes géographiques en couleur
- Coloured ink (i.e. other than blue or black)/
Encre de couleur (i.e. autre que bleue ou noire)
- Coloured plates and/or illustrations/
Planches et/ou illustrations en couleur
- Bound with other material/
Relié avec d'autres documents
- Tight binding may cause shadows or distortion
along interior margin/
La reliure serrée peut causer de l'ombre ou de la
distortion le long de la marge intérieure
- Blank leaves added during restoration may
appear within the text. Whenever possible, these
have been omitted from filming/
Il se peut que certaines pages blanches ajoutées
lors d'une restauration apparaissent dans le texte,
mais, lorsque cela était possible, ces pages n'ont
pas été filmées.
- Additional comments:/
Commentaires supplémentaires:

- Coloured pages/
Pages de couleur
- Pages damaged/
Pages endommagées
- Pages restored and/or laminated/
Pages restaurées et/ou pelliculées
- Pages discoloured, stained or foxed/
Pages décolorées, tachetées ou piquées
- Pages detached/
Pages détachées
- Showthrough/
Transparence
- Quality of print varies/
Qualité inégale de l'impression
- Includes supplementary material/
Comprend du matériel supplémentaire
- Only edition available/
Seule édition disponible
- Pages wholly or partially obscured by errata
slips, tissues, etc., have been refilmed to
ensure the best possible image/
Les pages totalement ou partiellement
obscurcies par un feuillet d'errata, une pelure,
etc., ont été filmées à nouveau de façon à
obtenir la meilleure image possible.

This item is filmed at the reduction ratio checked below/
Ce document est filmé au taux de réduction indiqué ci-dessous.

10X	14X	18X	22X	26X	30X
<input type="checkbox"/>	<input type="checkbox"/>	<input type="checkbox"/>	<input checked="" type="checkbox"/>	<input type="checkbox"/>	<input type="checkbox"/>
12X	16X	20X	24X	28X	32X

The copy filmed here has been reproduced thanks to the generosity of:

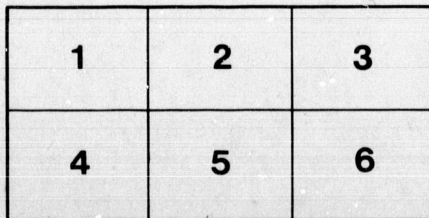
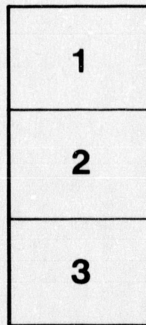
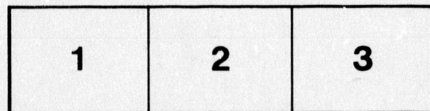
National Library of Canada

The images appearing here are the best quality possible considering the condition and legibility of the original copy and in keeping with the filming contract specifications.

Original copies in printed paper covers are filmed beginning with the front cover and ending on the last page with a printed or illustrated impression, or the back cover when appropriate. All other original copies are filmed beginning on the first page with a printed or illustrated impression, and ending on the last page with a printed or illustrated impression.

The last recorded frame on each microfiche shall contain the symbol \rightarrow (meaning "CONTINUED"), or the symbol ∇ (meaning "END"), whichever applies.

Maps, plates, charts, etc., may be filmed at different reduction ratios. Those too large to be entirely included in one exposure are filmed beginning in the upper left hand corner, left to right and top to bottom, as many frames as required. The following diagrams illustrate the method:



L'exemplaire filmé fut reproduit grâce à la générosité de:

Bibliothèque nationale du Canada

Les images suivantes ont été reproduites avec le plus grand soin, compte tenu de la condition et de la netteté de l'exemplaire filmé, et en conformité avec les conditions du contrat de filmage.

Les exemplaires originaux dont la couverture en papier est imprimée sont filmés en commençant par le premier plat et en terminant soit par la dernière page qui comporte une empreinte d'impression ou d'illustration, soit par le second plat, selon le cas. Tous les autres exemplaires originaux sont filmés en commençant par la première page qui comporte une empreinte d'impression ou d'illustration et en terminant par la dernière page qui comporte une telle empreinte.

Un des symboles suivants apparaîtra sur la dernière image de chaque microfiche, selon le cas: le symbole \rightarrow signifie "A SUIVRE", le symbole ∇ signifie "FIN".

Les cartes, planches, tableaux, etc., peuvent être filmés à des taux de réduction différents. Lorsque le document est trop grand pour être reproduit en un seul cliché, il est filmé à partir de l'angle supérieur gauche, de gauche à droite, et de haut en bas, en prenant le nombre d'images nécessaire. Les diagrammes suivants illustrent la méthode.

re
létails
as du
modifier
ar une
image

es

errata
to

pelure,
on à



Mr. C. ...
Mrs. C. ...



F
(
(

OCTOBE

Can. Canadian Pacific
Railway Co.

GEORGE DUNCAN
TICKET AGENT
42 SPARKS ST.
OTTAWA. 7

To the
**HAWAIIAN
ISLANDS**

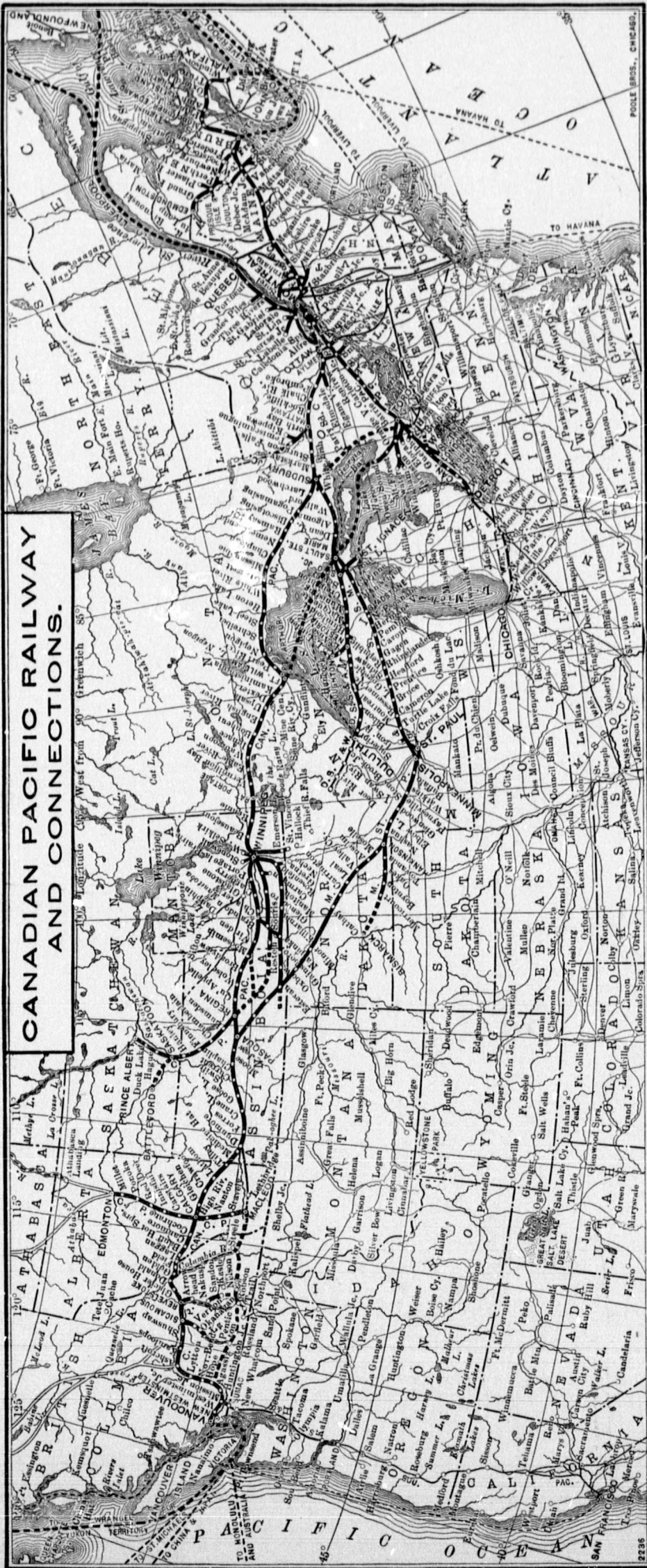
THE
PARADISE
OF THE
PACIFIC



AVENUE OF ROYAL PALMS.

BY THE
CANADIAN PACIFIC RAILWAY
AND
CANADIAN-AUSTRALIAN S.S. LINE

OCTOBER, 1898.



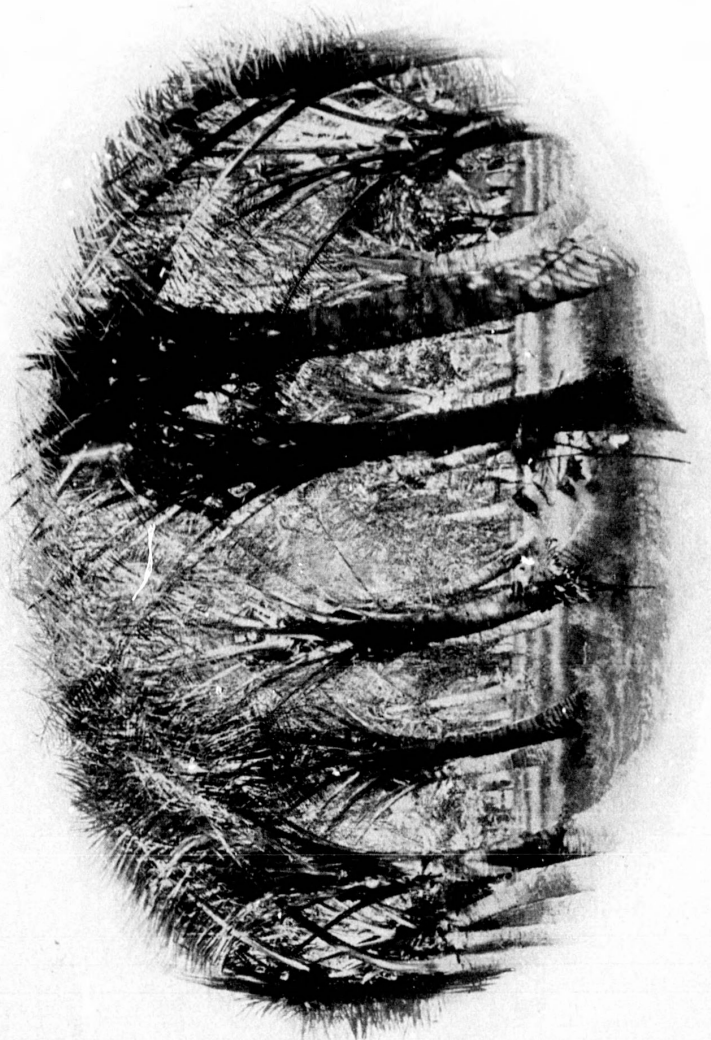
**CANADIAN PACIFIC RAILWAY
AND CONNECTIONS.**

THE
a delig
attracti
the res

and pl
lovely
of the
incomp

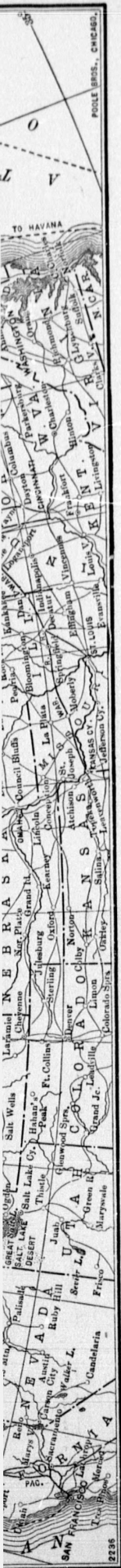
A PACIFIC PARADISE.

THE recent acquisition of the Hawaiian Islands by the United States has opened to the pleasure and health-seeking tourist a delightful semi-tropical country of virgin beauty and unrivalled attractiveness—a new world to Americans and Europeans, in which the resources of modern civilization contribute materially to an easy



COCOANUT GROVE — "OLD PLANTATION."

and pleasurable exploration. The climatic conditions render this lovely mid ocean group of islands a charming resort at all seasons of the year, but especially during our winter months it offers an incomparable retreat for the delicately constituted.



A Magnificent Outing ❁

The trip to Hawaii and a tour through the islands, under the new conditions, is a mere pleasure outing, shorn of the discomforts and inconveniences which in the past were usually attendant on prolonged journeys. It involves an interesting railway ride across the North American continent through the Dominion of Canada, and the most delightful in the whole possible range of extended sea excursions from Vancouver down the Pacific.



BULLOCK RIDING.

Across the Continent ❁

The transcontinental trip is made by the Canadian Pacific Railway from Montreal, the commercial metropolis of Canada, which is a day's or a night's ride from New York, Boston, and other eastern American cities. But tourists may travel by Niagara Falls and see the wonders of the Great Cataract, and either connect with the trans-

conti
or du
at Fo
Owen
reache
cruise
Upper
Fro
throug
neapo
on the

An un
the pictu
of Manit
the great
sublimity
Columbia
ment of v
of the C

A PACIFIC PARADISE.

continental train at Toronto, the chief city of the Province of Ontario, or during the season of navigation (from May to end of October), at Fort William, at the western extremity of Lake Superior from Owen Sound on Georgian Bay, an arm of Lake Huron, which is reached from Toronto by rail, the latter route including an enjoyable cruise on the Great Upper Lakes in the Canadian Pacific magnificent Upper Lake Steamships.

From the Middle-Western States the route is by the "Soo Pacific" through Minnesota and Northern Dakota from St. Paul and Minneapolis, which connects with the Canadian Pacific at Moose Jaw on the plains of Western Canada.

BULLOCK RIDING.



KAMEHAMEHA STATUE, HONOLULU.

An unusual diversity of scenery—from the rugged wildness of the picturesque north shore of Lake Superior to the pastoral beauty of Manitoba's mammoth wheat fields, and from the tranquillity of the great buffalo plains of the Canadian Northwest to the awful sublimity and grandeur of the titanic Mountain ranges of British Columbia—characterizes the overland journey, the perfect enjoyment of which is made possible by the excellence of the train service of the Canadian Pacific Railway, whose sleeping and dining cars

cific Rail-
, which is
er eastern
ls and see
the trans-

are models of comfort and luxury. In the mountains, the Railway Company has established a series of elegantly appointed hotels at very attractive points — at Banff, in the Canadian National Park; Louise, the lowest of the lovely Lakes in the Clouds; Field, near the summit of the Rockies; Glacier, at the foot of Great Glacier of the Selkirks; Revelstoke, on the Columbia River, the present entrance to the Great Kootenay mining region; and at North Bend,



COAST AT ONOMEA, HAWAII.

in the wonderful cañons of the Fraser — at any of which a day or longer can be delightfully spent amongst the most sublime of Nature's marvels. From Revelstoke the famous gold and silver camps of the Kootenay can be reached by the Columbia River and Arrow Lakes, through a wonderfully picturesque region, lying between the Selkirk and Gold Mountain Ranges. Tourists should leave home, however, in time to reach Vancouver not later than the day previous to the date of sailing, as the steamer leaves at daybreak.

Dow

The
of the
two fo
ing po
artisti
the so
are sp
ngent
seven
pleasu
from t

The

Honc
landing
the Can
the drea
and the
of tropi
the wide
ing in lo
hills — a
and con
loitering

The a
grouped
steamers
different
and a pe
ing of to
world's b

Down the Pacific ❁

The Steamships "Warrimoo" and "Miowera," and the "Aorangi" of the Canadian-Australian Line, are magnificent new vessels, the two former of 3,500 tons burden and the latter of 4,500, with steaming power of 17 1-2 knots. These steamships are elaborately and artistically appointed, and lighted throughout with electricity; and the social halls, music, ladies' and smoking rooms and the cabins are spacious and airy, and provided with all the accessories human ingenuity suggests for the comfort and ease of the traveller. The seven days occupied in the sea voyage is a week of continuous pleasure on the placid Pacific, the fascination of the trip beginning from the moment of departure from Vancouver.



OAHU PRISON.

The Land of Perpetual Bloom ❁

Honolulu, the chief city of the Hawaiian group, is the port of landing for those destined for the islands, and the port of call for the Canadian-Australian steamships, where the first insight is given of the dreamy native life of the Pacific. Here perpetual summer reigns, and the fragrance of flowers unceasingly fills the air. The wealth of tropical vegetation, the abundance of fruit, the waving palms, the wide acres of sugar cane, the happy natives and the sea breaking in long rolling waves over the coral reefs, backed by the volcanic hills — all these make up a picture that can never fade from memory, and combine to emphasize the novelty and augment the charms of loitering in this Paradise of the Pacific.

The attractions of Hawaii are almost illimitable, but they are so grouped that all can be seen in a remarkably brief time. Pleasure steamers make regular trips to the various points of interest on the different islands which constitute this Wonderland of the Pacific, and a perfect system has been adopted for the conveyance and housing of tourists at moderate rates. Honolulu itself is one of the world's beauty spots, continually wreathed with the profuse luxuri-

the Railway
ed hotels at
tional Park ;
; Field, near
Great Glacier
the present
North Bend,



a day or
of Nature's
r camps of
and Arrow
between the
ave home,
ay previous

ance and bloom of tropical vegetation, and near it are many lovely resorts to which the additional charms of historical association is lent. Within short distances are Nuuañu Pali, an historic precipice over which the Oahuns were driven in thousands by King Kamehameha the Conqueror; to the summit of Mount Tantalus, the highest point near the city; to Punch Bowl Hill; to Waikiki Beach, a delightful bathing place and summer resort, and to many other interesting and lovely spots. One could willingly linger here indefinitely.



VOLCANO OF KILAUEA.

Pele's Domain ❁

The wonderful Volcanoes, however, are too inviting to those fond of adventure, and the now extinct crater of Haleakala, the largest in the world, can easily be reached, or the descent made to the fiery pit of Kilauea into the very portals of Halemaumau, the plutonic home of the Goddess Pele. This fascinating "House of Fire," as

the
durin
"J
rolle
broke
clash
and
elasti

their up
and dro
gleamed
"In ti
fountain
dine,' fill
cliffs wit
then rusl

A PACIFIC PARADISE.

e many lovely
association is
toric precipice
King Kame-
Tantalus, the
aikiki Beach,
o many other
r here indefi-

the great burning crater is named, is thus described by a writer during one of its periodical eruptions :

"The thin crust on the molten lakes was rent apart and there rolled out a blood-red wave whose incandescent crest swept on and broke in fiery spray against the massive wall. Other raging billows clashed together and tossed their mingled volumes of silver, gold and crimson high in the glowing air. The superheated, highly elastic gases tore through the liquid matter, carrying with them in

VOLCANO OF KILAUEA.



NATIVE, WITH SURF BOARD.

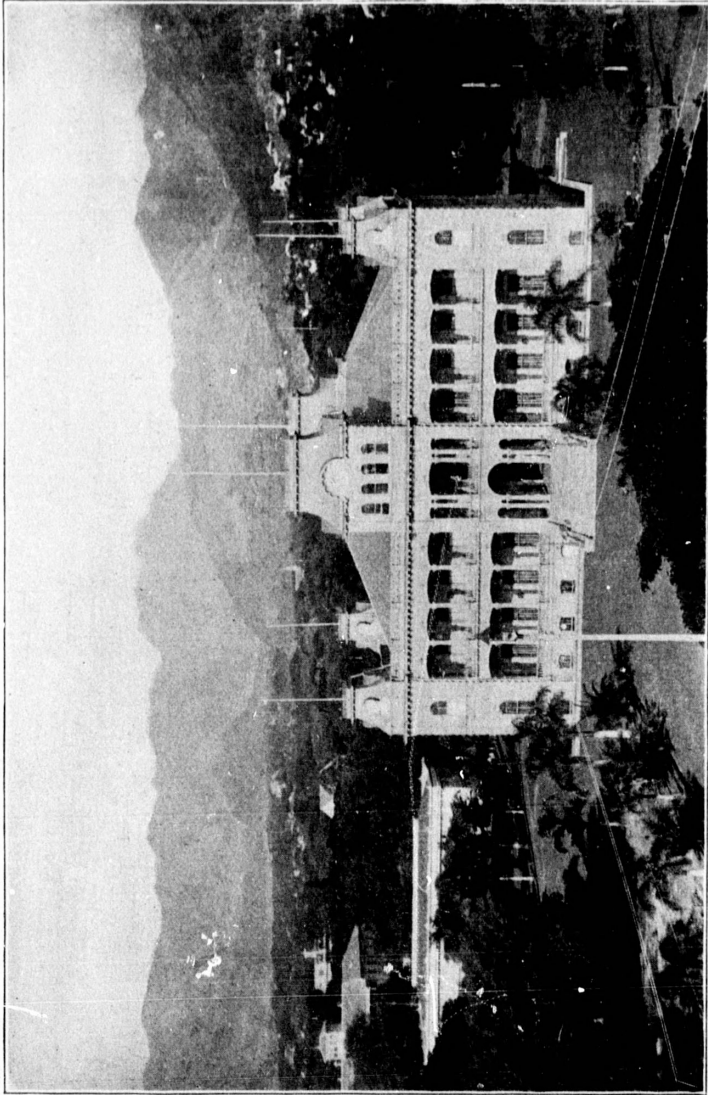
those fond
the largest
o the fiery
e plutonic
Fire," as

their upward rush lava spun into fine filaments called 'Pele's hair,' and drove before them sulphur clouds, through which the moon gleamed with a dull, livid light.

"In the midst of the lakes' brilliant confusion there played a fountain of blood-red lava, 'which did the tumultuous sea incarnadine,' filling the air with crimson light and tingeing the beetling cliffs with rich color. The heat-wave whirled about the pit, now and then rushing over the brink and glowing about us, while the roar of

escaping gases, the rumble of falling rocks about the lakes and the queer, spluttering cough of the belched-up lava filled our ears with strange sounds.

"This beautiful and awe-inspiring spectacle lasted for many minutes and then the light and heat subsided and the lakes' surface cooled again to sombre blackness. The moon came out again, and



EXECUTIVE BUILDING, HONOLULU.

by its light and that of our lanterns we retraced our steps over the lava to where horses were in waiting to carry the ladies of the party up the hill again to the 'Volcano House.'

Several routes to these famous Volcanoes, involving different expenditures and length of time, may be followed. At regular intervals steamers leave Honolulu for the island of Hawaii, on which is the fiery Kilauea, there being a choice of two routes—one by Maui and around the northern coast of Hawaii to Hilo, and the

othe
Retu
entir
and
of tr

Oth

St
the i
are th
ing sa
Th
anae,
tation
lately



Betw
lotus-ea
and no
tourist
climate
tions ar
amongst
plantati
remains
The s
South V
B.C., me
America
group.

e lakes and the
our ears with

for many min-
e lakes' surface
out again, and

other along Maui and the southern coast of Hawaii to Punaluu. Return can be made by a different route from that going, and the entire cost is from \$50.00 to \$80.00 (which includes steamer, hotel, and all other necessary expenses), according to route and duration of trip.

Other Interesting Islands ❁

Steamers leave Honolulu twice a week for the different ports on the island of Kauai, the lovely "Garden of the Group," on which are the largest sugar plantations in the world, the marvellous barking sands and several wonderful caves.

The Oahu Railway runs daily from Honolulu to Ewa and Wai-anae, passing en route numerous rice, banana and pine-apple plantations, and giving a view of the famed Pearl River locks and the lately founded Pearl City.



NATIVES MAKING POI.

Between the two extremes of winsomeness and weirdness in this lotus-eating summer land of the Kanakas is a world of rare pleasures and novel experiences, for Hawaii is an incomparable field for the tourist as well as for those seeking health and recuperation. Its climate is equable and salubrious, its bright people and their institutions and customs and modes of life curious and interesting; and amongst strange cultures of coffee, sugar, rice and fruit on immense plantations, showing progress and advancement, will be found the remains of ancient temples and cities of refuge and monuments of a vanished idolatry.

The steamers of the Canadian-Australian line from Sydney, New South Wales, New Zealand and Fiji and Vancouver and Victoria, B.C., meet at Honolulu. Those returning by the next steamer to America have four weeks at their disposal to explore the entire group.

EXECUTIVE BUILDING, HONOLULU.

ps over the
of the party

ig different
At regular
ii, on which
s—one by
ilo, and the



BREAD FRUIT.

The Climate ❁

A summary of the meteorological observations at Oahu College, 1894-95, gives the highest and lowest readings of the thermometer as follows:

	July.	Aug.	Sept.	Oct.	Nov.	Dec.
1894 — Highest.....	83	86	85	82	82	79
Lowest.....	68	63	68	67	66	62

	Jan.	Feb.	Mar.	April.	May.	June.
1895 — Highest.....	79	80	79	84	85	84
Lowest.....	57	60	62	62	63	67

Th
90° a
74-43
Th
Septe
Janua
June,

CAN.

N:

WAR
AORA
MIOW

And al
Steam

Nai

WARR
AORAT
MIOWI
WARR

And abo
are subject
Fort Willi
east of tho
R. Agent.

A PACIFIC PARADISE.

The highest temperature recorded in the six years, 1890-95, was 90° and the lowest 54°, the general average during that period being 74.43°.

The amount of rainfall, 1894-95, was: July, 1.09; August, 0.26; September, 1.63; October, 2.41; November, 10.57; December, 3.72; January, 2.63; February, 2.56; March, 2.15; April, 2.10; May, 1.58; June, 1.67 — a total for the year of 32.37 inches.

CANADIAN-AUSTRALIAN ROYAL MAIL STEAMSHIP LINE.

INTENDED SAILINGS—WESTBOUND.

Name of Steamship.	Vancouver. Leave at Daybreak.	Honolulu, H. I. Arrive and Leave.
WARRIMOO.....	Oct. 20, 1898.	Oct. 28, 1898.
AORANGL.....	Nov. 17, 1898.	Nov. 25, 1898.
MIOWERA.....	Dec. 15, 1898.	Dec. 23, 1898.

And about every four weeks thereafter. Sailings shown are approximate only. Steamers call at Victoria, B.C.

INTENDED SAILINGS—EASTBOUND.

Name of Steamship.	Honolulu, H. I. Arrive and Leave.	Vancouver. Arrive about
WARRIMOO.....	Sept. 30, 1898.	Oct. 8, 1898.
AORANGL.....	Oct. 28, 1898.	Nov. 5, 1898.
MIOWERA.....	Nov. 25, 1898.	Dec. 3, 1898.
WARRIMOO.....	Dec. 23, 1898.	Dec. 31, 1898.

And about every four weeks thereafter. Sailings shown are approximate only, and are subject to change without notice. From points west of Chicago, St. Paul, and Fort William, berths can be secured from District Passenger Agent, Vancouver, and east of those points from the General Passenger Agent, Montreal, through any C. P. R. Agent.

thu College,
thermometer

Nov.	Dec.
82	79
66	62
May.	June.
35	84
53	67

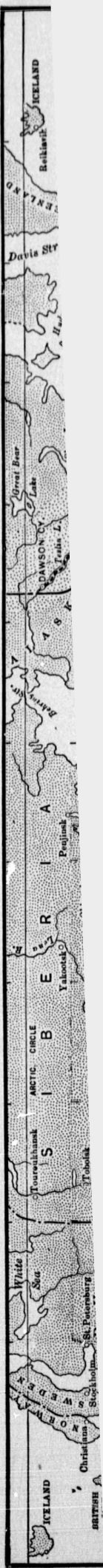
AGENCIES.

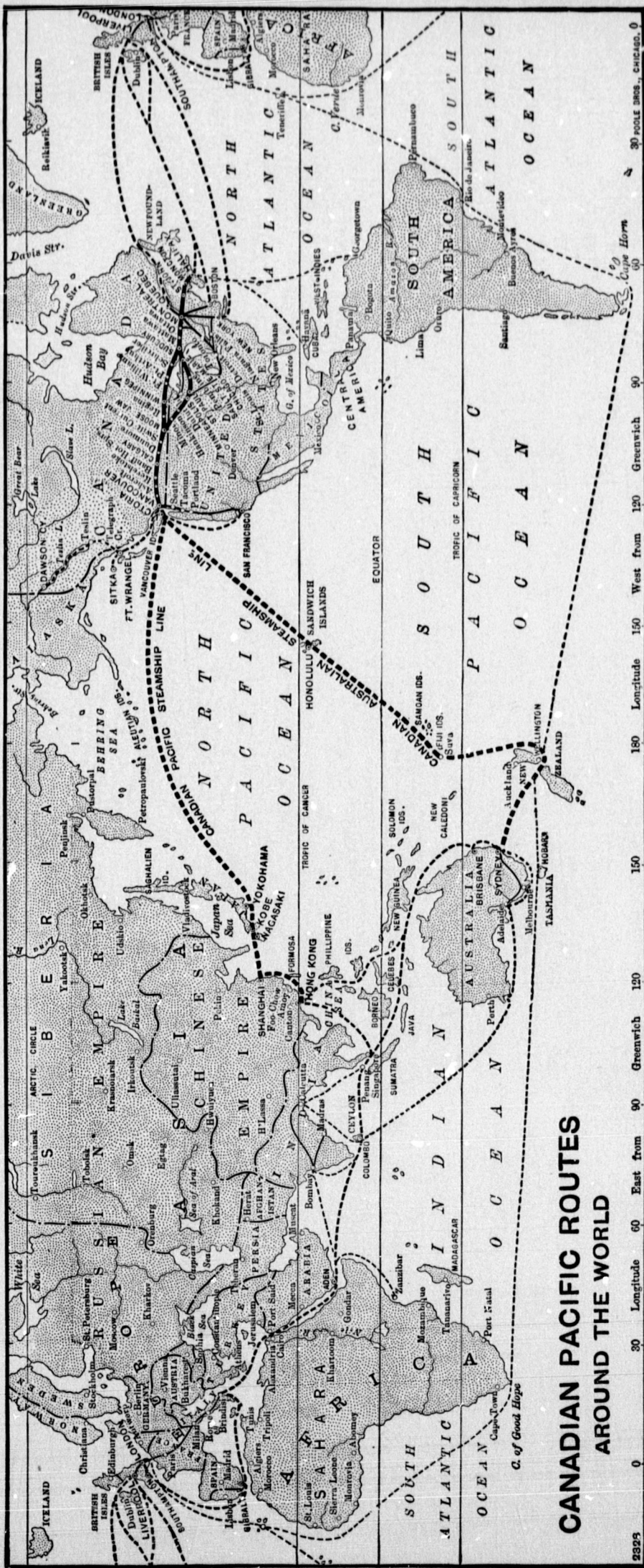
- Boston, Mass.....H. J. Colvin, District Passenger Agent, 197 Washington Street.
- Buffalo, N.Y.A. J. Shuhnan, City Freight and Passenger Agent, 233 Main Street.
- Chicago, Ill.....J. Francis Lee, General Agent Passenger Department, 228 South Clark Street.
- Detroit, Mich.....A. E. Edmonds, City Passenger Agent, 11 Fort St., W.
- Glasgow, Scotland.....Archer Baker, European Traffic Agent, 67 St. Vincent St.
- Halifax, N.S.....C. S. Philips, Ticket Agent, 107 Hollis Street.
- Hamilton, Ont.....W. J. Grant, Commercial Agent, cor. King and James Sts.
- Hong Kong.....D. E. Brown, General Agent, China, Japan, etc.
- Honolulu, H.I.Theo. H. Davis & Co., Limited.
- Kobe, Japan.....F. S. Morse.
- Liverpool, Eng.....Archer Baker, European Traffic Agent, 7 James Street.
- London, Eng.....Archer Baker, European Traffic Agent, 67 and 68 King William Street, E.C., and 30 Cockspur Street, S.W.
- London, Ont.....T. R. Parker, Ticket Agent, 161 Dundas Street.
- Marquette, Mich.....G. W. Hibbard, Gen'l Passenger Agent, So. Shore Line.
- Minneapolis, Minn.....W. R. Callaway, Gen'l Pass'r Agent, Soo Pacific Line.
- Montreal, Que.....Wm. F. Egg, City Passenger Agent, 129 St. James St.
- New Whatcom, Wash..F. R. Johnson, Passenger Agent, 1293 Dock Street.
- New York, N.Y.....E. V. Skinner, General Eastern Agent, 353 Broadway.
- Niagara Falls, N.Y.....D. Isaacs, Prospect House.
- Ottawa, Ont.....J. E. Parker, City Passenger Agent, 42 Sparks Street.
- Paris, France.....Hernu, Peron & Co., Ticket Agents, 61 Boulevard Haussmann.
International Sleeping Car Co., 3 Place de l'Opera.
- Philadelphia, Pa.....H. McMurtre, Freight and Passenger Agent, Corner Third and Chestnut Streets.
- Portland, Me.G. H. Thompson, Ticket Agent, Maine Central Railroad, Union Station.
- Portland, Ore.....Hamilton Abbott, Passenger Agent, 146 Third Street.
- Quebec, Que.....George Duncan, Passenger Agent, Opposite Post Office.
- Sault Ste. Marie, Mich..T. R. Harvey, Steamship Wharf; F. E. Ketchum, Depot Ticket Agent.
- St. John, N.B.....A. H. Notman, District Passenger Agent.
- St. Paul, Minn.....W. S. Thorn, Ass't Gen'l Pass'r Agt., Soo Pacific Line.
- San Francisco, Cal.....M. M. Stern, District Freight and Passenger Agent, Chronicle Building.
Goodall, Perkins & Co., Agents P. C. S.S. Co., 10 Market Street.
- Seattle, Wash.....W. R. Thompson, Yesler Building, 609 Front Street.
- Shanghai, ChinaJardine, Matheson & Co.
- Suva, FijiBrown & Joske.
- Tacoma, Wash.....F. A. Valentine, Freight and Passenger Agent, 1023 Pacific Avenue.
- Toronto, Ont.....C. E. McPherson, Assistant General Passenger Agent, 1 King Street, East.
- Vancouver, B.C.....E. J. Coyle, District Passenger Agent; James Sclater, Ticket Agent.
- Victoria, B.C.....B. W. Greer, Freight and Pass'r Agt., Government St.
- Winnipeg, Man.....W. M. McLeod, City Ticket Agent, 471 Main Street.
- Yokohama, Japan.....Wm. T. Payne, Gen'l Traffic Agent for Japan, 14 Bund.

C. E. E. USSHER,
General Passenger Agent,
(Lines East of Port Arthur)
MONTREAL.

R. KERR,
Traffic Manager,
(Lines West of Fort William)
WINNIPEG.

D. McNICOLL, Passenger Traffic Manager,
MONTREAL.





**CANADIAN PACIFIC ROUTES
AROUND THE WORLD**

Longitude 0 30 East from 60 Greenwich 120 150 180 Longitude 150 West from 120 Greenwich 90 30 POOLE BROS., CHICAGO, ILL.

gent, 197 Washington
 Passenger Agent, 233
 Passenger Department,
 ent, 11 Fort St., W.
 ent, 67 St. Vincent St.
 llis Street.
 . King and James Sts.
 t, Japan, etc.

ent, 7 James Street.
 ent, 67 and 68 King
 ckspur Street, S.W.
 ndas Street.
 ent, So. Shore Line.
 , Soo Pacific Line.
 129 St. James St.
 3 Dock Street.
 it, 353 Broadway.

12 Sparks Street.
 ents, 61 Boulevard
 ce de l'Opera.
 ger Agent, Corner
 e Central Railroad,
 46 Third Street.
 opposite Post Office.
 E. Ketchum, Depot
 ent.
 Soo Pacific Line.
 Passenger Agent,
 S.S. Co., 10 Mar-
 Front Street.

nger Agent, 1023
 Passenger Agent,
 ; James Sclater,
 Government St.
 r Main Street.
 Japan, 14 Bund.

ort William)
 EG.

To the
**HAWAIIAN
ISLANDS**

THE
PARADISE
OF THE
PACIFIC



AVENUE OF ROYAL PALMS.

BY THE
CANADIAN-PACIFIC RAILWAY
AND
CANADIAN-AUSTRALIAN S.S. LINE

OCTOBER, 1898.

PARADISE
THE
PACIFIC



AY
NE



