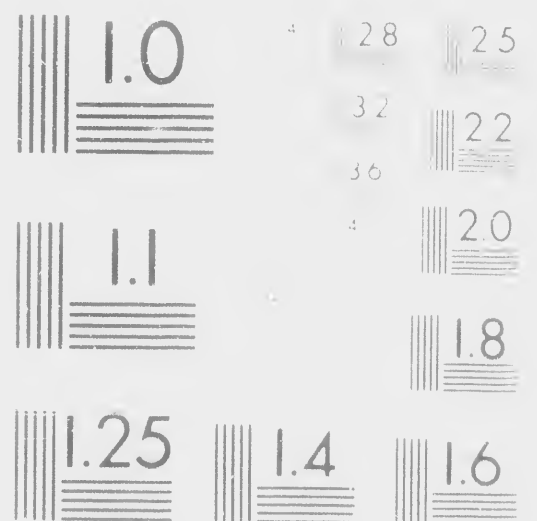
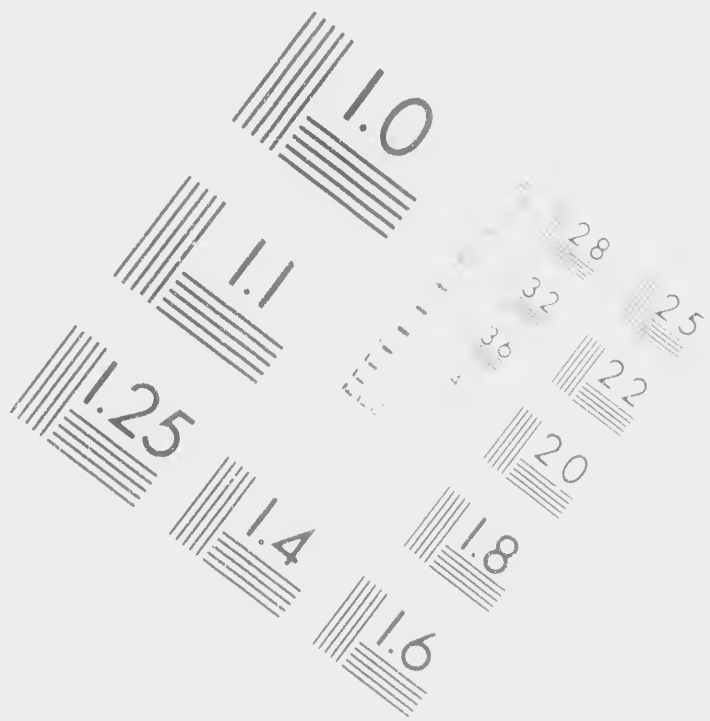


IMAGE EVALUATION TEST TARGET (MT-3)



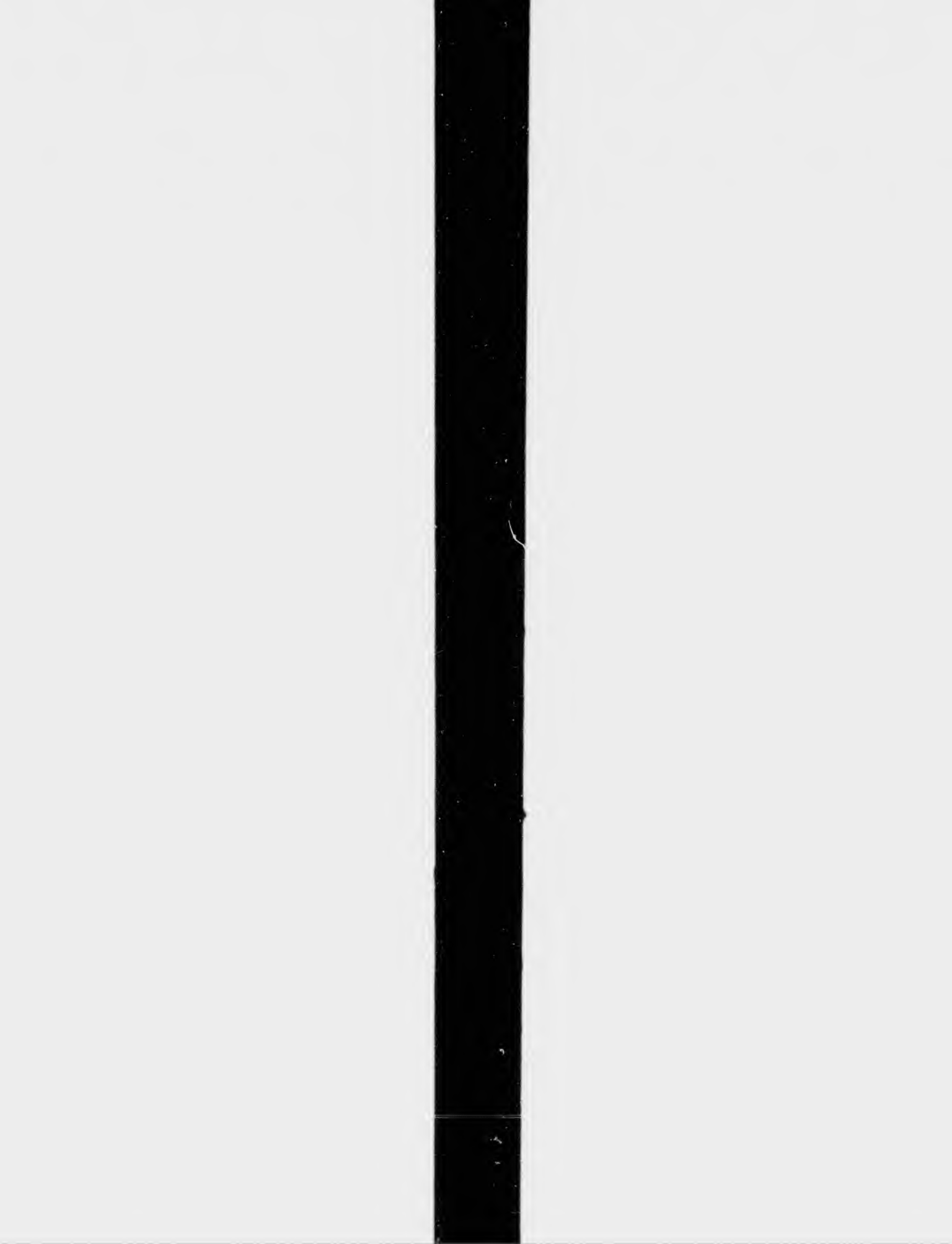


**CIHM/
Microf
Series.**

N
3)

CIHM/ICMH
Collection de
microfiches.

CIHM/ICMH
Collection de
microfiches.



Technical and Bibliographic Notes/Notes techniques et bibliographiques

The Institute has attempted to obtain the best original copy available for filming. Features of this copy which may be bibliographically unique, which may alter any of the images in the reproduction, or which may significantly change the usual method of filming, are checked below

L'Institut a microfilmé qu'il lui a été possible de cet exemplaire qui point de vue bibliographique une image reproduite, modification dans la méthode sont indiqués ci-dessous

- | | |
|--|--|
| <input type="checkbox"/> Coloured covers/
Couverture de couleur | <input type="checkbox"/> Coloured pages/
Pages de couleur |
| <input type="checkbox"/> Covers damaged/
Couverture endommagée | <input type="checkbox"/> Pages damaged/
Pages endommagées |
| <input type="checkbox"/> Covers restored and/or laminated/
Couverture restaurée et/ou pelliculée | <input type="checkbox"/> Pages restored and/or
Pages restaurées |
| <input type="checkbox"/> Cover title missing/
Le titre de couverture manque | <input type="checkbox"/> Pages discoloured/
Pages décolorées |
| <input type="checkbox"/> Coloured maps/
Cartes géographiques en couleur | <input type="checkbox"/> Pages detached/
Pages détachées |
| <input type="checkbox"/> Coloured ink (i.e. other than blue or black)/
Encre de couleur (i.e. autre que bleue ou noire) | <input type="checkbox"/> Showthrough/
Transparence |
| <input type="checkbox"/> Coloured plates and/or illustrations/
Planches et/ou illustrations en couleur | <input type="checkbox"/> Quality of print varies/
Qualité inégale de l'impression |
| <input type="checkbox"/> Bound with other material/
Relié avec d'autres documents | <input type="checkbox"/> Includes supplementary material/
Comprend du matériel supplémentaire |
| <input type="checkbox"/> Tight binding may cause shadows or distortion
along interior margin/ | <input type="checkbox"/> Only edition available/
Seule édition disponible |

liographiques

filmé le meilleur exemplaire
possible de se procurer. Les détails
qui sont peut-être uniques du
liographique, qui peuvent modifier
duite, ou qui peuvent exiger une
s la méthode normale de filmage
dessous.

ages/
couleur

aged/
mmagées

red and/or laminated/
urées et/ou pelliculées

coloured, stained or foxed/
orees, tachetées ou piquées

hed/
hées

h/
e

rint varies/
ale de l'impression

plementary material/
u matériel supplémentaire

available/
n disponible

The copy filmed here has been reproduced
to the generosity of:

Library of Congress
Photoduplication Service

The images appearing here are the best quality
possible considering the condition and legibility
of the original copy and in keeping with the
filming contract specifications.

Original copies in printed paper covers are
beginning with the front cover and ending with
the last page with a printed or illustrated im-
pression, or the back cover when appropriate.
Other original copies are filmed beginning with the
first page with a printed or illustrated im-
pression, and ending on the last page with a printed
or illustrated impression.

Maps, plates, charts, etc., may be filmed at
different reduction ratios. Those too large to be
entirely included in one exposure are filmed
beginning in the upper left hand corner, left to
right and top to bottom, as many frames as
required. The following diagrams illustrate the
method:

roduced thanks

L'exemplaire filmé fut reproduit grâce à la
générosité de:

vice

Library of Congress
Photoduplication Service

est quality
nd legibility
with the

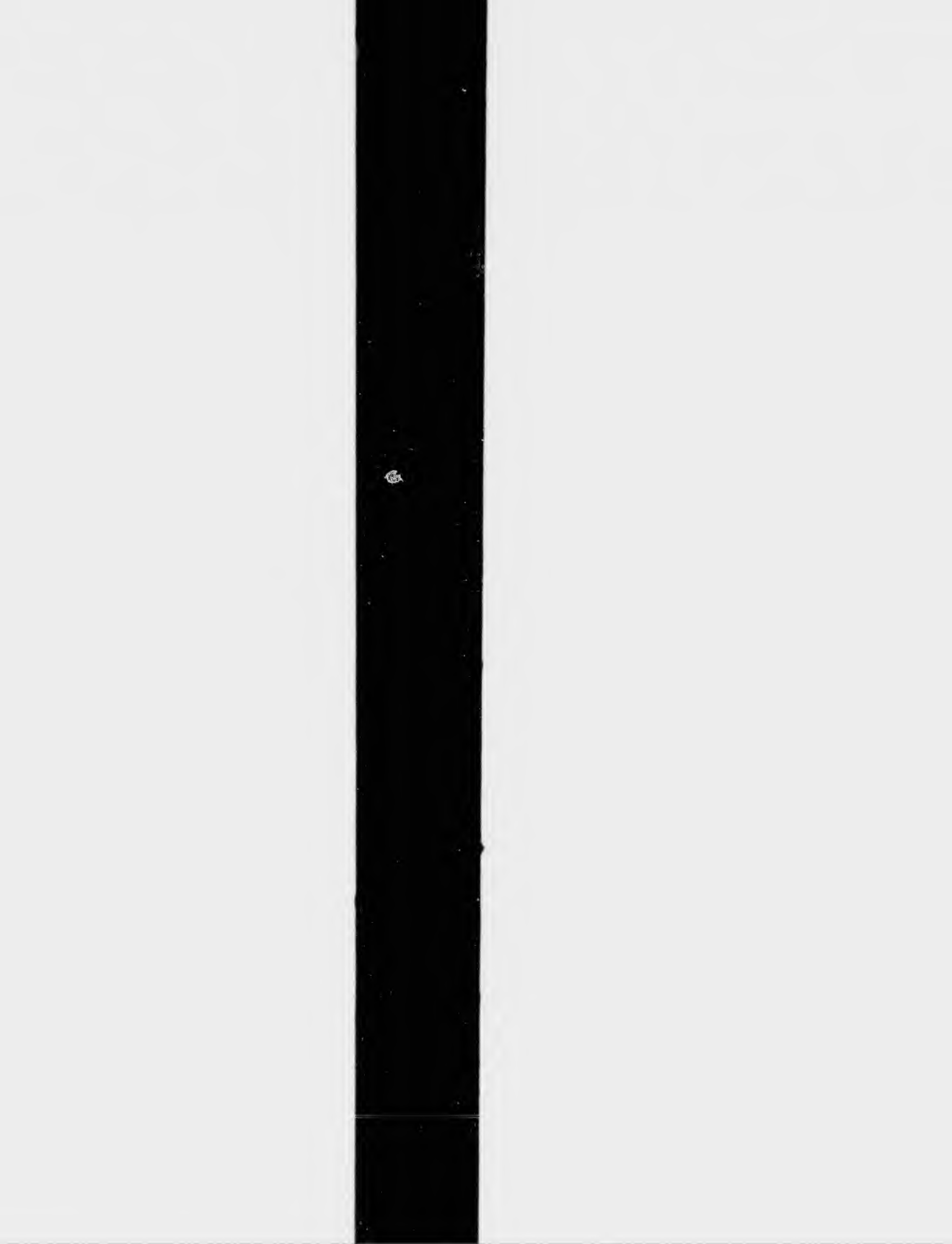
Les images suivantes ont été reproduites avec le
plus grand soin, compte tenu de la condition et
de la netteté de l'exemplaire filmé, et en
conformité avec les conditions du contrat de
filmage.

rs are filmed
nding on
ated impres-
riate. All
nning on the
d impres-
th a printed

Les exemplaires originaux dont la couverture en
papier est imprimée sont filmés en commençant
par le premier plat et en terminant soit par la
dernière page qui comporte une empreinte
d'impression ou d'illustration, soit par le second
plat, selon le cas. Tous les autres exemplaires
originaux sont filmés en commençant par la
première page qui comporte une empreinte
d'impression ou d'illustration et en terminant par
la dernière page qui comporte une telle
empreinte.

med at
large to be
filmed
er, left to
mes as
strate the

Les cartes, planches, tableaux, etc., peuvent être
filmés à des taux de réduction différents.
Lorsque le document est trop grand pour être
reproduit en un seul cliché, il est filmé à partir
de l'angle supérieur gauche, de gauche à droite,
et de haut en bas, en prenant le nombre
d'images nécessaire. Les diagrammes suivants
illustrent la méthode.



GE

The

W

TICK

On

Via St
and F
and 1
only f
Cor
Moun

Pas
Grand
Quebe

The

GRAND TRUNK RAILW'Y.

\$18 SAVED!

The Cheapest Excursion of the Season!!

Only \$7.00 from BOSTON to the

**White Mount'ns, Montreal,
QUEBEC, AND RETURN.**

TICKETS GOOD TO RETURN FOR 12 DAYS FROM DATE, INCLUSIVE.

Only \$3 to White Mountains and return.

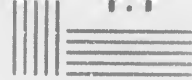
Tickets Good to return 6 Days from Date, inclusive.

Via Steamers to PORTLAND, leaving INDIA WHARF, Boston, on THURSDAY and FRIDAY, August 8th and 9th, and MONDAY and TUESDAY, August 12th and 13th, at 7 o'clock P.M. Excursion Tickets are good for above-named days only from Boston.

Connecting with the Cars of the Grand Trunk Railway at Portland for White Mountains, Montreal, and Quebec.

Passengers may stop over at White Mountains, Portland, or any Station on the Grand Trunk Railway, on their return, but not going—may go to Montreal or Quebec first, as they please. Will go by Railroad between Montreal and Quebec.

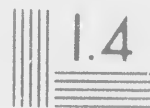
The White Mountains are only six miles from Gorham Station, on the Grand



1.8



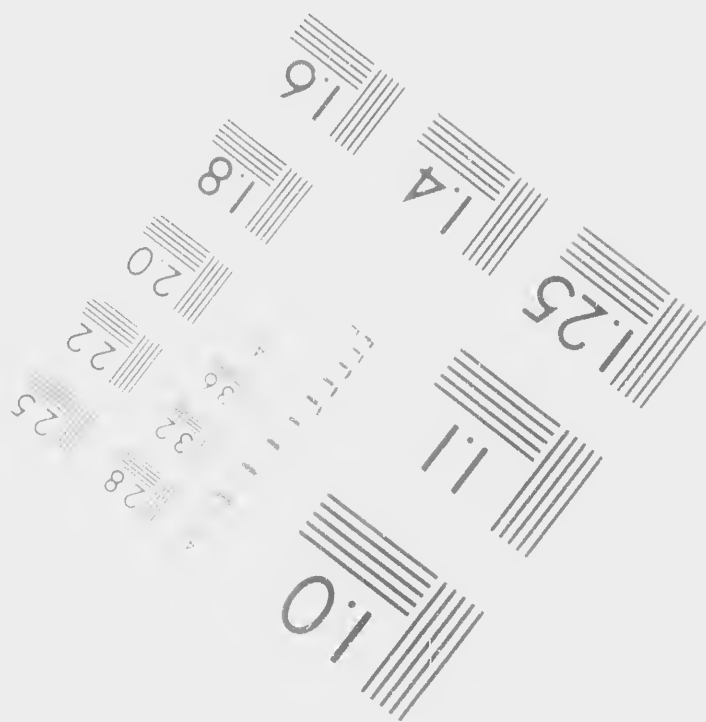
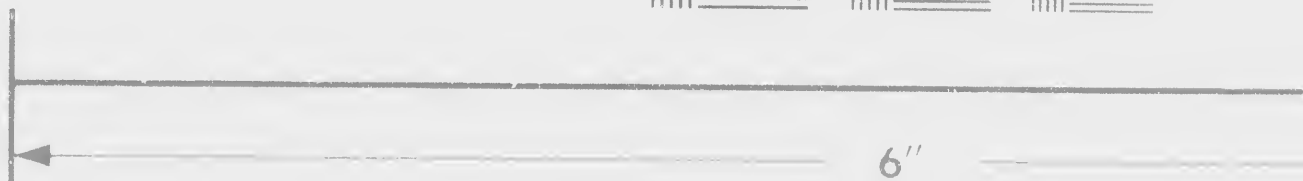
1.25



1.4



1.6

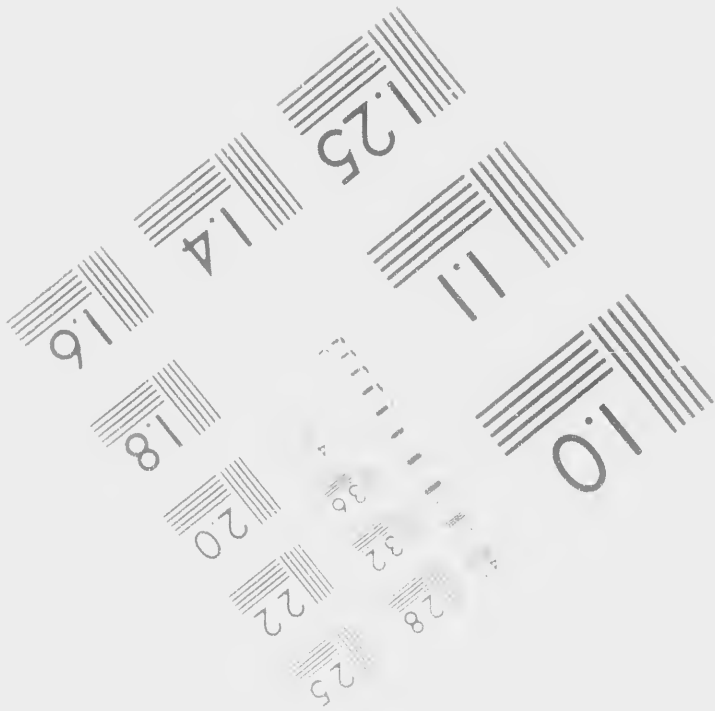


Photographic Sciences Corporation

23 WEST MAIN S
WEBSTER, N. Y. 1
716 / 872-45



Canadian Institute for Historical



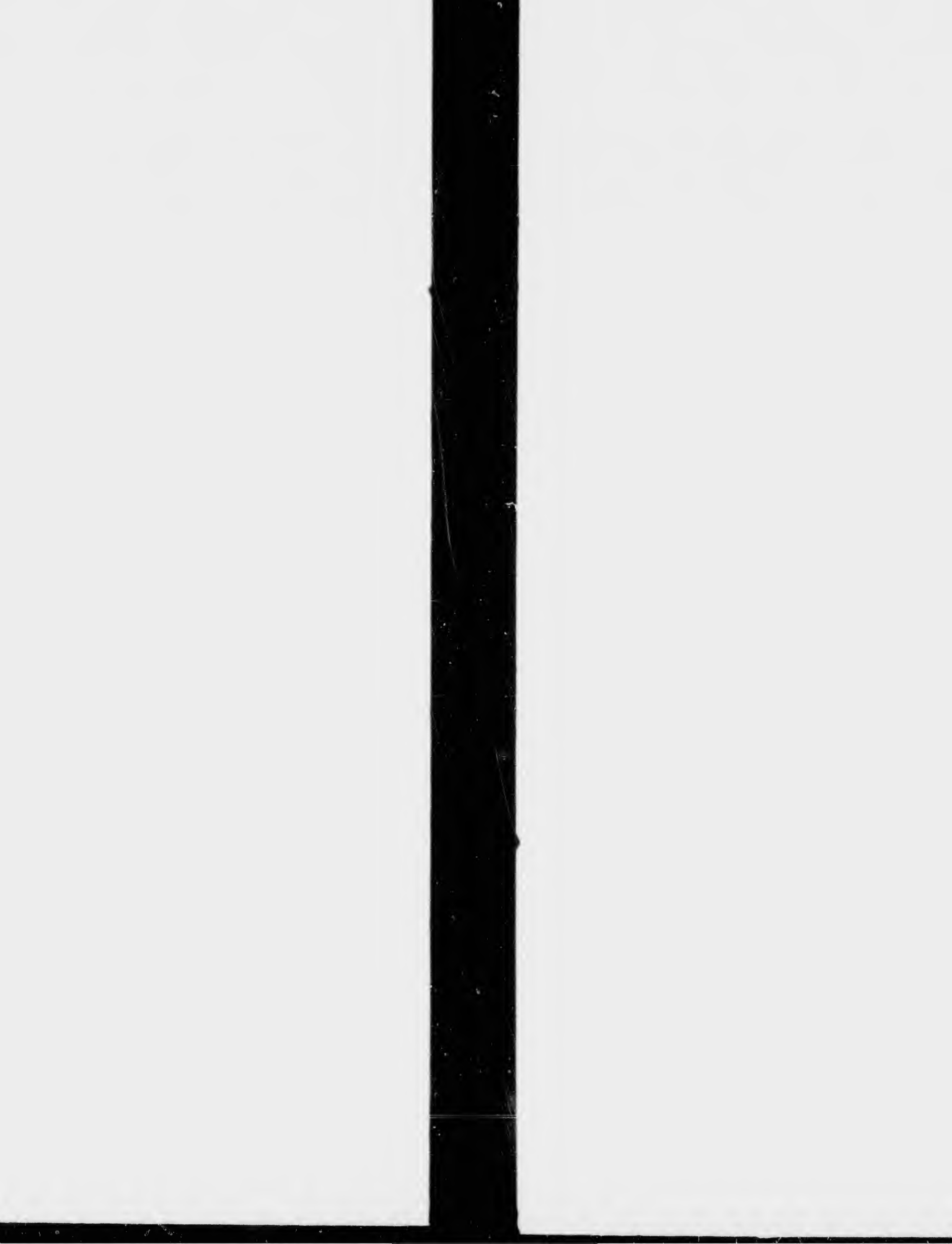
MAIN STREET
N.Y. 14580
872-4503





Historical Microreproductions / Institut canadien de microreproductions historiques

1986



Coloured plates and/or illustrations/
Planches et/ou illustrations en couleur

Quality of print variable/
Qualité inégale de

Bound with other material/
Relié avec d'autres documents

Includes supplementary material/
Comprend du matériel

Tight binding may cause shadows or distortion
along interior margin/
La reliure serrée peut causer de l'ombre ou de la
distorsion le long de la marge intérieure

Only edition available/
Seule édition disponible

Blank leaves added during restoration may
appear within the text. Whenever possible, these
have been omitted from filming/
Il se peut que certaines pages blanches ajoutées
lors d'une restauration apparaissent dans le texte,
mais, lorsque cela était possible, ces pages n'ont
pas été filmées.

Pages wholly or partially obscured by
slips, tissues, etc., have been filmed to
ensure the best possible reproduction.
Les pages totalement ou partiellement
obscurcies par un feuillet, un tissu,
etc., ont été filmées afin d'obtenir la meilleure
reproduction possible.

Additional comments: / CIHM no. 60422
 Commentaires supplémentaires

This item is filmed at the reduction ratio checked below/
Ce document est filmé au taux de réduction indiqué ci-dessous

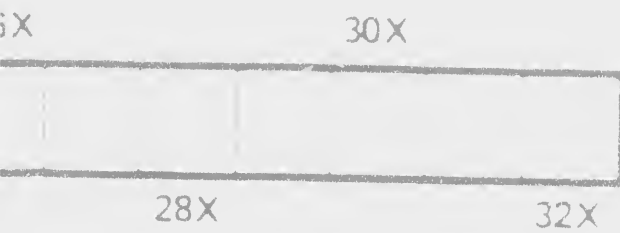
<input type="checkbox"/>	<input type="checkbox"/>	<input type="checkbox"/>	<input type="checkbox"/>	<input type="checkbox"/>	<input type="checkbox"/>	<input type="checkbox"/>	<input type="checkbox"/>	<input type="checkbox"/>	<input type="checkbox"/>	<input type="checkbox"/>	<input type="checkbox"/>	<input type="checkbox"/>	<input type="checkbox"/>	<input type="checkbox"/>
10X		14X		18X		22X		26X						
	12X		16X		20X		24X							

Print varies/
taille de l'impression

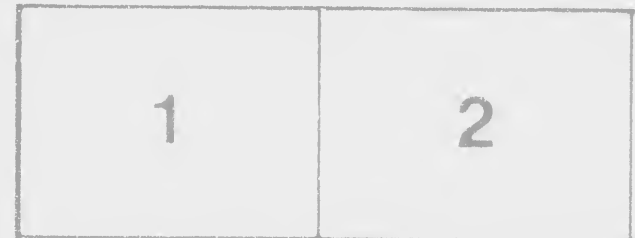
Supplementary material/
matériel supplémentaire

Not available/
non disponible

Partially or partially obscured by errata
, etc., have been refilmed to
best possible image/
partiellement ou partiellement
obscure par un feuillet d'errata, une pelure
a été refilmée à nouveau de façon à
obtenir la meilleure image possible

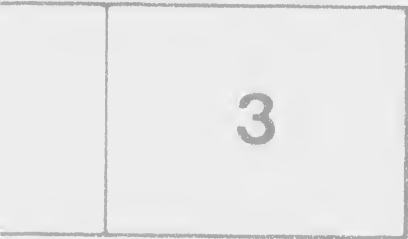


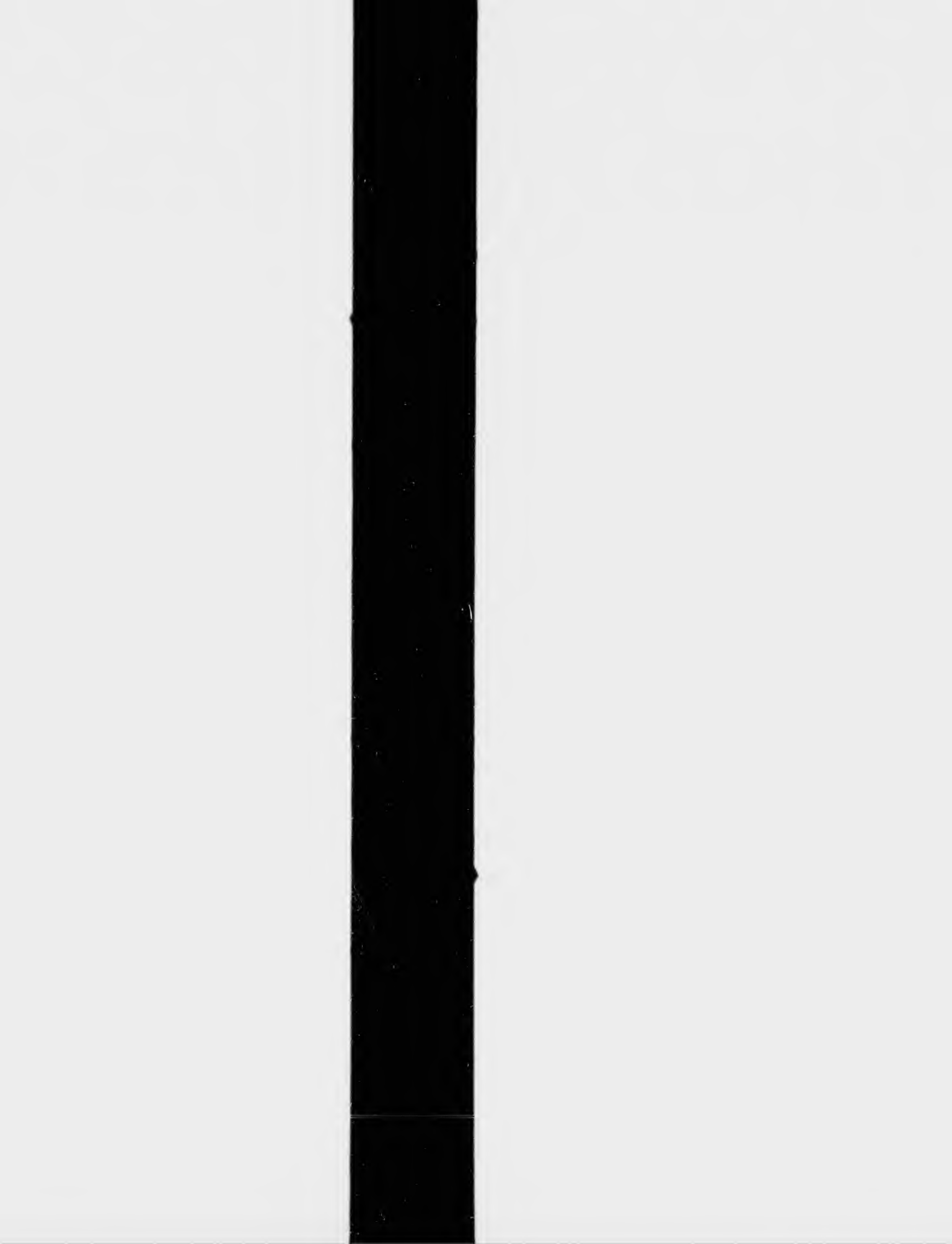
Maps, plates, charts, etc., may be filmed at
different reduction ratios. Those too large
to be entirely included in one exposure are filmed
beginning in the upper left hand corner, left
to right and top to bottom, as many frames as
required. The following diagrams illustrate the
method:



med at
large to be
filmed
er, left to
mes as
strate the

Les cartes, planches, tableaux, etc., peuvent être filmés à des taux de réduction différents. Lorsque le document est trop grand pour être reproduit en un seul cliché, il est filmé à partir de l'angle supérieur gauche, de gauche à droite, et de haut en bas, en prenant le nombre d'images nécessaire. Les diagrammes suivants illustrent la méthode.





only
Com
Mount

Pass
Grand
Quebe

The
Trunk
Hitch
may c
out of

The C
of into

TH

and ot
make

THE

Can be
The
"Course

N. A
one f
For

No

only from Boston.

Connecting with the Cars of the Grand Trunk Railway at Portland for White Mountains, Montreal, and Quebec.

Passengers may stop over at White Mountains, Portland, or any Station on the Grand Trunk Railway, on their return, but not going—may go to Montreal or Quebec first, as they please. Will go by Railroad between Montreal and Quebec.

The White Mountains are only six miles from Gorham Station, on the Grand Trunk Railway. The Alpine House, at Gorham, is a first-class hotel, kept by Mr. Fitchcock, who has made ample accommodations, at reasonable rates, for all who may call upon him. He has carriages running daily to the Tip Top House, summit of Mount Washington, and to all places in the mountain region.

The Citadel, the Plains of Abraham, the Falls of Montmorenci, and other points of interest at Quebec, and

The Mammoth Victoria Bridge,

and other objects of attraction at Montreal, together with the low rates of fare, make this the most desirable excursion of the season.

THE WONDERFUL SCENERY OF THE SAGUENAY RIVER

can be enjoyed for only \$10.00 extra, including meals and state room for the trip.

The steamer Magnit leaves Quebec for the Saguenay on Tuesday, returning on Wednesday—and on Friday, returning on Sunday morning.

N. B. This bill means just what it says, and no favors can be granted at variance from it.

For Tickets and information apply at the Grand Trunk Railway Office,

No. 5 State Street, Boston.

L. MILLIS, Passenger Agent,

