

**CIHM  
Microfiche  
Series  
(Monographs)**

**ICMH  
Collection de  
microfiches  
(monographies)**



**Canadian Institute for Historical Microreproductions / Institut canadien de microreproductions historiques**

**© 1998**

## Technical and Bibliographic Notes / Notes techniques et bibliographiques

The Institute has attempted to obtain the best original copy available for filming. Features of this copy which may be bibliographically unique, which may alter any of the images in the reproduction, or which may significantly change the usual method of filming are checked below.

- Coloured covers / Couverture de couleur
- Covers damaged / Couverture endommagée
- Covers restored and/or laminated / Couverture restaurée et/ou pelliculée
- Cover title missing / Le titre de couverture manque
- Coloured maps / Cartes géographiques en couleur
- Coloured ink (i.e. other than blue or black) / Encre de couleur (i.e. autre que bleue ou noire)
- Coloured plates and/or illustrations / Planches et/ou illustrations en couleur
- Bound with other material / Relié avec d'autres documents
- Only edition available / Seule édition disponible
- Tight binding may cause shadows or distortion along interior margin / La reliure serrée peut causer de l'ombre ou de la distorsion le long de la marge intérieure.
- Blank leaves added during restorations may appear within the text. Whenever possible, these have been omitted from filming / Il se peut que certaines pages blanches ajoutées lors d'une restauration apparaissent dans le texte, mais, lorsque cela était possible, ces pages n'ont pas été filmées.
- Additional comments / Commentaires supplémentaires:

L'Institut a microfilmé le meilleur exemplaire qu'il lui a été possible de se procurer. Les détails de cet exemplaire qui sont peut-être uniques du point de vue bibliographique, qui peuvent modifier une image reproduite, ou qui peuvent exiger une modification dans la méthode normale de filmage sont indiqués ci-dessous.

- Coloured pages / Pages de couleur
- Pages damaged / Pages endommagées
- Pages restored and/or laminated / Pages restaurées et/ou pelliculées
- Pages discoloured, stained or foxed / Pages décolorées, tachetées ou piquées
- Pages detached / Pages détachées
- Showthrough / Transparence
- Quality of print varies / Qualité inégale de l'impression
- Includes supplementary material / Comprend du matériel supplémentaire
- Pages wholly or partially obscured by errata slips, tissues, etc., have been refilmed to ensure the best possible image / Les pages totalement ou partiellement obscurcies par un feuillet d'errata, une pelure, etc., ont été filmées à nouveau de façon à obtenir la meilleure image possible.
- Opposing pages with varying colouration or discolourations are filmed twice to ensure the best possible image / Les pages s'opposant ayant des colorations variables ou des décolorations sont filmées deux fois afin d'obtenir la meilleure image possible.

This item is filmed at the reduction ratio checked below /  
Ce document est filmé au taux de réduction indiqué ci-dessous.

10x		14x		18x		22x		26x		30x
						<input checked="" type="checkbox"/>				
	12x		16x		20x		24x		28x	32x

The copy filmed here has been reproduced thanks to the generosity of:

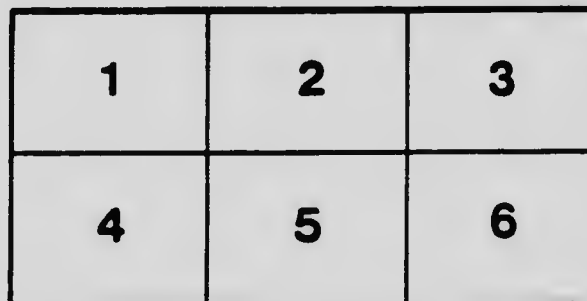
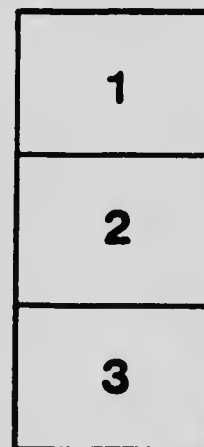
British Columbia Archives and Records Service.

The images appearing here are the best quality possible considering the condition and legibility of the original copy and in keeping with the filming contract specifications.

Original copies in printed paper covers are filmed beginning with the front cover and ending on the last page with a printed or illustrated impression, or the back cover when appropriate. All other original copies are filmed beginning on the first page with a printed or illustrated impression, and ending on the last page with a printed or illustrated impression.

The last recorded frame on each microfiche shall contain the symbol  $\rightarrow$  (meaning "CONTINUED"), or the symbol  $\nabla$  (meaning "END"), whichever applies.

Maps, plates, charts, etc., may be filmed at different reduction ratios. Those too large to be entirely included in one exposure are filmed beginning in the upper left hand corner, left to right and top to bottom, as many frames as required. The following diagrams illustrate the method:



L'exemplaire filmé fut reproduit grâce à la générosité de:

British Columbia Archives and Records Service.

Les images suivantes ont été reproduites avec le plus grand soin, compte tenu de la condition et de la netteté de l'exemplaire filmé, et en conformité avec les conditions du contrat de filmage.

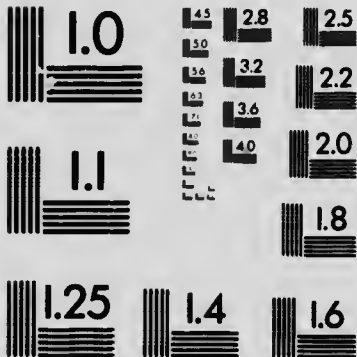
Les exemplaires originaux dont la couverture en papier est imprimée sont filmés en commençant par le premier plat et en terminant soit par la dernière page qui comporte une empreinte d'impression ou d'illustration, soit par le second plat, selon le cas. Tous les autres exemplaires originaux sont filmés en commençant par la première page qui comporte une empreinte d'impression ou d'illustration et en terminant par la dernière page qui comporte une telle empreinte.

Un des symboles suivants apparaîtra sur la dernière image de chaque microfiche, selon le cas: le symbole  $\rightarrow$  signifie "A SUIVRE", le symbole  $\nabla$  signifie "FIN".

Les cartes, planches, tableaux, etc., peuvent être filmés à des taux de réduction différents. Lorsque le document est trop grand pour être reproduit en un seul cliché, il est filmé à partir de l'angle supérieur gauche, de gauche à droite, et de haut en bas, en prenant le nombre d'images nécessaire. Les diagrammes suivants illustrent la méthode.

# MICROCOPY RESOLUTION TEST CHART

(ANSI and ISO TEST CHART No. 2)



**APPLIED IMAGE Inc**

1653 East Main Street  
Rochester, New York 14609 USA  
(716) 482 - 0300 - Phone  
(716) 288 - 5989 - Fax

This was to have been distributed at the Nelson  
meeting but the copies went astray  
J.C.G.

NWp  
016.551  
G-994

*Subject to Revision.*

*Advance copy sent for discussion only.*

Journal Canadian Mining Institute.

Part of Vol. XI.

A PARTIAL BIBLIOGRAPHY OF PUBLICATIONS REFER-  
ING TO THE GEOLOGY AND MINERAL INDUS-  
TRY OF ALBERTA, BRITISH COLUMBIA  
AND THE YUKON.

By J. C. GWILLIM, Kingston, Ont.

The following classification of literature dealing with the exploration, geology and mining of these regions, is not complete. It has been compiled chiefly from three relatively accessible sources, namely, from the reports of the Geological Survey of Canada, and the Provincial Bureau of Mines, and the Canadian Mining Institute transactions.

The inclusion of some purely geological reports of the more remote districts seemed advisable, as offering first aid to those who go into them with the purpose of mining.

The reports of the Geological Survey provide our chief source of information in respect to the economic geology of these areas; and it may be stated that Alberta, British Columbia, and the Yukon, have received a great service from the Canadian Geological Survey, from the days of Richardson and Dawson, to the present summer when eight field parties were working in these provinces. The publications of the Geological Survey are, in most cases, free, and will be sent on application by the Librarian of the Department at Ottawa.

The Annual Reports of the Provincial Mineralogists, contain much statistical information relating to production and progress, together with reports or summaries of the conditions in the respective mining divisions. There are also incorporated in these volumes, special reports upon mineral or coal areas, by the Provincial Mineralogist, the Provincial Assayer, and others competent

to investigate them. The British Columbia reports, and also various bulletins on, and maps of, the mining districts of the Province can be obtained free, or for a small sum, on application to the Provincial Bureau of Mines at Victoria.

The transactions of the Canadian Mining Institute appear to round out our field of information, by giving detailed studies of mines, mining geology, and mining operations. This is a source of information which is likely to increase as the Provinces develop. Volume V is especially valuable in papers relating to operations in British Columbia. It would make this paper cumbersome if one ventured into a description of the material within the titles cited. Attention, however, may be called to those having an asterisk, as affording much detail information concerning the area or areas to which they refer. The work of Dr. G. M. Dawson is always valuable, and his observations cover a large portion of the country here considered.

Concerning the selection of papers and authors in this compilation, I am largely indebted to the Geological Indices of D. B. Dowling and F. J. Nicolas, also to the index of the Canadian Mining Journal, up to Volume VI. Any important omissions may be added. The list is lengthy, but it is a tolerably available one.

The abbreviations used, are:—

G. S. D.—Geological Survey Department, Ottawa.

M. M.—Report of the Minister of Mines, Victoria.

C. M. I.—Journal of the Canadian Mining Institute, Montreal.

#### WESTERN ALBERTA.

CAIRNES, D. D.—Foothills south of the main line of the C.P.R.

G. S. D. Summary, 19 5.

\*DAWSON, G. M.—Preliminary Report upon the Bow and Belly River region with special reference to coal deposits.

G. S. D. 1880-1-2, or No. 167 and Map No. 171.

Report upon the Rocky Mountains between the International Boundary and Lat. 51' 30'. G. S. D. 1886.

DOWLING, D. B.—Coal fields of the Foothills from Old Man River to the Athabasca. G. S. D. Summaries 1903-04-05-06, and maps of Sheep Creek, Cascade and Costigan coal basins.

\* Cascade Coal Basin & maps. no 266. G.S.D. 1907

Stratigraphy of the Cascade Coal basin, Vol. VIII, C. M. I.

- HENRETTA, C. M.—Bankhead Coal Mines, Vol. VIII, C. M. I.
- GWILLIM, J. C.—Notes on the life history of coal seams, Vol. VIII, C. M. I.
- \*LEACH, W. W.—The Blairmore-Frank coal fields with map. G. S. D. Summary 1902.
- \*McEVOY, JAS.—The Yellowhead Pass Route with map, from Edmonton to Tete Jaune Cache. G. S. D. Summary 1898, or No. 703 separate.
- STOCKETT LEWIS AND WARDEN, B. R.—The Anthracite Breaker of the Pacific Coal Co'y, at Bankhead, with plans. Vol. IX, C. M. I.
- SMITH, F. B.—Coal Mining in the North-West, and its probable future. Vol. V, C. M. I.
- WHITESIDE, O. E. S.—Across the Pitch versus up the Pitch. Vols. II and IV, C. M. I.

EAST KOOTENAY.

- BLAKEMORE, WM.—Pioneer work in the Crow's Nest Areas. Vol. IV, C. M. I.
- Future of the coal and coke supply of B. C. Vol. VI, C. M. I.
- Iron deposits near Kitchener. Vol. V, C. M. I.
- Bull River iron deposits. M. M. 1900.
- LYLE, W. A.—Report on E. Kootenay. M. M. 1896.
- BLESS, C. V.—The coal creek colliery of the Crow's Nest Coal Co'y. Vol. IV, C. M. I.
- Notes on the geology and a few ore deposits of South Eastern B. C. Vol. V, C. M. I.
- DALY, DR. R. A.—Geology of the International Boundary. G. S. D. Summary 1904.
- \*DAWSON, DR. G. M.—Report and Map upon the Rocky Mountains. G. S. D. 1886.
- DOWLING, D. B.—Northern extension of Elk River coal fields. G. S. D. Summary 1905.
- LEACH, W. W.—Crow's Nest and Elk River coal fields. G. S. D. Summary, 1901.
- McEVOY, JAMES—East Kootenay map sheet. G. S. D. Summary, 1899.

- Crow's Nest coal field and map. G. S. D. Summary 1900.  
Notes on the special features of coal mining in the Crow's  
Nest Pass. Vol. VII, C. M. I.
- ROBERTSON, W. F.—Report on East Kootenay. M. M. 1898.  
Reports including observations of McEvoy, Selwyn and  
Leckie and Baker, M. M. 1901; Bulletin and map of Flat-  
head oil fields.  
Reports on Windermere and Fort Steele. M. M. 1903.  
Report on the Fernie Coal Mines Explosion (separate), 1902.
- SELWYN, A. R. C.—Oil fields of South Western Alberta and  
South Eastern B. C. G. S. D. Summary 1891.

#### WEST KOOTENAY.

- BROCK, R. W.—Reports on West Kootenay. G. S. D. Sum-  
maries 1898-99-1900.  
Geological Map of West Kootenay. G. S. D. No. 792.  
Report and sketch map on Lardeau district. G. S. D.  
Summary 1903-04.  
Report (Preliminary) upon Rossland. G. S. D. No. 939.  
Report upon Rossland. G. S. D. Summary 1906.  
Poplar Creek and other Camps. Vol. VII, C. M. I.  
West Kootenay ore bodies. Vol. 2, C. M. I.  
West Kootenay Notes. Vol. 3, C. M. I.
- CARLYLE, W. A.—Bulletin No. 2, Trail Creek. M. M. 1896.  
Bulletin No. 3, Slocan, Ainsworth and Nelson Mining  
divisions. M. M., 1896.
- CAMPBELL, C. M.—Mining in Rossland District. Vol. V, C.M.I.
- CAMPBELL-JOHNSON, R. C.—Dry ores of the Slocan. Vol. V,  
C. M. I.
- COLE, L. HEBER.—Mine Surveying as carried on at the Centre  
Star Mine, Rossland. Vol. VIII, C. M. I.
- DAWSON, G. M.—Report on West Kootenay with map No. 303.  
G. S. D. No. 294.
- FELL, E. NELSON—Notes to accompany sections of the Atha-  
basca Mine. Vol. V, C. M. I.  
Gold milling practice at the Athabasca Mine, Nelson. Vol.  
V, C. M. I.
- FOWLER, S. S.—Notes on the Ymir mine and its mill practice.  
Vol. III, C. M. I.



- Coarse concentration in the Slocan district. Vol. VI, C. M. I.
- GARDE, A. C.—Notes on the B. C. Zinc Problem. Vol. VII, C. M. I.
- GWILLIM, J. C.—West Kootenay ore bodies. Vol. III, Fed. C. M. I.
- \*INGALLS, W. R.—Zinc Resources of B. C. Dep't of Mines, Ottawa.
- INGALL, E. D.—Silver mines of the West Kootenay. Journal Mining Society of Nova Scotia, Vol. III.
- HARDMAN, J. E.—Notes on some mining districts in B. C. Vol. II, C. M. I.
- HALL, OLIVER—The LeRoi Mine. Vol. V, C. M. I.
- HEDLEY, R. R.—The possibilities for smelting in B. C. Fed. C. M. I., Vol. III.
- KIRBY, E. B.—Ore deposits of Rossland. Vol. VII, C. M. I.
- McCONNELL, R. G.—On West Kootenay in G. S. D. Summaries 1894-95-96-97.
- McDONALD, BERNARD—Hoisting and Haulage (a description of LeRoi plant). Vol. V, C. M. I.
- Mining possibilities of the Canadian Rockies. Vol. VI, C. M. I.
- Mine signalling by Compressed Air. Vol. VI, C. M. I.
- Mine timbering by Squaire Sett system at Rossland. Vol. VI, C. M. I.
- PARLEE, NORMAN W.—Rock drilling and blasting. Vol. VI, C. M. I.
- ROBERTSON, W. F.—Report on Nelson district. M. M. 1900.
- Lardeau, Fish Creek, Poplar Creek, &c. M. M. 1903.
- Ainsworth, Slocan, and Slocan City Divisions. M. M. 1904.
- THOMPSON, WM.—Comparison of costs of compressing air with steam and electricity at Rossland. Vol. VI, C. M. I.

#### BOUNDARY AND SIMILKAMEEN.

- BAUERMAN, H.—Report upon the Geology of the Boundary line west of the Rocky Mountains; also geological cross-section. G. S. D. 1882-3-4.
- BROCK, R. W.—Reports G. S. D. Summaries 1901-02, also geological map No. 823.

- . Ore deposits of the Boundary Creek district. Vol. V, C.M.I.  
 Geology of the Franklin district, Vol. X, C. M. I.
- CAMSELL, CHARLES—Similkameen district. G. S. D. Summary, 1906.
- CARLYLE, W. A.—Report on Yale district. M. M. 1897.
- DALY, R. A.—Geology of Boundary Line. G. S. D. Summary 1903.
- DAWSON, G. M.—Preliminary report upon the Physical and Geological features of the Southern Interior of B. C. G.S.D. 1877-78, also maps No. 127 and No. 363.
- KEFFER, FREDERIC—A method of mining low grade ores in the Boundary district. Vol. V, C. M. I.  
 Mining and Smelting in the Boundary. Vol. VII, C. M. I.  
 Notes on diamond drilling in the Boundary. Vol. IX, C. M. I.  
 The Emma Mine. Vol. X, C. M. I.
- LEDOUX, A. R.—Production of Copper in the Boundary district. Vol. V, C. M. I.
- DE PENCIER, H. P.—Mine timbering in Knob Hill and Old Ironsides. Vol. V, C. M. I.
- ROBERTSON, W. F.—Boundary Creek, &c., &c. M. M. 1900.  
 Vernon, Kettle River, Osoyoos and Similkameen Divisions. M. M., 1901.
- SCOTT, O. N.—Ore deposits of Copper Mountain, Similkameen district. Vol. V, C. M. I.
- WICKWARE, F. G.—The B. C. copper mine and smelter. Vol. IX, C. M. I.

#### VANCOUVER ISLAND AND COAST.

- BEST, W. F.—Notes on the economic minerals of Vancouver Island: Vol. V, C. M. I.
- BREWER, W. M.—West Coast, Vancouver Island. M. M. 1899.  
 Mineral resources of Vancouver Island. Vol. VI, C. M. I.  
 Bornite ores of B. C. and Yukon. Vol. VIII, C. M. I.  
 Copper ore on Vancouver Island. Vol. IX, C. M. I.  
 Further observations on &c. Vol. X, C. M. I.
- CARLYLE, W. A.—Nanaimo district, B. C. M. M. 1900.

- CARMICHAEL, HERBERT**—Report, map, and reference list of claims, Southern Vancouver Island. M. M. 1899.  
 Nanaimo division, Queen Charlotte Islands and Skeena River division. M. M. 1901.  
 Quatsino Sound. M. M. 1903.  
 Mount Baker mines. M. M. 1904.  
 West Coast of Vancouver Island, Great Central Mine, etc. (bulletin). M. M. 1906.
- DALY, R. A.**—International Boundary, Mount Baker, etc. G.S.D. Summary's 1901-1902.
- \***DAWSON, G. M.**—North Vancouver Island and adjacent coast with map. G. S. D. No. 235.
- ELLS, R. W.**—Preliminary report on Graham Island. G. S. D. Summary 1905, and No. 743.
- HAYCOCK, ERNEST, AND WEBSTER, ARTHUR**—West coast of Vancouver Island. G. S. D. Summary 1902.
- \***KIRSOPP, JOHN, JR.**—The coal fields of Cook Inlet, Alaska and the Pacific Coast. Vol. XXI, Trans. Mining Engineers.
- LE ROY, O. E.**—B. C. Coast, Texada Island, etc. G. S. D. Summary 1906.  
 Marble Bay mine. Vol. X, C. M. I.
- MARSHALL, DR. T. R.**—Coal and iron deposits of Graham Island with sketch map. M. M. 1902.
- MONCTON, G. F.**—Notes on mining on the coast of B. C. and the adjacent islands. Vol. III, Fed. C. M. I.
- POOLE, H. S.**—The Nanaimo Comox coal field. G. S. D. Summary, 1905, also M. M. 1903
- \***RICHARDSON, JAMES**—Coal measures, east coast, Vancouver Island. G. S. D. Vol's, 1871-72, 72-73, 76-77.
- ROBERTSON, W. F.**—Victoria and Nanaimo districts. M. M. 1899.  
 Mount Sicker camp. M. M. 1902.  
 Iron ores of Coast and Vancouver Island (bulletin). M. M. 1902.  
 Britannia mine; Sooke copper mines, and Vancouver Portland Cement Company. M. M. 1.04.
- WRIGHT, FRED EUGENE**—Unuck River mining region of B. C. M. M. 1906.

## KAMLOOPS, NICOLA, LILLOOET.

- COLQUHOUN, A. J.—Notes on the occurrence of quicksilver in Canada. Vol. II, C. M. I.
- CIRKEL, FRITZ—Bridge River Gold mining camp. Vol. III, C. M. I.
- DAWSON, G. M.—On Kamloops district. G. S. D. Summary 1894.  
\*Kamloops map sheet. Separate Report.  
G. S. D. No. 573, with Economic and Geological Maps.
- ELLS, DR. R. W.—On the Nicola coal fields. G. S. D. Summary 1904. (Also Johnson R. A. A. on Aspen Grove and Aberdeen).
- MONCTON, G. F.—Gold bearing lodes of Cayoosh Creek. Jour. Fed. M. I., Vol. II.
- SATCHELL-CLARKE, F.—A few notes on Gold Dredging on Thompson and Fraser Rivers, &c. Vol. V, C. M. I.
- SELWYN, A. R. C., DR.—On the route from Kamloops to Yellowhead Pass. G. S. D. 1871-72.

## CARIBOO-STUART LAKE AND SKEENA RIVER.

- BOWMAN, AMOS—Report upon Cariboo with maps of the creeks. G. S. D. 1887-88 or No. 263.
- \*DAWSON, G. M.—Exploration of Blackwater, Nechaco, Stuart Lake, Quesnelle and Cariboo, also map. G. S. D. 1876-77. Expedition from Port Simpson to Edmonton via Peace River. G. S. D. 1879-80.  
Hydraulic Mining in B. C. Jour. General Mining Association of Quebec. Vol. II.
- DICK, W. J.—Hydraulic Mining in Cariboo. Vol. X, C. M. I.
- CARLYLE, W. A.—Cariboo district of B. C. M. M. 1897. (Special Report.)
- CARMICHAEL, HERBERT—Mineral locations, Portland Canal district. M. M. 1906 (bulletin.)
- HOBSON, J. B.—Auriferous gravels of B. C. Vol. II, G. M. A., Quebec.
- LEACH, W. W.—The Telkwa mining district. G. S. D. Summary 1906, also M. M. 1906.

Some notes on the Economic Geology of the Skeena River.  
Vol. X, C. M. I.

McEVOY, JAMES—Hydraulic Mining in B. C.

Journal G. M. A., Quebec, Vol. I.

MERRITT, W. H.—Gold bearing reefs and placers of Northern  
B. C. Vol. III, Fed. C. M. I.

ROBERTSON, W. F.—Report upon Cariboo district. M. M.  
1902. (Special Report.)

Northern Interior Plateau between Fraser and Skeena  
Rivers. M. M. 1905. (Special Report).

#### OMENICA AND PEACE RIVER.

DAWSON, G. M.—From Port Simpson to Peace River and Ed-  
monton. G. S. D. 1879-80.

\*McCONNELL, R. G.—Omenica district with map. G. S. D.  
No. 574, also Summary 1894, and M. M. 1897.

MUSGRAVE, E. C.—A prospecting trip in Northern Omenica.  
Vol. III, C. M. I.

ROBERTSON, W. F.—Essington to Edmonton, also fine photo-  
graphs. M. M. 1906. (Special Report).

SELWYN, A. R. C., DR.—Exploration of Peace River. G. S. D.  
1875-76.

VALLEAU, COMMISSIONER F. W.—A special report upon  
Omenica district. M. M. 1901.

#### CASSIAR AND YUKON.

BREWER, W. M.—Bornite ores of B. C. and the Yukon. Vol.  
VIII, C. M. I.

Further observations on the copper deposits of B. C.

The Yukon, and Alaskan Coast. Vol. X, C. M. I.

\*DAWSON, G. M.—Exploration of the Yukon and portions of  
Northern B. C., with maps. G. S. D. 1887-88, or No. 260.

CAIRNES, D. D.—White Horse and Yukon (Windy Arm dis-  
coveries). G. S. D. 1906.

Notes on recent developments in Quartz mining in the  
Yukon. Vol. X, C. M. I.

CARLYLE, W. A.—Cassiar district of B. C. M. M. 1897.

- CAMSELL, CHAS.—Peel River in the Yukon and McKenzie districts. G. S. D. Summary 1905.
- CARMICHAEL, HERBERT—Mineral Locations on Portland Canal. Bulletin No. 2. M. M. 1906.
- GWILLIM, J. C.—Report on the Atlin District. G. S. D. Summaries 1899–1900.  
 \*Separate report on Atlin with map. No. 743, also in Vol. XII, 1899, G. S. D.  
 Notes on the Atlin District. Vol. III, C. M. I.  
 Characteristics of the Atlin Gold Fields. Vol. V, C. M. I.
- KEELE, JAS.—Duncan Creek Mining district, Yukon, also sketch map. G. S. D. Summary 1904.  
 Stewart River District. G. S. D. Summary 1905.
- McCONNELL, R. G.—Liard River. G. S. D. 1889, also resume in M. M. 1897.  
 Klondike District. G. S. D. Summaries 1898–99–1900.  
 Yukon District, 1901–02–03–04–05–06. Summaries G. S. D. Preliminary Report on the Klondike Gold Fields. No. 687, with map No. 688. G. S. D. Summary 1900.  
 McMillan River with map. G. S. D. Summary 1902.  
 Kluane Mining District with sketch map. 1904.  
 White River and Windy Arm districts, 1905.  
 Old Valley gravels of the Yukon. Vol. III, C. M. I.  
 Note on the Windy Arm silver bearing veins. Vol. IX, C. M. I.  
 \* Report on Klondike. Vol. XIV, G. S. D. 1901.
- OGILVIE, W. M.—Gold mining in the Yukon. Vol. I, Fed. C. M. I.
- ROBINSON, A. W.—Stewart River Gold Dredge. Vol. VI, C. M. I.
- ROBERTSON, W. F.—Atlin and Bennett division M. M. 1900.  
 Notes on Windy Arm Mineral Locations. M. M. 1905.
- WRIGHT, F. EUGENE—Unuk River Portland Canal. G. S. D. Summary 1905. Also in M. M. 1906.

*Gold values of the Klondike high level  
 gravels. No 979. G. S. D. 1907*

BRITISH COLUMBIA (GENERAL).

- BRITISH COLUMBIA REPORT OF MINISTER OF MINES—  
Containing statistics, annual reports from the mining divisions and special reports on various districts by the Provincial Mineralogist, the Provincial Assayer, and others. W. F. Robertson, Provincial Mineralogist.
- BRITISH COLUMBIA YEAR BOOK—Containing a resume of mining operations and reports of mining districts. R. E. Gosnell, Victoria.
- BRITISH COLUMBIA MINING RECORD—A Monthly Journal, chiefly devoted to B. C. Mining. E. Jacobs, Editor and Manager, Victoria.
- CANADIAN GEOLOGICAL SURVEY SUMMARY REPORT—  
Usually containing six or seven reports upon Western Geology and Mining.
- CAIRNES, D. D.—Prospecting in Western Canada. Vol. VIII, C. M. I.
- LORING, F. C.—Mining Law and its bearing on the development of Mines and Mineral Districts. Jour. Fed. C. M. I. Vol. III.
- MCDONALD, BERNARD—Mining possibilities of the Canadian Rockies. Vol. VI, C. M. I.
- MERRITT, MAJOR W. H.—The occurrence of free milling gold veins in B. C. Vol. II, C. M. I.
- GOSNELL, R. E.—Mining in British Columbia. Bulletin No. 19. Bureau of Provincial Information, Victoria.
-

