

**CIHM
Microfiche
Series
(Monographs)**

**ICMH
Collection de
microfiches
(monographies)**



Canadian Institute for Historical Microreproductions / Institut canadien de microreproductions historiques

© 1998

Technical and Bibliographic Notes / Notes techniques et bibliographiques

The Institute has attempted to obtain the best original copy available for filming. Features of this copy which may be bibliographically unique, which may alter any of the images in the reproduction, or which may significantly change the usual method of filming are checked below.

- Coloured covers / Couverture de couleur
- Covers damaged / Couverture endommagée
- Covers restored and/or laminated / Couverture restaurée et/ou pelliculée
- Cover title missing / Le titre de couverture manque
- Coloured maps / Cartes géographiques en couleur
- Coloured ink (i.e. other than blue or black) / Encre de couleur (i.e. autre que bleue ou noire)
- Coloured plates and/or illustrations / Planches et/ou illustrations en couleur
- Bound with other material / Relié avec d'autres documents
- Only edition available / Seule édition disponible
- Tight binding may cause shadows or distortion along interior margin / La reliure serrée peut causer de l'ombre ou de la distorsion le long de la marge intérieure.
- Blank leaves added during restorations may appear within the text. Whenever possible, these have been omitted from filming / Il se peut que certaines pages blanches ajoutées lors d'une restauration apparaissent dans le texte, mais, lorsque cela était possible, ces pages n'ont pas été filmées.
- Additional comments / Commentaires supplémentaires:

L'Institut a microfilmé le meilleur exemplaire qu'il lui a été possible de se procurer. Les détails de cet exemplaire qui sont peut-être uniques du point de vue bibliographique, qui peuvent modifier une image reproduite, ou qui peuvent exiger une modification dans la méthode normale de filmage sont indiqués ci-dessous.

- Coloured pages / Pages de couleur
- Pages damaged / Pages endommagées
- Pages restored and/or laminated / Pages restaurées et/ou pelliculées
- Pages discoloured, stained or foxed / Pages décolorées, tachetées ou piquées
- Pages detached / Pages détachées
- Showthrough / Transparence
- Quality of print varies / Qualité inégale de l'impression
- Includes supplementary material / Comprend du matériel supplémentaire
- Pages wholly or partially obscured by errata slips, tissues, etc., have been refilmed to ensure the best possible image / Les pages totalement ou partiellement obscurcies par un feuillet d'errata, une pelure, etc., ont été filmées à nouveau de façon à obtenir la meilleure image possible.
- Opposing pages with varying colouration or discolourations are filmed twice to ensure the best possible image / Les pages s'opposant ayant des colorations variables ou des décolorations sont filmées deux fois afin d'obtenir la meilleure image possible.

This item is filmed at the reduction ratio checked below /
Ce document est filmé au taux de réduction indiqué ci-dessous.

	10x		14x		18x		22x		26x		30x	
	12x		16x		20x		24x		28x		32x	

(Note: The 20x reduction ratio is checked in the original image.)

The copy filmed here has been reproduced thanks to the generosity of:

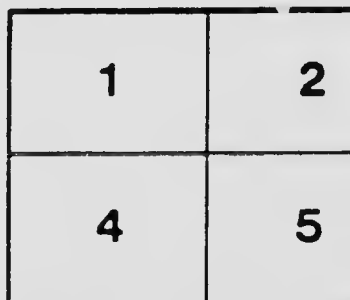
British Columbia Archives and Records Service.

The images appearing here are the best quality possible considering the condition and legibility of the original copy and in keeping with the filming contract specifications.

Original copies in printed paper covers are filmed beginning with the front cover and ending on the last page with a printed or illustrated impression, or the back cover when appropriate. All other original copies are filmed beginning on the first page with a printed or illustrated impression, and ending on the last page with a printed or illustrated impression.

The last recorded frame on each microfiche shall contain the symbol \rightarrow (meaning "CONTINUED"), or the symbol ∇ (meaning "END"), whichever applies.

Maps, plates, charts, etc., may be filmed at different reduction ratios. Those too large to be entirely included in one exposure are filmed beginning in the upper left hand corner, left to right and top to bottom, as many frames as required. The following diagrams illustrate the method:



L'exemplaire filmé fut reproduit grâce à la générosité de:

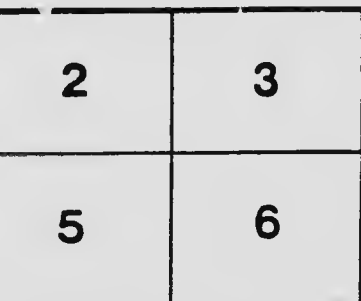
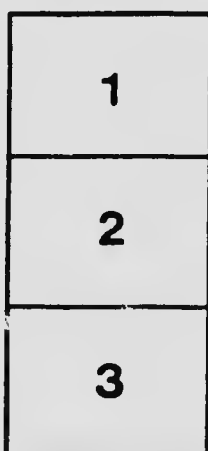
British Columbia Archives and Records Service.

Les images suivantes ont été reproduites avec le plus grand soin, compte tenu de la condition et de la netteté de l'exemplaire filmé, et en conformité avec les conditions du contrat de filmage.

Les exemplaires originaux dont la couverture en papier est imprimée sont filmés en commençant par le premier plat et en terminant soit par la dernière page qui comporte une empreinte d'impression ou d'illustration, soit par le second plat, selon le cas. Tous les autres exemplaires originaux sont filmés en commençant par la première page qui comporte une empreinte d'impression ou d'illustration et en terminant par la dernière page qui comporte une telle empreinte.

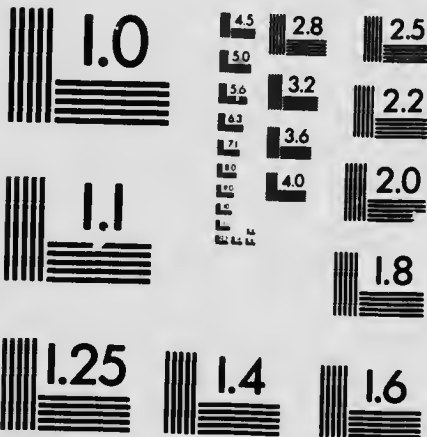
Un des symboles suivants apparaîtra sur la dernière image de chaque microfiche, selon le cas: le symbole \rightarrow signifie "A SUIVRE", le symbole ∇ signifie "FIN".

Les cartes, planches, tableaux, etc., peuvent être filmés à des taux de réduction différents. Lorsque le document est trop grand pour être reproduit en un seul cliché, il est filmé à partir de l'angle supérieur gauche, de gauche à droite, et de haut en bas, en prenant le nombre d'images nécessaire. Les diagrammes suivants illustrent la méthode.



MICROCOPY RESOLUTION TEST CHART

(ANSI and ISO TEST CHART No. 2)



APPLIED IMAGE Inc

1653 East Main Street
Rochester, New York 14609 USA
(716) 482 - 0300 - Phone
(716) 288 - 5639 - Fax

NWP
971.1v1
T727g

GUIDE

TO

VICTORIA, BRITISH COLUMBIA, CANADA



TROUT & SALMON.
GROUSE, QUAIL & PHEASANT.
DEER, ELK & BEAR.

THE
HOLIDAY-SEEKERS'
PARADISE

Compliments of
THE TOURIST ASSOCIATION
of VICTORIA, B.C.

PROVINCIAL ARCHIVES OF B.C.

INFORMATION FOR STRANGERS

This guide to the city and its environs is presented by the Tourist Association of Victoria in the hope that it will aid the visitor in "making his way about," and seeing some of the many places and things that are worth seeing.

Any information not found in the guide will be cheerfully furnished on application at the Association's Rooms, No. 34 Fort Street, where a free Information Bureau is maintained.

You are cordially invited to call at the Association's Rooms, No. 34 Fort Street, where ladies and gentlemen will find many conveniences provided for their use.

Very often a person arriving in a new city is at a loss regarding the points of the compass; so it may be explained that the general layout of the shore line of Victoria Harbor is north and south. Government and parallel streets run north and south; Yates, Fort, Johnson, etc., run east and west. The Parliament Buildings stand at the south end of the harbor, facing north.

CAR SERVICE

The central point at which to take street cars is the junction of Government and Yates streets.

Cars for Victoria West and Esquimalt leave there every 15 minutes from 6 a. m. until 11:30 p. m. week days, and from 9 a. m. to 10:30 p. m. Sundays.

CAR SERVICE (Continued)

Fort Street cars, which run to the Royal Jubilee Hospital and Oak Bay, run every 15 minutes from 6 a. m. to 11:15 p. m. week days, and 9 a. m. to 10:30 p. m. Sundays. If going to Oak Bay, ask for transfer.

Beacon Hill and Spring Ridge cars (take south-bound car for Beacon Hill Park) leave every 20 minutes from 6:15 a. m. until 11:35 p. m.; Sundays from 9:15 a. m. until 10:15 p. m. Beacon Hill (south-bound) cars pass Parliament Buildings; north-bound cars run to Gorge Road and Burnside Road.

Outer Wharf and Douglas Street cars run every 20 minutes from 6:05 a. m. until 11:25 p. m.; Sundays, 9:05 a. m. until 10:30 p. m. Outer Wharf (south-bound) cars pass Parliament Buildings. North-bound cars run to Spring Ridge. From the Outer Wharf one may walk along the sea-coast to Beacon Hill Park, a delightful promenade and admirably suited to bicycling.

WHAT TO SEE

THE PROVINCIAL PARLIAMENT BUILDINGS

the finest in Canada. Contain four distinct museums, viz., Natural History, Mineralogical, Agricultural and Historical; a fine library and reading room and a historical picture gallery. The view from the dome is one to be remembered; do not fail to see it. On the lawn in front stands a monument to Sir James Douglas, first governor of British Columbia. An heroic figure of Vancouver surmounts the dome. Immediately west of the Parliament Buildings is the Drill Hall and armories of the Fifth Regiment, Royal Canadian Artillery.

Leaving the Parliament Buildings, five minutes' walk, via Birdcage Walk and Superior Street East brings one to

BEACON HILL PARK

acknowledged to be one of the finest natural pleasure grounds in North America. It contains about 300 acres of woodland, uplands and meadow, diversified by shade, walks and drives, artificial lakes and parterres of flowers. There is an interesting collection of native birds and animals, a bear-pit and a deer park. Beacon Hill, where the tall flagstaff stands, commands a magnificent view of the Straits of San Juan de Fuca, the Olympian Mountains, Mount Baker, Race Rocks, Clover Point, where Vancouver first landed, and other striking objects of natural beauty.

VICTORIA ARM

Is an extension of Victoria Harbor, about four miles in length. To thoroughly enjoy its beauties one should take a rowboat, naphtha or steam launch, and make a leisurely trip to its extreme northern end, where the old buildings of the Hudson's Bay Company's trading post are still standing.

THE GORGE

About midway of its length Victoria Arm narrows to a gorge, through which the tide-waters rush at certain stages with torrent-like velocity, forming a reversible fall. Strangers are warned not to attempt the passage of the Gorge in small boats, when the water is at all rough. The safe way is to land and guide the boat up or down the rapid.

ESQUIMALT

Street cars run to Esquimalt, which is the station for the British North Pacific Squadron. One may also go by carriage, a pleasant drive of four miles through Victoria West. The points of interest at Esquimalt are the British warships, the navy yard, Imperial dock yard, and the beautiful scenery of Esquimalt Harbor and the Royal Roads. On the road one passes the Work Point Barracks, where the Imperial troops are quartered. Rowboats and launches may be engaged at Esquimalt by which to visit the warships. There are extensive fortifications near Esquimalt, but these are not open to visitors.

OAK BAY

with its grand sweep of shore line, broken by rugged promontories, and a magnificent view seaward, is a delightful place at which to spend an afternoon. Rowboats may be hired at Oak Bay. The golf links are a few minutes' walk from the street car terminals. Take Fort Street cars for Oak Bay.

ROYAL JUBILEE HOSPITAL

This fine institution, built by the people of Victoria to commemorate the sixtieth jubilee of Her Majesty Queen Victoria, is beautifully situated on Cadboro Bay Road, and may be reached by the Fort Street cars.

ST. JOSEPH'S HOSPITAL

is another well-equipped establishment for the sick, conducted by the Sisters of St. Ann. It is situated on Humboldt Street, a few minutes' walk from Government Street via Belleville Street East.

OLD GOVERNMENT HOUSE

On Belleville Street, facing James Bay (which is now in course of reclamation) stands the residence of Sir James Douglas, the first governor of British Columbia, one of the few landmarks remaining of the old colonial days.

BEAUTY EVERYWHERE

One of the chief charms of Victoria is the fact that it possesses no "West End," in the common acceptation of the term. Stately mansions and beautiful houses are seen in the most unexpected places, so that one must travel the city from centre to circumference in every direction to appreciate its wealth of attractions.

CHINATOWN

The Chinese quarter of Victoria, east of Government Street, between Cormorant and Fisgard Streets, with its joss-house, theatre and queer-looking stores filled with all kinds of Oriental goods, should be seen by every visitor.

DRIVING AND CYCLING

Dallas Road and its continuation, Ocean Avenue, skirting the sea-coast for four miles, forms one of the most beautiful drives imaginable by carriage or wheel. The route would be Government Street south, Belleville Street, Dallas Road, Ocean Avenue to Oak Bay, thence by Oak Bay Avenue and Fort Street to Government Street. This drive takes one past Ross Bay Cemetery. Other drives are: Douglas Street, Gorge Road and Craigflower Road; Cedar Hill and Mount Tolmie; Victoria West and Esquimalt; Cadboro Bay; Cordova Bay; Hutley Park and William Head; Metchosin; Goldstream; Royal Oak, Saanich and Sidney.

BOATING

There are boat-houses along the water front and at Esquimalt and Oak Bay, where rowing, sail-boats and launches may be hired by the day or hour at reasonable rates.

FISHING

Fly-fishing and trolling may be enjoyed in the upper harbor and in the Straits along the Dallas Road, and off Macanlay Point and Esquimalt. Full information regarding fishing will be furnished at the Tourist Association Bureau, 34 Fort Street.

EXCURSIONS

The Esquimalt & Nanaimo Railway runs regular and excursion trains to Goldstream, Shawnigan Lake, Duncans, Ladysmith, Nanaimo and intermediate points. The Company also runs steamers from Victoria to Nanaimo and Comox, touching at intermediate points.

The Victoria & Sidney Railway runs to Saanich and Sidney, connecting at the latter with steamer to Islands and Mainland points as far as Nanaimo.

Both these companies afford delightful trips through most picturesque and interesting scenes.

GENERAL INFO

Banks — Canadian Bank
ment Street; Bank of Montreal
Royal Bank of Canada, Gov
of British North America,
Bank, Government Street.

Bureau of Information —

Board of Trade — Bastion

City Hall — Douglas Street

Court House — Bastion Street

Churches — Christ Church
of England); St. Andrew
St. Andrew's Presbyterian
Metropolitan Methodist;
of England); St. Barnabas
land); Church of Our Lord
pal); Congregational; Calvinist
Baptist.

Hospitals — Royal Jubilee
Naval.

Post Office and Customs
Street.

Express Offices — Dominion
Streets; Great Northern,
Northern Pacific, 104½ Gov

Fraternal Societies — A.
Street, near Blanchard; Odd
Street; Knights of Pythias
A. F. & A. M. Hall, Douglas
Street; Trades and Labor
son Streets.

Social Clubs — Union, Ba

Athletic — James Bay At
toria Athletic Association;
ciation; Victoria West Athl

L INFORMATION

n Bank of Commerce, Govern-
of Montreal, Government Street;
ada, Government Street; Bank
America, Yates Street; Molsons
Street.

mation — 34 Fort Street.

— Bastion Street

gias Street.

Bastion Street.

st Church Cathedral (Church
Andrew's (Roman Catholic);
sbyterian; First Presbyterian;
odist; St. James' (Church
Barnabas (Church of Eng-
Our Lord (Reformed Episco-
al; Calvary Baptist; Emmanuel

l Jubilee, St. Joseph's, Marine.

Customs House, Government

— Dominion, Fort and Broad
orthern, 75 Government Street;
04½ Government Street.

es — A. O. U. W. Hall, Yates
ard; Odd Fellows' Hall, Douglas
f Pythias Hall, Broad Street;
Douglas Street, corner Fisguard
Labor Hall, Douglas and John-

nion, Badminton, Pacific.

Bay Athletic Association; Vic-
iation; Fernwood Athletic Asso-
West Athletic Association.

HISTORICAL

1592 — Juan de Fuca discovered the straits be-
tween Vancouver Island and the Mainland.

1774 — Juan Perez anchored in Nootka Sound,
west coast of Vancouver Island.

1778 — Captain James Cook visited Nootka
Sound.

1792 — Captain George Vancouver circumnavi-
gated Vancouver Island.

1842 — Fort Mosun established by the Hud-
son's Bay Company. The name was changed to
Fort Albert, and finally to Victoria.

1849 — Vancouver Island proclaimed a British
colony, with Richard Blanshard as governor.

1856 — First Legislature of Vancouver Island
met at Victoria, August 12.

1858 — Vancouver Island and British Columbia
amalgamated as one colony.

1871 — British Columbia admitted as a province
of the Dominion of Canada.

1887 — Canadian Pacific Railway completed from
Montreal to Vancouver.

THE TOURIST ASSOCIATION

PRESIDENT

Charles Hayward, Mayor of the City of Victoria

VICE-PRESIDENTS

L. G. McQuade, President Victoria Board of Trade,

D. R. Ker, President Brackman-Ker Milling Co.

A. B. Fraser, Sr., Hon. Treasurer

EXECUTIVE COMMITTEE

W. G. Cameron, Alderman E. E. Blackwood
Anton Henderson James Forman Stephen Jones

Frank I. Clarke, Secretary

Herbert Cuthbert, Travelling Representative



