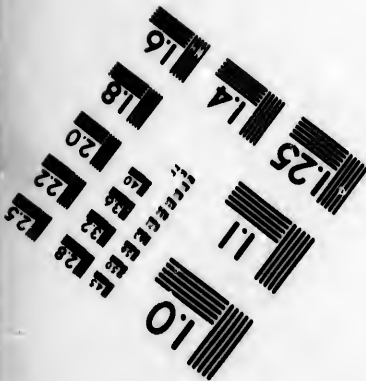
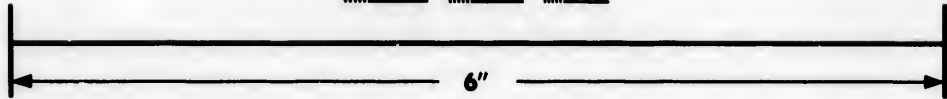
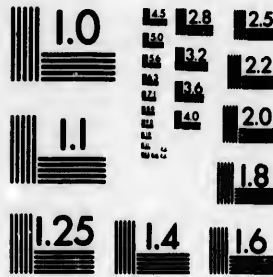


**IMAGE EVALUATION  
TEST TARGET (MT-3)**



**Photographic  
Sciences  
Corporation**

23 WEST MAIN STREET  
WEBSTER, N.Y. 14580  
(716) 872-4503

**CIHM/ICMH  
Microfiche  
Series.**

**CIHM/ICMH  
Collection de  
microfiches.**



**Canadian Institute for Historical Microreproductions / Institut canadien de microreproductions historiques**

**© 1987**

Technical and Bibliographic Notes/Notes techniques et bibliographiques

The Institute has attempted to obtain the best original copy available for filming. Features of this copy which may be bibliographically unique, which may alter any of the images in the reproduction, or which may significantly change the usual method of filming, are checked below.

L'Institut a microfilmé le meilleur exemplaire qu'il lui a été possible de se procurer. Les détails de cet exemplaire qui sont peut-être uniques du point de vue bibliographique, qui peuvent modifier une image reproduite, ou qui peuvent exiger une modification dans la méthode normale de filmage sont indiqués ci-dessous.

- Coloured covers/  
Couverture de couleur
- Covers damaged/  
Couverture endommagée
- Covers restored and/or laminated/  
Couverture restaurée et/ou pelliculée
- Cover title missing/  
Le titre de couverture manque
- Coloured maps/  
Cartes géographiques en couleur
- Coloured ink (i.e. other than blue or black)/  
Encre de couleur (i.e. autre que bleue ou noire)
- Coloured plates and/or illustrations/  
Planches et/ou illustrations en couleur
- Bound with other material/  
Relié avec d'autres documents
- Tight binding may cause shadows or distortion along interior margin/  
La reliure serrée peut causer de l'ombre ou de la distorsion le long de la marge intérieure
- Blank leaves added during restoration may appear within the text. Whenever possible, these have been omitted from filming/  
Il se peut que certaines pages blanches ajoutées lors d'une restauration apparaissent dans le texte, mais, lorsque cela était possible, ces pages n'ont pas été filmées.
- Additional comments:  
Commentaires supplémentaires:
- Coloured pages/  
Pages de couleur
- Pages damaged/  
Pages endommagées
- Pages restored and/or laminated/  
Pages restaurées et/ou pelliculées
- Pages discoloured, stained or foxed/  
Pages décolorées, tachetées ou piquées
- Pages detached/  
Pages détachées
- Showthrough/  
Transparence
- Quality of print varies/  
Qualité inégale de l'impression
- Includes supplementary material/  
Comprend du matériel supplémentaire
- Only edition available/  
Seule édition disponible
- Pages wholly or partially obscured by errata slips, tissues, etc., have been refilmed to ensure the best possible image/  
Les pages totalement ou partiellement obscurcies par un feuillet d'errata, une pelure, etc., ont été filmées à nouveau de façon à obtenir la meilleure image possible.

This item is filmed at the reduction ratio checked below/  
Ce document est filmé au taux de réduction indiqué ci-dessous.

10X	14X	18X	22X	26X	30X
<input type="checkbox"/>	<input type="checkbox"/>	<input type="checkbox"/>	<input checked="" type="checkbox"/>	<input type="checkbox"/>	<input type="checkbox"/>
12X	16X	20X	24X	28X	32X

The copy filmed here has been reproduced thanks to the generosity of:

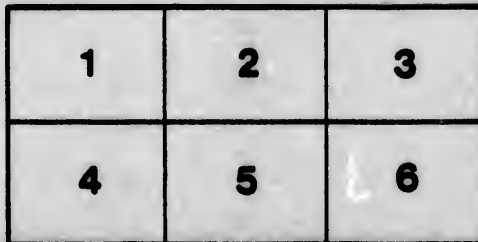
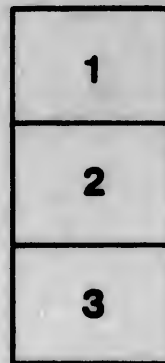
D. B. Weldon Library  
University of Western Ontario  
(Regional History Room)

The images appearing here are the best quality possible considering the condition and legibility of the original copy and in keeping with the filming contract specifications.

Original copies in printed paper covers are filmed beginning with the front cover and ending on the last page with a printed or illustrated impression, or the back cover when appropriate. All other original copies are filmed beginning on the first page with a printed or illustrated impression, and ending on the last page with a printed or illustrated impression.

The last recorded frame on each microfiche shall contain the symbol  $\rightarrow$  (meaning "CONTINUED"), or the symbol  $\nabla$  (meaning "END"), whichever applies.

Maps, plates, charts, etc., may be filmed at different reduction ratios. Those too large to be entirely included in one exposure are filmed beginning in the upper left hand corner, left to right and top to bottom, as many frames as required. The following diagrams illustrate the method:



L'exemplaire filmé fut reproduit grâce à la générosité de:

D. B. Weldon Library  
University of Western Ontario  
(Regional History Room)

Les images suivantes ont été reproduites avec le plus grand soin, compte tenu de la condition et de la netteté de l'exemplaire filmé, et en conformité avec les conditions du contrat de filmage.

Les exemplaires originaux dont la couverture en papier est imprimée sont filmés en commençant par le premier plat et en terminant soit par la dernière page qui comporte une empreinte d'impression ou d'illustration, soit par le second plat, selon le cas. Tous les autres exemplaires originaux sont filmés en commençant par la première page qui comporte une empreinte d'impression ou d'illustration et en terminant par la dernière page qui comporte une telle empreinte.

Un des symboles suivants apparaîtra sur la dernière image de chaque microfiche, selon le cas: le symbole  $\rightarrow$  signifie "A SUIVRE", le symbole  $\nabla$  signifie "FIN".

Les cartes, planches, tableaux, etc., peuvent être filmés à des taux de réduction différents. Lorsque le document est trop grand pour être reproduit en un seul cliché, il est filmé à partir de l'angle supérieur gauche, de gauche à droite, et de haut en bas, en prenant le nombre d'images nécessaire. Les diagrammes suivants illustrent la méthode.

TOWNSHIP

— OF —

**NORTH DORCHESTER**

**LIST OF VOTERS**

**FOR 1886.**

**VOTERS' LIST ACT.**

SEC. 2.—S. C. 4. The Sheriff shall immediately upon receipt of his copies cause one of them to be posted up in a conspicuous place in the Court House; the Clerk of the Peace upon the receipt of his copies shall cause one of them to be posted in a conspicuous place in his office; every Public or Separate School Master or Mistress shall in like manner post up one of his or her copies on the door of the School House; and every Postmaster shall post up one of his copies in his Post Office.

**LONDON, ONT.**

**M. D. DAWSON & Co., PRINTERS, 344 RICHMOND STREET.**

**1886.**

TOWNSHIP

NORTH BURGHESTER

LIST OF VOTERS

1  
2  
3  
4  
5  
6

Tha

No.  
9  
173  
174

7  
14  
16  
18  
120  
121  
124  
170  
171  
184  
288  
290

135  
136  
137  
138  
141  
142  
301  
307

125  
126  
127  
132  
133  
287  
292

# VOTERS' LIST, NORTH DORCHESTER, 1886.

## SCHEDULE OF POST OFFICES.

1 CRUMLIN.	7 EVELYN.	13 CRAMPTON.
2 DORCHESTER STATION.	8 MOSLEY.	14 HARRIETSVILLE.
3 THAMESFORD.	9 PUTNAM.	15 DERWENT.
4 LONDON.	10 INGERSOLL.	16 AVON.
5 LONDON EAST.	11 GLADSTONE.	17 BELMONT.
6 NILESTOWN.	12 VERCHOYLE.	18 LYONS.

### Polling Sub-Division No. 1.

Comprising Lots Nos. 1 to 9, both inclusive, in Concessions Nos. 1 2 3 and 4, North of the Thames.

### PART FIRST.

Persons entitled to vote at both Municipal Elections and Elections to the Legislative Assembly.

No. on Roll.	Name.	Con.	Lot.	P. O.	No. on Roll.	Name.	Con.	Lot.	P. O.
9	Alford Hugh, t.....	1		pt 1 1	112	Elliott, John, t.....	2		pt 9 2
173	Aylsworth, H. R., o.....	3	e	pt 5 2	131	English, Thos., o.....	2	n w	1 5 1
174 j	Aylsworth, Daniel P., o..	3	e	pt 5 2	262	Eckhardt, Tobias, t.....	4		pt 9 2
7	Baker, John, o.....	1		pt 1 1	6	Freden, John J., o.....	1		pt 1 1
14	Barnes, Thomas, o.....	1		pt 1 1	182 j	Ford, John J., o.....	3	n	pt 7 2
16 j	Bartlett, Wm., t.....	1	n	1 2 1	293	Fifield, Hiram, o.....	4		pt 9 2
18	Byers, Jas., o.....	1	s w	pt 1 1					
120 j	Bell, John, o.....	2	n	1 7 1	12	Goronson, Andrew, t....	1		pt 1 1
121	Bell, Wm., f. s.....	2	n	1 7 1					
124 j	Bets, George E., t.....	2	s w	1 7 2					
170	Beverley, David, o.....	3	w	pt 6 2					
171	Beverly, Adelbert, o....	4		pt 6 2					
184	Baker, Francis, t.....	3	s	pt 6 2	3	Hayward, Wm., o.....	1		pt 1 1
288	Bown, James, o.....	4		pt 9 2	13	Hazelett, Wm., o.....	1		pt 1 1
290	Beverly, John, o.....	4		pt 9 2	44	Henderson, Andw., sen., o.	1	w	pt 9 1
					45	Henderson, Andw., jr., t..	1	w	pt 9 1
					46	Henderson, Samuel, t....	1	w	pt 9 1
135	Creighton, James, o.....	2	s	1 4 6	159	Henry, Anthony, o.....	3	n	pt 2 6
136	Creighton, John, f. s....	2	s	1 4 6	183 j	Hayes, Elgin, t.....	3	n e	pt 6 2
137 j	Creighton, Kennedy, f. s..	2	s	1 4 6	192	Hunt, John, o.....	3	n	1 8 2
138	Creighton, Wm., f. s....	2	s	1 4 6	193 j	Hunt, John W., t.....	3	n	1 8 2
141	Crockett, Geo., o.....	2	s e	pt 2 6	305	Hunter, Charles, o.....	4		pt 9 2
142 j	Crockett, Jas., o.....	2	s w	pt 2 6					
301	Crews, Thomas, o.....	4		pt 9 2					
307	Cook, Jessie, t.....	4		pt 9 2					
					35	Isaac, Emanuel, o.....	1	n	1 6 1
					36	Isaac, Charles W., o.....	1	n	1 6 1
125	Downey, Wm., o.....	2	s	1 6 2	128	Irwin, Thos., sen., o.....	2	n	1 6 1
126 j	Downey, Patrick, f. s....	2	s	1 6 2	129	Irwin, Thos., jnn., f. s....	2	n	1 6 1
127 j	Downey, Christopher, f. s.	2	s	1 6 2	130 j	Irwin, Frederic, f. s....	2	n	1 6 1
132	Dickie, Robt., o.....	2	s	1 5 4					
133 j	Dickie, Jacob, o.....	2	s	1 5 4					
287	Duckworth, Lawrance, o..	4		pt 9 2	167 j	Kilborn, Isaac, o.....	3	n w	pt 5 2
292	Dunn, Thomas, o.....	4		pt 9 2	169 j	Kilborn, Walter, o.....	3		pt 6 2

NORTH DORCHESTER VOTERS' LIST.

No. on Roll.	Name.	Con.	Lot.	P. O.
23	Logan, Edward, o	1	e pt n 3	3 1
19 j	Mosop, John, o	1	s 1/2	2 1
150	Marsh, Wm., o	3	sw pt 1 &	2 6
151 j	Marsh, Jas., f. s.	3	ne pt 1 &	2 6
152 j	Marsh, Thomas, f. s.	3	ne pt 1 &	2 6
153 j	Marsh, Joseph, f. s.	3	pt 1 &	2 6
286	Mullen, John, o	4	pt 9	2
163 j	McIntyre, Daniel, o	3	n pt 4	2
164 j	McIntyre, James, o	3	n pt 4	2
115 j	Nichol, James, o	2	s 1/2	8 2
116 j	Nichol, Andrew, f. s.	2	s 1/2	8 2
117 j	Nichol, John, f. s.	2	s 1/2	8 2
114 j	Oliver, Wm., jun., o	2	n 1/2	9 2
139	Oliver, Wm., sen., o	2	ne pt 3	1
140	Oliver, Samuel, o	2	ne pt 3	1
143	Oliver, James, o	2	ne pt 3	1
302 j	O'Neil, Wm. H., o	4	pt 9	2
10	Payn, Elijah, t.	1	pt 1	1
37	Parker, Alexander, o	1	s 1/2	6 2
38 j	Parker, John, f. s.	1	s 1/2	6 2
134 j	Parker, Edward, o	2	ne 1/4	4 1
146	Parkinson, Thomas, o	2	n 1/2	1 1
154	Pearson, Wm., t.	3	s pt 1	6
296	Paynter, John, o	4	pt 9	2
297	Patterson, Geo., o	4	pt 9	2
113 j	Rogers, James, o	2	s pt 9	1
187 j	Rogers, Ephraim, o	3	sw 1/2	8 2
195 j	Robins, Peter, o	3	e pt 9	2
289	Richmond, Wm, o	4	pt 9	2
1	Smith, Thomas, o	1	s 1/2	1 1
2	Smith, Charles, o	1	s 1/2	1 1
11 j	Short, Charles, o	1	pt 1	1
17 j	Stevenson, George, o	1	se pt 1	1
26	Stothers, James, o	1	n 1/2	4 1
27 j	Stothers, Robert, f. s.	1	n 1/2	4 1
28	Stothers, Stepher, o	1	s pt 4	1
29 j	Stothers, James, f. s.	1	s pt 4	1
30 j	Stothers, Joseph, f. s.	1	s pt 4	1
147	Showler, John, o	3	n w pt 1	1

No. on Roll.	Name.	Con.	Lot.	P. O.
148 j	Showler, George, t.	3	n w pt 1	1
161 j	Swart, Lawyer, o	3	pt 2 &	3 6
165 j	Short, Thomas, o	3	sw pt 5	2
176	Shaw, R. E., o	3	pt 6	2
177 j	Shaw, W. H., t.	3	pt 6	2
178 j	Shaw, E. T., t.	3	pt 6	2
179	Shaw, Richard, t.	4	pt 7	2
180	Shaw, Lyman, t.	3	pt 6	2
181 j	Shaw, Sidney, f. s.	3	pt 6	2
194 j	Slaught, Abram, o	3	w pt 9	2
252	Swart, Rossel, o	4	w pt 8	2
253 j	Swart, Bartholomew, o	4	e pt 8	2
272	Stockdale, George, o	4	pt 9	2
288	Sage, James, o	4	pt 9	2
294	Sweet, Orlow, o	4	pt 9	2
298	St. Clair, Vining, t.	4	pt 9	2
4 j	Taylor, John, o	1	pt 1	1
47 j	Temple, Wm., o	1	e pt 9	1
48 j	Temple, James E., f. s.	1	e pt 9	1
284	Vannatter, Wm., o	4	pt 9	2
285	Vannatter, Geo., o	4	pt 9	2
21 j	Wood, James, t.	1	n 1/2	3 1
22 j	Wood, Daniel, t.	1	n 1/2	3 1
24	Weir, John, o	1	s 1/2	3 1
25	Weir, Wm. J., f. s.	1	s 1/2	3 1
31 j	Weir, Joseph C., o	1	n w pt 5	1
32 j	Weir, Wm. B., o	1	ne pt 5	1
33	Weir, Joseph, o	1	s 1/2	5 1
34	Weir, Joseph H., f. s.	1	s 1/2	5 1
40	Wilson, David, o	1	7	1
41 j	Wilson, Robert M., o	1	7	1
144	Weir, John, o	2	n w pt 3	1
122 j	Whittaker, George, o	2	se 1/2	7 2
118 j	Weir, Jas. H., o	2	n 1/2	8 1
145 j	Weir, Wm., o	2	s pt n 1/2	3 1
162 j	Wilson, Wm., o	3	pt 3 &	4 6
174	Wilson, Wm., o	3	n w pt 6	2
299 j	Wade, Geo., o	4	pt 9	2
208	Williams, Geo., sen.	4	pt 9	2
188 j	Young, Abraham, o	3	w 1/2	9 2
189 j	Young, Warner, f. s.	3	w 1/2	9 2
190 j	Young, David, f. s.	3	w 1/2	9 2

PART SECOND.

Persons entitled to vote at Municipal Elections only.

No. on Roll.	Name.	Con.	Lot.	P. O.
186	Ansell, Geo., h.	3	pt 8	2
149	Blake, Elias, o	3	n pt w pt 1	1
123	Clegg, Robert, o	2	sw 1/2	7
8	Dreaney, Robt., o	1	pt 1	1
303	Moore, James, o	4	pt 9	
185	O'Neil, John, o	3	sw 1/2	8

No. on Roll.	Name.	Con.	Lot.	P. O.
155	Parkinson, Samuel, o	3	s pt 1	
160	Reynolds, Henry, o	3	pt 2 &	3 6
306	Sage, Wm., o	4	pt 9	4
175	Shaw, Mrs., o	3	3 pt 7	2
156	Thompson, Miss, o	3	pt 1	
20	Wood, Mrs., o	1	w pt n 1/2	3 1
42	Weir, Mrs., o	1	8	1

No. on  
39  
304  
1079  
119  
15  
River  
List o  
No. on  
204 j  
264  
88  
205 j  
237 j  
257 j  
266 j  
271 j  
323 j  
324 j  
86  
247 j  
248 j  
263 j  
273 j  
278 j  
318 j  
321 j  
102  
103 j  
201 j  
235 j  
325 j  
226 j  
231 j  
59 j  
68 j  
281



NORTH DORCHESTER VOTERS' LIST.

PART THIRD.

Persons entitled to vote at the Elections of the Legislative Assembly.

No. on Roll.	Name.	Con.	Lot.	P. O.	No. on Roll.	Name.	Con.	Lot.	P. O.
39	Brookman, George, h	1	pt 6	2	158	McCutchian, John, h	3	pt 1	1
304	Graham, Angus, h	4	pt 9	2	43	Stevenson, Robert J., w. e.	1	8	1
1079	Hayes, Wm., w. e.	4	pt 9	2	157	Smith, Thomas, w. e.	3	3	6
119	Iland, James, h	2	n 1/2	8 1	166	Small, Charles, w. e.	3	5	2
15	Johnston, Joseph, e.	1	n 1/2	2 1	300	Williams, Geo., jun., w. e.	4	pt 9	2

Polling Sub-Division No. 2.

Comprising Lots Nos. 10 to 18, both inclusive, in Concessions Nos. 1, 2, 3, 4 and 5, North of the River Thames.

PART FIRST.

List of Persons entitled to vote at both Municipal Elections and Elections to the Legislative Assembly.

No. on Roll.	Name.	Con.	Lot.	P. O.	No. on Roll.	Name.	Con.	Lot.	P. O.
204 j	Alexander, James, t	3	e pt 12	2	81 j	Humphrey, Edward, o	1	n 1/2	18 3
264	Aylsworth, D. P., o	4	pt 10	2	82 j	Humphrey, Wm. H., f. s.	1	n 1/2	18 3
88	Bevens, Edwin, o	2	n e 1/2	17 3	197 j	Hunt, George, o	3	n 1/2	10 2
205 j	Barker, Esau, o	3	w pt 12	2	202	Hunter, Paul, o	3	c pt 12	2
237 j	Brown, David, t	4	w 1/2	14 2	249 j	Hunter, Thos., o	4	pt 11	2
257	Burdick, Albert, o	4	pt 10	2	250 j	Hunter, Frank, f. s.	4	pt 11	2
266 j	Burdick, I. N., o	4	pt 10	2	257 j	Hunter, Thomas, f. s.	4	pt 11	2
271 j	Buchanan, James, o	4	pt 10	2	277	Hayes, Mathew, o	4	pt 10	2
323 j	Buchanan, Daniel, o	5	pt 17	2	279 j	Hunt, James H., t	4	pt 10	2
324 j	Buchanan, Leonard, f. s.	5	pt 17	2	313 j	Ingram, Wm., o	5	pt 12 & 13	2
86	Counter, Richard, o	2	e pt 18	3	96 j	Johnston, Simon, o	2	e 1/2	15 3
247	Cook, James, o	4	pt 11	2	215 j	Jamieson, Robert, o	3	sw 1/2	16 3
248 j	Crow, Geo., o	4	pt 10	2	229 j	Jarret, Robert, t	4	pt 16	2
263 j	Chittick, W. H., o	4	pt 10	2	234 j	Johnston, Adam, o	4	n e 1/2	15 2
273	Collins, Wm., o	4	pt 10	2	255	Johnston, James, o	4	pt 11	2
278 j	Cartwright, Sidney R., o	4	pt 10	2	311	Johnston, Alex., o	5	pt 11 & 12	2
318 j	Cannor, Charles, o	5	n e pt 15	2	63 j	Lurkhurst, Edward, t	1	sw 1/2	13 5
321	Carrol, Dennis, o	5	s pt 16	2	227 j	Little, John, o	4	nw 1/2	17 2
102	Durand, John, sen., o	2	s 1/2	12 2	246	Lester, J. R., o	4	pt 11	2
103 j	Durand, John, jun., o	2	s 1/2	12 2	319 j	Laughlin, Barnabas, o	5	n e pt 16	2
201 j	Daw, Thos., t	3	s 1/2	11 2	56 j	Moore, Wm., o	1	n e pt 11	1
235	Duffield, Robt., o	4	e 1/2	14 2	70 j	Morrison, John, o	1	n 1/2	15 3
325 j	Dundas, Edwin, o	5	pt 18	2	71 j	Morrison, Wm., f. s.	1	n 1/2	15 3
226 j	Edwards, Charles, o	4	s 1/2	18 2	72 j	Morrison, Mathew, f. s.	1	n 1/2	15 3
231	English, John, o	4	s 1/2	17 2	99 j	Miller, Joseph C., o	2	n 1/2	14 3
59 j	Freden, Charles, t	1	12	1	101	Mitchell, Alex., o	2	n 1/2	11 2
68 j	Foster, Robt., o	1	s e 1/2	15 3	106 j	Mitchell, James, o	2	s 1/2	11 2
281	Goodier, Fredrick, t	4	pt 10	2	107 j	Marr, James, o	2	n 1/2	11 2
85 j	McMurray, Samuel, o	2	n 1/2	18 3	108	Marr, Robert, o	2	n 1/2	11 4
196 j	Monroe, Daniel, o	3	s 1/2	10 2	198 j	Monroe, Daniel, o	3	s 1/2	10 2
198	Mountain, J. H., o	3	n 1/2	11 2	312	Monk, L. D., o	5	pt 12	2



NORTH DORCHESTER VOTERS' LIST.

PART THIRD.

Persons entitled to vote at Elections to the Legislative Assembly only.

No. on Roll.	Name.	Con.	Lot.	P. O.	No. on Roll.	Name.	Con.	Lot.	P. O.
209	Alexander, Samuel, h.....				259	Mathews, Wm., h.....	4	pt 10	2
1078	Cook, Wm., w. e.....	2	pt 12		111	Oliver, Noble, h.....	2	pt 10	2
300	Dennison, Thomas, w. e. . . . .	4	pt 10	2	240	Ross, Daniel, h.....	4	pt 11	2
98	Henry, Patrick, h.....	2	pt 15	3	83	Spise, Charles, w. e.....	1	pt 18	
256	Lawson, Andrew, h.....	4	pt 11	2	1077	White, Frederick, w. e....	4	pt 10	2

Polling Sub-Division No. 3.

Comprising lots A, B and No. 1 to 12, both inclusive, in Concession A, B and No. 1, South of the River Thames.

PART FIRST.

Persons entitled to vote at both Municipal Elections and Elections to the Legislative Assembly.

No. on Roll.	Name.	Con.	Lot.	P. O.	No. on Roll.	Name.	Con.	Lot.	P. O.
328	Aylsworth, Wm. T., o.....	A	pt 2	9	471	Dundass, Wm., o.....	B	pt 6	9
510	Atkins, Richard, t.....	1	4	9	437	Dundass, John C., f. s....	B	pt A & B	9
521	Allison, Anthony, sen., o. . . . .	1	w 1/2	7 9	438	Dundass, Albert J., f. s....	B	pt A & B	9
522	Allison, Anthony, jun., f. s. . . . .	1	w 1/2	7 9	439	Dundass, Nathaniel, f. s....	B	pt A & B	9
532	Arms, Thomas, o.....	1	se 1/2	11 8	490	Dundass, Edward, f. s....	B	pt A & B	9
	Beacham, James E., t.....	A	w pt 9	9	499	Dundass, Charles, o.....	1	w 1/2	9
436	Bennet, George, t.....	B	pt 11	2	500	Dundass, Robert, f. s....	1	w 1/2	9
438	Budden, George, o.....	B	n pt 11 & 12	2	501	Dundass, Wm., f. s....	1	w 1/2	9
466	Boughner, Jacob, o.....	B	pt 4	9	503	Dundass, John N., o.....	1	e 1/2	9
468	Bennet, Stephen, o.....	B	pt 4	9	548	Dakins, Mark, o.....	1	sw pt 12	8
491	Butler, Edwin, o.....	1	e pt A	10	549	Dakins, Luke, o.....	1	sw pt 12	8
492	Butler, Francis, f. s....	1	e pt A	10					
498	Bear, Thomas, t.....	1	e 1/2	1 9	516	Empey, Adam, o.....	1	n 1/2	6 9
529	Bankes, John, t.....	1	se 1/2	10 8	517	Empey, Andrew, f. s....	1	n 1/2	6 9
534	Beacham, Wm., o.....	1	sw pt 11	8	518	Empey, Adam, f. s....	1	n 1/2	6 9
					520	Empey, Wm., o.....	1	n e 1/2	7 9
					525	Egan, Wm., o.....	1	e 1/2	9 8
					530	Eagan, John, o.....	1	sw pt 10	8
439	Capstick, Jonathan, o.....	B	n w pt 10	2					
440	Capstick, Wm. E., f. s....	B	n w pt 10	2	435	Foreman, John, o.....	B	pt 12	2
441	Capstick, Albert, f. s....	B	n w pt 10	2	443	Fulkinson, Joseph, o.....	B	n w 1/2	9 9
453	Clifford, Robert, o.....	B	pt 5	9	445	Fifield, Hiram, o.....	B	se 1/2	10 2
478	Conch, Joseph, o.....	B	pt 3	9	462	Fralick, Mannus, t.....	B	pt 4	9
479	Couch, Wm., f. s....	B	pt 3	9	475	Fralick, George, o.....	B	pt 4	9
481	Choate, John, o.....	B	2	9					
482	Choate, Charles, f. s....	B	2	9	526	Goodmand, Enoch, t.....	1	w 1/2	9 8
483	Choate, Frederick, f. s....	B	2	9	1075	Graham, George, o.....	1	pt 12	4
504	Collins, James, sen., o. . . . .	1	e 1/2	3 9					
505	Collins, James, jun., f. s. . . . .	1	e 1/2	3 9	327	Howie, George, o.....	A	n w pt 1	9
506	Collins, David, t.....	1	sw pt 3	9	334	Hampton, Richard, o.....	A	11 & 12	2
507	Collins, Wm., o.....	1	n w pt 3	9	459	Harding, Wm., o.....	B	pt 4	9
508	Collins, John, t.....	1	nw pt 3	9	463	Hannen, Elijah, o.....	B	pt 4	9
					484	Halpin, Edward, o.....	B	pt A & B	9
437	Densham, Wm., o.....	B	pt 11 & 12	2	485	Halpin, Patrick, o.....	B	pt A & B	9
461	Day, James, t.....	B	pt 4	9					
470	Dundass, James, o.....	B	pt 4	9					

## NORTH DORCHESTER VOTERS' LIST.

No. on Roll.	Name.	Con.	Lot.	P. O.	No. on Roll.	Name.	Con.	Lot.	P. O.
494	Huntly, Thomas, o.....	l	n pt A & B	9	333	Rippon, George, o.....	A	e pt 10	2
					452	Rouke, Bartholomew, o.....	B	pt 5	9
					457	Bussel, John, o.....	B	pt 4	9
326 j	Irwin, George, o.....	A	n e pt 1	9	467	Rath, Mathew, o.....	B	pt 4	9
					513	Rowse, James H., o.....	l	w 1/2	5 9
330 j	Jones Adam, t.....	A	s pt 1	9	332 j	Smith, Jacob, o.....	A	o pt 9	9
					442 j	Sharon, Wm., t.....	B	n w pt 9	2
434 j	Malpass, Alford, o.....	B	e pt 12	2	446 j	Small, Charles, o.....	B	s pt 8	9
450	Martin, Wm., o.....	B	pt 5	9	447 j	Small, James, o.....	B	pt 7	9
469	Magee, Charles A., o.....	B	pt 4	9	451 j	Sharp, Isaih, o.....	B	pt 5 & 6	9
496 j	Magee, Isaac, t.....	B	pt B	9	464	Skinner, Wm., t.....	B	pt 4	9
497 j	Magee, Edward, t.....	l	pt B	9	465	Sharon, John, o.....	B	pt 4	9
527 j	Morrison, Wm., o.....	l	w pt 10	8	493 j	Shannon, John, o.....	l	s pt A	9
					495 j	Sharp, Caleb, o.....	l	s w pt B	9
455 j	McNiven, Angus, o.....	B		4 9	449	Taylor, James, t.....	B	pt 6	9
456 j	McNiven, Hugh, o.....	B		4 9					
474 j	McKinsie, Rowald, o.....	B		pt 4 9	519 j	Uglov, Wm., o.....	l	s e 1/2	7 9
476	Oliver, Wm., t.....	B		pt 3 9	331 j	Venning, Andrew, t.....	A	pt 9 & 10	9
					444 j	Vinoent, Edward, o.....	B	e pt 9	9
	Park, Joseph, t.....	A		pt 2 9	523 j	Wallis, Walter, o.....	l	e 1/2	8 9
512 j	Palmer, David, t.....	l		e 1/2 5 9	524 j	Wallis, Kidman, o.....	l	w 1/2	8 9
545 j	Pyatt, James, o.....	l		pt 12 8					
546 j	Pyatt, George, f. s.....	l		pt 12 8					

## PART SECOND.

Persons entitled to vote at Municipal Elections only.

509	Atkins, John, o.....	l		4 10	454	Clifford, Isaac, o.....	B	pt 5
540	Anderson, John, o.....	l		pt 11 15	486	Dundass, Mrs., o.....	B	s pt A & B 9
536	Bratt, George, o.....	l		pt 11 17	547	Frank, Thomas, o.....	l	pt 12 4
537	Bratt, Jessie, o.....	l		pt 11 17	535	Kernohan, Wm., o.....	l	pt 11 15
435	Bernet, Thomas, o.....	B		s pt 11	543	Rae, Wm., o.....	l	pt 11 15
542	Blair, James, o.....	l		pt 11 15				
543	Beattie, Wm., o.....	l		pt 11 15	473	Stewart, John, o.....	B	pt 4 10
					591	Sifton, Joseph, o.....	l	e 1/2 5 3
320	Chambers, Wm., o.....	A		pt 11				

## PART THIRD.

Persons entitled to vote at the Legislative Assembly only.

502	Dundass, Thos., h.....	l		pt 1 9	531	Ivy, Richard, h.....	l	pt 10 8
458	Fralick, Wm., h.....	B		pt 4 9				
550	Forrester, Henry, h.....	l		pt 12 8	460	Lewis, Wm., h.....	B	pt 4 9
1075	Graham, George.....	l		pt 12 4	448	Small, John, h.....	B	pt 7 9
					480	Strobridge, Lawrance, h.....	B	pt 3 9
1514	Harris, Geo., h.....	l		pt 5 9				

NORTH DORCHESTER VOTERS LIST.

Polling Sub-Division No. 4.

Comprising Lots Nos. 13 to 24, both inclusive, in Concessions A, B, and No. 1, South of the River Thames.

PART FIRST.

Persons entitled to vote at both Municipal Elections and Elections to the Legislative Assembly.

No. on Roll.	Name.	Con.	Lot.	P. O.	No. on Roll.	Name.	Con.	Lot.	P. O.
537	Aylsworth, Wm. N., o.....	l	n e	17 2	393	Harris, John, f. s.....	B	e pt	21 6
538	Aylsworth, Richard P., o.....	l	n w	17 2	394	Harris, Henry, jun., f. s.....	B	e pt	21 6
563	Abbott, Benjamin, o.....	l	s w pt	18 2	413	Hayes, James, o.....	B	pt	17 2
316	Baker, Jessie, o.....	A	pt	17 2	337	Johnston, Geo., t.....	A	pt	17 2
352	Buck, J. B., o.....	A	e pt	21 2	347	Johnston, Wm., o.....	A	pt	17 2
353	Buck, J. W., f. s.....	A	e pt	21 2	355	James, James A., o.....	A	pt	23 6
369	Barrows, J. C., t.....	A	pt	24 6	380	Jackson, Wm., o & otherlands	B	pt	24 6
370	Barrows, Isaac, o.....	A	pt	24 6	577	Jackson, David, o.....	l	n	23 6
382	Barnard, Luther, o.....	B	n pt	24 6	578	Jackson, John, o.....	l	n	23 6
383	Barnard, Albert, f. s.....	B	n pt	24 6					
405	Barry, David, o.....	B	n w pt	18 2	357	Kellam, Thos. o.....	A	n e pt	18 2
407	Ball, Mr., o.....	B		18 2					
409	Birch, H. W., o.....	B	n e	18 2	348	Lyman, Stephen, o.....	A	pt	17 2
424	Bankes, Wm., o.....	B	n w	13 2	360	Leith, Wm., o.....	A	pt	23 & 24 6
425	Budden, Stephen, o.....	B	n e pt	13 2	388	Lewis, Wm., t.....	B	s w pt	20 6
429	Bankes, Osborne, o.....	B	e pt	13 6	564	Lane, J. B., o.....	l	s	18 2
562	Bell, John, t.....	l	n w pt	18 2	565	Lane, N. J., f. s.....	l	s	18 2
					566	Lane, J. H., f. s.....	l	s	18 2
					567	Lane, Wm. B., f. s.....	l	s	18 2
335	Chittick, Francis, o.....	A	pt	18 2	342	Mitchell, Joseph, o.....	A	pt	17 2
336	Chittick, Frank, f. s.....	A	pt	17 2	351	Maybe, Arlow, o.....	A	pt	20 2
338	Chittick, Geo., t.....	A	pt	17 2	375	Myrick, Levie, o.....	A	pt	24 6
354	Collar, David, t.....	A	pt	17 2	423	Mooney, Geo, t.....	B		14 2
355	Collier, John, t.....	A	pt	17 2	576	Morehouse, Charles, t.....	l	n e pt	22 6
350	Cartwright, Wm., o.....	A	pt	19 2	390	Madole, David, o.....	B	e w pt	19 2
354	Cartwright, James, o.....	A	w pt	21 2					
373	Craig, Wm., o.....	A	pt	24 6	419	McDonald, James.....	B	n e pt	17 2
418	Cave, Wm., o.....	B	n pt	16 2	420	McLean, Robert, o.....	B	w	15 2
570	Court, Samuel, o.....	l	s w	20 6	422	McLean, Hugh, o.....	B	e	15 2
581	Court, Wm., o.....	l	s pt	24 6	425	McSlay, Mathew, o.....	B	pt	13 2
582	Court, John, f. s.....	l	s pt	24 6					
623	Cowan, Hugh, o.....	l	n	22 15	359	Paggott, Henry, o.....	A	pt	23 6
624	Cowan, Wm., t.....	l	n	22 6					
410	Dunn, John, o.....	B	s	17 2	351	Richardson, Thos., t.....	A	pt	17 2
568	Duncan, Wm., o.....	l	e	20 6	362	Rowat, Archibald, o.....	A	pt	24 6
					386	Rolph, James, o.....	B	s e pt	22 6
384	Edwards, Wm., o.....	B	n w pt	21 6	387	Rolph, Solomon, f. s.....	B	s e pt	22 6
385	Edwards, Walter, f. s.....	B	n w pt	21 6	574	Ridler, Wm., o.....	l	e pt	22 6
334	Fordyce, Geo., o.....	A	pt	17 2					
583	Francis, Geo. W., o.....	l	n	24 6	339	Sweet, Nathan, o.....	A	pt	17 2
365	Gilmour, Andrew, o.....	A & B	n pt	23 6	341	Smith, Edwin, o.....	A	pt	17 2
366	Gilmour, John, o.....	B	s pt	23 6	345	Snively, David, o.....	A	pt	17 2
367	Gilmour, David, o.....	B	s e pt	22 6	340	Smith, James C., t.....	A	pt	17 2
406	Graham, Joseph, o.....	B	e pt	18 2	395	Smith, Peter, o.....	B	n w pt	20 6
571	Gilmour, James, o.....	l	n	21 6	396	Smith, Aaron, f. s.....	B	n w pt	20 6
389	Harris, Geo., o.....	B	s w	21 6	398	Smith, Phillip, t.....	B	pt	20 6
392	Harris, Henry, o.....	B	e pt	21 6					

NORTH DORCHESTER VOTERS' LIST.

No. on Roll	Name.	Con.	Lot.	P. O.	No. on Roll	Name.	Con.	Lot.	P. O.
403	Smith, Melvin, o.....	B	n e	pt 19 2	343	Vincent, John, o.....	A	pt 17 2	
403	Smith, Alford, o.....	B	s w	pt 18 2					
426	Steele, John, t.....	B	n e	pt 13 2					
427	Steele, Robert, t.....	B	n e	pt 13 2					
553	Smith, Adelbert, o.....	1	n	pt 16 2					
554	Strathdee, Geo., o.....	1	s	pt 15 8	342	Walker, Geo., t.....	A	pt 17 2	
					343	Walker, Francis, t.....	A	pt 17 2	
350	Turnbull W., o.....	A		pt 17 2	391	Wilkins, John, t.....	B	c pt 20 6	
401	Turpin, James, f. s.....	B	e	pt 19 2	399	Watson, Wm., t.....	B	pt 18 2	
402	Temple, James, o.....	B	n	pt 19 2	431	Whealy, Wm. S., o.....	B	e pt 13 2	
579	Thompson, David, o.....	1	s	½ 23 15	432	Whealy, A. W., f. s.....	B	e pt 13 2	
580	Thompson, Andrew, o.....	1	s	½ 23 15	552	Walker, John, t.....	1	s ½ 13 8	
					572	Webber, Robert, o.....	1	s w ½ 21 6	

PART SECOND.

Persons entitled to vote at Municipal Elections only.

379	Blodget, Charles.....	B		pt 24	555	McKerlie, Wm., o.....	1	n e	pt 14 4
406	Barry, Michael, o.....	B	n w	pt 18 4	556	McKerlie, John, o.....	1	n e	pt 14 4
539	Barns, John, o.....	1		pt 15 15	378	O'Dell, F. A., o.....	B	pt	24 6
544	Carrothers, Michael, o.....	1		pt 15 17	414	O'Brine, Joseph, o.....	B	n w	½ 17 6
356	Gee, Mrs., o.....	A	c	pt 18 2					
372	Giles, Fred., o.....	A		pt 24	358	Partlo, Wm., o.....	A	pt	18 10
376	Jackson, Mrs., o.....	A		pt 24 6	368	Piggott, Mrs., o.....	A	pt	18 6
569	Lewis, Mrs., o.....	1	n w	½ 20 6	397	Stronghill, Byron, o.....	B	pt	20
349	Morley, Samuel, o.....	A		pt 17 4	400	Turpin, Mrs., o.....	B	e	pt 19 2
551	Morehouse, Thos., o.....	1		pt 15 4					
575	Morehouse, Jeremiah, o.....	1	n e	pt 22 4	381	Wilson, Joseph, o.....	B	pt	24 6

PART THIRD.

Persons entitled to vote at the Elections of the Legislative Assemble only.

430	Bankes, Geo., h.....	B	s e	pt 13 8	352	Richardson, John, h.....	A	pt	17 2
572	Bendle, John, w. e.....	1		21 6					
364	Flemming, Wm., h.....	A		pt 24 6	359	Spice, Thomas, w. e.....	1	pt	18 6
363	Flemming, Alex., w. e.....	A		24 6	404	Smith, Wm., h.....	B	pt	18 2
					560	Smith, Anthony, h.....	1	pt	18 2
417	Holt, John, h.....	B		pt 16 2	559	Vannatter, George, h....	1	pt	16 2
361	Leith, Alex., h.....	A	pt	23 & 24 6	357	Westerfield, James, h....	A	pt	22 6
					358	Whitehead, Joseph, h....			
421	McLean, Wm., w. e. ....	B		15 2	371	Warden, Henry, h.....	A	pt	24 6
					412	Watkins, Joseph, h.....	B	pt	21 7

Th  
No.  
103  
104  
669  
670  
671  
680  
818  
819  
828  
831  
832  
833  
839  
840  
841  
842  
843  
1021  
1063  
680  
802  
807  
808  
809  
827  
829  
1035  
1036  
1057  
689  
872  
817  
823  
824  
1040  
1069  
813  
814  
815  
820  
1031  
1032  
1028  
1029  
860

NORTH DORCHESTER VOTERS' LIST.

Polling Sub-Division No. 5.

Comprising lots 19 to 24 both inclusive, in Concession 2, 3, 4, 5, and 6 South of the River Thames.

PART FIRST.

Persons entitled to vote at both Municipal Elections and Elections to the Legislative Assembly.

No. on Roll.	Name.	Con.	Lot.	P. O.	No. on Roll.	Name.	Con.	Lot.	P. O.
1038	Abbot, Albert, o.	6	pt 24	17	1656	Henry, Wm., o.	6	pt 24	17
1041	Abbot, Wm., o.	6	pt 24	17	1061	Hall, John, o.	6	pt 24	17
660	Beattie, Edward, o.	2	21	15	665	Jeffry, Thomas, o.	2	e 1/2	20 15
670	Beattie, James, f. s.	2	21	15	666	Jeffry, Andrew, o.	2	e 1/2	20 15
671	Beattie, John P., o.	2	á e pt	23 15	679	Jackson, Sidney, o.	2	s 1/2	24 15
680	Beattie, Charles, o.	3	n 1/2	24 15	805	Jackson, Henry, o.	4	s pt	19 11
818	Barton, George, o.	4	n 1/2	23 15	838	Kernott, Japhet, o.	5	s e 1/2	22 17
819	Barton, Warren, o.	4	n 1/2	23 15	1040	Kindree, James, o.	6	pt	24 17
828	Booth, Wm., o.	5	e pt	24 17	1070	Kenedy, Charles, t.	6	pt	24 17
831	Brown, Archie, o.	5	s w 1/2	23 17	803	Lester, Alex., t.	4	s e pt	19 11
832	Brown, Dugald, sen., o.	5	e 1/2	23 17	848	Leaman, Samuel, t.	5	s e 1/2	20 11
833	Brown, Dugald, jun., f. s.	5	e 1/2	23 17	686	Manning, Geo. R., o.	3	pt	24 15
839	Brown, Neil, sen., o.	5	s 1/2	21 17	835	Moore, Wm., sen., o.	5	n e pt	22 11
840	Brown, Neil, jun., o.	5	s 1/2	21 17	836	Moore, Wm., jun., f. s.	5	n e pt	22 11
841	Brown, John, o.	6	w 1/2	23 17	845	Marsh, Elgin, o.	5	n & e pt	19 11
842	Brown, Hugh, o.	5	s 1/2	21 17	849	Marsh, Randle, o.	5	n e pts	19 11
843	Brown, Archie, o.	5	n 1/2	21 11	1023	Marsh, Wm R., o.	6	n pt	19 11
1021	Brook, Francis, t.	6	s pt	19 14	1034	Manning, Gabriel, o.	6	pt	24 17
1063	Bain, George, o.	6	pt	24 17	662	McKay, Donald, o.	2	19	2
680	Campbell, Neil, t.	3	n 1/2	19 11	663	McNiven, Angus, t.	2	19	2
802	Campbell, John, t.	4	c pt	19 11	664	McNiven, James, t.	2	19	2
807	Campbell, Wm., o.	4	n 1/2	20 11	670	McLellan, Robert J., o.	2	s e pt	23 15
808	Campbell, Daniel, o.	4	s e pt	20 11	681	McLellan, James, o.	3	s e pt	23 & 24 15
809	Campbell, Wm., o.	4	n 1/2	20 11	682	McLellan, John, o.	3	s e pt	23 & 24 15
827	Collard, Marshall, o.	5	n w 1/2	24 17	674	McVicar, John, o.	4	n e 1/2	22 15
829	Collard, Wm., o.	5	n pt s 1/2	24 17	675	McCallum, Neil, o.	3	w 1/2	20 11
1035	Campbell, Jas. B., o.	6	pt	24 17	676	McCallum, Neil, jun., o.	3	w 1/2	20 11
1036	Collie, Wm., o.	6	pt	24 17	677	McCallum, Duncan, o.	3	e 1/2	20 11
1057	Campbell, Duncan, o.	6	pt	24 17	679	McCallum, Angus, o.	3	s w pt	19 11
680	Dodd, Andrew, o.	3	e 1/2	22 15	810	McCallum, Daniel, o.	4	n 1/2	21 15
672	Dibb, James, o.	3	s w 1/2	22 15	811	McCallum, Neil, t.	4	n 1/2	21 15
817	Dibb, John G., o.	4	n w 1/2	22 15	812	McCallum, Angus, t.	4	n 1/2	21 15
823	Dibb, John, o.	4	e pt	24 15	821	McLellan, James, o.	4	n e pt	24 15
824	Dibb, Richard, o.	4	n pt s 1/2	24 15	825	McClary, John, t.	4	n pt s 1/2	24 15
1040	Dyer, Omeo, o.	6	pt	24 17	826	McCallum, John, o.	4	s w 1/2	24 17
1069	Dibb, Daniel, o.	6	pt	24 17	846	McMurray, Levi, o.	5	n pt	19 11
813	Farquhar, Charles, o.	4	s e 1/2	21 11	1042	McKellar, Daniel, o.	6	pt	24 17
814	Farquhar, John, son, o.	4	s w 1/2	21 11	1043	McKellar, George, o.	6	pt	24 17
815	Farquhar, John, jun., f. s.	4	s w 1/2	21 11	1053	McPhail, James W., o.	6	pt	24 17
820	Fluch, John, o.	4	s 1/2	23 17	1054	McPherson, Robert, o.	6	pt	24 17
1031	Fitchet, James, o.	6	e 1/2	22 17	1055	McPherson, John, o.	6	pt	24 17
1032	Fitchet, Ransom, o.	6	e 1/2	23 17	1065	McPhail, Archie, o.	6	pt	24 17
1028	Groat, Edward, o.	6	21	11	834	Orr, Wesley, o.	5	n w 1/2	22 17
1029	Groat, Wm., f. s.	6	21	11	860	Hazen, Mark, o.	5	e pt	19 11

Lot. P. O.  
pt 17 2

pt 17 2  
pt 17 2  
c pt 20 6  
pt 18 2  
e pt 13 2  
e pt 13 2  
s 1/2 13 8  
s w 1/2 21 6

n e pt 14 4  
n e pt 14 4  
pt 24 6  
n w 1/2 17 6  
pt 18 10  
pt 18 6  
pt 20  
e pt 19 2  
pt 24 6

pt 17 2  
pt 18 6  
pt 18 2  
pt 18 2  
pt 10 2  
pt 22 6  
pt 24 6  
pt 21 7

NORTH DORCHESTER VOTERS' LIST.

No. on Roll.	Name.	Con.	Lot.	P. O.	No. on Roll.	Name.	Con.	Lot.	P. O.
674	Passmore, George, o.....	2	n pt	23 15	677	Thompson, Robert, o... .	2	n w ½	24 15
675	Passmore, Wm. J., f. s. . .	2	n pt	23 15	857	Tooley, Richard, o.....	5	s e pt	19 14
671	Pickle, Wilmot, o.....	3	n ½	21 15	1052	Taylor, John, o.....	6		pt 24 17
1039	Potts, Joseph, o.....	6		pt 24 17					
837	Rogers, Albert, o.....	5	n w	pt 22 17					
844	Rogers, Edward, o.....	5	n e ½	20 11					
687	Shields, James, o.....	3	n pt	23 15	683	Walker, David, o.....	3	s w pt	24 15
688	Shields, Charles, f. s.....	3	n pt	23 15	684	Walker, Samuel, f. s.....	3	s w pt	24 15
806	Swails, Bartholomew, o. .	4	n ½	19 11	685	Walker, David, jun., f. s.	3	s w pt	24 15
816	Stuart, John, t.....	4	s w ½	22 11	804	Watcher, Wm., t.....	4		pt 19 11
822	Sanderson, Samuel, o.....	4	n w	pt 24 15	847	Watcher, Geo., t.....	5		pt 19 11
1026	Shain, James M., o.....	6	s pt	20 17	1031	Willis, Geo., o.....	6	w ½	22 17
1044	Shelden, Charles, o.....	6		pt 24 17	1033	Willis, Merritt, o.....	6		pt 24 17
1060	Stuart, Alex., o.....	6		pt 24 17	1050	Willis, Isaac, o.....	6		pt 24 17
667	Thompson, Wm., sen., o. .	2	w ½	20 6	1062	Wright, Charles, o.....	6		pt 24 17
668	Thompson, Wm., jun., f. s.	2	w ½	20 6	1068	Weldon, James H., t. . .	6		pt 24 17
672	Thompson, Wm., o.....	2	s ½	22 15					
673	Thompson, James B., f. s.	2	s ½	22 15	1024	York, Augustus, o.....	6	n w	pt 19 11
					1025	York, Hiram, o.....	6	n pt	20 11

PART SECOND.

Persons entitled to vote at the Municipal Elections only.

No. on Roll.	Name.	Con.	Lot.	P. O.	No. on Roll.	Name.	Con.	Lot.	P. O.
1064	Barnes, Mrs., o.....	6		pt 24	673	McVicar, Mrs., o.....	3	s ½	21 15
1037	Foster, Mrs., o.....	6		pt 24 17	1058	McNiven, Robert, o.....	6		pt 24 10
1066	Ferguson, Mrs., o.....	6		pt 24 17	1070	Nugent, Thomas, o.....	6		pt 24
1059	Glance, Mrs., o.....	6		pt 24	830	Venning, Andrew, o.....	5	s w ½	24 17
678	Manning, Charles, o.....	2	s w ½	n ½ 24	1051	Willis, Mrs., o.....	6		pt 24 17
1045	Longfield, George, o.....	6		pt 24					

PART THIRD.

Persons entitled to vote at Elections to the Legislative Assembly only.

No. on Roll.	Name.	Con.	Lot.	P. O.	No. on Roll.	Name.	Con.	Lot.	P. O.
1046	Cliff, Edwin, h.....	6		pt 24 17	1047	McPhail, James W., h....	6		pt 24 17
					1067	McCord, Robert, h.....	6		pt 24 17
670	Little, Robert, w. e. . . .	3	n ½	22 15	684	Oliver, Thomas, w. e. . . .	4		19 11
678	McCallum, George, h....	3		pt 19 11	1022	Buckle, Daniel B., h....	6		pt 19 14
810	McCallum, Archie, h....	4		pt 20 11	1049	Smith, James H., h.....	6		pt 24 17
1027	McDonald, John A., w. e. .	6		20 11					



NORTH DORCHESTER VOTERS' LIST.

Polling Sub-Division No. 6.

Comprising Lots Nos. 13 to 18, both inclusive, in Concessions Nos. 2, 3, 4, 5 and 6, South of the River Thames.

PART FIRST.

Persons entitled to vote at both Municipal Elections and Elections to the Legislative Assembly.

No. on Roll.	Name.	Con.	Lot.	P. O.	No. on Roll.	Name.	Con.	Lot.	P. O.
661	Armer, Archie, f. s.	2	18	11	854	Hunter, Paul, o.	5	n pt	18 11
859	Archer, Samuel, t.	5	s ½	16 14	860	Hunter, Wm., o.	5	n e ½	16 11
1016	Abbott, Wm., o.	6	n ½	18 14	861	Hunter, Thomas, o.	5	n w pt	15 11
1017	Abbott, Edward, f. s.	6	n ½	18 14	867	Hazen, Daniel, o.	5	s w pt	13 14
1018	Abbott, John, f. s.	6	n ½	18 14	868	Hazen, James, o.	5	r w pt	13 14
641	Bankes, Wm. G., o.	2	n e ½	13 8	705	Jelly Wm., o. & other lands	3	n pt	13 8
642	Bankes, Richard, f. s.	2	n e ½	13 8	791	Jackson, Wm., o.	4	s pt	16 11
643	Bankes, Edmond J., f. s.	2	n e ½	13 8	870	Jelly, John J., o.	5	s e pt	13 14
688	Brunskill, Thomas, o.	3	s e ½	17 11	785	Kunze, Francis, o.	4	s ½	13 14
798	Brodie, Alex. A., o.	4	s pt	18 11	856	Kingwell, Isaac, t.	5	pt	16 11
1010	Barr, Wm., o.	6	n w pt	16 14	640	Myrick, Gardner, o.	2	w ½	13 8
638	Coats, Wm., o.	2	s w pt	13 8	650	Malpass, Wm. F., o.	2	s pt	15 8
639	Coats, Wm., f. s.	2	s w pt	13 8	651	Malpass, William, f. s.	2	s pt	15 8
687	Collard, Joseph, t.	3	s w ½	17 11	794	Manning, Jacob, o.	4	n w ½	17 11
691	Campbell, James, o.	3	s ½	15 8	654	McNiven, Donald, o.	2	n ½	17 2
692	Campbell, Daniel, o.	3	s ½	15 8	658	McNiven, Angus, o.	2		18 11
693	Campbell, Colin, o.	3	s pt n ½	15 8	659	McNiven, Archie, f. s.	2		18 11
694	Campbell, Daniel, f. s.	3	s pt n ½	15 8	660	McNiven, Wm., f. s.	2		18 11
695	Campbell, David, o.	3	n pt	15 8	689	McCallum, John, o.	3	s ½	16 8
696	Campbell, Colin, f. s.	3	n pt	15 8	702	McCallum, James, o.	3	n ½	14 8
697	Campbell, John, f. s.	3	n pt	15 8	787	McCallum, Peter, o.	4	w ½	15 11
698	Campbell, Archie, f. s.	3	n pt	15 8	788	McCallum, Angus, f. s.	4	w ½	15 11
793	Cooper, Lewis, o.	4	n e ½	17 11	789	McCallum, James, f. s.	4	w ½	15 11
879	Callhoun, Samuel, o.	5	pt	13 14	799	McCallum, John, o.	4	s pt	18 11
1004	Cline, Seth, o.	6	s pt	13 14	855	McMurray, Morris, o.	5	n e pt	18 11
686	Demaray, David, o.	3	s e pt	18 11	874	McKee, Joseph, f. s.	5	n w pt	13 14
786	Dunn, John P., o.	4	n ½	13 8	866	Northcote, John, t.	5	n w pt	14 14
792	Demaray, Pheinas, o.	4	n pt	16 11	644	Spring, David, o.	2	s w pt	14 8
876	Davidson, George, t.	5	s e pt	13 14	645	Spring, Daniel, o.	2	pt	14 8
852	Ewin, Freeman, o.	5	n e pt s ½	18 11	648	Strathdee, James, t.	2	n pt	15 8
853	Ewin, John, o.	5	s w pt	18 11	649	Strathdee, John, t.	2	n pt	15 8
1007	Eaton, James, o.	6		14 14	852	Spring, Edward, o.	2	n e ½	16 8
1011	Ewens, Samuel, o.	6	s ½	16 14	685	Stanly, George, o.	3	s w pt	18 11
1012	Ewens, Wm., o.	6	s ½	16 14	703	Spence, Thomas, o.	3	n e pt	13 8
1013	Ewens, James, o.	6	n pt	17 14	862	Secord, Adam H., o.	5	s pt	15 14
1014	Ewens, James, o.	6	n pt	17 14	863	Secord, Wm. B., t.	5	s pt	15 14
1015	Ewens, Robert, o.	6	n pt	17 14	864	Secord, Adam E., t.	5	s pt	15 14
865	Finch, Henry, o.	5	pt	14 14	699	Topham, Peter, o.	3	n ½	14 8
877	Fulkinson, Mathias, t.	5	pt	13 14	700	Topham, Wm., f. s.	3	n ½	14 8
869	Groat, James, t.	5	s pt	13 14	701	Topham, Washington, f. s.	3	n ½	14 8
871	Gurtridge, James, t.	5	s e pt	13 14	858	Tooley, W. S., o.	5	s ½	17 14
646	Hartle, George, o.	2	n ½	14 8	706	Vincent, Wm., t.	3	pt	13 8
647	Hartle, Wm., f. s.	2	n ½	14 8					

Lot. P. O.  
n w ½ 24 15  
s e pt 19 14  
pt 24 17

s w pt 24 15  
s w pt 24 15  
s w pt 24 15  
pt 19 11  
pt 19 11  
w ½ 22 17  
pt 24 17  
pt 24 17  
pt 24 17  
pt 24 17

w pt 19 11  
n pt 20 11

Lot. P. O.  
s ½ 21 15  
pt 24 10  
pt 24

w ½ 24 17

pt 24 17

Lot. P. O.  
pt 24 17  
pt 24 17  
19 11  
pt 19 14  
pt 24 17

NORTH DORCHESTER VOTERS' LIST.

No. on Roll.	Name.	Con.	Lot.	P. O.	No. on Roll.	Name.	Con.	Lot.	P. O.
653 j	Wallace, Cornelius, t.....	2	n	pt 16 2	857	Yokam, Jesse, t.....	5	n	pt 16 11
681 j	Watcher, Wm., o.....	3	w	pt 18 11	1008 j	York, Wm., o.....	6	n	pt 15 14
795	Ward, Peter, o.....	4	n	pt 18 11	1009 j	York, Dennis, f. s.....	6	n	pt 15 14
796 j	Ward, Jefferson, t.....	4	n	pt 18 11					
1019	Watt, Geo. R., t.....	6	n	w pt 18 11					

PART SECOND.

Persons entitled to vote at Municipal Elections only.

690	Manning, Mrs., o.....	3	n	pt 16 8	875	Pyatt, Mrs., o.....	5	n	pt 13 14
800	McMurray, Mrs., o.....	4	pt	18 11					
873	McKee, Mrs., o.....	5	n	w pt 13 14	878	Wallace, Mrs., o.....	5	n	pt 13 14
1005	McVicar, John, o.....	6	n	pt 13					

PART THIRD.

Persons entitled to vote at the Elections of the Legislative Assembly only.

1076	Brodie, John, w. e.....	3		18 11	790	McCallum, Peter, jr., w. e. 4			15 11
683	Deo, Charles, w. e.....	3		pt 18 11	708	Porter, Freeman, h.....	3		pt 13 8
1006	Garton, Edward, h.....	6		pt 13 14	872	Simpson, John A., h.....	5		pt 13 14
801	Hunter, John, h.....	4		pt 18 11	657	Watson, Robert, h.....	2		pt 16 2

Polling Sub-Division No. 7.

Comprising Lots Nos. 7 to 12, both inclusive, in Concessions Nos. 2, 3, 4, 5, and 6, South of the River Thames.

PART FIRST.

List of Persons entitled to vote at both Municipal Elections and Elections to the Legislative Assembly.

No. on Roll.	Name.	Con.	Lot.	P. O.	No. on Roll.	Name.	Con.	Lot.	P. O.
614	Allen, Peter, o.....	2	n	e pt 8 9	729	Cornish, Thomas J., o.....	3	e	pt 7 13
615 j	Allen, Geo. H., f. s.....	2	n	e pt 8 9	730 j	Cornish, Martin F., f. s. 3		e	pt 7 13
621 j	Atkins, Isaac, t.....	2	n	w pt 9 8	781 j	Cornish, John W., o.....	4	n	e pt 8 13
629	Amoss, Thomas, o.....	2	s	w pt 11 8	982 j	Conkrite, Albert, t.....	6	pt	7 16
630 j	Amoss, Wm., o.....	2	s	w pt 11 8	983 j	Conkrite, Wm., t.....	6	pt	7 16
785	Anderson, Alex., t.....	4	s	pt 9 14	1002	Calhoun, John, t.....	6	pt	12 14
989 j	Adams, Samuel, o.....	6	n	w pt 12 14					
617 j	Barr S., o., and other lands 2		s	pt 8 8	632 j	Dakins, Wm., o.....	2	n	pt 12 8
618	Barr, John, f. s.....	2	s	pt 8 8	721	Demaray, Sammel, sen., o. 3		s	pt 10 8
888	Barrons, Henry, o.....	5	n	e pt 12 14	722 j	Demaray, Samuel, jun., o. 3		s	pt 10 8
906	Barr, Robert, o.....	5	s	pt 9 14					
907	Bowen, Wm. H., o.....	5	n	w pt 9 14	728	Flemming, George, o.....	3	w	pt 7 13
993	Barr, Allen, o.....	6	n	w pt 12 14	775	Frank, Joseph, o.....	4	s	pt 7 14
992	Bowen, James, t.....	6	w	pt 10 14	883	Frost, Wm., o.....	5	pt	12 14
533	Connor, Thos., t.....	2	n	w pt 10 8	896 j	Ferguson, Colon, o.....	5	n	w pt 10 14
011	Cornish, Thos. J. S., o. 2		n	pt s pt 7 8	911	Falls, Wesley, o.....	5	s	w pt 8 14
616	Clifford, Thomas, o.....	2	n	w pt 8 9	912	Falls, Wm., o.....	5	s	e pt 8 14
622	Chilton, Thomas, t.....	2	n	e pt 10 8	984	Fitzpatrick, Hugh, o.....	6	n	w pt 8 14
					985	Falls, James, o.....	6	n	e pt 8 14
					987	Falls, Andrew, o.....	6		9 14

NORTH DORCHESTER VOTERS' LIST.

No. on Roll.	Name.	Con.	Lot.	P. O.	No. on Roll.	Name.	Con.	Lot.	P. O.
988	Falls, Geo. W., o.....	6		9 14	712	Moaks, John, o.....	3	n w pt	12 8
991	Ferguson, Daniel, o.....	6	e	10 14	781	Morris, Wm. N., o.....	4	s pt n	12 14
1001	Facey, Robert, o.....	6		pt 12 14					
827	Gibson, Geo., o.....	2	n w	10 8	886	Orser, Jeremiah, o.....	5		pt 12 14
828	Gibson, John, t.....	2	n w	10 8	855	Pyott, Wm., t.....	2	w pt n	12 8
723	Gee, James, o.....	3	w	9 8	718	Plaxton, James, t.....	3		pt 12 8
724	Gee, George, t.....	3	e	9 8	787	Pyott, James, o.....	4	s e	10 14
725	Gee, Fredrick, t.....	3	e	9 8	884	Procunier, Mackenzie, t.....	5		pt 12 14
891	Grice, Geo., t.....	5	s w pt	12 14	885	Pearson, Thomas, t.....	5		pt 12 14
994	Grice, George, t.....	6		11 14					
994	Grice, Zepheniah, t.....	6		11 14	613	Rogerson, Wm., o.....	2	s e	pt 7 8
610	Johnston, Henry, o.....	2	n	7 9	780	Rodway, Thomas, o.....	4	n e	pt 11 14
779	Jenkins, John, sen., o....	4	n	pt 7 13	897	Rowse, John, t.....	5	s	11 14
780	Jenkins, John, jun., o....	4	n	pt 7 13					
894	Jackson, James, o.....	5	n	11 14	626	Scott, Wm., o.....	2	s w	10 8
895	Jackson, Alonza, o.....	5	n	11 14	704	Spence, Nelson, o.....	2	s e	pt 11 8
913	Johnston, Charles, o.....	5	w	pt 7 14	778	Saddler, Wm., o.....	4	s w	8 14
914	Johnston, Wm., o.....	5	e pt w	7 14	782	Smith, Wm., o.....	4	n	9 14
996	Johnston, Wm., o.....	6	n	pt 12 14	783	Smith, James, o.....	4	n w	8 14
710	Kelso, James, o.....	3		pt 12 8	789	Scott, Thomas, o.....	4	n w	10 14
728	Knott, John, t.....	3	n	8 8	789	Sadler, John J., o.....	4	n e	11 8
786	Knott, Thomas, t.....	4	e	10 14	900	Sharp, Thomas, o.....	5	n e	pt 10 14
899	Kingswell, Philip, t.....	5		pt 10 14	901	Sharp, Benjamin, f. s.....	5	n e	pt 10 14
980	Keeslor, Jacob, o.....	6	s	pt 8 16	909	Sadler, Thomas, o.....	5	n	8 14
					909	Sadler, Robert, f. s.....	5	n	8 14
					910	Sadler, Clarkson, f. s.....	5	n	8 14
					904	Smith, Enoch, o.....	5	s e	pt 10 14
714	Lane, Thomas, o.....	3	n	pt 12 8	998	Thomas, Richard, o.....	6	n	pt 12 14
717	Lane, Reuben, o.....	3	s	11 8					
889	Lavens, Francis, o.....	5		pt 12 14	718	Venning, Richard, o.....	3	n	10 8
903	Law, Alex., t.....	5	s w	pt 10 14	719	Venning, John, f. s.....	3	n	10 8
915	Lucas, Daniel, o.....	5	w	pt e 7 14	720	Venning, Geo., f. s.....	3	n	10 8
980	Laur, George, o.....	6	n	pt 7 16	727	Venning, John, o.....	3	s	8 8
1000	Lewis, Edwin, o.....	6	n w	pt 12 14					
636	Masterman, George, t....	2	n w	pt 12 8	882	White, Charles, o.....	5		pt 12 14
709	Moir, James, o.....	3		pt 12 8					
711	Moaks, James, o.....	3	n w	pt 12 8	733	York, Wm. S., o.....	4	s	12 14

PART SECOND:

Persons entitled to vote at Municipal Elections only.

888	Barr, Mrs., o.....	5		pt 12 14	631	Manning, John G., o.....	2	e	pt 11 17
					887	Morton, Mrs., o.....	5		pt 12 4
781	Crisp, Wm. T., o.....	4	s	9 10					
997	Dundass, Mrs., o.....	6	n	pt 12 14	981	McCradle, Wilson, o.....	6		pt 7 23
					881	McMillan, Miss, o.....	5		pt 12 10
890	Evans, John, o.....	5	s w	pt 12 17	619	Russell, Mrs., o.....	2	n e	9 8
892	Evans, Mrs., o.....	5	n w	pt 12 14					
620	Graham, Wm., o.....	2	w	pt 9 4	902	York, Stephen, o.....	5	s w	pt 10 14

## NORTH DORCHESTER VOTERS' LIST.

## PART THIRD.

Persons entitled to vote at the Elections of the Legislative Assembly.

No. on Roll.	Name.	Con.	Lot.	P. O.	No. on Roll.	Name.	Con.	Lot.	P. O.
784	Abbott, Philip, w. e.....	4	s	pt 12 14	637	Gilbert, Joseph, h.....	2	pt	12 8
989	Bunkle, Wm., w e.....	6		pt 9 14	782	Morris, Samuel J., w. e..	4	c	pt 12 14
990	Connor, Thomas, w. e....	6		pt 9 14	715	Raney, Robert, w. e.....	2		12 8
905	Doan, Thomas, w. e.....	5		10 14	633	Topham, John H., h.....	2	pt	12 8
918	Frank, Walker, h.....	5		pt 7 14	777	Taylor, David, w. e.....	4		7 14
1003	Facey, Joseph, w. e.....	6		12 14	716	Walker, Robert, h.....			12 8

## Polling Sub-Division No. 8.

Comprising Lots A and B, Nos. 1 to 6, both inclusive, in Concessions Nos. 2, 3, 4, 5, and 6, South of the River Thames.

## PART FIRST.

Persons entitled to vote at both Municipal Elections and Elections to the Legislative Assembly.

No. on Roll.	Name.	Con.	Lot.	P. O.	No. on Roll.	Name.	Con.	Lot.	P. O.
608	Allison, Wm., o.....	2	e	½ 6 9	602	George, John, f. s.....	2	s	pt 4 13
731	Atkinson, Thomas, o....	3	n	pt 5 13	603	George, Charles, f. s.....	2	s	pt 4 13
959	Andrews, John H., o....	6	s	pt 3 16	929	Goble, Daniel, o.....	5	s	½ 4 16
970	Andrew, Philip, o.....	6	s	pt 4 16	935	Groat, Daniel, o.....	5	s	w ½ 2 16
606	Brady, John, o.....	2	s	w pt 5 13	936	Goff, Abraham, t.....	5	pt	A & B 13
607	Brady, Norman, f. s....	2	s	w pt 5 13	587	Huntly, Arthur, t.....	2	pt	A & B 9
943	Bowey, John, o.....	6	w	½ A 16	747	Howe, John W., q.....	3	n	pt 1 13
944	Bowey, George, o.....	6	w	½ A 16	748	Howe, Robert J., f. s....	3	n	pt 1 13
596	Craik, James, o.....	2	s	w pt n ½ 3 9	749	Howe, Charles, f. s.....	3	n	pt 1 13
605	Collins, John, t.....	2		pt 4 9	752	Hicks, John, t.....	3	n	pt B 13
765	Clement, Daniel, o.....	4	n	½ 3 16	787	Hopkins, Horace P., o..	4	pt	A 13
928	Cook, Silas, o.....	5	s	pt n ½ 4 16	758	Hopkins, Frank B., f. s..	4	pt	A 13
956	Cook, Benjamin, t.....	6	s	w pt 3 16	973	Herron, Henry, o.....	6	s	pt 4 16
979	Cornwell, Mr., t.....	6	w	½ 6 16	926	Johnson, James, o.....	5	n	e pt 4
592	Dundass, Richard, t.....	2	e	pt 1 9	936	Johnson, John, o.....	5	s	e ½ 2 16
949	Dafoe, Edward, o.....	6	n	w ½ 2 16	941	Joliffe, James, t.....	6	e	pt A 16
952	Dafoe, John, o.....	6	s	e ½ 2 16	931	Johnson, Wm. H., o.....	6	n	e ½ 3 16
972	Demaray, Richard, o....	6	e	pt 4 16	976	Johnson, Lawrance, o..	6	n	½ 5 16
974	Degroat, Jonathan, o....	6	s	w pt 4 16	957	Kenny, John A., t.....	6*	s	pt 3 16
754	Eyres, Thomas, o.....	3	n	pt A 13	740	Longfield, David, o.....	3	n	w ½ 3 13
755	Eyres, Henry S., f. s....	3	n	pt A 13	741	Longfield, John, o.....	3	s	pt 4 13
743	Flemming, Alex., o.....	3	s	w pt 4 13	930	Lucas, Silas, o.....	5	s	½ 3 16
598	George, Edwin, t.....	2	n	pt 4 9	931	Lucas, John W., f. s....	5	s	½ 3 16
600	George, Henry, o.....	2	s	pt 4 13	936	Longfield, John, o.....	5	n	e ½ 1 13
601	George, Thomas, f. s....	2	s	pt 4 13	598	Marwood, John, o.....	2	s	w ½ 3 13
					767	Morris, John, o.....	4	s	½ 4 13
					769	Morris, Joseph, o.....	4	n	½ 4 13

NORTH DORCHESTER VOTERS' LIST.

No. on Roll.	Name.	Con.	Lot.	P. O.	No. on Roll.	Name.	Con.	Lot.	P. O.
924	Morrison, Hugh, o.....	5	n w pt 4	16	590	Rath, Henry, o.....	2	s e 1/2	3 13
925	Morrison, John, o.....	5	n w pt 4	16	593	Rath, Joseph, o.....	2	n pt 2	9
960	Monett, Wm., o.....	6	s pt 3	16	737	Rossiter, Stephen, o.....	3	n 1/2	6 13
968	Miller, Theodore, o.....	6	s e pt 4	16	770	Rossiter, Wm., o.....	4	n 1/2	5 13
					771	Rossiter, Armon, o.....	4	n 1/2	5 13
					773	Rickard, Wm., o.....	4	s 1/2	6 14
745	McVicar, Duncan, o.....	3		2 13	916	Rickard, Philip, o.....	5	w 1/2	6 14
746	McVicar, Finlay, o.....	3	n e 1/2	3 13	948	Rowe, Wm., o.....	6	s w 1/2	1 16
756	McLachlan, Duncan, o...	3	s pt n	13					
762	McCallach, John, o....	4	s pt 2	13	584	Shannon, Michael, sen., o.	2	e pt A	9
932	McCallum, John, sen., o.	5	n pt s 1/2	3 16	585	Shannon, Michael, jr., f. s.	2	e pt A	9
933	McCallum, John, jun., f. s.	5	n pt s 1/2	3 16	586	Shannon, Thomas, f. s....	2	e pt A	9
950	McClary, Patrick, o.....	6	n w 1/2	2 16	594	Stevens, Stephen, o.....	2	n 1/2	3 9
966	McLaughlin, John, o.....	6	s w pt 3	16	595	Stevens, Edward, o.....	2	n 1/2	3 9
967	McCallum, Angus, o.....	6	s w pt 3	16	732	Steele, John, o.....	3	s w pt 5	13
					733	Steele, Wm., f. s.....	3	s w pt 5	13
750	Noad, Cranawick, o.....	3	s pt 1	13	734	Steele, Alex., f. s.....	3	s w pt 5	13
760	Newell, John R., o.....	4	n pt 2	13	735	Steele, Archie, f. s.....	3	s w pt 5	13
764	Newell, Robert, o.....	4	s w 1/2	2 13	736	Steele, David, f. s.....	3	s w pt 5	13
766	Newell, Wm. G., o.....	4	s 1/2	3 13	759	Smith, James, o.....	4	pt A	13
975	Nigh, Wm. V., o.....	6	s 1/2	5 16	920	Smith, Murray, o.....	5	s 1/2	5 16
					927	Smith, Joseph, o.....	5	pt 4	13
539	Phelps, Othnell, o.....	2	pt A & B	13	969	Smith, Hiram, o.....	6	s e pt 4	16
744	Parsons, Henry, o.....	3	s pt 3	13	971	Smith, George C., o.....	6	n pt 3	16
761	Pike, George, o.....	4	s w 1/2	1 13					
772	Parsons, George, o.....	4	s e pt 5	13	934	Tocker, John, o.....	5	n e pt 2	13
921	Parsons, Thomas, o.....	5	n 1/2	5 16					
922	Parsons, John, f. s.....	5	n 1/2	5 16	763	Wright, James, o.....	4	n 1/2	2 13
923	Parsons, Robert, f. s.....	5	n 1/2	5 16	768	Wright, Robert, t.....	4	s 1/2	4 13
942	Pullin, Robert, t.....	6	s pt A & B	16	937	Whitcraft, Jacob, o.....	5	n w pt 1	13
					953	Whaley, Lyman, o.....	6	s pt 2 & 3	16
588	Robertson, Elijah, t....	2	n w pt s	9	963	Willsie, Henry M., o.....	6	s pt 3	16

PART SECOND.

Persons entitled to vote at Municipal Elections only.

609	Allison, Miss, o.....	2	w 1/2	6 9	738	Kernohan, Wm., o.....	3	s pt 5	10
964	Bettridge, Mrs., o.....	6	s pt 3	16	939	Mara, Daniel, o.....	5	pt A	3
937	Colridge, John, o.....	5	e pt A & B	10	978	Pullin, Richard, o.....	6	s e 1/2	6 16
965	Cook, Mrs., o.....	6	s e pt 3	16					
962	Degroat, Mrs., o.....	6	s pt 3	16	751	Stone, Wm., o.....	3	n pt s	12
					945	Storuck, Mrs., o.....	6	pt A & B	23
940	Jolliffe, Richard, o.....	6	e pt A	16	946	Walker, Mrs., o.....	6	e 1/2	1 16
					947	Walker, Emason, t.....	6	e 1/2	1 16

NORTH DORCHESTER  
MUNICIPALITY

Persons entitled to vote at Legislative Assembly only					Persons entitled to vote at Municipal Elections only				
No. on Roll	Name	Com.	Lot	P. O.	No. on Roll	Name	Com.	Lot	P. O.
742	Brown, Geo. S., w. e.	3	pt 3 16	4 19	774	Sims, Andrew, h.	4	pt 5	
765	Glennal, James, h.	6	pt 3 16		776	Tait, Alexander, w. e.	5	pt 6 16	
877	McIvor, Minard, h.	6	pt 5 16						
753	McVea, Wm., h.	3	pt 4 16		919	Veaning, Wm. Jas., w. e.	5	pt 12 16	
917	Ruckle, James, w. e.	5	pt 6 16		604	Williamson, John, h.	2	pt 5 16	
941	Reid, Wm. M., w. e.	6	pt 3 16		983	Wright, Amos, h.	4	pt 1 16	
Total number of persons qualified to act as Jurors are (580) five hundred and eighty.									

I, D. P. Aylsworth, Clerk of the Municipality of North Dorchester, in the County of Middlesex, do hereby certify that parts one and three of the within list constitutes a correct list for the year 1886, of all persons appearing by the last revised Assessment Roll of the said Municipality to be entitled to vote at elections for members of the Legislative Assembly, and that parts one and two constitute a correct list for the said year, of all persons appearing by the said Roll to be entitled to vote at Municipal Elections in said Municipality. And that a copy of such was posted up in my office at North Dorchester, on the 7th day of August; and I hereby call upon all electors to examine the said list, and if any omissions or other errors are perceived therein to take immediate proceedings to have the said errors corrected according to law.

Dated this 5th day of August, 1886.  
**D. P. AYLSWORTH,**  
 Clerk of North Dorchester,  
 Dorchester Station Post Office.

