

**CIHM
Microfiche
Series
(Monographs)**

**ICMH
Collection de
microfiches
(monographies)**



Canadian Institute for Historical Microreproductions / Institut canadien de microreproductions historiques

© 1999

The
cop
ma
the
sig
che



Technical and Bibliographic Notes / Notes techniques et bibliographiques

The Institute has attempted to obtain the best original copy available for filming. Features of this copy which may be bibliographically unique, which may alter any of the images in the reproduction, or which may significantly change the usual method of filming are checked below.

- Coloured covers / Couverture de couleur
- Covers damaged / Couverture endommagée
- Covers restored and/or laminated / Couverture restaurée et/ou pelliculée
- Cover title missing / Le titre de couverture manque
- Coloured maps / Cartes géographiques en couleur
- Coloured ink (i.e. other than blue or black) / Encre de couleur (i.e. autre que bleue ou noire)
- Coloured plates and/or illustrations / Planches et/ou illustrations en couleur
- Bound with other material / Relié avec d'autres documents
- Only edition available / Seule édition disponible
- Tight binding may cause shadows or distortion along interior margin / La reliure serrée peut causer de l'ombre ou de la distorsion le long de la marge intérieure.
- Blank leaves added during restorations may appear within the text. Whenever possible, these have been omitted from filming / Il se peut que certaines pages blanches ajoutées lors d'une restauration apparaissent dans le texte, mais, lorsque cela était possible, ces pages n'ont pas été filmées.

- Additional comments / Commentaires supplémentaires:

There are some creases in the middle of the pages.
 Copy has manuscript annotations.
 Il y a des plis dans le milieu des pages.
 Cette copie a des annotations manuscrites.

L'Institut a microfilmé le meilleur exemplaire qu'il lui a été possible de se procurer. Les détails de cet exemplaire qui sont peut-être uniques du point de vue bibliographique, qui peuvent modifier une image reproduite, ou qui peuvent exiger une modification dans la méthode normale de filmage sont indiqués ci-dessous.

- Coloured pages / Pages de couleur
- Pages damaged / Pages endommagées
- Pages restored and/or laminated / Pages restaurées et/ou pelliculées
- Pages discoloured, stained or foxed / Pages décolorées, tachetées ou piquées
- Pages detached / Pages détachées
- Showthrough / Transparence
- Quality of print varies / Qualité inégale de l'impression
- Includes supplementary material / Comprend du matériel supplémentaire
- Pages wholly or partially obscured by errata slips, tissues, etc., have been refilmed to ensure the best possible image / Les pages totalement ou partiellement obscurcies par un feuillet d'errata, une pelure, etc., ont été filmées à nouveau de façon à obtenir la meilleure image possible.
- Opposing pages with varying colouration or discolourations are filmed twice to ensure the best possible image / Les pages s'opposant ayant des colorations variables ou des décolorations sont filmées deux fois afin d'obtenir la meilleure image possible.

This item is filmed at the reduction ratio checked below /
 Ce document est filmé au taux de réduction indiqué ci-dessous.

	10x		14x		18x		22x		26x		30x	
							<input checked="" type="checkbox"/>					
	12x		16x		20x				24x		28x	32x

The copy filmed here has been reproduced thanks to the generosity of:

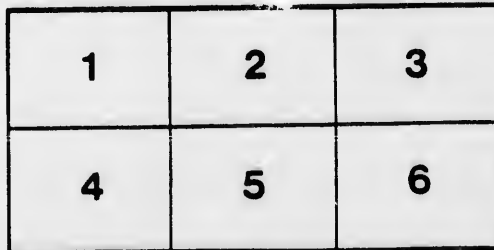
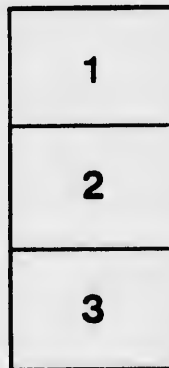
Art Gallery of Ontario
Edward P. Taylor Research Library and Archives

The images appearing here are the best quality possible considering the condition and legibility of the original copy and in keeping with the filming contract specifications.

Original copies in printed paper covers are filmed beginning with the front cover and ending on the last page with a printed or illustrated impression, or the back cover when appropriate. All other original copies are filmed beginning on the first page with a printed or illustrated impression, and ending on the last page with a printed or illustrated impression.

The last recorded frame on each microfiche shall contain the symbol \rightarrow (meaning "CONTINUED"), or the symbol ∇ (meaning "END"), whichever applies.

Maps, plates, charts, etc., may be filmed at different reduction ratios. Those too large to be entirely included in one exposure are filmed beginning in the upper left hand corner, left to right and top to bottom, as many frames as required. The following diagrams illustrate the method:



L'exemplaire filmé fut reproduit grâce à la générosité de:

Musée des beaux-arts de l'Ontario
Bibliothèque de recherche et Archives
Edward P. Taylor

Les images suivantes ont été reproduites avec le plus grand soin, compte tenu de la condition et de la netteté de l'exemplaire filmé, et en conformité avec les conditions du contrat de filmage.

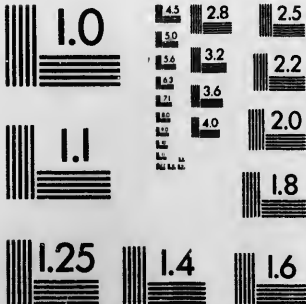
Les exemplaires originaux dont la couverture en papier est imprimée sont filmés en commençant par le premier plat et en terminant soit par la dernière page qui comporte une empreinte d'impression ou d'illustration, soit par le second plat, selon le cas. Tous les autres exemplaires originaux sont filmés en commençant par la première page qui comporte une empreinte d'impression ou d'illustration et en terminant par la dernière page qui comporte une telle empreinte.

Un des symboles suivants apparaîtra sur la dernière image de chaque microfiche, selon le cas: le symbole \rightarrow signifie "A SUIVRE", le symbole ∇ signifie "FIN".

Les cartes, planches, tableaux, etc., peuvent être filmés à des taux de réduction différents. Lorsque le document est trop grand pour être reproduit en un seul cliché, il est filmé à partir de l'angle supérieur gauche, de gauche à droite, et de haut en bas, en prenant le nombre d'images nécessaire. Les diagrammes suivants illustrent la méthode.

MICROCOPY RESOLUTION TEST CHART

(ANSI and ISO TEST CHART No. 2)



APPLIED IMAGE Inc

1653 East Main Street
Rochester, New York 14609 USA
(716) 482 - 0300 - Phone
(716) 288 - 5989 - Fax

English

ANNUAL SALE

CATALOGUE

OF

HIGH-CLASS

PAINTINGS

IN

OIL AND WATER COLORS

BY

BRITISH ARTISTS.

AT THE

FRASER INSTITUTE HALL,

(CORNER UNIVERSITY AND DORCHESTER STREETS)

FRIDAY & SATURDAY,

DECEMBER 10 AND 11,

AT 7.30 O'CLOCK EACH EVENING,

M. HICKS & CO.,

AUCTIONEERS.



Presented
to the Library of the
Art Gallery of Ontario
by

A

Boyd Estate

John Aborn, R.I.
J. Aumonier, I.P.O.
A. W. Ayling, R.I.
W. Follen Bishop, R.I.
C. Brooke Brand, R.I.
David Cox, R.I.
J. T. Dunning, I.P.O.
Walter Field, R.I.
Peter Ghent, R.I.
Angelo Giallina (Count.), R.I.
Jas. E. Grace, R.B.A.
Parker Hagarty, R.C.A.
J. H. Hawthorne, R.I.
Claude Hayes, I.P.O., R.I.
Edwin Hayes, R.H.A., I.P.O., R.I.
E. Holmes, R.B.A.
Arthur Hopkins, R.W.S.



Ernest Parton, I.P.O.
J. L. Pickering, I.P.O., R.I.
Octavus Rickatson, R.B.A.
F. Stuart Richardson, R.S.S.
Trythall Rowe, R.B.A.
Charles Stuart, R.I.
G. S. Walters, R.B.A.
A. W. Weedon, R.I., R.B.A.

R.I.
R.B.A., R.I.
I.P.O., R.I.

R.B.A.
R.B.A.
A.A.

KEY.

- R. I. —Royal Institute of Painters in Water Colors.
I. P. O.—Institute of Painters in Oil Colors.
R. B.A.—Royal Society of British Artists.
R.H.A.—Royal Hibernian Academy of Arts.
R.W.S.—Royal Water Color Society.
R. S. S.—Royal Scottish Society of Arts.
L. A.A.—Liverpool Academy of Art.
B. A. —Bristol Academy.
L. A. C.—London Art Club.

ARTISTS REPRESENTED.

John Aborn, R.B.A.	Thomas Huson, R.I.
J. Aumonier, I.P.O., R.I.	Yeend King, I.P.O., R.B.A., R.I.
A. W. Ayling, R.C.A.	G. Sheridan Knowles, I.P.O., R.I.
W. Follen Bishop, R.B.A.	J. Knowles (Miss)
C. Brooke Branwhite, B.A.	M. P. Lindner.
David Cox.	Jas. Macculloch, R.B.A.
J. T. Dunning, L.A.C.	J. M. MacIntosh, R.B.A.
Walter Field, R.W.S.	R. T. Minshull, L.A.A.
Peter Ghent, R.C.A.	W. E. Norton.
Angelo Giallina (Count.)	Ernest Parton, I.P.O.
Jas. E. Grace, R.B.A.	J. L. Pickering, I.P.O., R.I.
Parker Hagarty, R.C.A.	Octavus Rickatson, R.B.A.
J. H. Hawthorne.	F. Stuart Richardson, R.S.S.
Claude Hayes, I.P.O., R.I.	Trythall Rowe, R.B.A.
Edwin Hayes, R.H.A., I.P.O., R.I.	Charles Stuart.
E. Holmes, R.B.A.	G. S. Walters, R.B.A.
Arthur Hopkins, R.W.S.	A. W. Weedon, R.I., R.B.A.

KEY.

R. I. —Royal Institute of Painters in Water Colors.
I. P. O.—Institute of Painters in Oil Colors.
R. B.A.—Royal Society of British Artists.
R.H.A.—Royal Hibernian Academy of Arts.
R.W.S.—Royal Water Color Society.
R. S. S.—Royal Scottish Society of Arts.
L. A. A.—Liverpool Academy of Art.
B. A. —Bristol Academy.
L. A. C.—London Art Club.

CATALOGUE
OF
HIGH CLASS PICTURES
BY BRITISH ARTISTS.



EXHIBITION DAYS:

On view at the Fraser Institute Hall,

WEDNESDAY, December 8th,
from 10 a.m. to 10 p.m.

THURSDAY, December 9th,
from 10 a.m. to 10 p.m.

FRIDAY, December 10th,
from 10 a.m. to 5 p.m.

SALE DAYS:

The entire collection will be sold by public auction

FRIDAY AND SATURDAY,
December 10th and 11th,

AT 7.30 O'CLOCK EACH EVENING.

M. HICKS & CO.,
Auctioneers.

Please keep this Catalogue for use at sale.

Remarks.



In presenting our annual catalogue of paintings by English Artists, we beg to announce that the pictures to be offered at public competition are the genuine original works and the absolute property of the Artists represented.

The opportunity offered by this sale to obtain fine examples of the English School of paintings by masters whose works are continually advancing in the esteem of Art Connoisseurs, we hope will be abundantly appreciated.

The copyright of all works in the collection is reserved to the respective artists unless arrangements to the contrary be made.

Please keep Catalogue for use at sale, as the issue is limited.

Hoping to have the honor of your patronage at the Exhibition and Sale,

We are,

Yours respectfully,

M. HICKS & CO.

❁❁CATALOGUE❁❁

FIRST DAY'S SALE.

Water Colors.

O. RICKATSON, R.B.A.

- 1 A Rustic Bridge
- 2 Evening at Burnham Beeches

R. T. MINSHULL, L.A.A.

- 3 A Moorland Farm
- 4 A Stream from the Hills

J. M. MacINTOSH, R.B.A.

- 5 The Pasture Stream

CLAUDE HAYES, I.P.O., R.I.

- 6 Moonlight
- 7 Dunwich Suffolk

G. S. WALTERS, R.B.A.

- 8 Off the Channel Islands
9 At Anchor

JOHN ABORN, R.B.A.

- 10 A Sheep Pasture

C. BROOKE BRANWHITE.

- 11 On the Grampion Hills, Scotland

A. W. WEEDON, R.I., R.B.A.

- 12 Coast of Arran
13 Hythe Common, Kent

EDWIN HAYES, R.H.A., I.P.O., R.I.

- 14 Entrance to Falmouth Harbour

G. D. HISCOX.

- 15 Stoke Pogis Church

JAMES MACCULLOCH, R.B.A.

- 16 Ben Nevis from River Lochy
17 Ben Cruachan from the Hills

J. KNOWLES (MISS).

- 18 Blossoms and Nest

Oil Paintings.

De FLEURY.

- 19 Study of Rocks

A. HULK.

- 20 Boats on the Maas
21 Boats in a Calm, Dordrecht

NILBS.

- 22 On the Zuider Zee

C. BROOKE BRANWHITE.

- 23 On the Beach at Hastings

THOMAS HUSON, R.I.

- 24 Kirkstone Pass

J. H. HAWTHORN,

- 25 On the Thames

WALTER FIELD, R.W.S.

- 26 Old English Farmyard

PARKER HOGARTY, R.C.A.

- 27 The Lady of the Lake
28 An Old Gravel Pit

JOHN ABORN, R.B.A.

- 29 Gorse and Heather

G. D. HISCOX.

- 30 Winter in Burnham Beeches

JAMES E. GRACE, R.B.A.

- 31 A Summer Landscape

J. M. MacINTOSH, R.B.A.

- 32 Breezy Weather

ERNEST PARTON, I.P.O.

- 33 Evening at Newbury

CHARLES STUART.

- 34 Sunset in a Deer Forest, Perthshire
35 A Scottish Deer Forest

W. E. NORTON.

- 36 Shipping on the Thames

Water Colors.

ANGELO GIALLINA (COUNT).

- 37 Acro Corinth, Evening
38 Palio Castriza
39 Fishing Boats, Corfu

A. W. AYLING, R.C.A.

- 40 Harvest Gathering

CLAUDE HAYES, I.P.O., R.I.

- 41 Sheep Feeding, Frosty Morning
42 Early Morning

C. BROOKE BRANWHITE.

- 43 Redcliffe Church, Bristol Harbour from
whence Cabot sailed, 1497

A. W. WEEDON, R.I, R.B.A.

- 44 Changing Pasture
45 Tittleworth Common, Evening

F. STUART RICHARDSON, R.S.S.

- 46 Market day in the Low Country

F. J. KNOWLES.

- 47 Morning Frost
Exhibited at the Royal Institute.

EDWIN HAYES, R.H.A., I.P.O., R.I.

- 48 Vessels Hove to for Pilot

JAMES MACCULLOCH, R.B.A.

- 49 Loch Linhue from Appin
50 Fisherman's Hut, Loch Carran

R. T. MINSHULL, L.A.A.

- 51 A Welsh River

OCTAVUS RICKATSON, R.B.A.

- 52 Harvest Time

Oil Paintings.

J. L. PICKERING, I.P.O.

- 53 On the Ouse
54 A Bedford Pasture

YEEND KING, R.I., R.B.A., I.P.O.

- 55 Lock at Woolhampton

M. P. LINDNER.

- 56 The Coast of Wales

THOMS HUSON, R.I.

- 57 Glasmere Church

CLAUDE HAYES, I.P.O., R.I.

- 58 Sheep Feeding, Frosty Morning

F. STEWART RICHARDSON.

- 59 A West Coast Haven

ARTHUR HOPKINS, R.W.S.

- ✓ 60 All Hands at the Capstan
Exhibited at the Royal Academy.

E. HOLMES, R.B.A. (deceased.)

61 Roadside Gossip

PARKER HAGARTY, R.C.A.

62 The Pool on the Common

JOHN ABORN, S.W.A.S.

63 The Passing of Summer, North Wales

J. AUMONIER, I.P.O. R.I.

64 Belluno, Venetia

JAMES E. GRACE, R.B.A.

65 Autumn Twilight

66 Parting Day

Exhibited at the Royal Institute.

OCTAVUS RICKATSON, R.B.A.

67 November Morning

Exhibited at the Royal Academy.

CHARLES STUART.

68 Bonny Scotland, Land of Heather *Saw it at Toronto*
Exhibited at the Royal Academy.

69 Clouds and Sunshine

W. E. NORTON.

70 Salmon Fishing, North Devon

A. W. WEEDON, R.I., R.B.A.

71 Evening Shadows

SECOND DAY'S SALE.

Water Colors.

DAVID COX.

72 An Old Windmill

73 Evening Glow

TRYTHAL ROWE, R.B.A.

74 A Yorkshire Meadow

75 Canal at Newbury

G. S. WALTERS, R.B.A.

76 After Sundown

77 An Iceberg

78 Showery Weather

C. BROOKE BRANWHITE, R.B.A.

79 Minehead, Somersetshire

JAMES E. GRACE, R.B.A.

80 The Old Willow Tree

81 Near Christchurch

CLAUDE HAYES, I.P.O., R.I.

- 82 On the Norfolk Broads
83 Study of Head

R. T. MINSHULL, L.A.A.

- 84 Crossing the Moor
85 A Summer Day

O. RICKATSON, R.B.A.

- 86 A Dorsetshire Farm
87 Early Autumn, Suffolk
88 A Quiet Corner

CHARLES STUART.

- 89 A Battle Royal
90 Stormy Weather

A. W. WEEDON, R.I., R.B.A.

- 91 Mill at Dordrecht, Holland
92 Mitcham Common, Surrey
93 Aylesford, Kent

J. MACCULLOCH.

- 94 The River Dochart, Killan
95 Elan Vow, Loch Lomond

Oil Paintings.

WALTER FIELD.

- 96 A Glimpse at the South Downs

THOMAS HUSON, R.I.

- 97 Rydal Waters
98 Dungeon Ghyll

G. SHERIDAN KNOWLES.

- 99 The Last Minstrel
Exhibited at the Royal Academy.

J. L. PICKERING, I.P.O.

- 100 February
Exhibited at the Royal Academy.

EDWIN HAYES, R.H.A., I.P.O., R.I.

- 101 Entrance to Genoa
Exhibited at the Royal Academy.

PARKER HAGARTY, R.C.A.

- 102 Sonning Vale on the Thames
Exhibited at the Royal Academy.

J. T. DUNNING, L.A.C.

103 "The Peris"

M. P. LINDNER.

104 Seascape

W. E. NORTON.

105 Low Tide, Appledore

J. M. MacINTOSH, R.B.A.

106 Autumn

Exhibited at the Royal Academy.

F. STUART RICHARD, R.S.S.

107 Autumn, Evening

PETER GHENT, R.C.A.

108 Hayfield in Wales

CHARLES STUART.

109 Doubtful Weather

110 Borrodale Birches

JAMES E. GRACE, R.B.A.

111 Fringe of the Woods

112 The Pool at Evening

ARTHUR HOPKINS, R.W.S.

113 The Empty Boat at Sea

Exhibited at the Royal Academy. 1889

Water Colors.

CLAUDE HAYES, I.P.O., R.I.

- 114 Stacking Osiers
115 Winter in England

J. M. MacINTOSH, R.B.A.

- 116 On the River Kennett
Exhibited at the Royal Institute, 1897.
117 By the River at Thatcham
118 The River Side

B. T. MINSHULL, L.A.A.

- 119 A Mountain Stream
120 A Moorland Cottage

W. E. NORTON.

- 121 A French Shipping Port

J. MACCULLOCH.

- 122 Head of Loch Lomond

O. RICKATSON, R.B.A.

123 The Old Lock Gate

124 Mid-day

EDWIN HAYES, R.H.A., I.P.O., R.I.

125 Harbour of Genoa, Sunset

126 The Evening of Her Day

127 Fishing Smacks

ANGELO GIALLINA (COUNT).

128 Excavations on the Agora, Athens

129 Filop-apuss Monument, Athens

130 Bas Relief, Theatre of Bacchus

W. FOLLEN BISHOP, R.B.A.

131 Marldon, Essex

A. W. AYLING, R.C.A.

132 Brightmelion, Bethesda

JOHN ABORN, S.W.A.S.

133 In the Forest

134 Among the Wild Flowers

CHARLES STUART

- 135 A Lonely Wanderer

G. S. WALTERS, R.B.A.

- 136 A Clear Evening
137 A Choppy Sea
138 A Stiff Breeze

A. W. WEEDON, R.I., R.B.A.

- 139 Dutch Boats
140 Wooden Bridge, Hampshire

Oil Paintings.

WALTER FIELD.

141 Summer Fields

JAMES E. GRACE, R.B.A.

142 Evening Light

EDWIN HAYES, R.H.A., I.P.O., R.I.

143 Tantallon Castle, Scotland

G. D. HISCOX.

144 Fortress on the Rhine

THOMAS HUSON, R.I.

145 Ravenscraig

YEEND KING, I.P.O., R.B.A., R.I.

146 Springtime

J. M. MacINTOSH, R.B.A.

147 At Thatcham

E. PARTON, I.P.O.

148 Under the Willows

G. SHERIDAN KNOWLES, I.P.O., R.I.

149 Clematis

Exhibited at the Royal Institute.

150 Head of Child

CHARLES STUART.

151 Sunset after Rain

152 A Scotch Moorland

G. S. WALTERS, R.B.A.

153 On the Maas, Holland

