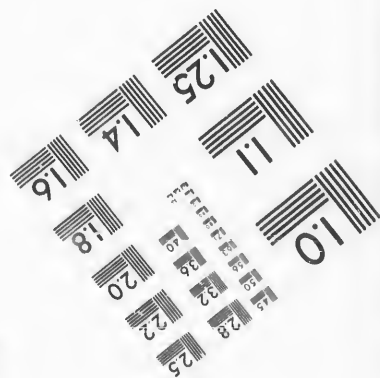
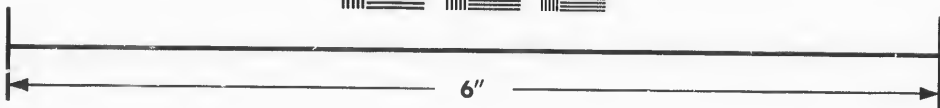
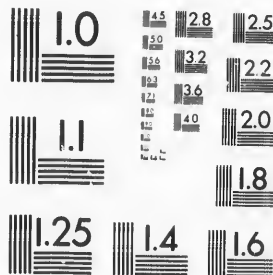


**IMAGE EVALUATION
TEST TARGET (MT-3)**



**Photographic
Sciences
Corporation**

23 WEST MAIN STREET
WEBSTER, N.Y. 14580
(716) 872-4503

1.5 2.8
2.0 3.2
3.6 4.0
4.5 5.0
5.6 6.3
7.0 8.0
9.0 10.0
11.0 12.5
14.0 16.0
18.0 20.0
22.5 25.0

**CIHM/ICMH
Microfiche
Series.**

**CIHM/ICMH
Collection de
microfiches.**



Canadian Institute for Historical Microreproductions / Institut canadien de microreproductions historiques

© 1987

1.0
1.5
2.0
2.5
3.0
3.5
4.0
4.5
5.0
5.5
6.0
6.5
7.0
7.5
8.0
8.5
9.0
9.5
10.0
10.5
11.0
11.5
12.0
12.5
13.0
13.5
14.0
14.5
15.0
15.5
16.0
16.5
17.0
17.5
18.0
18.5
19.0
19.5
20.0
20.5
21.0
21.5
22.0
22.5
23.0
23.5
24.0
24.5
25.0

Technical and Bibliographic Notes/Notes techniques et bibliographiques

The Institute has attempted to obtain the best original copy available for filming. Features of this copy which may be bibliographically unique, which may alter any of the images in the reproduction, or which may significantly change the usual method of filming, are checked below.

L'Institut a microfilmé le meilleur exemplaire qu'il lui a été possible de se procurer. Les détails de cet exemplaire qui sont peut-être uniques du point de vue bibliographique, qui peuvent modifier une image reproduite, ou qui peuvent exiger une modification dans la méthode normale de filmage sont indiqués ci-dessous.

Coloured covers/
Couverture de couleur

Covers damaged/
Couverture endommagée

Covers restored and/or laminated/
Couverture restaurée et/ou pelliculée

Cover title missing/
Le titre de couverture manque

Coloured maps/
Cartes géographiques en couleur

Coloured ink (i.e. other than blue or black)/
Encre de couleur (i.e. autre que bleue ou noire)

Coloured plates and/or illustrations/
Planches et/ou illustrations en couleur

Bound with other material/
Relié avec d'autres documents

Tight binding may cause shadows or distortion
along interior margin/
La reliure serrée peut causer de l'ombre ou de la
distorsion le long de la marge intérieure

Blank leaves added during restoration may
appear within the text. Whenever possible, these
have been omitted from filming/
Il se peut que certaines pages blanches ajoutées
lors d'une restauration apparaissent dans le texte,
mais, lorsque cela était possible, ces pages n'ont
pas été filmées.

Coloured pages/
Pages de couleur

Pages damaged/
Pages endommagées

Pages restored and/or laminated/
Pages restaurées et/ou pelliculées

Pages discoloured, stained or foxed/
Pages décolorées, tachetées ou piquées

Pages detached/
Pages détachées

Showthrough/
Transparence

Quality of print varies/
Qualité inégale de l'impression

Includes supplementary material/
Comprend du matériel supplémentaire

Only edition available/
Seule édition disponible

Pages wholly or partially obscured by errata
slips, tissues, etc., have been refilmed to
ensure the best possible image/
Les pages totalement ou partiellement
obscurcies par un feuillet d'errata, une pelure,
etc., ont été filmées à nouveau de façon à
obtenir la meilleure image possible.

Additional comments:/
Commentaires supplémentaires:

[Printed ephemera] 1 sheet (verso blank)

This item is filmed at the reduction ratio checked below/
Ce document est filmé au taux de réduction indiqué ci-dessous.

10X	14X	18X	22X	26X	30X
<input type="checkbox"/>	<input type="checkbox"/>	<input type="checkbox"/>	<input checked="" type="checkbox"/>	<input type="checkbox"/>	<input type="checkbox"/>
12X	16X	20X	24X	28X	32X

The copy filmed here has been reproduced thanks to the generosity of:

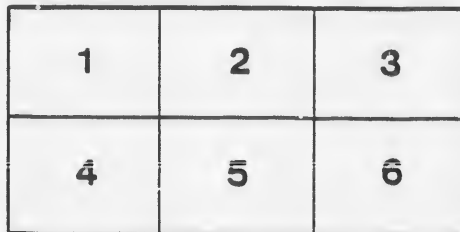
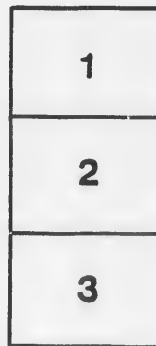
McLennan Library
McGill University
Montreal

The images appearing here are the best quality possible considering the condition and legibility of the original copy and in keeping with the filming contract specifications.

Original copies in printed paper covers are filmed beginning with the front cover and ending on the last page with a printed or illustrated impression, or the back cover when appropriate. All other original copies are filmed beginning on the first page with a printed or illustrated impression, and ending on the last page with a printed or illustrated impression.

The last recorded frame on each microfiche shall contain the symbol \rightarrow (meaning "CONTINUED"), or the symbol ∇ (meaning "END"), whichever applies.

Maps, plates, charts, etc., may be filmed at different reduction ratios. Those too large to be entirely included in one exposure are filmed beginning in the upper left hand corner, left to right and top to bottom, as many frames as required. The following diagrams illustrate the method:



L'exemplaire filmé fut reproduit grâce à la générosité de:

McLennan Library
McGill University
Montreal

Les images suivantes ont été reproduites avec le plus grand soin, compte tenu de la condition et de la netteté de l'exemplaire filmé, et en conformité avec les conditions du contrat de filmage.

Les exemplaires originaux dont la couverture en papier est imprimée sont filmés en commençant par le premier plat et en terminant soit par la dernière page qui comporte une empreinte d'impression ou d'illustration, soit par le second plat, selon le cas. Tous les autres exemplaires originaux sont filmés en commençant par la première page qui comporte une empreinte d'impression ou d'illustration et en terminant par la dernière page qui comporte une telle empreinte.

Un des symboles suivants apparaîtra sur la dernière image de chaque microfiche, selon le cas: le symbole \rightarrow signifie "A SUIVRE", le symbole ∇ signifie "FIN".

Les cartes, planches, tableaux, etc., peuvent être filmés à des taux de réduction différents. Lorsque le document est trop grand pour être reproduit en un seul cliché, il est filmé à partir de l'angle supérieur gauche, de gauche à droite, et de haut en bas, en prenant le nombre d'images nécessaire. Les diagrammes suivants illustrent la méthode.

Not in TPL

At a Meeting of the Trustees of the OTTAWA MECHANICS' INSTITUTE and ATHENÆUM, held on Wednesday, the 3rd October, 1855, it was

RESOLVED---

That this Society do offer Prizes for the best collection of Insects, Reptiles, Crustaceans, Shells, Plants and Minerals, made in all or any of the following Counties: Renfrew, Pontiac, Carleton, Ottawa, Lanark, Prescott, Russell, Leeds, Grenville, Argenteuil and Vaudreuil, the said collections to be sent in on the 1st of October, 1857. The prizes to be as follows:

1. INSECTS, best collection of

Coleoptera	}	Ex. Beetles, Earwigs,	£2 10 0
Hemiptera		Bugs, Locusts, Grass-hoppers, Tree Lice, &c.,	
Lepidoptera	}	Moths, Butterflies, Dragon Flies, May Flies, &c.,	2 10 0
Neuroptera		&c.....	
Hymenoptera	}	Bees, Ants, Flies,	2 10 0
Diptera & Aptera		Centipedes, Fleas, Spiders, &c.,	
2. Reptiles and Crustaceans,

Ex. Snakes, Frogs, Proteus, Crayfish.	2 10 0
&c., &c.,	
3. River and Land Shells, 2 10 0
4. Best named collection of dried specimens of Indigenous Plants, 10 10 0
5. Best collection of Mineralogical specimens, with the name of the locality where found attached, 10 10 0

The successful collections to become the property of the Society. Any of the unsuccessful collections may be acquired by the Society upon paying half the foregoing prices.

Should the best collection under any of the foregoing heads prove palpably inferior, the Trustees reserve the right of refusing the premium.

That the following directions be issued for the guidance of those who compete:

To PRESERVE INSECTS.—Get a box made of White Pine or Spruce, fifteen inches square, and one inch deep. Line it with paper, pasted in. Transfix the insects through the breast with a pin, which drive into the bottom of the box. In the case of such insects as butterflies, moths, beetles, &c., it is necessary to arrange the wings, feet, and feelers in the natural position before they dry. To kill insects speedily, and without impairing their value as specimens, it suffices to touch the mouth with a drop of spirits of turpentine. Insects too small to impale, may be fixed in their places by a solution of gum arabic or common paste. Keep similar insects as much together as possible, and number

them distinctly on the paper underneath, beginning at the upper left hand corner. When the box is filled cover it with a pane of glass, which fix in its place with putty, having previously fastened a small piece of tallow by a pin to the bottom of the box.

Reptiles and Crustaceans are best preserved in the strongest high wines, taking care to cork the bottle closely.

For preserving plants, unsized paper should be used. Books of Botany give the necessary directions for making a Hortus Siccus. The locality where found must be carefully noted.

Mineralogical specimens must be wrapt up separately in paper, and when fragile add cotton wool, as the perfection of the angles and fractures are of great consequence to the scientific. Although the Society do not demand the scientific names, it must not be overlooked that they rigorously require the locality where found to be legibly written and enclosed in the wrapper; writing the locality on a long riband of paper, and rolling it round the specimen, previous to wrapping it, is most secure.

Shells, like Minerals, should be wrapt up separately, and furthermore, require cotton wool in addition in every case, as the edges and hinges often determine specific differences. A label should be rolled around, stating where found, and whether on land, or near, or in a river or brook. Fresh Water Mussels, technically called "Unio," are at present of great scientific interest; and as the specific differences are so trifling, as to be undiscernable except to a student, it is advisable that all specimens found by any competing collector should be preserved and sent in.

The Society, in offering the preceding prizes, do not pretend that they are proffering anything like the money value of the collections solicited, but they desire and hope, that the prizes offered, may be the means of exciting many to embark in the pursuit of science, who otherwise would never have thought of so doing, at the same time, that the Museum of the Society would be enriched by their labors, for the mutual benefit of the inhabitants of the Ottawa country generally.

And be it further Resolved, That one thousand copies of this resolution be printed for circulation among the leading inhabitants of the aforesaid counties.

C. R. CUNNINGHAM, Secretary.

Please show this to those whom it is likely to interest.

