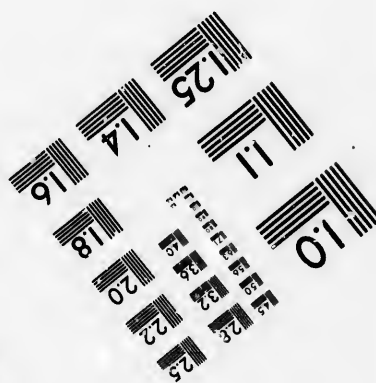
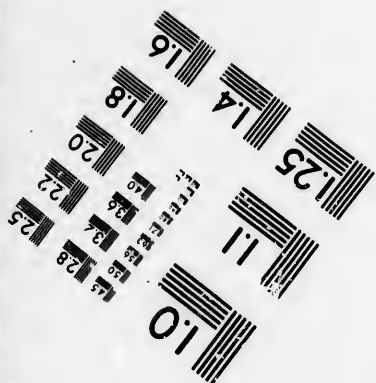
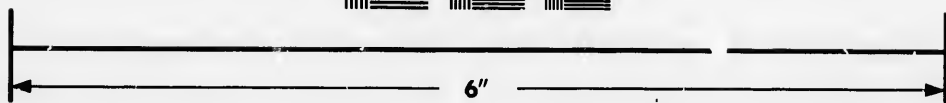
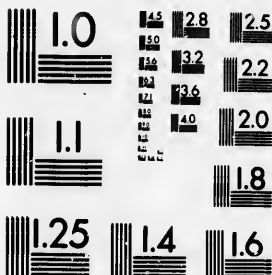


**IMAGE EVALUATION  
TEST TARGET (MT-3)**



**Photographic  
Sciences  
Corporation**

23 WEST MAIN STREET  
WEBSTER, N.Y. 14580  
(716) 872-4503

25  
22  
20  
18

**CIHM/ICMH  
Microfiche  
Series.**

**CIHM/ICMH  
Collection de  
microfiches.**



Canadian Institute for Historical Microreproductions / Institut canadien de microreproductions historiques

10  
51

**© 1986**

Technical and Bibliographic Notes/Notes techniques et bibliographiques

The Institute has attempted to obtain the best original copy available for filming. Features of this copy which may be bibliographically unique, which may alter any of the images in the reproduction, or which may significantly change the usual method of filming, are checked below.

L'institut a microfilmé le meilleur exemplaire qu'il lui a été possible de se procurer. Les détails de cet exemplaire qui sont peut-être uniques du point de vue bibliographique, qui peuvent modifier une image reproduite, ou qui peuvent exiger une modification dans la méthode normale de filmage sont indiqués ci-dessous.

- Coloured covers/  
Couverture de couleur
- Covers damaged/  
Couverture endommagée
- Covers restored and/or laminated/  
Couverture restaurée et/ou pelliculée
- Cover title missing/  
Le titre de couverture manque
- Coloured maps/  
Cartes géographiques en couleur
- Coloured ink (i.e. other than blue or black)/  
Encre de couleur (i.e. autre que bleue ou noire)
- Coloured plates and/or illustrations/  
Planches et/ou illustrations en couleur
- Bound with other material/  
Relié avec d'autres documents
- Tight binding may cause shadows or distortion along interior margin/  
La reliure serrée peut causer de l'ombre ou de la distorsion le long de la marge intérieure
- Blank leaves added during restoration may appear within the text. Whenever possible, these have been omitted from filming/  
Il se peut que certaines pages blanches ajoutées lors d'une restauration apparaissent dans le texte, mais, lorsque cela était possible, ces pages n'ont pas été filmées.
- Additional comments: [Printed ephemera] 1 sheet (verso blank)  
Commentaires supplémentaires:

- Coloured pages/  
Pages de couleur
- Pages damaged/  
Pages endommagées
- Pages restored and/or laminated/  
Pages restaurées et/ou pelliculées
- Pages discoloured, stained or foxed/  
Pages décolorées, tachetées ou piquées
- Pages detached/  
Pages détachées
- Showthrough/  
Transparence
- Quality of print varies/  
Qualité inégale de l'impression
- Includes supplementary material/  
Comprend du matériel supplémentaire
- Only edition available/  
Seule édition disponible
- Pages wholly or partially obscured by errata slips, tissues, etc., have been refilmed to ensure the best possible image/  
Les pages totalement ou partiellement obscurcies par un feuillet d'errata, une pelure, etc., ont été filmées à nouveau de façon à obtenir la meilleure image possible.

This item is filmed at the reduction ratio checked below/  
Ce document est filmé au taux de réduction indiqué ci-dessous.

|     |     |     |     |     |     |     |     |     |     |     |     |
|-----|-----|-----|-----|-----|-----|-----|-----|-----|-----|-----|-----|
| 10X | 12X | 14X | 16X | 18X | 20X | 22X | 24X | 26X | 28X | 30X | 32X |
|     |     |     |     |     |     |     | ✓   |     |     |     |     |

The copy filmed here has been reproduced thanks to the generosity of:

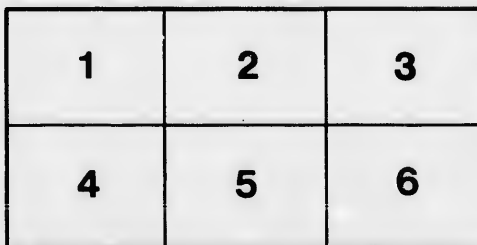
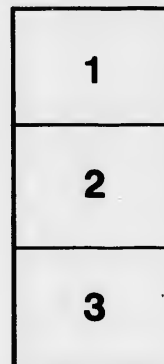
Library of the Public  
Archives of Canada

The images appearing here are the best quality possible considering the condition and legibility of the original copy and in keeping with the filming contract specifications.

Original copies in printed paper covers are filmed beginning with the front cover and ending on the last page with a printed or illustrated impression, or the back cover when appropriate. All other original copies are filmed beginning on the first page with a printed or illustrated impression, and ending on the last page with a printed or illustrated impression.

The last recorded frame on each microfiche shall contain the symbol  $\rightarrow$  (meaning "CONTINUED"), or the symbol  $\nabla$  (meaning "END"), whichever applies.

Maps, plates, charts, etc., may be filmed at different reduction ratios. Those too large to be entirely included in one exposure are filmed beginning in the upper left hand corner, left to right and top to bottom, as many frames as required. The following diagrams illustrate the method:



L'exemplaire filmé fut reproduit grâce à la générosité de:

La bibliothèque des Archives  
publiques du Canada

Les images suivantes ont été reproduites avec le plus grand soin, compte tenu de la condition et de la netteté de l'exemplaire filmé, et en conformité avec les conditions du contrat de filmage.

Les exemplaires originaux dont la couverture en papier est imprimée sont filmés en commençant par le premier plat et en terminant soit par la dernière page qui comporte une empreinte d'impression ou d'illustration, soit par le second plat, selon le cas. Tous les autres exemplaires originaux sont filmés en commençant par la première page qui comporte une empreinte d'impression ou d'illustration et en terminant par la dernière page qui comporte une telle empreinte.

Un des symboles suivants apparaîtra sur la dernière image de chaque microfiche, selon le cas: le symbole  $\rightarrow$  signifie "A SUIVRE", le symbole  $\nabla$  signifie "FIN".

Les cartes, planches, tableaux, etc., peuvent être filmés à des taux de réduction différents. Lorsque le document est trop grand pour être reproduit en un seul cliché, il est filmé à partir de l'angle supérieur gauche, de gauche à droite, et de haut en bas, en prenant le nombre d'images nécessaire. Les diagrammes suivants illustrent la méthode.



# 500 TONS OF WIRE WANTED.

## PROPOSALS ARE INVITED

By the undersigned, on the part of the NIAGARA FALLS INTERNATIONAL BRIDGE COMPANIES, for the construction of the wire cables of the Railroad Suspension Bridge, of 800 feet span, to be erected over the Niagara river, below the Falls, for the delivery of

### **One Million of Pounds of Iron Wire,**

or any portion of it, not less than 100,000 lbs., at the site of the bridge, on the following conditions :

- 1 The wire is to be of No. 10 size, so that 20 feet will weigh exactly one pound.
- 2 The skeins to weigh no less than 18 lbs. An offer for 30 to 40 lbs. will be greatly preferred.
- 3 The wire must be finished with a lime coat, smooth and even, both ends of the same thickness.
- 4 It must be finished in 3 holes, or nearly as hard as spring-wire.
- 5 The iron must have been manufactured of the best quality of charcoal blooms, which will make hard wire of great elasticity, strength, fibre and toughness.
- 6 The blooms must have been manufactured of cold-blast charcoal pig, and not of anthracite pig, nor of hot-blast pig.
- 7 Satisfactory evidence will be required before hand of the quality of the iron, of which the wire is to be drawn.
- 8 The wire must be drawn on blocks of no less than 2 feet diameter.
- 9 It must be put up in bundles of 200 lbs., as near as can be done, without small skeins.
- 10 The wire is to be delivered in five equal portions during the months of May, June, July, August, and September of next year.
- 11 On delivery the wire will be examined and tested in the following manner:—Of every 5 bundles or 1,000 lbs. one skein will be selected, and suspended between two posts 400 feet apart, the one end attached to a capstan, by which it will be gradually hauled on until it breaks. The condition now is, that this wire must not break with a greater deflection than 9 inches, which is equivalent to 1,300 lbs., or 90,000 per superficial inch of solid wire section. If it stands this test, then further examination of that one thousand pounds, in respect to other qualities, will be continued; but if not, it will be rejected and placed at the disposal of the contractor.
- 12 As regards toughness and fibre, each end of a skein will be tested by bending it square over the jaws of a large pair of new and sharp pliers, and bending it back again. The wire must stand this test without the least sign of failure. Its hardness and elasticity will at the same time be examined by bending and swinging, also by hammering, filing and notching the ends, which forms part of the operation of splicing.
- 13 Such lots as have stood the various tests satisfactorily, will then be accepted conditionally, and 80 per cent of its full value will then be paid to the contractor in bankable funds.
- 14 The 20 per cent will be reserved for four months longer. Should in that time, during the construction of the cables, any more defective skeins be discovered, such skeins will be rejected and placed at the contractor's disposal, either broken or whole, oiled or not oiled, in such condition as they happen to be during the progress of the work. The value of such wire, together with the labor expended upon it, will then be deducted of the 20 per cent reserved.
- 15 The undersigned, as the Engineer of the Bridge, will be the sole judge of the above tests; he will stand as an impartial umpire between the contractor and the Bridge Companies, and from his decision there shall be no appeal.
- 16 Proposals for imported wire will also be accepted. One-half or 500,000 lbs. will be used on the Canada side, and may be bonded, if imported by way of New York.
- 17 Proposals will be received until the 1st October next; they are to be directed to the undersigned at Niagara Falls, N. Y., and should be marked on the envelope, "*Proposals for Bridge Wire.*"
- 18 Those contractors, whose proposals are accepted, will be informed of the fact by mail before or on the 10th October next.

**JOHN A. ROEBLING,**

*Engineer of the Niagara Falls Railroad Suspension Bridge.*

NIAGARA FALLS, N. Y., August 5th, 1852.

