

**CIHM
Microfiche
Series
(Monographs)**

**ICMH
Collection de
microfiches
(monographies)**



Canadian Institute for Historical Microreproductions / Institut canadien de microreproductions historiques

© 1996

Technical and Bibliographic Notes / Notes techniques et bibliographiques

The Institute has attempted to obtain the best original copy available for filming. Features of this copy which may be bibliographically unique, which may alter any of the images in the reproduction, or which may significantly change the usual method of filming are checked below.

- Coloured covers / Couverture de couleur
- Covers damaged / Couverture endommagée
- Covers restored and/or laminated / Couverture restaurée et/ou pelliculée
- Cover title missing / Le titre de couverture manque
- Coloured maps / Cartes géographiques en couleur
- Coloured ink (i.e. other than blue or black) / Encre de couleur (i.e. autre que bleue ou noire)
- Coloured plates and/or illustrations / Planches et/ou illustrations en couleur
- Bound with other material / Relié avec d'autres documents
- Only edition available / Seule édition disponible
- Tight binding may cause shadows or distortion along interior margin / La reliure serrée peut causer de l'ombre ou de la distorsion le long de la marge intérieure.
- Blank leaves added during restorations may appear within the text. Whenever possible, these have been omitted from filming / Il se peut que certaines pages blanches ajoutées lors d'une restauration apparaissent dans le texte, mais, lorsque cela était possible, ces pages n'ont pas été filmées.
- Additional comments / Commentaires supplémentaires:

L'Institut a microfilmé le meilleur exemplaire qu'il lui a été possible de se procurer. Les détails de cet exemplaire qui sont peut-être uniques du point de vue bibliographique, qui peuvent modifier une image reproduite, ou qui peuvent exiger une modification dans la méthode normale de filmage sont indiqués ci-dessous.

- Coloured pages / Pages de couleur
- Pages damaged / Pages endommagées
- Pages restored and/or laminated / Pages restaurées et/ou pelliculées
- Pages discoloured, stained or foxed / Pages décolorées, tachetées ou piquées
- Pages detached / Pages détachées
- Showthrough / Transparence
- Quality of print varies / Qualité inégale de l'impression
- Includes supplementary material / Comprend du matériel supplémentaire
- Pages wholly or partially obscured by errata slips, tissues, etc., have been refilmed to ensure the best possible image / Les pages totalement ou partiellement obscurcies par un feuillet d'errata, une pelure, etc., ont été filmées à nouveau de façon à obtenir la meilleure image possible.
- Opposing pages with varying colouration or discolourations are filmed twice to ensure the best possible image / Les pages s'opposant ayant des colorations variables ou des décolorations sont filmées deux fois afin d'obtenir la meilleure image possible.

This item is filmed at the reduction ratio checked below / Ce document est filmé au taux de réduction indiqué ci-dessous.

10x	14x	18x	22x	26x	30x
<input type="checkbox"/>	<input type="checkbox"/>	<input checked="" type="checkbox"/>	<input type="checkbox"/>	<input type="checkbox"/>	<input type="checkbox"/>
12x	16x	20x	24x	28x	32x

The copy filmed here has been reproduced thanks to the generosity of:

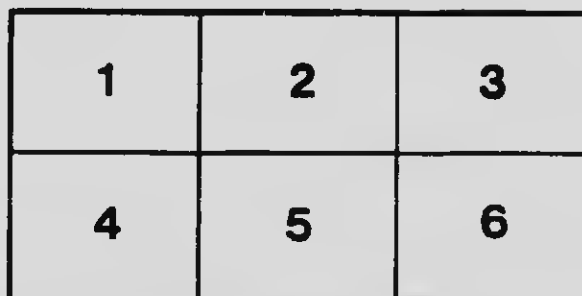
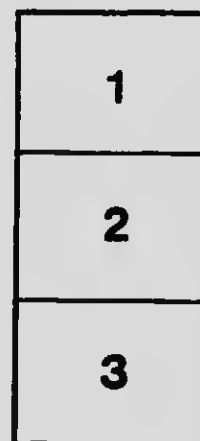
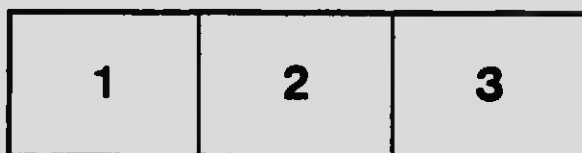
D.B. Weldon Library
University of Western Ontario

The images appearing here are the best quality possible considering the condition and legibility of the original copy and in keeping with the filming contract specifications.

Original copies in printed paper covers are filmed beginning with the front cover and ending on the last page with a printed or illustrated impression, or the back cover when appropriate. All other original copies are filmed beginning on the first page with a printed or illustrated impression, and ending on the last page with a printed or illustrated impression.

The last recorded frame on each microfiche shell contains the symbol \rightarrow (meaning "CONTINUED"), or the symbol ∇ (meaning "END"), whichever applies.

Maps, plates, charts, etc., may be filmed at different reduction ratios. Those too large to be entirely included in one exposure are filmed beginning in the upper left hand corner, left to right and top to bottom, as many frames as required. The following diagrams illustrate the method:



L'exemplaire filmé fut reproduit grâce à la générosité de:

D.B. Weldon Library
University of Western Ontario

Les images suivantes ont été reproduites avec le plus grand soin, compte tenu de la condition et de la netteté de l'exemplaire filmé, et en conformité avec les conditions du contrat de filmage.

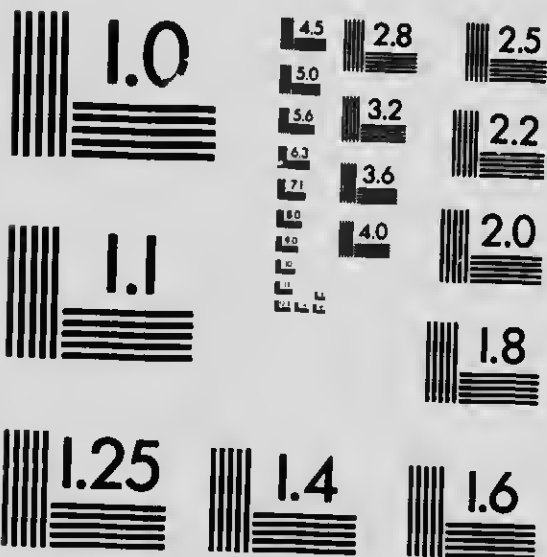
Les exemplaires originaux dont la couverture en papier est imprimée sont filmés en commençant par le premier plat et en terminant soit par la dernière page qui comporte une empreinte d'impression ou d'illustration, soit par le second plat, selon le cas. Tous les autres exemplaires originaux sont filmés en commençant par la première page qui comporte une empreinte d'impression ou d'illustration et en terminant par la dernière page qui comporte une telle empreinte.

Un des symboles suivants apparaîtra sur la dernière image de chaque microfiche, selon le cas: le symbole \rightarrow signifie "A SUIVRE", le symbole ∇ signifie "FIN".

Les cartes, planches, tableaux, etc., peuvent être filmés à des taux de réduction différents. Lorsque le document est trop grand pour être reproduit en un seul cliché, il est filmé à partir de l'angle supérieur gauche, de gauche à droite, et de haut en bas, en prenant le nombre d'images nécessaire. Les diagrammes suivants illustrent la méthode.

MICROCOPY RESOLUTION TEST CHART

(ANSI and ISO TEST CHART No. 2)



APPLIED IMAGE Inc

1653 East Main Street
Rochester, New York 14609 USA
(716) 482 - 0300 - Phone
(716) 288 - 5989 - Fax

Opportunities
in
Ontario

Compliments of

HEYES SYSTEMS

MULTI-COPY WORK

Superior Typewritten Soliciting Letters
in hundreds, thousands or tens
of thousands.

32 CHURCH ST., TORONTO
PHONE MAIN 5076

1102 1. ✓

Opportunities in Ontario 1910



Extracts from
Heaton's Annual

Heaton's Agency, Toronto

Copyright by Ernest Heaton, Toronto

Extracts from Heaton's Annual, which contains similar official information covering every Province in the Dominion. Cloth edition (The Commercial Handbook of Canada) 5/-; Abbreviated paper edition (Opportunities in Canada) 1/-, can be obtained in Great Britain, from the railway book stalls and all booking agents; in Canada from all booksellers, or Heaton's Agency, Toronto.

523815

Opportunities in Ontario

Agriculture

- APPLE GROWING.** According to the Dominion census of 1901, there were in Ontario 9,541,619 apple trees, with a total production of 13,631,246 bushels of fruit. This year was one of comparative failure of the apple crop. The Ontario Bureau of Industries report, in 1906, gives the total trees as 10,201,766, and the production as 31,380,749 bushels. The average for the ten years from 1896 to 1905 was 34,685,101 bushels. At the lowest price paid for merchantable apples on the trees, this represents a yearly value of \$8,671,275. The estimated number of trees to-day is 11,449,943. The province produces 70% of the total crop of apples in Canada. The bulk of the crop is sold within the province. At the same time, Ontario exports more apples to Great Britain than any other province or state on the continent. The shipments this year from the port of Montreal, up to Nov. 26th, were 566,019 barrels. The balance of the shipments go via Portland, Boston, St. John, and these would bring the total up to 1,000,000 barrels, or 3,000,000 bushels. The Western Provinces would take nearly 1,000,000 bushels. These shipments include some of the best of Ontario's fruit, and the average selling price to the consumer would be \$1.25 per bushel. This means a gross return to the province from the export trade alone of \$5,000,000. Where the growers have united to form co-operative shipping associations, the returns to them have been much higher than under the old system of selling in the orchard. For instance, the Norfolk Fruit Growers' Association this year sold over 19,000 barrels at an average price of \$3.00 per barrel, f.o.h. shipping station. At the same time prices to the consumer have not increased, while they have received a better quality of fruit.
- BARLEY.** Formerly grown for malting, now grown for feeding. Area increased from 438,784 acres in 1898, to 734,029 acres in 1909. Yield about 30 bush. per acre.
- BEANS.** Bean growing on a commercial scale is practically confined to Kent and Elgin Counties. Annual crop about

OPPORTUNITIES IN ONTARIO

900,000 hushels. The hulk is marketed at home, surplus in Great Britain, France and West Indies.

BEEKEEPING. The Dominion census of 1901 gives the province a total of 116,403 colonies, but the Ontario Government reports for 1908 reduce this by 33% at least, owing to the heavy losses in 1907, 1908, largely due to carelessness. Of the larger colonies the average loss in winter is about 18%. Over 50% are wintered in the cellar, and the rest, with few exceptions, are wintered out of doors, protected. To the farmer who will make a business of keeping and looking after 10 to 25 or 50 colonies, a splendid profit may be made on the necessary investment.

BUTTER. See Dairying.

CANNING FACTORIES. There are over 70 factories that put up fruits and vegetables in tins and in glass.

CATTLE. The returns for 1908 show that in Ontario there were 1,113,394 milch cows valued at \$41,830,586, and 1,711,681 other cattle with a value of \$36,171,681. During the year 1908, 798,062 cattle were marketed for \$27,733,956. Toronto is the principal market, from which point large shipments are made to Great Britain. In June, 1909, export steers sold for \$6.60 per hundred. The products from the milk of the dairy cows form one of the chief sources of income to the farmers of the province, the value of cheese, butter, and milk and cream reaching about \$40,000,000. The keeping of dairy cows is each year being made more profitable through the culling of the herds. The weighing and testing of each cow's milk is becoming a more common practice, and farmers are thereby able to weed out the cows that do not show a good profit. A great many of the breeders of pure-bred stock are also keeping a record of performance of each of their cows.

CHEESE. See Dairying.

CIDER. A considerable quantity of apple juice is made in Canada, of which part is consumed fresh, part made into cider vinegar, a small quantity fermented by crude methods. The culls of the apple output might be profitably used for cider making. Lahor and other conditions favor the factory plan. A harrel of apples will produce 8 to 10 gallons of good cider. Cider delivered on quays at English ports fetch from 16c. to 17c. a gallon. Through freights from Western Ontario to Liverpool range from 33c. to 37c. per 100 lbs.

CLOVER. Red clover and alsike are grown extensively, both for hay and for seed.

CORN (MAIZE). Most of the Indian corn grown in Ontario is for forage purposes, large quantities being preserved in silos. Approximately 23,601,122 bushels produced in Ontario. Half of this amount is produced in the counties of Essex and Kent, used partly for distilling, partly for production of fat hogs, for which these two counties are noted.

DAIRYING. In 1908, 1,148 cheese factories gave an output of over 75,000 tons; gross value, \$18,000,000. The province exports more cheese than the whole of the U.S. Of butter, the greater portion is made on the farm. 102 creameries in 1908 made about 4,000 tons of butter. The manufacture of condensed milk is becoming an important industry; four such factories established in recent years. The furnishing of milk and cream for consumption as such in towns and cities is receiving more and more consideration, and the volume of raw material devoted to this trade is increasing rapidly from year to year. For openings for creameries, see Board of Trade Register in this book.

FARM VALUES.

	1898	1908
Land.....	\$556,246,569	\$671,531,018
Buildings.....	210,054,396	288,180,121
Implement.....	52,977,232	74,485,730
Live Stock.....	103,744,223	186,014,756
	<hr/>	<hr/>
	\$923,022,420	\$1,220,211,625

FIELD CROPS. According to Dominion Census Bulletin, December, 1908, the total value of all field crops of Ontario were valued at \$185,304,000; those of all Canada, \$432,530,000.

FLAX. Cultivated mainly for its fibre. Total area under cultivation, from 12,000 to 15,000 acres. The production of seed, about 12,000 bushels. There are large oil mills and about 45 scutching mills in Western Ontario. The quantity of oil produced varies from 15,000 to 20,000 barrels yearly, all marketed in the Dominion. The fibre finds a ready market in the U.S. and Great Britain.

FODDER CROPS. The area of pasture is about 3,350,000 acres. The area of hay is approximately 3,000,000 acres, yielding on an average 1½ tons per acre, and nearly 2 tons in more

favorable years. The hay crop forms in value about one-third of all the field crops. Most farmers grow a few acres of Indian corn, which is stored in the silo. It grows from six to ten feet high; crop averages 10 to 15 tons per acre, with occasionally much larger yields. In 1908, 456,049 acres were sown to mixed grains (peas, oats, barley, etc.) yielding 15,354,350 bushels. Lucerne or alfalfa is being more extensively grown than formerly.

FRUIT GROWING. Estimated total orchard and garden acreage in 1908, 327,000 acres; vineyards, 12,000 acres. The principal apples exported are early varieties, St. Lawrence and Duchess; winter varieties, Northern Spies, Greenings, King, Russett, Snow, Baldwin, Ben Davis, and Tolman Sweet. Peaches and grapes are the principal fruits grown in Niagara District. The finest pears for export are also grown. Only apples and pears are as yet exported to Great Britain. Peaches, plums and cherries for home market and Manitoba. Experimental fruit farm lately established in Niagara District, one object being to develop varieties suitable for long shipment. Over 30 co-operative fruit growers' associations carry on most profitable work in producing, packing and marketing fruits. Fruit lands valued at \$50 to \$1,000 per acre, according to location. For full information as to fruit growing, apply to Dept. of Agriculture, Toronto. For fruit districts, see Agricultural Lands.

GRAPES. The counties Lincoln, Wentworth and Welland produce 95% of grapes grown. Total annual output about 20,000 tons. The vine begins to bear at four years, and continues a lifetime. A grower in Niagara District estimates maintenance and profit per acre as follows: Cost of bringing into bearing, \$75; annual outlay when bearing (pruning and tying, cultivation, spraying three times, packing and packages), \$58.50. Average yield 3 tons, or 700 baskets at average price, 15c.—\$112.50. Net return, \$54. Markets, Toronto, Hamilton, and other neighboring cities; Western and Eastern Provinces. Wine manufacture absorbs about $\frac{1}{3}$ of crop. Good grape land costs from \$80 to \$125 per acre. See under Fruit Growing and Wine.

GRAIN CROPS. In 1908, the total yield and average yield per acre by bushels, as shown by the threshers' measures, Provincial Returns, was as follows: Spring wheat, 2,197,716, from 142,124 acres; average, 15.5. Winter wheat, 16,430,476 from 679,642 acres; average, 24.2. Oats, 96,626,419, from 2,774,259 acres; average, 34.8. Barley,

20,888,569, from 734,029 acres; average, 28.5. Rye, 1,453,616, from 87,908 acres; average, 16.5. Buckwheat, 3,323,668, from 140,605 acres; average, 23.6. Peas, 7,401,336, from 396,642 acres; average, 18.7. Beans, 783,757, from 46,477 acres; average 16.9. Total grain crop in 1908, 149,105,557 bushels; estimated value, \$66,670,459. Total acreage, 5,001,686. Average yield in bushels per acre in last 27 years: Spring wheat, 15.9; Winter wheat, 20.7; Oats, 35.7; Barley, 27.7; Rye, 16.4; Buckwheat, 19.8; Peas, 19.4; Beans, 17.1.

HORSES. The horses on the farms in Ontario in 1908 numbered 726,471. Of these 71,214 head were sold for \$8,878,225. A great many of those sold were work horses purchased for shipment to Western Canada. The principal breed of horses in the province is the Clydesdale. There are also considerable numbers of Standard breds, Thoroughbreds, Hackneys, Shires and Percherons. There is a strong demand for Draught Horses at from \$175 to \$225 per head.

LIVE STOCK. The value of live stock on the farms has increased by over \$80,000,000 in the past ten years. The values of live stock killed and sold has increased from \$34,450,583 in 1898 to \$62,975,648 in 1908.

MAPLE SUGAR AND SYRUP. The average annual sugar output of Canada approximates 17,804,825 lbs., valued in 1901 at \$1,780,482. Of this Quebec contributed 13,564,819 lbs.; Ontario, 3,912,640 lbs.; New Brunswick, 207,450 lbs.; Nova Scotia, 112,496 lbs.; other provinces, 7,520 lbs. Canada supplies 3-7 of the world's output. The trees are generally tapped in the latter part of March and April. Moderately warm days followed by freezing nights are the ideal conditions to promote flow. Seasons vary, but the cost of fitting up a modern sugar camp is a paying investment even at low market prices. For some time past the trade has been seriously interfered with by adulterated imitations. For instructions, etc., write for Bulletin No. 1 B, to the Department of Agriculture, Ottawa.

OATS. Next to hay, the most valuable field crop, worth 35 to 40 million dollars annually.

PEACHES. Good peach land planted in Niagara District costs from \$300 per acre up. Trees begin to bear in four years and should last 15 years. An expert peach grower estimates cost of maintenance and profit per acre as fol-

lows: Spraying, manuring, pruning and cultivation, \$28; picking, packing and packages, \$53; hauling to station, say \$5; total cost, \$86. Returns 700 baskets (11 quarts) at 50c.—\$350. Net return, \$264. The average orchard will yield less than the above figures. See under Fruit Growing.

PEAS. About 400,000 acres of peas are grown, yielding an average of nearly 20 bushels. Ontario peas are considered the best in the world.

POULTRY. The farmers of the province are each year realizing more and more the large profits that may be made from a flock of poultry. In 1908, 4,108,750 birds were marketed for \$1,895,753. A large number of poultry associations have been organized throughout the province for the purpose of raising the standard of poultry breeding. Ontario breeders have for many years been winning a large number of the principal prizes at the leading American Shows. At the Provincial Winter Fair held at Guelph, Ontario, each December, there is one of the greatest annual poultry shows on the continent. Last year there were 4,250 entries. Large quantities of poultry and eggs are shipped to the markets of Great Britain.

SHEEP. The climate and soil conditions of Ontario are particularly adapted to sheep raising. This has been demonstrated by Ontario breeders winning a large number of the prizes at the large American Expositions, such as the World's Fair at Chicago, the Pan-American at Buffalo, the Exposition at St. Louis, and the annual International Show at Chicago. According to the census returns for 1908 there were 1,143,898 sheep and lambs in the province, with a value of \$6,336,265. Of pure-bred sheep there are about 20,000 head in the province of the following breeds: Shropshire, Leicester, Oxford, Lincoln, Cotswold, Southdown, Dorset, Hampshire and Suffolk. On July 1st, 1909, good quality of mutton was selling on the Toronto market for from \$4.25 to \$5.00 per hundred weight, and spring lambs for from 8½c. to 10c. per pound. At the same time washed wool was quoted at 18c. to 20c. per pound. The home consumption of mutton and lambs has greatly increased during the last few years. The American cities afford a profitable market for the surplus stock, especially if the animals are of high quality. See Canada—Wool Clip.

SUGAR BEETS. The Dominion Sugar Co. owns the factories at Wallaceburg and Berlin, the only factories in Ontario. The Manager reports that in 1908 the Wallaceburg fac-

tory produced 11,600,000 lbs. of sugar from 43,500 tons, having average sugar contents of 16.08 per cent. The farmer's net profits per acre are estimated at from \$35 to \$100 in exceptional cases. No crop so effectually cleans the land, or so well fits it for barley, oats or wheat. The best pulp is carted hack to the farm for the feeding of stock. Total acreage planted to beets in 1909 is estimated at 10,000 acres. Write for Bulletin to Census and Statistics Branch, Department of Agriculture, Ottawa.

SWINE. During the past twelve years Ontario has become noted as a producer of bacon. Outside of Essex and Kent the hacon hog is the farmer's ideal, fed on dairy bye-products—peas, barley and wheat. A steady market is assured in the pork factories established at Toronto, Hamilton, Ingersoll, Brantford, Stratford, Peterborough and Ottawa. Yearly output of Toronto plant is estimated at \$3,000,000. About from 1 to 1¼ million hogs are annually slaughtered in the province. Fully one-half are exported as bacon and ham to Great Britain. The sales of hogs from Ontario farms increased from \$10,080,000 in 1897 to \$21,600,000 in 1908. The leading breeds of swine most common in Canada are the Yorkshire, Tamworth, Berkshire and Chester White, and to some extent the Poland China and the Duroc Jersey. There is a growing local demand for bacon which is streaked, though the lumber companies use a large quantity of mess or fat pork, which is imported largely from the United States at prices lower than Canadian growers can afford. Write for Bulletin No. 11, to Dept. of Agriculture, Ottawa.

TOBACCO. The growing of tobacco in Ontario is localized in the counties of Essex and Kent. The Burley variety predominates, which is suitable for the manufacture of chewing tobacco, and requires for curing the long summer and good fall found in Southern Ontario. Other varieties grown to a limited extent are the General Grant, Connecticut Seed Leaf and the Zimmer-Spanish, a few varieties of Havana Seed Leaf and the Brazilian variety. The yield per acre varies from 100 lbs. to one ton, safely averaging 1,200 pounds. Average price of products, 7 to 8 cents per pound. Cost of cultivation, including labor of grower, is estimated at \$50 per acre. Profits range from \$50 to \$75 an acre.

VEGETABLES AND ROOTS. About 350,000 acres are devoted to root crops. The average yield in bushels per acre

(1908) is 440, mangels; 275, carrots; 111, potatoes. The best potato growers average over \$100 per acre. Toronto alone consumes from 2,000 to 3,000 90 lb. bags per day, and other cities in proportion. About 80% of Toronto's potato supply comes from New Brunswick. For onions, 400 bushels is a fair crop. Average market price \$1.00 per bushel. Celery has an unlimited demand, and can be kept. Asparagus, cauliflower, peas, rhubarb, tomatoes, find a ready market in the canning factories. The maximum yield of potatoes is placed at 500 bushels to an acre. A northern grower states that in two successive years 12 acres of tomatoes netted him \$140 per acre. The production of early vegetables under glass is increasing, especially near Toronto, Hamilton and in Essex County.

WHEAT. See Grain Crops.

WINE. It is estimated one-third of annual vintage is manufactured into wine. Approximate annual output 275,000 gals. Chief varieties made: Dry Catawba, Sweet Catawba (a communion wine), Isabella, St. Augustine, Port, Sherry, Claret, Golden Diana, Rhine Wines, Champagne. Chief manufacturers: T. G. Bright & Co., Niagara Falls; Pelee Island Wine Co., Brantford; Hillcrest Wine Mfg. Co., St. Catharines; Ontario Wine Co., St. Catharines; St. David's Wine Growers Co., Toronto; Niagara Falls Wine Co., Niagara Falls; S. Allen, Norwich; G. Girardot Wine Co., Sandwich; M. Guindon, Sandwich; La Compagnie Robinet Frères, Sandwich; A. Tournier, Sandwich; Marsh & Co., Sandwich. Market chiefly in Canada.

Agricultural College

THE ONTARIO AGRICULTURAL COLLEGE, GUELPH, admits as students only those who have had practical farm experience. The total number in attendance in all classes during 1908 was 1,225. There are two courses for young men: One of two years, leading to an Associate Diploma and covering the practical details of the best methods of farm work, and the second, a four years' course, leading to the degree of B.S.A. from Toronto University. To young ladies, the Macdonald Institute offers three-month courses in cooking, sewing and laundry work; a home-maker course of one year, and two-year courses to prepare Professional Housekeepers and

Teachers of Domestic Science for our Public and High Schools. In addition to the regular work of the college, short courses for farmers in stock judging, seed judging, horticulture, dairying, and poultry husbandry, are offered during the winter months. During the past session, there were students in attendance from each of the provinces of Canada, and from the Argentine Republic, Belgium, Cape Breton, East Indies, England, Germany, Holland, Ireland, India, Japan, Jamaica, Mexico, New Zealand, Scotland, South Africa, Spain, The United States, and Wales. Write to G. P. Creelman, Principal.

Agricultural Lands

ADVANTAGES OF SETTLER IN NORTH ONTARIO. The land will produce as much per acre as western prairie lands. There is a market at the door, at high prices, for all farm produce. Fuel can be had for the cutting. The forest affords protection from the winds. In winter, money can be earned in the lumber, mining or construction camps. A settler can often sell logs off his own land which will pay well for the labor of clearing his farm. Numerous lakes and rivers afford abundant water supply and facilitate travel. Fish, game, and wild fruit abound. Write Director of Colonization, Toronto.

CROWN LANDS FOR SALE. Under the Public Lands Act, certain Crown Lands are sold in half lots of 160 acres, at 50c. an acre, one-quarter cash, and balance in three annual instalments with interest. Applicant must be a male or sole female head of a family, or a single man over 18 years. The purchaser must occupy within 6 months from purchase, erect a habitable house at least 16 x 20 ft., clear and cultivate 10% of the land, and reside thereon for 3 years. Patent is granted after three years from date of sale. Most lands now open for sale are subject to Timber Licenses and a reservation of minerals, but if land is reported not valuable for mines or minerals, and that purchaser is in actual possession, with substantial improvements, patent will be issued without reservation of mines and minerals, unless already staked out, recorded, leased or granted under the Mining Act. Write to Dept. of Lands, Forests and Mines, Toronto.

CROWN LANDS, FREE GRANTS. Under Free Grants and Homesteading Act a male, or sole female head of a fam-

ily having a child under 18 years residing with him or her, may be located for 200 acres as a free grant, and may purchase an additional 100 acres at 50c. per acre cash. In Thunder Bay District grant is limited to 160 acres, with right to purchase additional 160 acres. Settlement duties on each location are: (a) At least 15 acres to be cleared and cultivated, of which 2 acres are to be cleared and cultivated annually during the three years. (b) A habitable house to be built, 16 x 20. (c) Actual and continuous residence and cultivation of land for three years after location, and thence to issue of patent. In the district of Rainy River free grant is limited to 160 acres for head of family with children under 18, with right to purchase adjoining 80 acres at 50c. per acre cash, and to male applicant over 18 years without children grant is limited to 120 acres, with right to purchase adjoining 80 acres at 50c. per acre cash. Settlement duties same as above. Write for pamphlet to Dept. of Lands, Forests and Mines, Toronto.

FRUIT DISTRICTS. Tender fruits, as peaches, quince, plum and grapes, are grown on a commercial basis in the counties fronting on Lake Erie and on the south-west corner of Lake Ontario, where the low altitude and influence of the Great Lakes moderate the winter climate. From the Niagara district fruit is shipped by rail all over Ontario, and to Quebec, Manitoba, and Northwest Provinces. Fruit orchards here sell as high as \$1,000 per acre. Apples are grown successfully throughout the older sections of the province, especially in the counties from the shores of Lake Ontario northward to line of C.P.R., and in the valleys of the Ottawa and St. Lawrence Rivers; small fruits can be grown in almost any part of the province. Write to Director of Fruit Branch, Department Agriculture, Toronto.

IMPROVED FARMS. Fifty to a hundred acres can be purchased in the older portions of Ontario at from \$30.00 to \$100.00 per acre, the larger price including cost of buildings. The British tenant farmer can improve his condition and the prospects of his family by settling in old Ontario, where educational facilities and conditions of life are equal, if not superior, to what he has been accustomed to. Improved farms can be purchased direct from the owners through the Colonization Department of the Provincial Government. A list of farms for sale may be had on application to the Director of Colonization, Toronto.

GREAT CLAY BELT. In Northern Ontario, extends 100 miles north or south by 250 east or west, comprising sixteen million acres. The portion accessible by Temiskaming and Northern Ontario Railway is now available for settlement. Write Director of Colonization, Toronto.

RAINY RIVER VALLEY. A large district of unsurpassed fertility is open for settlement on line of Canadian Northern Railway. Native grasses, peas, and vetches luxuriant, and wild fruits grow in profusion. Fall and spring wheat, barley, peas, oats and garden vegetables do well; hay and clover yield abundant crops; lumbering operations are extensive. Important discoveries of gold and iron have been made. Free grant lands available. Write Crown Lands Department, Toronto.

TEMISKAMING SETTLEMENT. At the head of Lake Temiskaming a million acres has been laid out in townships. Soil is rich clay and black arable mould. The forest growth is thick, but easily cleared. A number of new townships near Cochrane, at the junction of the T.N.O. and G.T.P. Ry., were opened for settlement in 1908. Write Crown Lands Department, Toronto.

THUNDER BAY DISTRICT. Tributary to Port Arthur and Fort William on line C.N. Ry., is rapidly being settled. Grain, root and vegetable crops are abundant. Valuable deposits of iron and silver have been discovered. Free grant lands, 160 acres, subject to settlement regulations still available. Write Crown Lands Department, Toronto.

NIPISSING DISTRICT. The section between Sturgeon Falls and Sudbury in the valleys of French and Sturgeon Rivers, on C.P.R., is rapidly filling with hardy, thrifty settlers. The district is specially adapted for cattle, sheep and dairying. Excellent markets for produce at North Bay, Sturgeon Falls, Warren, Sudbury and other points. Write Director of Colonization, Toronto.

WARIGODN. A number of townships have been surveyed midway between Port Arthur and Winnipeg on C.P.R. main line. Free grants. Much of the tract is covered with trees suitable for wood pulp. Write Crown Lands Department, Toronto.

Fisheries

FISHERIES. The total value of the commercial fisheries in 1908 was \$2,100,079, as compared with \$1,333,293 in 1900, including whitefish, \$445,164; trout, \$577,415; herring, \$373,956; pickrel, \$300,589; pike, \$166,368; sturgeon, \$38,194; caviarc, \$9,847; hladders, \$354; eels, \$1,710; perch, \$45,767; catfish, \$35,367; tullibee, \$7,108; coarse fish, \$90,239; carp, \$8,339. The industry employed 145 tugs, valued at \$397,127, employing 688 men and 1,439 boats valued at \$144,117, employing 2,595 men. The total amount invested in tugs, boats, nets, ice houses, wharves, etc., was \$1,125,884.75.

Forest and Lumbering

FORESTS. Total area of forest land estimated at 102,000 sq. miles. North of the C.P. Ry. are about 60 million acres covered by spruce, jackpine and poplar. Red and white pine are found in large quantities in the Temagami Forest Reserve around the shores of Lake Temagami and Lady Evelyn, along the Montreal, Sturgeon and Wabnapitae Rivers and their tributaries; in the Mississaga Reserve, on the river bearing the same name and along its numerous tributaries; in the district of Rainy River, along the Minnesota boundary, extending from Rainy Lake to Hunters Island, and in small groves throughout the Sudbury District as far north as Fort Mettagami. The total stand of white and red pine still in the Crown on unlicensed lands exceeds 12 billion feet b.m. Pulpwood standing on Crown lands undisposed of is estimated at 350 million cords. The forests surround a network of lakes and many rivers, which afford abundant water power. Write to Crown Land Department, Toronto.

FOREST RESERVES. Temagami, 5,900 sq. miles; Mississaga, 3,000 sq. miles; Nepigon, 7,300 sq. miles; Quetico, 1,560 sq. miles; and the Eastern, 100 sq. miles—total, 17,860 sq. miles. It is estimated there are on these reserves over 7 billions of feet of pine, which is being conserved to be sold under stringent conditions.

TIMBER REGULATIONS. When it is deemed expedient areas are set apart and divided into berths or limits. The timber may be sold to the highest bidder or tenderer per thousand feet, board measure, to be paid when tim-

ber is cut. In addition to the bonus an annual ground rent of \$5.00 per sq. mile is charged, also Crown dues on timber cut as fixed by regulations, and half the cost of fire ranging. The license runs for one year, or until 30th April next after its date, and is renewable. The most recent concessions require pulpwood cut on Crown lands to be manufactured in the province into paper. Formerly manufacture into pulp only was required. Write to the Deputy Minister Crown Lands, Toronto.

Manufactures

MANUFACTURES. Ontario leads all the provinces in manufactures, the output in 1905 being \$281,500,000. The demand for all classes of commodities is increasing beyond the amount of local capital available for necessary expansion. There are opportunities in many lines. See the Boards of Trade Register.

Mining

ARSENIC. Mining operations are conducted in Hastings Co. Refined arsenic is produced at the works of the Deloro Mining and Reduction Co. from the silver-cobalt ores of the Cobalt District. Arsenical ore is also found in the Temagami District.

CEMENT. The demand for Portland Cement is rapidly increasing. Beginning in 1891, the production has increased from 2,033 barrels, valued at \$5,082, to 2,022,877 barrels in 1908, worth \$2,417,769, with average cost of barrel at \$1.95 in 1908. Hitherto marl has generally been used as one of the ingredients, but there is a tendency towards the substitution of solid limestone. There are fourteen plants in operation.

CLAY. All the decorative brick, terra cotta, roofing tile, and sewer pipe made in the province, is made from the Hudson River, Medina and Devonian Shales, which occur about Toronto, Hamilton, Beamsville, Milton, Brampton and Thedford. The Erie Clay, which is widespread, yields a good class of white brick. An upper weathered band of this clay makes good red brick. Other brick-making clays are abundant throughout the province.

COBALT. The mineral occurs abundantly in the silver ores of Coleman Township (see Ontario Silver), but cobalt re-

finers will only pay for cobalt in silver ores when in excess of 6%; in non-silver ores it brings, say 35c. per lb., when ores run over 16% cobalt; lower percentages in proportion. The chief use of cobalt is in the form of the oxide to produce the beautiful color known as cobalt blue. The Deloro Mining and Reduction Co., Deloro, and the Comiagas Reduction Co., Thorold, are both constructing plants for the manufacture, among other articles, of cobalt oxide.

COPPER. The chief source is the nickel copper mines (see Ontario Nickel), but the sulphide mines on the north shore of Lake Huron, which do not carry nickel, are growing in importance.

EMERY. Ontario has large deposits of corundum. The mineral is found in Renfrew and Hastings Counties. The business is confined to two companies, the Canada Corundum Company at Craigmont, and the Ashland Emery & Corundum Co. at Burgess Mines.

FELDSPAR. Quarries in Frontenac County are operated by Messrs. J. Richardson & Sons, Kingston, and Mr. Chas. Jenkins, Petrolia. The product is shipped to New Jersey and Ohio factories, for making enamelled ware. Total output in 1908 was 7,875 tons, valued at \$20,300. Workmen employed, 35; wages paid, \$15,631.

GOLD. According to the returns made to the Bureau of Mines, 3,465 ounces of bullion were obtained in 1908. Gold has been found on the shores of Larder Lake, on Sturgeon Lake, near Webbwood, on C.P.R., on Lake of the Woods, Manitou Lake, and other points in Northern Ontario.

GRANITE. In Hastings Co., near Bancroft, there are extensive beds of granite or gneiss, and dolomitic limestone of various tints, also a deep blue sodalite, suitable for inside decorative work. There are numerous occurrences of granite in the northern districts. See "Ontario Sodalite."

GRAPHITE. Operating companies are the Black Donald Graphite Mine near Calabogie, and the Globe Refining Co. in North Elmsley Township.

GYPSUM. The principal deposits are along the Grand River, from which, in 1908, 10,389 tons of crude gypsum were mined. The Alabastine Co., of Paris, manufactures wall plasters, alabastine, and a variety of commodities. There are extensive beds on the James Bay slope, but as yet these are inaccessible.

IRON. The output of iron ore in 1908 was 216,177 tons, valued at mine at \$574,839. The bulk was hematite from the Helen Mine in Michipicoten, the remainder magnetite from deposits in Northern and Eastern Ontario. A large deposit of magnetite has been opened at Moose Mountain, on the Canadian Northern Railway. The following analysis is given: Iron, 54%; phosphorus, .097; silica, 12.94; manganese, .619; alumina, 1.18; lime, 3.51; magnesia, 3.07; sulphur, .010; titanium, none; moisture, 2.60. Iron ore is found in Wisner Township, north of Sudbury, at Burwash Lake, in Temagami Reserve, and east of Lake Nepigon. Hematite is also being worked near Loon Lake, east of Port Arthur.

IRON—MOOSE MOUNTAIN MINE. The Sudbury-Sellwood extension of the Canadian Northern Ontario Railway runs to the Moose Mountain Iron Mine. With the coming of the railway in 1908, active operations were commenced on the mine, and many thousands of tons of high-grade ore were shipped to the new lake port, Key Harbor, on the Georgian Bay, and were shipped from that point by steamers to the large smelting centres.

IRON PYRITES. In 1908 the output was 20,970 tons, worth \$69,980, produced by the Nichols Chemical Company, near Bannockburn and near Tweed; the Northland Mining Co., near Rib Lake on T. & N. O. Ry., and the Lake Superior Power Company. A large body of pyrite has been opened up at Lake Minnetakie, on the Grand Trunk Pacific Railway, and shipments will be made in 1909. Sulphur is dissociated from the iron by roasting and used in manufacture of sulphuric acid. See "Ontario Sulphur."

MARBLE. White crystalline limestone and variegated marbles, near Bancroft, are worked by the Central Ontario Granite and Marble Co. Marble for the Parliament Buildings, Ottawa, was obtained from near Annprior.

MICA. The production is largely in the hands of large operators, of which the General Electric Co., controlling the Loughborough Mining Co., is chief. They produce large quantities from the Lacey Mine, near Sydenham, and from near Perth. The return for output 1908, chiefly of amber variety, was 368 tons rough cobbled mica, worth \$73,586. Canadian mica has a good reputation for flexibility, freedom from stains, etc. Export trade chiefly with U.S. and Great Britain. In Europe, Indian mica is a strong competitor.

MINERAL PRODUCTION. The annual Mineral Production of the Province of Ontario, as published by the Bureau of Mines, Ontario, is as follows:

1899.....	\$ 8,416,673	1904.....	\$11,572,647
1900.....	9,298,624	1905.....	17,854,296
1901.....	11,831,086	1906.....	22,388,383
1902.....	13,391,634	1907.....	25,019,373
1903.....	12,870,593	1908.....	25,637,617

NATURAL GAS. In Haldimand Co. the Dominion Natural Gas Co. pipes gas from a large number of wells to Hamilton, Dundas, Brantford, Galt, Paris, and a number of other places. Welland County continues to produce much gas; the Provincial Natural Gas Co., and the Mutual Natural Gas Co., are the chief operators, supplying Welland and several towns and villages; the former also piping to Buffalo. In Essex Co. the Leamington Oil Co. supply Leamington. Natural gas is also supplied from some of the oil wells in Tilbury and Romney fields.

NICKEL. Sixty per cent. of the world's output comes from the Sudbury District. Here ore is mined and treated by the Canadian Copper Co. and the Mond Nickel Co. It is first roasted in open air heaps to expel sulphur, then smelted into matte of nickel and copper, which is shipped for final separation of the metals, by the Canadian Copper Co. to Constable Hook, N.S., and by the Mond Nickel Co. to Clydach, Wales. A small quantity of nickel was derived from the Silver Cobalt Mines of the Cobalt District. Returns of the industry for 1908 show ore raised, 409,551 tons; ore smelted, 360,180 tons; Bessemer matte produced, 21,197; nickel contents, 9,563; value, \$1,866,059. Copper contents, 7,501 tons; value, \$1,062,080. Wages paid, \$1,306,665; men employed, 1,722.

PETROLEUM. The oil fields of Petrolia and Oil Springs are producing steadily, but at a diminishing rate, while the new fields at East Tilbury and Romney are adding considerably to the production. There are good opportunities for prospectors in this field and oil properties can be purchased to bring in a good income. The demand for oil and oil products requires the importation of nearly as much crude as is produced in the province. Returns for 1908 show crude oil produced, 18,479,547 imp. gals., value \$703,773; crude oil distilled, 34,675,120 imp. gals.; illuminating oil, 17,604,920 imp. gals.; lubricating oil, 3,384,940 imp. gals.; benzine and naphtha, 3,667,997 imp. gals.; gas and fuel oils and tar, 4,461,186 imp. gals. Par-

affine wax and candles, 5,400,003 lbs. Workmen employed (in refineries), 430; wages paid, \$247,829.

PROSPECTING. There are tempting opportunities for acquiring wealth in the mineral lands situated in the eastern, northern and north-western districts of Ontario. Discoveries are constantly being made of iron, nickel, cobalt, copper, silver, gold, and many other valuable substances, both metallic and non-metallic. The activity has been especially great during the last four years in silver, the silver mines of Cobalt being now world-famous. The mining laws require a prospector to take out a miner's license, the cost of which is \$5.00, which entitles him to stake out three mining claims of 40 acres each in every mining division. Usually two or more prospectors travel together. A birch-bark canoe costs \$10 to \$20; a tent, \$6 to \$8; cooking utensils, \$5; and blankets, \$4 to \$5 a pair. Provisions, such as flour, pork, tea, rice, etc., would cost about 35c. a day for each person. For mining laws, maps, reports, etc., apply to the Minister of Mines, Ontario.

SALT. The evaporating process is responsible for the total output of salt. The bulk comes from the wells of the Canadian Salt Company at Windsor. Other companies operate at Exeter, Goderich, Clinton, Wingham, Sarnia, Kincardine and Park Hill. The salt area extends through the Counties of Middlesex, Huron, Bruce and Lambton. In 1908, output was 79,112 tons, worth \$488,330. Workmen employed, 195; wages paid, \$93,700. At present no rock salt is mined. A boring was made at the mouth of the Maitland River, at Goderich, by the late H. Y. Attrill, of 1,517 feet, in which six beds were passed through, with a total depth of 112 feet. The following analysis was made of the second bed, 25 feet thick, at a depth of 1,085 feet, by Mr. Sterry Hunt, LL.D., F.R.S.: Chloride of sodium, 99.687; chloride of calcium, .032; chloride of magnesium, .095; sulphate of lime, .090; insoluble in water, .017; moisture, .079. This is said to be the purest salt in the world. The value of this deposit is enhanced by its proximity to the harbor, where grain vessels from the west want return freights, and by the adjacent deposits of limestone required for the manufacture of chemicals. This property is held for sale by Heaton's Agency.

SILVER. The discovery of high-grade silver ores in the Cobalt District was made in 1903. Average ores carry up to 3,000 and 4,000 ozs. of silver to the ton of 2,000 lbs. Some of the consignments have gone much higher.

Carload lots of 30 tons have brought \$60,000, \$90,000 and \$110,000. A typical analysis gives silver 11%, cobalt 11%, nickel 4%, arsenic 44%. There are over 30 producing mines. Shipments of ore from the Cobalt camp were 158 tons, value \$136,217, in 1904; 2,144 tons, value \$1,473,196, in 1905; 5,335 tons, value \$3,764,113, in 1906; 14,788 tons, value \$6,301,095, in 1907; 25,624 tons, value \$9,284,869, in 1908. Valuable discoveries have been made on the Montreal River at Miller and Gow Ganda lakes, and south of Lorrain Township. Similar ores are also found on the north-west shore of Lake Superior. The intervening district offers many possibilities to prospectors. The Cobalt silver mines, in 1908, produced 19,437,875 ounces.

SODALITE. The Princess Quarries Co., near Bancroft, Hastings Co., quarry a stone of a beautiful blue color, highly esteemed for decorative work.

SULPHUR. Sulphur is found as a redundant ingredient of the nickel ores of Sudbury District. It occurs abundantly in the form of iron pyrites, and as such can be roasted by one of the processes employed in the manufacture of sulphuric acid. (See under Iron Pyrites). The Nichols Chemical Co. of Canada, operating the Hungerford Mine, manufacture sulphuric, nitric and mixed acids, using 5 carloads of pyrites a day. For the opportunities for expansion of this industry in Canada, see Report Ontario Bureau of Mines, 1907.

QUARTZ. The Canadian Copper Co. and other mining concerns in 1908 raised 44,741 tons, valued at \$52,830, principally for flux and converter linings.

TALC. The Henderson Mine, near Madoc, is owned by S. Wellington, of Madoc, who, in 1908, mined and exported to the U.S. about 1,016 tons; value at pit's mouth, \$3,048.

ZINC. The Olden Mine in Hastings County raises a small quantity of ore yearly. There are unworked deposits on the main line of the Canadian Pacific Railway and elsewhere.

Cobalt Silver Mines—Shipments

From the Financial Post of Canada

MINE.	YEARLY SHIPMENTS.		
	1907	1908	1909
Buffalo.....	1,241.54	492.37	598.23
Chambers-Ferland.....	251.95	480.51
City of Cobalt.....	50.61	765.78	602.41
Cobalt Central.....	77.33	278.97	407.25
Cobalt Lake.....	202.94	70.67
Cobalt Townsite.....	143.22	174.24	27.18
Colonial.....	40.38
Coniagas.....	2,447.37	612.11	784.38
Crown Reserve.....	637.96	3,142.56
Drummond.....	104.13	1,071.94	1,141.13
Foster.....	312.13	188.65	113.90
Green-Mechan.....	98.39
Hudson Bay.....	142.53	1,110.04	675.06
Kerr Lake.....	319.76	633.49	1,277.05
King Edward.....	31.12	119.35	137.76
La Rose.....	2,815.45	4,931.89	6,884.31
McKinley-Darragh.....	742.42	1,831.05	1,073.52
Nancy Helen.....	30.10	201.67	83.92
Nipissing.....	2,538.26	3,615.62	6,520.17
Nova Scotia.....	272.21	264.08	240.50
O'Brien.....	1,491.61	3,462.21	1,427.72
Peterson Lake.....	40.67	162.03
Right of Way.....	129.37	768.10	1,454.04
Silver Cliff.....	181.55	147.91
Silver Leaf.....	46.36	186.79
Silver Queen.....	478.57	908.54	312.41
Temiskaming.....	204.32	733.97	903.09
Trethewey.....	833.58	1,408.53	1,074.43
Watts.....	250.61
Wettlaufer.....	112.35
Total for year.....	14,851.34	25,510.91	30,022.86

*In above figures miscellaneous shipments are not stated but are included in totals for the year. Miscellaneous shipments in 1909 not mentioned above are: Beaver, 50.73; Muggsley Concentrator, 67.64; North Cobalt, 20.00. A shipment by the Argentum Co., lessees of the Foster Co., is credited to the latter. The totals are collated from the weekly shipments.

The New Gold District, near Porcupine Lake, Ontario

Early in September, 1909, glowing reports began to be brought in from Northern Ontario concerning new gold fields in the Townships of Whitney and Tisdale. About November 10th the report of Inspector James M. Bartlett was made public. Mr. Bartlett, instructed by the Ontario Bureau of Mines to inspect and report upon the new region, made his visit at a time when little surface work had been done. Hence his report is merely a description of the claims that he inspected. Since Mr. Bartlett's visit the gold area has been enlarged by additional discoveries, and capital, principally Canadian and English, has become heavily interested.

This new field is popularly referred to as the Porcupine Region. It is easy of access, and can readily be opened up by rail connection should next summer's work bring favorable results. It is reached from a flag-station, on the Temiscaming and Northern Ontario Railway, 222 miles from North Bay. Porcupine Lake, which gives its name to the region, is about 28 miles from the track. By winter route the trail to the lake is almost direct. By canoe-route the distance is 60 miles. At present Porcupine Lake can be reached from Toronto in two days. Winter roads have been cut, and several road-houses have been erected.

As described by Inspector Bartlett, the country north and west of Porcupine Lake is a level, swampy plain, with occasional low outcrops of rock. The general strike is north-easterly. The rocks, which range from basic to acidic, are highly altered. Some of the veins occur in a quartz-schist. In Tisdale Township, Concessions 1 and 2, the rock exposures are higher, and chloritic and hornblende-schists are observable. In Concessions 1 and 5, Tisdale Township, parallel series of veins of milky quartz occur. In the outcrops of many of these veins visible gold has been discovered. Similar discoveries have been made in Concession 5, Whitney Township. One especially large body of quartz has been encountered in Concession 1, Tisdale. The vein, or aggregation of veins, reaches a maximum width of two chains, and has been traced for more than a mile. Throughout the milky quartz, which is practically free from sulphides, visible gold is found not infrequently.

Surface indications are most promising; the ore bodies show unusual surface dimensions; visible gold is not uncommon, and high assay results have been obtained. Briefly, the Porcupine country is worthy of exploration. The high prices already paid for some of the properties are speculative. It is impossible as yet to arrive at a definite opinion about the region.

Townsites

T. AND N. O. RY. The Commissioners of the Temiskaming and Northern Ontario Railway have opened up five townsites in Northern Ontario, viz.: Englehart, Latchford, Cobalt, Matheson and Cochrane, at the junction of the T.N.O. and the G.T.P. At each place, except Cobalt, lots are still available. Apply F. Dane, Commissioner T. & N.O. Ry., Toronto.

Water Powers

NIAGARA FALLS. The height of the falls is 168 feet. In 1900 the perimeter of the Canadian Falls was 2,950 ft. and the American Falls 1,000 ft. The whole is now reduced to about 3,500 ft. The mean depth of the American Falls does not exceed 1.5 ft., though some channels are deeper. The volume of water falling on the American side does not exceed 7% of the whole. The horse power at the Falls has varied from 3,818,000 h.p. in Feb., 1908, the minimum, to 7,033,000 h.p. on 7th Oct., 1858, the maximum. Franchises which have been granted are—to the Canadian Niagara Power Co., 100,000 h.p.; the Ontario Power Co., 180,000 h.p.; and the Electric Development Co., 125,000 h.p., all on the Canadian side; and to the Niagara Falls Hydraulic Co., 100,000 h.p.; and the Niagara Falls Power Co., 17,200 h.p., on the United States side. The two companies on the United States side and the Ontario Power Co. take their water from above the first cascade, and affect the river common to both countries. The others affect the Canadian Falls only. The Ontario Hydro Electric Commission have made arrangements with the Ontario Power Co. for the supply of power to the municipalities. For further information write the Geological Department, Ottawa, for report of Joseph Winthrop Spencer, 1905. See Heaton's Annual, under Canals and Waterways.

ONTARIO WATER POWERS. By an Act passed in the Provincial Legislature, 1898, any water power or privilege on the Crown Lands may be reserved from sale, except water privileges, which in their natural condition at the average low state of water have not a greater capacity than 150 horse power. Since the passing of this Act a

Hydro Electric Commission has been appointed, with authority to deal with the whole question of the development and supply of electric power. For the purpose of investigation, the province has been divided into five districts, and a detailed report made of each of them as follows: Niagara Falls District, Trent District, Lake Huron and Georgian Bay District, the Ottawa Valley and St. Lawrence Valley Districts, Algoma, Thunder Bay and Rainy River Districts. For copy of report write Secretary Hydro Electric Power Commission, Toronto. See also under Niagara Falls.

Description of Towns

This gazetteer is revised every year, and includes certified official returns from local Boards of Trade and the municipal authorities of towns where no Board of Trade is established. Information is given generally as received. The Editors reserve the right to use information obtained from other reliable resources, and to edit the returns made, but they cannot, for obvious reasons, from their own knowledge, vouch for the absolute accuracy of every detail in each case. As a general rule entries in this Register are confined to towns over 1,400 population. Where possible, a reliable local reference is given, who will supply further information upon request. When writing to local reference, mention should be made of "Heaton's Annual."

ABBREVIATIONS—Tel., Telegraph; Ex., Express; Pop., Population; Alt., Altitude—feet above the sea level. Altitudes are given as furnished by the Dominion Meteorological Office at Toronto.

ACTON (Halton Co.) on G.T.R. Can. Ex. Hotel, Riche-lieu. Industries, tannery, builders' factory, gloves, brooms, grist mill. Alt. 1,198. Pop. 1,500.

ALEXANDRIA (Glengarry Co.) G.T.R., C.P.R. at Green Val-ley Stn. (3 miles). Can. Ex., Dom. Ex. 2 hawks. Hotels, Grand Union \$1.50, Commercial \$1.50, McMaster Hall \$1.50. County seat. County Registry Office. Water power all in use. Waterworks and electric light. Neighborhood supplies hardwood. Alt. 256. Pop. 2,444.

SPECIAL OPPORTUNITIES.—Manufactures requiring hardwoods, foundry, land surveyor, feed store. Exemption granted from municipal taxes. Write the Mayor.

ALLISTON (Simcoe Co.) on G.T.R., C.P.R. Can. Ex., Dom. Ex. 3 banks. Hotels, Windsor, Morrow and Dominion. Industries, foundry, 2 builders' factories, agricultural implements, tannery, planing mill, flour mill, bricks, woollen mill, grist and shingle mill. Alt. 723. Pop. 1,307.

ALLANDALE (Simcoe Co.) on Kempenfeldt Bay, 63 miles n. of Toronto, now part of Barrie. Can. Ex. Tel. G.N.W. Industries, 1 saw mill, 1 carriage factory, and G.T.R. shops. Alt. 737. Pop. 1,500.

ALMONTE (Lanark Co.) on C.P.R. Dom. Ex. Hotel, Davis House. Industries include 2 knitting mills, builders'

factory, 5 cheese factories in vicinity, cement drain pipes, 2 woollen mills, flannel mill, flour mill, foundry, 2 banks. Alt. 399. Pop. 3,500. Write Mgr. Sterling Bk., Almonte.

ALTON (Peel Co.) on C.P.R. Dom. Ex. Industries, 2 knitting factories, agricultural implements, 2 flour mills, butter factory, saw mill. Alt. 1,313. Pop. 600.

ALVINSTON (Lambton Co.) on M.C.R., G.T.R. Can. Ex. Hotel, Grand Central. Industries, canning factories, flax mill, builders' factory, bricks and tiles, flour mill, woollen mill, carriage works. Alt. 729. Pop. 1,200.

AMHERSTBURG (Essex Co.) on M.C.R. Am. Ex. Hotel, Lakeview. Limestone quarries in neighborhood. Value of manufactured products, \$71,100 in 1901; \$103,924 in 1906. Alt. 593.

SPECIAL OPPORTUNITIES.—Soda ash and steel industries, lumber and planing mill, physician, druggist and veterinary surgeon. Reasonable encouragement offered to new industries. Write Town Clerk.

ARTHUR (Wellington Co.) on C.P.R. Tel. G.N.W., C.P.R. Dom. Ex. Hotel, Commercial. Industries include grist mill, 2 planing mills, flax mill. Alt. 1,523. Pop. 1,600. Write Mgr. Traders Bk., Arthur.

ARNPRIOR (Renfrew Co.) on C.P.R., G.T.R. Can. Ex., Dom. Ex. Hotels, McPhee House \$1.50, Campbell House \$1.50. Industries, 1 creamery, 2 cheese factories, 1 flour mill, 2 brick and tile factories, 1 woollen mill, 2 lumber mills, 1 builders' factory, 1 furniture factory. Power can be developed at Falls or Rapids of the Chats, good bass fishing on river known as Lac des Chats. Value of manufactures, \$1,117,322 in 1901; \$1,408,460 in 1906. Alt. 301. Pop. 4,500.

ATHENS (Leeds Co.) on Brockville and Westport Railway. Hotels, Gamble House \$1.50, Armstrong House \$1.50. Industries, woollen mill, 2 cheese factories, 1 builders' factory. Alt. 416. Pop. 1,000.

AURORA (York Co.) on G.T.R. and Toronto & York Radial Ry. Hotels, Queen's, Royal, Wellington. Industries, 1 builders' factory, flour mill, foundry, boots and shoes, hutter, agricultural implements, 1 grist mill, 1 creamery. Value of manufactures, \$213,539 in 1901; \$518,000 in 1908. Alt. 886. Pop. 1,700.

SPECIAL OPPORTUNITIES.—Woollen mills, tannery, good inducements to good firms. Write the Mayor.

AYLMER (Elgin Co.) on G.T.R., Wabash, M.C.R. Dom. Ex., Can. Ex., Am. Ex., Pac. Ex. Hotel, Brown House. Neighborhood supplies timber, tile, clay and fish, electric power owned by town, good dairy country. Industries include canning factory, foundry, saw mills, hoops and staves, leather specialties, bricks and tiles, butter and cheese, 3 builders' factories, flour mill, grist mill, condensed milk, shoes. Value of manufactured products, \$313,527 in 1901; \$793,114 in 1906. Alt. 761. Pop. 2,258.

SPECIAL OPPORTUNITIES.—Shoe factories, pork factories, cheese factories, creameries, woodenware, canning and evaporating plants. Liberal inducements offered in taxation, water, light, etc. Write Town Clerk or Mgr. Traders Bk.

AYR (Waterloo Co.) on C.P.R. Can. Ex., Dom. Ex. Hotel, Commercial. Industries, grist mill, flour mill, foundry, saw mill, implement factory. Alt. 961. Pop. 1,500.

AYTON (Grey Co.) on South Saugeen River and G.T.R., 9 miles from Clifford. Can. Ex. Tel. G.N.W. 5 churches, 1 bank, school. Industries include flour mill, saw mill, 2 planing mills, cordage factory, cider mill, grist mill, stave, hoop and barrel factory. Neighborhood supplies hardwood, hardwood timber, grain and stock. Pop. 500, mostly Germans.

SPECIAL OPPORTUNITIES.—Fine factory site available, $\frac{1}{2}$ mile from G.T.R. Application for tax exemptions, bonuses, etc., from manufacturers, decided on their merits. Power, water, 100 h.p. developed; 100 h.p. undeveloped. Electricity. Write the Reeve, or Mgr. Traders Bk.

BADEN (Waterloo Co.) on G.T.R. Can. Ex. Hotels, Baden, Central. Industries, builders' factory, woollen mills, lard oil, flour mill, butter factory. Alt. 1,156. Pop. 800.

SPECIAL OPPORTUNITIES.—Fully equipped foundry for sale on easy terms. Write Mgr. Dominion Bk.

BARRIE (on north side of Kempenfeldt Bay, Lake Simcoe, in Simcoe Co.) on G.T.R. Can. Ex. Dom. Ex. Hotels, Queen's, Simcoe. Industries, 2 breweries, 2 builders' factories, tannery, machine shop and boiler works, brick plant, woollen mills, carriage factory, 2 flour mills, gas producer and gas engine works. Value of manufactures, \$367,338 in 1901; \$774,366 in 1907. Alt. 726. Pop. 7,500.

SPECIAL OPPORTUNITIES.—Boot and shoe factory, clothing, whitewear, furniture, woodenware, sash and

door factories for N.W. market. Loan, free site, free water, exemption from taxes offered new industries. Write the Mayor.

BEAVERTON (Ontario Co.) on C.N.R., G.T.R. Can. Ex., C.N.R. Ex. Tel. G.N.W. Hotel, Hamilton \$1.00. Industries, brick kiln, foundry, tannery, flour mill, builders' factory. Summer resort, 2 hours' journey (5 trains daily) from Toronto. Alt. 761. Pop. 1,000. Write the Mayor, Beaverton.

BETON (Simcoe Co.) on the Nottawasaga River, G.T.R., C.P.R., 55 miles from Toronto. Can. Ex., Dom. Ex. Tel. G.N.W. and C.P.R. 2 hotels, 3 churches, 1 bank, public and high schools. Industries include grist, chopping and saw mills, 2 elevators, one fire-proof (cap. 100,000 bus.), farming, hosiery factory, brick yards, creamery. Town has waterworks and electric light. Good agricultural district. Natural gas has been found. Alt. 727. Pop. 1,000.

SPECIAL OPPORTUNITIES.—Carriage, sash and door factories. Good factory sites on G.T.R. Tax exemptions, etc., offered to manufacturers. Water power available. Write the Reeve, or Mgr. Traders Bk.

BELLEVILLE (Hastings Co.) on north shore of Bay of Quinte, Lake Ontario, on G.T.R. Can. Ex., Dom. Ex. Hotels, Quinte from \$2.50, Anglo-American \$1.50. Industries, 40, include flour mills, canning factories, cement works, stoneware, pottery, corsets, lanterns, distilleries, shingle machines, soda water, shirts, furniture, paper, rock drills, 2 foundries, 3 builders' factories, rolling mills, vinegar and jams. Value of buildings erected 1906, \$600,000. Value of manufactures, \$558,950 in 1901; \$1,658,112 in 1906. Alt. 251. Pop. 10,000. Write Sec. Bd. Trade, or Mgr. Dominion Bk., Belleville.

BERLIN (Waterloo Co.) on C.P.R., G.T.R. Can. Ex., Dom. Ex. Tel. G.N.W., C.P.R. Electric lines to Waterloo, Galt, Hespeler, Brantford and Hamilton. Hotels, American \$1.25, Walper \$2. A good agricultural district, flax, beets, etc., grown. Over 75 factories, including furniture, pianos, leather, foundries, bicycles, biscuits, tannery, beet sugar, buttons, etc. Value of manufactures, \$3,307,513 in 1901; \$6,750,000 in 1908. Alt. 1,100. Pop. 13,664.

SPECIAL OPPORTUNITIES.—Specialties used by furniture factories, of which there are 15 here. No factory

making brass fittings and hardware used by them. Town offers special tax privileges, cheap water and power. Write Sec. Bd. Trade, or Mgr. Dominion Bk.

BLENHEIM (Kent Co.) on Pere Marquette Ry. Tel. G.N.W., C.P.R. U.S. Ex., Dom. Ex. Hotel, Eric House \$1. Industries, flour mill, evaporator, bricks and tiles, 5 huilders' factories. Value of manufactures, \$73,090 in 1901; \$400,555 in 1906. Alt. 681. Pop. 1,700. Write the Mayor, Blenheim.

BLIND RIVER (Algoma District) on C.P.R., hoats from Owen Sound and Sault Ste. Marie. Tel. C.P.R. Dom. Ex. Hotel, Grand View \$1.50. A lumhering district, with copper, iron and silver prospects, good harbor on Blind River. Industries include 2 lumber mills, planing mill, foundry. Alt. 603. Pop. 2,700. Write Mgr. Traders Bk., or Sec. Bd. Trade.

SPECIAL OPPORTUNITIES.—Mill site available on Blind River Harbor, hox factory. Write to Mgr. Traders Bk., Blind River.

BLYTH (Huron Co.) on G.T.R., C.P.R. Can. Ex., Dom. Ex. Tel. G.N.W. Hotel, Commercial. Industries, glove factory and tannery, grist mill, evaporator, 2 huilders' factories, 2 brick kilns, woollen mill. Alt. 1,080. Pop. 1,000. Write the Mayor, Blyth.

BOBCAYGEON (ou 3 islands between Pigeon Lake and Sturgeon Lake, in Victoria Co.) on C.P.R., daily boat in summer to Bridgenorth or Chemong, 20 miles, connecting with stage to Peterboro. Dom. Ex. Bank. Hotel, Rockland \$1.50. Seat of Hillcroft School for small boys, Principal, W. T. Comber, B.A., Wadham Coll., Oxon. Distant 3 hours from Toronto, 2 trains both ways. Centre of summer tourist district. Industries, large flour mill, 2 lumber mills, planing mill. Pop. 1,000.

SPECIAL OPPORTUNITIES.—Power, 500 h.p. available. First-class summer hotel. Good fishing and boating. Boot and shoe store. Write the Reeve.

BOLTON (Peel Co.) on C.P.R. Dom. Ex. Hotel, Queen's. Industries, flour mill, woollen mill, foundry. Alt. 835. Pop. 1,200.

BOWMANVILLE (Durham Co.) on G.T.R. Tel. G.N.W., C.P.R. Can. Ex. Hotel, Bennett House \$1.50. Industries, organ and piano company, rubber company, evaporator, brick yard, pot barley mill, flour mill. Alt. 261. Pop. 3,000. Write the Mayor, Bowmanville.

DESCRIPTIONS OF TOWNS

BRACEBRIDGE (Muskoka District) on G.T.R., dally boats from Gravenhurst in summer. Can. Ex. Tel. G.N.W. Hotels, Queen's, British Lion, Dominion, \$1 to \$1.50. District supplies timber and all kinds of wood. Power, water and electric, 170 h.p. developed, \$12.50 per h.p. Industries include tannery, woolen mills, furniture, linen mills, grist mill, builders' factory, foundry, 3 lumber mills. Alt. 817. Pop. 3,000. Write the Mayor, Bracebridge.

SPECIAL OPPORTUNITIES.—For manufacturers there will be about 500 h.p. electric power at \$12.50 or \$13.00 per h.p. Fair shipping facilities. Tanneries and saw mill offer work for the right kind of man. Write the Mayor, Bracebridge.

BRAMPTON (Peel Co.) 21 miles n.w. of Toronto, on G.T.R., C.P.R. Can. Ex., Dom. Ex. Hotel, Queen's \$1.50. County seat. Industries include flour mill, boots and shoes, grist mill, office supplies, brick clay is found in neighborhood. Output of factories—value, \$248,915 in 1901; \$819,650 in 1906. Alt. 712. Pop. 3,500. Write Mgr. Dominion Bk., Brampton.

BRANTFORD (Brant Co.) on G.T.R., T.H. & B., C.P.R., Lehigh Valley, M.C.R., N.Y.C. Can. Ex., Dom. Ex. Hotels, Kerby from \$2.50, Belmont \$1.50. County seat. Value of new buildings, \$500,000 in 1908. Value of manufactures, \$5,500,000 in 1901, \$10,000,000 in 1909. Industries, over 70, include wagons, envelopes, brewery, paper boxes, bricks, carriages, felt and rubber, hosiery, towels, asphalt, roofing, screws, bolts, woodworking, corn starch, flour mills, foundries, agricultural implements, plows, engine and boiler works, windmills, Portland cement. Power, water, natural gas, electric from Niagara. Alt. 691. Pop. 20,000.

SPECIAL OPPORTUNITIES.—Manufactures of all kinds. workmen's houses. New industries offered inducements on application. Natural gas and cheap electric power. Factory sites on or off railways. Good shipping facilities. Write Industrial Commissioner, Brantford.

BRIDGEBURG (Welland Co.) on G.T.R., M.C.R., Wabash Ry. Can. Ex., Am. Ex. Tel. G.N.W. Beautifully situated on bank of Niagara River. Power supplied by natural gas, present cost 25c. per M. Electric power from Niagara. Industries include shipbuilding, automatic fire shutters, stretchers, soap, chemicals. Alt. 587. Pop. 1,600. Write Mgr. Traders Bk.

SPECIAL OPPORTUNITIES.—For manufacturers good sites and good railway facilities. Write Mgr. Traders Bk.

BRIGHTON (Northumberland Co.) on G.T.R., on Lake Ontario. Can. Ex. Hotel, Central. Industries, canning factory, evaporator builders' factory. Alt. 303. Pop. 1,600. Write Pres. Bd. Trade.

BROCKVILLE (Leeds Co.) on G.T.R., C.P.R., B. & W. Ry. Can. Ex., Dom. Ex. Hotels, Stratheona \$2.50, Revere \$2, St. Lawrence \$1.50, Grand Central \$1.50. County seat. Industries include biscuits, machine works, brewery, 2 woodwork factories, 2 builders' factories, carriages, agricultural implements, foundry, hats. Value of manufactures, \$1,551,591 in 1901; \$2,100,000 in 1909. Alt. 280. Pop. 9,200.

SPECIAL OPPORTUNITIES.—For manufacturers there is good transportation by rail and water. Write Mgr. Bk. Toronto, Brockville.

BURLINGTON (Halton Co.) at head of Lake Ontario on G.T.R. and Hamilton Radial Ry. Can. Ex., Dom. Ex. Hotel, Raymond. On line of Toronto and Niagara Power Co., cost to manufacturers about 25 per h.p., 24 hour service. Alt. 281. Pop. 1,500.

SPECIAL OPPORTUNITIES.—Flour mills, canning factory, building houses to rent from \$8 up. Fruit and farm lands for sale. Power supplied from Niagara. Write Sec. Bd. Trade, or Mgr. Traders Bk.

CALEDONIA (Haldimand Co.) on G.T.R. Can. Ex. Beautifully situated on Grand River. Hotel, Caledonia. Neighborhood supplies apples, vegetables, unlimited gypsum. Grand River supplies good water power, natural gas is unlimited. Industries include canning factory, evaporating factory, cheese factory. Alt. 652. Pop. 1,000.

SPECIAL OPPORTUNITIES.—Any factory using farm produce as raw material, sash and door factory, canning factory. Write the Mayor.

CAMPBELLFORD (Northumberland Co.) on G.T.R. Daily stages from Brighton, 21 miles, and Havelock, 12 miles. Can. Ex. Dom. Ex. Hotel, Windsor. Industries, sash and door, foundry, builders' factory, tannery, carding mill, paper, cheese boxes, shoes, flour mill, grist mill, woollen cloth mill. Power and Electric Co., wood pulp factory, steel and iron bridges. Alt. 476. Pop. 3,000. Write A. B. Colville, Campbellford.

SPECIAL OPPORTUNITIES.—Manufacturers can obtain free sites, fixed assessments and very cheap electric power. Important industries are wanting here. Write A. B. Colville, Campbellford.

CARGILL (Bruce Co.) on G.T.R. Can. Ex. Tel. G.N.W. Good farming and apple district, supplying timber, marl, limestone, brick clay. Water power. Industries include lumber and flour mill, sashes and doors, planing mill. Alt. 874. Pop. 400. Write Mgr. Traders Bk., Cargill, Ont.

CARLETON PLACE (Lanark Co.) on C.P.R. Dom. Ex. Hotels, Mississippi \$1.50, Queen's \$1.50. Industries include flour mill, woollen mill, 2 builders' factories, stove foundry, foundry, and machine shop. Value of manufactures, \$392,755 in 1901; \$597,160 in 1906. Alt. 447. Pop. 4,500.

SPECIAL OPPORTUNITIES.—Furniture factory, cooperage, brick and tile, and cement works. Write the Mayor.

CHATHAM (Kent Co.) on Thames River, navigable. G.T.R., C.P.R., Wabash, Pere Marquette. Tel. G.N.W., C.P.R. Hotels, Merrill \$1.50, Garner \$2, Rankin \$1.50. County seat. A good farming and fruit district, which also supplies crude oil, natural gas for domestic purposes 25c. per 1,000 ft. 10c. to 15c. for manufactures. Industries include 3 builders' factories, 2 flour mills, carriage wheels, fanning mills, malleable iron and steel specialties, wagons, machine shop, woollen mills, brick and tiles, gas and gasoline engines, axles, barrels, canning, fruit evaporator, aerated water, engine and boiler works, butter, carriages. Value of manufactures, \$2,714,977 in 1901; \$3,590,220 in 1906. Value new buildings, \$128,844 in 1906. Alt. 598. Pop. 12,000.

SPECIAL OPPORTUNITIES.—Pork factory, canning factory. Power rates, natural gas 10c. per M. cub. ft. Electricity 5c. per M. watts to large consumers. Town offers free water, exemption from taxes and free sites or loans. Write Sec. Bd. Trade, or Mgr. Dominion Bk.

CHESLEY (Bruce Co.) on G.T.R. Can. Ex. Hotels, Commercial \$1.50, McDonald House \$1.50. Industries include saw mill, rakes and novelties, flour mill, woollen mill, furniture, butter factory. Value of manufactures, \$222,950 in 1901; \$487,649 in 1906. Alt. 980. Pop. 1,600.

CLINTON (Huron Co.) on G.T.R. Can. Ex. Hotel, Normandie. Industries include hosiery, organs, threshing machines, builders' factory, flour mill, boys' clothing, salt works. Value of manufactures, \$338,225 in 1901; \$386,818 in 1906. Good agricultural district. Alt. 582. Pop. 2,800.

SPECIAL OPPORTUNITIES.—Canning factory. Write the Mayor.

COBALT on Cobalt Lake, 330 miles north of Toronto, on T. & N.O. Ry. Dom. Ex. Tel. T. & N.O. Hotels, Prospect, Cobalt. A mining camp. The richest silver district in the world. 3 banks. (See under Mining.) Pop. 5,500. Write Can. Bk. Commerce, Cobalt.

COBOURG (Northumberland Co.) situate on Lake Ontario, on G.T.R. Can. Ex. Tel. G.N.W. C.P.R. Steamboat connection with Toronto and Montreal. Ferry to Rochester, carrying 28 loaded cars. A fashionable summer resort, frequented by families from U.S., who are said to leave annually over \$250,000 in the town. Hotels, Arlington \$2, \$2.50, Dunham \$1.50, \$2, Columbian and Cedarmere on lake shore. Electric power will be supplied from Healy's Falls. Industries include Crossen Car Works, Provincial Steel Co. for re-rolling of steel rails, cocoa matting, woollen mill, builders' factory. Value of manufactures \$949,968 in 1901; \$871,842 in 1906. Alt. 295. Pop. 5,300.

SPECIAL OPPORTUNITIES.—Summer cottages. Manufacturers of any line. The G.T.R. ferry insures cheap fuel. The best harbor on north shore of Lake Ontario. Good sites on G.T.R. Town would offer tax exemptions, free water and free sites. Write Mgr. Dominion Bk., or Sec. Bd. Trade.

COLLINGWOOD (Simcoe Co.) port on Georgian Bay, on G.T.R., steamboats to all Canadian and U.S. ports. Can. Ex. Hotels, Globe, and 5 others. Numerous undeveloped water powers, hardwood and pine logs are towed in. Industries include brooms, furniture, wire nails, biscuits, 2 builders' factories, flour mill, 2 lumber mills, packing house, dry dock and ship yard, foundries, tannery, wood-working factory, saw mills. Value of manufactures, \$3,232,609 in 1901; \$2,937,477 in 1906. Alt 587. Pop. 8,000.

SPECIAL OPPORTUNITIES.—Woodworking plants. Fully equipped furniture factory for sale at a bargain. Inducements given on application. Write Sec. Bd. Trade, or Mgr. Traders Bk.

CORNWALL (Stormont Co.) at foot of Long Sault Rapids, on G.T.R., Ottawa and N.Y. Ry. Can. Ex. Hotels, Rossmore, Balmoral. County seat. Terminus of Cornwall Canal. Industries include cotton mills, furniture, foundry, pottery, woollen mill, bricks, two saw mills, threshing machines, aerated water, paper, bedstead and spring mattress factory, builders' factory, brewery, stove foundry. Value of manufactures, \$2,159,809 in 1901; \$2,210,901

in 1906. Alt. 191. Pop. 6,700. Write Mgr. Sterling Bk., Cornwall.

DELHI (Norfolk Co.) on G.T.R. Can. Ex. Hotel, Stoddard House. Industries, eanning factory, builders' factory, gloves, knitting mill, foundry, moccasins, grist mill. Alt. 761. Pop. 1,000.

DESERONTO (Hastings Co.) situated on Bay of Quinte. On B. of Q. Ry., connecting with G.T.R., and C.P.R. Can. Ex., Dom. Ex. Tel. G.N.W., C.P.R. Hotel, Deseronto House \$1. Centre of excellent farming district, containing iron, lead, mica, asbestos, iron pyrites, gold, limestone, etc. Town has extensive water front, with a depth of water to accommodate boats loaded to pass Welland and St. Lawrence Canals. Industries include saw mills, furniture, blast furnace, sash and door factory, chemicals, ear works. Alt. 252. Pop. 3,750.

SPECIAL OPPORTUNITIES.—Metal and iron goods, textiles, wood pulp and paper mills, cement works, small wares of all kinds. The cost of land is low and cost of labor and living lower than in cities. Town will grant to a *bona fide* enterprise a nominal rate of taxation. Write the Mayor.

DRAYTON (Wellington Co.) on G.T.R. Can. Ex. Hotel, Queen's. Tile and brick clay found in neighborhood. Good agricultural district. Industries, 3, including elevator. Alt. 1,356. Pop. 857.

SPECIAL OPPORTUNITIES.—Foundry, stove factory, brick yard, shoe factory, eanning factory, farm laborers. Exemption from taxes given to new industries. Write Town Clerk, or Mgr. Traders Bk.

DRESDEN (Kent Co.) on Sydenham River, navigable, Pere Marquette Ry. Dom. Ex., U.S. Ex. Hotel, Wilcocks. Industries, grist mill, foundry, builders' factory, bentwood, flour mill, eannery, flax mill, brick and tiles, planing mill, 3 elevators. Good farming country, producing corn, tomatoes, potatoes, sugar beets, hops. Value of manufactured products, \$63,170 in 1901; \$156,000 in 1906. Alt. 604. Pop. 1,732.

SPECIAL OPPORTUNITIES.—Manufactures, fruit and dairy business, short railway line to Thamesville to connect C.P.R. and G.T.R. with town, farm laborers. Inducements offered on application. Write Town Clerk or Mgr. Dominion Bk.

DUNDAS (Wentworth Co.) on G.T.R., T.H. & B., Electric Ry. from Hamilton, 5 miles. Can. Ex., Dom. Ex. Hotel,

Riley House \$1.50. Industries include quarry, tanneries, small tools, baskets, gloves, malt, clothing, hosiery, doors, yarns, machine tools, builders' factory, knitting factory, flour mill, cement brick, barbers' supplies, church and school furniture, willow furniture. Value of manufactures, \$1,017,150 in 1901; \$1,700,051 in 1906. Alt. 516. Pop. 4,000.

DUNNVILLE (Haldimand Co.) on G.T.R. Can. Ex. Hotel, Queen's. Industries, 2 foundries, saw mill, 3 knitting factories, hammocks, 2 flour mills, cannery, 2 builders' factories, butter, woollen mill, staves, and fish boxes. Value of manufactures output, \$268,090 in 1901; \$444,280 in 1906. Pop. 2,000.

DURHAM (Grey Co.) on Saugeen River and G.T.R., 28 miles south of Owen Sound. Can. Ex., Dom. Ex. Tel. C.P.P., G.N.W. Hotels, Hahn House \$1.50, Central \$1.00. 5 churches, 2 banks, public school and public library. Industries include grist, saw, woollen, planing and oatmeal mills, 1 tannery, 1 foundry, 1 furniture factory, Portland cement works, wagon and sash and woodworking and builders' factories. Pop. 1,800.

SPECIAL OPPORTUNITIES.—Sash and door factory, carriage and wagon factory. Another cream separator factory. Tax exemptions, free sites and loans without interest, and other inducements offered. Developed and undeveloped water power available, and some electricity. Low tax rate, cheap living. Write Mayor, or Mgr. Traders Bk.

DUTTON (Elgin Co.) on M.C.R., Pere Marquette Ry. U.S. Ex., Dom. Ex. Hotel, Queen's \$1.00. Industries include saw mill, 2 builders' factories, flour mill, foundry and machine shop, windmills. Alt. 722. Pop. 1,000.

SPECIAL OPPORTUNITIES.—Chair works (veneer material now manufactured in town), canning factory, seed and flour and feed store. Inducements given on application.

EGANVILLE (Renfrew Co.) on C.P.R., G.T.R. Dom. Ex., Can. Ex. Hotel, Ottawa House \$1.00. Industries, flour and saw mill, sash and door. Graphite found in neighborhood. Alt. 549. Pop. about 1,100.

ELK CITY (Dist. of Nipissing) on Elk Lake, an extension of the Montreal River. Transportation in summer, 2 daily steamboat lines from Latchford, 55 miles; in winter, stage from railway station at Charlottetown, 24 miles. Express forwarded by Upper Ont. S.S. Co. Hotels, Mata-

DESCRIPTIONS OF TOWNS

bannick \$2.50, Smythe \$2.50, and 3 others. Town has Anglican, Presbyterian, Methodist, and R.C. churches, 3 banks, 3 saw mills, 33 stores, including hardware, drugs, dry goods, hakeries, lumber, jewellery and butcher, 2 liverys, 8 restaurants, public and separate schools. Permanent population about 1,800. A large floating population; 3,000 men are employed in neighboring mines.

SPECIAL OPPORTUNITIES.—Mining, building, freight teaming to mines. Write Mgr. Bk. of Commerce.

ELMIRA (Waterloo Co.) on C.P.R., G.T.R., 12 miles north of Berlin. Can. Ex., Dom. Ex. Tel. G.N.W., C.P.R. Hotel, Zilliax House. Public schools, public library, 7 churches, 2 banks. Industries include roller flour, saw-planing and woollen mills, agricultural implements, furniture, stave and heading, upholstering, spring bed and mattress factory, foundry and machine shops, largest felt boot factory in Canada, 2 grain elevators (cap. 125,000 bus.). Alt. 1,142. Pop. 1,600.

SPECIAL OPPORTUNITIES.—Cheap labor and first-class railway facilities. Factory for shirts, whitewear, cuffs and collars. Sites available on G.T.R. and C.P.R. Tax exemptions, loans, free water, free sites and other inducements offered. Write Sec. Bd. Trade, or Mgr. Traders Bk.

ELORA (Wellington Co.) at confluence of Grand and Irvine Rivers, on C.P.R. and G.T.R., 13 miles n.w. of Guelph. Dom. Ex. Tel. C.P.R. Hotels, Commercial \$1.50. 4 churches, 2 banks, high and public schools. Industries include cabinet, carriage, sash and door, and agricultural implement factories, brewery, woollen mill, saw mill, 2 oatmeal mills, chair factory, farming. Beautiful surrounding scenery. Alt. 1,270. Pop. 1,400.

SPECIAL OPPORTUNITIES.—Lime kiln, machine shop, furniture factories. Well-equipped factory for sale. Village offers every possible inducement to good concern. Write the Reeve, or Mgr. Traders Bk.

ESSEX (Essex Co.) on M.C.R., Electric Ry. to Windsor. Good farming country, brick clay found in neighborhood. Industries, 6, including 2 elevators. Alt. 643. Pop. 1,500.

SPECIAL OPPORTUNITIES.—Boring for oil, gas or petroleum. Write Sec. Bd. Trade, or Mgr. Imperial Bk.

EXETER (Huron Co.) on G.T.R. Can. Ex. Hotel, Central. Good farming country. Industries, flour mill, tannery,

woollen mill, foundry and machine shop, builders' factory. Value of manufactures in 1901, \$142,411; in 1906, \$248,080. Alt. 872. Pop. 2,000.

FENELON FALLS (Victoria Co.) on G.T.R. Steamboats to Coboconk and Rosedale. Can. Ex. Hotels, Kawartha (summer only), Mansion and McArthur. Industries, 2 flour mills, saw mill, chemical works, woollen mill, Perrin's boat works, good water power owned by village close to timber supplies. Summer resort. Alt. 846. Pop. 1,500.

SPECIAL OPPORTUNITIES.—Small manufacturing concerns using lumber, cheap power. Write Mgr. Bk. British N. America.

FERGUS (Wellington Co.) on Grand River, G.T.R., C.P.R. Dom. Ex., Can. Ex. Hotel, Commercial \$1.50. Farming district. Limestone in neighborhood. Water and electric power. Industries, 8, including elevator. Pop. 1,600.

SPECIAL OPPORTUNITIES.—Manufactures, liberal treatment to new industries. Write Mgr. Imperial or Traders Bks.

FOREST (Lambton Co.) on G.T.R. Industries include saw mill, flax mill, builders' factory, flour mill, foundry, machine shop. Alt. 711. Pop. about 1,500.

FORT ERIE (Welland Co.) on M.C.R. Can. Ex. Hotel, Anglo-American \$1.00 up. Power, natural gas, electricity and water. Cost natural gas 28c. per M. feet. electricity \$18 per h.p. Alt. 605. Pop. 1,214. Write Mgr. Sterling Bk., Fort Erie.

FORT FRANCES (Rainy River District) on C.N.R. Ex. and Tel. C.N.R. Boat tri-weekly from Kenora. Hotels, Emperor, Fort Frances, Monarch \$2 to \$3. Neighborhood supplies iron ore, pulpwood, peat, lumber, fish, gold. Power, 4,000 h.p. developed. Industries, brickyard and saw mill, pulp and paper mills. Alt., 1,112. Pop. 1,500.

SPECIAL OPPORTUNITIES.—Pulp mill, saw mills, flour mills, boat factory, leather tanneries, hardware and shoe factories. Write Sec. Bd. Trade.

FORT WILLIAM (Thunder Bay District) at head of lake navigation on Lake Superior, bulk-breaking point for all incoming and outgoing freight of Western Canada. Incorporated as a city in 1907. Shipping facilities, lake terminus of C.P.R., G.T.P., and on C.N.R. Boat com-

DESCRIPTIONS OF TOWNS

panies: Northern Nav. Co., Canada Lakes Co., Merchants, Montreal and Lake Superior Line, Montreal Transit Co., Canada Atlantic Transit Co., United States and Dominion Co., Parry Sound Tran. Co., Port Huron and Duluth S.S. Co., R. O. and A. B. McKay, Collingwood Shipping Co., Alpena Pulford Co., all regular package freighters on schedule, besides several regular coal carriers, and three steel rail carriers. Dom. Ex. Nine miles of electric street railway, city and suburban, to Port Arthur, 3 miles and a half. Hotels, Kaministiquia \$2 to \$3 per day, Avenue \$2.50 up per day, Empire \$2 per day, Leland, St. Louis, Ogden \$1.50 to \$2 per day. Industries include 12 elevators (cap. 18,940,000 hus.), stove ranges factory, Canadian Iron and Foundry Co., Ogilvie Flour Mills, (cap. 4,000 bbls. per day), 4 brick factories, broom factory, factory, sash and door factory, broom factory, brewery, machine shop, car wheels, 5 cement block plants, 2 electric light cos., 10 chartered banks. Power, from Kakebeka Falls, by the Kaministiquia Power Co., 35,000 h.p. now developed, 100,000 h.p. undeveloped. District supplies iron ore developed by Atikokan Iron Co., blast furnace 3 miles; silver at Silver Mountain Mine, 40 miles; pulpwood and copper. Municipality owns telephone, light, heat, and water systems; cost to consumers very low. In 1908 freight handled 1,273,000 tons, coal handled 1,000,000 tons. Vessels arriving and departing, 1,894; tonnage, 3,369,150. Alt. 607. Pop. 20,000.

GALT (Waterloo Co.) on C.P.R., G.T.R., Grand Valley Electric, and Galt, Hespeler and Berlin Electric. Can. Ex., Dom. Ex. Hotels, Imperial, Grand, Iroquois, \$1.50. Neighborhood supplies lumber, limestone, sand. Industries, about 50 factories, including edge tools, knitting mills, foundries, safe works, boots and shoes, flour mills, woodworking factories. Value manufactures, \$2,225,343 in 1901; \$2,849,155 in 1906. Alt. 927. Pop. 9,700.

SPECIAL OPPORTUNITIES.—Manufactures of all kinds. Excellent railway switches ordered by 3 roads. No industrial strikes. Electricity supplied at \$13 per h.p. per annum. Niagara power in near future. Town has granted tax exemptions, free sites, and loans. Write Sec. Bd. Trade, or Mgr. Imperial Bk.

GANANOQUE (Leeds Co.) on G.T.R. Can. Ex. Hotels, Gananoque Inn \$2.50 to \$4.00, Provincial \$1.50, Stevens, International \$1.50. Industries, 20, include cheese factory, clothes wringers, binges and nails, hammers, springs

and axles, cheese, shovels, grist mill, carriage wheels, rivets, corset steels, hame, bolt, and carriage forgings, builders' factory. Value manufactures, \$863,079 in 1901; \$1,384,116 in 1906. A summer resort. Alt. 306. Pop. 4,500.

SPECIAL OPPORTUNITIES.—Cheese box factory, malleable iron works, a good \$1 a day boarding-house. Factory of Canada Cabinet Co. for sale on G.T.R. Inducements offered on application. Write the Mayor, or Mgr. Bk. of Toronto.

GEORGETOWN (Halton Co.) on G.T.R. Can. Ex. Hotels, Bennett House \$1.50, Clark House. Industries include 2 paper mills, 2 knitting machine factories, boot and shoe factory, saw mill, glove factory, planing mill, acetylene gas machines, carriages. Alt. 846. Pop. 2,000.

SPECIAL OPPORTUNITIES.—Building mechanics' houses. Write Town Clerk, Georgetown.

GLENCOE (Middlesex Co.) on G.T.R., C.P.R. Can. Ex., Dom. Ex. Hotel, McKellar House. Industries, foundry and machine shop, glove factory, saw mill, builders' factory, woollen mill, flour mill. Alt. 728. Pop. 1,300. Write Mgr. Traders Bk., Glencoe.

GODERICH (Huron Co.) county town at mouth of Maitland River on Lake Huron, 133 miles n.w. of Toronto, on C.P.R., G.T.R., and Ontario and West Shore Electric Ry. in construction, boats to Detroit, Sarnia and South and Upper Lake ports. Dom. Ex., Can. Ex. Tel. C.P.R., G.N.W. Hotels, Bedford \$1.50, British \$1.50, and 7 others. Industries, flour mill, foundry, and machine shop, elevator, knitting factory, lumber mill, organ and bath fixtures, furniture, carriages, builders' factory, upholstery, salt works, tannery, clothing, apple evaporator. Value of manufactures, \$289,614 in 1901; \$2,206,847 in 1908. There is a good harbor, the best on east shore of Lake Huron. This is the best route to the Northwest for deep draught vessels, an excellent distributing point for grain, lumber, etc. Building active. The neighborhood supplies limestone, salt, lumber, sand suitable for glass or cement brick, clay suitable for tile and red or white brick. Mineral springs. Undeveloped rock salt mine, good farming country. A favorite summer resort, with a wonderful climate. Alt. 729. Pop. 5,600. (For particulars of salt industry see under Mining).

SPECIAL OPPORTUNITIES.—Sanitarium or summer hotel and cottages, with salt and mineral baths, finest

DESCRIPTIONS OF TOWNS

location in Canada—large house with park, terraces, lawns, and sandy beach at river mouth available, planing mills, canning industry, cheese factory, woodworking industries, hydraulic cement works, soda ash factory, glass factory, tile or brick industry. Inducements offered to new industries on application. Write the Mayor, or Mgr. Sterling Bank.

GOW GANDA (Dist. of Nipissing) on Lake Gow Ganda, first settled in 1908. Transportation in summer by canoe route from Elk Lake, 68 miles, 19 portages; in winter, stage from Elk Lake, 32 miles; nearest railway station at Charlton on T. & N.O. Ry., 56 miles. Hotels, King Edward \$2 and \$2.50, Baxter \$3 to 5, Barret \$2 to \$2.50. 3 banks, 7 general merchants, 4 druggists, 1 Presbyterian church tent. Centre of mining industry, (see under Mining). Pop., permanent, 450; about 3,500 prospectors in the woods. Write Pres. Gow Ganda Bd. Trade.

GRAND VALLEY (Dufferin Co.) on C.P.R. Dom. Ex. Good farming country. Peat found in neighborhood. Three grain elevators. Large peat beds near here. Write Mgr. Traders Bk., Grand Valley. Alt. 1,542. Pop. 850.

SPECIAL OPPORTUNITIES.—Brick and tile yard, grist mill, creamery. Write the Reeve.

GRAVENHURST (Simcoe Co.) at foot of Muskoka Lake, on G.T.R. Can. Ex. Tel. G.N.W. Hotels, Empress \$1.50, Albion \$1.50. For summer boarders and tourists only. Fern Glen, Sunset Pt., Gull Lake, Pine Dale, besides many other boarding-houses and summer resorts. 3 sanitariums for consumptives, 2 miles away, on shore of Muskoka Bay. Neighborhood supplies pine and hemlock timber, electric power. Industries include soda water, steel chairs and cabinet factory, carriages, boats, builders' factory, 2 lumber and saw mills, foundry. Value of manufactures, \$521,054 in 1901; \$734,039 in 1906. Up-to-date system of waterworks is being installed. Alt. 818. Pop. about 2,500.

SPECIAL OPPORTUNITIES.—Manufacturers using pine, hemlock and birch. Factory sites available near G.T.R. Water power 750 available, 4,000 to 5,000 h.p. undeveloped. Electric power from South Falls. Town offers tax exemptions or fixed rate, site or reduced power rates to new industries. Opportunities for summer cottages on Gull Lake, 300 yards from centre of town. Write Town Clerk, or Mgr. Dominion Bk.

GRIMSBY (Lincoln Co.) on the west shore of Lake Ontario, on G.T.R. Can. Ex. Hotel, Ye Old Village Inn \$2 up.

Electric Ry. from Hamilton. Methodist camp meeting ground adjoins. The surrounding country famous for peaches, grapes, apples. Industries, canning, baskets and crates, stoves. Alt. 287. Pop. 1,271.

GUELPH (Wellington Co.) incorporated as a city 1879. Hotels, Royal, Wellington, King Edward. On C.P.R. and G.T.R. Dom. Ex., Can. Ex. Tel. G.N.W., C.P.R. Centre of western peninsula of Ontario. Finest agricultural district in Ontario. 80 miles from Goderich, an important port for shipment to Northwest. The neighborhood supplies lumber, limestone, all kinds of farm products. The city owns its branch of the C.P.R., its waterworks, gas and electric lighting works, street railway and system of sewage. Electric power from Niagara is expected. Seat of Ontario Agricultural College and Macdonald Institute (Domestic Science). Students in 1909, 1,225. This institution is visited annually by 50,000 farmers. Seat of annual fat stock show, held in December; visited by from 10,000 to 20,000 farmers and stock breeders. Industries include piano and organ factory, knitting company, foundries, flour mills, carriage works, furniture, sewing machines, wrought pipe, carpets, stove foundries, axle works, radiators, cream separators, breweries, etc. Labor is 25c. a day cheaper than in Toronto. Labor troubles practically unknown. No scarcity of mechanics' houses. Value of manufactured products, \$3,689,183 in 1901; \$4,814,925 in 1906. Alt. 1,067. Pop. 14,060.

SPECIAL OPPORTUNITIES.—Agricultural implement factory, small automobiles, woodworking industry, manufacture of plumbing supplies, men experienced in iron business, radial railway. Write the Chairman Manufacturers' Committee, or Mgr. Imperial or Dominion Bks.

HAILEYBURY (Nipissing District) on Temiskaming and Northern Ont. Ry. Dom. Ex. Tel. T. and N.O. Five miles from Cobalt, steamer from Kippewa, and short line thence to Mattawa on C.P.R. Hotels, Vendome \$2.50 up, Attorney, Maple Leaf, Mattabanock. Town water and sewerage. Electric light, residential place of Cobalt. Agricultural district to north and west. Three saw mills. Pop. 4,000. Write Sec. Bd. Trade, Haileybury.

SPECIAL OPPORTUNITIES.—Pulp mill, real estate, mining properties. Write Sec. Bd. Trade, Haileybury.

HAMILTON (Wentworth Co.) on Burlington Bay, western extremity of Lake Ontario, founded about 1810, on G.T.R.,

DESCRIPTIONS OF TOWNS

T. H. and B., C.P.R., Am. Ex., Can. Ex., Dou. Ex. Tel. G.N.W., C.P.R. Hotels, Royal \$2.50 to \$4, Waldorf \$2 to \$3.50, Cecil \$1.50 to \$2, Terminal \$1.50 to \$2, New American \$1.50, Dominion \$1.25, Commercial \$1. Electric railways connect Dundas, Oakville, Bensenville, and Brantford. Power supplied by natural gas, and electricity from DeCew's and Niagara Falls. About 300 factories, including steel, iron, cotton, and woollen goods, agricultural machinery, elevators, boots, furniture, and many other articles. Value of buildings erected in 1906, \$2,124,815. Value of manufactured products, \$17,122,246 in 1901; \$24,625,766 in 1906. More United States capital has been invested in Hamilton than in all other cities in Ontario combined. Alt. 323. Pop. 67,268.

SPECIAL OPPORTUNITIES.—All kinds of industries utilizing cheap power, skilled mechanics, girls in factories. Write Assessment Commissioner, Hamilton, or Mgrs. Imperial, Dominion or Traders Bks.

HANOVER (Grey Co.) on G.T.R. and C.P.R., stage from Walkerton, 6 miles, and from Durham, 11 miles. Can. Ex. Hotel, Reid House. Industries, 5 furniture factories, bricks, cement, woollen mill, flour mill, builders' factory, shirt factory. Value of manufactures, \$450,016 in 1901; \$808,839 in 1906. Pop. 2,500.

SPECIAL OPPORTUNITIES.—Bedstead factory, white-wear factory. Write the Mayor, Hanover.

HARRISTON (Wellington Co.) on G.T.R., C.P.R. Tel. G.N.W. C.P.R. Can. Ex., Dou. Ex. Hotel, Royal \$1.50. Industries include stoves, pork packing, 3 saw mills, planing mill, furniture, wood novelties, grist mill, Casket Mfg. Co. Value of manufactures, \$575,930 in 1901; \$691,968 in 1906. Alt. 1,256. Pop. 1,700. Write Mgr. Standard or Traders Bks., Harriston.

HAWKESBURY (Prescott Co.) on G.T.R. and G.N.R. Tel. G.N.W., C.P.R. Dom. Ex., Can. Ex. Hotels, Canada Atlantic \$1.50, King Edward \$1.50, and 5 others \$1. Industries include clothing, sash and door factory, lumber mill, saw mill, woollen mill, paper mills, cheese factory, etc. Value of manufactures, \$1,101,049 in 1901; \$1,757,044 in 1906. Town has public, separate and high schools, electric light and power plant, 1 bank, customs house, stone and sand close by. Alt. 141. Pop. 4,500.

SPECIAL OPPORTUNITIES.—To new industries town offers exemption from taxes and other inducements. Write Town Clerk.

HEPWORTH (Grey and Bruce Cos.) on G.T.R., 12 miles w. of Owen Sound. Can. Ex. Tel. G.N.W. 3 churches,

1 bank, school and public library. Industries include furniture factory, grist and saw mills, brick making and lumbering. Town is lighted and heated by natural gas. Pop. 400.

SPECIAL OPPORTUNITIES.—Good openings for chair, upholstering and woodenware factories, and foundry. Free factory sites and tax exemptions offered to manufacturers. Natural gas supplied, 25c. per M. feet. Write the Reeve.

HESPELER (Waterloo Co.) on G.T.R., electric ry. to C.P.R. at Galt. Can. Ex., Dom. Ex. Limestone found in neighborhood, good farming district, electric power and light, supplied by Ry. Co. Industries, 9, include woodworking tools, power elevators, furniture, machine tools, 2 woollen mills, flour mill, builders' factory. Value of manufactures, \$925,634 in 1901; \$738,298 in 1906. Alt. 943. Pop. 2,700. Write Mgr. Dominion Bk., Hespeler.

SPECIAL OPPORTUNITIES.—To new industries town offers buildings and power. Write Mgr. Dominion Bk., Hespeler.

HUNTSVILLE (Muskoka Co.) on G.T.R., Lake of Bays Nav. Co. Can. Ex. Hotels, Vernon, Dominion, Kent. Timber, tan bark and minerals in the neighborhood. Industries, tannery, brick yard, woollen mill, foundry, 3 lumber mills, 4 saw mills. Value of manufactures, \$771,827 in 1901; \$1,601,250 in 1906. A beautiful summer tourist country. Alt. 957. Pop. 2,800.

SPECIAL OPPORTUNITIES.—Boot and shoe factory, tanneries, chemical company, woodworking industries, summer cottages and hotels. Inducements offered. Write Sec. Bd. Trade, or Mgr. Dominion Bk.

INGERSOLL (Oxford Co.) on G.T.R., C.P.R., T.L. and E. and P. Electric Railway to Woodstock. Tel. G.N.W., C.P.R. Can. Ex. Dom. Ex. Hotels, Atlantic \$1.50, New Daly. Industries, 35 factories, including tools, furniture, hay-forks, pianos, nuts, machine screws, cheese, pork packing, mowers, hearses, reapers, 2 builders' factories, 2 oatmeal mills, woollen mill, hawks, condensed milk, agricultural implements, fruit packages, flour mill, saw mill, planing mill, grist mill, knitted underwear. Value of manufactured products, \$3,232,609 in 1901; \$2,937,477 in 1906. Alt. 879. Pop. 5,000.

SPECIAL OPPORTUNITIES.—Manufacturers using agricultural products and wood. Electric power supplied \$45 per h.p. per annum, and up to 10c. per k.w. by Niagara Municipal Power Co. Factory sites on 2 railways.

DESCRIPTIONS OF TOWNS

Induc. ats offered on application. Write Pres. Bd. Trade, or Mgr. Traders Bk.

KEMPTVILLE (Grenville Co.) on C.P.R. Dou. Ex. Hotel. McPherson House \$1.50. Alt. 297. Pop. 1,525. Flour mill, electric light plant.

KENORA, formerly Rat Portage (Rainy River District) on Lake of the Woods, C.P.R., Rainy River Nav. Co. Dou. Ex. Hotels, Hilliard, King Edward, Commercial, Russell. 30,000 h.p. can be developed from 2 waterpowers, timber of all kinds found in neighborhood. A growing summer resort. Industries include flour mill, lumber mill, builders' factory, large reduction works. Alt. 1,088. Pop. 5,100.

SPECIAL OPPORTUNITIES.—Flour mills, boat building, pulp and paper mills, first-class hotel. Town offers cheap power and possibly free sites to industries. Write Sec. Bd. Trade, or Mgr. Imperial Bk.

KEEWATIN (Rainy River District) a beautiful summer resort on Lake of the Woods, 4 miles from Kenora, has 3 churches, 2 elevators (1,300,000 bus.), 2 flour mills, lumber yard, 2 hotels, bank, saw mills, newspaper, barrel factory. Pop. 1,200 in winter, about 1,700 in summer. Write C.P.R. Agent.

KINCARDINE (Huron Co.) on east shore of Lake Huron, G.T.R. Can. Ex. Hotel, Queen's \$1.50. Industries, chairs, boiler shop, furniture, salt well, grist mill, bricks, builders' factory. Value of manufactures, \$219,225 in 1901; \$202,369 in 1906. Alt. 587. Pop. 3,000. Write Mgr. Traders Bk., Kincardine.

KINGSTON (Frontenac Co.) on Catarqui River, where the St. Lawrence leaves Lake Ontario outlet of Rideau Canal, on G.T.R., Kingston and Pembroke Ry. Can. Ex., Dou. Ex. Steamers to Montreal and Toronto, seat of Queen's University and Royal Military College. Hotels, British American, Randolph, Iroquois, Anglo-American. Industries include builders' factory, 3 foundries, 2 broom factories, brewery, boat builders, locomotive works, tannery, cereal foods, boiler coverings, canoes, cigars, gunpowder, candles, pianos, flour mill, knitting factory, coal is cheap. Value of manufactures, \$2,045,175 in 1901; \$4,329,607 in 1906. Alt. 261. Pop. 19,193.

SPECIAL OPPORTUNITIES.—Another first-class summer hotel, brick factory. Write Sec. Bd. Trade.

KINGSVILLE (Essex Co.) on Pere Marquette Ry. Hotel, Exchange. Industries, brick and tile, woollen mill, cabinet

shop, builders' factory, foundry, canning, flour mill. Value of manufactures, \$116,762 in 1901; \$180,084 in 1906. Alt. 608. Pop. 1,500.

LAKEFIELD (Peterboro Co.) on the Otonabee River and Trent Valley Canal, G.T.R. Can. Ex. Steamer through Kawartha Lakes. Lakefield Boys' school, 50 students. Industries, Portland cement, canoes, flour mill, planing mill, cheese boxes. Alt. 770. Pop. 1,500. Write Mgr. Traders Bk.

LATCHFORD (Coleman Township, Nipissing District) on Montreal River, widening in Bay Lake, 9 miles south of Cobalt, on T. & N.O. S.S. line on Montreal River to Elk Lake. Hotels, King Edward \$2.00, Royal \$2.00. Railway station for Temagami Forest Reserve and Montreal River silver and gold fields. Industries, 2 saw mills, lumbering industry. Permanent pop. estimated at 652.

LEAMINGTON (Essex Co.) on M.C.R. and Pere Marquette Ry. Am. Ex., Can. Ex., Dom. Ex. Hotel, Huffman House. Neighborhood supplies tobacco, vegetables, corn, fruit, hogs, flax, sugar beets. Power from natural gas. Industries, grist mill, butter, tobacco factory, baskets, 3 foundries, creamery, planing mill, 2 saw mills, evaporator. Centre of tobacco industry. Value of manufactures, \$72,825 in 1901; \$286,428 in 1906. (For particulars of tobacco industry, see under Agriculture.) Alt. 626. Pop. 3,000.

SPECIAL OPPORTUNITIES.—Pork-packing plant, vegetable and fruit canning factory, flax mill, beet sugar factory, evaporator, pickle factory, cooper, plumber, boat builder, tobacco growing. Town offers exemptions and probably loans. Write the Mayor, or Mgr. Traders Bk.

LINDSAY (Victoria Co.) on the Trent Canal, G.T.R., C.P.R. Can. Ex., Dom. Ex. Steamers on Scugog Lake. Hotels, Benson House, Simpson House. Electric power \$18 per h.p. up. Industries, lumber mill, tannery, aerated waters, 2 saw mills, canoes, mill machines, brewery, 2 flour mills, woollen mill, 4 builders' factories, veneer factory, agricultural implements, wheel factory. Neighborhood supplies wood, marl building stone. Value of manufactured products, \$1,775,427 in 1901; about \$2,000,000 in 1909. Alt. 854. Pop. 7,500.

SPECIAL OPPORTUNITIES.—Woodworking industries using cull stock, tool factory, industries requiring female help. Beet sugar factory. Roots could be carried 70 miles on scows. Write the Mayor, or Mgr. Dominou Bk.

DESCRIPTIONS OF TOWNS

LISTOWEL (Perth Co.) on G.T.R. Can. Ex. Hotel, Arlington. Industries, 2 builders' factories, woollen mill, chairs, pianos, furniture, brewery, tannery, flour and oatmeal mill. Alt. 1,262. Pop. 3,000. Write Mgr. Imperial Bk., Listowel.

LONDON (Middlesex Co.) on River Thames. On C.P.R., G.T.R., M.C.R., P.M.R., London and W. Traction Co. Dom. Ex., Can. Ex., Am. Ex., U.S. Ex. Tel. G.N.W.. C.P.R. Hotels, Tecuinseh \$2 to \$3, Grigg House \$2, Dominion \$1.50 to \$2. Industries, 200 factories, including iron, wood, leather, brass, cigars, cigar boxes, chemicals, breweries. Centre of rich farming district. Seat of West-cru University, about 200 students. Seat of Anglican and Roman Catholic bishops. Important railway junction. Real estate transfers in 1908, \$1,294,650. Value of buildings erected, \$639,800 in 1908. Assessment rolls show that in 1908, of 14,612 voters, about 6,891 owned their own homes. Manufacturing and wholesale houses employ 13,725 people. Exports in 1908, 350,000 tons; imports, 593,190 tons. Value of manufactured products, \$8,122,185 in 1901; \$13,685,849 in 1908. Alt. 809. Pop. with suburbs 52,000.

SPECIAL OPPORTUNITIES.—Manufactures of all kinds. Living is cheap. Write the Mayor.

L'ORIGINAL (Prescott Co.) on the surveyed line of C.N.R., half way between Montreal and Ottawa. Lumber of all kinds obtainable. Pop. 1,150.

SPECIAL OPPORTUNITIES.—Furniture and woodenware factories, vitrified brick, summer hotel. Write the Reeve, or Mgr. Sterling Bk.

LUCKNOW (Huron Co.) on G.T.R. Daily stage from Goderich. Hotel, Cain House. Industries, apple evaporator, woollen mills, tables, saw mill, builders' factory, flour mill. Alt. 908. Pop. 1,200.

MATTAWA (Nipissing District) at junction Mattawa and Ottawa Rivers, 45 miles east of North Bay, on C.P.R., at east end of Lake Nipissing. Dom. Ex. Tel. C.P.R. Hotel, Victoria \$1.00. Industries, 1 shingle mill, 1 saw mill, 1 hank. Alt. 564. Pop. 1,500.

MEAFORD (Grey Co.) on the Georgian Bay, G.T.R.; daily stage to Owen Sound, 20 miles. Can. Ex. Five boats weekly to West. 20 ft. water in harbor, electric power. Hotel, Paul's, Queen's. Industries, foundry and machine shop, flour mill, box factory, canning factory, furniture, wheelbarrows, blankets and yarns, flooring, 3 fruit evap-

orators, 2 builders' factories, 2 tanneries, grain elevator. Value of manufactures, \$228,025 in 1901; \$930,000 in 1909. Alt. 672. Pop. 2,800.

SPECIAL OPPORTUNITIES.—Saw mill, chair factory, iron beds, woodworking factory, boat builder. Town offers free sites, free water, exemption from taxes, possibly free loan. Write the Mayor, Meaford.

MERRITTON (Lincoln Co.) on G.T.R. and Welland Canal. Can. Ex. Electric line from St. Catharines. Hotel, Union. Industries, bentwood, 2 paper mills, carbide factory, foundry and wire rope works, planing mill. Alt. 389. Pop. 2,000.

SPECIAL OPPORTUNITIES.—To new industries town offers inducements, abundant water power and good railway facilities. Write Bk. of Toronto at St. Catharines.

MIDLAND (Simcoe Co.) on the Georgian Bay, G.T.R. Can. Ex. Hotels, Gladstone, Queen's, \$1.50, \$2.00. Industries, 3 large elevators, iron smelters, 4 lumber mills, foundry and machine shop, box shook factory, woollen mill. Power from Severn River in 1910. Value of manufactures, \$1,638,312 in 1901; \$1,807,110 in 1906. Alt. 593. Pop. 4,200. Write Sec. Bd. Trade.

SPECIAL OPPORTUNITIES.—Stove factory, electrical works, building mechanics' houses. Write Town Clerk, Midland.

MILLE ROCHES (Stormont Co.) on Cornwall Canal (St. Lawrence River) and G.T.R., 72 miles from Montreal. Can. Ex. Tel. G.N.W. Hotel, Albion \$1.00. 2 churches (R.C. and Meth.), 1 bank, paper mills, Power Co. and chemical laboratory. Pop. 800. Write Mgr. Sterling Bk.

MILTON (Halton Co.) on C.P.R., G.T.R. Tel. G.N.W., C.P.R. Can. Ex., Dom. Ex. Hotels, McGibbon, New Royal, Commercial \$1. Industries, carpets, saw mill, patent medicines, creamery, brick yard, flour mill, pressed brick, planing mill, boots and shoes. Alt. 660. Pop. 1,800.

SPECIAL OPPORTUNITIES.—For manufacturers there are good shipping facilities. Mortgages on farm property. Write the Reeve, Milton.

MITCHELL (Perth Co.) on G.T.R. Can. Ex. Hotel, Hicks. Industries, knitting mill, builders' factory, flax mill, machine shop, brick and tile plant, woollen mill, cheese factory, flour mill, oatmeal mill. Value of manufactures, \$237,927 in 1901; \$236,492 in 1906. Alt. 1,121. Pop. 2,000.

MORRISBURG (Dundas Co.) on the St. Lawrence River, G.T.R. Can. Ex. Hotels, St. Lawrence \$1.50, Windsor \$1.50.

DESCRIPTIONS OF TOWNS

Electric power, good dairy district. Industries include sheet and galvanized steel, stoves, poultry fattening, foundry and machine shop. Alt. 268. Pop. 1,600.

MOUNT FOREST (Wellington Co.) on C.P.R., G.T.R. Tel. G.N.W., C.P.R. Dom. Ex., Can. Ex. Hotels, Queen's \$1 to \$1.50, Coyne \$1 to \$1.50. Industries include foundry, caskets, planing mill, carriages, grist mill, woollen mill, brick yard. Value of manufactures, \$244,258 in 1901; \$494,034 in 1906. Alt. 1,348. Pop. 2,500.

SPECIAL OPPORTUNITIES.—Organ and piano case factory. By damming 90 h.p. available. Write the Mayor.

NAPANEE (Lennox Co.) on G.T.R. main line, Bay of Quinte Ry. connecting with C.P.R. at Tweed. Can. Ex., Dom. Ex. Tel. G.N.W., C.P.R. Hotels, Campbell House \$1.50, Paisley House \$1.50. County seat. Centre of good farming district, specially adapted to raising vegetables; brick clay and cement clay found; water power in Napanee River, cost \$20 per h.p. Industries include 2 flour mills, foundry and machine shop, foundry, cannery, brick and tiles, saw mill, two builders' factories, creamery, furniture factory, elevator. Water power controlled by Messrs. Dafoe and Waller, cost to large consumers under \$20 per h.p. Alt. 313. Pop. 4,000.

SPECIAL OPPORTUNITIES.—Cement works, brick yard, canning factory. Inducements on application. Write Town Clerk, or Mgr. Dominion Bk.

NEWCASTLE (Durham Co.) on G.T.R., 47 miles east of Toronto, with a harbor on Lake Ontario. Can. Ex. Tel. G.N.W., C.P.R. Hotel, Oriental. 4 banks. A large apple-growing district. 4 churches. Chief industries include chop mill, 2 elevators. Alt. 295. Pop. 665.

SPECIAL OPPORTUNITIES.—Creamery and cheese factory. $\frac{3}{4}$ mile from railway, and $1\frac{1}{4}$ miles from harbor. Village has electricity and 27 h.p. undeveloped. Write Town Clerk, or Mgr. Traders Bk.

NEW HAMBURG (Waterloo Co.) on G.T.R. Can. Ex. Tel. G.N.W., C.P.R. Hotel, Queen's \$1. Industries include builders' factory, pottery, metal trunk trimmings, cheese, felt boots, threshing machines, brass works, tannery, brewery, flour mills. Pop. 1,500.

NEW LISKEARD, at head of Lake Temiskaming, on T. & N.O. Ry., steamers to Kippewa, connecting by short line with C.P.R. at Mattawa. Tel. T. & N.O. Hotel, Grand Union, \$2.50. Large settled agricultural district and

extensive clay belt at present covered with pulpwood. Town has electric light and water service. A profitable business done fitting out prospectors. Industries, 5 saw mills, brick fields, clock factory, foundry. Electric power, 20,000 h.p. can be developed 12 miles distant. Pop. 3,000.

SPECIAL OPPORTUNITIES.—Furniture factory, brick yards, planing mills, foundry, grist mill, huilders all kinds, laborers, pulp and paper mill, dairy and truck farming to supply Cobalt mining camps. Write Sec. Bd. Trade, or Mgr. Imperial Bk.

NEWMARKET (York Co.) on G.T.R. Tel. G.N.W. Can. Ex. Electric railway to Toronto, 34½ miles. Hotel, Forsythe House \$1.50. Industries, tannery, grist mill, office specialties, bricks, woodenware. Alt. 772. Pop. 3,000.

SPECIAL OPPORTUNITIES.—Boot and shoe factory, beet factory. Power 10c. per M. watts per annum. Exemption, possibly bonus, offered. Write the Mgr. Bk. of Toronto.

NIAGARA FALLS (Welland Co.) Hotels, Clifton House, Prospect, Savoy, Windsor, New Rosli, Lafayette, Hospice. On G.T.R., M.C.R., C.P.R., Erie Ry., N.Y.C. and H.R.R., Lehigh Valley, Lake Shore, R.O. & W., Washash, Pere Marquette, International Traction (electric), N.S. & P. (electric). Dom. Ex., Can. Ex., Am. Ex. Tel. G.N.W., C.P.R. In neighborhood is found Queenston limestone, brick clay, building sand, and gravel. Power is supplied by natural gas, rate 32c. per M. feet, and three electric companies generating from Niagara Falls; present cost \$10 to \$17 per h.p. per annum. Industries include cereal foods, carborundum, suspenders, neckwear, wire chain, silverware, furnaces and heaters, cannery, creamery, flour mill, planing mill, 2 huilders' factories, foundry and machine shop. Value of manufactured products in 1901, \$422,728; \$774,142 in 1906. Alt. 573. Pop. 12,000. (For particualars of Niagara Falls, see under Canals and Waterways.)

SPECIAL OPPORTUNITIES.—Iron and steel industries, textile and other manufacturing industries, contractors, builders, real estate, building houses and business blocks for sale or rental. Town offers manufacturers fixed assessment or exemption from taxation for a term of years, and free sites.

NORTH BAY. (Capital of Nipissing Dist.) on Lake Nipissing,

DESCRIPTIONS OF TOWNS

G.T.R., T.N.O., C.P.R. Dom. Ex., Can. Ex. Tel. C.P.R., G.N.W. Hotel, Queen's. A lumbering and mining district. Industries, 2 planing mills, lumber company, foundry and machine shop, 2 saw mills, and smelter. Alt. 659. Pop. 9,500.

SPECIAL OPPORTUNITIES.—Iron industries, boots and shoes, clothing. Power being brought in from South River. 4,000 h.p. available, rates \$50 per h.p. per annum. Inducements granted on application. Write Sec. Bd. Trade, or Mgr. Traders or Imperial Bk.

NORWICH (Oxford Co.) on Otter Creek and G.T.R., 17 miles s.e. of Woodstock. Can. Ex. Tel. G.N.W. Hotel, Dak House \$1, \$2. 5 churches, 2 banks, public schools. Industries include broom factory, cider and vinegar works, saw, flour and planing mills, 2 iron foundries, cheese factory. Fine fruit country. Alt. 846. Pop. 1,200.

SPECIAL OPPORTUNITIES.—Good factory sites available, with railway sidings. Niagara power expected. Free sites and tax exemptions offered manufacturers. Write the Reeve, or Mgr. Traders Bk.

OAKVILLE (Halton Co.) on G.T.R. Tel. G.N.W. Can. Ex. On Lake Ontario. Hotel, Royal Exchange. Industries include neckwear, planing mill, acetylene gas machines, tanning, baskets, boat building. Value of manufactures, \$267,342 in 1901; \$492,200 in 1906. Alt. 329. Pop. 2,000.

SPECIAL OPPORTUNITIES.—Real estate investments. Inducements offered to new industries. Write Mgr. Bk. of Toronto.

ORANGEVILLE (Dufferin Co.) on C.P.R. Dom. Ex. Hotel, Queen's \$1.50. County seat. Industries include 2 foundries and machine shops, furniture, cement, builders' factory, woollen and chop mill, flour mill. The Dufferin L. & P. Co. and the Cataract Electric Co. supply light and power, good water supply. Alt. 1,395. Pop. 3,000.

SPECIAL OPPORTUNITIES.—Boot and shoe factory, carriage factory, stove works, 2 buildings available. Write Mgr. Sterling Bk.

ORILLIA (Simcoe Co.) on Lake Couchiching. On G.T.R., steamers to Barrie, C.P.R. and C.N.R. building lines into town. Hotels, Orillia House \$2, New Daly House, Victoria \$1 to \$1.50. Electric power, about 1,800 h.p. available, supplied to manufacturers at \$16 per h.p., 24 hour service, per annum. Favorite summer resort,

good boating, fishing, fair golf course. Industries include cheese hoop and heading factory, clothing factories, 2 flour mills, 3 machine shops, builders' factory, woollen mills, aerated water, tannery, pulp mill, saw mills, carriage works, furniture, brewery. Surrounding country is an excellent farming and fruit district. Value of manufactured products, \$836,491 in 1901; \$1,119,825 in 1906. Alt. 732. Pop. 5,900.

SPECIAL OPPORTUNITIES.—The opening of factories of various kinds. Why? Because the town offers free factory sites, exemptions or free assessment, cheap electric power, cheap light, and water, with continuous service. Excellent railway service with Northwest. Write Sec. Bd. Trade, or Mgr. Traders or Dominion Bks.

OSHAWA (Ontario Co.) on G.T.R. Can. Ex. Hotels, Queen's, Commercial. Local industries include grist mill, foundry, carriage works, canning factory, automobile works, hearses and carriages, wrought iron works, flour mill, wire fence, tannery, knitting factory, feed and butter carriers, builders' factory, pianos, machine shop. Neighborhood supplies products of farm for canned goods, hardwood, sugar beet of high grade. Fine apple district. Value of manufactured products, \$1,343,100 in 1901; \$2,298,660 in 1906. There are no union shops. Strikes almost unknown. Cheap house rent. Alt. 331. Pop. 6,000.

SPECIAL OPPORTUNITIES.—Factories, cheese factory, cars, boots and shoes, beet sugar, furniture, plumbing outfits, pork factory, summer hotel. Town offers liberal inducements on application. Write the Mayor, or Mgr. Dominion Bk.

OTTAWA (Carleton Co.) on Ottawa River. Made capital of Canada in 1857. On C.P.R., G.T.R., C.N.R., Ottawa and N.Y. Ry., Am. Ex., Can. Ex., Dom. Ex. Electric railway to Hull, Britannia and Aylmer. Steamers to Montreal and Kingston, through Rideau Canal. Tel. G.N.W., C.P.R. Hotels, Russell \$1 to \$3.50, European plan; Grand Union, Windsor \$2 to \$2.50, Alexandra \$1.50. Official seat of Governor-General. Seat of Federal Government. National Victoria Museum, National Art Gallery, Central Canada Experimental Farm, Royal Observatory, Royal Mint, Agricultural and Industrial Exhibition and Fat Stock Show of Eastern Canada; Anglican and R.C. cathedrals; Ottawa University (R.C.). 500 students. Industries, about 100 factories, including wood products, two steel engraving plants, foundries,

DESCRIPTIONS OF TOWNS

clothing, mica. Neighborhood supplies lumber, silver, nickel, iron, zinc, argentiferous galena, phosphate of lime, mica, plumbago, quartz, feldspar, fluorspar, asbestos, molybdenite, corundum, granite, marble, sandstone, pottery clay, marl, peat. Power, water, 100,000 h.p. within city limits; 1,000,000 h.p. within 45 miles; 50,000 h.p. developed. Cost \$15 per h.p. per annum. Value of buildings erected in 1908, \$1,794,075. Value of manufactured products, \$7,638,689 in 1901; \$9,336,024 in 1906. Clearing House returns, 1908, \$154,367,756. Alt. 247. Pop. 85,000.

SPECIAL OPPORTUNITIES.—Development of power, lumber, pulp and paper mills, woodworking and box factories, clay, sewer pipe and cement works, barrels, furniture, wood alcohol, turpentine, vegetable cannery, pottery, iron industries, creamery. The city has purchased a tract of land adjoining the railway for sites. Power is cheap, and inducements are offered on application. It pays to be established at the capital. Write the Mayor.

OWEN SOUND (Grey Co.) at mouth of Sydenham River on Georgian Bay, 122 miles n.w. of Toronto on C.P.R. and G.T.R. Dom. Ex. Can. Ex. Tel. C.P.R., G.N.W. S.S. lines to lake ports, Northern Navigation Co., Canadian Pacific R.R., Dominion Transportation Co. County town. Hotels, Queen's \$1.50, Seldon House \$2, Patterson House \$2. Industries, 3 Portland cement plants, 1 chair, 1 table, 2 tanneries, 1 woodenware, 1 basket, 1 mill machinery, 1 turbine water wheels, 1 wire fence, 1 tweed or other woollen cloths, 3 agricultural implements, 1 brewery, 2 brick, 2 lime, 6 saw mills, 1 stove plant, 5 grain elevators and warehouses, cold storage plants. Best harbor on Lake Huron. Sound is 12 miles long, navigable for largest vessels. Pop. 12,500.

SPECIAL OPPORTUNITIES.—Agricultural implement factory, organ and piano factories, foundries, shipbuilding, carriage factories, furniture factories. Write Chairman Industrial Committee.

PAISLEY (Bruce Co) at confluence of Sauguen and Teeswater Rivers. On G.T.R., 30 miles s.w. of Owen Sound. Can. Ex. Tel. G.N.W. Hotel, Balmoral, 4 churches, 2 banks, public school, and public library. Industries include 2 saw, 2 grist, 2 woollen mills, 1 brick and 1 carpet factory, pork factory (idle), iron factory and machine shop. Alt. 773. Pop 850.

SPECIAL OPPORTUNITIES.—Woollen mill and carpet factory will be given away as inducements to settle in

Paisley. Good factory site on G.T.R. for manufacturers. Tax exemption, free water, and free sites offered. Power, water, developed 75 h. p.; undeveloped, 1,000 to 2,000 h.p. Town is lighted by electricity. Write Town Clerk, or Mgr. Traders Bk.

PALMERSTON (Wellington Co.) on G.T.R. Can. Ex. Tel. G.N.W. C.P.R. Hotel, Queen's. Industries include malt house, 2 builders' factories, packing house, grist mill, Alt. 1,313. Pop. 2,000. Write Mayor, Palmerston.

PARIS (Brant Co.) on G.T.R., Grand Valley Electric Ry. from Brantford to Galt. Dom. Ex., Can. Ex. Tel. G.N.W., C.P.R. Hotel, Arlington. Gypsum and lime found in neighborhood. Industries include alabastine works, flour mill, plow company, woollen cloth mill, knitting factory, foundry, needles, refrigerators and screen doors. Alt. 843. Pop. 4,000.

SPECIAL OPPORTUNITIES.—Dry goods, boots and shoes, any mercantile line except groceries. Development of sulphur springs. Write the Mayor.

PARKHILL (N. Middlesex Co.) on G.T.R., 40 miles from Stratford and Sarnia, 31 miles n.w. of London. Can. Ex. Tel. G.N.W. Hotels, Hastings House, Arlington and Schafer. Industries, 1 flour mill, 2 planing mills, 1 door factory, 1 foundry, woollen mill, saw mill, 2 elevators, evaporating co., flax mill, brick machines. Alt. 662. Pop. 1,750.

PARRY SOUND (Parry Sound District) on G.T.R., C.N.O.R. Tel. G.N.W., C.N.R., C.P.R. Can. Ex., C.N.R. Ex. Situate on Parry Sound at mouth of Sequin River, opposite Parry Island on Georgian Bay and Lake Huron. Steamers of Northern Nav. Co. from Collingwood, Midland, Penetang and other lake ports. An excellent harbor. Hotels, Victoria House \$1.50, Mansion House \$1.00, Bellevedere \$2 to \$3. Industries, composite bricks, 5 saw mills, soda water boxes, veneer. Alt. 602. Pop. 4,500.

SPECIAL OPPORTUNITIES.—Summer hotels, tannery, flour mill, wood-alcohol, furniture, industries using hardwood. Good sites on water front. Railway spur building. Inducements on application. Write Sec. Bd. Trade, or Mgrs. Bk. Toronto or Ottawa.

PEMBROKE (Renfrew Co.) on Alouette Lake, on C.P.R., branch connection with G.T.R., steam ferry to Alouette Island, steamer to Desiouchines. Can. Ex., Dom. Ex.

DESCRIPTIONS OF TOWNS

Hotel, Copland House \$2. County seat, chief place in Upper Ottawa Valley, good trout fishing. Industries include 3 lumber mills, 2 builders' factories, machine shop, stoves, carriages, cream separators, lumbering tools, woollen mill, saw mill, bricks, mocassins, glove, leather, tannery, incubator factory. The Central Military Camp is situated at Petawawa, 10 miles. Electric power supplied by Pemhroke Power Co. Alt. 381. Pop. 6,000.

SPECIAL OPPORTUNITIES.—Woodenware, woollen and carding mill, electric power supplied at reasonable rates. Write the Mayor, Pemhroke.

PENETANGUISHENE (Simcoe Co.) on inlet of Georgian Bay, on G.T.R. Can. Ex. Hotels, Penetanguishene \$2 up (in summer), and 4 others. A summer resort. Industries include 2 lumber mills, 1 tannery, 5 saw mills, 5 builders' factories, launch engines, boxes, carriages, foundry, boat and canoe factory. Town has 4 churches, Carnegie library, public, separate and high schools, electric light. Alt. 589. Pop. 2,500.

SPECIAL OPPORTUNITIES.—Cement works, woodenware industries. Town offers inducements, good sites, shipment by rail and water. Write the Reeve, Penetanguishene.

PERTH (Lanark Co.) on C.P.R. Dom. Ex. Tel. G.N.W., C.P.R. Hotel, Hicks House \$1.50. Good farming district. Industries include saw mill, 3 foundries, 2 distilleries, chairs and cots, sash and window locks, sash distilleries, cheese, butter, flour mill, felt factory, bricks, knitting mills, chemical works. Alt. 433. Pop. 3,600. Write Sec. Bd. Trade, Perth.

PETERBOROUGH (Peterborough Co.) on Otonahee River. Hotels, Oriental \$2 to \$2.50, National \$1.50 to \$2, Snowdon \$2, Commercial. On C.P.R., G.T.R. and branches, Trent Waterway. Stages from Bobcaygeon, Apsley, Norwood and Keene. Dom. Ex., Can. Ex. Tel. G.N.W., C.P.R. The neighborhood supplies iron ore and all kinds of timber. Electric power developed on Otonahee River. The distributing point of a flourishing agricultural district. Seat of R.C. cathedral. There are about 35 factories, including harness, cereal foods, electric machinery and supplies, mining and mill machinery, lumber mills, canoe factories, pork packing, locks, flour mills, shovels, agricultural implements, cordage, clothing, carpets, rapid tools, tents and sails. Value of buildings erected in 1908, \$239,000. Alt. 649. Pop. 16,907.

(For details of lift lock here, the largest in the world, see under Canals and Waterways, Heaton's Annual, 1910.)

SPECIAL OPPORTUNITIES.—Iron industries, industries using wood, tanneries. City offers to manufacturers free sites, with fixed assessment on land without improvements for 10 years. Write City Clerk, or Mgr. Dominion Bk.

PETROLEA (Lambton Co.) on G.T.R., Mich. Central Ry. Tel. G.N.W., C.P.R. Can. Ex., Am. Ex. Hotel, Iroquois. Centre of oil district, fine farming district. Industries include 2 nitro-glycerine factories, oil refinery, oil well supplies, 2 elevators, grist mill, chop mill, 2 boiler works and machine shops, wagons, butter factory. Alt. 667. Pop. 4,200. (For particulars of petroleum industry, see under Mining.)

SPECIAL OPPORTUNITIES.—Oil investments, oil prospecting, any kind of industry. Write Sec. Bd. Trade, or Mgr. Bk. of Toronto.

PICTON (Prince Edward Co.) on C.O.R. Tel. G.N.W., C.P.R. Dom. Ex., Can. Ex. Hotels, Globe \$1.50, Tecumseh \$1.00, Royal \$1.00. Ontario & Quebec Navigation Co. steamers to Montreal, Quebec and Rochester, N.Y. Industries include foundry, fruit canning, extracts, planing mill, boat building, bricks. Value of manufactures, \$368,157 in 1901; \$809,385 in 1906. Alt. 322. Pop. 4,000. Write Pres. Bd. Trade, Picton.

PORT ARTHUR (Thunder Bay Dist.) on shore of Thunder Bay, at head of Lake Superior, head of navigation on the Great Lakes. On C.P.R., and lake terminus of C.N.R. Dom. Ex., C.N.R. Ex. Tel. C.P.R., C.N.R. Hotels. Algoma \$2, Mariaggi \$2. Judicial centre for the district. Port of entry. City owns and operates electric railway, which runs through the city of Fort William, also electric lighting system, telephone system and waterworks. Electric power supplied to manufacturers at from \$12 to \$25 per h.p.; 2,500 h.p. developed; 10,000 h.p. available for development. Industries include blast furnace, 2 boiler works, 2 saw mills, 2 foundries, 2 elevators, sash and door factory, stock yards, 2 brick factories, brewery, aerated water factory, stone-cutting establishment, 3 transshipping freight houses, 2 systems cold storage, lake fisheries. Alt. 608. Pop. 13,750.

SPECIAL OPPORTUNITIES.—Iron and steel industries, furniture and woodenware factories, pork packing, shipbuilding, forwarding houses. The city owns a water power, electric plant with 25,000 b.p. 14,000 acres of

DESCRIPTIONS OF TOWNS

land and water front for factories. Write Pres. Bd. Trade.

PORT BURWELL (Elgin Co.) on Big Otter River and C.P.R., 19 miles from Tillsonburg. Dom. Ex. Tel. C.P.R. Hotel. Commercial \$1.25. 3 churches, 1 bank, 1 grist mill. Alt. 580. Pop. 500.

SPECIAL OPPORTUNITIES.—Brick tiles, iron and steel factories. Cheap fuel by ear ferry from Ohio mines. Inducements on application. Write Mgr. Sterling Bk.

PORT COLBORNE (Welland Co.) on Lake Erie at mouth of Welland Canal, on G.T.R. Can. Ex. Hotel. Commercial \$1.25. Limestone found in neighborhood. Power, electric from Niagara and natural gas costing 20c. per M. cuh. feet, equal to \$4.80 per an. Good harbor, depth 22 ft., large docking facilities. Industries include planing mill, brewery and malting house, plumbers' brass works, grist mill. Alt. 580. Pop. 1,500.

SPECIAL OPPORTUNITIES.—Steel and iron industries. Write Mgr. Imperial Bk.

PORT DALHOUSIE (Lincoln Co.) on Welland Canal and G.T.R. and Niagara Central Ry. Can. Ex. Tel. G.N.W. Hotels, Austin House and 2 others. 2 daily steamers to Toronto in summer. Electric cars to Niagara and St. Catharines. Industries, 1 saw mill, 1 rubber factory, 1 ship yard, 1 Government gate yard, 1 grain elevator, 1 coal dock elevator. Alt. 249. Pop. 1,200. Write Mgr. Sterling Bk.

PORT ELGIN (Bruce Co.) on Lake Huron, on G.T.R. Tel. G.N.W. Can. Ex. Hotels, Queen's \$1, Arlington \$1. Industries, woollen factory, flour mill, pumps, pressed steel, saw mill, planing mill, bricks, brushes, tannery. Alt. 673. Pop. 1,700.

PORT HOPE (Durham Co.) on Lake Ontario and Ganeraska River. On G.T.R., 63 miles east of Toronto. Can. Ex. Tel. G.N.W. Hotels, Queen's \$1.50 to \$2. St. Lawrence Hall \$1.50 to \$2. Steamer daily to Rochester. Seat of Trinity College School for boys, 150 pupils; high school, central and 2 primary schools, 6 churches, 3 banks, library, opera house. Industries include preserving and canning, enamelware, iron sewer pipe, plumbers' supplies, threaded pipes and connecting iron works, tanneries, foundry, file factory, flour and plaster mills, brewery, pottery and red brick plant, planing mill, machine shops, large greenhouses, lace and carpet mills, carriage and implement factories, creamery. Good farming district.

Town has fine harbor, waterworks, and is lighted by electricity and gas. Alt. 265. Pop. 5,000.

SPECIAL OPPORTUNITIES.—Metal working factories. Erection mechanics' houses. Inducements on application. Write for pamphlet to Sec. Bd. Trade, or Mgr. Bk. of Toronto.

PORT PERRY (Ontario Co.) on Lake Scugog, 1½ hours from Toronto, on G.T.R. Tel. G.N.W. Can. Ex., Dom. Ex. Hotels, St. Charles \$1.50, Oriental \$1.50. Good duck shooting and fishing. Alt. 829. Pop. 1,500.

PRESCOTT (Grenville Co.) on St. Lawrence River and C.P.R. and G.T.R., 12 miles east of Brockville. Can. Ex., Dom. Ex. Tel. G.N.W., C.P.R. Hotel, Daniels \$2. Foot of lake navigation on St. Lawrence River, and port of call of all boats, and car ferry to New York Central summer and winter, and Ogdensburg. 4 churches, 2 banks, public, high and separate schools, opera house and public library. Industries include emery wheels, casket, creamery, distillery, grain elevator (cap. 1,000,000 bus.), planing mill, brewery, etc. Government marine works is situated here. Alt. 247. Pop. 3,000.

SPECIAL OPPORTUNITIES.—Branch factories of American firms. Town has direct car ferry connection all the year with U.S. railways, and large undeveloped power. Factory building on C.P.R. track and brick yard plant for sale. Inducements on application. Write Sec. Bd. of Trade.

PRESTON (Waterloo Co.) on G.T.R. and C.P.R. Tel. G.N.W., C.P.R. Dom. Ex., Can. Ex. Visited for its mineral springs. Hotels, Del Monte \$1.50, \$2.00, Commercial \$1.00. Electric lines to Berlin and Galt, Hespeler, Paris, Brantford. Industries, woodworking machinery, office and school furniture, cigars, grist mill, foundry, hay machinery, planing mill, metal shingles and sidings, woollens, brushes, agricultural implements, woollen mill, piano-players, 2 furniture factories. Alt. 925. Pop. 3,500.

SPECIAL OPPORTUNITIES.—Manufacturers are offered cheap labor, no unions, low taxation, good shipping facilities and hydro-electric power in near future. 500 acres of factory sites between C.P.R. and G.T.R. Tax exemptions, loans, free water, free sites, offered to new industries. Write Sec. Bd. Trade, or Mgr. Bk. of Toronto.

RAINY RIVER (Rainy River Dist.) on C.N.R. Tel. C.N.R. C.N.R. Ex., Dom. Ex. Boat from Kenora, 87 miles, situate on Rainy River, navigable. Hotels, Canadian

DESCRIPTIONS OF TOWNS

Northern and Riverview \$1.00 to \$1.50. Divisional point of C.N. Ry. Excellent farming district, which supplies pine, tamarac, cedar, spruce, poplar, birch, ash, and elm, hides and furs. Industries, 2 lumber mills, capacity one million feet every three days, small railway centre, excellent fishing. Alt. 1,073. Pop. 2,020.

SPECIAL OPPORTUNITIES.—Stove factory, box factory, brick making, tannery, all industries connected with manufacture of lumber, laborers. Inducements offered to manufacturers on application. Write Town Clerk.

RENFREW (Renfrew Co.) on C.P.R., K. & P.R., G.T.R. Tel. G.N.W., C.P.R. Can. Ex., Dom. Ex. Hotels, Dominion \$1.50, Ottawa \$1.50. Industries include refrigerators, bricks and tiles, foundry, woollen mills, sash and door factory, flour and knitting mills, nurseries, power company, planing mill, saw mill, laundry, separator factory and creamery. Value of manufactures, \$379,525 in 1901; \$692,362 in 1906. Alt. 416. Pop. 3,800.

SPECIAL OPPORTUNITIES.—To new industries cheap power will be furnished from a dam about to be built in the river. Write Town Clerk, Renfrew.

RIDGETOWN (Kent Co.) on M.C.R. and Pere Marquette Rys. Can. Ex., Am. Ex., U.S. Ex., Dom. Ex. Tel. G.N.W. Hotels, Arlington \$1.50, New Lozer \$1.00. Industries include planing mill, bricks, cooperage, clothing, flour mill, creamery, machinery works. Value of manufactures, \$285,850 in 1901; \$290,902 in 1906. Alt. 657. Pop. 2,200. Write Pres. Bd. Trade, or Mgr. Traders Bk., Ridgetown.

ROCKLAND (Russell Co.) on G.T.R. Tel. G.N.W., C.P.R. Can. Ex. Hotel, Rockland \$1.00. Industries, lumber mill, planing mill, saw mill, flour mill. Value of manufactures, \$750,450 in 1901; \$1,247,800 in 1906. Pop. 2,969.

SPECIAL OPPORTUNITIES.—To new industries town offers tax exemptions and bonus. Write the Reeve, Rockland.

ST. CATHARINES (Lincoln Co.) on G.T.R. and Welland Canal, connection with C.P.R. by Niagara, St. C. and Toronto Ry., steamer to Toronto. Can. Ex., Dom. Ex. Hotels, The Welland (combination hotel and sanitarium) \$2.50, \$3.50, Grand Central \$1.50. Saline Springs are efficacious in rheumatism, gout and skin diseases. Seat of Bishop Ridley College (Church of England), 150 boys, centre of Ontario fruit belt. Industries about 35, include 2 paper mills, flour mill, planing mill, hair cloth, wine, metal

works, biscuits, 2 canning factories, incandescent lamps, threshing machines, saws, agricultural hand tools, knitting factory, brewery, mince meat machine, knives, tannery, builders' factories. Value new buildings, \$409,000 in 1905, and \$615,000 in 1906. Value of manufactures, \$2,070,543 in 1901; \$3,042,343 in 1906. Electric power sold on meter basis, cost from \$15 to \$20 per h.p. Water power supplied by Welland Canal. Alt. 347. Pop. 12,000.

SPECIAL OPPORTUNITIES.—Basket factory for fruit growers. Natural gas supplied at 30c. per M. feet. Very low electricity rates. Tax exemptions and free water may be obtained. Small fruit and vegetable farms obtainable in vicinity. Write the Mayor, or Mgr. Imperial or Sterling Bks.

ST. MARY'S (Perth Co.) on G.T.R., C.P.R. Can. Ex., Dom. Ex. Tel. G.N.W., C.P.R. Hotels, Royal Edward, Ontario, Windsor, \$1.50. Industries include 2 builders' factories, 2 flour mills, flax mill, large agricultural implement factory, fruit evaporator, foundry, butter factory, small-ware factory, handle factory, boxes, 2 stone quarries, 2 lime kilns, 3 banks, good dairy district. Alt. 1,082. Pop. 4,000.

SPECIAL OPPORTUNITIES.—Industries requiring stone, dairying, milk condensing plant. Write Town Clerk, St. Mary's.

ST. THOMAS (Elgin Co.) on C.P.R., G.T.R., Mich. Central, Pere Marquette Rys. Can. Ex., Dom. Ex. Tel. G.N.W., C.P.R. Hotels, Grand Central \$2, Columbia \$1.50, Queen's \$1.50. An important railway town. Industries include 2 flour mills, iron foundry, agricultural implements, 3 builders' factories, bentwood, cigars and tobacco, soda water, foundry, handles, brooms and brushes, brass foundry, wagons, acetylene, buggy fronts. Value of new buildings, \$200,000 in 1906. Value of manufactures, \$2,248,846 in 1901; \$2,213,503 in 1906. Alt. 754. Pop. 15,000. Write Mgr. Imperial Bk., or Dominion Bk.

SANDWICH (Essex Co.) on Detroit River, opposite city of Detroit, Mich., on G.T.R., Can. Ex. Tel. G.N.W. Electric Ry. to station at Windsor, 2 miles. Industries, 1 lumber mill, 1 salt works, canning and wine factories. There are many peach orchards and vineyards in neighborhood (see under Ontario Wine, Canadian Encyclopedia). Pop. 1,850.

SARNIA (Lambton Co.) at mouth of St. Clair River, on Lake Huron, on G.T.R., Pere Marquette Ry. Steamers to

DESCRIPTIONS OF TOWNS

points on Lake Huron and Superior. Can. Ex., Dom. Ex. Tel. G.N.W., C.P.R. Hotels, Vendome \$2 to \$2.50, Belle Chambre \$1.50. Neighborhood supplies salt, timber and petroleum. Power, natural gas. Industries include lumber mills, gas and gasoline engine works, chairs, stoves, carriages, threshers, spokes and hubs, cereal foods, chop mill, oil refinery, planing mill, salt works, saw mill, tannery, woollen mill, brewery. Value of manufactured products, \$2,645,797 in 1901, and \$3,825,470 in 1906. The town has two miles of water front, at any point of which boats can make doek safely. Alt. 587. Pop. 9,750.

SPECIAL OPPORTUNITIES.—Iron or steel industries, shipbuilding, saw mills, elevators. Cheap freights to Northwest, and cheap coal. New industries offered bonus, free sites, exemption from taxes. Write Sec. Bd. of Trade, or Mgr. Bk. of Toronto.

SAULT STE. MARIE (District of Algoma) on the St. Mary's River, connecting Lakes Huron and Superior on C.P.R., terminal of Algoma Central and Hudson Bay Ry. Tel. G.N.W., C.P.R. Hotels, Cornwall, International and 12 others, \$1 to \$3. Principal industries, Algoma Steel Co., an annual capacity of finished products of 200,000 tons. Steel rails are made at the rate of 700 tons daily. Algoma Commercial Co. owns saw mill, daily output: Lumber 125,000, lath 40,000, shingles 25,000, pickets 20,000; about 16 million ft. of pine is cut annually from their timber limits on line of the A.C.R. Algoma Iron Works has a large machine shop and foundry. Algoma Steamship Line has a fleet of freight and passenger boats operating out of the Sault. International Transit Co. operates five miles of street car line. Lake Superior Power Co. furnishes electric power to the different industries. Lake Superior Iron and Steel Co. operates 3 open hearth furnaces. Sault Ste. Marie Pulp and Paper Co. manufactures, mechanically, dry wood pulp, output 120 tons daily; 40,000 cords of pulpwood consumed annually. The assets of Lake Superior Corporation, on June 30th, 1909, fifty-four million dollars; value of manufactures in 1909, seven million dollars. Under construction: 1 blast furnace with daily capacity 400 tons of pig iron, and 1 merchant and structural mill for the manufacture of structural shapes, bars, flat and round steel; daily capacity 500 tons. The town has electric light, good waterworks system, street railway. Pop. 9,000.

SPECIAL OPPORTUNITIES.—Furniture factory—good veneer mill already operating here. Tannery—abund-

ance of tan bark in near vicinity. All kinds of iron-working shops when the new structural steel mill is completed. Good opportunity for dairying, poultry raising, small fruits and market stuff. Write Sec. Bd. Trade, or Mgr. Imperial, Traders or Commerce Bks.

SCHOMBERG (York Co.) on Schomberg and Aurora Ry., connects with Metropolitan Ry. at Bond Lake. Tel. G.N.W. Hotel, St. George \$1 to \$1.50. Farming district. Pop. 300. Write Mgr. Traders Bk.

SEAFORTH (Hurou Co.) on G.T.R. Can. Ex., Dom. Ex. Tel. G.N.W., C.P.R. Hotel, Commercial. Surrounded by good agricultural country. Industries, saw mill, foundry, furniture, builders' factory, flax mill, flour mill, woollen mill, oatmeal mill. Value of manufactures, \$398,217 in 1901; \$347,388 in 1906. Alt. 1,008. Pop. 3,000. Write Mgr. Dominion Bk., Seaforth.

SIMCOE (Norfolk Co.) on G.T.R. and Wabash Ry. Tel. G.N.W., C.P.R. Am. Ex., Can. Ex. 3 banks. Hotels, Melbourne \$1.50, and 3 others. County seat, good farming district. Industries include woollen mill, oatmeal mill, stave and heading factory, 2 flour mills, bricks and tiles, creamery, 2 clothing factories, shoddy mill, 2 foundries and 2 machine shops, 3 planing mills, canning and can factory, natural gas, waterworks. Value of manufactures, \$371,660 in 1901; \$539,150 in 1906. Alt. 718. Pop. 3,500.

SMITH'S FALLS (Lanark Co.) on Rideau Canal and C.P.R. Tel. G.N.W., C.P.R. Dom. Ex. Hotels, Rideau \$2.00. Russell House \$1.50. Industries include large agricultural implement factory, plows, 2 stove foundries, 2 flour mills, planing mill, cheese, malleable castings, woollen mill, mineral fertilizers, builders' factory. Alt. 423. Pop. 6,100.

SPECIAL OPPORTUNITIES.—Any factory. Power from Rideau River. Write the Mayor.

SOUTHAMPTON (Bruce Co.) on east shore Lake Huron, G.T.R. Can. Ex. Tel. G.N.W. Hotels, Commercial \$1.50, Central \$1.00. Industries, builders' factory, 2 furniture factories, chairs, foundry, wood-turning, electric power. Value of manufactures, \$400,000 in 1909. Alt. 614. Pop. 2,250.

SPECIAL OPPORTUNITIES.—Woodworking industries, lawyer. Write the Mayor, Southampton.

SPRINGFIELD (Elgin Co.) on Mich. Central Ry. Tel. G.N.W. Am. Ex. Fine agricultural district. Alt. 793. Pop. 510.

DESCRIPTIONS OF TOWNS

SPECIAL OPPORTUNITIES.—Dentist, veterinary surgeon, undertaker, furniture store, general store, large lumber yard, building block of stores to rent. Write the Reeve.

STAYNER (Simcoe Co.) on G.T.R. Tel. G.N.W. Can. Ex. Hotel, The Globe \$1. Industries, flour mill and electric light, bricks, planing mill. Alt. 716. Pop. 1,200.

SPECIAL OPPORTUNITIES.—To new industries town offers free site, free water, low taxation. Write Mgr. Bk. of Toronto, Stayner.

STOUFFVILLE (York Co.) on G.T.R. Tel. G.N.W. Can. Ex. Hotels, Queen's \$1, Mansion House \$1. Industries, saw mill, telephone company, rattan furniture, carriages, electric light, machine shop. Alt. 892. Pop. 1,500.

STRATFORD (Perth Co.) G.T.R., 3 lines crossing. Can. Ex. Tel. G.N.W., C.P.R. Hotels, Windsor \$2, Albion \$1.50. New Queen's \$1.50. Divisional point G.T.R., good distributing point, excellent agricultural district. Industries, 40, include G.T.R. repair shops, fence factory, carriages, furniture, threshing machines, flour mill, biscuits and candy, hemp and flax cordage, bricks and tiles, chairs, knitting factory, woollens, ladders, hay forks, dairy supplies, brewery, stoves, corrugated steel pipe, drain pipe, racing sulkies, road carts, agricultural implements, pork packing, bridge and iron works, clothing, office specialties. Total value of buildings, \$5,395,420 in 1908. Total value of land, \$1,898,475 in 1908. Value of manufactures, \$1,936,176 in 1901; \$4,293,400 in 1908. Alt. 1,189. Pop. 14,860.

SPECIAL OPPORTUNITIES.—Furniture and agricultural implement factories. Free sites and low fixed assessment. Bonds of *bona fide* industries guaranteed by city. Niagara power. Skilled labor plentiful, especially for iron and woodworking industries. Write Sec. Bd. Trade.

STRATHROY (Middlesex Co.) on G.T.R., and C.P.R. 6 miles south. Can. Ex., Dom. Ex. Tel. G.N.W., C.P.R. Hotel, Queen's. Situated in first-class agricultural and dairying country. Neighborhood supplies bard and soft wood. Industries include 2 wood-turning, 2 builders' factories, 2 flour and grist mills, brewery, cannery, 2 cheese and butter factories, 2 furniture factories, pottery, woollen mill, stoves, aerated water, 1 upholstery factory. 1 cold storage, 3 chartered and 2 private banks.

Value of manufactured products over \$500,000. Alt. 744. Pop. 3,000.

SPECIAL OPPORTUNITIES.—Town offers inducements to factories on application. Write the Mayor.

STURGEON FALLS (Nipissing Dist.) on C.P.R. Tel. C.P.R. Dom. Ex. Hotel, Commercial \$1 to \$1.50. Industries, paper mills, bricks, 2 saw mills, smelter, planing mill, electric light and power company, glass sand near by. Alt. 685. Pop. 2,500.

SPECIAL OPPORTUNITIES.—Box factory, veneer mill, furniture factory, tannery, steam laundry. Write Pres. Bd. Trade, or Mgr. Traders Bk., Sturgeon Falls.

SUDBURY (Nipissing Dist.) on C.P.R. at junction of Soo branch C.N.O.R., 20 passenger trains daily. Dom. Ex. Tel. C.P.R. Hotel, Balmoral \$1. Centre of nickel district. Industries, planing mill, 2 brick yards, 1 sash and door factory, 1 cement block yard, 1 brewery, 1 soda water factory. Town has separate, public and high schools, 5 churches, 5 hotels, 1 theatorium, 1 opera house, 1 skating rink, court house, jail, registry offices, waterworks, electric light, electric power, Alt. 850. Pop. 2,500. (For particulars of nickel industry, see under Mining.)

SPECIAL OPPORTUNITIES.—Furniture, boots and shoes, shoe packs, box factory. Power, 5,000 h.p. developed, numerous undeveloped. Real estate and building will bring good returns. Tax exemptions can be secured. Write the Mayor, or Mgr. Traders Bk.

TAMWORTH (Addington Co.) on Salmon River and Bay of Quinte Ry., 20 miles north of Napanec on G.T.R., and 21 miles s.e. of Tweed on C.P.R. Ex. and Tel. offices. 3 churches and 1 bank, 2 cheese factories, cheese box factory, furniture and undertaking factory, 4 blacksmith shops. Alt. 515. Pop. 500.

SPECIAL OPPORTUNITIES.—Roller flour mill, splendid chance, good site $\frac{1}{2}$ mile from railway station. Write Clerk of the Court, or Mgr. Sterling Bk.

TAVISTOCK (Oxford Co.) on G.T.R. Can. Ex. Tel. G.N.W. Hotels, Commercial \$1, Arlington \$1, Oxford \$1. Industries, bricks, woollen factory, brooms, cider mill, elevator, box factory, planing mill, flax mill. Alt. 1,136. Pop. 1,300.

SPECIAL OPPORTUNITIES.—Creamery or any industry requiring pure spring water. Write Town Clerk, or Mgr. Traders Bk.

DESCRIPTIONS OF TOWNS

TEESWATER (Bruce Co.) on C.P.R. Dom. Ex. Tel. G.N.W., C.P.R. Hotel, Vendome \$1. Industries include tannery, butter factory, foundry and machine shop, grist mill, woollen mill, saw and flour mill. Alt. 1,019. Pop. 1,300.

THESSALON (Algoma Dist.) on C.P.R. Steamers to Owen Sound and Collingwood. Soo and Mackinac Island. Dom. Ex. Tel. C.P.R. Hotels, Queen's \$1 to \$1.50, Thessalon House \$1.00, Moore House \$1.50 to \$2. Industries, bricks, 5 saw mills, 2 planing mills, lumber mills, brick yard, woollen mill, smelter and boat factory, electric light and waterworks. Alt. 599. Pop. 1,300. Write Mayor, or Sec. Bd. Trade.

THOROLO (Welland Co.) incorporated as a town 1875, on G.T.R. and Welland Canal. Can. Ex., Dom. Ex. Tel. G.N.W., C.P.R. Hotels, City Hotel, Welland House and Summit House. Hourly electric car service to Niagara Falls, 9 miles, with connection for Buffalo and other points. 40 minute electric car service with St. Catharines, 4 miles; and Pt. Dalhousie, 7 miles. Industries include wood-turning factory, saw mill, paper mill, 2 flour mills, 2 pulp mills, cement works, asbestos pipe covering factory, foundry and machine shop, knitting factory, basket factory. Power supplied to manufacturers from De Cew Falls, 2½ miles, and Niagara; also by natural gas. In the neighborhood are stone quarries and natural cement. Value of manufactured products, \$317,946 in 1901; \$643,588 in 1906. Waterworks (costing \$90,000). Alt. 526. Pop. 2,500 (incl. suburbs).

SPECIAL OPPORTUNITIES.—Any industry wanting cheap power, water or fuel (natural gas), cheap transportation by rail or water, cheap land, low rentals, cheap living. Town offers fixed assessment or exemption, or both, to first-class industries. Write Town Clerk.

TILBURY (Kent Co.) on C.P.R., M.C.R. Dom. Ex., Can. Ex., Am. Ex. Tel. G.N.W. Hotel, International \$1. A good farming district, which supplies timber, crude oil, flax, tobacco, fruits and vegetables for canning. Power supplied by unlimited natural gas and electricity. Industries, handle factory, foundry, grist mill, planing mill, cannery, flax mills, iron works. Alt. 586. Pop. 1,700.

SPECIAL OPPORTUNITIES.—Glass factory, pork packing industry, brick and tile yard. Real estate. Natural gas rates 13c. per M. cubic ft., and 10% discount. Town offers free water, exemption from taxes for 10 years. Write the Reeve, or Mgr. Dominion Bk.

TILLSONBURG (Oxford Co.) on G.T.R., C.P.R., M.C.R., Wabash, Pere Marquette Ry. Tel. C.P.R., G.N.W. Can. Ex., Dom. Ex., Am. Ex. Hotel, Arlington \$1.50. The neighborhood supplies timber and brick clay. Industries include robes and mitts, machinery, grist mill, pork packing, brewery, bricks, 2 elevators, 2 foundries, hand harvest tools, flour mill, oatmeal mills. Value of manufactures, \$546,111 in 1901; \$1,006,896 in 1906. Alt. 757. Pop. 2,800. Write Mgr. Standard Bk., Tillsonburg.

SPECIAL OPPORTUNITIES.—Manufacturers can obtain cheap coal and good railway facilities.

TORONTO (York Co.) on Lake Ontario, incorporated as a city in 1834, on G.T.R., C.P.R. and C.N.O.R. Can. Ex., Dom. Ex., C.N.R. Ex. Tel. G.N.W., C.N.R., C.P.R. Capital of Province of Ontario. Seat of Ontario Government and Parliament Buildings, Toronto University, 3,780 students in 1908. Financial and commercial centre. Publishing centre of Canada. Hotels, King Edward \$3 up, Queen's \$3 up, Prince George \$2.50 to \$3, Arlington \$2 to \$3, Walker House \$2 to \$3, Palmer \$2 to \$2.50, Iroquois, Elliott House, Mossop's, rooms \$1.50. Industries, over 900 factories, including foundry products, wood products, leather, clothing, agricultural implements, distillery, breweries. Number of hands employed in factories, 65,000; capital invested in manufactures, \$75,000,000. Annual pay roll of manufacturers, \$29,000,000. Electric power from Niagara will be supplied to manufacturers. Area of city in 1909 about 25 sq. miles. Bank clearings, \$1,166,902,436 in 1908. Assessment for 1909, \$227,800,000. Rate of taxation, 18½ mills. Total debenture debt on 31st Dec., 1908, \$32,093,351. Building permits, 1908, \$11,795,435. Imports in 1908, \$52,258,103. Duty collected, \$9,183,939. In 1908 the St. Ry. carried 28,710,388, and killed 12 persons. Pop. over 325,000.

TOTTENHAM (Simcoe Co.) on G.T.R., C.P.R. Tel. G.N.W., C.P.R. Can. Ex., Dom. Ex. Hotel, Queen's \$1.00. Good farming district. Industries, planing mill, grist mill, 2 saw mills, electrical works, fare boxes, 3 elevators, Alt. 834. Pop. 800.

SPECIAL OPPORTUNITIES.—Pork packing, woollen and knitting mill. Write the Mayor, or Mgr. Traders Bk.

TRENTON (Hastings Co.) near west end of Bay of Quinte, at mouth of River Trent, on G.T.R., C.O.R. Steamers tri-weekly from Montreal daily to Picton, stage from Belle-

DESCRIPTIONS OF TOWNS

ville, 12 miles. Can. Ex., Dom. Ex. Tel. G.N.W., C.P.R. Hotel, Gilbert \$1.50. Industries include blown glass factory, boats, grist mill, clothing, 2 evaporators, sash factory, foundry and machine shop, baskets, door factory, heading and tile factory, cannery. Value of manufactures, \$662,675 in 1901; \$331,415 in 1906. Alt. 280. Pop. 5,000. Write Sec. Bd. Trade, Trenton.

TWEED (Hastings Co.) on Moira River, 55 miles east of Peterborough, on C.P.R. and Bay of Quinte Ry. Dom. Ex. Tel. C.P.R. Hotel, Huyck's \$1.50. 4 churches, 3 banks, schools, 2 flour mills, 2 saw mills, 1 grain elevator, 1 tannery, 1 pump factory, 2 foundries and machine shops, 1 carriage factory, 1 cheese factory, 2 lumber yards, 1 bub, heading and stave factory, 1 sash and blind factory, 1 dynamite works. Electric light, waterworks. Pop. 1,200.

UXBRIDGE (Ontario Co.) G.T.R. B.T. Co. Can. Ex. Tel. G.N.W. Hotels, Bascom House \$1, Arlington \$1, Mansion House \$1.50. Good farming district. Industries include rope, tannery, fanning mills, chopping mill, elevator, 2 foundries, saw mill, planing mill, pianos and organs. Town has public library, electric lighting, artesian wells and good schools. Pop. 1,700.

SPECIAL OPPORTUNITIES.—Boots and shoes, woollen mill, creamery, cheese factory. Tax exemptions and free sites offered. Write Town Clerk, or Mgr. Dominion or Sterling Bks.

VANKLEEK HILL (Prescott Co.) on C.P.R., G.T.R. Can. Ex., Dom. Ex. Tel. C.P.R., G.N.W. Hotel, Windsor \$1. Industries, confectionery, cheese factory, door factory, cheese boxes, bricks, flour mill, foundry, electric light company, sashes, doors, etc. Pop. 1,700.

VICTORIA HARBOR (Simcoe Co.) on G.T.R. Tel. G.N.W. Can. Ex. Hotel, Queen's \$1. Industries, saw mills, lumber mills. Pop. 1,500.

WALKERTON (Bruce Co.) on G.T.R., C.P.R. Can. Ex., Dom. Ex. Hotel, Queen's \$1.50. County seat, 2 banks. Industries, 2 furniture factories, concrete tile, 2 tanneries, woollen mill, bobbins, brewery, foundry and machine shop, 2 flour mills, knitting factory, builders' factory, biscuit factory, clothing factory and binder twine factory. Value of manufactures, \$356,719 in 1901; \$318,241 in 1906. Pop. 3,500. Write Sec. Bd. Trade, Walkerton.

WALKERVILLE (Essex Co.) on G.T.R., terminus of Pere Marquette Ry., electric railway to Windsor, 1½ miles. Ferry to Detroit. Hotel, Crown Inn \$1.50 to \$2. Indus-

tries include Hiram Walker's distillery, varnish, automobiles, baskets, school furniture, rattan, engines and valves, bridge works, wire fence works, furnaces, steam fire engines, fly paper, tobacco, clothing, cooperage, brewery, malleable iron, wagons, handles, asphalt blocks, carriage goods. Value of manufactures, \$2,017,179 in 1901; \$3,566,451 in 1906. Pop. 3,000. Write Sec. Bd. Trade.

WALLACEBURG (Kent Co.) on Perc Marquette Ry., boats to Sarnia and Detroit. Tel. G.N.W., C.P.R. Can. Ex., U.S. Ex., Dom. Ex. Hotel, Empire. Industries, canning, machine shop, glass works, evaporator, brass foundry, stock and barrels, beet sugar refinery, flour mill, 2 planing mills. Value of manufactures, \$482,779 in 1901; \$913,900 in 1906. Pop. 3,500.

SPECIAL OPPORTUNITIES.—Any line requiring cheap female labor. Good rail and water shipping facilities. Natural gas supplied 10c. to 15c. per M. cubic feet. Free sites offered to good concerns. Write the Mayor, or Mgr. Bk. of Toronto.

WATERLOO (Waterloo Co.) on G.T.R. Can. Ex., Dom. Ex. Tel. G.N.W., C.P.R. Hotel, Lewis House \$2. Industries include threshing machines, furniture, brooms and brushes, boots and shoes, malt house, upholstery, office desks, distillery, buttons, collars and cuffs, flour mill, bricks, brick and tiles, cigars, washing machines, combs, gloves, boxes, interior woodwork. Value of manufactures, \$1,052,177 in 1901; \$1,668,647 in 1906. Pop. 4,500.

SPECIAL OPPORTUNITIES.—A good supply of skilled labor is available for the manufacture of furniture (frames and upholstered goods, office, school and church), general interior fittings, boots and shoes, collars and shirts, and for general foundry. No strikes. Old woollen mill for sale or rent on Main St. Tax exemption offered; sometimes free sites and loans. Write the Mayor, or Mgr. Bk. of Toronto.

WATFORD (Lambton) on G.T.R. Tel. G.N.W., C.P.R. Can. Ex. Hotels, Roche House, Rogers' and Taylor, \$1. A good farming district, supplying plenty of timber. Flour mill, cement pipes, wagons, automobiles, wire, 2 lumber yards, 2 planing mills, 2 saw mills, and stave mill. Pop. 1,300. Write the Reeve, or Mgr. Sterling Bk., Watford.

WELLANO (Welland Co.) on Welland Canal, on M.C.R., G.T.R., T.H. & B., Wabash Ry. Tel. G.N.W., C.P.R. Dom. Ex., Can. Ex., Am. Ex. Hotels, Dexter, Arlington \$1.50. Power, electric, natural gas. Cost of electricity about \$14 to \$18 per h.p. per annum. Natural gas for

DESCRIPTIONS OF TOWNS

manufacturing in large quantities, 8 to 10c. per annum. Industries include dredge works, bedstead and spring mattress factory, flour mill, builders' factory, farming machine shop, planing mill, electric construction company, chopping mill, stove factory, binder twine, steel works. Value of manufactured products, \$152,087 in 1905; \$535,265 in 1908. Pop. 3,000. (For particulars of Welland Canal, see under Canals and Waterways. Heaton's Annual, 1910.)

SPECIAL OPPORTUNITIES.—All kinds of factories. Natural gas supplied at 10c. per M. foot. Electricity \$15 per h.p. per annum. 24-hour service. Factory sites on G.T.R., Wabash, C.P.R., T.H. & B., M.C.R. A fine harbor, 20 ft. of water. Town offers fixed taxation, water at cost. Free sites given by private parties. Write the Mayor, or Mgr. Bk. of Toronto.

WHITBY (Ontario Co.) situate on Lake Ontario, with harbor, on G.T.R., C.P.R. stage to Myrtle. Dom. Ex., Can. Ex. Tel. G.N.W., C.P.R. Hotel, New Armstrong \$1.50. Seat of Ontario Ladies' College. Good farming district, supplying brick clay, sand, gravel, sugar beets. Electric power can be obtained from municipal plant. Industries include 2 elevators, harvesting machines, machine shop, tannery, saddlery, hardware, planing mill. Pop. 2,300.

SPECIAL OPPORTUNITIES.—Canning, sugar beet factory, evaporating, cement factory, summer hotel at Lakefront Park. Town offers inducements on application. Write the Mayor, or Mgr. Dominion Bk.

WIARTON (Bruce Co.) on Georgian Bay, on G.T.R. Can. Ex. Tel. G.N.W. Hotel, Pacific \$1. Industries include Portland cement, woollen mill, builders' factory, chairs, saw mill, lumber mill, flour mill, furniture, machine shop, hardwood specialty, carriages, creamery, Dominion Fish Co. Value of manufactures, \$309,704 in 1906. Pop. 2,800. Write the Mayor, Wiaraton.

WINDSOR (Essex Co.) on St. Clair River, immediately opposite Detroit, C.P.R., M.C.R., G.T.R., Wabash, Pere Marquette. Tel. G.N.W. Can. Ex., Dom. Ex., Am. Ex. Hotels, International House \$1 to \$2, Manning House, Crawford House, British American. Limestone found in neighborhood. Industries include large salt works, wire fence, tobacco, cigars, brass goods, brewery, knitting factory, cabinet shop, asphalt blocks, flour mill, machine shop, duplicating machines, builders' factory, paint and varnish, machine works, corn meal, brushes, paper boxes, bentwood, cement bricks, foundry, overall factory, manufacturing chemists, pearl button works, automobile fac-

tory. Natural gas available for manufacturing purposes. Value of manufactures, \$1,260,947 in 1901; \$1,715,160 in 1906. Value new buildings, 1906, \$320,000. Pop. 16,000.

SPECIAL OPPORTUNITIES.—Iron and steel industries, building houses and stores. Town offers free site, water and light, with exemption from taxes for ten years. Write Sec. Bd. Trade, or Mgr. Dominion Bk.

WINGHAM (Huron Co.) on G.T.R., C.P.R. Can. Ex., Dom. Ex. Tel. G.N.W., C.P.R. Hotels, Queen's \$1.50, Brunswick \$1.50. Good farming district, which supplies hard and soft timber, gravel, brick clay. Municipality owns two water powers for electric light and waterworks. Industries include business college, planing mill, salt works, flour mill, panel doors, saw mill, furniture, stoves, tannery, bricks, aerated water, glove leather. Value of manufactures, \$407,791 in 1901; \$439,561 in 1906. Pop. 2,500.

SPECIAL OPPORTUNITIES.—Furniture, carriage and agricultural implement factories. Town offers exemption from taxes. Write Pres. Bd. Trade, or Mgr. Dominion Bk.

WOODSTOCK (Oxford Co.) on G.T.R., C.P.R.; electric railway to Ingersoll. Can. Ex., Dom. Ex. Hotels, Buckingham \$1.50, New Dufferin \$1.50, Oxford \$2 to \$2.50. Good agricultural district supplying sand, gravel, brick clay, wool, hides, grain. Seat of Woodstock College, 150 students. Industries include wagons, 3 machine shops, piano strings, biscuits, furniture, woven wire fence, wheel hubs, furniture castors, farm tools, lumber mill, flour mill, organs and pianos, planing mill, brewery, chopping mill, soaps, stoves, oatmeal, windmills, bentwood for brooms. Value of manufactures, \$485,097 in 1901; \$571,997 in 1906. Pop. 9,500.

SPECIAL OPPORTUNITIES.—Iron and metal industries. Liberal inducements on application. Write Pres. Bd. Trade, or Mgr. Imperial or Traders Bks.

Opportunities in Northern Ontario

In 1905 there were 2,000 people in North Ontario. Today the population is between 50,000 and 60,000. These are the pioneers of an army of immigration who are taking possession of a new country, distant only 350 miles from Toronto, rich in minerals and forest wealth, with an almost unbroken stretch of rich agricultural land, larger in extent than the States of Massachusetts, Connecticut, Rhode Island and Delaware combined. Profitable and ever extending markets have been opened up by railway construction. Below are a few facts of this wonderful region.

AGRICULTURAL LANDS, AGENCIES—

- 1—**THE NEW LISKEARD AGENCY** contains 19 townships, situated north and west of Lake Temiscaming. The agent resides at New Liskeard. It is reached at present by the Temiskaming and Northern Ontario Railway from North Bay. See also pages under Temiscaming District.
- 2—**ENGLEHART AGENCY** contains 20 townships, situated north of the New Liskeard Agency. The agent resides at Englehart, on the T. & N. O. Ry., 25 miles north of New Liskeard.
- 3—**MATHESON AGENCY** contains 3 townships, about 87 miles from New Liskeard. The agent resides at Matheson on the T. & N. O. Ry.
- 4—**NORTH BAY AGENCY** contains one sale township, Widdifield, and three free grant townships. The agent resides at North Bay.
- 5—**COCHRANE AGENCY** contains four townships. The agent resides at Cochrane.

ADVANTAGES OF SETTLERS. See page 11.

AGRICULTURAL LANDS.—CONDITIONS OF SALE. See Crown Lands for sale, page 11.

AGRICULTURAL LANDS.—THE SOIL. Generally speaking the soil is almost exclusively of alluvial clay, light brown, yellow or black, while beds of gravel are rare and never deep. The difference in colour seems to make no difference to the agricultural value. The tamarac land is

OPPORTUNITIES IN NORTHERN ONTARIO 71

covered with 12 to 18 inches of moss in which the trees stand. This is burnt off and the stumps pulled out by a horse. Poplar land is generally put into hay and left so till the stumps are decayed.

CLIMATIC CONDITIONS. Hot summers, and cold, dry winters are the rule. The dryness of the atmosphere prevents the cold of the winter from being unpleasantly felt and the snow is light and dry. At times it gets very hot in summer. Pleasant falls are the rule.

FODDER CROPS. Clover and timothy hay pay especially well. The yield is commonly three tons to the acre.

GRAIN CROPS. Wheat, oats and barley need a crop of peas to precede them to do best, especially where the land has been heavily burned over. Wheat has not as yet been extensively grown. The varieties known as "Wild Goose," "Red Fyfe" and "Dawson Golden Chaff," are well adapted to this district.

MARKETS. Extensive lumbering operations, the wonderful mining development and new towns springing up, provide an immediate outlet for all farm and garden produce at good prices.

MINERALS. Only the fringe of the mineral wealth of North Ontario has been touched, yet the mining camps of this region, founded in the last few years, are famous all over the world. See under "Mining," pages 15-22.

SOCIAL CONDITIONS. Good highways are being rapidly constructed, giving access to towns and means of social intercourse. Churches and schools have gone rapidly up all over the country. Great attention is paid to education.

SPORTSMAN'S PARADISE. Moose, deer and bear are abundant. The rivers and lakes are full of trout and bass.

SUMMER TOURISTS. North Ontario is the Mecca of thousands of summer tourists, who revisit this district year after year, providing a source of income to the farmers and storekeepers in the district. The Temagami Steamboat and Hotel Company operates a series of first-class hotels in connection with their line of boats. Lakes and rivers intersect the whole country.

TIMBER. The principal trees are white and black spruce, balsam, poplar, balm of Gilead, tamarac, white birch and white and red pine. The undergrowth consists of swamp alder, moose maple, mountain ash, ground hemlock, raspberries, blueberries and cranberries.

72 OPPORTUNITIES IN NORTHERN ONTARIO

TOWNS. New towns are springing up all through this district, offering markets to the farmers and opportunities for those who prefer other lines of occupation. See descriptions of Halleybury, page 41; New Liskeard, p. 48; Cobalt, p. 33; Gowganda, p. 40; Elk City, p. 35; Keewatin, p. 44; North Bay, p. 49; Fort William, p. 37; Port Arthur, p. 55; Sault Ste. Marie, p. 60; Sudbury, p. 63. See also "Townsites," page 23.

VEGETABLES. Peas, onions, carrots, parsnips, lettuce, turn'ps, cabbage and blood and sugar beets do well.

List of Annual Reports

*Issued by the Ontario Department of Agriculture, Toronto,
Ontario, Canada*

- Ontario Agricultural College.
- Ontario Experimental Union.
- Farmers' Institutes of Ontario.
- Women's Institutes of Ontario.
- Dairymen's Associations of Ontario.
- Live Stock Associations of Ontario.
- Ontario Fruit Growers' Association.
- Report of the Fruit Branch.
- Entomological Society of Ontario.
- Farm Forestry Report.
- Ontario Corn Growers' Association.
- Ontario Bee-Keepers' Association.
- Ontario Vegetable Growers' Association.
- Agricultural Societies of Ontario.
- Horticultural Societies of Ontario.
- Poultry Institute of Ontario.
- Ontario Bureau of Industries (Agricultural Statistics).
- Ontario Bureau of Industries (Municipal Statistics).
- Ontario Veterinary College.

**Successful and Effective
Advertising**

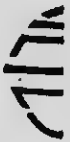
**THE
PERSONAL
TYPEWRITTEN
FORM
LETTER**

**We specialize in this, the most
successful form of personal
advertising.**

HEYES SYSTEMS

**32 CHURCH STREET
TORONTO**

TELEPHONE MAIN 5076



Multi-Copy Work

Superior Typewritten Soliciting Letters.
Contracts taken for the Address-
ing and Mailing of Catalogues,
Price Lists, and Circulars.

GENERAL PRINTERS

WE MAKE A SPECIALTY OF ENVELOPE
PRINTING

32 CHURCH STREET TORONTO

TELEPHONE MAIN 5076



