

Technical and Bibliographic Notes / Notes techniques et bibliographiques

The Institute has attempted to obtain the best original copy available for filming. Features of this copy which may be bibliographically unique, which may alter any of the images in the reproduction, or which may significantly change the usual method of filming, are checked below.

L'Institut a microfilmé le meilleur exemplaire qu'il lui a été possible de se procurer. Les détails de cet exemplaire qui sont peut-être uniques du point de vue bibliographique, qui peuvent modifier une image reproduite, ou qui peuvent exiger une modification dans la méthode normale de filmage sont indiqués ci-dessous.

- Coloured covers/
Couverture de couleur
- Covers damaged/
Couverture endommagée
- Covers restored and/or laminated/
Couverture restaurée et/ou pelliculée
- Cover title missing/
Le titre de couverture manque
- Coloured maps/
Cartes géographiques en couleur
- Coloured ink (i.e. other than blue or black)/
Encre de couleur (i.e. autre que bleue ou noire)
- Coloured plates and/or illustrations/
Planches et/ou illustrations en couleur
- Bound with other material/
Relié avec d'autres documents
- Tight binding may cause shadows or distortion along interior margin/
La reliure serrée peut causer de l'ombre ou de la distorsion le long de la marge intérieure
- Blank leaves added during restoration may appear within the text. Whenever possible, these have been omitted from filming/
Il se peut que certaines pages blanches ajoutées lors d'une restauration apparaissent dans le texte, mais, lorsque cela était possible, ces pages n'ont pas été filmées.
- Additional comments:
Commentaires supplémentaires:

- Coloured pages/
Pages de couleur
- Pages damaged/
Pages endommagées
- Pages restored and/or laminated/
Pages restaurées et/ou pelliculées
- Pages discoloured, stained or foxed/
Pages décolorées, tachetées ou piquées
- Pages detached/
Pages détachées
- Showthrough/
Transparence
- Quality of print varies/
Qualité inégale de l'impression
- Continuous pagination/
Pagination continue
- Includes index(es)/
Comprend un (des) index
- Title on header taken from: /
Le titre de l'en-tête provient:
- Title page of issue/
Page de titre de la livraison
- Caption of issue/
Titre de départ de la livraison
- Masthead/
Générique (périodiques) de la livraison

This item is filmed at the reduction ratio checked below/
Ce document est filmé au taux de réduction indiqué ci-dessous.

10X	14X	18X	22X	26X	30X
<input type="checkbox"/>	<input type="checkbox"/>	<input type="checkbox"/>	<input type="checkbox"/>	<input checked="" type="checkbox"/>	<input type="checkbox"/>
12X	16X	20X	24X	28X	32X

BANK OF MONTREAL

ESTABLISHED 1777.

Capital all Paid-up - \$12,000,000
Reserve Fund, - 6,000,000
Undivided Profits - 1,160,954.19

HEAD OFFICE, MONTREAL.

BOARD OF DIRECTORS.

Hon. Lord Strathcona and Mount Royal, G.C.M.G., President.
Hon. G. A. Drummond, Vice-President.
A. T. Paterson, Esq., James Ross, Esq.
Sir William McDonald, H. B. Angus, Esq.
Edw. B. Greenfield, Esq., A. P. Gault, Esq.
R. G. Heil, Esq.

E. S. CLOUSTON, General Manager.

BRANCHES in all the principal cities and towns throughout the Dominion of Canada, and in the following cities: St. John's, Newfoundland London, Eng., 27 Abchurch Lane, E.C. New York, 59 Wall St. Chicago, 153 La Salle Street.

BANKERS AND CORRESPONDENTS.

Liverpool—Bank of Liverpool
Scotland—British Lichen Co. Bank and Branches.

WINNIPEG BRANCH

Travellers' Circular Letters of Credit and (Transit) Credits issued for use in all parts of the world.
Collections made on favorable terms.
Interest allowed on deposits at current rates.
Drafts sold available at all points in Europe, United States and Canada, including Atlanta and Dawson City.

A. F. D. MACGACHEN, Manager

DOMINION BANK

Capital (Paid up), \$1,500,000
Reserve Fund - \$1,500,000

Hon. Sir Frank Smith, Pres., E. B. Osler, Vice-Pres.

HEAD OFFICE, TORONTO

T. G. BROUGH, - GENERAL MANAGER

WINNIPEG OFFICES:

Main Office: 150 Princess St.
F. L. PATTON, Manager.

North End Branch: 709 Main St.
S. I. JONES, Manager.

INTEREST ALLOWED ON DEPOSITS IN SAVINGS BANK DEPARTMENT.

UNION BANK OF CANADA

CAPITAL PAID-UP - 2,000,000
REST - 450,000

HEAD OFFICE, QUEBEC.

BOARD OF DIRECTORS

Andrew Thomson, Esq., Pres. James King, M.P.P., Vice-Pres.
D. C. Thomson, Esq., E. J. Hile, Esq.
E. Groux, Esq., Hon. John Sharples
Win. Price, Esq.
E. E. Webb, General Manager, J. G. Bissett, Inspector
F. W. S. Crisp, Assistant Inspector

BRANCHES IN MANITOBA AND NORTH WEST TERRITORIES

WINNIPEG—THOS. McCAFFRY, Manager.

GEORGE BOWLES, Assistant Manager.

Boisvert, Man. Deloraine, Man. Mooseomin, N.W.T.
Melville, Man. Holmwood, Man. Moose Jaw, N.W.T.
Carberry, Man. Lethbridge, N.W.T. Neepawa, Man.
Carman, Man. Morden, Man. Virren, Man.
Minnedosa, Man. Souris, Man. Glenboro, Man.
Hamiota, Man. Montfort, Man. Wawanesa, Man.
Indian Head, Assa. McLeod, Alberta. Greta, Man.
Hartney, Man. Calgary, N.W.T. Killarney, Man.
Crystal City, Man. Regina, N.W.T. Fincher Creek

BRANCHES IN ONTARIO AND QUEBEC

Alexandria, Ont. Norwood, Ont. Smith Falls, Ont.
Hastings, Ont. Ottawa, Ont. Toronto, Ont.
Merrickville, Ont. Quebec, Que. Warrenton, Ont.
Montreal, Que. Shelburne, Ont. Winchester, Ont.
Caledon, Ont. Fife

A General Banking Business Transacted.

Safe Deposit Boxes to Rent.

Imperial Bank of Canada

HEAD OFFICE, TORONTO.

Capital Authorized - \$2,500,000
Capital Paid Up - \$2,391,863
Rest - \$1,554,710

D. B. Wilkie, General Manager. E. Hay, Inspector.

DIRECTORS:

H. S. Howland, President. T. R. Merritt, Vice-President
Wm Ramsay Robt. Jeffrey.
T. Sutherland-Stayner, Elias Rogers. Wm. Hendrie.

BRANCHES IN THE NORTHWEST AND NORTH COASTS.

Winnipeg, Man. C. S. Hoare, Manager.
Brandon, Man. G. Leslie,
Portage la Prairie, Man. W. Bell,
Calgary, Alta. M. Morris,
Prince Albert, Sask. Davidson
Edmonton, Alta. G. R. Kirkpatrick, Manager
Strathcona, Alta. A. Wilson, Manager.
Yalouover, H.C. J. Stuker, Manager.
Regina, H.C. H. B. Hearn, Manager
Nelson, B.C. J. M. Lay, Manager
Golden, B.C. J. S. Gibb.

BRANCHES ONTARIO AND QUEBEC.

Essex, Ont. Port Colborne, Ont.
Galt, Ont. Hat Portage, Ont.
Fergus, Ont. St. Catharines, Ont.
Hamilton, Ont. Sault Ste. Marie, Ont.
Ingersoll, Ont. St. Thomas, Ont.
Listowel, Ont. St. Thomas East End.
Niagara Falls, Ont. Woodstock, Ont.
Welland, Ont.
Toronto - Wellington and Leader Lane
" - Yonge and Queen
" - Yonge and Bloor
" - King and York
Montreal, Que.

WINNIPEG BRANCH

SAVINGS BANK DEPARTMENT—Deposits of \$1 and upwards received and interest allowed.

DEBENTURES—Municipal and other Debentures purchased.

AGENTS IN GREAT BRITAIN—Lloyds' Bank Ltd, 72 Lombard St., London, with whom money may be deposited for transfer by letter or cable to any of the above branches.

DEPOSIT RECEIPTS issued negotiable without charge at any of the Hudson's Bay Co's Posts in Athabasca, Peace River and Mackenzie Districts.

DRAFTS SOLD, available at all points in Canada, United States and Europe.

LETTERS OF CREDIT issued, available in any part of the world

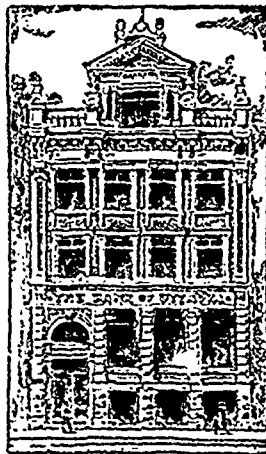
MONEY ORDERS issued payable at any Bank in Canada Rates—Under \$10, \$c; \$10 to \$20, 10c; \$20 to \$50, 12c; \$50 to \$50, 14c.

C. S. HOARE, Manager.

BANK OF OTTAWA.

Head Office, Ottawa.

Capital paid up, \$1,731,080
Rest, \$1,403,310



Capital authorized, \$2,000,000
Capital subscribed, \$1,994,900

This Bank offers to clients every facility which their Balance, Business and responsibility warrant.

WINNIPEG BRANCH, - J. R. MONK, Manager

The Canadian Bank of Commerce

CAPITAL \$6,000,000
PAID-UP
HEAD OFFICE, TORONTO
Winnipeg Branch
transacts a general banking business
John Aird, Manager

BANK OF BRITISH NORTH AMERICA

ESTABLISHED 1836.

INCORPORATED BY ROYAL CHARTER IN 1840.

Paid-up Capital - £1,000,000 Stg.
Reserve Fund - £325,000 "

HEAD OFFICE—3 Clements Lane, Lombard St., London.
COUNTY MANAGERS—J. H. Brodie, John James Calder, Henry R. Farrer, Gaspard Farrer, Richard H. Glyn, E. A. Hoare, H. J. B. Kendall, Frederic Lubbock, John Paton, Geo. D. Whistman
A. O. Wallis, Secretary.

Head Office in Canada—St. James St., Montreal.
H. Sukeman, General Manager.
J. Elmsly, Inspector.

BRANCHES IN CANADA.

PROVINCE OF ONTARIO: London, Brantford, Hamilton, Toronto, Midland, Kingston, Ottawa.
PROVINCE OF QUEBEC: Montreal, Quebec.
PROVINCE OF NEW BRUNSWICK: St. John, Fredericton.
PROVINCE OF MANITOBA: Winnipeg, Brandon.
BRITISH COLUMBIA: Ashcroft, Alton, Bennett, Victoria, Vancouver, Rossland, Greenwood.
YUKON DISTRICT: Dawson City, Trail (ub., 1922).

AGENTS IN THE UNITED STATES.

New York—52 Wall Street, W. Lawson and J. C. Welsh, Agts
San Francisco—120 Sansome St., H. M. J. McMichael and J. H. Ambrose, Agents.

Drafts on South Africa may be obtained at the Bank's Branches.

THE WESTERN CO-OPERATIVE LOAN AND INVESTMENT CO.

INCORPORATED 1897

HEAD OFFICE, WINNIPEG, MAN.

Hon. D. H. McMillan, President.
Hy. Brynes, Vice-Pres. S. H. Willis, Manager
G. W. Donald, Sec.-Treas.

ISSUES Paid Stock paying 6 per cent per annum. Fully paid stock paying 7 per cent per annum. Instalment Stock maturing in 5, 10 or 12 years.

LOANS made re-payable in monthly, quarterly half yearly or yearly instalments

Place "For Sale" or "want" advts. in The Commercial. It reaches nearly all business people between Lake Superior and the Pacific Coast.

BANK OF NOVA SCOTIA.

INCORPORATED 1832.

JOHN Y. PAYZANT, PRESIDENT.

H. C. McLEOD, GENERAL MANAGER.

CAPITAL PAID UP, - \$1,768,000.00.

RESERVE, - \$2,201,656.57.

COMPARATIVE STATEMENT, 1890---1900.

ASSETS.	Jan. 1st, 1890		Jan. 1st, 1900.		LIABILITIES.	Jan. 1st, 1890		Jan. 1st, 1900	
	\$		\$			\$		\$	
Quick Assets	2,432,135.38		8,274,162.14		Capital paid in ...	1,114,300.00		1,760,900.00	
Loans and bills discounted.	5,903,094.20		11,270,924.09		Reserve undivided profits..	572,973.81		2,193,136.57	
Other assets	44,956.41		74,669.61		Notes in circulation	1,325,270.68		1,670,368.50	
Bank premises	94,975.77		18,640.59		Other liabilities..	194,238.36		198,632.96	
					Deposits	5,268,378.91		13,815,358.40	
	\$ 8,475,161.76		\$ 19,638,396.43			\$ 8,475,161.76		\$ 19,638,396.43	

* Nominal value.

Winnipeg Branch: C. A. KENNEDY, Manager

BANK OF HAMILTON

Head Office, Hamilton.

Capital (all paid-up) ..\$1,500,000
Reserve Fund 1,000,000

Board of Directors

John Stuart, President. A. G. Ramsay, Vice-President.
John Proctor George Roach A. T. Wood, M.P.
A. B. Lee (Toronto) Wm. Gibson, M.P.
J. Turnbull, Cashier. H. S. Steven, Asst. Cashier.

Agencies throughout Ontario and at the following points in Manitoba and the West: Brandon, Carman, Hamiota, Manitou, Morden, Plum Coulee, Winkler, Winnipeg and Vancouver, B.C.
Deposits received and interest allowed.
General Banking Business transacted.
Collections carefully and promptly effected at all points in Canada.
Savings Banks at all Offices.
Correspondence solicited.
WINNIPEG BRANCH, Opposite Post Office.
C. BARTLETT, Agent.

The Western Loan & Trust Co.

LIMITED

Incorporated by Special Act of the Legislature.

Office Company's Building, No. 9 St. Sacrament St., Montreal, Que.

DIRECTORS :

Hon. A. W. Ogilvie W. H. Constock, Esq.
W. Barclay Stephens, Esq. H. Prefontaine, Esq., M.P.
R. W. Knight, Esq. John Hoodless, Esq.
J. N. Greenshields, Esq., Q.C. W. L. Hogg, Esq.

OFFICERS

Hon. A. W. Ogilvie, Pres. H. Prefontaine, Esq., M.P., Vice-Pres
J. W. Michaud, Esq., Asst. Mgr. W. Barclay Stephens, Esq., Mgr
Solicitors—Messrs. Greenshields & Greenshields.
Bankers—The Imperial Bank of Canada.

This Company acts as assignee, administrator, executor, trustee, receiver, committee of lunatic, guardian liquidator, etc etc., also as agent of the above offices.
Debentures issued for three or five years, both debentures and interest on the same can be collected in any part of Canada without charge.

For further particulars address the manager

CROTTY & CROSS, AGENTS, WINNIPEG

JOHN W. PECK & CO.
MONTREAL WINNIPEG VANCOUVER

Manufacturers of

**CLOTHING
FURS
SHIRTS**

— Dealers in —
**MEN'S FURNISHINGS
HATS, CAPS.**

AT THE FRONT

We are leading with our new samples of

FINE CLOTHING For Fall and Winter of 1900

It will pay you to wait and see our travellers and samples before buying.

DONALD FRASER & CO.

Manufacturers of Fine Clothing
WHOLESALE

502 St. Paul St., Montreal.

126 Princess St., Winnipeg.

"KNOWLEDGE IS POWER."

The Stuart-Arbutnot Machinery Co. Ltd.

(SUCCESSORS TO STUART & HARPER)

Are now located in their new offices and warerooms

764-766 Main St.

Winnipeg

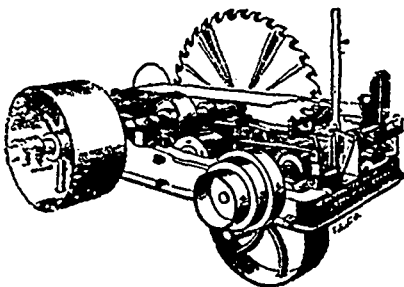
ONE DOOR NORTH OF THE OLD STAND - -

Call, ring up, or write them, for prices and information required on Engines, Boilers, Pumps, Flour and Saw Mill Machinery, Motors and Electrical Supplies of all kinds.

Phone 324

Established 1879

P. O. Box 693



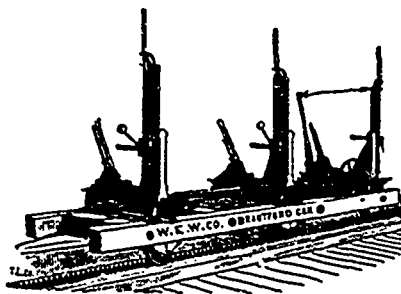
ENGINES AND BOILERS

Waterous Engine Works Co

WINNIPEG, MAN. AND VANCOUVER, B.C.

SAW MILL MACHINERY

Shingle Mills and Planers
Edgers and Trimmers



Spring Goods

We have a complete line of

Express Wagons, Tops, Marbles

We shall soon be able to ship Ink, of which we carry the following lines:

Stephens' Paul's Underwood's
and Devan's

Your Orders Solicited.

Clark Bros. & Co.
173 McDermott Ave.

P. O. Box 1240.

WINNIPEG, MAN

FORMALIN

For Smut in Grain.

STRYCHNINE

For Gophers.

LIME JUICE

We have Formalin in 5 gal. demijohns; pint half-pint and quarter pint bottles.
Strychnine, pure, in bulk, 25 c. z. tins and bottles to order.

Lime Juice in barrels, quarts and pints.

WRITE FOR QUOTATIONS.

The Martin, Bole & Wynne Co.

MANUFACTURING CHEMISTS

P.O. Drawer 1461.

WINNIPEG

R. A. LISTER & CO. Ltd.

232 King St., Winnipeg

Offer to the trade at right discount their

'Alexandra' and 'Melotte' Cream Separators

which are unequalled for large or small dairies, also

- Barrel Churns
- Butter Prints
- Butter Workers
- Thermometers
- Butter Boxes
- Parchment Paper
- Cheese Box Material
- Cheese Rennet
- Colouring
- Bundage
- Dairy Brushes
- Egg Cases

Correspondence solicited in English, French, German, Icelandic and Scandinavian.

THE COMMERCIAL

The recognized authority on all matters pertaining to trade and progress in Western Canada, including that portion of Ontario west of Lake Superior, the Provinces of Manitoba and British Columbia and the Territories.

Eighteenth Year of Publication
ISSUED EVERY SATURDAY

SUBSCRIPTIONS, CANADA AND UNITED STATES
\$2.00 PER ANNUM IN ADVANCE OR \$2.25 WHEN
NOT SO PAID; OTHER COUNTRIES, \$2.50 PER
ANNUM IN ADVANCE.

Changes for advertisements or stops should be in
not later than Thursday Morning.

Advertisements purporting to be news matter,
or which profess to express the opinions of this
journal, will not be inserted.

Office: 151 St. Dermot Street.

D. W. BUCHANAN,
Publisher.

The Commercial certainly enjoys a very much larger circulation among the business community of the vast region lying between Lake Superior and the Pacific Coast than any other paper in Canada, daily or weekly. The Commercial also reaches the leading wholesale, commission, manufacturing and financial houses of Eastern Canada.

WINNIPEG, APRIL 7, 1900.

Brandon's Debt.

It is a matter for congratulation that the council and citizens of Brandon have declared their ability to cope with their financial difficulties. When some eighteen months ago or thereabouts the city of Brandon declared its inability to meet its liabilities in full a very painful impression was created throughout Manitoba. It was felt that the whole province must suffer with Brandon in this catastrophe. Occupying the proud position of second city in the great province of Manitoba, it was a matter for general regret that this financial crisis had occurred.

Brandon was beset with financial difficulties growing out of circumstances in connection with the early history of the place, and there was certainly reason for sympathy with the citizens in their trouble. At the same time the Commercial always had faith in the ability of the city to surmount those difficulties. With its splendid position as the centre of a vast and rich region, and its many other natural advantages, the Commercial always believed that the future of Brandon was assured. We believe the people of Brandon are now taking the right course. If the affairs of the city are managed on a strictly business basis, we believe the result will be so satisfactory as to even surprise the Brandon people themselves. All Manitobans will rejoice in the improved prospects now before the chief city of western Manitoba, and will hope that this improvement will be permanent and continuous.

Freight Rates and Traffic Matters.

The Montreal Trade Bulletin of Friday last says: "Engagements for grain have been made during the week at 2s 3d to 2s 6d for Manchester, the steamers for this port having pretty well all their space engaged for May. We also hear of 5,000 quarters booked for Liverpool at 2s 3d, with 2s 6d now asked. Bristol space has been taken at 2s 6d, and we quote 2s 6d to 2s 9d. Glasgow freight is firm at 2s 6d, and London space has

been taken at 2s 6d and 2s 9d, with 3s now asked. The Belfast rate on heavy grain is 2s 6d, and the Dublin rate 2s 9d. A New York report says: "Prompt steamers to Cork for orders are quoted 4s to 4s 1.1-2d, April 4s and May 3s 9d and 3s 10.1-2d, the latter rate for first half loading. Berth term rates to picked ports are firm at 3s 4.1-2d, 3s 3d and 3s 1.1-2d for prompt April and May respectively."

Further engagements are reported for wheat from Duluth and Fort William at 6s 3-4c to 7c per bushel through to Montreal. From Chicago to Montreal the rate quoted is 61.2c per bushel.

Edmonton Board of Trade.

The annual meeting of the Edmonton board of trade was held last Saturday morning. The retiring president's address gave a resume of the board's work for the year and predicted a bright future for the Edmonton district. Among other things Mr. Lines referred to the steady progress being made in the settlement of the district, the opening up of a good trade connection with the Kootenay districts of British Columbia, the development of gold production from the bars of the Saskatchewan river in the neighborhood of Edmonton, the improved railway and mail service and a number of other evidences of progress in the town and district. Speaking of the crops of last year he said: "The crops on the whole last season were good. The quality of wheat was seriously impaired by being cut too green and certain districts suffered from hail, but I think that we can congratulate ourselves upon having harvested a fair average crop; the increased acreage has considerably swelled the total yield. According to the government crop report, in 1899, Northern Alberta harvested 100,000 bushels more wheat and 350,000 cu h. more oats than in 1898; the returns for 1900 should, according to the increased acreage, show a much greater increase. The successful cultivation of brome and other hardy grasses should enable Alberta to secure the Kootenay hay trade which at present is divided between the Pacific coast and Palouse and Colville valley districts in Washington state." The advantages from a shipping point of view of the opening of the proposed Nicaragua canal were also dwelt upon.

The election of officers for the ensuing year resulted as follows: President, C. P. Strang; vice-president, J. H. Gariepy; secretary-treasurer, Isaac Cowie; councillors, J. L. Johnson, T. G. Hutchings, C. Gallagher, G. R. F. Kirkpatrick, S. LaRue, W. Johnstone Walker, John S. Willmott, F. Fraser Tims and Thos. W. Lines.

C. P. R. Annual Meeting.

Montreal, April 4.—Sir Wm. Van Horno presided at the annual meeting of the shareholders of the C. P. R. to-day and, in moving the adoption of the annual report, referred to the prosperity of the country which, he said, showed evidences of being continued. His remarks concluded as follows:

"Another gratifying feature of the company's affairs is the fact that during the past year there has been an addition of 15 per cent. to the list of shareholders' record in Canada and the number is still increasing. A return to the basis of 5 per cent. dividends on your common

shares is an assurance of the conviction of your directors that in the absence of unforeseen commercial disaster no lower standard will be necessary."

C. R. Hoesmer, recently elected to the board, takes the vacancy caused by the death of Sir George Kirkpatrick.

The only change in the list of officials is the naming of D. McNicol as second vice-president, the first vice-presidency not being filled. Mr. McNicol, heretofore, has been known as the assistant general manager.

In moving the adoption of the report President Shaughnessy said it was gratifying to be able to congratulate the shareholders on the excellent results of the operations during the year and the prospects for continued prosperity. The improvement in revenue was largely due to the growth in traffic in every section of the Dominion. The government reports indicate that in Manitoba and the Northwest Territories there will be under crop this season about half a million acres in excess of 1899. The rate per ton per mile for the carriage of freight has been still further reduced. In view of the remoteness of the eastern markets from some sections of the system the policy of the directors has been to reduce rates in order to encourage a maximum development of the country for the purpose of securing an increased revenue from a growth in tonnage rather than the maintenance of high rates. The long distances to haul the traffic because of the situation of the railway and the economy in working are important factors in the successful carrying out of this policy.

Apart from some short lines required to serve growing communities in Manitoba and the Northwest Territories the directors do not at present contemplate any construction involving an important expenditure of capital. The present earnings of the Manitoba & Northwestern, and the Great Northwestern Central railways, to be leased, are already sufficient to meet the interest on the liability involved, and the contributed traffic to the main line will be permanently secured. A gratifying feature of the company's affairs is the fact that during the past year there has been an addition of 15 per cent. to the list of shareholders to record in Canada, and the number is still increasing. A return to the basis of 5 per cent. dividends is an assurance of the conviction of the directors that in the absence of an unforeseen commercial disaster no lower standard will be necessary.

Miners in the Pittsburg region, Pennsylvania, are on strike over their wage scale.

The Viceroy Lord Curzon estimates the loss caused to the wheat crop of India by the drought at £8,000,000 to £10,000,000. The loss on the cotton crop is £7,000,000. Besides these the oil seed crop covering 18,000,000 acres is a dead failure outside of Bengal and the Northwest provinces. These figures will convey some idea of the appalling extent of the calamity which has overtaken India by the drought which has caused the present famine.

The recent London wool sales developed a decline in values of wool amounting to an average on all kinds except those taken for American trade of about 15 per cent. Wools for American account apparently declined about 7-12 to 10 per cent. Early in the sales buying was quite active, but slackened considerably later. Total offerings were 174,000 bales, of which 10,000 came to America, 81,000 go to the home trade, 59,000 to the continent and 24,000 were withdrawn.

THEY GO TOGETHER



AMES HOLDEN SHOES GRANBY RUBBERS

Our Travellers are now on the road with Fall Samples of BOOTS and SHOES, also GRANBY OVERSHOES and GUM GOODS. Full stock carried in Winnipeg of Boots and Shoes and Granby Rubbers. Mail Orders solicited.

The Ames Holden Co. of Montreal Limited

A. L. JOHNSON, Manager Winnipeg Branch.

Buy Granby and get the best without costing more than any other make.

W. H. MALKIN & Co.

Importers and Wholesale Grocers

Special Lines

California Evaporated Fruits,
Japan Rice China Rice
Sago Tapioca
Crosse & Blackwell's Jams, Pickles, etc.
Lee & Perrins' Sauce
Australian Canned Meats

GREEN FRUITS

Full line of General Groceries, Teas,
Coffees, Etc.

371 Water St. VANCOUVER, B. C.

BUTTER WANTED

In bricks or tubs. Top prices
obtained by the

DOMINION PRODUCE CO.

184 James St., Winnipeg

We have a first-rate connection of
long standing amongst the buyers. We
are in a position to get Top Prices.

We will give you prompt returns.

We will buy for you any line of goods
you require, if we do not carry them.
Potatoes, and baled hay handled in
car lots.

P. O. BOX 892.

IMPORT FANCY GOODS

OUR Mr. W. E. DAVIDSON is now
on his way East from the Coast, and
the assortment of IMPORT FANCY
GOODS he is showing will certainly
interest all up-to-date buyers.

In addition to Import Goods he is
carrying a complete line of SPORTING
GOODS and other salable lines for
summer trade.

Write for spring catalogue.

NERLICH & CO. 35 Front St.
Toronto

Now Ready for Fall and Winter



We are now showing the most Complete Line we ever manufactured,
Comprising

Ready-to-Wear Suits, Overcoats, Ulsters, Trousers, Etc. in Men's, Youth's, Boy's, and Children's Clothing

We are represented in Manitoba and the Territories by W. G. Shea and John W. Irwin, who will call
shortly with our whole range, and all orders entrusted to us will receive our best and prompt attention.

McKENNA, THOMSON & CO.

Successors to Jas. O'Brien & Co.

423-425 and 427 ST. JAMES ST., MONTREAL

THE COMMERCIAL IN THE KOOTENAY

Slocan Towns and Mines—Slocan City, Silvertown,
New Denver, Sandon.

Slocan City is situated at the lower end of Slocan lake, in a level valley through which the Slocan river winds its way to the Kootenay river about thirty miles to the south. High wooded mountains rise on either side of the valley, and to the north a very fine view is to be had of a portion of the lake. This is a sportsman's paradise as the lake is well stocked with trout and large game is to be found in abundance back in the mountains. A railway has been built from Nelson to this point, and from here a steamer conveys passengers and freight to Roseberry on the Nakusp & Slocan railway.

five general and two hardware stores, tinsmith, druggist, etc.

Among the mining claims here the Arlington is the best known. This was taken over last year by a new company, and since then a great deal of development work has been done. They have put in an eighteen-horsepower boiler and hoist, and are at present employing about fifty men, which number is being steadily increased as room permits. This mine has shipped some ore which turned out satisfactory.

The Joker group at the head of Ten Mile Creek is now being worked by the Excelsior Mining Co., after being closed down for a while last year.

The Black Prince is being worked by a small force. Several carloads of ore have been shipped which proved to be very high grade.

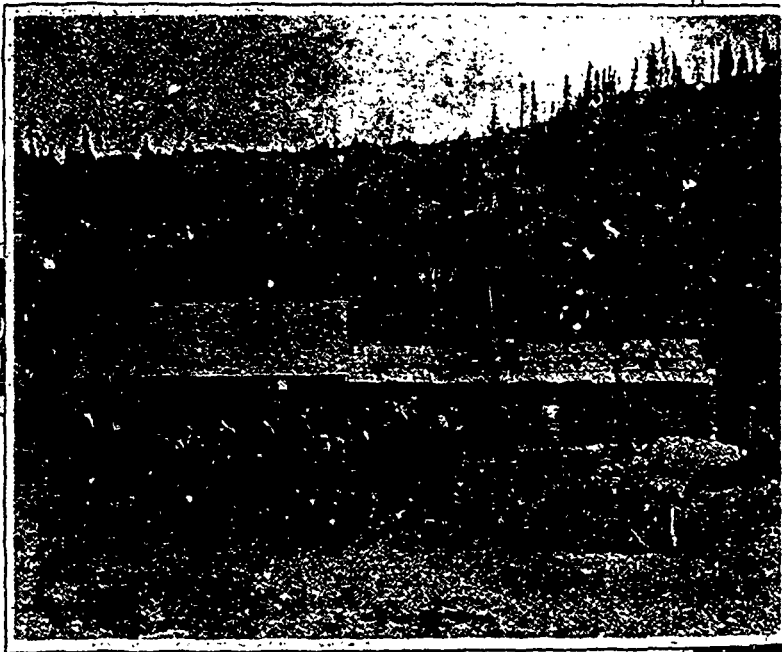
The Enterprise on Ten Mile Creek has been sold to the London and B. C. Goldfields, Ltd., and is one of the well-known properties here. This mine has already shipped a large amount of ore and has a large amount ready to ship.

On the Tamarac some 400 feet of tunnelling has been done. This is another good body of ore carrying galena, zinc and silver sulphide.

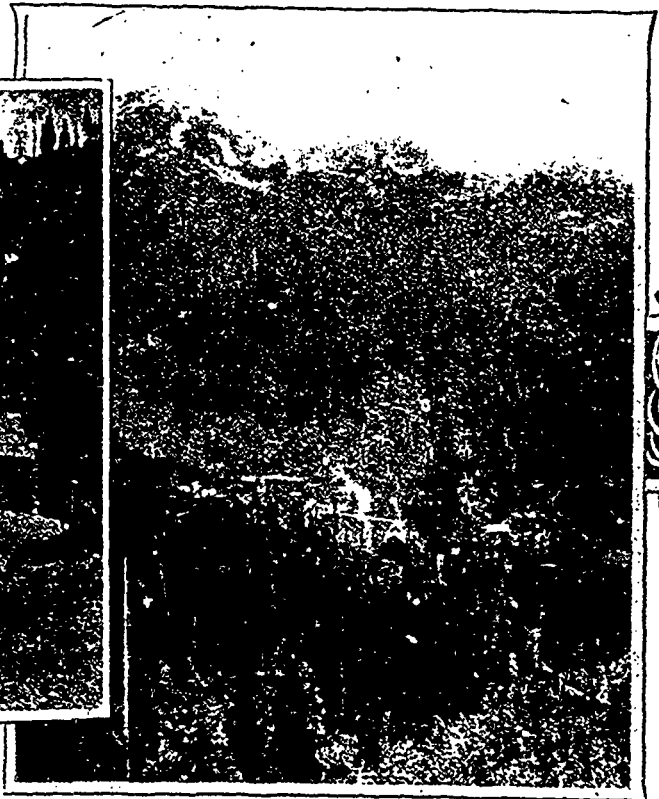
It is thought that the Chapleau will turn out to be one of the big mines of this district. It has been bonded to an English company, who are now working it and it is probable that a stamp mill will be put in this year.

The Two Friends and Bank of England have not been worked of late although a large amount of development work has been done on them. These are looked upon as good properties.

Work is also being done on the Lilly, Rainbow, Barnet group, Alexandria, St. Lawrence, Bertha, Lone Dutch-



Pack Train at Antoine near Kaslo.



Jackson Basin.

This town is only three years old as previous to March, 1897, it contained only about half a dozen buildings. That spring, however, saw a great rush of people who with feverish haste constructed buildings and opened up stores and hotels with the usual results that business was overdone, and the town received a setback from which it is only now recovering. Capital for some reason has been slow in coming in and a great deal of the development work has been done by the prospectors themselves. While this speaks well for the properties still, it means that work has been greatly retarded for want of money. Capitalists however, are now becoming interested in this district and the prospects for the present year are very good. The business places here include

This is a developed mine and has already shipped a lot of ore which gave high returns and they are in a position to resume shipment at any time.

The Evening Star, bonded by Hugh Sutherland, is on Dayton creek, a tributary of Springer creek. Several hundred feet of development work in shafting and drifting has been done on this claim, the ore of which is quartz, with silver sulphide and pyrites with some gold.

The Calumet and Hecla is a large ledge of low grade galena. Between two and three hundred feet of development work has been done and a small force of men are now working on it.

The Ohio group is thought to be the same lead as the Arlington and Enterprise and the work done has showed up very well.

man, Alpine Monument group, White Sparrow, Kilo Smuggler and Howard Faction.

This is only a partial list of the properties in this district now being developed. One great drawback has been the difficulty in getting the ore out as the claims are some miles from the town and as yet there has been very little road work done and the ore has had to be brought down by pack train mostly. The government, however, have built a road to within two miles of Arlington Basin and it is expected that this will be completed this year and a road also built up the first north fork of Lemon creek. These roads and others, which are to follow will lessen the expense and facilitate the handling of the ores so that more mines will be in a position to ship.

JAS. McCREADY & CO.

WHOLESALE

* **Boot and Shoe
Manufacturers**

MONTREAL, QUEBEC

W. WILLIAMS, Agent.

LEITCH BROS.

Oak Lake

"Anchor
Brand" **Flours**

FROM NO. 1 HARD WHEAT.

Bran, Shorts and all kinds of
Chopped Feed and Grain.

ADDRES

OAK LAKE, MAN.

Mills & Hicks

Importers of and Wholesale
Dealers in

Teas, Roasted and Ground Coffees
Jams Etc.

Packers of Britannia, Beaver and Buffalo Blend
of Packet Teas and Sole Agents for Thos.
Lipton's Package Teas for Manitoba, N. W.
Territories and British Columbia.

244 Princess St., Winnipeg

TO THE TRADE

FOR GOOD, RELIABLE
SEEDS, ORDER FROM

J. M. PERKINS
SEEDSMAN

Largest Stock west of Toronto. Send for whole-
sale catalogue. Commission boxes supplied.

MARKET SQUARE, WINNIPEG.

W. R. JOHNSTON & Co.

(Late Livingston, Johnston & Co.)

Wholesale Manufacturers
READY MADE

CLOTHING

Corner Bay and Front Streets, Toronto

Western Representatives: A. W. Tacher W
W. ARMSTRONG.

**Jubilee Brand
Condensed Milk**

TRY IT IN YOUR COFFEE

Better than fresh Milk and equal to Cream
A boon to the Miner and Camper

THE MANITOBA DAIRY COMPANY LIMITED.

HEAD OFFICE:
WINNIPEG.

FACTORY:
LA ROCHELLE, MAN



THE THOMSON MARBLE
AND GRANITE WORKS

James
Thomson
& Co.

—DEALERS IN—

MARBLE & GRANITE MONUMENTS

Headstones, Marble Pieces, Tablets,
Cemetery Fencing, Etc.

Bet. Rosser and Princess Avenues
Eighth St. Nearly Opposite Palace Hotel,
BRANDON, MAN.

Represented by E. A. Alton and John Drysdale

**DICK,
BANNING
& CO'Y**

WINNIPEG

Are you in need of

1 1-2 inch **Lumber**
W. P. Select

ONE THOUSAND DEALERS

Doing business between Toronto, Ont.
and Victoria, B. C., sell cigars of our make.

They are good judges of good cigars.

Their customers demand good Cigars, and
the well known quality of our product satis-
fies them.

If you want a satisfactory smoke ask for

**THE T.L. THE GORDON
THE ROSA LINDA LITTLE PETS**

WESTERN CIGAR FACTORY
THOS. LEE, Prop.

J. D. Lalonde O. Milord

LALONDE & MILORD

Manufacturers of

SHOW CASES, STORE FITTINGS
SASH, DOORS, ETC.

Cor. King and Sutherland Streets
WINNIPEG.

W. G. GUEST

—WHOLESALE—

FISH, OYSTERS, POULTRY

Everything in Season.

Ship us your Poultry.

602 Main Street

WINNIPEG

Write for
Illustrated Catalogue
Describing

**FROST
FENCE
AND
GATES**

Agents wanted in unoccupied terri-
tory. Can deliver goods f. o. b.
Winnipeg.

The Frost Wire Fence Co.

LIMITED.

WELLAND, ONT.

Please Mention.

When writing to advertisers, please
mention that you saw their advertisement
in the Commercial.

SILVERTON.

Silverton is on the east shore of Slocan lake, about four miles south of New Denver. As a business town it has a good situation, being at the mouth of Four-Mile creek, up which a number of very valuable claims have been located, the business from which it receives, as well as a good share from other properties in the district.

The Vancouver mine is six miles from Silverton up Four-Mile creek, and is

erty, all of them on the ledge and exposing ore. In places between the ore chutes the vein is lean, carrying low values, but where the chutes are cut it is very rich. The ore chutes are large and increase in size and value with depth. A 60-ton concentrator has been erected and a wagon road built from the mine to Silverton and a large quantity of ore has already been shipped.

The New Canadian Group, on the

half from Silverton. In 1895 about ten tons of float ore were shipped which showed a value of \$80 per ton, and the property has since shown up well under development. A cross-cut of 40 feet toward the ledge was first made, but this was abandoned and a tunnel driven on a straggle of the parent ledge which gave a pay streak of from 6 to 18 inches of galena, assaying from 100 to 400 per cent silver and 60 per cent lead. The owners of this claim are satisfied that it can be developed into a good mine.

The Fisher Malcha is another property on Four Mile Creek. The ledge lies in granite and the ore is chiefly dry ore carrying grey copper and ruby silver. Assays made run very high, while the smelter returns gave from 220 oz. to 325 of silver per ton.

The Wakefield and Galena mines are considered to be large and valuable properties, but it seems difficult to get any definite information in regard to them.

The Essex group is composed of six claims. A large amount of development work has been done on this. The ore is a cube galena from 4 to 12 inches in width, assaying 200 oz. silver and 50 per cent lead to the ton. It is thought from the character of the ore that this is a continuation of the Wakefield vein. The lie of the mine will permit of it being opened and worked by a tunnel system and great depth can be gained, thus avoiding long and expensive cross tunnels.

The Emily Edith, comprising several claims, is being operated by an English company and development work has revealed a very large ore body ranging from 50 to 60 feet in width, probably the largest vein in the Slocan. The ore is a high grade steel galena, carrying some copper.

The L. H. is a gold proposition, the ore body of which is from 20 to 30 feet in width and samples have assayed \$108, although the average is from \$5 to \$20. The lead is an immense one, and has been traced on the surface for a long distance, and as the ore can be concentrated about ten tons into one and cheaply treated by the cyanide process it is probable that this will become a great mine.

The Congo, a group of several claims, is a gold and copper proposition. There has not been a great deal of work done on this as yet, but tests made have shown the ore to be very rich. From the bottom of one ten foot winze ore assaying \$23.70 in gold and 7.48 per cent copper was obtained and assays of the iron alone gave as high as \$71 in gold, while one specimen is said to have reached the extraordinary value of \$11.160.

The A. E. and Little Daisy also carry gold. On the A. E. there are 20 inches of quartz and assays have been made of \$30 in gold and a large per cent. of copper. On the little Daisy there is a ledge of 8 ft. and a trial shipment to the smelter brought in \$125 per ton.

There are numbers of other good mines and prospects in this locality, among which are the Alpha, Los Vigos, Surprise Group, etc. Of course these are not all operated from Silverton, but the trade of some of them is divided between Silverton and New Denver, which is four miles further up the lake.

NEW DENVER.

New Denver has an ideal spot for a townsite. It is built on a broad plateau which seems to have been



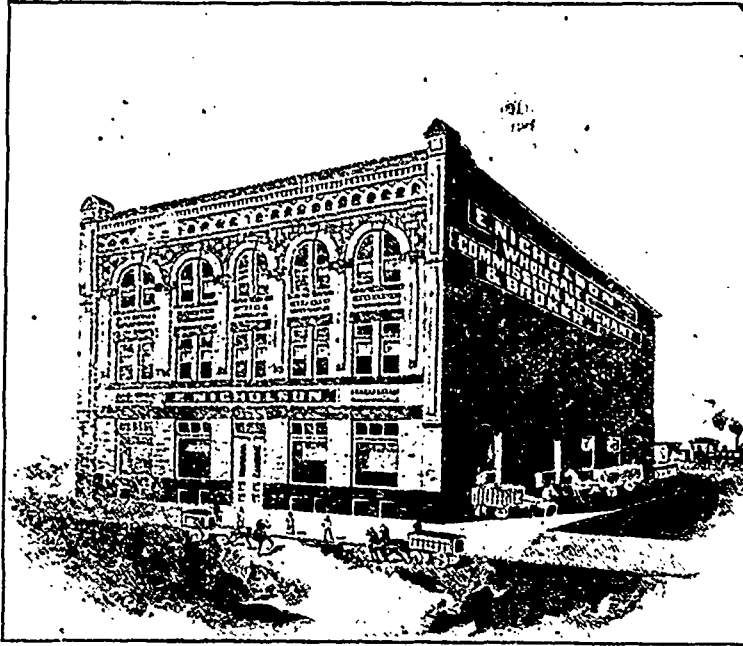
Payne Bluff on Kaslo and Slocan Railway.

one of the best developed properties in the camp. The ore is a steel and cube galena carrying considerable grey copper, some sulphide of copper and ruby silver, and is very high grade, the shipments made averaging about \$145 per ton over and above all charges for transportation, treatment and duty.

About ten miles east of Silverton, on Fennel creek, a branch of Four-Mile creek, is the Comstock mine. Nine tunnels have been run on this prop-

erty, all of them on the ledge and exposing ore. In places between the ore chutes the vein is lean, carrying low values, but where the chutes are cut it is very rich. The ore chutes are large and increase in size and value with depth. A 60-ton concentrator has been erected and a wagon road built from the mine to Silverton and a large quantity of ore has already been shipped.

The Noonday group consists of two claims and is about a mile and a



E. NICHOLSON

WHOLESALE
COMMISSION
MERCHANT and
BROKER

115 Bannatyne St. East
WINNIPEG.

REPRESENTING

Truro Condensed Milk and Canning Co. Ltd.

REINDEER BRAND

CONDENSED MILK
EVAPORATED CREAM
CONDENSED COFFEE

EDWARDSBURG STARCH CO. LTD.

Benson's Prepared Corn
Canada Corn Starch

Silver Gloss, 1 lb. pkgs.
Canada Laundry

DOW & CURRY

JUBILEE BRAND ROLLED OATS

For Sale by all Winnipeg Wholesale Grocers.

put there for the special purpose for which it is being used as few such places are to be found on Slocan Lake, but the mountains forming the shore line rise, in most places, abruptly from the water's edge, in many places presenting a perpendicular front of solid rock. Slocan Lake is famed for its beauty and the view from New Denver is one of the finest to be had.

This is the oldest town on the lake, dating its birth from the spring of 1893, the year after the discovery of ore in the Slocan. It was at first called Eldorado City, but this was soon changed to the name it now bears. As soon as the pioneers arrived they at once commenced erecting log houses and everything presented a very lively appearance for a while. On all hands was heard the sound of the axe and saw and the place was rapidly assuming the appearance of a town when suddenly a temporary check was put to its further growth by the gold commissioner declaring part of the town-site to be a government reserve. A government survey ran a street through a large number of the buildings, which had to be torn down, law suits and disputes arose about parts of the site so that the first year was one of great uncertainty and uneasiness which greatly retarded the growth of the place. These difficulties were, however, finally adjusted, and since then the town has made good progress. Good frame buildings have replaced the log houses, and its business places now include two general stores owned by Bourne Bros. and T. H. Hoben, a branch of the Bank of Montreal, dry goods store, drug store, newspaper, etc. It is lighted by electricity and is a station on the long distance telephone line and has also telegraphic communication with the outside world. The principal mines on Silver mountain tributary to this camp are the California, Marion, Hartney and Mountain Chief.

The Hartney Group, which is composed of six claims, was bonded last November to a Boston company for \$35,000. Development work has been going on since and there are now three openings on the ledge with ore showing in all of them. In the lower drift there are two feet of ore exposed of which a strip of ten inches is sold immediately. A test shipment is to be made immediately.

The Marion was bonded last summer to Montreal and New York capitalists. It has four openings, the last one tapping the ore at a depth of between 500 and 400 feet. This mine it is expected will commence shipment before long.

The California was bonded about a year ago and is now being worked, long tunnels being run in to catch the chute. The ore is galena with zinc blende and copper pyrites and considerable quantities have been shipped which turned out to be very high grade.

The Mountain Chief claims the distinction of being the first shipping mine of this district. A considerable amount of ore was shipped when the mine was closed down, the ledge having been lost in a fault. The ledge was however, discovered again and worked as before, with a very satisfactory showing. It is understood that there is now a deal pending to hand it to a company of Toronto capitalists.

The Northwest mining syndicate secured a \$40,000 bond on the Mollie Hughes claim, situated across Bigelow bay, and a mile or more from the

town. Development work was at once commenced, and a couple of cars of surface ore shipped, which realized about \$100 a ton, but on account of failure to secure an extension of time on the payments the bond was dropped and a bond taken on the Bosun group. The ore is considered to be of good quality, but sufficient work has not as yet been done to prove the claim.

The Bosun group is considered to be the leading mine here. Four months after work was commenced on this group fourteen carloads of ore had been shipped, realizing sufficient to pay for the driving of tunnels sinking of shafts and other expenses. The ore chute in shaft No. 1 commences at the top with a width of one foot and broadened out to four feet at the foot of the slope. In tunnel No. 1 there is a showing of from six inches to two feet of ore carrying considerable zinc, an assay of which gave over 100 oz. in silver.

The Capella group, which is owned by local men, has just been opened up. They have made two shipments, the last averaging about \$100 per ton.

The Adirondack, and the Neglected are two recently developed mines which have the appearance of becoming profitable propositions when opened up.

In addition to these there are a number of very promising prospects. Among the number are the Lone Star, Sandow, Turrill, Eclipse, Merrimac, Denver, Lake View, Convention, Chieftain and many others.

At Roseberry, four miles from New Denver, we leave the steamer and board the train running between Sandon and Nakusp. Going from Roseberry to Sandon we follow the course of Carpenter Creek, the track for the greater portion of the distance, being a continuous series of curves. For the last four miles the grade is said to be the steepest of any railroad in America, where smooth rails are used. To use an engineering term, the grade is nearly 5 per cent.

SANDON.

The manner in which our prairie towns are scattered over many acres of land has been a subject of considerable comment, but the city of Sandon runs to the other extreme. It is in a narrow gulch between two high mountains, which, by the way, are said to contain as great galena ore deposits as any other two adjoining mountains in the world. The main business street is only 33 feet wide and some of the buildings on the one side are built over the creek, while on the other side they extend into the mountain. Some residences and two churches have been built on the mountain side immediately above the town, but with the exception of these the town may be said to consist of one long street, which is capable of being lengthened at either end to almost any extent as it has the whole valley of Carpenter Creek before it. The townsite was staked in January, 1896, and now we find a large number of good business places occupying handsome and commodious premises. It is the terminus of the C. P. R., Nakusp and Slocan branch and of the Kaslo and Slocan Railway, the latter a narrow gauge, running from Kaslo to Sandon. The town is up-to-date in regard to modern improvements, having electric light, water works, etc. The water works reservoir is at a great elevation, which, besides giving a strong head for fire purposes also furnishes an unlimited supply of

pure water for domestic purposes. It has also rather a novel system of hot water heating which is in use by a number of the business establishments. A boiler placed in the centre of the town is connected with the different buildings, in which the system is used by underground pipes. This is a cheap way of heating and the risk from fires is also greatly reduced. This is the most important mining camp in the Slocan, being the base of supplies for such mines as the Payne, Slocan Star, Reco, etc. It has a population of nearly 2,000 and the number of men employed in the mines last year was 1,100.

The Payne mine is the heaviest shipping property in this camp and consists of four claims stocked at \$4,000,000. It has a gravity tram with station on the Kaslo and Slocan railway and Nakusp & Slocan. The carbonates assay 80 to 100 oz. in silver and 35 to 40 per cent lead, while the galena has shown as high as 175 oz. in silver and 70 per cent lead. Over 100 men are being employed now.

The Slocan Star group of eight claims is situated about a mile and a quarter from Sandon. The first workings showed a ledge 13 ft. wide in places, which increased to 30 ft. as work proceeded. The greater part of the ore is concentrating, although immense bodies of pure galena have been mined. This property has a concentrator to which the ore is brought by a 1600 ft. gravity tram. This mine has one of the widest ledges in the Slocan.

The Ruth is also quite close to Sandon and is connected with that town by wagon road. It is composed of eight claims, controlled by the Ruth Mines Co., Ltd., of England. The ledge is from three to nine feet in width and the galena assays about 110 oz. of silver and 60 per cent lead. Last summer this mine shipped heavily and realized some \$75,000 in profits. The average width of the ore is 81.2 feet, though as stated above it sometimes exceeds that two or three times over.

The Last Chance is the second largest shipper in this camp. It covers 120 acres and is made up of seven claims and has paid its way from the very start. A large amount of work has been done on this property and up to January, 1899, 2,500 tons of ore had been mined, and since then shipments have been very heavy. It has an aerial gravity tram and a four story ore house on the K. & S. Railway track.

The Reco was purchased by its present owners, the Reco Mining and Milling Company, in July, 1892, and since then they have added the Texas, New Denver, Clifton and Ephraim claims. This is also a "grass root" property, or in other words, it has paid from the start. Seven tunnels have been driven and at times nearly a hundred men have been employed. From the small vein has come the richest galena yet found in the Slocan, consisting of argentic galena, and ruby silver. One lead is at places 40 feet wide and gives about 175 oz. silver and 75 per cent lead.

The Good-enough is traversed by the same small vein which showed such rich results in the Reco. This mine has not been operated much of late, but what shipment has been done has paid well, averaging about 300 oz. in silver and 55 per cent in galena and somewhat less in the carbonates.

The Ajax adjoins the Last Chance and comprises three claims, the Ajax, Crown Point and Random Shot, the

Stephens

Made with Manitoba
Boiled
Linseed Oil.

Crown Brand

The Quality of the Oil
is the
Life of the Paint.

**PURE
READY-MIXED
PAINTS**

Manufactured by **G. F. STEPHENS & CO., Market St., WINNIPEG.**

The Commercial is mailed regularly every Saturday afternoon, and should be delivered at nearly all Manitoba points by Monday morning or during the day on Monday. Subscribers will confer a favor by notifying this office of any delay or irregularity in receipt of the paper.

FAR-SEEING PEOPLE are the most successful. They look ahead and plan what is best for their future, and with this object in view get a Useful and Money-Making Education at

*WINNIPEG
Business College*

This institution has been largely patronized during the past few years and is now located in splendid premises, fitted up expressly for business college work. Over 100 students have been assisted to positions through its influence in a year. Full particulars on application.

G. W. DONALD, Sec.

JOHN GUNN

Dealer in all kinds of

**BUILDING and
DIMENSION**

STONE

White and Grey . . . **LIME**

Quarried at Stonewall, Stony Mountain and Tyndall.

Office: **402 McIntyre Block,
WINNIPEG**

Box 520.

**THE OLIVER
TYPEWRITER \$95**

The Invoice and Statement work that can be done on the OLIVER, is beautiful to look upon, and costs so little to do, that, putting it broadly, an Oliver Typewriter will save you the wages of at least one invoice clerk, and reduce the chance of error. This is worth investigating.

AGENTS WANTED.

F. A. DRUMMOND, WINNIPEG MAN.

Agent for Manitoba and N.W.T.

Office and Works: 156 ST. ANTOINE ST., MONTREAL.

SEEDS

Merchants for 1900

Push the . . .

Steele-Briggs Seeds

They have the 4 points for success in your seed business, viz:

- 1st—Always Reliable.
- 2nd—Most Widely Advertised.
- 3rd—Most Attractively Got Up.
- 4th—Give a Good Round Profit.

See our big daily and weekly "ads." They don't forget the merchant. Please return the compliment by pushing our seeds, whenever possible, from box or catalogue.

We handle all seeds in all quantities, and cheerfully answer any written or wire inquiries.

The STEELE-BRIGGS SEED CO. Ltd.

TORONTO

COLLECTIONS

**Commercial Co-Operative
Collections Co.**

Solicits all classes of accounts for collection. Highest references.

Office: 5th Floor, McIntyre Bldg., Winnipeg
P. O. Box 882.

**When Stocking
Up This Spring**

You need not be afraid to put in a good supply of

CURRENCY and SNOWSHOE CHEWING

EMPIRE PLUG SMOKING

These Brands are becoming more popular with consumers every day. We are going to help you introduce them by sampling from house to house and extensive advertising, which will make them known in every house where tobacco is used.

FOR SALE BY ALL WHOLESALE DEALERS.

Empire Tobacco Co. Ltd.

former being the only one that has been worked to any extent. The ore runs about 200 oz. in silver and 65 per cent. lead and a considerable quantity has already been shipped.

The Ivanhoe, Elgin, Bendigo, Morning, Tom Bowling, Transit, Big Kanawha, Great Eastern, Admiral Nelson, Klitchner and Valario are all controlled by the Minnesota Silver Co. and from all appearances this company will be one of the largest shippers of the camp. A great deal of work has been done on this property but as yet very little has been shipped. Several thousand tons of ore are ready to ship when the tramway and concentrator to be built next summer are completed. On the Ivanhoe there are workings over 1,100 ft. from apex to lower tunnel and show concentrating ore from top to bottom. The ore has assayed 100 oz. silver and 70 per cent. lead.

The Noble Five is one of the oldest mines in the camp and is about three and a half miles from Sandon. The ore consists of both solid galena and carbonates. It embraces eight claims and is traversed by three distinct ledges. Some samples of galena have run 255 oz. in silver and 70 per cent. lead, but this, of course, is not the average value of the ore. Some difficulties have been experienced in the development of this property but a short time ago fresh capital was invested in it and it is generally conceded that this will become a first class shipping mine. The Sovereign, a group of three claims, has done some shipping which has given very satisfactory results, some of it running as high as 100 ounces in silver and 60 per cent lead. The vein averages about five feet in width.

Other mines in this district which are showing up well are the Rambler, Queen Bess, American Boy, Sunshine, Yakima, Madison, Argo, Wonderful, Miller Creek, etc.

Slocan City, Silverton, New Denver, and Sandon are the principal camps of the Slocan mining district. A few of the mines have been well worked and as a result are widely known, but there are a great many claims showing very rich ore which are still unknown outside of the district, but which only require capital to convert them into profitable shipping mines. The strike trouble, it is hoped, is now settled and as a general rule the merchants and others are looking forward to a busy season, which is sure to come unless further trouble arises between the miners and mine owners. A description of the mineral resources of this district has been issued by the Mining Review, one of Sandon's weekly newspapers, which gives very full particulars of all the leading mines and claims.

Winnipeg Prices a Year Ago.

Following were Winnipeg prices this week last year:

- Wheat—No. 1 hard wheat quoted at 60 1-2c March delivery.
- Flour—Local price per sack: Patent, \$1.80, best bakers, \$1.60.
- Oatmeal—\$1.90 per 50 pound sack of Manitoba meal.
- Millstuffs—Bran, \$11 per ton; shorts, \$13; delivered to city dealers.
- Oats—Carlots on track, 34 to 37c for feed.
- Flaxseed—Per bushel, retail, \$1.00.
- Barley—28 to 33c per bushel.
- Corn—In carlots, 41 to 43c per bushel of 56 lbs.
- Butter—Dairy, jobbers offer 13 to 17c; creamery, 22 to 23c to retail trade.
- Cheese—10 to 10 1-2c per pound.

Advertise

Businesses for Sale,
Partners Wanted,
Etc., in The Commercial.



"Enclosed please find \$2.50 for advt. in your paper. The result was first class." So writes a merchant who advertised a business for sale in The Commercial. Place for sale or want advts. in The Commercial. It reaches nearly all business people in the West.



Eggs—Buyers offer 16c for Manitoba fresh.

Hides—No. 1 green hides, 3 1-2c; frozen stock, 6 to 6 1-2c per lb.

Wool—8 to 8 1-2c for unwashed fleece. Seneca—19c per lb.

Hay—Baled, \$6.50 to \$7.50, per ton on cars.

Potatoes—10 to 15c per bushel.

Dressed Poultry—Turkeys, 10 to 12c per lb.; chickens, 10 to 12c; geese, 10c; Live chickens, 70 to 80c per pair; live ducks, 30 to 40c per pair.

Dressed Meats—Fresh killed beef, 7 to 8c; mutton, 7 to 8c; fresh killed mutton, 9 to 10c; lamb, 8 to 9c; hogs, 6 to 6 1-2c; veal, 6 1-2 to 7c.

Live Stock—Cattle, 4 to 4 1-2c for Lutchers' stock; stockers, \$10 to \$14 for yearlings; sheep, 4 1-2 to 5c; hogs, 4 1-2 to 4 1-2c off cars for selected weights.

The new scale for the mining of bituminous coal in Pennsylvania went into effect on April 2. The miners now receive the highest wages in thirty years. The event was celebrated Saturday night.

Overall Clothing



The only factory in Canada making

Union-Made Overalls

They're made right. They're sold right. Ask for them. All good merchants sell them.

The Hoover Mfg. Co. Ltd.

Maw's Block WINNIPEG.

Store for Sale.

In the village of Grenfell, N. W. T., 54x26. 6 rooms over, good cellar. Apply to C. R. Tryon & Co., Grenfell.

For Sale.

THE SNELGROVE HOUSE, ARDEN.

Proprietor retiring. Everything in good running order. Garden and stable on separate lots. Easy terms to the right stamp of buyer. Apply M. E. Boughton, Arden, Man.

Typewriter.

Second-hand typewriter for sale cheap. Apply to The Commercial.

Storage.

I have first-class facilities for storing all kinds of merchandise. Warehouse on Transfer track. Lowest rates of insurance in the city. For rates, apply to E. Nicholson, 115 Bannatyne St. East, Winnipeg, Man.

A Rare Opening.

GROCERY AND GROCERY RETAIL BUSINESS FOR SALE.

This business was established back in the 70's, and is one of the most favorably known, and widely connected in this line in Winnipeg.

It comprises a \$1,500 stock of groceries and shop fixings, and a \$2,000 stock of fine crockery and glassware.

Easy terms will be given to the purchaser of the stock and good will of this business. This is an excellent opportunity for a young man with a small capital to at once step into a running concern equipped with a steady run of reliable old-time customers.

Ill-health is the reason which occasions the retirement of the owner from this business.

For particulars, apply to Harold Turnbull, 572 Main street, Winnipeg, vendor's solicitor.

Business for Sale.

In an old settled district on branch line C. P. R. A good clean stock of general merchandise, amounting to about \$4,000.00. Terms half cash, balance on time to suit purchaser. Apply M., care The Commercial, Winnipeg.

Partner Wanted.

An active partner for "good paying" general store in Manitoba. Must have at least \$1,500 to \$2,000 in cash. This is a splendid chance for young man. Apply immediately to A. R., care The Commercial.

Business for Sale.

A Lumber, Flour and Feed Business to dispose of on the C. P. R. main line west. Fine opening for anyone with sufficient capital. Business well established. Address P. O. Box 36, Grenfell, Assn., N. W. T.

Business for Sale.

Flourishing meat business for sale in the town of Edmonton. Splendid chance for good man. Will have a railroad here coming summer. Good reasons for selling. Or would rent the place for 12 months, with right to buy if desired, at end of term. Apply M. E. A. T., care The Commercial, Winnipeg.

Book-keeper.

Wants a steady situation as office manager, (British Columbia preferred). Thoroughly conversant with double entry, balance sheets and departmentalising; also municipal and mining books. First-class references. Apply P. O. Box 176, Portage la Prairie, Manitoba.

To Let.

Immediately. Blacksmith shop and dwelling house, with tools. Apply to K. D., care The Commercial.

A Business Opportunity.

For sale, a good general business and lumber yard, situated in the Northwest Territories on main line C. P. R. An excellent chance for a man with small capital. Reasonable terms given to reliable man.

The district is well and favorably known. Any one looking for an opening will please communicate with "J." care The Commercial, Winnipeg.

DINNER
SETSTEA
SETS

BUYERS OF CROCKERY, CHINA,
GLASSWARE, LAMPS
AND LAMP GOODS **ATTENTION**

Having secured the Sole Agency in Western Canada for five of the largest American Factories and one of the best and most reliable of English Potteries, am now in a position to supply the Trade with their requirements at PRICES NEVER BEFORE OFFERED. All goods shipped direct from the manufacturers. Write for Catalogue and Price Lists.

You can SAVE MONEY on every purchase.

H. J. BOYD

**ASHDOWN BLOCK
WINNIPEG**

TOILET
SETS

LAMPS

BE NOT DECEIVED

From the same fine Cuban leaf, as fine Cigars can be made in Canada as in Havana. We have the mechanical skill to do it. The best best proof of this is

LA TOSCANA

Made from the finest imported tobaccos by first class mechanics, and
EQUAL TO ANY IMPORTED GOODS
 A fair trial will convince any smoker of this fact

RELIANCE CIGAR FACTORY

C. H. NELSON
 PROPRIETOR MONTREAL

The Elevator Commission.

Ottawa, April 4.—The report of the elevator commission, a brief summary of which has already been given in this correspondence, was presented to parliament last night. It is signed by all the commissioners, Judge A. E. Richards, chairman; W. F. Strret, W. Lohlan and Charles C. Castle, commissioners. The principal grievances which the commission inquired into were: First, that a vendor of grain was subjected to an unfair and excessive dockage of his grain at the time of sale. Second, that doubts existed as to the fairness of weights allowed or used by owners of elevators. Third, that owners of elevators enjoyed a monopoly in the purchase of grain by refusing to permit the erection of flat warehouses where standard elevators are situated, and were able to keep the price of grain below its true value, to their own benefit and the disadvantage of others who were especially interested in the grain trade, and of the public generally. At all the meetings parties were present who were interested on both sides.

REGARDING ELEVATORS.

In regard to elevators, the report says: "We do not desire in any way to censure elevator owners or employees as a body. But it is reasonable to believe that where there are so many elevators there will be employees who will take advantage of the farmers if it is in their power to do so. It seems to us, that apart from any abuse of the power given by the elevator system, it is unfair to require a farmer to pay to have his grain passed through an elevator so long as either by loading direct on cars, or by the use of a flat warehouse such as recommended in this report, he can save or decrease that expense."

GRADES AND WEIGHTS.

The report goes on to say that grades and weights should be made compulsory by law where the identity of the grain is not preserved by the elevators. Where employees do appear to have dealt unfairly with the farmers, the elevator owners did not profit thereby. Elevator and warehouse owners and operators should be compelled to give security for the proper performance of their duties. The warehouse commissioners are recommended to be given power to deal with shirkages. The report says: "We consider that a proper relief for the possibility of being compelled to sell under value and of being unduly docked for cleaning is only to be had by giving the fullest obtainable free com in the way of shipping and selling grain. It is only in such a way that the great agitation and the bitterness of feeling which has arisen can be ended."

FURNISHING CARS.

So long as any farmer is hampered or hindered from himself shipping to a terminal market, he will be more or less at the mercy of elevator operators. Discontent on this point is very serious, and without further discussing the causes giving rise to such, this discontent seems to us an inevitable result of the restrictions under which farmers have been laboring in the marketing of their grain. We consider that to remove this trouble the law should require all railroads to furnish cars to farmers for the shipping of their own grain, and should allow the establishment of shipping points, if required, of flat warehouses, under proper regulations, by means of which a farmer who can-

not conveniently load on cars direct, can, for a comparatively small sum, obtain for a limited number of days the use of a bin of the capacity of a carload. He can then transfer his grain to this bin until he accumulates a carload, to be then at once shipped. Furnishing cars to farmers should be given as a legal right, and not as a privilege.

PROSECUTIONS.

The report recommends the erection of loading platforms free of charge. The commissioners say that laws should be enacted and rules made under the power given by a law which would properly regulate the grain trade, and prosecutions under the law should be conducted at the public expense by a warehouse commissioner to ensure the enforcement of the law. The report is an able and interesting document and reflects credit on the secretary of commission, C. N. Bell, as well as the commissioners.

THE COMMERCIAL MEN.**CHAS. HOLDEN.**

Chas. Holden has been on the road in the west for the past four years, in the footwear trade, most of this



Chas. Holden.

time with Arthur Congdon, Winnipeg. He is now with the Winnipeg branch of the Canadian Rubber Company, and will work the Canadian Pacific Railway main line through to the coast. Previous to this season he has worked the main line to Calgary, together with the Edmonton and Macleod branches and the Kootenay district. Mr. Holden has been practically brought up to the shoe trade. He spent a number of years in the retail trade before going on the road, first in Ontario and later with leading Winnipeg houses.

UNITED TRAVELLERS.

Winnipeg Council, No. 154, United Commercial Travellers' of America, held a special meeting Saturday evening. Senior Counselor Horace Wilson presiding. The meeting was called for the purpose of initiation of candidates and the following "went over the road": John Rudolph, F. J. Fair & Co., Brantford; Samuel J. Meigton, Geo. E. Tuckett & Son, Hamilton; Geo. E. Warren, Chicago Hotel Cabinet Co., Harry E. Dear, with R. S. Williams & Sons Co., Toronto; Winkle J. Brown, Atlantic Refining Co., Toronto; Geo. E.

Greenleese, Silverman, Bouter & Co., Montreal; F. J. Lavoie, Richard & Co. St. Boniface; also the following with Winnipeg firms: A. B. Sprout, Codville & Co.; Reginald Neve, Todville & Co.; C. B. Little and D. B. McLeod, J. I. Case Threshing Machine Co.; A. Bright, K. J. Johnston, Bright & Johnston; Jno. M. Scott, Strang & Co.; Duncan Fraser, Scott & Co. In addition to the fifteen initiated there were received a large number of new applications for membership. The committee on arrangements report everything moving along nicely for the ball the latter part of the month of April.

DOINGS OF TRAVELLERS.

T. Whitehead went out on a western trip this week.

H. W. Gerhardt was at his rooms in the McIntyre block this week.

Thos. Conlan was at his rooms in the McIntyre block this week.

Harry Kite was at his sample rooms this week in the Sanford block.

Geo. E. Gilroy is on the road with samples for R. C. Wilkins, of Montreal.

C. G. Duncan, representing J. D. Ivey & Co., Toronto, was in the city this week.

W. G. Shera, of McKenna, Thomson & Co., displayed his new samples in the city this week.

H. J. Tugwell, who has been on the road in the west for some time, is opening business as manufacturers' agent in Winnipeg.

R. R. Gallagher and Geo. M. Newton were at their sample rooms in the McIntyre block this week, arranging their samples for the road. They have received their lines of domestic wools for the fall trade.

R. R. Gallagher, western representative of Greenshields, Son & Co., will erect a very nice brick residence in Winnipeg this season, on Edmonton street, south of Broadway, for which plans have been prepared.

Wm. Hargreaves returned to the city from a somewhat prolonged western trip, in time to preside at the U. C. T. A. on Saturday last. Mr. Hargreaves had a rather uncomfortable experience while in the west, having been among the unfortunate who were quarantined at Nelson, B. C., on account of a smallpox scare.

Thos. A. Montgomery, an old and well known western traveller, again took the road this week, after a long confinement from an accident which befel him nearly a year ago, at Wawanesa. In descending the steep hill at that place, the horses became unmanageable and Mr. Montgomery was thrown out, both his legs being broken. His friends will be glad to learn that he is again able to take to the road. He is handling the samples of Kyle, Cheesbrough & Co., in which work he is associated with H. W. Gerhardt.

The Waterous Engine Works Company, Winnipeg, have just finished the construction of a fire engine for the city of Santiago, Chili.

A scheme is on foot to establish a large shipbuilding yard at Halifax. The establishment of the iron works at Sydney, C. B., makes it possible for such a scheme to be worked successfully.

The C. P. R. land sales for the month of March aggregated 51,183 acres for \$97,778. For the same period of 1899 the sales were 24,046 acres for \$74,440. The Canada Northwest Land Company sold 7,000 acres for \$37,700.

HOTEL LELAND



THE PALACE FAMILY AND
COMMERCIAL HOTEL

Rates \$2.00 to \$4.00 per Day

Second to nothing in Canada.

W. D. DOUGLAS, Manager.

City Hall Square, Winnipeg.

RAW FURS

Highest cash price paid for
shipments of Raw Furs of
all descriptions.

M. F. ST. JOHN

For M. Axelrad & Co., London, Eng.

**BUYER OF
RAW FURS**

532 MAIN STREET, - WINNIPEG, MAN.

Write for Price List.

WE PLACED MORE

FURS

in Manitoba and N.W.T. last season than in any
previous season in our history.

Our representatives will call on you shortly
with a specially choice range of samples.

JAMES GORISTINE & CO. LTD.

Representatives :

Man. & N.W.T. : W. G. RICKERT
B. C. & N.W.T. : T. C. JOHNSTON

469 to 477 St. Paul Street,
MONTREAL.

The Jobin-Marrin Co.

**WHOLESALE GROCERS and
COMMISSION MERCHANTS**

We are offering this week something new and
good in the YRAST line. Put up by Gorman
Eckert & Co., and known as **Mrs. Madden's**.
Already our sales have been quite large. Mail
orders given prompt attention.

We handle country produce to the advantage
of our Customers.

Market Street East, - Winnipeg

THOS. CLEARIHUE

BROCKVILLE, ONT.

Manufacturer of

Gloves and Mitts

And Wholesale Dealer in

MOCCASINS AND SOCKS

WINNIPEG AGENCY:

285 MARKET ST

T. & H.

Plug and Cut Tobacco

Try the new fours. They are giving
entire satisfaction. Pays the retailer a
handsome profit.

THE GEO. E. TUCKETT & SON CO.

LIMITED

HAMILTON

Tees & Pesse, Agents, Winnipeg.

Be Progressive
Increase Your Trade
Satisfy Your Customers

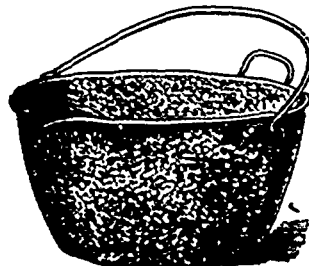
- BY SELLING -

McCLARY'S

STEEL ENAMELLED WARES

Made in four lines, viz :

TURQUOISE, WHITE



FAMOUS and IMPERIAL

These are the perfected production of long
experience. There is none better made anywhere.
Sold by all the leading dealers in Canada. Let us
send you a sample order. We also carry large
stocks in all the other various lines we manufacture.
PROMPT SHIPMENT.

The McClary Manuf. Co.

183-185-187 Bannatyne Ave. E.
WINNIPEG.

London Toronto Montreal Vancouver

BARLEY WANTED

We are now in the market
for good brewing Barley.
Farmers will do well to
forward us samples.

E. L. DREWRY

Redwood Factories

WINNIPEG, MANITOBA.

S. A. D. BERTRAND

**ASSIGNEE and
TRUSTEE**

For the Province of Manitoba, under the
recommendation of the Board of Trade of the city
of Winnipeg.

Insolvent and Trust Estates Managed with
Promptness and Economy.
Special attention to Confidential business En-
quiries.

King Street, Winnipeg, Man.

WM. FERGUSON

WHOLESALE

Wines, Liquors and Cigars

8th ST., BRANDON

Statistical Wheat Report.

WHEAT IN CANADA.

Stocks of wheat in Canada at principal points of accumulation are reported as follows:

Montreal	51,000
Toronto	66,000
Kingston	66,000
Coteau, Que.	111,000
Depot Harbor, Ont.	387,000
Winnipeg	420,000
Manitoba elevators	6,800,000
Fort William, Port Arthur and Keewatin	3,937,000

Total March 24 10,637,000
Total a year ago 9,917,000

BRADSTREET'S REPORT OF STOCKS.

Total stocks in the United States and Canada, east of the Rocky Mountains, as reported by Bradstreet's March 24, were 81,542,000 bushels.

Total stocks in the United States and Canada a year ago were 51,375,000 bushels, according to Bradstreet's report.

Pacific coast wheat stocks on March 1 were 7,814,000 bushels, compared with 5,923,000 bushels a year ago.

THE VISIBLE SUPPLY.

The Chicago visible supply statement of stocks in the United States and Canada, east of the Rocky Mountains, for the week ending March 31, was 34,204,000 bushels, being an increase of 111,000 bushels for the week. A year ago the visible supply was 29,957,000 bushels two years ago 30,223,000 bushels, three years ago 38,612,000 bushels, and four years ago 60,322,000 bushels.

STOCKS OF OATS AND CORN.

The visible supply of oats in the United States and Canada, east of the Rocky Mountains is 7,556,000 bushels, compared with 11,129,000 bushels a year ago. The visible supply of corn is 21,558,000 bushels, compared with 22,737,000 bushels a year ago, according to the Chicago statement.

WORLD'S WHEAT STOCKS.

Stocks of wheat in America and Europe and afloat for Europe March 1, in each year, for a series of years, were as follows—Bradstreet's report:

	Bushels.
1900	159,681,000
1899	124,389,000
1898	118,545,000
1897	133,721,000
1896	172,134,000
1895	193,746,000

CROP MOVEMENT.

The following table gives the receipts of wheat at the four principal United States spring wheat markets, from the beginning of the crop movement, Aug. 1, 1899, to date, compared with the same period of last year:

	This crop.	Last crop.
Minneapolis	65,578,610	69,800,446
Milwaukee	8,495,592	10,787,676
Duluth	42,748,432	64,019,890
Chicago	19,791,813	29,001,553

Total 136,794,447 173,658,545

The following table gives the receipts of wheat at the four principal United States winter wheat markets, from the beginning of the crop movement, July 1, 1899, to date, compared with the same period of last year:

	This crop.	Last crop.
Toledo	10,509,542	11,731,850
St. Louis	8,109,889	12,005,042
Detroit	3,749,158	4,403,437
Kansas City	12,703,890	23,670,013

Total 34,672,479 52,815,372

Grain and Milling Notes.

W. G. Douglas, flour and feed merchant, Winnipeg, has secured a supply of speltz seed and will have it grown this year to test its capabilities as a cheap feed. Speltz is very highly recommended by those who have tried it for feed. It yields heavily, and is also said to grow so thick as to kill out all weeds which may be in the land.

It is expected that there will be a large increase in the production of flax seed in the Northwestern States owing to the good price which has been paid for last season's crop. A flax fibre mill is to be started this year in North Dakota to take care of the straw from the flax crops which has heretofore, been largely a waste product. This will be manufactured into linen paper.

Manitoba Wheat Stocks.

There was 3,619,000 bushels of wheat in store at Fort William on March 30, compared with 3,004,000 bushels a year ago; 719,000 bushels two years ago; 3,065,000 bushels three years ago; 3,869,000 bushels four years ago; 910,000 bushels five years ago and 2,205,000 bushels six years ago. Receipts at Fort William last week were 250,000 bushels and shipments were 168,000 bushels. Stocks of wheat at Fort William, Port Arthur, Keewatin, Winnipeg and interior country points were estimated, approximately at 9,960,000 bushels, compared with about 9,250,000 bushels a year ago, 3,400,000 bushels two years ago, and 6,125,000 bushels three years ago, and 8,000,000 four years ago.

Winnipeg Grain Inspection.

For the week ending March 30 there were 475 cars of grain inspected, grading as follows:

Wheat—1 hard, 278; 2 hard, 70; 1 northern, 11; 2 northern, 1; 3 hard, 54; 1 frosted, 14, 2 frosted, 2; 1 rejected, 8; 2 rejected, 3; no grade, 14; 1 white eye, 2, condemned, 1 car.
Oats—2 white, 9; 2 mixed, 4; feed, 2; No. 3, 2 cars.

KIRKPATRICK & COOKSON
MONTREAL

Consignments of Grain and Manitoba Produce solicited.

F.O.B. offers of Wheat, Barley, etc., requested
Established 1860. Manitoba Grain Code used

JAMES CARRUTHERS & CO.

...GRAIN EXPORTERS

MONTREAL,
TORONTO and WINNIPEG.

O. TILT, Manager Winnipeg Branch.
Office: Grain Exchange.

THE WINNIPEG ELEVATOR CO. LTD.

GRAIN EXPORTERS

GRAIN EXCHANGE - WINNIPEG

WM. S. LOGAN

GRAIN AND COMMISSION MERCHANT

ROOM 241 GRAIN EXCHANGE

WINNIPEG

W. C. GRAHAM

GRAIN DEALER.

Wire or write for prices before selling.

P. O., Box 218.



WINNIPEG GRAIN AND PRODUCE EXCHANGE

President W. L. PARRISH

Vice-President WM. MARTIN

Secy.-Treas. CHAS. N. BELL

THOMPSON SONS & CO.

GRAIN COMMISSION MERCHANTS.

GRAIN EXCHANGE, WINNIPEG

We would ask MILLERS & GRAIN DEALERS in Manitoba and the Northwest to correspond with us when shipping or selling wheat at Fort William or Duluth. We make a specialty of this business, having unexcelled facilities for doing it to advantage, attending to the grading, getting returns promptly, insuring and financing, and we make prompt and satisfactory settlements.

DAILY MARKET REPORT SENT FREE.
References: Any chartered Bank in Manitoba or N. W. T.
Members: Winnipeg Grain Exchange, Fort William Board of Trade.

ALEX. MCFEE & Co.

GRAIN EXPORTERS

Board of Trade Bld'g Room 18, Grain Exchange
MONTREAL WINNIPEG

W. GIBBINS & CO

GRAIN BROKERS and MERCHANTS

GRAIN EXCHANGE, WINNIPEG.

Highest prices paid and advances made on bill of lading and Winnipeg inspection
Chicago options attended to for 1/2c. per bushel.

A. E. MCKENZIE & Co.

Dealers in

FIELD SEED GRAIN AND GRASSES.

Also

GARDEN SEEDS OF ALL KINDS.

Write for our Catalogue.

BRANDON.

MAN.

Chocolates

W. BAKER'S SOLUBLE	COWAN'S PERFECTION
" CARACAS	" ROYAL NAVY
" PREMIUM	" POWDER
" ALDENS	" DIAMOND
" GENNART SWEET	
MOTT'S DIAMOND	CADBURY'S MEXICAN
FRY'S "	CHOCOLATE MENIER

COCOA

BENSCHORP'S	GROOTE'S
VANHOUDEN'S	EPP'S
WEBB'S	COWAN'S PERFECTION
W. BAKER'S BREAKFAST	" NIBS
CADBURY'S ESSENCE	FRY'S SOLUBLE
EXTRA CHOICE, BULK	" HOMEOPATHIC
KING OF SCORCHER, BULK	

LUCAS, STEELE & BRISTOL
HAMILTON, ONT.

C. R. DIXON, CALGARY

THE NINETEENTH CENTURY

Has passed away, and with it let pass away all your follies in eating and drinking. Commence the regular use of

OXOL

And the aged and drooping will enjoy decades of rugged health, while the young and strong will live to enter upon

THE TWENTY-FIRST CENTURY

The trade supplied through the wholesale grocers or druggists or direct from the factory.

HEADQUARTERS:

Cor. St. Peter and Foundling Streets, MONTREAL

R. J. GALLAGHER, North Western Agent, Winnipeg.

BUYING EAST

Many lines you cannot buy elsewhere than East, but for Printing, whether it be Counter Books or Posters, Catalogues or Ledgers, or any filler for patent binders or otherwise, you need not go out of our own Province, or past the

Franklin Press...

Successors to
Buckle Ptg. Co.

PRINTERS

293 Market St. **Winnipeg.**
Opp. Grain Exchange.

APPLETON & MORRIS

WRITE FOR QUOTATIONS.

SOME SPRING LINES



WALL PAPERS

Elegant Fringes and Borders
All New Goods

SHIRT BAGS

HAT BAGS

MILLINERY BAGS

FEATHER BAGS, Etc.

WRAPPING PAPERS

PAPER BAGS

TWINES, Etc.

FULL STOCK

GOOD VALUES

THE CONSOLIDATED STATIONERY CO., Ltd

McDERMOTT AVE., WINNIPEG

Grocery Trade Notes.

Persian dates show a firmer tendency in producing markets.

Sicily filberts have again advanced in primary markets. The coming crop has been damaged by frost.

Independent packers on the Columbia River intimate that \$1.50 will be the lowest possible price for No. 1 talls, pack of 1900.

On March 28, Arbuckle Bros., of New York, reduced their price of sugar five points to the great surprise of the trade. Other refineries refused to meet the cut openly.

The first cost of Barbadoes molasses at the island is now 17c per gallon. This is an advance of 1c over previous quotations. It is predicted by some on the spot that this high price will be exceeded shortly. The tone of the market is firm in Canada in sympathy with the situation at the island.

A New York estimate puts the stock of currants in that city on March 1 at 5,261,000 pounds as against 4,465,300 a year ago. As against this seemingly bearish position it is stated that the demand is now somewhat larger and that the bulk of the remainder of the stock in Greece is contracted for by Europe. This feature makes holders of currants in America very firm in their views.

Dry Goods Trade Notes.

Canadian buyers now in England making purchases for next fall and winter's trade are having an endless amount of trouble getting orders placed. British manufacturers are so busy with home trade and orders which have been placed a long time ahead that they cannot handle all the business which is offering. This should make the goods carried over from the past fall and winter in Manitoba good stock, as all these lines are sure to be greatly enhanced in value next season. It is to be hoped in the interests of trade that the full amount of the advances which must be made on new goods will be applied to these held over stocks, thus preventing price cutting and the loss of amount represented by interest accrued on the held over goods.

THE IMPLEMENT TRADE

BINDER TWINE DILEMMA.

The consumer will have considerable difficulty in deciding this season whether to buy binder twine early, at present high prices, or wait to the last minute in the hope of securing a lower rate. There are usual two horns to the dilemma, and which one to grasp is the perplexing question. Binder twine is now very high, and there seems to be a general impression that prices will be much lower next year. Herein lies the difficulty. Manufacturers will be very cautious this year not to manufacture more twine than will be required. It is known that jobbers and large dealers are buying very sparingly, as they do not want to carry over any twine this year, feeling certain that twine will be much lower next year. This caution may result in a great scarcity of twine toward the end of the season, and the consumer who does not secure his twine before hand, may get left. On the other hand, should there be a surplus of twine at the end of the season, there will likely be some sharp cutting in prices, enabling the consumer to secure much cheaper twine than he could now

get. Just how the season will wind up in binder twine will depend greatly upon the crop. If the crop should be heavy, requiring plenty of twine, there will likely be a scarcity of twine. If the crop is light, there may be a surplus of twine. As the Manitoba harvest is the latest on the continent, any surplus twine from the south could be sent up here. The farmer who secures his twine in advance will be safe, even though it should cost him more than if he had waited until he had to have it. The one who waits for a possible drop, may get left entirely. In the latter case, the one who has secured his twine, at present high prices, will be far better off than the one who waited for the wind up of the season. Dear twine will be better than no twine, and even better than cheap twine, providing the farmer has had to wait for cheap twine until his crop is over-ripe.

THE DETESTABLE LIAR AGAIN.

An agent of a Winnipeg implement concern, located at a certain country town, recently sold a seeder at \$5 less than the regular price. This agent was a new man and not yet up to the tricks of the farmers. A farmer came to him to buy a seeder, and after getting the price of the implement, stated with great assurance that he had been offered the same seeder, by another agent of the same house at a neighboring town, at \$5 less than price quoted. The agent swallowed the story and concluded that he had as good a right to cut the price as the other agent. So he booked the order at a cut of \$5. The order however, was returned to him by the Winnipeg house with instructions to get the full price or cancel the sale. The story made by the farmer about the cut offered by the other agent was of course a pure fabrication. It is a lamentable fact that many customers habitually lie about alleged prices quoted to them by other dealers, in order to secure a cut on articles they wish to purchase, yet business men continue to be verdant enough to believe such statements and encourage a continuation of the practice by making the cuts asked for. Much of the price cutting difficulties of business men in all branches of trade is due to the lying of customers.

Implement Trade Notes.

R. H. Verity, manager of the Verity Plow Works, Limited, of Brantford, Ontario, has accepted an offer from the Massey-Harris Company to manage their factory at Toronto.

Warden Platte announces that the time for receiving orders from farmers and retailers for binder twine at the Kingston, Ont., penitentiary, has been extended to the first day of May, 1900.

Sisal hemp was the subject of a temporary reduction in prices a week or so ago in the States, but has fully recovered the lost ground again now on active buying. There seems to be no chance for any weakness in hemp or twine prices to hold with the general situation so bullish as it is at present.

Lumber Trade Notes.

McArthur & Co. started their planing mill at Winnipegosis on Monday. It is likely to be kept going until fall.

Prices of quarter sawed oak are being shaded by some United States dealers in anticipation of an increase in the supply very shortly. Other lines

of hardwood remain firm, and supplies are scarce.

It is estimated that the output of logs in the Georgian Bay district this season will reach 500,000,000 feet. Of this amount fully 60 per cent is said to have been sold already.

Live Stock News.

Reports from the sheep raising district around Walsh, Alberta, indicate that the sheep have come through the past winter in fine condition.

The British government has issued an order to take effect April 30, prohibiting the importation of live animals from the Argentine Republic, owing to the prevalence of foot and mouth diseases there.

Tenders.

Offers of a plan for a \$10,000 church are wanted by Robert Lee, of Edmonton, Alberta.

The time for receiving tenders for the proposed Y. M. C. A. building at Winnipeg has been extended to the 11th inst.

Tenders will be received until the 12th inst. for the erection of a brick and stone residence on Notre Dame Avenue, J. Greenfield, architect.

Tenders are wanted for the erection of a residence on Edmonton Street, Winnipeg, by Geo. Browne, architect. Bids to be in by the 10th inst.

Tenders addressed to the chairman, committee on works, Winnipeg, for the delivery of one street sweeping machine, will be received up to Tuesday, May 1.

Tenders addressed to the chairman of the committee on works, Winnipeg, for the supply of a quantity of sewer pipe, will be received up to 8.30 p. m., on Wednesday, April 11.

The Winnipeg Industrial Exhibition Association will advertise for tenders for four new horse stables to be erected at once. Tenders are also wanted for the erection of a new grand stand. Tenders are to be in by April 9.

The C. P. R. is calling for tenders for construction of masonry bridges at Cook's Creek, East Selkirk, abutments for 60 feet span; Strawberry Creek, Kaminitiquia, 25 feet arch culvert; Fish Creek, three miles west of Maple Creek, abutments for 60 feet span; Pipestone Creek, Laggan, pier and abutments for two 66 feet spans; near Murray Park, Southwestern branch, 25 feet arch culvert.

The Brandon Exhibition Association has issued a colored litho enjoining the friends of that institution to "bear in mind" that the show this year will be bigger and better than ever.

James B. Stephens is taking the management of the grain business of W. C. Graham at Winnipeg, while Graham is devoting his attention to the mail insurance business as manager of the Manitoba Mutual Mail Insurance Company.

There has been considerable talk lately about the probability of the United States securing a large share of the ocean and European coal trade which has heretofore been supplied from the British Isles. How the States could supply the coal if it did secure the orders is not apparent to the casual observer seeing that the mines of that country are at present unable to keep up with the home demand.

TO THE TRADE.

Our Brands

Are a guarantee of superior value. Customers know the rapid selling "Crescent" Black Dress Goods, "Seabelle" Black and Navy Serges, "Abergeldie" Costume Cloths, "Imperial" Velvetens and Hosiery, "Queen City" Cotton Goods, and all goods bearing our trade mark.

Filling Letter Orders a Specialty.

John Macdonald & Co.

Wellington and Front Sts. E.,
TORONTO, ONT.

RICE LEWIS & SON

LIMITED

ARTHUR B. LEE, President
A. BURDETT LEE, Vice-Pres. and Treas.

WHOLESALE

HARDWARE

BAR

IRON AND STEEL

Steam Pipe and Fittings
Sporting Goods



Write for Prices

TORONTO, - ONT.

S. GREENSHIELDS SON & Co.

MONTREAL.

Wholesale

DRY GOODS
MEN'S FURNISHINGS
CARPETS, Etc.

Winnipeg Sample Room:
412-414 McIntyre Block

Represented by:
R. R. GALLAGHER
G. M. NEWTON

D. R. DINGWALL

WHOLESALE

Jeweller

424 AND 584 MAIN STREET
WINNIPEG

Out of town merchants will find it advantageous to buy from us. Our prices are as close as can be obtained in Canada. A Trial Order Solicited. Write for prices

Hodgson, Sumner & Co.

IMPORTERS OF

DRY GOODS
MEN'S
FURNISHINGS

DOMESTIC
BRITISH
FRENCH
GERMAN
AMERICAN

Small Wares and Fancy Goods

347 and 349 ST. PAUL STREET, MONTREAL.
Represented in the West by

A. C. McLAUCHLAN, Queen's Hotel
WINNIPEG

RAW FURS

HIDES AND DEER SKINS

SHIP TO

McMILLAN FUR & WOOL CO.

EXPORTERS AND IMPORTERS.

200-212 FIRST AVE. NORTH, MINNEAPOLIS, MINN.

Write for Our Circular and See the Prices We Pay.

OUR Mr. W. G. FOWLER and Mr. Wm. J. COOPER will be on the road shortly with a full line of samples of the

CELEBRATED MALTESE CROSS AND LION BRANDS

FINE RUBBER FOOTWEAR

for fall trade. Wait until they call upon you with new lists and discounts before placing your orders. For fine finish, latest shapes, and durability, the Maltese Cross Brand leads all others.

The Winnipeg Rubber Co. Ltd., 350 Main St., Winnipeg, Man.

A. A. ANDREWS, MANAGER.

WESTERN SELLING AGENTS

Manitoba.

T. Hardman has opened a grocery store at Peqois.

Searry Bros. will open a butcher shop at Selkirk.

R. Ellwood is commencing business as a contractor at Cypress River.

J. Johnston has sold his blacksmith shop at Strathclair to Allport.

J. Brooks has sold his blacksmith shop at Forrest and moved to Brandon.

William Moore and Frank Smith, contractors, Neepawa, have dissolved partnership.

John Graham has bought the lumber ware business of W. J. Edwards at Cehre River.

Stewart Bros. have bought the implement business of Unger & Hogle, at Rosenfeld.

Seach & Sharp, lessees of the Grand Theatre, Winnipeg, have made an assignment to Malcolm Campbell.

It is reported that the Stobart block, Winnipeg, is to be remodelled this summer and another storey added.

Denley and Burrell are putting two new fishing snacks on Lake Winnipegosis for their operations of this year.

Vall & Robertson have bought out the butchering business of J. A. Kennedy at Wawanesa and will continue the same.

J. Y. Griffin & Co. have sold out their retail meat and produce business on St. Mary street, Winnipeg, to J. R. McNamara.

Work on the new Lac du Bonnet extension of the C. P. R. has been commenced, and grading will be finished about April 10.

The Manitoba Union Cement Co., of Winnipeg, announces its intention to put in a plant and commence operations this season.

J. A. Munro, of Boissovain, will shortly open a branch store in Minto where he will carry on a fruit, confectionery and meat business.

The Winnipeg city council is appointing a standing committee to deal with application for permission to erect new buildings.

The grocery store of J. B. Bell on Pacific avenue, Winnipeg, was damaged by fire on Tuesday to the amount of \$200. No insurance.

M. M. Keating has purchased H. V. Boot's interest in the lumber business at Ladiviere, Man. The firm name will be Rutherford & Keating.

T. A. Irvine & Co., plumbers, Winnipeg, have dissolved partnership. T. A. Irvine assumes the obligations of the firm and continues the business.

The stock, book debts and fixtures of Oliver & Byron, general merchants, Selkirk, lately assigned, will be sold by auction at Winnipeg, on April 17.

C. D. Bemrose has bought out his partner, E. F. Hutchings, in the harness business heretofore carried on by them at Neepawa, and will continue the business alone.

The Canada Motor and Cycle Company has opened a store at 184 Main street, Winnipeg, under the management of J. A. Gaynor, who is also the city agent for this company.

Ship carpenters have arrived at Lake Winnipegosis to put together a new steamer, which is being brought in from the east in sections. The boat will be 100 feet long, with accommodation for a number of passengers, and will be employed in the

fishing on the lake during the coming season for the A. Booth Co.

Fire broke out on Thursday morning in Gowallock's carriage show rooms at Cypress River. All the stock was burned. The loss is \$2,500. No insurance. Supposed to be incendiary.

The Selkirk Electric Company is asking the Manitoba government for a charter empowering it to construct and operate a line of railway and telegraph from Winnipeg to Selkirk.

The stock of general merchandise of Steen Bros., Roland, will be sold by auction by the assignees at Winnipeg, on the 11th inst. Together with the book accounts it is valued at \$10,500.

H. Holman, formerly in the restaurant business at Winnipeg, has purchased the cigar and tobacco stock of Jas. Watts & Co., Winnipeg, from the creditors, and will continue the business.

The Winnipeg fire, water and light committee has been asked to extend the city fire limits to cover both sides of Bannatyne and Market streets east from Main street to the transfer track.

The stock and book accounts of Mc Glashan & Waldon, Winnipeg, which consists of cutlery, plated ware, fancy china, rugs, pipes and fancy goods will be sold by auction on the 10th inst. The total value is \$2,109.67.

A delegation from the agricultural society of Portage la Prairie waited on the Manitoba government this week to ask for a grant towards the creation of a new central building on their fair grounds this year.

The Winnipeg police commissioners have awarded the tender for the policemen's summer clothing to the Hudson's Bay Co. The price per suit was \$14.90 for the ordinary serge, and \$20.25 for the dress uniform.

Donald Fraser & Co., wholesale clothing, Winnipeg, will hold a trade auction sale of their stock, commencing on April 17. The intention hereafter is to ship season orders mainly from their factory in Montreal, instead of carrying a large stock in Winnipeg.

The Canadian Pacific Railway Company have donated a series of cash prizes to be awarded at the Winnipeg Industrial exhibition next July for thoroughbred cattle, bred and raised in Manitoba or the Northwest Territories. There will be fifteen prizes in all.

Application is being made to the Manitoba legislature by the executors of the late W. W. Ogilvie, for an act to define the powers of the said executors, and for power to add to their numbers, also to authorize in corporation of the business as a joint stock company.

The past winter has been an active one in boatbuilding at Selkirk and as a result five steamboats are now ready for launching as soon as the river breaks up. Some of these are tugs, and one is a large boat for service on Lake Winnipeg. Besides this work a good deal of repairing has been done.

The examinations in the government dairy school at Winnipeg are now closed. The classes have been well attended and the results of the session are considered very satisfactory. In the cheese course there were ten pupils writing who finished in the following order: D. Iverach, Mrs. Alcock, Miss Lukier, C. J. Marcoux, T. T. Gadd, H. H. Bach, J. Racotto and M. Walker.

In the butter makers' course there were also ten participants, whose examination papers were graded in the following order: Messrs. T. T. Gadd, I. Gustafson, Statuton, Wheatland, Areibald, Lister, Walker, Ruddleck, Iverach and Gunn.

Assinibola.

J. Mundell has leased the Leland house at Wolseley, succeeding A. Elliott.

A branch of the Merchants Bank is to be established at Qu'Appelle Station.

Taylor & Motheral, general merchants, Weyburn, intend opening a branch at Yellow Grass.

The Medicine Hat council will advertise for tenders for the construction of a waterworks system in that town according to plans and specifications prepared by H. N. Ruttan, consulting engineer.

The Territorial legislature convened for its annual session on Friday, the 29th. The speech from the throne dwelt mostly on the financial situation, which is not at all satisfactory. The present grant from the Dominion parliament is apparently not sufficient for the growing needs of the Territories.

Alberta.

Brindle & Beatty have leased the Alberta hotel at Innisfail.

The stock and store building of Trimble Bros., Leduc, is offered for sale.

The Gallagher-Hull Co. have bought out N. LeClere's meat business at Edmonton.

The Gallagher-Hull Meat and Packing Company, have opened a branch at Strathcona.

Brodie & Stafford, hardware and furniture dealers, Lethbridge, have enlarged their premises.

H. L. Litka, general merchant, Strathcona, denies the statement that he has made an assignment.

Smith & Gaetz, general merchants, Red Deer, are adopting the strictly cash system in connection with their business.

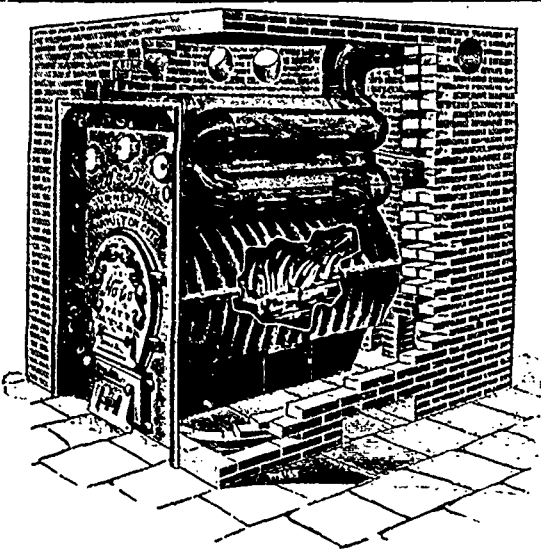
The Lethbridge Co-Operative Association has published a statement of its affairs for the six months ending January 31, which shows the business to be in good standing. The business carried on is general storekeeping.

Northwest Ontario.

James Dodds, general merchant, Norman, has assigned to H. Harvey, Rat Portage.

A delegation from Fort William has interviewed the Ontario government to secure ratification of the arrangements with the Ogilvie Milling Company and the Mattawan Iron Company by which these will establish plants in that town.

May pork sold as high as \$13.00 at Chicago last week and as a result of the manipulation which brought this about a local correspondent advises his clients to "look out for squalls." Trading in pork was very heavy, packers selling freely at the extreme figure. Lard was also strong and active, at a rise of about 32 1/2c per 100 pounds over the previous week. Short ribs sold 15c higher than the previous week.



FURNACES FURNACES

SEE our NEW IDEA FURNACES before making any contract with your local dealer. Write us for Furnace Catalogue, which will be sent you free.

Gurney Stove & Range Co.

WINNIPEG.

HIDES **WOOL**

SENECA ROOT **SHEEPPELTS**

NORTHWEST HIDE CO.

Herman Telke, Mgr.

230 KING ST.
WINNIPEG, MAN.

FUR **TALLOW**

THE CHESTER SEED CO.

Carry a full Stock of

AGRICULTURAL SEEDS

Can fill Mail Orders from the Trade promptly.

222 McDermott Ave., Winnipeg, Man.

NOTICE.

Notice is hereby given that application will be made to the Parliament of Canada, for an Act of Incorporation of "The Accident and Guarantee Company of Canada," for the purpose of carrying on a General Accident, including Sickness, and Guarantee Insurance Business.

JOHN F. MACKIE,
Solicitor for Applicant.

Montreal, Jan. 11, 1900.

Ottawa Fire Insurance Co. OF OTTAWA.

Authorized Capital - \$1,000,000

A. B. POWELL, General Manager. CHAS. MAGEE, President

JOHN W. LORD,
Agent for Manitoba and the Northwest.

ROOM 212 MCINTYRE BLK., WINNIPEG
P. O. Box 276.

Good live agents wanted in all principal centres.

For Rent.

Farm, in Winnipeg district; also two farms for sale. Apply D. W. Buchanan, office The Commercial, Winnipeg.

PABST



THE BEST
TONIC...

MALT EXTRACT

200 Dozen for sale by

The Bole Drug Co

Selling Agents, WINNIPEG, MAN.

Winnipeg Hardware and Metal Prices.

ANVILS—1'er lb., 10 to 12 1-2c; anvil and vice combined, each \$3 to \$4.50.
AUGERS—Post hole, Vaughan's, each, 85 to \$1.05.
AXES—Bench, 30 and 10 per cent; chopping axes, per dozen, \$7 to \$12; double bit, per dozen, \$12 to \$18.
BARNS—Crow, \$8 100 pounds.
BELLOWS—20, 24, \$4.50; 26, \$4.95; 28, \$5.40; 30, \$5.85; 32, \$6.30; 34, \$7.25; 36, \$8.10; 38, \$9; 40, \$10.35.
BELTING—Agricultural, 65 per cent; No. 1, 60 per cent; extra, 50 per cent. off new list.
BITS, AUGER—American, 50 per cent; Jennings' Excelsior, 45 per cent.
BLUESTONE—6 1 2c lb.
BOLTS—Carriage, 42 1 2 per cent; machine, 45 per cent; plow, 40 per cent; sleigh shoe, 65 per cent; stove, 65 per cent; tire, 55 per cent.
BUILDING PAPER—Anchor, Cyclone, and Jubilee, plain, 60c; Cyclone and Jubilee tarred, 75c; Anchor, tarred, 65c, Shield, tarred, 65c.
BUTTS—Cast, loose pin, com. 60 per cent; Peterboro', 33 1-3 per cent; wrought steel, narrow, 60 per cent, loose pin, 60 per cent; bronze, 45c up.
CALTRIDGES—Rim fire, Am. discount, 40 per cent; Dom. 50 and 5 per cent; per cent; centre fire, pistol, Am. discount 10 per cent; Dom. discount 30 per cent; military and sporting, Am. net list, Dom. 15 per cent.
CEMENT—Portland, barrel, \$4.25 to \$4.50.
CHAIN—Coil, proved, 3-16 in. per 100 lbs. \$11; do. 1-1 in. \$9.00; do. 5-16 in. \$6.50; 3-8 in. \$8.00; do. 7-16 in. \$5.75; do. 1-2 in. and up, \$5.50. Jack, iron, single per dozen yards, 15 to 75c; double, per dozen yards, 25c to \$1. Log, 6-16, \$8.50; 3-8, \$8.00. Trace, per dozen pairs, \$3.75 to \$5.50.
CHAINS—B. B. steel frame, 55 per cent. wood frame, 20 per cent less net.
COPPER—Tinned sheets, 28c; planished, 38c; boiler and R. K. pits, plain tinned, per lb., 29c; spun, 33c.
FILES—Com. 70 per cent; Nicholson's and Black Diamond, 60 per cent.
GLUE—Sheets, 15c lb.; broken, 12 1-2c, glue, white, for kalsomining, 18 to 25c.
GREASE, AXLE—Fraser's, per case, \$3.75; Diamond, light \$1.75 case, dark, \$1.75; Mica, \$3.00.
GRINDSTONES—\$1.50 100 lbs.
HAIR—Plasterers', 90c bale.
HARVEST TOLS—55 and 5 per cent.
HORSESHOES—Iron shoes, keg, 0 and 1, \$4.90; 2 and larger, \$4.65. Less than full kegs, 25c extra. Steel shoes, 0 and 1, \$5.20; 2 and larger, \$4.95.
HINGES—Heavy Tand strap, per 100 lbs., \$6.25 to \$7.20; light do., 30 per cent; screw hook and hinge, 6 to 10 in. 5c per lb.; 12 in. up, per lb., 4c.
IRON—Bar iron, 100 lbs., base price, \$3.10. Band iron, 100 lbs., \$3.40 base. Swedish iron, 100 lbs., \$5.00 base. Sheet, black, 16 to 20 gauge, \$3.50; 22 to 26 gauge, \$3.76; 28 gauge, \$4.00. Galvanized, American, 16 gauge, \$4.25; 18 to 22, \$4.50; 24 gauge, \$4.75; 26 gauge, \$5.00; 28 gauge, \$5.25 per 100 lbs; Queen's head, 25c advance on Am. prices. Canada plates, Garth and Blaua, \$4.00. Imitation Russian sheets 7 to 8c; genuine Russian sheets, lb. 12 to 13c.
LEAD—Pig, per lb. 6c; sheet, 6 1-2c.
NAILS—Cut—30d up, \$3.40; 20d, \$3.45; 10d, \$3.50; 8d, \$3.55; 6d, \$3.70; 4d, \$3.80; 3d, \$4.05; 2d, \$4.40. Wire nails, 4 1-2 in. up, \$4; 4 in., \$4.05; 3 in., \$4.10; 3 1-2 in., \$4.15; 2 in., \$4.30; 1 1-2 in., \$4.40; 1 1-4 in. \$4.65; 1 in., \$5. Horse nails, pointed, finished, oval heads, list price, No. 5, \$7.50 box; No. 6, \$6.75 box; No. 7, \$6 box; No. 8, \$5.75 box; Nos. 9, 10 and 11, \$5.50 box; discount on these prices, 40 per cent.
PICKS—Gray, \$7 doz.; pick mattocks, \$8 dozen.
PIPE—Iron, black, per 100 feet, 1-4 inch, \$3.82 1-2; 3-8, \$3.82 1-2; 1-2, \$4.72 1-2; 3-4, \$5.17 1-2; 1 inch, \$7.42 1-2; 1 1-4, \$9.90; 1 1-2, \$12.15; 2 inch, \$16.20; larger, 45 per cent. Galvanized, 1 1-4 inch, \$8.80; 3-8, \$8.80; 1-2, \$9.35; 3-2, \$10.45; 1 inch, \$14.30; 1 1-4 inch, \$19.80; 1 1-2 inch, \$24.20; 2 inch, \$32.45. Stove, 6 inch, \$9.25; 7 inch, \$10.00 per 100 lengths.
PITCH—Pine, \$4 per barrel.

PLASTER—Per barrel, \$3.25.
RIVETS AND BURS—Carriage, section 37 1-2 per cent; M rivets, black and tinned, 37 1-2 per cent; copper rivets and burs, 33 1-2c; cartons 1c per lb. extra net.
ROPE—Cotton, 1-4 to 1-2 inch, and larger, 15c lb.; deep sea, 16 1-2c; lath yarn, 11c; Manila, per lb., 16c base; sisal, 13 1-2c base.
SCREWS—F. H. bright, discount 75, 10 per cent, R. H. discount 70; F. H. brass, discount 70; R. H. brass, discount 60 and 5 per cent. Bench, wood, per doz., \$3.75 to \$4.50; bench, iron, per doz., \$4.50 to \$6; coach screws, 57 1-2 per cent.
SHELLS—Loaded—Eley's black, 12 gauge, per 100, soft, \$1.65, chilled, \$1.89; 10 gauge, soft \$2.15, chilled \$2.30; Eley's smokeless, 12 gauge soft \$2.10, chilled \$2.25; No. 10 gauge, soft \$2.00, chilled \$2.75.
SHOT—Soft, 6 1-4c per lb.; chilled, 6 3-4c; buckshot, 7 1-4c.
SOLDER—Half and half per lb., 23c; SOLDERING IRONS—Per lb. 32c.
SPADES AND SHOVELS—10 per cent.
STEEL—Sleigh shoe, \$3.60 base; spring \$4.25 base; machinery, \$4.25 base; share com. \$4.75 base; share, crucible, \$5.50; toe calk, \$4.25 base; tira steel, \$3.75 base; cast tool steel, lb. 9 to 12 1-2c.
STEEL BOILER PLATE—3-16 inch, \$4.25 1-4, 3-8 inch and thicker, \$4.00.
STAPLES—Galvanized, \$4.50 per 100 lbs.
TAR—Coal tar, per barrel, \$5.
TIN—Lamb and flags, 56 and 28 lb. ingots, per lb., 35c.
TIN PLATES—Charcoal plates, I. C. 10 x14, 12x12, and 14x20, \$5.75; I X same size box, \$6.75; I C, charcoal, 20 x28 11 1/2 sheets to box, \$11.00; I X box 20x28, 11 1/2 sheets, \$13.00.
TERNE PLATES—I. C. 20x28, \$10.50.
TINWARE—Plain, 75 and 2 1-2 per cent; retinned, 70 and 10 per cent.
TRAPS—Game, H. & N., No. 0, \$1.92 doz., No. 1, \$2.25; No. 1 1-2, \$3.38; No. 2, \$4.73; No. 3, \$6.30; No. 4, \$7.42; bear, No. 5, \$7.50.
TUBES—Boiler, 2 inch, 16 1 2c per foot; 2 1 2 inch, 21 1-2c; 3 inch, 23c per foot.
VICES—B. S. Wright's 14c; Sampson, 40-50 pounds, \$6.50 to \$7 each; parallel, \$2 to \$7 each.
WADS—Gray felt, 75c per lb.; thin card wads in boxes of 500 each, 12 and smaller gauge, 20c per lb.; thin card wads in boxes of 500 each, 10 gauge, 25c per lb., Chemically prepared black edge gray cloth wads, in boxes of 250 each, 11 and smaller gauges, 65c per 1,000; 9 and 10 gauges, 75c per 1,000; 7 and 8 gauges, \$1 per 1,000.
WIRE—Brass and copper wire, 20 per cent advance on the list; clothes line wire, 18 gauge, per 1,000 feet, \$3.50. Galvanized, 4 barb, regular, \$4.00; galvanized, plain twist, \$4.00.
ZINC—Sheet, in casks, \$9 per 100 lbs.; broken lots, \$9.50.

Winnipeg Prices Paints Oils, Glass, Etc.

ALABASTINE—Cases of 20 packages, \$6.50.
BENZINE—Case, \$3.50.
DRY COLORS—White lead, lb. 7 1-2c; red lead, kegs, 7c; yellow ochre in barrel lots, 2 1-2c, less than barrels 3c; golden ochre, barrels, 3 1-2c, less than barrels 4c; Venetian red, barrels 3c, less than barrels 3 1-2c; American vermilion, 15c English vermilion, \$1 per lb.; Canadian metallic oxides, barrel lots, 2 1-2c, less than barrel lots 3c; English purple oxides, in casks, 3 1-2c, less quantities 4c lb.
GASOLINE—Stove, per case, \$3.50.
GLASS—Single glass, first break, 16 to 25 united inches, \$2.50; 26 to 40, \$2.75 per 50 feet boxes; 41 to 50, \$6.00; 51 to 60, \$6.50; 61 to 70, \$7.00 per 100 feet boxes.
LINSEED OIL—Raw, Gal., 76c; boiled, gal., 79c in barrels; less than barrels, 5c gal extra, with additional charges for cans and cases.
OILS—Black oils, 25 to 30c gal.; clear machine oil, 30 to 33c; cylinder oil 53 to 78c, as to quality; castor oil, 11c per lb.; tanners' or harness oil, 65c; neatfoot oil, \$1; steam refined oil, 85c; pure winter bleached sperm oil, \$2.00 gal.
PREPARED PAINTS—Pure liquid col-

ors, gallon, \$1.10 to \$1.90, as to shade and quality;
PUMPKY—In kegs, barrel lots, 2 1-2c lb.; in 100 lb. bags, 2 3-4c; do. less than barrels, 3c lb.
REFINED PETROLEUM—Silver Star, 20 1-2c; Oleophene, 23 1-4c; Sunlight, 24c; and Eocene, 27c per gallon.
TURPENTINE—Pure spirits in barrels, 90c; less than barrels, 53c per gallon. An additional charge for packages for small quantities.
VARNISHES—No. 1 furniture, per gallon, \$1; extra furniture, \$1.35; pale oak, \$1.50; elastic oak, \$1.75; No. 1 carriage, \$1.50 to \$1.75; hard oil finish, \$1.50; to \$2; brown Japan, \$1; house painters' gold size Japan, \$1.70; coach painters' do., \$2 to \$2.25; No. 1 brown shellac, \$2.25; pure orange shellac, \$2.50.
WHITE LEAD—Pure, \$7.50 per 100 lbs.; No. 1, \$7.25.
WHITING—\$1.25 per 100 lbs. gross weight.

Winnipeg Lumber Prices.

Following are wholesale prices, delivered at Winnipeg, for pine lumber:
TIMBER AND DIMENSION—Timber, 4x10 and 12, 6x10 and 12 and 8x8 to 12x12, 12, 14 and 16 feet long, \$19.50, timber, 6x8 to 6x8, 4x4 to 4x8 and 3x6 to 3x12, 12, 14 and 16 feet long, \$18; dimensions, 2x4 to 2x12, 12, 14 and 16 feet long, \$17.00; dimensions, 2x4, 10 feet long, \$17.50; dimensions 2x8 to 2x12, 10 feet long, \$17.00; dimensions, 2x6, 10 feet long, \$17.00; dimensions, 2x4, 10 2x12, 6 and 8 feet long, \$14.00; cull plank all widths \$14.50; cull plank, re-sawn, \$11.50. \$1 per M. advance on each inch over 1 1/2 in. in depth and width. \$1 per M advance on each 2 feet over 16 feet.
BOARDS—First common boards, red pine, 10 to 18 feet, \$22.50; second common, 10 to 18 feet, \$17.60, third common, 10 to 18 feet, \$17.00; culls, 10 to 18 feet, \$15.00; 1-2 inch sheathing S. I. S., 10 to 18 feet, \$13.50; second common stock, 12 in., 10 to 18 feet, \$19; second common stock, 8 to 10 in., 10 to 18 feet, \$18; No. 1 wide box boards, 10 to 18 feet, \$27.50, No. 2 wide box boards, 10 to 18 feet, \$20, \$2 per M less for 6 and 8 feet. Re-sawing boards \$1 per M extra.
SHIPLAP—Shiplap, 8 and 10 in., \$18.50; shiplap, 6 in., \$17.50; shiplap, culls, 8 and 10 in., \$16; culls, 6 in., \$13. \$2 per M less for 8 feet and under.
FLOORING, SIDING AND CEILING—Flooring and siding, 8 and 10 in., \$19.50; flooring and siding, 8 and 10 in. culls, \$16; flooring, siding and ceiling, 4, 5 and 6 in., first white pine, \$35.50; do. second white pine, \$31.50; do. third white pine, \$24.50; do., 5 and 6 in., first and second red pine, \$27; do., 4 in first and second red pine, \$25.50; do., 5 and 6 in., third red pine, \$22; do., 4 in third red pine, \$21; do., 5 and 6 in. fourth red and white pine, \$19; do., 4 in. fourth red and white pine, \$17; do., 4, 5 and 6 in culls, \$15. \$2 per M less for 8 feet and under. \$1 per M. advance for dressing two sides 1 1-4 and 1 1-2 in. flooring \$1 per M advance over 1 in. Bevel siding, No. 1, 1-2 in. x 6 in, \$21; bevel siding No. 2, 1-2 in. x 6 in, \$18.
FINISHING—1 1-4, 1 1-2 and 2 in. first, second and third clear white pine, \$45; do., select white pine \$35; do, shop, \$30. \$5 per M advance on 2 1-2 in and thicker. 4 1-4, 1 1-2 and 2 in clear red pine, \$31; do. select red pine, \$26.50; 1 1/2 in first and second clear white pine, \$47.50; do third, clear white pine \$36.50; do. B. select white pine, \$30; do. C select white pine \$25; No. 1 stock white pine, 12 in, \$41.50; do. 8 and 10 in., \$39.50; No. 2 stock white pine, 12 in, \$36.50; do., 8 and 10 in., \$34.50; No. 3 white and red pine, 12 in., clear red pine, \$27.50; 1 in. clear red pine, \$31; do., select, \$26. Selected widths, \$2 per M extra.
MOULDINGS—Parting strips, per 100 lineal feet, 40c window stops, do., 50c; door stops, do., 75c. quarter round and cove, do., 50c; 4 in. casing, do., \$1.00; 6 in casing, do., \$2; 6 in casing, do., \$2.40; 8 in base, do., \$3.25; 10 in. base, do., \$4. All other mouldings 50 per cent discount off universal moulding list. Latb, per M, \$3.50. pine shingles, 6 in. clear butts, per M, \$1.75;

LEADING COMMERCIAL HOTELS**WINNIPEG.****HOTEL LELAND**

Headquarters for Commercial Men
City Hall Square.

RAT PORTAGE.**HILLIARD HOUSE**

LOUIS HILLIARD, Prop.
First-class accommodation for Commercial Men

SELKIRK.**CANADA PACIFIC HOTEL**

Best accommodation for Commercial Travellers

J. H. MONTGOMERY, Prop.

TREHERNE.**LELAND HOTEL**

G. F. McBAIN, Prop.
First class accommodation for Commercial Travellers, etc.

CRYSTAL CITY**THE MANITOBA HOTEL.**

SMITH BROS., Props.
Refitted and refurbished throughout. Commodious Sample Rooms. Everything first-class.

HOLMFIELD**MANSION HOUSE.**

W. J. AWDE, Prop.
Accommodation First-Class in every respect.

BOISSEvain**RYAN HOUSE**

Every accommodation for commercial travellers and the general public.
W. H. SAULTS, Prop.

MACGREGOR, MAN.**THE STANLEY HOUSE**

E. WATSON, Prop.
First-class accommodation for travellers. Commodious sample rooms. Livery and feed stable in connection. All kinds of teaming attended to.

OAK LAKE.**HOTEL MANITOBA**

GEO. WRIGHT, Prop.
Newly remodelled and heated by hot air. Commercial headquarters. First-class Sample Rooms.

VIRDEN.**BALMORAL HOTEL**

ALEX. PATTERSON, Prop.
Headquarters for Commercial Men.

ELKHORN.**HOTEL MANITOBA**

W. J. DIXON, Prop.
New Building. New Furnishings. Furnace Heating. Acetylene Gas. First-class. Large Sample Rooms.

FLEMING.**WINDSOR HOTEL**

W. GEO. CLEVERLY, Prop.
New Management. Rates \$1.25. Renovated and Refurnished. Commodious Sample Rooms. Heated by Hot Air. Livery and Feed Stable in connection. Inside Closet.

WAPPELLA**HOTEL MUNDELL**

STUART MUNDELL, Prop.
Good sample rooms. Hot air furnace heating

WHITEWOOD**WOODBINE HOTEL**

R. MAY, Prop.
First-class accommodation for travelling public. Good sample rooms.

REGINA**WINDSOR HOTEL**

D. D. McLEOD, Prop.
All modern improvements. Steam heating, etc. Good sample rooms. Rates \$1.50 to \$2.50 per day.

MOOSE JAW**THE MAPLE LEAF HOTEL**

EDW. C. MATHEWS, Prop.
First class cuisine. The newest and best equipped hotel in the West. Heated by steam. Lighted with Acetylene Gas. Hot and cold baths.

MEDICINE HAT**ASSINIBOIA HOTEL**

H. H. ROSS, Prop.
Commercial headquarters. Commodious sample rooms. Newly furnished bath rooms. Rates \$2.50 per day.

STRATHCONA**HOTEL EDMONTON**

W. H. SHEPPARD, Prop.
First Class. Opposite Depot.

EDMONT.**ALBERTA HOTEL**

JACKSON & GRIERSON, Proprietors.
Sample rooms. Free bus. Livery in connection.

MACLEOD**MACLEOD HOTEL**

R. S. IRWIN, Prop.
Good sample rooms and every accommodation for commercial travellers and the general public. Rates \$2.00 per day. Bus to and from all trains.

PINCHER CREEK**BRICK HOTEL**

MITCHELL & DOBBIE, Proprietors.
First-Class in every respect. Good accommodation for commercial men.

CRANBROOK, B. C.**CRANBROOK HOTEL**

JAS. RYAN, Prop.
Large and convenient sample rooms and good accommodation for commercial men. Rates \$2 a day.

FORT STEELE, B. C.**HOTEL WINDSOR**

Headquarters for commercial and mining men. All modern conveniences. Large sample rooms for commercial men.

MOYIE, B. C.**THE CENTRAL HOTEL**

DESAULNIER & BATLEY, Props.
Headquarters for commercial and mining men. Sample rooms. Rates \$2 per day.

KASLO, B. C.**THE KASLO HOTEL**

COCKLE & PAPWORTH
Free sample rooms. First-class in every respect. All modern conveniences.

SLOCAN CITY, B. C.**THE ARLINGTON HOTEL**

GETHING & HENDERSON, Props.
Free sample room.

REVELSTOKE, B. C.**HOTEL VICTORIA**

JOHN V. PERKS, Prop.

Large and well lighted sample rooms. Hot air and electric bells and light in every room. Night Grill Room in connection for the convenience of guests arriving and departing by night trains.

The John L. Cassidy Co

LIMITED

339 and 341 St. Paul St., MONTREAL

Importers of **China, Glass and Earthenware, Etc., Etc.**

Communications addressed to A. C. Beach, their western representative, at the Leland House Winnipeg, or to Geo. L. Mitchell, local representative for Manitoba, at 312 McDermot Street Winnipeg, will receive prompt attention.

C. R. King, Victoria, is our local representative or British Columbia

A. BURRITT & CO.

Dominion Mills

MITCHELL, ONT.

Manufacturers of

HOSIERY, MITTS, TUQUES

LADIES', MISSES' AND CHILDREN'S KNITTED UNDERWEAR, ETC. . . .

Dealers seeking merchandise that will SECURE that will HOLD and that will INCREASE THEIR TRADE in these lines should not fail to stock the Dominion Brand.

The Underwear is manufactured with the latest up to date machinery, and is unsurpassed in quality, fit and finish.

In ordering from these Mills you will get goods second to none in the trade.

YOU WILL GET STOCK EQUAL TO SAMPLES.

You will get the QUALITIES, the QUANTITIES and the SIZES ordered in each line.

You will get FAIR PRICES, PROMPT DELIVERY, liberal terms and honorable treatment.

I will call on the trade on C. P. R. in Manitoba, also in N. W. T., and B. C., and branch lines in good time for fall trade. Mr. D. Cameron will do the branch lines in Manitoba.

J. RANTON,

Agent, P.O. Box 623.

Sample Rooms, 502 McIntyre Blk., Winnipeg.

WINNIPEG PRICES CURRENT

GROCERIES

Prices to retail dealers for ordinary lot, with usual discounts for cash or large lots.

Table listing various grocery items such as Apples, Beans, Corn, Peas, Pears, Pineapple, Pumpkins, Raspberries, Strawberries, Tomatoes, Salmon, Sardines, and Imported Fresh Herring.

Table listing various grocery items such as Canned Meats (Corn Beef, Lunch Beef, etc.), Chicken, Ham, Potted Tongue, and Coffee.

Table listing various grocery items such as Cereals (Split Peas, Pot Barley, etc.), Cigarettes (Old Judge, Athlete, etc.), and Cured Fish (Boneless Hake, Codfish, etc.).

Table listing various grocery items such as Dried Fruits (Raisins, Loose Muscatels, etc.), Nuts (Brazil, Taraxona Almonds, etc.), and Syrup (Extra Bright, Medium, etc.).

Table listing various grocery items such as Spices (Allspice, Cassia, Cloves, etc.), China Blacks (Choice, Medium, etc.), and Indian and Ceylon products.

Table listing various grocery items such as Young Hysons (Choice, Medium, etc.) and Japan products (Finest May Picking, etc.).

Table listing various grocery items such as Raisins, Selected off stalk, Raisins, Vnl. Layers, Clusters, and Loos Muscatels.

Table listing various grocery items such as California Evaporated Fruits (Peaches, Apples, Apricots, etc.) and Matchos (Telephone, Telephone, etc.).

Table listing various grocery items such as Nuts (Brazil, Taraxona Almonds, etc.) and Syrup (Extra Bright, Medium, etc.).

Dried Fruits

Table listing various dried fruit items such as Raisins, Loos Muscatels, London Layers, Apples, Evap Apples, and California Evaporated Fruits.

Matchos

Table listing various match items such as Telephone, Telephone, Tiger, and Parlor Matches.

Nuts

Table listing various nut items such as Brazil, Taraxona Almonds, Peanut, Roasted, Peanut, Green, and French Walnuts.

Syrup

Table listing various syrup items such as Extra Bright, Medium, Maple, and Molasses.

Sugar

Table listing various sugar items such as Extra Standard Gran, German Granulated, Extra Ground, Powdered, Lums, and Bright Yellow Sugar.

Salt

Table listing various salt items such as Common, fine, Common, coarse, Dairy, and Dairy, 60-5.

Spices

Table listing various spice items such as As-sorted Herbs, Allspice, Cassia, Cloves, Pepper, and Nutmegs.

China Blacks

Table listing various China Black items such as Choice, Medium, and Common.

Indian and Ceylon

Table listing various Indian and Ceylon items such as Choice, Medium, and Common.

Young Hysons

Table listing various Young Hyson items such as Choice, Medium, and Common.

Japan

Table listing various Japan items such as Finest May Picking, Choice, Fine, and Good Medium.

Tobacco

Table listing various tobacco items such as T. & B., Lily, Crescent, T. & B. Black Cheving, T. & B. Mahogany Cheving, T. & B. 1-12 pkg, cut, T. & B. in pouches, T. & B. in 1-5 tins, T. & B. in 1/2 tins, T. & B. in 1/4 tins, Orinoco, 1-12 pkg, Orinoco, 1-5 tins, Orinoco, 1/2 tins, Tucketts Cherub Cigarette, Brier, 8s, cads, Derby, 3s and 4s, cads, Derby, 8s, cads, P. & W. Cheving, Cads, P. & W. Cheving, Butts, Tonka, 1/2 tins, Tonka, 1-12 pkg, Canadian Leaf, 50 lb bales, very bright, Lower grades.

Dominion Tobacco Co.'s List

Table listing various tobacco items such as BRIGHT CHEWING PLUG, Pommy, 3/4 lb. Bars, Sm. ex, 3/4 lb. Bars, Holly, 3 s., Holly, 8 s., and BLACK CHEWING PLUG.

Table listing various tobacco items such as Black Bass, Navy, 1/2 lb. Bars, Black Bass, Navy, 4 s., Black Bass, Navy, 8 s., and Black Bass, Navy, 12 s.

BRIGHT SMOKING PLUG

Table listing various tobacco items such as Virgin Gold, 4 s., Marigold, 8 s., Monarch, 3 1/2 s., and Clover, Double Thick, 8 s.

Empire Tobacco Co.'s List

Table listing various tobacco items such as SMOKING, Empire, 3s @ 4 1/2, Golden Plug, 3s, Royal Oak, 8s, and Something Good.

CHEWING

Table listing various tobacco items such as Currency Bars, 10 1/2 s., Currency, 6 s., Free Trade, 8 s., and Snowshoe, Bars, 12 s.

WOODEN WARE

Table listing various wooden ware items such as Pails, 2 hoop clear, Pails, wire hoop, Pails, Star fibre, Tubs, No. 0 common, Tubs, No. 1 common, Tubs, No. 2 common, Tubs, No. 3 common, Tubs, nests (3), Tubs, wire hoop (3), Tubs, fibre, No. 0, Tubs, fibre, No. 1, Tubs, fibre, No. 2, Tubs, fibre, No. 3, Tubs, fibre, (3), Butter Tubs, wire hoop (2), Butter Tubs, wire hoop (3), Washboards, Globe, per doz., and Perfection, p. doz.

CURED MEATS, ETC.

Table listing various cured meat items such as Lard, pure leaf, steam rend., Lard, pure, in 3, 5 and 10 lb. tins, Lard, pure, Tierces, per lb., Lard, 50lb tubs, Lard, Compound, 20 lb pails, Lard, Compound, 3 and 5 lb. tins, case 60 lbs., and Smoked Meats.

Dry Salt Meats

Table listing various dry salt meat items such as Long clear bacon, Shoulders, Short Clear, and Backs.

Meat Sundries

Table listing various meat sundry items such as Fresh pork sausage, Bologna sausage, Pickled pigs feet, and Sausage casings.

DRUGS

Following are prices for parcel lots with usual reductions for unbroken packages.

Table listing various drug items such as Alum, Alcohol, Bleaching Powder, Bluestone, Borax, Bromide Potash, Camphor, Camphor, ounces, Carbolic Acid, Castor Oil, Chlorate Potash, Citric Acid, Copperas, Cocaine, Cream Tartar, Cloves, Epsom Salts, Extract Logwood, Extract Logwood, boxes, Formalin, per lb, German Quinine, Glycerine, lb, Ginger, Jamaica, Ginger, African, Howard's Quinine, Iodine, Insect Powder, Morphia, sul., Opium, Oil, Olive, Pure, Oil, U.S. Salad, Oil, lemon, super, Oil, peppermint, Oil, cod liver, gal., Oxalic Acid, Potass Iodide, Paris Green, Saltpetre, Sal Rochelle, Shellac, Sulphur Flowers, Sulphur Roll, keg, Soda Bicarb, keg of 112 lbs., Sal Soda, Tartaric Acid, and Strychnine.

LEATHER

Table listing various leather items such as Harness, oak, Harness, union oak No. 1, Harness, union oak No. 1 R, Harness, hemlock No. 1, anchor brand, Harness, hemlock No. 1 R, anchor brand, Harness, hemlock country tannage, No. 1 R, Russet collar leather, per foot, American Oak Sole, Sole, union oak, Listowell, sole, Penetang, sole, Acton Sole, B. F. French calf, B. F. French kip, Canada calf, Canada Calf, Niagara, Niagara Brand Kip, Wax upper, Grain upper per foot, Kangaroo, per foot, Dolgona, per foot, Dolgona, bright, and Bag sheepskins.

FUEL

Coal

Table listing various fuel items such as These are retail prices, delivered to consumers in the city, or 50c per ton less at the yards, except western anthracite nut size, which is 40c less at the yards, Pennsylvania anthracite, Stove, nut or lump, Pea size, Canadian anthracite, stove, Canadian anthracite, nut, Lethbridge bituminous, Crow's Nest bituminous, U. S. bituminous, Souris Lignite, Souris, car lots F.O.B. mines, and Hossburg Smithing.

Cordwood

Table listing various cordwood items such as These are prices for car lots, on track Winnipeg, Tamarac, Pine, Spruce, Poplar, green or dead, cut, Manitoba Oak, Birch, Minnesota Hard Maple, and Minnesota Oak.

TO INSURE

PERFECT SATISFACTION to your Customers, buy the old reliable line of RUBBER SHOES. Best Wearers offered to the Trade.

Our Novelties this season are

ARMOR PROOF DUCK BOOTS

N. B.—Travellers will call on you shortly.



Canadian Rubber Company

OF MONTREAL

W. ANTLIFF, Manager Winnipeg Branch

IN STOCK IN MONTREAL

LYSAGHT'S GALVANIZED POULTRY NETTING

Sanderson's
Cast Steel For Tools

Henry Wright
& Co.'s
Anvils and Vices

A. C. LESLIE & CO., MONTREAL

P. O. Box 948

TELEPHONE 983

NORTH-WEST PROVISION CO.

WHOLESALE PRODUCE AND
COMMISSION MERCHANTS,

Send us your Butter, Eggs and other Produce We return the highest market prices and charge 5 per cent. commission only. Cash on 1st and 15th of each month. Cold storage on premises.

Can supply you with Dairy Requisites, Green and Dried Fruits, Canned Goods, Cured Meats, Groceries, etc., at lowest prices. Send us a trial shipment and order.

128 and 130 Princess St., WINNIPEG

RAT PORTAGE LUMBER COMPANY LIMITED

Manufacturers of

LUMBER, LATH, SHINGLES

SASH, DOORS and all kinds of **WOODWORK**

Head Office and Mills at Rat Portage, Ont.

Branch, Point Douglas Ave., Winnipeg

THE BUSINESS SITUATION

Saturday, April 7.

The weather has been quite summer-like this week and spring business is moving freely. Wholesale trade keeps moderately active and retail trade in the city is brisk in all reasonable lines. Prices continue to advance and it is generally believed that this year will pass without seeing any important reactions. Makers are all sold so far ahead on leading staple lines that there is not much room for a decline. Money continues scarce and April payments were as a rule poorly met. Bank clearings show an expansion over a year ago of \$221,269. Bank interest rates hold firm at 6 to 8 per cent according to name. Mortgage rates are 6 to 8 per cent for city and farm property. There is a good demand for money.

WINNIPEG MARKETS

Saturday, April 7.

(All quotations, unless otherwise specified, are wholesale for such quantities as are usually taken by retail dealers, and are subject to the usual reduction on large quantities and to cash discounts.)

BUILDING MATERIAL.

Orders for stone and lime are becoming more numerous and the prospects are for an active spring trade. Quotations for stone are: Stonewall rubble, \$5.50 per cord; Stonewall footing \$5.50 per cord; Stony Mountain rubble, \$4.00 per cord. White lime is worth 20c per bushel, and grey lime 16c per bushel.

DRY GOODS.

Winnipeg jobbing houses have had numerous advances this week of advances in the price of staple cottons such as ducks, sheetings, grey cotton, etc. These amount to from 1c to 1 1/2c per yard. Mills claim that on a basis of present quotations for raw cotton, labor, etc., these advances are absolutely necessary. They mean that when present stocks bought at old prices are exhausted higher values will prevail here. Buyers at present in the old country looking for fall and winter lines find extreme difficulty in placing orders, and prices for imported goods are sure to be very high next fall.

GREEN FRUITS.

The season for navel oranges is about over. Med. sweets are taking the place of these. Jobbers have been obliged owing to the warm weather to have all California oranges brought in under refrigeration, which cost 30c per box. They have accordingly advanced the price of fancy navels to \$1.50 per case and of fancy seedlings to \$3.75 per case to take effect on Monday, the 9th. The first carlot of Mediterranean sweets is to arrive next week and will sell at \$4.00 per case. Bananas have been scarce and 25c higher. Lemons are plentiful and show good quality. Apples are getting scarce. We quote: California navel oranges, \$1.50 per case for regular sizes. California seedlings, \$3.75; fancy Med. sweets, \$4.00; California lemons, per box, \$4.75; bananas, \$3.25 to \$3.50; California grape fruit, \$5 per case; apples, winter, \$4 to \$5.00 per barrel; Cape Cod cranberries per barrel, \$3.00; coconuts, per dozen, 50c; Greno'le walnuts, 15c; Tarragona almonds, 15c; Illberts, 12c;

peanuts, green, 9c, roasted 12c; pecan nuts 15c per pound; maple sugar, per pound 11c, apple cider, 35c per gallon in barrels and half barrels; fruit cider put up in 20 and 30 gallon kegs, per gallon, 40c; California layer figs in 1c pound boxes, \$1.40; new Smyrna in glove boxes, \$2.00 per dozen; 10 lb. boxes, \$1.50 per box; dates, 7c per lb. in 1 lb cartons, 10c; honey in 1-lb. glass jars, per dozen jars, \$2.50; American red onions, 3c per lb.; jam, in 7 lb. pails, per dozen, \$6.50; lettuce, per dozen bunches, 50c; radish per dozen bunches, 50c.

GROCERIES.

Canned goods maintain their strength. Local jobbers are selling these goods too cheap as they cannot be replaced at the prices now asked. Raspberries and strawberries are particular instances of this. Green Rio coffee remains strong and stocks in the city are apparently light. The outlook is that present prices of 10 1/2 and 11 1/2c will be maintained. Corn meal has advanced about 10c per sack and the jobbing price is now \$1.25 for sacks and 65c for half sacks. Sugars maintain their position of a week ago. The movement of groceries is good for the season but jobbing houses find collections very bad.

HARDWARE.

There are no new features this week. Prices are firm under an active spring demand.

LUMBER.

There is a large demand for all kinds of lumber for building purposes and jobbing concerns cannot take care of all the orders they receive. It might be well to say that mills are sold two months ahead on British Columbia cedar lath.

PAINTS, OILS AND GLASS.

Prices remain unchanged from a week ago though the market is extremely firm. White lead is being sold here at a price 13c below what it could be laid down for from Montreal. Glass is very firm and so also is gine. The latter commodity is also being sold here at less than it would cost to lay it down. Varnishes manifest great strength and may go higher.

RUBBER FOOTWEAR.

The new rubber footwear list and terms were made public promptly on April 1, as expected. There has been a considerable advance in the new list price of solid rubber goods, as compared with the old list, amounting to 7 1/2 to 12 1/2 per cent. On cloth top lines the change in the list is not so great. On some lines there is practically no change, and on others an advance of 5 per cent or more.

The main feature of the list is the change in discounts and terms. Last season the trade discount was 15 and 2 1/2 per cent., with 4 per cent off for thirty days and 5 per cent off for ten days. This season the discount has been increased to 25 per cent. with a 4 per cent. off for thirty days and 5 per cent. off for payment in ten days. A further discount of 1 per cent. will be given on fall orders placed before July 1.

The effect of these changes in discounts will be to place the retail trade in a much better position than heretofore, in handling rubber footwear. The margin of profit on rubber goods has been too small to allow the retailer a reasonable profit. Retailers will now be able to make a better profit and still sell at the list prices. Part cloth goods, it will be observed, will cost the retailer less money than last season, as the increase in the discount

is much greater than the increase in the list prices. Some solid rubber line will cost a little more. Retailers who have the old and new lists will be able to compare prices and discounts, and figure out comparative prices of each line. On an average order the cost will not vary very much from former prices.

There is also a change this year in the bonus allowed for quantities. Last season a bonus of 1 per cent. was allowed on purchases of \$2,000 or over. This year the bonus will vary from 2 per cent. on \$1,000 up to 7 1/2 per cent. on purchases of \$5,000 and over.

All Winnipeg jobbers have agreed to adhere strictly to the new list and terms.

Some rubber men are of the opinion that prices will be increased before the season is over. In fact it has been hinted that there may be a reduction of the discounts, but this remains to be seen.

SCRAP.

The scrap situation here presents no new features. Dealers are looking forward to an active trade later on when spring collections begin to come in. The formation of a scrap rubber association at Boston has been watched with some interest by the local trade, as the new concern was expected to take some action with regard to prices. So far, however, no change has been made. Old metals have advanced 1-4c at Boston. We quote prices here as follows: Quotations f. o. b. Winnipeg are: No. 1 cast iron free from wrought and malleable \$14 per ton; No. 2, \$7 per ton; wrought iron scrap, \$6.50 per ton; heavy copper, 10c per pound; red brass \$ to \$1.2c per pound; yellow brass; heavy, 7 1/2c per pound; light brass, 4 1/2 to 5c per pound; lead pipe or tea lead, 2 1/2c per pound; zinc scrap, 3c per pound; rags, country mixed, 50c; rubber, free from rivets, buckles and articles, 3c per pound; white ledger paper 1c lb.

GRAIN AND PRODUCE.

WHEAT—The renewal of activity in the wheat market noticed in last week's review has continued to a moderate extent over the past week, but cannot be said to have increased. There was a gradually advancing movement in prices up to the middle of this week, culminating on Wednesday, when the advance had been secured over a week ago, but the last two days the advance has been lost again, and at the close of yesterday's market prices were found to be 1-8c lower than a week ago. While this is so, it would seem as if it were merely the workings of the speculative market, because previous to the last few days the daily news and information regarding the movement of wheat, the demand for it, and the prospects for coming crops, have been distinctly bearish in their nature, and in face of that, markets have held up and even advanced a little. Within the last few days the daily reports furnished to the trade are of a less bearish color and the market declines. Recently there seems freer admission of extensive damage to winter wheat in the important states of Ohio, Indiana and Michigan and a less confident tone as regards the prospects for the crop in parts of the contiguous states. The state report for Ohio recently issued gives the condition in that state as only 46 compared to 56 on April 1 last year. The United States government crop report for March will be issued

MAPLE LEAF RUBBERS AGAIN TO THE FRONT

WE have pleasure in saying we are again prepared to supply MAPLE LEAF RUBBERS. New building; new plant; new designs, and the best goods to wear on the market. Our travellers are now out with Samples. We guarantee prices to be as low as you can get any place. Output 100,000 pairs daily.

THE KILGOUR-RIMER CO. Ltd. SOLE AGENTS
WINNIPEG
AND MANITOBA

WAIT UNTIL YOU SEE SAMPLES

In Shipping to B.C.

You want a house that can tell you where to ship to best advantage. We have the combination. Write Vancouver or Nelson. Houses also at Victoria and Revelstoke.

F. R. STEWART & CO.

on April 10 and will give the comparative condition of the winter wheat crop of the States as at the end of that month, and it is expected that this report will have perhaps important influence on prices, according as it may be interpreted bullish or bearish. European markets have held firm during the past week and show fair strength. European crop prospects while apparently fair as a whole are not sufficiently favorable to discourage holders of wheat, and the tugboat of immense Argentine shipments is broken this week by the comparatively small clearances for the week of 1,600,000 bushels, after 3,523,000 bushels for last week, and over 4,000,000 bushels the week previous. Should Argentine exports to Europe continue on a moderate scale, Europe will have to depend more on North America for needed supply and with firmness on this side enhancement in price may easily follow. Another increase has to be noted in the American visible supply, being 111,000 bushels last week, against an increase of 182,000 bushels previous week, and a decrease of 80,000 bushels a year ago. The world's shipments were 7,654,000 bushels, compared to 8,381,000 bushels previous week and 6,569,000 bushels a year ago. The world's visible supply, according to Bradstreet's, decreased 1,850,000 bushels, compared to a decrease previous week of 765,000 bushels and an increase last year of 52,000 bushels.

There is not much to report about the local market. It follows the ups and downs of the Chicago market as to price. When markets decline buyers are scarce, and when advancing buyers are free and keen to buy. Sellers show no anxiety to sell, but sev-

era: parcels change hands whenever market has advanced a little. The price of 1 hard spot Fort William has ranged from 67 to 68 1-2c, the latter price having been paid for a little on Wednesday when market was at the highest point. Since then the price has declined to 67 1-4c, at which it closed yesterday. For May delivery 70c was paid for some 1 hard on Wednesday, but yesterday 68 1-4c was best bid. 2 hard and 1 northern are 21-2c under 1 hard, and 3 hard 5c under 1 hard. 1 frosted 58c, and 2 frosted 53c, all in store Fort William, spot delivery.

FLOUR—We quote: Oglvie's Hungarian patent, \$1.85; Glenora patent, \$1.65; Manitoba Strong Bakers, \$1.40; XXXX, \$1.05. Lake of the Woods patent, \$1.85; Strong Bakers, \$1.65; Medora, \$1.40, XXXX, \$1.20 per sack of 98 pounds, delivered in Winnipeg.

MILLEED—Stocks are very light and not equal to the demand. Prices are: Bran, \$14.50, and shorts, \$15.50.

GROUND FEED—Oat chop is worth 52c per ton; barley chop, \$17; and mixed feed of barley and oats, \$20 per ton. Corn chop, \$18; oilcake, \$27.

OATS—Prices are easier on a lighter demand. No. 2 white oats are worth in carlots Winnipeg 31c per bushel, and No. 2 mixed 30 to 30 1-2c. At country points No. 2 mixed are worth 25 1-2c middle freights.

BARLEY—Offerings are very light. 56c per bushel is being quoted for carlots on track here of No. 1 barley.

CORN—Corn advanced sharply this week and is now worth 49c per bushel in carlots on track here.

WHEAT—Buyers are paying farmers 54c per bushel at 15c freight rate points.

FLANSEED—No movement. Worth \$1.25 per bushel to farmers.

OATMEAL—Manitoba meal is being offered at \$1.65 per 80 lb. sack to the retail trade by millers.

HAY—The market is very dull. Fresh baled hay is worth \$5 to \$5.50 per ton; loose hay on the street, \$3 to \$4.

BUTTER—No creamery butter has yet been offered in a jobbing way, but it is expected that some of the factories will have butter to sell next week. In the absence of business values are purely nominal.

BUTTER—Dairy — Butter is more plentiful this week but choice grades are still scarce. Prices have declined somewhat on the larger receipts. We quote: Finest dairy, in tubs, 16 to 18c per pound; dairy prints, 18c, rolls 18c; second grades 10 to 14c; commission and freight off all these prices. Owing to the warm weather jobbers are not able to handle prints and rolls to advantage. Butter should now be packed in tubs or boxes.

CHEESE—Stocks are low and the market firm. Small sizes are worth 14 to 14 1-2c per pound and large 14c.

EGGS—Commission houses are still paying 12c per dozen for fresh case eggs, less freight. Old eggs are only worth about 6c per dozen.

VEGETABLES—Farmers deliveries of potatoes have been free, shutting out the carlot business to a large extent. Prices are easier at 3c decline. We quote: Potatoes, 40 to 45c per bushel; turnips, 25 to 30c; carrots, 55 to 60c; beets 40 to 50c; parsnips, 11-2c per lb.; dry onions,

\$1.25 to \$1.50 per bushel; cabbage, 2 to 2-2c per lb.; celery, 75c per dozen bunches; lettuce and parsley, 40c per dozen bunches; green onions, 25c per dozen; rhubarb 10c per lb.

DRESSED MEATS—Beef 7 to 7-1-2c choice city dressed; veal 8 to 9c; fresh mutton 10c; frozen mutton 8 to 9c; hogs weighing 100 to 170 lbs., \$6.40 to \$6.50 per cwt from 170 to 250 lbs., \$6.30 to \$6.40, and from 250 upwards, \$5.50 to \$6.20.

POULTRY—The market is practically bare of dressed poultry. Turkeys are worth about 11c per lb.; ducks, 10c; geese, 9c, and chickens 11c. Live chickens are worth about 65c per pair, very few offering.

HIDES—We quote: No. 1 inspected hides 7c to 7-1-4c; No. 2, 6 to 6-1-4c; No. 3, 5 to 5-1-4c. Branded hides, grade No. 2, and bulis No. 3, kip, 7c.; calf, 8 to 8-1-2c; weakh skins, 25 to 35c each; sheep skins, 40 to 50c each; horsehides, 50 to 75c each. Frozen hides are practically out of the market. Prices are weak.

WOOL—We quote prices here 8 to 9c for unwashed fleece.

SENECA ROOT—Market nominal at about 28c per lb.

TALLOW—Dealers are paying 31-2c for No. 1 tallow at country points. No. 2 is worth about 21-2c.

LIVE STOCK.

CATTLE—There is nothing doing in cattle except on butchers' account. Choice steers are worth 41-4c off cars here. At country points 3 to 4c is being paid. The market is easy in the absence of export buying, and lower prices are looked for, unless export business picks up shortly, as there is a surplus of stall fed cattle over local requirements. Yearling stockers are worth \$13 to \$14 each and 2 year olds \$22 to \$26.

SHEEP—Very little movement. Sheep and lambs are worth 43-4c off cars here.

HOGS—Receipts are fairly liberal. Choice hogs are worth \$4.75 to \$5.00, off cars here. Second grades 4 to 4-1-2c.

MILCH COWS—Very few offering. Quotations range from \$30 to \$45 each.

HORSES—Horses are coming forward freely for the spring trade and values remain steady. Good work horses weighing about 1,300 lbs., are worth here from \$150 to \$175 each, roadsters from \$150 to \$200 each, and extra heavy teams from \$350 upwards. Western horses of lighter weight run from \$120 to \$140 each, when halter broken.

FINANCIAL.

WINNIPEG BANK CLEARINGS.

Returns for the Winnipeg Clearing House for the week ending April 5, show as follows:

Week ending April 5, 1900 \$1,799,723
Corresponding week, 1899 1,578,454
Corresponding week, 1898 1,517,511

The monthly totals are as follows:

	1899.	1898.
January	\$7,683,052	\$6,347,168
February	6,209,471	5,517,340
March	6,756,121	5,968,275
April	6,316,431	6,240,000
May	7,472,855	8,683,364
June	8,211,716	7,396,799
July	8,169,595	6,316,238
August	7,995,291	6,180,355
September	8,281,759	6,414,551
October	12,089,000	9,347,692
November	14,435,219	11,653,669
December	12,966,905	10,708,731
Totals	\$107,786,814	\$90,874,325

1900.

January \$9,906,607
February 6,702,646
March 7,329,962

FINANCIAL NOTES.

The transactions at the Dominion government savings' bank, Winnipeg, for the month of March were Deposits, \$22,746; withdrawals, \$29,665.11. Withdrawals exceed deposits by \$6,919.11.

J. C. Brown, manager of the Bank of Hamilton at Brandon, has been transferred to Dundas, Ont., where a new branch is to be opened. His successor is accountant Patterson, of the Winnipeg branch.

James Baxter, private banker, and Ferdinand Lamleux, ex-accountant of the Ville Marie bank, were on March 31, sentenced by Judge Wrotele, at Montreal, to five years in the penitentiary upon the charge of having conspired to rob the Ville Marie bank.

The National Trust Company of Ontario, is applying to the Manitoba legislature for power to do business in this province. Power is also asked to take over the business of the Manitoba Trust Company under the terms of an agreement between the two companies.

Wm. Harvey, manager at Winnipeg for the London & Ontario Investment company, states that while the position of assistant manager at Winnipeg for the Canada Permanent & Western Canada Mortgage Corporation, has been offered him, he has not yet signified his acceptance.

A delegation from Morris, Man., waited on the provincial government this week to ask for a remission of the municipality's obligation to the province, amounting to \$5,000, contracted in connection with the settlement of an old debt to the C. P. R. The application was promised consideration.

At a recent meeting of the Brandon city council a by-law was read and passed authorizing the borrowing of \$45,000 from the Imperial bank, the rate of interest being 5-1-2 per cent. These loans are to be first charge on the revenues of the city. For all amounts borrowed promissary notes of the corporation are to be given, due not later than December next. Legislation is to be asked for to enable the city to issue debentures to cover some \$31,000 arrears. The interest on this new issue is to be met by proceeds from the sale of lands now held for taxes and such overdue taxes as may be collected.

The pathetic case of Baxter, the aged banker who has been sentenced to five years in penitentiary for his share in the wrecking of La Banque Ville Marie should surely act as a sharp warning to others who may be similarly going in the way of the transgressor. The jury which convicted him and his fellow conspirators and the judge who pronounced the sentence, are to be commended for the inflexibility with which they have dealt with the case in spite of the strongest appeals to the softer sides of their nature. The case was one of those where leniency would have been itself a crime.

The Winnipeg city police commissioners have awarded tenders for policemen's summer clothing to the Lindson's Bay Company. The price per suit is \$14.90 for serge, and \$20.25 for dress uniform.

Facts About "C" Horse Nails

I

It is an undoubted fact that the best Horse Nails always command the best price.

II

It is an undoubted fact that the "C" brand Horse Nails have always commanded the best price.

III

It is therefore a logical deduction—as it is an undoubted fact—that the "C" brand Horse Nails are the best.

IV

It is also an undoubted fact that "the best is the cheapest," therefore buy the "C" brand.

V

It is an undoubted fact established by 35 years, experience, among dealers and farriers throughout the Dominion, that the "C" brand Horse Nails are the best to buy—the best to sell—the best to use.

VI

We have only one price, and sell only to the trade.

Buyers of Horse Nails are specially requested to order the "C" brand made by the

Canada Horse Nail Company

MONTREAL.

MINING MATTERS.

BRITISH COLUMBIA.

Michigan men have invested in a group of mines in the Lardeau country.

A Rossland and Slocan syndicate has bought the Snow Shoe mine, Greenwood camp.

Shipments of ore from Slocan mines during the first 15 days of March amounted to 696 1-2 tons.

The War Eagle Company has placed a large order for hose and other fire apparatus with the Gutta Percha and Rubber Manufacturing Co., of Toronto, through their B. C. representative, A. G. McKenney.

The North Star mine, East Kootenay, is shipping from 75 to 100 tons of ore per day to the Trail smelter. The railway from Cranbrook to the end of the North Star tramway, over a distance of 21 miles, is completed.

The Chapleau Consolidated Gold Mining Company, Limited has recently been registered in London, Eng., with a capital of £75,000, in £1 shares, for the purpose of acquiring and developing the Chapleau group, on Lemon creek.

The points in dispute between the miners and mine owners in the Nelson camp have been all settled with the exception of one regarding the wages of muckers. The owners want a scale which will provide for less being paid for second class men than is paid for first class workers.

The Hall Mines, Ltd., of London, Eng., have transferred to Wm Curtis Ward and Wm George Jefferies, their entire property in consideration of \$50,000 in six per cent, first mortgage bonds. Mr. Ward who is named as principal, is general manager of the Bank of B. C., at Vancouver.

As the result of a conference which was held a few days ago between representatives of the mine owners and men involved in the dispute over wages at Rossland it is expected that an agreement will be arrived at within a few days which will effectually dispose of the trouble. The men will hereafter work on a piece scale.

No ore was shipped from any of the mines in Rossland camp last week, the first time in years that this has happened. Much work is, however, being done at the mines, and shipments on an active scale will be resumed as soon as a settlement of the labor dispute is arrived at. Most of the leading companies are utilizing the time to increase their facilities and will be in a better position than ever to handle ore when the trouble is over.

A meeting of the shareholders of the Okanagan Free Gold Mines was called to meet in Rossland on April 3 for the purpose of sanctioning the reconstruction of the company. The object of reconstruction is to enable it to make the shares assessable to a limited extent. It is proposed that the new company will have a capital stock of \$200,000, divided into 2,000,000 shares of the par value of ten cents each. Of these shares 1,600,000 will be divided amongst the present shareholders share per share. The remaining 400,000 shares will be placed in the treasury as a reserve fund. The 1,600,000 shares will be issued at eight cents paid up, the balance of two cents to be payable by assessment.

NORTHWESTERN ONTARIO.

A new compressor plant, hoist, ore cars and steel rails are being installed

at the Sirdar mine, in the Western Shoal Lake region, Lake of the Woods.

A controlling interest in the Manitou Lake Mining Company, which owns several properties in the Manitou country, Rainy River district, has been purchased by a Detroit syndicate.

INSURANCE MATTERS.

HAIL INSURANCE CO. TROUBLE.

There has been further trouble recently in connection with the management of the Manitoba Mutual Hail Insurance Company and as a result it is given out that President Townsend and possibly one of the directors will retire from the company's board, while W. C. Graham, who has been connected with the grain trade in Winnipeg, assumes the duty of manager and secretary-treasurer vice Taylor resigned. J. H. Schultz, one of the directors, has been appointed office assistant and travelling agent. An audit of the company's affairs is being made at the request of the board. Things have not been going on very harmoniously among the directors of the company owing to differences with regard to the appointment of a manager and at a meeting held last Saturday a faction which represents the perpetuation of the regime which was supposed to have been ended at the annual meeting of last winter were defeated on a motion on this question and Mr. Graham was elected over their nominee. This defeat was followed by a brutal assault at a late hour that night on one of the men who voted against them. The new management represents the interests of the farmers on the board and the change is to be accompanied, we understand, by a thorough reorganization of the company and the basis on which it does business. There are about 3,000 policies now in force on the company's books representing a large amount of insurance. This is regarded as a good asset and will be made the basis of an active canvass for new business this year. It is also proposed to re-arrange the plan on which the insurance is written so as to make the cost much less to the farmers. A mistake was evidently made in not dealing entirely with the services of the old board, at the annual meeting.

INSURANCE ITEMS.

J. Lydiatt, superintendent of the Dominion of Canada Guarantee and Accident Insurance Co., was in Winnipeg this week. J. P. Clarke, of Exeter, Ontario, who has been appointed manager at Winnipeg for this company, also arrived here this week and will enter upon his duties at once. Mr. Clarke is a brother of W. J. Clarke, manager here for the Manufacturers' Life.

Lac Du Bonnet Company.

This company has been re-organized by the election of a new board of directors, as follows: Dr. Gray, president, A. M. Nanton, vice-president, Walter T. Kirby, secretary-treasurer, and the following directors: Wm. Whyte, J. H. Munson, F. L. Patton, G. C. Mills, Wm. Brydon, and R. R. Scott. The sum of \$70,000 new capital has been subscribed by the sale of shares of the company, and further sale of treasury stock has been discontinued. The railway to the company's property is being pushed forward. New plant is being put in and the company expect to place a large

quantity of material on the market during the present season. This is one of the most important industrial enterprises yet floated in Manitoba.

Export Live Stock Trade.

Special to The Commercial.

Montreal, April 4.

The chief topic in this department of the trade at present is the prospect of the Imperial government's placing an embargo on Argentine cattle on account of foot and mouth disease being among the herds and according to many private cables received during the past two weeks from the most prominent salesmen on this point the indications are that it will go into effect on May 1st. This, of course, will be looked forward to with great interest as it no doubt will mean considerable to the Canadian shipper owing to the fact that our cattle have to compete with South America stock in all the leading foreign markets and as the quality of the latter has improved to such extent within the past four or five years they have competed very favorably with Canadian cattle, in fact, at certain seasons in the year they have at times sold for more money than ours, consequently if the importation of the same is prohibited into Great Britain the opinion of many in the trade here is that it will mean a boom to Canadian exporters during the coming season. The opening of navigation from the port of Montreal will likely be later than for the past few seasons on account of the severe weather and heavy snow storms, but notwithstanding this fact shippers in some cases have already commenced to make preparations for their summer business for which the prospects are fairly good, that is providing present prices in the foreign markets are maintained. The trade this spring has not been as active as that of 1899 on account of several reasons, the first of which is that Canadian shippers lost considerable money this winter by contracting for all the space from St. John, N. E., and Portland at 45c to 50s. Another reason is that ocean freight for May and June is likely to be scarce in consequence of which rates are held high and shippers do not feel disposed to make contracts at present, but steamship agents are firm in their views and some talk as high as 60s for Liverpool space. A contract for 1,000 spaces for May and June shipment to Liverpool has been made at 47s 6d. All the Glasgow freight on the Donaldson line has been contracted for at 40s per head without insurance, for the entire season and it is understood the same rate has been accepted by the Allans. There was not the same competition in the market this spring from American shippers for Ontario cattle and the result was that shippers had little difficulty in contracting for them at 4 1-2 to 5c per pound, live weight. Supplies of cattle in Ontario and Quebec are claimed to be larger this year than last and generally of good quality.

Business for Sale.

A full stock of Dry Goods, Groceries, Boots and Shoes, also store building and warehouse, situated in one of the best towns in the Northwest, surrounded by a thickly settled farming community. This is a first-class opening for a man with a capital of between \$2,000 and \$3,000. The stock is fresh and the building new. For particulars apply to J. W. Kelly, Edmonton, Alta.

BRITISH COLUMBIA
OFFICE OF THE COMMERCIAL

Business in British Columbia.

Vancouver, April 2.

Bank clearings indicate a steady advance in the aggregate business done in Vancouver from week to week since the first of the year; each week being in excess of the corresponding week of 1899. In some lines, however, business is reported very dull, money tight and collections slow. Particularly is this so in the produce trade. Owing to the continued mild weather prices for dairy produce are weak. There is an abundance of local creamery, and an excellent quality of dairy butter, considered by some as good for their trade as creamery and it is in good demand, at several cents less than creamery. In the vegetable market, although Fraser valley potatoes are freely offered causing the prices to drop, the better quality of potatoes grown at Ashcroft have advanced in price, owing to scarcity.

The New Westminster market was well attended this week. Quantities of new fresh garden vegetables were sold.

In retail trade, bargain days and selling out sales have been the feature of the month. These sales were so largely attended as to affect the regular trade quite seriously.

In Vancouver, building operations are still very active in spite of the high price of building material and the high wages demanded by carpenters, brick layers and painters.

There are some 150 houses averaging over \$2,000 each, including the lot, which have been contracted for, while a number of those who were going to build decided not to do so owing to the prevailing high prices. The lumber trade just at present, is quiet.

Spring salmon are running freely to the surprise and delight of the fishermen, who happen to be out, and a large number were sold to the freezing establishments and sent east as fresh frozen salmon.

British Columbia Markets.

(All quotations, unless otherwise specified, are wholesale for such quantities as are usually taken by retail dealers, and are subject to the usual reductions on large quantities, and to cash discounts.)

PRICES AT VANCOUVER.

By wire to The Commercial.

Vancouver, April 7.

BUTTER—Local creamery, 30c. California is selling at 28 to 29c. Fresh dairy, 26 to 27c.

EGGS—Fresh local, 20c; eastern case eggs, 16 to 15c, as to quality. Oregon eggs, 15 to 18c per dozen.

CHEESE—15c.

GREEN FRUIT—Oranges, n vel, \$2.50 to \$3.00; seedlings, \$2.00; California lemons, \$2.00 to \$3.50; bananas, \$2.75.

MEAL—Rolled oats, 90 lb. sack, \$2.50; two 45 lb. sacks, \$2.60; four 22 1/2 lb. sacks, \$2.80; ten 7 lb. sacks, \$2.50; oatmeal in 10 lb. sacks, per 100 lbs., \$3.25; in 50 lb sacks, \$3.00 per 100 lbs.

FLOUR—Delivered B. C. points—Manitoba patent, per barrel, \$1.60; strong bakers', \$1.70; Oregon, \$1.25 per barrel.

GRAIN—Oats, \$24 to \$25 per ton; wheat, \$25.

CURED MEATS—Hams, 14 to 14 1/2c; breakfast bacon, 13 to 13 1/2c; backs, 12 1/2c; long clear, 10c; rolls, 12 to 12 1/2c; smoked sides, 11c.

LARD—Tins, 10c per lb.; in pails and tubs, 9 1/2c.

FISH—Flounders, 3c; smelts, 7c; sea bass, 4c; whiting, 5c; soles, 6c; halibut, 6c; salmon, 9c; bladders, 7c; cod, 6c per lb.; crabs, 60c per dozen.

POULTRY—Turkeys, 14c; geese, 12c.

VEGETABLES—Potatoes, Fraser river stock, \$15.00 per ton; Ashcroft potatoes, \$20 to \$22 ton; cabbage 2 1/2 lb.; carrots, turnips and beets, \$12 per ton; red onions, 1 1/2c per lb., silver-skins 2 1/2c.

FEED—National mills chop, \$25 per ton, bran, \$20; shorts, \$22; oil cake meal, \$35 ton, l.o.b. Vancouver, including duty paid on imported stuff.

HAY—Per ton, \$10.

DRESSED MEATS—Beef, 7 1/2 to 8c; mutton, 11c; pork, 8 1/2 to 9c; veal, 10c.

LIVE STOCK—Steers, \$3.75 to \$4.00 per 100 lbs.; lambs, \$3.50 each; cows, \$3.25; sheep, \$3.00 to \$6.00 per 100 lbs.; lambs, \$3.50 each; hogs, \$6 per 100 lbs.

DRIED FRUITS—Apricots, 17 to 18c; peaches, 10 to 11c; pitted plums, 12 1/2 to 13 1/2c; prunes, French, 5 1/2 to 8c; London Layer raisins, \$2.00 to \$2.25 per box; Muscatel raisins, 2 crown, 8c; 3 crown, \$1.2c. 4 crown, 9c; dates, 9c; black figs, 6c; white figs, 9 1/2c; layer figs, 10 lb. box, \$1.45; silver prunes, 9 1/2c; quartered pears, 11 1/2 to 12 1/2c; half pears, 12 1/2 to 13c; nectarines, 14c; Valencia raisins, 7 1/2c; sultanas, 11 to 14c; blackberries, 16c; raspberries, 25c; seeded raisins, 9 1/2c.

NUTS—Almonds, 16c; filberts, 12 1/2c; peanuts, 9c; Brazil 12 1/2c; walnuts, 12c lb.

SUGARS—Powdered, icing and bar, 5 3/4c; Paris lump, 6 1/4c; granulated, 6 1/4c; extra C, 4 5/8c; fancy yellows, 4 1/2c; yellow, 4 3/8c lb.

SYRUPS—30 gallon barrels, 2 1/4c lb.; 10 gallon kegs, 2 3/4c; 5 gallon tins, \$1.75 each; 1 gallon tins, \$4.50 case of 10; 1 1/2 gallon tins, \$5.25 case of 20.

TEAS—Congo, Fair, 11 1/2c; good, 18c; choice, 29c; Ceylon and India: fair, 20c.

HARDWARE—Bar iron — Base, \$8.50. Horse shoe nails, discount, 40 per cent; horse shoes, keg, \$5.25. Wire nails — Base price, \$4.50; cut, \$3.75. Rope, Manila, 16c; boiled oil, 85c. White lead, \$8.50. Putty, \$3.50. Barbed wire, \$4.75 per 100 lbs.

PRICES IN THE KOOTENAY.

Nelson, April 7.

Butter is scarce and firm. Eggs are 1c lower. Oats \$1 ton lower. Hay \$2 ton lower. Business is quiet but the outlook is much improved by the settlement being made of the mining troubles.

Butter—Creamery, 30c; choice dairy, 24c.

Cheese—Large, 15 1/2c; small sizes, 16c per lb.

Eggs—Fresh rancho eggs, 19c.

Oats—Per ton, \$26.

Milfeed—Bran, \$20; shorts, \$22 per ton.

Flour—Manitoba patent, \$1.80.

Hay—Per ton, \$26.

Potatoes—Per ton, \$23.

British Columbia Notes.

Chas. C. Gibson, merchant, Rossland, has made an assignment.

The Paterson Shoe Co., Ltd., are opening at Vancouver.

Skelton & Brewster are opening a hotel at Peterborough.

Foster & Santo are opening a general merchandise at Peterborough.

Jos. Ratchford is opening a general store near the Thompson river bridge.

Mackenzie, Hambly & Co. have opened in business as milliners at Greenwood.

The McKay Saddlery & Harness Company, Ashcroft, has sold out to one Flatgate.

Goupil & Holden, painters, Greenwood, have dissolved, Holden buying out Goupil.

Joseph Walker, of Phoenix, general merchant, has assigned to Ralph Swaller, of Greenwood.

The Wm. Hunter Co., clothing, Silver-

ton, have disposed of their Phoenix branch to Michael McBean.

J. McLellan has bought the Benvenuto hotel at Kelowna from J. McLeod.

W. H. Dinsmore and Elizabeth Hescon, of the Vancouver Grocery Company, have dissolved partnership.

The Fairview Sash and Door factory company has dissolved partnership. Edward Cox will carry on the business.

The Atlin Lake Co., of England, capital \$50,000, local office Vancouver, is licensed as an extra provincial company.

Reports from the Victoria sealing fleet in northern waters indicate that they are meeting with success in their work this season.

The Rockland group of mines in the Stocan country has been sold to J. P. Graves, who will put money into the treasury to develop the group.

The Leland hotel at Vancouver has been sold to the Canada Permanent Loan and Savings Co. for transfer to another party. The late proprietors name was Hamilton and the purchase price \$6,500.

J. K. McCreedy, representing an English syndicate, is building ware houses in Vancouver with the object of importing European goods direct. Mr. McCreedy says his company is prepared to spend a million and a half of dollars in mines in British Columbia.

The city of Victoria is advertising for tenders for \$200,000 of its debentures to be in by May 14. The debentures may be tendered for in whole or part. They bear 4 per cent interest. The issue is under authority of "The Point Ellice Bridge Accident Loan By-Law."

The annual meeting of the Wholesale Grocers' Exchange of British Columbia, was held at Vancouver last Saturday. The wholesale grocery house of Victoria and Vancouver were well represented. Officers were elected for the ensuing year.

The following new companies have been incorporated: B. C. Fish, Glue & Oil Co., of Vancouver, capital \$30,000; Cariboo Exploration Co., of Vancouver, capital \$25,000; Umatilla Gold Mining Co., of Rossland, capital \$1,000,000; Huron Gold Mining Co., of Rossland, capital \$1,500,000.

The Kettle River railway bill is to come before the railway committee of the Dominion house again this week and a hard fight is being made to secure its passage. The company offers to guarantee that no ore will be carried over the road to any United States smelter in order to satisfy those who have raised this objection.

Planing Mill Burned.

Brown & Rutherford's planing mill, Winnipeg, the largest establishment of the kind in the city, was burned on Friday morning. Loss approximates \$15,000, with \$5,000 insurance. The loss includes a quantity of finished or partly finished work. The lumber yard and outbuildings were saved. The loss is a very severe one and will greatly hamper building work, as many contractors were depending upon this establishment for their requirements. G. W. Murray's planing mill was burned last fall, and the plant has not yet been fully restored, so that the city has been left with very limited facilities for securing work of this class, just at the commencement of the building season. The insurance is in the Commercial Union, \$3,000, and the Liverpool, London and Globe \$2,000.

Our Mr. W. S. CRONE

Is now on his Spring trip through Manitoba, the Northwest, and British Columbia, carrying the finest collection of samples for import trade we have yet shown. Comprising:

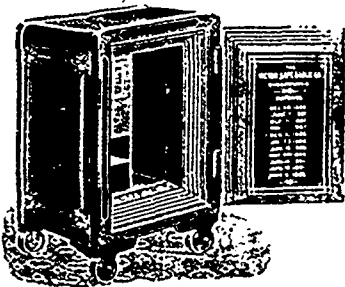
DOLLS TOYS FINE LEATHER GOODS PURSES
WALLETS ALBUMS
CHINA GLASSWARE VASES FIGURES
PIPES CIGARS ETC.

We recommend dealers in Holiday Novelties to wait and loo over Mr Crone's samples, as we feel assured they will not see during this year Their Equal for Extent and Variety.

The H. A. NELSON & SON CO. Ltd.

OFFICES AT
 56-58 Front St. West, Toronto

MONTREAL



**ANOTHER
 BARGAIN
 IN SAFES**

FOR ONE WEEK
 ONLY

No. 3½ VICTOR SAFE

FOR **\$54.00** CASH F.O.B.
 WINNIPEG

\$60.00 on Time

EASY TERMS

Now is your Time to buy a Safe

DIMENSIONS No. 3½

	Height	Width	Depth
OUTSIDE.....	31 in.	21 in.	21 in.
INSIDE	17 "	12 "	12 "

Weight, 650 lbs; 4 Tumbler Lock; Sub-Treasury 5x6x9, with Duplicate Flat Keys and Metal Cash Tray. Drawer and two Pigeon Holes under Sub-Treasury. Book space 19x9x12. Fine Flanged Door.

KARL K. ALBERT

GENERAL AGENT

268 McDermott Avenue - - WINNIPEG MAN.

Specially Made For
 Family Use.

OGILVIE'S
FLOUR

Always ask for
 OGILVIE'S

TORONTO WHOLESALE TRADE.
Special to The Commercial.

Toronto, April 7.
Dry goods trade shows some improvement. Values are very firm. Bad country roads check business. The Jackward spring and Easter coming later than usual have made business a little slow. The wholesale summer millinery openings will be held the end of this month.

Hardware trade is opening up well this month. Shipments are larger owing to lower freights. Prices generally firm. Cotton twine is 1-2 to 1c higher. Barb wire is \$1 per ton dearer, now \$3.77 1-2 here per 100 pounds. Manila rope is 1-2c dearer at 16c. Pig skin is higher at 37 to 38c. Some cutting on low price scales by manufacturers is reported. Cement and fire bricks are firm and advancing. Lead pipe is firmer for Maritime provinces trade, but unchanged here.

Groceries—There is further improvement in trade. Coffees are a shade easier, but no lower. Canned corn beef and roast beef are dearer. Valencia raisins are firmer. It is reported here that canned salmon will open 50c per case higher than a year ago. Canadian heavy mess barrel pork and lard are firmer in sympathy with higher prices for hogs. Refined bright corn syrup is 10c dearer for 2 and 3 gallon pails, and 1-8c on bulk.

TORONTO GRAIN AND PRODUCE.
Special to The Commercial.

Toronto, April 7.
Owing to the spring break up of the roads, grain deliveries have been light. Wheat is firm. Manitoba wheat 1-2c higher. Oats firm and unchanged. Flour dull and firm. The butter market is weak, on large receipts of new spring goods. Eggs will likely hold firm until after Easter.

Flour—Manitoba patent, \$3.90 to \$4.00, Manitoba bakers, \$3.60, car lots, Ontario roller, \$2.55 to \$2.80 per barrel for car lots at country mills.

Wheat—Ontario winter wheat 65 1-2 to 66c for carlots at country points; Ontario spring, 66c at eastern Ontario points; No. 1 hard, 80 1-2c, North Bay.

Oats—26 1-2 to 28c at country points for carlots, as to quality and freights.

Barley—No. 2, 42 to 43c country points.

Milfeed—Shorts, \$17 to \$18 per ton; bran, \$16 to \$17 per ton for cars at country mills.

Oatmeal—\$3.20 in bags per barrel, and \$3.30 in wood for carlots, Toronto.

Eggs—New laid, 13 1-2c; fresh held, 11c.

Butter—Large dairy rolls, 14 to 16c; creamery, tubs, 21c.

Cheese—13 to 13 1-2c for job lots to the local trade.

Hides—9c for No. 1 cows; No. 1 heavy steers, 9 1-2c; country hides 1 1-2c under these prices; sheepskins and lambskins, \$1.25 to \$1.40; calfskins, 11c for No. 1; and 10c for No. 2; tallow, 5 3-4 to 6c.

Wool—Washed fleeces, 19c; unwashed, 11c.

Beans—\$1.85 per bushel for hand-picked.

Dried Apples—5 1-2c for round lots; evaporated, 7 to 7 1-2c.

Honey—Sold at 9 to 10c in bulk.

Poultry—Chickens, 50 to 55c per pair; turkeys, 13c per lb.; geese, 7 to 8c; ducks, 60 to 80c per pair.

Potatoes—Steady at 38 to 39c per bag for car lots.

Hogs—Dressed hogs, \$6.50 to \$7.00 per 100 pounds for car lots on track, as to grade.

Seeds—Timothy, \$2.50 to \$3.50 per 100 lbs.; red clover, \$3 to \$6; alsike, \$1.20 to \$7.

TORONTO LIVE STOCK MARKET.
Special to The Commercial.

Toronto, April 4.
Receipts at the semi-weekly market yesterday were 1,200 cattle, 200 sheep and lambs, and 2,000 hogs.

Export cattle—Ordinary to good cattle were almost unsaleable. Average heavy shippers sold at \$4.50 to \$4.75 per cwt. and lighter stock at \$4.25 to \$4.40 per cwt.

Butchers' cattle—A few odd cattle sold at high as \$4.50 per cwt. Loads of good heifers and steers sold at \$4 to \$4.25 per cwt. Many of the good butchers' cattle sold at \$3.50 to \$3.80 per cwt.

Export hulls—Weaker at \$3.65 to \$3.90 per cwt for heavy stock and \$3.40 to \$3.60 for lighter cattle.

Stockers—3 to 3 1-2c per lb.

Sheep—Slightly better trade at \$3 50 to \$4 per cwt. for export ewes and \$3 to \$4 a head for butchers' sheep. Lambs, \$4.50 to \$5.50 per cwt and \$5.50 to \$5.80 for picked ewes and wethers.

Hogs—Advanced 25c per cwt. to \$6 25 per cwt. for selections of 160 to 200 lbs. natural weight, and \$5.75 per cwt for thick and light fats.

FRIDAY'S MARKET.

Toronto, April 7.

At the semi-weekly market yesterday receipts were 35 carloads including 600 cattle, 300 sheep and lambs and 1,000 hogs.

Export cattle were dull and weak on discouraging cables and high ocean freights. The top paid was \$4.80 per 100 lbs. Butchers' cattle in good demand and firm at Tuesday's prices. Sheep steady. Lambs firmer at \$4.50 to \$4.75 and up to \$5.75 to \$6.12 1-2 for picked lots. Hogs unchanged at Tuesday's prices.

MONTREAL GRAIN AND PRODUCE.
Special to The Commercial.

Montreal, April 7.

Oats are stronger and there is a good enquiry for May at 3-4 to 1c advance. In store, oats are 1 1-2 to 1 3-4c higher. Flour is firmer at 10c advance on the inside quotation. Feed is \$1 higher. Hides steady. Lambskins are 5c higher. Eggs active and steady. Butter easier at 1s decline on creamery and 4c on dairy. Dressed poultry are in very light supply. Quotations are:

Oats—31 1-2 to 32c in store, 33 to 33 1-2c afloat, May.

Barley—No. 1, afloat, May, 51c; No. 2 afloat, May, 49c.

Flour—Prices to the trade delivered are: Manitoba strong bakers, \$3.45 to \$3.60; Manitoba patents, \$3.80 to \$4.00.

Milfeed—Bran, \$18 per ton; shorts \$19, including sacks.

Oatmeal—Rolled oats, \$3.40 per barrel on track and \$1.65 per sack.

Hides—No. 1 green city hides, 9c; No. 2, 8c; No. 3, 7c; No. 1 buffs, 9 1-2 to 10c; calfskins, No. 1, 11c; No. 2, 9c; lambskins, 10 to 15c; tallow, 4 to 4 1-2c.

Eggs—Strictly fresh, 15 1-2 to 16c.

Butter—Choice fresh dairy, 14 to 15c.

Butter—Choice creamery, 19 to 20c per lb.

Cheese—Finest, 12 to 13c. Fodder cheese, 11 to 11 1-2c per lb.

Beans—\$1.70 to \$1.85 per bushel, as to quality.

Potatoes—35 to 40c per bag on track.
Dressed Hogs—\$7.25 to \$7.50 per 100 lbs.

MONTREAL LIVE STOCK PRICES.
Special to The Commercial.

Montreal, April 3.

Receipt of live stock at the East End Abattoir market yesterday were 400 cattle and 75 sheep and lambs.

The tone was a trifle firmer, but prices showed no actual advance. A moderately active trade was done. Choice steers sold at 43-4 to 5c; good at 41-4 to 41-2c; fair at 31-2 to 4c; and common at 21-2 to 31-1c per pound live weight. Trade in sheep was slow owing to the continued small offerings and prices ruled firm at 4 to 43-4c per pound. Yearling lambs met with a ready sale at 5 to 53-4c per pound.

At the Grand Trunk stock yards at Point St Charles, there was a good supply of hogs, for which the demand was good, and the tone of the market was steady, with all offerings taken at 51-2 to 53-4c per pound, live weight, weighed off cars.

THURSDAY'S MARKET.

Montreal, April 6.

At the East End Abattoir yesterday receipts were 450 cattle and 150 sheep and lambs, and 250 hogs.

The cattle market was more active. More choice offering for Easter. Choice cattle sold at 5 to 51-2c; good at 41-2 to 43-4c; fair at 31-2 to 4c, and others at 21-2 to 3c per pound. Sheep sold at 4 to 43-4c per pound. Yearling lambs at 5 to 51-4c per pound. Hogs, \$5.60 to \$5.75 per 100 pounds.

LONDON SUGAR MARKET.

Special to The Commercial.

London, April 5.

Beet steady, April 10s 2 1-4d.

BRITISH LIVE STOCK MARKETS.

London, April 2.—The market for cattle was stronger, prices advancing 1-4c. Choice United States sold at 13 1-4c, and Argentines at 12 1-4c. The market for sheep was weaker, prices declined 1 1-2c with Argentines selling at 14 1-2c to 15c.

Liverpool, April 2.—Trade in cattle was firm, choice Canadians sold at 12c.

LIVERPOOL CHEESE MARKET.

Special to The Commercial.

Liverpool, April 6.

Cheese is now quoted at 39s 6d for white, and 62c 6d for colored.

LIVERPOOL CATTLE MARKET.

Special to The Commercial.

Liverpool, April 5.

The cattle market was weaker at 11 to 11 1-2c per pound; estimated dressed weight.

Shoe and Leather Trade Notes.

There has been an advance of 1c per lb. in the price of sole leather at New York and Boston as the result of a more active demand.

The market for leather at Montreal continues steady at old prices. Boot and shoe manufacturers are reported to be purchasing sparingly owing to belief that prices cannot go higher and may decline.

Many local labor strikes are reported from the United States, largely in the building trades.

New York Wheat.

New York, April 2.—Wheat, May opened 75 7-8c, closed 74 1-8c a. July opened 74 1-8c, closed 74 1-4c b.

New York, April 3.—Wheat, May opened 73 7-8c, closed 74 3-8c b. July opened 74c, closed 74 1-2c b.

New York, April 4.—Wheat, May opened 74 1-2c, closed 74 7-8c. July opened 74 5-8c, closed 74 7-8c c.

New York, April 5.—Wheat, May opened 74 5-8c, closed 74 1-4c a. July opened 74 5-8c, closed 74 1-4c a.

New York, April 6.—Wheat, May opened 74 1-2c, closed 73 7-8c a. July opened 71 5-8c a, closed 73 7-8c b.

New York, April 7.—Wheat closed at 73 3-4c for May and 73 7-8c for July options.

Chicago Board of Trade Prices

Chicago, April 2.—Wheat, May opened 67c, closed 67 1-8c b. July opened 68c, closed 68 3-8c. Corn, May opened 37 7-8c, closed 39 3-8c. July opened 39 5-8c, closed 40 1-8c a. Oats, May opened 24 3-8c, closed 24 1-2c. July opened 23 7-8c, closed 24 1-8c. Pork, May opened \$12.60, closed \$12.75 b. July opened \$12.20, closed \$12.32 1-2. Lard, May opened \$6.45, closed \$6.47 1-2. July opened \$6.50, closed \$6.55. Ribs, May opened \$6.57 1-2, closed \$6.62 1-2. July opened \$6.52 1-2, closed \$6.55.

Chicago, April 3.—Wheat, May opened 67 1-2, closed 68c a. July opened 68 7-8c, closed 69 1-4c. Sept. opened 70, closed 69 3-4c. Corn, May opened 39 3-4c, closed 41 3 8c a. July opened 40 1-2 to 3-4c, closed 42c. Sept. opened 42c, closed 42 1-2c. Oats, May opened 24 5-8c, closed 25 1-2c. July opened 24 1-4c, closed 25 3-8c. Pork, May opened \$1. to \$13.20, closed \$13.20. July opened \$12.50 to \$12.57 1-2, closed at \$12.82 1-2. Lard, May opened \$6.72 1-2, closed \$6.70. July opened \$6.80, closed \$6.77 1-2. Ribs, May opened \$6.90, closed \$6.90. July opened \$6.75 to \$6.85, closed \$6.85 a. Flax, cash \$1 65 b. May \$1.65 b. Sept. \$1.20 b. Oct. at \$1.15 1-2 b.

Chicago, April 4.—Holiday. No market.

Chicago, April 5.—Wheat, May opened 67 3-4c, closed 67c b. July opened 69c, closed 68 3 8c b. Sept. opened 69 3-4c, closed 69 1-8c b. Corn, May opened 40 5-2 to 7-8c, closed 40 7-8c b. July opened 41 3-8 to 5-8c, closed 41 1-2c b. Sept. opened 42 to 3-8c, closed 42 1-8c b. Oats, May opened 25 1-4, closed 25 7-8c. July opened 25 1-4, closed 25 1-8c. Pork, May opened at \$13.15 to \$13.20, closed \$12.90 1-2. July opened \$11.82 to \$11.90, closed \$12.82 1-2. Lard, May opened \$6.70, closed at \$6.70. July opened \$6.75, closed \$6.80. Ribs, May opened \$6.90 a, closed \$6.97 1-2. July opened \$6.80 a, closed at \$6.82 1-2. Flax, cash \$1.70. May \$1.09 b. Sept. \$1.23 b.

Chicago, April 6.—Wheat, May opened 67 1-2, closed 66 3-4c a. July opened 68 5-8 to 7-8c, closed 63 1 8c a. Sept. opened 69 1-4c, closed 68 3-4c. Corn, May opened 41 to 1-8c, closed 40 1-4c a. July opened 41 3-4c, closed 41 a. Sept. opened 42 3-8c, closed 41 1-2c. Oats May opened 25 1-8c, closed 24 7-8. July opened 25 1-8c, closed 24 1-2c. Pork, May opened \$12.97 1-2, closed at \$12.67 1-2. July opened \$12.75, closed \$12.67 1-2. Lard, May opened \$6.65, closed \$6.62 1-2. July opened \$6.75, closed \$6.71 1-2. Ribs, May opened at \$6.97 1-2, closed \$6.92 1-2. July opened \$6.80, closed \$6.77 1-2. Flax, cash \$1.70. May \$1.70. Sept. \$1.24. Oct. \$1.17.

Chicago, April 7.—May wheat opened at 67 1-4c, and ranged from 66 5-8c to 67 3-8c. Closing prices were:

Wheat—April 66 1 c, May 66 1 2, July 67 3-4c.

Corn—May 10c, July 10 5-8c.

Oats—May 21 3-4c, July 21 1 c.

Pork—May \$12.70.

Lard—May, \$6.65.

Ribs—May, \$7.05.

A week ago May option closed at 66 3-4c. A year ago May wheat closed at 71c, two years ago at \$1.00; three years ago at 66c; four years ago at 64 5-8c; five years ago at 55c, and six years ago at 61 3-8c.

CHICAGO FLAX MARKET.

Chicago, April 7.—The market for flax seed closed to-day at \$1.71 for cash and May and \$1.55 for September.

MINNEAPOLIS WHEAT.

Minneapolis, April 7.—Wheat closed at 64 1-4c for May; cash No. 1 hard closed at 66c, and cash No. 1 northern at 65c.

DULUTH WHEAT MARKET.

No. 1 northern wheat at Duluth closed as follows for each day of the week:

Monday—May, 67 3-8c, July, 68 5-8c.

Tuesday—May, 67 3-8c; July, 68 1-2c.

Wednesday—May, 68 1-4c; July, 69 3-8c.

Thursday—May, 67 3-8c, July, 68 1-2c.

Friday—May, 67 1-4c; July, 68 3-8c.

Saturday—May, 66 7-8c, July, 68c.

On Saturday cash 1 hard closed at 67 1-8c, and cash 1 northern at 65 7-8c.

A week ago May wheat closed at 67c. A year ago May wheat closed at 70 1-4c; two years ago at \$1.00; three years ago at 69 7-8c; four years ago at 63 3-8c; five years ago at 60 1-4c, and six years ago at 61 1-2c.

LIVERPOOL PRICES.

Liverpool, April 7.—Wheat closed unchanged.

SEEDING.

The fine warm weather of the past week or two has enabled farmers to begin seeding operations throughout Manitoba. At the end of last week some reports of the commencement of seeding were coming in, and this week the weather was very favorable throughout. By Monday the land will be in fine condition in nearly all parts of the province. The seeding season will be a very short one this year. Owing to the fine, open fall of last year, the farmers were enabled to prepare nearly all their land for the seed, and very little plowing remains to be done this spring, so that a short spell of fine weather will enable the farmers to finish their spring work in good shape.

Nursery Stock.

An amendment to the San Jose scale act has been passed by the Dominion parliament to the effect that nursery stock may be imported into Canada at points to be named by the governor-in-council, under regulations of the governor-in-council. It is understood that the amendment has been made to permit the importation of nursery stock from the United States to Manitoba, the Territories and British Columbia. One port each in Manitoba and British Columbia will be named, where the stock can be imported and where regulations for fumigation will be made. The San Jose act prohibited the importation of nursery stock from the United States entirely.

Duluth, April 6. — Lake navigation opened to-day when the steamer *Sault* left for Grap! Marais, 120 miles down the north shore. Boats from the lower lakes cannot arrive for some time owing to ice.

WINNIPEG CLOSING WHEAT.

Marked closed very dull to-day, owing to weakness at other markets. Cash No. 1 hard closed nominal at 67c.

WESTERN BUSINESS ITEMS.

The new Edmonton bridge was expected to be open for traffic this week.

Dan Reid, fish merchant, Selkirk, made an assignment this week to Newton & Davidson.

J. W. Kelly, Edmonton, is offering a general store business for sale in an Alberta town.

The Carberry Agricultural society sold its grounds by auction last Saturday, realizing \$1,150.

F. W. Thompson, manager of the Ogilvie Milling Company, returned from Montreal on Thursday.

W. C. Lusk, photographer, Portage la Prairie, has sold his branch galleries at Moose Jaw and Regina.

Stocks of Huesione in Winnipeg are exhausted, the large demand for this article for treating seed having cleaned out the supply.

Chas. E. Dingle has been appointed selling agent here for H. W. Johns & Co., of New York, manufacturers of asbestos goods.

The fittings for Gault Bros.' new warehouse at Winnipeg were destroyed in the fire at Brown & Rutherford's mill on Friday morning.

Inglis & Stewart, manufacturers' agents and commission merchants, Winnipeg, have been appointed agents for Chas. & Sanborn's celebrated coffees.

L. Wainstock, of Winnipeg, purchased the stock of Iredale & Co., general merchants, Fort Qu'Appelle, which was offered at auction on Wednesday. The rate was 40 1-2c on the dollar. The stock was valued at \$2,158.

The stock and fixtures of Jas. Watt & Co., tobaccos, pipes, etc., Winnipeg, was sold to Kenneth McKenzie at 20 1-2c on the dollar for the stock and 26c on the dollar for the fixtures. It is understood that the stock has been purchased for H. Holman and Miller.

Arrangements are being made for resuming work on the Canadian Northern Railway (Dauphin road). The portion of Manitoba through which this road will be carried the present season, toward the North Saskatchewan river, is practically an unknown and uninhabited country, with abundance of wood and water.

Manager Whyte, of the Canadian Pacific Railway, states that the company took over the lease of the Great West Central Railway of Manitoba on April 5. He was unable to say when the Manitoba and Northwestern road would be taken over. The company has also taken over the Boundary Creek Railway in British Columbia from the contractors.

Five train loads of settlers arrived at Winnipeg on Friday from the east.

New York, April 2.—The Woolson Spice Company, a part of the American Sugar Co., reduced its price of package coffee half a cent a pound to-day, making the price 9 1-2c. The Arbuckle Brothers met the reduction.

The strike of the rolling mills employees of the Hamilton Steel and Iron company at Hamilton, Ont., is over, as well as the strike at the bridge works, and both establishments are running full blast.