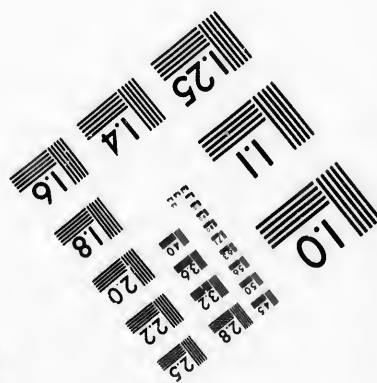
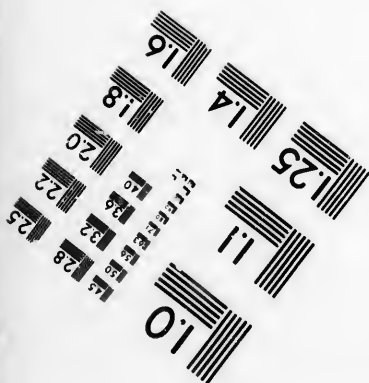
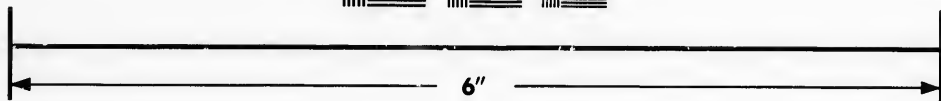
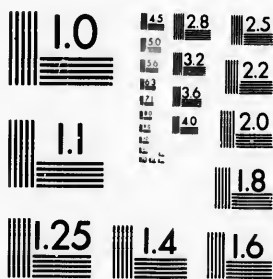


**IMAGE EVALUATION
TEST TARGET (MT-3)**



**Photographic
Sciences
Corporation**

23 WEST MAIN STREET
WEBSTER, N.Y. 14580
(716) 872-4503

1.5
1.8
2.0
2.2
2.5
2.8
3.2
3.6
4.0
4.5
5.0
5.6
6.3
7.1
8.0
9.0
10.0
11.2
12.5
14.0
16.0
18.0
20.0
22.5
25.0
28.0
31.5
36.0
40.0
45.0
50.0
56.0
63.0
71.0
80.0
90.0
100.0

**CIHM/ICMH
Microfiche
Series.**

**CIHM/ICMH
Collection de
microfiches.**



Canadian Institute for Historical Microreproductions / Institut canadien de microreproductions historiques

1.5
1.8
2.0
2.2
2.5
2.8
3.2
3.6
4.0
4.5
5.0
5.6
6.3
7.1
8.0
9.0
10.0
11.2
12.5
14.0
16.0
18.0
20.0
22.5
25.0
28.0
31.5
36.0
40.0
45.0
50.0
56.0
63.0
71.0
80.0
90.0
100.0

© 1987

Technical and Bibliographic Notes/Notes techniques et bibliographiques

The Institute has attempted to obtain the best original copy available for filming. Features of this copy which may be bibliographically unique, which may alter any of the images in the reproduction, or which may significantly change the usual method of filming, are checked below.

L'Institut a microfilmé le meilleur exemplaire qu'il lui a été possible de se procurer. Les détails de cet exemplaire qui sont peut-être uniques du point de vue bibliographique, qui peuvent modifier une image reproduite, ou qui peuvent exiger une modification dans la méthode normale de filmage sont indiqués ci-dessous.

- | | |
|--|--|
| <input type="checkbox"/> Coloured covers/
Couverture de couleur | <input type="checkbox"/> Coloured pages/
Pages de couleur |
| <input type="checkbox"/> Covers damaged/
Couverture endommagée | <input type="checkbox"/> Pages damaged/
Pages endommagées |
| <input type="checkbox"/> Covers restored and/or laminated/
Couverture restaurée et/ou pelliculée | <input type="checkbox"/> Pages restored and/or laminated/
Pages restaurées et/ou pelliculées |
| <input type="checkbox"/> Cover title missing/
Le titre de couverture manque | <input checked="" type="checkbox"/> Pages discoloured, stained or foxed/
Pages décolorées, tachetées ou piquées |
| <input type="checkbox"/> Coloured maps/
Cartes géographiques en couleur | <input type="checkbox"/> Pages detached/
Pages détachées |
| <input type="checkbox"/> Coloured ink (i.e. other than blue or black)/
Encre de couleur (i.e. autre que bleue ou noire) | <input checked="" type="checkbox"/> Showthrough/
Transparence |
| <input type="checkbox"/> Coloured plates and/or illustrations/
Planches et/ou illustrations en couleur | <input type="checkbox"/> Quality of print varies/
Qualité inégale de l'impression |
| <input type="checkbox"/> Bound with other material/
Relié avec d'autres documents | <input type="checkbox"/> Includes supplementary material/
Comprend du matériel supplémentaire |
| <input type="checkbox"/> Tight binding may cause shadows or distortion
along interior margin/
La reliure serrée peut causer de l'ombre ou de la
distorsion le long de la marge intérieure | <input type="checkbox"/> Only edition available/
Seule édition disponible |
| <input type="checkbox"/> Blank leaves added during restoration may
appear within the text. Whenever possible, these
have been omitted from filming/
Il se peut que certaines pages blanches ajoutées
lors d'une restauration apparaissent dans le texte,
mais, lorsque cela était possible, ces pages n'ont
pas été filmées. | <input type="checkbox"/> Pages wholly or partially obscured by errata
slips, tissues, etc., have been refilmed to
ensure the best possible image/
Les pages totalement ou partiellement
obscurcies par un feuillet d'errata, une pelure,
etc., ont été filmées à nouveau de façon à
obtenir la meilleure image possible. |
| <input checked="" type="checkbox"/> Additional comments:/
Commentaires supplémentaires: | |

Distortion of print may result from creased pages.

This item is filmed at the reduction ratio checked below/
Ce document est filmé au taux de réduction indiqué ci-dessous.

10X	12X	14X	16X	18X	20X	22X	24X	26X	28X	30X	32X
<input type="checkbox"/>	<input type="checkbox"/>	<input type="checkbox"/>	<input type="checkbox"/>	<input type="checkbox"/>	<input type="checkbox"/>	<input type="checkbox"/>	<input type="checkbox"/>	<input type="checkbox"/>	<input type="checkbox"/>	<input type="checkbox"/>	<input checked="" type="checkbox"/>

The copy filmed here has been reproduced thanks to the generosity of:

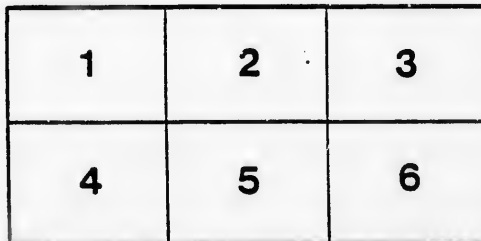
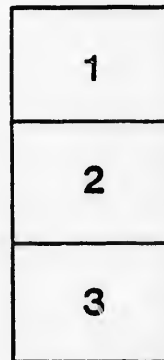
Archives of Ontario
Toronto

The images appearing here are the best quality possible considering the condition and legibility of the original copy and in keeping with the filming contract specifications.

Original copies in printed paper covers are filmed beginning with the front cover and ending on the last page with a printed or illustrated impression, or the back cover when appropriate. All other original copies are filmed beginning on the first page with a printed or illustrated impression, and ending on the last page with a printed or illustrated impression.

The last recorded frame on each microfiche shall contain the symbol \rightarrow (meaning "CONTINUED"), or the symbol ∇ (meaning "END"), whichever applies.

Maps, plates, charts, etc., may be filmed at different reduction ratios. Those too large to be entirely included in one exposure are filmed beginning in the upper left hand corner, left to right and top to bottom, as many frames as required. The following diagrams illustrate the method:



L'exemplaire filmé fut reproduit grâce à la générosité de:

Archives of Ontario
Toronto

Les images suivantes ont été reproduites avec le plus grand soin, compte tenu de la condition et de la netteté de l'exemplaire filmé, et en conformité avec les conditions du contrat de filmage.

Les exemplaires originaux dont la couverture en papier est imprimée sont filmés en commençant par le premier plat et en terminant soit par la dernière page qui comporte une empreinte d'impression ou d'illustration, soit par le second plat, selon le cas. Tous les autres exemplaires originaux sont filmés en commençant par la première page qui comporte une empreinte d'impression ou d'illustration et en terminant par la dernière page qui comporte une telle empreinte.

Un des symboles suivants apparaîtra sur la dernière image de chaque microfiche, selon le cas: le symbole \rightarrow signifie "A SUIVRE", le symbole ∇ signifie "FIN".

Les cartes, planches, tableaux, etc., peuvent être filmés à des taux de réduction différents. Lorsque le document est trop grand pour être reproduit en un seul cliché, il est filmé à partir de l'angle supérieur gauche, de gauche à droite, et de haut en bas, en prenant le nombre d'images nécessaire. Les diagrammes suivants illustrent la méthode.

ails
du
odifier
une
mage

rata
o
elure,
à



32X

LIST OF

FOR SUB-DIVISION I

TOWNSHIP OF

FOR THE YEAR 18

Concession Number	No. on Assessor's Roll	Name	Concession	No. of Lots	Other Description	Concession Number	No. on Assessor's Roll	Name	Concession	No. of Lots	Other Description
A											
1	45	Arbuckle, William	1		S. corner 23	90	31	McEwan			
2	162	Aldworth, Cicero	4		E. 1/2 7	91	71	McColl			
3	145	Armstrong, Francis	4		E. 1/2 15	92	72	McColl			
4	168	Armstrong, Noah	5		S. 1/2 of N. 1/2 12	93	83	McEwan			
5	169	Armstrong, John	3		15	94	85	McEwan			
B											
6	7	Holton, George	1		part of 2	95	87	McLara			
7	67	Burns, James	2		22	96	88	McLara			
8	108	Brooks, James	4		E. 1/2 of E. 1/2 5	97	103	McMah			
9	43	Baker, Alva	1		N. 1/2 21	98	118	McGreg			
10	125	Bonthron, James	3		18	99	140	McDon			
11	126	Bell, John	3		19	100	176	McShir			
12	127	Bell, Paul D.	3		20	101	194	McAlli			
13	128	Buchanan, Sr., William	3		21	102	195	McAlli			
14	129	Buchanan, Jr., William	3		21	103	18	McTagg			
15	151	Bell, Daniel	4		24	104	104	Northco			
16	156	Berry, Adam	4		N. 1/2 24	105	105	Northco			
17	581	Bry, Richard	S. B.		E. 1/2 8	106	106	Northco			
C											
18	3	Crawford, William	1		part 3 and 4	108	86	O'Brien			
19	34	Carr, William	1		S. 1/2 21	109	111	O'Brien			
20	127	Corbet, John	4		13	110	112	O'Brien			
21	15	Case, Benjamin	1		5	111	21	Otten, J.			
22	102	Carley, John	3		7	112	22	Otten, S.			
23	69	Campbell, William	2		9 and 10	113	17	Oke, H.			
24	119	Chapman, William	3		14	E					
25	133	Carlile, Robert	3		N. 1/2 24 and S. 1/2 25	114	2	Pinch,			
26	172	Caldwell, William	5		part 17, 18 and 20	115	32	Patterson			
27	196	Carrie, William	6		23	116	33	Patterson			
28	580	Ching, Thomas	S. B.		5	117	41	Patterson			
29	201	Carlie, Samuel	7		N. 1/2 19	118	42	Petty, G.			
D											
30	62	Daw, Simeon	2		4	119	94	Phillips			
31	77	Dougal, William	2		E. 1/2 14 and 15	120	95	Phillips			
32	120	Darling, Thomas	2		S. 1/2 13	F					
33	34	Dodds, Andrew	1		16 and 17	121	20	Ross, G.			
34	148	Dick, Thomas	4		18	122	91	Rieth, V.			
35	149	Dick, Sr., David	4		19	123	142	Reynold			
36	150	Dick, Jr., David	4		19	124	177	Redmon			
37	153	Deters, Henry	4		22	125	181	Redmon			
38	191	Dignac, Ross	6		W. 1/2 20	126	63	Russell,			
39	122	Dignan, Warran	6		E. 1/2 20	127	204	Rile, J.			
40	379	Dunsford, Thomas	S. B.		E. 1/4 4	G					
41	580	Dunsford, William	S. B.		W. 1/4 4	128	23	Sprague			
E											
42	63	Elder, William	2		W. 1/2 16 and 17	129	158	Spackm			
43	12	Earl, William	1		4	130	139	Shank,			
44	25	Elder, James W.	1		S. 1/2 17	131	59	Swimer			
45	75	Eacrett, Christopher	2		S. 1/2 13	132	78	Shirray			
46	76	Eacrett, Richard	2		S. 1/2 13	133	167	Souther			
47	170	Elder, William	5		S. 1/2 of S. 1/2 14	134	173	Soldan,			
48	166	Eston, Richard	5		E. 1/2 of E. 1/2 10	135	188	Shuart,			
49	124	Edwards, Millar	3		17	T					
F											
50	193	Ferguson, Robert	6		21	136	11	Tindall,			
51	163	Follock, Enoch	5		S. 1/2 3	137	73	Taylor,			
52	205	Forrest, Cooper	7		24	138	115	Taylor,			
G											
53	106	Gould, Joseph	3		8	139	116	Taylor,			
54	189	Grandy, William	6		19	140	157	Troyer,			
55	190	Grandy, William	6		19	141	203	Troyer,			
56	44	Gichrist, John	1		S. 1/2 22	V					
57	200	Granger, John	7		E. 1/2 of E. 1/2 15	142	19	Whitef			
58	202	Grant, William	7		20	143	31	White,			
H											
59	1	Howard, Robert H.	1		1	144	47	Wilson,			
60	145	Hunter, Leonard	5		S. 1/2 of S. 1/2 9	145	60	Whitef			
61	16	Hawkins, George	1		8	146	131	Wier, J.			
62	50	Heffernan, John	1		25	147	176	Wilson,			
63	67	Hawkins, William	2		N. 1/2 8	148	187	Wilson,			
64	469	Hermannous, Jacob	7		S. 1/2 25	I					
65	10	Hawkshaw, John	1		2	J					
I											
66	48	Ingram, Alexander	1		S. 1/2 24	K					
J											
67	166	Jarrot, John	7		N. 1/2 25	L					
68	154	Johnston, John	4		23	M					
K											
69	4	Kalpatrick, Ralph	1		P. L. 5	Mc					
70	93	Kerr, William	2		S. 1/2 23	McL					
L											
71	61	Leadman, James	2		3	McL					
72	113	Lammie, Sr., William	3		N. 1/2 11	McE					
73	92	Loutis, Peter	3		24	McL					
74	134	Lawrence, Charles W.	3		N. 1/2 25	McE					
75	152	Luker, John	4		21	McL					
76	175	Luker, Richard	5		N. E. corner of W. 1/2 20	McE					
M											
77	12	Murray, James	1		6	McL					
78	25	Mitchell, Valentine	1		part north corner: 13	McE					
79	40	Moir, William	1		20	McL					
80	64	Murray, Robert	2		5 and 6	McE					
81	122	Munn, Peter	3		S. 1/2 16	McL					
82	123	Munn, John	3		N. 1/2 16	McE					
83	132	Moir, George	3		22	McL					
84	146	Mack, David	4		W. 1/2 15	McE					
Mc											
85	5	McLeod, George A. K.	1		N. 1/2 of E. 1/2 1	McL					
86	6	McLeod, James G.	1		N. 1/2 of E. 1/2 1	McE					
87	27	McLeod, George	1		5, 7 and 8	McL					
88	37	McEwan, Sr., Duncan	1		S. 1/2 18	McE					
89	38	McEwan, Jr., Duncan	1		N. 1/2 18	McL					

OF VOTERS

SUB-DIVISION No. 1,

SHIP OF HAY,

FOR THE YEAR 1875.

EXPOSITOR PRINT, SEAFORTH.

No. of Lot.	Other Description.	Concession Number.	No. on Ass. No. on Ass. No. on Roll	Name.	Concession.	No. of Lot.	Other Description.
corner 23		90	23	McEwan, William	1	19	
E. 1/4 7		91	71	McColl, Dugald	2	11	
N. 1/4 12		92	72	McColl, Daniel	2	11	
15		93	83	McEwan, Alexander	2	18	
part of 2		94	85	McEwan, John	2	19	
E. 1/4 5		95	87	McLaran, Archibald	2	122	W. 1/2
N. 1/4 21		96	88	McLaran, Alexander	2	122	E. 1/4
18		97	103	McMahon, John	3	4	
19		98	118	McGregor, Malcolm	3	13	N. 1/4
20		99	140	McDonald, James	4	9	N. 1/4
21		100	176	McIntyre, William	5	24	S. 1/4
22		101	194	McAllister, Robert	6	23	
N. 1/4 24		102	195	McAllister, John	6	24	
E. 1/4 8		103	18	McTaggart, Alfred	1	10	
				N			
3 and 4		104	104	Northcott, Sr., John	3	5	
S. 1/4 21		105	105	Northcott, Jr., John	3	7	S. 1/4
13		106	106	Northcott, William	3	7	N. 1/4
7		107	107	Northcott, Roger	2	7	
and 10				O			
14		108	86	O'Brien, William	3	9	
S. 1/4 25		109	111	O'Brien, Patrick	2	10	S. part
and 20		110	112	O'Brien, James	2	10	N. part
25		111	21	Otten, Demas	1	13	S. 1/4
N. 1/4 19		112	22	Otten, Samuel A.	4	13	S. 1/4
4		113	17	Oke, Hugh	1	9	
and 15				P			
S. 1/4 13		114	2	Pinch, Daniel	1	2	P. L.
and 17		115	32	Patterson, John	1	15	
18		116	33	Patterson, Sr., Robert	1	15	
19		117	41	Patterson, Jr., Robert	1	15	S. corner
22		118	42	Petty, George	1	21	S. 1/4
V. 1/4 20		119	94	Phillips, Elisha	2	25	N. 1/4
E. 1/4 4		120	95	Phillips, Benson	2	25	N. 1/4
W. 1/4 4				R			
and 17		121	20	Ross, Gavin	1	12	
S. 1/4 4		122	91	Rieth, William	2	23	
18		123	142	Reynolds, Richard	4	14	
19		124	177	Redmond, Richard	5	23	
22		125	181	Redmond, Charles	5	25	N. 1/4
V. 1/4 20		126	63	Russell, James	2	4	
E. 1/4 4		127	204	Rife, Joseph	7	23	
W. 1/4 4				S			
and 17		128	23	Sprague, Obed.	7		
S. 1/4 4		129	158	Spackman, John	6	6	S. 1/4 of S. 1/4
N. 1/4 13		130	139	Shnuk, Jacob H.	7	5	S. 1/4 of S. 1/4
S. 1/4 13		131	39	Swinerton, James	2	1	
S. 1/4 13		132	78	Shirray, Nichol	2	14 and 15	W. 1/4
S. 1/4 14		133	167	Sontherby, Charles	5	12	S. 1/4
E. 1/4 10		134	173	Soldan, Conrad	5	19 and 20	W. 1/4
17		135	188	Shuart, Haggai	6	16	E. 1/4
21				T			
S. 1/4 3		136	11	Tindall, Anthony	1	3	
24		137	73	Taylor, Donald	2	12	
8		138	115	Taylor, Jr., John	3	12	S. 1/4
25		139	116	Taylor, Sr., John	3	12	N. 1/4
N. 1/4 8		140	157	Troyer, Stephen	4	25	
S. 1/4 25		141	203	Troyer, Charles	7	21	
2				W			
S. 1/4 24		142	19	Whiteford, Adam	1	11	
N. 1/4 25		143	31	White, James	1	14	
23		144	47	Wilson, William	1	23	
P. L. 5		145	60	Whitelock, William	2	2	
S. 1/4 25		146	131	Wier, James	3	22	
3		147	176	Wilson, William	5	21 and 22	W. 1/4
N. 1/4 11		148	187	Wilson, Thomas J.	6	12, 14 and 16	Lots
24							
N. 1/4 25							
21							
V. 1/4 20							
6							
corner 13	Rodgerville						
20							
5 and 6							
S. 1/4 16							
N. 1/4 16							
22							
W. 1/4 15							
E. 1/4 1							
E. 1/4 1							
7 and 8	Rodg.						
S. 1/4 18							
N. 1/4 18							

LIST OF V

FOR SUB-DIVISION

TOWNSHIP C

FOR THE YEAR

Consecutive Number.	No. on Assessment Roll	Name.	Concession.	No. of Lot.	Other Description.	Consecutive Number.	No. on Assessment Roll	
A								
1	556	Alhricht, Amlau,				93	265	
2	630	Axt, Frederick,	V. S.	3, 4, 13, 14, 15 & 16	Zurich.	94	269	
B								
3	551	Bauer, Charles		Part of park	Zurich.	97	220	
4	217	Broderick, William	8	N. part 7		98	341	
5	218	Broderick, George	8	S. 1, 2		99	342	
6	234	Broderick, John	10	S. 1, 2		100	343	
7	235	Broderick, Joseph	9	E. part 11		101	344	
8	236	Broderick, Robert	9	E. part 11		102	345	
9	252	Bauer, George H.	9	W. part 20				
10	294	Bare, Henry	11					
11	299	Bechtler, Christian	11			103	340	
12	311	Bloch, Euliona	11			104	641	
13	312	Bloch, Henry	11					
14	319	Bachlin, Christian	11					
15	328	Bean, Isaac	12			105	353	
16	619	Brown, Robert	R. S.	5, 6, 7 and 8	Zurich.	106	355	
17	627	Rechtel, Amos	C. M. S.		Zurich.			
18	644	Buchanan, George, Dr.	10	W. 1/2 of E. 1/2	Zurich.	107	309	
19	637	Becker, Louis	P. L.	K. S.	Zurich.	108	607	
20	588	Brown, Jarrad	S. B.					
21	601	Ball, William	S. B.		Friedsburg.			
22	555	Becker, Louis		part of P. L. B.	Zurich.	109	576	
C								
23	586	Cook, John	S. B.		Mill Reserve	Friedsburg		
24	310	Clements, Thomas B.	8			110	112	
25	342	Cober, Solomon	9			111	591	
26	343	Cober, Jacob	9			112	616	
27	634	Croeman, Charles	V. S.	9 and 10	Zurich.			
28	585	Cook, Reinhardt	S. B.		Mill Reserve	Friedsburg.		
D								
29	624	Demuth, Justice	10	S. W. C. 20	Zurich.			
30	628	Diechart, Nicholas	V. S. 1	S. 1/2 P. 21	Zurich.	118	300	
31	650	Diechart, John	K. S.	33, 35 and 36	Zurich.	119	318	
32	638	Demich, Frederick	K. S.	7 and 8	Zurich.	120	336	
33	230	Decher, John	9	W. 1/2		121	589	
E								
34	197	Eisimbach, George	9	E. 1/2		122	590	
35	288	Eisenwather, Henry	11			123	640	
36	292	England, Adam	11	N. part 5				
37	293	Eimbaum, Samuel G.	11	S. corner 6		124	175	
38	353	Exastein, John	12			125	221	
39	375	Eienbaum, David	S. B.		3	Friedsburg.	126	229
F								
40	641	Foss, Henry	10	S. 1/2		127	230	
41	225	Foster, Nicholas	9			128	231	
42	229	Foster, Joseph	9	W. 1/2		129	245	
43	233	Foster, Samuel	9	N. part 9		130	275	
44	279	Fisher, Christopher	10	W. 1/2		131	277	
45	296	Faust, Henry O.	11			132	289	
46	316	Folland, Henry	11			133	302	
47	604	Froid, Noah	S. B.			134	313	
48	629	Faust, Daniel	V. S.			135	322	
49	357	Fenwick, William		Mill Reserve	Zurich.	136	345	
G								
50	213	Gill, Joseph	8			137	365	
51	214	Gill, John	8			138	648	
52	255	Geigher, Abraham	9			139	653	
53	259	Geigher, Peter S.	9	W. 1/2		140	654	
54	301	Gingrich, Jacob O.	10	N. 1/2		141	330	
55	308	Goodchalk, Louis	11	N. 1/2		142	328	
56	323	Gies, Henry	11			143	553	
57	329	Orill, Christian	12	S. 1/2				
58	338	Gabel, Samuel	12			144	225	
59	349	Geigher, Daniel B.	12	N. part 13		145	244	
60	343	Geigher, John B.	12			146	267	
61	284	Gallman, John	10	W. 1/2				
62	625	Galster, Servetius	B. S.	P. 4		147	583	
63	636	Grieh, Henry	K. S.	17, 18, 19 and 20	Zurich.	148	331	
64	282	Gies, Ernest	10	E. 1/2		149	332	
H								
65	191	Hanover, Elia	9	W. part 11		150	276	
66	247	Hey, Andrew	9	S. 1/2		151	232	
67	290	Hartman, John	11			152	238	
68	281	Happel, Jacob	10	E. 1/2 of E. 1/2		153	239	
69	397	Hamlin, Thomas H.	S. B.		Friedsburg.	154	249	
70	621	Hess, George	B. S.		Zurich.	155	270	
71	642	Happel, Hartman	K. S.	13, 14 and 15	Zurich.	156	271	
72	646	Hess, Frederick		S. part M. R.	Zurich.	157	272	
73	348	Hamaker, Daniel	12			158	277	
74	571	Hatch, Philip	S. B.			159	280	
75	582	Hobline, Charles	S. B.			160	298	
76	521	Hess, Christian	11	23 and 24	Friedsburg.	161	314	
I								
77	224	Iaie, Ludwig	9	W. 1/2 of S. 1/2		162	335	
78	250	Iaie, Henry	9	C. part 19		163	337	
79	317	Iaie, Frederick	B. S.		Zurich.	164	350	
J								
80	320	Johnston, Edward	11			165	351	
81	321	Johnston, Andrew	11			166	352	
82	626	Johnston, Thomas	C. M. R.		Zurich.	167	357	
K								
83	266	Krine, John	10			168	616	
84	303	Kaylor, Henry, Sr.	11			169	622	
85	306	Kaylor, Philip	11			170	631	
86	308	Kaylor, Henry, Jr.	11	N. 1/2		171	640	
87	410	Kaylor, Jacob	11	E. 1/2		172	645	
88	588	Kelly, Thomas	S. B.			173	651	
89	594	Krine, John, Jr.	S. B.			174	652	
90	344	Karber, Jacob	12			175	578	
L								
91	642	Leibold, Henry	8	W. 1/2		176	315	
92	222	Loir, Christian	8	S. W. part 12				

OF MATTERS

R SUB-DIVISION No. 2,

SHIP OF HAY,

FOR THE YEAR 1875.

No. of Lot.	Other Description.	Concession.	No. of Lot.	Other Description.
park Lot E.	Zurich.			
13, 14, 15 & 16	Zurich.			
of park L. C.	Zurich.			
N. part 7				
S. 1 & 8				
E. part 11				
W. part 20				
6				
9				
17				
17				
22				
3				
5, 6, 7 and 8	Zurich.			
R.	Zurich.			
1/2 of E. 1/2 20	Zurich.			
K. S.	Zurich.			
18				
5	Friedsburg.			
1/2 of P. L. B.	Zurich.			
Mill Reserve	Friedsburg			
3				
15				
N. part 8	Zurich.			
9 and 10	Zurich.			
Mill Reserve	Friedsburg			
S. W. C. 20	Zurich.			
S. 1/2 P. 21	Zurich.			
33, 35 and 36	Zurich.			
7 and 8	Zurich.			
W. 1/2 6				
E. 1/2 14				
2				
N. part 5				
S. corner 6				
7	Friedsburg.			
S. 1/2 19				
W. 1/2 5				
W. 1/2 15				
N. part 9				
W. 1/2 18				
7				
20	Friedsburg.			
12	Zurich.			
2	Zurich.			
Mill Reserve	Zurich.			
5				
5				
23				
W. 1/2 25				
N. 1/2 12				
N. 1/2 15				
23				
S. 1/2 4				
N. part 13				
17				
W. 1/2 24				
P. 4	Zurich.			
8, 19 and 20	Zurich.			
E. 1/2 24				
W. part 11				
S. 1/2 14				
1/2 of E. 1/2 21				
Friedsburg.				
4	Zurich.			
3, 14 and 15	Zurich.			
part M. R.	Zurich.			
20				
20				
23 and 24	Friedsburg.			
B. S.	Zurich.			
1/2 of S. 1/2 19				
C. part 19	Zurich.			
2				
23				
24	Zurich.			
R.				
5				
12				
N. 1/2 14				
E. 1/2 14				
E. 1/2 16				
14				
21				
18				
W. 1/2 16				
W. part 12				

Concession Number.	No. on A. & B. & Grant Roll	Name.	Concession.	No. of Lot.	Other Description.
93	255	Livergood, Daniel	10	4	
94	259	Lehman, William	10	7	N. W. corner
95	273	Lehman, Daniel	10	10	
96	329	Lehman, Abraham	12	14	
M					
97	220	Martin, Solomon	8	9	
98	341	Mellick, Justice	12	15	N. E. part
99	342	Mellick, John	12	16	
100	643	Moritz, John F.	11	21	part lot 21
101	384	Miller, Joshua	S. B.	14	Zurich.
102	588	Mills, Robert	V. S.	12	Zurich.
Mc					
103	340	McKie, William	12	15	N. E. part
104	641	McAnn, Henry	K. S.	12	Zurich.
N					
105	353	Nicholson, Robert	12	25	
106	355	Nicholson, Michael, Sr.	12	25	
O					
107	309	Otto, Henry	11	16	W. 1/2
108	607	Ochel, Jacob	13	3	1/2 of S. 1/2
P					
109	576	Pummel, William	S. B.	4	Friedsburg.
110	112	Page, James	8	4	
111	591	Pfaff, Conrad	S. B.	20	S. E. corner
112	616	Prang, John	B. S.	1	Zurich.
R					
113	237	Rannie, Samuel	9	12	10 and
114	241	Rickhiel, John	9	14	N. 1/2
115	244	Rosler, Jacob	10	3	
116	274	Rosenberger, Abraham	10	11	
117	278	Rickhiel, John F.	10	17	
118	300	Ragier, Jacob	11	10	
119	318	Ruumel, Hermon	11	21	W. part
120	436	Restmayer, Ernst	12	11	
121	589	Rosler, Philip	S. B.	19	
122	590	Reynolds, William	S. B.	17	E. 1/2
123	649	Rosling, Justice	K. S.	37	32 and
S					
124	175	Smith, Wendel	8	7	N. part
125	221	Shopp, Nicholas	8	12	S. W. part
126	229	Shaffer, Daniel	9	5	E. 1/2
127	230	Shaffer, Frederick	9	6	E. 1/2
128	231	Smith, Adam	9	7	S. 1/2
129	245	Shreader, Christian	9	17	S. part
130	275	Steuchter, Jacob G.	10	13	
131	277	Schwalm, William	11	14	
132	280	Sachs, Adam	10	3	
133	302	Shantz, Christian	11	11	
134	313	Surarus, Isaac	11	18	
135	322	Smith, Joseph	11	25	
136	345	Surarus, Daniel	12	19	
137	535	Suehl, William	S. B.	22	
138	647	Shuttler, John F.	K. S.	18	17 and
139	648	Steinhach, Daniel	K. S.	38	21, 22, 35 and
140	653	Shantz, Abraham B.	K. S.	11	P. L. 11
141	330	Shelling, John G.	12	4	Zurich.
142	628	Stiel, Louis	V. S.	4	S. 1/2
143	553	Schnuder, Henry	V. S.	65	64 and
T					
144	225	Thaler, Adam	9	3	
145	244	Trimner, John Just	9	16	
146	267	Trimner, Justice	10	6	
V					
147	583	Volker, William	S. B.	25	22 and
148	331	Volker, Henry	12	5	Friedsburg.
149	332	Volker, John	12	5	
W					
150	276	Wright, John	12	8	
151	232	Warner, Samuel R.	9	7	N. 1/2
152	238	Whitmer, Christian	9	13	S. 1/2
153	239	Whitmer, George	9	13	N. 1/2
154	249	Wells, Jacob	9	19	S. part
155	270	Wideman, Henry, Sr.	10	17	N. 1/2
156	271	Wideman, Henry, Jr.	10	8	
157	272	Wideman, Jacob	10	9	
158	277	Walper, Abel	10	20	E. 1/2 of E. 1/2
159	280	Weimer, Charles	10	15	
160	298	Walper, Conrad	11	8	
161	314	Wurm, Mathias	11	19	N. 1/2
162	335	Walper, Louis	12	9	
163	337	Walper, Henry	12	12	
164	330	Wilson, Charles	12	22	
165	351	Wilson, George, Sr.	12	22	
166	352	Wilson, George, Jr.	12	23	
167	357	Wildfang, Daniel	S. B.	16	
168	618	Weil, Hermon	B. S.	3	Zurich.
169	622	Weslock, Henry	B. S.	10	Zurich.
170	631	Wagner, Conrad F.	V. S.	8	5 and
171	640	Wilson, William G.	part of M. R.		Zurich.
172	645	Wideman, John C.	K. S.	16	Zurich.
173	651	Whitmer, Asaelom	K. S.	19	Zurich.
174	652	Weil, Peter	K. S.	23	21, 22 and
175	578	Willatt, John	S. B.	18	17 and
176	315	Wurm, Henry	11	19	Friedsburg.
Z					
177	215	Zeller, Michael	8	6	W. 1/2
178	258	Zeller, Daniel, Sr.	9	24	
179	301	Zimmerman, Christian	11	13	
180	632	Zimmerman, Henry	V. S.	23	7 and part
181	207	Zettel, Joseph	9	22	N. 1/2

LIST OF V

FOR SUB-DIVISION

TOWNSHIP C

FOR THE YEAR

Consecutive Number.	No. on Assessor's Roll	Name.	Concession.	No. of Lots.	Other Description.	Consecutive Number.	No. on Assessor's Roll
A							
1	384	Appleman, Justico	L. L. E.	27		87	661 P
B							
2	364	Becker, John W.	13	S. 4 9		39	387 Q
3	179	Bonnett, Christian	12	22			
4	386	Birk, Yokam	14	N. 4 3		90	367 R
5	393	Bendor, Michael	14	10		91	400 R
6	414	Bender, John D.	14	N. part 24		92	320 R
7	421	Bender, Henry	15	S. 4 3			
8	441	Brown, Ralph	15	centro part 17			
9	442	Brown, Robert	14	W. 1 17		93	511 S
10	361	Brodrick, William	L. R. W.	L. S. 4 8		94	462 S
11	369	Buoman, Emmanuel	L. R. W.	parts of 7 and 8		95	361 S
12	364	Bunho, Louis	L. R. W.	S. 4 10		96	403 S
13	368	Boller, Henry	L. R. W.	13 and 14		97	412 S
14	370	Brisson, John	L. R. W.	19		98	424 S
15	372	Bulloy, Richard B.	L. R. W.	24		99	426 S
16	367	Betchen, Godlabe	L. R. E.	S. 4 7		100	429 S
C							
17	446	Curvoo, Oliver	L. R. W.	N. 4 of S. 4 6		101	430 S
18	375	Colucky, John	13	29		102	434 S
19	389	Countz, Jacob	14	W. part 5		103	439 S
D							
20	369	Dirstien, Henry V.	12	N. W. part 15, part 14 on Con. 13		104	513 S
21	394	Decher, Lawrence	14	N. 4 8		105	522 S
22	365	Duscharm, Martin	L. R. E.	S. 4 of S. 4 6		106	524 S
23	369	Dinony, Louis	L. R. E.	S. 4 of N. 4 9		107	527 S
24	362	Duscharm, David	L. R. W.	N. part 9		108	531 S
25	363	Duscharm, John	L. R. W.	N. 4 10		109	613 S
E							
26	462	Eichler, Christina	14	N. 4 14		110	615 S
27	433	Edgehoffer, George	15	S. 4 12		111	405 S
F							
28	339	Foss, Folwath	14	E. part 16		112	363 T
29	374	Fulton, Robert	L. R. W.	28		113	427 T
G							
30	419	Gravell, Silvers	L. R. E.	N. 4 7		114	443 T
31	369	Greybiel, John	13	N. 4 of S. 4 9		115	518 T
32	399	Geiger, Gottlabe	14	14		116	519 T
33	401	Gosho, John	14	parts 13 and 14		117	536 T
34	404	Gosho, Andrew	14	16		118	537 T
35	506	Gravell, Eadoro	L. R. E.	N. 4 7		119	548 T
36	329	Groff, Henry	L. R. E.	W. part 22		120	572 T
37	357	Graton, Charles	L. R. W.	N. 4 7		121	575 T
38	358	Graton, Cyrns	L. R. W.	N. 4 7		122	612 T
39	359	Graton, Gregor	L. R. W.	N. 4 6			
40	335	Grove, Andrew	L. R. E.	27		123	365 V
H							
41	362	Hedrick, Frederick	13	E. 4 of E. 4 5		124	371 V
42	396	Hank, John	14	W. 4 17		125	368 V
43	406	Honor, Jacob	14	E. 4 17		126	388 V
44	409	Howard, Bartlett	14	E. 4 of E. 4 21		127	413 V
46	422	Hoffman, Henry	15	S. 4 4		128	423 V
46	444	Hortman, Simeou	15	parts 21 and 22		129	431 V
47	316	Heyrouk, Henry	L. R. E.	12		130	532 V
48	321	Hibbsacker, Frederick	L. R. E.	S. W. part 13		131	568 V
49	326	Hartman, John	L. R. E.	20		132	611 V
50	330	Henricks, Samuel	L. R. E.	23			
51	614	Howden, James	S. B.	29		133	366 Z
J							
52	523	Jacobs, John	L. R. E.	N. 4 19		134	377 Z
53	524	Jannicaon, Robert	L. R. E.	S. 4 19			
K							
54	411	Kalbfleisch, John C.	15	S. part 24			
55	391	Klentsfield, John	14	N. 4 6			
56	410	Knorr, Daniel	L. R. E.	W. 4 22			
57	415	Kalbfleisch, Henry	14	W. 4 25			
58	432	Kruger, John	15	E. part 11			
59	436	Kercher, Michael	15	15			
L							
60	407	Linge, Henry	14	N. 4 19			
61	440	Lindelfield, Jacob	L. R. E.	E. part 14			
62	508	Laporto, Peter	L. B. E.	N. 4 of N. 4 8			
63	397	Ling, John	14	S. 4 12			
64	301	Laframer, Moses	L. R. W.	S. 4 10			
M							
65	372	Murner, Gottlabe	13	S. 17			
66	390	Millar, Christopher	14	W. 4 of S. 4 6			
67	393	Millar, Conrad	14	parts 7 and 8			
68	408	Moore, Robert	14	E. 4 20			
69	411	Millar, Louis	14	S. 4 22			
70	425	Millar, Christian W.	15	6			
71	428	Millar, Robert	15	S. 4 9			
72	488	Mellick, John, Jr.	15	E. part 16			
73	445	Millar, Adam	15	N. 4 of S. 4 24			
74	511	Moss, Peter	L. R. E.	S. part 9			
75	574	Mayer, Joseph	L. R. E.	W. 4 10			
76	377	Mitchell, John	L. R. W.	32			
N							
77	380	Nicholson, Thomas	13	23			
78	381	Nicholson, Godfrey	13	24			
79	571	Nicol, John	L. R. W.	20			
O							
80	370	Ortwine, Henry	13	N. and ct. part 14			
81	373	Oswald, Jr., Christian	13	S. 4 19			
82	374	Oswald, Sr., Christian	13	S. 4 19			
83	369	O'Brien, Rowell	L. R. W.	18			
P							
84	398	Pille, Henry	14	N. 4 12			
85	340	Pastor, Peter	L. R. E.	30			
86	376	Pullock, John	L. R. W.	29, 30 and 31			

OF VOTERS

R SUB-DIVISION, No. 3,

SHIP OF HAY,

FOR THE YEAR 1875.

No. of Lot.	Other Description.	Consecutive Number.	No. on Assessor's Roll.	Name.	Concession.	No. of Lot.	Other Description.
27		87	661	Maff, Henry	16		5
		88	473	Pastor, Jacob	L. R. E.		30
				Q			
		89	387	Quant, Hermon	14		S. 4 4
				R			
		90	367	Ruby, Jacob	13		13
		91	400	Ruby, David	14		S. 4 13
		92	520	Rogan, Francis	L. R. E. N. and W. pts		15
				S			
		93	511	Sibold, Adam	L. R. W.		25
		94	462	Sinch, George	14		W. 1 20
		95	361	Shreuder, Frederick	13		S. 4 4
		96	403	Shlechter, Jacob	14		13
		97	412	Shelby, Henry	14		S. 4 23
		98	424	Sachs, Daniel	15		5
		99	426	Shoemaker, John	15		7
		100	429	Shelby, Christian	15		S. 4 of N. 4 9
		101	430	Semon, George	15		N. 4 of N. 4 9
		102	434	Shatz, Jacob	15		13
		103	439	Schooch, Christian	15		W. part 16
		104	513	Spencer, David	L. R. E.		S. 4 14
		105	522	Surarus, David	L. R. E.		W. part 16
		106	524	Sillar, Duncan	L. R. E.		N. 4 21
		107	527	Sillar, Alexander	L. R. E.		S. 4 21
		108	531	Shodde, John	L. R. E.		26
		109	613	Shreuder, August D.	S. R.		W. 1 28
		110	615	Shreuder, Jacob	S. R.		S. 4 31
		111	405	Steinbach, Henry	14		W. part 21
				T			
		112	363	Thou, Jacob	13		6
		113	427	Teaman, William	15		8
		114	443	Trimmer, Wiegand	15		18
		115	518	Trefly, Samuel	L. R. E. W. part of N.		14
		116	519	Trefly, Robert	L. R. E. W. part of S.		4 13
		117	536	Turnbull, George	L. R. E.		S. 4 28
		118	537	Turnbull, Thomas	L. R. E.		29
		119	538	Turnbull, Robert	L. R. E.		S. part 28
		120	572	Taylor, James	L. R. W.		21 and 22
		121	575	Turnbull, William	L. R. W.		27 and part 28
		122	612	Thompson, Smithson	S. R.		27
				W			
		123	365	Walper, John	13		10
		124	371	Wing, William	13		16
		125	368	Wambold, Abram	13		N. W. corner 14
		126	388	Waggoner, Conrad	14		N. 4 14
		127	413	Weber, Casper	14		N. 4 21
		128	423	Waggoner, Justice	15		N. 4 4
		129	431	Weber, Conrad	15		10
		130	532	Woods, Henry	L. R. E.		25
		131	568	Wilson, William S.	L. R. W.		16 and 17
		132	611	Willert, Christopher	S. R.		centre part 26
				Z			
		133	366	Zimmer, John	13		12
		134	377	Zellar, Michael	13		21

LIST OF VOTERS

FOR SUB-DIVISION

TOWNSHIP OF

FOR THE YEAR 1878

Consecutive Number.	No. on Assessment Roll	Name.	Concession.	% of Lot.	Other Description.	Consecutive Number.	No. on Assessment Roll	Name.
A								
1	457	Anderson, Robert	N. B.	W. 1/4 of E. 1/7		85	481	Quigley, J.
2	487	Allan, John	N. B.	W. part 24		91	183	Stuck, J.
3	491	Han, Robert	N. B.			93	455	Slater, M.
4	483	Adair, Robert	N. B.	E. part of W. 1/4 24		86	196	Gieshart
5	490	Agnew, Henry	N. B.	W. part 29		87	471	Hitz, J.
B								
6	57	Hair, William	1		S. W. 30	88	261	Bothorn
7	159	Hell, Robert	4			89	634	Haster, J.
8	160	Bery, John	4		N. 1/4 27	90	182	Stuck, J.
9	290	Bauer, Henry	2		W. part 26	91	208	Shaffer, J.
10	549	Badie, Joseph	L. R. W.		N. 1/3	92	448	Stuck, J.
11	550	Badie, Maxime	N. B.		part 21	97	359	Swatzen
12	551	Belour, Simeon	L. R. W.		N. 1/4	100	47	Shaffer, J.
13	643	Bender, Peter	N. B.		E. part 24	101	167	Shaffer, J.
C								
14	456	Cochrane, John, Jr.	N. B.	E. 1/4 of E. 1/7		102	168	Shaffer, J.
15	458	Cochrane, John, S.	N. B.	W. 1/7		103	620	Styles, J.
16	459	Cochrane, James	N. B.	W. 1/8		104	645	Smith, J.
17	554	Conteng, Archley	L. R. W.		E. part 5	105	413	Schwalm
18	553	Conteng, Peter	L. R. W.		N. part 5	106	412	Swartzen
D								
19	54	Doig, Paul	1			107	52	Thompson
20	55	Doig, Robert	1			108	97	Thompson
21	632	Dunmore, John	N. B.		E. 1/2 27	109	135	Thompson
22	137	Dick, Thomas	3			110	136	Thompson
23	472	Dunmore, John	N. B.			141	209	Troyer, C.
24	477	Douglas, Alexander	N. B.			T		
25	501	Diggardus, Julius	L. R. E.		N. and E. pts 4 5	107	52	Thompson
26	503	Diomy, Alexander	L. R. E.		S. 1/4 of S. 1/5	108	97	Thompson
27	541	Diacharin, Eli	L. R. W.		N. 1/1	109	135	Thompson
28	548	Diggardus, Sidrech	L. R. W.		S. 1/2	110	136	Thompson
29	552	Diomy, George	L. R. W.		S. 1/4	141	209	Troyer, C.
30	555	Diomy, Redges	L. R. W.		S. 1/3	W		
31	190	Daniels, James	2			112	96	Warring
32	383	Dietz, Henry A.	13			143	266	Walper, C.
33	556	Diomy, Norbin	L. R. E.		N. 1/5	114	474	Weimer, J.
E								
34	158	Easy, Thomas	4			115	475	Wagner, J.
35	483	Erwin, William	N. B.		part N. E. 1/4 24	116	263	Willart, J.
F								
36	324	Fee, Walter	11			117	543	Wilkt, J.
37	323	Fee, Edward	11			X		
G								
38	482	Gnereau, Hyacinth	L. R. W.		part 2	Y		
39	161	Grenslade, George	4		24	Z		
H								
40	198	Houlden, James	6			1		
41	450	Hanson, Walter	N. B.		E. 1/3	2		
42	452	Hollingshead, Henry	N. B.		E. 1/4	3		
43	453	Hollingshead, William	N. B.		W. 1/4	4		
44	460	Hirnonimous, William	N. B.			5		
45	462	Hill, William	N. B.			6		
46	468	Hagan, James	N. B.		S. 1/2 12	7		
47	478	Hosettler, David	N. B.			8		
48	446	Hoss, Andrew	15		N. 1/2 26	9		
49	487	Hess, George	N. B.		part N. corner 24	10		
50	490	Hunter, John	N. B.			11		
51	494	Howard, John	N. B.		E. 1/2 29	12		
I								
52	508	Irwin, Joseph	N. B.		part 11	13		
53	449	Ivson, William	N. B.			14		
J								
54	492	Johnston, Thomas A.	N. B.			15		
55	385	Johnston, William	13			16		
K								
56	357	Kipfer, Andrew	12		S. part 27	17		
L								
57	461	Love, Hugh, Sr.	N. B.			18		
58	502	Laporte, Joseph	L. R. E.		S. 1/4 of S. 1/5	19		
59	506	Logan, William	N. B.		part 11	20		
60	625	Leslie, John	N. B.		part 24	21		
M								
61	542	Mosseau, Alex.	L. R. W.		N. 1/4 of S. 1/1	22		
62	607	Maxwell, John	N. B.		part 11	23		
63	498	Mosseau, Oliver	N. B.		N. 1/2 30	24		
64	356	Maidrew, John	12			25		
65	488	Mitchell, Allan	N. B.		part 24	26		
Mc								
66	53	McMordie, Robert	1			27		
67	199	McAllister, Alex.	6			28		
68	481	McMurtrie, John	N. B.		W. 1/3	29		
69	484	McKay, David	N. B.		part 24	30		
N								
70	287	Nashwanger, John	10		E. 1/2 27	31		
O								
71	644	Oesch, Joseph	15		N. 1/2 27	32		
72	327	Oesch, Menno	11		E. part 28	33		
73	384	Oesch, John	13			34		
74	419	Oesch, Jacob	14		N. 1/2 27	35		
75	358	Oesch, Rudolph	12		part 28	36		
P								
76	98	Petty, John	2		S. 1/2 27	37		
77	99	Petty, Henry John	2		N. 1/2 28	38		
78	101	Petty, James	2			39		
79	262	Pfaff, Henry S.	9		S. 1/2 28	40		
80	476	Percy, Thomas	N. B.			41		
81	497	Papineau, John	N. B.		N. 1/30	42		
82	500	Polock, James	L. R. E.			43		
83	544	Papineau, John	L. R. W.		N. 1/2	44		
84	547	Papineau, Joseph	L. R. W.		S. 1/4 of N. 1/2	45		

J. Hugh Love, Sr.,
County of Huron, do
appearing by the Asses-
sors, entitled to vote
the Province of Ontar-
io. And I further certify
office on the sixth day
And I hereby call at-
tentions or other errors at
the said errors correcte
Dated August 6, 1878

LIST OF VOTERS

SUB-DIVISION No. 4.

TOWNSHIP OF HAY, FOR THE YEAR 1875.

Concession No.	Name	Concession	Other Description
Q			
85	481 Quigley, Hugh	N. B.	part 24 Berne.
R			
86	186 Risehart, Henry	5	28
87	171 Ritz, John	N. B.	W. 4 of W. 4 16
88	261 Rothermill, Peter D.	9	S. part 27
89	634 Rasler, Vincent	N. E.	28
S			
90	182 Stilek, Claus	5	26
91	183 Stilek, David	5	27
92	208 Shaffer, Henry	7	W. parts 26 and 27
93	455 Slater, William	N. B.	5
94	470 Smith, Hugh	N. B.	13
95	473 Shoemaker, Charles	N. B.	E. 4 of E. 4 18
96	420 Shnell, John H.	14	28
97	447 Smith, Andrew	15	N. 4 26
98	448 Stilek, Henry John	15	28
99	539 Swatzenruber, Christian	12	N. part 28
100	47 Shaffer, Henry	1	part 30
101	167 Shaffer, Noah	7	E. 1 26 and 27
102	168 Shaffer, Edward	7	E. 1 26 and 27
103	620 Stiles, James	N. B.	23
104	645 Smith, Adam	N. B.	part 24
105	413 Schwalm, William	14	S. 1 27
106	412 Swartzenruber, John	14	W. 1 26
T			
107	52 Thompson, Jr., George	1	part 27
108	97 Thompson, Robert	2	W. 1 26
109	135 Thompson, Sr., George	3	26
110	136 Thompson, Samuel	3	27
111	209 Troyer, John	7	28
W			
112	96 Warring, Richard	2	
113	256 Walper, William	10	
114	474 Weiner, Joseph	N. B.	
115	475 Wagner, Conrad	N. B.	
116	263 Willart, Henry	9	
117	543 Willart, Joseph F.	L. R. W.	

I, Hugh Love, Sr., Clerk of the Municipality of the Township of Hay, in the County of Huron, do certify that the foregoing list is a correct list of all persons appearing by the Assessment Roll of the said Municipality of Hay, for the year 1875, entitled to vote at elections for members of the Legislative Assembly of the Province of Ontario.

And I further certify that a copy of the foregoing list was first posted up in my office on the sixth day of August, 1875.

And I hereby call upon all electors to examine the said list, and, if any omissions or other errors are perceived therein, to take immediate proceedings to have the said errors corrected according to law.

Dated August 6, 1875.

HUGH LOVE, Sr.,
Township Clerk.

