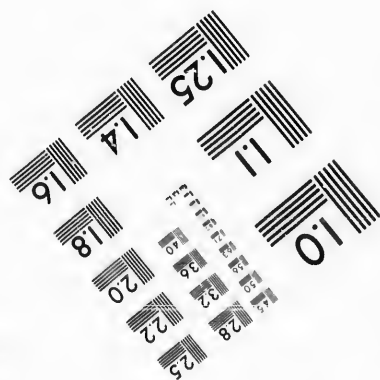
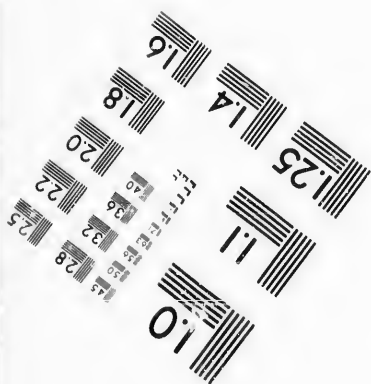
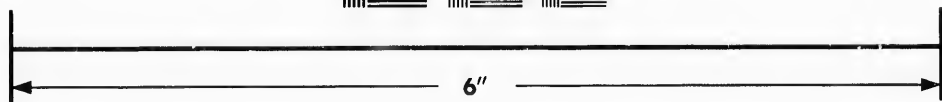
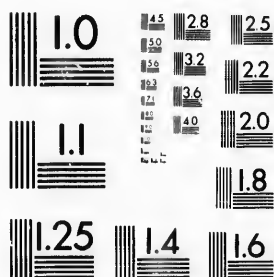


**IMAGE EVALUATION
TEST TARGET (MT-3)**



**Photographic
Sciences
Corporation**

23 WEST MAIN STREET
WEBSTER, N.Y. 14580
(716) 872-4503

15
16
18
19
20
22
25

**CIHM/ICMH
Microfiche
Series.**

**CIHM/ICMH
Collection de
microfiches.**



Canadian Institute for Historical Microreproductions / Institut canadien de microreproductions historiques

10
11
12
13
14

© 1987

Technical and Bibliographic Notes/Notes techniques et bibliographiques

The Institute has attempted to obtain the best original copy available for filming. Features of this copy which may be bibliographically unique, which may alter any of the images in the reproduction, or which may significantly change the usual method of filming, are checked below.

L'Institut a microfilmé le meilleur exemplaire qu'il lui a été possible de se procurer. Les détails de cet exemplaire qui sont peut-être uniques du point de vue bibliographique, qui peuvent modifier une image reproduite, ou qui peuvent exiger une modification dans la méthode normale de filmage sont indiqués ci-dessous.

- Coloured covers/
Couverture de couleur
- Covers damaged/
Couverture endommagée
- Covers restored and/or laminated/
Couverture restaurée et/ou pelliculée
- Cover title missing/
Le titre de couverture manque
- Coloured maps/
Cartes géographiques en couleur
- Coloured ink (i.e. other than blue or black)/
Encre de couleur (i.e. autre que bleue ou noire)
- Coloured plates and/or illustrations/
Planches et/ou illustrations en couleur
- Bound with other material/
Relié avec d'autres documents
- Tight binding may cause shadows or distortion
along interior margin/
La reliure serrée peut causer de l'ombre ou de la
distorsion le long de la marge intérieure
- Blank leaves added during restoration may
appear within the text. Whenever possible, these
have been omitted from filming/
Il se peut que certaines pages blanches ajoutées
lors d'une restauration apparaissent dans le texte,
mais, lorsque cela était possible, ces pages n'ont
pas été filmées.
- Additional comments:/
Commentaires supplémentaires:

- Coloured pages/
Pages de couleur
- Pages damaged/
Pages endommagées
- Pages restored and/or laminated/
Pages restaurées et/ou pelliculées
- Pages discoloured, stained or foxed/
Pages décolorées, tachetées ou piquées
- Pages detached/
Pages détachées
- Showthrough/
Transparence
- Quality of print varies/
Qualité inégale de l'impression
- Includes supplementary material/
Comprend du matériel supplémentaire
- Only edition available/
Seule édition disponible
- Pages wholly or partially obscured by errata
slips, tissues, etc., have been refilmed to
ensure the best possible image/
Les pages totalement ou partiellement
obscurcies par un feuillet d'errata, une pelure,
etc., ont été filmées à nouveau de façon à
obtenir la meilleure image possible.

This item is filmed at the reduction ratio checked below/
Ce document est filmé au taux de réduction indiqué ci-dessous.

10X	14X	18X	22X	26X	30X
<input type="checkbox"/>	<input type="checkbox"/>	<input type="checkbox"/>	<input checked="" type="checkbox"/>	<input type="checkbox"/>	<input type="checkbox"/>
12X	16X	20X	24X	28X	32X

The copy filmed here has been reproduced thanks to the generosity of:

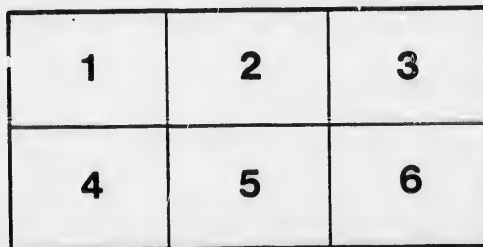
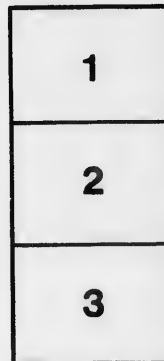
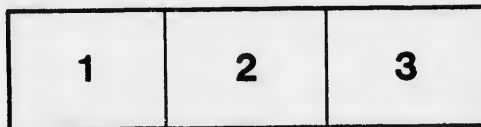
D. B. Weldon Library
University of Western Ontario
(Regional History Room)

The images appearing here are the best quality possible considering the condition and legibility of the original copy and in keeping with the filming contract specifications.

Original copies in printed paper covers are filmed beginning with the front cover and ending on the last page with a printed or illustrated impression, or the back cover when appropriate. All other original copies are filmed beginning on the first page with a printed or illustrated impression, and ending on the last page with a printed or illustrated impression.

The last recorded frame on each microfiche shall contain the symbol \rightarrow (meaning "CONTINUED"), or the symbol ∇ (meaning "END"), whichever applies.

Maps, plates, charts, etc., may be filmed at different reduction ratios. Those too large to be entirely included in one exposure are filmed beginning in the upper left hand corner, left to right and top to bottom, as many frames as required. The following diagrams illustrate the method:



L'exemplaire filmé fut reproduit grâce à la générosité de:

D. B. Weldon Library
University of Western Ontario
(Regional History Room)

Les images suivantes ont été reproduites avec le plus grand soin, compte tenu de la condition et de la netteté de l'exemplaire filmé, et en conformité avec les conditions du contrat de filmage.

Les exemplaires originaux dont la couverture en papier est imprimée sont filmés en commençant par le premier plat et en terminant soit par la dernière page qui comporte une empreinte d'impression ou d'illustration, soit par le second plat, selon le cas. Tous les autres exemplaires originaux sont filmés en commençant par la première page qui comporte une empreinte d'impression ou d'illustration et en terminant par la dernière page qui comporte une telle empreinte.

Un des symboles suivants apparaîtra sur la dernière image de chaque microfiche, selon le cas: le symbole \rightarrow signifie "A SUIVRE", le symbole ∇ signifie "FIN".

Les cartes, planches, tableaux, etc., peuvent être filmés à des taux de réduction différents. Lorsque le document est trop grand pour être reproduit en un seul cliché, il est filmé à partir de l'angle supérieur gauche, de gauche à droite, et de haut en bas, en prenant le nombre d'images nécessaire. Les diagrammes suivants illustrent la méthode.

ails
du
odifier
une
mage

rrata
o

belure,
n à



32X

L

TOWNS

1894

LIST OF VOTERS

FOR THE

Township of Caradoc

FOR THE

YEAR 1894.

STRATHROY:

Printed at The Age Printing and Publishing House.
1894.

SCHEDULE OF POST OFFICES.

- | | |
|------------------|-------------------|
| 1. MT. BRYDGES. | 12. LONGWOOD. |
| 2. STRATHROY. | 13. OSMAN. |
| 3. DELAWARE. | 14. BURWELL ROAD. |
| 4. MUNCEY. | 15. LONDON. |
| 5. MELBOURNE. | 16. WINDSOR. |
| 6. CHRISTINA. | 17. BYRON. |
| 7. GLEN OAK. | 18. GUELPH. |
| 8. CAIRNGORM. | 19. TEMPO. |
| 9. AMIENS. | 20. WARDSVILLE. |
| 10. KOMOKA. | 21. GLENCOE. |
| 11. POPLAR HILL. | 22. DEROIT. |

gk *imm* 23 Middlem

mm

VOTERS' LIST 1894.

MUNICIPALITY OF CARADOC.

Polling Sub-Division No. 1.

Comprising all that portion of the Township lying East of the Side Road
between Lots 12 and 13, and South of the 1st Con.

PART 1.—Persons Entitled to Vote at BOTH Municipal Elections and Elections to the Legislative Assembly.

Jur.	No. on Roll.	NAME.	LOT.	Ccn. or Street.	Other Description.	P.O.
	31	Adams, James	pt S W cor 18	R 1 N	M F and O.	3
	23	Anderson, John D	N hf 18	R 1 S	M F and O.	3
J	129	Bateman, George	N pt 4, pt S hf 12	E M R, R 1 S	M F and O.	4
J	134	Brodie, Duncan C	pt S hf 18	R 3 S	M F and O.	14
J	141	Brodie, Hugh	E pt 6	E M R	M F and O.	14
J	128	Brodie, John	W pt 6	E M R	M F and O.	4
	140	Bateman, John T	N hf N hf 17	R 3 S	M F and O.	14
J	138	Bateman, Charles	W pt 18	R 3 S	M F and O.	14
J	139	Bateman, Melville	W pt 18	R 3 S	M F and O.	14
J	127	Bartlett, Wm	W hf S hf 17	R 1 S	M F and O.	3
J	130	Broom, Samuel	E hf 4	W M R	M F and O.	4
J	131	Burwell, Mahlon	N pt 17	R 5 S	M F and O.	14
J	135	Burwell, Geo V	pt 18	R 4 S	M F and O.	14
<i>mm</i>	133	Burwell, John M	S hf S hf 17	R 4 S	M F and O.	14
J	137	Bartlett, Jonathan	S hf 19, pt S hf 20	R 1 S	M F and O.	3
J	121	Bowman, Martin	W pt S hf 21	R 1 S	M F and T.	3

E. G.

Polling Sub-Division No. 1.

Jur.	No. on Roll.	NAME.	LOT.	Con. or Street.	Other Description.	P.O.
J	284	Clark, John G	N pt 19	R 4 S	M F and O	14
	274	Coulter, John	W hf 4	W M R	M F and O	4
J	275	Coulter, Frank	W hf 4	W M R	M F and T	4
J	273	Collins, Thomas	E hf 5	W M R	M F and O	4
J	285	Clark, Nathaniel jr	S E hf N hf 19	R 4 S	M F and O	1
J	270	Carruthers, Geo B	S hf 16, pt 15	R 1 N	M F and O	6
	271	Carruthers, Geo A	S hf 16, pt 15	R 1 N	M F & F S	6
J	272	Cox, James	6	W M R	M F and O	4
J	286	Coveny, Thos	N hf 19	R 3 S	M F and O	14
J	287	Coveny, John	S hf 17	R 3 S	M F and O	14
J	277	Cobban, Wm	S pt 3 and o p	W M R	M F and O	4
J	217	Chambers, James	pt 12	R 5 S	M F and O	4
	218	Chambers, John B	pt 12	R 5 S	M F & F S	4
J	219	Chambers, Thos	E pt N hf 5	W M R	M F and O	4
J	279	Cobban, Robert	S pt 12	E M R	M F and O	4
J	280	Clark, John N	N hf 3	E M R	M F and O	4
	281	Clark, Alex	N hf 3	E M R	M F & F S	4
	282	Clark, Nathaniel	N hf 3	E M R	M F & F S	4
	283	Clark, John	N hf 3	E M R	M F & F S	4
J	288	Clark, Edward	pt N hf 22 and 23	R 1 N	M F and O	1
J	315	Donaldson, David J	N hf 20	R 1 S	M F and O	3
	314	Daunt, George	pt N hf 20	R 1 N	M F and O	3
J	325	Davey, Emanuel	pts 18 and 19	R 1 N	M F and T	1
EE. mm's		<i>Barth William. SRT 17</i>		<i>R4S</i>	<i>M F + J</i>	<i>14</i>
	335	Erwin, George	E hf S hf 14	R 1 S	M F and O	6
	336	Erwin, Albert	E hf S hf 14	R 1 S	M F & F S	6

Polling Sub-Division No. 1.

Jur.	No. on Roll.	NAME.	LOT.	Con. or Street.	Other Description.	P.O.
J	337	Erwin, James	W hf S hf 14	R 1 S	M F and O.	6
		577 Evison, William	14 to 19, Del West	R 1 N	M F and T.	3
		<i>mm's. Evison Frank. 14 to 19 Del W R.M.</i>			<i>M F & T.</i>	<i>3 EE</i>
J	361	Fisher, Wm	N hf 20	R 1 N	M F and T.	3
J	372	Fisher, James jr	N hf 16	R 1 S	M F and T.	6
		367 Fisher, George	pt N hf 13	R 1 S	M F and O.	6
		368 Fisher, James sr	N hf 13	R 1 S	M F and O.	6
		369 Fisher, Francis	N hf 13	R 1 S	M F & F S.	6
		375 Faulds, Edward A	7	W M R.	M F & F S.	4
		373 Faulds, Thomas	7	W M R.	M F and O.	4
		374 Faulds, George M	7	W M R.	M F & F S.	4
J	379	Faulds, Wm M	2	W M R.	M F and O.	4
		376 Faulds, John F	7	W M R.	M F & F S.	4
		377 Forsythe, John	S pt 1	E M R.	M F and O.	4
		370 Fisher, James H	pt S $\frac{1}{2}$ 13	R 1 N	M F and O.	6
		<i>mm's. Forsythe Alexander. S Pt 3.</i>		<i>mm R.</i>	<i>M F & O.</i>	<i>4 EE</i>
		1257 Graham, Alex	18, 19, 20 Birm st Del W	R 1 N	M F and T.	3
J	428	Giles, John	S hf 13	R 1 S	M F and O.	6
J	380	Guest, Wm A	N hf 20	R 4 S	M F and O.	3
J	381	Guest, Henry L	N hf 20	R 4 S	M F and T.	3
J	437	Giles, Wm jr	22, 23 pt 21	R 4 S	M F and T.	3
		1255 Giles, Wm sr	3 and 4 King st Del W	R 1 N	M F and O.	3
J	438	Giles, James	22, 23 pt 21	R 4 S	M F and T.	3
J	434	Glennie, Geo. D	S hf 22	R 1 N	M F and O.	3
		435 Glennie, Gordon	S $\frac{1}{2}$ 22	R 1 N	M F & F S.	3
		436 Glennie, J W	S $\frac{1}{2}$ 22	R 1 N	M F & F S.	3

P.O.
14
4
4
4
1
6
6
4
14
4
4
4
4
4
4
4
4
4
1
3
3
1
14
6
6

EE

EE

Polling Sub-Division No. 1.

Jur.	No. on Roll.	NAME.	LOT.	Con. or Street.	Other Description.	P.O.
	483	Haws, George	S E cor N hf 22	R 1 N	M F and O.	3
J	497	Haws, John	pt 4 and 5	E M R	M F and T.	14
	498	Haws, Henry	pt 4 and 5	E M R	M F & F S.	14
J	493	Hetley, Wesley	W hf S hf 15	R 1 N	M F and O.	6
J	494	Howe, John M.	N pt 7	E M R	M F and O.	3
J	504	Howe, John F	N hf 17	R 2 S	M F and O.	3
	501	Haggerty, John sr	S hf 20 and o p	R 4 S	M F and O.	14
J	499	Haggerty, George	S hf 20 and o p	R 4 S	M F and O.	14
	500	Haggerty, Swanton	S hf 20 and o p	R 4 S	M F & F S.	14
J	1254	Haws, Samuel	A st 12,13,14 and o p Del W.	R 1 N	M F and O.	3
J	503	Haggerty, John jr	pt N hf 18	W M R	M F and T.	14
J	516	James, Henry	S W cor S $\frac{1}{2}$ 20 & o p.	R 1 N	M F and O.	3
J	519	Jenkins, Alfred	E pt S hf 17	R 1 S	M F and O.	3
	515	Jones, Edwin	Bkn Ft 20	R 5 S	M F and O.	14
J	518	Jarmain, Henry jr	N hf 20	R 2 S	M F and O.	3
J	538	Kershaw, Charles	N W pt N $\frac{1}{2}$ 19	R 1 S	M F and O.	3
	540	King, Thomas	S cor S hf 17	R 2 S	M F and O.	3
	541	King, Wm T.	S cor S hf 17	R 2 S	M F and T.	3
	1258	Lewis, John	Birm st 21,22,23, Del W	R I N	M F and O.	3
	566	Lowthian, Richard	W pt N hf 22	R 1 N	M F and O.	3
J	567	Lowthian, Rich V	pt 23	R 1 N	M F and O.	3
J	575	Lockwood, Henry jr	S pt N $\frac{1}{2}$ 20 & o p	R 1 S, R 1 N	M F and O.	3
	576	Lockwood, Daniel B	S pt N $\frac{1}{2}$ 20 & o p	R 1 S, R 1 N	M F & F S.	3

Polling Sub-Division No. 1.

Con. or Street.	Other Description.	P.O.	Jur.	No. on Roll.	NAME.	LOT.
R 1 N	M F and O	3	J	570	Lockwood, Chas H.	S hf 21
R 1 N	M F and O	3	J	574	Lockwood, Wm W.	pt S hf 20
R 1 S, R 1 N	M F and O	3	J	578	Luce, Asa	pt 17
R 1 S, R 1 N	M F & F S	3	J	579	Luce, George	pt 17
R 1 S, R 1 N	M F & F S	3	J	580	Luce, Alfred	pt 17
R 1 S	M F and O	6	J	584	Lockwood, John A	N hf 15
R 1 S	M F and T	3	J	587	Langfield, Wm H	24
E M R	M F and O	4	J	582	Laing, James	2
R 1 N	M F and O	3	J	1259	Lockwood, Henry sr.	.9 to 13 K st, Del W
					<i>mm Lewis Charles.</i>	<i>12</i>
						<i>R 5 S</i>
						<i>M F & Y 4</i>
						<i>Ellis</i>
R 1 N	M F and O	6	J	709	McKenzie, John	S W cor S hf 13
W M R	M F and O	4	J	711	McGregor, Peter	pt 1 and D
W M R	M F and O	4	J	715	McIntyre, Dugald	pt 12
R 5 S	M F and O	4	J	716	McGregor, Alex	pt 12
W M R	M F and O	4	J	712	McGregor, Thos	pt D
W M R	M F and O	4	J	714	McGregor, John jr	S pt D
R 1 N	M F and O	3	J	1256	McFee, Alex	Birst 18,19,20 Del W
R 4 S	M F and T	14	J	718	McDonald, Wm	pt 21
R 4 S	M F and T	14	J	719	McDonald, Thos	pt 21
R 1 S	M F and T	3	J	710	McKellar, Arch	S 1/4 16
R 1 N	M F and O	3	J	744	Nagle, John	S pt 19
R 1 S	M F and O	3	J	745	Nagle, Walter	E hf N hf 17
R 1 S	M F and O	6	J	739	Nash, Ephraim	N hf 14
R 1 S	M F & F S	6	J	740	Nash, Franklin E	N hf 14
R 1 S	M F and O	3	J	742	Nagle, Robert	S hf 18

Folling Sub-Division No. 1.

Jur.	No. on Roll.	NAME.	LOT.	Con. or Street.	Other Description.	P.O
	743	Nagle, Francis E.....	S hf 18	R 1 S	M F & F S..	3
J	746	Nagle, Samuel.....	N pt 3	W M R	M F and O .	4
	1260	Nagle, Thomas.. ..	K st 1 and 2 Del W..	R 1 N	M F and O..	3
	585	Nevels, Ezekiel	pt N hf 15	R 1 N	M F and T..	3
J	756	Orr, Rowland	W pt N hf 5	W M R	M F and O..	6
J	807	Pulling, James.....	W hf S hf 18	R 2 S	M F and O..	14
J	809	Pulling, Henry.....	pt S hf S hf 17.....	R 2 S	M F and O..	14
	808	Pulling, Charles ...	W hf S hf 18	R 2 S	M F & F S .	14
	1295	Portsmouth, Peter ..	26 and o p Del W ..	R 1 N	M F and T..	3
	1266	Portsmouth, Rich ...	26 and o p Del W ..	R 1 N	M F and T..	3
	1267	Portsmouth, A E.....	26 and o p Del W ..	R 1 N	M F and T..	3
J	806	Price, Richard J.....	S hf 8 and o p.....	W M R	M F and T..	1
J	1263	Penfold, Henry	pt 23, 24 and o p.....	R 1 N	M F and O..	3
	1262	Pulling, Wm	Sewel lot & 6,7, Del W.	R 1 N	M F and O..	3
	1261	Perkins, Levi	5 K st Del W	R 1 N	M F and O .	3
		<i>Wk. mmd Penfold Joseph. 23 & 24</i>		<i>R1N</i>	<i>M F & F S.</i>	<i>3</i>
J	851	Reep, Wm sr	N W pt 20	R 3 S	M F and O .	3
J	852	Reep, Wm jr	N W pt 20	R 3 S	M F and T..	3
J	853	Reep, John	N W pt 20	R 3 S	M F and T..	3
J	838	Kockey, Wm H	pt gore 20 and 21 ..	R 1 N	M F and O .	1
J	847	Robinson, Robt	W hf 5	E M R.....	M F and O..	4
	848	Robinson, Robt E ...	W hf 5.....	E M R.....	M F & F S..	4
J	849	Reily, John D	E hf S hf 19	R 2 S	M F and O..	3
J	850	Reily, Wm H	W hf S hf 19, pt 18 ..	R 2 S	M F and O .	14

Polling Sub-Division No. 1.

Jur.	No. on Roll.	NAME.	LOT.	Con. or Street.	Other Description.	P.O.
J	855	Reily, Wm J	pt blk A	E M R	M F and T	14
J	856	Reily, Robt H	pt blk A	E M R	M F and T	14
J	276	Robinson, George	W hf 4	W M R	M F and T	4
J	948	Seabrook, Sidney	22,23, pt 21	R I S	M F and O	3
J	933	Stiltz, Charles	E hf N hf 19	R I N	M F and O	3
	947	Smith, Robert	pt S hf 13	R I N	M F and O	6
J	945	Shaw, Wm	W hf S hf 15	R 1 S	M F and T	6
J	953	Sweeney, John	S pt 12 and o p	R 5 S	M F and O	3
J	951	Smith, Arthur G	pt 12	R 5 S	M F and T	4
J	954	Stover, Peter	E pt N $\frac{1}{2}$ 13	R 1 N	M F and T	6
J	995	Thompson, Thos	S hf 14	R 1 N	M F and O	6
J	997	Toles, Peter	E pt S hf 18 and o p	R 1 N	M F and O	1
	1001	Tull, Samuel	S hf 13	R 1 N	M F and O	6
	1002	Tull, David	S hf 13	R 1 N	M F & F S	6
J	1007	Tull, John	N hf S hf 17 and o p	R 2 S	M F and O	1
J	1006	Thomas, Joseph	S W pt 21	R 2 S	M F and T	3
	1268	Vrooman, John	8 Del W	R 1 N	M F and O	3
	1011	Vennor, John	pt 1	E M R	M F and O	4
J	1010	Vail, John	pt N hf 14	R 1 N	M F and O	6
J	1108	Weld, Octavus	S hf 20	R 2 S	M F and O	3
	1109	Waters, Wm H	N W cor N hf 18	R 1 N	M F and O	1
	1098	Whiting, James W	N pt E hf 4	E M R	M F and O	14

Jur.	No. on Roll.	NAME.	LOT.	Con. or Street.	Other Description.	P.O.
	1099	Whiting, Wm C JN pt E hf 4.	E M R	M F & F S	14
J	1091	Williamson, JohnE hf S hf 15.	R i S	M F and O	6
J	1096	Whiting, Wm Bpt 1.	W M R	M F and O	4
	1097	Whiting, Wm Fpt 1	W M R	M F & F S	4
J	1101	Walker, BartonE hf 5	E M R	M F and O	14
	1103	Walker, ArchE hf 5	E M R	M F & F S	14
J	1104	Wrightman, JamesN hf 17	R 4 S	M F and O	14
	1105	Wrightman, WilliamN hf 17	R 4 S	M F & F S	14
J	1095	Waters, ArchibaldW pt N hf 18	R 1 N	M F and O	1
	1076	West, Wm TN cor N hf 22	R 1 N	M F and O	3
J	1102	Walker, John SE hf 5	E M R	M F and T	14
J	779	Weld, Henry JS W pt 21	R 2 S	M F and O	3
J	1107	Wrightman, Johnpts 18 and 19	R 4 S	M F and T	3

PART II.—Persons Entitled to Vote at Municipal Elections ONLY.

	26	Allan, RobertW hf S hf 21 and o p.	R 1 N	O	3
	120	Aeres, HenryW pt S hf 21	R 1 S	O	3
	427	Burwell, Rachel AS hf 17	R 5 S	O	15
	238	Clark, Thursapt N hf 21	R 1 N	O	1
	324	Clark, Josephpt 18 and 19	R 1 N	O	18
	285	Clark, Nathaniel jr.S E hf N hf 19	R 4 S	O	14
	360	Fisher, RachelN hf 20	R 1 N	O	3

Mrs
 Mrs
 Mrs
 Mrs
 Mrs

Polling Sub-Division No. 1.

ber ption.	P.O.	Jur.	No. on Roll.	NAME.	LOT.	Con. or Street.	Other Description.	P.O.
& F S.	14		378	Forsythe, Mary	S pt 1	E M R.	O	4
and O .	6							
and O..	4		717	Gowanlock, George	pt 21	R 4 S	O	19
& F S..	4		430	Goodrich, Nancy	W cor S hf 17	R 1 S	O	6
and O..	14							
& F S..	14		495	Higgs, Mary	S pt 1	E M R.	O	4
and O..	14							
& F S..	14							
and O..	1		517	Jarman, Henry sr	N hf 20	R 2 S	O	15
and O..	3							
and T..	14							
and O..	3		747	Nagle, Amelia	N hf 18	R 2 S	O	3
and T..	3							
			502	Price, Thomas	pt N hf 18	W M R.	O	18
			865	Price, Mary	S hf 8	W M R.	O	1
			1106	Rowland Edward	pts 18 and 19	R 4 S	O	2
			496	Stuart, John	pt 4 and 5	E M R.	O	14
			854	Scott, Martha	pt blk A	E M R.	O	2

ONLY.

PART III.—Persons Entitled to Vote at Elections to the Legislative Assembly ONLY.

mn's	Boyce Thomas	Reserve	M F	4	CC
mn's	Baldson George	Reserve	M F	4	CC
mn's	Baldson William	Reserve	M F	4	CC
	267 Clark, William	6	W M R.	M F	4
mn's	Louise George	Reserve	M F	4	CC
mn's	Burwell John M	s/p s/p 17	R 4 S	14	CC

Jur.	No. on Roll.	NAME.	LOT.	Con. or Street.	Other Description.	P.O.
	215	Cory, John	1	W M R	M F	4
EE. mms		Donovan William. str. s/20.		AM.	m F	3
EE. mms		Deleary Lewis, Reserve			m F	4
	338	Edgecombe, Henry	N hf N hf 17	R 3 S	M F	14
	429	Greenslade, Wm	24	R 4 S	M F	3
	484	Hay, John	pt 21 and 22	R 2 S	M F	3
	539	Kelly, John	pt 12	R 5 S	M F	4
	583	Lewis, Charles	12	R 5 S	M F	4
EE. mms		Mason Rev Thomas. Reserve			m F	4
	713	McGregor, John sr	pt 1 and D	W M R	M F	4
EE. mms		McGregor Robert. Rt D		mmk.	m F	4
	846	Ringrose, Chas	N hf 19	R 1 S	M F	3
EE. mms		Raymond Moses. E/2 s/18.		AM.	m F	1
	946	Stuart, William	E hf S hf 15	R 1 S	M F	6
	949	Smith, Francis	S hf 18	R 1 N	M F	3
	950	Smith, Frank	2	W M R	M F	4
EE. mms		Smith Frederick. 2		mmk.	m F	4
EE. mms		Sheppard Rev W. R. Reserve			m F	4
	996	Titterton, Richard	N pt 3	W M R	M F	6
EE. mms		Timings Alfred. N/2 20. N 1 S.			m F	3
	1077	West, George	N cor N hf 22	R 1 N	M F	3
EE. mms		Warner Joseph. Rt S/2 18. N 1 S.			m F	14

Polling Sub-Division No. 2,

Comprising all that portion of the Township lying West of the Side Road between Lots 12 and 13, and South of the 2nd Con.

PART 1.—Persons Entitled to Vote at BOTH Municipal Elections and Elections to the Legislative Assembly.

Jur.	No. on Roll.	NAME.	LOT.	Con. or Street.	Other Description.	P. O.
J	98	Beattie, Samuel R	W hf S hf 6	1	M F and O	5
J	108	Bateman, Allan W	S hf 10	1	M F and O	6
J	112	Bateman, Wm R	S W qr S hf 12, pt 12	R 1 S, R 1 N	M F and O	6
	113	Bateman, Charles	S W qr S hf 12, pt 12	R 1 S, R 1 N	M F and O	6
J	114	Bateman, Thos	W hf S ht 12	R 1 N	M F and O	6
	115	Bateman, Robt	pt N hf 11	R 1 N	M F and O	6
J	116	Bateman, Ed A	S hf 10	R 1 N	M F and O	6
J	118	Bateman, Archie C	pt N hf 10 and o p	R 1 S	M F and O	6
	111	Bateman, Chas T	S E cor S hf 12	R 1 N	M F and O	6
J	119	Bateman, Sydney	S E cor S hf 12	R 1 S	M F and O	6
J	110	Bateman, Wellington	N hf 12	R 1 N	M F and T	6
	1211	Bancroft, Joseph P	36, 37, 38, Melb	R 1 N	M F and O	5
	1212	Bennett, Geo M	36, 37, 38, Melb	R 1 N	M F and T	5
	1210	Balsdon, Christopher J	sub-lot 1, Melb	R 1 N	M F and T	5
	1208	Beaumont, Robert	19 Melb	R 1 S	M F and O	5
J	252	Cawthrope, Geo	N hf 1	1	M F and O	12
	253	Cawthrope, Geo E	N hf 1	1	M F and O	12
	247	Clark, Nathaniel sr	N hf 10	1	M F and O	1

Jur.	No. on Roll.	NAME.	LOT.	Con. or Street.	Other Description.	P.O.
J	248	Clark, Wm	N hf 10	1	M F & F S	1
J	259	Cavan, Charles	E hf S hf 4	1	M F and O	12
	243	Coleman, Wm H	N hf 11	1	M F and O	1
J	244	Coleman, Darius	N hf 11	1	M F and O	1
	245	Coleman, Angus	N hf 11	1	M F & F S	1
J	255	Cooper, Geo F	S hf W hf 2 and o p	1	M F and T	1
	258	Caven, Hugh	W hf S hf 4	1	M F and T	5
J	256	Caven, Caleb	W hf S hf 4	1	M F and T	5
J	257	Caven, James	W hf S hf 4	1	M F and T	5
J	263	Carruthers, Robt	pt N hf 6, pt S hf 6	R 1 N	M F and O	5
J	264	Carruthers, Arthur	pt S hf 5, pt 6	R 1 N	M F and O	5
J	265	Carruthers, James	S hf 4, pt S hf 5	R 1 N	M F and O	5
J	260	Campbell, John C	pt N hf 1	R 1 S	M F and O	5
	1219	Coulter, Ralph	47, 48	R 1 N	M F and O	5
	267	Cooper, James	56, pt 55 Mel & o p	R 1 N	M F and O	5
	1217	Cooper, John	29, 30 Mel	R 1 N	M F and T	5
	1216	Campbell, Neil	Sub 10, pt 1	R 1 N	M F and O	5
	1215	Campbell, Joseph	17 and 18, Mel	R 1 S	M F and O	5
	1214	Collier, James	17 and 18, Mel	R 1 S	M F and T	5
J	321	Dennis, Joseph H	S hf 3	1	M F and T	5
J	323	Dumigan, David A	S hf 11	R 1 S	M F and T	6
J	332	Errett, Thomas	N hf 3	R 1 N	M F and O	5
J	333	Errett, Henry	E hf S hf 7	R 1 N	M F and O	5
J	364	Fenwick, Edward	S hf 8	R 1 N	M F and O	6

Polling Sub-Division No. 2.

Jan.	No. on Roll.	NAME.	LOT.	Con. or Street.	Other Description.	P.O.
J	365	Forsythe, Geo A	E hf N hf 6	R 1 S	M F and O	5
J	363	Franklin, Edward	E pt S hf 11	1	M F and T	6
J	424	Griffith, Fred L	S pt W hf 2	R 1 N	M F and O	5
J	425	Griffith, John B	S hf 3 and o p	R 1 N	M F and O	5
J	426	Grigg, Wm	S hf 5 pt 6	R 1 S	M F and O	5
	1222	Gowman, Thos	E cor 1, N cor 1	R 1 N, R 1 S	M F and O	5
	1221	Graves, Josiah	67 to 70 Mel	R 1 N	M F and O	5
	1228	Hoskins, Garibaldi	S Melb	R 1 S	M F and T	5
J	489	Howe, Edward	pt N hf 8	R 1 N	M F and O	6
J	488	Howe, Francis	S hf 8	1	M F and O	6
J	490	Howe, Timothy	S hf 12	1	M F and O	6
J	362	Howe, James	E pt S hf 11	1	M F and O	6
	492	Holloway, Alfred	E pt S hf 5	R 1 N	M F and O	5
J	491	Haggarty, James	S hf 6	R 1 S	M F and O	5
J	507	Haggerty, Geo J	W hf N hf 8	R 1 S	M F and O	6
J	591	Hines, Wm	N W cor 9	R 1 N	M F and T	6
	1224	Harvey, Henry	S pt Mill prop, Melb	R 1 N	M F and O	5
	1229	Hill, Frederick	43 and 44, Melb	R 1 N	M F and O	5
	1243	Hardy, Thomas	71, 40 and 41, Melb	R 1 N	M F and O	5
	1230	Harvey, John	49 Melb	R 1 N	M F and O	5
	1269	Harvey, Frank	pt N hf 1	R 1 S	M F and O	5
	998	Hendrie, James	E hf S hf 6	1	M F and O	5
J	487	Holmes, Albert	W hf N hf 2	R 1 N	M F and O	5
	1226	Harrison, Thos E	sub-lot 11, Melb	R 1 N	M F and T	5

omit Harvey John 4 Melb R1N. M7 + 0.5 EE.

No. on Roll.	NAME.	LOT.	Con. or Street.	Other Description.	P.O.
1231	Johnston, Arthur M.	7, pt 21, Melb.	R 1 S	M F and O.	5
533	Kidd, Thomas	S hf 9	1	M F and O.	6
J 534	Kidd, Jos K	E hf N hf 10	R 1 N	M F and O.	6
EE - mmt 535	Kidd, John J	E hf N hf 10	R 1 N	M F and O.	6
J 537	Kain, John	S cor S hf 11	R 1 N	M F and T.	6
J 569	Lucas, Robert	pt S hf 11	R 1 S	M F and T.	6
1232	Long, Joseph	1, 13 to 16 Melb.	R 1 N	M F, O & T.	5
600	Marshman, Simeon	E hf 3	1	M F and O.	5
603	Mills, James	pt S hf 9	R 1 N	M F and O.	6
604	Mills, Alfred	pt S hf 9	R 1 N	M F & F S.	6
606	Marshman, George	N W cor N hf 2	R 1 S	M F and O.	5
J 602	Mills, Edmund	E hf N hf 12	R 1 S	M F and O.	6
J 601	Muldon, John	W hf N hf 10	R 1 N	M F and O.	6
J 607	Marshman, Job	N hf 7, S hf 8	R 1 S	M F and O.	5
700	McRoberts, John sr.	N hf 5	1	M F and O.	12
J 702	McRoberts, James	N hf 4	1	M F and O.	12
J 701	McRoberts, John jr.	N hf 5	1	M F and O.	12
J 703	McCracken, Henry	E hf S hf 2	1	M F and O.	5
697	McCracken, Samuel	N hf 7 and other prem.	1	M F and O.	12
698	McCracken, Ernest	N hf 7 and other prem.	1	M F & F S.	12
J 707	McNeil, Malcolm	pt S hf 1	R 1 S	M F and O.	5
708	McNeil, John A	pt S hf 1	R 1 S	M F and O.	5

Polling Sub-Division No. 2.

Jur.	No. on Roll.	NAME.	LOT.	Con. or Street.	Other Description.	P.O.
J	706	McClurg, George	S W pt S hf 7	R 1 S	M F and O	6
	705	McCraeken, Thos F	N hf 9	R 1 N	M F & F S	6
J	736	Near, Wilson	N hf 4	R 1 N	M F and O	5
J	737	Nagle, Charles	S hf 4 and other prem.	R 1 S	M F and O	5
J	738	Nagle, Thos E	W hf S hf 7	R 1 N	M F and O	5
J	1237	Nichols, Richard	1 and 2, Melb	R 1 N	M F and T	5
	1238	Petchi, Isaac	sub 9, Melb	R 1 N	M F and O	5
J	804	Prentice, Charles	pt S hf 3	1	M F and O	5
J	1093	Richards, Wm C	pt N hf 2	R 1 S	M F and O	5
J	841	Richards, George jr	E pt N hf 4	R 1 S	M F and O	5
J	842	Richards, Wilson	W pt 3, pt S hf 1	R 1 S	M F and O	5
	843	Richards, Geo sr	N hf 5, E pt 3	R 1 S, R 1 N	M F and O	5
	844	Richards, James	N hf 5, E pt 3	R 1 S, R 1 N	M F & F S	5
	1240	Richards, Edmund	26, 28, Melb	R 1 N	M F and O	5
	845	Richards, John W	N hf 5, E pt 3	R 1 S, R 1 N	M F & F S	5
J	864	Ridgway, Philip	S hf 10	R 1 S	M F and O	6
J	1242	Robinson, John W	59 to 63, Melb	R 1 N	M F and T	5
	941	Small, Andrew sr	S hf 7	1	M F and O	5
J	942	Small, Robt	S hf 7	1	M F and T	5
J	943	Small, William	S hf 7	1	M F and T	5
J	937	Small, James	W hf N hf 8	1	M F and T	1

Jur.	No. on Roll.	NAME.	LOT.	Con. or Street.	Other Description.	P.O
J	J14	Sawyer, Wm E.	pt S hf 11	1	M F and O.	1
	1244	Seudamore, Henry T	. 71, 40, 41, Melb.	R 1 N	M F and O.	5
J	939	Small, Andrew jr	E hf N hf 6	1	M F and O.	5
	1246	Stevenson, Isaac J	. 25 and 26, Melb	R 1 N	M F and T.	5
J	993	Trott, Wm A	N hf 9	1	M F and O.	1
J	999	Trott, Wm S	pt N $\frac{1}{2}$ 7, 8, E $\frac{1}{2}$ N $\frac{1}{2}$ 8	R 1 N, 1	M F, T & O.	5
J	1000	Trott, Edward	N hf 11	R 1 N	M F and O.	6
J	1248	Tolson, Wm	. 12, Melb	R 1 N	M F and T.	5
J	1249	Tolson, John	. 73, 74, 75, 76, Melb	R 1 N	M F and O.	5
J	1250	Tolson, Wm E.	. 73, 74, 75, 76, Melb	R 1 N	M F and O.	5
J	1251	Tolson, Jos H	. 73, 74, 75, 76, Melb	R 1 N	M F and O.	5
J	1241	Torrance, James W.	. 59 to 63, Melb, pt 1	R 1 N	M F and O.	5
J	994	Trayte, George	pt E hf N hf 1	R 1 S	M F and O.	5
J	1090	Williams, Wm E.	E hf N hf 8	R 1 S	M F and O.	6
	1068	Williams, Richard	. 9	R 1 S	M F and O.	6
	1253	Wellman, George	. 53, 54, 55 Melb	R 1 N	M F and O.	5
J	1094	Williams, Thos.	pt N hf 2	R 1 S	M F and T.	5
	1254	Williamson, Chas.	N cor Mill prop	R 1 N	M F and O.	5
	1252	Wellman, Joseph	pt Mill prop	R 1 N	M F and O.	5
J	1111	Young, Wm	N hf 12 and o p	1	M F and O.	1

PART II.—Persons Entitled to Vote at Municipal Elections ONLY.

Jur.	No. on Roll.	NAME.	LOT.	Con. or Street.	Other Description.	P.O.
		109 Bateman, Margaret	N hf 12	R 1 N	O	6
		117 Bateman, Margaret	W pt N hf 10 and o p.	R 1 S	O	6
		1213 Cady, John H	72, Melb	R 1 N	O	20
		266 Cady, Elizabeth H	pt N hf 1	R 1 S	O	5
		1218 Conn, Ann	39, Melb	R 1 N	O	5
		254 Cooper, Eliza	S hf W hf 2 and o p	1	O	5
		261 Carrnters, Delilah	W hf N W qr 6	R 1 S	O	5
		1233 Corneil, John M	13 to 16, Melb	R 1 N	O	21
		1220 Griffith, Mary J	pt N hf 1	R 1 S	O	5
		<i>miss Kidd John J</i>	<i>6 1/2 N 1/2 10</i>	<i>R 1 N</i>	<i>O</i>	<i>6</i>
		536 Lucas, Alonzo	S cor S hf 11	R 1 N	O	15
		1234 Lane, Alfred	sub 25, Melb	R 1 S	O	5
		599 Marshman, Catherine	N cor 2	R 1 N	O	5
		704 McCracken, Catherine	N pt 9	R 1 N	O	6
		1227 McClary, John	8, Melb	R 1 S	O	15
		1235 McLellan, David	pt mill property, Melb	R 1 N	O	15
		1245 Robinson, Margaret	25 and 26, Melb	R 1 N	O	22

EE

No. on Roll.	NAME.	LOT.	Con. or Street.	Other Description.	P.O.
1089	Watson, Frances	W hf N hf 12	R 1 S	O	6
1088	Wellman, James	W pt N hf 1	R 1 N	O	5

PART III.—Persons Entitled to Vote at Elections to the Legislative Assembly ONLY.

107 Bass, William E hf N hf 10 R 1 N M F 6

4th mm's Duvalle Carpenter Reserve M F 5-

366 Fenwick, John S hf 4 R 1 N M F 5

1223 Hearn, Thomas 1 R 1 N M F 5

4th mm's Mc Dougall Angus . Reserve M F 23

1247 Towers, Lewis pt 1 R 1 N M F 5

Polling Sub-Division No. 3.

Comprising all that portion of the Township lying in the 1st, 2nd, and South half of the 3rd Con. East of the Side Road between Lots 12 and 13.

PART 1.—Persons Entitled to Vote at BOTH Municipal Elections and Elections to the Legislative Assembly.

Jur.	No. on Roll.	NAME.	LOT.	Con. or Street.	Other Description.	P.O.
	1114	Anderson, Rev P H.	pt N hf 18	2 Mt Bgs	M F and T.	1
	1116	Abray, George.	W Ad st 16	3 Mt Bgs	M F and T.	1
J	28	Arnold, James	N hf 18	1	M F and T.	1
	29	Arnold, Edward	N hf 18	1	M F & F S.	1
	30	Arnold, Walter.	N hf 18	1	M F & F S.	1
	99	Bancroft, Wm G.	pt W hf N hf 20	2	M F and O.	2
	100	Bancroft, Wm	pt W hf N hf 20	2	M F and T.	2
	101	Brown, Wm	E cor S hf 21	1	M F and O.	3
J	102	Brown, David	E cor S hf 21	1	M F and T.	3
J	123	Borley, Wm E	S hf 18, pt N hf 19	1 and R 1 N	M F and O.	1
	125	Borley, R C	S hf 18, pt N hf 19	1 and R 1 N	M F & F S.	1
<i>imm</i>	124	Borley, Ernest	S hf 18, pt N hf 19	1 and R 1 N	M F & F S.	1
<i>imm</i>	126	Borley, E R	S hf 18, pt N hf 19	1 and R 1 N	M F & F S.	1
	1129	Brownson, Sam C	27 to 31 and o p.	2 Mt Bgs	M F and O.	1
	1127	Broom, Thomas	313 to 319 and o p.	2 Mt Bgs	M F and O.	1
	1126	Baker, Thomas.	W Ad st, 18	2 Mt Bgs	M F and O.	1
J	1125	Bignall, George.	blk E, 17 and 18	2 Mt Bgs	M F and O.	1
	1118	Bartlett, Henry A	blk C, 1, 17, pt 2	2 Mt Bgs	M F and O.	1
J	1122	Betts, John	blk C, 16, pt 15	2 Mt Bgs	M F and O.	1
J	1117	Bice, Mark	blk I, 16	2 Mt Bgs	M F and O.	1

EE
EG

Other description. P.O.
..... 6
..... 5

Legislative

F..... 6

4 5-

F..... 5

F..... 5

4 23

F..... 5

Jur.	No. on Roll.	NAME.	LOT.	Con. or Street.	Other Description.	P.O.
J	122	Brown, Joseph	E hf S hf 17	1	M F and O	1
	1128	Black, George	171, 172, pt 107	2 Mt Bgs	M F and O	1
J	1120	Bolton, Alfred	blk C, 13, 14, pt 12	2 Mt Bgs	M F and O	1
J	62	Badge, Humphrey	blk K, 16 and o p	2 Mt Bgs	M F and O	1
	63	Badge, George	pt S hf 18	3	M F and O	1
	1119	Bond, John	blk C, 8, 9, 10	2 Mt Bgs	M F and O	1
	1123	Burwell, I B	blk C, 7	2 Mt Bgs	M F and T	1
J	96	Burch, Wm J	W hf S hf 14	2	M F and O	1
	235	Cade, Robert	S pt N $\frac{1}{2}$ 19, pt S $\frac{1}{2}$ 19	1	M F and O	1
J	230	Clark, Pearson	pt S hf 21	2	M F and O	1
	231	Clark, James P	S E pt 22	2	M F and O	1
	240	Coy, John	pt N $\frac{1}{2}$ 21 & other pre	1 and R 1 N	M F and O	1
	241	Coy, Richard A	pt N $\frac{1}{2}$ 21 & other pre	1 and R 1 N	M F & F S	1
J	239	Cullen, Michael	E pt 16	2	M F and O	1
J	234	Cartner, Robert	W hf S hf 18	2	M F and O	1
J	268	Cobbald, James R	W hf S hf 17	1	M F and O	1
	1138	Crozier, John B	blk H, pt 18 & o p	2 Mt Bgs	M F and O	1
	1270	Crozier, Charles	blk H, pt 18 & o p	2 Mt Bgs	M F and O	1
	269	Cobbald, James	W hf S hf 17	1	M F and O	1
	1135	Caslick, Robert	W Ad st 15, Pr st 15	2 Mt Bgs	M F and T	1
	1133	Cullen, John	E Ad st 9 to 14	2 Mt Bgs	M F and O	1
	1141	Crooks, Wm	23 to 26 & other pre	2 Mt Bgs	M F and O	1
	1136	Clark, John	blk E, pt 1 & 2, & o p	2 Mt Bgs	M F and O	1
J	237	Coreoran, Dennis	pt N hf 21 and 22	1	M F and T	1
	1137	Clay, Henry	blk B, 3, pt 2	2 Mt Bgs	M F and O	1
J	226	Coates, Furlow	W hf S hf 19	3	M F and O	1

Polling Sub-Division No. 3.

23

No. on Roll.	NAME.	LOT.	Con. or Street.	Other Description.	P.O.
J 242	Crozier, George B	W hf N hf 13	1	M F and O..	1
J 229	Chamberlain, Wm	S hf 23	3	M F and O..	1
J 228	Craven, John A	W hf S hf 22	3	M F and T..	10
J 232	Clark, Edward A	S hf 20	2	M F and T..	1
	318 Dunn, Wm sr	E pt 24	2	M F and O..	10
	319 Dunn, Edwin	E pt 24	2	M F & F S..	10
	1142 Dingman, Charles	W Ad st 6 to 8 & o p.	2	Mt Bgs.....	M F and O.. 1
	910 Dingnan, Casper	W Ad st 6 to 8 & o p.	2	Mt Bgs.....	M F and O.. 1
J 320	Dawson, Vickers	E hf N hf 13	1	M F & F S..	1
	1143 Dingman, Wellington G.	pt reserve	3	Mt Bgs.....	M F and O.. 1
	1144 Elsey, James	blk H, pt 14, 15, 16	2	Mt Bgs.....	M F and O.. 1
J1148	Francis, Wm	pt S hf 17 and o p.	3	M F and O..	1
	1147 Fisher, John J.	blk H, pt 14 and 15	2	Mt Bgs	M F and O.. 1
	1146 Fisher, Benj W	pk lots 1 and 2 & o p	2	Mt Bgs	M F and O.. 1
	571 Fisher, Benj A.	168	2	Mt Bgs	M F and O.. 1
J 423	Graves, Angus	cen pt N hf 22	2	M F and O..	1
J1154	Gillam, Hiram	pt S hf 18 and o p	2	Mt Bgs	M F and O.. 1
	1151 Geddes, Wm	E Ad st 8, W E st 8	3	Mt Bgs	M F and O.. 1
	1152 Gardiner, David	E Em st, 3, 4, 5	3	Mt Bgs	M F and O.. 1
J 433	Gilders, George	S hf 13	1	M F and T..	6
J 480	Heath, Robert	N hf N hf 21	2	M F and O..	1

Jur	No. on Roll.	NAME.	LOT.	Con. or Street.	Other Description.	P.O.
J	482	Heath, Francis	cen pt 21	1	M F and O	1
	1159	Hadden, Jos sr	E pt N hf 18	2	M F and O	1
	J1160	Hadden, Jos jr	E pt N hf 18	2	M F and O	1
	H99	Hadden, Wm	blk C, 18	2	Mt Bgs	M F and O
	1074	Hartley, George	pt E hf 22	2	M F and O	1
	1161	Humphreys, Alex	175, 176, 177, 178	2	Mt Bgs	M F and O
J	486	Hoover, Joseph E	N hf 16	1	M F and O	1
	478	Hare, Justin	pt S hf N hf 18	3	M F and T	1
	J1162	Hoover, Benj C	55 and 56 and o p	2	Mt Bgs	M F and T
		<i>Heuderson Edward</i>	<i>Blk H Rt 1 & 2</i>	<i>2</i>	<i>Mt Bgs</i>	<i>M F + T</i>
		<i>Healy James</i>	<i>Rt 2 1/2 16</i>	<i>2</i>	<i>Mt Bgs</i>	<i>M F + T</i>
J	513	Innis, Hugh	E hf 22	1	M F and O	3
	1207	Jackson, Thomas	100 and 101	2	Mt Bgs	M F and T
	J1164	Kilbourn, Ben	pt N hf 17	2	M F and T	1
	1163	Kellestine, Andrew	1 to 6 and 63 to 75	2	Mt Bgs	M F and O
	1169	Kellock, Andrew	blk E 12	2	Mt Bgs	M F and O
	1166	Kinch, Peter	blk B, 10 and o p	2	Mt Bgs	M F and O
	J1175	Lloyd, Fergus	pt N hf 18 and o p	2	M F and O	1
	563	Lipsit, Jasper	N cor N hf 16	2	M F and O	1
J	573	Lowthian, George	S hf 14	1	M F and O	6
	1171	Lee, Elijah	181, 182, 183, 184	2	Mt Bgs	M F and O
J1176		London, Franklin F	206 to 212 and o p	2	Mt Bgs	M F and O
	581	Luce, Seth	blk H, 17	2	Mt Bgs	M F and O
	1173	Lipsit, Bannon	blk B, 1, pt 2	2	Mt Bgs	M F and O

Polling Sub-Division No. 3.

Jur.	No. on Roll.	NAME.	LOT.	Con. or Street.	Other Description.	P.O.
	1183	Peaker, Alfred	E Ad st, 19 & 20, & o p.	3 Mt Bgs	M F and O	1
	1184	Peaker, Charles	E Ad st, 19 & 20, & o p.	3 Mt Bgs	M F and O	1
J	1185	Pearce, Thos	blk H, 1, 2 and o p.	2 Mt Bgs	M F and O	1
	1187	Porter, William	132 to 146 and o p.	2 Mt Bgs	M F and T	1
	1186	Porter, James	119, 120, 121	2 Mt Bgs	M F and O	1
	800	Patrick, George	N E pt 16	2	M F and O	1
J	233	Root, John	S hf 20	2	M F and T	1
J	839	Ramsay, Peter	W hf N hf 17	1	M F and O	1
	431	Robinson, Thomas	S hf 13	1	M F and O	6
J	432	Robinson, Jos	S hf 13	1	M F and O	6
	1190	Robertson, Wm C	blk I, 13, 14, 15	2 Mt Bgs	M F and O	1
J	840	Runnalls, Rich	N hf 14	1	M F and O	1
	1189	Robinson, Joseph	blk B, 18	2 Mt Bgs	M F and T	1
	936	Stover, Jacob	W hf S hf 13	2	M F and O	1
	935	Smith, Francis sr	E hf S hf 13	2	M F and O	1
	1193	Simpson, George	blk E 15 and 16	2 Mt Bgs	M F and O	1
	1192	Small, David	E pt N hf 18 and o p.	2	M F and O	1
	929	Steer, Robert	S hf 13	3	M F & F S	1
J	934	Stratton, Alfred H	E hf S hf 14	2	M F and O	1
J	1194	Simpson, John	blk D, 1 and o p.	2 Mt Bgs	M F and O	1
J	930	Steer, Richard	W hf S hf 14	3	M F and O	1
J	932	Sutherland, Robert	S hf 15	3	M F and O	1
J	931	Steer, John	E hf N hf 17	1	M F and T	1
J	983	Tilden, Geo B	S pt 23	2	M F and O	1

Polling Sub-Division No. 3.

Other Description.	P.O.	Jr.	No. on Roll.	NAME.	LOT.	Con. or Street.	Other Description.	P.O.
F and O..	1	J	986	Tilden, Chas M.....	N pt 23	2	M F and T..	1
F and O..	1	J	985	Tilden, Stephen E	N pt 23.....	2	M F and T..	1
F and O..	1	J	982	Thomas, David.....	S hf 21	3	M F and O..	1
F and T..	1	J	987	Thomas, W A	S pt N hf 21, pt 22....	2	M F and O..	1
F and O..	1		1199	Thomas, Win	131 to 145.....	2 Mt Bgs.....	M F and O..	1
F and O..	1		1004	Tull, Robt M	S hf 16 and other pre..	1	M F & F S..	1
F and O..	1	J	989	Tull, Rich S	N hf 15	1	M F and O..	1
F and T..	1	J	988	Toles, Francis B	pt N hf 19	1	M F and O..	1
F and O..	1	J	1198	Taggart, Thos	167 and other prem....	2 Mt Bgs.....	M F and O..	1
F and O..	6	J	981	Thomas, Albert E	W hf N hf 20	2	M F and O..	1
F and O..	6		1005	Tull, Thos H.....	S hf 13 & other pre ..	1	M F & F S..	1
F and O..	1		1197	Thompson, Lorenzo....	blk A 1.....	2 Mt Bgs.	M F and T..	1
F and O..	1							
F and T..	1	J	1009	Vrooman, Nelson.....	W hf S hf 15	2	M F and O..	1
			1132	Veale, Richard.....	108 and other prem ..	2 Mt Bgs	M F and T..	1
F and O..	1							
F and O..	1		1201	Wadsworth, Thos	pk 3,5,6 and o p.....	3	M F and O..	1
F and O..	1		1202	Wadsworth, Geo.....	pk 3,5,6 and o p.....	3	M F and T..	1
F and O..	1	J	1066	Waters, Francis	pt N hf 22 and o p....	2	M F and O..	1
F & F S..	1	J	1073	Weekes, John	23 and 24	1	M F and O..	1
F and O..	1	J	1072	Weekes, James	23 and 24	1	M F and O..	1
F and O..	1	J	1081	Waters, Edward	pt S hf 21.....	2	M F and T..	1
F and O..	1	J	1092	Williams, Rich A	E hf S hf 15.....	1	M F and O..	6
F and O..	1	J	1075	Wilson, Joseph	pt E hf 22.....	2	M F and T..	1
F and T..	1	J	1065	Weekes, Thos	S hf 20	3	M F and O..	1
			1082	Walker, George	E hf S hf 19.....	2	M F and O..	1
F and O..	1	J	1083	Walker, Alfred F.....	E hf S hf 19	2	M F and O..	1

Polling Sub-Division No. 3.

No. on Roll.	NAME.	LOT.	Con. or Street.	Other Description.	P.O.
1079	Waters, Cornelius	E hf N hf 20	1	M F and O..	1
J1085	Waters, Arthur	W hf 22	1	M F and O..	3
1205	Wilkinson, James	179, 180.	2 Mt Bgs.	M F and O..	1
1204	Wootten, Richard	blk F, 18, and o p	2 Mt Bgs.	M F and O..	1
1203	West, Thomas	blk F, pt 1, 2, 3	2 Mt Bgs.	M F and O..	1
1067	Walker, Christmas	E cor S hf 24	3	M F and O..	1
J1069	Walker, William	pt S hf 24	3	M F and O..	1
J1070	Walker, John H.	pt S hf 24	3	M F and O..	1
1206	Waters, Wm	163 and 164	2 Mt Bgs.	M F and O..	1
	<i>Waters John</i>	<i>6 1/2 x 2 1/2 20</i>	<i>1</i>	<i>M + S</i>	<i>1</i>

PART II.—Persons Entitled to Vote at Municipal Elections ONLY.

1124	Bishop, David	blk H 1, 2 & 3, pt 18.	2 Mt Bgs.	O	2
559	Badge, Wm	pt S hf 18.	3	O	1
1131	Bennett, Frank	108 and other prem.	2 Mt Bgs.	O	18
236	Coreoran, Eliza	pt N hf 21, 22.	1	O	1
1196	Clay, Ann	blk A 1.	2	O	1
27	Curry, John	N hf 18.	1	O	16
1115	Davidson, Thomas	W Ad st 18.	3	O	1
1145	Fisher, Keziah	E Ad st 7 and o p	3	O	1
1149	Francis, Chas B	N hf 15.	2	O	1
1150	Gibson, Hannah	W Ad st, 10 to 14 & o p.	3 Mt Bgs.	O	1

Polling Sub-Division No. 3.

Other description. P.O.
 F and O.. 1
 F and O.. 3
 F and O.. 1
 F and O.. 1
 F and O.. 1
 F and O.. 1
 F and O.. 1
 F and O.. 1
 + S.S. /
 s ONLY.

Just. No. on Roll.	NAME.	LOT.	Con. or Street.	Other Description.	P.O.
1153	Gustin, Sarah J	pt S hf 17	2	O	1
1188	Graves, John	blk B 18	2 Mt Bgs	O	28
	<i>Hadden trm</i>	<i>Blk G 18.</i>	<i>2 mt bgs</i>	<i>O</i>	<i>1</i>
1165	Kinch, Robert	W pt N hf 17	2	O	29
1167	Kennedy, Angus	blk H, 17	2 Mt Bgs	O	15
1170	Lipsit, Jane	E Ad st 17	3	O	1
1171	Lee, Joseph	181 to 184	2 Mt Bgs	O	1
1157	Mills, Chas J	blk I, 1	2 Mt Bgs	O	15
227	Murdock, Wm	W hf S hf 22	3	C	2
735	Neville, Pamela	S hf 17	2	O	1
1163	Nicholson, Henry	pt N hf 17 and o p	2	O	2
1080	Olett, William	pt S hf 21	2	O	1
1134	Porter, John O.	W Ad st 15, Pr st 15	2 Mt Bgs	O	27
928	Steer, Emily	S hf 13	3	O	1
1191	Sutherland, Annie	blk C, pt 1 and 2	2 Mt Bgs	O	1
984	Tilden, Chas N D	N pt 23	2	O	2
877	Thomas, David	pt S hf 17 & 18 & o p	1	O	15
1003	Tull, Mary J	S hf 16	1	O	1

E.E.

Jur. No. on Roll.	NAME.	LOT.	Con. or Street.	Other Description.	P.O.
1086	Webb, Arabella	pt S hf 20	1	0	1

PART III.—Persons Entitled to Vote at Elections to the Legislative Assembly ONLY.

1130 Bancroft, John pt 18 2 M F 1

1155 George, Ed N G T R Agent 2 Mt Bgs M F 1

W.C.
~~1156 Henderson, Edward blk II, pt 1 and 2 2 Mt Bgs M F 1~~

481 Heath, Thomas N hf N hf 21 2 M F 1

485 Henry, John S hf 17 2 M F 1

W.C.
~~1158 Healy, James blk I, 1 2 Mt Bgs M F 1~~

W.C.
W.C.
W.C.
 Jarvis John . Blk E 17+18 . 2 mt bgs m f 1

W.C.
 McMurphy Hugh . 17+18 . 2 mt bgs m f 1

W.C.
 Robertson George A . 15 . 2 mt bgs m f 1

1195 Soloman, Simon 80 and 81 2 Mt Bgs M F 1

1200 Vrooman, James blk B, 6 2 Mt Bgs M F 1

1084 Walker, Charles E hf S hf 19 2 M F 1

1087 Wigley, Edward N hf 16 1 M F 1

Polling Sub-Division No. 4.

JUL	No. on Roll.	NAME.	LOT.	Con. or Street.	Other Description.	P.O.
J	106	Bateman, Samuel	W hf S hf 5	2	M F and O.	12
	104	Beattie, James	S hf 6, pt N hf 6	2	M F and O.	12
	105	Beattie, Patten	S hf 6, pt N hf 6	2	M F & F S.	12
J	91	Bolton, Richard	W hf S hf 4	3	M F and O.	12
J	103	Beattie, Jas J	W pt S hf 10	2	M F and O.	1
J	213	Connor, James	W hf N hf 6	5	M F and O.	7
J	212	Campbell, Dugald	N hf 12	5	M F and O.	2
J	225	Coleman, James	E cor N hf 12 and o p	2	M F and T.	1
J	222	Cushman, James	E hf S hf 3	3	M F and O.	12
	223	Cushman, Hiram	E hf S hf 3	3	M F & F S.	12
J	249	Carruthers, John	E hf S hf 9	2	M F and O.	1
J	221	Cobban, Daniel	S hf 3, W hf S hf 5	4	M F and O.	12
J	214	Cobban, James	N hf 3	4	M F and O.	7
J	251	Cawthrope, Ernest	S hf 2	2	M F and O.	12
J	246	Clark, James	S E pt 10	2	M F and O.	1
J	220	Case, Peter	W hf S hf 3	3	M F and O.	12
J	317	Dillon, Thomas	N hf 1	3	M F and O.	12
	348	Ferguson, Samuel	E pt N hf 11	6	M F and O.	2
J	349	Ferguson, John	E pt N hf 11	6	M F and T.	2
J	353	Fisher, John	S hf 8, W hf N hf 8	6	M F and O.	7
J	352	Fisher, Benjamin	N W pt 8	5	M F and O.	7
J	354	Farrow, Wm	W hf 9 and other pre	5	M F and T.	2
J	359	Francis, Robt H	W hf S hf 11	3	M F and O.	1

Polling Sub-Division No. 4.

Other Description. P.O.
 M F and O.. 12
 M F and O.. 12
 M F & F S.. 12
 M F and O.. 12
 M F and O.. 1
 M F and O.. 7
 M F and O.. 2
 M F and T.. 1
 M F and O.. 12
 M F & F S.. 12
 M F and O.. 1
 M F and O.. 12
 M F and O.. 7
 M F and O.. 12
 M F and O.. 1
 M F and O.. 12
 F and O.. 2
 F and T.. 2
 F and O.. 7
 F and O.. 7
 F and T.. 2
 F and O.. 1

Jur.	No. on Roll.	NAME.	LOT.	Con. or Street.	Other Description.	P.O.
J	347	Farrow, Isaac	E hf N hf 9	4	M F and O..	2
J	355	Farrow, John	W hf N hf 9	4	M F and O..	2
J	385	Grigg, John P.	N hf 11	4	M F and O..	1
	420	Grigg, Wm	pt N hf 12 and other pre.	2	M F and O..	1
	422	Grigg, Elias G.	pt N hf 12 and other pre.	2	M F & F S..	1
J	419	Grigg, Wm H.	E hf S hf 11	3	M F and O..	1
J	415	Graves, Hanson	N hf 6	3	M F and T..	12
	421	Grigg, Arthur	pt N hf 12 and o p	2	M F & F S..	1
J	418	Grigg, Frank	N pt N hf 10	2	M F and O..	1
J	460	Howe, Thomas	S hf 1	6	M F and O..	7
J	462	Hixon, Levi J	S hf 6, S hf 4.	5 and 6	M F and O..	7
J	463	Hixon, Francis G.	S hf 6, S hf 4.	5 and 6	M F and O..	7
J	464	Hixon, Edward J.	S hf 6, S hf 4.	5 and 6	M F and O..	7
J	465	Hixon, Wilbur H.	S hf 6, S hf 4.	5 and 6	M F and O.	7
J	461	Howe, George	N hf 5, W hf N hf 5	5 and 6	M F and O..	7
J	453	Hutton, Alex B	W hf S hf 9, E hf N hf 8.6		M F and O..	2
	454	Hutton, John W.	W hf S hf 9, E hf N hf 8.6		M F & F S..	2
J	455	Hutton, James L.	E hf S hf 9, pt 10.	5	M F and O..	2
J	467	Hardy, Henry	S hf 7.	5	M F and O..	2
J	466	Hixon, John.	E hf S hf 5.	5	M F and O..	7
J	475	Harrison, Willo'by.	S hf 6	4	M F and O..	12
J	474	Hucheson, John	pt W hf N hf 8, pt 1	3 and 4	M F and O..	1
J	469	Hutcheson, Geo	E hf N hf 1, pt 6.	4	M F and O..	7
	451	Harrison, Wesley A.	S hf 6.	4	M F & F S..	12
J	477	Helmer, Daniel H	E hf S hf 5.	4	M F and T..	12

Jur.	No. on Roll.	NAME.	LOT.	Con. or Street.	Other Description.	P.O.
J	511	Inches, George	N hf 5	3	M F and O	12
	512	Inches, Wm G	N hf 5	3	M F & F S	12
J	508	Inches, John	W hf S hf 10	4	M F and O	1
J	509	Inches, Thomas	E hf S hf 10, pt 11	4	M F and O	1
	510	Inches, James	E hf S hf 10, pt 11	4	M F & F S	1
	525	Kellestine, Warren	W hf N hf 2	4	M F and O	12
J	530	Kellestine, John	W hf N hf 2	3	M F and T	12
	531	Kellestine, Geo sr	15 Mid	2	M F and O	12
	532	Kellestine, Geo jr	16 Mid	2	M F and O	12
J	556	Langford, James A.	cen pt S hf 10	5	M F and O	2
<i>etc.</i>	554	Lee, John	N hf 5	4	M F and O	7
J	644	McArthur, Donald	N hf 10	6	M F and O	2
J	672	McDougall, Dunc'n sr.	S hf 10, S hf 11	6	M F and O	2
	673	McDougall, Arch	S hf 10, S hf 11	6	M F & F S	2
	674	McDougall, Dunc'n jr.	S hf 10, S hf 11	6	M F & F S	2
	675	McDougall, Donald	S hf 10, S hf 11	6	M F & F S	2
J	667	McDougall, Arch	W hf S hf 12	6	M F and T	2
J	671	McLean, Chas	N hf 11	5	M F and T	2
J	669	McLean, Hector	S hf 12	5	M F and O	1
J	668	McDougall, Peter	E hf S hf 12	6	M F and O	2
J	678	McPhail, Arch	N hf 10	4	M F and O	2
	679	McPhail, Arch J	N hf 10	4	M F & F S	2
	720	McGregor, James sr.	S hf 7 and o p	3	M F and O	12
	721	McGregor, Thos	S hf 7 and o p	3	M F & F S	12

Polling Sub-Division No. 4.

Other Description.	P.O.	Jur	No. on Roll.	NAME.	LOT.	Con. or Street.	Other Description.	P.O.
and O..	12		722	McGregor, Lorn F	S hf 7 and o p	3	M F & F S..	12
& F S	12	J	699	McCracken, James	E hf S hf 5 and o p	2	M F and O..	12
and O..	1		695	McMullen, Thos	S	2	M F and O..	1
and O..	1	J	696	McMullen, Thos J	S	2	M F and O..	1
& F S..	1	J	694	McCracken, Ambrose, W	hf S hf 9	2	M F and O..	12
and O..	12		734	Niehols, Daniel	6 and 7, Middleton	2	M F and O..	12
and T.	12		1033	Oaks, Samuel sr	pt N hf 12	6	M F and O..	2
and O..	12		783	Pettit, Francis	W hf N hf 3	6	M F and O..	7
and O..	7	J	780	Pettit, Levi	pt N hf 2 & 3, W hf S hf 4	6 and 7	M F & O T..	7
and O..	2	J	781	Pettit, Henry	pt N hf 2 & 3, W hf S hf 4	6 and 7	M F & O T..	7
and O..	2	J	812	Pierce, Francis	E hf S hf 8	5	M F and O..	2
and O..	2	J	811	Pierce, Benjamin	pt S hf 8	5	M F and T..	7
& F S..	2	J	796	Pettit, Martin	E hf S hf 3	5	M F and O..	7
& F S..	2	J	792	Pierce, Robt.	pt N hf 1	5	M F and O..	7
& F S	2	J	789	Philips, James	pt 2	6	M F and O..	7
and T..	2	J	790	Paisley, Wm	W hf S hf 3, S hf S hf 5	6	M F and O..	7
and T..	2	J	791	Paisley, Samuel	W hf S hf 3	6	M F & F S..	7
and O..	1	J	897	Pullen, Noah	E hf N hf 6	5	M F and O..	7
and O..	2	J	787	Pullen, Joseph	S hf 7, pt 6	6	M F and O..	7
and O..	2	J	788	Pullen, John	N hf S hf 5	6	M F and O..	7
& F S..	2	J	797	Pierce, Thomas	W hf S hf 5, S hf S hf 4	5	M F and O..	7
and O..	12	J	801	Philips, James	1	2	M F and O..	12
& F S..	12	J	802	Philips, Walter	1	2	M F and O..	12

Jur.	No. on Roll.	NAME.	LOT.	Con. of Street.	Other Description.	P.O.
J	803	Philips, Albert	1	2	M F and O.	12
	799	Patrick, Wm	E pt N hf 8	3	M F & F S.	1
J	795	Pullman, Samuel	E hf S hf 2	5	M F and T.	7
	825	Ramey, James	E hf N hf 2	5	M F and O.	7
J	826	Ramey, Joseph	E hf N hf 2	5	M F and T.	7
J	829	Ramey, Thos G	W hf S hf 2	5	M F and O.	7
J	828	Ramey, Wm	W hf N hf 2	5	M F and O.	7
J	857	Richardson, John	E hf S hf 11	5	M F and O.	2
	827	Rice, Frederick	E pt S hf 3	5	M F and O.	7
<i>OK</i>	<i>h.m.s.</i> 833	<i>Ramsey</i> Ramey George	N hf 10	3	M F and O.	1
	836	Robinson, John	S hf 5	3	M F and O.	12
J	835	Rae, Alexander	N pt 3 and o p	2	M F and O.	12
J	837	Robinson, Geo W	S hf 5	3	M F and T.	12
J	216	Stephenson, Alfred	E hf N hf 4 and o p	5 and 6	M F and O.	7
J	898	Stephenson, Robert	W hf N hf 4 and o p	5 and 6	M F and O.	7
J	904	Sutherland, George	pt N hf 8	4	M F and O.	6
J	900	Sutherland, John	E hf N hf 7, pt 1	4	M F and O.	2
J	899	Stuart, John	W hf N hf 6	4	M F and O.	7
J	919	Sutherland, Isaac	W hf S hf 7	4	M F and O.	1
J	920	Sutherland, Thomas	E hf S hf 7	4	M F and O.	1
J	918	Sutherland, Henry	W hf S hf 8	4	M F and O.	1
	922	Simmons, Wm T	E hf S hf 4	4	M F & F S.	12
J	917	Sutherland, Wm	E hf S hf 8	4	M F and O.	1
J	916	Sutherland, Alex	S hf 9, pt 8	4	M F and O.	1
J	915	Sutherland, James I.	N hf 9 and o p	3	M F and O.	1

Polling Sub-Division No. 4.

Jur	No. on Roll.	NAME.	LOT.	Con. or Street.	Other Description.	P.O]
J	903	Sutherland, Chas....	W hf N hf 7 and o p	4 and 3	M F and O..	1
	912	Scott, Wm.....	N hf 12	3	M F and O..	1
J	913	Scott, Robt	N hf 12	3	M F and T..	1
J	925	Steer, Frank.....	S hf 12	3	M F & F S..	1
J	926	Steer, Walter	S hf 12	3	M F & F S..	1
J	927	Stuart, Stephen	W hf S hf 2	3	M F and O..	12
J	923	Stockings, Chris	N pt N hf 2	2	M F and O..	12
	940	Seaburn, John.....	S hf 3	2	M F and O..	12
J	938	Simmons, Moses	S hf 7	2	M F and O..	12
J	914	Scott, Alexander....	E hf S hf 11	4	M F and O..	1
J	896	Smale, Henry	W qr S hf 6 and o p	6	M F and O..	7
J	969	Toal, Wm	N hf 7.....	5	M F and O..	7
J	970	Toal, David J	N hf 7.....	5	M F & F S..	7
J	979	Trott, Wm	N hf 9.....	2	M F and O..	1
	980	Trott, James S.....	N hf 9	2	M F & F S..	1
	991	Thompson, John....	W pt S pt 11	2	M F and O..	1
	1008	Thornton, Frederiek N	cor N hf 12	6	M F and O..	2
J	992	Thompson, John H..	E pt S hf 11	2	M F and O..	1
	990	Thompson, Francis..	pt S hf 11 and 12.....	2	M F and O..	1
	1062	Westbrook, Leonard.	blk I, Middleton 1	2	M F and O..	12
J	1034	Wakem, John	E hf N hf 3	6	M F and O..	7
J	1046	Whittaker, Joseph..	W hf S hf 6	6	M F and O..	7
J	1032	Watson, Walter W..	E hf N hf 9, N hf 12.....	5 and 6	M F, T & O..	2
J	1048	Welch, Lyman.....	pt S hf 10, pt S hf 11	5	M F and O..	2
	1063	White, James	N pt N hf 6	2	M F and O..	12

Jur. No. on Roll.	NAME.	LOT.	Con. or Street.	Other Description.	P.O.
J1064	White, Robert	N pt N hf 6	2	M F and T	12
J1036	Wakem, Thos	N hf 6	6	M F and O	7
1059	Windall, James	W qr S hf 1	3	M F and O	12
J1042	Webb, Richard	E pt N hf 11	6	M F and O	2
J1058	Wilcock, A T	N hf 11	3	M F and T	1

PART II.—Persons Entitled to Vote at Municipal Elections ONLY.

<i>44. m. Berdan John. E Rt S 1/2 1.</i>			3	<i>0</i>	<i>2</i>
51 Blair, Elizabeth	N hf 9, pt 10	6 and 7		O	2
224 Campbell, Wm J.	E cor N hf 12	2		O	2
316 Dillon, John	N hf 1	3		O	12
468 Hutcheson, Margaret	E hf N hf 6	4		O	7
476 Harrison, Elizabeth	E hf S hf 5	4		O	12
505 Howe, Joseph	N hf 1	6		O	13
596 Moore, Martha	1 to 9. H st, Midd	2		O	12
670 McLean, Nancy	N hf 11	5		O	2
666 McDougall, Jane	W hf S hf 12	6		O	2
676 McKee, James	S hf 1	5		O	12
677 McKee, John D	S hf 2	4		T	12
414 McEwen, Robt.	N hf 6	3		O	17

Polling Sub-Division No. 4.

Jur.	No. on Roll.	NAME.	LOT.	Con. or Street.	Other Description.	P.O.
	798	Patriek, Jane	E pt N hf 8	3	O	12
	793	Patterson, Thos	N W eor N hf 1	5	O	7
	810	Pierce, Mary A	pt S hf 8	5	O	7
	794	Rice, Catherine	E hf S hf 2	5	O	2
	861	Raymond, James	N hf 12	4	O	2
	921	Simmons, Anelia	E hf S hf 4	4	O	12
	924	Steer, Sarah	S hf 12	3	O	1
	1057	Wileoek, Jessie E	N hf 11	3	O	1

PART III.—Persons Entitled to Vote at Elections to the Legislative Assembly ONLY.

	90	Bass, Albert	S hf 3	3	M F	12
	250	Collins, Patriek	S	2	M F	1
	326	Depotty, George	E pt S hf 1	3	M F	12
	407	Glennie, George	pt W hf S hf 3	5	M F	7

Jur.	No. on Roll.	NAME.	LGT.	Con. or Street.	Other Description.	P.O
	479	Hueston, Alfred R	N hf 1	2	M F	12
	555	Lazenby, David	S hf 7	5	M F	2
	834	Reynolds, Wm	N hf 8	3	M F	1
	832	Raymond, Chas	N hf 8	4	M F	6
	830	Rice, James	pt E hf S hf 3	5	M F	7
	1060	White, James	N hf 1	2	M F	12
	1061	Wightman, Hamilton	N hf 1	2	M F	12
	1049	Welch, David	N hf 12	4	M F	2

Polling Sub-Division No. 5.

Comprising all that portion of the Township lying in the North half of the 6th and the 7th, 8th, 9th and 10th Concessions East of the Side Road between lots 12 and 13.

PART 1.—Persons Entitled to Vote at BOTH Municipal Elections and Elections to the Legislative Assembly.

Jur.	No. on Roll.	NAME.	LOT.	Con. or Street.	Other Description.	P.O.
J	70	Buttery, John	S W pt S hf 13	9	M F and O.	2
J	142	Bond, Frederiek	N pt N hf 17	10	M F and O.	2
J	37	Bond, Samuel	N hf 16	9	M F and O.	2
J	43	Brooks, Hugh	S hf 21, S hf 22	10	M F and O.	2
	61	Ball, Thos sr	W pt S hf 20	9	M F and O.	2
J	38	Ball, Robert T	E hf N hf 21	10	M F and O.	2
	73	Bell, Riehard	pt S hf 20, S hf 20	7 and 8	M F and O.	2
J	75	Bell, James S	pt S hf 20, S hf 20	7 and 8	M F and T.	2
J	74	Pell, Robert W	pt S hf 20, S hf 20	7 and 8	M F and T.	2
J	76	Bell, Mathew F	pt S hf 20, S hf 20	7 and 8	M F and T.	2
J	46	Brown, Wm	E hf N hf 13 and o p	7 and 8	M F and O.	2
	47	Brown, Geo W	E hf N hf 13 and o p	7 and 8	M F & E S.	2
J	83	Brown, Henry S	W hf N hf 13 and o p	7	M F and O.	1
J	54	Branton, Thos	E hf N hf 14, pt S hf 20	6 and 7	M F, O & T.	2
J	72	Brown, Wm	pt E hf S hf 20	9	M F and T.	2
J	40	Branton, Wm	N hf 24	10	M F and T.	9
J	153	Campbell, Maleolm	pt 17, N hf 16	9 and 10	M F and O.	2

Polling Sub-Division No. 5.

Jur.	No. on Roll.	NAME.	LOT.	Con. or Street.	Other Description.	P.O.
J	152	Campbell, Chas	S hf 16	10	M F and O	2
J	154	Campbell, Mal M	W hf 23	10	M F and O	2
	155	Campbell, Arch J	W hf 23	10	M F & F S	2
	156	Campbell, Peter T	W hf 23	10	M F & F S	2
	157	Campbell, Donald	19	10	M F and O	2
	158	Campbell, John K	19	10	M F & F S	2
	159	Campbell, Alex K	19	10	M F & F S	2
	161	Campbell, Alex C	E hf 18	10	M F and O	2
	162	Campbell, John C	E hf 18	10	M F & F S	2
	183	Collins, Thos	pt W hf N hf 13 and o p	8 and 9	M F and O	2
J	181	Collins, Wm A	pt S hf 13 and 14	9	M F and T	2
J	182	Crawford, Arch	S hf 19	9	M F and O	2
J	185	Campbell, Arch	21 and o p	8 and 9	M F and O	2
J	184	Crawford, Duncan	S hf 17	8	M F and O	2
	163	Campbell, Oliver W	E hf 18	10	M F & F S	2
J	201	Campbell, Arch M	N hf 24	6	M F and O	11
J	197	Campbell, Alex	W hf N hf 21	6	M F and O	2
J	200	Campbell, Malcolm	S hf 23	7	M F and T	2
J	186	Collins, Jas G	E hf S hf 14	8	M F and O	2
J	301	Degraw, John G	pt S hf 16	9	M F and O	2
J	302	Degraw, John	W pt N hf 16	8	M F and O	2
J	307	Dolphin, Neil	N hf 20	6	M F and T	2
J	308	Dolphin, Peter	N hf 20	6	M F and T	2
J	306	Dolphin, Alex	N hf 20	6	M F and T	2
J	305	Dolphin, James	N hf 23	8	M F and T	2
J	303	Degraw, Cornelius	pt S hf 15 and 16	9	M F and O	2

Polling Sub-Division No. 5.

Jur	No. on Roll.	NAME.	LOT.	Con. or Street.	Other Description.	P.O.
J	330	Elworthy, Richard	N hf 23, N hf 24	9	M F and O.	11
J	327	Erskine, Thomas	N hf N hf 16	6	M F and O.	2
J	3-9	Elliott, George A.	N hf S hf 13 and 14	9	M F and T.	2
J	345	Ford, James	E hf 18	9	M F and T.	2
J	388	Graham, Donald G.	E hf 23, S hf 24	10	M F and O.	11
J	402	Graham, Hugh	E hf S hf 15	8	M F and T.	2
J	439	Getty, Uriah	W hf N hf 15, pt 16	6	M F and O.	2
J	440	Getty, John F.	W hf N hf 15, pt 16	6	M F and T.	2
J	441	Getty, Edwin	W hf N hf 15, pt 16	6	M F and T.	2
J	399	Graham, Alex	W hf S hf 15	S	M F and T.	2
J	451	Hill, John L.	E pt N hf 16 and o p	8	M F and O.	2
J	448	Humphrey, Thomas	N hf S hf 17	7	M F and O.	2
J	449	Humphrey, Alfred.	N hf S hf 17	7	M F and T.	2
J	452	Hill, James A.	N hf 15 and other prem	7	M F and O.	2
	456	Henderson, George.	N hf 19	6	M F and O.	2
J	457	Henderson, John.	N hf 19	6	M F and O.	2
		<i>mn's Hill James. E Rt n/2 16</i>		<i>8</i>	<i>M F + S.</i>	<i>2</i>
	588	Leitch, Dugald sr	S hf 13 and other prem	7	M F and O.	2
	589	Leitch, Dugald jr	S hf 13 and other prem	7	M F and T.	2
	608	Mitchell, John C.	W hf S hf 15	7	M F and O.	2
J	609	Mitchell, James M.	W hf N hf 14	6	M F and O.	2

EE

Jur.	No. on Roll.	NAME.	LOT.	Con. or Street.	Other Description.	P.O
	610	McLean, Neil	N hf 21	9	M F and O..	2
J	613	McLellan, Angus	S hf 20 and other pre	10	M F and O..	2
J	614	McLellan, Donald	S hf 20 and other pre	10	M F and O..	2
J	632	McLean, Allan	pt S hf 15	9	M F and O..	2
J	629	McLean, Arch	N hf 14	8	M F and O..	2
J	630	McLean, Duncan	N hf 14	8	M F and O..	2
J	631	McLean, Chas	N hf 14	8	M F and O..	2
J	634	McLean, Chas	E pt S hf 18	9	M F and G..	2
	635	McLellan, Arch	pt W hf N hf 18	8	M F and O..	2
J	637	McKellar, Duncan	S hf 23, S hf 21	9	M F and O..	11
J	641	McDongall, Alex C	24	8	M F and O..	11
J	642	McGugan, Godfrey	N hf 23 and 21	7	M F and O..	11
J	645	McGugan, Angus	22, N hf 18, S hf 22	7 and 8	M F and O..	2
J	646	McGugan, Malcolm	22, N hf 18, S hf 22	7 and 8	M F and O..	2
J	647	McGugan, John	22, N hf 18, S hf 22	7 and 8	M F and O..	2
J	648	McGugan, Duncan	22, N hf 18, S hf 22	7 and 8	M F and O..	2
J	643	McNeil, John	S hf 19, N hf 20	8 and 9	M F and O..	2
J	654	McNeil, Angus C	N hf 19 and other pre	7	M F and O..	2
J	658	McNeil, John C	N hf 19 and other pre	7	M F and O..	2
J	655	McNeil, Duncan C	N hf 19 and other pre	7	M F and O..	2
J	656	McNeil, Malcolm C	N hf 19 and other pre	7	M F and O..	2
J	657	McNeil, Arch C	N hf 19 and other pre	7	M F and O..	2
	659	McMillan, James	W hf N hf 16	7	M F and O..	2
	660	McMillan, David	W hf N hf 16	7	M F & F S..	2
J	638	McLean, Duncan Lsr	N hf 24	7	M F and O..	11
	639	McLean, Duncan L jr	N hf 24	7	M F & F S..	11
	640	McLean, Arch	N hf 24	7	M F & F S..	11
J	650	McNeil, Duncan M	S hf 18	8	M F and O..	2

Polling Sub-Division No. 5.

Jur	No. on Roll.	NAME.	LOT.	Con. or Street.	Other Description.	P.O.
J	651	McNeil, Arch	S hf N hf 17	8	M F and O.	2
J	661	McPhail, Dugald	S hf 18	7	M F and O.	2
J	664	McKellar, James	N hf 23, N hf 22	6	M F and O.	2
J	665	McKellar, Duncan	N hf 23	6	M F & F S.	2
	663	McNeil, Alex	S hf 19	7	M F and O.	2
	662	McIntyre, Arch	pt N cor N hf 18.	6	M F and O.	2
J	310	McVicar, John	N hf 20	6	M F and O.	2
J	728	Northcott, Robt T	S hf N hf 17	6	M F and O.	1
	818	Rose, Peter	S hf 16	7	M F and O.	2
J	824	Rose, Alex	N hf 20	7	M F and O.	2
J	862	Reinhardt, Peter	E cor N hf 13.	6	M F and O.	2
	863	Reinhardt, Hannibal	E cor N hf 13.	6	M F & F S.	2
mm's J	872	Stanley, Donald S	E hf N hf 22	8	M F and O.	2
J	873	Stanley, Thomas	E hf N hf 22	8	M F and O.	2
mm's	874	Sinclair, Duncan	S hf 23	8	M F and O.	11
J	875	Sinclair, Neil	S hf 23	8	M F and T.	11
J	876	Sinclair, Arch	S hf 23	8	M F and T.	11
J	884	Sinclair, Arch	S hf 24	7	M F and O.	11
J	878	Snelgrove, David	S hf S hf 17	7	M F and T.	2
J	895	Sabine, Richard	E hf S hf 14	7	M F and F.	2
J	960	Thompson, David	cen pt 17	10	M F and O.	2
J	957	Thompson, Robt	E pt 17, pt 15 and 18	9	M F and O.	2

mm's Thompson Silas. E Pt 17.

9

M F & F S. 2

EE.

EE

Polling Sub-Division No. 5.

Jur.	No. on Roll.	NAME.	LOT.	Con. or Street.	Other Description.	P.O.
J	958	Thompson, John W.	E pt 17, pt 15 and 18	9	M F and T	2
J	959	Thompson, Robt G.	E pt 17, pt 15 and 18	9	M F and T	2
J	963	Thompson, Wm A.	N hf 20, W hf N hf 21	10	M F and O	2
J	964	Turner, Donald	W hf N hf 15	8	M F and O	2
J	965	Turner, Hugh sr	S hf 17 and o p	9	M F and O	2
J	967	Turner, Hugh jr	S hf 17 and o p	9	M F and T	2
J	966	Turner, Peter	S hf 17 and o p	9	M F and T	2
	1025	Walsh, John	pt N hf 14	9	M F and O	2
	1026	Walsh, John P.	pt N hf 14	9	M F & F S	2
	1027	Walsh, Walter	pt N hf 14	9	M F & F S	2
	1024	Wark, Thomas	S hf 24	9	M F and O	11
J	1037	Waters, Asa	N hf N hf 17	6	M F and O	2

PART II.—Persons Entitled to Vote at Municipal Elections ONLY.

	187	Collins, Ellen	N hf S hf 13, 14	9	O	2
	328	Collins, Ellen	N hf 14, pt S hf 14	7 and 8	O	2
	39	Ellworthy, John P.	N hf 24	10	O	9
	398	Graham, Annie	W hf S hf 15	8	O	2
	403	Graham, Mary	E hf S hf 15	8	T	2
	404	Graham, Christina	pt N hf 18	6	O	2

Polling Sub-Division No. 5.

	Jur.	No. on Roll.	NAME.	LOT.	Con. or Street.	Other Description.	P.O.
P.O. 2		523	James, Davi	N pt 13	9	O	2
2							
2							
2		400	Leitch, Margaret	E hf S hf 15	8	O	2
2		401	Leitch, Christina	E hf S hf 15	8	O	2
2							
2		304	McLean, Elizabeth	N hf 23	8	O	2
2		615	McGuire, Catherine	N cor 14	9	O	2
2		633	McNeil, Sarah	pt N hf 18	8	O	2
2		649	McNeil, Nancy	S hf 18	8	O	2
2		344	McLean, Margaret	E hf 18	9	O	2
11		612	McArthur, Dugald	N hf 22	10	O	9
2		611	McArthur, John	N hf 22	10	O	9
		311	McNeil, James	E hf N hf 21	6	O	11
		636	McLellan, Nevin	N hf 19	8	O	10
LY.		309	McVicar, Archd	N hf 20	6	O	2
2		766	Pincombe, John	N hf 22	9	O	11
2		71	Pritchard, Martha E.	pt E hf S hf 20	9	O	2
9		961	Thompson, George	E pt 17	10	O	2
2		962	Thompson, John R.	pt N hf 15	10	O	2
2		1112	Zavitz, Edward	pt 15	11	O	2

PART III.—Persons Entitled to Vote at Elections to the Legislative Assembly ONLY.

Jur.	No. on Roll.	NAME.	LOT.	Con. or Street.	Other Description.	P.O.
		167 Campbell, John	S hf 23	9	M F	11
		346 Frazer, Frederick	S hf 23	9	M F	2
		397 Gough, Nelson	S hf 22	9	M F	2
		506 Humphreys, John	W hf S E qr 14	8	M F	2
		752 Hore, Charles	pt W hf N hf 18	6	M F	1
		1030 Woodworth, Albert	W hf N hf 13	7	M F	2

Polling Sub-Division No. 6,

Comprising all that portion of the Township lying in the 7th, 8th, 9th and 10th Concessions West of the Side Road between Lots 12 and 13.

PART 1.—Persons Entitled to Vote at BOTH Municipal Elections and Elections to the Legislative Assembly.

Jur.	No. on Roll.	NAME.	LOT.	Con. or Street.	Other Description.	P.O.
J	4	Adair, John E	W hf N hf 6	S	M F and O	2
	1	Adamson, James	cen pt 11	9	M F and O	2
	5	Adair, Geo W	W hf N hf 6	8	M F & F S	2
		<i>mm's Adamson Quincey, Rt 11</i>		<i>9</i>	<i>M F & F S</i>	<i>2 EE</i>
J	41	Barnett, Edwin	pt N hf 11	9	M F and O	2
	33	Bennett, James	W hf N hf 5	10	M F and O	2
J	34	Bennett, George	W hf N hf 5	10	M F and O	2
J	32	Bennett, Arthur	E hf N hf 5	10	M F and O	2
J	67	Barry, Michael	S hf S hf 1 and o p	7 and 8	M F and O	8
J	68	Bryant, Wm	E hf S hf 5	8	M F and O	2
	48	Bairns, John	S hf 2 and o p	7	M F and O	7
J	69	Ball, Thus jr	N hf 6	7	M F and O	2
J	49	Bairns, Michael	S hf 2 and o p	7	M F and O	2
J	44	Beamer, Henry H	N E cor 8	8	M F and O	2
	45	Beamer, Homer	N E cor 8	8	M F & F S	2
J	144	Brown, Robert	N hf N hf 8	8	M F and T	2
J	160	Collins, James W	S hf N hf 12	9	M F and O	2
	170	Collins, John E	pt N hf 11	9	M F and O	2
J	169	Collins, Bruce O	pt W hf 11	8	M F and T	2

Jur.	No. on Roll.	NAME.	LOT.	Con. or Street.	Other Description.	P.O.
	171	Collins, Osear	pt N hf 11	8	M F and O.	2
J	165	Crealy, Truman	pt N hf N hf 12	9	M F and O.	2
	166	Crealy, John E	pt N hf N hf 12	9	M F & F S.	2
	146	Case, George	cen pt N hf 4	10	M F and O.	2
J	147	Case, James	E pt N hf 4	10	M F and O.	2
	150	Chute, Edmund	W hf 6, W hf N hf 5	9	M F and O.	2
J	151	Chute, Lionel	W hf 6, W hf N hf 5	9	M F and T.	2
J	148	Cowan, Wm	N hf 7 and o p	9	M F and O.	2
	149	Cowan, Martin H.	N hf 7 and o p	9	M F & F S.	2
J	145	Cowan, Robt L	S hf 6	10	M F and O.	2
	172	Cawthrope, Wm	N hf 9, pt N hf 11	8 and 9	M F and O.	2
	189	Columbus, Isaac	N hf 12	7	M F and O.	2
J	191	Campbell, John A	E hf S hf 12	7	M F and O.	2
	177	Cowan, Alex	E hf N hf 2	8	M F and O.	8
	178	Cowan, Malcolm	E hf N hf 2	8	M F & F S.	8
J	179	Cowan, Ronald	E hf S hf 3, E hf S hf 4	8	M F and O.	2
	180	Cowan, Dougald	W hf S hf 4	8	M F and O.	2
J	173	Clement, George	N hf 7	8	M F and O.	2
J	174	Clement, Morris	N hf 7	8	M F and T.	2
J	193	Caldwell, Thos	S pt 1	7	M F and T.	8
	190	Columbus, Isaac jr	N hf 12	7	M F & F S.	2
	164	Carman, Edward	pt N hf 12	9	M F and O.	2
J	295	Dodge, John	E pt N hf 4	9	M F and O.	2
J	289	Doan, Abraham	W hf N hf 7	9	M F and O.	2
J	297	Drake, John	E pt S hf 6	9	M F and O.	2
J	294	Dodge, Thor	S hf W hf 3	10	M F and O	8

EE mms

Polling Sub-Division No. 6.

Jur.	No. on Roll.	NAME.	LOT.	Con. or Street.	Other Description.	P.O.
J	292	Deere, Edward	N hf 8	10	M F and T	2
	293	Dodge, George	S hf W hf 3	10	M F and O	8
J	299	Degraw, Theodore	pt N hf 11	9	M F and O	2
	300	Doan, Beecher	N W pt W hf N hf 7	9	M F and O	2
J	334	Early, Wm H	pt S hf 12	9	M F and T	2
J	339	Ferguson, Ed G	S hf 5	10	M F and O	2
	342	Farthing, Wm	N pt E pt 12, pt S hf 12	8	M F and O	2
J	343	Farthing, John	S pt E $\frac{1}{2}$ E $\frac{1}{2}$ 11 and o p	8	M F and O	2
J	340	Ferguson, James	E hf 10, pt 10 and 11	8 and 9	M F and O	2
J	341	Fisher, Clement	N hf 5	8	M F and O	2
J	383	Gregory, Thomas	E hf N hf 1, W hf S hf 1	9 and 10	M F and O	8
J	386	Gilzean, Geo D	W pt 10, E pt 9	9	M F and O	2
J	387	Gilzean, James	W pt 10, E pt 9	9	M F and O	2
	389	Gripton, Henry	W hf E hf 11	8	M F and O	2
J	390	Gripton, Win T	W hf E hf 11	8	M F and T	2
J	392	Grosvenor, Edward	W hf N hf 2	8	M F and T	8
J	393	Gallagher, Owen	N hf 2	7	M F and O	2
	394	Gallagher, Michael	N hf 2	7	M F & F S	2
	395	Gallagher, Engene	N hf 2	7	M F & F S	2
	396	Gallagher, Wm	N hf 2	7	M F & F S	2
J	382	Gallagher, John	W hf S hf 3	8	M F and O	2
J	443	Hunter, Cyrns	E hf N hf 6	9	M F and O	2

Polling Sub-Division No. 6.

Jur.	No. on Roll.	NAME.	LOT.	Con. or Street.	Other Description.	P.O.
J	445	Harrington, Daniel.	N hf 1	8	M F and O.	8
	447	Harrington, John sr.	W hf S hf 1	8	M F and O.	8
J	446	Harrington, John jr.	N hf 1	8	M F and T.	8
	444	Hill, Wm	pt N hf 11	9	M F and O.	2
J	522	Jones, Wm	W pt N hf 8	9	M F and T.	2
J	524	Jennings, John	S E pt S hf 11	9	M F and T.	2
	526	Kitchen, John D.	pt S hf 9, pt 6	9 and 8	M F and O.	2
J	529	Kitchen, Hiram	S hf N hf 8	8	M F and T.	2
J	527	Kitchen, Harman	pt S hf 9	9	M F and T.	2
	549	Lamont, Donald jr.	N hf 11, pt 10	7	M F & F S.	2
J	546	Lamont, John	S hf 9	8	M F and O.	2
J	547	Lamont, Donald sr.	N hf 11, pt 10	7	M F and O.	2
	550	Lamont, John	N hf 11, pt 10	7	M F & F S.	2
J	544	Lihou, James	E hf N hf 5	9	M F and T.	2
J	548	Lamont, Duncan	N hf 11, pt 10	7	M F & F S.	2
	551	Lamont, Angus	N hf 11, pt 10	7	M F & F S.	2
J	553	Lamont, Arch	S hf 11, pt S hf 10	7	M F and O.	2
J	545	Lethbridge, Samuel.	N hf 4	7	M F and O.	2
J	593	Morrow, Thomas	W hf N hf 8, pt 7	7	M F & F S.	2
J	594	Morrow, Wm	W hf N hf 8, pt 7	7	M F & F S.	2
J	620	McDougall, Hugh	W hf S hf 5	8	M F and O.	2

Polling Sub-Division No. 6.

Jur	No. on Roll.	NAME.	LOT.	Con. or Street.	Other Description.	P.O.
J	621	McDougall, Duncan.	W hf S hf 5	8	M F and O.	2
J	622	McDougall, Allan	S hf 6	8	M F and O.	2
	624	McNeil, John sr	S hf S hf 8	8	M F and O.	2
J	626	McNeil, Arch	pt W hf N hf 7	7	M F and T.	2
	625	McNeil, Alex	S hf S hf 8	8	M F & F S.	2
	618	McLean, Allan	W pt N hf 3	8	M F and T.	2
J	623	McDougall, Allan	W hf S hf 5	8	M F and O.	2
J	627	McCandless, Andrew.	E pt S hf 12, pt 13	9	M F and O.	2
J	628	McCandless, Jos J	E pt S hf 12, pt 13	9	M F and T.	2
J	616	McQuinney, John	W pt N hf 10	8	M F and O.	2
	725	Nichols, Edward	pt N hf 12	9	M F and T.	2
J	726	Northcott, Jas E	S hf 8	9	M F and O.	2
	727	Northcott, A T	S hf 8	9	M F & F S.	2
J	751	Ogg, John	E hf N hf 8	7	M F and O.	2
J	749	Oaks, Samuel jr	S hf 7	8	M F and O.	2
J	768	Pearson, Edward	W hf S hf 1	9	M F and O.	8
J	758	Pike, Wm	N hf N hf 6	10	M F and O.	2
J	759	Patterson, Thos	S hf N hf 6	10	M F and O.	2
J	762	Patterson, George	W hf 2	10	M F and O.	8
J	763	Patterson, Andrew	E hf 2	10	M F and O.	8
	765	Powers, John	W pt N hf 9	9	M F and O.	2
J	773	Perkins, Peter	W hf W hf 11	8	M F and T.	2
	774	Pilfrey, Wm A	S W pt S hf 10	9	M F and O.	2
	775	Pilfrey, John	S W pt S hf 10	9	M F and O.	2

Polling Sub-Division No. 6.

Jur.	No. on Roll.	NAME.	LOT.	Con. or Street.	Other Description.	P.O.
	778	Payne, Harold	E hf S hf 1	9	M F & F S.	8
	784	Powers, Alfred	S hf 9	7	M F and O.	2
	785	Powers, John A	S hf 9	7	M F & F S.	2
	786	Powers, Eli T	S hf 9	7	M F & F S.	2
J	776	Paine, John J	W hf S hf 4	9	M F and O.	8
J	767	Payne, Thos H	S hf 3	9	M F & O T.	8
J	782	Patterson, Neil	W hf S hf 3	7	M F and O.	7
J	771	Parsons, Edwin F	S hf 9	10	M F and T.	2
J	761	Payne, Chas G	N hf 2	9	M F and T.	8
J	816	Quick, William	W hf S hf 7	9	M F and O.	2
	817	Quick, Robert	W hf S hf 7	9	M F & F S.	2
	542	Richardson, Wm	pt N hf 3	9	M F and O.	8
	1269	Richardson, Robt T.	pt N hf 3	9	M F and O.	8
J	820	Robinson, Joseph	S hf 7	10	M F and T.	2
J	821	Robinson, Thos	S hf 7	10	M F and T.	2
J	822	Root, Nathaniel	E pt N hf 8	10	M F and T.	2
J	859	Reid, William	S hf S hf 3	10	M F and T.	8
	860	Reid, John	S hf S hf 3	10	M F & F S.	8
J	296	Rowe, Robert	N hf 3	10	M F and T.	8
J	867	Stewart, Jos W	pt N hf 11	9	M F and O.	2
J	871	Saxton, Wm B	cen pt 12 and o p.	8	M F and O.	2
	870	Saxton, John E	S W pt 12	8	M F and O.	2
J	868	Simpson, Charles	pt N hf 10, pt S hf 10	8 and 9	M F and O.	2

Jur. No. R.
143

mm's J 924

J 865

J 879

J 975

101

J101

J101

J102

J102

J102

I

km

Polling Sub-Division No. 6.

Jur.	No. on Roll.	NAME.	LOT.	Con. or Street.	Other Description.	P.O.
	143	Schram, Fred	N hf S hf 8	8	M F and O	2
<i>mm's</i>	J 924	Schram, Burley	N hf S hf 8	8	M F and O	2
J	865	Saxton, Swain	N hf 9	7	M F and O	2
J	879	Snelgrove, Samuel	W hf S hf 12	7	M F and O	2
J	975	Thomas, Chas H	cen pt N hf 8	8	M F and T	2
	1014	Vincent, Jacob	N hf S hf 8	7	M F and O	2
J	1013	Vincent, George	S hf S hf 8	7	M F and O	2
J	1012	Vincent, Geo sr	S hf 4	10	M F and O	2
J	1028	Whiting, John jr	E pt N hf 5	7	M F and O	2
J	1029	Whiting, John sr	E pt N hf 5	7	M F and O	2
J	1035	Wakem, Albert	W hf S hf 5	7	M F and O	7

EE

PART II.—Persons Entitled to Vote at Municipal Elections ONLY.

35	Barton, Julia	E cor N hf 8	9	O	2
36	Bolton, Mary	S hf 8	10	O	2
188	Columbus, Martha	E pt S hf 10	8	O	2
176	Cowan, Mary	N hf 4	8	O	2
168	Collins, Mary E	pt W hf 11	8	O	2
<i>mm's</i>	<i>Colement George</i>	<i>n/2 7</i>	<i>8</i>	<i>O</i>	<i>2</i>
293	Degraw, Fanny	pt N hf 11	9	O	2

EE

Jur.	No. on Roll.	NAME.	LOT.	Con. or Street.	Other Description.	P.O
	764	Dyre, George	E pt N hf 3	9	0	16
	331	Elliott, Frances	pt S hf 12	9	0	2
	617	Fisher, Wellington	W pt N hf 3	8	0	8
	290	Gunn, Hector	N hf 8	10	0	2
	974	Getty, Margaret E.	een pt N hf 8	8	0	2
	442	Healey, James	N hf 1	10	0	2
	520	Jeffrey, David	S E cor N hf 9	10	0	2
	192	Kettlewell, George	S pt 1	7	0	8
	760	Kernohan, John	N hf 2	9	0	15
	770	Lea, John	S hf 9	10	0	15
	291	Murray, Wm H	N hf 8	10	0	2
	619	McGurn, Edward	E pt S hf 2	9	0	2
	777	Payne, Margaret	E hf S hf 1	9	0	8
	769	Pearson, Joseph	W hf N hf 1	9	0	8
	757	Parker, Chas W	N E cor 9	10	0	2
	543	Reynolds, Isabella	E hf N hf 5	9	0	2
	819	Robinson, Amelia	S hf 7	10	0	2

Polling Sub-Division No. 7.

57

Jur.	No. on Roll.	NAME.	LOT.	Con. or Street.	Other Description.	P. O.
	391	Rowe, Annie	W hf N hf 2	8	O	8
	823	Rowe, William	W pt S hf 2	9	O	8
	866	Saxton, Francis B	pt N hf 9 and o p	10	O	2
	869	Saxton, John R	E hf N hf 3	7	O	2
	858	Tull, Joseph	S hf S hf 3	10	O	8
	956	Thompson, Andrew	pt 10 and 11	9	O	2
	1113	Zavitz, George	pt N hf 11	9	O	16

PART III—Persons Entitled to Vote at Elections to the Legislative Assembly ONLY.

	2	Ames, Asael	pt N hf 4	9	M F	2
	552	Long, Griffith	S hf 6	7	M F	2
	750	Oak, Thor	N hf 3	8	M F	8
	968	Tuck, John	S hf 1	8	M F	8

Polling Sub-Division No. 7.

Comprising all that portion of the Township lying in the North half of the 3rd, the 4th and 5th and the South half of the 6th Concessions East of the Side Road between lots 12 and 13.

PART 1.—Persons Entitled to Vote at BOTH Municipal Elections and Elections to the Legislative Assembly.

Jur.	No. on Roll.	NAME.	LOT.	Con. or Street.	Other Description.	P.O.
J	8	Adams, Ebenezer	S hf N hf 20	5	M F and O	1
J	15	Adair, Joseph H	E hf N hf 15	4	M F and O	1
J	14	Adair, Wm N	W hf N hf 15	4	M F and O	1
J	19	Arnold, Robert	S hf N hf 20	4	M F and O	1
J	18	Arnold, Reuben	E hf S hf 20 and o p	4	M F and O	1
J	17	Arnold, Albert	N hf 23	3	M F and O	1
	7	Arnold, Joshua	pt N hf 16	4	M F and T	1
	16	Adair, John W	E hf N hf 15	4	M F & F S	1
J	20	Arnold, John	S hf N hf 20	4	M F and O	1
		<i>EE hms Arnold William. E 1/2 S 1/2 20.</i>		<i>4</i>	<i>M F & F S</i>	<i>1</i>
J	78	Baxter, Francis	W pt N hf 16	5	M F and O	1
J	84	Baxter, Thomas	S pt N hf 16	5	M F and T	1
J	77	Bond, William	N hf 17	5	M F and O	1
J	79	Bond, James	E pt S hf 16	4	M F and O	1
J	57	Bond, Robert	W hf S hf 14, N hf 14	.5 and 4	M F, O & T	1
	58	Bond, Arthur L	W hf S hf 14, N hf 14	.5 and 4	M F & F S	1
J	81	Brown, George	S hf 19	6	M F and T	1
	82	Brown, John	S hf 19	6	M F & F S	1
J	80	Bond, Stephen J	pt N hf 14 and o p	3	M F and O	1
J	59	Bond, George	S pt S hf 15 and o p	5	M F and O	1

Polling Sub-Division No. 7.

Jur	No. on Roll.	NAME.	LOT.	Con. or Street.	Other Description.	P.O
J	66	Bidnall, Wm....	pt N hf 17 and 18	3	M F and T..	1
J	55	Brown, Henry.....	W hf S hf 18 and o p	6	M F and O..	1
	60	Brearly, Henry	E pt N hf 21.....	3	M F and O..	1
J	208	Campbell, John	pt W hf 22, pt E hf 22	5	M F and O..	10
J	203	Campbell, Arch L	E hf N hf 23, S hf 24	5 and 6	M F and T..	11
J	204	Campbell, Norman L	E hf N hf 23, S hf 24	5 and 6	M F and T..	11
J	210	Campbell, Peter L.	N hf 13	4	M F and O..	2
J	211	Campbell, Mal S....	W hf N hf 13	5	M F and O	2
J	194	Courtis, Wm.....	W hf N hf 15 and o p	5	M F and O.	1
J	195	Courtis, Thomas	E hf N hf 13.....	5	M F and O..	1
J	198	Courtis, Robt B	pt S hf 14	6	M F and O..	2
J	205	Campbell, Mal J	pt S hf 23	6	M F and O..	10
	206	Campbell, Mal....	S hf 22	6	M F and O..	10
	207	Campbell, Arch R	S hf 22	6	M F & F S..	10
J	175	Cunniford, M W	pt W hf 18.....	4	M F and O..	2
J	312	Davidson, John J	S hf 20, pt 19.....	4 and 5	M F and O..	1
J	313	Davidson, Thos	W hf S hf 19 and o p	4 and 5	M F and O..	1
	358	Forsythe, Wm.....	pts 17 and 18	3	M F and O..	1
J	350	Fletcher, Arch	S hf 21 and other prem	6	M F and O..	10
	357	Forbes, Dunean	N E cor N hf 22	3	M F and O..	1
J	356	Frank, Wm P	N hf 22	4	M F and O..	10
	405	Green, Edward	N hf 21	5	M F and O	2

Polling Sub-Division No. 7.

Jur.	No. on Roll.	NAME.	LOT.	Con. or Street.	Other Description.	P.O.
J	406	Green, Thomas	E hf S hf 20	6	M F and O..	2
J	416	Getty, Albert	E hf N hf 15	3	M F and O..	1
J	417	Getty, Jonah	E hf N hf 15	3	M F and T..	1
J	411	Glover, David	W hf S hf 21	4	M F and O..	1
	412	Glover, Jackson	W hf S hf 21	4	M F & F S..	1
J	408	Glover, James	W hf S hf 22	4	M F and O..	1
J	413	Getty, Byron B	W hf N hf 15 and o p	3	M F and O..	1
J	471	Hyatt, Horace	N hf 13 and o p	3	M F & O T..	1
	472	Hyatt, Sherman	N hf 13 and o p	3	M F & F S..	1
	473	Hyatt, Healon W	N hf 13 and o p	3	M F & F S..	1
	450	Humphrey, George	pt N hf 17	3	M F and O..	1
	458	Howe, Wm	S cor 14 and o p	6 and 5	M F and O..	1
J	514	Iles, Wm	E pt 18	4	M F and T..	1
J	561	Lamont, Duncan	N hf 24	4	M F and O..	10
J	592	Mahon, John	W pt N hf 16	4	M F and O..	1
J	687	McBain, Dugald	S hf 23	5	M F and O..	10
J	688	McBain, Peter	S hf 23	5	M F and O..	10
	652	McCallum, Neil	N hf 24	5	M F and O..	10
J	653	McCallum, Duncan	N hf 24	5	M F & F S..	10
J	690	McEvoy, Thos A	pt 17	3 and 4	M F and T..	1

Polling Sub-Division No. 7.

61

Jur	No. on Roll.	NAME.	LOT.	Con. or Street.	Other Description.	P.O.
J	729	Northcott, Wm	pt N hf 16	4	M F and O	1
	733	Norton, Wm	N W pt N hf 22	3	M F and O	1
	6	Northcott, Thos A	pt N hf 16	4	M F and O	1
J	731	Northcott, Augustus	S hf 17 and o p	6	M F and O	1
J	753	Oliver, John T	N hf N hf 18	3	M F and T	1
J	813	Parrott, Geo B	W hf S hf 13 and o p	4	M F and O	1
J	814	Parrott, Edward	W hf S hf 13 and o p	4	M F and T	1
J	815	Parrott, Alex	W hf S hf 13 and o p	4	M F and T	1
J	831	Runnalls, Joseph	N hf 19	3	M F and O	1
J	893	Sabine, Caleb	E hf N hf 15	5	M F and O	1
	1055	Sisson, Joseph	pt S hf 16	4	M F and O	1
	908	Smith, Wm	W hf S hf 20	4	M F and O	1
J	909	Smith, Wm H	W hf S hf 20	4	M F and O	1
	905	Sullivan, Thos	W hf N hf 20	3	M F and O	1
	906	Sullivan, John	W hf N hf 20	3	M F & FS	1
J	885	Snelgrove, Wm	N hf 19	5	M F and O	1
J	886	Snelgrove, Wm Y	E hf N hf 18, pt 18	5 and 6	M F and O	1
	887	Snelgrove, Orva	E hf N hf 18, pt 18	5 and 6	M F & FS	1
	911	Snelgrove, Isaae A	pt S hf 17	4	M F and T	1
J	888	Sisson, Cephas	W hf N hf 18	5	M F and O	1
J	889	Sabine, John	E hf S hf 15	6	M F and O	1
J	890	Sabine, Lomis	E hf S hf 15	6	M F and O	1

nm's Sabine James. 11/2 S/2 15

6

M L + L S. 1 69

Polling Sub-Division No. 7.

Jur.	No. on Roll.	NAME.	LOT.	Con. or Street.	Other Description.	P.O.
J	882	Steinhoff, Daniel	W hf S hf 15	5	M F and T	1
J	1271	Sleath, William	E hf S hf 18	5	M F and T	1
J	972	Tomlinson, Wm	S hf 24	5	M F and O	10
	973	Tomlinson, Jas E	S hf 24	5	M F & F S	10
J	1015	Veale, Wm	cen pt 16	5	M F and O	1
J	1016	Veale, Arch	W pt S hf 16	5	M F and O	1
J	1021	Vennor, Solomon	N hf 16	3	M F and O	1
J	1018	Vanatter, John N	N hf N hf 20	4	M F and O	1
J	1020	Vanatter, Daniel	pt 19	4	M F and O	1
J	1017	Veale, John R	pt W hf S hf 16	5	M F and O	1
	1019	Vanatter, Iro E	pt E hf N hf 21	3	M F and T	1
	1023	Vennor, Wm	pt N hf 17 and 18	3	M F and T	1
J	1039	Wilton, Thomas	E hf S hf 17	5	M F and O	1
J	1044	Wickett, Richard	W hf S hf 13	5	M F and O	2
	1045	Wickett, George	W hf S hf 13	5	M F & F S	2
J	1050	Waters, Lindley	E hf S hf 13, pt 19	5	M F and O	2
J	1041	Wilton, Wesley	S hf 16, E pt 13	6	M F and O	2
J	1051	Wyatt, Wm	W hf S hf 14, pt 13	4	M F and O	1
J	1052	Winter, Wm	S hf 15	4	M F and O	1
	1053	Winter, John F	S hf 15	4	M F & F S	1
J	1047	Willsie, Asa	E hf N hf 20	3	M F and O	1
J	1056	Winter, George	pt S hf 16	4	M F and T	1
J	1031	Wilton, Amos P	cen pt 13	6	M F and O	2

Jur.	No. on Roll.	NAME.	LOT.	Con. or Street.	Other Description.	P.O.
	10 54	Welch, Philemon...	8 cor S hf 16	4	M F & F S.	2
	1043	Wade, Ashley	cen pt S hf 13	6	M F and O.	2

PART II.—Persons Entitled to Vote at Municipal Elections ONLY.

	64	Badge, Betsy	pt N hf 17	3	O	1
	56	Campbell, Arch	N hf 14	4	O	
	202	Campbell, Donald M.	S hf 24	6	O	
	883	Edwards, Rich M.	W hf S hf 15	5	O	26
	470	Getty, Mary	N hf 13	3	O	2
	409	Graham, Duncan	S hf 24	4	O	10
	410	Graham, Donald F.	S hf 24	4	O	10
	562	Lamont, Hugh	pt S hf 23	4	O	10
	686	McIntaggart, Donald	N hf 24	3	O	10
	684	McKellar, Neil	pt S hf 23	4	O	11
	685	McIntyre, Hugh	N hf 21	4	O	10
	689	McEvoy, Andrew M.	pt 17	3 and 4	O	15
	683	McMurphy, John	E hf N hf 23	4	O	10

Polling Sub-Division No. 7.

Jur.	No. on Roll.	NAME.	LOT.	Con. or Street.	Other Description.	P.O.
	680	McMurphy, Dunean..	W hf N hf 23	4	O	10
	681	McMurphy, John....	W hf N hf 23	4	T	10
	682	McMurphy, Dougald.	W hf N hf 23	4	T	10
	732	Northcott, Ephraim..	S hf 17 and o p	5 and 6	O	1
	892	Sabino, Julia.....	W hf S hf 15	6	O	1
	1038	Wilton, Ellen	W hf S hf 17	5	O	1

PART III.—Persons Entitled to Vote at Elections to the Legislative Assembly ONLY.

	21	Adams, Reuben	E hf 17	4	M F	1
	22	Amies, George	N hf 14	3	M F	1
	196	Cave, Joseph	N hf 14	5	M F	1
	200	Courtis, John	W hf N hf 18	5	M F	2
	351	Fox, George	S hf 13	6	M F	2

21 22 196 200 351
 21 22 196 200 351
 21 22 196 200 351
 21 22 196 200 351
 21 22 196 200 351

