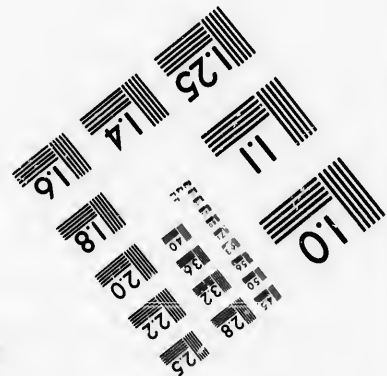
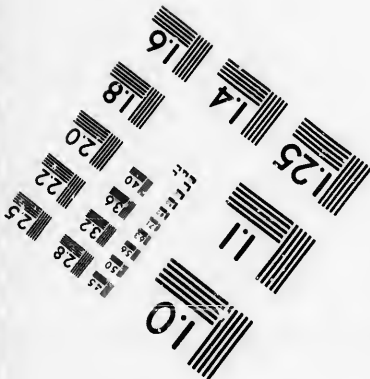
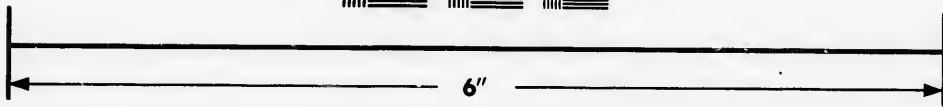
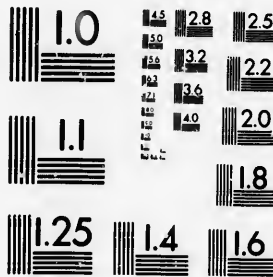


**IMAGE EVALUATION
TEST TARGET (MT-3)**



**Photographic
Sciences
Corporation**

23 WEST MAIN STREET
WEBSTER, N.Y. 14580
(716) 872-4503



**CIHM/ICMH
Microfiche
Series.**

**CIHM/ICMH
Collection de
microfiches.**



Canadian Institute for Historical Microreproductions / Institut canadien de microreproductions historiques



© 1986

Technical and Bibliographic Notes/Notes techniques et bibliographiques

The Institute has attempted to obtain the best original copy available for filming. Features of this copy which may be bibliographically unique, which may alter any of the images in the reproduction, or which may significantly change the usual method of filming, are checked below.

L'Institut a microfilmé le meilleur exemplaire qu'il lui e été possible de se procurer. Les détails de cet exemplaire qui sont peut-être uniques du point de vue bibliographique, qui peuvent modifier une image reproduite, ou qui peuvent exiger une modification dans la méthode normale de filmage sont indiqués ci-dessous.

- Coloured covers/
Couverture de couleur
- Covers damaged/
Couverture endommagée
- Covers restored and/or laminated/
Couverture restaurée et/ou pelliculée
- Cover title missing/
Le titre de couverture manque
- Coloured maps/
Cartes géographiques en couleur
- Coloured ink (i.e. other than blue or black)/
Encre de couleur (i.e. autre que bleue ou noire)
- Coloured plates and/or illustrations/
Planches et/ou illustrations en couleur
- Bound with other material/
Relié avec d'autres documents
- Tight binding may cause shadows or distortion
along interior margin/
La reliure serrée peut causer de l'ombre ou de la
distorsion le long de la marge intérieure
- Blank leaves added during restoration may
appear within the text. Whenever possible, these
have been omitted from filming/
Il se peut que certaines pages blanches ajoutées
lors d'une restauration apparaissent dans le texte,
mais, lorsque cela était possible, ces pages n'ont
pas été filmées.
- Additional comments: / [Printed ephemera] [4] p.
Commentaires supplémentaires:

- Coloured pages/
Pages de couleur
- Pages damaged/
Pages endommagées
- Pages restored and/or laminated/
Pages restaurées et/ou pelliculées
- Pages discoloured, stained or foxed/
Pages décolorées, tachetées ou piquées
- Pages detached/
Pages détachées
- Showthrough/
Transparence
- Quality of print varies/
Qualité inégale de l'impression
- Includes supplementary material/
Comprend du matériel supplémentaire
- Only edition available/
Seule édition disponible
- Pages wholly or partially obscured by errata
slips, tissues, etc., have been refilmed to
ensure the best possible image/
Les pages totalement ou partiellement
obscurcies par un feuillet d'errata, une pelure,
etc., ont été filmées à nouveau de façon à
obtenir la meilleure image possible.

This item is filmed at the reduction ratio checked below/
Ce document est filmé au taux de réduction indiqué ci-dessous.

10X	14X	18X	22X	26X	30X
<input type="checkbox"/>	<input type="checkbox"/>	<input checked="" type="checkbox"/>	<input type="checkbox"/>	<input type="checkbox"/>	<input type="checkbox"/>
12X	16X	20X	24X	28X	32X

The copy filmed here has been reproduced thanks to the generosity of:

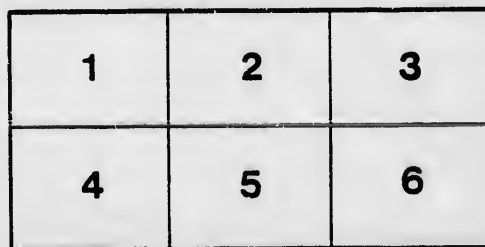
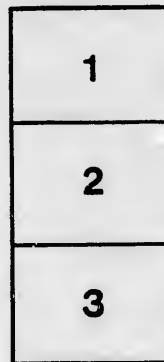
D. B. Weldon Library
University of Western Ontario
(Regional History Room)

The images appearing here are the best quality possible considering the condition and legibility of the original copy and in keeping with the filming contract specifications.

Original copies in printed paper covers are filmed beginning with the front cover and ending on the last page with a printed or illustrated impression, or the back cover when appropriate. All other original copies are filmed beginning on the first page with a printed or illustrated impression, and ending on the last page with a printed or illustrated impression.

The last recorded frame on each microfiche shall contain the symbol \rightarrow (meaning "CONTINUED"), or the symbol ∇ (meaning "END"), whichever applies.

Maps, plates, charts, etc., may be filmed at different reduction ratios. Those too large to be entirely included in one exposure are filmed beginning in the upper left hand corner, left to right and top to bottom, as many frames as required. The following diagrams illustrate the method:



L'exemplaire filmé fut reproduit grâce à la générosité de:

D. B. Weldon Library
University of Western Ontario
(Regional History Room)

Les images suivantes ont été reproduites avec le plus grand soin, compte tenu de la condition et de la netteté de l'exemplaire filmé, et en conformité avec les conditions du contrat de filmage.

Les exemplaires originaux dont la couverture en papier est imprimée sont filmés en commençant par le premier plat et en terminant soit par la dernière page qui comporte une empreinte d'impression ou d'illustration, soit par le second plat, selon le cas. Tous les autres exemplaires originaux sont filmés en commençant par la première page qui comporte une empreinte d'impression ou d'illustration et en terminant par la dernière page qui comporte une telle empreinte.

Un des symboles suivants apparaîtra sur la dernière image de chaque microfiche, selon le cas: le symbole \rightarrow signifie "A SUIVRE", le symbole ∇ signifie "FIN".

Les cartes, planches, tableaux, etc., peuvent être filmés à des taux de réduction différents. Lorsque le document est trop grand pour être reproduit en un seul cliché, il est filmé à partir de l'angle supérieur gauche, de gauche à droite, et de haut en bas, en prenant le nombre d'images nécessaire. Les diagrammes suivants illustrent la méthode.

errata
to

pelure,
n à



32X

Grand Opera House,

Nov. 12th, 1892.

Special Engagement of

OVIDE : MUSIN,

The World Renowned Violinist,

Supported by

Mrs. Annie Louise Tanner-Musin

PRIMA DONNA SOPRANO.

Miss Inez Parmater,

MEZZO SOPRANO.

Pier Delaseco,

BASSO,

AND

Eduard Scharf,

PIANIST.

Carriages at 10.15 p. m.

Southcotts,

• • TAILORS OF REPUTATION,

INVITE YOU TO CALL.



... NEW DESIGNS IN ..

Overcoatings and Dress Suitings

OUR SPECIALTIES:



Fine Workmanship

—AND—

A Perfect Fit. . . .

361 Richmond St., London.

PROGRAM

Handwritten signature or initials

1. "Paraphrase on Verdi Rigoletto" ..
EDUARD SCHEUBER
2. Aria "Infelice" ..
PIER DELAUNAY
3. "From Out Thine Eyes" ..
INEZ PARMATER
4. "Caprice No. 3, on Scotch Melodies" ..
OVIDE MURPHY
5. "Bell Song of Lakme" ..
ANNIE LOUISE TANNER
6. DUET ..
INEZ PARMATER and ANNIE LOUISE TANNER
7. PIANO SELECTIONS ..
EDUARD SCHEUBER
8. Air from "Le Cid" ..
ANNIE LOUISE TANNER
9. "The Mighty Deep" ..
PIER DELAUNAY
10. SOLI FOR VIOLIN—(a) Evening Star, ..
(b) "Mazurka" ..
OVIDE MURPHY
11. TRIO ..
ANNIE LOUISE TANNER,
PIER DELAUNAY

GOD SAVE THE KING

Knabe Piano used at all

*The very fine Ronisch Upright Grand Piano
supplied from the Warerooms of W. Hallé*

PROGRAMME



on Verdi Rigoletto"..... *Liszt*
EDUARD SCHARF

"..... *Verdi*
PIER DELASCO.

chine Eyes"..... *Ries*
INEZ PARMATER

3, on Scotch Melodies"..... *Musin*
OVIDE MUSIN.

"Lakme"..... *Delibes*
ANNIE LOUISE TANNER.

..... *Rubinstein*
PARMATER and PIER DELASCO

IONS.....
EDUARD SCHARF

Cid"..... *Massenet*
LOUISE TANNER and OVIDE MUSIN.

Deep"..... *Jude*
PIER DELASCO

LIN—(a) Evening Star," *Tannhauser* *Wagner*
 (b) "Mazurka" *Musin*
OVIDE MUSIN.

..... *Normann*
LOUISE TANNER, INEZ PARMATER.
PIER DELASCO

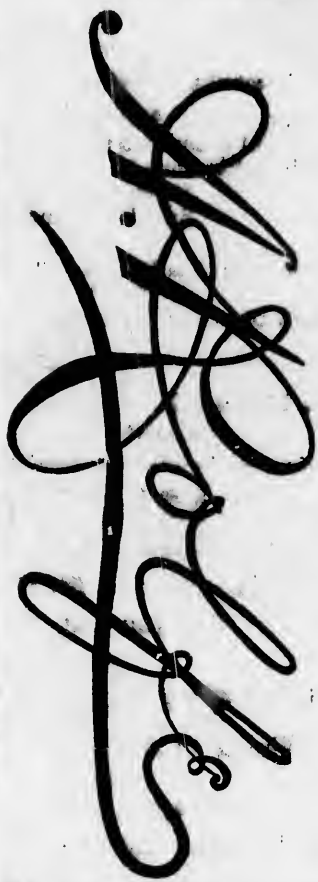
D SAVE THE QUEEN.

Piano used at all Musin Concerts.

*e Ronisch Upright Grand Piano used at this Concert is
 Warerooms of W. Halle & Co., Richmond Street, City.*

Silk Bangeline
 Silk Faile Franchise
 Silk Claseques
 Silk Paragora
 China Silks
 Surah Silks

WITH TRIMMINGS TO MATCH:



Opera Capes, Silk Shawls,
 Opera Fans, Silk Hose.

SILK and KID GLOVES
 From 18 in. to 30 in., in all the
 New Tints.

Laces, Chiffons, Beaded
 Fringes & Gold & White.

We carry the largest and best selected stock of Evening Goods in the city.

THE GERMANIA Life Insurance Company, OF NEW YORK.

ESTABLISHED 1860. ASSETS, \$17,000,000.00.

ACTUAL RESULT:

Ten Payment Life Policy. Amount \$5,000. Tontine Period 13 yrs

Age 27.	Annual Premium	-	-	\$226.00.
Total premiums paid during Tontine Period			\$2,260.00	
Cash Settlement on Completion of Tontine Period.				
	Reserve Guaranteed	-	\$1,905.00	
	Surplus actually earned	\$1,404.90		
				\$3,309.90

This represents: A cash return of all premiums paid with a profit of \$1,049 90, after an insurance of \$5,000 during thirteen years.

Free Choice of any of the usual Tontine Options may be taken instead of the above.

J. A. NELLES,
City Agent.

JEFFERS & RÖNNE,
Managers for Canada.

BICYCLES!

You don't want one *NOW*, of course.

But you will, perhaps, *IN THE SPRING.*

— REMEMBER —

THE "QUADRANT" LEADS!

Winner of the Forest City Championship, 1892.

Ridden by Clay W. D. Manville.

Highest Grade Only.

Gold Medals and Highest Awards were given to these
Machines at

Liverpool International Exhibition,	1886.
Toulouse " "	1887
Cardiff Exhibition, - - -	1888.
Melbourne International Exhibition	1888
Liege Exhibition, - - -	1890.

SPECIALTY—The Quadrant Patent Spring Saddle—Best in the world, eclipses everything hitherto introduced. See it. For further particulars apply to

Percy T. Carroll, -- London, Ont.

